



**Turneffe Atoll**  
Sustainability Association

# ANNUAL REPORT



# 2024



# Index

<b>Turneffe Atoll Marine Reserve Map</b>	<b>02</b>
<b>Letter from the Chairman, Lindsay Garbutt</b>	<b>03</b>
<b>Executive Director Remarks, Valdemar Andrade</b>	<b>04</b>
<b>Introduction</b>	<b>05</b>
<b>Enforcement Compliance Programme</b>	<b>06</b>
<b>Adaptive Management</b>	<b>12</b>
<b>Financial Sustainability Program</b>	<b>22</b>
<b>Education and Community Outreach</b>	<b>29</b>
<b>Admin &amp; Human Resources Management</b>	<b>32</b>
<b>Financial Status</b>	<b>36</b>
<b>TAMR Ambassador</b>	<b>37</b>
<b>Ways to Support</b>	<b>40</b>



## From the Chairman of the Board of Directors: Lindsay Garbutt

Dear Valued Supporters and Stakeholders,

As Chairman of the Turneffe Atoll Sustainability Association, I am writing to express my sincere gratitude for your unwavering commitment to our shared vision of a healthy and thriving Turneffe Atoll Marine Reserve (TAMR). Your support has been instrumental in our work to protect TAMR in particular the fishing and tourism industries that depend on the commercial and recreational fauna and the health of the ecosystems of Turneffe and I am proud of the progress we have made together with the invaluable support of our donors and tourism resort partners from Turneffe who have opted to provide an additional three times the value of the statutory fees in order to assist the great work that we have been doing.

However, the challenges we face are far from over. Climate change, habitat destruction, and biodiversity loss continue to pose significant threats to our natural world. We are witnessing a staggering reduction in wildlife populations. It is estimated that 70% of fish populations are either fully used, overused, or in crisis, with devastating impacts on ecosystems and the communities that depend on them. We are also witnessing a staggering reduction from overseas development assistance to conservation. The estimated percentage drop in ODA for 2025 is 13%.

In this critical time, we must redouble our efforts to protect our planet. As TASA we are focused on:

- **Raising public awareness:** Sharing our stories and educating the public about the importance of our work in Turneffe as model for the Marine Protected Areas System.
- **Advocating for policy changes:** Lobbying our policymakers to implement effective environmental regulations.
- **Directly protecting ecosystems and species:** Implementing on-the-ground conservation projects and ensuring that our main programs of Enforcement and Science are abating illegal and unregulated activities, measuring the impacts, and recommending management interventions.
- **Piloting innovative models for financing our work:** Developing a financial sustainability plan that ensures TASA's financial resilience by identifying sustainable revenue sources, optimizing financial management, and establishing a framework for financial stability.

I urge you to join us in this vital work. Your continued support, in whatever form, is essential to our success.

Yours in conservation,

**Lindsay Garbutt**  
**Chairman, TASA Board of Directors**



## Executive Director's Remarks: Valdemar Andrade

Our ability to create a strategic partnership model for marine protected area management is our most powerful tool in addressing Belize's challenges. The future of our marine resources and economy depends on collaboration, not only among local stakeholders but also on innovative financing models and long-term partnerships.

The Turneffe Atoll Marine Reserve (TAMR) demonstrates the critical link between marine conservation and national economic resilience. With its ecosystems valued at over \$500 million annually in benefits like shoreline protection, fishing, tourism, and blue carbon, TAMR supports countless livelihoods. It also played a pivotal role in securing the \$530 million Blue Bond for Belize, reducing the national debt-to-GDP ratio by 12%. This was no small feat, underscoring the untapped potential of the Blue Economy.

However, the traditional dependency on foreign grants places Belize at significant risk. The COVID-19 pandemic laid this bare, exposing vulnerabilities in our reliance on tourism and prompting local communities to turn back to fishing. This reminded us of the complexities of modern crises and the impossibility of solving them alone. To build resilience, our focus must shift to cooperation and influence, fostering partnerships that maximize available financial and technical resources.

For 2024, TASA's investment of \$3.3 million in managing the TAMR has yielded immense returns for Belize's economy and people. Yet, impact cannot be measured solely in terms of cost. It's about sustaining the livelihoods tied to marine resources and creating a foundation for economic and social stability. This requires a paradigm shift in how we manage marine conservation. Fundamentally, we don't just manage natural resources—we manage people. Stakeholder behavior, whether fishers, tourism operators, or policymakers, will ultimately decide the future of our protected areas and, by extension, our economy.

Moving forward, strategic partnerships must fuel Belize's marine conservation efforts. This means building alliances that extend beyond international donors to engage local businesses, entrepreneurs, and communities who depend on marine resources or support their protection. We must also transition to a sustainable financing model that combines donor funds with local investments, creating a resilient strategy that ensures long-term conservation and economic stability. The solutions we seek are primarily social, focused on fostering understanding, compliance, and stewardship among all stakeholders.

At TASA, we invite you to join us in this effort. By leveraging the strength of partnerships, we can create scalable, lasting solutions to the challenges we face. Our ability to partner is not only strategic but essential to overcoming the global and local challenges before us.

Yours in collaboration,  
**Valdemar Andrade**  
Executive Director



# Introduction

## Turneffe Atoll Marine Reserve

The Turneffe Atoll Marine Reserve (TAMR) was officially established on November 22, 2012. Turneffe Atoll is the largest and most biological diverse Atoll in the Western Hemisphere and Turneffe Atoll Marine Reserve is the largest marine reserve in Belize. Turneffe is located approximately 20 miles east of Belize City and encompasses an area of approximately 30 miles by 10 miles. The atoll consists of a network of reefs, back-reef flats, creeks and lagoons, mangroves and more than 150 islands. Turneffe Atoll is an important commercial fishing area for conch, lobster, and finfish. In addition, it supports healthy populations of sharks, manatees, dolphins, crocodiles, and a wide variety of other species. Turneffe has three known fish spawning aggregation sites, Belize's primary American Saltwater Crocodile nesting site and several species found at Turneffe are listed as threatened or endangered.

## Turneffe Atoll Sustainability Association (TASA)

The Turneffe Atoll Sustainability Association (TASA) was formed by Turneffe stakeholders in 2012 and incorporated under the Substantive laws of Belize for the purpose of co-managing the Marine Reserve. In October 2013, TASA was designated as the official co-manager of TAMR. In alignment with the community advisory model of governance, TASA has been established in a manner which ensures that all key stakeholder groups are represented on its Board of Directors and are directly involved in decision making at the highest levels to achieve its priority areas:

- Enforcing the rules and regulations of the TAMR and collaborating with other agencies and partners to ensure compliance and conservation.
- Conducting scientific research and monitoring of the marine ecosystems and biodiversity of the Turneffe Atoll.
- Implementing education and outreach programs to raise awareness and foster stewardship among the local communities and stakeholders.
- Developing and promoting sustainable tourism and livelihood opportunities for the Turneffe Atoll residents and visitors.

## MISSION

***"TASA aims to create a self-sustaining and resilient world-class marine reserve through innovative and adaptive interventions for the benefit of the people and country of Belize"***

## VISION

***"A resilient and thriving marine ecosystem providing sustainable livelihoods, and environmental and economic benefits for Belize"***

# Enforcement Compliance Programme

**1005**

Patrols

**1991**

Establishment inspections

**2550**

Fishing License inspections

**2519**

Fishing vessel inspections

**41,977**

Distance patrolled (km)

**7575**

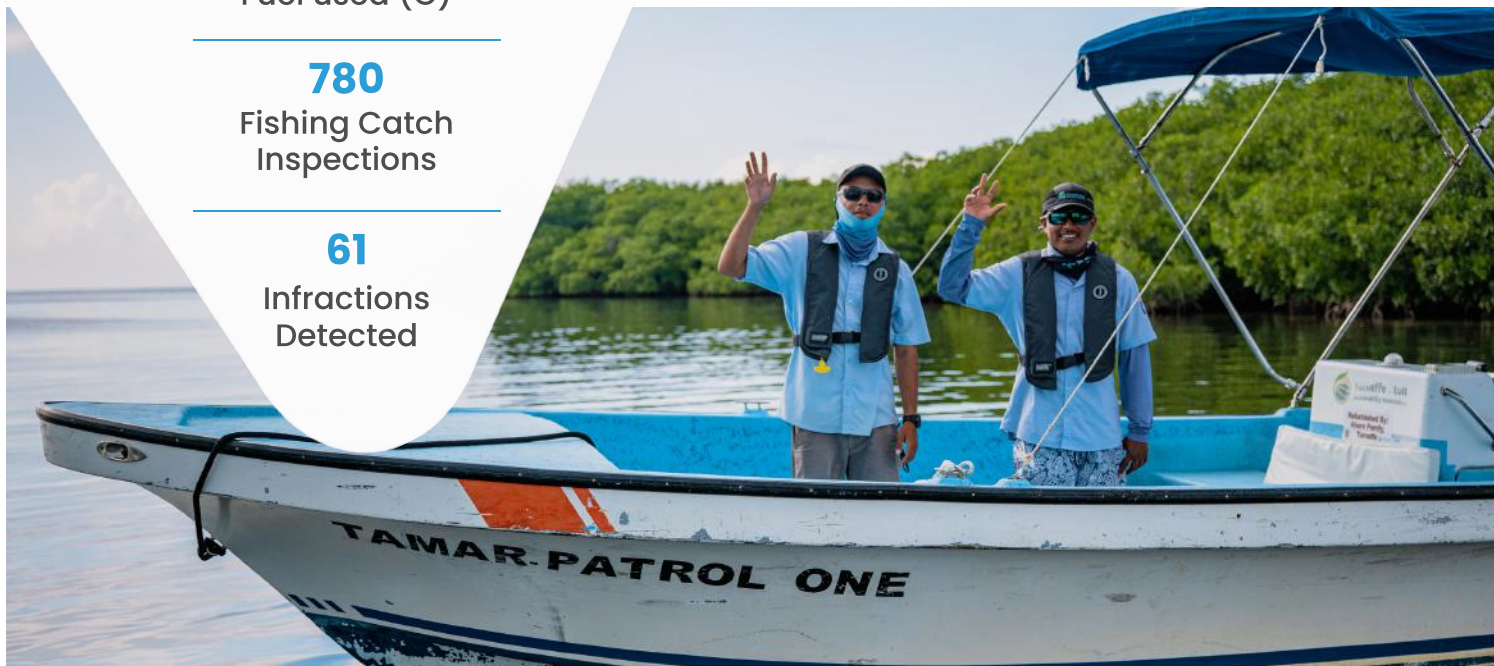
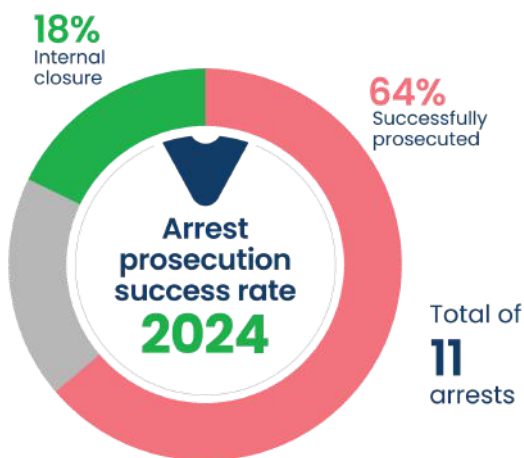
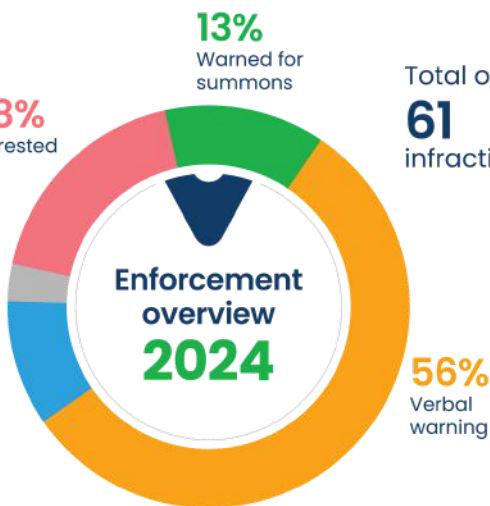
Fuel used (G)

**780**

Fishing Catch Inspections

**61**

Infractions Detected





**50%** Successfully prosecuted  
**50%** Ongoing trial

Number of seize & desist:

**2**



**63%** Ongoing Trial  
**37%** Successfully Prosecuted

Total warned for summons:

**8**



### CEASE & DESIST

- 126 Out of Season Lobster Tails
- 1 Over the Water Structure Development

The Enforcement Program delivered significant outputs, including 1,005 patrols, 3,974 active patrol hours, over 2,500 stakeholder engagements, and 41,977 kilometers patrolled, covering 70% of the marine reserve. Fuel consumption totaled 7,575 gallons, averaging 0.18 gallons per kilometer. Despite challenges related to rising safety and security concerns for Conservation Fisheries Officers, actionable steps are being taken through structured agreements with relevant authorities.

The Turneffe Atoll Marine Reserve continues to attract new fishers, increasing commercial fishing activities and illicit operations. This influx has intensified “turf wars” between fisher camps, placing additional pressure on the area. However, TASA’s Conservation Officers remained committed to enforcement, surveillance, and compliance efforts.

Collaboration with the Belize Coast Guard proved critical, with joint operations conducted from conservation outposts at Mauger Caye and Calabash. TASA is actively working to upgrade facilities at the southern base in Caye Bokel to further support Coast Guard personnel and strengthen field operations.

The Enforcement Program demonstrated significant progress compared to 2024, with notable percentage increases in key areas. Patrols rose by 54%, establishment inspections by 37%, and fishing license checks by 24%. Fishing catch inspections displayed the highest growth, with a 55% increase, while infractions observed grew by 27%. Although vessel inspections saw a marginal decline of 3%, patrol distances increased by 25%, supported by a 36% rise in fuel usage. These improvements underscore strengthened enforcement measures and a continued commitment to monitoring and compliance across Turneffe Atoll Marine Reserve.

The Enforcement Program remained with its full operational team (17) members throughout the year, broken down as follows:

- 1 x Enforcement Manager
- 1 x Enforcement Program Coordinator
- 3 x Chief Conservation Officers
- 9 x Conservation Officers
- 3 x Security Officers/Cooks

## Zoning and Boundaries:

The implementation of the Replenishment Zone Expansion, aligned with Belize's 30x30 MPA coverage goal, posed enforcement challenges due to inadequate demarcation. Conservation outposts at Mauger Caye, Calabash HQ, and Caye Bokel reported stakeholder resistance and confrontations. Despite these obstacles, TASA has remained steadfast in outreach efforts, educating stakeholders on replenishment zones through boat-to-boat sessions. Enforcement actions included issuing three warnings for summons to stakeholders failing to comply after being informed. TASA's continued commitment ensures progress toward sustainable marine resource management.

## Fisheries Compliance:

The enforcement team diligently conducted fisheries inspections to ensure compliance with Fisheries regulations for all commercial species. These efforts included verbal and written warnings, as well as levying charges for infractions, effectively deterring illegal activities. Team members supported the AMP program by recording data on commercial species such as conch, lobster, and finfish extracted from the Marine Reserve. Additionally, they collaborated with the Education and Outreach program, engaging stakeholders through strategic boat-to-boat sessions. This outreach involved discussions with over 250 fishers, 45 commercial vessels, and 30 fisher camps, reinforcing awareness of the rules and regulations within the Turneffe Atoll Marine Reserve.

## Development Compliance:

Enforcing development regulations within the Marine Reserve remained a significant challenge. In 2024, unauthorized activities included the establishment of a new fishing camp, the re-establishment of an abandoned camp, and the sale of another camp to a new entrant. These developments were promptly reported to the Belize Fisheries Department and issued cease-and-desist orders. Despite three mediation sessions involving stakeholders, the Fisheries Department, and TASA, enforcement actions to halt access or development remained limited. Growing concerns among stakeholders prompted Joint Operations with the Police Department, Fisheries, and the Belize Coast Guard to ensure compliance with Belizean laws.

## Technology Solutions

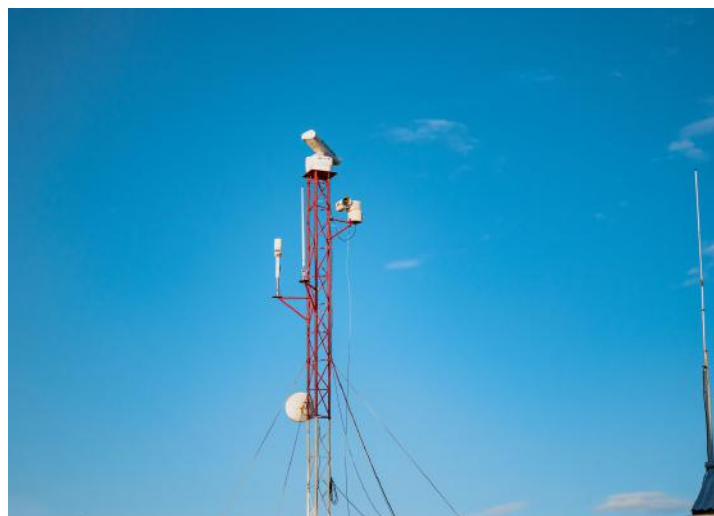
TASA relied on innovative technological tools to strengthen enforcement efforts and ensure strategic operations within the Marine Reserve. The Spatial Monitoring and Reporting Tool (SMART) served as a critical platform for recording field data and analyzing trends to deploy enforcement teams effectively.

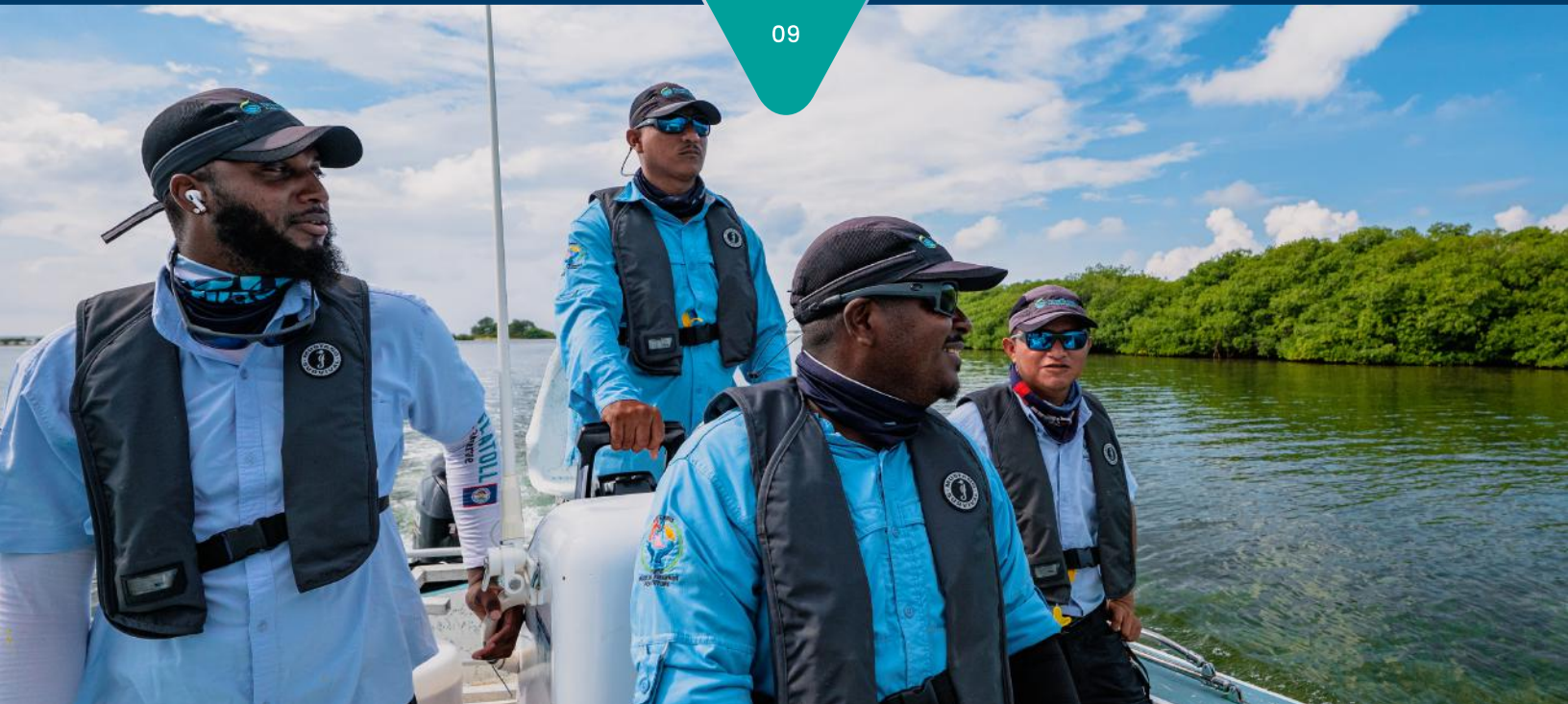
SMART-driven interventions have successfully deterred illegal activities, including uncovering 126 out-of-season lobster tails at Rendezvous Point, designating it as a high-priority area for patrols.



Caye Bokel Conservation Outpost features the advanced M2 Radar System, enabling real-time monitoring of illegal activities within a 5-nautical-mile radius. This system supports the protection of critical spawning sites but faced challenges in 2024 due to power supply issues and component malfunctions, including the need to replace the Charge Converter and enhance the solar system.

Additionally, Trak-solutions tracks vessel locations, patrol routes, and engine maintenance, ensuring operational efficiency and rapid emergency responses. Traditional methods, such as binocular surveillance, complement these innovations, showcasing TASA's adaptive approach to marine enforcement.





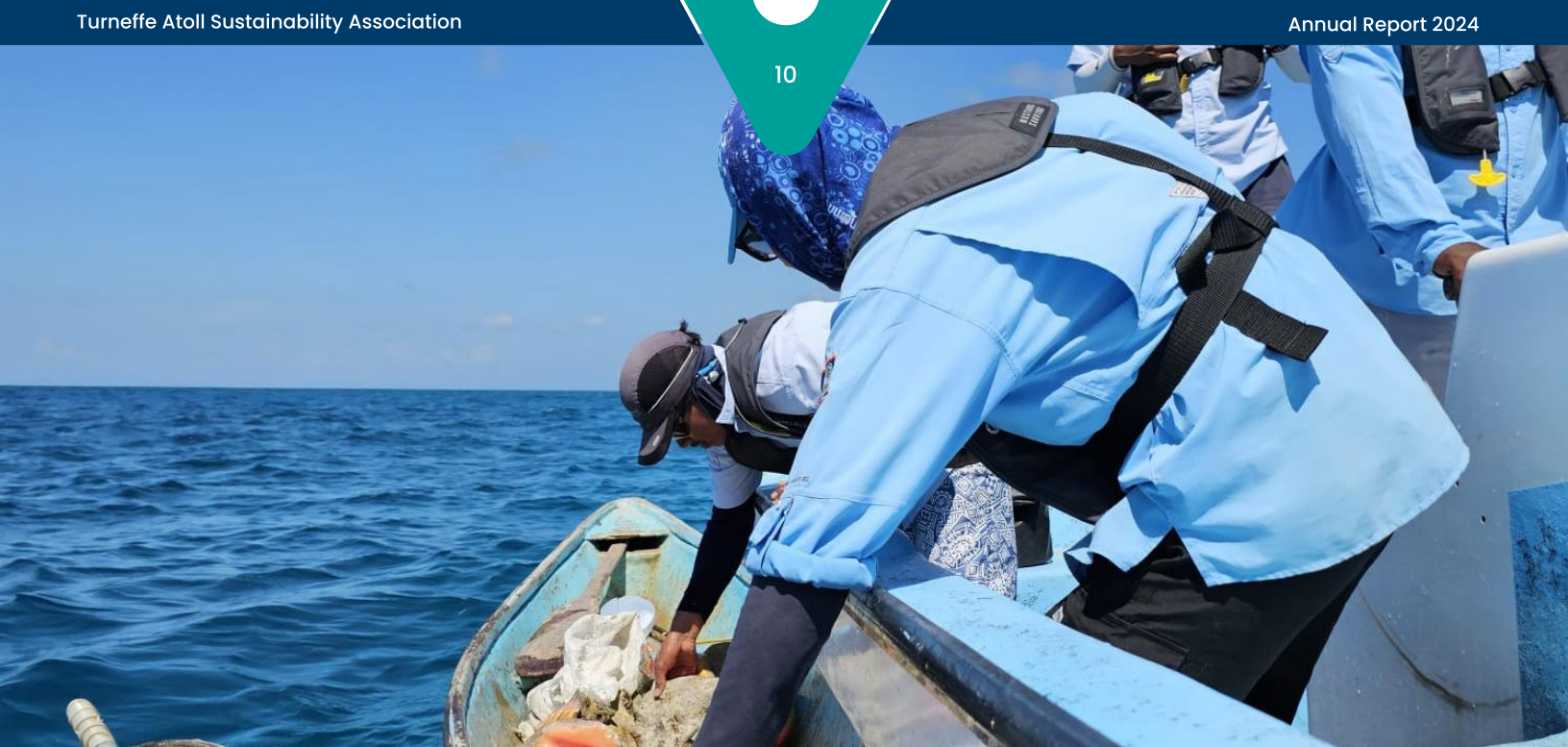
## Fisheries Department Collaboration and Enforcement Outcomes

The Belize Fisheries Department has been instrumental in supporting Turneffe Atoll Marine Reserve through patrol assistance, resource provision, and major joint operations with the Police Department, GI3, BCG, TASA, and other partners. These operations focused on inspecting the Atoll, targeting high-risk fishers and camps, addressing growing safety concerns for commercial and recreational activities.

Strengthened collaboration and knowledge-sharing have bolstered enforcement success, with arrest prosecution rates reaching 64%, 18% under trial, and 18% internally closed. Warned-for-summons actions achieved a 37% success rate, with 63% ongoing trials. Updated fines under the Fisheries Resource Act introduced challenges, requiring longer court processes, but these efforts resulted in over \$36,000 in penalties.

Notably, enforcement outcomes included the seizure of one commercial vessel and the discovery of 126 out-of-season lobster tails in a concealed stash. These achievements highlight the Fisheries Department's dedication to safeguarding marine resources and ensuring compliance.





Mandate Analysis - Caye Bokel 2024



Mandate Analysis - Mauger Caye 2024



Mandate Analysis - Calabash 2024



*By integrating scientific research, enforcement collaboration, and policy engagement, the AMP, in close collaboration with the other TASA programs, ensures Turneffe Atoll Marine Reserve remains a model for effective marine resource management.*





# Adaptive Management

The Adaptive Management Program (AMP) continued its commitment to monitoring, research, and conservation in the Turneffe Atoll Marine Reserve (TAMR) throughout 2024.

The team conducted extensive fieldwork, capacity-building initiatives, and policy engagements to support evidence-based management of marine resources. This report highlights key activities and findings from the year and how they align with TASA's broader management goals, particularly the objectives outlined in the TAMR Management Plan (2023-2027).

The TAMR Management Plan aims to position TAMR as a model for sustainable fisheries, biodiversity conservation, and ecologically sustainable tourism, while securing financial sustainability through tourism revenue and innovative conservation funding mechanisms. The AMP's work directly contributes to achieving these objectives through scientific monitoring, policy engagement, and ecosystem-based management interventions.

## 1. COMMERCIAL SPECIES MONITORING

### Fish Spawning Aggregations (SPAGs) Monitoring

Fish spawning aggregations are vital to the reproductive cycles of commercially and ecologically important species. The AMP team carried out SPAG monitoring throughout the SPAG season months (January, February, April, and May) at designated sites: Mauger Caye, Dog Flea, and Caye Bokel. These efforts support sustainable fisheries, a key focus of Objective One of the TAMR Management Plan: ensuring effective management of fisheries resources and improving sustainable production for TAMR fishers.

Survey Dates	Number of Dives	Peak Date	Site	Species	Highest observed mean
January 29 - February 3	4	January 31st	Mauger Caye	Nassau grouper	>700
February 27- March 3	5	March 1st	Mauger Caye	Nassau grouper	15
April 28 May 3	6	May 2nd	Caye Bokel	Dog snapper Horse-eye jack	155 224
May 28 - June 2	5	May 30th	Caye Bokel	Cubera snapper Dog snapper Horse-eye jack	900 900 250

Table 1: SPAG dates and data observed during the 2024 SPAG season.

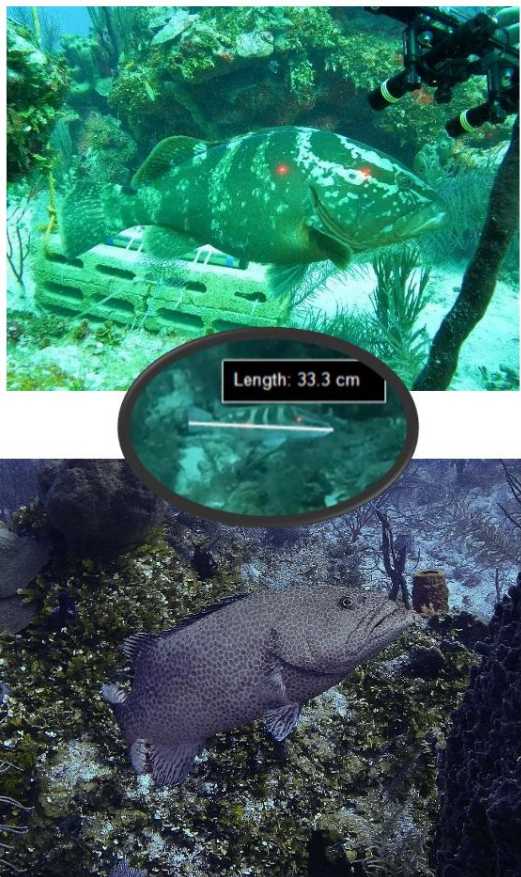
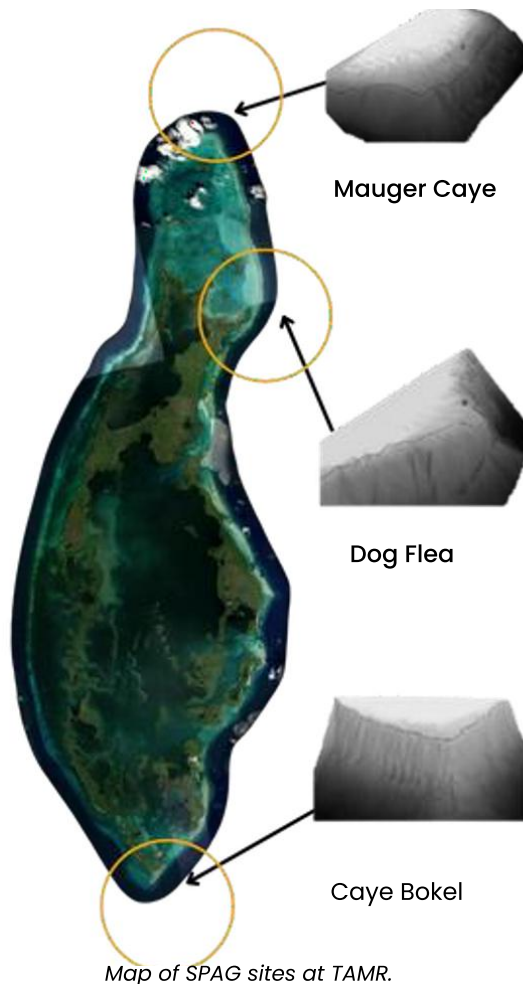


Figure 1: Top Left: Nassau grouper seen at the Mauger Caye SPAG site. Middle Left: Example of a Nassau grouper that was sized using the laser caliper setup. Bottom Left: A tiger grouper seen at the Caye Bokel SPAG site.



**LONG-TERM ATOLL MONITORING (LAMP)**

LAMP surveys assess commercially important species and reef health across different habitat types. Findings from these surveys directly inform fisheries management under the TAMR Management Plan, ensuring that fishery resources are managed sustainably while alternative economic opportunities for fishers are developed.

**Timeline:**

**March 16 - 20: Multi-species LAMP assessment**

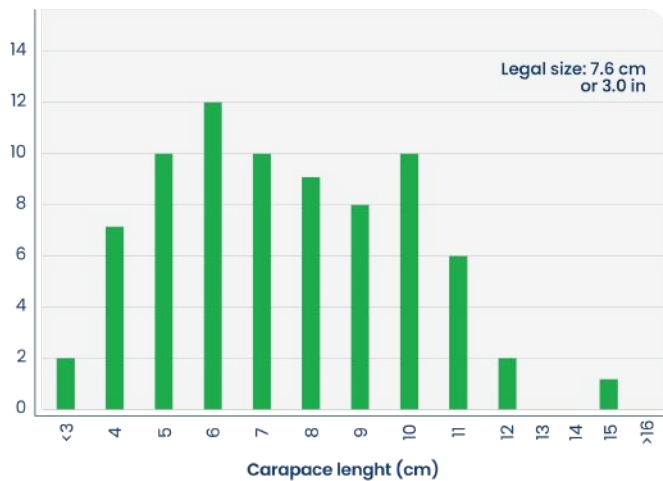
A total of 26 sites were surveyed by the AMP during the March 2024 LAMP surveys carried out at the TAMR. These surveys were carried out with the integral support of both the Tourism Program and the Enforcement Program. Seventy (70) marine reef species were assessed, which included Queen Conch, Caribbean Spiny Lobster, Finfish, Long-spined Urchin, and King Crab. The overall density at the TAMR, based on the data gathered at the surveyed sites, was 364 individuals/ha for Queen Conch, 16 individuals/ha for Caribbean Spiny Lobster, and 38 individuals/100m<sup>2</sup> for Finfish.



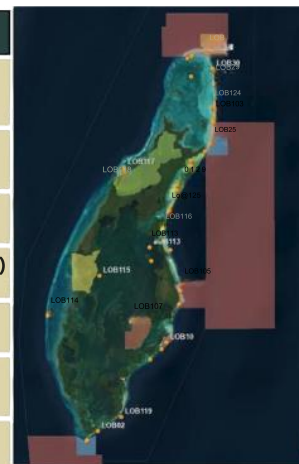
Figure 2: Left: Map of survey sites. Right: Surveyor taking measurements from a conch that was encountered during the March 2024 LAMP surveys.

**June 24 – 28: Lobster LAMP**

A total of 34 sites (8 sites in the Conservation Zones, 4 in the Preservation Zones and 22 sites in the General Use Zone) were surveyed by the AMP during the June 2024 Lobster LAMP surveys carried out at the TAMR. These surveys were carried out with the integral support of both the Tourism Program and the Enforcement Program. The overall estimated density of Caribbean Spiny Lobster at the TAMR, based on the data gathered at the surveyed sites, was 28 individuals/ha.



Metric	Value
Total Lobsters Recorded	77
Mean Lobster Density	28 individuals/ha
Mean Carapace Length	7.5 mm
Highest Density Zone	General Use Zone (84/ha)
Sex Ratio (Male:Female)	2:1
Sites with Tar-Spotted Females	2 (General Use Zone)
Sites with Berried Females	0

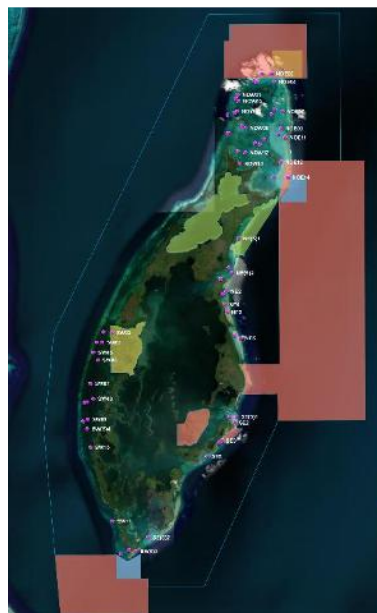


Size frequency graph from the lobsters encountered during the June 2024 LAMP surveys (N=77)

Left: Observations from the June 2024 LAMP surveys. Right: Map of survey sites.

**September 9 – October 30: Conch LAMP, providing critical stock assessment data.**

65 sites were surveyed. Total Count 2,932 plus 62 Samba (Less than 7 inches and with a lip thickness of more than 5 mm) found within the 65 sites that were surveyed. The final report is being finalized.



Left: Map of survey sites. Right: Conservation Science Officer with a Queen conch specimen that was found at one of the survey sites.



**CATCH DATA AND REPORTING**

Catch data is collected throughout the year by Enforcement Officers and compiled by the AMP team, focusing on Caribbean spiny lobster, queen conch, and finfish. This data is entered into the Spatial Monitoring and Reporting Tool (SMART) for processing and analysis, generating indicators that inform fisheries management and enforcement strategies under the TAMR Management Plan. The AMP also provides necessary training and equipment to ensure reliable and consistent data collection. In 2024, a total of 93 vessels and 105 fishers were encountered, most of whom were recurring participants.

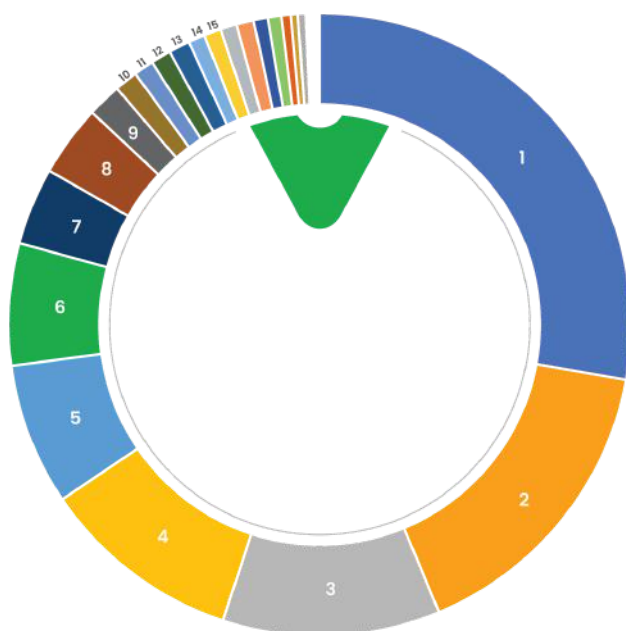


Left: SMART-enabled device being used for catch data collection. Right: A Typical sailboat encountered at TAMR by CO Officers during their patrols

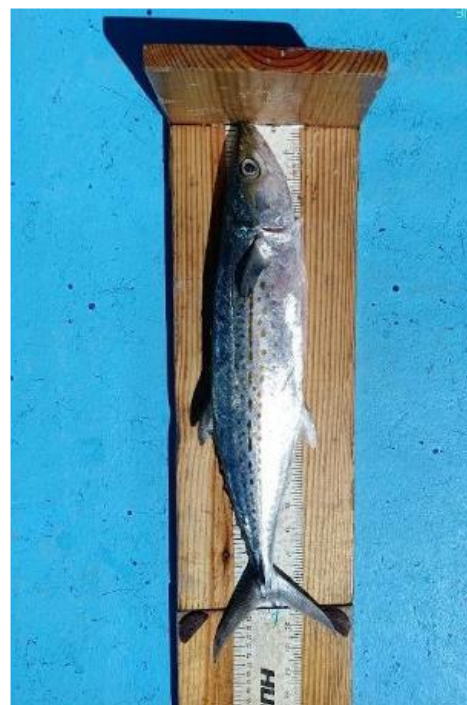
**Timeline:**

**Ongoing throughout the year. Continuous catch data entry and processing**

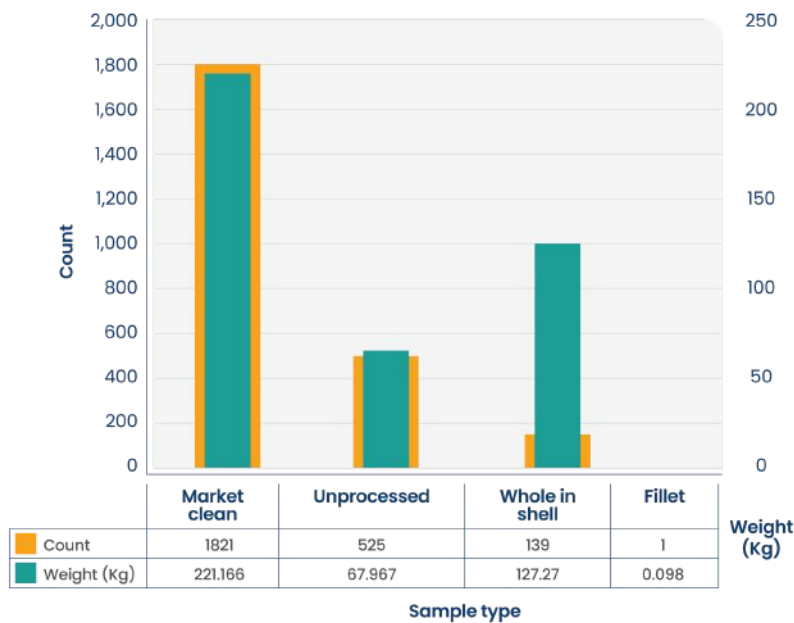
Finfish: 568 total count of fish samples, 26 species of fish, 274 kg total weight (whole and gutted).



- 1 Yellowtail Snapper
- 2 Mutton Snapper
- 3 Schoolmaster
- 4 Hogfish
- 5 Grey Snapper
- 6 Lane Snapper
- 7 Dog Snapper
- 8 French Grunt
- 9 Queen Silk Snapper
- 10 Great Barracuda
- 11 Mahogany Snapper
- 12 King Mackerel
- 13 Pluma Pogy
- 14 Jolthead Pogy
- 15 Horse-eye Jack



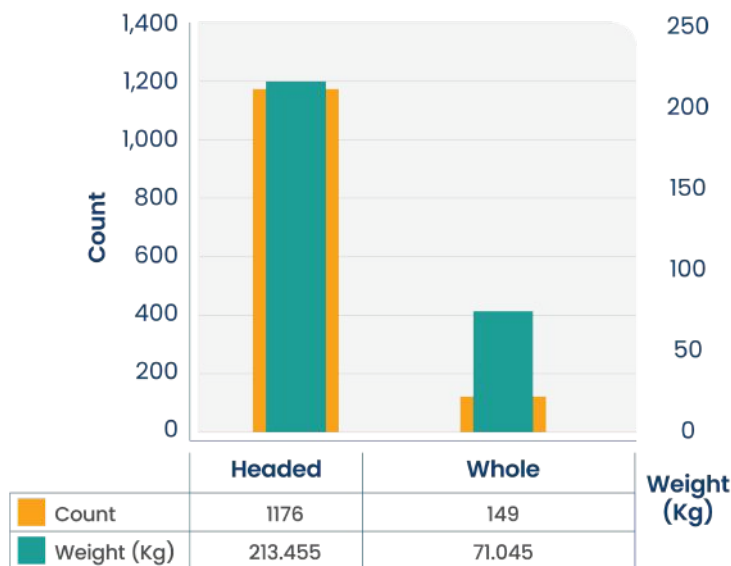
Left: Finfish species composition from the 2024 catch dataset. Right: Spanish mackerel encountered during a catch data survey.



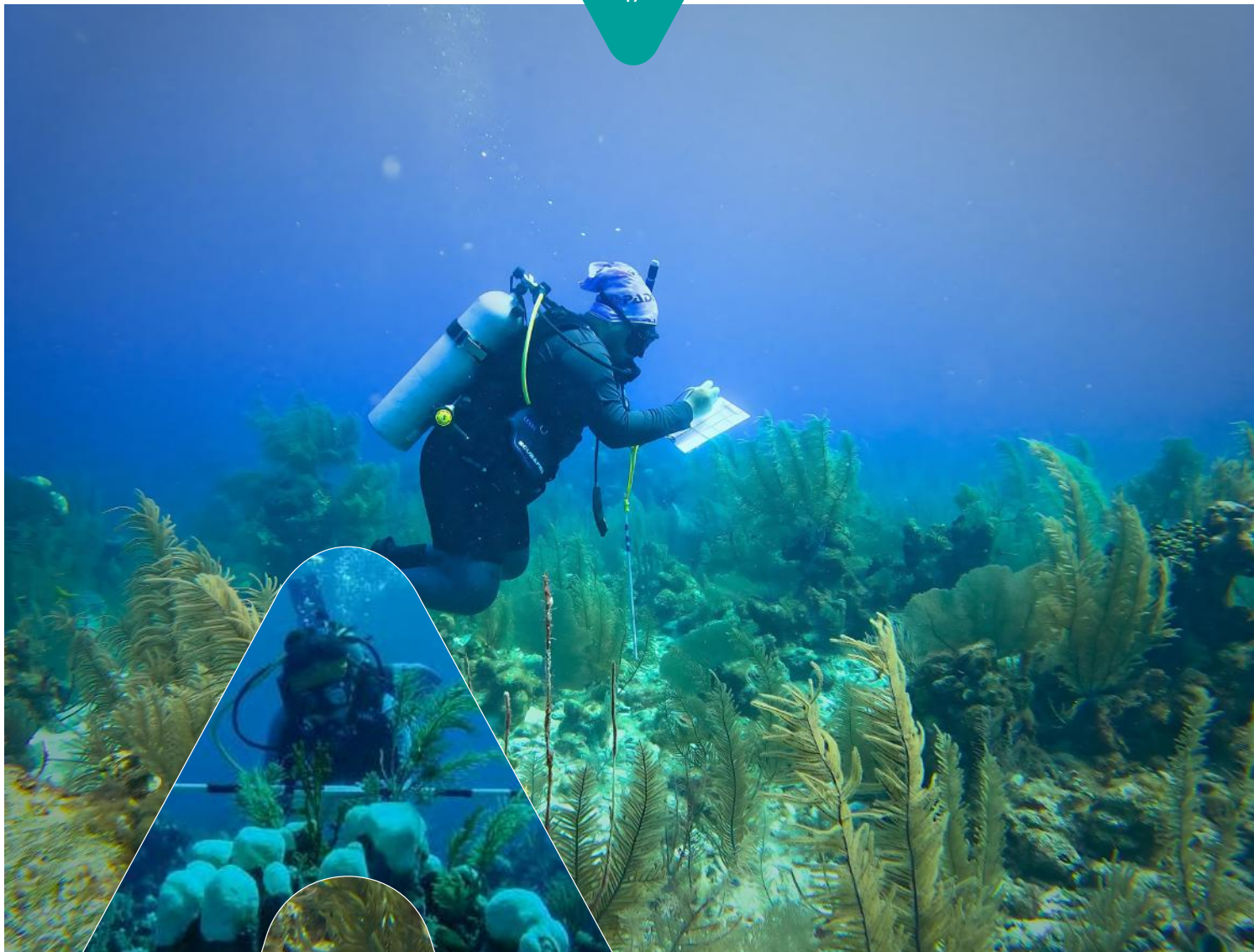
**Conch:** A total of 2,486 conch samples were recorded, with a total weight of 416.5 kg of conch products encountered.

Left: Queen conch specimen encountered during a catch data survey. Right: Count and weight composition of each sample type from the 2024 catch dataset.

**Lobster:** A total of 1,325 Caribbean spiny lobster samples were recorded, with an overall product weight of 284.5 kg. The sex distribution included 672 females and 653 males.



Left: Count and weight composition of each sample type from the 2024 catch dataset. Right: Caribbean Spiny Lobster individual encountered during a catch data survey in 2024.



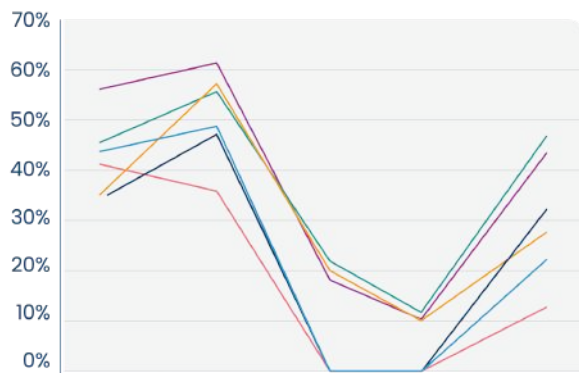
## 2. ECOSYSTEMS HEALTH MONITORING

### Coral Assessments & Bleaching Monitoring

Coral health assessments were conducted at multiple points throughout the year, supporting Objective Two of the TAMR Management Plan: maintaining reef resilience and ensuring coral cover remains stable or improves.

### Bleaching Surveys

Nine bleaching monitoring sites were assessed in 2024, with MP DFR, CZ2 DF,R and WP4 DFR prioritized during the February and March surveys to assess post-bleaching impacts of the bleaching peak observed in November 2023 (Figure 10). Results showed a decrease in the percentage of bleached corals (partially and fully bleached) in November 2024 compared to the same period in 2023.



	Oct '23	Nov '23	Feb '24	Mar '24	Nov '24
MP DFR	56%	61%	18%	8%	42%
CZ2 DFR	44%	55%	24%	10%	46%
WP4 DFR	34%	57%	22%	8%	28%
WP5 SFR	42%	36%	No data		14%
CB SFR	35%	49%	No data		33%
SP SFR	44%	50%	No data		23%

Percentage of coral bleaching at each site surveyed during the 2024 coral bleaching survey

### Comprehensive Coral Reef Assessment (AGRRA).

In total, 40 localities were visited, resulting in 153 transects, 6,992 corals, 39 unique species, 210 instances of stony coral tissue loss disease (SCTLD), and 1,688 instances of bleaching. The highest number of unique species (22) was recorded at locality NW04.C. The most SCTLD instances (23), were found at NW06.C, while the lowest (0) occurred at 14 localities. The highest number of bleaching instances (105, including both pale and fully bleached corals) was recorded at CW01.C, whereas the lowest (15) was observed at CE01.C. HOBO loggers were installed, collecting temperature and light data at the 9 core AGRRA localities.

### Timeline:

- February 2024: Coral bleaching assessment.
- March 2024: Coral bleaching assessment.
- May 28 – June 2: AGRRA coral survey training.
- July 15 – 26: AGRRA coral surveys conducted.
- September 9 – 13: AGRRA coral surveys continued.
- October 7 – November 2: AGRRA coral surveys continued, with no storm-related structural damage observed post-Tropical Storm Nadine.
- November 26 – 27: Coral bleaching assessment. HOBO loggers installed, temperature and light data.



Map of survey sites



Left: Pictures of bleached and diseased coral encountered during the 2024 Coral Surveys. Right: Surveyors arriving at a surveys site.

### TAMR Seaweed Fishers

In 2024, TASA supported the continuation of seaweed farming within TAMR by facilitating the renewal of a seaweed research permit in collaboration with local farmers. Through stakeholder engagement, TASA secured consent to apply for permits on behalf of the farmers, helped establish a formal group to strengthen their collective efforts, and committed to documenting meetings and maintaining ongoing communication. While reaffirming its role as a co-manager focused on ecosystem stewardship, TASA also advocated for farmer representation in the national Seaweed Working Group. This initiative demonstrates TASA's commitment to advancing sustainable alternative livelihoods that are aligned with the conservation goals of TAMR.

### Dive Shed

Completed on May 13, 2024, the AMP dive shed was financed through the Mesoamerican Reef Insurance payout following Hurricane Lisa in 2022. The 16'x20' wooden structure, located on Calabash Island near TASA's headquarters are fully wired and connected to the solar grid. It has contributed to the safety and the efficiency of underwater monitoring activities within TAMR.

### Policy Engagement & National Initiatives

- March 5: TNC Belize Seaweed Aquaculture Symposium
- March 10 - 14: HRI Partner Meeting.
- May 30: Belize Seagrass Policy Workshop.
- June 8 - 15: Developing Coral Restoration Roadmaps for Caribbean Marine Protected Areas
- October 23 - 30: Validation of National Marine Litter Monitoring Plan & Regional Beach Litter Training.
- December 3 - 4: SMART Training at BFD.
- 

### Contributing to National Conversations and Initiatives: Participation throughout the year.

- National Coral Reef Monitoring Network
- Spawning Aggregation Working Group Seaweed Working Group
- Flat Fishery Working Group
- Belize Sea Turtle Conservation Network
- Belize Sustainable Ocean Plan Steering Committee



Seaweed drying on racks after harvesting and rinsing with fresh water.

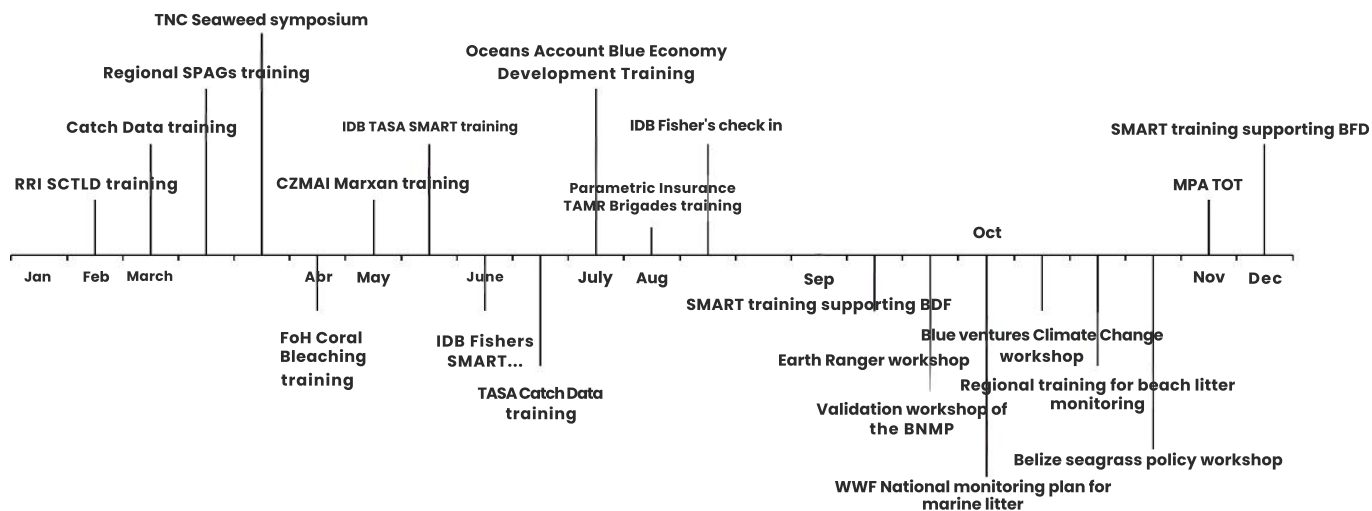


Conservation Science Officers taking out dive gear from the AMP dive shed.



### 3. CAPACITY BUILDING

The AMP team engaged in multiple training sessions to enhance data collection, enforcement, and reef restoration skills. These efforts contribute to Objective One (fisheries management), Objective Two (reef resilience), and Objective Three (sustainable tourism).



### 4. SPECIAL PROJECTS & POLICY ENGAGEMENT

#### Seaweed Extraction Initiative

From November 17, 2023 to February 3, 2024, AMP collaborated with the Eco-Tourism and Enforcement Programs, along with volunteers, to manually remove *Kappaphycus alvarezii* from seagrass beds in the Turneffe Atoll Marine Reserve using mesh bags and snorkel gear. This activity was prioritized to mitigate any potential ecological degradation.



Conservation Officer examines the seaweed extracted from a seagrass bed.



Technology Solutions Manager conducting monthly check-in with fishers for the collection of Catch Data.

#### Fishers. Catch Data Program

From August 20–22, 2024, the Adaptive Management Program conducted a check-in with fishers participating in the SMART Fishers Catch Data Component under the IDB LAB Project, a project aimed at providing fishers resources to document their fishing catch and effort. Fishers are equipped with an android device programmed with the SMART application, along with tools to measure commercial species caught. The team provided one-on-one support to fishers, resolving technical issues, clarifying data entry procedures, and reinforcing the use of the SMART Catch and Catch Log packages. Over the course of the trip, twelve commercial vessels were engaged, and catch data for lobster and fin fish were collected. This activity highlights TASA's commitment to supporting fisher participation in data-driven management and enhancing the accuracy of resource monitoring within TAMR.

# Adaptive Management Highlights

## Catch Data and Reporting



**2,486**

Queen conch samples were recorded



**1,325**

Caribbean spiny lobster samples were recorded



**568**

Finfish total, 26 species of fish

## Comprehensive Coral Reef Assessment (AGRR)



**40**

localities were visited resulting in 153 transects



**6,992**

Corals, 39 unique species



**210**

instances of stony coral tissue loss disease (SCTLD)



**1,688**

instances of Coral bleaching

## Fish Spawning Aggregations (SPAGs) Monitoring



**700**

Maximum average of Nassau Grouper



**20**

Monitoring Dives during 2024 SPAG Season



**900**

Maximum average of Dog Snapper



**900**

Maximum average of Cubera Snapper



## Financial Sustainability Program

The Financial Sustainability Program employs innovative strategies to boost environmental awareness & stewardship, lead destination marketing, promote sustainable practices, and enhance visitor experiences and engagement. These efforts aim to support more sustainable and predictable sources of revenue for TASA by leveraging tourism as a driver for sustainable financing.

### 2024 Visitation

Turneffe Atoll welcomed a total of 8,013 visitors in 2024, consisting of both overnight and day guests. Among these, 3,266 visitors stayed multiple days across the four resorts on the atoll, while the remainder arrived via liveboards passing through Turneffe or day trips originating from mainland Belize City, Caye Caulker, San Pedro, and even as far south as Hopkins. This represents a slight decrease compared to 2023 in overall visitation.

A significant portion of visitors to Turneffe Atoll in 2024 came from North America. These guests were drawn to the atoll's diverse offerings, including world-class scuba diving, flats fishing, atoll eco-adventures, and research opportunities in its pristine marine ecosystem.

Despite the slight decrease in visitation, TASA successfully maximized revenue from the same visitor base. This impressive increase in revenue aligns with TASA's high-value, low-impact tourism model, which prioritizes sustainability and conservation. Key contributors to this success include partnerships with Turneffe Island Resort, Turneffe Flats, and the mid-2024 addition of Belize Dive Haven to the conservation contributor program. These resorts play a critical role in promoting eco-friendly tourism, ensuring Turneffe Atoll continues to be both an exceptional destination and a well-protected ecosystem.



### Visit Turneffe Mobile App Launched in 2024

The Turneffe Atoll Sustainability Association proudly launched the “Visit Turneffe” mobile app, offering a one-stop shop experience to enhance conservation and stakeholder engagement in Belize’s renowned Turneffe Atoll. This comprehensive tool features detailed maps, all mooring points, channel markers, and in-depth educational resources on local biodiversity. Its interactive platform empowers users to become citizen scientists by submitting photographic reports and spatial data on species sightings, fostering community-driven data collection and environmental stewardship. A unique badge system further rewards participation, deepening user engagement.

Developed through a collaboration between TeamMate AI and Miranda Wagner Designs and supported by funding from partners such as IDB-Lab and The Belize Fund, the app showcases the value of collective effort in conservation. By filling monitoring gaps and promoting sustainable tourism, “Visit Turneffe” makes it easier than ever to explore, protect, and connect with one of Belize’s most treasured marine ecosystems. Now available on iOS and Android.



### Blue Talks Program

The Blue Talks Program thrived in 2024, showcasing the power of collaboration with Turneffe Island Resort, Blackbird Caye Dive Resort, and Turneffe Flats Resort. Together, 104 presentations were delivered, significantly raising awareness and fostering a deeper connection to environmental stewardship. This collective effort fueled incredible growth, with donations to TASA increasing by 57% compared to 2023, a remarkable achievement further amplified by matching funds. Top single donation this year was BZ\$50,000 to purchase a Patrol Boat from a guest at Turneffe Flats.

Visitors enthusiastically supported the program, with caps and Rash Guards remaining the top-selling merchandise. Many are actively engaged by asking insightful questions about conservation initiatives, enforcement measures, and science monitoring. These interactions reflect the program’s growing influence in inspiring action and advocacy within the marine-based academic community.



We deeply appreciate the unwavering support of these three outstanding resorts, whose contributions are vital to this ongoing success.

### Offline Marketing

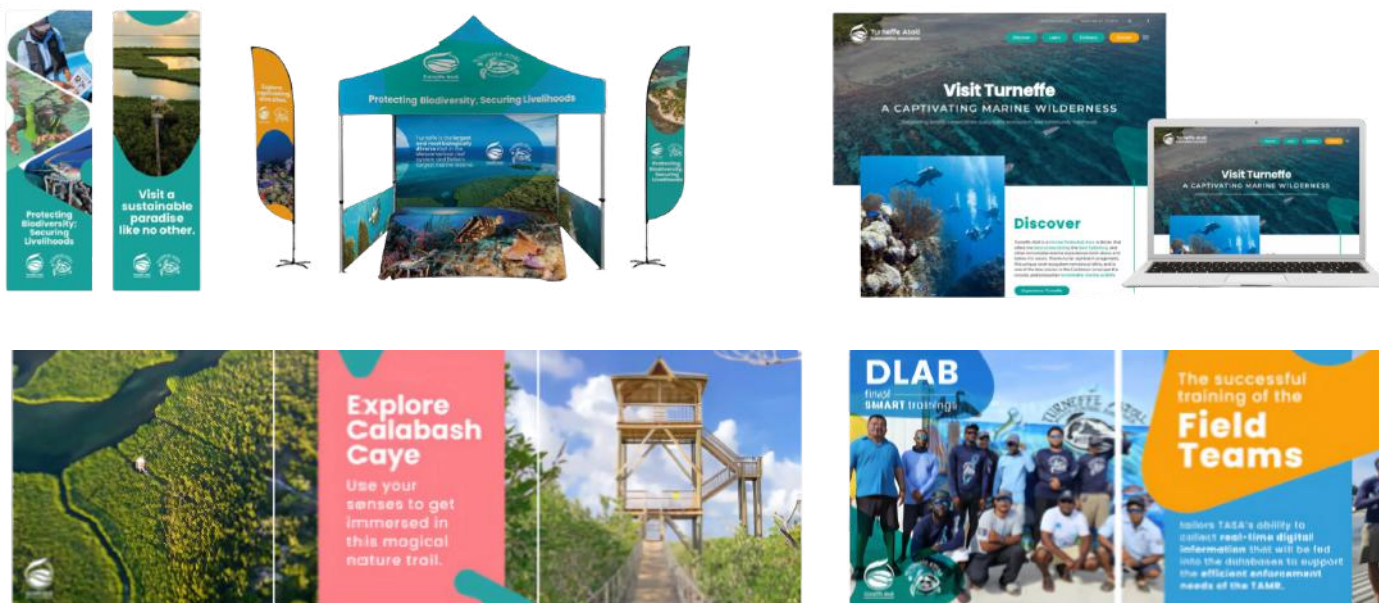
Throughout 2024, TASA/Turneffe gained significant recognition through renowned publications, thanks to hosting international journalists earlier in the year. Their experiences led to features like The Times UK’s article showcasing Turneffe’s natural beauty and importance in marine conservation. This success was driven by a strong partnership with the European Nature Trust, emphasizing the power of collaboration in raising awareness. Additionally, TASA was featured in a special Oceanus Magazine edition, shedding light on coral bleaching and the critical role Turneffe plays in protecting marine ecosystems.

At DEMA 2024 in Las Vegas, TASA’s impactful presence was bolstered by partnerships with Blackbird Caye Dive Resort and Elite Diving Adventures. Together, they highlighted the Turneffe Atoll’s vibrant ecosystems and conservation-focused tourism. Demonstrations of the Visit Turneffe App engaged attendees, showcasing its interactive features. Blackbird Caye promoted sustainable practices and the iconic Wit Wreck, while Elite Diving showcased eco-tours. Connections with industry leaders like DAN World and Lionfish University were also forged, strengthening Turneffe’s standing as a premier marine destination and conservation leader.



### Digital Marketing

The Turneffe Atoll Sustainability Association accomplished major digital marketing milestones in 2024, backed by IDB-Lab funding. Partnering with consultants from Satellite Leon, TASA developed a robust digital marketing strategy and a detailed brand book to maintain consistent and impactful messaging. A key success was integrating Donor Box into its website, streamlining donations and raising over BZ\$22,000 in 2024 to bolster conservation efforts. This feature, paired with enhanced email marketing, significantly improved donor engagement. Another highlight was securing full ownership of the Visit Turneffe website, giving TASA greater autonomy over its digital platform. These achievements underline TASA’s commitment to utilizing innovative strategies to expand its reach, strengthen audience engagement, and champion the preservation of Turneffe Atoll’s marine biodiversity. Through strategic planning and collaboration, TASA continues to set new benchmarks for conservation and digital innovation.

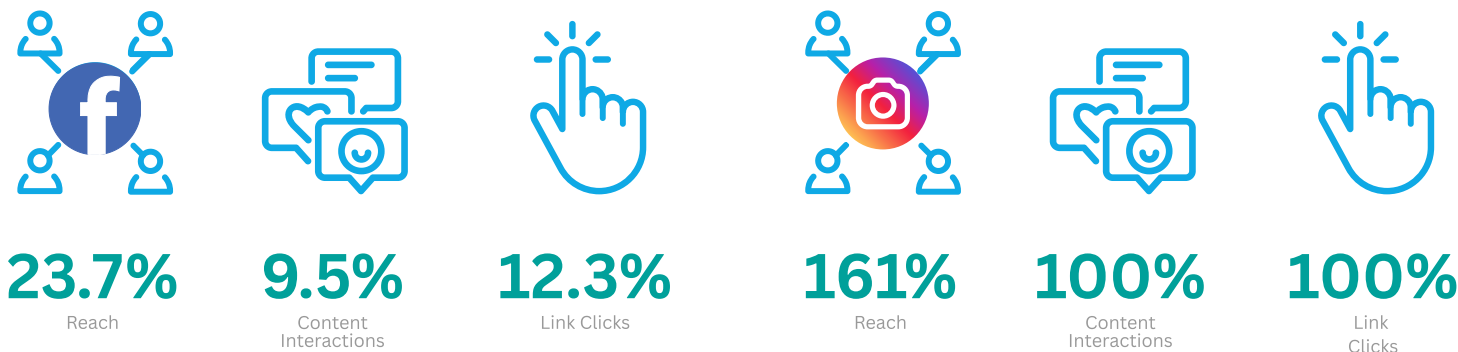


### Facebook Overview

The diagram showcases TASA’s Facebook success in 2024, with notable year-over-year growth. Reach increased by 23.7%, content interactions grew by 9.5%, and link clicks rose by 12.3% compared to 2023. These gains reflect our enhanced engagement and the effectiveness of our digital outreach efforts.

### Instagram Overview

TASA achieved remarkable growth on Instagram in 2024. Reach soared by over 161%, while content interactions and link clicks both increased by more than 100% compared to 2023. These results demonstrate the success of our strategies in strengthening engagement and expanding our digital presence.



### Digital Marketing

Over the course of 2024, our website saw substantial engagement, attracting 15,000 new users and maintaining 15,000 active users. The average engagement time per active user was 51 seconds, reflecting steady interaction across our digital platforms.

Top traffic sources included Organic Search (6,200 sessions), Paid Search (4,200 sessions), and Direct traffic (3,700 sessions), showcasing a balanced mix of acquisition strategies. Geographically, the majority of users originated from the United States (4,800) followed by Belize (2,200), highlighting our reach across key regions.

Content performance was a standout, with a total of 27,000 page views. The most viewed pages were "A Captivating Marine Wilderness" (9,400 views), followed by "The Best Scuba Diving in Belize" (3,900 views). Key user actions included 572 file downloads, 1,300 clicks, and 16,000 user engagements, demonstrating high interaction levels with the site's features.

These results underline strong user interest and provide a solid foundation to refine strategies for deeper engagement and sustained growth in the coming year.



15K

Active Users



15K

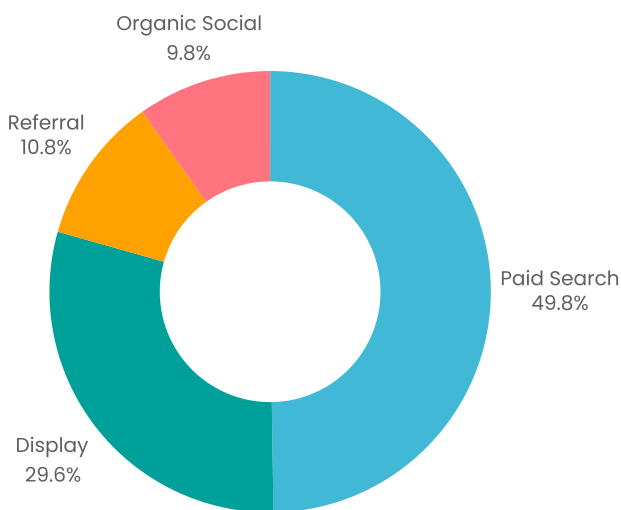
New Users



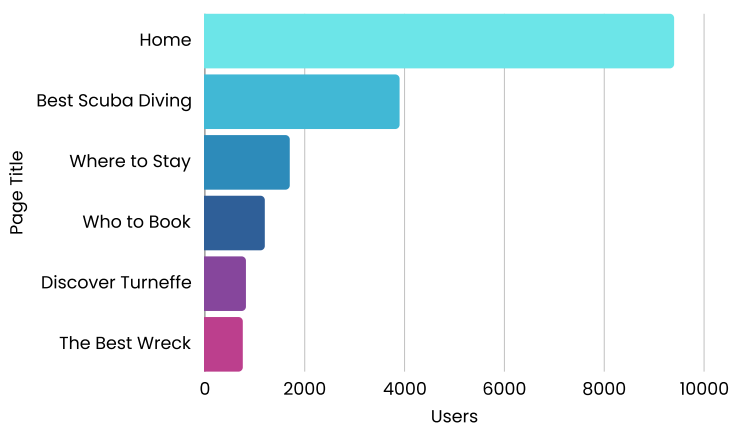
51s

Average time per user

Session by Traffic Acquisition



Users Page Views



User Activity overtime



806  
30 days

185  
7 days

29  
1 day

Activity user by Country



4.8K  
United States

2.2K  
Belize

1.2K  
India

912  
Canada

550  
China

### Learning Exchanges and Capacity Building

TASA underscored its dedication to growth and innovation through impactful capacity-building initiatives in 2024. The Financial Sustainability Director played a vital mentorship role for MPA Connect learning exchanges, collaborating with Eastern Caribbean marine conservation organizations. This partnership highlighted TASA's Blue Talk program and tourism-based financing strategies, promoting regional sustainability.

As part of the IDB project, the Director also completed an intensive 4-week Digital Marketing training to spearhead TASA's Digital Marketing Strategy. Additionally, Conservation Officers Eldon and Berris gained Wreck Diving certification, Hubert received Creative Storytelling training, and the entire team participated in conflict resolution sessions to strengthen teamwork and problem-solving capabilities.



### Channel Marker Network

With 26 moorings and 11 channel markers in place, TASA continues to ensure reliable marine infrastructure. While moorings remain sturdy, channel markers face challenges with detachment. To tackle this, we changed the designs of the actual marker buoys, but there is still much work to be done on the connecting mechanism.



Leveraging our SMART system, enforcement officers check moorings during patrols, with a 7-day window to resolve any issues. Quarterly maintenance also ensures longevity and safety. These combined efforts reflect TASA's dedication to preserving Turneffe Atoll's navigation aids and fostering a secure marine environment for all stakeholders.





### TASA Won Prestigious Sustainability Award at World Sustainable Travel & Hospitality Awards

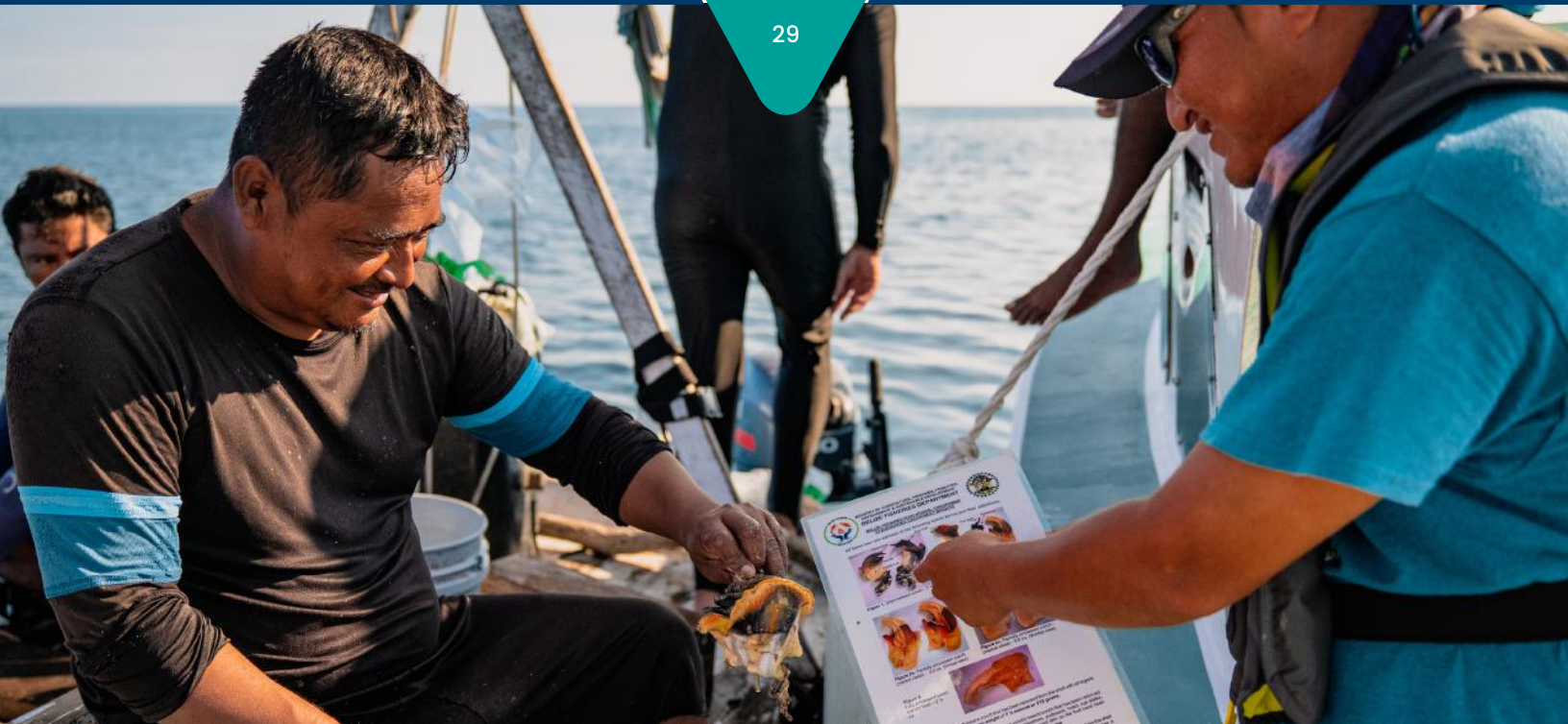
The Turneffe Atoll Sustainability Association received a well-deserved accolade, being named the "Leading Sustainable Marine Conservation Initiative 2024" at the inaugural World Sustainable Travel & Hospitality Awards. This prestigious award recognized TASA's relentless commitment to safeguarding Turneffe Atoll, one of the most ecologically diverse coral atolls in the world.

For over a decade, TASA has redefined what it means to lead in marine conservation. From innovative enforcement programs to science-driven adaptive management, the organization has established itself as a leading marine conservation organization. Our initiatives in education, outreach, tourism, and financial sustainability underscore the power of harmonizing ecological protection with economic opportunity.

This achievement symbolizes more than just TASA's groundbreaking work. It is a testament to the strength of community-driven conservation. Every effort, from the dedication of TASA's team and board to the support of donors, partners, visitors, and local stakeholders, has culminated in this success. The collaboration has proved that when innovation and collaboration intersect, sustainability flourishes.

Turneffe Atoll's vibrant marine ecosystem stands as a reminder of what is possible when we act with purpose.





## Education and Community Outreach

### Boat to Boat Sessions with Fishers

In 2024, TASA prioritized direct engagement with **275 local fishers** through three targeted Boat-to-Boat outreach activities at the Turneffe Atoll Marine Reserve. These initiatives were strategically designed to align with significant moments in the fishing calendar, promoting sustainable practices and fostering collaboration with our fishing stakeholders.

### Overview of Activities

#### February - Lobster Closed Season

TASA conducted the first outreach session in February, focusing on the lobster closed season. This activity was carried out in partnership with the Belize Fisheries Department and emphasized the importance of adhering to seasonal closures to support the recovery and sustainability of lobster populations.

#### June - Lobster Season Opening

The second outreach was organized in June for the opening of the lobster season. This session provided critical information on sustainable harvesting practices and regulatory updates regarding lobsters, equipping fishers with the knowledge needed to comply with guidelines while maximizing the long-term benefits of the fishery.

#### September - Preparation for Conch Season

In September, we conducted our final outreach activity before the conch season opened. This session focused on essential conservation measures to maintain a sustainable conch population, ensuring that fishers adhere to size, weight, and zoning regulations.

### Strengthening Collaboration

Collaboration remains a core principle of TASA's management approach at TAMR. By engaging directly with fishers, TASA has strengthened relationships within the local community, ensuring that conservation efforts are supported by those who rely on the atoll's resources. Initiatives like these highlight the critical role fishers play as partners in safeguarding the biodiversity and ecological integrity of Turneffe Atoll.

The 2024 Boat-to-Boat outreach activities have been a vital element of TASA's broader strategy to balance the needs of nature and livelihoods. Moving forward, TASA will continue to build on these efforts, ensuring that conservation goals are achieved through ongoing dialogue, education, and collaboration.



## Reef Week 2024



**Debate Competition:** As part of Reef Week 2024, TASA hosted the inaugural Turneffe Blues Speech and Debate Tournament, featuring teams from Itz'at STEAM Academy and St. Catherine Academy (SCA). After a spirited debate, Itz'at STEAM Academy emerged victorious, earning an educational visit to the Turneffe Atoll Marine Reserve. Individual awards included Best Opening Argument Speaker, Rayvon Usher (Itz'at); Best Rebuttal and Cross-Examination Speaker, Elroy Tucker (Itz'at); and Best Closing Argument Speaker, Isabella Waldman (SCA).

The debate tackled the resolution, "Be it resolved that Belize has a sufficient framework and mechanisms in place to protect our coral reef from the impact of the tourism and fisheries industry." TASA extends heartfelt thanks to participating schools, coordinators, judges, the UB Environmental Club, and supporters who made this celebration of environmental stewardship a success.

**Marine Education Day at Turneffe Atoll:** Reef Week Debate winners from Itz'at STEAM Academy enjoyed an enriching Marine Education Day at Turneffe Atoll Marine Reserve, accompanied by teacher mentors and parents. The group explored TASA's conservation initiatives, walked the nature trail, learned about marine species, and witnessed technology like SMART (Spatial Monitoring and Reporting Tool) in action.

The day also included swimming and hands-on insights into marine resource management. Thanks to TASA's conservation officers and education coordinator, the experience inspired future conservationists. TASA looks forward to hosting more school trips, fostering environmental stewardship among Belize's youth.



### Poster Competition for Reef Week

The TASA Poster Competition during Reef Week 2024 highlighted the creativity of primary school students from Sarteneja, Chunox, Copperbank, and Progreso. Participants expressed their vision for coral reef conservation through artwork inspired by this year's theme, "Unite in the Coral Reef Fight: Learn, teach and do what's right." This initiative reflects TASA's dedication to fostering conservation education and inspiring the next generation of environmental stewards.

#### 1st Place: Colin Yacab, Sarteneja Nazarene Primary



#### 2nd Place: Navea Saragoza, Sarteneja Nazarene Primary



#### 3rd Place: Lawrence Bennett, Sarteneja RC



### SocMon Methodology Training for MPA Managers

TASA proudly supported the Socioeconomic Monitoring (SocMon) Methodology Training held in San Ignacio, Cayo District, facilitated by Dr. Jay Coombs and her team from the Center for Applied Development Studies (CADS). Sponsored by NOAA funding, the training aimed to enhance the capacity of marine protected area (MPA) managers and field staff from across Belize to collect, analyze, and integrate socioeconomic data into marine conservation planning and policies.



Participants included representatives from MPA sites such as Blue Hole and Half Moon Natural Monuments (Belize Audubon Society), Turneffe Atoll Marine Reserve (TASA), South Water Caye Marine Reserve (Belize Fisheries Department), and Port Honduras Marine Reserve (Toledo Institute for Development and Environment), as well as the Southern Environmental Association.

This initiative empowers Belize's MPA managers with essential tools for effective coastal resource management, benefiting fisheries and tourism stakeholders while fostering sustainable practices. TASA team members Devon Gabourel, Arlette Arana, and Kevin Novelo represented the organization, reinforcing our commitment to capacity building and collaborative conservation efforts. The training marks a significant step in strengthening Belize's MPA network for long-term resource sustainability.





## Admin & Human Resources Management

### Mission & Vision

TASA's Human Resources department aims to create a positive, inclusive, and forward-thinking environment where team members feel empowered to develop and succeed.

Vision: To shape a dynamic, high-performance team that delivers exceptional results and fosters a positive, engaging work environment.

### Key Objectives:

1. Aligning HR Strategies with TASA's goals: Align our HR initiatives with the overall strategic objectives of TASA, ensuring that our practices contribute to TASA's success.

2. Talent Acquisition & Retention: Aim to attract and select the best candidates while retaining and developing our current team,

3. Engagement and Satisfaction: Aim to promote a culture of engagement & satisfaction among team members by fostering a positive environment, providing opportunities for growth, development, and promoting a work-life balance.

4. Compliance: The Administration & HR Department is committed to ensuring compliance with labour laws and ethical standards, protecting the rights of both employees and the organization.

5. Continuous Improvement: TASA is dedicated to continuously improving HR processes and practices and adopting innovative approaches to enhance efficiency and effectiveness.

### TASA's Governance Structure

TASA is directly governed by the Fisheries Department and its Advisory Council, to which the Board of Directors report to.

The Board appoints an Executive Director who oversees the daily operations of the organization, delegating the management of its various programs to specific Program Directors, who have under their immediate management, Administrative, Conservation, Enforcement and Adaptive Management staff, all contribute to the overall strategy and operation of the organization.



### 2024 Staffing

Below is the table showing the composition of employees for TASA by Program/Department at year end 2024:

TASA's Total Headcount by Department 2024	
Department	Number of Staff by Department
Executive Director	1
Finance & Administration	6
Financial Sustainability	5
Enforcement	17
Adaptive Management	5
Development Program	1
<b>Total Staff</b>	<b>35</b>

### 2024 Staffing

TASA is committed to investing in its team members through training and development as it is crucial to the formation of stronger teams, and to the improvement of performance, thus creating higher levels of engagement. In addition to improving job-specific skills, training and development programs foster a culture of continuous learning, making employees more agile, engaged and capable of taking on future challenges.

Throughout the year Program Directors identify key training opportunities and ensure that team members take advantage of these training. The following are key training courses and events in 2024 that staff members participated in.

Training	Finance & Admin	Adaptive Management	Financial Sustainability	Enforcement	Grand Total
Aquaculture training		3			3
Climate Change Forum		1			1
Dive training		1	2		3
Grants Management	2				2
Mangrove Restoration training		1			1
Marine Litter training		1			1
MPA training		5			5
Enforcement Assessment				9	9
Reef/ Coral training, Monitoring and Restoration.		5	2		7
Supervisory Management				6	6
Conflict Management		2	4		6
<b>Grand Total</b>	<b>2</b>	<b>19</b>	<b>8</b>	<b>15</b>	<b>44</b>



### Bi-Annual Staff Meeting

In August, the TASA team gathered at Calabash Caye Headquarters for its Bi-Annual Staff Meeting. The event featured comprehensive updates from Program Directors, highlighting achievements and addressing challenges from the first half of the year.

The meeting focused on enhancing organizational policies and fostering open communication among staff. Team-building activities provided an opportunity for strategic collaboration, motivation, and problem-solving. Despite funding challenges, prioritizing staff wellness and team development remains essential.

TASA remains committed to driving effective management of Turneffe Atoll through innovation, collaboration, and inspiring positive change.



## Annual General Meeting



TASA hosted its Annual General Meeting on November 5, 2024, bringing together members and staff to reflect on achievements, address challenges, and outline future objectives. Executive Director Valdemar Andrade reaffirmed TASA's focus on sustainability and innovation in marine resource management.

The event featured an engaging video presentation with updates from Program Directors across Enforcement, Adaptive Management, Financial Sustainability, Community Engagement, Grants, and Governance. The Financial Report highlighted strategic investments and fiscal responsibility, underscoring efforts to bolster Turneffe Atoll's management.



This gathering reinforced TASA's leadership in marine conservation and Belize's dedication to environmental sustainability.



## Employee of the Year 2024

This year, we celebrate Hubert Gillet, our Tourism Manager, as TASA's Employee of the Year. Hubert's unwavering dedication, boundless energy, and infectious positivity have left a remarkable impression on everyone he works with. His ability to connect with people, whether through his powerful storytelling or his genuine empathy, inspires not only his colleagues but also the stakeholders and partners he engages with.

From supporting cross-departmental efforts to ensuring that TASA's mission of sustainable tourism shines in every initiative, Hubert has gone above and beyond. His humor and enthusiasm create a vibrant atmosphere, making each interaction memorable and uplifting.





### Employee Recognition

TASA believes that recognition lets team members know their efforts are vital to the growth and development of the organization. Once a year TASA recognizes key team members for their outstanding performance, each program is responsible for selecting an Ultimate Achiever.

For the Year 2024 the following team members were recognized:

- 1.Ultimate Achiever Award -Tourism and Financial Sustainability - Berris Torres
- 2.Ultimate Achiever Award-Enforcement Program - Jairo Osorio
- 3.Ultimate Achiever Award-Adaptive Management Program – Kevin Novelo
- 4.Ultimate Achiever Award- Finance Program - Maria Catzim
- 5.Phenomenal Leadership - Joseph Villafranco
- 6.Employee of the Year 2024 – Hubert Gillett
- In addition to the above awards, all team members were given the opportunity to vote for the employee of the year award and the Aldo Catzim Award.

The Aldo Catzim Award is given to the most outstanding boat captain for the year, this is given in honor of Aldo Catzim a key team member and an outstanding boat captain who died in 2021.

Recipient of the Aldo Catzim Award - Berris Torres



## Financial Status

The Turneffe Atoll Sustainability Association (TASA) is a non-profit NGO and the official co-manager of the Turneffe Atoll Marine Reserve, working in partnership with the Government of Belize. The overall mission is to create a self-sustaining and resilient world-class marine reserve through innovative and adaptive interventions for the benefit of the people and country of Belize.

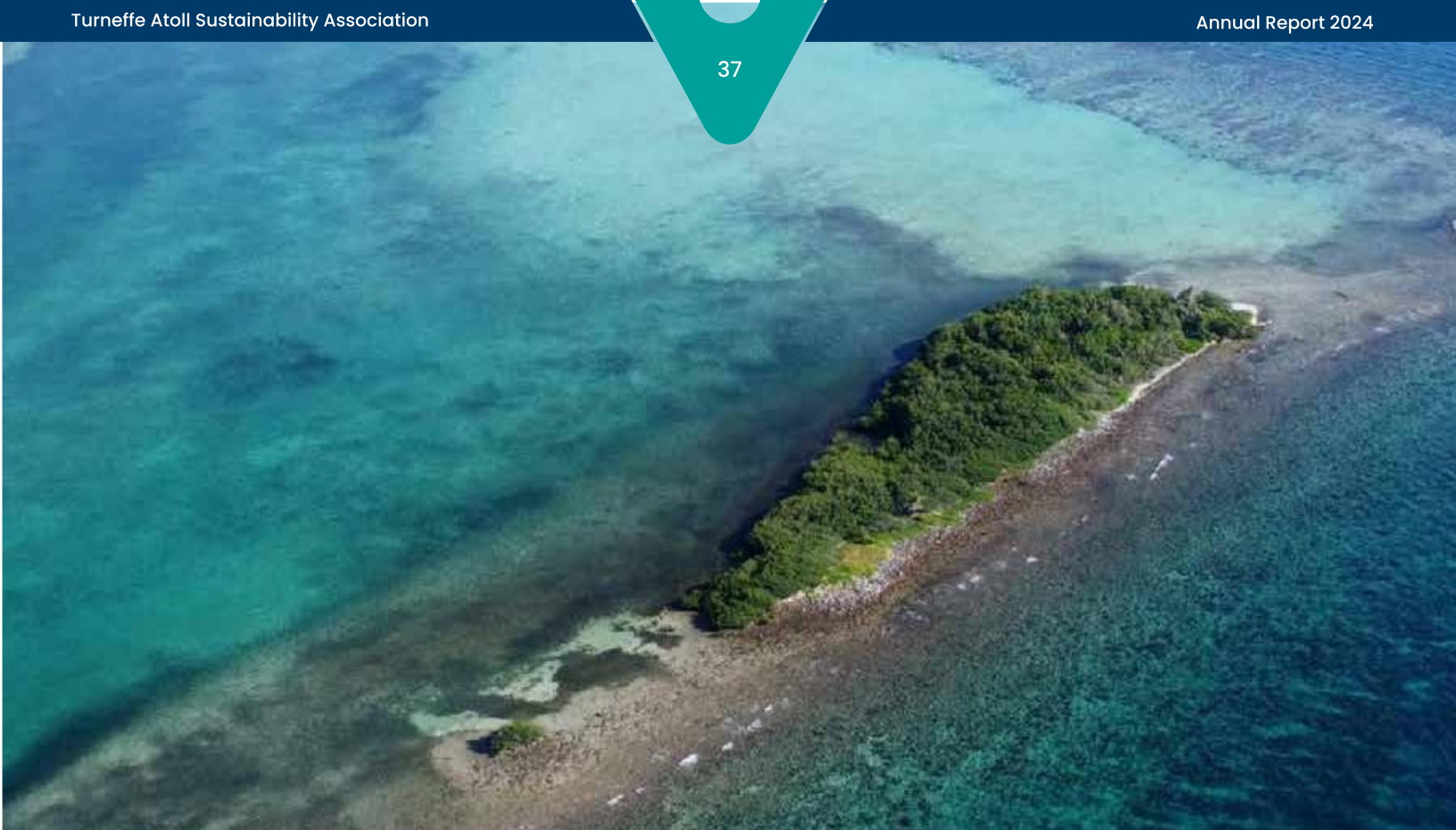
The financials clearly demonstrate how grant funding and donations are used for TASA's mission. Of significance to note is that Sponsorship from grants and donors increase by 43% and income from financial Sustainability Component increase by 20% in 2024.

<b>Turneffe Atoll Sustainability Association</b>	
<b>Profit and Loss</b>	
<b>January-December, 2024</b>	
<b>Income</b>	
<b>Sponsorship from Grants and Donors</b>	<b>\$ 3,529,022.00</b>
<b>Income from TASA Financial Sustainability component</b>	<b>\$ 960,163.00</b>
<b>TOTAL INCOME</b>	<b>\$ 4,489,185.00</b>
<b>EXPENSE</b>	
<b>Enforcement / Operations Program</b>	<b>\$ 875,686.56</b>
<b>Financial Sustainability Program</b>	<b>\$ 640,331.85</b>
<b>Science and Monitoring Program</b>	<b>\$ 452,730.93</b>
<b>Education &amp; Outreach Program</b>	<b>\$ 148,829.24</b>
<b>Administrative Expenses</b>	<b>\$ 1,026,848.42</b>
<b>Other Expenses</b>	<b>\$ 180,744.00</b>
	<b>\$ 3,325,171.00</b>
<b>Net Income Before Depreciation</b>	<b>\$ 1,164,014.00</b>
<b>Less Depreciation on property and equipment</b>	<b>\$ (310,018.00)</b>
<b>NET SURPLUS FOR THE YEAR</b>	<b>\$ 853,997.00</b>

Donations and grant funding are used to sustain TASA's programs, such as the Enforcement Program, Tourism Program, Operations Program, Science and Monitoring Program, Education and Outreach Program, and of course, all this cannot be accomplished without key administrative support.

In addition to grant funding for specific projects, TASA also receives direct funding for fixed assets that support the organization's work. As shown in the Balance Sheet, total assets for TASA at the end of the financial year 2024 totaled \$6Million, of which \$5.1 million are fixed assets, which is an increase of 17% from 2023.

<b>Turneffe Atoll Sustainability Association</b>	
<b>Balance Sheet</b>	
<b>December 31, 2024</b>	
<b>Current Assets</b>	
<b>Cash and cash equivalents -restricted</b>	<b>\$ 783,616.00</b>
<b>Cash and cash equivalents - unrestricted</b>	<b>\$ 38,504.00</b>
<b>Account Receivable</b>	<b>\$ 123,845.00</b>
<b>Prepayment and other assets</b>	<b>\$ 57,247.00</b>
<b>Non- Current Assets</b>	<b>\$ 1,003,212.00</b>
<b>Property and Equipment</b>	<b>\$ 5,155,138.00</b>
<b>Total Assets</b>	<b>\$ 6,158,350.00</b>



# TAMR Ambassador and Ways to Support

Thank you to our 2024 partners, donors and TAMR Ambassadors for their unwavering commitment to the sustainable management of the Turneffe Atoll Marine Reserve. We acknowledge that our achievements are a result of collaborative efforts and the generosity of those who believe in our mission.

## TAMR AMBASSADORS



## PARTNERS

- Ministry of Blue Economy and Civil Aviation
- Ministry of Finance
- Blue Bond and Finance Permanence Unit,
- Office of the Prime Minister
- Belize Fisheries Department
- The Belize Coast Guard
- Department of Environment
- Forest Department
- Ministry of Tourism & Diaspora Relations
- Coastal Zone Management Authority and Institute
- The Anthropocene Institute/Protected Seas
- Belize Marine Protected Areas Network
- Belize Network of NGOs
- Blue Ventures
- National Fishermen Producers Co-Operative Society Ltd
- Northern Fishermen Co-operative Society Ltd
- Jason Young (Turneffe Fisher)
- Dale Fairweather (Turneffe Fisher)
- Elmer Rodriguez (Turneffe Fisher)
- Turneffe Flats
- Turneffe Island Resort
- Blackbird Caye Resort
- Blue Finance
- Belize Tourism Board
- Belize Port Authority
- University of Belize/UB-Environmental
- Research Institute (UB-ERI)
- Louis Leslie
- MAR Alliance



# DONORS

- IDB Lab
- The Belize Fund
- Resilient Reef Initiative
- MAR Fund
- Belize Marine Fund
- Environmental Defense Fund
- CZMAI
- Global Conservation
- TASA's Financial Sustainability Program
- UNDP
- The European Nature Trust
- Irish Aid
- Healthy Reefs Initiative
- NOAA
- Turneffe Flats
- Fauna and Flora
- The Nature Conservancy
- Yellow Dog
- Ambwani Family
- Ahern Family
- Protected Areas Conservation Trust
- Glenn Haas
- MPA Connect
- Arntz Family Foundation





# Ways to Support

When you donate to the Turneffe Atoll Marine Reserve, you can be certain that you are making a real contribution to the conservation of this very special ecosystem. That's because 100% of your donation will go to support the work of TASA – the Turneffe Atoll Sustainability Association. TASA protects and preserves Turneffe Atoll and the Marine Protected Area (MPA) that surrounds it. TASA's work is indispensable to maintaining the viability of the Turneffe ecosystem – but they need your support to ensure that they can continue their vital work.



DONATE TASA →



amazon wishlist →





# TURNEFFE ATOLL MARINE RESERVE





Turneffe Atoll  
Sustainability Association



---

**Annual Report 2024**  
Belize City | Calabash Caye | Caye Bokel | Mauger Caye