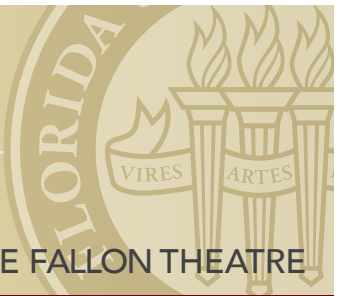


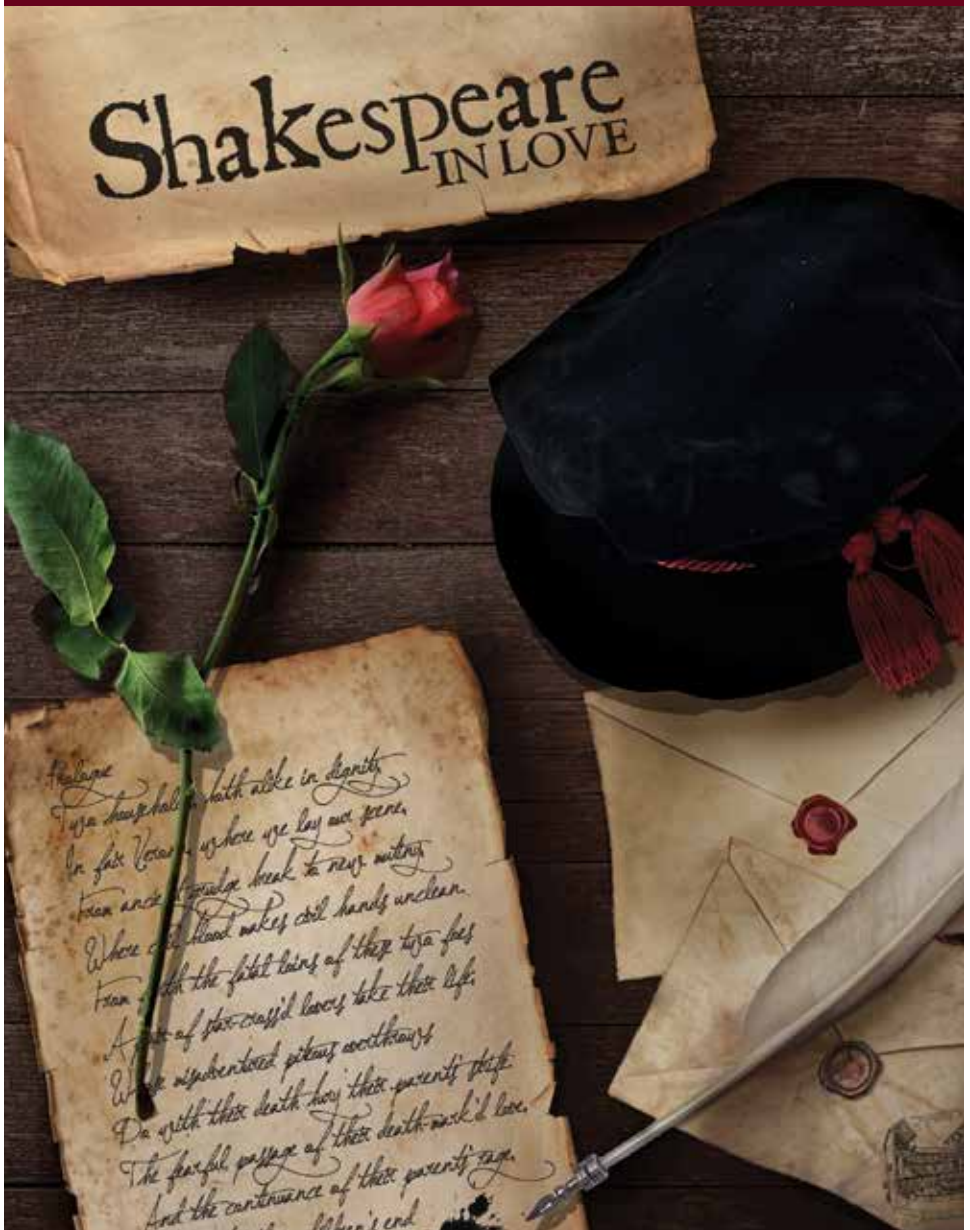
The School of Theatre

AT FLORIDA STATE



2018 - 2019 SEASON

THE FALLON THEATRE

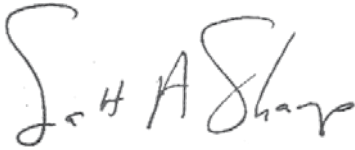


Shakespeare
IN LOVE

*Challenge
Two heads halberd both alike in dignity
In fair Verona where we lay our scene,
From ancient grudge break to new mutiny,
Where civil blood makes civil hands unclean.
From forth the fatal loins of these two foes
A pair of star-cross'd lovers take their life;
Who, separated by their parents' strife,
Do with their death hours their parents' strife
The fearful passage of their death-mark'd love,
And the continuance of their parents' rage,
Which but their children's end*

From the College of Fine Arts' Dean

Prepare to be amazed! Every time I sit where you are right now, I marvel at the magic our students create on this stage. For 45 years, the School of Theatre at FSU has brought the thrill of live theatre to FSU and Tallahassee audiences alike. Before this evening is over, you will see why our program has become one of the nation's most distinguished. Alumni who have performed here have gone on to prestigious careers – on Broadway and in a multitude of other professions in theatre and beyond. While talent is a big part of their success, our students excel because of the hard work and dedication of our committed faculty and staff. You play an important role as well! Your attendance and support mean the world to our students. Great actors need great audiences! Thanks for being a part of our theatre community. Enjoy the show!



Scott Shamp
Interim Dean, College of Fine Arts

From the School of Theatre's Executive Director

Welcome to our 45th year at the School of Theatre. We are so thankful you are joining us to share your stories and engage in the ones we are presenting on stage.

The School of Theatre is committed to a learning environment that builds on our rich past as it enters a new year – encouraging excellence, imagination, artistry, and leadership to empower our students to create the theatre of the future. The strength of our Students, our Faculty, and our Staff is on display in the classrooms, shops, and on the stages here in Tallahassee and around the nation. Our alumni continue to lead the way across the nation in all of their endeavors as they change the world with what they learned here at Florida State.

Our ability to present theatre in meaningful ways depends on the deep and continued generosity of YOU – our patrons, donors, and community. It is fitting to take this moment to thank each of you for your varied and deep, individual connections and financial contributions to the School of Theatre. Thank you so much for being part of the arts in Tallahassee and especially with us here at the School of Theatre.



Cameron Jackson
Executive Director, The School of Theatre

The School of Theatre at Florida State Presents

Shakespeare IN LOVE

Based on the screenplay by
Marc Norman & Tom Stoppard

Adapted for the stage by
Lee Hall

Music by
Paddy Cunneen

Director
Fred Chappell

Music Director
Lance McGee

Movement Director
Jason Paul Tate

Scenic Designer
Michelle Harvey

Costume Designer
Julianne Babel

Lighting Designer
Scott Guenther

Sound Designer
Zach Cramer

Technical Director
Cliff Glowacki

Voice & Dialect Coach
Debra Hale

Choreographer
Kate Watson Gelabert

Dramaturg
Merritt Denman

Stage Manager
Julia Bodolay

October 19 - 28, 2018
The Fallon Theatre

Originally produced on the West End by Disney Theatrical Productions & Sonia Friedman Productions, directed by Declan Donnellan, and designed by Nick Ormerod.

“**Shakespeare in Love**” is presented by special arrangement with SAMUEL FRENCH, INC.

THE VIDEOTAPING OR MAKING OF ELECTRONIC OR OTHER AUDIO AND/OR VISUAL RECORDINGS OF THIS PRODUCTION OR DISTRIBUTING RECORDINGS ON ANY MEDIUM, INCLUDING THE INTERNET, IS STRICTLY PROHIBITED, A VIOLATION OF THE AUTHOR'S RIGHTS AND ACTIONABLE UNDER UNITED STATES COPYRIGHT LAW. FOR MORE INFORMATION, PLEASE VISIT: WWW.SAMUELFRENCH.COM/WHITEPAPER

The Cast

In Order of Appearance

Will Shakespeare.....	Weston Warren
Marlowe.....	Simon Beckham
Henslowe.....	Enzo Everett
Fennyman.....	Nicholas Palazzo
Lambert, Catling, Guard, Heavy.....	Liam Wirsansky
Frees.....	Anderson Khochaiche
Burbage.....	Christian Douglass
Mistress Quickly, Kate, Court.....	Alison Wood
Tilney.....	Atticus Taylor
Actor, Waiter, Guard.....	Seth Robbins
Queen Elizabeth.....	Samantha Murphy
Peter.....	Tyler Covington
Proteus, Abraham.....	Zach Duncan
Viola De Lesseps.....	Jena Brooks
Nurse.....	Amanda Fernandez-Acosta
Ralph.....	Bradley Ford Betros
Nol.....	Jonathan Santos
Barman.....	Lucas Kish
Robin.....	Ryan Dienesch-Calamari
Adam, Boatman.....	David Benne
Webster.....	Ryon Eberhard
Wabash.....	Nicholas Benetatos
Lord Wessex.....	Tanner Holman
Sir Robert De Lesseps.....	Christian Meany
Ned Alleyn.....	Blake Lafita
Sam.....	Nick Clark
Molly.....	Ariel Baron

Setting:

London, 1593

*Understudies**

Will Shakespeare.....	Simon Beckham
Marlowe.....	David Benne
Henslowe.....	Lucas Kish
Fennyman, Ralph.....	Anderson Khochaiche
Burbage.....	Tyler Covington
Actor, Robin, Adam, Boatman, Webster.....	Zach Duncan
Queen, Nurse.....	Ariel Baron
Viola De Lesseps.....	Alison Wood
Wabash.....	Liam Wirsansky
Lord Wessex, Ned Alleyn.....	Christian Douglass
Sam.....	Seth Robbins

**Understudies never substitute for listed players unless a specific announcement is made at the time of the performance*

The School of Theatre at Florida State

As one of the top-tier theatre training programs in the nation, the School of Theatre at Florida State provides its students with a wide variety of theatrical and educational opportunities. The primary mission of the School of Theatre is to offer students a comprehensive education in theatre and to prepare emerging artists to enter the professional theatre industry. As a result, the School of Theatre provides both student artists and community audience members a diverse array of productions that explore the spectrum of our shared humanity.

Founded in 1973 under the vision and leadership of then-Dean Richard G. Fallon, the School of Theatre enjoys a national reputation, in large part, because of the excellence of its undergraduate and graduate programs, as well as a gifted faculty of nationally recognized professional artists/educators. The London Theatre Studies program, the chance to work side by side with guest artists and eminent scholars, as well as showcase opportunities in New York City and Los Angeles are just a few of the many reasons why students are attracted to our various professional and academic degrees from all over the United States, many foreign countries, and every county in Florida.

Alumni of the program include Broadway stars Christiani Pitts, Montego Glover, and Leslie Flesner, television producer Steven Sears, Emmy Award-winners John Papsidera and John Brace, Broadway producers Heather Provost and Darren Bagert, Playwright and Professor Suzan Zeder, and a host of talented entertainment industry professionals. Through their creative work, research, publication, and service, School of Theatre alumni contribute to the commercial, educational, and cultural life of the citizens of Florida and the nation.

**The School of Theatre at Florida State is a member of the
University/Resident Theatre Association, Inc. and is accredited
by the National Association of Schools of Theatre.**

UP NEXT

A NEW BRAIN

November 2 - 11, 2018

Lab Theatre

tickets.fsu.edu · 850.644.6500

OUR 2018-2019

Season

EURYDICE

Oct 5 -

Oct 14

The Lab Theatre

Shakespeare
IN LOVE

Oct 19 -

Oct 28

The Fallon Theatre

A NEW BRAIN

Nov 2 -

Nov 11

The Lab Theatre

The Musical
Pinkalicious

Nov 15 -

Nov 18

The Fallon Theatre

hairspray
• THE BROADWAY MUSICAL •

Feb 15 -

Feb 24

The Fallon Theatre

MR. BURNS
A POST-ELECTRIC PLAY

Apr 5 -

Apr 14

The Lab Theatre

Cast Headshots



Ariel Baron



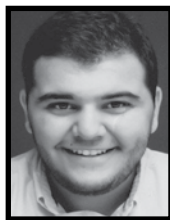
Simon Beckham



Nicholas Benetatos



David Benne



Bradley Ford Betros



Jena Brooks



Nick Clark



Tyler Covington



Ryan Dienesch-Calamari



Christian Douglass



Zach Duncan



Ryon Eberhard



Enzo Everett



Amanda Fernandez-Acosta



Tanner Holman

Cast Headshots



Anderson Khochaiche



Lucas Kish



Blake Lafita



Christian Meany



Samantha Murphy



Nicholas Palazzo



Seth Robbins



Jonathan Santos



Atticus Taylor



Weston Warren



Liam Wirsansky



Alison Wood

From the Director, Fred Chappell

Adapted for the stage from the film and screenplay by Tom Stoppard and Marc Norman, *Shakespeare in Love* is, ironically, a celebration of the art of live theatre. Like the film, the play brings the backstage carryings-on of Elizabethan theatre vividly to life with an imagined incident in the life of the master of English-speaking theatre, William Shakespeare. Through the down-to-earth and gritty treatment of the play, “Will” and his theatrical fellows are toppled from their pedestals of historical pretentiousness and their human frailties are revealed and extolled. Through the characters’ day-to-day frustrations and triumphs we come to recognize the plights of Elizabethan players parallel those of contemporary actors, writers, managers and financiers in their struggle to create theatre. Enjoy with us this envisioning of the world of William Shakespeare, as vibrant with aliveness as the actors you see on this stage!

Special thanks:

Sarah M. Jahnke and Jeffrey Kuang, Oregon Shakespeare Festival,
and Gleen A. Breed of Wadrobe Witchery.

Be a part of the journey...

The Florida State University College of Music will present more than 500 world-class performances by faculty, guest artist, and student musicians during the 2018–2019 concert season.

To find out more, please visit music.fsu.edu
or follow us on social media.

YouTube: /musicFSU

Facebook.com/musicFSU



FLORIDA STATE UNIVERSITY
COLLEGE OF MUSIC

Twitter.com/musicFSU

Instagram.com/musicFSU

From the Dramaturg, Merritt Denman

Shall I set down the rest of the Conjectures which constitute the giant Biography of William Shakespeare? It would strain the Unabridged Dictionary to hold them. He is a Brontosaur: nine bones and six hundred barrels of plaster of paris.

- Mark Twain, "Is Shakespeare Dead?"

What is actually known about the person of William Shakespeare is surprisingly little. So the notion of staging a play about the life of a man about whom we know so little might seem a bit odd. We cannot speak with any authority as to the nature of Shakespeare's relationships with his wife or his friends. We cannot state with certainty who he loved and lost. We cannot even be sure about his exact date of birth. And while logical inferences and educated guesses can give us a much fuller portrait of the Bard, it is not such facts and figures with which *Shakespeare in Love* concerns itself. This text instead treats history as play. With the original screenplay, Tom Stoppard (who is also a playwright) took the myths and legends which surround the colossal figure of Shakespeare as well as the facts which are known about him and created a snapshot of life in Shakespeare's world. Stoppard populated the world with actual historical figures like Richard Burbage, Christopher Marlowe, and Philip Henslowe. In so doing he breathes life into history. By taking the facts which can seem lifeless and dead in a history book and bringing them to life onstage, we are reminded that those who lived before us were just as human as we are. They worked, they built families, they had debts, they fought, they *lived*. In *Shakespeare in Love* we are reminded that those who preceded us are not mere lines in a text book, but that they are human. So even if we cannot say much for certain about the lives of the Elizabethan theatre makers we can imagine what their lives might have been like and in so doing let them live on through us.

It seems to me that as a man of the theatre, William Shakespeare would have loved this play because he understood something about the nature of theatre itself: the theatre does not point us to facts, but to truths. One of the many purposes of the theatre is to teach us something about ourselves and the world, and despite the dearth of facts about Shakespeare's life, this play illustrates larger truths about art, life, and love. Ultimately this play is a theatrical love letter to the art of theatre and what it can accomplish in our lives.

**Local
SeniorDiscounts.com®**

Eat • Shop • Play • Discover

Who's Who

Ariel Baron (Molly, u/s Queen, u/s Nurse) is a senior BA Theatre major from Coral Springs, FL. Previous credits include *The Addams Family* (Grandma Addams), *A Day in the Death of Joe Egg* (Grace), and *How I Became a Pirate* (Maxine the Pirate). She thanks her parents, her brother, and her friends.

Simon Beckham (Marlowe, u/s Will Shakespeare) is a junior BFA Acting major from Athens, GA. Previous credits include *Tartuffe*, *Dr. Seuss's The Cat in the Hat*, and *The Servant of Two Masters*. He thanks his parents, friends, and mentors for getting him this far. Here's to all the places yet to come!

Nicholas Benetatos (Wabash) is a junior BA Theatre major from Weston, FL. Previous credits include *Romeo and Juliet* (Prince). He thanks his family and friends for all their love and support.

David Benne (Adam, Boatman, u/s Marlowe) is a sophomore BFA Acting major from Satellite Beach, FL. He was last seen on the FSU stage in *Tartuffe* (Valère). He thanks his friends and family for all their love and support along this journey.

Bradley Ford Betros (Ralph) is a senior BM Music Theatre major from Jacksonville, FL. Previous credits include *Jesus Christ Superstar* at SurfFlight Theatre and *The Addams Family* (Fester Addams) and *Guys and Dolls* (Big Jule) at FSU. He would like to thank his friends and his parents.

Jena Brooks (Viola De Lesseps) is a junior BFA Acting major from Greenville, SC. Previous credits include *As You Like It* and *The Servant of Two Masters* at FSU and *HAIR* at GLOW Lyric Theatre. She thanks her family for their unconditional love and support.

Nick Clark (Sam) is a sophomore BFA Acting major hailing from Flowery Branch, GA. His previous credits include *Wanda's Visit* (Waiter) and *Three Penny Opera* (Mrs. Peachum). It is with a deep humility that Nick thanks his family for every opportunity that has been passed along his way.

Tyler Covington (Peter, u/s Burbage) is a freshman BFA Music Theatre major from Orlando, FL. Previous credits include *Big River* (Jim), *Shakespeare In Hollywood* (Oberon), *Into the Woods* (Wolf), and *Altar Boyz* (Luke). He thanks his parents for supporting him and allowing him to go to FSU.

Ryan Dienesch-Calamari (Robin) is a freshman BA Theatre major from Orlando, FL. Previous credits include *Briar Rose* (Narrator), *Dogface* (Rita), and *Julius Caesar* (Metellus Cimber). He thanks his parents, Karen and George Dienesch-Calamari.

Christian Douglass (Burbage, u/s Lord Wessex, u/s Ned Alleyn) is a senior BA Theatre and Communications double major from Orlando, FL. Previous FSU credits include *Tartuffe*, *The Servant of Two Masters*, and *How I Became a Pirate*. He thanks his Mom, Dad, Katelyn, Ryan, Aunt Rose, and Granny for their endless love and support.

Zach Duncan (Proteus, Abraham, u/s Actor, u/s Robin, u/s Adam, u/s Boatman, u/s Webster) is a sophomore BA Theatre major from Newnan, GA. Previous FSU credits include *The Addams Family* (Pugsley Addams), *A Christmas Carol* (Young Scrooge), and *Guys and Dolls* (Albert). He thanks his family and friends and wishes a happy show.

Ryon Eberhard (Webster) is a freshman BA Theatre major from Tampa, FL. He is so excited to be in his first School of Theatre production. He thanks his family and friends for all their love and support as he continues with theatre at FSU.

Enzo Everett (Henslowe) is a senior BA Theatre and Psychology double major from Fort Pierce, FL. Previous credits include *Tartuffe* (The Officer, u/s Clèante), *Killer Joe* (Killer Joe), *Frankenstein* (Henry Clerval), and MFA Devised One-Acts (Detective). He would like to thank God and his loving family and friends.

Who's Who

Amanda Fernandez-Acosta (Nurse) is a senior BA Theatre major from Miami, FL. Previous credits include *Tartuffe* (Elmire), *The Real Inspector Hound* (Mrs. Drudge), *The Taming of the Shrew* (Kate), and *In the Heights* (Daniela). She thanks her family, friends, and the creative team.

Tanner Holman (Lord Wessex) is a junior BFA Acting major from Sarasota, FL. Previous credits include *Tartuffe* (Damis), *Rosencrantz and Guildenstern are Dead* (Alfred), and *The Servant of Two Masters* (Silvio). He thanks his friends and family for their support.

Anderson Khochaiche (Frees, u/s Fennyman, u/s Ralph) is a sophomore BFA Acting major from Lake Worth, FL. Previous credits include *As You Like It* (Duke Senior), *Lend Me A Tenor* (Tito Merelli), and *Dr. Faustus* (Wagner). He thanks his friends and family for inspiring him.

Lucas Kish (Barman, u/s Henslowe) is a freshman BA Theatre major from Jacksonville, FL. He thanks the directors and School of Theatre for the opportunity and his friends and family for the support over the years.

Blake Lafita (Ned Alleyn) is a junior BFA Acting major. He was last seen on the FSU stage in *Rosencrantz and Guildenstern are Dead* (Rosencrantz). He is grateful to work his most treasured craft in collaboration with the great minds and personalities of the FSU theatre community.

Christian Meany (Sir Robert De Lesseps) is a sophomore BA Theatre major from Tampa, FL. Previous credits include *The Real Inspector Hound* (Magnus Muldoon), *Big Fish* (Will Bloom), and *In the Heights* (Benny). He thanks his parents and Fred for this opportunity.

Samantha Murphy (Queen Elizabeth) is a sophomore BA Theatre major from Chester, NY. Previous credits include *Rent* (Maureen), *Fiddler on the Roof* (Golde), and *Oliver!* (Nancy). She thanks her friends and her mom for their endless love and support.

Nicholas Palazzo (Fennyman) is a junior BA Theatre major from Pembroke Pines, FL. He was last seen on the FSU stage in *Rosencrantz and Guildenstern are Dead*. He thanks Fred for this opportunity, as well as his friends and family for all of their love and support.

Seth Robbins (Actor, Waiter, Guard, u/s Sam) is a junior BA Theatre and Business Marketing double major from Atlanta, GA. Previous credits include *The Real Inspector Hound* (Simon Gascoyne) and *Tinder. Facebook. Twitter. Lie.* (Brett). He thanks Mom, Dad, friends, and mentors for inspiring his journey.

Jonathan Santos (Nol) is a sophomore BA Theatre major from Miami, FL. This is his first mainstage production at FSU. He thanks his family and friends for their continued support and Fred for this amazing opportunity.

Atticus Taylor (Tilney) is a freshman BA Theatre major from Sarasota, FL. Previous credits include *The Crucible* (John Hale), *James and the Giant Peach* (Centipede), and *Hello, Dolly!* (Rudolph/Ensemble). He thanks Scott Keys, Sarah Johnson, and his parents.

Weston Warren (Will Shakespeare) is a sophomore BFA Music Theatre major from Marietta, GA. Previous FSU credits include *Guys and Dolls* and New Horizons: Original Works Festival production of *As You Like It*. He thanks his friends and family for their enthusiastic support.

Liam Wirsansky (Lambert, Catling, Guard, Heavy, u/s Wabash) is a sophomore BA Theatre major. He was last seen in *Rosencrantz and Guildenstern are Dead*. He serves as the President of White Mouse Theatre Productions and is extremely thankful for the opportunity to help bring such an excellent play to life!

Alison Wood (Mistress Quickly, Kate, Court, u/s Viola De Lesseps, Fight Captain) is a junior BFA Acting major from Annapolis, MD. She was last seen in *A Day In The Death Of Joe Egg* (u/s Pam). She thanks her family and teachers for their unending support.

Who's Who

Julianne Babel (Costume Designer) is a third year MFA Costume Design candidate. She earned her BFA in Theatre Technology and Design from Western Michigan University. Her previous works include *Dr. Seuss's The Cat in the Hat*, *Curious George and the Golden Meatball*, *Big Love*, *The Mystery of Edwin Drood*, *Jingle Arch the Way*, and *Charlotte's Web*.

Julia Bodolay (Stage Manager) is a junior BA Theatre and Editing, Writing, Media double major from Clearwater, FL. Previous Assistant Stage Management credits include *The Addams Family*, *Rosencrantz and Guildenstern Are Dead*, and *The Flick*. She thanks her family, friends, and dog Lucy for supporting her theatrical endeavors.

Fred Chappell (Director) teaches acting in the BFA Acting and Music Theatre programs. Selected directing credits at FSU include *Spring Awakening*, *The Seagull*, *RENT*, *She Stoops to Conquer*, *Crazy for You*, *Urinetown*, *Angels in America*, *Hair*, *Noises Off*, *Chicago*, and *Ragtime*. Mr. Chappell also directs the Benefit Concerts and those have included *Camelot*, *Kiss Me, Kate*, *Carousel*, *South Pacific*, *The Fantasticks*, and *The Music Man*. Prior to joining the FSU faculty, Mr. Chappell was the Artistic Director of the Alliance Theatre in Atlanta for ten years. Under his directorship, the theatre produced *Antony and Cleopatra* with Jane Alexander, *Othello* with Richard Dreyfuss and Paul Winfield, the premiere of Tennessee Williams' *Tiger Tale*, and the original production of *Come Back to the Five and Dime, Jimmy Dean, Jimmy Dean* with Fannie Flag and Dana Ivey. For twelve years, he served as Artistic Director of North Carolina's prestigious outdoor drama, *The Lost Colony*. He has guest directed throughout the nation at such companies as the Walnut Street Theatre in Philadelphia, the Kennedy Center in Washington, DC, A Contemporary Theatre in Seattle, and the Alabama Shakespeare Festival. As an actor, he has appeared on Broadway, in regional theatre, and he played Antonio Salieri in FSU's production of *Amadeus*. Mr. Chappell was a recipient of the Georgia Governor's Honor Award for Outstanding Contributions to the Arts and has received an Outstanding Achievement Award from the Georgia Theatre Conference. He was elected into Leadership Georgia and has served as a panelist for the National Endowment for the Arts and for both the Georgia and Florida Council for the Arts.

Zach Cramer (Sound Designer) is the staff Sound Designer for the FSU School of Theatre. He has been involved with theatre for over nineteen years and has since designed over 80 productions. Selected design credits include *The Who's Tommy*, *Peter Pan*, *Ragtime*, *Seussical The Musical*, *Nine* (winner 2008 FTC, 2009 SETC and advanced to national AACT), *Titanic*, *The Producers*, *The Addams Family*, *A Day in the Death of Joe Egg*, *Hedda Gabler*, *Legally Blonde*, and *Monty Python's Spamalot*. He is also the Sound Designer for Valdosta State University's Peach State Summer Theatre.

Merritt Denman (Dramaturg) received her BA from the University Scholars program at Baylor University in 2013. After graduating, she taught middle and high school Theatre and French. She received her MA in Theatre Studies from Baylor University in 2016 and is currently a second year Ph.D. Theatre Studies candidate at FSU. Her research interests include nineteenth and twentieth century American Theatre, issues of Orientalism and cultural othering, and comedy throughout history.

Kate Watson Gelabert (Choreographer) is an Associate Professor and the Director of the BFA Music Theatre program. She has choreographed the majority of musicals presented by the School of Theatre, as well as several works produced by the College of Music and the School of Dance here at FSU. Kate has worked as a guest instructor and choreographer for the Broadway Artists Intensive, FAU's Festival Rep 2015, Pennsylvania Centre Stage Theater, Seaside Music Theater, Florida Dance Association, The Musical Theater Project of Tampa (directed by Ann Reinking), Southern Ballet Theatre (now Orlando Ballet), Walt Disney World, the Burt Reynolds Institute for Theatre Training, and the Universidad Nacional Departments of Theatre and Dance in San Jose, Costa Rica. She has received the FSU Teaching Award, is a two-time recipient of the FSU Teaching Incentive Award, and the 2008 Guardian of the Flame recipient for the College of Visual Arts, Theatre and Dance. Kate served for three years as a national adjudicator for the National Foundation for Advancement in the Arts (NFAA), YoungArts program, and is a current and original member of the Musical Theatre Educators Alliance – International.

Who's Who

Cliff Glowacki (Technical Director) is a second year MFA Technical Production candidate. He earned his BFA in Theatre Design/Technology from Kent State University in 2017 after working on productions like *Bus Stop* ('16) and *Macbeth* ('17). Cliff has worked as the TD for the Frank Center and Marinoff Theaters at the Contemporary American Theater Festival with *Pen/man/ship* ('16), *Welcome to Fear City* ('17), and *The Cake* ('18). Cliff has also had the pleasure of flying people for theatrical productions and commercial events all over the USA since 2014.

Scott Guenther (Lighting Designer) is a Lighting and Media designer based in Dallas, TX. Scott has designed hundreds of shows over the past 25 years. His work has been seen at Dallas-Ft Worth theatre companies like Uptown Players, Theatre Three, Stage West, Contemporary Theatre, and WaterTower to name a few. Scott is the resident Lighting and Media Designer for The Turtle Creek Chorale. Scott started his career with The Dallas Opera and The Santa Fe Opera. He soon moved on to design for dozens of Theatre, Dance and Choral companies while managing the technical needs of the Addison Theatre Centre in Addison, TX for over 22 years. Scott is a graduate of The University of Texas, Arlington. For more information, please visit fullstageproductions.com.

Debra Hale (Voice & Dialect Coach) is an Associate Professor in the BFA Acting program and a Designated Linklater Voice teacher. She has coached many productions at FSU and teaches voice production, acting, dialects, and yoga. Professional credits: Shakespeare and Company, Indiana Repertory, San Diego Repertory, Irish Classical Theatre (NY), and for several seasons, La Jolla Playhouse. She has acted in Louisville, Los Angeles, Tallahassee, and is a member of Actors Equity, Screen Actors Guild, and a founding member of the Kristin Linklater Voice Center in Orkney, Scotland. She has taught voice workshops in Hawaii, England, Scotland, Thailand, Wales, Greece, Hungary, and France.

Michelle Harvey (Scenic Designer) (USA 829, MFA) is the resident scenic design faculty member for The University of Texas at Arlington's Department of Theatre Arts and Maverick Theatre Company for which she regularly designs. Designs at UTA include *A Midsummer Night's Dream*, *Some of These Days*, *Die Fledermaus*, *The Magic Flute*, *A Streetcar Named Desire*, and many more. Last spring, Michelle designed the set for *The Addams Family* here at FSU. Credits outside the university include designs for Theatre Three (*A Little Night Music*, *Memphis*), Dallas Children's Theatre (*Diary of a Worm*, *a Spider*, and *a Fly* – national tour, *Goosebumps*, *The BFG* –national tour), Stage West (*Don't Dress for Dinner*), Uptown Players (*Titanic*, *Soho Cinders*, *Aida*, *Ragtime*, *Sweeney Todd*), Dallas' Turtle Creek Chorale and The Spectacular Senior Follies, among others. Michelle is a member of USITT, and the United Scenic Artists Local 829.

Lance McGee (Music Director) is thrilled to work on another production at the School of Theatre. Past FSU School of Theatre productions include *Rosencrantz and Guildenstern are Dead* (Composer), *Hedda Gabler* (Composer), *On the Town* (Violin), and the School of Theatre Benefit Concerts of *Carousel* (Violin) and *Kiss Me Kate* (Violin/Mandolin). He has been involved with theatre in Tallahassee for over seventeen years both in the pit and on stage. He is also highly active with the music ministry at the Co-Cathedral of St. Thomas More and works as an Office Manager for MusicMasters.



Who's Who

Megan K. Pence (Assistant Director) is a first year MFA Directing candidate from Bourbonnais, IL. Previous credits include *The Clean House*, *The Elephant Man*, *A Christmas Carol*, *Mary's Wedding*, and *The Metal Children* at Commonweal Theatre, *The Art of the Entertainer* at Lanesboro Arts, and *The Last Seder* at Park Square Theatre. She thanks her husband Daniel for his immeasurable support throughout this graduate school adventure.

Jason Paul Tate (Movement Director) is a Visiting Professor of movement and stage combat on loan from his auxiliary life in NYC. A School of Theatre alum, his Tallahassee career post graduation has been chiefly composed of *Romeo and Juliet* in its many forms. Following productions at Southern Shakespeare, the School of Theatre, and FSU Opera, he is thrilled to again stage the play within this play back on the Fallon stage. Other credits include the Met Opera, A.R.T., BAM, Classic Stage, and numerous Shakespeare companies nationwide. He is a proud member of SDC and a Certified Instructor of stage combat with the SAFD.

Information in "Who's Who" is provided by members of this production. Where opinions are expressed, they are those of the players, not necessarily those of the School of Theatre or Florida State University.



2018-2019 SEASON

**Become a Subscriber
and save 15% off of single ticket prices**

AN EVENING of MUSIC & DANCE
Friday, September 7, 2018, 7:30pm & Sunday, September 9, 2018, 2:30pm

THE NUTCRACKER
Saturday, December 8, 2018, 10:30am (*Children's Abbreviated Show*) & 7:30pm
Sunday, December 9, 2018, 2:30pm

BERNSTEIN & GERSHWIN
Saturday, May 11, 2019, 7:30pm &
Sunday, May 12, 2019, 2:30pm

The Tallahassee
BALLET

Get Your Season Tickets at: TallahasseeBallet.org
Or Call 850-224-6917, x 21



SCHOOL OF THEATRE

Patrons Association

AT FLORIDA STATE

EXPLORE THE BENEFITS OF MEMBERSHIP

Not only do Patrons provide over **\$40,000** in support for School of Theatre students, they also **get more** out of their theatre experience. . .

MEMBERSHIP BENEFITS BY LEVEL	ANGEL \$1,000 +	DIRECTOR \$500-\$999	BENEFACTOR \$250-\$499	FRIEND \$150-\$249
Purchase Season Tickets at 40% Savings	•	•	•	•
Priority Ticket Purchases	•	•	•	•
Free Ticket Exchanges and Waived Ticket Office Fees	•	•	•	•
Name Recognition in All Playbills	•	•	•	•
Access to the Patrons Concierge Line	•	•	•	•
Exclusive Patrons Press E-Newsletter	•	•	•	•
Invitations to Patrons Trips, Receptions, and Special Events	•	•	•	•
Season Sneak Preview w/Reception	•	•	•	•
Complimentary "Bring a Friend" Tickets <small>(pending availability)</small>	(6)	(4)	(2)	
Complimentary Concessions Vouchers	(12)	(6)		
Reserved Seating at The Lab Theatre	•			
Invitation to Special Dinners with Guest Artists	•			



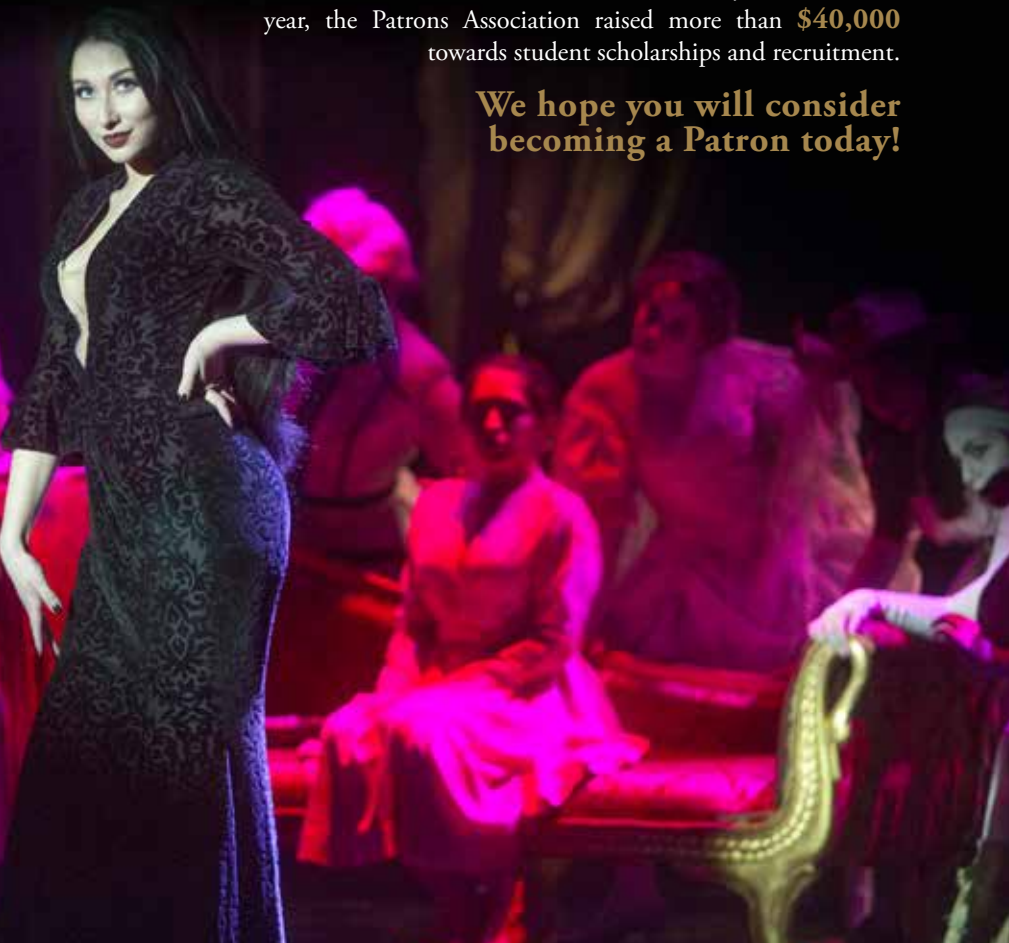
JOIN TODAY!

For more information, contact

Patrons make it possible

The Patrons Association provides support for student scholarships as well as valuable assistance to support performances and programs that enrich the lives of all students and community members. This year, the Patrons Association raised more than **\$40,000** towards student scholarships and recruitment.

We hope you will consider becoming a Patron today!



Amanda Fraser: alf18bi@my.fsu.edu | 850.644.1377

Patrons Association Members

BOARD MEMBERS

Lynn McWilliams, President
Tom Crabb, Vice President
Ellen Berler, Secretary
Jay Newman, Treasurer
Linda Clickner
Robert Clickner
Audrea Coniglio
Rob Contreras
Gary Cook
Howard Eisenman
Barbara Elam
Howard Kessler
Charles LaTour
Annelise Leysieffer
KC McWilliams
Sunny Phillips
Laura Rogers
Carol Weissert
Dennis Williams

EMERITUS

BOARD MEMBERS

Jalma Baker
Richard Henry
Mart Hill
Ted* and Barbara Judd
Lou Kellenberger*
William Moncrief*
Brooks & Almena Pettit
Sara Rodrigue
Dawn Sharp
Nancy Sheridan*
June Strauss*

ANGELS

Frederic Brandt
Sandy Brown,
Magnolia Properties
Judge Steve & Yvonne Brown
Terry & Linda Cole
Rob Contreras & Ellen Berler
Gary & Joanne Cook
Tom, Danielle, & Cassandra
Crabb
Alicia Crew
Jim & Sandy Dafoe
Howard & Susan Eisenman
Barbara & John Elam
Del & Diane Hughes

Cameron & Teresa Jackson
Annelise Leysieffer
KC & Bob McWilliams
Lynn & Todd McWilliams
Russ & Genie Morcom
Jay & Sue Newman
Jim & Betty Ann Rodgers
Brence Sell
Judy & Michael Sheridan
Mike Sheridan
Mr. & Mr. Michael Stephens
William & Carol Weissert
Dennis & Barbara Williams
Carol Woodward

DIRECTORS

Steve Carter & Phyllis Thomson
J. Kent & Flora Caruthers
Robert & Linda Clickner
Gloria Deison
Jennifer Fitzwater & Geof
Mansfield
Tom Foley
Tanya Hollady
Dr. & Mrs. Bruce Janasiewicz
Barbara Judd
Howard & Anne Van Meter
Kessler
Bill & Susan Leseman
Michael & Heather Lister
Brooks & Almena Pettit
Steve Ray
Ms. Laura Rogers
John & Emily Ruddell
Kip & Bev Wells
David & Mary Jean Yon

BENEFACTORS

Susan Barnes & Kenneth Kranz
Wallace Beall
Joe & Patti Beckham
Brad & Robyn Brock
Tony & Sherry Carvalho
Mark Chin-Lenn, MD & Kevin
Pfeiffer
William & Audrea Coniglio
Dr. Paul Deitchman
Michele Diamonti & Michelle
MacVicar
Cathy & Jerry Dufford
Richard Dusenbury

Bryon & Barbara Ehlmann
Dr. Susan Fiorito
Barbara Frederich
L. Kathryn Funchess
Larry Gerber
Barbara Goerke
Patrick & Artis Gray
Joan & Stu Griffith
Steven Hall & Josh Willoughby
Jerry & Bobbi Hill
Mart P. Hill
Jon & Dottie Hinkle
Dr. T. Lynn Hogan & Robin
Fowler
Mr. Warren Husband
Dr. Sally Karioth
John & Linda Kilgore
John & Jennifer LaVia
Fred & Jill Leach
Paul & Sandra Lewis
Barbara & Tony Lombardo
Mary & Clifford Madsen
Mike & Joanne Mallardi
Bill & Laurie McCort
Meredith McKinney
Ms. Fran McLean
Sally McRorie
Alex H. Meng & Yi Zhu
Martin Merzer
Mary Ann & Duncan Moore
Randy & Karen Murrell
Sunny Phillips
Mr. & Mrs. Larry & Joanne
Pintacuda
Lili Quintiliani & Blan Teagle
Lynda Roser & Marilyn Yon
Karen J. Russell
Evelyn Shelley
Gary & Patricia Smith
Ms. Jane Watson
Janice & Jerry Wise
Mark T. & Amelia Zeigler

FRIENDS

Mr. Francisco Alacron
Alan & Nancy Asker
Jeannie B. & Tommy Barrett
Steven & Ellen Bellenot
Dr. & Mrs. Joe Cain
Juan & Jessica Comas
Marti & Bob Cohen

Patrons Association Members

Ann M. Coleman
Jean Coyne
Angie Delvecchio
Bob & Ellie Disbennett
Paul Downing* & Marie Cantwell
Lynn Marie Firehammer
Roy M. Forman & Paula Saunders
Dean Gioia
Ruth Godfrey
Harvey & Judy Goldman
Ms. Elenita Gomez
Mark E. Griffard
William & Maura Heebink
James & Beverley Hovey
Roxanne Hughes, Ph.D.
Linda & Rick Hyson
Bret Ingerman

Charles & Dian LaTour
Donna Legare & Jody Walthall
Cyndy & Walt Loomis
Mrs. Jeralyn Lucking
Ralph & Sue Mancuso
John Mayo
Beauvais McCaddon
Ann & Don Morrow
David & Nancy Norman
Albert & Darlene Oosterhof
Mrs. David Ornstein
Dr. & Mrs. Steven Perfect
Ms. Polly Pickering
J.R. Prescott
Gloria Priest
Dr. Nikki Pritchett
Lance, Beth, & Lindsey Rodan
Martin & Rae Roeder
Herb & Rowe Rogero

Barbara Roufa
Jeanne & William Ryder
Arlene Sandberg
Bob & Gloria Shuman
Carey Smith
Leslie Spencer
Dawn Springs
Robert A. & Martha C. Spivey
Nancy Stepina-Robison
Richard Stevens
Mr. & Mrs. Brea Tato
Dr. Gail Thompkins
M.J. Vossler
Brett Whissel
Dana & Barbara Wilson
Margaret E. Wright-Cleveland
Latika L. Young
Elizabeth Zipse

Patrons Association Members listed as of October 15, 2018.
All (*) following a donor's name indicates the person has passed away.

Patrons Scholar Spotlight: Matt Siperstein



Matt Siperstein is a Sophomore BA Theatre student from Lake Worth, Florida. His recent credits include *Dr. Seuss's The Cat in the Hat* (Boy) and *Tartuffe* (Swing). When not performing, Matt enjoys writing plays and musical theatre. His most recent original work, *Puppy Love*, was produced through Rogue Productions' FLOW 10-Minute Play Festival in the Spring of 2018. You may see him throughout the 2018-19 Season in *A New Brain* (Swing) and *Hairspray* (Swing).

Dr. Seuss's The Cat in the Hat was one of his first experiences as a School of Theatre student. He was nervous to start, but the cast made him feel extremely welcome. He forged some of his strongest friendships during the show and enjoyed the opportunity to work with his fellow students.

He hopes to write for Broadway someday and grow as an artist here at FSU. Matt would like to say, "Thank you so much Patrons Association members. Your support means that I have the ability to continue studying what I love. Between late nights at rehearsal and late nights in a practice room writing music, I wouldn't trade this experience for the world."

2018-2019 Scholarship Recipients

Angela Musette Russo Memorial Scholarship

Cynthia Carmona, Naira Diptee,
Michael Pisani*

Brooks and Almena Pettit/Mart and Louis Hill Presidential Scholarship

Claudia Montague, Tyler Verrier*

Davis Gaines Endowed Scholarship in Music Theatre

Aidan Neal, Lilianna Solum,
Kate Vander Leest

Dean Gil Lazier Student Scholarship in the School of Theatre

Gabriella Juliet, Marina Macherone,
Lannie Rubio, Emma Safon,
Hannah Schreer

Frank and Jo Ann Fain Endowed Scholarship

Gena Heylock, Connor Olney

Ginger Earnest London Theatre Scholarship

Claire McCarthy

Hazel Sliger Presidential Scholarship

Giancarlo Herrera

Howard W. Kessler Endowed Scholarship

Aaron Hagos, Joseph Merendino,
Ramone Nelson*, Faith Northcutt,
Wendy Parkulo, Weston Warren*

Leon and Jane Schmehl Endowed Theatre Scholarship

David Benne*, Jordan Richards*,
Daydra Smith*, Alison Wood*

Maximillian E. and Marion O. Hoffman Scholarship

Anderson Khochaiche*, Paige Pedersen

Richard G. Fallon Scholarship in

Tyler Covington*, Jeanne Schwenck,
Julia Swann

Robert S. Barber Endowed Scholarship

Linnat Berna, Emily Davis*,
Christina Dragan-Dima*,
Stevie Freeborn*, Hannah Spears

Steven L. Sears Scholarship in Theatre

Simon Beckham*, Jena Brooks*,
Nick Clark*, Shannon Haskell,
Tanner Holman*, Emily Onimus

Theatre Patrons Association Scholarship

Amir Bijan Adili, Ada Colli, Lizt Garcia,
Jessica Gray, Amanda Norris*,
Matt Siperstein, Avianna Tato,
Liam Wirsansky*

Theatre Patrons London Endowment

Austin Adams, Bethany Brownrigg,
Claudia Campos, Kara Grozan,
Francesca Martin

Theodore and Barbara Judd Endowed Scholarship in Theatre

Gabrielle Phillips

An (*) following a student's name indicates a scholarship recipient involved in this production.

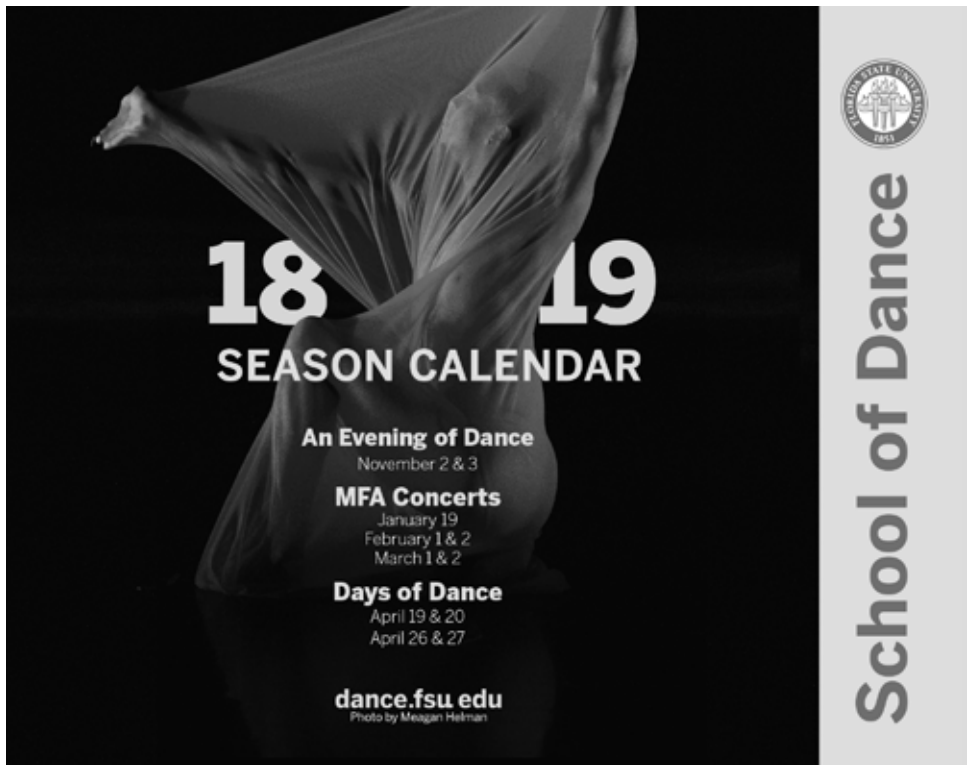
Major Donors to the School of Theatre

Don & June* Alford
Mrs. Erika Anderson
Angela Musette Russo
Foundation
Robert Barber*
Julia Burnett Bryant*
Mary Auger Burns*
Ralph Cook*
Deborah Cooley*
John Degen*
Mary Demetree
Frank & JoAnn Fain
Richard & Sue Fallon*
Frank Flynn
Richard & Kathleen Henry
Maximilian E. & Marion O.
Hoffman Foundation
Davis Gaines

Steve & Blanche Gordon
Dr. Ben Grace
Mr. Foster Harmon
Richard & Betty Higginbotham
Mart Hill
Donald Hinkle
Janet Hinkle
The Hough Family Foundation
Charles & Lillian Huisking
Cameron & Teresa Jackson
Barbara & Ted* Judd
Howard Kessler
Gil Lazier
Magnolia Properties &
Investments, Inc.
Michael & Jean Martin
Mark & Stephanie Medoff
Esther Mertz

Mrs. Charlotte Palmer
Patrons Association
Cathy Peters
Almena & Brooks Pettit
Robb Pruitt
Burt Reynolds*
Jim & Betty Ann Rodgers
Leon & Jane Schmehl*
Steven Sears
Janis Carter Stulman
Fred & June Turner
Wachovia Bank
Steven W. Wallace &
Elizabeth Berkley-Wallace
Mae & Harvey Watt
Foundation

All (*) following a donor's name
indicates the person has passed away.



The poster features a black and white photograph of a dancer in a dynamic pose, with a long, flowing fabric trailing behind her. The background is dark, making the dancer and the text stand out. The text is centered and includes the years '18' and '19' in large font, followed by 'SEASON CALENDAR'. Below this, it lists 'An Evening of Dance' (November 2 & 3), 'MFA Concerts' (January 19, February 1 & 2, March 1 & 2), and 'Days of Dance' (April 19 & 20, April 26 & 27). At the bottom, the website 'dance.fsu.edu' is listed, along with a photo credit to Meagan Helman. On the right side, there is a vertical banner with the FSU seal at the top and the text 'School of Dance' written vertically.


18 19
SEASON CALENDAR

An Evening of Dance
November 2 & 3

MFA Concerts
January 19
February 1 & 2
March 1 & 2

Days of Dance
April 19 & 20
April 26 & 27

dance.fsu.edu
Photo by Meagan Helman


School of Dance

Production Staff

Director.....	Fred Chappell
Assistant Director.....	Megan K. Pence
Music Director.....	Lance McGee
Movement Director.....	Jason Paul Tate
Fight Captain.....	Alison Wood
Scenic Designer.....	Michelle Harvey
Costume Designer.....	Julianne Babel
Assistant Costume Designers.....	Hayley Tara O'Brien, Courtni Riddick
Lighting Designer.....	Scott Guenther
Sound Designer.....	Zach Cramer
Technical Director.....	Cliff Glowacki
Assistant Technical Director.....	Bri Weintraub
Voice and Dialect Coach.....	Debra Hale
Choreographer.....	Kate Watson Gelabert
Dramaturg.....	Merritt Denman
Stage Manager.....	Julia Bodolay
Assistant Stage Managers.....	Kydiana Jeanty, Amanda Norris, Hanna Smaglis
Stage Management Mentor.....	Antonia Collins
Director of Production Services.....	Joshua Wickham
Technical Direction Advisors.....	Robert Coleman, Jim Lile
Production Manager.....	Joshua Wickham
Assistant Production Managers.....	Kassidy Coburn, Erin Collopy, John Abraham Davis
Scene Shop Manager.....	Colin Campbell
Assistant Scene Shop Supervisor.....	John Abraham Davis
Drafters.....	Brock Baird, Kassidy Coburn, Zack Hiatt, Colin Shay, Bri Weintraub
Carpenters.....	Brock Baird, Carson Bishop, Zachary R. Briscoe, Kassidy Coburn, Erin Collopy, Jeff Culleiton, Emily Davis, John Abraham Davis, Alex Farley, Jaxon Golden, Zack Hiatt, Kyle Hoehn, Braeden Ingersol, Jonathan May, Zach Murphy, Ryan Ponsell, Colin Shay, Justin Voga, Bri Weintraub
Paint Shop Manager.....	Jason Strom
Scenic Charge Artist.....	Jason Strom
Scenic Artists.....	Kassidy Coburn, Sabel Contu, Delia Revard, Riley Roberts, Sheila Saintphar, Colin Shay
Properties Manager.....	Kevin Grab
Assistant Properties Manager.....	Allison Daniels
Properties Master.....	Allison Daniels
Properties Shop Foreman.....	Brock Baird
Properties Carpenters.....	Zachary R. Briscoe, Cliff Glowacki
Properties Artisans.....	Emily Davis, Amanda Gerulski, Jordan Johnson, Jill Martell, Ken Moore, Tyree D. Randall, Hanna Smaglis
Costume Design Advisor.....	Colleen Muscha
Costume Technology Advisor.....	Jason Estala
Costume Shop Manager.....	Sarah M. Jahnke
Assistant Costume Shop Manager.....	Caitlin Yost

Production Staff

Wardrobe Supervisor.....	Courtnei Riddick
Drapers.....	Sarah Jahnke, Katharina Koehler, Courtnei Riddick, Jacqueline Rittenbacher, Marc Taylor, Caitlin Yost
Stitchers.....	Julianne Babel, David Jordan Baxter, Celeste Collado, Abbey Dillard, Katharina Koehler, Meredith LaBounty, Ilianna Maestri, Hayley Tara O'Brien, Courtnei Riddick, Jacqueline Rittenbacher, Marc Taylor
Wig Stylists.....	David Jordan Baxter, Jennah Cruz, Jacqueline Rittenbacher
Master Electrician.....	Carrie Barton
Electricians.....	Kassidy Coburn, Christina Dragan-Dima, Stevie Freeborn, Cliff Glowacki, Andy Lile, Ramone Nelson, Renn Oberdick, Ryan Ponsell, Colin Shay, Bri Weintraub
Shop Electricians.....	Skylar Andrews, Christina Dragan-Dima, Stevie Freeborn, Bri Weintraub
Lighting Supervisor.....	Carrie Barton
Light Board Operator.....	Emilia Herrera
Sound Board Operator.....	Alexis McCain
Run Crew.....	Julia Archacki, Leah Blais, Danielle Charbonaeu, Matt Demayo, Brianna Eljaua, Yalimary Gonzalez, Cole Moore, Jordan Richards, Yasmine Andii Sajid, Daydra Smith, Tyler Verrier, Caleb Windstrup
House Manager.....	Amanda Fraser
Director of the Fine Arts Ticket Office.....	Sarah Goodson
Patron Services Managers.....	Jessica Dudley-Rodriguez, Jay Pension
Assistant Patron Services Managers.....	Amanda Fraser, Moletedi One Ntseme, Jennifer Reichert
Usher Crew.....	Ashlyn Anderson, Tyquisha Braynen, Samuel Castellanos, Emily Copeland, Maggie Creasman, Mike Destin, Nicole George, Amanda Gerulski, Elizabeth Guerra, Jessi Martin, Samantha Riou, Jordan Whitley
Fine Arts Ticket Office Staff.....	Spencer Abramson, Haley Brown, Emily Davis, Erica Dixon, Melissa Emery, Kevin Fitzpatrick, Genesis Gates, Gabriela Iglesias, Cole Jones, Gabby Lawlor, Michael Pisani, Aisling Ryan, Alex Turner, Elaina Zwiener
Associate Director of Marketing.....	Naomi Longshore
Marketing Communications Manager.....	Jawaan Smith
Marketing Assistants.....	Moletedi One Ntseme, Jennifer Reichert
Community Engagement Manager.....	Katelyn Woods
Patrons Association Coordinator.....	Amanda Fraser
Community Engagement Intern.....	Joshua Dy-Liacco

Who's Who in the School of Theatre

Cameron Jackson.....	Executive Director; School of Theatre
Brad Brock.....	Associate Director; School of Theatre
Chari Arespacochaga.....	Assistant Professor, Performance
Terri Bourus.....	Professor, Performance
Sukanya Chakrabarti.....	Visiting Assistant Professor, Theatre Studies
Fred Chappell.....	Professor, Acting
Robert H. Coleman.....	Associate Professor, Technical Production Director - MFA Technical Production
Antonia Collins.....	Visiting Assistant Professor, Stage Management
Mary Karen Dahl.....	Professor, Theatre Studies Director - MA/Ph.D. Program
Patricia Delorey.....	Teaching Faculty, Voice; FSU/Asolo Conservatory
Jonathan Epstein.....	Teaching Faculty, Acting; FSU/Asolo Conservatory
Jason Estala.....	Visiting Assistant Professor, Costume Technology
Kate Watson Gelabert.....	Associate Professor, Movement Director - BFA Music Theatre
Anthony Gunn.....	Postdoctoral Scholar, Theatre Studies
Debra Hale.....	Associate Professor, Voice
Dale F. Jordan.....	Professor, Scenic Design
Greg Leaming.....	Director; FSU/Asolo Conservatory
Jean McDaniel Lickson.....	Associate Professor, Acting Director - BFA Acting
Jim Lile.....	Assistant Professor, Technical Production
Andrei Malaev-Babel.....	Professor, Acting; FSU/Asolo Conservatory
Colleen Muscha.....	Professor, Costume Design Director - MFA Costume Design
Elizabeth Osborne.....	Associate Professor, Theatre Studies
Thomas Ossowski.....	Associate Professor, Music Theatre
Anthony Rhine.....	Assistant Professor, Theatre Management
Jennifer Riker.....	Teaching Faculty, Performance
Kris Salata.....	Associate Professor, Performance Director - BA Program
Eliza Schwarz.....	Teaching Faculty, Movement; FSU/Asolo Conservatory
Jason Tate.....	Visiting Assistant Professor, Performance
Aaron C. Thomas.....	Assistant Professor, Theatre Studies
Jessica West.....	Associate Professor, Directing Director - MFA Directing
Carrie Barton.....	Lighting Supervisor
Colin Campbell.....	Scenic Studio Manager
Jonathan Courtemanche.....	Office Administrator; FSU/Asolo Conservatory
Zach Cramer.....	Sound Designer
Michele Diamonti.....	Director of Academic and Student Services
Sarah Goodson.....	Director of Fine Arts Ticket Office
Kevin Grab.....	Properties Manager
Sarah Jahnke.....	Costume Shop Manager
Marcia McClellan.....	Staff Services Associate
Christopher McVicker.....	Technical Director; FSU/Asolo Conservatory
Rachel Morris.....	Production Stage Manager; FSU/Asolo Conservatory
Megan Mowery.....	Media Specialist
Debi Schalch.....	Student Services Coordinator; FSU/Asolo Conservatory
Lauren Snyder.....	F & A Operations Manager
Samantha Spiers.....	Academic Advisor
Jason Strom.....	Paint Shop Manager
Barbara Thomas.....	Student Services Assistant Manager
Amber Vann Lee.....	Office Administrator
Joshua Wickham.....	Production Manager
Caitlin Yost.....	Assistant Costume Shop Manager

For Your Information

Welcome to the School of Theatre at Florida State.

Whether you are returning or visiting for the first time, we want you to feel comfortable and be familiar with our facilities and services.

As a courtesy to the actors on stage and other members of the audience, we ask you to silence cellular phones, pagers, and watch alarms during the show.

Recording or photographing any part of this performance is strictly prohibited. Cameras and recording equipment must be checked with the House Manager.

For persons in need of hearing reinforcement, infrared headsets are offered free of charge in the Fallon Theatre. Headsets should be reserved through the Fine Arts Ticket Office. There is no charge for this service; however, a driver's license, major credit card, or \$10 returnable deposit is required.

Patrons in wheelchairs will find handicapped parking available in the parking garages adjacent to the Fallon, Lab, and Studio Theatres. Wheelchair seating is available at all of our theatres and should be requested when ordering tickets. Patrons should seek the House Manager for assistance upon arrival.

Everyone must have a ticket for the event including infants and children in laps. If your child is causing a disturbance, please exit to the lobby. It is not advised that children under our recommended ages listed per show attend School of Theatre productions.

Restrooms are conveniently located in the lobby area.

Smoking is not permitted in any Florida State University building.

Lost and Found articles should be turned in to the House Manager and may be claimed at the Fine Arts Ticket Office, located in the Fine Arts Building.

Gift Certificates may be purchased at the Fine Arts Ticket Office in any dollar amount. Gift certificates are great ideas for birthdays, anniversaries, and other special occasions.

There are a variety of ticket packages and discounts available. Theatre parties with friends and business associates may be organized at substantial discounts for groups of ten or more.

For group sales information, contact the Fine Arts Ticket Office Manager at 850-644-6500.

Hours of operation for the Fine Arts Ticket Office are Tuesday through Saturday, 11:00 AM to 4:00 PM. The Ticket Office will open 60 minutes prior to each performance.

Late arrivals will be seated at the discretion of the House Manager.

Please arrive 15 minutes prior to performance time to guarantee seating.

Patrons arriving 15-20 minutes after the start of the performance will not be seated until intermission.