

www.natureworks.com.au

07 3289 7555





# Megafauna Reconstructions - Birds

BULLOCKORNIS - GENYORNIS NEWTONI



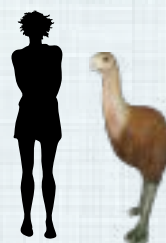
Bullockornis in rainforest diorama



160246  
Genyornis Newtoni  
- Bullockornis  
Extinct Megafauna Bird  
L 159 x W 57 x H 174cm - 25.6kg



Bullockornis survived  
until about 26,000  
years ago



This was a large flightless bird that lived in Australia approximately 2 metres in height they vanished about 25,000 years ago.

It would have weighed about 200kg. It was one of the last of the giant mihirungs (or thunderbirds).

Natureworks produced this megafauna bird in 1992 for the Gondwana Rainforest Sanctuary exhibit in Brisbane Australia.





# Megafauna Reconstructions - Birds

DROMORNIS NEWTONI - ALSO KNOWN AS THE "DEMON DUCK OF DOOM"

THE DEMON DUCK OF DOOM STANDS AT ABOUT  
L 120CM X W 60CM H 200CM





# Megafauna Reconstructions - Birds

DROMORNIS STIRTONI - ALSO KNOWN AS THE "DEMON DUCK OF DOOM"

Natureworks dromornis stirtoni reconstructions shown in workshop



## DROMORNIS STIRTONI IN LIFE

This model represents the best estimation of the life appearance of Dromornis stirtoni. It has been made to the proportions of the largest complete bones available, which we now know belonged to male individuals. Therefore the model specifically represents a male. Note the unusual ornamentations at the front of the beak. These were probably used as sexual display to mates.

This reconstruction is for reference only - This is not a Natureworks reconstruction.

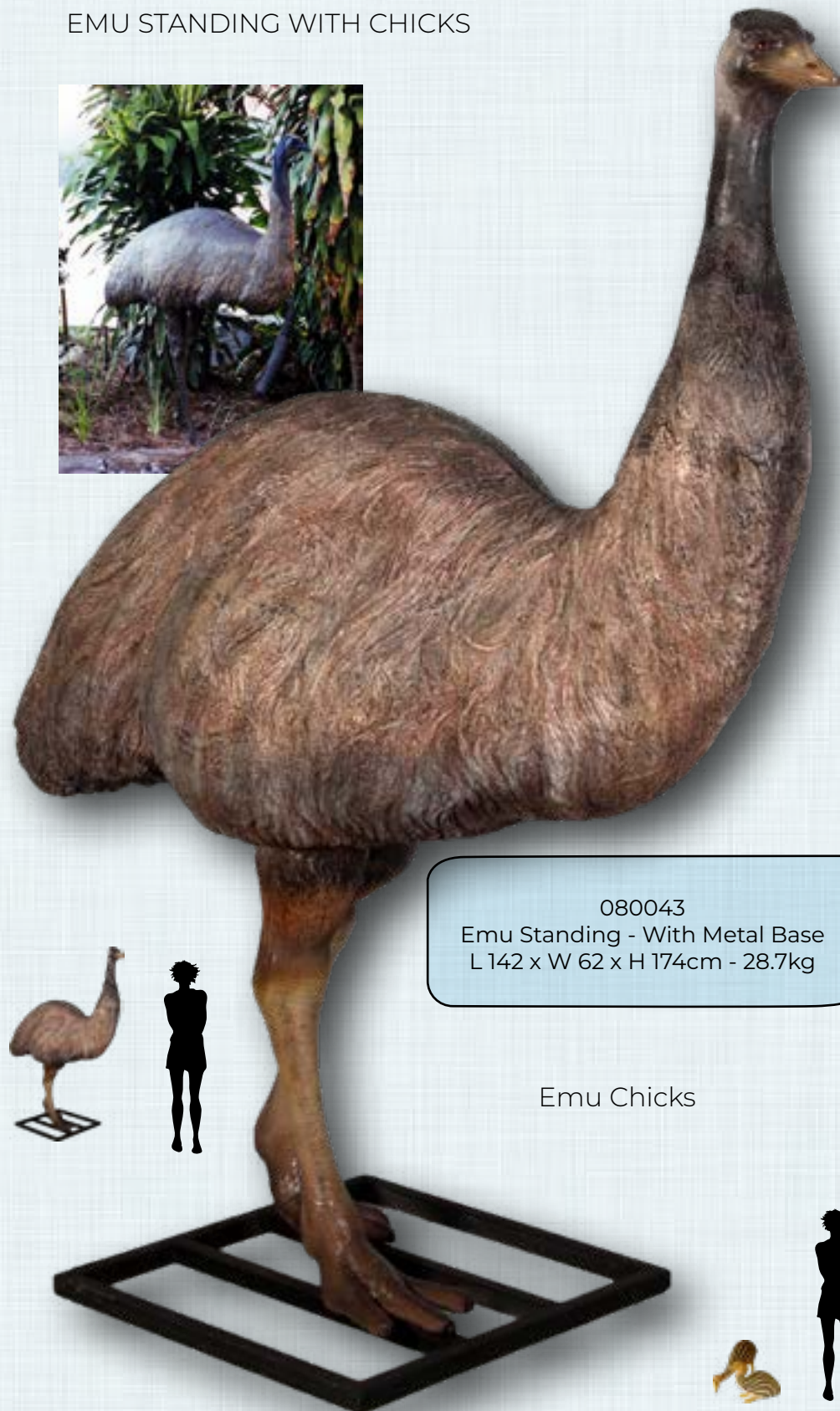




# Megafauna Reconstructions - Birds

GROUND DWELLING BIRDS

EMU STANDING WITH CHICKS



080043  
Emu Standing - With Metal Base  
L 142 x W 62 x H 174cm - 28.7kg

Emu Chicks



EMU SITTING

NW.Emu R  
Emu resting  
L 142 x W 62 x H 120cm - 20kg



080156  
Emu Chicks - set of 2  
L 50 x W 33 x H 19cm - 1.9kg

NW. EmuStanding  
Emu Standing - no base plate  
L 140 x W 64 x H 178cm - 28kg



WITH BLUE NECK  
COLOURING



# Megafauna Reconstructions - Birds

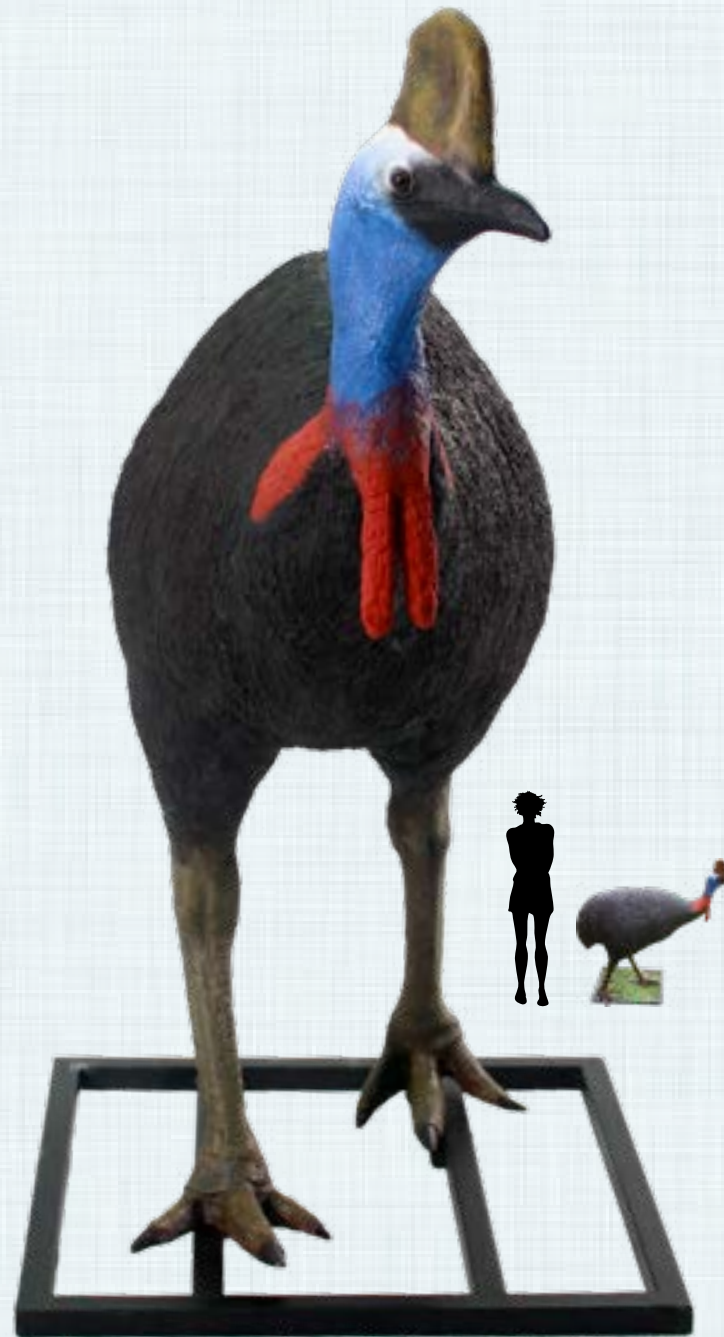
## CASSOWARIES

080154  
Cassowary Female  
L 104 x W 85 x H 182cm - 24kg + Stand



Female cassowary

080156  
Cassowary Chicks - pair  
L 50 x W 33 x H 19cm - 1.9kg



Male cassowary

080155  
Cassowary Male  
L 114 x W 62 x H 119cm - 17 kg + stand



Cassowary family displayed in a museum exhibit with mural art



# Megafauna Reconstructions - Birds

HAAST EAGLE - 3M WING SPAN



## GIANT GOORI GOORI

The Dreamtime Cultural Centre in Rockhampton commissioned the addition of the aboriginal child riding the Gooori Gooori Bird to portray the legend of a giant eagle which carried off an aboriginal child as in Aboriginal Dreamtime folk law



Giant eagles ruled the skies during the Pleistocene era across Australia and New Zealand where the Haast Eagle ruled the roost. These eagles reached a wingspan of over 3 metres.



# Megafauna Reconstructions - Birds

## GIANT SCRUB TURKEY - (PROGURA GALLINSCA)

Did you know - 3 or 4 giant relatives of the modern day scrub turkeys are known of in the fossil records.



### Key points:

Australia was once home to five large megapodes, relatives of the brush turkey

Three of those are new species revealed in fossils from WA and SA.

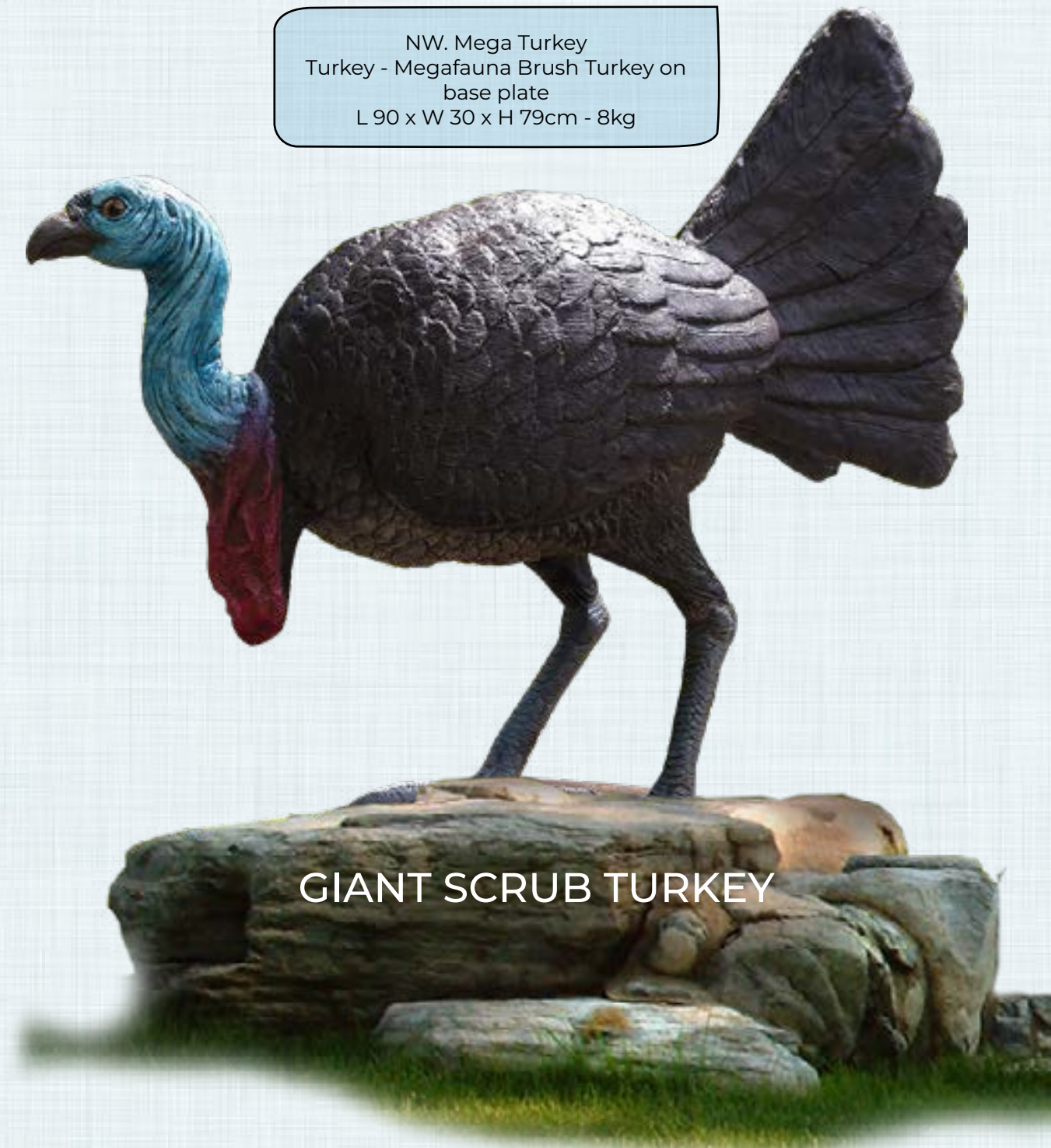
Finding could debunk notion brush turkey descended from large megapode ancestor

Analysis of fossils suggests Australia was once home to five species of now-extinct giant megapodes — chunky, chicken-esque cousins of modern mound-building brush turkeys and mallee fowl.

The largest of these extinct birds weighed 8 kilograms and was about four times the size of today's brush turkey.

This new sculpt coming from Natureworks will be about  
L 700cm x W 600 H 100cm

NW. Mega Turkey  
Turkey - Megafauna Brush Turkey on  
base plate  
L 90 x W 30 x H 79cm - 8kg





# Megafauna Reconstructions - Mammals

Ghost Bats hanging in Caves

GHOST BATS



Hanging Ghost Bat - Coloured Grey



Hanging Ghost Bat - Coloured Grey



Ghost Bat face - close up of real Ghost bat



Ghost Bats hanging - Gondwana Exhibit



Flying Version - Rubber Mould



Flying Version - Rubber Mould underside detail



Flying Version - Rubber Mould



Large Ghost bats are part of the Macroderma family which lived in the caves of ancient Riversleigh and fed on small rodents, frogs and lizards

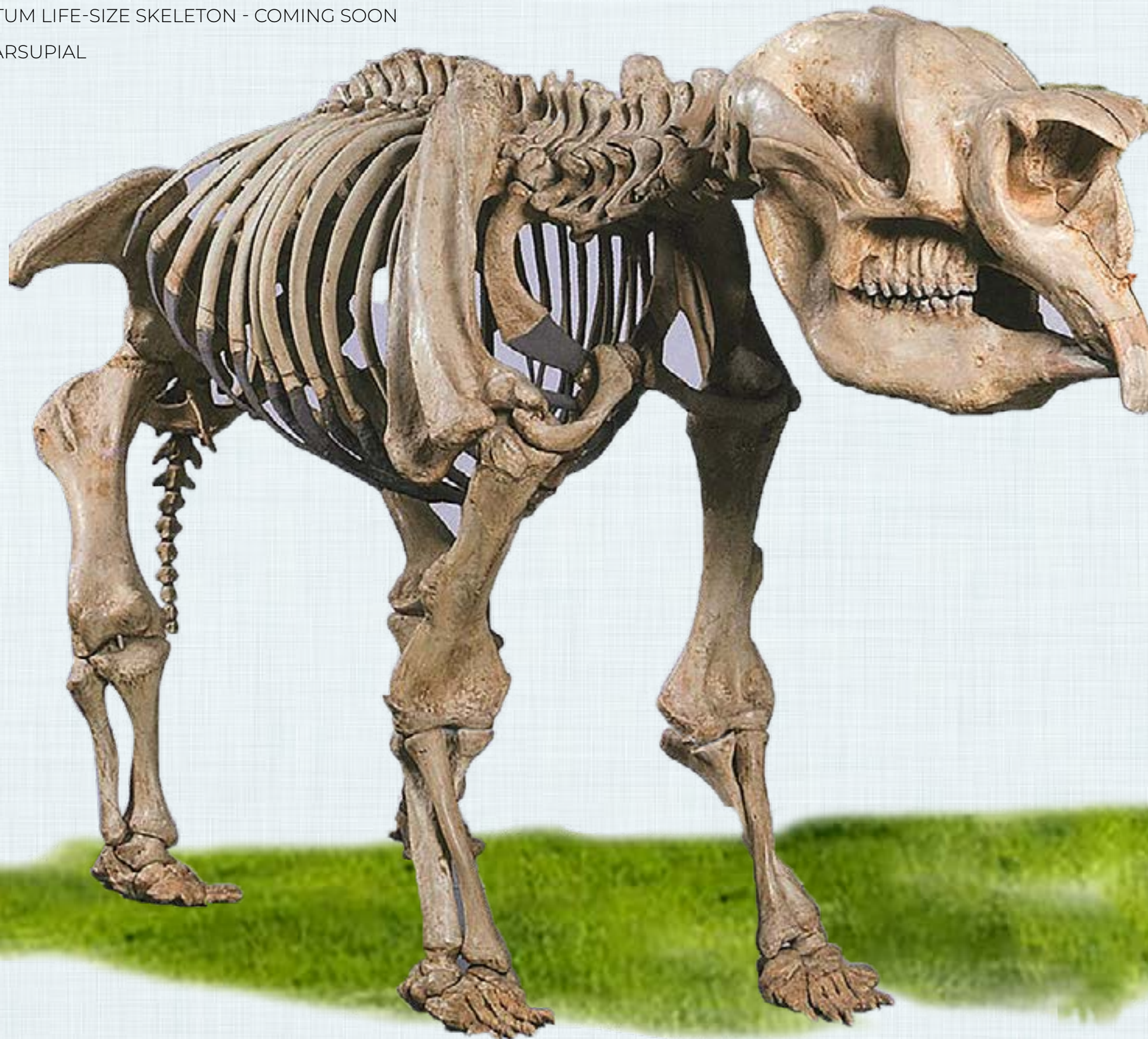




# Megafauna Reconstructions - Mammals

DIPROTODON OPTATUM LIFE-SIZE SKELETON - COMING SOON

GIANT TAPIR LIKE MARSUPIAL





# Megafauna Reconstructions - Mammals

DIPROTODON OPTATUM

GIANT TAPIR LIKE MARSUPIAL

This was the largest marsupial in the megafauna record in the world.

The model is approximately  
L 300cm x W 100cm x H 200cm



Scaled clay  
model



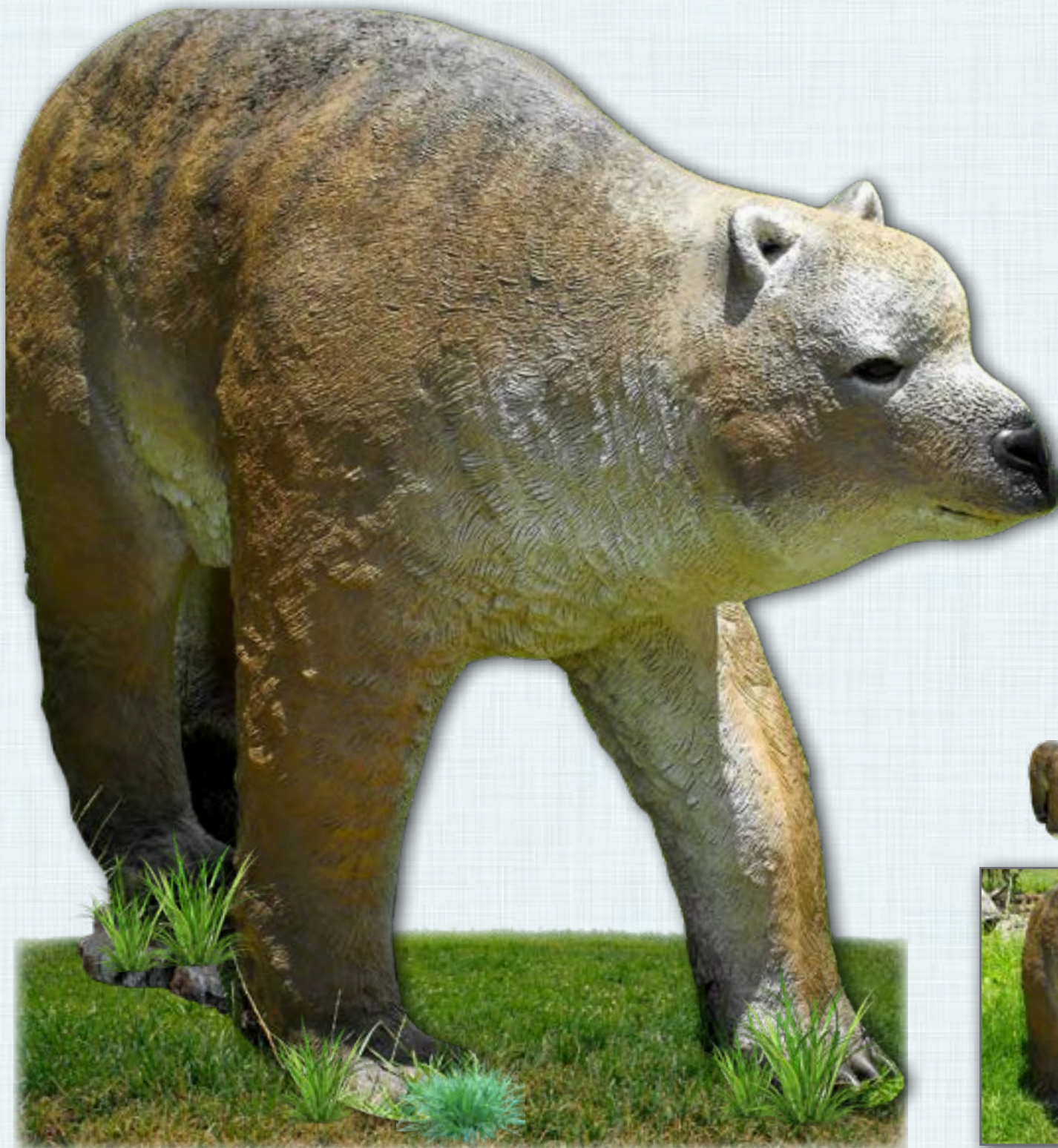
# Megafauna Reconstructions - Mammals

HULOTHERIUM THOMASETTI

THE MOUNTAIN DIPROTODON

EXT-102

Hulotherium or Diprotodon  
L 210 x W 55 x H 130cm - 35kg



Refer to our Fossil Dig  
Section for a larger  
view of Diprotodon  
fossil replica



This was a 300 kilogram  
relative of the much larger  
Diprotodon Optatum found  
over the entire Australian  
continent.

It was bear-like in form and  
was New Guinea's equivalent  
of China's Panda.

Natureworks has also  
recently completed a fossil  
dig of the Hulotherium for  
Port Moresby's Nature park



# Megafauna Reconstructions - Mammals

## LITO KOALA

### LITO KOALA IN GONDWANA EXHIBIT

Lito koala is an ancestral koala which inhabited ancient rainforests about 25 million years ago





# Megafauna Reconstructions - Mammals

MADONNA & CHILD - A SMALL DIPROTODON

These medium sized diprotodons are shown coming to the waters edge to drink. Many such animals stepped out onto limestone encrustations only to fall in and drown. Their fossils remains became cemented to the river bed.

MADONNA & CHILD -GONDWANA  
RAINFOREST EXHIBIT

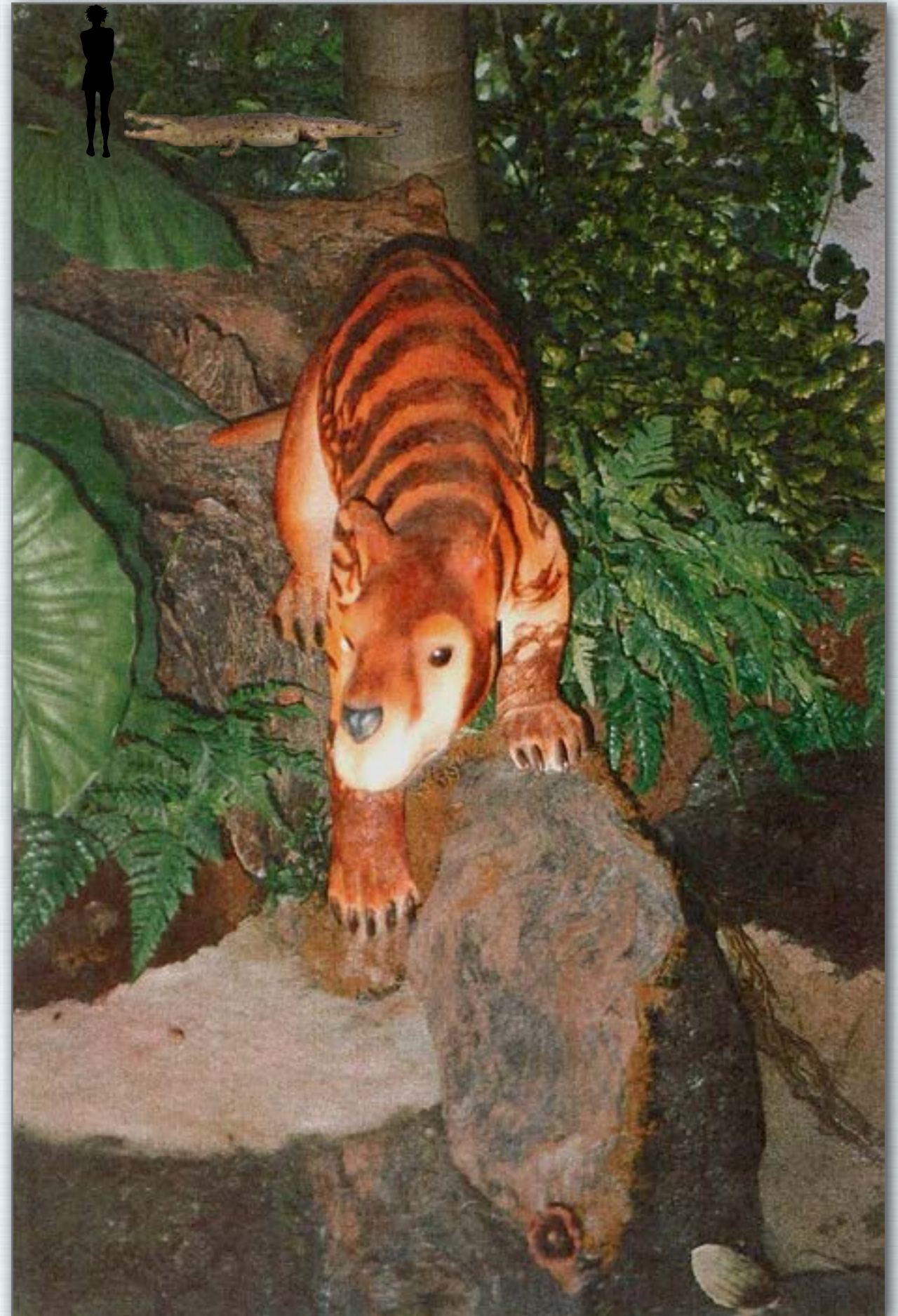




# Megafauna Reconstructions - Mammals

NAMILAMADETA - AN ANCIENT BROWSING MARSUPIAL

Namilamadeta - Displayed in Gondwana Rainforest Sanctuary





# Megafauna Reconstructions - Mammals

OBDURODON DICKSONI

Obdurodon Dickoni  
Riversleigh  
Platypus like animal

Australian Megafauna Platypus  
Crouching

The Obdurodon was first discovered at Riversleigh in 1985. It was slightly larger than the modern day platypus. It was found in The Ringtail Site at Riversleigh.

Riversleigh Illustration



Natureworks Exhibit





# Megafauna Reconstructions - Mammals

OBDURODON THARALKOOLSCHILD  
AN ANCIENT RIVERSLEIGH PLATYPUS

THIS PIECE IS ABOUT  
L 100CM X W 45CM H 55CM





# Megafauna Reconstructions - Mammals

## PROPLEOPUS CHILLAGOENSIS

A CARNIVOROUS KANGAROO FROM THE  
PLIOCENE & PLEISTOCENE PERIODS

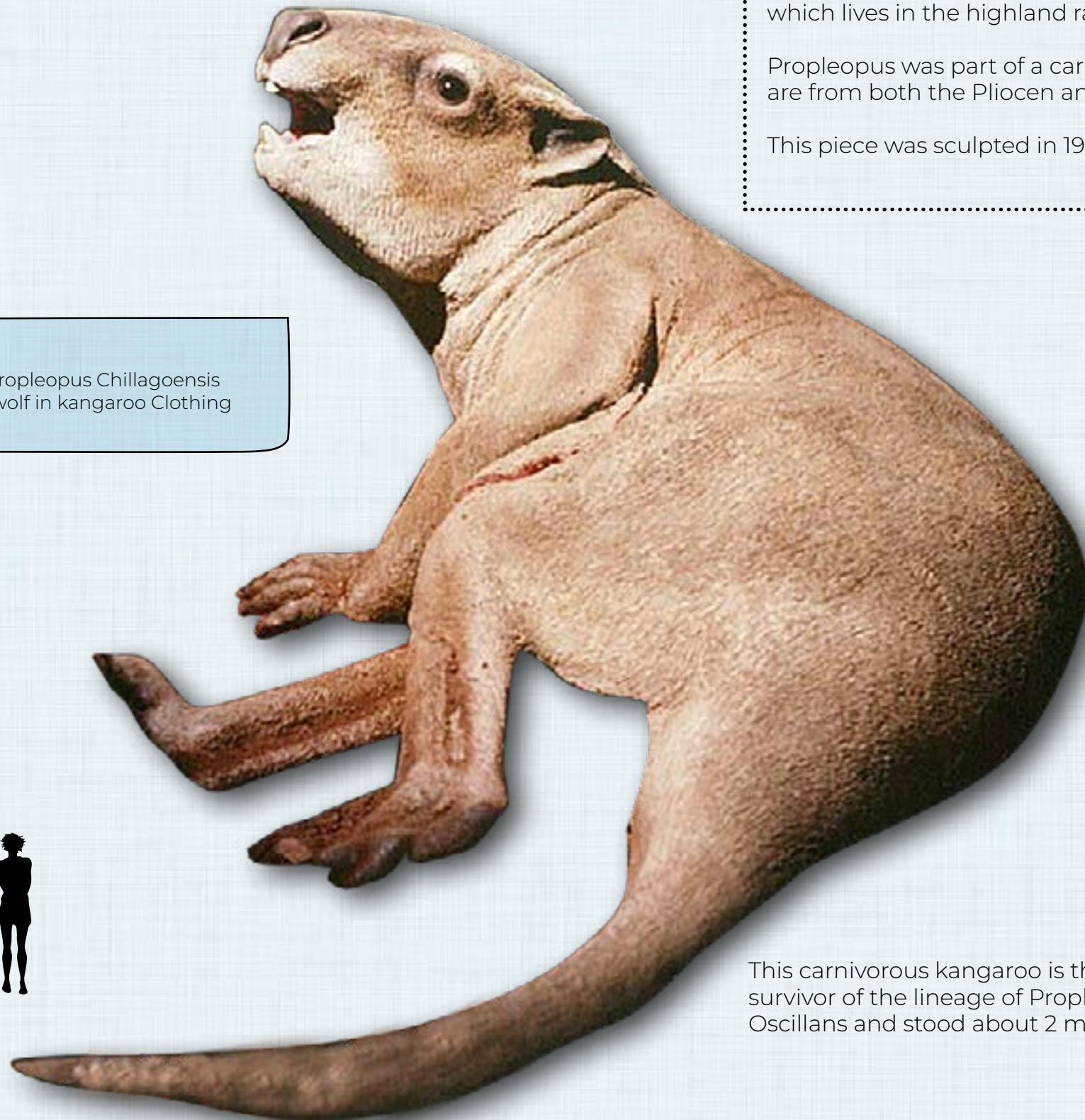
This tertiary mammal is related to the living rat-kangaroos (Potoroidae) which contains many members which are omnivorous.

Propleopus is very closely related to the Musky Rat-Kangaroo - *Hypsiprymaodon Mosehatus*, which lives in the highland rainforest of North Queensland.

Propleopus was part of a carnivorous group of kangaroos called the Propleopine Kangaroos are from both the Pliocene and the Pleistocene

This piece was sculpted in 1995 for the Riversleigh Fossil Interpretive Centre at Mt. Isa.

Propleopus Chillagoensis  
A wolf in kangaroo Clothing



This carnivorous kangaroo is the last survivor of the lineage of Propleopus Oscillans and stood about 2 metres tall.



# Megafauna Reconstructions - Mammals

PALORCHESTES AZAEL-ADULT BUNYIP LIKE MARSUPIAL

Palorchestes azael-adult bunyip like  
marsupial  
L 260cm x W 80cm x H 123cm - 60kg



REFERENCE  
IMAGE

IN PRODUCTION





# Megafauna Reconstructions - Mammals

PROCOPTODON PUSIO  
SNUB NOSED GIANT KANGAROO  
PROCOPTODON PUSIO - FEMALE STANDING  
THIS PIECE IS ABOUT  
L 120CM X W 50CM H 160CM

EXT-104  
Procoptodon  
Short-faced Kangaroo  
L 140 x W 50 x H 150cm - 38kg



A large short-faced kangaroo, one of 4 species of giant Pleistocene kangaroos, the largest of which was Procoptodon goliah which grew to almost 3 metres.

Short-faced kangaroos were common in Australia until about 20,000 years ago. They had a short snout, forward facing eyes and highly mobile arms. Their front limbs had two long fingers and their hind foot had only one toe.

Natureworks are proud to now have this Procoptodon Pusio with joey to add to our collection of extinct megafauna





# Megafauna Reconstructions - Mammals

1.8m

PROCOPTODON GOLIAH - STANDING  
GIANT MALE SHORT NOSED KANGAROO

THIS PROCOPTODON GOLIAH STANDS  
PROUDLY AT 2.8M HIGH

EXT-NWYZ23  
Procoptodon Golia  
Kangaroo  
L 180 x W 60 x H 280cm - 80kg



CLAY MODEL  
SHOWN HERE -  
SIDE VIEW





# Megafauna Reconstructions - Mammals

## PHASCOLONUS GIGAS



It was the largest and most unusual of several large extinct wombats that inhabited Australia during the Pleistocene era

EXT-103  
Phascolonus Wombat  
Large Short Nosed Wombat  
L 130 x W 60 x H 95cm - 30kg



It was the largest and most unusual of several large extinct wombats that inhabited Australia during the Pleistocene era.

It was the largest and most unusual of several large extinct wombats that inhabited Australia during the Pleistocene era.

This wombat was the first megafauna reconstruction by David Joffe in 1981. It was based on the drawing by Peter Schouten in the Australian Museum publication of Prehistoric Animals of Australia. Phascolonus was the largest of extinct wombats from Australia's Pleistocene.

Its feet were not as suited for burrowing as are the modern day wombats, indicating it may have been a grazing animal similar to the Diprotodons.





# Megafauna Reconstructions - Mammals

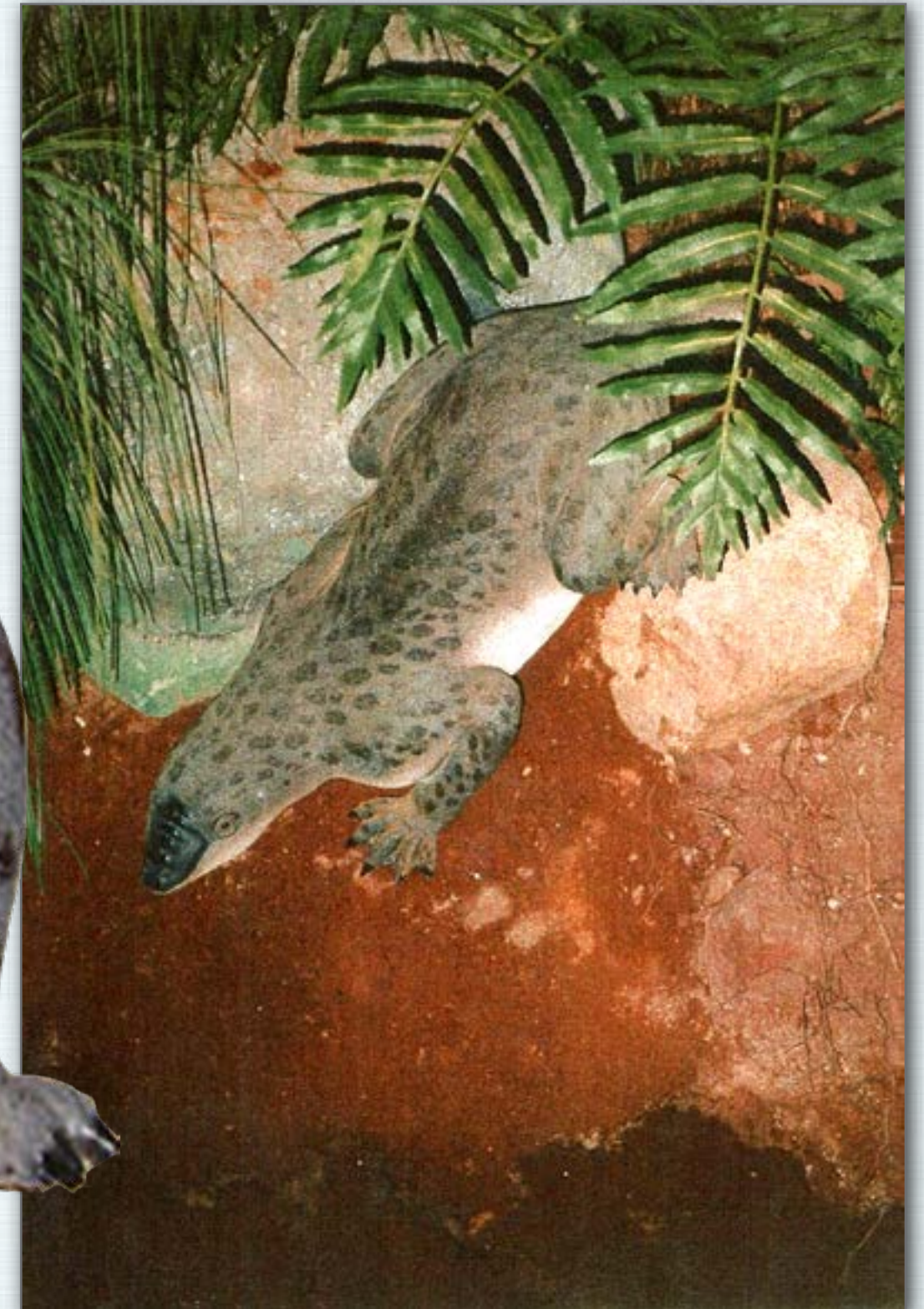
## STEROPODON GALMANI

Prehistoric monotreme - an early relative of modern egg-laying mammals like the platypus and echidna.

this sculpture provides a window into the distant past, showcasing an animal that lived alongside dinosaurs over 100 million years ago during the Cretaceous period. Discovered in opal-rich deposits in Lightning Ridge, New South Wales, this species is known primarily from fossilized jaw fragments containing distinct, platypus-like molar teeth. These teeth suggest Steropodon was likely semi-aquatic, feeding on small invertebrates, fish, and crustaceans..



Steropodon - in diorama exhibit





# Megafauna Reconstructions - Mammals

THYLACINE GIANT - (THYLACINUS CYNOCEPHALUS)

TASMANIAN TIGER - 3 X LARGER  
THAN LIFE

Larger Than Life Thylacine  
(Tasmanian Tiger)  
POA

This 3 x larger than life Tasmanian Tiger or (Thylacinus Cynocephalus) was commission by the Launceston City Council as a playground feature in 2014.

Thylacinus Potens the "powerful thylacine" was a larger and more heavily built ancestor of the modern thylacine, but nowhere near as big as the sculpture below.

In developing this piece, we ensured that it was built to Australian standards and is a heavily steel reinforced

sculpture in fibreglass.

It is now a centre piece for the Launceston Park in Tasmania - This sculpt also provides an education based play experience of the unique megafauna of Tasmania that has only become extinct in the last 50 years.

Natureworks can custom build almost anything, so if you are thinking about a unique sculpture for a playground please give Natureworks a call on 07 3289 7555



Concept Art





# Megafauna Reconstructions - Mammals

THYLACINE - DOG SIZED THYLACINE

Note: The back of this stone plinth is flat to enable wall mounting; this is not a full 3D sculpt

090020WM  
Tasmanian Tiger  
On Rock Plinth - Wall mount  
L 173 x W 47 x H 125cm - 30kg

THYLACINE - WALL MOUNT



Tasmanian Tiger - Free Standing  
Now available

These Thylacines (Tasmanian Tigers) became extinct in Tasmania the 1930's following an extermination campaign waged by sheep farmers.

090020FS  
Tasmanian Tiger  
Free Standing  
L 150 x W 37 x H 125cm - 10kg

THYLACINE  
FREE STANDING

Same stance  
as above but  
without the  
rock





# Megafauna Reconstructions - Mammals

## THYLACINE - TASMANIAN TIGER

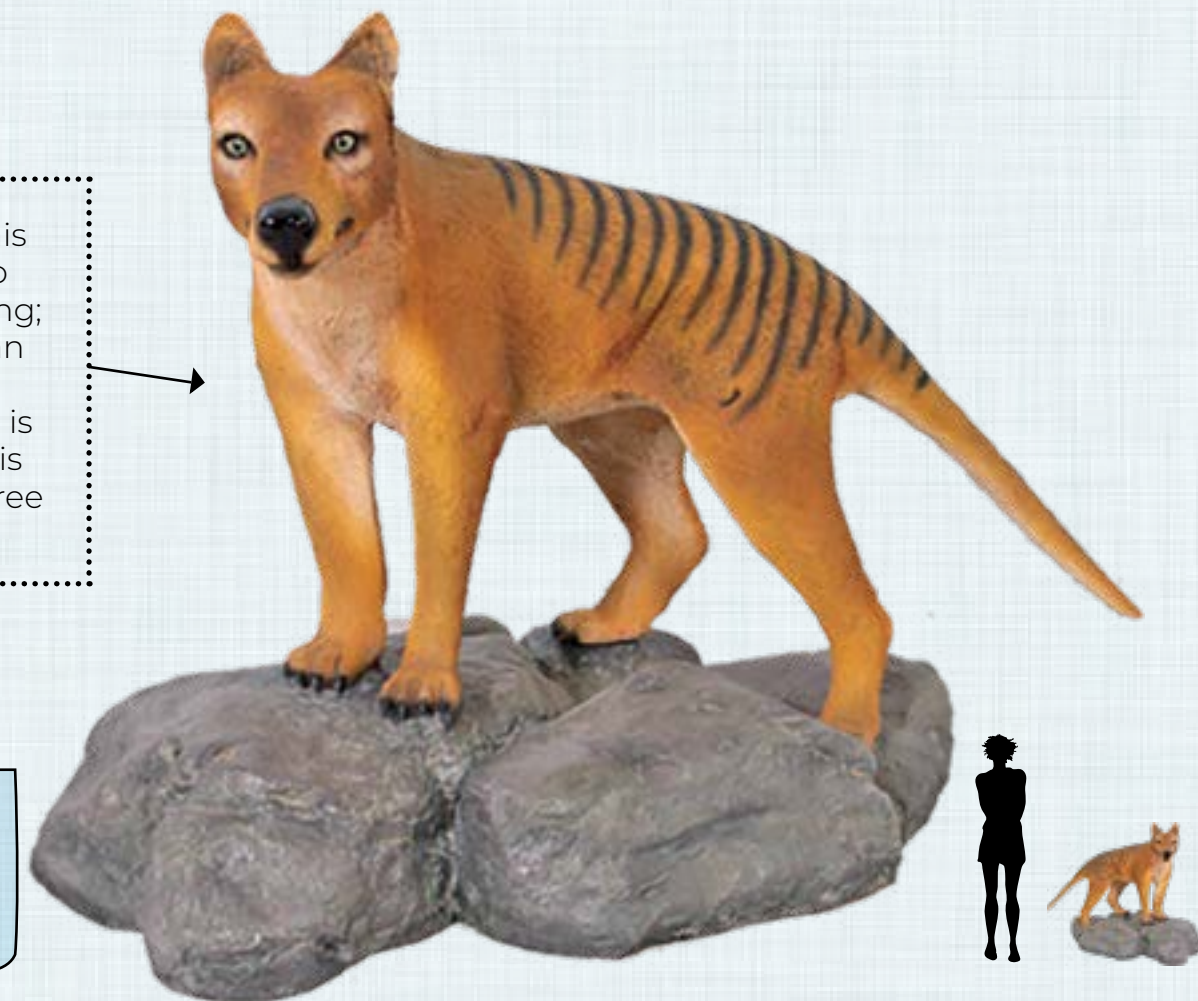
This piece was originally sculpted as part of the Riversleigh Interpretive Centre in Mount Isa Queensland and described by Prof. Michael Archer's team based on fossils recovered from the world heritage site at Riversleigh in North West Queensland

100101FS  
Tasmanian Tiger  
Free Standing  
L 150 x W 30 x H 60cm - 10kg



Note: The back of this stone plinth is flat to enable wall mounting; whilst the Tasmanian Tiger is positioned slightly forward and is a full 3D sculpt and is generally sold as a free standing display

100101  
Tasmanian Tiger on Rock  
L 103 x W 46 x H 70cm - 11.3kg





# Megafauna Reconstructions - Mammals

## THYLACINE - TASMANIAN TIGER

NW Thylacine - MO  
Tasmanian Tiger  
mouth open - new sculpt  
Free standing  
L 173 x W 47 x H 125cm - 31kg

NEW SCULPT- CUSTOM  
DESIGNED



Front View showing  
mouth gaping wide



Angle view - showing detailed paint  
finish and jaw opening



Rear angle view showing  
details and size



In Production -  
Natureworks Studio

In Production -  
Natureworks Studio

In Production -  
Natureworks Studio



THYLACINE - REFERENCE  
PHOTO





# Megafauna Reconstructions - Mammals



THYLACOLEO LEAPING - MARSUPIAL LION - ON ROCK BASE

THYLACOLEO LEAPING ON ROCK  
THIS PIECE IS ABOUT  
L 150CM X W 60CM H 200CM

Thylacoleo Leaping on  
Rock base

Free standing  
L 150 x W 60 x H 200cm - 75kg





# Megafauna Reconstructions - Mammals

THYLACOLEO - LEAPING- ON ROCK BASE

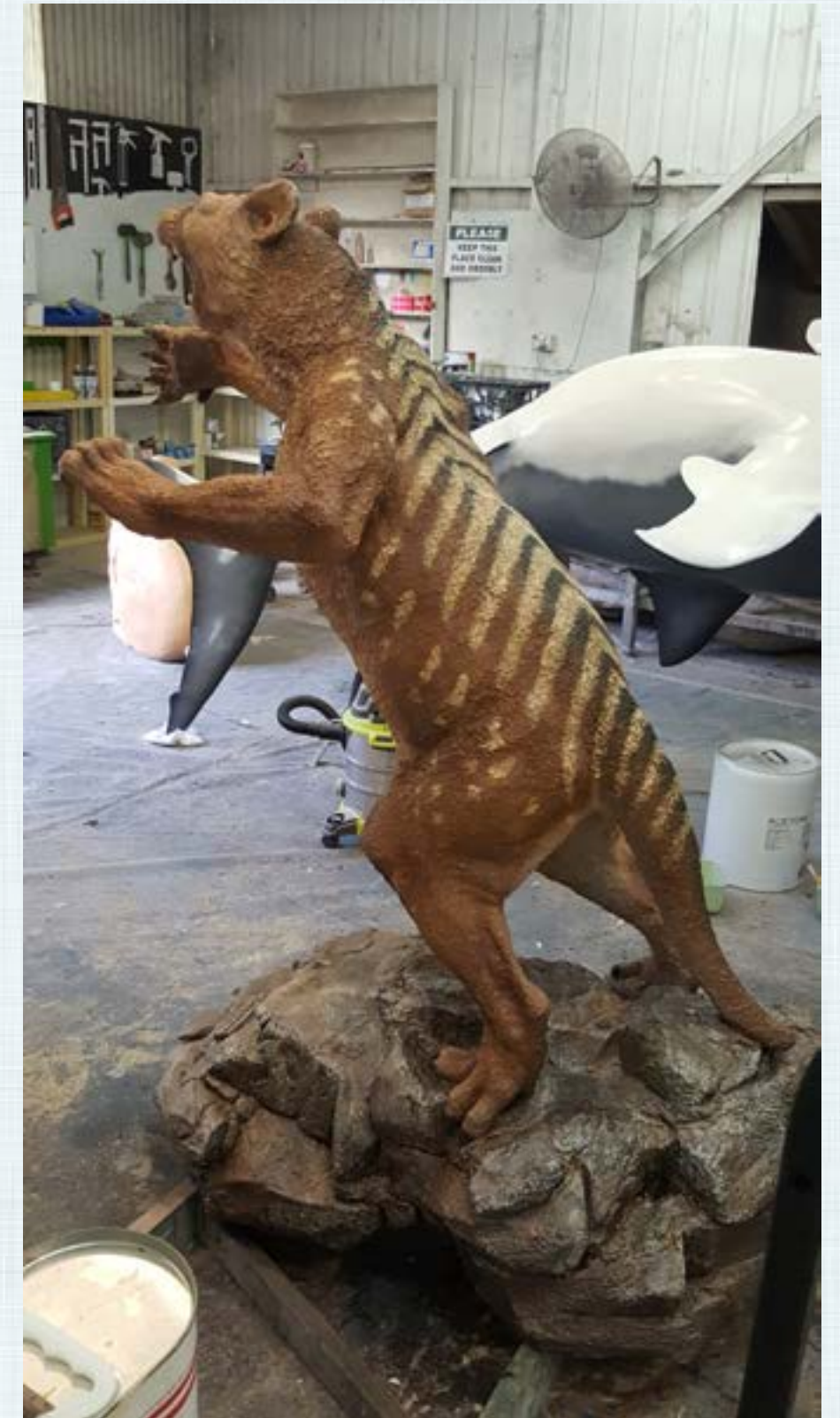


THYLACOLEO - LEAPING OUTSIDE

THYLACOLEO - LEAPING MT ISA INTERPRETIVE CENTRE



THYLACOLEO - LEAPING IN NATUREWORKS WORKSHOP





# Megafauna Reconstructions - Mammals

## TASMANIAN DEVIL

100049

Tasmanian Devil  
L 75 x W 20 x H 31cm - 2.8kg

The Tasmanian Devil is not extinct, but was around during the megafauna period

Although Tasmanian Devils are not extinct, similar sized devils as found today and much larger were prevalent during the Pleistocene





# Megafauna Reconstructions - Mammals

THYLACOLEO CARNIFEX- STANDING -  
MARSUPIAL LION WITH 1 LEG RAISED

EXT-101  
Thylacoleo  
Marsupial Lion  
L 140 x W 70 x H 80cm - 15kg

During the Pleistocene, the large Thylacoleo Carnifex roamed most of Australia except the arid centre.

The large lion-sized sabre toothed tigers were their evolutionary equivalent in the Americas. They had a set of pincer like incisors and enormous flesh cutting teeth.

Thylacoleo was Australia's apex predator. It had a long claw on its thumb and possum-like toes on its hind limbs and would have moved freely through the tree tops, enabling it to pounce on prey from above.





# Megafauna Reconstructions - Mammals

WAKALEO- MARSUPIAL LION REPRODUCTION - CROUCHING POSE

WAKALEO LION ON ROCK BOULDER COMPLETED FOR RIVERSLEIGH FOSSIL DISCOVERY CENTRE ENTRY



Marsupial Lions on Rock Boulder - Concept Art

Side view





# Megafauna Reconstructions - Mammals

## WAKALEO - A LEOPARD - SIZED MARSUPIAL LION

The first remains of Wakaleo were found at Riversleigh in the mouth of a crocodile skull.

This was a leopard sized marsupial lion which may have evolved into the larger lion-sized carnivore of the later Pleistocene.



Gondwana Rainforest Exhibition showing Wakaleo within the rainforest



Building the diorama - Wakaleo within the rainforest

Wakaleo photo reference - side view

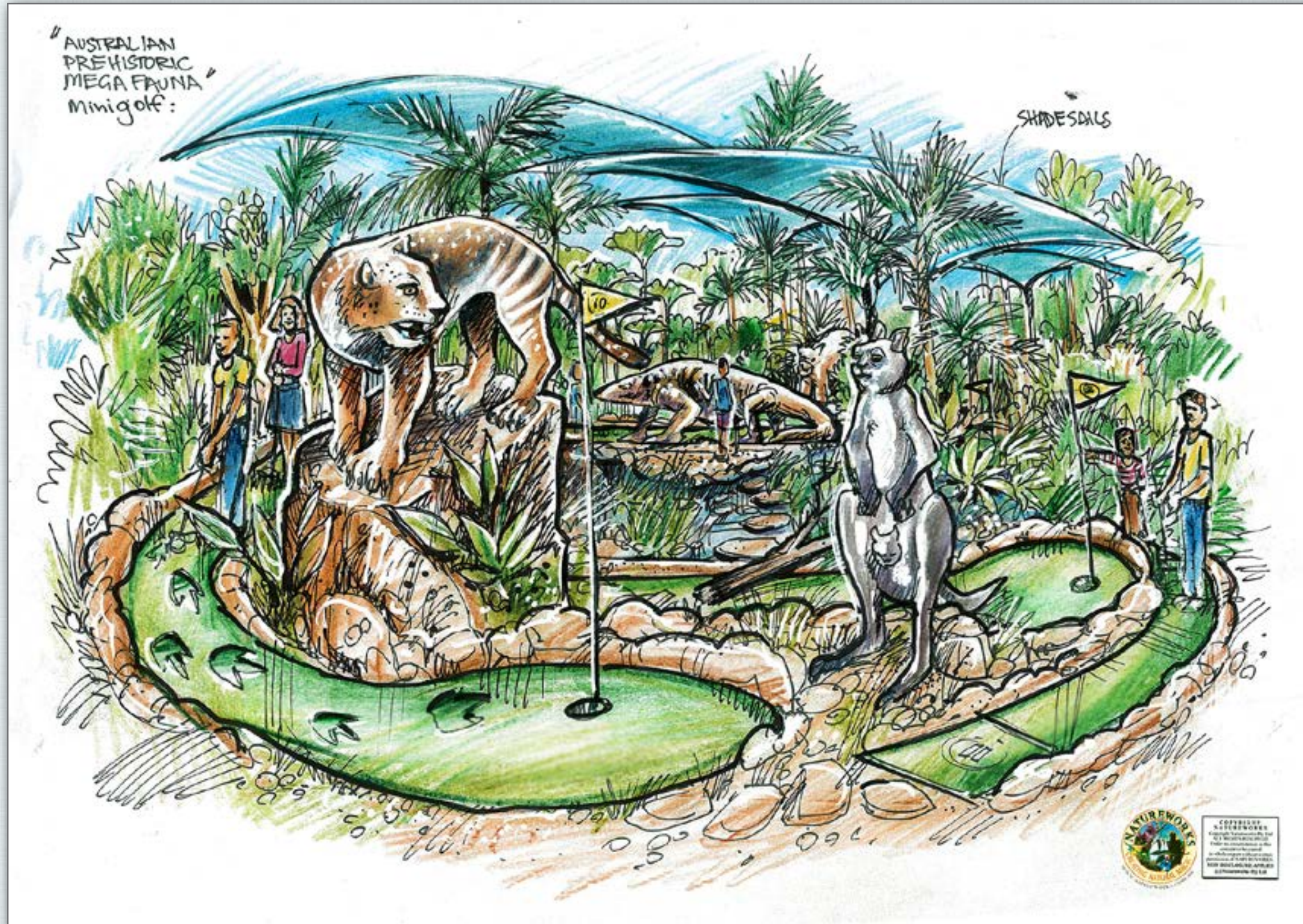




# Megafauna Reconstructions - Mammals

WAKALEO- MARSUPIAL LION REPRODUCTION

MEGAFAUNA MINI-GOLF - CONCEPT ART





# Megafauna Reconstructions - Mammals

ZAGLOSSUS - GIANT ECHIDNA

AUSTRALIAN MONOTREME

Natureworks custom-designed this Zaglossus Hackettithy to be part of the Megafauna exhibit at David Fleay's Wildlife Park - on the Gold Coast.

The national conservation park highlights the need to preserve our wildlife and provides a valuable resource for educating its visitors to help look after our existing unique Fauna. Characteristics.

- This sculpture has been created with the known information of only a few bones that have been found in Western Australia dating back to the Pleistocene.
- 1 metre high
- 600mm long
- Custom designed and painted as a Megafauna Monotreme

ZAGLOSSUS ADULT  
CONCEPT ILLUSTRATION



ZAGLOSSUS ADULT & BABY  
CONCEPT ILLUSTRATION



IN PRODUCTION - UNPAINTED





# Megafauna Reconstructions - Reptiles

KOMODO DRAGON - BROWN -  
3M LONG

The Komodo Dragon has recently been accepted as having been widely distributed throughout the mainland content during the Pleistocene.

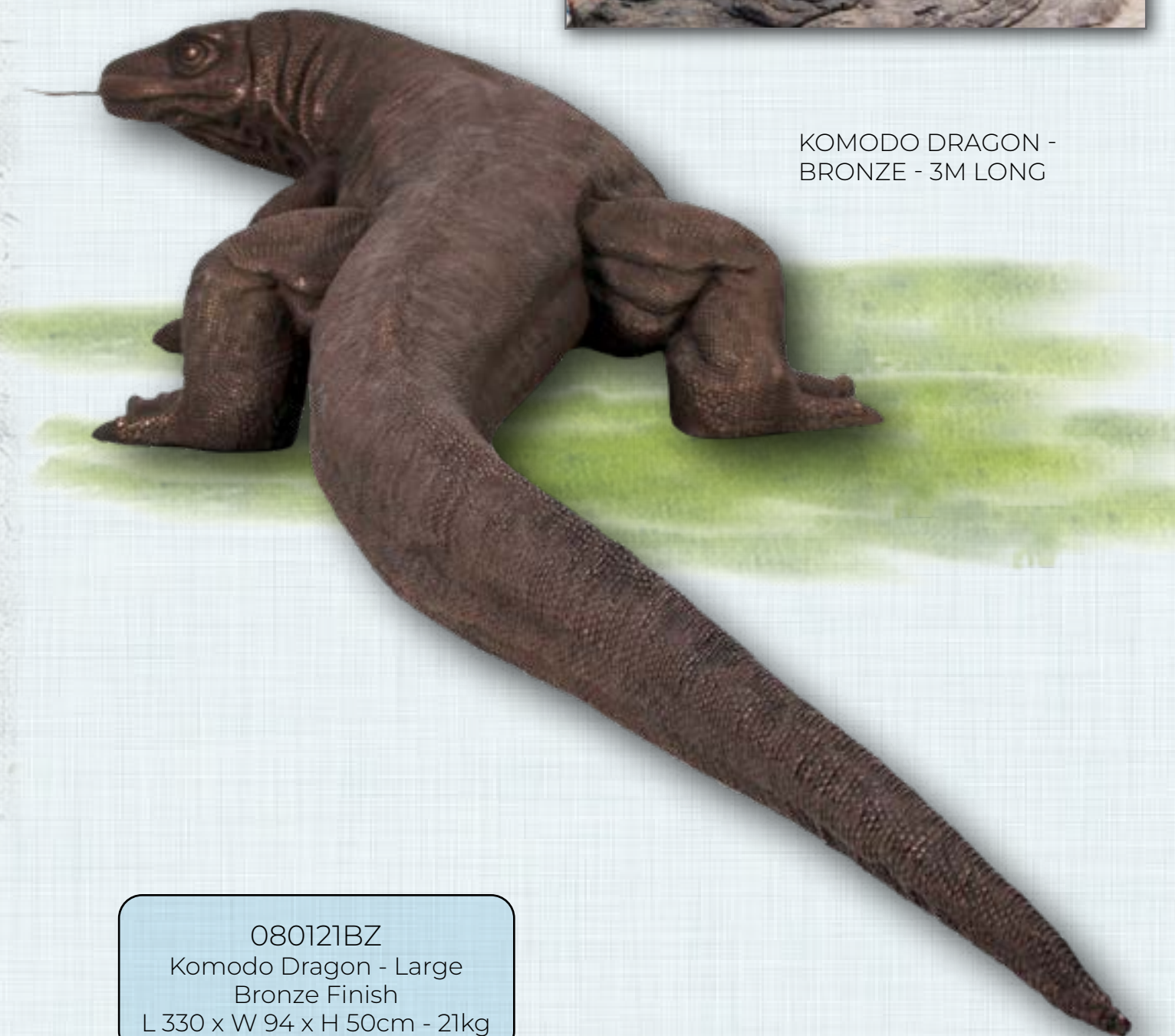
As such it is now considered a relic of the Australian megafauna landscape.



KOMODO DRAGON -  
BRONZE - 3M LONG



080121  
Komodo Dragon - Large  
Natural Finish  
L 330 x W 94 x H 50cm - 21kg



080121BZ  
Komodo Dragon - Large  
Bronze Finish  
L 330 x W 94 x H 50cm - 21kg



# Megafauna Reconstructions - Reptiles

KOMODO DRAGON - PAINTED AS A BELLS  
MONITOR - BLACK & WHITE - 3M LONG

080121BZ  
Komodo Dragon - Large  
Bells Monitor paint finish  
L 330 x W 94 x H 50cm - 21kg



Komodo Dragon - Bells monitor outside at Natureworks





# Megafauna Reconstructions - Reptiles

KOMODO DRAGON - BROWN -  
2M LONG

120001  
Komodo Dragon  
5.5ft - Small  
L 168 x W 55 x H 32cm - 10kg





# Megafauna Reconstructions - Reptiles

KOMODO DRAGON - BROWN -  
2M LONG

KOMODO DRAGON WITH CURVED  
TAIL - 2 METRES

This piece is about  
L 300CM X W 70CM H 103CM



Komodo Dragon in production at Natureworks sculpture studio





# Megafauna Reconstructions - Reptiles

## GIANT MARSUPIAL CARCASE - KOMODO'S LEFTOVER FEAST

This piece is about  
L 70CM X W 75 CM H 10CM

THIS RECONSTRUCTION  
IS LIGHTWEIGHT EASY TO  
PLACE INTO A DISPLAY.

IT CERTAINLY ADDS TO AN  
AUTHENTIC LANDSCAPE  
SETTING WHERE THERE  
WOULD BE REMAINS OF  
VARIOUS WILD ANIMALS.

THIS IS A VERY  
AUTHENTIC LOOKING  
RECONSTRUCTION.

ALL OF THE DECAYED  
ANIMAL BONES HAVE  
BEEN COLLECTED AND  
RECONSTRUCTED AS THEY  
WOULD HAVE PERISHED IN  
THE WILD.

AVAILABLE AS A SINGLE  
ITEM ON A FLAT BASE  
PLATE

CONSTRUCTED IN A  
DURABLE FIBREGLASS  
MATERIAL WITH ALL THE  
ADDITIONAL TEXTURING  
AND COLOURS - SHOWN  
HERE IN THE PHOTOGRAPH





# Megafauna Reconstructions - Reptiles

KOMODO DRAGON - LARGER THAN LIFE /MEGALANIA

SHOWN IN OUTDOOR ASIAN TEMPLE SETTING LOOKING DOWN TO GREET THE VISITOR ENTERING THE EXHIBIT - 6 METRE TOTAL LENGTH



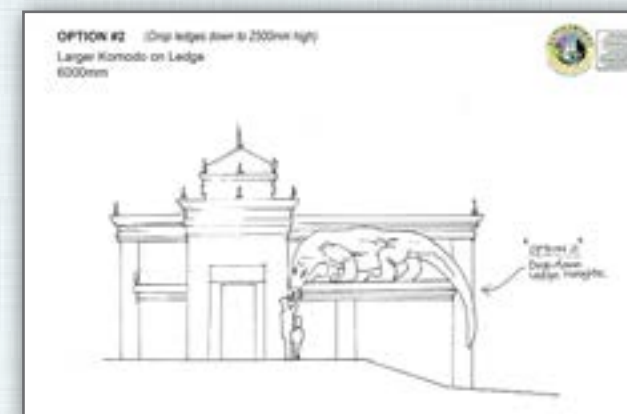
This is a new sculpture of a 6m Long Megalania sized Komodo Dragon painted with a stone-like finish to crown the entrance to the Komodo Dragon Temple at the Australian Reptile Park at Ourimbah in New South Wales.

Natureworks now has sculpted a number of decorative facade elements so as to provide authenticity to this spectacular temple built to provide a display of live Komodo Dragons which appear to have taken over the ruins of the temple

A reproduction of a shredded Asian water buffalo carcass in fibreglass emerging from a dried muddy water hole completes the story.

Natureworks now has 5 different Megalania sculptures in different poses and is planning its own ambush setting of a herd of diprotodons being sized up for an attack at the edge of a water hole.

Custom concept Art





# Megafauna Reconstructions - Reptiles

MEGALANIA - GREEN - 7M

THIS MEDIUM SIZED MEGALANIA WAS ORIGINALLY SCULPTED FOR MT ISA FOSSIL CENTRE



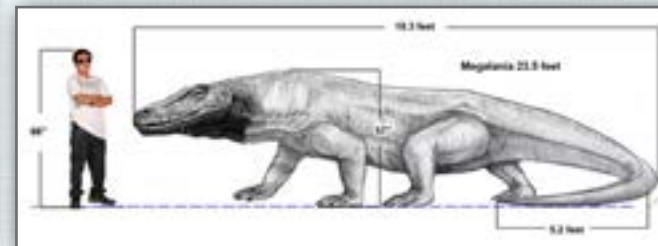


# Megafauna Reconstructions - Reptiles

MEGALANIA - BROWN  
KOMODO DRAGON PAINT FINISH



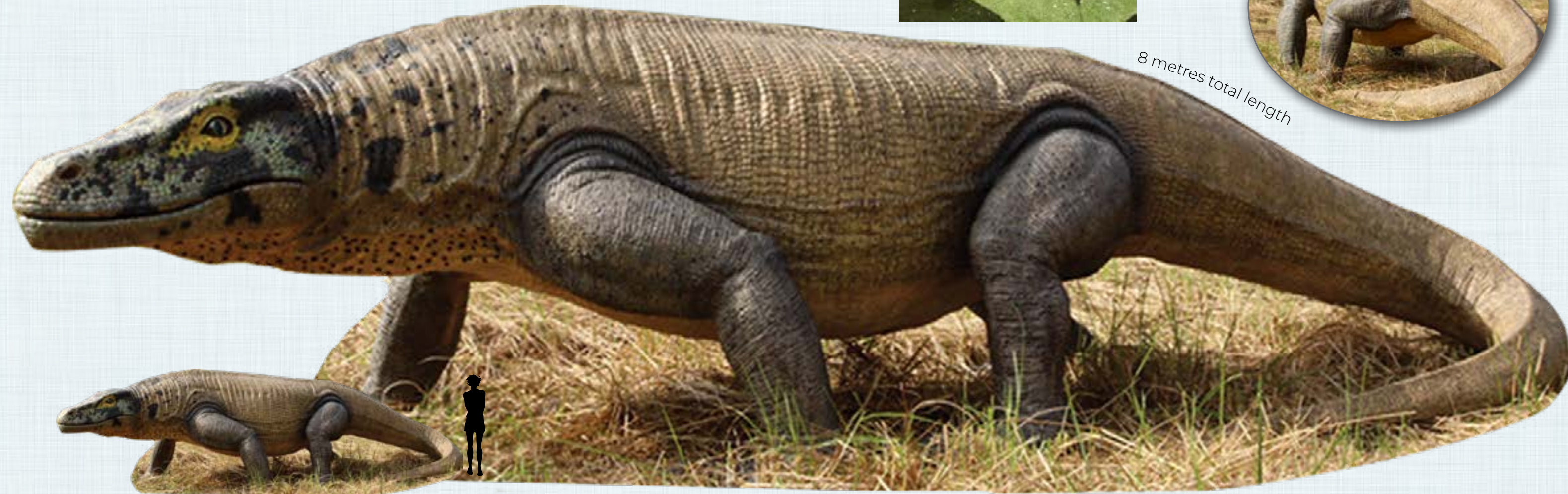
130099  
Megalania  
Brown Version  
L 716 x W 160 x H 168cm - 257kg



This Giant Megalania was a major land predator of the Australian Continent in the Pleistocene era. This piece is a new addition to our megafauna collection. It will provide a great focal point for an education based play experience for children. It has been designed as a playground friendly Australian outdoor/indoor element and will provide a powerful connection between the modern day contemporary fauna and our prehistoric past.

The viewpoint has recently been generally adopted that the modern Komodo Dragon would have occurred also over mainland Australia. Fossils of the Komodo have not yet been found.

It is up to anyone's guess how big the biggest megalania may have been, but the reconstruction by Natureworks at 8 metres in length is not a fantasy but a likely reality.





# Megafauna Reconstructions - Reptiles

MEGALANIA - BLACK & WHITE  
BELLS MONITOR PAINT FINISH



130099  
Megalania  
Bell's Monitor Version  
L 716 x W 160 x H 168cm - 257kg

8 metres total length



Also Available 3  
metre Megalania





# Megafauna Reconstructions - Reptiles

MEIOLANIA OWENI

GIANT HORNED  
TORTOISE

MEIOLANIA - GIANT HORNED TURTLE  
THIS PIECE IS ABOUT  
L 200CM X W 80CM H 85CM

Giant Horned Turtles have been found in Pleistocene deposits, throughout North East Australia on Lord Howe Island and in New Caledonia.

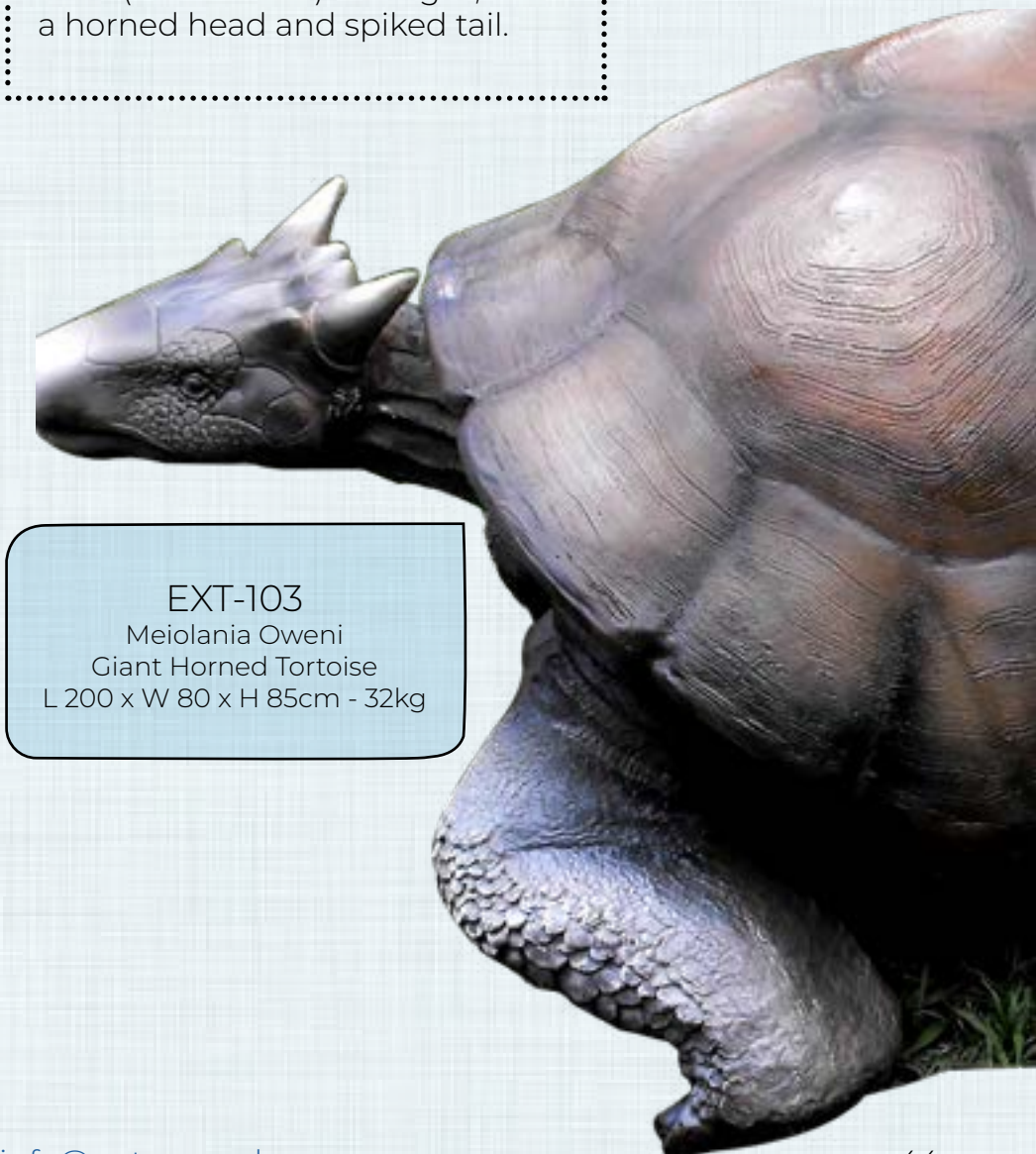
They grew to over 2 metres in length and weighed over 200kgs.

These turtles ate plants and could not have retracted their heads into their shell due to their horns.

Natureworks has recently sculpted this piece to add to our Australian Megafauna Collection.



"Meiolania" was a genus of huge terrestrial turtles measuring up to 2.5m (8ft 4 inches) in length, with a horned head and spiked tail.



EXT-103  
Meiolania Oweni  
Giant Horned Tortoise  
L 200 x W 80 x H 85cm - 32kg



# Megafauna Reconstructions - Reptiles

WONAMBI NARACOORTENSIS - - GIANT PYTHON -HORIZONTAL MOUNT ON BRANCH - 5M

In Production

This 6m plus Matsoiid snake was found in the caves of Southern Australia making it as large as the Anaconda of South America





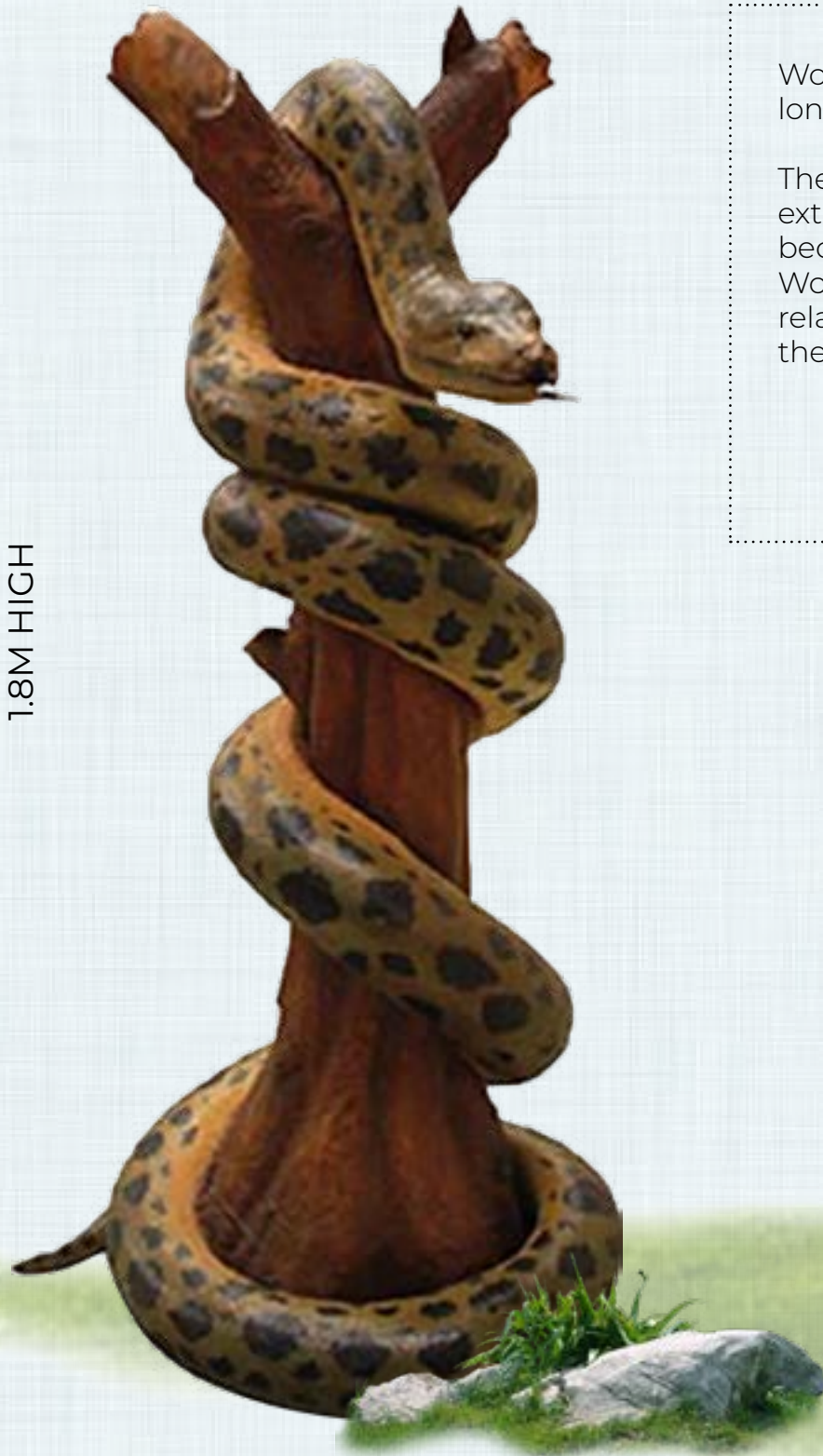
# Megafauna Reconstructions - Reptiles

WONAMBI - ON TREE STUMP

Wonambi means serpent of the Dreamtime. It was up to 9 metres long with a body diameter of about 30cm.

The family of Madtsoiidae of which Wonambi is a species became extinct elsewhere in the world about 50 million years ago. It became extinct in Australia approximately 55 million years ago plus. Wonambi is from the Pliocene/Pleistocene eras and its close relative Yurlunggur found at Riversleigh in North Queensland are the two best known of all matsoiid snakes.

1.8M HIGH





# Megafauna Reconstructions - Reptiles

MONTYPYTHONOIDES RIVERSLEIGHENSIS ON CYCAD TRUNK  
6M HIGH

Montypythonoides riversleighensis is a species of fossil python discovered by Michael Archer and described from Oligocene Miocene deposits at Riversleigh in North West Queensland. Specimens up to 7m long have been recorded. Many different species of snakes are recorded in these fossil deposits.

In 2005 Natureworks re-created this giant 7 metre python wrapped around a 5 metre tall Lepidozamia hopeii cycad as a spectacular entry-statement to the Wild Island adventure playground at Currumbin Sanctuary tourist attraction.

Currumbin Sanctuary entry display



Ancient Riversleigh  
Python on Cycad





# Megafauna Reconstructions - Reptiles

AMETHYSTINE PYTHON



090021

Python Amethystine  
L 253 x W 63 x H 10cm - 5.6kg



New 4.5m version also available

NOTE:

A 4.5 metre version also available - by special order only.

This larger version is a reproduction of an amethystine python of approximately 8.5m in length.

It is one of the worlds largest snakes. It is a slender python for its size and is not able to prey on the large animals that its relative the anaconda of South America can.



# Megafauna Reconstructions - Reptiles

MONTYPYTHONOIDES RIVERSLEIGHENSIS  
GIANT PYTHONS OF THE PLEISTOCENE - 11M

Just how big did Wonambi or Montypythonoides actually grow to? Only a very small number of fossils of prehistoric pythons have been found in Australia. As there were millions of pythons that occurred in prehistoric

times, it is easily conceivable that some of them would have reached proportions far greater than the estimates of size suggested by the size of the few snake fossils so far discovered.

In Production - 1

WHAT COLOUR  
& DESIGN  
WOULD YOU  
LIKE?

THESE GIANT SNAKES CAN BE  
ADAPTED TO SUIT VARIOUS  
SPECIES

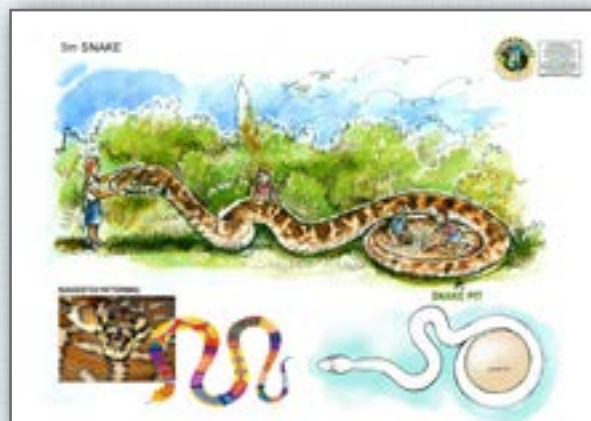
Total Length 11m

In Production -  
2 - Scale detail  
completed

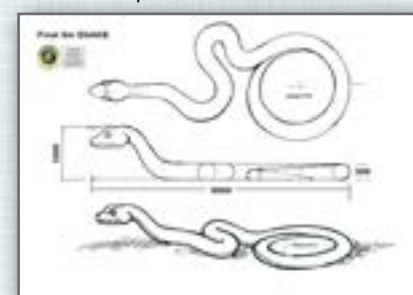
Giant Python - Sandpit & Climber  
- This spectacular sculpture can be painted to match the many different colour variations of carpet pythons found throughout Australia & the world

Rainbow Serpent  
With Sandpit and splash pool

Giant Python - Sandpit & Climber



Concept Art





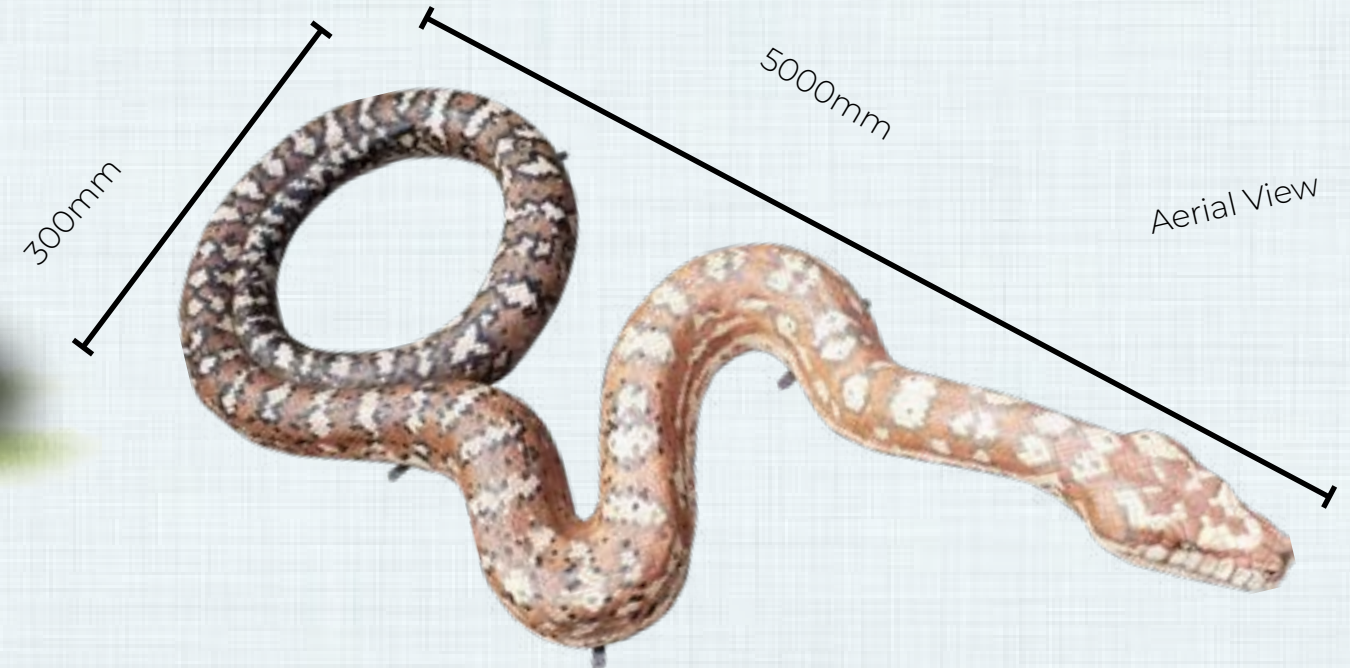
# Megafauna Reconstructions - Reptiles

CENTRALIAN CARPET PYTHON - GIANT

190157Carpet  
Python - Giant Carpet Python  
Coiled - natural  
L 503 x W 300 x H 100 cm - 180.00Kg



Size Comparison



Aerial View



In Production - Scale detail completed



Front View



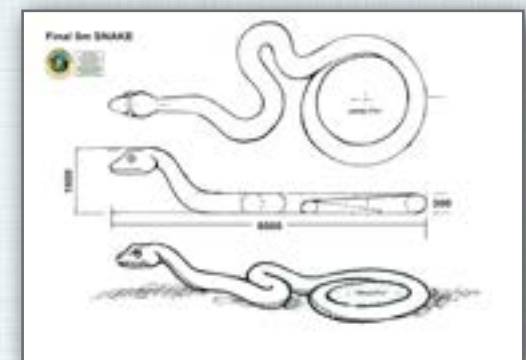
Head View - Showing Scale detail



3 - Rear View



Concept Art





# Megafauna Reconstructions - Reptiles

CENTRALIAN CARPET PYTHON - GIANT

Completed Playgrounds



Delivery



Side View





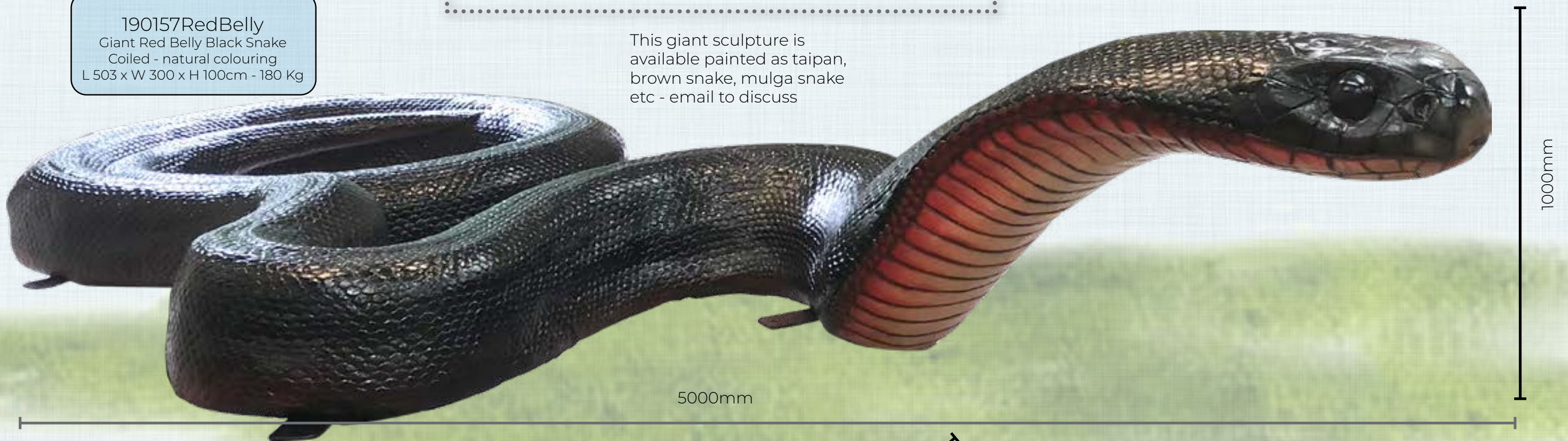
# Megafauna Reconstructions - Reptiles

## RED BELLY BLACK SNAKE - GIANT

190157RedBelly  
Giant Red Belly Black Snake  
Coiled - natural colouring  
L 503 x W 300 x H 100cm - 180 Kg

Size - Length 5000mm x Width 300mm x Height - 1000mm

This giant sculpture is available painted as taipan, brown snake, mulga snake etc - email to discuss



This giant sculpture is available painted as taipan, brown snake, mulga snake etc - email to discuss

Delivery



In Production Scale Paint nearly completed





# Megafauna Reconstructions - Reptiles

CARPET PYTHON- GIANT

Size - Length 5000mm x Width 300mm x Height - 1000mm

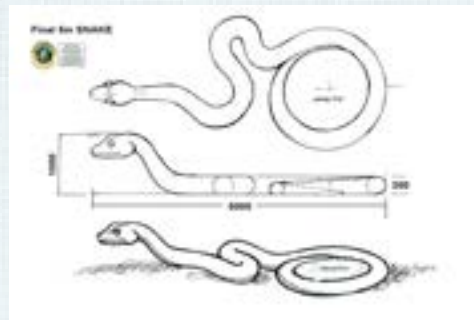
Aerial View

300mm

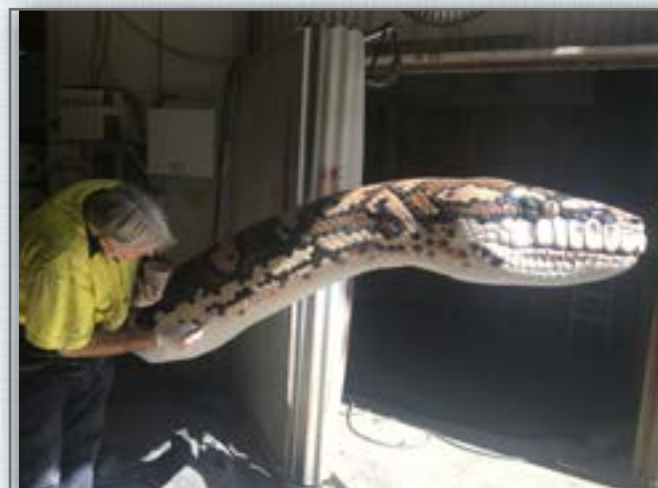
5000mm

1000mm

Concept Art



Delivery



In Production - Scales & Paint nearly completed

Giant Pythons are known from several discoveries throughout Australia in the fossil record. It is not known just how big the biggest of these may have been.

Certainly the Yurlunggur genus, found at Riversleigh in Queensland and also in the Northern Territory grew to at least 9 metres

and 30cm in diameter.

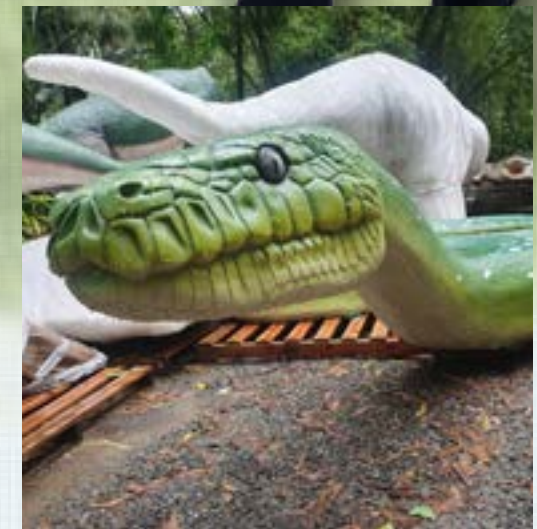
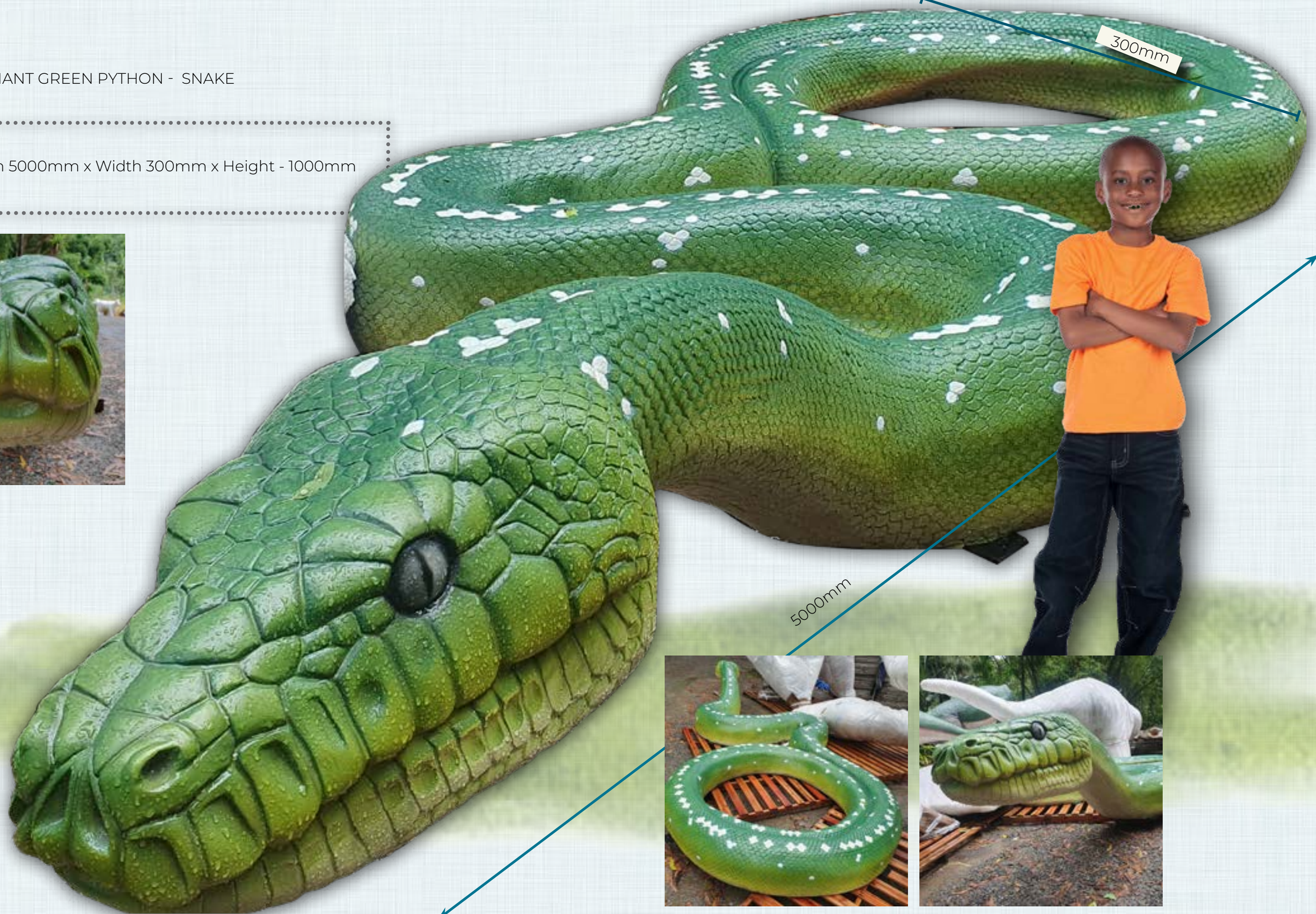
As only a very small number of fossils pythons have been found, It is likely that there would have been many much larger pythons which occurred over the entire continent over many millions of years.



# Megafauna Reconstructions - Reptiles

TITANABOA - GIANT GREEN PYTHON - SNAKE

Size - Length 5000mm x Width 300mm x Height - 1000mm





# Megafauna Reconstructions - Reptiles

## GIANT PYTHON SNAKE - FOR PLAYGROUND - MUNGERIE HOUSE



Snakes body showing detail of scales - - Image 1



Head & Body taking shape - Image 2



First Coat of Paint being applied - Image 3



Second Coat of Paint applied - Image 4

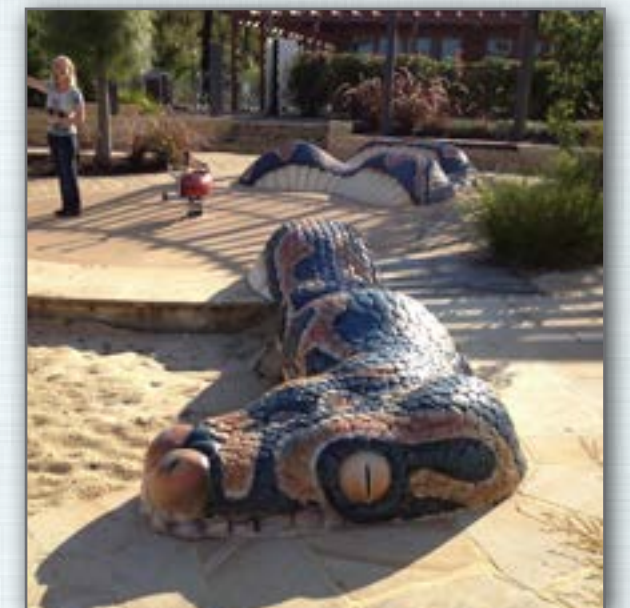


Second Coat of Paint to head - Image 5

Making of the Mungerie House Giant Snake



This giant playground snake is a spectacular playground item. It has detailed scales & paintwork which wraps around the sandpit providing a Fun, safe themed area for all age groups. It also doubles up as seating for adults to use whilst the children play in the sandpit.





# Megafauna Reconstructions - Reptiles

## CROCODILE 28FT - SALTWATER

Saltwater Crocodiles have been recorded up to 28ft in length, how big could they have grown to over the last 10 million years?

### Story behind the 28ft Pawlowski Crocodile

This is a reconstruction of the largest crocodile in Australia, shot by Mrs Krys Pawlowski in 1957 on the banks of the Norman River (Northern Territory). It measured 28ft 4" or 8.63m, a size unheard of in Australia and one that still draws scepticism from some people today.

Natureworks realistic life-size fibreglass crocodile statues add the WOW FACTOR to any garden outlets, mini-golf courses and reptile reserves or movie setting.

Interested in the astonishing full story behind how this enormous crocodile became famous. Published by the Australian news – "Death of Monster"



The largest of Natureworks crocodiles is this 28ft or 8.5 m long saltwater crocodile.





# Megafauna Reconstructions - Reptiles

CROCODILE 18FT - SALTWATER

110090  
Crocodile 18ft Saltwater  
Mouth Open  
L 470 x W 142 x H 38cm - 78kg



12ft Croc - mouth open

28ft Croc - mouth open

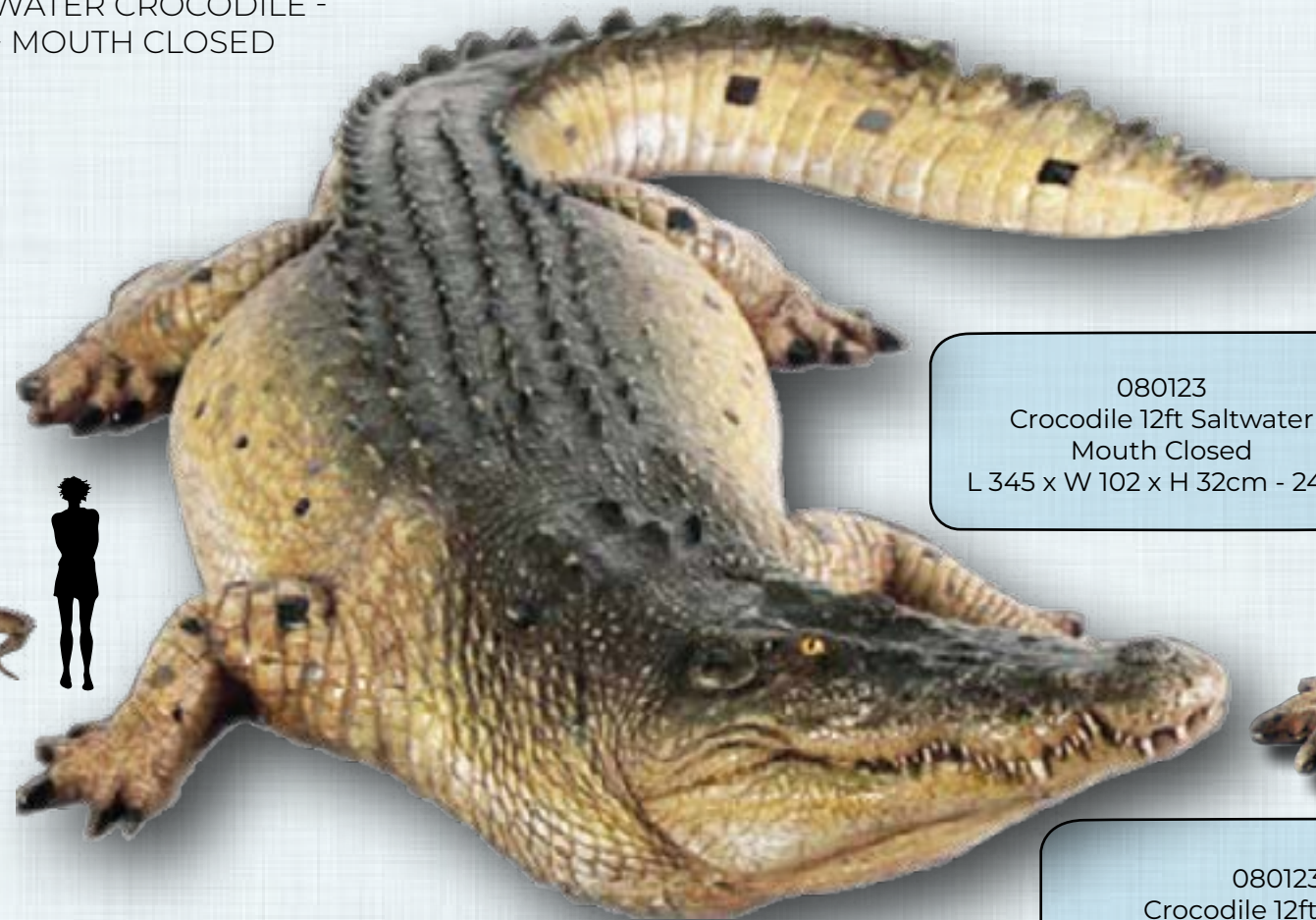


Life Cast from  
18ft Crocodile



# Megafauna Reconstructions - Reptiles

SALTWATER CROCODILE -  
12FT - MOUTH CLOSED



080123  
Crocodile 12ft Saltwater  
Mouth Closed  
L 345 x W 102 x H 32cm - 24kg



ALSO AVAILABLE IN  
BRONZE FINISH

"LIFE CAST"



080123BZ  
Crocodile 12ft Saltwater  
Mouth Closed - BRONZE  
L 345 x W 102 x H 32cm - 24kg

SALTWATER CROC - MOUTH CLOSED - 12FT

SALTWATER CROC - MOUTH OPEN - 12FT



Pallimnarchis was a 5.5 metre long  
crocodile species which lived in  
the Gregory River 20,000 years ago  
during the Pliocene and Pleistocene

PALLIMNARCHIS - 5.5M  
ANCIENT CROCODILE

110091  
Crocodile 12ft - Saltwater  
Mouth Open  
L 343 x W 100 x H 30cm - 24kg



# Megafauna Reconstructions - Reptiles

## QUINKANA MELOLDI CROCODILE - WALKING - MOUTH CLOSED-4FT -

This walking Quinkana melboldi crocodile was found by Willis in 1997 at the White Hunter site in Riversleigh North Western Queensland in a late Oligocene deposit.

The species was named in 1997 for Ulrich Melold a German astronomer.

080112  
QUINKANA MELOLDI Crocodile  
4ft walking  
Mouth Closed  
L 129 x W 28 x H 39.4cm - 2.8kg



Crocodile walking outside

## CROCODILE - RESTING - MOUTH CLOSED-4FT -



Crocodile walking near creek



080111  
Crocodile 4ft walking  
Mouth Closed  
L 129 x W 28 x H 39.4cm - 2.8kg



Note:- This crocodile is resting and lays flat on the ground



# Megafauna Reconstructions - Reptiles

QUINKANA FORTIROSTRUM CROCODILE-  
WALKING - MOUTH CLOSED-680CM

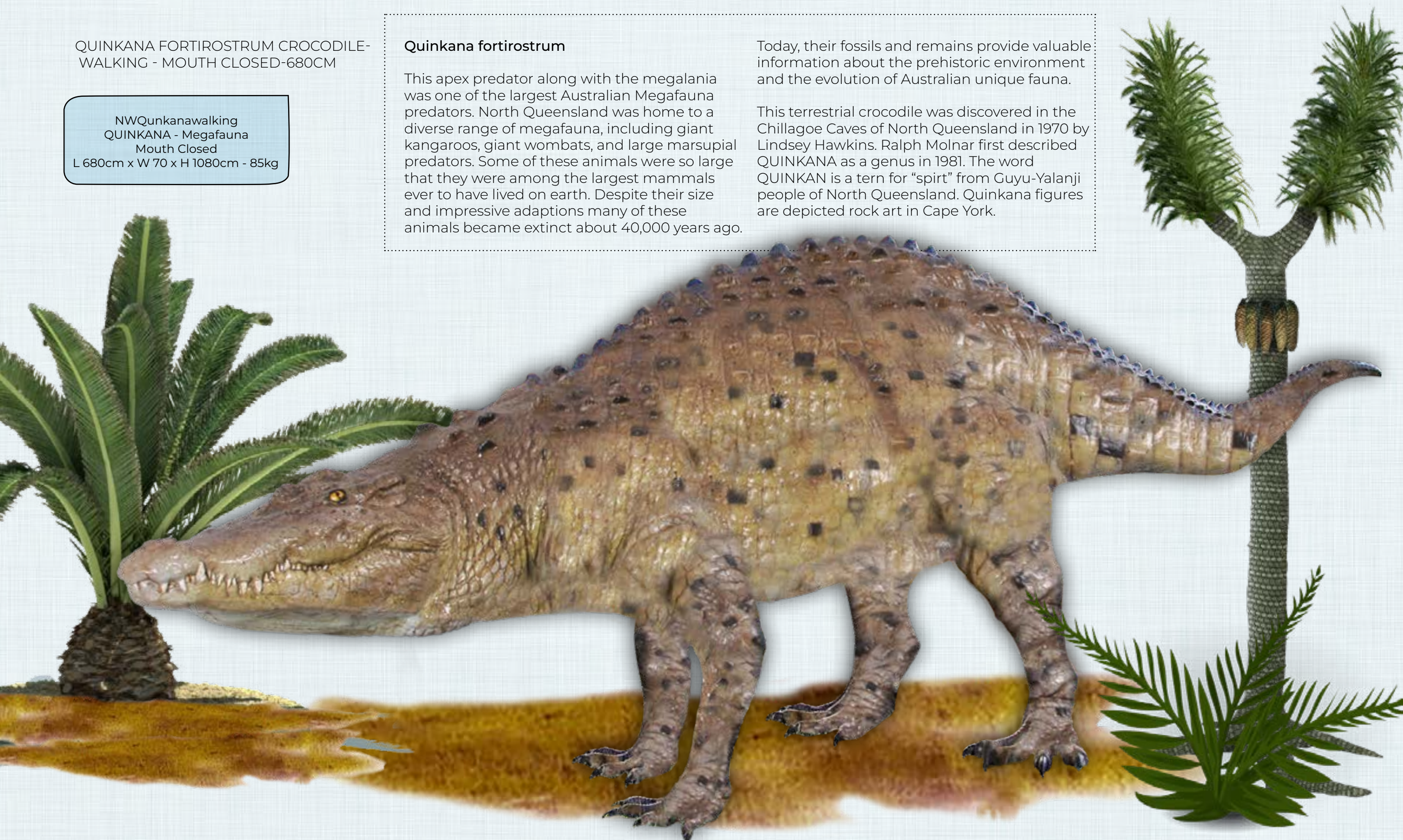
NWQunkanawalking  
QUINKANA - Megafauna  
Mouth Closed  
L 680cm x W 70 x H 1080cm - 85kg

## **Quinkana fortirostrum**

This apex predator along with the megalania was one of the largest Australian Megafauna predators. North Queensland was home to a diverse range of megafauna, including giant kangaroos, giant wombats, and large marsupial predators. Some of these animals were so large that they were among the largest mammals ever to have lived on earth. Despite their size and impressive adaptations many of these animals became extinct about 40,000 years ago.

Today, their fossils and remains provide valuable information about the prehistoric environment and the evolution of Australian unique fauna.

This terrestrial crocodile was discovered in the Chillagoe Caves of North Queensland in 1970 by Lindsey Hawkins. Ralph Molnar first described QUINKANA as a genus in 1981. The word QUINKAN is a tern for "spirit" from Guyu-Yalanji people of North Queensland. Quinkana figures are depicted rock art in Cape York.





# Megafauna Reconstructions - Reptiles

SALTWATER CROCODILE - 11FT -  
MOUTH OPEN - MINI-GOLF PROP



Mini-golf suitable -  
manufactured - extra strong -  
putt through crocodile





# Megafauna Reconstructions - Reptiles

PARACYCLOTOSAURUS DAVIDI  
GIANT LABYRINTHODONT  
AMPHIBIAN

The complete fossil skeleton of this animal was found in St. Peters N.S.W in 1958 and remains on of the most complete amphibian skeletons every discovered.

Measuring at over 2.25 metres it is from the Triassic Era.

It was sculpted as part of a prehistoric diorama for the Gondwana Rainforest Sanctuary in Brisbane.



Paracyclotosaurus davidi  
A Giant Labyrinthodont Amphibian



PARACYCLOTOSAURUS DAVIDI  
Giant Labyrinthodont Amphibian



Labyrinthodont Amphibian  
Illustration Reference



The complete fossil skeleton of this animal was found in St.Peters N.S.W in 1958 and remains on of the most complete amphibian skeletons every discovered.  
Measuring at over 2.25 metres it is from the Triassic Era.  
It was sculpted as part of a prehistoric diorama for the Gondwana Rainforest Sanctuary in Brisbane.





# Megafauna Reconstructions - Reptiles

FLAMINGO STANDING  
FLAMINGOS WERE PART OF  
THE PLEISTOCENE LANDSCAPE  
IN ANCIENT AUSTRALIA .

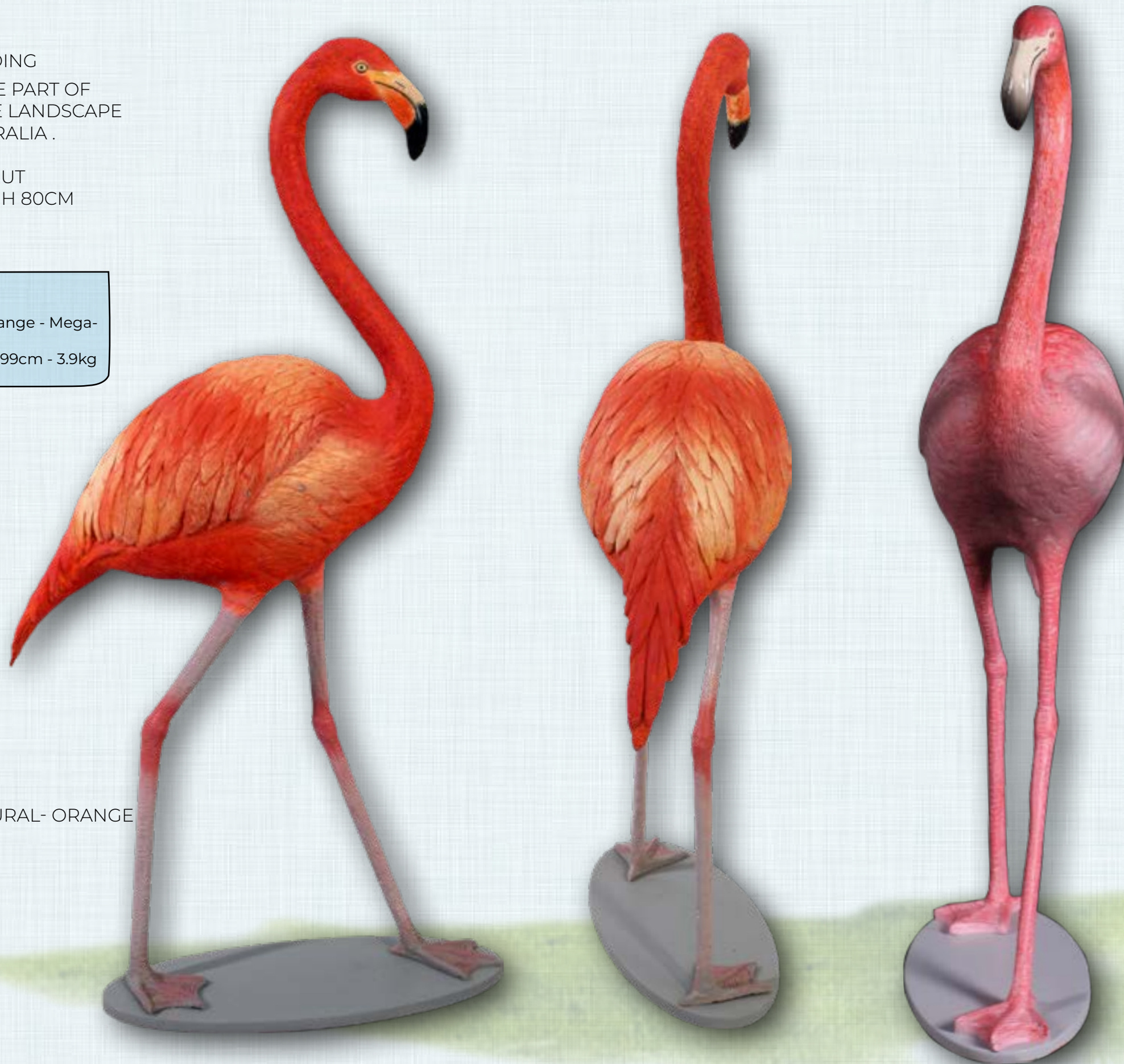
THIS PIECE IS ABOUT  
L 60CM X W 25CM H 80CM

110038  
Flamingo on base - orange - Mega-  
fauna  
L 52cm x W 23cm x H 99cm - 3.9kg

FLAMINGOS - PINK

110038Pink  
Flamingo on base - Pink Megafauna  
L 52cm x W 23cm x H 99cm - 3.9kg

FLAMINGOS - NATURAL- ORANGE





# Megafauna Reconstructions - Fossil Digs

## AUSTRALIAN TERTIARY MAMMAL FOSSIL DIG

Note - This Fossil Dig is shown vertically as they are an attractive wall decor, but it is also intended for horizontal use buried with sand.

130108  
Fossil Dig  
Australian Tertiary Mammal  
Large Outdoor  
L 250 x W 230 x H 60cm - 61kg

This Australian exploratory fossil dig casting is in the shape of Australia, showing prehistoric animals that roamed our lands many years ago.

It is intended as an educational play piece for indoor / outdoor area to be used as an exploratory dig for young palaeontologists to explore.

The fossils are positioned into the logical geographical locations of the Australian continent where they occurred.





# Megafauna Reconstructions - Fossil Digs

## AUSTRALIAN FRESHWATER DOLPHIN DIG - EXTINCT MEGAFAUNA

This Australian Freshwater Dolphin Dig provides an educational experience for young palaeontologists to understand the skeletal structure of our prehistoric freshwater dolphins that existed in our not too distant past.

130112  
Fossil Dig  
Australian Freshwater Dolphin  
Large Outdoor  
L 270 x W 130 x H 20cm - 61kg

Note - This Fossil Dig is shown vertically but is intended to lay flat on the ground and buried with sand.





# Megafauna Reconstructions - Fossil Digs

HULOTHERIUM FOSSIL DIG  
MOUNTAIN DIPROTODON

Note:

This version does NOT include sides. This allow  
for fossil to sit flat within an existing sandpit



Length - 1800mm

Width - 1100mm



Fossil Dig in childcare centre

Note - This Fossil Dig is shown  
vertically as they are an attractive  
wall decor, but it is also intended  
for horizontal use buried with sand.



140093  
Hulotherium Fossil Dig  
(Mountain Diprotodon)  
L 1800 x W 150 x H 1100cm - 40kg



# Megafauna Reconstructions - Fossil Digs

DIPROTODON OPTATUM - GIANT MARSUPIAL FOSSIL DIG SANDPIT

Height of sandpit  
Wall Sides - 190mm



Diprotodon Optatum - Giant Marsupial fossil dig sandpit is designed with a border to enable it to be filled with sand. This is to provide children with an interactive discovery play piece whereby the hidden skeleton can be gradually uncovered with brushes and spades.

**Note** - This Fossil Dig is shown vertically as they are an attractive wall decor, but it is also intended for horizontal use buried with sand.



Width - 1500mm

NWFDDO  
Diprotodon Optatum  
Giant Marsupial  
Fossil Dig Sandpit  
L 200 x W 1500 x H 19cm - 40kg



Length - 2000mm



# Megafauna Reconstructions - Fossil Digs

GENYORNIS NEWTONI - LARGE FLIGHTLESS BIRD  
- FOSSIL DIG SANDPIT

Length 1800mm

Width 1100mm



Genyornis Newtoni sandpit is designed with a border to enable it to be filled with sand. This is to provide children with an interactive discovery play piece whereby the hidden skeleton can be gradually uncovered with brushes and spades.



Note - This Fossil Dig is shown vertically as they are an attractive wall decor, but it is also intended for horizontal use buried with sand.

NWFDGN  
Genyornis Newtoni  
Large Flightless Bird  
Fossil Dig Sandpit  
L 180 x W 110 x H 19cm - 40kg

Height of sandpit  
Wall Sides - 190mm





# Megafauna Reconstructions - Fossil Digs

THYLACOLEO CARNIFEX - MARSUPIAL LION  
FOSSIL DIG SANDPIT

Length 1800mm x Width 1100mm x Depth ? - Weight Approx 30kg

Height of sandpit  
Wall Sides - 190mm



Thylacoleo Carnifex - Marsupial Lion sandpit is designed with a border to enable it to be filled with sand. This is to provide children with an interactive discovery play piece whereby the hidden skeleton can be gradually uncovered with brushes and spades.

**Note** - This Fossil Dig is shown vertically as they are an attractive wall decor, but it is also intended for horizontal use buried with sand.

Width - 1100mm

Length - 1800mm

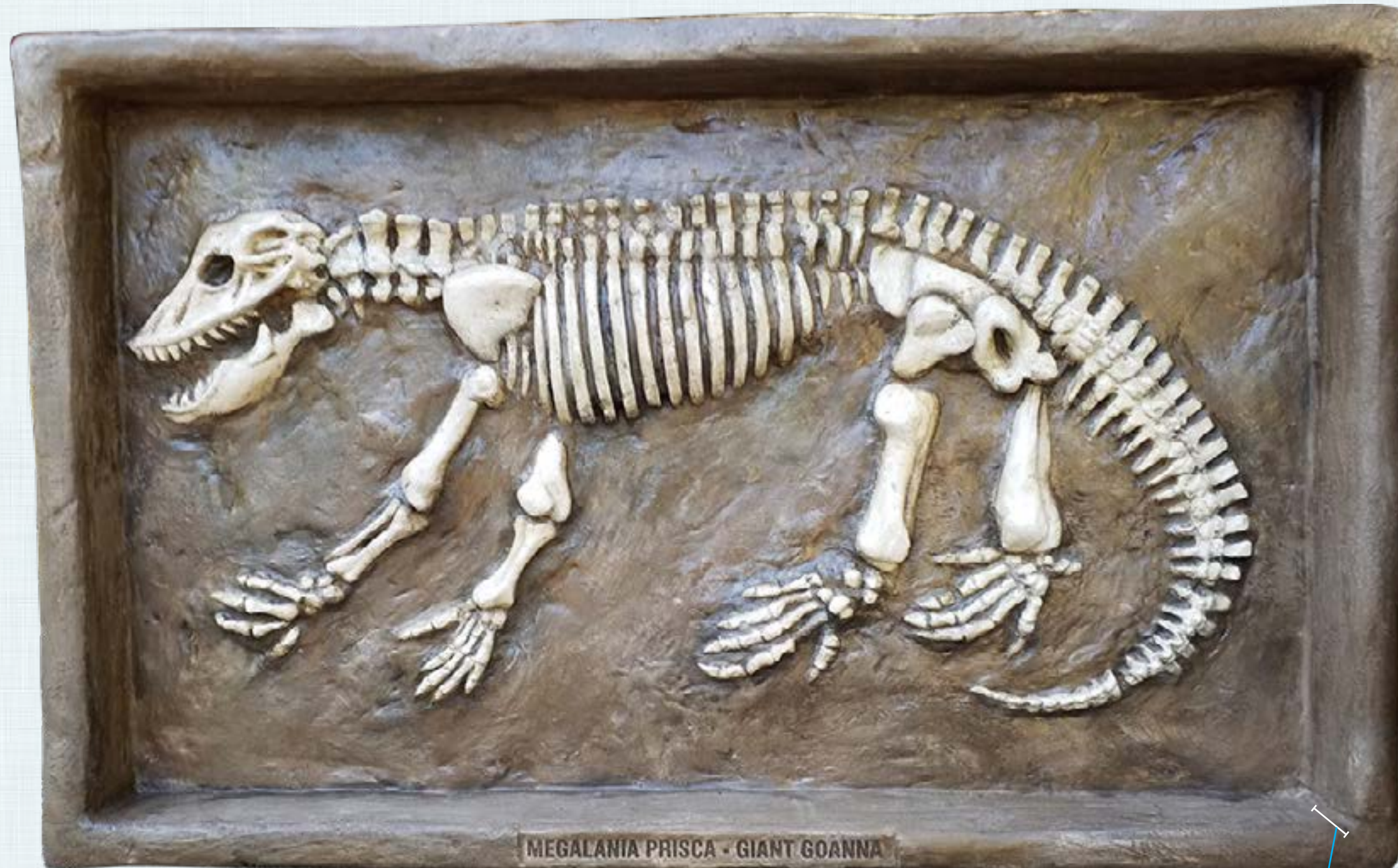
NWFDTC  
Thylacoleo Carnifex  
Marsupial Lion  
Fossil Dig Sandpit  
L 180 x W 110 x H 19cm - 40kg





# Megafauna Reconstructions - Fossil Digs

MEGALANIA PRISCA - GIANT GOANNA  
FOSSIL DIG SANDPIT



Width - 1500mm

Length - 2400mm

Height of sandpit wall  
Sides - 190mm



Megalania Prisca - Giant Goanna Fossil Dig Sandpit is designed with a border to enable it to be filled with sand. This is to provide children with an interactive discovery play piece whereby the hidden skeleton can be gradually uncovered with brushes and spades.

*Note* - This Fossil Dig is shown vertically as they are an attractive wall decor, but it is also intended for horizontal use buried with sand.

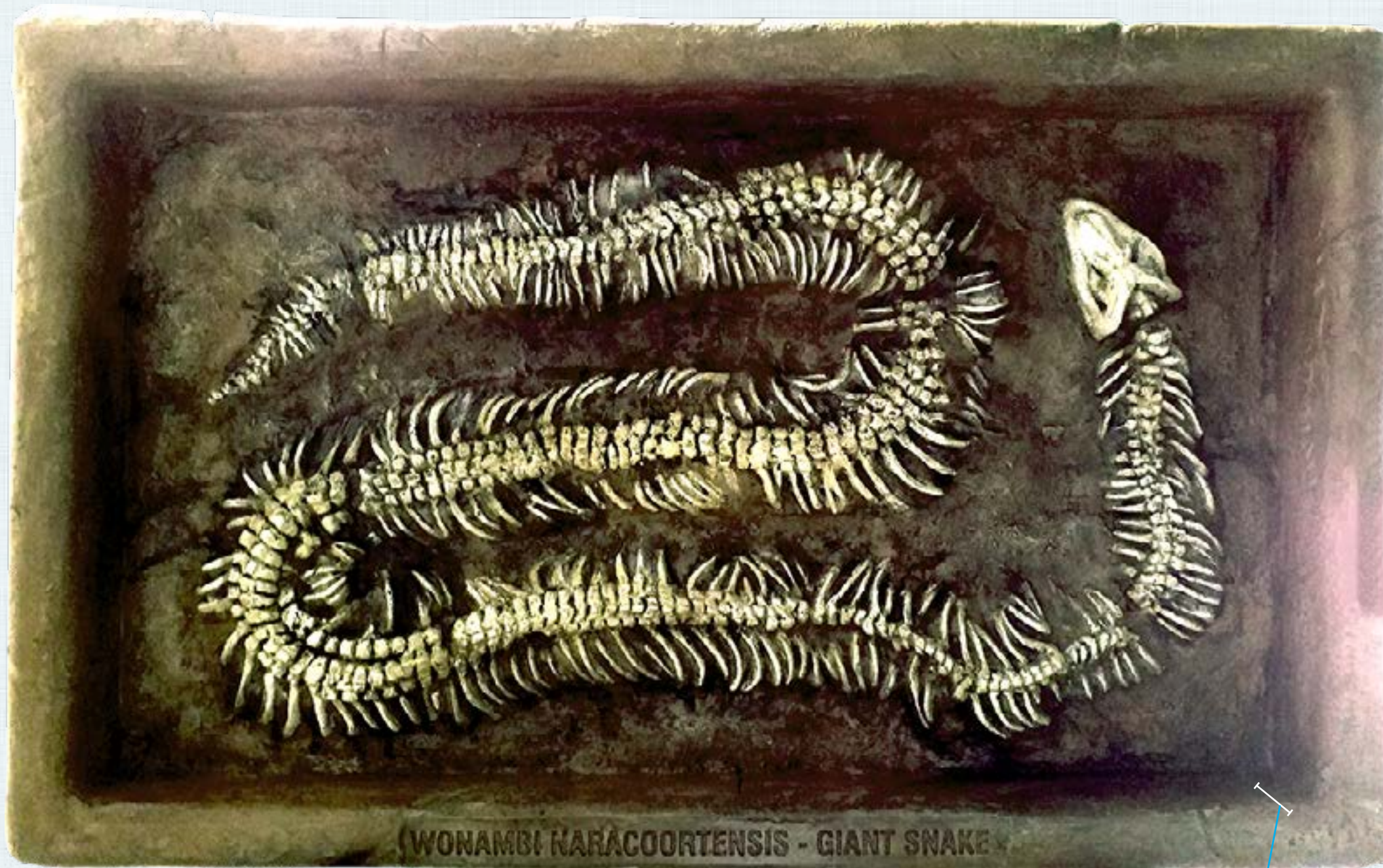
NWFDMP  
Megalania Prisca - giant Goanna  
Fossil Dig Sandpit  
L 240 x W 150 x H 19cm - 40kg





# Megafauna Reconstructions - Fossil Digs

WONAMBI NARACOORTENSIS - GIANT  
SNAKE FOSSIL DIG SANDPIT



WONAMBI NARACOORTENSIS - Giant Snake Fossil Dig Sandpit is designed with a border to enable it to be filled with sand. This is to provide children with an interactive discovery play piece whereby the hidden skeleton can be gradually uncovered with brushes and spades.

**Note** - This Fossil Dig is shown vertically as they are an attractive wall decor, but it is also intended for horizontal use buried with sand.

Width - 1100mm

Length - 1800mm

Height of sandpit wall  
Sides - 190mm

NWFDWN  
Wonambi Naracoortensis  
Giant Snake Fossil Dig Sandpit  
L 180 x W 110 x H 19cm - 40kg





# Megafauna Reconstructions - Fossil Digs

PROCOPTODON GOLIAH - GIANT KANGAROO  
FOSSIL DIG SANDPIT



Procoptodon Goliah - Giant Kangaroo Fossil Dig Sandpit is designed with a border to enable it to be filled with sand. This is to provide children with an interactive discovery play piece whereby the hidden skeleton can be gradually uncovered with brushes and spades.

**Note** - This Fossil Dig is shown vertically as they are an attractive wall decor, but it is also intended for horizontal use buried with sand.

Width - 1100mm

Length - 1800mm

Height of sandpit wall  
Sides - 190mm

NWFDPG  
Procoptodon Goliah  
Giant Kangaroo Fossil Dig  
Sandpit  
L 180 x W 110 x H 19cm - 40kg





# Megafauna Reconstructions - Fossil Digs

RIVERSLEIGH PREHISTORIC SWAMP SCENE  
BRONZE FINISH

RIVERSLEIGH PREHISTORIC SWAMP SCENE - BRONZE FINISH

THIS PIECE IS ABOUT  
L 100CM X W 5CM H 60CM

This is a 3 dimensional bas-relief interpretation of the painting of D-SITE by Dorothy Dunphy in the book Riversleigh by Mike Archer & Susan Hand & Henk Godthelp

A unique bronze wall plaque depicting Australian megafauna habitat with flora & fauna  
Length 100cm x 5cm wide x 60cm High



Various finishes  
available





# Megafauna Reconstructions

THE D-SITE INTERPRETIVE CENTRE  
3D WALL RELIEF AT RIVERSLEIGH - NW QLD

GIANT CROCODILE ATTACKS  
BARAWERTONENSIS - BAS RELIEF

THIS WOULD NEED TO BE MORPHED ONTO  
A VERTICAL WALL AND REJOINED

THIS PIECE IS ABOUT  
L 600CM X W 40CM H 250CM

This inside  
wall relief in  
3D depicts a  
moment back in  
time when the  
giant terrestrial  
crocodile  
Baru Wickeni  
attacks a giant  
Dromornithid  
Ratite (Big Bird)



Natureworks was  
commissioned to design  
and build the entire  
interpretive centre and  
toilet block in 2003 for  
the world heritage listed  
D-Site. The hero piece for  
this site was the bas-relief  
of the giant crocodile and  
bird morphed into the  
cave structure.

Two different giant dromornithids also known as mihirungs, thunder-birds or demon ducks are known from Riversleigh. Shown in the plaque is Bullockornis or "Big Bird". The other bird species recorded was Barawertornis tedfordi. These huge flightless birds occurred from late Oligocene to Early Miocene.

D-site Interpretive centre Riversleigh exterior entrance



D-site Interpretive centre Riversleigh







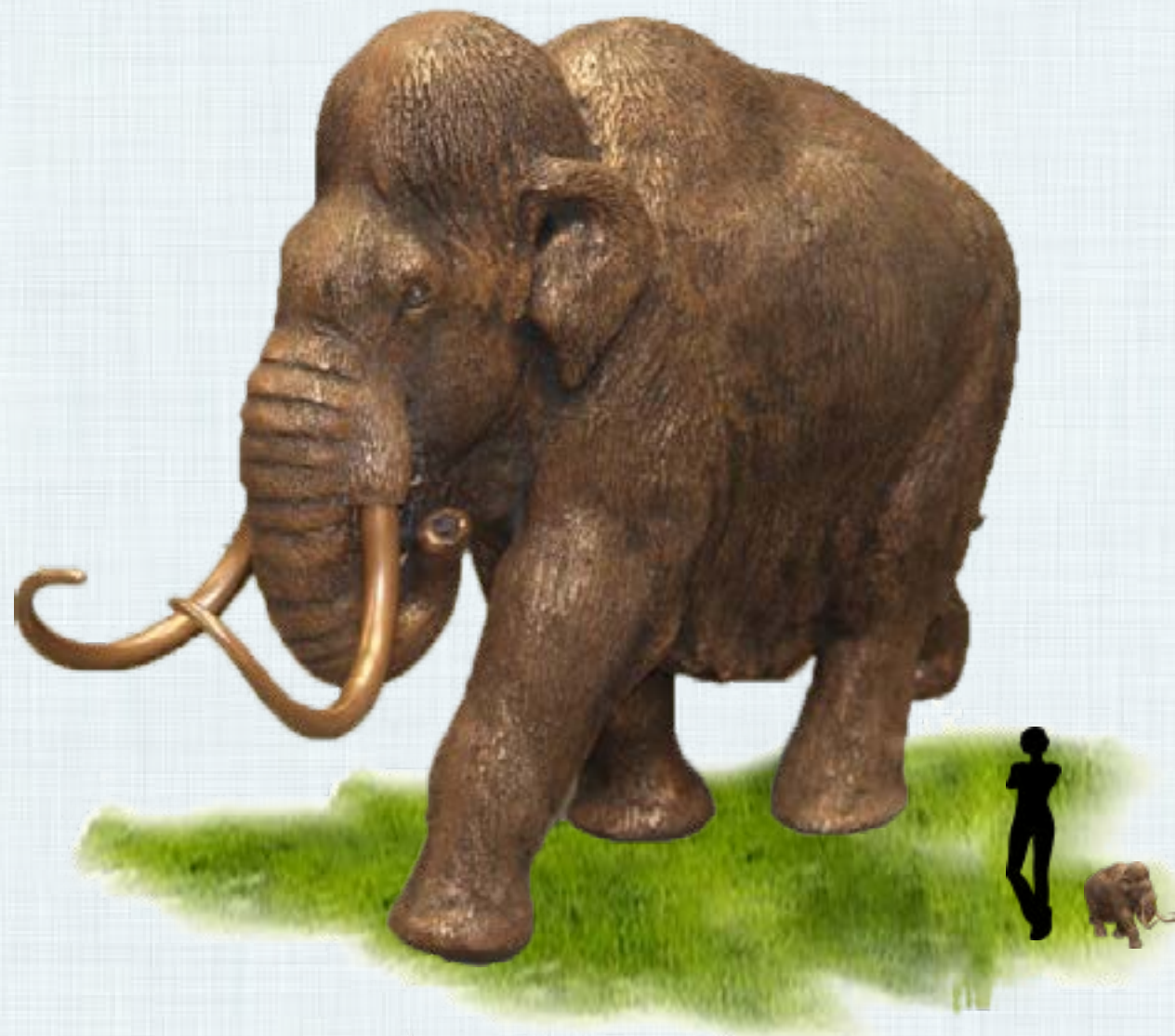


# Megafauna Reconstructions - Exotic

MAMMOTH - DEFINITIVE  
NATURAL & BRONZE

MAMMOTH - DEFINITIVE - BRONZE

**110014BZ**  
Mammoth - Definitive  
Bronze Finish  
L 70 x W 22 x H 49cm - 3kg



**110014**  
Mammoth - Definitive  
L 70 x W 22 x H 49cm - 3kg

MAMMOTH - DEFINITIVE - NATURAL





# Megafauna Reconstructions - Exotic

SCRUB TURKEY - GIANT

DODO BIRD - STANDING ON BASE

THIS PIECE IS ABOUT  
L 71CM X W 53CM H 93CM

DODO BIRD - STANDING ON BASE





# Megafauna Reconstructions - Exotic

## DODO BIRD - EXOTIC



Rear View



The Dodo (*Raphus Cucullatus*) was a flightless bird which once lived on the island of Mauritius. The last bird was killed in 1681. It was slow, fat, flightless and tasty!

At 40lbs in weight it was a favourite food source for early sailors wanting to dine regularly on fresh roast chicken on their sea-journeys. It was just under 1 metre tall.

Due to the fact that the Dodo bird has become a symbol for man-made extinctions, Natureworks decided to undertake the reconstruction of this famous bird in 2015.

120007  
Dodo Bird  
L 71 x W 53 x H 93cm - 13.2kg



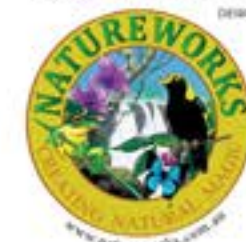
# Megafauna Reconstructions

MEGAFAUNA - CONCEPT DESIGN

## Megafauna Exhibit

1. Phascolonus Wombat
2. Wakaleo on log
3. Komodo dragon 3m
4. Bullockornis
5. Thylacine on rock
6. Zaglossus Giant Echidna
7. Meiolania Tortoise
8. Monitor lizard life size on tree out side of the exhibit

NATUREWORKS



732 MT GLORIOUS RD  
HIGHVALE QLD 4520  
PH: +61 7 3289 7555  
FX: +61 7 3289 7788

E: [info@natureworks.com.au](mailto:info@natureworks.com.au)  
W: [www.natureworks.com.au](http://www.natureworks.com.au)

**COPYRIGHT:**  
**NATUREWORKS**  
Copyright Natureworks Pty Ltd  
ALL RIGHTS RESERVED  
Under no circumstances is this  
concept allowed to be copied  
in whole or part without written  
permission of NATUREWORKS  
NON DISCLOSURE APPLIES  
© Natureworks Pty Ltd







Natureworks On-site Megafauna Swamp





## Natureworks On-site Megafauna Swamp







Natureworks On-site Megafauna Swamp





Natureworks On-site Megafauna Swamp





Natureworks On-site Megafauna Swamp



# Megafauna Reconstructions - Human & Hominids

HOMINIDS  
3D SCULPTURES

SCULPTING SCALED MODELS IN CLAY



SCALED INDIGENOUS MODELS IN EXHIBIT





# Megafauna Reconstructions - Human & Hominids

LIFE SIZE ABORIGINAL SCULPTURE  
PLAYING DIDGERIDOO

LIFE SIZE ABORIGINAL SCULPTURE  
- PAINTING ON PAPER BARK





# Megafauna Reconstructions - Human & Hominids

LARGER THAN LIFE SIZE -  
STANDING ABORIGINAL WARRIOR  
FAMILY





# Megafauna Reconstructions - Human & Hominids

LARGER THAN LIFE SIZE -  
STANDING ABORIGINAL WARRIOR  
FAMILY

