



COUNTIES MAINTENANCE SOLUTIONS LTD

Check our reputation at www.nocowboys.co.nz

Contact us for your next home improvement project

All types of building, bathroom renovations & handyman tasks undertaken. Franklin based.

Ph Jim 022 181 0729



TREAT MUM AT CASTAWAYS RESORT

MOTHER'S DAY SET MENU

9.05.2021

LUNCH \$35 (2 COURSE)
DINNER \$59 (3 COURSE)

—

SPA & DINE PACKAGE
\$155 PER PERSON

—

GIFT VOUCHERS AVAILABLE

BOOK NOW
CASTAWAYS.CO.NZ | 09 236 5041



WEST FRANKLIN

Breeze

A breath of fresh air for West Franklin

VOLUME 2, EDITION 5

WESTFRANKLINBREEZE.NZ

PH: 09 235 7835

MAY 2021

Waiuku "mayor" opens Museum's Main Street

Kevan and Barbara Lawrence were welcomed to the opening of Waiuku Museum's Main Street project on Friday 16 April, by Museum chairman Richard Garvey as the "mayor and mayoress of Waiuku".

Kevan wore the former Borough of Waiuku mayoral chains he had worn some years ago, and once more became mayor as he officially cut the ribbon to the new display.

Waiuku lost its borough status when it was amalgamated into the Franklin District Council in 1989. Kevan had been one of only two mayors of Waiuku since its formation in 1955. The mayor who proceeded Kevan was well-known local physician Dr Sam Whiteside.

The Museum's project has come to completion recently with the tireless co-ordination of committee member Bruce Parry, and the result is a credit to his team.

Main Street contains a replica of several old Waiuku businesses which include Vern Hair and Trevor Blackburn's barber shops, Garnett William's shoe and cobbler store, Richardson's jewellers and watchmakers, Duthies haberdashery shop, Wallace Supplies grocery store, Doctor Howden's surgery and the Waiuku News newspaper printing office.

The new streetscape is open on Wednesdays 10am to 12 noon and Sundays from 1.30pm until 4.00pm.



Kevan proudly shows the mayoral chain he had worn before 1989 when Waiuku ceased to be a borough.

Riding high

STORY BILL DEED /// bill@westfranklinbreeze.nz

Easter weekend saw helicopter rides taking passengers on a trip around the peninsula and over the lighthouse.



Helicopter pilot Brent Williams

On Easter Friday, Sunday and Monday the service operated from a paddock near the lighthouse, while on Easter Saturday the rides were a feature of the very successful Awhitu School auction and gala day.

Helicopter pilot was Brent Williams and was assisted by Jenny Letcher and his family.

Brent told the Breeze that over 500 passengers were taken on the helicopter rides over the weekend. Six passengers was the maximum load per trip.

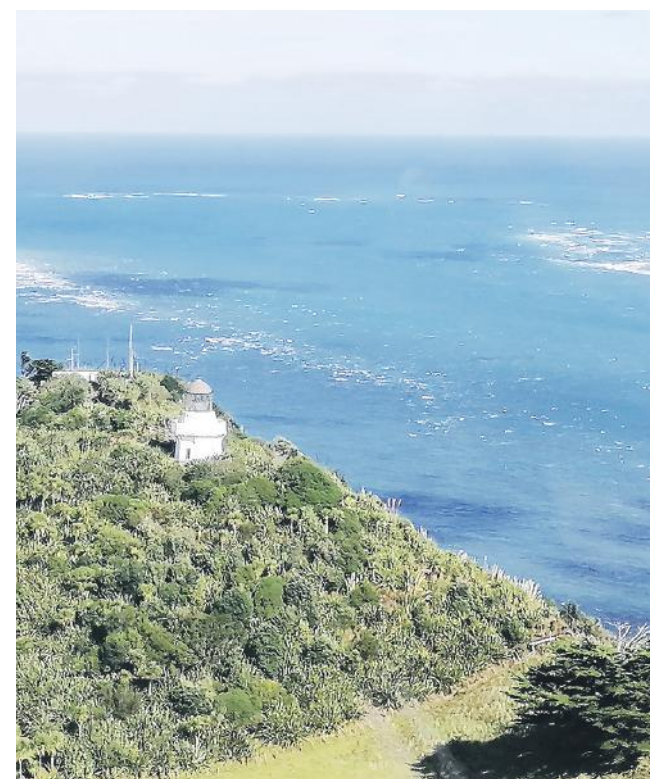
"We are really overwhelmed by the response," said Brent. "It was a bit of a gamble because the hireage of a helicopter is not cheap, and we had no idea if the weather would be kind to us, or if there was enough interest from the public."

"Both factors were in our favour and it was a huge success."

"On Sunday, cars were parking along the lighthouse access road right out to the main road. It was a huge attraction, not mentioning the lighthouse itself," he said.

Brent is normally a helicopter pilot in Western Australia where he transfers harbour pilots 80 kilometres out to huge iron ore ships awaiting to go into port and load the vast supplies of iron ore.

Hopefully other opportunities for flight will come about in the future.



A view of the lighthouse and Manukau Bar taken from one of the helicopter flights

COMMENT AND OPINION



Land transport plan extremely important

Andrew Baker
Franklin Local Board

Just closed for submission is the extremely important Draft Regional Land Transport Plan. This is the ten year road map for where Auckland's transport priorities. It focusses on key things like transport options, how we build and maintain our assets, dealing with growth and climate change.

As we all know, the greatest challenge though is funding. The funding of transport projects is complex and currently involves a combination of Council generated funds through the likes of rates and the current Auckland fuel tax alongside Government funding via NZ Transport Agency – Waka Kotahi.

Auckland's population has grown on average by 1.8% annually over the past ten years and is expected to continue to grow by 1.5% each year by 2031 or another 260,000 people. This puts pressure on everything, none more so than our ability to pay for the critical infrastructure we need to catch up, keep up and have in place for the future. In total, Auckland needs around \$34 billion in transport funding over the next ten years ... eye watering stuff.

Whilst there are some big investments coming in that are either in or will benefit those of us living in Franklin such as the rail electrification, motorway widening and Mill

Road corridor, those in the west won't find many things directly relating to your patch.

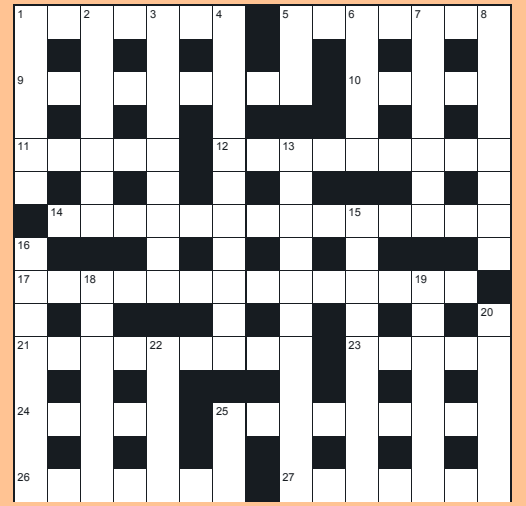
However there are a couple of areas that I believe are extremely important and are things that the Local Board will be giving plenty of feedback on. How we maintain our roads is a massive thing for us. You don't have to drive far to see that the condition of some our roads is not great and that maintenance has slipped. The plan talks about a change in methodology for asset management with an approach that differs from the current one size fits all maintenance to a more tailored, fit for purpose approach. This means our rural roads that have high volumes of heavy traffic might be dealt with in a way to be able to withstand the type of traffic on it. This requires a change in funding and a huge increase in renewal funding, something that has not increased in about eight years.

The other area is public transport, where we need fit for purpose services able to best meet our needs. We fought hard to get the bus services to and from Waiuku and would love to see the likes of train services in time. The big projects coming like electrification will hopefully be the catalyst for greater uptake of buses and trains meaning we can have more services able to stand on their own.

Waiuku Fire Brigade Callouts MARCH

3	Otaua Road	Smoke in vicinity
3	Glenbrook Road	Trees down
9	Smith Road	Medical
10	Racecourse Road	Vegetation
12	King Street	Bench on fire
13	Glenbrook Road	MVA
13	Karioitahi Road	MVA
13	Waiuku Road	Vegetation
13	Campbell Street	Vegetation
18	Glenbrook Road	MVA
18	Rangiwhea Crescent	Cultural cooking fire
20	Awhitu Road	Vegetation
24	King Street	Car fire
26	Wymer Road	Medical
26	Grahams Beach Road	Smoke in vicinity
27	Kitchener Road	Effluent spill
28	Honey Road	Horse stuck
29	Hermitage Road	PFA
29	Colbeck Road	House
29	Waiuku Road	MVA
30	Kitchener Road	PFA
31	Kitchener Road	PFA

THE BREEZE Crossword



ACROSS

- 1 River makes camp too unsafe? (7)
- 5 Breaking law's base and you get bird (7)
- 9 What vigilant people pay for treatment (9)
- 10 Woman shortly to become nurse (5)
- 11 Landlord entertains student composer (5)
- 12 Commander-in-chief takes a moment to show scar (9)
- 14 Parisienne's the very best? (5,2,2,5)
- 17 He's one I singled out to behave stubbornly (3,2,4,5)
- 21 New local bar visited by English and Spanish gentleman (9)
- 23 Go in for some decadent erotica (5)
- 24 Agree with account (5)
- 25 Poisonous mixture of drinks? (9)
- 26 Gave nag a seat? (7)
- 27 Get shot of data Lee falsified (3,4)

DOWN

- 1 Very good and fruity (6)
- 2 Nominal head of section abandons altruist sadly (7)
- 3 Very small chap is old American fighter (9)
- 4 Company events said to be happening at the same time (11)
- 5 Number's up for boy (3)
- 6 A daughter likely to conform (5)
- 7 Left to set fire to coal (7)
- 8 Anyhow we delay taking on Liberal with a squint (8)
- 13 Refrigeration spoils oldest cargo (4,7)
- 15 Most intelligent 150 with the height of ambition (9)
- 16 Teaches US cadet manoeuvres around end of June (8)
- 18 After onset of gangrene sailor lost blood and talked incoherently (7)
- 19 I rant madly, trapped in the French toilet (7)
- 20 Mate runs into addict (6)
- 22 Trusty leaders of local organisation backed non-professional (5)
- 25 Unhappy taking part in crusade (3)

sepio insurance management LIMITED
Ph. 09 238 5188
Mob. 021 343 335
www.sepio.co.nz
Specialists in commercial and domestic insurance

Answers on page 15

POLICE REPORT with Sgt Dean Borrell

Police recover stolen digger

A success story first - following information from the public we went to a Awhitu farm and recovered a stolen digger that was taken from a building site in Te Kauwhata a few days before. The digger was not small and worth at least \$50,000, it needed a large transporter to shift it. But whilst at the property we uncovered a large cannabis cultivation set up involving four shipping containers full of plants, fans etc. A huge amount of dried cannabis and cannabis plants were seized. The cannabis cultivation operation was set up to sell and supply cannabis on a large scale, a number of people were spoken to and arrests will follow.

Current problems in this town are cars driving dangerously and skidding on some of our residential streets usually late at night. (I wrote about the same issue when I last worked here 20 years ago!) We ask people who see or hear such behaviour to please report it at the time via 111 or if its afterwards phone the 105 reporting line or you can report it on line. Once reported we can collate information and build a case against the offending driver or better still catch them in the act if we are close at hand. Usually these drivers are caught following an investigation not at the time. Don't be afraid to give your name, we will not pass it to the offenders but we do need evidence — a registration and best evidence is a video or photo of the driver. The town has excellent CCTV and we use that if they are driving in that area. Once we ID the car or driver we can seize the car and make arrests. We are currently working on a couple of drivers and intersections.

The worst roads in town for speeding seems to be Colombo Road still. Its 50km and we are always catching drivers out: slow down.

We are still getting off road motorbikes playing up at Karioitahi beach in the weekends and sometimes on the town streets and reserves. I spent most of last Saturday on the beach policing it but as soon as we leave the bikes turn up. Again keep reporting it on 111. Dirt bike riding on our streets and public places are a problem across south Auckland right now, it's too dangerous for us to chase them if they don't stop for us, so we rely on prevention before they get started or investigating it afterwards.

A new constable started at Waiuku last week, Constable Robinson joins us after a few years on front-line at Papakura and Pukekohe, he's super keen to get stuck into some of our issues.

Police are carrying out firearm safety enforcement on and off the river during duck shooting opening day, we will be breath testing shooters. It should be common sense anyway but never mix alcohol and guns.

Don't forget the Steel n Wheel street festival coming up on Sunday 9 May, I've organised a huge police turn out — police dogs, the police tractor, Armed Offenders Squad, the mobile police station, the Eagle helicopter and more! If you are interested in policing or thinking of joining come and see our stand on the day.

— Dean

Auckland Rescue Helicopter Trust MONTHLY MISSIONS APRIL

Glenbrook 2nd W3 Glenbrook Crew tasked to Glenbrook to assist a girl who fell four to five metres from a tree. She was flown to Middlemore Hospital in a moderate condition.

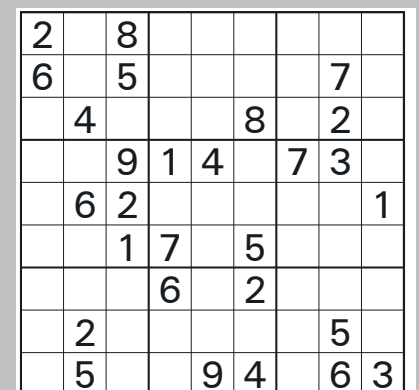
Awhitu 4th W1 Awhitu Crew tasked to Awhitu to assist a male patient in his 60s involved in a motorcycle accident. As he was in a minor condition, transportation to hospital by helicopter wasn't required and Westpac 1 returned to base.

Waiuku 6th W1 Waiuku Crew tasked to Waiuku to assist a female patient in her 30s involved in a motor vehicle accident. She was flown to Middlemore Hospital in a serious condition.

Awhitu 10th W1 Awhitu Crew tasked to assist a boy suffering burns. He was flown to Middlemore Hospital in a minor condition.

Karioitahi 17th W1 Crew tasked to Karioitahi to assist a patient suffering a medical complaint. Unfortunately, the patient died and crew were tasked to Mission 449 while returning to base.

Sudoku InDeed WE CAN



Answers on page 15

Contact us

Editorial:
Tiffany Brown:
tiffany@westfranklinbreeze.nz
Keely Muir:
keely@westfranklinbreeze.nz

Advertising Sales:
Marilyn Jamieson:
sales@westfranklinbreeze.nz

Drop in Agents:
Action Office Products Depot,
16 Bowen Street,
Waiuku. Ph: 09 235 7835



Publishers:
Bill & Ngaire Deed:
bill@westfranklinbreeze.nz

Distribution:
circulation@westfranklinbreeze.nz

Otaua School remembers local war dead

STORY KAY VINCENT /// kay@westfranklinbreeze.nz

Otaua Primary School held their Anzac service on Friday 16 April with special guests from the Waiuku RSA as well as parents, grandparents and community members filling the school multi-purpose room to overflowing. The service was led by head boy and girl Monty Shuker and Dearnna Hull, assisted by house captains Tayla Lamb, Kalani Barker, Noah Cathcart and Milan Burns. Other students were involved as speakers, singers, musicians, audiovisual technicians and wreath bearers. An especially moving part of the service was the acknowledgement of thirty-seven men from Otaua who served in World War 1 and who are remembered on the Roll of Honour at the Waiuku War Memorial Town Hall. Students read out an account of each of the four men from the district who were killed in action, as their photos on a background of poppies were projected onto a screen. Wreaths were made by each class and placed at the base of the indoor flagpole, and the flag was lowered by Paige Linn-Stewart during the

Last Post. The students were well practised and prepared for the special assembly and all maintained a respectful silence after the Ode and while the flag was being raised after Reveille. The service finished with the whole school singing a medley of World War 1 songs as guests filed out. Acting principal Jocelyn Brodie said, "The ANZAC service was a special time where we could come together as a community to learn about local men who died in the pursuit of peace and to give thanks for that selflessness." At the end of the day, the wreaths were collected to be hung on the War Memorial gates at the Otaua Bowling Club on Anzac Day. The four men from Otaua who were killed in action in World War 1 were Guylott Henry Jackson Deed, James Archibald McNair, Elvyn Arthur McDonald and Clarence Taylor Cobourne. Next month the Breeze will feature eulogies of these four Otaua men who lost their lives in World War One.



Wreaths the Otaua School Anzac commemoration.

Anzac Day well attended



Anzac day in West Franklin was a huge success after two years absence at both Awhitu and Waiuku. Large crowds attended the newly formatted parade in Waiuku. An addition at the cenotaph was the Lest We Forget arch which had previously been used in the hall services.

Graham overwhelmed



There was only standing room at the Waiuku Cosmopolitan Club on Anzac Day afternoon when Graham Dickey received his community award for lifetime service in the road transport industry and community organisation support. He was presented with a stainless steel wall hanging depicting the first truck his company owned and a tractor similar to one in the collection at his vehicle museum. The wall hanging was cut with high power water jets at Scott's Steelworkz of Waiuku and it was admired by all. Graham also received a Parliamentary Certificate from Port Waikato MP Andrew Bailey.

SUPER COZY &
comfort
Dr. Feet
ANATOMIC FOOTWEAR



Made in Croatia

bakers
Shoes & More Ltd

8 Kitchener Road, Waiuku PH: 09 235 8507
info@bakersshoes.co.nz www.bakersshoes.co.nz

Authentic railway pine sleepers
NOW AVAILABLE

- Ideal for that rustic look around your garden
- Be quick before stocks run out

\$59⁹⁵ each

Only while stocks last.

FREE DELIVERY IN THE FRANKLIN AREA

At Cocky's we can CUSTOM BUILD almost anything to your specifications including:

SLEEP OUT (LINED - EXYARD)	4.2m x 2.4m	\$11,050
A FRAME CHICKEN COOP	2.4m x 1.2m	\$615
GOAT SHELTER	1.2m x 1.2m	\$350
DOG KENNEL & RUN	2.4m x 1.2m	\$695
KENNEL & RUN (LINED)	2.4m x 1.2m	\$775
CHOOK SHED	2.4m x 1.2m	\$995
IRON GARDEN SHED	2.4m x 1.6m	\$1,395
IRON GARDEN SHED	3.6m x 1.6m	\$1,750
AVIARY	2.4m x 1.2m	\$1,095
ANIMAL SHELTER	1.8m x 1.5m	\$615
PLYWOOD MOWER SHED	2.5m x 2.2m	\$3,125
PLYWOOD MOWER SHED	3.6m x 2.1m	\$3,795
CHOOK VILLA	1.2m x 1.2m	\$780
CHOOK VILLA	1.8m x 1.2m	\$895

Call now or pop in for a FREE Quote

Cocky's Corner

BuildLink

123 Queen St. Waiuku | Phone 09 235 9880 | www.cockyscorner.co.nz
OPEN: Mon-Fri: 7:30am-5pm | Sat: 8am-1pm
HARDWARE, TIMBER & BUILDING SUPPLIES

Sand to Mud attracts good numbers

After last year with the event being cancelled, this year the Lions Club of Waiuku's Sand to Mud event has come back with vengeance.

There were 336 participants in the event, ranging from young children to the elderly.

Winners of the adult male category were Carl Reid (first), Quinn Gardiner-Hall (second) and Mervyn van Gompel (third). Carl's winning time was 30 minutes and 29 seconds, just under two minutes ahead of Quinn, and a further minutes before Mervyn came home. Carl was also the first contestant to become the King of the Hill, which is the first runner to get to the top of the Karioitahi hill.

The adult women's winner was Chloe Vincent, Mervyn van Gompel's wife, so it became a family celebration.

The tug of war event showed some strengths,

with members of the new gym RX Fitness winning overall.

Surf Lifesaving Kariaotahi were the benefactors of the profits from the Sand to Mud event, and donations were made to help their new building programme.

Lions Club president Allan Standing said he was very pleased with the number of entries in this year's event.

"The competitors had a chilly start at Karioitahi, but I am pleased the weather treated us right at Massey Park," he said.

New fitness business shows its strength

RX Fitness is a new business in Belgium Street opposite the Lions Station.

Owned by Nikki and Mac Hira, RX Fitness



Lions Club president Allan Standing, Quinn Gardiner-Hall, Mervyn and Chloe van Gompel and Carl Reid.

had a fully interactive team with several participating in the Sand to Mud run and winning the tug of war event.

In full support of Surf Lifesaving Kariaotahi's goal to raise \$4.6 million before consent conditions expire next year, the RX team donated their \$500.00 to the club.

"We are so proud to be able to support such a big project that Surf Life Saving Kariaotahi have on their plate at present, our group never gave the donation a second thought," said Nikki Hira.



Ken Reid and Kapi Peita

Last but not least

The last two walkers to finish the Sand to Mud event were Ken Reid and Kapi Peita. They were both happy with their time for the course at 1 hour and 57 minutes.

"We really enjoyed the walk. The hills are a bit of a killer, but as long as you don't weaken, the downward way to the Massey Park tape was well worthwhile," said Kapi.

Husband and wife team excel

After Mervyn van Gompel, came in third in the men's section of the Sand to Mud event, he kept looking towards the winning ribbon after he finished.

Mervyn was looking forward with anticipation to his wife Chloe Vincent completing the course. He didn't have to wait long because Chloe was not far behind him becoming the first lady across the line.

Chloe also achieved the honour of becoming the Queen of the Hill as she led the female contestants towards Waiuku. However, not only did Chloe win the eastward race, but she ran out to Karioitahi before the event as well.

Chloe has a local background and Mervyn is from Belgium. The couple recently returned home from Germany.

Surf lifesaving delighted

Brad Walters was very satisfied with being the recipient of the Lions Club Sand to Mud event this year. "The Lions Club have been very supportive of our project to build a new building," he said.

"The Lions run a very smooth event and we are always pleased to work in with them."

Their old building has been in use for almost 50 years with a new purpose-built facility. Costing \$4.6 million, the organisation has a time limit to have the building completed by the middle of next year.

"There is a Council requirement to have all of the funds available before building commences, and then there is the time limit as well," said life member and building committee chairman Jim Coe.

Surf Lifesaving Kariaotahi have raised just over half of the required amount.

The Breeze asked about their season at the beach this year.

"We are very happy to have not had to make any rescues this summer period. We have been concentrating on prevention, even though visitor numbers to the beach have been higher this summer than in recent years," said Jim.



Tara Coe controls start of tug of war

44th SAND TO MUD FUN RUN/WALK



Thank you to all our volunteers on the day without whom it would not have been possible.

NEW WORLD

Vouchers and tug of war prize

KNIGHT AND DICKEY

Loan of truck

NZ STEEL SOCIAL CLUB

Loan of marquee

BROUGHAM BUSES

Ferry runners to the beach

POKENO LIONS



KING OF THE HILL
Carl Reid

QUEEN OF THE HILL
Chloe Vincent

TREAT MUM AT CASTAWAYS RESORT

MOTHER'S DAY SET MENU

9.05.2021

LUNCH \$35 (2 COURSE)
DINNER \$59 (3 COURSE)

—

SPA & DINE PACKAGE
\$155 PER PERSON

—

GIFT VOUCHERS AVAILABLE

BOOK NOW
CASTAWAYS.CO.NZ | 09 236 5041



The RX Fitness team

Lockdown gave time to reassess future

STORY AND PHOTOS KEELY MUIR // keely@westfranklinbreeze.nz

Lockdown last year allowed Tom Vanderlaan the opportunity to slow down, relax and reassess. He discovered that after thirteen years as Principal of Waiuku College it might be time to do something different.

"I felt I no longer had 100% motivation for the job, and that's not fair to the school or the students," says Tom.

Leaving in July 2021, this may be the last you see of Tom as a principal, but certainly not within the community. Tom has a strong desire to do voluntary local environmental activities, circumnavigate the Manukau Harbour by kayak, and also use his experience to help other principals, along with supporting local tertiary and iwi based initiatives. Tom also wishes to see more of his new granddaughter in the South Island, spend more time on his lifestyle block, and get back into his hobbies of mountain biking and sea kayaking.

Tom grew up in South Auckland, has a degree in geography, and spent his earlier career in deputy principal roles in Papakura High and Manurewa High. He recalls that when he started looking for a principals job that, "I saw Nganeko Minhinnick in a television documentary, speaking about Waiuku and the Manukau Harbour, an area for which I've always had an interest, especially in its vast history. Shortly after, the job of Waiuku College Principal came up, I was looking for a change, so I went for it. It was a great moment for me," says Tom.

Arriving in the middle of term two 2008, Tom was welcomed with a powhiri, and felt excited for the future in his new role.

"The school, students, staff and community were in an unhappy place when I first arrived. My task over the next five over years was to turn things around. I saw great potential here, and an opportunity to bring more positivity. I felt that everyone wanted to see the school succeed," says Tom.

Tom started his move for positive change by getting out in the community and being seen. "Success is built on relationships, and time needed to be spent on putting effort into building broad and effective networks within the school and the community," says Tom.

Some of the many highlights of Tom's principal role, have been the repairs made to the Awhitu Environmental Camp, which took a year's worth of working bees to fix. Working with Ngati Te Ata, and building connections with them as the local iwi. Seeing property improvements made to the school, including modernising the Library, transforming the science block, (from an out-dated design, to a modern learning facility), the building of the Whare Matoro, building a new socialscience block and having the roading and parking put through to the school gymnasiums to improve community access.

Tom Vanderlaan's time at Waiuku College has also seen the student NCEA achievement results



Retiring Waiuku College principal Tom Vanderlaan

improve. "2020 saw the pass rate go up to 92% for Maori and 93% across the whole school for Level 2 NCEA. Measured against the averages for our other local state high schools, Waiuku College has consistently been the best over the last 10 years," says Tom.

The college was an early adopter of BYOD (bring your own device) in 2012, with the school providing funding and loan schemes for students unable to get their own computer. "This initiative has been pivotal in recent times, helping alleviate the challenges presented by lockdowns," says Tom.

The school also implemented a 'no phones' rule for students since the end of 2019. "This has eliminated some of the social issues and distractions within the classroom and the school grounds, which has pleased teachers, students and parents," says Tom. The school roll has also grown by 120 students this year, and is expected to keep growing in the future. "This is an exciting time of growth for the future of Waiuku College," says Tom. "With more growth, comes more opportunity for the kids."

Tom wishes to thank his Boards of Trustees (past and present) and the community that have supported him in his role here, and made the time successful and enjoyable. "I have really enjoyed my time here, getting to know the community, and enjoying everything the area has to offer. It has been a privilege to have been a part of it."

Toms' advice to the future principal, "Invest in a positive culture. Look for the positives not the negatives, and always acknowledge the kids, the teachers and the community that sustains the school"

World showcase of Franklin organisations

Community support groups doing stellar work in the Franklin district are being given the chance to tell the world what they do.

They're invited to showcase their organisations at a Social Services Expo in Pukekohe on May 26.

Organised and hosted by Community Networks Franklin, the expo is free for community groups to participate. Entry to the event will also be free for the public on the day.

CNF chair Jan Wallace says it's a great opportunity for organisations to share information about what they do, and to forge connections with other groups and the public.

"A very wide range of community services and support are available throughout Franklin and we want to tell people all about them.

"In these troubled times, we are finding people need support more than ever. This is a chance for groups to let them know they are not alone and that there are many caring people and organisations ready to help."

She says it's often difficult for individual organisations to get their message across but the expo is the perfect vehicle for spreading the word.

"As well as raising awareness and providing relevant information and support, we also think it's very important that the people serving our community are able to connect and network with each other."

See advertisement in Notices section on page 15 for expo details.



THURSDAY NIGHT ENTERTAINMENT - MAY		RESTAURANT
6th	RICK SHIRLEY	<p>Why not spoil your Mum, Grandma, Wife, Aunty to a meal here at Shunters Restaurant on Mother's Day... she will receive a complimentary glass of wine on arrival... Special menu designed for that special Mum To book phone 092359131</p>
13th	ARMAND AND GERI	
20th	WOODY	
27th	BIG JOHN	
MAY - WHAT'S ON		
QUIZ NIGHT Every Fortnight Tuesday 11th & 25th at 7pm		FRIDAY NIGHT IS: <p>Kids under the age of 11 eat free off the kids menu with a paying member.</p>
HOUSIE Every Fortnight Tuesday 11th & 25th at 10am		
MEMBERS AFTERNOON		
Every Tuesday From 1pm to 3pm		MAY - WHAT'S ON
KARAOKE FRIDAY THE 28th Downstairs from 7pm		

Autumn TRENDS

FREE MEASURE & QUOTE

Autumn is for enjoying, now is the time to replace old tired curtains with our extensive range of roller blinds.

20% OFF
SUNSCREEN AND ROLLER BLINDS

50% OFF
VERTICAL BLINDS

Affordable Blinds

Contact Bob or Margaret: 09 235 0121, 021 041 3434
 E: solleygang@hotmail.com • 2 Tui Place Waiuku
 www.affordableblinds.net.nz

Brand new trail under construction

STORY TIFFANY BROWN /// tiffany@westfranklinbreeze.nz

A crowd of local iwi, residents, council and business representatives gathered at Elsie Reserve on 1 April for the sod-turning and blessing ceremony for the newest stretch of Waiuku Trails pathway which will link the existing section of path with the a new 1.4km all-weather accessible pathway.

After a square of sod was removed by Trails committee chairperson Barry Gibbon, the ceremony included traditional te reo M ori oratory, karakia (blessings), mihi (thanks), and waiata (songs) performed by Rangi whea kapa haka students from Sandspit Rd School.

Roimata Minhinnick and Paora Puru of local Ngati Te Ata iwi (tribe) opened with karakia and mihi whakatau (greetings). Roimata praised everyone involved with the project, including kaum tua George Flavell and kaitiaki (custodians) Karl Flavell and Edith Tuhimata for their tireless work with council on behalf of iwi and community.

Franklin Local Board Chair Andrew Baker acknowledged the students, saying "the task of making good decisions for subsequent generations rests with us and it was good to see the children take part in the ceremony, because we have a responsibility to ensure what we do today makes sense for their future." He also recognised the committee for getting the project this far. "This was a case of the community leading something and council getting out of the way."

Edith Tuhimata said the group had been working for five years on the project. "We're finally seeing the fruits of our labours." She spoke of the benefit of the trails as encouraging the entire community to increase their health and wellness, and she particularly acknowledged Barry's work as the driving force behind the project. Edith said the work of kaitiaki (custodians) is to care for whenua (land)

through the genealogical tie to the ancestral land. Rangi whea teacher Raukura Baker said despite the early morning start it was great for the students to be involved putting, tikanga M ori knowledge into practice at the Ngati Te Ata blessing of the hikoi (walk) and wheels-accessible path.

This part of the trail is the second of the Waiuku Trails Implementation Committee; the first was the path connecting Tamakae Reserve along the estuary to Sandspit Reserve. For a certain 22-metre section of boardwalk being laid, local company FuturePost's recycled plastic posts are being trialed in place of traditionally-used wooden posts. Managing Director of FuturePost, Jerome Wenzlick said, "I'm quite excited to see this project going ahead. This is a prime example of the circular economy in action - plastic waste from Waiuku and the Auckland area being turned into posts that are then being used in projects like this!" Jerome said having these posts as the foundations for the boardwalk is a 'no brainer'. "They won't be affected by the hostile marine conditions so will last a very long time, making for a cost effective long term structure." The 200mm recycled plastic strainers prevent chemical leaching at the water's edge and offer a potentially unlimited lifetime of use over pine posts.

The project's construction began in April, and the new path should be ready for public use in May.

Above right: Whaea Raukura Baker leads the children from Rangiaiwhea kapa haka at the trail blessing ceremony

Right: Part of the new boardwalk



Pride for Otatau

STORY AND PHOTOS KEELY MUIR /// keely@westfranklinbreeze.nz



The new administration wing, showing the house colours red for swamp, yellow for river, blue for coast, and green for harbour.

Good things take time, or so the saying goes. That appears to be quite the case for Otatau School and their new administration wing.

"It took a year in the making for the project to be completed due to lockdown technicalities. Full credit to Pukekohe Builders for doing a great job though, and sticking to a time frame given the circumstances," says acting principal Jocelyn Brodie.

The core planning team for the project, Carol Graham, Jocelyn Brodie and Maria Kelsey worked closely with the Ministry of Education, architect, builders, and were overseen by the Otatau School BOT.

The building has gone ahead at the MOE's request, given the projected role growth for the future of the school. "They released the funds for the project, and stipulated exactly what we were allowed to do," says Jocelyn. "It had to be a stand-alone, non-teaching space. We chose to build a new administration block."

The new build includes a large and welcoming administration office, the principal and deputy principal offices, and a large and relaxing staff room.

The old space which included a small office, staff room, meeting room/office and other small rooms will now be used for a specified meeting room, learning support space, teachers on release, and outside agency learning areas, such as music teachers.

The building was designed in such a way that the staffroom now feels more connected to the outside environment. "We are in an area the children are using, so we still feel connected. We can see and hear the children, but staff still feel they are getting a break," said Jocelyn.

A term two project will be to replace the vegetable gardens that were removed for the build. This will consist of four gardens that will wrap around the new administration wing.

Maria Kelsey feels her new administrative office is "no longer a crammed in railway station platform. Its bright, light and open. It's a lovely environment to work in."

The building was blessed by local kaumatua, Awhitu, who is a past pupil of the school and uncle to one of the current mums Caroline Watene, who are part of the Noble family. This happened at 7am on Thursday 25 March. The times of 7am and 7pm are special and significant times for these occasions to take place.

Head boy Monty Shuker and Head Girl Dearnna Hull, have both enjoyed watching the building take shape, and turn into the finished project which beautifully represents their school. "I feel a sense of pride when I walk into the building," says Monty. "I like the way they have chosen the colours of our houses," said Dearnna, "and how it represents who we are."



Head girl Dearnna Hull, head boy Monty Shuker and current acting principal Jocelyn Brodie

National **Andrew Bayly**
MP for Port Waikato

I will be holding a clinic for constituents in Waiuku:

Monday 24 May, 3.00-4.00pm
St Andrew's Centre,
85 Queen Street, Waiuku

Please make an appointment by contacting the electorate office:
09 238 5976

Funded by the Parliamentary Service.
Authorised by Andrew Bayly,
Parliament Buildings, Wgtn.



Grahams
funeral services

Serving all districts in Franklin. Mark Graham and his caring team will guide your family.



Funerals and Memorials

Ph 235 8380 • www.grahamsfunerals.co.nz

Turning of turf gives more power for the people

Counties Power Consumer Trust

Counties Power last month 'turned the turf' on a new substation site at Barber Road, Bombay. This future-proofs the network to cater for growth both in population and electricity demand on the eastern side of the region. This is part of a large \$40m works programme which also see the end-of-life Mangatawhiri and Ramarama substations decommissioned. The works area includes Razorback, Paparata, Lowry, Pinnacle Hill, Medhurst, Bombay, Barber, Mill, Great South, Portsmouth and Hillview Roads, including side roads off these.

Transpower will also be completing work on their network in the area simultaneously. Counties Power is working in parallel with Transpower to schedule works and streamline processes to minimise disruption.

This year two of the trustees must retire but are eligible for re-election. For information on being a trustee, including the nomination and election process, please go to our website www.countiespowertrust.org.nz or email the secretary at secretary@countiespowertrust.co.nz. Nominations for two trustees will open 5 May and close on 15 June 2021.

The winter sports have started coming to our screens and some of us actually go to support them in person. Watch out for Counties Power sponsorship of some of our local well-known teams – Northern Stars, Counties Manukau Heat and Steelers teams. All that exercise and skill makes us proud.



Counties Power Consumer Trust board members: David Spratt, Christine Rupp (Chair), Don Thomson, Phil Beston and Alan Eyes.



Right: Counties Power Chief Executive Judy Nicholl turning the sod.

Young thespians attract sell out crowds

STORY TIFFANY BROWN /// tiffany@westfranklinbreeze.nz

Twenty-six home-educated students aged between seven and 17 years entertained three sold-out audiences in Waiuku War Memorial Hall on 26 and 27 March with Shoestring Theatre's latest production My Brother Joseph.

The cast worked for just two weeks full-time to bring the show to the stage under the guidance of original scriptwriter and director Douglas Roberts.

The production was the latest in a series of theatre education projects, receiving funding from Auckland Council's Creative Communities Fund and Douglas said the shows attracted enthusiastic praise from audience members.

A reworking of the familiar story of biblical figure Joseph, the youngsters were involved in every aspect of the production including stage management, lighting, costume and design.

"A team of adults also worked tirelessly alongside the children sewing costumes, assembling props, building the lighting sound rig, creating publicity, directing scenes, constructing stage furniture and catering for hungry cast members during the intervals. It was a true community effort" said Robert.

A series of intensive theatre workshops preceded the show to help the students develop acting skills. All but the youngest actors had spoken character roles and the streamlined production used minimum scenery and props in order to focus mainly on the children's acting.



Tony Collin performs as Farid in My Brother Joseph



It was eleven year-old Tony Collin's second time performing with Shoestring Theatre and he relished the experience. "I enjoyed having the chance to be with other homeschoolers and being in the performance together. Douglas is such a great director and I hope to be able to be in next year's performance as well," Tony said.



NOTICE OF ELECTION

for the Counties Power Consumer Trust 2021 election

Under the Counties Power Consumer Trust Deed of Trust, notice is given that on Saturday 7 August 2021, an election will be held for two (2) trustees of the Counties Power Consumer Trust under the First Past the Post electorate system by postal and online voting.

NOMINATIONS

Each candidate must be nominated on a nomination paper obtainable during normal business hours from:

- the Returning Office, Independent Election Services Ltd, Level 2, 198 Federal Street, Auckland;
- by telephoning 09 973 5212 or 0800 922 822 to have one posted out;
- by accessing www.countiespowertrust.org.nz

Completed nomination papers can be lodged with the Returning Office (at the above address), or posted to PO Box 5135, Victoria Street West, Auckland 1142, but must be received not later than noon on Tuesday 15 June 2021.

Nominations must be accompanied by a deposit of \$200 GST inclusive (payable by bank transfer, cash, or eftpos).

A candidate may submit a candidate profile statement with their nomination paper for sending out with the voting papers to consumers.

Dated at Pukekohe, 4 May 2021

Dale Ofsoske, Returning Officer
Independent Election Services Ltd.
for Counties Power Consumer Trust

phone 09 973 5212 or 0800 922 822

Locals Helping Locals

For all your Residential, Lifestyle & Rural requirements.
Call us today!



Garry Johnson

021 688 477

garry.johnson@harcourts.co.nz

Leonie Gillott

0274 985 722

leonie.gillott@harcourts.co.nz

Leonie & Garry

Harcourts Waiuku

Licensed Agent REAA 2008

WAIUKU BUSINESS + DEVELOPMENT

MONTHLY NEWS AND EVENTS FROM THE WAIUKU BUSINESS & DEVELOPMENT ASSOCIATION

WWW.WAIUKUTOWN.CO.NZ



Cooking with The Shires

A wonderful relationship has been forming between our local restaurant.



The Shires and George Street Kindergarten as they collaborate to teach the children some of the fundamentals of cooking. On this latest trip the children were making homemade pizza accompanied by a delicious fluffy. It is such an exciting treat for the children as they go on an excursion from kindy and into town. They experience what it is like to be in a commercial kitchen, something quite different to home.

They get to create something from scratch they can then eat and enjoy.

The Shires generously donate their time and kitchen space, working with the children. Chef Robyn Stewart is always incredibly patient, listening to the children and imparting her knowledge as she works with the pre-schoolers.

Kim Callis from George Street Kindergarten explains "We are so grateful to have developed such a meaningful connection with The Shires. Our Tamariki have been able to develop many valuable life skills as they create meaningful connections with their community, form healthy relationships with food, develop their hand-eye coordination and fine motor-skills, learn to work with and alongside others as they negotiate, co-operate, and share spaces and resources, not to mention the mathematical and scientific skills they gain as they measure ingredients and observe change.

We feel incredibly lucky The Shires give their time, space and resources and we can't wait for our next visit."



WAIUKU BUSINESS + DEVELOPMENT

WAIUKU BUSINESS & DEVELOPMENT MONTHLY NEWS UPDATE

Hi everyone,

The Waiuku Steel n Wheels Festival is nearly upon us and together with our awesome Steel 'n Wheels committee the WB&DA are really excited to bring this great event to the community of Waiuku.

Due to covid constraints this has not been the easiest to organise, but we are happy to bring you a great line up of vehicles, attractions and markets that are sure to please.

As with all our events – we are always reliant on volunteers to help run the day to keep the costs down. If you would like to donate an hour or two of your precious time to help that would be much appreciated. Please email me direct on waiukutownmanager@gmail.com or call 09 235 6231.

Our amazing group of life savers from the Life Saving Kariaotahi Club have offered to monitor the refuse stations on the day for a donation which will be put towards their head quarters rebuild.

This year we have a suggested donation for entry. Please know that the funds collected on the entry gates all go into ensuring the following

year's event delivery. It is not for profitable gain.

This event is really important for our town not only in terms of promotion for tourism but also economically so please help us promote it far and wide to friends and family.

I couldn't finish my monthly article without a huge shoutout to the Waiuku Trails committee and the local contractors and volunteers that are constructing the extension of the trails from Sandpit Reserve around to McCall Drive.

The speed of the deliverance, the professionalism and workmanship are just incredible and a true testament to what communities and local contractors can achieve together when given the opportunity.

Stay safe.

Sharlene Druyven
Waiuku Town Centre
Manager



Temporary road closure

Queen St, Waiuku (between King St and Court St), Bowen St, Waiuku (between Queen St and 35A Bowen St), Kitchener Rd, Waiuku (Between Queen St and 13 Kitchener Rd) and River Ln, Waiuku (between Victoria Ave and Kitchener Rd) will be closed from 7am until 4pm on Sunday 9 May 2021 for the Waiuku Steel n Wheels Festival 2021.

This closure applies to all except authorised and emergency vehicles. For further information, please contact Auckland Transport on 09 355 3553.



Holiday fun at Waiuku Zero Waste

This school holidays saw the first in a series of workshops hosted by Waiuku Zero Waste and facilitated by The Recreators alongside Waiuku Community Workshops. These free workshops included making a bug hotel and creations made from "junk" found at The Junktion. Both sessions were full to capacity and enjoyed thoroughly by the children in attendance. Waiuku Zero Waste would like to thank Franklin Local Board for their continued support and funding which allowed the workshops to be delivered for free. There are plans to deliver a similar programme in the next school holidays as well as some mid-term sessions for adults.



THIS TEAM WORKS FOR YOU

The WB&DA support and advocate for local businesses to help drive economic growth in our town and surrounding areas.



Chairperson
Julie Powell
SUNSET SURF & TURF
09 235 9219
sunset@ps.gen.nz



Treasurer
Sherilyn Fretton
MIKE PERO MORTGAGES & FINANCE
027 569 2235
sherilyn.fretton@mikepero.co.nz



Secretary
Jeremy Lamb
WAIUKU NEW WORLD
09 236 5050
jeremy.lamb@nw.co.nz



Matthew Murphy
WAIUKU WARD
021 198 0424
matthew.murphy@aucklandcouncil.govt.nz



Lisa-Marie Anderson
ST JOHN
021 280 0881
lmAnderson@xtra.co.nz



Angela Wilson
COCKY'S CORNER
021 125 5730
angiewilson55@outlook.com



Darren Wilson
WAIUKU ITM
0275 637 968
darren@waiukuitm.co.nz



Gareth Manning
MUNTED JANDAL
027 546 1327
gareth.manning@bluescopesteel.com



Town Centre Manager
Sharlene Druyven
021 0827 5763
waiukutownmanager@gmail.com



Town Centre Manager Assistant
Harriet Beaton
09 235 6231
waiukutma@gmail.com

WB&DA MEMBER PROFILES

Botanica on Bowen

Meet Dee and Kendal, two local ladies who have recently opened their new shop 'Botanica on Bowen'.

The pair first met whilst doing a local market- and since then have done many markets and pop-up shops together. Kendal from 'The Foliage Box' sources beautiful indoor plants and pots. Dee from 'Rimu Gully' is a beekeeper and makes her own soaps, candles and balms.

"We knew our botanical inspired gifts made a great combo, and so when the opportunity to have our own little shop in

this cool town came up, we couldn't really say no".

The shop is open Thursday and Friday 9am- 5pm, and every Saturday 9am- 1pm. To keep up to date with new products and other shop gossip, give them a follow on Facebook or Instagram.

If you haven't already, pop into their shop and say "HI!".

"We just wanted to say thank you to our town for all your support so far. We're really excited to be here, and hope you love our shop as much as we do".



Facebook: @botanicaonbowen
Instagram: @botanica_on_bowen



The Connective



Who motivates the motivator?

The Waiuku Business and Development Association's second Connective for 2021 is taking place on the morning of June 3. We invite our members to a special, free breakfast seminar, hosted by the WB&DA, facilitated by Dale Carnegie Training and sponsored by Sherilyn Fretton of Mike Pero Mortgages and Julie Rodgers of Mike Pero Real Estate.

Listen as Dale Carnegie Training discuss what makes a great leader, how to keep your staff motivated and how to stay inspired.

Areas covered include: What makes a good leader, how to keep people motivated, how to maintain your own levels of motivation and inspiration, the secret of tapping into people's potential as well as handling mistakes while keeping staff engaged.

Spaces are limited so make sure secure your place by registering online via the Member's Only section of waiukutown.co.nz and follow the link to RSVP directly with Dale Carnegie Training.

Waiuku Information Centre JP Service



Did you know the Waiuku Information Centre offers a JP service? Every Wednesday from 11:30am until 1:30pm a Justice of the Peace will be able to witness you sign a document, verify and certify copies of documents, complete declarations (including statutory declarations), affidavits or affirmations as well as swearing affidavits or affirming affidavits.

This is a free community service, with no appointment necessary. Simply come to #2 Queen Street, Waiuku between the times mentioned above to see the JP.

CARS ★ BIKES ★ MARKETS ★ MUSIC

MAY 9TH 10-2PM

Waiuku Steel 'N' Wheels Festival

Franklin Local Board
grassroots
NEW ZEALAND STEEL
WAIUKU BUSINESS + DEVELOPMENT

THE KENTUR HOTEL

WSW2020

WAIUKUTOWN.CO.NZ

for free registration of your vehicle
WAIUKUTOWN.CO.NZ

WANTED

FAMILIES, FRIENDS AND FELLOW FUN LOVERS OF
CARS ★ BIKES ★ MARKETS ★ MUSIC

MAY 9TH 10-2PM

Manukau Harbour, Drury, Pukekohe, Bombay, Tuakau, WAIUKU

INCLUDING
★ CARNIVAL RIDES
★ HELICOPTER FLIGHTS
★ PUTT PUTT ENGINES
★ OPEN AIR MARKET

\$5 DOLLARS ADULTS
GOLD COIN
KIDS UNDER 16
SUGGESTED DONATION

DRAGSTER DISPLAY

EAGLE HELICOPTER
POLICE TRACTOR

TRAIN CAB & CARRIAGE RIDES

ROCKET CAR

GROOVEDIGGERS

FRANKLIN ROCKERS DANCE GROUP

ARMED DEFENDERS & DOG SQUAD

CHAINSAWS V8 + HARLEY

RECLINER ★ ROCKERS

GENERAL ENQUIRIES
waiukutownmanager@gmail.com

Franklin Local Board
grassroots
NEW ZEALAND STEEL
WAIUKU BUSINESS + DEVELOPMENT

Steel 'N' Wheels Festival

WOW group campaign for new pool complex

Two years ago a group of Waiuku women met to consider what charitable efforts they might put their energies into for the good of their wider community. As a result they conceived a vision for a heated community swimming pool and recreation complex their children and grandchildren might one day be able to enjoy.

The WOW (Women of Waiuku) movement was born, and now comprises around 15 members, led by Sue Markram and Serena Roper. Together with other volunteers, the pair spent about two weeks, outside Waiuku New World, speaking to locals and gathering signatures in support of their mission.

During this process the group heard countless stories and feedback about the state of our existing community aquatic facility Whiteside Pool on Kitchener Road, frustrations over the distance to the nearest full-service heated pool facility at Pukekohe, and stories about an earlier ill-fated effort to establish a community pool in the town. "So many people had different stories," said Sue. "We got approximately 2000 submissions, but we spoke to many more."

Many West Franklins know the story of the O'Hara land, but I spoke to Peter Sands, a cousin, to try to get to the bottom of the legend.

Bill and Joyce O'Hara were a community-minded local couple who worked hard and amassed a large estate by the time Joyce passed away about fifteen years after Bill died. The couple had no children and upon Joyce's passing, the estate of around \$5 million was bequeathed to some eight different charities.

Their property, around 60 hectares in total, ran beside the existing site of Waiuku College on Constable Road and across to the Waiuku Rugby Club grounds on King Street. Peter said he and several other family members would have liked to see the council buy the entire lot, but in the end it was just a parcel of 6.9346 hectares that was sold to Franklin District Council for \$120,000, on the proviso the land be used for sports and recreation for the community.

Peter didn't recall that the provision was stipulated in either of the O'Hara wills, although Serena said the WOW group has documentary evidence of the caveat through the O'Hara's former solicitor.

Whatever the legal ramifications, it remains well known among the community that Joyce and Bill intended their land to be



Sue and Serena photographed with college students at the site of lot P93210 (left) with Waiuku Rugby Club grounds on the right.

used for recreation for Waiuku residents.

Peter said that he and former Waiuku mayor Kevan Lawrence suggested to Joyce that the Council purchase the parcel of land with the idea of creating a heated community pool. The land is ideally situated centrally and between the rugby grounds and the college.

According to Peter, who was a councillor of Franklin District Council for six years, much work was done to set these plans in motion but things ground to a halt with the administrative changeover from Franklin District Council to Auckland Council in late 2010.

"We got a letter from the Franklin District Council saying the plans were 98%

complete," said Peter. "But when Auckland Council took over, they didn't take any notice." Because the plans had not quite been officially signed off, nothing further proceeded.

Franklin Local Board Chair Andy Baker said he was unsure of any official caveats or stipulations attached to the land, but that it was bought with future, unspecified and non-budgeted development in mind. "As it stands future recreation use is still the best use of it and will no doubt happen when demand requires it" he said.

WOW claims the community is growing rapidly, and the pressure on schools and facilities is immense.

Statistician Hugh Dickey puts our true population at 24,000 in Waiuku and the wider suburbs in 2020, and growing at 10-15% annually.

Community canvassing done by the group has also found that a disproportionate number of West Franklins never learn to swim because of the lack of accessible pool facilities, and people feel Whiteside Pool now more than 60 years old and only open four months of the year, is not fit for purpose. "It's not adequate," said Sue. "We talked to local children around Christmas time and they told us they just couldn't swim there during the holidays as it was too busy and they couldn't get in it."

Serena's motivation to see a decent aquatic facility in Waiuku is personal as well as altruistic. Her extended family chose to build a 'forever' home in Waiuku in 2015 following the diagnosis of a debilitating illness, and her goal is to see accessible aquatic therapies. "In my household, our needs are back injuries, growing pains, Parkinsons and multiple sclerosis. That's just my family. There are plenty of people on health benefits who could work, if therapy was available."

Serena's other primary objective is to eliminate the area's death-by-drowning and water injury statistics by making safe swimming education more available. "While volunteering for Waiuku Family Support, I realised how little resources there were for learner swimmers, especially near a dangerous beach that attracts people for fishing, watersports and swimming."

But Andy said despite its vintage, Whiteside Pool still has some life left in it. "The issue of a new swimming pool in Waiuku has been widely discussed over a number of years. It would be fantastic to be able to have a replacement for Whiteside Pool but pools are one of the most expensive things for any council to build and then operate and maintain." Andy said there is a robust process for assessing the need for pools, and Waiuku doesn't yet meet the criteria. He said WOW has been told a new pool is not achievable at

the moment in response to their numerous submissions. "A new pool in Waiuku is probably some time off," he said.

Besides an appropriately-sized public use swimming pool, the group wants to see a recreation centre and sports facilities, so that a range of local sports and activities can take place in one location. Their goal is to provide sports and swimming facilities for future generations. Everything in one place saves money, time and resources and creates employment opportunities within the local community.

WOW ideally wants to see a three-way partnership between the public, the business community and the council or government.

Sue and Serena have made WOW presentations at no fewer than nine council meetings, and are currently in the process of forming an incorporated society so they can make an application for the use of the land in question.

One idea they've put to the Local Board is the creation of a community garden, situated in one corner of the approximately seven hectare block. Andy said the board had done what it could to assist the group to achieve their aims. "The Local Board wants to see them achieving some of their goals as they are admirable, they just need to get all their ducks in a row and go through the appropriate steps."

Sue understands how daunting the task ahead of them is. A pool complex of the scale WOW envisages could cost a minimum of \$12 to \$15 million, while council-built pools tend to cost up to \$35 million. But she's not a woman to shy away from a challenge. "I've always been in business, and I've always worked with my community. I was widowed at 36, and the thing that really helped my children through was sport."

Peter Sands spoke regretfully of the pool that might have been, which would have cost far less than it will now. "Pools cost a lot of money now, and they don't run at a profit," he said, pointing out the need for carparks, making the site accessible and the services required to make a large complex facility work. "Waiuku is going to really change, with all the construction going on in the area." But can the existing infrastructure cope? Have service issues such as sewerage and water been properly dealt with to deal with this rapid expansion? Peter isn't sure.

WOW is actively looking for support from all sectors; sports clubs, the business community, and interested residents in the area, to keep driving their mission. Serena said if the project got underway, it would be a huge, overwhelming relief. "I would feel that our community is getting what we have been asking for, for years."

Serena's other primary objective is to eliminate the area's death-by-drowning and water injury statistics by making safe swimming education more available.

Mothers Day Special

GIFT Voucher

TREAT HER TO AN
EGYPTIAN ROSE HYDROJELLY FACIAL,
SHOULDER NECK AND SCALP MASSAGE
& AN EYEBROW TIDY (1HR TREATMENT)
for only \$109

the FACIAL Studio

THIS MOTHERS DAY

GIVE HER THE gift
OF "ME TIME"

www.thefacialstudio.co.nz

Kindy kids enjoy annual trike-a-thon

STORY TIFFANY BROWN // tiffany@westfranklinbreeze.nz

The annual Waiuku Kindergarten trike-a-thon raised \$1158 in April for the not-for-profit centre.

It's been 61 years since the Kitchener Road kindergarten first opened its doors to local preschoolers, and the fundraising trike-a-thon event has been an annual fixture for decades.

Head Teacher Lindy Ashurst said the teachers couldn't recall it ever being cancelled before 2020. "It has always been a well-supported wh nau get-together that is also a good fundraising opportunity."

This year's theme for the after-school event was 'essential workers' and children dressed up and decorated their bikes and helmets to take part. Lindy said there was tremendous excitement when a Waiuku Fire Brigade fire truck arrived to water blast loose gravel from the carpark and create a safe space for the track. "The children were so impressed by this and were thrilled at the chance to use the hoses, climb aboard the fire truck or sit in the police car and play with the lights and sirens."

Parent helpers then set up the track with road cones, signs and tyres, and the riders began pedaling around the track until fatigue overcame them

and the autumn evening closed in.

There were also 'essential worker' themed games to play, refreshments for riders and spectators, and each rider received a handmade medal. "It was such a fun night," said Lindy. "The money raised will go towards projects in the kindergarten's garden. Thank you so much Waiuku Fire Brigade, our Community Constable, the Lions Club, St John's Op Shop, New World, Mitre10, Bearepairs and parents for contributing to a very enjoyable evening."



Luna girls can do anything

STORY KEELY MUIR // keely@westfranklinbreeze.nz



Team Luna

Showing Waiuku girls can do anything they set their minds to, is team Luna — a group of active minded women, keen to have fun and try something new.

Put together by Rebecca Van Dijken, who is a keen softball herself, team Luna was created as a fun idea, that others were soon keen to be a part of.

Ninety percent of the team had never played before, but under frequent coaching and positive reinforcements from team captain/coach Rebecca Van Dijken, team Luna finished up third overall in the domestic competition for Pukekohe Softball Club.

Not wanting to be out shone, and with a serious case of FOMO (fear of missing out) team Ruckus was also created. This team was put together with some of the husbands and boyfriends of team Luna that were also keen to give softball a go. With a team mostly

of new starters to the game, and coached and captained by softball experienced Alain Van Dijken, Ruckus also finished third overall in the competition.

Well done Luna and Ruckus, trying something new, putting in the hard work, and having fun while doing it.

Slick back play and good defence

STORY TARA COE

Waiuku vs Patumahoe – Saturday 17 April 2021

Waiuku worked really hard making a change to ensure that we could get growth from our game last weekend and the hard work definitely paid off. It is a matter now of continuing to get the same growth each week.

Waiuku started well in the game against Patumahoe with a tough up front defence seeing our centre being knocked out in the first 10 minutes. Changes were made and play continued. Even though we still made mistakes the boys could defend well when under pressure and showed some real determination and grit.

With Waiuku up 5-0 at half time the second half was sure to be a battle of the clubs: a game which

turned to physicality, skill and determination. Patumahoe managed to get back into the game with a converted try. Waiuku needed to pull something out of the bag and managed to dart over the line two more times to secure some much needed points.

With quick defence from the forward pack and slick back line plays Waiuku managed to secure the 19-15 win at home which has instilled some more confidence into the side ahead of their next game.

Waiuku currently sit fifth on the Premier standings and will look to continue to grow and move up the ladder over the coming weeks.



Waiuku (green and red) in control of play while Patumahoe tackle hard.

Bowling forward

This season has been a big one for the Waiuku Bowling Club Committee and members as they set out to fundraise for upgrades essential to the Club's survival.

Being mindful of the proud heritage of the Waiuku Bowling Club, the club have been working towards promoting, fostering, engaging with the community to ensure their future.

The strong sponsorship from local businesses and wider areas has been very humbling for club members. Funding has been received from various charities, the community, along with past and present members.

With this support the Bowling Club been able to upgrade the most important items on the five year plan. The top of the list was the roof upgrade which was completed in January. Changes have also been made to the bar area, outside concrete areas/pathways, and a health and safety programme has been implemented which required small facilities maintenance upgrades.

With club membership of both full and social members increasing by 50% on the past

2019/2020 season, this has meant an increase from 80% to 150% of players in all our club competitions, ACT Tournaments and Club Championships. Club days are a social gathering on Tuesday and Saturday mornings.

The Waiuku community both young and old have been bowling on Friday nights, in the social twilight bowls and they have enjoyed the experience of being able to 'have -a-go'. A total of 135 bowlers participated over the past season, and many new members are joining having experienced bowling through this promotion.



Waipipi Bowling Club News

Waipipi Bowling Club hosted their final bowls tournament for the season on 15 April 2021 sponsored by three lady real estate agents from Barfoot and Thompson Waiuku.

Teams were entered from Pukekohe, Waiuku, Buckland, Clarks Beach, Patumahoe and Waipipi, a great day, sunny with a light breeze.

Winners were 1st Pukekohe: Trevor Bowden, Terry Lister and Kathy Lister. 2nd Waiuku: Andrea Williams, Pauline Sammut and Joe Sammut. 3rd Waipipi: Dave Hook, Eric Gillott and Emily Tekani, one of the sponsors.

A woman of many talents

STORY KEELY MUIR /// keely@westfranklinbreeze.nz

Marion Churchill, a stalwart of Waiuku who has had a local business career spanning over 30 years, has shown a dedication to any task put to her, and a willingness to help her community wherever it is needed. Marion currently 87, is showing the early signs of dementia.

We at The West Franklin Breeze pay tribute to Marion for the huge contribution she has made to Waiuku, and the history of our town. We thank her children, Barbara, Suzanne, Raewyn, Janice, Peter, David and John, Marion's 15 grandchildren and 18 great grandchildren for providing the following information.

Early years

Marion was born on 26 September 1933 at Gisborne to Clarence and Irene Gibbons. She was the sixth child of eight. Clarrie's occupation was a motor mechanic and in those days of the depression it was necessary for the family to move from town to town in search of work so that the large family could be provided for. Marion showed an interest in her father's work and became a capable mechanic herself. During the war, Marion's mother worked for the Dehydration Centre in Pukekohe, preparing food for the soldiers fighting. It was while living in Huntly that Marion's mother passed away, and Clarrie packed up the three youngest children and moved to Waiuku. At the time Marion was 13, and they lived at J. Renall Road Te Toro, and later at Bothwell Park Road Otua.

Marion's first driving lesson was in a Model T Ford, on Bothwell Park Road.

Clarrie remarried Ada Newsome and they decided to move to Dannevirke. Marion wanted to stay in Waiuku and finish her schooling at Waiuku District High School (now View Road School). Marion boarded with her sister Joyce.

During this time the school closed due to a polio epidemic, so all students had to do their work by correspondence.

Working Days

Marion's first job was a junior position at the local hairdressers, while she continued her schooling by correspondence. After a year she was forced to resign on doctor's orders as the perming solution was affecting her asthma.

In 1950 aged 16, Marion replied to an advertisement in the local paper for a 'junior girl shop assistant', on a one-month trial at the drapery and baby shop known as "Churchills" owned by Bill Churchill, in the building now occupied by Ray White Real Estate.

A year later, Bill opened another shop which he called "Wainwrights" in the building now known as Breadcrumb bakery, and promoted Marion to Manageress. (Wainwright was Bill's third christian name). This was an exclusive ladieswear shop, which became well known throughout the district. Marion held this position for eighteen years, during which time she married Bill Churchill and they had six children. Wainwrights closed in 1967 and the business was absorbed into Churchills.

Marion modeling for the shop

Marion soon reopened the Wainwright's premises as a coffee shop and dairy named the Marina Lounge. Churchills was still going strong throughout this time. After nine months of running the Marina Lounge, Churchills, the building of the steel mill, six kids, and very late hours (Saturday and Sunday), they decided to sell the Marina Lounge to Ian Smith.

In 1969, and with all six children at school, Churchills was sold and Marion decided to take what wool there was left in the business and open a wool shop. The Wool Shop was on Bowen Street (now Café Karma).

In 1971 Marion moved the business across the road to bigger premises (now Southern Podiatry) and then into Queen Street (now the right side of Barfoot and Thompson).

In 1979 the Wool Shop was sold to Mrs Jean Jennings, and Marion became a fulltime housewife and busy mum to her now, seven children.

However, the reprieve from work was short lived.

Not one to be idle, Marion had obtained her taxi license when Bill had bought his license 25 years earlier, and accepted an

offer to get behind the wheel of a Waiuku taxi. This job lasted for many years. During the time Bill had the taxi (1968), Marion used to go out on taxi calls late at night, to give Bill a rest from driving. At this stage women were not allowed to drive taxis at night, so Marion would go out wearing one of Bills hats to disguise herself in case anyone looked at who was driving.

Married and family life

Bill and Marion were married on 10 April at St Andrews Church, Waiuku. They had their wedding photos taken in Wainwrights shop. After the service The Waiuku Nauticals and the Junior Marching Team "The Golden Stars" performed a guard of honour.

They started their married life together living in the flat at the back of the RSA Building in Bowen Street. Marion and Bill bought their first home at 15 Kaiwaka Road (the little yellow house as they affectionately called it), a small two bedroom house which they outgrew in 1959 with three children.

They then moved to 34A King Street. This was a four bedroom villa with a separate lounge plus living room. The family lived here until 1978.

The main family home became a house designed by Bill and Marion on stage one of the Churchill subdivision at 28 Norfolk Rise.

Guiding

Marion started back into the guiding movement in 1964 by going onto the local association committee. She was on the committee for two years before taking on the new role as Tawny Owl at the first South Auckland Brownie Pack on 10 January 1966.

Marion was warranted for the first time in the guiding movement as a Tawny Owl on 15 April 1966.

In 1967 Marion attended a meeting the President of the L.A. Committee had called together all interested mothers and daughters to discuss starting up another Brownie pack in Waiuku. It was very well attended and after discussions, and Marion showing the girls the Brownie ring and salute, it was decided that another pack should be started.

In November 1967 the 27th South Auckland Brownie Pack started with 18 girls attending the first meeting. Marion received her Brown Owl Warrant in May 1968.

In 1983 Marion was asked to take the position of Division Commissioner for the Franklin area, and received her warrant on 18 May 1983 and held it until 10 February 1988.

In appreciation for all Marion's efforts she had put into the Guiding Movement she received four service honours, 1986 - Good Service, 1986 - Ten Year Bar, 1988 - Arataki, 1988 - Thanks badge (from the Waiuku district).

Sports

January 1950 saw the start of a new hobby for Marion. She attended a meeting called together by Mr Syd Jarvis, with the intention of starting up a marching team.

From many applicants, one senior and one junior team were put together. Marion was made team leader of the senior team, called the Waiuku Nauticals.

In their first year together as a team, they received five cups and many medals, which was a great achievement for this newly formed team. Marion herself received many good placings in the team leader competitions.

The Waiuku Nauticals were together for four years before disbanding after their coach, Mr Vic Williams moved from the district.

From the early 1950s Marion belonged to the Otua Amateur Athletic and Cycling Club, and was an active competitor for many years. Her best events were the high jump and long jump, and held both of these records for a number of years.



Marion leading the Waiuku Nauticals Marching team.

Property development

In 1972, Bill and Marion decided to develop the 14 acres they had slowly acquired over the previous 13 years on Norfolk Rise.

The new road within the subdivision was named Churchill Terrace.

Other associations

Even though Marion had a large family to tend to, a business to run and was involved with the guiding movement, she still found time to join other organisations.

Marion was a member of the HSA (women's division) for close to 40 years, and held positions of secretary and treasurer.

Marion was a member of COGS, Community Organisation and Grant Scheme. Marion was nominated to go on this committee from the Waiuku District. She along with eight other members would decide who amongst the community would receive money granted to COGS by the government. This appointment lasted three years.

She was also part of the View Road School 50th reunion committee, was a member of a local maori culture group and was also part of a guiding reunion committee. Marion was also very passionate about bowls, and joined the Waiuku Bowling Club in her later life. She attended many competitions travelling the length of the North Island to attend. Marion was the president for a time, and a member of the committee, and still a patron today.



Churchill's shop on the corner of Queen and Bowen Street's Waiuku.

Too short but too good to miss



STORY BILL DEED

The story of West Franklin's aviatrix - **June Howden**

June Howden envied birds and their smooth flight. Seagulls especially impressed her with their ability to ride the winds, and alight on land or sea.

In her secret heart June longed to be a bird. She settled for the next best thing — as a pilot and in the latter years of World War II ferried Spitfires and other aircraft around the United Kingdom.

Daughter of Waiuku's famous doctor Charles Ernest Howden, June Constance Howden was born in Waiuku in 1918. Her mother was Grace, and her brother was Peter Howden, also a well-known doctor in Waiuku.

She was to become one of New Zealand's pioneer aviatrixes. It was no surprise that she was attracted to flying. When she was 12 and attending Waiuku Primary School, she watched a Captain Hewett in his Gipsy Moth "looping the loop" over Waiuku. She went up for a ride with him afterwards and was hooked.

Her secondary school education was at the Waikato Diocesan School where her interest in aviation was further stimulated. In 1935 when she was just 17, she won the NZ Herald Aviation Scholarship and qualified for her "A" licence.

June was head prefect at the Diocesan School and was well respected by her peers.

Her licence to fly was issued on 20 November 1936, and from then until the outbreak of war in 1939 she had clocked up about 50 hours' flying time.



At 23, she joined WAAF in New Zealand in 1941, but she found little or no prospect of women being allowed to fly. She was posted to Woodbourne near Blenheim as Airwoman of the Watch in the duty pilot's watch tower. The job included signalling by Aldis lamp to young pilots in Harvards preparing to land with their wheels still up.

It was after the young New Zealander heard that the Air Transport Auxiliary was using some women flyers in England. The ATA while not part of the RAF as such, was a very close partner. The ATA was used to deliver many types of aircraft around Britain to be used by pilots in war service. She wrote to the ATA and was allowed to join but this caused some controversy.

June made her way to England onboard the Australian Star via the Panama Canal and arrived in Liverpool in the height of the war on 27 November 1943.

During her time with the ATA, June flew 22 different types of aircraft. Spitfires were her favourites - "because it sort of fitted around you and you felt part of it". This abridged quotation years before was used at her funeral. She died on 8 June 2007. Other aircraft she delivered included the Harvard, Seafire (carrier-based Spitfire), Defiant, Reliant, Mustang, Hurricane, and Wildcat, some of which were new but some planes which came in for repair were classified NEA — not entirely

airworthy. ATA lost 173 pilots, including some of June's friends.

Her duty with the ATA ended in August 1945, with Japan's surrender.

During her time at Woodbourne was a trainee pilot Bob Gummer. He signed her autograph book but other than that June didn't meet him until after the war, and soon after they married.

But what about the controversy?

When she arrived in England, there was debate about June's height. Her certificate of service in the RNZAF gave her height at 1.6m (5 foot 3¾ inches), but in fact she was actually 1.58m (5 foot 2½ inches). The minimum height required for ATA service was 1.6m. Discussion perused, and both parties thought the discrepancy was "a bit funny", so no more was said on the issue.

However, June herself did not think it was funny when she was to pilot a Mustang. She was noted as saying "those Americans must be a long-legged breed". She had to pack all her logbooks and overnight bag behind her to allow her to gain to reach the control pedals of the plane.

So even the short can achieve great heights.

POST AS CLUB PILOT

By Our Christchurch Correspondent

IT is a far cry from bicycles to aeroplanes, but for Miss June Howden, of Botetown (and formerly of Waiuku), the manipulation of both machines seems to come with equal facility. After a three weeks' bicycle tour of the West Coast, South Island, she spent one day in Christchurch, then left to take up a position with the Waikato Aero Club at Rukuhia, an appointment which became effective on December 20.

Miss Howden had considerable experience during the war flying minor types of aircraft when serving in England with the Air Transport Auxiliary, an organization which ferried aeroplanes all over the country for the R.A.F., employing some men as pilots, but using mostly women. Therefore her appointment as timekeeper and second pilot to the Waikato Aero Club is a singularly apt one. It is thought that she is the first woman to be given the job in this country.

In an interview Miss Howden rather reluctantly admitted that of the various types of aircraft she had flown she preferred the Spitfire, but refused to elaborate on the grounds of "keeping a line." She is familiar with the Preactor, the type of aeroplane she will be flying at Rukuhia. While a pupil at the Waikato Diocesan School she won a competition conducted by the New Zealand Herald which offered flying instruction as the first prize, and sponsorship enough her instructor was Mr Harry Legg of the Waikato Aero Club. Miss Howden has been in Christchurch for the last seven or eight



Miss June Howden

months and concluded her stay in the South Island by touring the West Coast by bicycle with an English girl, Miss Annette Ewell, of Winchester. While they covered about 1000 miles on their machines, they received lifts for almost two-thirds of their journey, truck drivers, with typical Coast generosity, providing transport. Miss Ewell, who has been staying in Christchurch with Mr Robert and Lady Clark-Hall, leaves for England in January.



June outside her spitfire

Your PC Guy

Home and Business Computer Support

Sales • Service • Internet • Consultancy

Franklin wide onsite service.

FOR GREAT SERVICE CALL:

09 235 5300
021 111 4122

www.yourpcguy.co.nz
support@yourpcguy.co.nz

- Home computer support
- Business IT support
- WIFI setup for large home
- Computer repairs & upgrades
- Antivirus solutions
- Smart device setup
- Email setup
- Printer setup
- Home and office network

Just because you can do everything...



...doesn't mean you should

Newsletters | Social Media | Websites

We help you bring everything together so you can keep moving towards your big picture.

InDeed

www.indeedwecan.co.nz

WE CAN

June Howden in the cockpit of her favourite plane the Spitfire before she took off on a delivery trip of the aircraft to a pilot to fly it to a theatre of war.

DRIVETIME

HELPING WEST FRANKLIN DRIVERS
BE BETTER DRIVERS



SPONSORED BY DRIVETIME
www.drivetime.co.nz
Lets start driving today.
Phillip & Fiona Powell

Where the **rubber** meets the road

Winter is upon us, and the road surface will be more changeable now, so it is important to have the greatest amount of grip we can, always.

Tyres are the only part of our car that touches the road surface, so we need to keep them in the best order we can. You need to choose the tyres that are right for your vehicle and the driving you do. No tyre is perfect for all driving conditions. Talk to an expert about how and where you regularly drive so they can advise on the tyres you might need. Most tyre manufacturers recommend placing the tyres with the best grip at the rear, whether the car is front or rear wheel drive. Fitting tyres with less grip to the rear of a vehicle can result in over-steer and loss of control. It is best to replace your tyres in sets of four (or at least in pairs on the same axle) to maintain consistent handling.

Regularly check your tyres to make sure there is plenty of tread. The minimum legal depth is 1.5mm but the more tread you have the better the grip and the safer you will be.

Maintaining correct tyre pressure ensures balanced braking, maximum grip, and long tyre life.

Legally, you need to keep your tyres at the pressure recommended by the vehicle manufacturer.

Tyres naturally lose a little air pressure over time so it is worth checking them every month or so, for example whenever you're filling up.

Having the correct tyre pressure helps improve safety, handling, fuel efficiency and extends tyre life. Correct tyre pressure can help reduce fuel consumption by up to 4%.

Many modern cars are equipped with 'temporary-use' or space-saver spare tyres

that are smaller and lighter than standard spares. These tyres are usually about the width of a motorcycle tyre. They are safe to drive on if they are in good condition and you keep to the guidelines below - but their main use is to get you to a place where you can replace or repair the proper tyre.

Keep space-saver tyres inflated to the pressure indicated on the wheel label. Use space-saver tyres only in an emergency — they are not designed to be used over long distances.

Drive carefully and at no more than 80km/h when using a space-saver tyre. Your car's handling may be different when one is fitted.

Never fit more than one space-saver tyre to a vehicle.

Drive well

Phillip Powell

Professional Driver/Trainer/Assessor

New fire engine pride of station



STORY DAVID BLACK

Any resident of Waiuku will be familiar with the sound of the fire siren, calling to service, our Volunteer Fire Brigade. The brigade responds to more than just fires, it is well equipped and trained in other forms of rescue including motor vehicle accidents and even the occasional stranding of people or animals halfway up, or down a cliff, or stuck in a river. Most of the work, though, involves response to fires and motor vehicle accidents with the occasional medical emergency when an ambulance is not available.

Our brigade is fully volunteer but comes under the oversight of the New Zealand Fire service who provide training and equipment, including the two resident fire engines.

A new member of this fleet has recently arrived in Waiuku. Three weeks ago, the brigade took delivery of the latest appliance the service has to offer, a brand-new IVECO double cab Eurocargo truck fitted out by Fraser Fire in Wellington. Iveco is an Italian transport manufacturing com-

pany supplying the double cab and chassis units to specialised companies throughout the world, who fit them out to become modern fire appliances. Fraser Engineering is one of these, currently manufacturing up to 20 variants of fire engines supplied to brigades around New Zealand, Australia, and the Pacific Islands.

The Eurocargo is a usefully generic truck which can form the basis of several different fire appliances. In New Zealand, the Fire Service has standardised on using the double cab unit for volunteer brigades. These can take a crew of up to six, a minimum of four are required to leave the station when the siren sounds.

There are two such appliances based in Waiuku one being a standard pump engine, designated 571. The new appliance, number 577 (the last digit reflects the type) will be mainly used for motor vehicle accidents and is also capable of line rescue, at least to the extent of getting to and stabilising a patient, so other

services would then be called in for evacuation.

There is nothing particularly different about the new truck compared to previous generations, it is new and shiny but then the pride in the service also keeps the older engines looking much the same. The expected life of these vehicles in a brigade like Waiuku is 5 to 7 years - after that they would probably be reassigned to another brigade with lesser demand. The total life of the vehicles is as much as 25 years.

As well as being a traditional fire engine, meaning that the appliance can carry water as well as pump it from a hydrant and onto a fire, the shutter doors on the sides of the trucks provide immediate access to a variety of specialised equipment including self-contained breathing apparatus for up to four fire officers. There are also a variety of fire extinguishers needed for different types of fires. The older



engine, 571 has only the pump facilities it may be required as a backup when more water is required, or it may be sent first when fire is the only issue to be managed.

If the siren sounds a second time, (unless it's another emergency), that usually means that a second crew is called, and they would come out in the other engine to provide additional capacity. Whilst we are excited about this new arrival in town, we shouldn't ignore the wonderful service of what has gone before.

Waiuku Auto Electrical

MTA AUTO ELECTRICIANS

Keeping you moving!



BATTERY TOWN
CUSTOMER BATTERY SPECIALISTS

MTA ASSURED
MOTOR TRADE ASSOCIATION MEMBER

PHONE 235 8522

3 LEONARD STREET, WAIUKU

MURRAY KEMP

• AUTOS •

* A GRADE *
MECHANICAL REPAIRS

- Lubrication
- Engine Tuning
- Wheel Alignment
- WOF
- Welding

MTA ASSURED
MOTOR TRADE ASSOCIATION MEMBER

NEW TYRES



- Repairs • Retreads
- Fitting • Balancing

16 CONSTABLE ROAD, WAIUKU
PHONE 09 235 9246

EVINRUDE



SALES AND SERVICES OF NEW EVINRUDE ENGINES



- Latest diagnostic equipment for: Johnson, Mercury, Yamaha, Suzuki
- Quality Maintenance of Boat Motors, Trailers & Electrical

PH: ROSS 027 286 2332
OR 238 3033

156B Manukau Rd, Pukekohe
www.aquamarinenz.com

Ask about our pickup and delivery service.

AQUAMARINE SERVICES

AQUALECTRIX Pump & Electrical

Come and see us for all your Water Needs

- Bore Pumps
- Water Pumps
- Water Filters
- Water Tanks
- Water Testing
- Electrical



40 Crosbie Road • Pukekohe •

Ph 09 237 0050

FIND IT FAST

Your A-Z of Trades & Services



AGRICULTURE

Mike's Lifestyle Block Services
for all your paddock needs

Spraying: Boom & Spot
Mowing & Topping
Fertilising
Harrowing
Call Mike for a quote
021 331 019

DRAINLAYING

G.A. Howard Contracting

- Registered Drainlayer
- Commercial and Domestic
- Septic Tanks
- Water Tanks
- Truck and digger hire

Phone: 027 497 6003

Plumbers
Gasfitters and
Drainlayers Board

FOR HIRE

Outback

BATHROOMS
mobile bathroom | toilet facilities

Jeff & Lynette Millen
M: 027 44 88 666
E: southaukland@outbackbathrooms.co.nz
www.outbackbathrooms.co.nz

SEPTIC TANKS

WAIUKU WASTE DISPOSAL SUCKA1
SEPTIC TANK CLEANING

FOR ENQUIRIES:
PH 09 235 9066
info@waiukuwastedisposal.co.nz

CALL 0800 SUCKA1 | 0800 78252 1

BOOKKEEPING

Counties Bookkeeping Services
M. J. Fearon
B Comm

Accounts up to and including P&L and Balance sheet
Ph 0800 123 1633 or 021 123 1633
Email: fearonmj88@gmail.com

DRYCLEANING

Drycleaning service available.

ACTION OFFICE PRODUCTS DEPOT
Pukekohe | Waiuku
we love your work

09 957 0123 142 Manukau Rd, Pukekohe and 16 Bowen St, Waiuku

PAINTING

Ideal DECORATORS
PAINTING & DECORATING

Jeff: 027 2000 446
New Zealand Tradesman

SEPTIC TANKS

SEPTIC TAKEAWAYS

SEPTIC TANK CLEANING
0800 48 25 32
Mob: 027 476 1306

CARAVANS

COUNTIES CARAVAN RENTALS

Caravan Hire

- Accommodation needs
- Ideal extra bedroom

Phone Lynette & Jeff Millen
235 3500 Mobile 021 533 585

EARTHWORKS

Franklin Drainage & Earthworks

TRUCK & DIGGER HIRE

Mark Wheatley
Owner/Operator

296 Taurangaruru Rd, Waiuku
m.w.franklinde@gmail.com | 027 524 8767

PAINTING

NZ PAINTING & PLASTERING SERVICES LTD

Level 5 finishes • Wallpaper finishes
Fixing & stopping services • Commercial
Residential • Specialist coatings

m: 021 451 778 | e: nzpaint_plaster@xtra.co.nz
www.nzpaintingservices.co.nz

STORAGE

STORE IT ALL

All Sizes 021 293 6250
14 Hosking Place, Waiuku

CARPET CLEANING

FRANKLIN CARPET CLEANING LTD

Carpet & Upholstery Cleaning
Carolyn Foley

Mob: 021 886 475 Ph: 09 235 5014
Email: franklincarpetcleaning@xtra.co.nz

ELECTRICAL

PROGRESSIVE ELECTRICS
REGISTERED ELECTRICIANS

Free quotes, all work guaranteed • Experts in heat pumps and ventilation • new builds maintenance, renovations and commercial work
Call Brian 0220 616 614 or 09 235 0350
www.progressiveelectrics.co.nz

PAINTING

ACRAFLEC DAIRY WALL COATINGS

SUITABLE FOR NEW AND USED DAIRIES
Phone Bruce Cameron 0274 988 412

SURVEYORS

MADSEN LAWRIE LAND SURVEYORS

Contact David Lawrie or Ben Young
14 Hall St, Pukekohe
Ph 09 238 6369
Email: office@madsen-lawrie.co.nz
www.madsen-lawrie.co.nz

CARPETS & FLOORING

Local Family Business for over 35 years
Free Measure and Quote
PHONE: 235 3664
www.ciflooring.co.nz

Ci FLOORING
WE HAVE AN EYE FOR DETAIL
CARPET VINYL TIMBER LAMINATE

ELECTRICAL

Tom Kane Electrical Ltd

- Maintenance & Installations
- Domestic • Commercial • Rural

PH: 027 277 2346 • tkane@xtra.co.nz

PLUMBING

ALAN WILSON PLUMBING
PLUMBERS & DRAINLAYERS

CERTIFIED TRADESMEN OFFERING A RANGE OF SERVICES INCLUDING:
• DIGGER HIRE • GAS HOT WATER • CCTV/ DRAIN UNBLOCKING

CALL NOW 09 235 9066
EMAIL: service@alanwilsonplumbing.co.nz
WEB: www.alanwilsonplumbing.co.nz

TANK CLEANING

AQUA WASH

WATER TANK CLEANING
• Cleaning and repairs

WATERBLASTING
• House washing
Free Quotes
Phone Grant 027 747 3880

CARPETS & FLOORING

WE'RE LOCAL AND WE COME TO YOU

Why Harrisons?
• It's easy, we're mobile, so we come to you
• Huge range of the latest carpets, vinyls, vinyl planking and laminate to suit all decors and budgets
• Best price guarantee*
• Get Fly Buys with every purchase
• Finance options available (Q card, Gem visa)

FlyBuys

harrisons carpet
harrisonscarpet.co.nz
0800 279 009

ELECTRICAL

DOMESTIC COMMERCIAL INDUSTRIAL
MAXIMUM ELECTRICAL LIMITED

Call Simon for a Free Quote
0508 772 757
www.maximumelectrical.co.nz

PUMPS

GUBB PUMP & WELL SERVICES
DESIGN, SUPPLY, INSTALL

Pump Servicing • Bore Servicing • Water filtration
Plumbing supplies • Builders mix and cement • Sand
AFTER HOURS AVAILABLE

14 Constable Road, Waiuku 09 235 8268

TOILET HIRE

WAIUKU PORTABLE TOILET HIRE

0800 58 25 32
waiukuportabletoilets@gmail.com

EQUIPMENT / MECHANICS

Hall & Hyland Machinery Ltd.
P.O. Box 225, Waiuku • 13 Martyn Street, Waiuku

Ph: 235 8748 • Mobile 027 496 1108

Hydraulink
FLUID CONNECTORS

ROOFING

Classic Roofing Solutions

New COLORSTEEL roofs and Re-roofing • Repairs • Senior Discount
Nigel Wagstaff - 09 232 8287
Over 37 years roofing experience

MECHANICAL REPAIRS

Specialists in vehicle servicing

027 493 1223
Ph: (09) 235 2323 • 5 Leonard St, Waiuku
mobilemechanicalrepairs.nz

CONCRETE

ACTUAL CONCRETE

For all your concrete needs
JOHN 021 501 438

FOR HIRE

JR Coachlines
AIRPORT SHUTTLE. CHARTERS. TOURS.

James Collie
Owner/Operator

027 274 5201
jrcoachlines@gmail.com

Social Services Expo
Pukekohe War Memorial Town Hall
10am to 6pm on Wednesday 26 May
Social service organisations wishing to take part should register by 7 May.
www.communitynetworksfranklin.nz
or FB: Community Networks Franklin.
Registrations can also be submitted at https://forms.gle/DQk2kUErct-mGG6U7.
More information, email Jan Wallace
jan.wallace@xtra.co.nz
or 027 452 1366.

Puzzle Answers

ACROSS 1 Potomac. 5 swallow. 9 attention. 10 angel. 11 Holst. 12 cicatrice. 14 creme de la creme. 17 dig in one's heels. 21 caballero. 23 enter. 25 tally. 25 snakebite. 26 saddled. 27 eat lead.
DOWN 1 peachy. 2 titular. 3 minuteman. 4 coincidence. 5 son. 6 adapt. 7 lignite. 8 wall-eyed.

2	7	8	4	6	1	3	9	5
6	1	5	2	3	9	4	7	8
9	4	3	5	7	8	1	2	6
5	8	9	1	4	6	7	3	2
7	6	2	9	8	3	5	4	1
4	3	1	7	2	5	6	8	9
3	9	4	6	5	2	8	1	7
8	2	6	3	1	7	9	5	4
1	5	7	8	9	4	2	6	3



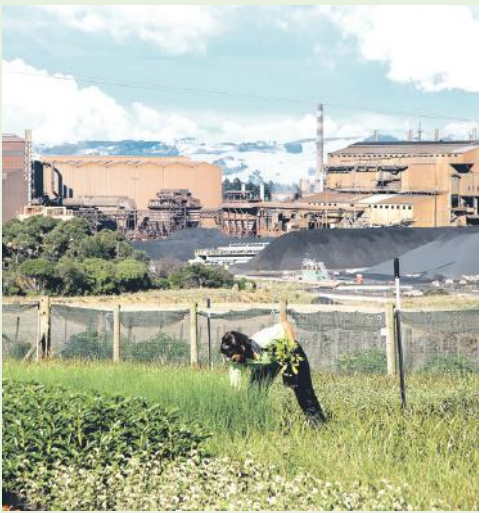
Air concerns

New Zealand Steel

While New Zealand Steel monitor closely all its operations to minimise any effects on the environment, by far the biggest percentage of the company's capital investment in environmental control is in the improvement of the quality of its emissions into the atmosphere.

This month, West Franklin Breeze takes a close look at how this is done, and the lengths the company goes to achieve quality of air.

Keeping it clean



The steel mill operations extend across 190 hectares and are surrounded by a green belt of 360 hectares of farm land which has a lot of stream riparian and boundary planting. This land supports livestock farming and cropping activities.

New Zealand Steel is a supporting organisation of the nationwide Trees for Survival Charitable Trust, which links school children to growing and planting native trees.

NZS is committed to a 12 percent reduction in their greenhouse gas emissions from the iron and steel making facilities by 2030.

Steel is an essential ingredient in the transition to a low carbon economy, as it takes over 140 tonnes of steel to build one new wind turbine.

NZ Steel's consent application presents a comprehensive assessment of discharges to air. The consent application for air discharge was lodged with Auckland Council in April 2021.

If you want more information about the consent application or more detail about NZS air discharges, please visit www.nzsteel.co.nz



The most visible discharge from the giant stacks is steam from the ironmaking plant. On clear, still days the dense white plumes, which are not harmful to people or the environment, can be seen across the broad expanse of the Manukau Harbour.

Throughout the plant are special processes for managing other emissions such as dust and chemical fumes, and all gasses are cleaned before discharge. When the steel mill is working to maximum capacity more than three million cubic metres of waste gas is cleaned per hour.

The amount of dust collected in air pollution control equipment and thereby prevented from entering the atmosphere is estimated to be between five and ten tonnes per hour.

Nothing but clear skies



New Zealand Steel has been trialling a new process to suppress the fume when hot metal is tipped down the tipping banks on site (this is called iron plating).

When iron plating occurs, there is visible brown or orange fume. While the fume is not harmful it is not the most attractive sight.

The trials have been a great success, resulting in the near complete elimination of all fume. The team is now working to provide a permanent facility at the tipping banks.

Monitoring the situation

NZS maintains a continuous monitoring process for water and air quality.

All monitoring information is presented to Auckland Council and a local Environmental Committee established by the company in the 1970s, with representatives from local iwi, local boards and Auckland Council.



In 2003, New Zealand Steel became certified to the international standard ISO 14001 for environmental management system. This provided a structured process on compliance to which the company remains totally committed. With external audits being conducted annually.

The company has ambient air-monitoring equipment in the local area (particularly downwind of their operations) to continuously assess air quality. Hourly monitoring results are reported to the Environment and Operation teams via text message when dust levels are higher than normal to prompt any action required.

The regular monitoring programme includes measuring suspended particles in the air, and measuring particle matter and chemicals in stack emissions.

This observes trends and patterns in ambient air quality, makes sure the company complies with its consent conditions, obtains data about background air pollutants, and confirms that air pollution control equipment is cleaning air emissions effectively.

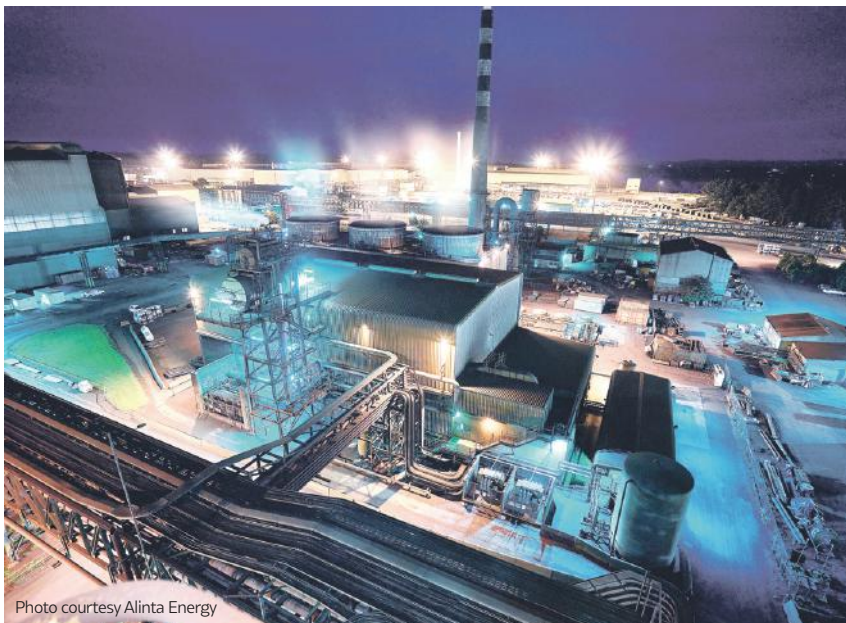


Photo courtesy Alinta Energy

Like most large industrial enterprises, the steel making activities result in discharges to the air

Powering up One of the innovative ways of managing hot gas emissions has been through the development and operation of a cogeneration plant. This plant uses bi-product gases and waste heat from the ironmaking plant to generate high pressure steam which then produces around 60 percent of the site's total electricity requirements.

NZ Steel generates enough electricity per year to supply about 60,000 houses.

This significantly reduces the amount of electricity New Zealand Steel takes from the national grid, thereby reducing the need to burn fossil fuels in power stations.

Always thinking ahead

NZS is in the process of renewing their Resource Consent Application. Their application has involved further extensive analysis based on current national and international air quality standards for the protection of human health and ecology.