

Camp Dodge Joint Maneuver Training Center Planner's Guide

Version 4 Dated May 2023



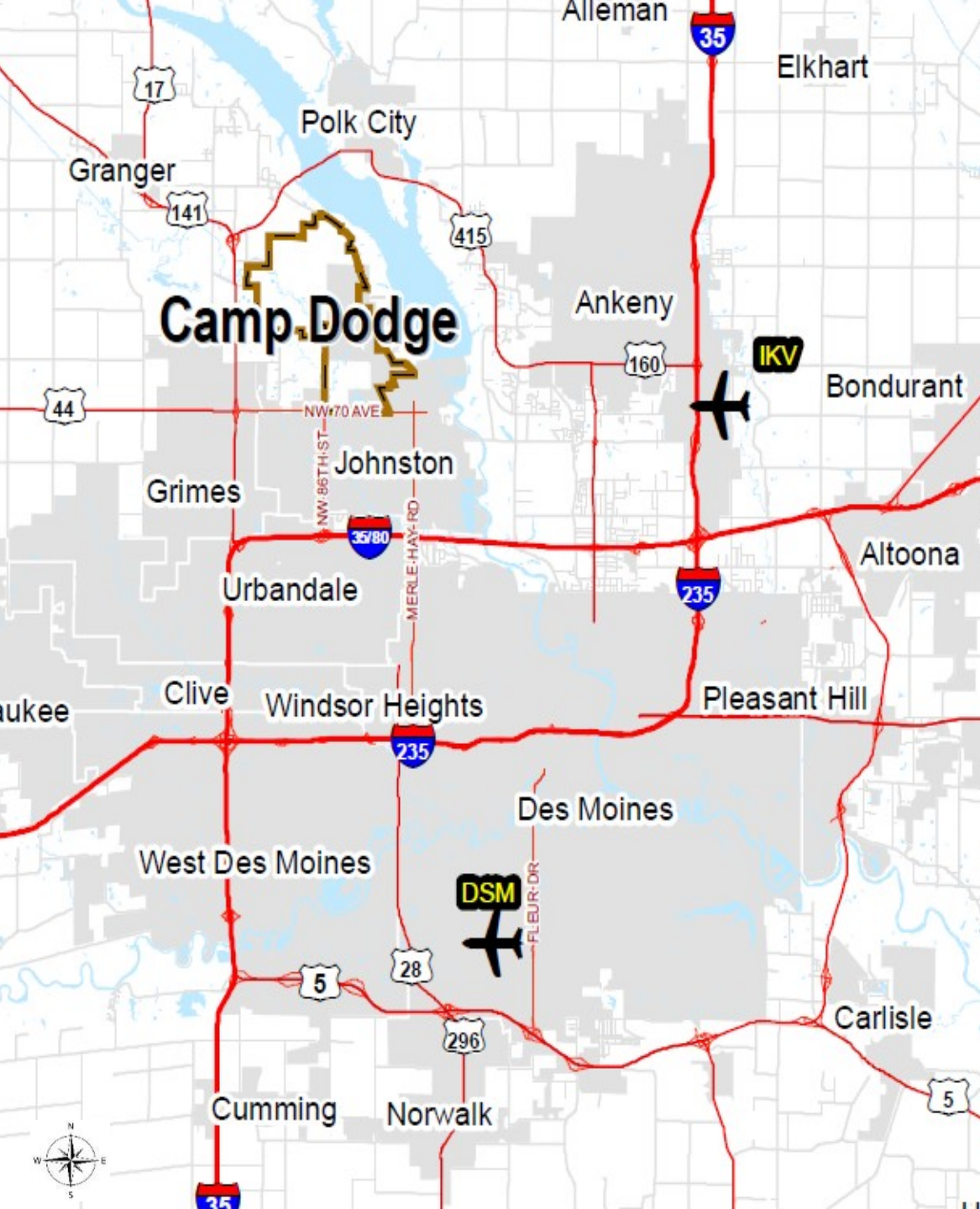
Distribution authorized to US Government agencies and their contractors for administrative or operational use; 01OCT2022. Other requests for this document shall be referred to Iowa Army National Guard Training Center, 7105 NW 70th Avenue, Johnston, IA 50131-1824.

Controlled by: NGIA-TCU-
OPS

Category(ies): OPSEC

Distribution/Dissemination Controls: FEDCON

POC: FUOPS 515-252-4690



*Welcome to
Camp Dodge
Joint
Maneuver
Training
Center*

Table of Contents

Slide	Building	Purpose	Slide	Building	Purpose
5-11	S70 Armory	Drill Floors, Dining Facilities, and Classrooms	35	PRD01-PRD05	Parade Fields, ACFT Test and Training Areas
12	S60 Armory	Drill Floors, Dining Facilities, and Classrooms	36-37	PT-01	Wellness Center and Lodging Office
13-14	S29 Armory	Drill Floors, Dining Facilities, and Classrooms	38	MWR PT Track Trl-01	ACFT Track
15-18	S52/S53/S54/S55	Barracks	39	PT07 ACFT Field House	ACFT Test Site
19	S50/S51	Individual Rooms for E7+ (training non-chargeable)	40-41	PT08N/S-PT09N/S	ACFT Test and Training Areas
20	S58	Orderly Room	42	A17/A22/A63 and B57/B58	Event Facilities
21-22	B5-B35	Barracks	43-44	A17	Dodge House
23-24	DF1-DF5	Dining Facilities (DF or DFAC) (Stand Alone)	45-47	A22	Pool Pavilion Complex
25	C2-C4	Orderly and Supply Rooms	48	A63	Chapel
26	B55 Building 3495	Computer Lab	49	B57	Recreational Hall
27	B65 Building 3546	Classroom (No Internet)	50	B58	Theater
28	M9/M10	Classrooms	51	MWR Park	Inter Urban Park (Seasonal)
29	W34 N/S	Classrooms	52	Museum	Gold Star Military Museum
30-32	SMP 400; 24E/24W S56/S57; 33E/33W	Motor Pools	53	W6	Facilities Management Team Issue and Draw
33-34	S42	Fuel Point and Secondary Containment Parking for Fuel Assets			

Table of Contents

Slide	Range	Purpose	Slide	Training Area	Purpose
54	Range and Training Area Overview		67	RGT-14	Grenade Launcher
55	RG Mobile MOUT	Low-level collective training for specific task – 24 connex containers	68	RGT-17	Land Navigation Course
56	RGS-06/07/11	Auto Field Fire and Classroom 3259	69	RGT-22	MOUT Buildings
57	RGS-12/13	BSC10/25M Range and Classroom 3257/3209	70-71	RGT-23	Confidence Course
58	RGS-14	CPQC Auto Range and Classroom 3203	72	RGT-25	Gas Chamber
59	RGS-16	Automated Record Fire Range	73-74	RGT-27	Leadership Reaction Course
60	RG WPNS CLN	Weapons Cleaning Building 2196	75	RGT-28	Live Fire Breach Facility
61	RGS-17	Hand Grenade Qualification	76	RGT-50-51	Shoot House and After Actions Review (AAR) Building 8510
62	RGS-18	Rappel Training Area	77	RGT-80	Breach Training Area
63	RGS-92	Wheeled Vehicle Driver Course	78-79	Training Areas	Training Areas
64	RGS-97	Forward Operating Base	80	Contact Information	
65	RGS-98	Urban Assault Course	81-83	Historical Photos	
66	RGS-99	Tactical Training Base (LSA)			

*All items must be scheduled through the Range Facility Management Support System (RFMSS)
If you need access, contact RFMSS at 515-252-4576*

S70 Freedom Center - Exterior



S70 Freedom Center is near the Main Gate. It hosts permanent and transient tenants.





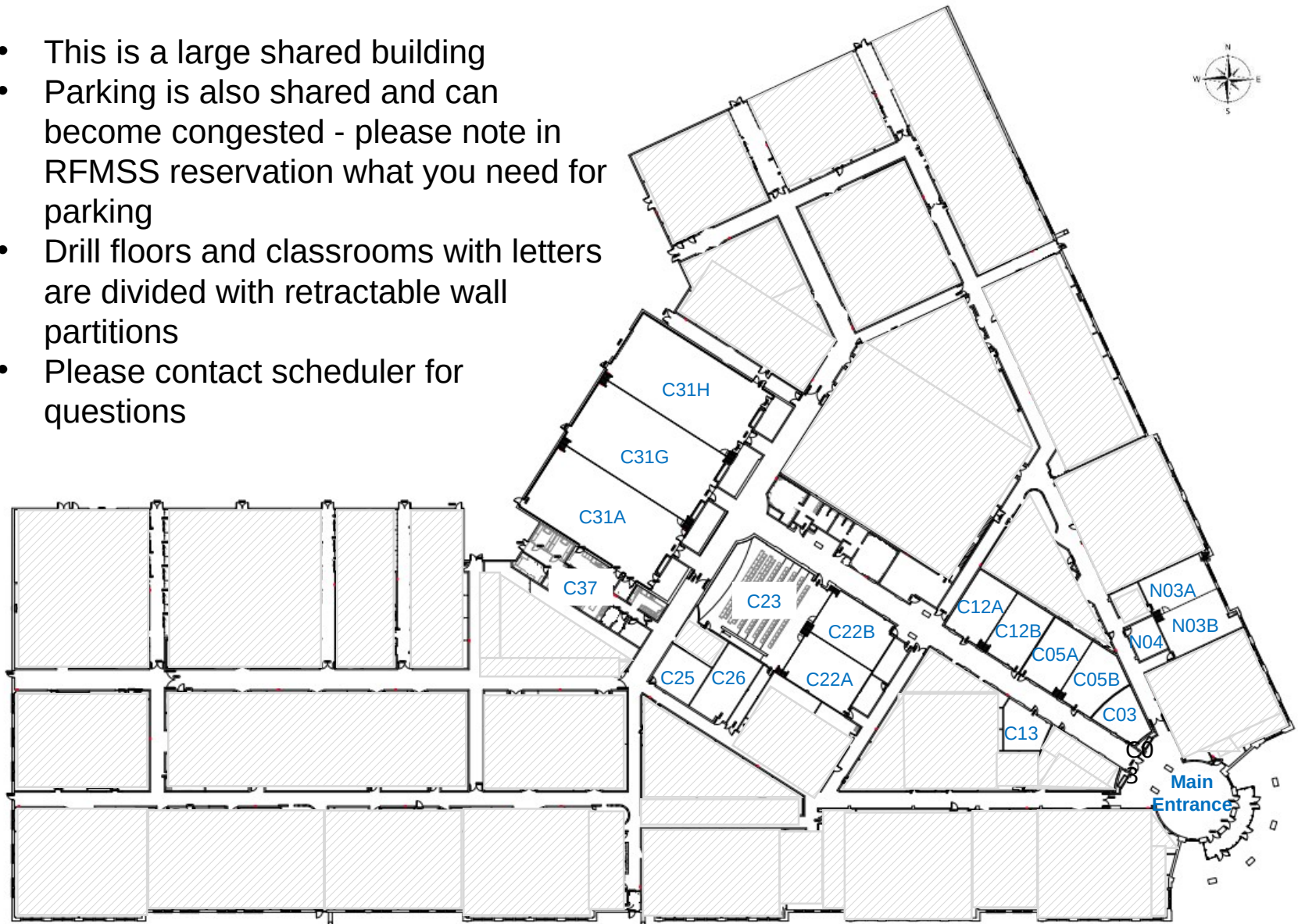
S70 Freedom Center – BLDG 1285

Rooms in S70	Dimension	Ceiling	Primary Function	Supported Capacity	Max Capacity	AV Equipment
N03A	25'x18'	10'	Computer/DL Classroom	16	45	N/A
N03B	25'x22'	10'	Computer/DL Classroom	18	53	Proxima, 15 Computers
N04	18'x15'	10'	Classroom	8	18	N/A
C03	25'x16'	10'	Classroom	12	31	N/A
C05A	20'x33'	10'	Classroom	28	49	AV Cart/Proxima
C05B	22'x33'	10'	Classroom	28	49	AV Cart/Proxima
C12A	33'x21'	10'	Classroom	28	49	AV Cart/Proxima
C12B	33'x31'	10'	Classroom	28	49	AV Cart/Proxima
C13	22'x20'	10'	Classroom	16	29	AV Cart /Proxima
C22A	26'x38'	10'	Classroom	40	67	AV Cart/Proxima
C22B	26'x38'	10'	Classroom	40	64	AV Cart/Proxima
C23	50'x53'	10'-12'	Classroom	121	175	AV Cart/Proxima
C25	22'x23'	10'	Classroom	18	34	N/A
C26	20'x36'	10'	Classroom	28	49	N/A
C31A	38'x66'	18'	Drill Floor	53 Tables/240 Chairs	190 w/tables 420 w/chairs only 590 standing only	N/A
C31G	35'x66'	18'	Drill Floor			N/A
C31H	25'x66'	18'	Drill Floor			Av Cart/Proxima/Screen
C37	15'x10'	10'	Dining Facility	N/A	N/A	N/A

All Classrooms and Drill Floors in S70 will be listed under CR S70, and then the room number in RFMSS, Dining Facility is DF S70-C37

S70 Freedom Center – BLDG 1285

- This is a large shared building
- Parking is also shared and can become congested - please note in RFMSS reservation what you need for parking
- Drill floors and classrooms with letters are divided with retractable wall partitions
- Please contact scheduler for questions

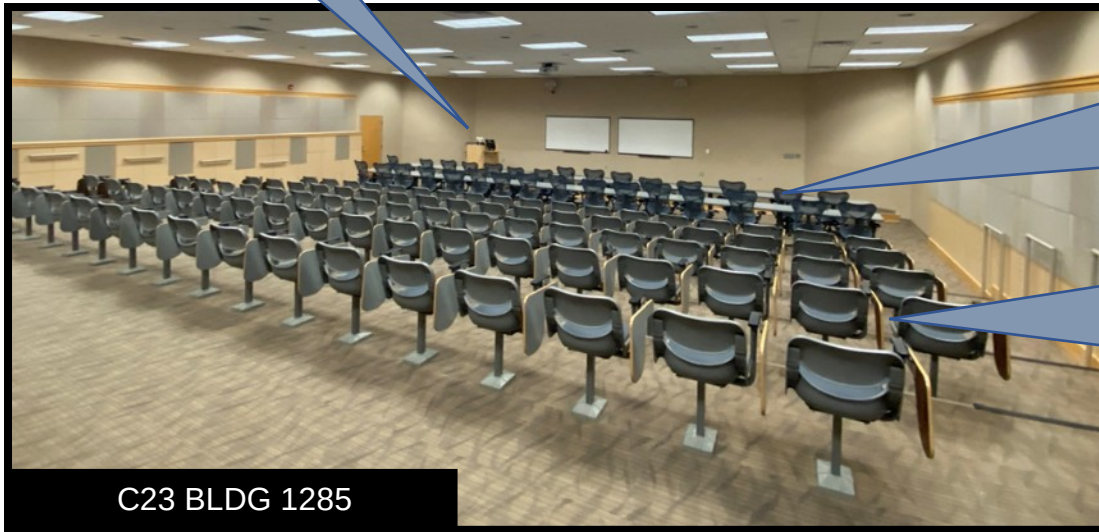


S70 C23 Enhanced Classroom - BLDG 1285



C23 Enhanced Classroom features

- Tiered seating
- 32 rolling chairs with table desk space in the front two rows
- 89 chairs with flip desk
- 2 white boards and 1 overhead projector
- DVD/VHS player with remote, Christie Projector with remote
- Wireless microphone and table microphones



C23 BLDG 1285



Table Ports/Outlets



Chair Ports/Outlets

S70 Classrooms – BLDG 1285



C22B Classroom front and back view

Classroom features

- Adjacent classrooms reserved can be combined by retracting wall partitions
- Multiple sizes and capabilities to fit your needs
- Most rooms have an audio-visual cart and Proxima



N03 A/B Computer Lab

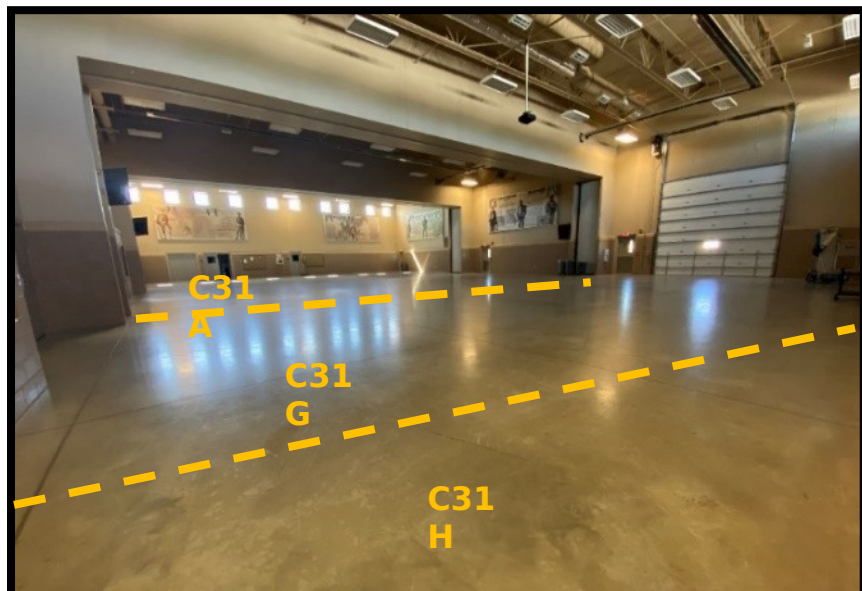


12A Classroom



12B Classroom

S70 Drill Floors – BLDG 1285



Drill floor view from NE corner

Drill Floors C31 A/G/H

- Can be reserved individually and divided
 - C31A South adjacent to kitchen
 - C31G Middle floor
 - C31H North side
- Can be reserved all together and combined by retracting wall partitions
- C37 Dining Facility (Kitchen) is located on the South side adjacent to drill floor C31A and is the kitchen area only no seating, recommend reserving C31A with kitchen



Walk-in refrigeration



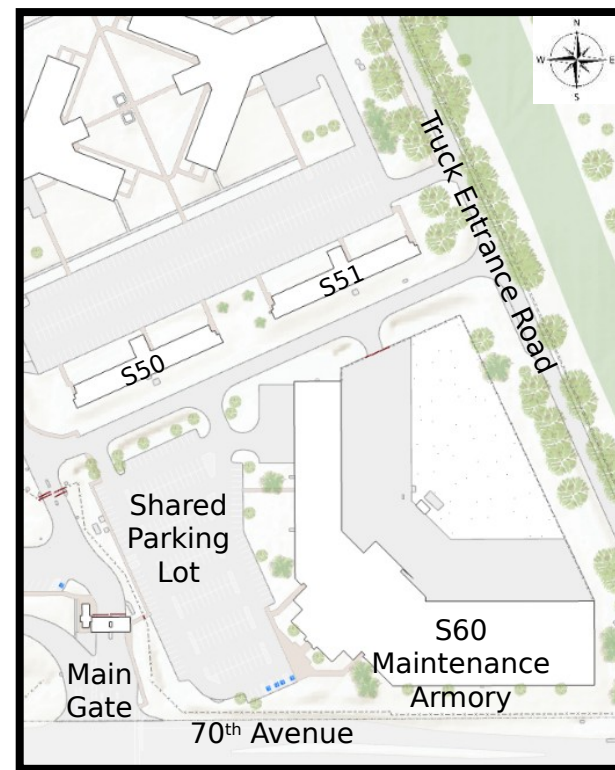
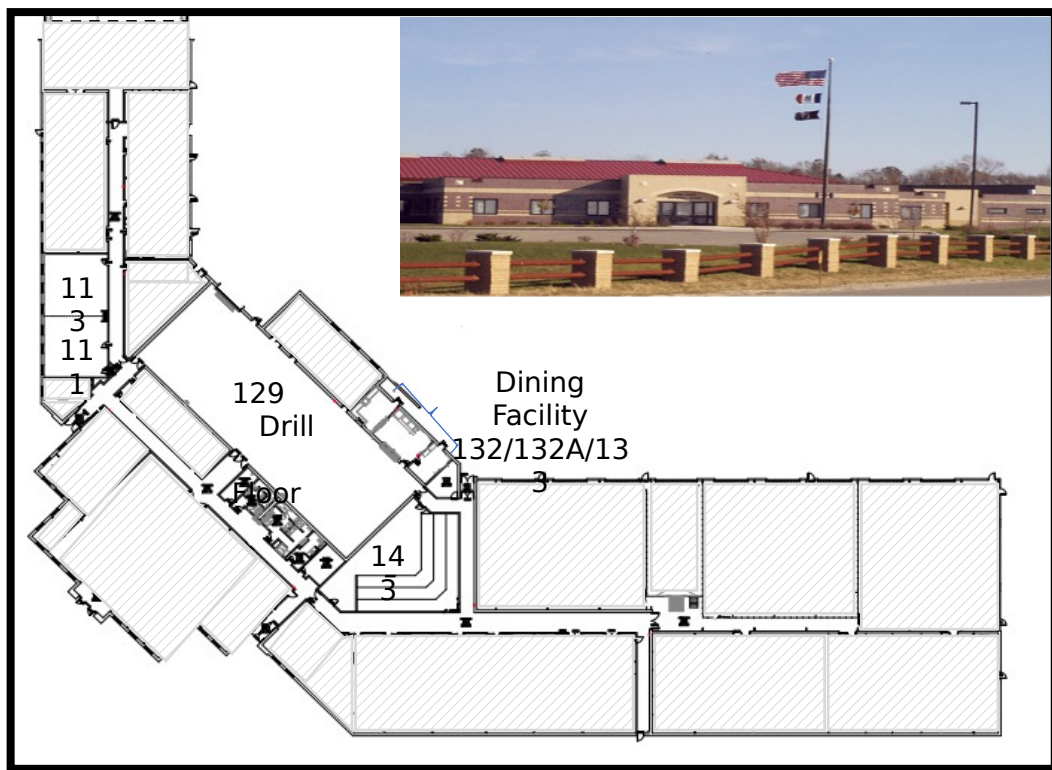
C37 Dining Facility



Padded metal folding chairs



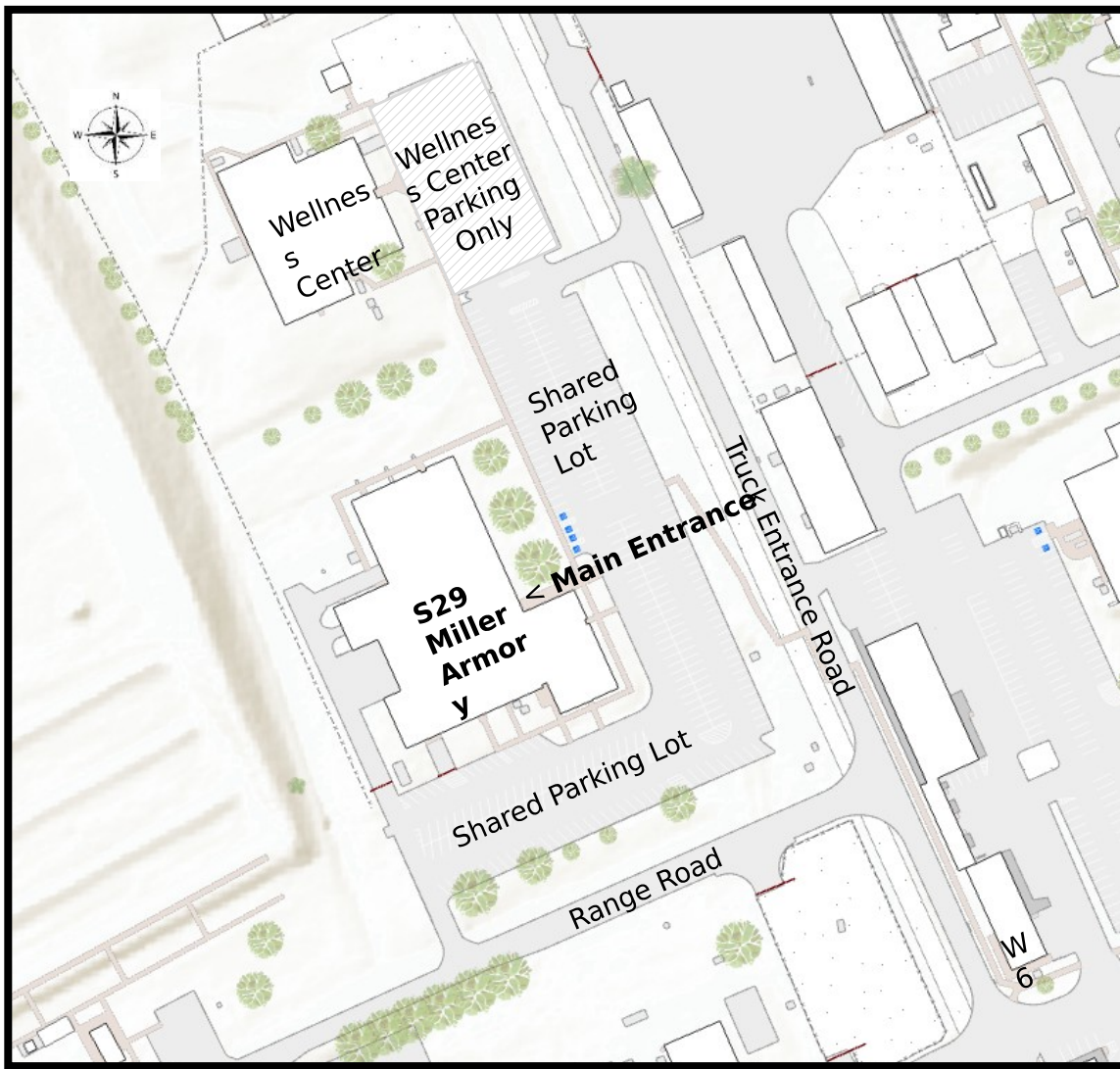
S60 Maintenance Armory – BLDG 1350



Room	Dimension	Primary Function	Supported Capacity	Max Capacity	AV Equip
111	18' x 33'	Classroom	12	19	N/A
113	18' x 33'	Classroom	12	19	N/A
129	52' x 145'	Drill Floor	300	500 w/Tables 1070 w/Chairs Only 1500 Standing	N/A
132/132A/133		Dining Facility			N/A
143	24' x 39'	Classroom	60	64	TV as Computer Screen

All Classrooms in S60 will be listed under CR S60, and then the room number in RFMSS, Dining Facility is DF S60-132/132A/133

S29 Miller Armory – BLDG 3375



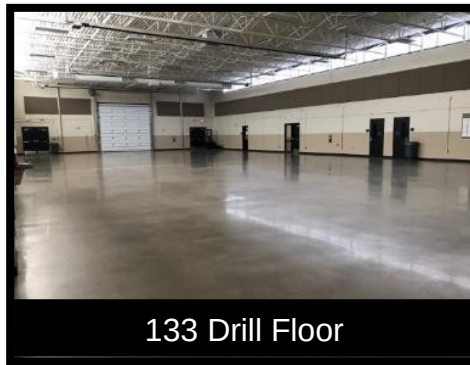
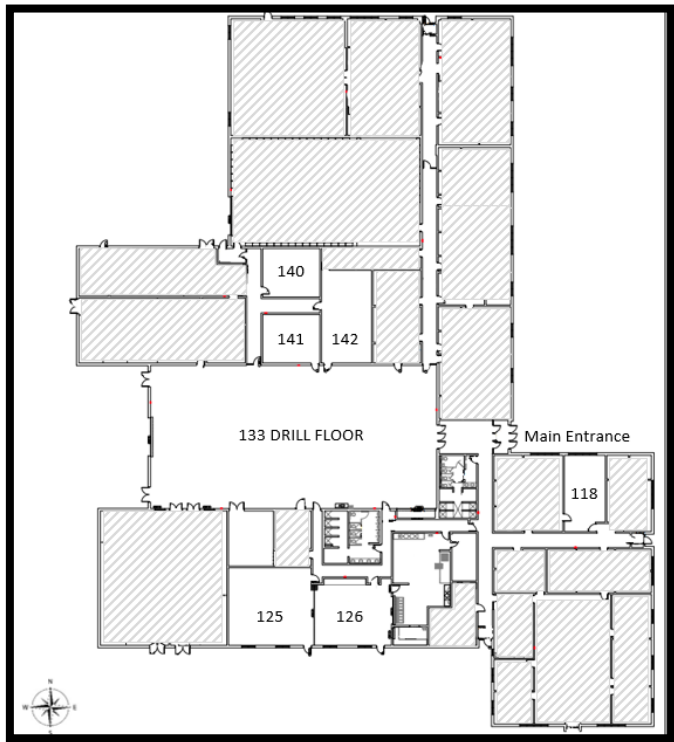
S29 Miller Armory

- This is a large shared building
- Parking is also shared and can become congested - please note in RFMSS reservation what your parking requirements are
- Please contact scheduler for questions



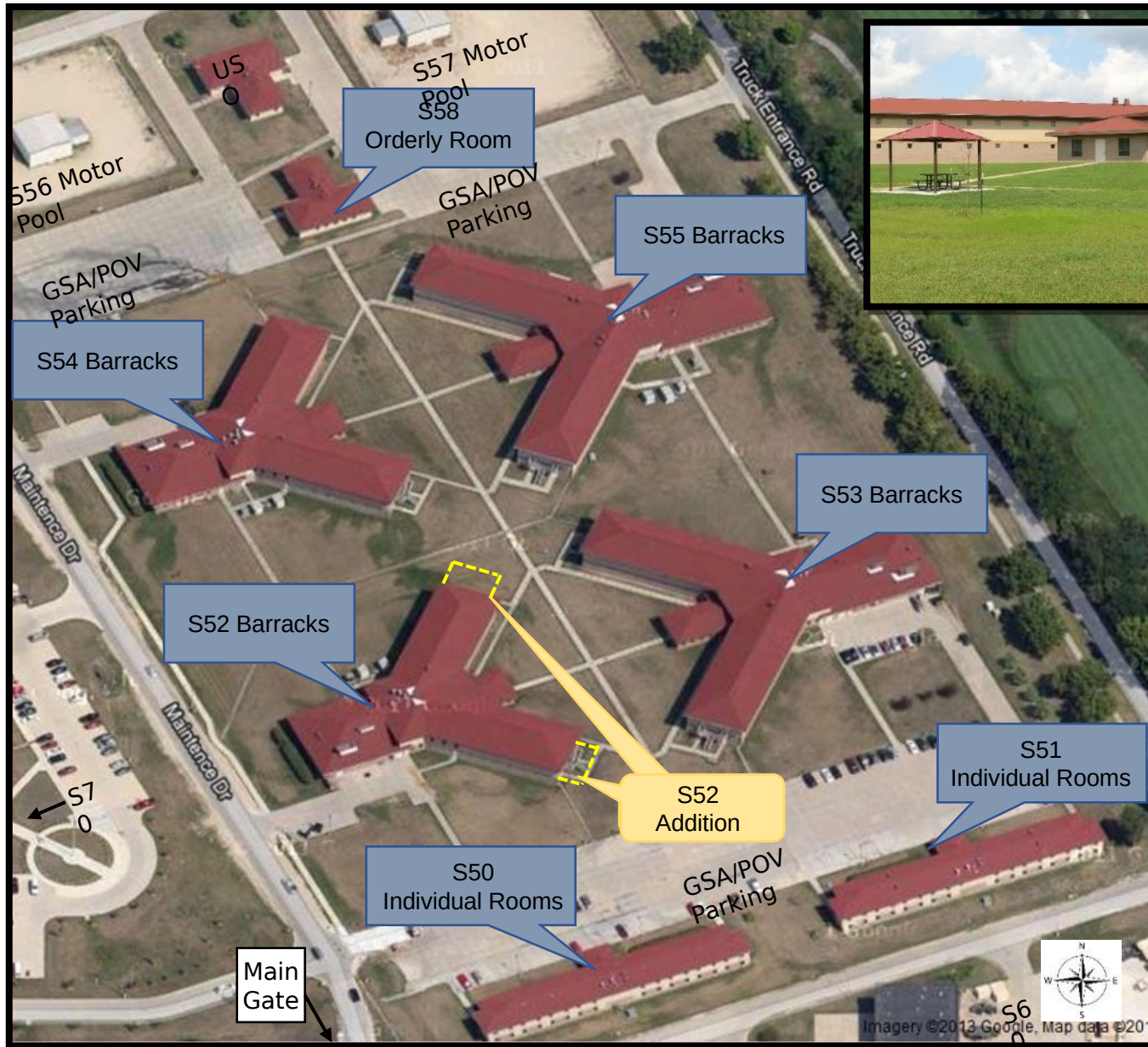
All Classrooms in S29 will be listed under CR S29, and then the room number in RFMSS, Dining Facility is DF S29-127

S29 Miller Armory – BLDG 3375



Room	Dimension	Ceiling	Primary Function	Supported Capacity	Max Capacity	AV Equipment
118	14' x 21'	8'	Conference Room	12	24	NA
125	33' x 36'	8'	Dining/Classroom	46	77	Retracting Screen
126	28' x 30'	8'	Dining/Classroom	42	59	NA
127		8'	Dining Facility			NA
133	60' x 120'	15'	Drill Floor	300	480	NA
140/141	20' x 23'	8'	Classroom	16	32	NA
142	21' x 39'	8'	Classroom	30	54	NA

S-Series Barracks



S52 / S54 Barracks – BLDGS 1324 / 1334



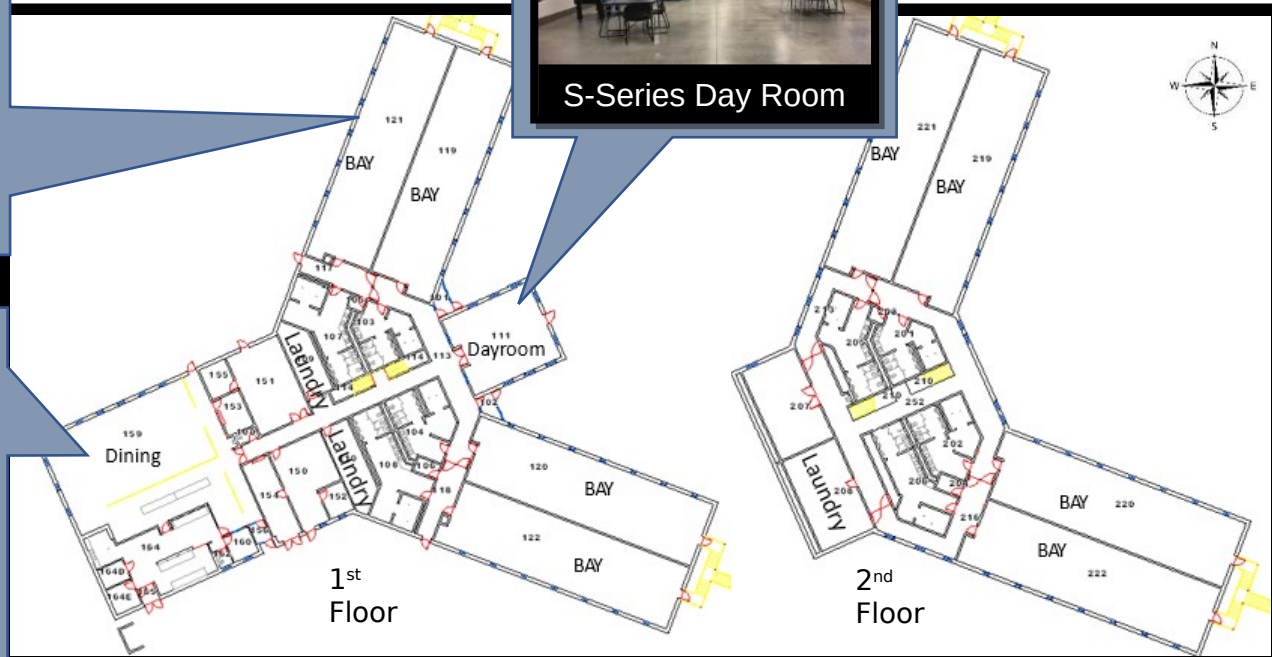
S-Series Open Bay



S-Series Day Room



S-Series Dining Facility

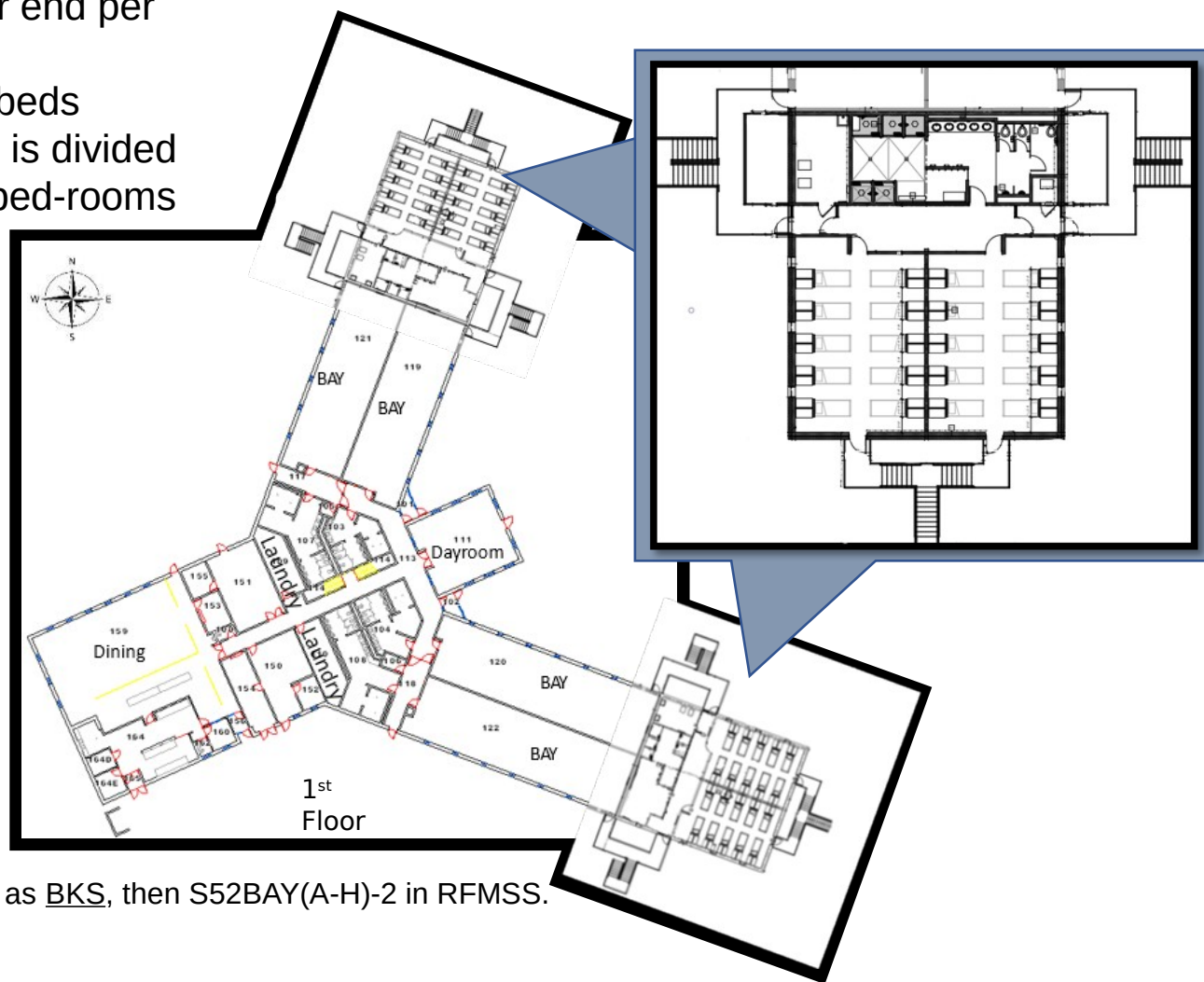


Room	Dimension	Primary Function	Supported Capacity	Max Capacity	AV Equip
8 Bays Billeting	24' x 90'	Billeting	43 each bay	N/A	N/A
1 Dining Facility	63' x 45'	Dining Facility	128	205	N/A
1 Orderly Room	31' x 20'	Orderly Operations	N/A	N/A	N/A
1 Supply Room	31' x 10'	Supply	N/A	N/A	N/A
1 Day Room	30' x 34'	MWR	N/A	N/A	TV/Vending

All rooms for S-Series will be listed under BKS, and then S52 or S54 in RFMSS, followed by BAY for bays, OR for orderly rooms, or DF for dining facilities. . EX: BKS S54BAYA or BKS S52 OR

S52 Barracks Addition – BLDG 1324

- The additions to S52 is an additional 20 beds per end per floor
- Total of 80 additional beds
- Each 20-person room is divided into two separate 10 bed-rooms with a shared latrine
- The additions are accessible by exterior entrances only and cannot be accessed through the bays



All S52 bay additions are listed as BKS, then S52BAY(A-H)-2 in RFMSS.
EX: BKS S52BAYA-2

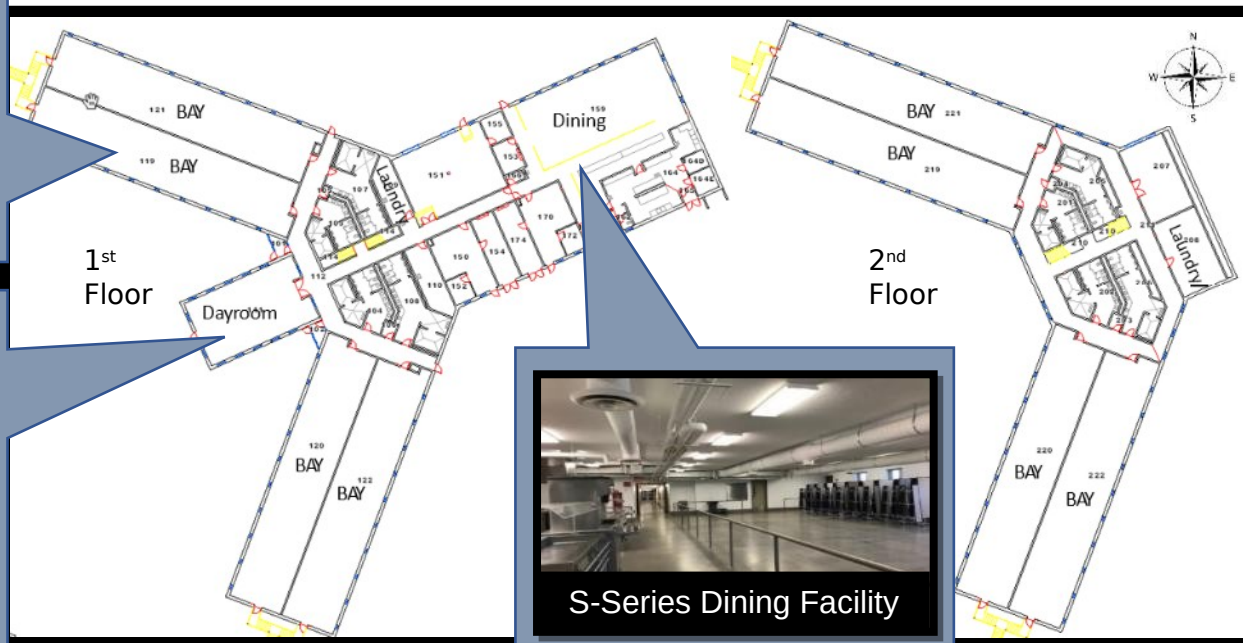
S53 / S55 Barracks – BLDGS 1375 / 1385



S-Series Open Bay



S-Series Day Room



S-Series Dining Facility

Room	Dimension	Primary Function	Supported Capacity	Max Capacity	AV Equip
8 Bays Billeting	24' x 90'	Billeting	60 each bay	N/A	N/A
1 Dining Facility	73' x 24'	Dining Facility	160	231	N/A
1 Orderly Room	31' x 20'	Orderly Operations	N/A	N/A	N/A
1 Supply Room	31' x 10'	Supply	N/A	N/A	N/A
1 Day Room	30' x 38'	MWR	N/A	N/A	TV/Vending

All rooms for S-Series will be listed under BKS, and then S53 or S55 in RFMSS, followed by BAY for bays, OR for orderly rooms, or DE for dining facilities. EX: BKS S55BAYA or BKS S55 DF

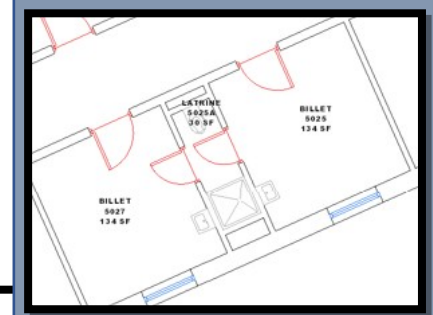
S50 / S51 Individual Room – BLDGS 1350 / 1365



Laundry Room



Day Room

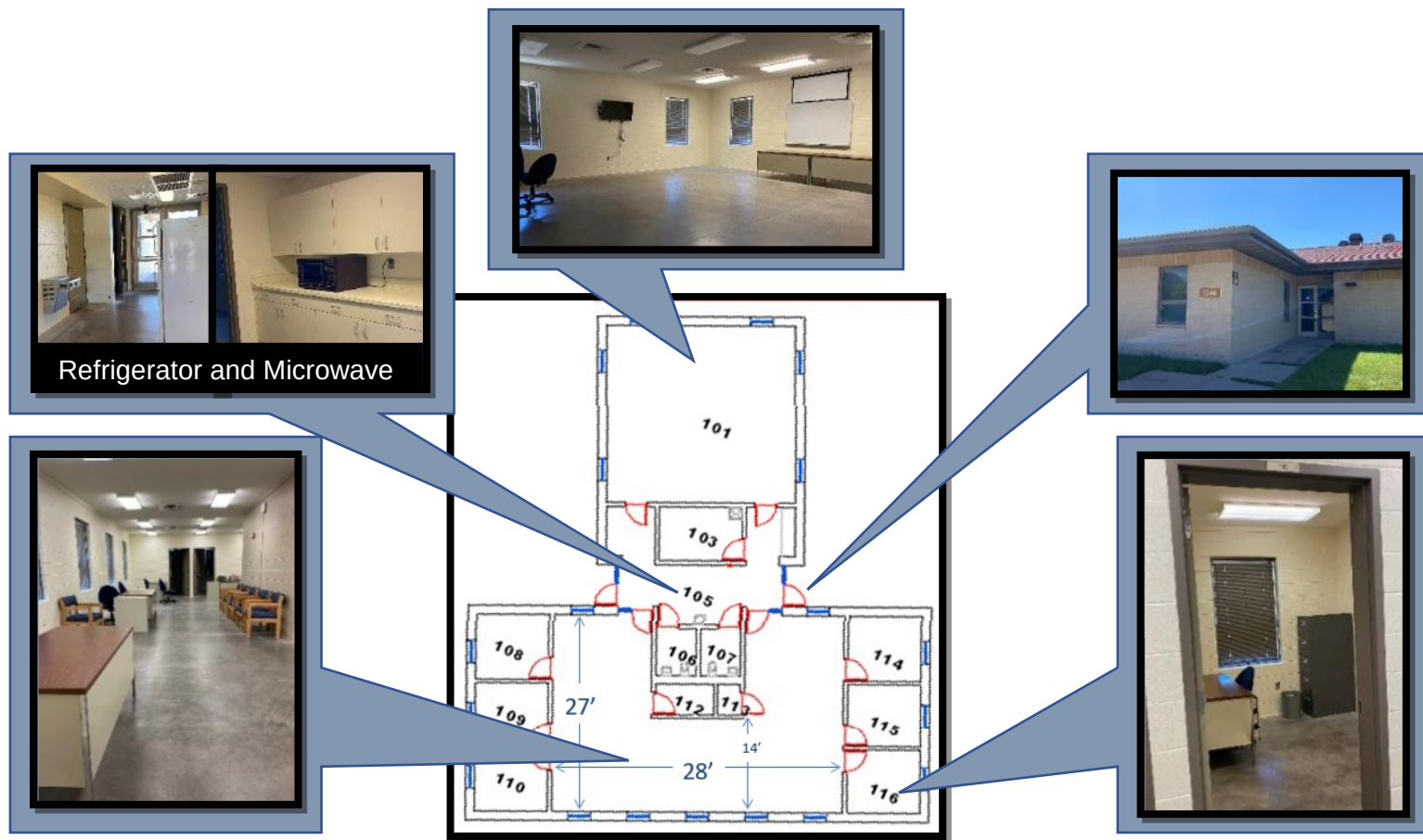


Individual Rooms are
for E7 and above



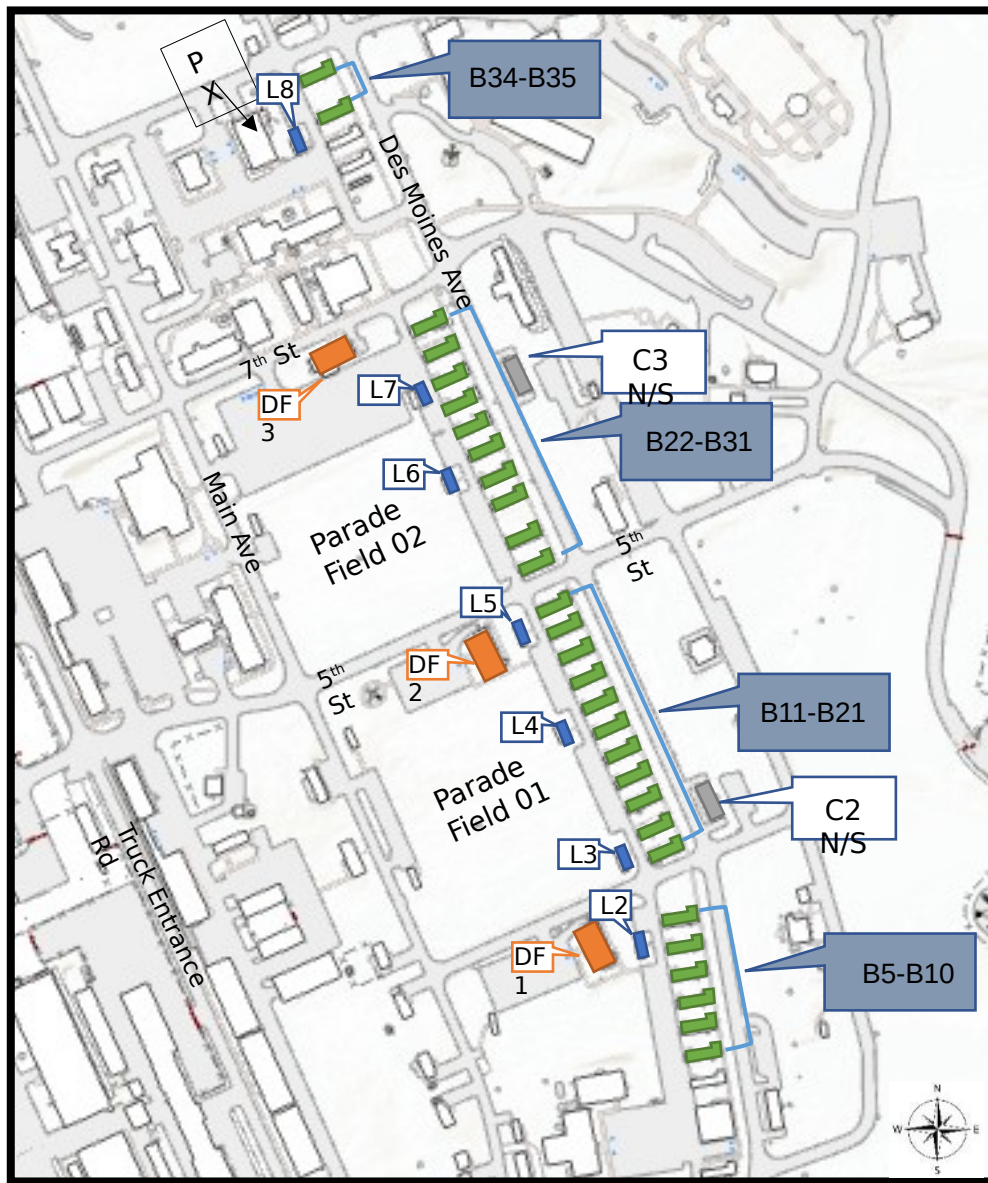
All Individual rooms in S50 / S51 will be listed under IRM, and then S50 or S51 in RFMSS, followed by a set of room numbers that share a latrine. EX: IRM 5029/5030 S50





S58 Orderly Room – BLDG 1346



Room(s)	SQ FT	Dimension	Ceiling	Primary Function	Max Capacity	AV Equip
101	724	28' x 24'	9'6"	Staff/Conference Room	24	NA
111	1040	27' x 20'	9'6"	Large Staff Office	35	NA
108,109,110/114,115,116	100	9' x 11'	9'6"	Individual Offices	1 each	NA

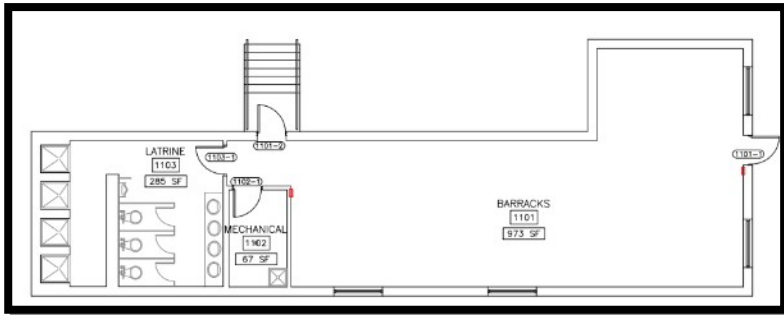
B-Series Barracks



-  Barracks
-  Latrine/Shower/Laundry
-  Dining Facility
-  Orderly/Supply Room

All B-Series Barracks will be listed under BKS followed by respective number in RFMSS.
EX: BKS B38 BLDG4563

B-Series Barracks



B-Series Barracks:

B5-B31, B34-35

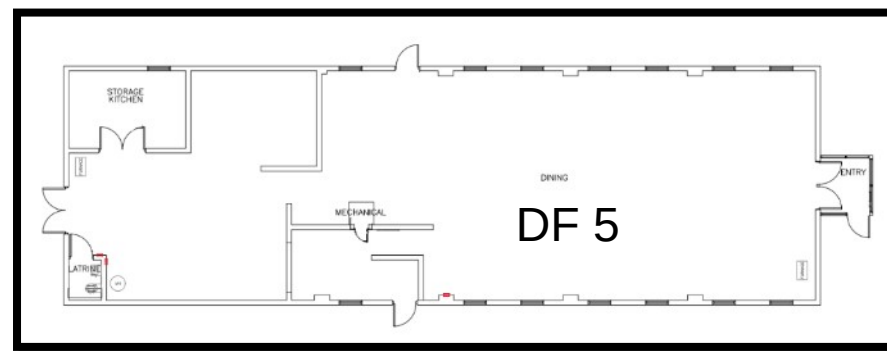
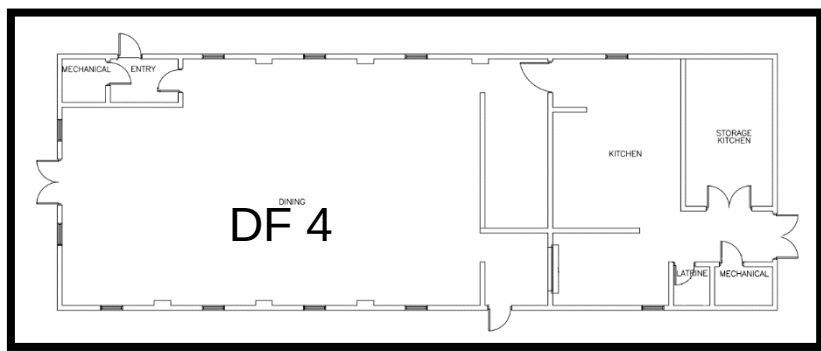
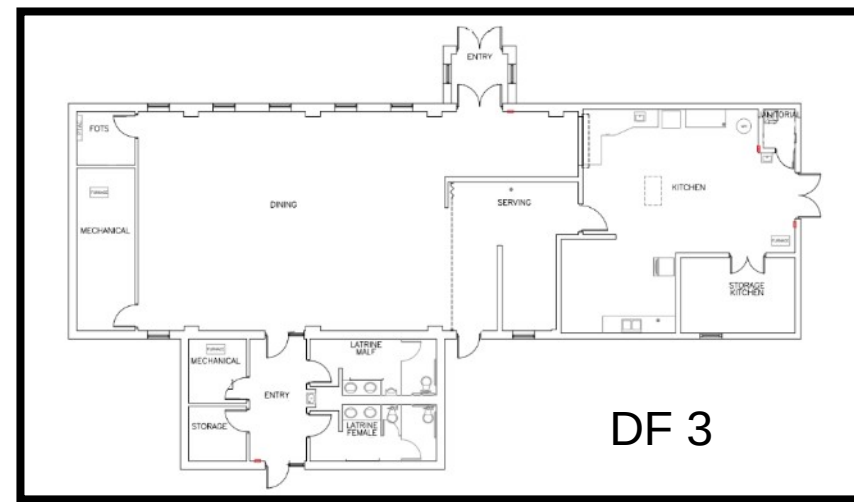
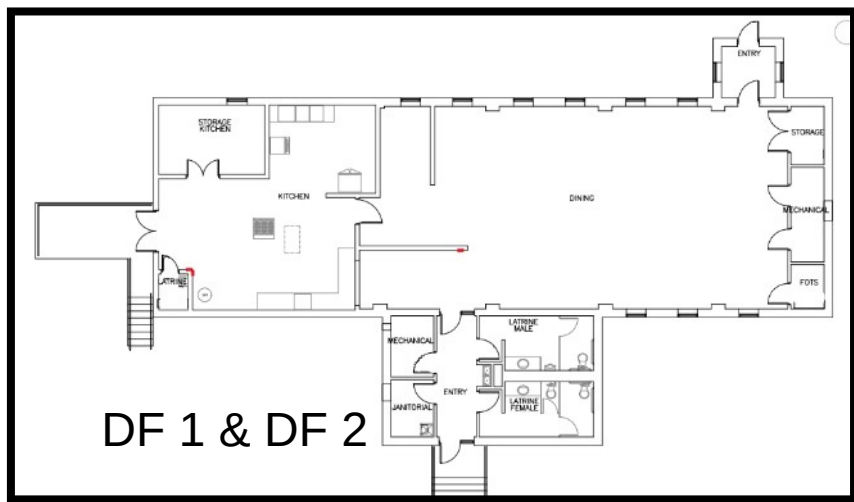
- Latrines and Individual Shower Stalls
- 20 bed spaces (10 Bunk Beds)



Dining Facilities (DF or DFAC)

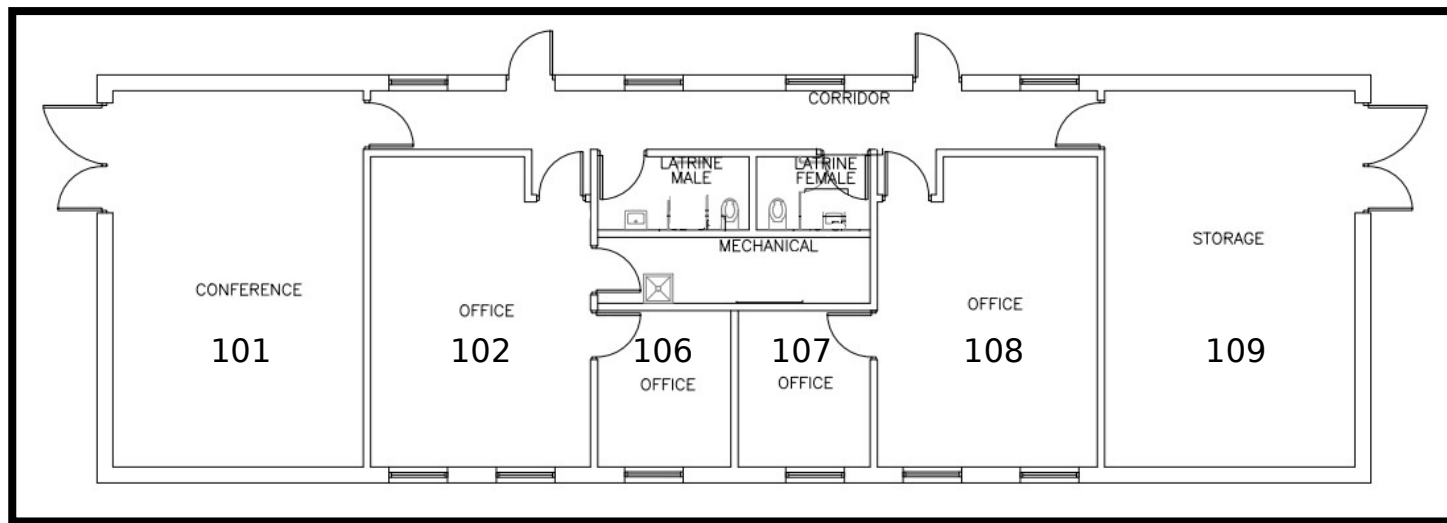


Dining Facilities (DF or DFAC)



Facility	Dining Area SQ FT	Dimension	Supported Capacity	Max Capacity	AV Equip
DF1	2033'	31' x 52'	120	135	NA
DF2	2345'	27' x 60'	120	156	Pull down Screen
DF3	1744'	29' x 33'	120	116	2 TVs/Monitors
DF4	2033'	27' x 33'	120	135	NA
DF5	2345'	31' x 52'	120	156	NA

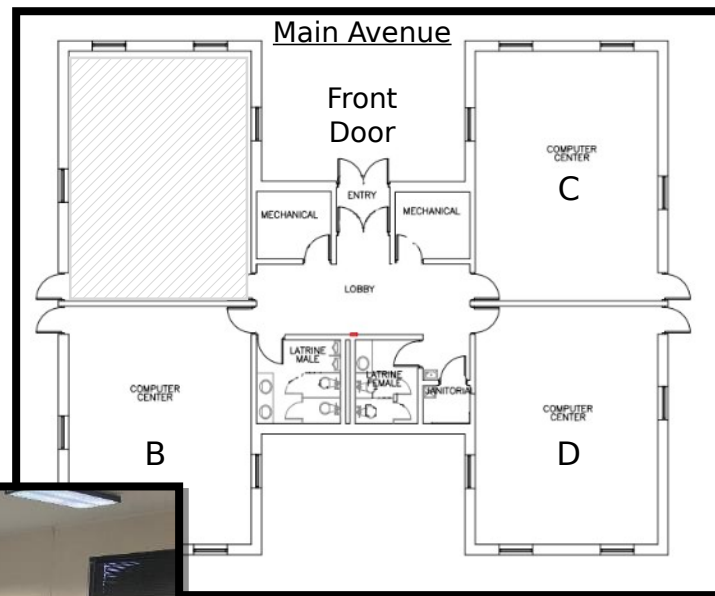
C-Series Orderly Rooms – SPT OR



Room	SQ FT	Dimension	Ceiling	Primary Function
101	437'	17' x 26'	8'	Supply
102	302'	15' x 21'	8'	Office
106	96'	9' x 10'	8'	Office
107	96'	9' x 10'	8'	Office
108	302'	15' x 21'	8'	Office
109	437'	17' x 26'	8'	Supply

All C-Series Orderly Rooms will be listed under SPT OR C, followed by respective number and either N or S side in RFMSS. EX: SPT OR C4 N BLDG4622

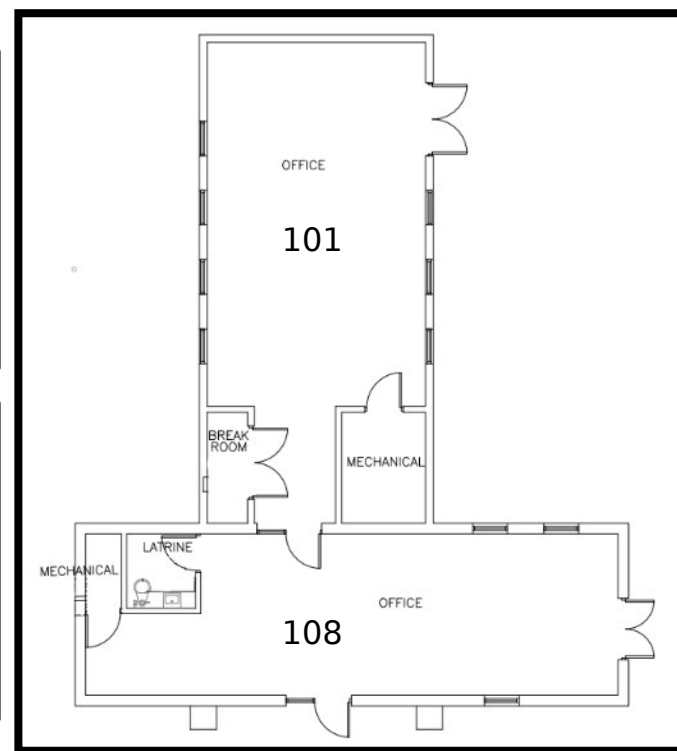
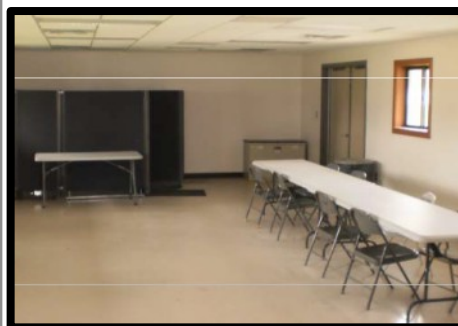
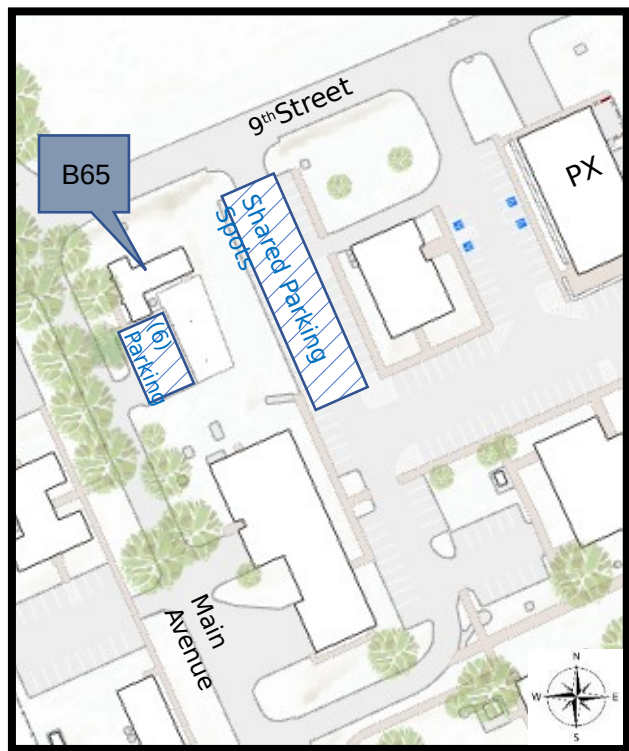
B55 Computer Lab – CR B55 BLDG 3495



Room	Dimension	Primary Function	Supported Capacity	Max Capacity	AV Equip
B,C,D	22' x 30'	Classroom	18	44	Proxima w/Screen, VCR TV, Overhead Projector

B55 Computer lab is listed under CR B55 RM, followed by respective letter in RFMSS. EX: CR B55 RM D

B65 Classroom – CR B65 BLDG 3546

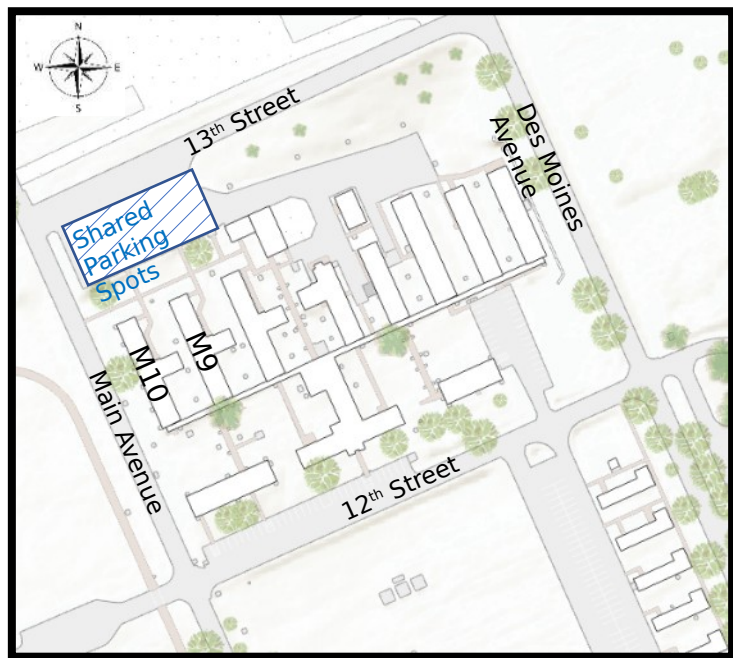


Room	Dimension	Primary Function	Max Capacity	AV Equip
101	35' x 19'	Storage/Supply	45	NA
108	44' x 14'	Office/Supply	38	Phone/Data Switch

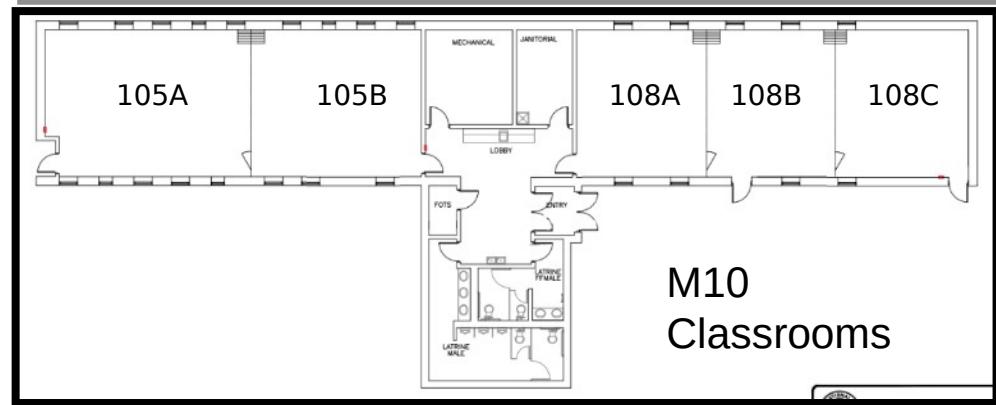
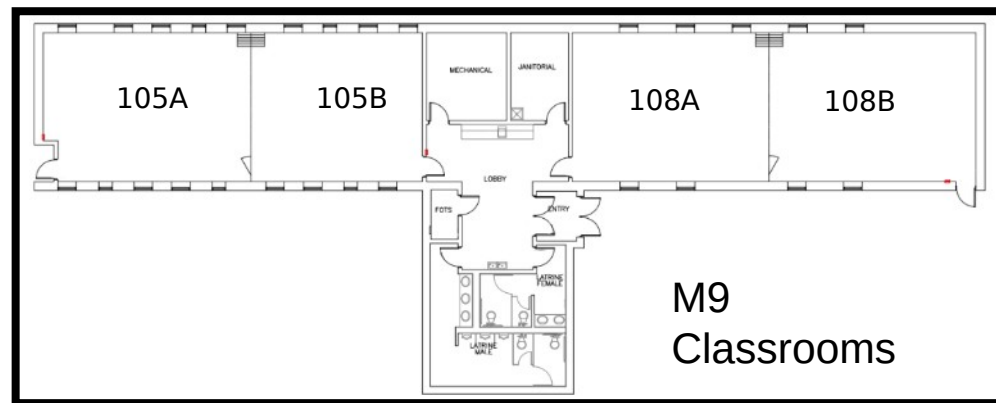
There is No Internet in this building

B65 Classroom is listed under CR B65 BLDG3546, in RFMSS.

M-Series Classrooms – BLDG 5513 / 5512



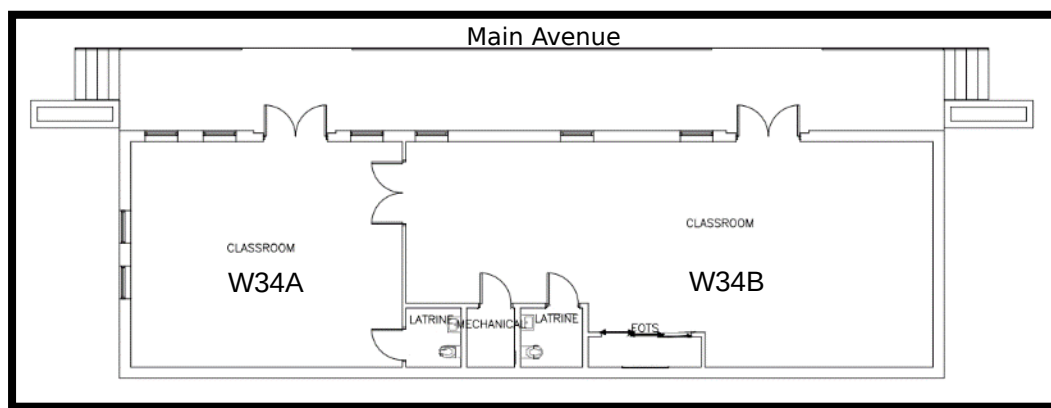
- Classrooms are reserved as full classrooms 105 or 108
- Classrooms are dividable with retractable walls A/B/C
- Shared parking lot can be congested



Room	Dimension	Primary Function	Supported Capacity	Max Capacity	AV Equip
105	24' x 64'	Classroom	72	102	Proxima, TV/VCR, Overhead
108	24' x 50'	Classroom	64	80	Proxima, TV/VCR, Overhead

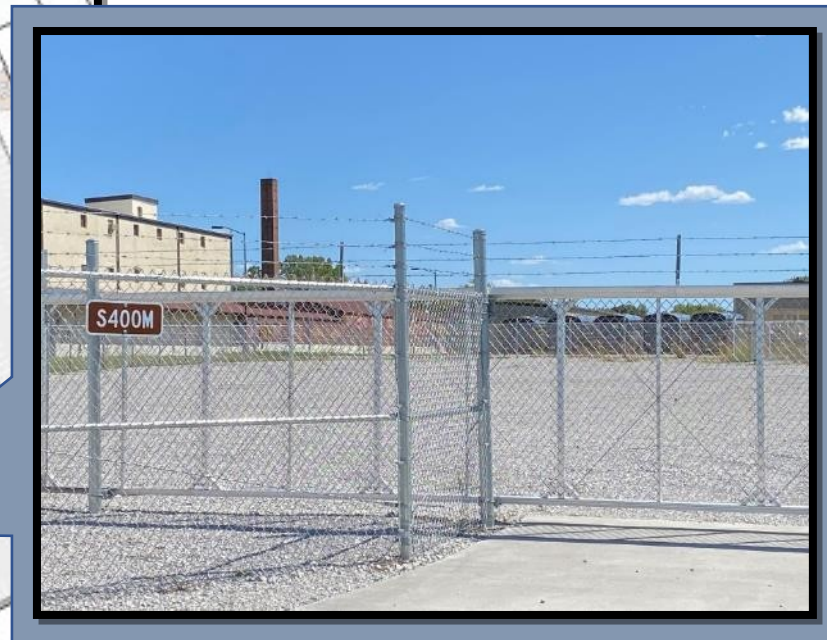
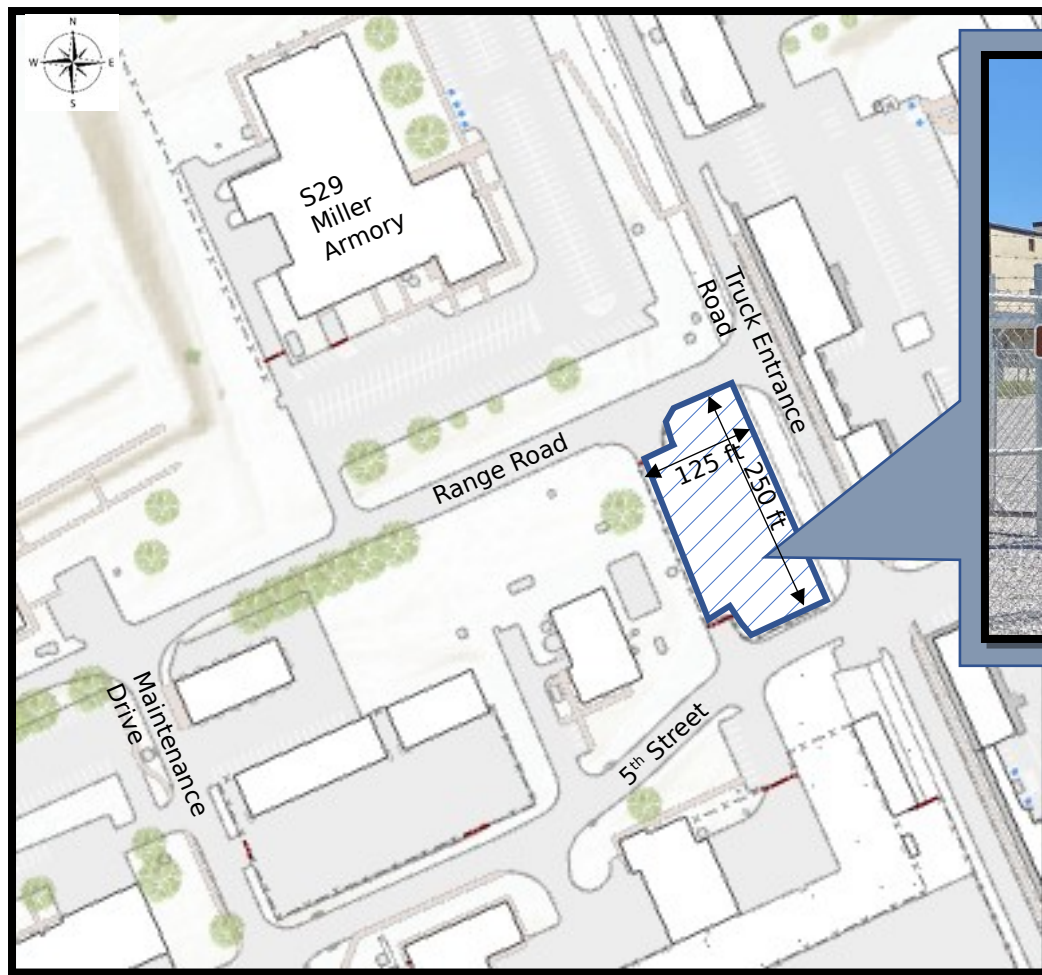
M9 and M10 Classroom are listed under CR M9 or CR M10, in RFMSS.

W34A/B Classrooms – BLDG 2497



Room	SQ FT	Dimension	Primary Function	Supported Capacity	Max Capacity	AV Equip
W34A	506'	22' x 23'	Classroom	16	33	Proxima & Screen
W34B	630'	21' x 30'	Classroom	20	42	Dual Proxima & Screen

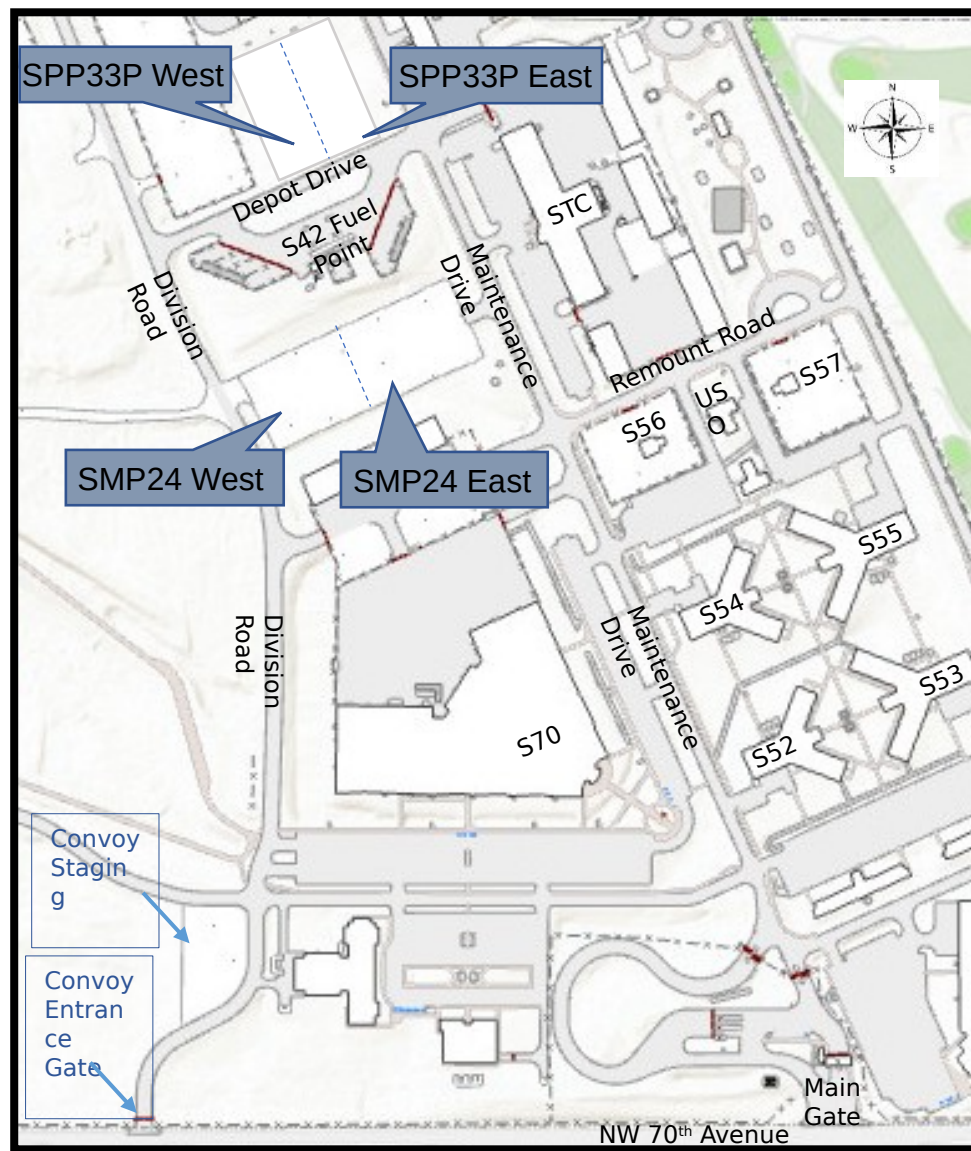
Motor Pool - SPT SMP 400



- Military Vehicles need to be parked in a Motor Pool
- Fenced-in secured Motor Pool located beside the tank trail
- No maintenance building or latrines at this location

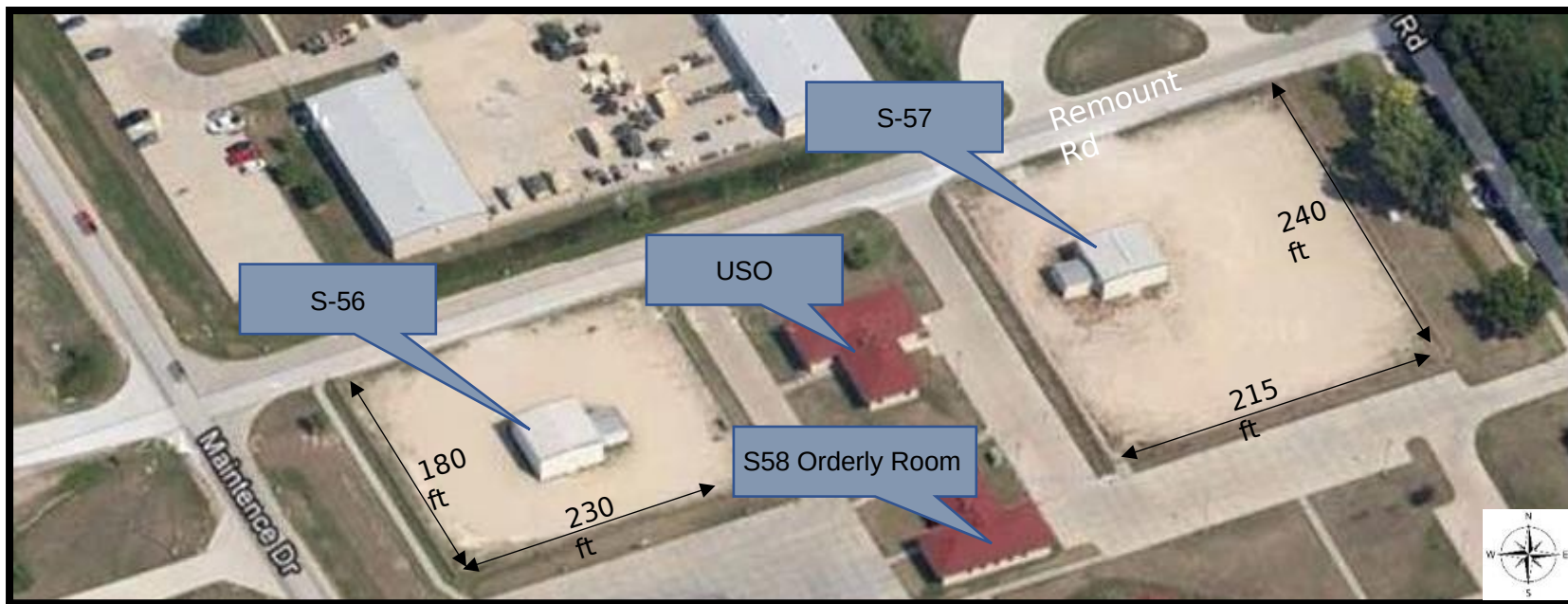
Motor Pools - SPT SMP 24E/24W, SPT SPP 33E/33W

- Unsecure gravel motor pool lots divided into two reservable lots in RFMSS
- SMP 24 East has an entrance/exit located from Maintenance Drive
- SMP 24 West has an entrance/exit located from Division Road
- SPP 33P East and West entrance/exit from Depot Drive
- All fuel assets MUST have secondary containment and be grounded if parked longer than 24hrs
- Convoy Entrance Gate, West of the Main Gate, is for military convoys to use by calling Security at 515-240-3742 approximately 30 minutes prior to arrival/departure



These motor pools are listed under SPT SMP 24 E/W or SPT SPP 33 E/W, in RFMSS.

Motor Pools – S56 / S57 MNT BLDG 1344 / 1396

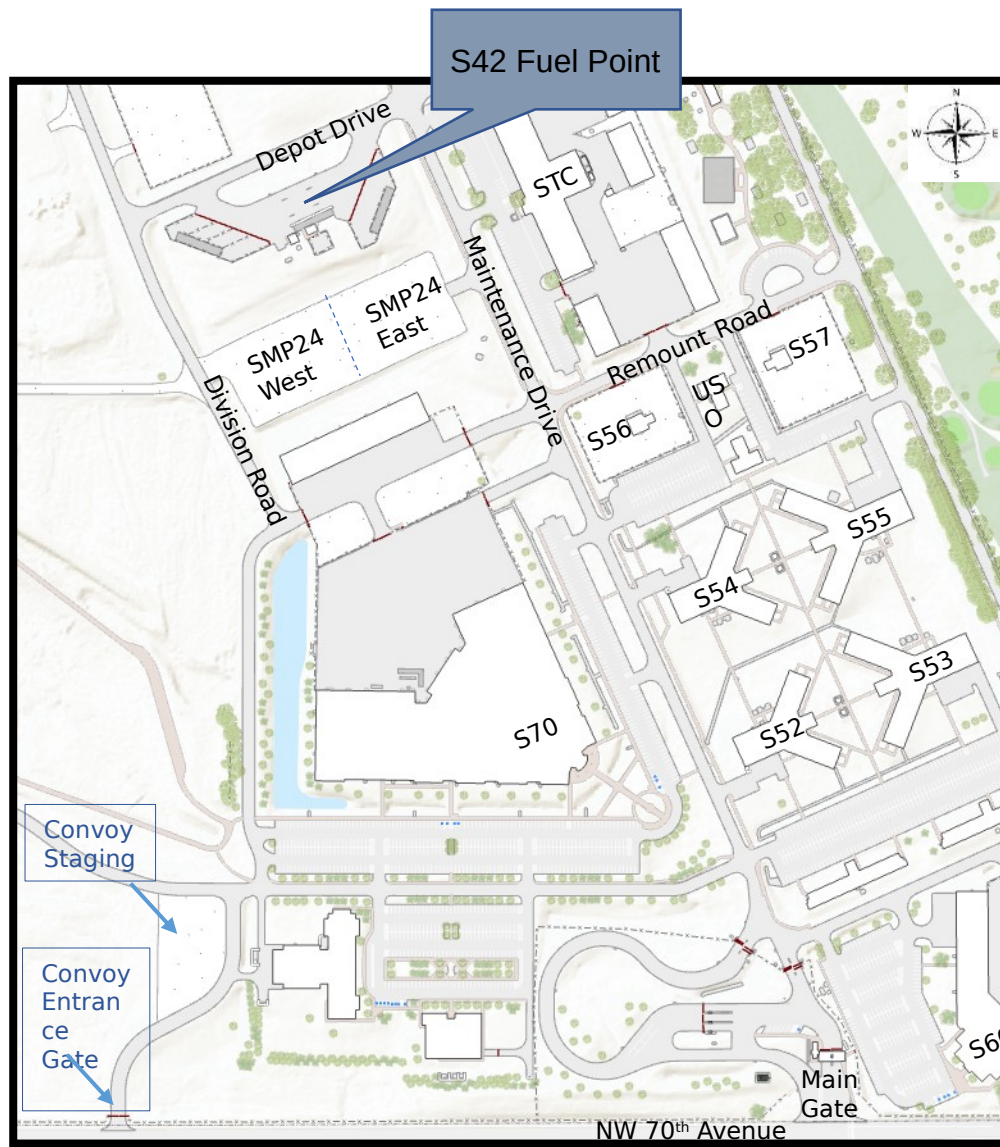


Dimension	Ceiling	Primary Function	Capacity
31'x40'	19'	Maintenance Bay	Variable
19'x19'	10'6"	Office	NA
5'x5'	7'6"	Latrine	NA

- Military Vehicles need to be parked in a Motor Pool
- Military Vehicles may be parked in GSA/POV parking areas temporarily to load/unload baggage

S42 Fuel Point – Fuel PT, Secondary Containment

- Fuel Point 515-252-4678
- Fuel Technician M-F 0730-1600
- 4-6 secondary containment parking spots available in RFMSS, 17'x65', 1 vehicle or trailer per stall
- All fuel assets **MUST** have secondary containment and be grounded if parked longer than 24 hours
- Underground “Locates” must be coordinated 72 hours prior to grounding rods
- There is one permanent grounding rod located at the fuel point
- Bulk fuel requests and refueling large convoys should be forecasted and requested through G4
- **Convoy Entrance Gate**, West of the Main Gate, is for military convoys to use by calling Security at 515-240-3742 approximately 30 minutes prior to arrival/departure



Secondary containment parking is listed under FUEL PT, SECONDARY ..., in RFMSS.

S42 Fuel Point – BLDG 2262



Parade Fields



Parade Fields

1. Drill & Ceremonies/formations
2. Drill & Ceremonies/formations
3. Drill & Ceremonies/formations
Can Support 12 ACFT Lanes
3 Sets/12 Lanes of ACFT
Equipment on site
4. Ceremonies – no stakes or vehicles on this field

If you have questions on what usage/purpose each field can accommodate, please call a RFMSS scheduler

NO STAKES of any kind unless a “Locate” for underground utilities and gas lines has been completed (minimum of 72 hours notice)

All Parade Fields will be listed under PRD followed by respective number in RFMSS.
EX: PRD-01 PARADE

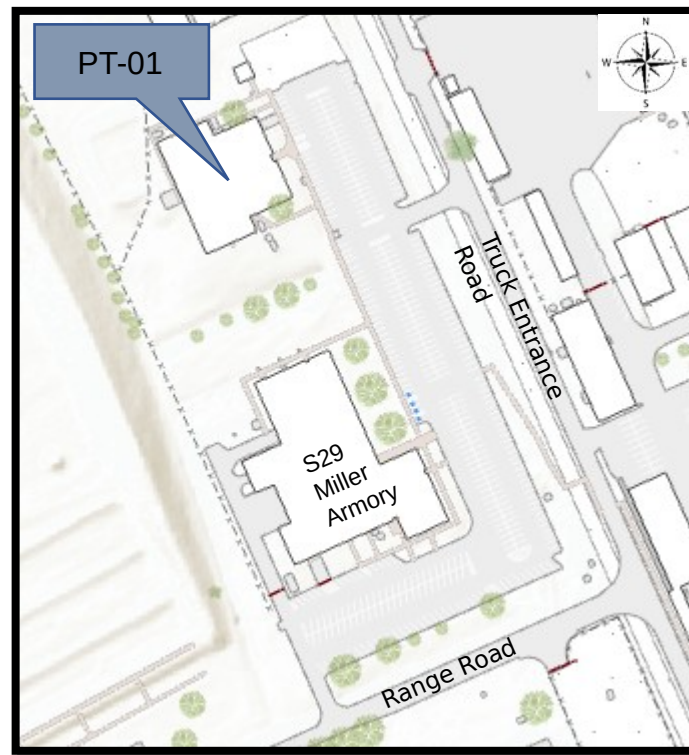
PT-01 Wellness Center – BLDG 3395

- Wellness Center PT-01
- Hours: Every Day 0600 – 2045 (holiday hours vary)
- AUTHORIZED USERS ONLY
- You must show a valid ID
- Classes Monday - Friday, see schedule on website
- ACFT Testing for alternate events only (Row Machine/Bike)
- Unit reservations are made directly with Wellness Center, not through RFMSS
- Office: 515-252-4760

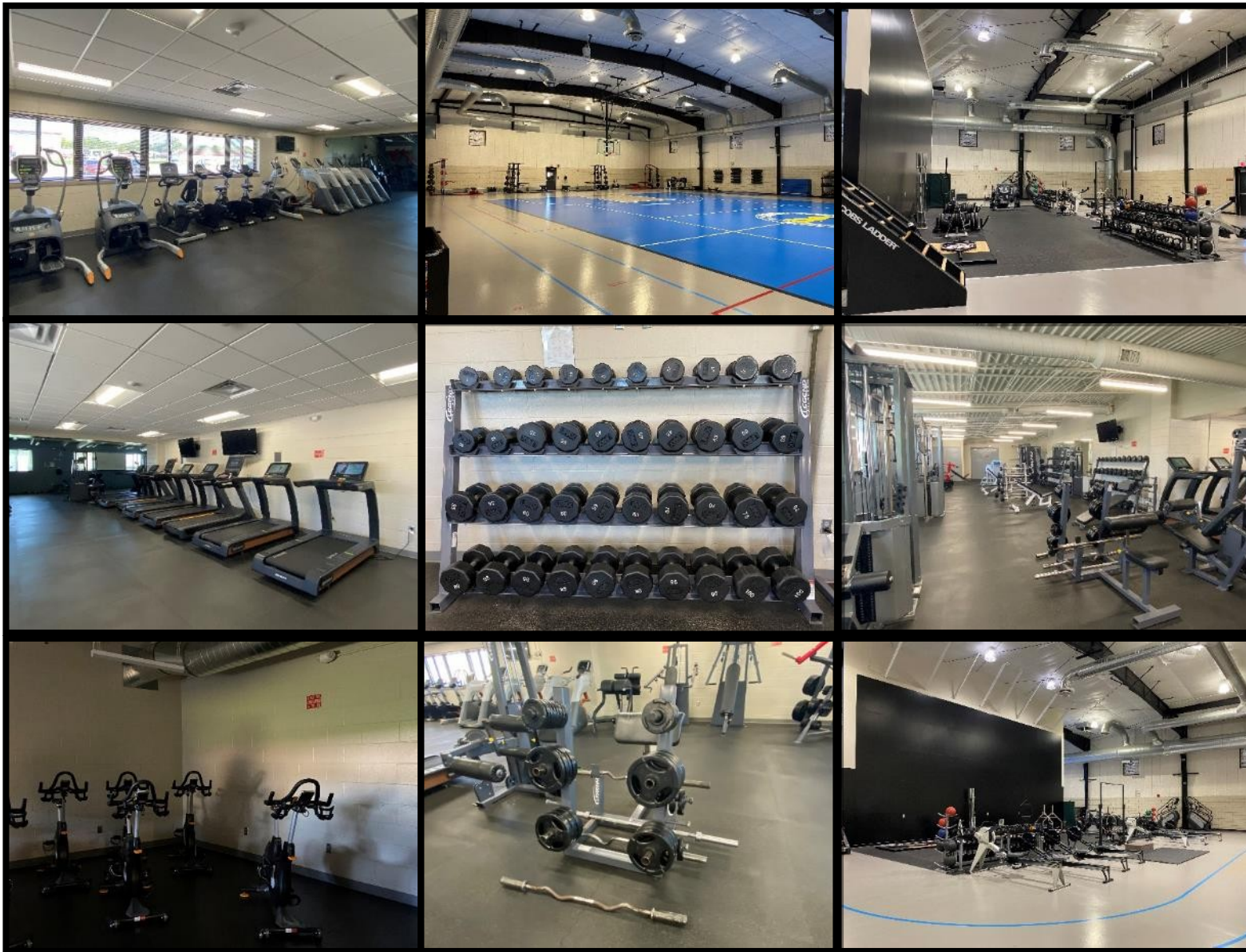
**Do not mix military and civilian
PT clothing**

Camp Dodge Wellness Center

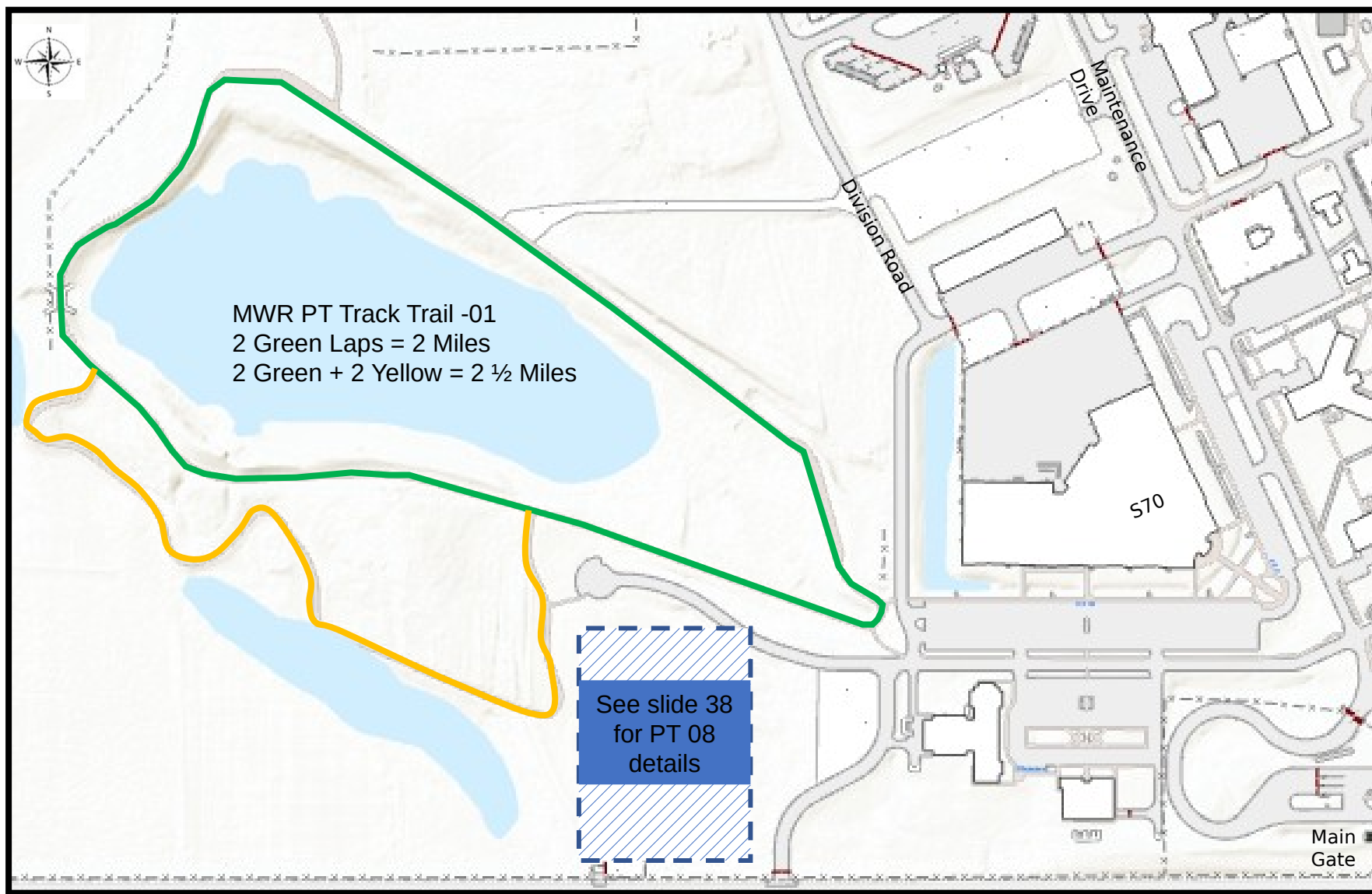
<https://iako.ia.ngb.army.mil/public/campdodge/pt/pages/sitehome.aspx>



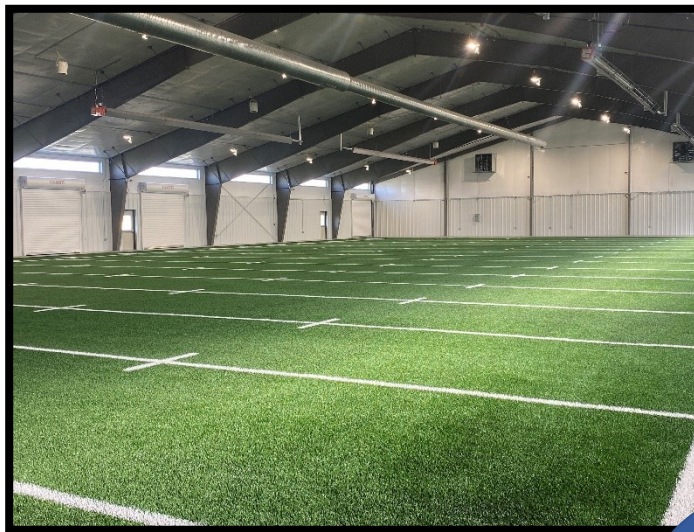
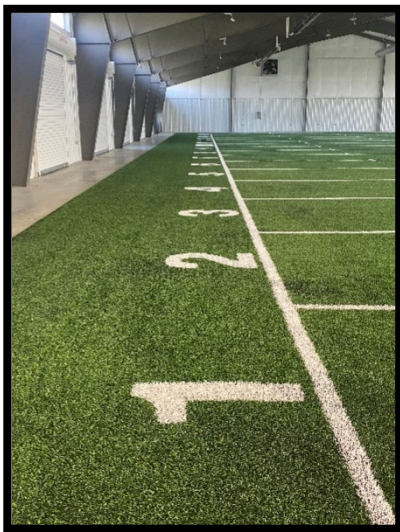
PT-01 Wellness Center – BLDG 3395



PT Track Trail 01



PT-07 ACFT Fieldhouse

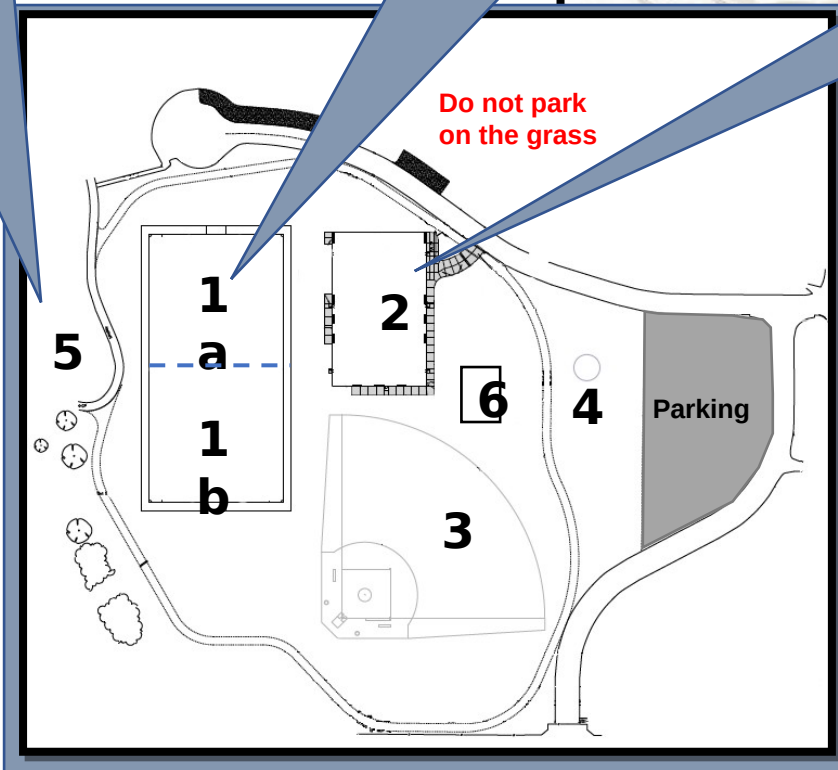
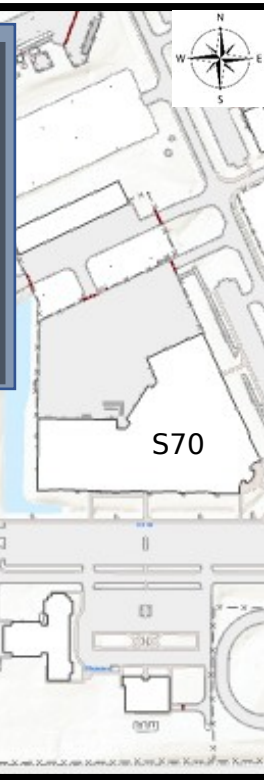
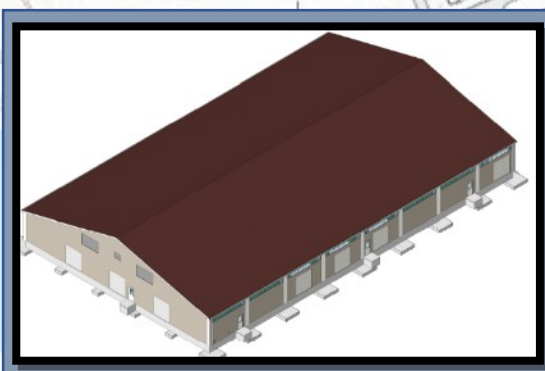


ACFT Fieldhouse

- **Military Use Only**
- 16 Lanes
- ACFT Equipment Located in Storage Cages
- Alternate Event Row and Bikes located in building
- No Water Source in Fieldhouse
- Separate building for Latrines and Drinking Water Source
Recommend units bring Water Coolers



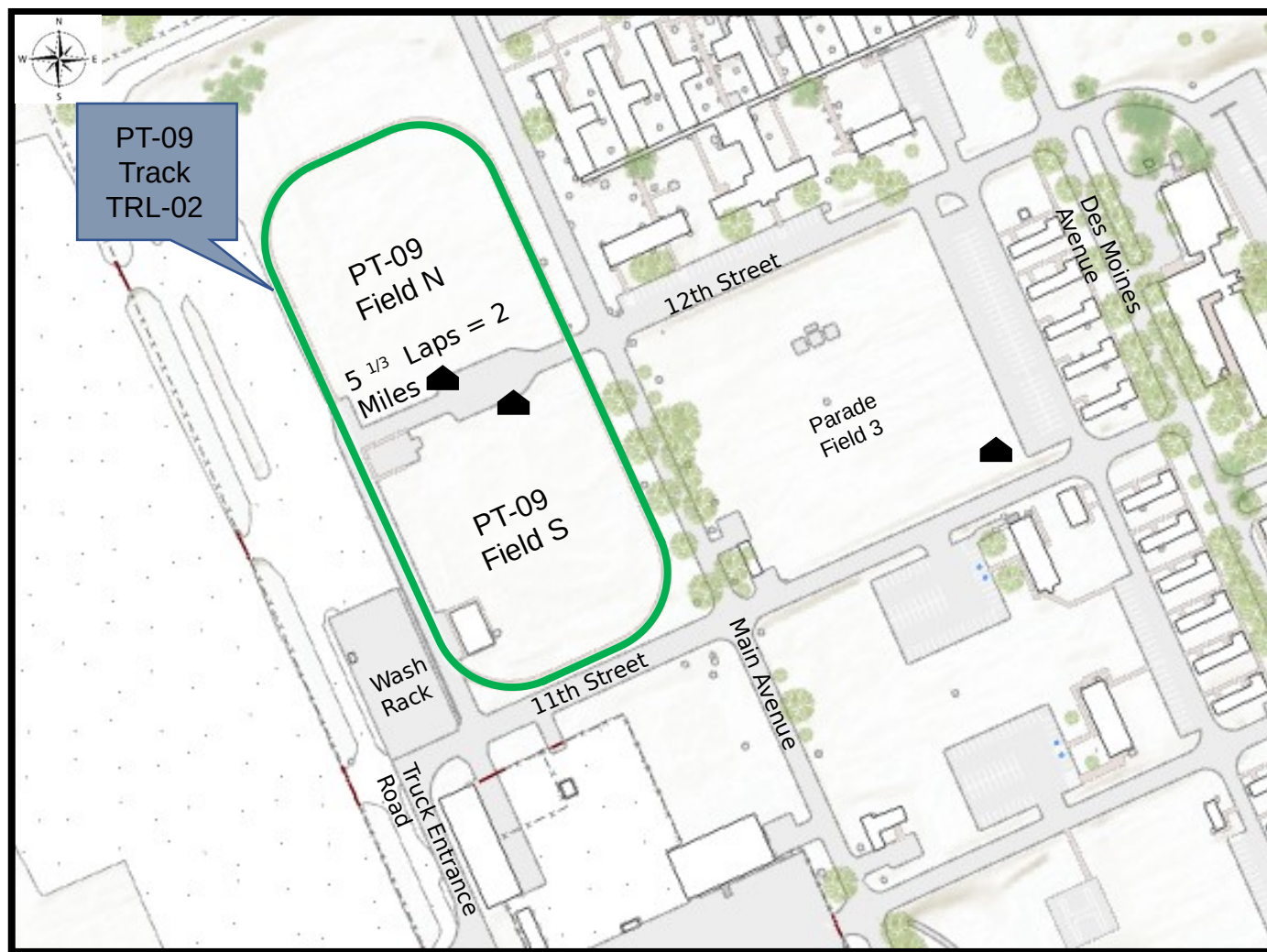
PT-08 Field N / S – MWR PT-08 FLD N / S



1. PT-08 Field – RFMSS Reservable
 - a. PT-08 North
 - b. PT-08 South
2. ACFT Fieldhouse
3. Softball Field TBD
4. Track TBD
5. ACFT Equipment Storage Shed
6. Latrines and Water Fountain

PT-08 Field is listed as MWR PT-08 FLD N / S, in RFMSS.

PT-09 Field N/S/Track Trail-02 – MWR PT-09



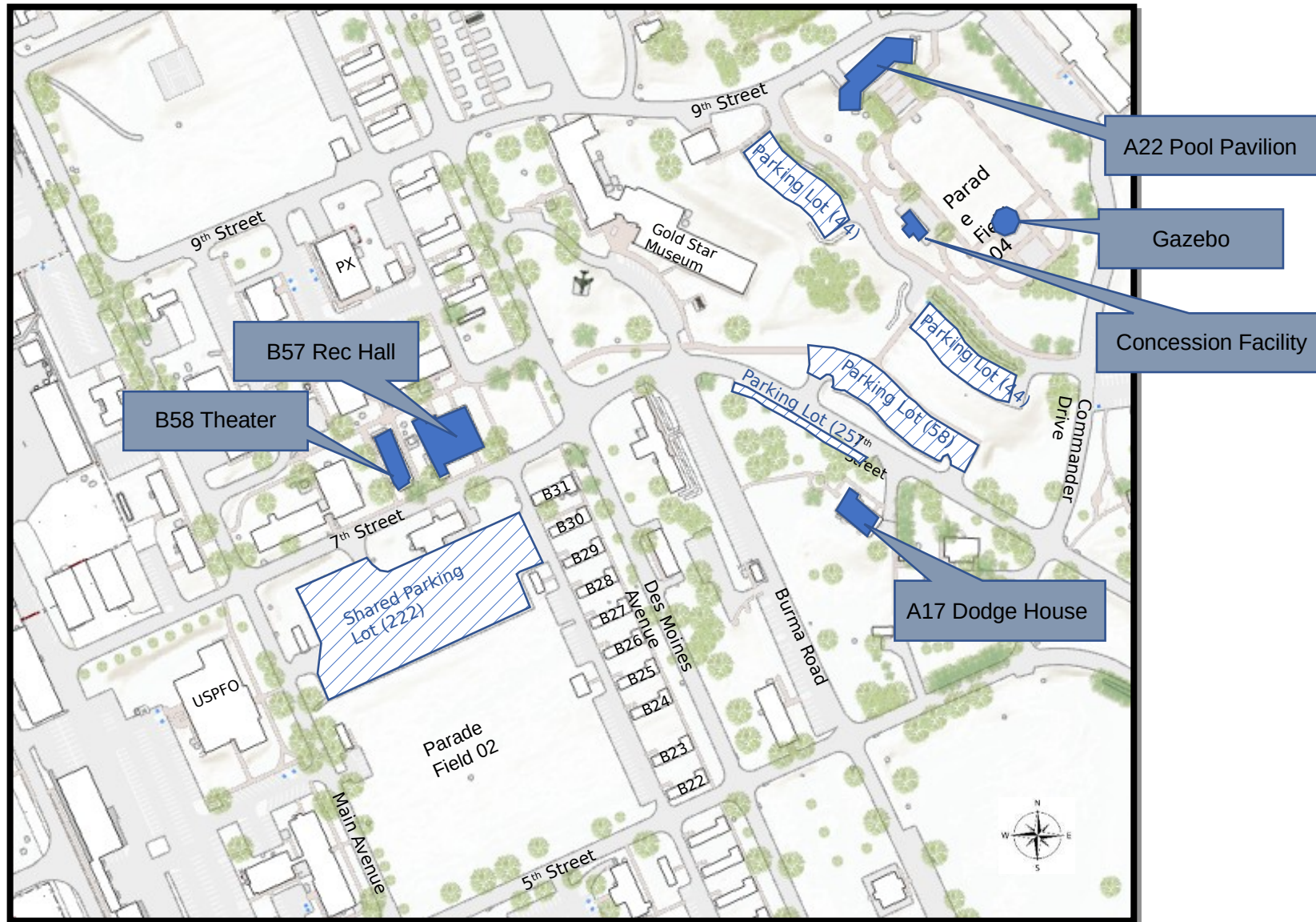
ACFT EVENTS ORDER	
1	3 Rep Max Dead-Lift
2	STANDING POWER THROW
3	Hand Release Push-up
4	SPRINT DRAG CARRY
5	Plank
6	2 Miles Run



▲ ACFT equipment sheds on site

PT-09 Field is listed as MWR PT-09 FLD N / S, Track is listed as MWR PT-09 TRACK TRL, in RFMSS.

Event Facilities



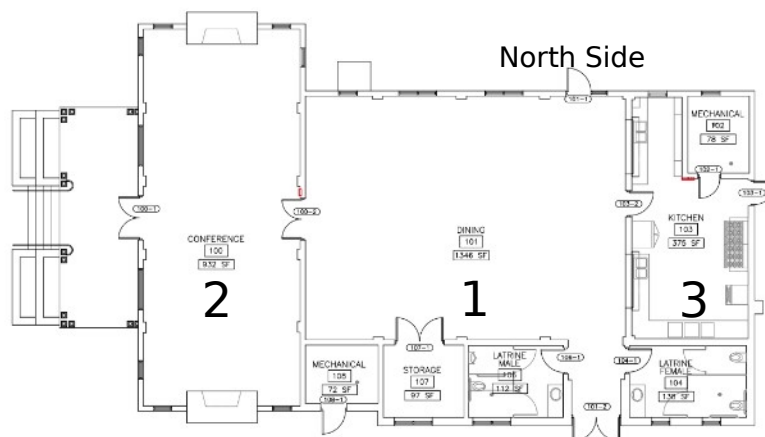
A17 Dodge House – MWR DODGE BLDG 3726



North Side



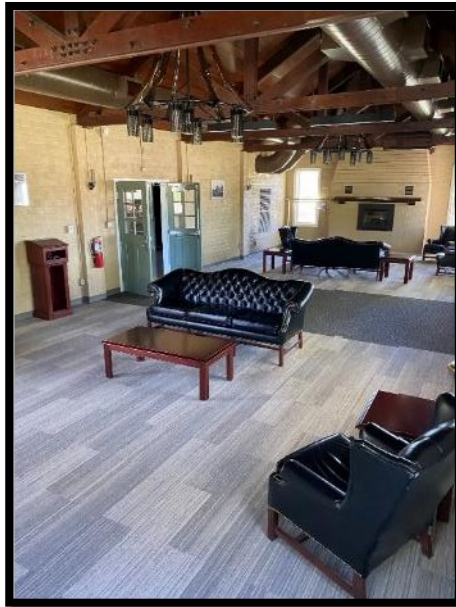
West Side (front)



*The Dodge House
Originally built as an officer
mess hall, this facility is now
used for receptions,
meetings, and classroom
space.*

Room	Dimension	Ceiling	Primary Function	Supported Capacity	Max Capacity		AV Equip
1	30' x 32'	9'6"	Dining/Classroom		90	w/Tables	NA
					190	w/Chairs Only	
2	19' x 43'	9'6"	Dining/Classroom	90	65	w/Tables	TV & VCR
			Fireside Room		140	w/Chairs Only	
3	14' x 20'	9'6"	Kitchen		N/A		NA

A17 Dodge House - MWR DODGE BLDG 3726



A22 Pool Pavilion Complex - CR Pavilion BLDG 3746



Parade Field 4 is for ceremony type events

- Not used for Physical Fitness Training
- No vehicles allowed on grass
- No stakes or posts of any kind due to underground sprinkler system
- Bleachers allowed on concrete
- Only sled chairs allowed on the grass field
- For questions – please contact Scheduler



*The Pool Pavilion
Once the third-largest pool
complex in the world, the pool
pavilion is used primarily for
classroom space and
receptions.*

A22 Pool Pavilion Complex - CR Pavilion BLDG 3746



Kitchen



South View from Parade Field 4



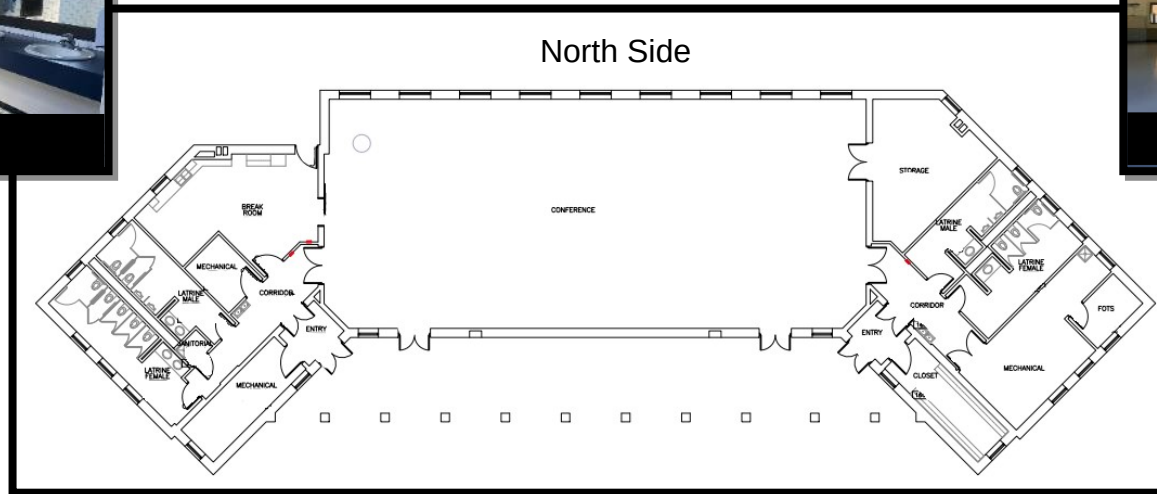
Reception Hall East View



Latrines



Reception Hall South View



Room	Dimension	Ceiling	Primary Function	Supported Capacity	Max Capacity	AV Equip
107	90' x 38'	12'6"	Conference/Reception	16 - 10' tables 25 - 5' round tables 175 chairs	225 w/tables 480 w/chairs 680 standing	Proxima, AV Cart
115	28' x 23'	13'	Kitchen/Breakroom			NA

A22 Pool Pavilion Complex - CR Pavilion BLDG 3746



Gazebo



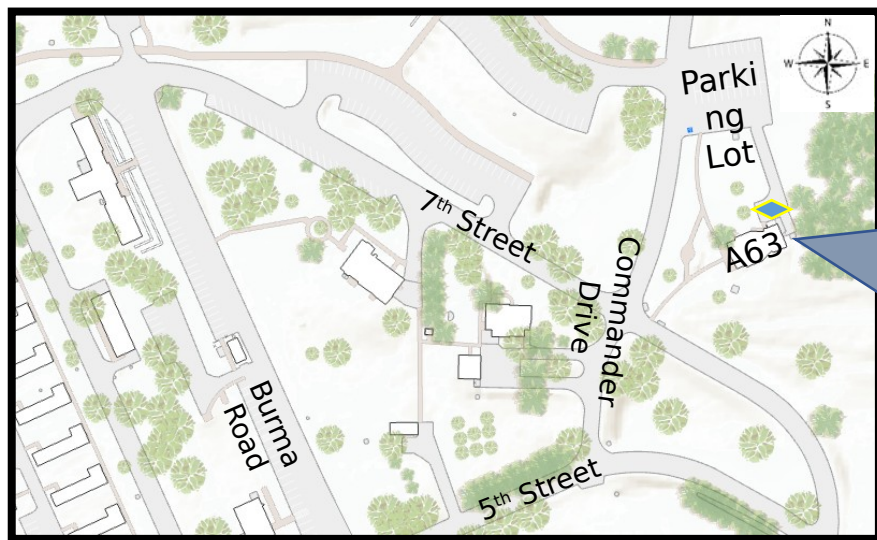
Concession Facility




Gazebo is Wheelchair Accessible



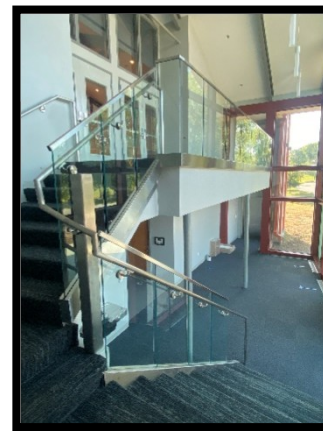
A63 Chapel – MWR Chapel BLDG 3772



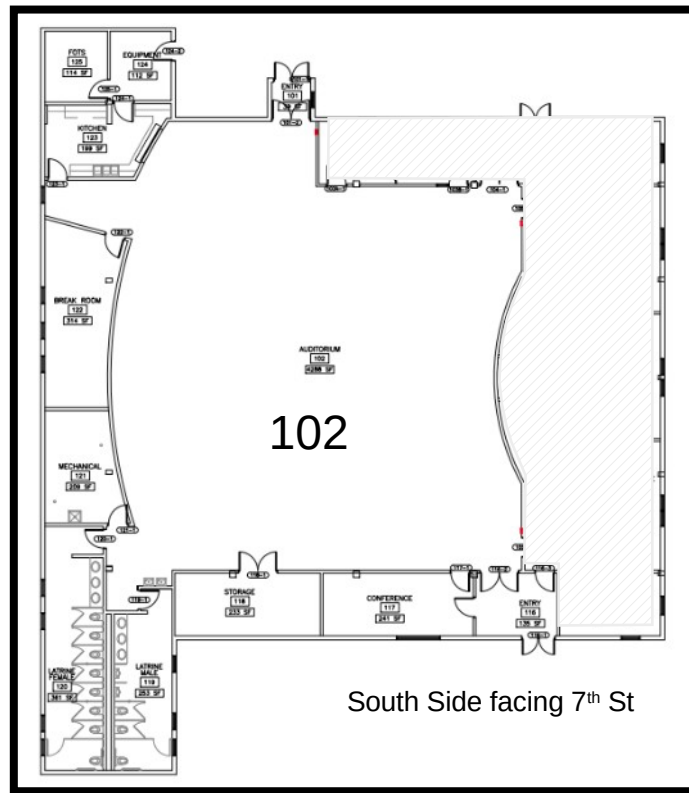
- Maximum Occupancy 150
-  Handicap parking available
- Sanctuary is located on second level, accessible by elevator from main level or second level entrance near handicap parking

The Chapel

Originally built as a memorial hall in the mid-1980s, the Chapel is used for formal religious services and weddings, as well as classroom space for clerical and pastoral education.



B57 Recreation Hall - CR RECHALL BLDG 3585



Auditorium West View



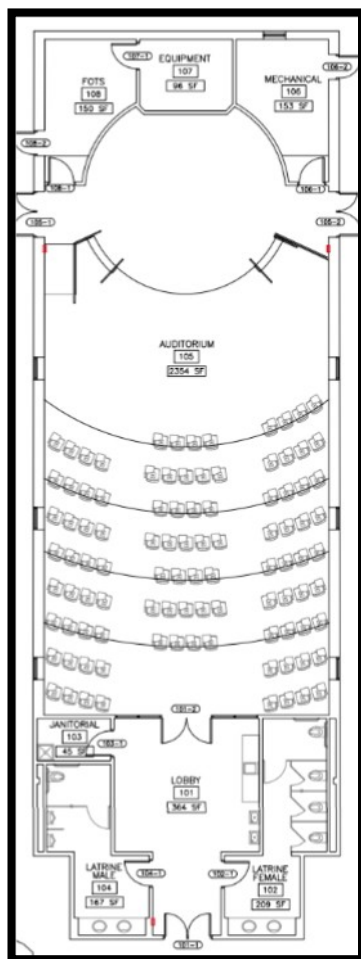
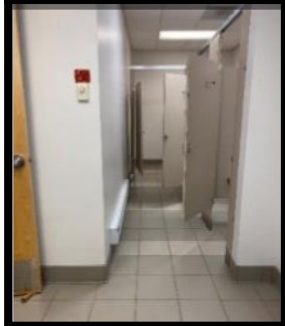
View from 7th St

Room	Dimension	Ceiling	Primary Function	Supported Capacity	Max Capacity	AV Equip
102	62' x 64'	10' 6"	Reception/Meeting/ Instruction	275	285 w/Tables 612 w/Chairs Only 850 Standing	Dual Proxima w/Screens
122	11' x 28'	8'8"	Break Room			NA
123	11' x 14'	8'4"	Kitchen			NA

B58 Theater – CR Theater BLDG 3583



Lobby



Room	Dimension	Primary Function	Supported Capacity	Max Capacity	AV Equip
105	26' x 64'	Auditorium/ Instruction	130	156	ICN Proxima, DVD, VHS, and Sound

Inter Urban Park – MWR Urban Park



1 Large Shelter 10 Tables and Grill



Playground



Latrines



Large Shelter Interior



Horseshoes



2 Small Shelters
2 Tables and 1 Grill

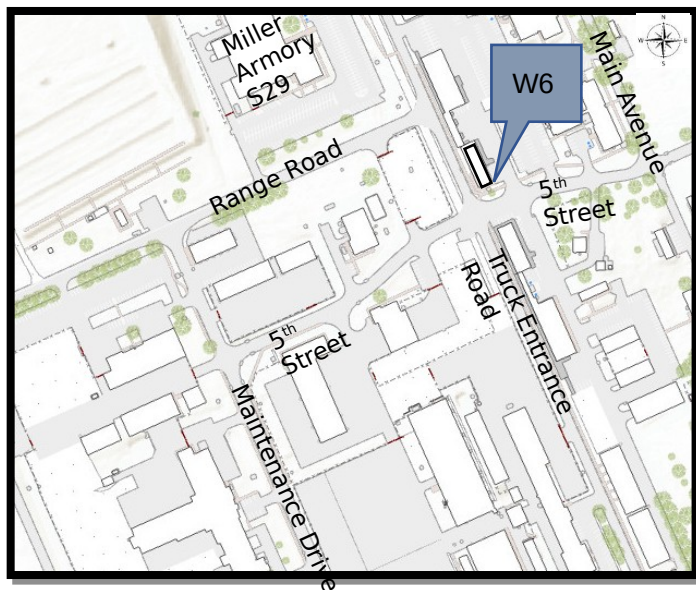


5 Picnic Pads
1 Table and 1 Grill

Iowa Gold Star Military Museum



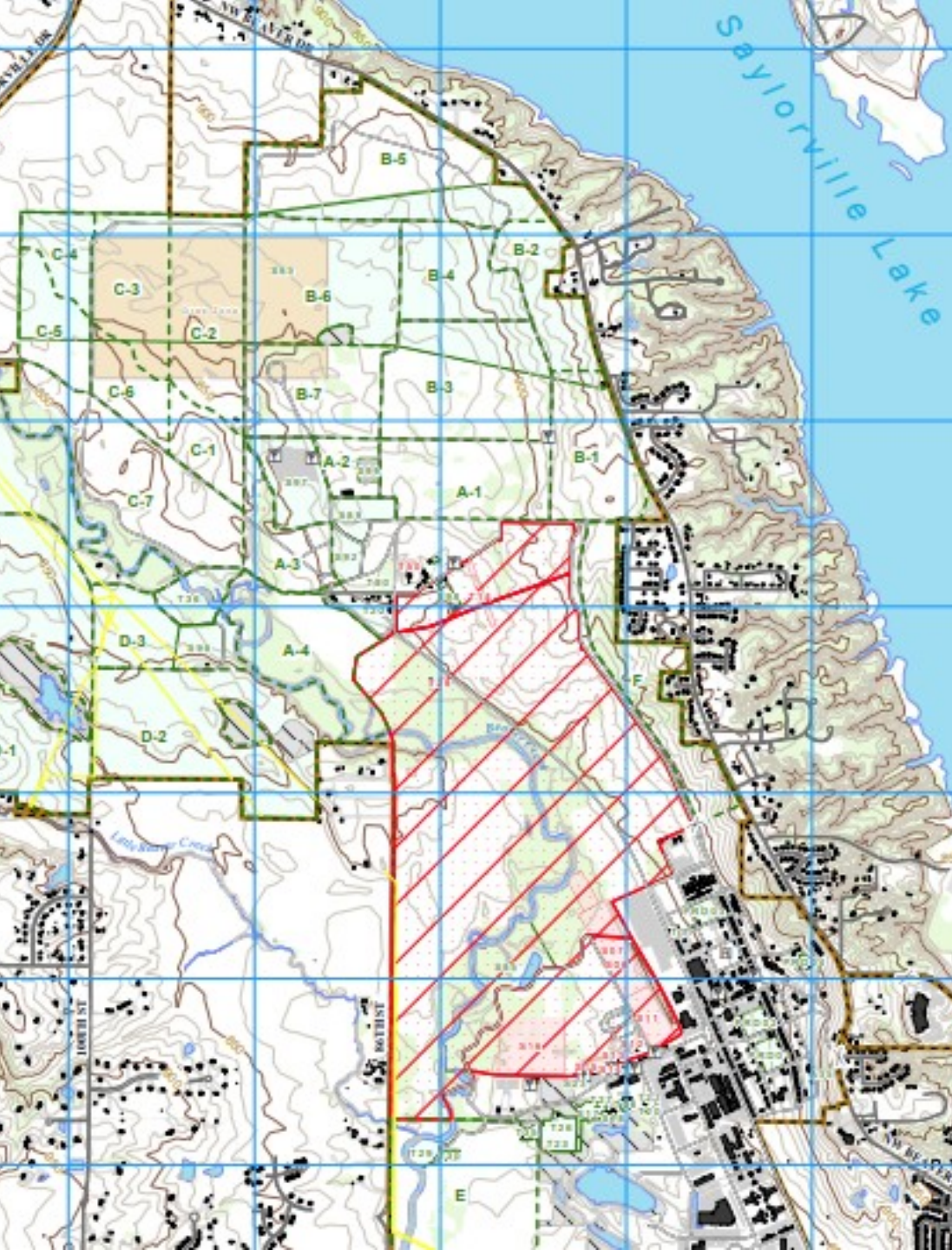
W6 Facilities Management



- Facilities issue/clear staff
- Open every day 0700-1630 hours except federal holidays and federal holiday weekends
- Anything outside of normal business hours needs to be approved 7 days prior by W6 Facilities NCOIC (515)-252-4175
- Stage is reserved through RFMSS, it consists of ten 4'x8' pieces and one staircase
- Gas Grills are for military unit MWR events only
- Does not have Proxima's or PA systems

Items	MWR Items
Linens/Blankets (chargeable)	Bags Game
Cots	Volleyball Set
Metal Folding Chairs (600)	Footballs
Plastic Tables 18 qty 6' / 60 qty 8'	Soccer balls
5G Water Coolers (16)	Kickballs
Large Ice Chests (6)	Basketballs
Direction Arrows	Horseshoes
Orange Cones	Lasso Ball

Ranges and Training Areas

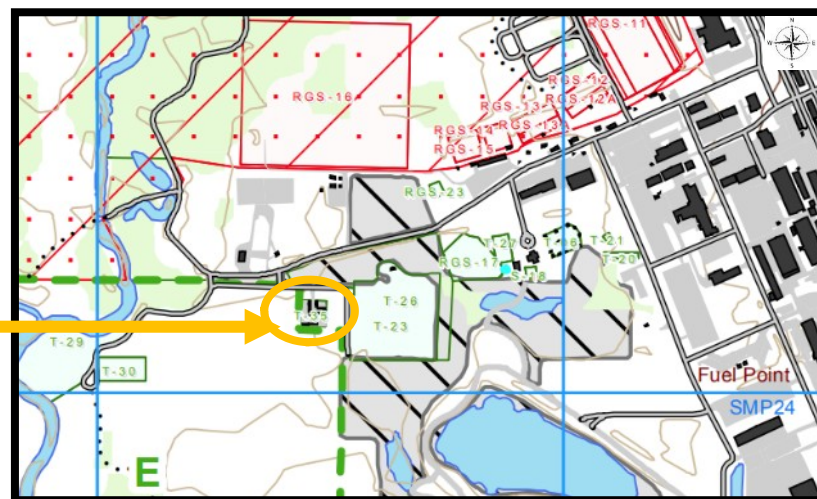


RG Mobile MOUT



Range Mobile MOUT

- For Military and Law Enforcement Only
- Facility is used for low-level collective training specific tasks before training on unit proficiency MOUT sites
- Close quarter combat, field training exercises (FTX), law enforcement training non-fire, and military operations in urban terrain
- Located on Cantonment Training Area T-35
- West end of Range Road in top right (NE) corner of Training Area E
- 24 connex containers pictured on the left
- Portable Latrines within walking distance
- Standard Ammunition: Blanks



RGS-06/07/11- Ranges and Classroom 3259



RGS-11 CR BLDG 3259



RGS-11 AUTO FD FIRE

RGS-06 Auto Sniper

RGS-07 Auto MPMG Range

RGS-11 Auto Field Fire Range and Classroom

- For Military and Law Enforcement Only
- Live Fire Ranges all collocated
- Requires: MFR from Unit Commander stating the trainer meets qualifications to operate the weapon being fired as per INGR 1-1
- Requires: DRAW and Range briefing to run range; needs to be scheduled through Range Control
- Standard Ammunition: 7.62mm, 5.56mm
- 10 firing points
- Ammo Breakdown Shed, Covered Bleachers Area, Latrine, and Control Tower
- Classroom can hold 18 personnel to support range activities

RGS-12/13 BSC 10/25M - Range and Classroom 3257/3209



RGS-12 BSC 10/25M Range and Classroom 3257

RGS-13 BSC 10/25M Range and Classroom 3209

- For Military and Law Enforcement Only
- Live Fire Range
- Requires: MFR from Unit Commander stating the trainer meets qualifications to operate the weapon being fired as per INGR 1-1
- Requires: DRAW O5 signature, OIC/RSO Memo E6 and above, and copy of 581 from CDJMTC ASP
- Requires: Range briefing to run range; needs to be scheduled through Range Control
- Standard Ammunition: 12 gage, 7.62mm, 5.56mm, .38cal, .45cal
- 25 firing points
- Ammo Breakdown Shed, Covered Bleachers Area, Latrine, and Control Tower
- Classroom can hold 24 personnel to support range activities

RGS-14 CPQC - Auto Range and Classroom 3203



RGS-14 Combat Pistol Qualification Course (CPQC) Auto Range and Classroom

- For Military and Law Enforcement Only
- Live Fire Range
- Requires: MFR from Unit Commander stating the trainer meets qualifications to operate the weapon being fired as per INGR 1-1
- Requires: DRAW and Range briefing to run range; needs to be scheduled through Range Control
- Standard Ammunition: 9mm, .38cal, .45cal
- 5 firing points
- Ammo Breakdown Shed, Covered Bleachers Area, and Latrine
- Classroom can hold 30 personnel to support range activities

RGS-16 - Automated Record Fire Range



RGS-16 Automated Record Fire Range

- For Military and Law Enforcement Only
- Live Fire Range
- Requires: MFR from Unit Commander stating the trainer meets qualifications to operate the weapon being fired as per INGR 1-1
- Requires: DRAW and Range briefing to run range; needs to be scheduled through Range Control
- Standard Ammunition: 5.56mm, 22 ball
- 10 firing points
- Ammo Breakdown Shed, Covered Bleachers Area, Latrine, and Control Tower

RG Weapons Cleaning - Bldg 2196



RG Weapons Cleaning Building

- For Military and Law Enforcement Only
- Do Not Clean Weapons in DFAC areas
- 12 Cleaning Stations, Personal Protective Equipment (PPE) provided
- Reserve the Weapons Cleaning Building when you use the Ranges
- Units provide their own Cleaner, Lubricant, and Preservative (CLP)
- Units provide their own cleaning swabs, rags, and brushes

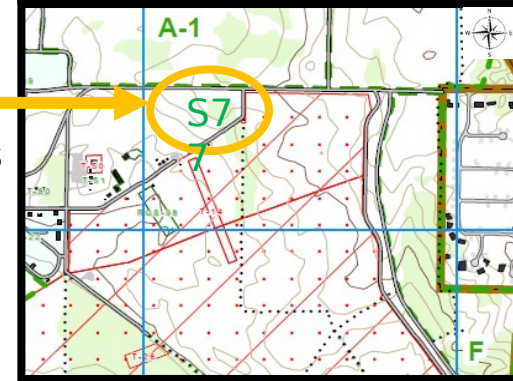
RGS-17 - Hand Grenade Qualification



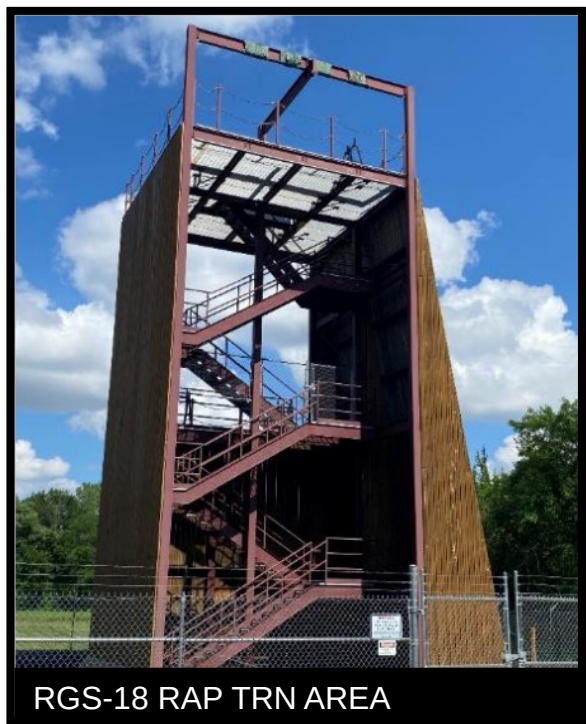
RGS-17 HAND GR QUAL

RGS-17 Hand Grenade Qualification (Non-Firing Course)

- Located in Training Area S77, Military use only
- MFR Required from Unit Commander stating the trainer meets qualifications to operate the grenade range per INGR 1-1
- 7 stations, identification board available at Range Control
- 18 max allowable people on the course
- 1 Covered Bleachers Area
- *No Latrine on site*

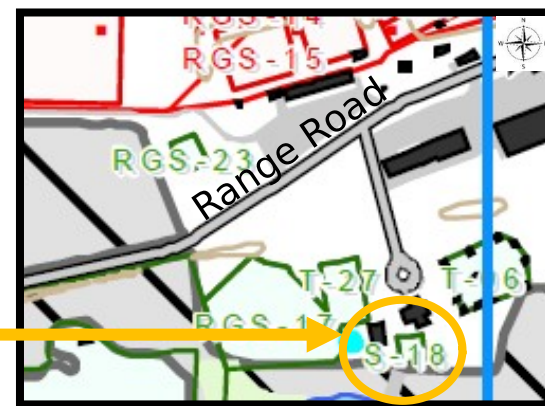


RGS-18 - Rappel Training Area



RGS-18 Rappel Training Area

- For Military and Law Enforcement Only
- Required: Qualified Rappel Master with certificates, medic, trained and qualified Safety OIC/NCOIC
- Requires: DRAW and Range briefing to run range; needs to be scheduled through Range Control
- Used to practice rappelling (Rope Descent)
- Located South of Range Road
- Indoor latrines and water fountain

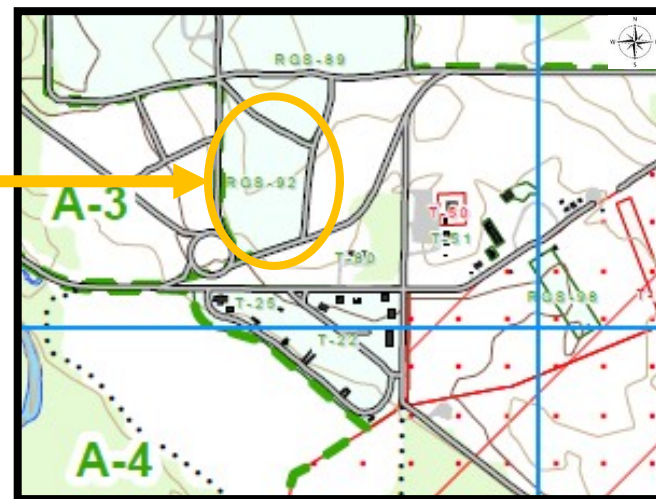


RGS-92 - Wheeled Vehicle Driver Course



RGS-92 Wheeled Vehicle Driver Course

- For Military use Only
- Located in Training Area 92
- Area for teaching basic driving skills, four-wheel drive situations, parking, and backing up
- Suitable for 12 vehicles
- *No Latrine on site*

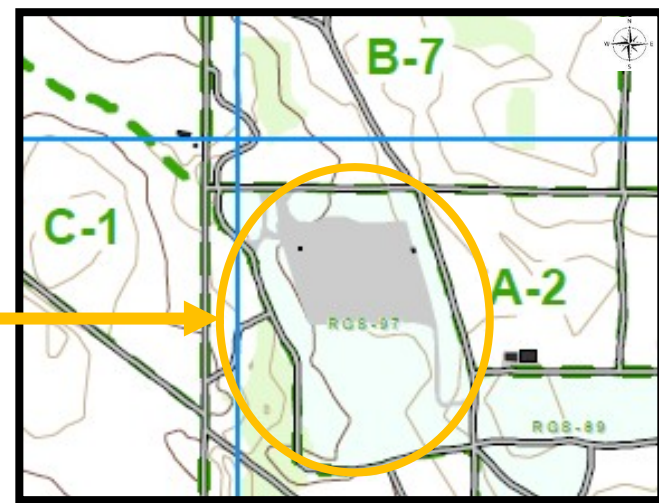


RGS-97 - Forward Operating Base (FOB)



RGS-97 Forward Operating Base

- For Military and Law Enforcement Only
- MFR Required from Unit Commander stating the trainer meets qualifications to operate this range per INGR 1-1
- Located in Training Area 97
- Suitable for 12 vehicles
- Storm Shelter
- *No Latrine on site*



RGS-98 - Urban Assault Course

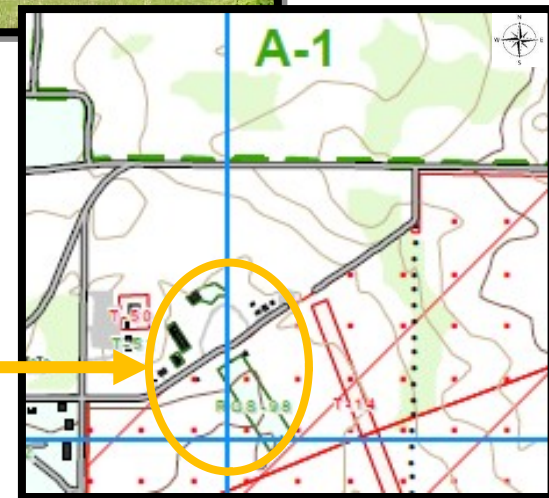


RGS-98 Urban Assault Course

- For Military and Law Enforcement Only
- Range is used to train and test individuals and up to platoons on tasks associated with Military

Operations in Urban Terrain (MOUT)

- 5 stations consist of: the individual/team trainer, squad/platoon trainer, grenadier gunnery station, urban offense/defense building, and underground trainer
- Standard Ammunition: SIM Rounds
- Located in Training Area 98
- Storm Shelter
- *No Latrine on site*

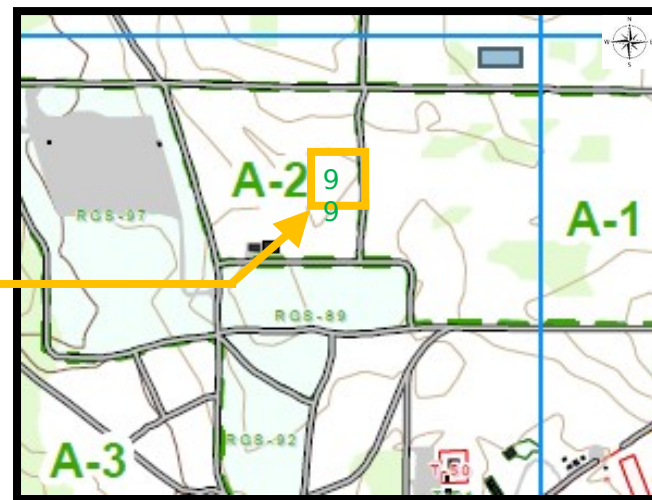


RGS-99 - Logistics Staging Area (LSA)



RGS-99 Logistics Staging Area

- For Military and Law Enforcement Only
- MFR Required from Unit Commander stating the trainer meets qualifications to operate this range per INGR 1-1
- Located in Training Area 99
- Large graveled area
- *No Latrine on site*



RGT-14 - Grenade Launcher

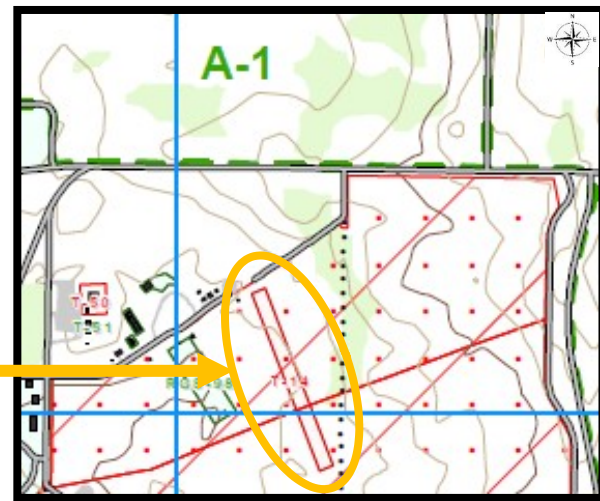


RGT-14 GRENADE LCHR



RGT-14 Grenade Launcher

- For Military and Law Enforcement Only
- MFR Required from Unit Commander stating the trainer meets qualifications to operate this range per INGR 1-1
- Standard Ammunition: Paint Rounds Only
- 8 Firing Points
- Located in Training Area 14
- Storm Shelter
- Latrine Building



RGT-17 - Land Navigation Course

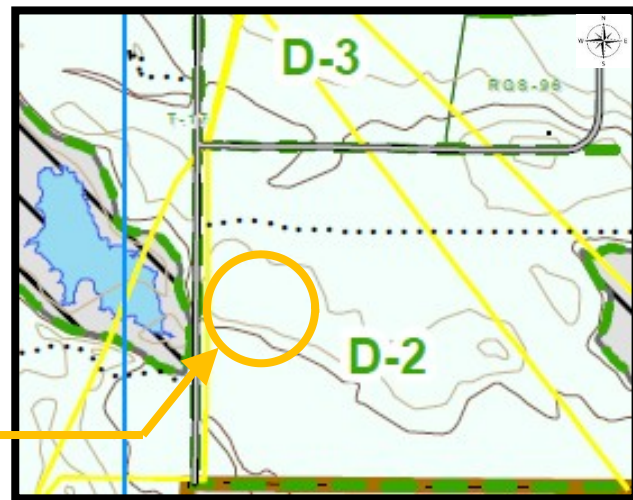


RGT-17 LAND NAV CRS



RGT-17 Land Navigation Course

- For Military Use Only
- Scheduled and use day/night mounted and/or dismounted map reading, terrain associations, or navigational training
- 30 position stakes and a pace counting location
- 1 covered area
- 1 set of uncovered bleachers
- Located in Training Area D2
- *No Latrine on site*

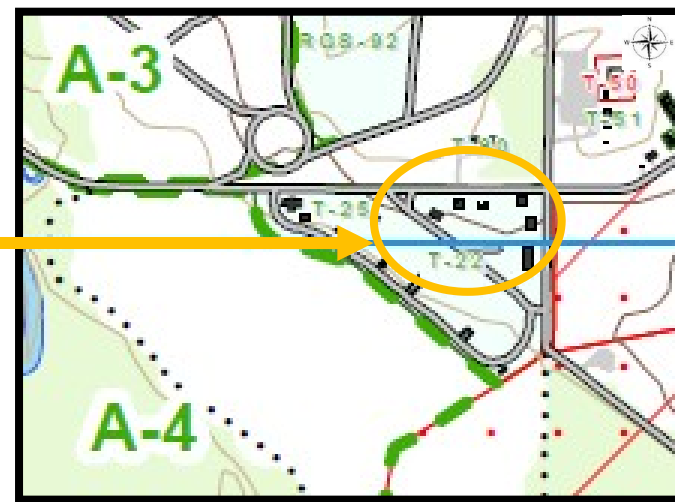


RGT-22 - MOUT Buildings



RGT-22 MOUT Buildings

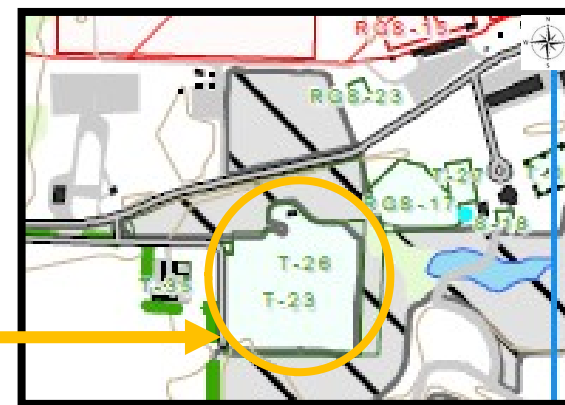
- For Military and Law Enforcement Only
- Training range designed to meet the training requirements of an infantry company-sized unit in an urban environment
- Located in NW corner of Training Area A4
- Standard events: urban operations, close quarter combat, FTX, individual and collective task training for medical and non-medical personnel
- Standard Ammunition: Blanks, Paintball
- 21A, 21B, 21C, 22A, and 61A are single-story buildings
- 22B and 23A are two-story buildings
- *No Latrine on site*





RGT-23 Confidence Course

- For Military Use Only
- Required: DRAW, CLS/Medic
- Structure designed for developing individual Soldier confidence and strength through a series of obstacle
- 15 obstacles (not all pictured)
- Located on cantonment West on Range Road
- Portable latrines #01 and #02 are provided on site



RGT-23 - Confidence Course

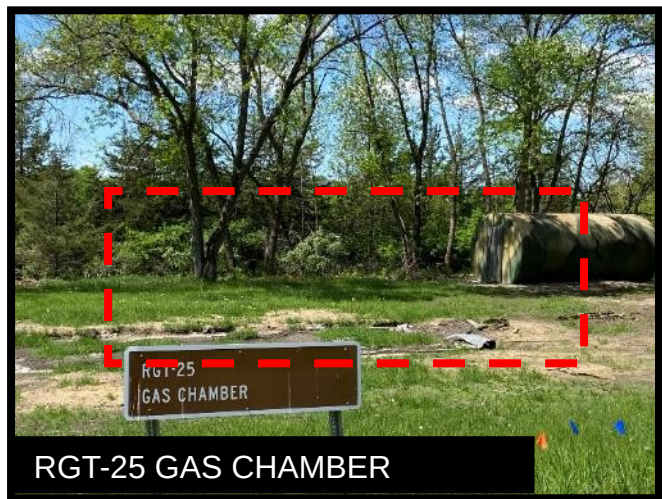
CUI



RGT-23 CONFI CRS

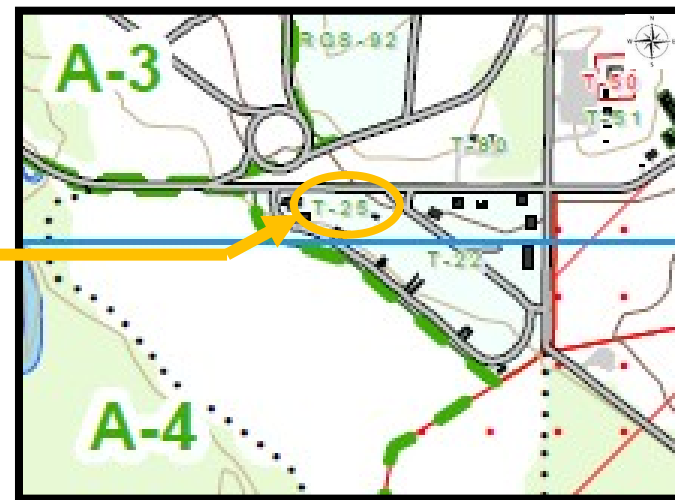


RGT-25 - Gas Chamber



RGT-25 Gas Chamber – under construction

- For Military and Law Enforcement Only
- Building used for training in the use of protective masks and the effects of chemical warfare
- Located in North Training Area A4
- *No Latrine on site*



RGT-27 - Leadership Reaction Course



RGT-27 LDRSHIP CRS

RGT-27 Leadership Reaction Course

- For Military Use Only
- Designed for developing leadership, teamwork, and confidence through a series of obstacles
- Required: DRAW, CLS/Medic
- 5 water obstacles, 7 land obstacles, binder of events and instructions at Range Control
- Located on cantonment South of Range Road
- Covered AAR Shelter included in reservation
- Indoor latrine near training area



RGT-27 - Leadership Reaction Course



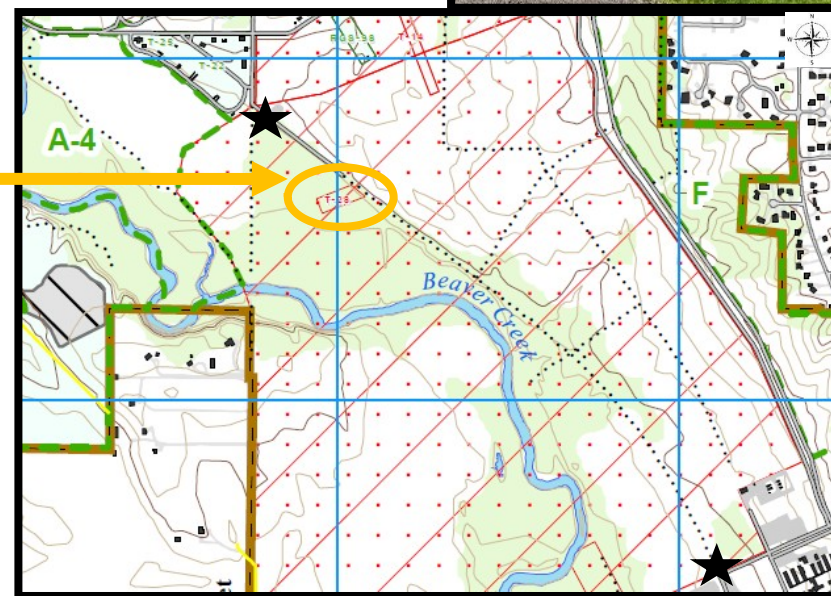
RGT-27 LDRSHIP CRS

RGT-28 - Live Fire Breach Facility



RGT-28 Live Fire Breach Facility

- For Military and Law Enforcement Only
- Located East in Training Area A-4 with an entrance/exit (★) in Training Area and Cantonment
- Used to train Soldiers on the skills necessary to breach windows, walls, and doors
- Used to train TTPs and explosive techniques not trained on any other type of facility
- 3 Stations: 9 x door breaching; 9 x window breaching; 3 x wall breaching
- *No Latrine on site*



RGT-50/51 - Shoot House and AAR BLDG 8510



RGT-50 SHOOTHOUSE

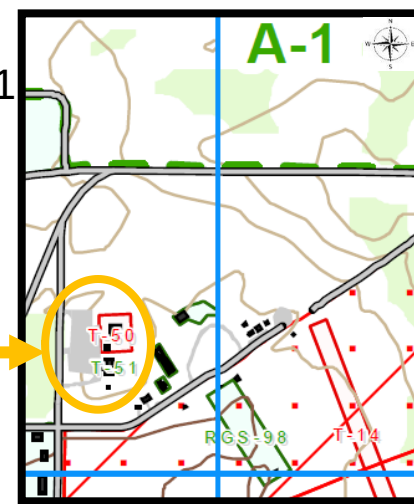


RGT-51 AAR BLDG8510



RGT-50/51 Shoot House and AAR Building

- For Military and Law Enforcement Only
- Live Fire Range or Training
- Live Fire Requires: MFR from Unit Commander stating the trainer meets qualifications to operate the weapon being fired per INGR 1-1
- Live Fire Requires: DRAW O5 signature, OIC/RSO Memo E6 and above, and copy of 581 from CDJMTC ASP
- Live Fire Requires: Range briefing to run range; needs to be scheduled through Range Control
- Located in North Training Area A4
- Standard Ammunition: 5.56mm, .45cal, 9mm, 12 gage
- AAR Building capacity is 86
- Indoor Latrine located in AAR Bldg 8510

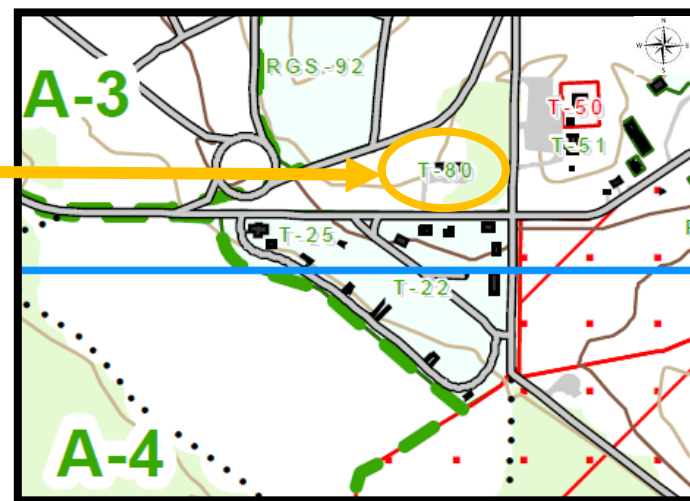


RGT-80 - Breach Training Area



RGT-80 Breach Training Area

- For Military and Law Enforcement Only
- Located in East of Training Area A-3
- Range is used for unit proficiency training
- Facility has 9 window openings and 4 doors
- Standard Ammunition: Blanks
- Capacity is 48
- *No Latrine on site*



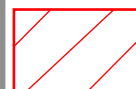
Training Areas

Training Areas

- A1-A4 light blue
- B1-B8 light yellow
- C1-C8 light green
- D1-D5 light orange
- E light purple – located SW corner of Cantonment
- F light gray

Areas A-D, F are for ground and air combat forces to practice movements and tactics as specified in the unit's army training and evaluation (ARTEP). User must obtain prior approval from the Iowa DIRAAVN and the Training Site Manager. Area E can also be used for Water Supply Training.

Training Area Gate on East end of Des Moines Avenue from Cantonment



Impact Area



Drop Zone

Main Gate Camp Dodge

Training Areas

CUI



Camp Dodge Joint Maneuver Training Center



Facility/Range Scheduler	515-252-4576
RFMSS Website:	https://ngia-rfmss.ngb.army.mil/iowa
Range Operations	515-252-4549
Logistics NCO	515-252-3495
Operations NCO/Officer	515-252-4690/4635
Security	515-252-4538
Facilities Issue/Clear	515-252-4175



Group Email all the above: ng.ia.iaarng.list.cdjmtc-fuops@army.mil

I Camp Dodge – Iowa National Guard
https://www.iowanationalguard.com/?page_id=599



Camp Dodge, Where 100,000 Iowans Entered Service



These hospital buildings at Camp Dodge, which the army announced Saturday will be closed as an induction center on July 1, are among those erected at a cost of two million dollars since World War II started. More than 100,000 Iowans have reported to Camp Dodge to begin army life since the summer of 1942.

