

Annual Report 2024



Four Geysers on the mountain
w. Beehive Geysir

Beehive Geyser: Painted by Geikie on his first trip to America in 1879 (catalogue no. FP.3.351).
Situating in the Upper Geyser Basin of Yellowstone National Park in the United States.



Image: from a Geikie watercolour

Contents

About us	4
Chairman's message	5
Collections	6
Exhibition highlights	10
Fundraising events	11
Education	12
Kathakali & Community Engagement	13
Buildings and premises	14
Supporting our work	15
Visitors and Venue Hire	16
Our Volunteers	17
Visit Haslemere	18
Marketing	19
Treasurer's report & Summarised accounts	20
The Museum shop	22
A gift in your will	23

About us

Our mission statement

'To forward and advance the study of Science, Literature and the Fine Arts by means of a well-equipped museum of Natural History and objects of art and of a scientific, literary and historical nature.' **Sir Jonathan Hutchinson FRS.**

Haslemere Museum is one of the oldest and most prestigious museums in the country. Set in the heart of Haslemere town in beautiful historic grounds, you can immerse yourself in a world of culture, art and knowledge as you discover the treasures that have captivated visitors for generations.

As a registered charity that does not receive any public funding, we rely on the generosity of our many supporters to help in safeguarding the museum's heritage and ensuring that it remains a valuable cultural and educational resource for all.

Our Museum Staff

Samantha Tabner ~ Collections Curator
Kay Topping ~ Education
Lois Proud ~ Community Outreach
Robert Neller ~ Collections/IT
Jo-Anne Buckrell ~ Research
Melissa Gay ~ Bookings/Finance
Carol Shrimpton ~ Membership
Sara Bevan ~ Retail/Volunteers

Shelley Jarrett-Tomes ~ Marketing
Nicholas Harding ~ Buildings/Premises
Alasdair Macdonald ~ Premises
Heather Matthews ~ Visitor Information
Margaret Waller ~ Saturday Reception
Adeleigh Buckrell ~ Saturday Reception
Jess Lawson ~ Housekeeping

Our Trustees



Melanie Odell MBE
Chairman



Clive Reay
Finance



Richard Sabin
Collections



Jonathan Pile
Premises



Jilly Storey
Education



Richard Manyon
Legal

Our Patrons

The Rt Hon. the Baroness Bottomley
of Nettlestone PC DL

Roger Dellar ROI, RI, DS

Sir Vernon Ellis

Prof. Richard Fortey FRS

Loyd Grossman CBE, FSA

The Rt Hon. Jeremy Hunt MP

Philip Jackson CVO DL

Sir Rob Margetts CBE FREng, FIChemE

Sir Andrew Motion FRSL

President Emeritus

Bernard Coe MA FRGS

Our Hon. Vice Presidents

Christopher Ashton-Jones

Sarah Bain BEM

Our Hon. Staff

Keith Clayton ~ Hon. Treasurer

Sue Porter ~ Hon. Secretary

External Consultants

Solicitor ~ Potter, Owtram and Peck

Auditor ~ Knox Cropper

Chairman's message

2024 as with every year boasted a full and interesting diary of events and exhibitions, much enjoyed by both locals and visitors alike. However, the year began on a sad note with the death in February of Bernard Coe, President Emeritus. Bernard has been a stalwart support for 30 years and served as Chairman, President and President Emeritus. On joining the Museum, he managed a Lottery bid to update the galleries and then set about streamlining the governance of the Museum. Bernard and his wife, Sybil, have been a constant support, and his common sense and good humour is missed by us all.



This year, our Museum commemorated the 100th anniversary of the death of Sir Archibald Geikie. It was a great opportunity to display more of his possessions and celebrate his life and work through new displays, spotlight exhibitions, a weekend of talks and an evening of Scottish dancing. More details on this can be found in the Collections Report, but all the staff and many volunteers are to be congratulated on putting together a first class event.

The work on Museum House continued. Renovations of this sort always take longer than you would hope, but we are indebted to staff and volunteers for their support and management of this worthwhile project. I would particularly like to thank Nicholas Harding for his hard work, not only on the house, but as our premises manager over many years. His efficient and good humoured manner has built excellent relationships with contractors, staff and volunteers alike and we are fortunate that he chose to spend this part of his working life with us.

Another project began in 2024: our long wished for sensory garden. We are greatly indebted to Transform Landscapes for their advice, hard work and sponsorship in bringing this area to life.

In the many years I have been involved with the Museum, 2024 is one of the very few years we have enjoyed a surplus. We are extremely grateful to benefactors whose generosity has made this possible. Without this support we could not continue with our vision and we are most thankful for the continued support we enjoy, from the penny drop to the larger gifts, everything makes the difference.

As this is the last annual report I will contribute to, I will take this opportunity to thank the staff for their total commitment, our volunteers for their dedication, and our benefactors for their support. It has been an absolute joy to be part of the Museum family. Despite ongoing global uncertainties and local challenges, our Museum continues to be an inspiration for all ages. As we celebrate 100 years since we moved to the High Street in 2026, we can be confident that our Museum is a fine example of learning, creativity, and inclusivity—fully prepared and ready to see future generations through another 100 years.

Melanie Odell MBE

Chairman

Collections

2024 was another productive and eventful year for the Collections Team, culminating in a museum-wide celebration in November honouring the life and legacy of the eminent Victorian geologist Sir Archibald Geikie.

We secured several successful grant applications, oversaw an inspiring range of staff and volunteer-led projects, and welcomed a number of notable acquisitions and purchases into the collection. Four main exhibitions were delivered, alongside a significant conservation initiative that further strengthened our stewardship of the collection.

Once again we would like to thank each and every one of our collections volunteers for your invaluable contributions throughout the year.

Centennial Celebration of the Life & Works of Sir Archibald Geikie (1835-1924)

In November, the Museum hosted a major two-day event celebrating the life and legacy of Sir Archibald Geikie—honouring his national and international contributions, his close ties to Haslemere, and the significance of the Geikie Archive, now under the Museum's care.

Held in collaboration with the North West Highlands Geopark, the programme featured globally streamed lectures by geoscientists and Geikie family members, alongside walks, tours, craft activities, a live art demonstration by Roger Dellar ROI RI PS ARSMA, and a special exhibition. We also hosted a lively Scottish ceilidh, with bagpiper Alexander Urquhart setting the tone and leading us into an unforgettable evening of music and dance.



Geikie retired to Haslemere in 1906 and was instrumental in shaping the Museum's future, serving as chairman of the Fundraising Committee and overseeing its move to the High Street. He remained a driving force until his death in 1924. The Museum now holds the most extensive collection of Geikie material in Europe, if not the world.

Our thanks to all who contributed to making this remarkable event such a success.



Collections

New acquisitions included the significant purchase of an original artwork, *A Family in a Cottage Interior*, by local Victorian artist George Smith—signed and dated 1867. This was part of the Bateman Art Project funding.



The museum was also successful in purchasing a fabulous watercolour of *Shepherds Hill* by Walter Tyndale, dating to 1889.

We extend our sincere gratitude to all our generous supporters which include; Arts Council England/V&A Purchase Grant Fund, Haslemere Town Council, The Haslemere Society, Parker Fine Art Auctions, an anonymous donor, and the support, in the form of a discount and waiving of carriage charge, made by Chris Beetles Gallery. A special thanks to Honorary Vice-President Sarah Bain for her tireless efforts to help secure the funding that made this important addition to the collection possible.

40
new
acquisitions
for the
permanent
museum
collection

Other notable donations included family archives of Sir Jonathan Hutchinson, our museum’s founder, and documents relating to Sir Archibald Geikie from their relatives. We also received an original portrait of Geikie by Roger Dellar ROI RI PS ARSMA, painted during a live demonstration at the Geikie event.

Research Projects

Thanks to a generous donation we began a project exploring the Peasant Artists, focusing on Godfrey Blount—chief designer of the Haslemere Peasant Arts group and founder of The John Ruskin School. Our collections researcher is investigating his 1920s ‘welfare talismans,’ decorative tiles and prints in the collection since the 1990s.

Right:
‘Welfare talisman’ by Godfrey Blount



A repackaging project improved the storage and preservation of the historic sampler collection through the use of archival card supports, funded by a grant from Museum Development South East.

A second grant from the Surrey Museum Partnership enabled the purchase of archival boxes to rehouse parts of the significant Geikie Archive collection.

Collections

The Geikie Letter Book Project concluded in December, completing a two-year effort to digitise Geikie's correspondence from 1869 to 1901, with the aim to make it accessible online for researchers and the public. Led by John Betterton, the project built on his earlier work digitising the wider Geikie letter collection, and included detailed research to identify letter recipients. The project worked alongside the ongoing Geikie letter transcriptions project produced by Elizabeth and Lucia. We thank John for his outstanding contribution to preserving and expanding access to this important archive.

In July, we welcomed two work experience students who contributed to the recording of animal skeletons—specifically a lion, Black Colobus monkey, and spotted hyena. Their work built on existing documentation, enhancing our understanding of the specimens' completeness and supporting ongoing collection research.

Several digitisation projects were undertaken to improve access and preservation of the collection. Hundreds of 'welfare talismans' prints on paper by local Victorian Arts and Crafts artist Godfrey Blount were scanned, alongside two major photographic archives. These included Victorian glass plate negatives dating from the late 1870s to the 1890s, by architect John Wornham Penfold, documenting Haslemere and its surroundings, and the Colin Fitcher collection of local photographs dating from 1930s to the 1980s, for which geographical locations were identified. This work will ensure long-term preservation and wider accessibility for future research and public engagement.

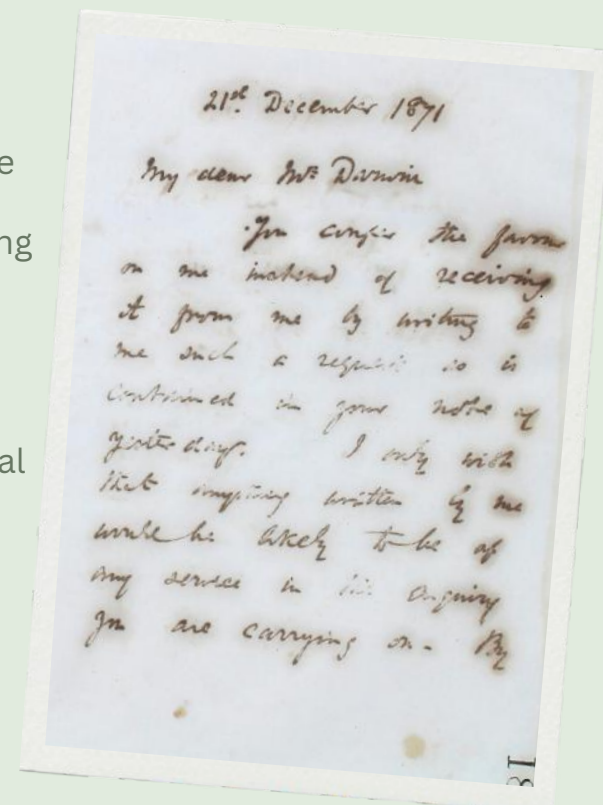
Transcription began on early 20th-century estate agent ledgers from Haslemere and the surrounding area. Work also continued on letters from Victorian geologist Sir Archibald Geikie dating from 1860s to the 1880s, featuring correspondents including Ramsay, Murchison, Peach, and Horne.

Dr June Chatfield and her team continue to do an amazing job in regularly updating our Flower Table.

Library



Our specialist library volunteers Marg, Margaret, Anna and Frances handled 120 email and in person enquiries, with some visitors returning regularly to pursue their own research. Topics included local houses, land boundaries, family history, and mother and baby homes. They also supported professional researchers investigating the history of Aldworth for its current owner, and the Museum's 1930s Stork experiment. Additional enquiries came from the National Taipei University of Technology regarding a local writer, and a Ukrainian resident researching peasant art costume. We said farewell to Anna midway through 2024 and were pleased to welcome Frances to the Library Team.



**Letter from
Geikie to Charles Darwin
dated 21 December 1871**

Collections

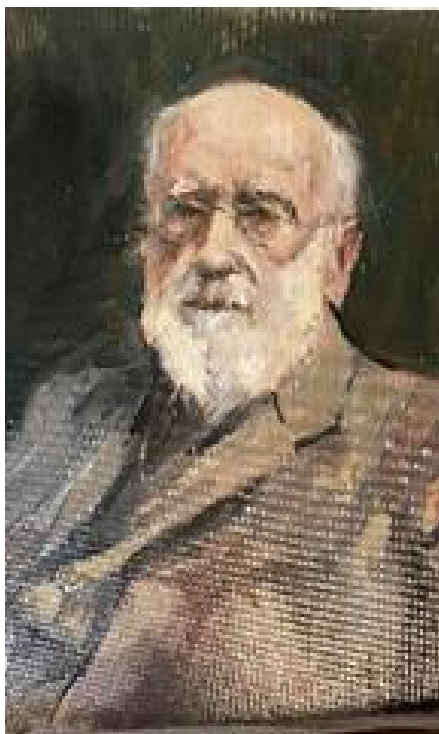
The Galleries

As a lasting legacy of our centennial celebrations, the Geikie Room underwent a major reinterpretation.

Updates included a new colour scheme, upgraded display lighting, and fully redesigned exhibits, along with interpretive panels highlighting Sir Archibald Geikie as a true polymath—writer, collector, geologist, artist, and pioneer.

The room now proudly displays a newly acquired portrait of Geikie (right), painted by our Museum Patron, Roger Dellar.

Special thanks to Geikie Archivist John Betterton for his expert contributions to this project.

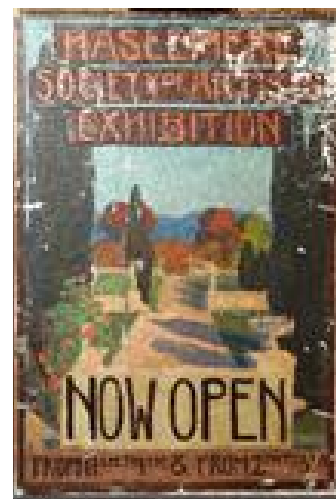


Haslemere Art Society Poster conservation

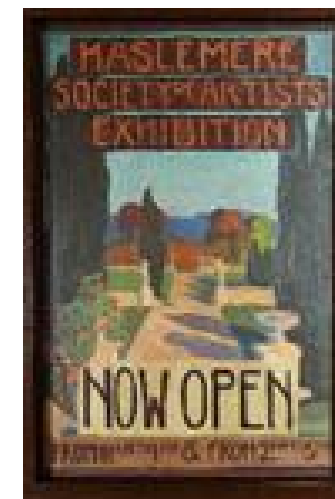
In October, easel painting conservator Alison Seed ACR completed the conservation of a rare oil-on-canvas poster advertising the early exhibitions of the Haslemere Society of Artists, founded in 1894 and now known as the Haslemere Art Society.

The poster underwent consolidation, retouching, stretching, and framing, and has now been beautifully restored to a stable condition, ready for display.

This conservation project was made possible thanks to the generous support of The Barbara Whatmore Charitable Trust, The Rowan Bentall Charitable Trust, Arts Society Haslemere, Arts Society Grayshott, and Haslemere Arts Society. Once again we thank Sarah Bain for her help with this project.



Before conservation



After conservation

The **geology drawers** in our gallery received a thoughtful refresh, thanks to the expertise of our palaeontological volunteer Andy.

Newly selected fossil specimens were added, interpretive text was updated, and clear drawer labels introduced—enhancing both the clarity and appeal of the display.

Exhibition highlights



Voyage Care LEGO model of Haslemere Museum

A LEGO model of the Museum was displayed after eight months of painstaking building. Supported by Voyage Care, people with learning and physical disabilities recreated the Museum in amazing detail. The model included the exterior and interior of the Museum, including the galleries and shop, as well as little LEGO people looking at exhibits and display cases.

The project was kindly sponsored by **Seymours** estate agents.



An Historic Childhood

In March we showcased a delightful selection of the museum's historic toys, games, and books.

This was one of our new temporary exhibitions, designed to bring rarely seen items from our collections out of storage and into the spotlight, offering visitors fresh opportunities to engage with our heritage.



The Art of Buildings

Courtesy of a local collector, the Museum displayed a selection of original artworks by the Victorian architect Herbert Hutchinson. These works relate to buildings he designed for clients in and around Haslemere. The son of the Museum's founder, Sir Jonathan Hutchinson, Herbert was a talented architect whose distinctive buildings still stand in the area today.



Stitching Stories: Haslemere Museum Samplers

Our popular summer exhibition showcased some of the museum's historic English embroidery samplers, dating from 1729 through the early 20th Century, including examples created by young boys. The samplers represented centuries of social and industrial change, class shifts and the development of educational theory alongside the growth of literacy amongst the working poor.



The Life & Works of Sir Archibald Geikie

To coincide with the Centenary celebrations in November, the Haslemere Room showcased Sir Archibald's watercolours, spanning his career. Donated by family throughout the 20th century—alongside notebooks, letters, photos, and memorabilia—they now form the Geikie Archive. His detailed works captured geological scenes, people, and architecture, offering a fascinating insight into his travels across Europe and America.

Fundraising events

Throughout the year, we host a variety of income-generating activities and pictured below are some of our special events.

The year began on a high note with a generous supporter organising a quiz and supper evening, which raised over £1,500 for the Museum.

Additional funds are raised through sponsorships, raffles, our pop-up café/bar, and the bottle stall at the Christmas market. In addition, we collected pre-loved clothes to sell at our Earth Day event, Plant Sale, Charter Fair, and a local car boot sale.

All of our events are made possible thanks to the dedication and support of our team of volunteers.

Skittles



Plant Sale



Dr Caroline Ikin:
Gertrude Jekyll and Munstead Wood



Joanna Zara:
From Maths to Millinery



Mark Hedges, Country Life:
The British love affair with
the countryside



Bonfire & Fireworks

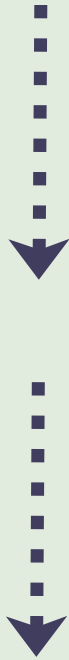
Education

Visitors
13k +

13%

Income
33.6k +

4%



School numbers and income were down slightly on the previous year, but this can be explained due to the additional funding and school visits received in 2023 as part of the Wild Escapes project.

D-Day 80 exhibition

As part of the national commemoration of D-Day 80, the HYPE* team created and curated an exhibition for our reception space. This highlighted the individuals who took part in the D-Day landings, and who are remembered on the Haslemere Town War Memorial.

**Haslemere Young People's Exhibition team*



Events

Although overall our events were not as well attended as last year, the following were very successful: Teddy Bears Picnic, Mill Cottage Farm and Santa's Parlour. In addition the dinosaur events linked to our Summer exhibition were very popular.

Kathakali

The Museum was delighted to participate in the Kerala Heritage Project, generously funded by the National Lottery Heritage Fund. Working with Barbara Vijayakumar and her husband Kalamandalam, we enjoyed a wonderful day with Liphook Guiding, creating masks and participating in a Kathakali drama workshop, followed by a vibrant, fast-paced, and at times exuberantly loud Kathakali performance by Kalamandalam. As part of the project, the masks were later displayed at the Phoenix Centre, Bordon.



Another strand of the project involved training sessions delivered by Lois Proud to volunteers from various organisations, as well as the recording of personal recollections from members of the Kerala community during an afternoon at the Museum.

Grayswood School also took part in a day of Kathakali mask-making and drama activities. In addition, Kay Topping wrote an article on Ancient Egyptian symbolism, highlighting the historical trade links between Ancient Egypt and Kerala.

In October, we were treated to a full Kathakali performance by members of the Kala Chethena Kathakali Company. The lecture hall was transformed to showcase the vibrant colour and spectacle of this traditional dance-drama form. Visitors left with a deeper appreciation and lasting impression of a fascinating and distinctive culture.

Community Engagement

The Education Department continued to deliver object handling sessions, primarily through outreach to a diverse range of community groups and care homes, along with a smaller number of family sessions held within the museum.

Additionally, the Community Engagement Officer actively participated in various local community and heritage events, representing the museum through information stands and, in some instances, contributing to event organisation.



Building and premises

The early part of 2024 saw no major projects, however, as always in our listed building there is always redecoration work to be done inside and out, with the Terrace Room and Haslemere Room requiring a refresh between each exhibition.

In addition, there is always ongoing maintenance of the services, including lighting, heating and plumbing. In 2024 the lighting in the Lecture Hall was upgraded. The old florescent tubes were removed and replaced with state of the art aesthetic power efficient LED units that enable us to illuminate separate zones. In addition to this, we installed coloured up lighting to enhance the ambience of the room for special events.

Our extensive outdoor spaces were beautifully cared for throughout the year by our wonderful grounds and garden volunteers, and we thank them all for their dedication.

Towards the end of the year we undertook the refurbishment of the Geikie Room in preparation for our celebrations of the centenary of Sir Archibald's death.

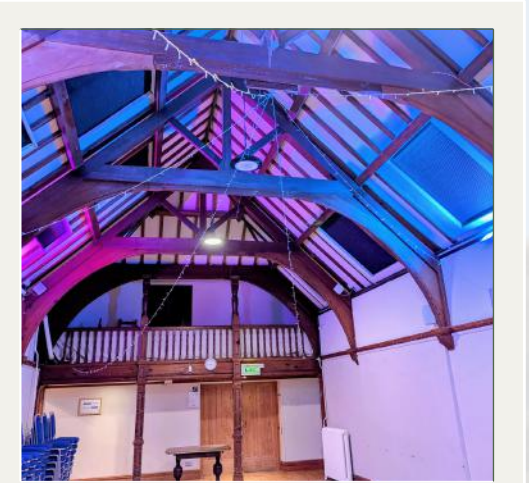
Later in the year two major projects were started:



The Sensory Garden. We are very grateful to our Corporate Partner, Transform for undertaking the design and grounds work for this project. The Sensory Garden, which will open in 2025, is located to the right of the meadow as you go down towards the wooded area and boardwalk.



The renovation of Museum House requires our premises team to work with outside contractors. To enable us to rent the property to provide income for the Museum, major work was needed. Due to the age and listing of the building we have had to involve building regulations and listed building officers from Waverley Borough Council, a structural engineer, and a fire officer. The work, that will continue into 2025, includes remodelling of the kitchen and bathroom, along with other essential renovations.



Lecture Hall Lighting



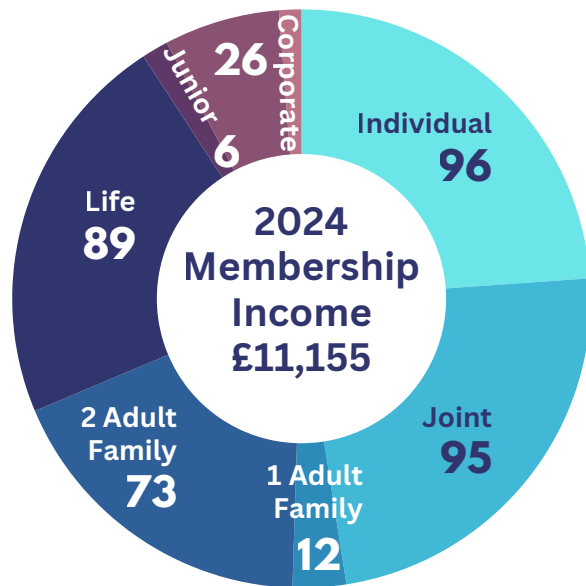
Early stage of Sensory Garden

Supporting our work

Membership declined from 420 to 402 over the year, partly due to a database clean-up.

In February, we launched our Museum Friend Scheme—a monthly subscription offering enhanced benefits based on the chosen level of support. While uptake has been modest so far, it represents a wonderful opportunity for those who are able to deepen their support and enjoy added perks in return.

Our Junior Member materials and Gift Membership packs had a much needed makeover! With refreshed designs and updated content, they're more engaging than ever. Our Membership Area went live on the website, giving access to exclusive content and special updates.



We thank all our members for their support. The current database is held solely for Museum use. Anyone wishing to see their record may do so by application to the Membership Secretary. This is in accordance with the Data Protection Act 2018.

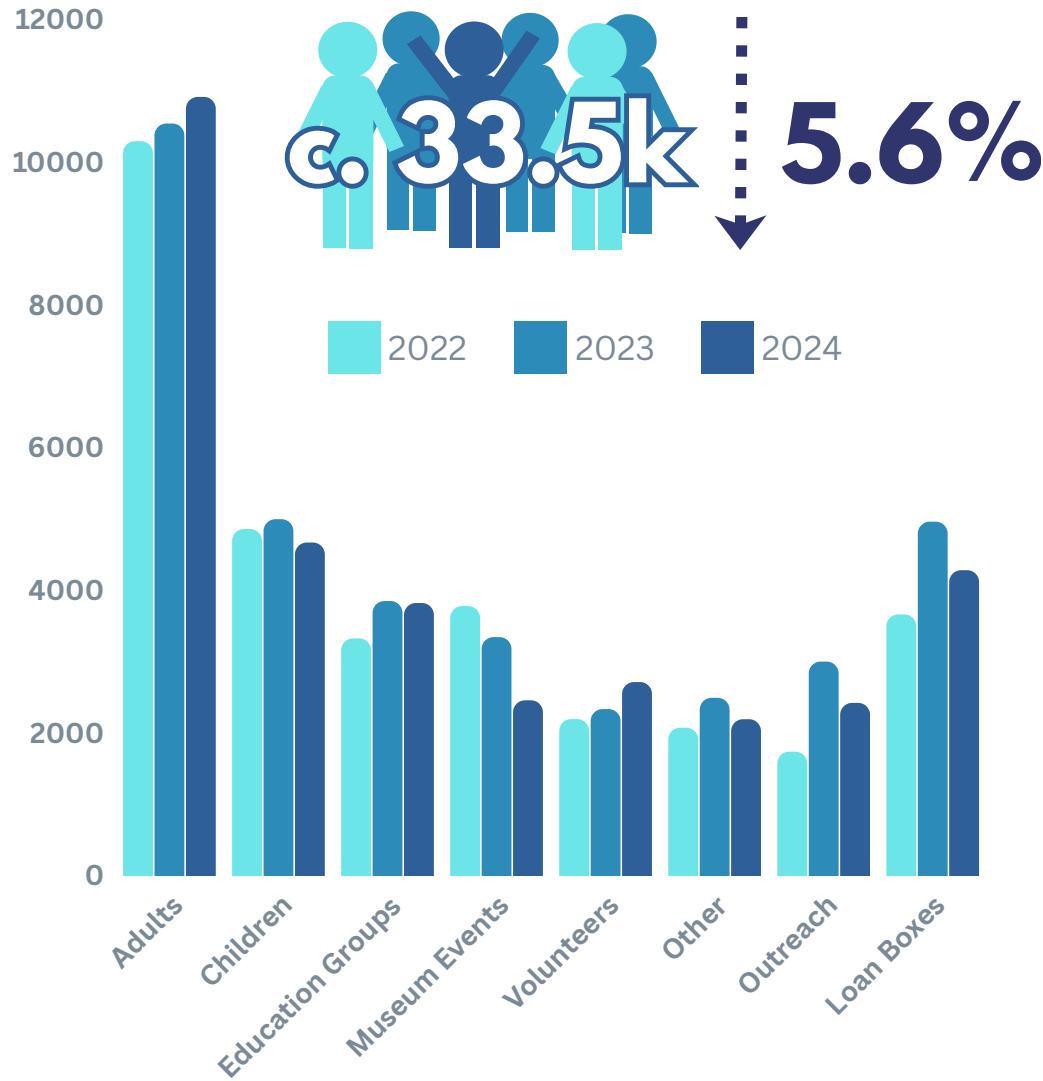
Corporate Partnership* offers companies a meaningful way to support their community while enjoying valuable benefits in return — from enhanced brand visibility to a lasting positive social impact. We are deeply grateful to our partners for their vital role in helping us preserve our unique collections and ensuring we remain at the heart of Haslemere’s cultural vibrancy.

- ACEUM
- A P CUNDY & CO.
- MR PHIL BATES
- BURLEY GEACH SOLICITORS
- CW DODGE
- CLARKE GAMMON
- COUCHMAN HANSON SOLICITORS
- DAVIDS OF HASLEMERE
- GARDNER THORPE
- GRANTLEY SALES & LETTINGS
- GRAYSHOTT POTTERY
- THE HASLEMERE BOOKSHOP
- THE HASLEMERE CELLAR
- HASLEMERE METHODIST CHURCH
- HASLEMERE TRAVEL
- KEATS
- KNOX CROPPER
- MULBERRY PROPERTY INVESTMENT LTD
- ONE-WORLD DESIGN ARCHITECTS
- POTTER OWTRAM & PECK
- THE REMARKABLE STUDIO
- MR & MRS V RICCI
- RICHMONDS GROUND CARE
- ROGER TOPPING GARDEN MACHINERY
- SHEEN BOTANICAL LABELS LTD
- STRICKLANDS DENTAL FITNESS CENTRE
- TRANSFORM LANDSCAPE DESIGN & CONSTRUCTION LTD
- TRAVISS & CO LTD
- VANTAGE PUBLISHING LTD



**some part year*

Visitors and Venue Hire



3
Haslemere Events

14
Lectures

3
External Exhibitions

17
Meetings

3
Theatre & Concert Performances

4
Private Parties

1
Wine Tasting

1
Wedding Reception

1
Funeral Reception

1
Antiques Valuation

5
Study days & art classes

Our Volunteers

We say this every year: the Museum simply couldn't function without our incredible volunteers! Throughout 2024 they contributed an unbelievable 7459 hours across all areas of the Museum: welcoming the public, working in the shop, assisting Library researchers, cataloguing our collections, helping out at events, maintaining the garden and cleaning the galleries.

The number of registered volunteers has increased to around 130 across the year. Throughout 2024 we welcomed four young people for week-long work experience placements, covering everything from general office experience to sorting animal bones with our Collections team! We also hosted a Duke of Edinburgh Gold Award candidate this year, who volunteered in our shop and has continued to volunteer into 2025.

To celebrate our volunteers' hard work, we welcomed everyone to a Summer party in June, where they were treated to a special tour of our Collections Stores. At Christmas we held a festive drinks party which also included an introduction to our Library and some of its rich resources.

7459
volunteer hours
worked

130
volunteers
+18%



4 work
experience
placements

2024 began on a roll with all our usual events back up and running and some new ones to look forward to!

The Charter Fair made a triumphant return over the early May bank holiday weekend, and despite the unpredictable weather, it was a huge success. VH played a key role from the outset – managing all stall holder enquiries and handling social media promotion. On the day itself, we were on the ground from start to finish, assisting with stall setup in the morning, through to helping pack everything away at the end.



Eight new walks were developed and confirmed in collaboration with walk leaders. The festival brochure was written, designed, and officially launched, accompanied by a series of press releases distributed to relevant publications, websites, and social media platforms. As in previous years, VH efficiently handled all event bookings and oversaw the ongoing re-stocking of printed programmes across distribution points.

The Walking Festival was a great success, with strong attendance across all walks. Participants thoroughly enjoyed the experiences, and the event successfully attracted visitors from across the country, bringing positive attention and footfall to the town.



For the 2024 Food Festival, VH was responsible for organising stallholders and coordinating the press releases. VH also managed all final marketing for the event and served as the main point of contact for stallholders on the day. A total of 42 stallholders participated, offering a wide variety of food and drink options. Despite less-than-ideal weather conditions, the event was well attended, had a fantastic atmosphere, and was considered a great success.



VH was also involved in organising and leading all the usual annual events, including the Easter Trails during the April holidays, the Teddy Bears' Picnic in August, and the Halloween event in October. In addition, this year VH supported the Geikie Weekend by advising on the organisation of previous themed weekends and assisting in securing entertainment for the evening.

Thanks to everyone who made 2024 so exciting and successful. Our job wouldn't be possible without the continued help and support of the museum, its staff and volunteers!

Marketing

Social media followers



Facebook



Instagram



Twitter

Website visits



Paid ads



Mass emails

- 6 emails to 330 schools to forward to parents
- 14 emails to 523 past event attendees
- 26 emails to 496 members
- 7 emails to c.230 Geikie centenary invitees

What's On booklets



Event posters /flyers created

59

Website pages created/ revised

c.30

Articles published



New booklets created



Treasurer's report

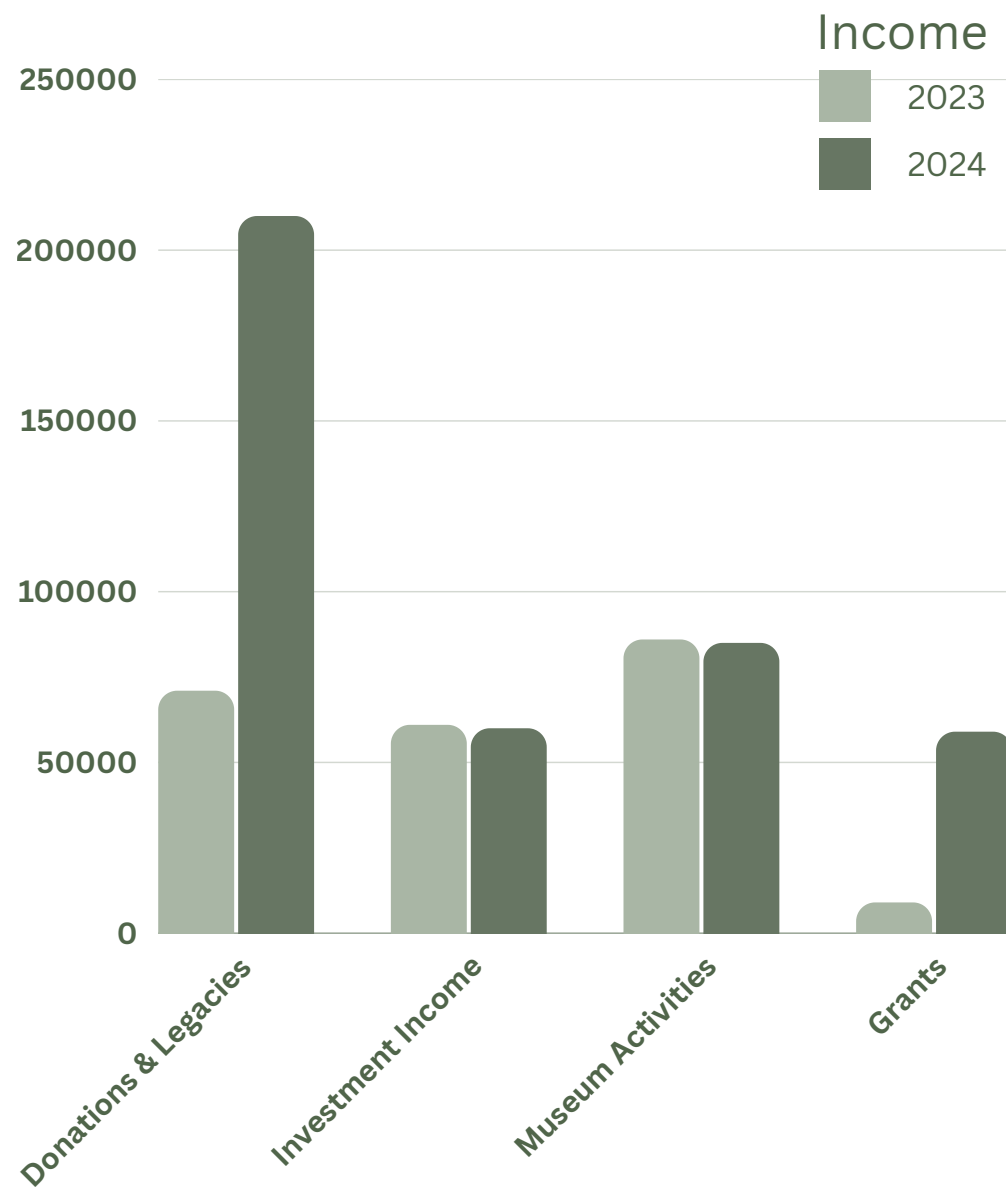
Total income of the Museum in 2024 increased significantly to £413,860 which compares with £226,611 achieved in 2023. There were two principal reasons for this increase in income. Firstly, a substantial donation of £140,000 was received from the Kate Livingstone Trust, increasing total donations from £53,931 to £184,554. Secondly, a grant of £47,484 was received from the Heritage Lottery Fund. This grant has been provided to assist in funding various activities, including an exhibition to celebrate the Museum's one hundred years on Haslemere High Street which will take place in 2026.

Total expenditure fell slightly to £349,137 compared with £358,121 in 2023. Staff costs comprised 49% of the total (2023- 46%), followed by repairs and maintenance costs (14%), energy costs (6.5%) and costs relating to the care and maintenance of collections (5%).

The Museum generated a surplus before investment gains of £64,723 (2023- deficit of £131,510). Unrealised investment gains for the year amounted to £44,707 (2023- £147,208) with the result that net income for the year amounted to £109,430 (2023- £15,698).

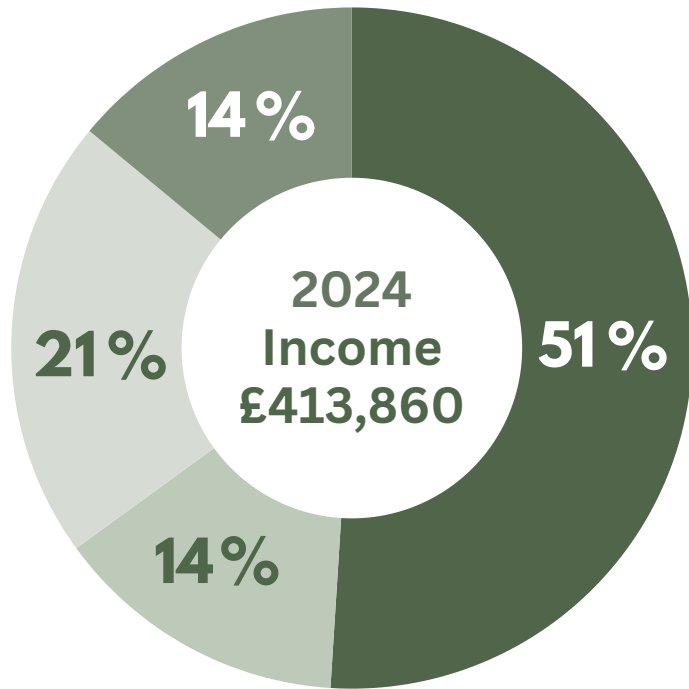
Net assets of the Museum at the end of 2024 amounted to £2,304,683. Included within this figure investments and cash balances totalled £2,074,597.

Summarised accounts

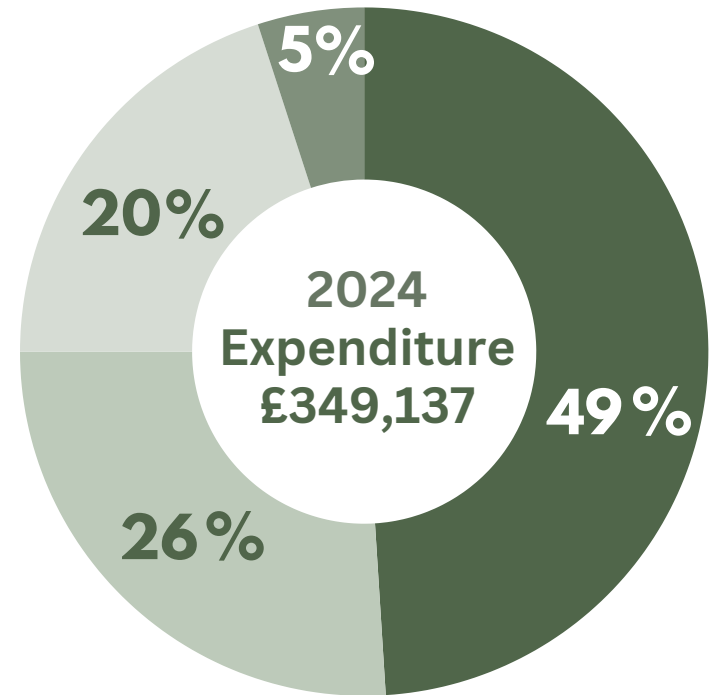


Summarised accounts

Money in



Money out



The Museum shop



We offer a wide range of educational toys, cards, gifts, and books to complement our collections and exhibitions.

Every purchase directly supports the care of our collection and the upkeep of our facilities

A gift in your will

A legacy for future generations

Why you can make a difference

We are a completely independent Museum and, as such, we have to work very hard to secure the funding we need to preserve and develop our unique collections, as well as our historic buildings and grounds. It costs about £700 each day to stay open and ensure that we are here for all our visitors and users.

We need to plan for the future to make sure that we inspire the next generation of scholars including natural historians, geologists, textile designers, Egyptologists and many more. The Museum is ideally placed to encourage lifelong enthusiasm.



The need for bequests and legacies to continue our work is vital

Bernard Coe became actively involved with the Museum on retiring from work. He believed it to be “a treasure” which “greatly contributes to the vibrancy and life of the town and its visitors.” Bernard maintained that, “The Museum deserves all our support, which is why I chose to remember it with a gift in my will.”

Penny Hollow was a lifelong friend of the Museum and she supported us for over forty years as a trustee and volunteer. After her death, Penny continues to play an important and active part in the life of the Museum and its visitors, thanks to the generous gift she left us in her will.

Please help us preserve our priceless heritage

How to remember us in your will

Please ask your solicitor to include us in your will, or amend your existing will with a codicil. You can find a list of local solicitors on our legacy webpage at haslemeremuseum.co.uk/legacy.

There are different types of gift that you can make:

- A specific sum of money
- A residual gift (a percentage of what is left once your loved ones have been provided for)
- An item that could be sold, such as jewellery, a painting or shares

There may be tax advantages to leaving us a legacy because we are a charity. Your solicitor or financial adviser will be able to advise you.



Our Museum has touched many visitors for over 125 years. If we have made a difference to you, or to a loved one, or if you want to make a difference for others, we would ask that you remember us by leaving a legacy.

Visit haslemeremuseum.co.uk/legacy

If you do decide to support us, it would be wonderful if you would let us know so we can keep in touch about the ways such gifts make a difference and thank you for your kindness. There is no obligation to inform us but if you would like to, please use the link on our legacy webpage at haslemeremuseum.co.uk/legacy

Haslemere Educational Museum

78 High Street, Haslemere, Surrey, GU27 2LA



www.haslemeremuseum.co.uk

A charity registered in England and Wales (Charity number 1071244)

and a company limited by guarantee, registered in England and Wales (Company number 3203702)

Registered office: 78 High Street, Haslemere, Surrey, GU27 2LA