



Huxlow Academy

Ambition • Respect • Pride

TRANSITION TO KEY STAGE 4 2025

INFORMATION FOR STUDENTS



Huxlow Academy is part of the Tove Learning Trust –
a highly successful and growing multi-academy trust



Contact Information

Charlyne Maubert (Head of MFL) - c.maubert@huxlow.northants.sch.uk

Richard King (Head of Maths) - r.king@huxlow.northants.sch.uk

James Horsley (Head of English) - j.horsley@huxlow.northants.sch.uk

Jade Stubbs (Head of Design Technology) - j.stubbs@huxlow.northants.sch.uk

Anthony Parish (Head of Science) - a.parish@huxlow.northants.sch.uk

Matthew Davies (Head of History) - m.davies@huxlow.northants.sch.uk

Michael Yewman (Head of Geography) - m.yewman@huxlow.northants.sch.uk

Sam Letts (Head of Physical Education) - s.letts@huxlow.northants.sch.uk

Martin Drage (Head of Computing and Business) - m.drage@huxlow.northants.sch.uk

Kendria Letts (Head of Performing Arts) - k.letts@huxlow.northants.sch.uk

Jane Watson (Deputy Head - Social Studies) - j.watson@huxlow.northants.sch.uk

Jacqueline Holmes (Head of Sixth Form) - j.holmes@huxlow.northants.sch.uk



Introduction

Introduction to the Options Process

This is an exciting milestone in your education - for the first time, you have the opportunity to shape your learning by selecting subjects that interest you. While part of the curriculum in Years 10 and 11 remains fixed, the remainder of your timetable will be made up of subjects you choose, including GCSEs and vocational qualifications.

The purpose of this booklet, along with our 'Moving to KS4 Evening', is to support you in making informed and ambitious choices that align with your future goals.

Seeking Advice

Choosing the right subjects is an important decision, and you do not have to make it alone. Seek advice from those who can guide you, including:

- Your tutor
- Subject teachers
- Heads of department
- Head of Year
- Parents/Carers
- Older students already studying these courses.

Your Journey Ahead

At Huxlow Academy, we are committed to making your learning experience in Years 10 and 11 both enjoyable and rewarding. Your choices should reflect your interests and aspirations, challenge you academically, and equip you with essential life skills for your future beyond school.

What's Inside This Booklet

In the following pages, you will find:

- An overview of the curriculum structure for Years 10 and 11, including the subjects that all students will study and the possible paths that are available to choose from.
- A summary of the optional subjects available, categorised into three themes:
 - Expressive Pathway
 - Applied Pathway
 - Academic Pathway
- A timeline outlining key deadlines for making your final decisions.

Take your time, explore your options, and make choices that will inspire and motivate you in the years ahead!

The rest of this booklet provides detailed information about all of the courses available to you in Years 10 and 11. It is important to read through each section carefully to fully understand your options and the paths offered. Be sure to access the online version of this booklet, as you will need it to guide your decision making process

Once you've made your choices, you will submit your options through a Google form.

The traditional A* - G grading system has been replaced with a numerical scale from 9 to 1, where 9 is the highest grade available.

Old GCSE Grade (A-G)*	New GCSE Grade (9-1)
A*	8 - 9
A	7
B	6
C	4 - 5
D	3
E	2
F - G	1
U (Unclassified)	U (Unclassified)

Non-Examined Assessment (NEA)

While most qualifications are assessed solely through final exams, some include a **Non-Examined Assessment (NEA)** component. This means that a portion of the final grade is determined by coursework or practical work completed over the two years, rather than just exams.

The following subjects include an NEA element:

- Art
- Dance
- Design Technology
- Drama
- Engineering
- Food Preparation & Nutrition
- Graphic Communication
- Health and Social Care
- Music
- Photography
- Sport
- Travel and Tourism

NEA tasks are completed under supervised conditions but outside of formal exams. These may include coursework, practical projects, performances, or extended assignments.

PSA Windows

Non-examined assessments are completed within specific **PSA (Pre-Standardisation Assessment) windows** set by exam boards. These windows ensure that students have designated periods to complete their NEA tasks under appropriate conditions. It is essential that students meet these deadlines, as late or incomplete submissions may impact their final grade.

More details on the NEA requirements and PSA windows for each subject can be found in the subject sections that follow, along with links to the official GCSE and BTEC specifications.

The Year 10-11 Curriculum

Our goal is to provide all students with a **broad and balanced curriculum** that equips them for further education, the world of work, and adult life. We believe that our curriculum offers the flexibility needed to support the individual strengths and aspirations of every student in Years 10 and 11.

While students have the opportunity to choose some of their subjects, certain **core subjects** are compulsory. These are listed below:

Core Curriculum Subjects (Years 10–11)

<u>Subject</u>	<u>Description</u>
PSHE	Delivered once a week. As part of a whole-school approach, PSHE education develops the qualities and attributes students need to thrive as individuals, family members, and members of society.
English (Language & Literature)	All students take both GCSE English Language and GCSE English Literature. Together, these are worth two GCSEs.
Mathematics	All students take a GCSE in Mathematics. There are two tiers of entry: Foundation and Higher.
Science	All students study Combined Science, taught for six hours per fortnight. This is worth two GCSEs and is offered at two tiers.
French	The majority of students take GCSE French, taught for five lessons per fortnight. There are 2 tiers.
Core PE	This is a non-examined subject. Students receive two hours of Physical Education per week.

Choosing Your Options: Three Pathways to Success

To help you build a broad, balanced, and ambitious curriculum, we offer three option pathways. Each pathway is designed to support different interests, strengths, and future aspirations, whether you are aiming for further academic study, vocational training, or a specific career.

By choosing subjects from a range of areas, you will develop a well-rounded skill set that prepares you for your next steps after Year 11—whether that is sixth form, college, an apprenticeship, or beyond.

Option Pathways Overview

Pathway	Description	Purpose
Academic Path	Subjects focused on theoretical understanding, extended knowledge, and academic skills.	Ideal for students aiming to study A-Levels and pursue university or other academic routes.
Expressive Path	Subjects that encourage creativity, expression, and the development of artistic or performance-based skills.	Best suited for students with interests in the arts, media, or design-related fields.
Applied Path	Vocational and practical subjects that focus on real-world skills, project-based learning, and workplace understanding.	Supports students interested in apprenticeships, technical education, or career preparation.

The Academic Path

Option 1	Option 2	Option 3
History	Art	Sociology
Geography	Art Graphics	IT
BTEC Sport	Design Technology	History
Business	Dance	Geography
Photography	Drama	Business
		Statistics

The Expressive Path

Option 1	Option 2	Option 3
Music	Art	History
Photography	Art Graphics	Geography
Sociology	Design Technology	Geography
BTEC Sport	Dance	IT
	Drama	Sociology
	Health & Social Care	

The Applied Path

Option 1	Option 2	Option 3
Business	Drama	Engineering
BTEC Sport	Health & Social Care	IT
Geography	Design Technology	Business
Photography	Hosp & Catering	Travel & Tourism
	Art Graohics	Sociology

Each path offers a variety of subjects to suit different learning styles and goals. In the pages ahead, you'll find more information to help you make informed and confident decisions.

Options Timetable

The aim of the **Moving to KS4 Evening** is to provide students and parents/carers with a clear overview of the curriculum routes available in Years 10 and 11, and to explain the options process in detail.

Parents and students will be asked to complete their option choices together during the event or from home using the **Options Form provided**. Final choices must be submitted by **Monday 5th May 2024**.

Option Blocks and Subject Availability

Option blocks will be created **after** students have submitted their choices, based on overall preferences and timetabling needs. Please note:

- Not all subject combinations may be possible due to timetabling constraints
- While we make every effort to accomodate all students' first choices, this cannot be guaranteed.
- If a subject is **undersubscribed**, it may be withdrawn
- If a subject is **oversubscribed**, and additional classes cannot be added, places will be allocated using the following criteria in rank order.

1. **Students with an identified SEND** (Special Educational Needs or Disabilities)
2. **Students unable to access one or more other option choices** due to how the option blocks are constructed
3. **Students who received their first-choice subjects but cannot be placed in their reserve choice** due to block structure
4. **Remaining students** will be entered into a random selection (lottery system)

If we are unable to offer a student all of their selected subjects, we will contact parents/guardians directly to discuss alternative options.

Key Dates - Year 9 Options Process

Date	Activity	Details
23/04/2025	Year 9 Options Assembly	Introduction to the Options Process for all students.
24/04/2025	Moving to KS4: Presentation & Options Evening	Parents and students meet subject leaders and discuss option choices.
05/05/2025	Final Deadline for Option Choices	Completed paper form to be signed by student, parent, and form tutor.
30/06/2025	Letter to Parents	Confirmed and validated option choices shared with parents.

Expressive Options



OCR GCSE Art, Craft and Design (J170)

What will the course involve?

- You will create a portfolio of work based on the themes set by your teacher.
- You will experiment visually with a range of media to explore your theme before you resolve it into a personal and meaningful final piece.
- You will work in a range of wet and dry media including clay and print making, but ultimately the media you use for your final piece depends on what direction you have taken your experiments.



OCR	Content	Grade Percentage
Component 1 - Portfolio	Portfolio	60%
Component 2 - Externally Set Exam	Theme set by exam board and 10 hour invigilated exams over several days	40%

What will I learn ?

You will:

- actively engage with the creative processes of art, craft and design in your chosen title(s) and area(s) of study using a wide variety of media
- become effective and independent learners through the study of art, craft and design and develop critical understanding
- develop your creative, imaginative and intuitive capabilities when exploring, creating and producing images, artefacts and products
- become confident in taking risks, learning from your experiences through exploring and experimenting with ideas, processes, materials and techniques
- develop and refine your ideas, supported by an understanding of your context and what has informed them
- show an understanding of the purpose, intentions and functions of art, craft and design, and how this impacts the direction of your work

Why should I study this course ?

You enjoy art and have a keen interest in a career in creative media. You are willing to put the effort in and enjoy the creative freedom and developing your own responses to a theme. You like to take creative risks.

Further Education links

A– Level Art / Photography / Visual communication

Career Links

Graphic Designer, Illustrator, Animator, Fashion Design, Interior Designer, Art Director, Concept Artist, Photographer, Printmaker, Advertising, Computer Graphics, Architect

Where can I find out more ?

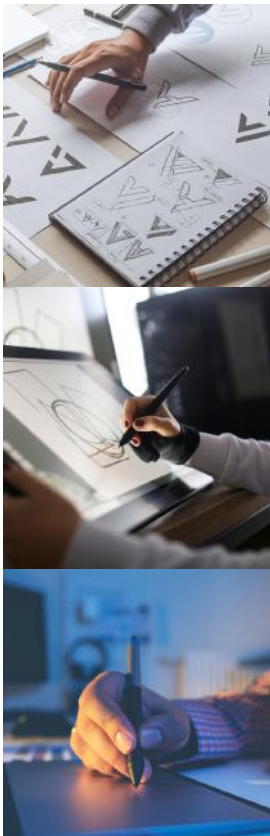
Talk to Mrs Stubbs - Head of DT, Art and Photography

www.ocr.org.uk/qualifications/gcse/art-and-design-j170-j176-from-2016

AQA GCSE Art & Design: Graphic Communication (8203/c(x))

What will the course involve?

- You will create a portfolio of work based on the themes set by your teacher.
- You will experiment visually with a range of media to explore your theme before you resolve it into a personal and meaningful final piece.
- You will work in a range of wet and dry media to produce typography and packaging through a variety of methods, but ultimately the media you use for your final piece depends on what direction you have taken your experiments.



AQA	Content	Grade Percentage
Component 1 - Portfolio	Portfolio Project	60%
Component 2 - Examination	Theme set by exam board and 10 hour invigilated exams over several days	40%

What will I learn?

You will:

- actively engage with the creative processes of graphic communication in your chosen title(s) and area(s) of study using a wide variety of media
- become effective and independent learners through the study of graphic communication and develop critical understanding
- develop your creative, imaginative and intuitive capabilities when exploring, creating and producing images, typography and products
- become confident in taking risks, learning from your experiences through exploring and experimenting with ideas, processes, materials and technology
- develop and refine your ideas, supported by an understanding of your context and what has informed them
- show an understanding of the purpose, intentions and functions of graphic communication, and how this impacts the direction of your work

Why should I study this course?

You are creative and imaginative. You love design and enjoy experimentation.

Further Education links

A– Level Art / Photography / Graphic Design

Career Links

Graphic Designer, Illustration, Product Design, The Arts.

Where can I find out more?

Talk to Mrs Stubbs - Head of DT, Art and Photography

www.aqa.org.uk/subjects/art-and-design/gcse/art-and-design-8201-8206/subject-content/graphic-communication

www.aqa.org.uk/subjects/art-and-design/gcse/art-and-design-8201-8206/subject-content/photography

AQA GCSE Dance 8236

What will the course involve?

The AQA GCSE Dance specification focuses on the aesthetic and artistic qualities of dance, emphasising the symbolic use of movement to express and communicate ideas and concepts through performance, choreography, and appreciation. Students will study a range of dance styles and style fusions, and apart from the performance element, they can choose any style in which to choreograph.

Why study dance?

Studying dance develops creativity, teamwork, confidence, critical thinking, self-discipline, physical health and the ability to work collaboratively. These are all beneficial in any 21st century career path and quality of life.



Components	Content	Grade percentage
1	<i>Internally assessed, externally moderated</i> *Performance; solo *Performance; duet *Choreography	60% 10% 20% 30%
2	<i>External exam</i> 1h 30m paper. 80 marks *Knowledge and understanding of choreographic processes and performing skills *Critical appreciation of own work *Critical appreciation of professional works	40%

The Course

The course is made up of 2 components;

- Component 1 requires a replicant performance of 2 set phrases set by AQA, we study 'Breathe' and 'Scoop'. Alongside this, students perform a duet choreographed specifically to meet the AQA assessment criteria. Lastly, students will be provided with 5 stimuli to choreograph their own piece of work in a style of their choosing.
- Component 2 is a written exam paper. The exam paper is split into 3 sections;
 - Section 1 - knowledge and understanding of performance and choreography skills.
 - Section 2 - appreciation of own performance
 - Section 3 - appreciation of 6 professional works; A Linha Curva, Artificial Things, Within Her Eyes, Infra, Emancipation of Expressionism and Shadows.

Career Links

Teacher, Dance Scientist, Personal Trainer, Movement Therapist, Performer, Youth worker, Producer, Health Practitioner.

Where can I find out more?

Talk to Mrs Letts

Visit AQA GCSE Dance 8236

www.aqa.org.uk/subjects/dance/gcse/dance-8236

EDEXCEL GCSE Design & Technology (Timbers)

What will the course involve?

You will be working on a variety of projects to develop your iterative design process across both Graphic Design and Resistant Materials. Throughout you will learn new skills within design and making, which you will be able to showcase in a large piece of Non-Examined Assessment (NEA). This NEA must include a multi material practical outcome of a product which solves a problem. Examples of the set brief are: Outdoor Eating / Theme parks.

We encourage students to use a variety of tools, machinery and techniques within the workshop/computer suites with industry standard machinery and software.



EdExcel	Content	Grade Percentage
Component 1 - Written Paper	Core Content - Design Timber (1 hour 45 mins)	50%
Component 2 - Non-examined assessment	Theme set by exam board - Written work and practical outcome	50%

What will I learn ?

You will:

- learn about the design world.
- learn where materials come from and how they are formed
- learn how design is influenced by the past and the future.
- material properties and experiment with wood, plastic and metals.
- experiment and become competent with a wide variety of tools and equipment.
- develop your creativity into a variety of products.
- develop an understanding with Computer Aided Design.
- learn how to use the laser cutter / plotter cutter and 3D printer independently
- go through the design process, from brief, through research, design, prototype, make and evaluate

Why should I study this course?

The study of design and technology prepares students to participate confidently and successfully in an increasingly technological world. It helps students to be aware of, and learn from, wider influences on design and technology, including historical, social/cultural, environmental and economic factors.

Further Education links

A Level Design and Technology/Level 3 Construction and Carpentry

Career Links

Product Design, Architecture, Engineering, Carpentry

Where can I find out more?

Talk to Mr Meadowsmith/Mrs Stubbs

<https://qualifications.pearson.com/en/qualifications/edexcel-gcses/design-and-technology-9-1-from-2017.html>

OCR GCSE Photography

What will the course involve?

Photography focuses on the technical aspects of design, looking at light-sensitive materials and digital methods of development and production to create static and moving images. You will explore a variety of areas but mainly focus on Portraiture and Studio Photography developing a range of concepts and prototypes to suit a variety of situations and briefs.



OCR	Content	Grade Percentage
Component 1 - Portfolio	Portfolio project	60%
Component 2 - Externally Set Exam	Theme set by Exam board and 10 Hour invigilated exam over several days	40%

What will I learn ?

You will:

- acquire and develop skills, knowledge and understanding through the application of traditional or digital techniques and processes specific to your chosen area(s) of study of Photography
- explore practical and relevant critical and contextual sources such as the work of historical and contemporary photographers and the different purposes, intentions and functions of photography as appropriate to their own work.
- demonstrate the knowledge, skills and understanding through area(s) of study relevant to Photography.

Why should I study this course?

Studying photography as a GCSE course can offer students a range of benefits, both personally and academically including: Creative expression, Visual Literacy, Technical skills, Critical thinking, Observational skills and Portfolio building for post 16 options

Further Education links

A Level Media/Photography

Career Links

Photographer, Film making, Editor, Film production, Camera Operator

Where can I find out more?

Talk to Miss Knighton

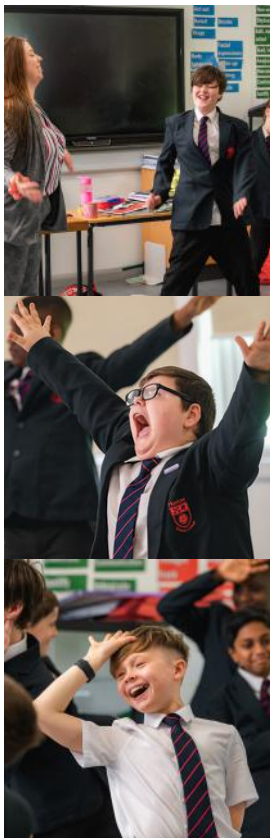
www.aqa.org.uk/subjects/art-and-design/gcse/art-and-design-8201-8206/subject-content/photography

EDEXCEL GCSE Drama

What will the course involve?

Drama opens up new dimensions of emotional experiences. Observing other people's creative processes and products can assist you in accessing emotions, along with understanding different ways of interpreting and understanding information.

In Drama, we express ideas, observations, and feelings by making choices about roles and/or characters. It will increase your ability to think; creatively, imaginatively, and divergently. You will learn how to think outside the box. Drama teaches students how to become critical, rather than just passive viewers. It will increase your self-esteem and confidence.



EdExcel	Content	Grade Percentage
Component 1 - Devising Theatre	Create and develop an original piece of theatre from a stimulus. You will be marked on a group performance and a written portfolio. This will be internally assessed	40% (60 marks) Performance - 15 Portfolio - 45
Component Two - Scripted Performance	Students will perform two key extracts from a published script. This will be externally assessed	20% (24 marks) 12 marks for each key extract
Component Three - Written Examination	Section A: Bringing a set text to life (An Inspector Calls) Section B: Live theatre evaluation	40% (60 marks) Section A - 45 Section B - 15

What will I learn?

Drama has a number of transferable skills and all of these skills will be needed whether it is in a person's career or life. These skills include

- Confidence
- Teamwork
- Problem solving
- Problem solving
- Problem solving
- Leadership
- Negotiation
- Commitment
- Resilience
- Public speaking
- Empathy
- Creativity

Why should I study this course?

Drama will teach you to be creative. It will encourage you to come up with exciting ideas and you will learn how to think outside the box. You will learn a variety of skills in GCSE Drama including, devising your own original performances using a stimulus, performing an existing script, watching and evaluating live theatre, what the role of a director entails, lighting and sound design and costume and set design.

Further Education links

A Level in Drama and Theatre

Career Links

Performing Arts, Acting, Musical Theatre, Dance, Technical Arts, Makeup Artistry in the Creative Industries

Where can I find out more?

Talk to Miss Inness

<https://qualifications.pearson.com/en/qualifications/edexcel-gcses/drama-2016.html>

EDUQAS GCSE Music

What will the course involve?

GCSE Music helps you to develop musical skills and interests, understand and evaluate a range of different kinds of music and make music both individually and in groups. The course is designed to give you the opportunity to develop your appreciation, understanding, performing and composing skills of music, whatever your previous experiences, through four interrelated areas of study:

- Area of study 1: Musical Forms and Devices
- Area of study 2: Music for Ensemble
- Area of study 3: Film Music
- Area of study 4: Popular Music



EDUQAS	Content	Grade Percentage
Component One - Performing Music	Performance One Performance Two	30%
Component Two - Composing Music	Composition One Composition Two	30%
Component Three - Listening and Appraising Exam	Listening exam based on two set works and unfamiliar extracts	40%

What will I learn ?

Alongside developing, composing and performing skills, you will study:

- the meaning of Western Classical Music: musical forms and structures; musical devices used in composition; music theory
- information about a set piece to study, Badinerie by J.S. Bach
- what is meant by the word ensemble: chamber music; jazz and blues; musical theatre; performing in an ensemble
- the origins of film music: how it is created; the function of film music; musical techniques used in film music
- pop and rock genres and their musical features: musical fusion; Bhangra
- information about a set piece to study, Africa by Toto.

Why should I study this course?

If you already play an instrument or sing, you can develop your skills and get a GCSE out of it! If you don't already play an instrument or sing, you can take the opportunity to learn new skills which could stay with you for life. If you already enjoy writing your own music or songs you can use this ability and experience.

Further Education links

A Level Music, or Music Technology, BTEC Music, BTEC Music Performance or BTEC Music Technology

Career Links

Professional Singer, songwriter, live sound technician, musician, DJ, Event Manager, Record Producer, Blogger, Composer, Music Teacher

Where can I find out more?

Talk to Mrs Letts

www.eduqas.co.uk/qualifications/music-gcse/#tab_keydocuments

Applied Based Options



EDEXCEL GCSE Business

What will the course involve?

This course is active and enjoyable. To solve business problems you need to be good at communicating and explaining your ideas. You will be required to work well in teams, show good presentation skills, write well and demonstrate good maths skills. You will learn how to be a creative thinker and how to make decisions.



Edexcel	Content	Grade Percentage
Theme 1	Exam at end of year 11 - 1 hour and 30 minutes	50%
Theme 2	Exam at end of year 11 - 1 hour and 30 minutes	50%

What will I learn?

- In Theme 1 you will be introduced to the world of small businesses and will look at what makes someone a successful business person. You will study the key business concepts, issues and skills involved in starting and running a small business. You will find out how to develop an idea and spot an opportunity, and how to make a business more effective and successful. You will understand how to make and manage money well. You will also see how the world around us affects small businesses and all the people involved.
- In Theme 2 you will learn more about how small businesses are developed beyond the start-up phase, and discover how businesses promote themselves and keep their customers happy. You will learn how businesses manage both their finances and the people who work for them. Theme 2 focuses on key business concepts and decisions used to grow a business, with an emphasis on aspects of marketing, operations, finance and human resources. It also considers the impact of the wider world on the decisions a business makes as it grows.

Why should I study this course ?

Business Studies GCSE is relevant to the world of work and employers value the qualification. You will gain useful skills for education and employment, and understand more about how businesses work.

Further Education links

A Level Business

Career Links

Accountancy, Human Resources, Banking, Marketing, Recruitment, Law, Finance, Distribution, Administration, Retail, Insurance, Hospitality

Where can I find out more ?

Talk to Mr Fletcher

<https://qualifications.pearson.com/en/qualifications/edexcel-gcses/business-2017.html>

OCR GCSE Computer Science J277

What will the course involve?

Component 01: Computer systems

Introduces the central processing unit (CPU), computer memory and storage, data representation, wired and wireless networks, network topologies, system security and system software. It also looks at ethical, legal, cultural and environmental concerns associated with computer science.

Component 02: Computational thinking, algorithms and programming

Application of knowledge and understanding gained in component 01. You develop skills and understanding in computational thinking: algorithms, programming techniques, producing robust programs, computational logic and translators.



OCR	Content	Grade Percentage
Component 1 - Examination	Computer Systems - 1 hour and 30 minutes	50%
Component 2 - Examination	Computational thinking, algorithms and programming	50%

What will I learn?

You will

- understand and apply the fundamental principles and concepts of Computer Science, including abstraction, decomposition, logic, algorithms, and data representation
- analyse problems in computational terms through practical experience of solving such problems, including designing, writing and debugging programs
- think creatively, innovatively, analytically, logically and critically
- understand the components that make up digital systems, and how they communicate with one another and with other systems
- understand the impacts of digital technology to the individual and to wider society
- apply mathematical skills relevant to Computer Science.

Why should I study this course?

- Do you have an interest in computing?
- Can you think logically and creatively?
- Do you understand why accuracy and precision is important in coding?

Further Education links

A Level Computer Science/BTEC Computing

Career Links

Coding, Software Engineer, IT Consultant, Games Developer

Where can I find out more ?

Talk to Mr Drage

www.ocr.org.uk/qualifications/gcse/computer-science-j277-from-2020

NCFE Level 1/2 Tech Award in Engineering

What will the course involve?

The Level 1/2 Technical Award in Engineering is designed for learners who want an introduction to engineering that includes a vocational and project-based element. The qualification will appeal to learners who wish to pursue a career in the engineering industry or progress onto further study.

To be awarded this qualification, learners are required to successfully demonstrate the knowledge and skills to meet the requirements of all 9 mandatory content areas.



How will I be assessed?

The qualification has 2 assessments externally-set by NCFE: one non-exam assessment and one written examined assessment. Only one attempt at each assessment is permitted.

What will I learn?

You will

- a broad introduction to the engineering sector
- covering various disciplines and essential skills.
- Learners will study the engineering process from start to finish
- Gain practical experience with tools, equipment, and techniques, including Computer-Aided Design (CAD).



Why should I study this course?

Learners who achieve at level 1 might consider progression to level 2 qualifications post-16, such as:

- GCSE in Engineering
- study at level 2 in a range of technical routes that have been designed for progression to employment, apprenticeships and further study



Further Education Links

Learners who achieve at level 2 might consider progression to level 3 qualifications post-16, such as:

- Level 3 Applied Generals
- Level 3 Technical Levels
- A Level in Engineering (this will support progression to higher education)

Career Links

Learners could progress into employment or onto an apprenticeship. The understanding and skills gained through this qualification could be useful to progress onto an apprenticeship in the engineering industry through a variety of occupations that are available within the industry, such as in technical writing or technical sales, or as an engineer in one of the many different sectors across the industry, such as pharmaceuticals, aerospace or construction.

Where can I find out more ?

Talk to ?????

<https://www.ncfe.org.uk/qualification-search/qualification-detail/ncfe-level-12-technical-award-in-engineering-671>

EDEXCEL BTEC Level 1/2 Tech Award in Health and Social Care

Why is Health and Social Care important?

Health and Social Care is all about helping people. During the 2020 pandemic, we saw how important it is to help vulnerable people in the community and provide them with support. Health and Social Care workers can improve peoples' way of life. Health and social care is so varied; people need physical, mental, and nutritional support to stay healthy and well. Health care and social care professionals say it is an incredibly rewarding life.



What is involved in the Health and Social Care course?

The course is made up of three components. Through these individual components, you will gain knowledge about human growth and development, health and social care services, and factors affecting people's health and wellbeing. You will also consider attitudes and values that are vitally important in the health sector and get the opportunity to practise applying them through role-play and real-life case-studies.

You will develop key skills such as: Interpreting data to assess an individual's health and design a plan to improve a person's health and wellbeing.

How will you be assessed?

You will undertake three components across the two years. Two of these are internally assessed, which means that evidence is collated in lessons and working at home and used against grading criteria. Your teachers will mark the work and this will be externally moderated. These components are "Human Lifespan Development" and "Health and Social Care Services and Values".

The third component is "Health and Wellbeing" and is assessed externally through an examination.

What can you do with Health and Social Care in the future?

There are many careers which complement a Health and Social Care qualification. Being successful on this course would lead you into paramedics, nursing, health care practice, diet and nutrition, occupational therapy, psychology, mental health care, childcare, social work and many more. Taking the BTEC Technical Award in Health and Social Care, can lead you onto studying at Level 3 and then can take you onto university.

Why should I study this course ?

The BTEC Tech Award suite is an introduction to vocational learning. The qualifications give learners the opportunity to build applied knowledge and skills that show an aptitude for further learning. Health and social care is one of the fastest growing sectors in the UK with demand for both health and social care employees continuously rising. Social care employees, such as care assistants and social workers work with individuals to support them to be as independent as possible in their own homes, in care homes or nursing homes.

Further Education links

Counselling and Applied Psychology, Healthcare Practice, Healthcare Practice for England, Healthcare Professions Support for England, Social and Community Work

Career Links

Care assistant, Social Workers, Health Care Assistant

Where can I find out more ?

Talk to Mrs McDougall

<https://qualifications.pearson.com/en/qualifications/btec-tech-awards/health-and-social-care-2022.html>

EDUQAS GCSE D&T: Level 1/2 Award in Hospitality & Catering (single award)

What will the course involve?

This structure has been designed to develop your knowledge and understanding related to a range of hospitality and catering providers; how they operate and what they have to take into account to be successful. There is the opportunity to learn about issues related to nutrition and food safety and how they affect successful hospitality and catering operations. You will also have the opportunity to develop some food preparation and cooking skills as well as transferable skills of problem solving, organisation and time management, planning and communication.



How will I be assessed?

EDUQAS	Content	Grade Percentage
Unit 1 Examination	Focus on Hospitality and Catering in Industry	40%
Unit 2 - Coursework (inc. Practical)	Hospitality and Catering in action	60%

What will I learn?

You will

- develop practical skills – speed and finesse is key.
- evaluate dishes/meals you may eat and consider how these can be developed, adapted or improved.
- think about how foods should be stored, prepared, cooked and served - safely and hygienically with no loss in quality
- think about factors that can contribute to food induced ill-health.
- think about how to adapt meals to meet specific dietary needs
- consider why food/ingredients act in a specific way
- observe media to research and explore the topics you will cover in class.
- engage with the Hospitality and Catering sector as much as possible

Why should I study this course?

- Do you enjoy practical lessons?
- Do you like presenting your food to a good standard?
- Do you enjoy learning new techniques?
- Do you like the idea of creating meals and serving them in a professional environment?

Further Education Links

Level 3 Hospitality and Catering

Career Links

Chef, Food Science, Baker, Butcher, Event Manager, Hotel Management

Where can I find out more ?

Talk to Mrs Dube or Mrs Stubbs

www.edugas.co.uk/qualifications/level-1-2-vocational-award-in-hospitality-and-catering/#tab_keydocuments

EDEXCEL BTEC Level 1/2 Tech Award in Sport

What will the course involve?

Component 1: Preparing participants to take part in sport and physical activity

Students will explore types and provision of sport and physical activity for different types of participants. They will examine equipment and technology required for participants to use when taking part in sport. They will adapt a warm-up for different categories of participants and different types of physical activity.



Component 2: Taking part and improving other participants sporting performance

Students will understand how different components of fitness are used in different physical activities. They will be able to participate in sport and understand the roles and responsibilities of officials. Finally, they will lead a session on ways to improve participants sporting techniques.



Component 3: Developing fitness to improve other participants performance in sport and physical activity

Students will sit an external examination that will explore the importance of fitness for sports performance, investigate fitness testing to determine fitness level and their results. Finally, they will investigate fitness programming to improve fitness and sport performance.



EDEXCEL	Content	Grade Percentage
Component 1	Internally assessed assignment (Written and Leadership practice)	30%
Component 2	Internally assessed assignment (Written and practical)	30%
Component 3	An external written examination paper - worth 60 marks (1 hour and 30 minutes)	40%

Why should I study this course?

Achieving a successful grade in BTEC Tech Award in Sport can open up a huge variety of different opportunities which will allow you to investigate and experience many different pathways.

The practical, vocational style of learning and content of work helps build many transferrable skills that can be used in employment, education and training. These opportunities could include: further and higher education courses at school or college, apprenticeships or many sport & leisure sector employers.

Further Education Links

Study Level 3 BTEC National in Sport:, Extended Certificate (1 A level) Diploma (2 A levels)

Career Links

Sports Coach, Physiotherapist, Sports Nutrition, PE Teacher, Personal Trainer, Sports Science

Where can I find out more ?

Talk to Mr Letts

<https://qualifications.pearson.com/en/qualifications/btec-tech-awards/sport-2022.html>

Academic Based Options



OCR GCSE Geography A - Geographical Themes & Challenges

What will the course involve?

Geography is enquiry-based, about real world issues, both global & local. You will investigate three areas: Living in the UK Today, The World Around Us, Geographical Skills.

How will I be assessed?



OCR	Content	Grade Percentage
Living in the UK	Examination 1 hour	30%
The World around the UK	Examination 1 hour	30%
Geographical Skills	Examination 1 hour and 30 minutes	40%

What will I learn?

The Living in the UK module will focus on the dynamic and diverse geography of the UK. You will study two distinct landforms in depth; the Norfolk coast and the River Tees. We look at the geography of the city of London and its global influence.

The World Around Us looks at global geographical issues. You will study a range of ecosystems including the stunning Great Barrier Reef and the Amazon Rainforest. You will find out about Rio de Janeiro and how it has been transformed by migration as well as a detailed investigation into the country of India.

Field studies and trips are an integral part of the Geography GCSE experience. The Geography Department are proposing to take students to:

- The Norfolk Coast and Hunstanton—To examine the coastal processes operating at the beach and an urban investigation in the town
- Northampton— An urban fieldtrip study of a town and its surrounding area

There are also a wider selection of trips and experiences being planned.

Why should I study this course?

Geography helps you to make sense of the world you live in. It is the study of where places are and what they are like. It looks at how people live in different parts of the world and how and why places change. As the world 'gets smaller' and our environment is increasingly threatened, we need more than ever to understand the geography of the world. A survey of employers showed that Geography is rated as one of the most useful subjects.

Further Education Links

Geography is a diverse and multi-disciplinary course and lends itself to a wide variety of A Levels, such as Geography, Biology, English, Economics and more

Career Links

This qualification can lead to the further study of Geography and is also useful in a variety of careers linked with Advertising, Armed Services, Estate Agency, Family/Forestry, Leisure and Tourism, Selling and Marketing, Nature Conservation, Planning and Transport, plus many more.

Where can I find out more ?

Talk to Mr Yewman.

www.ocr.org.uk/qualifications/gcse/geography-a-geographical-themes-j383-from-2016

EDEXCEL GCSE History

What will the course involve?

- Exploration of a wide variety of British and Global History to gain an understanding of the world we live in today.
- Developing skills to effectively debate and discuss historical events.
- Opportunities to engage in interesting class discussions where everyone is encouraged to participate and give their point of view.
- Exploration of sources written and produced by those who experienced key moments from the past.



How will I be assessed?

Edexcel	Content	Grade Percentage
Paper 1	Medicine Through Time	30%
Paper 2	Superpower Relations Early Elizabethan England 1558-88	40%
Paper 3	Weimar and Nazi Germany	30%

What will I learn?

You will

- find out about the medical challenges facing previous generations including the Black Death, the Great Plague and the horror of Cholera outbreaks. You will also consider the ways in which the prevention and treatment of disease has changed over time.
- find out how close we really came to all out nuclear warfare between the USA and USSR.
- find out about how Germany recovered from the loss of World War I only to be financially ruined by the end of the 1920s due to the Great Depression. This will then lead to a study of why the German people turned to Adolf Hitler and his Nazi Party in their desperation

Why should I study this course?

We live in a complex but fascinating world. It is very difficult to understand the world and events around us if we do not study and understand history. We have an excellent team of History teachers at Huxlow, who love the subject, and who strive to do everything possible to ensure all **students achieve??**

Further Education Links

A Level History, Law , English, Politics

Career Links

The law, teaching, journalism, the Civil Service, politics, architecture, and town planning, research, accountancy, publishing, production companies, business, cultural marketing

Where can I find out more ?

Talk to Mr Davies

<https://qualifications.pearson.com/en/qualifications/edexcel-gcse/history-2016.html>

AQA Sociology

What will the course cover?

In GCSE Sociology, you will explore and respond to intriguing questions such as:

- Are all 'hoodies' troublemakers?
- Why are young black individuals eight times more likely to be stopped and searched compared to their white counterparts?
- Why do girls tend to excel academically over boys?

Sociology examines the functioning of society. It will enhance your understanding of how individuals connect within a larger social network and inspire you to critically evaluate societal beliefs that you may have previously accepted without question. Sociologists seek to understand the reasons behind the way society operates.



How will I be assessed?

AQA	Content	Grade Percentage
Paper 1	Families Education Social theory and methodology	50%
Paper 2	Crime and Deviance Social Stratification	50%

What will I learn?

- You will learn to be open minded.
- Some things that you “know” are not always accurate.
- You will need to be able to analyse the information given to you and make decisions about its accuracy and representativeness.
- You will learn to view society from many different perspectives – and accept that different people see the same concept in different ways.
- You will also learn to accept the views of others – even if you do not agree with them.

Why should I study this course?

Sociology is about your life and the world around you. It is a subject that you will have experience of and one that will help you understand many aspects of your future. You can bring your own life events and ideas into the classroom in a way you might not be able to do in other subjects

Further Education Links

A Level Sociology

Career Links

Counsellor, Police Officer, Teaching, Social Worker, Market Research, Central Government, Law and Journalism, Charity and Public Relations

Where can I find out more ?

Talk to Mrs Holmes

www.aqa.org.uk/subjects/sociology/gcse/sociology-8192

AQA GCSE Statistics

What will the course involve?

Statistics is about making decisions when there is uncertainty. Perhaps one of the most versatile areas of maths, it gives students the skills to collect, analyse, interpret and present data. It complements subjects such as GCSE Biology, Psychology, Geography, Business and Economics, and opens the door to a variety of careers – from weather forecasting to the biological sciences. If you enjoy maths and how it can be applied in the real world then statistics is a course you should do.



How will I be assessed?

AQA	Content	Grade Percentage
Unit 1 - Examination	1 hour and 45 minutes Foundation OR Higher	50%
Unit 2 - Examination	1 hour and 45 minutes Foundation OR Higher	50%

What topics will I cover?

Statistics GCSE overlaps and complements certain elements of GCSE Mathematics, including topics on averages, charts and graphs (pie charts, histograms, scatter graphs) as well as looking into contextual approaches to analysis, involving standard deviation, sampling, data comparison and justification techniques.

Why should I study this course?

Statistics is an exciting field about the thrill of discovery, learning, and challenging your assumptions. Statistics facilitates the creation of new knowledge. Bit by bit, we push back the frontier of what is known.

Further Education Links

A Level Statistics

Career Links

Healthcare informatics, Business Analyst, Data Analyst, Machine Learning Engineer, Market Researcher

Where can I find out more ?

Talk to Mr King

www.aqa.org.uk/subjects/mathematics/gcse/statistics-8382

Core Subjects



AQA GCSE English Language

What will the course involve?

All students will study a range of fiction extracts for Language paper 1 and non-fiction extracts for Language paper 2. Students will learn how to plan, write and structure writing for narrative, descriptive, informative and persuasive purposes. The programme of study will take place over two years. Students will also work on how to write for specific audiences from different perspectives.

The subject requires real effort in order to achieve strong results. It is also vital that students are reading regularly as this will greatly improve their understanding of how texts are written and how they can develop



How will I be assessed?

AQA	Content	Grade Percentage
Language Paper 1	Explorations in Creative Reading and Writing	50%
Language Paper 2	Writer's Viewpoints and Perspectives	50%

What will I learn?

You will:

- learn how to infer key aspects from a text and how to support your ideas successfully with evidence from the text
- secure an awareness of language and structure in a text and how a writer's craft creates meaning in the text
- secure evaluative skills and respond to an extended writing question
- create and draft extended creative and narrative writing, building description and using sentence craft, establish purpose, audience and text type and develop grammatical knowledge

Why should I study this course?

All students study English Language in line with the National Curriculum.

Further Education Links

You will need a good English grade to ensure you can access other subjects from Humanities to PE, French to DT. A good writing style is essential in all subjects as is interpretation of multiple types of text.

Career Links

Medicine, Law, teaching, communications and media, journalism, civil engineer, social media manager, copy editor, para legal, editor and writer

Where can I find out more ?

Talk to Mr Horsley

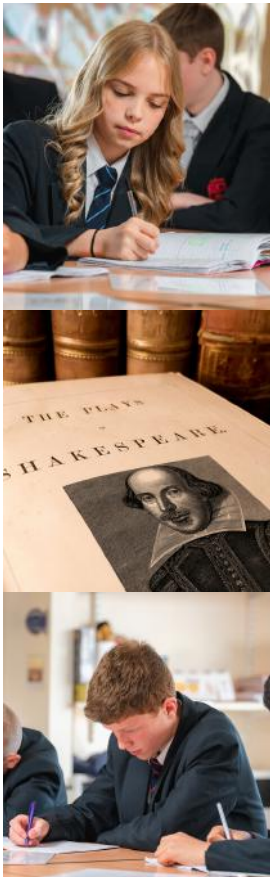
www.aqa.org.uk/subjects/english/gcse/english-language-8700/specification-at-a-glance

AQA GCSE English Literature

What will the course involve?

All students will study Romeo and Juliet, An Inspector Calls, A Christmas Carol and the AQA Power and Conflict poetry anthology. You will study the background of the text, key influences of the author and analyse linguistic devices and analyse lexical choices.

The subject requires real effort in order to achieve strong results. It is also vital that students are reading regularly as this will greatly improve their understanding of how texts are written and how they can develop their own writing.



How will I be assessed?

AQA	Content	Grade Percentage
Literature Paper 1	Shakespeare and the 19th Century Novel	40%
Literature Paper 2	Modern texts and poetry	60%

What will I learn?

You will:

- learn how to infer key aspects from a text and how to support your ideas successfully with evidence from the text
- learn about texts and their cultural, social and moral background
- secure an awareness of language and structure in a text and how a writer's craft creates meaning in the text
- learn about literary techniques the author has used in order to provide the reader with a message
- how to write an analytical essay with academic tone

Why should I study this course?

All students study English Literature in line with the National Curriculum. It will introduce to you a broad range of texts that will help to unlock the world around you.

Further Education Links

You will need a good English grade to ensure you can access other subjects from Humanities to PE, French to DT. A good writing style is essential in all subjects as is interpretation of multiple types of text.

Career Links

Medicine, Law, teaching, communications and media, journalism, civil engineer, social media manager, copy editor, paralegal, editor and writer.

Where can I find out more ?

Talk to Mr Horsley

www.aqa.org.uk/subjects/english/gcse/english-literature-8702/specification-at-a-glance

AQA GCSE French

What will the course involve?

- Theme 1—People and Lifestyle - Education and Work, Healthy Living, Identity and Relationships
- Theme 2—Popular Culture - Celebrity Culture, Free time Activities, Customs, Festivals and Celebrations
- Theme 3—Communication and the world around us - Environment and where people live, Media/Technology

You will either be entered in the Foundation or Higher Tier.



How will I be assessed?

AQA	Content	Grade Percentage
Listening	All 3 themes (questions on a variety of tracks) Dictation	25%
Reading	All 3 themes (text with questions and translation from French to English)	25%
Speaking	Read aloud a short text A role play and two photo cards followed by a conversation	25%
Writing	3/4 different writing tasks (Higher or Foundation) on the three themes taught	25%

What will I learn?

You will

- have weekly vocabulary tests and “doing” homework (same as KS3)
- study texts, listening tracks and complete translations on the topics mentioned above and write paragraphs on the topics taught with very specific guidelines to meet the success criteria
- develop your English literacy with English grammar teaching and explaining cognates which are unfamiliar English words
- develop your cultural awareness with French music, films, celebrations and discussions about the French lifestyle.
- reflect and discuss topics such as environmental, health or social issues but also colonisation and its impact on a country’s arts, food and culture.

Why should I study this course?

French is the first or second language in more than 40 countries and is spoken by 125 million people around the world, on every continent. Because French is a foreign language of choice for so many people in the world, knowing French will also increase your chances to work in industries such as banking, chemistry, medicine, arts and fashion.

Further Education Links

A Level French

Career Links

Diplomacy, Law, Medicine, Tourism, Hospitality, Trade

Where can I find out more ?

Talk to Miss Maubert

www.aqa.org.uk/subjects/languages/gcse/french-8658/specification-at-a-glance

OCR GCSE Mathematics

What will the course involve?

The GCSE consists of all aspects of Mathematics: Number, Algebra, Ratio, Proportion and Rates of Change, Geometry and Measures, Statistics and Probability.

It is a course that focuses on applying Mathematics in context, problem solving, reasoning and the functional elements of Mathematics. It encourages a teaching approach that is enriching and engaging for all learners. It concentrates on the mathematical knowledge and applications that are most accessible and relevant. All students are required to study mathematics at higher or foundation tier.



How will I be assessed?

OCR	Content	Grade Percentage
Paper 1	Calculator	33%
Paper 2	Non-Calculator	33%
Paper 3	Calculator	33%



What will I learn?

- You will be taught the content of the Mathematics curriculum at higher or foundation level.
- GCSE Maths links to real life problem solving as well as financial implications
- Corbettmaths.co.uk
- SPARX : Sparxmaths.com
- www.ocr.org.uk/qualifications/gcse/mathematics-j560-from-2015

Why should I study this course?

Maths is compulsory in the national curriculum. All students are currently required to pass GCSE at grade 4 and above; those that are unable to will continue studying and taking their exam in Maths until the age of 18.

Further Education Links

Maths is available to study post 16 as a subject on its own, but also Further Maths is available. Having a good understanding of Maths topics is key for several subject areas including science, psychology and geography. At university, GCSE Maths at grade 5 or above is a requirement for most courses.

Career Opportunities

Students who pursue Maths at the A level or university level are well-prepared, as graduates with a Maths degree earn, on average, starting salaries that are 20% higher. A strong GCSE Maths grade is crucial for positions in engineering, logistics, various business management roles, and medicine.

Where can I find out more ?

Talk to any Maths teachers who are always able to answer any questions
www.ocr.org.uk/qualifications/gcse/mathematics-j560-from-2015/

AQA GCSE Science

Trilogy A - Double Award

What will the course involve?

Chemistry

- Atomic structure and the periodic table
- Bonding, structure, and the properties of matter
- Quantitative chemistry
- Chemical changes
- Energy changes
- The rate and extent of chemical change
- Organic chemistry
- Chemical analysis
- Chemistry of the atmosphere
- Using resources

Biology

- Cell biology
- Organisation
- Infection and response
- Bioenergetics
- Homeostasis and response
- Inheritance, variation and evolution
- Ecology

Physics

- Energy
- Electricity
- Particle model of matter
- Atomic structure
- Forces
- Waves
- Magnetism and electromagnetism



How will I be assessed?

Biology	Paper 1 - Cell Biology, Organisation, Infection and Response and Bioenergetics. Written Exam - 1 hour and 15 minutes	16.7%
	Paper 2 - Homeostasis and Response, Inheritance, Variation and Evolution and Ecology.. Written Exam - 1 hour and 15 minutes	16.7%
Chemistry	Paper 1 - Atomic structure and the periodic table, Bonding, structure and the properties of matter, Quantitative chemistry, Chemical changes and Energy changes Written Exam - 1 hour and 15 minutes	16.7%
	Paper 2 - The rate and extent of chemical change, Organic chemistry, Chemical analysis, Chemistry of the atmosphere and Using resources. Written Exam - 1 hour and 15 minutes	16.7%
Physics	Paper 1 - Energy, Electricity, Particle model of matter and Atomic structure. Written Exam - 1 hour and 15 minutes	16.7%
	Paper 2 - Forces, Waves and Magnetism and electromagnetism Written Exam - 1 hour and 15 minutes	16.7%

Why should I study this subject

This course is a core element of secondary education.

Further Education Links

BTEC Science. BTEC Sport

Career Links

Science can lead you into many different careers, including research, medicine, crime scene investigation, collision investigation and many more. It is part of STEM (Science, Technology, Engineering and Maths) so can assist you in developing into careers in IT, data analysis, statistics and many more.

Where can I find out more ?

Talk to Mr Parish

www.aqa.org.uk/subjects/science/gcse/combined-science-trilogy-8464/specification-at-a-glance



Huxlow Academy

Ambition • Respect • Pride

Finedon Road, Irthlingborough, Northamptonshire, NN9 5TY

T: 01933 650496 | **E:** enquiries@huxlow.northants.sch.uk

Headteacher: Kim Isaksen

www.huxlow.northants.sch.uk



Huxlow Academy is part of the Tove Learning Trust –
a highly successful and growing multi-academy trust

www.tovelearning.org.uk