

2ND *Edition*

LSU CAMPUS DEVELOPMENT CENTER

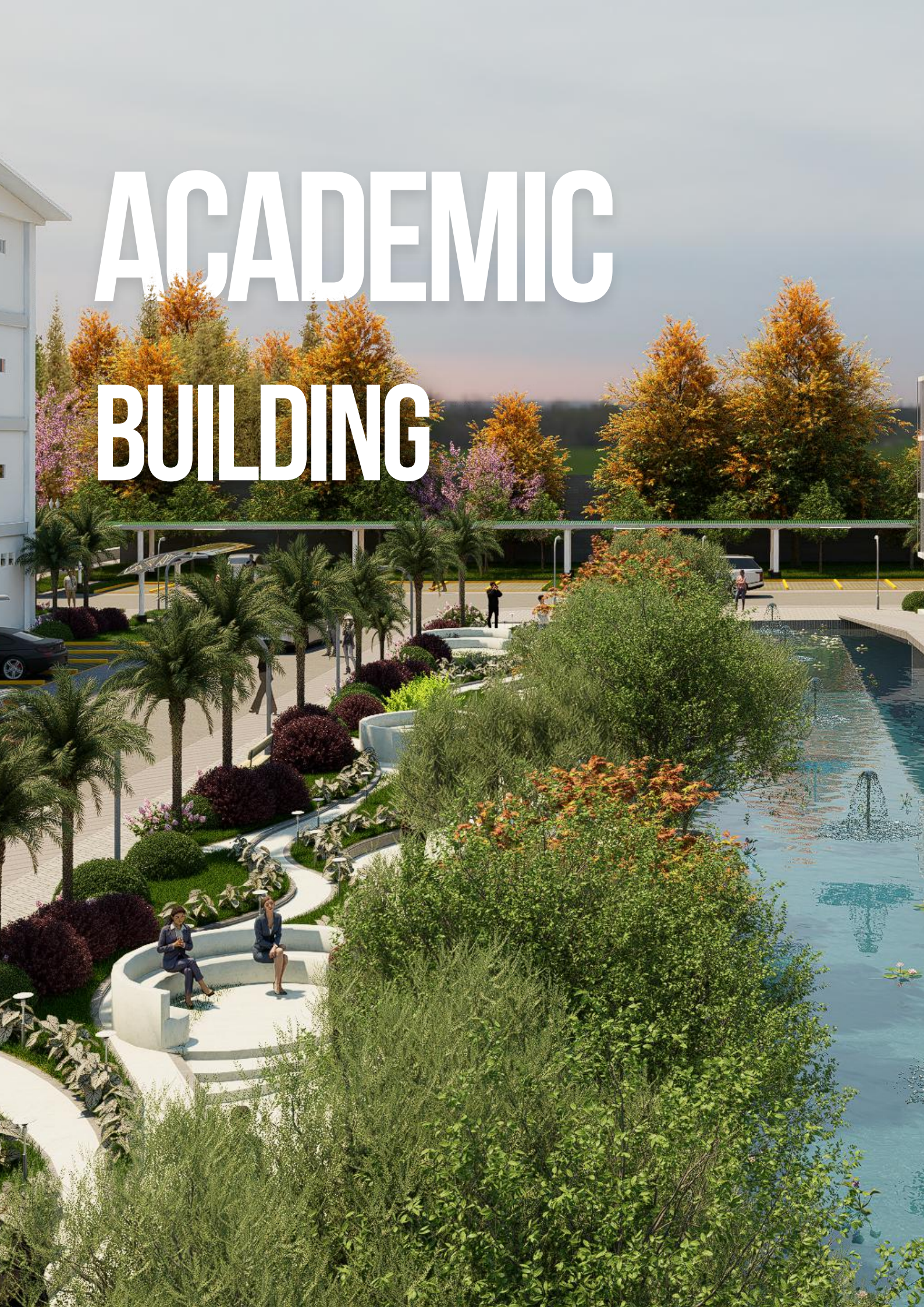
ACADEMIC YEAR 2025-2028

LSU

REIMAGINED



ACADEMIC BUILDING





**TARGET
IMPLEMENTATION:
2028**

PRESIDENT'S MESSAGE



To the Lasallian Community and Friends,

This book serves as a blueprint for our collective dream. The Campus Development Plan coffee table book is far more than a collection of images and designs; it lays the groundwork for a vision that aspires to transform La Salle University into a campus that is not only visually impressive, but also deeply purposeful. Inspired by the Strategic Intent to foster a sustainable community—a vision initiated by my predecessor, Brother Jose Mari Jimenez FSC—this plan imagines a future where aesthetic appeal, practical function, and environmental responsibility exist in harmony. It encourages us to reimagine LSU, seeing not only what it is today, but everything it can become.

At the heart of this book lies the ambition to create a welcoming, effective learning environment for both students and educators in our region. A thriving university is one that constantly re-examines and reimagines its spaces, ensuring that every corner of the campus nurtures learning, enhances well-being, and builds community. Developing our campus is not a luxury, but a vital investment in the future—a commitment to shaping spaces where minds grow, hearts are inspired, and the transformative power of education endures. This plan describes the landscape of our shared dream, inviting every Lasallian and partner to take part in making it a reality.

Within these pages, you'll find the future of La Salle University envisioned: spaces that promote growth, architecture that inspires, and a campus community built on shared hope. This book is dedicated to the educators and students of LSU, whose pursuit of learning and service animates our dream. We offer deep gratitude to all who have already contributed their time, resources, and trust, and we warmly thank those who will continue to support us. Together, we believe that what begins as a vision on these pages will soon become an essential part of LSU's future.

In Saint La Salle,

BR. REY E. MEJIAS FSC
President

TABLE OF CONTENTS

LASALLIAN MISSION AND VISION	1
LASALLIAN CORE VALUES	2
EDUCATIONAL POLICY	3
LSU CAMPUS DEV VISION MAP	5
COMMUNITY LIBRARY	7
LANDSCAPE DEVELOPMENT PLAN	9
<i>LA SALLE BUILDING</i>	11
<i>ST. BENILDE BUILDING LANDSCAPE</i>	20
<i>ST. COLUMBAN AREA</i>	25
THE ARTS CENTER	35
<i>EXTERIOR PERSPECTIVE</i>	37
<i>INTERIOR DESIGNS</i>	38
<i>DANCE ROOMS</i>	39
COMMERCIAL SPACES	40
LSU OVAL	44
BLESSED VIRGIN MARY	51
BEU PLAYGROUND	55
CENTRAL PARK CAFE	57
GALA RETREAT HALL	63
RETREAT CENTER MULTI-PURPOSE HALL	70
SPORTS COMPLEX	71
LSU BOARD ROOM	76
LSU LAW LIBRARY	80
BVM 4 TH FLOOR IMPROVEMENTS	83
BVM AUDITORIUM	85
BVM CLASSROOM	87
BVM COMPUTER ROOM	
CAMPUS 2 ROAD CONCRETING	88
GATE 7	91
PARENTS' WAITING LOUNGE	93
BROTHERS' HOUSE FRONT YARD	95
LANDSCAPE PHASE 1 & 2	
PROJECT COST ESTIMATIONS	99
LSU CAMPUS DEV CENTER	100



VISION

La Salle University, a member of the network of educators in the Lasallian East Asia District, is a community of learners that participates in the transformation of society in the spirit of the Gospel through innovations in human and Christian education; research; and community and institutional partnerships.

MISSION

To create a learner-centered environment focused on (a) application of knowledge from various disciplines to address real world problems; (b) community-building skills; and (c) nurturing passion and sense of vocation;
To cultivate a dynamic university community committed to lifelong learning by emphasizing (a) recruitment and retention; training and re-skilling highly qualified personnel; (b) sustainability in its processes; and
(c) the experience of a supportive community

To contribute to the transformation of society by its external partnerships to enhance (a) work-readiness of its learners; (b) accessibility of quality education;
(c) participation in sustainable development initiatives.



CORE VALUES

Faith. We see life through the lens of God's compassionate love and His desire for all, especially the poor, to possess fullness of life.

Service. We are creative and open to new ideas; committed to innovation and the pursuit of excellence in our work. Through our ministry, we build a just and sustainable society.

Communion. We collaborate and welcome diversity. We build supportive communities of faith and service.

EDUCATIONAL POLICY

La Salle University stands at the forefront of cultivating a vibrant learning community guided by Gospel values within the region. Our active engagement in societal transformation is driven by a commitment to innovative education, rigorous research, and robust community extension services, all rooted in the rich tradition of Lasallian values. We tirelessly strive for the betterment of society by imparting knowledge that goes beyond the academic realm, including the responsible management and dissemination of intellectual property generated through research and innovation.

L

Lifelong learning is our passion. We are dedicated to delivering outstanding learning experiences across all educational levels. We prioritize learners' and stakeholders' satisfaction while ensuring compliance with relevant regulations.

S

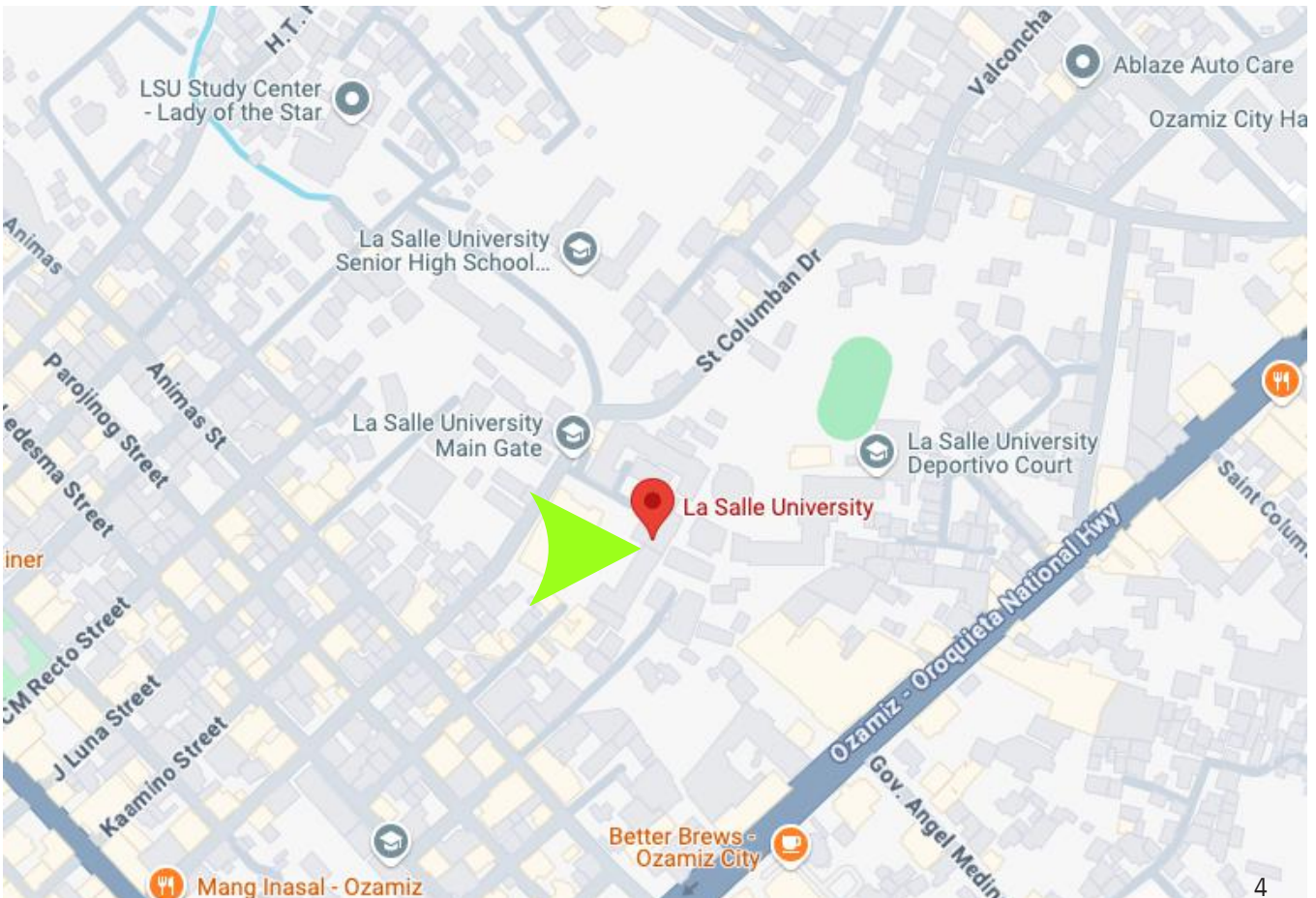
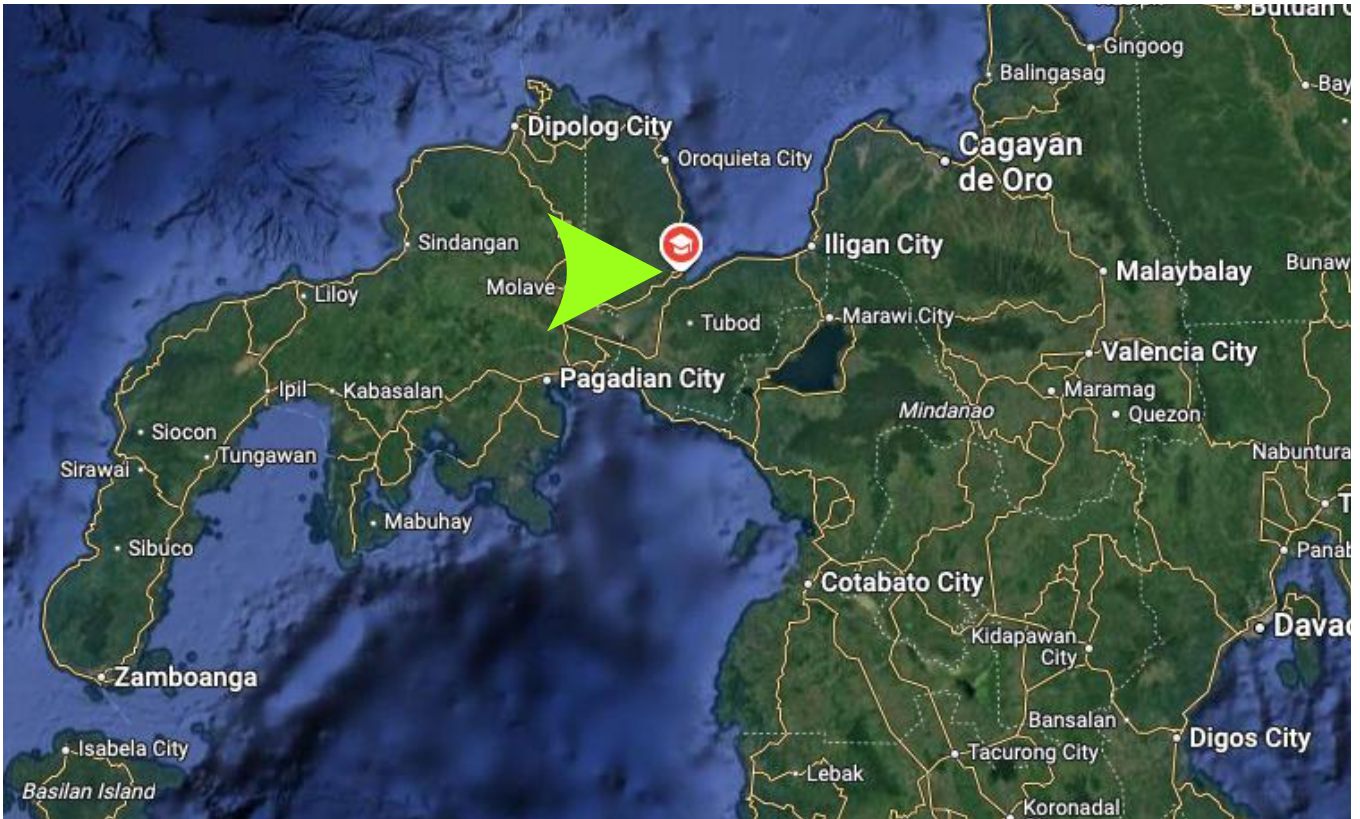
Service to the Almighty and society is a calling. By integrating Gospel values into our educational fabric, we aim to instill a strong moral compass in our students, empowering them to make meaningful contributions to their communities. Our holistic and pragmatic approach, combining academic rigor with a focus on societal responsibility, positions La Salle University as a trailblazer in shaping well-rounded individuals poised to impact the world positively.

U

Unwavering excellence is our commitment. LSU strives to be abreast with the appropriate scientific and technological developments, adhere to the ethical conduct of educational research, and support an inclusive and sustainable society. We shall continually improve the efficiency of our management systems, including the processes for protecting and promoting intellectual property, as well as the evaluation and expansion of community extension programs, ensuring the consistent advancement of the institution.

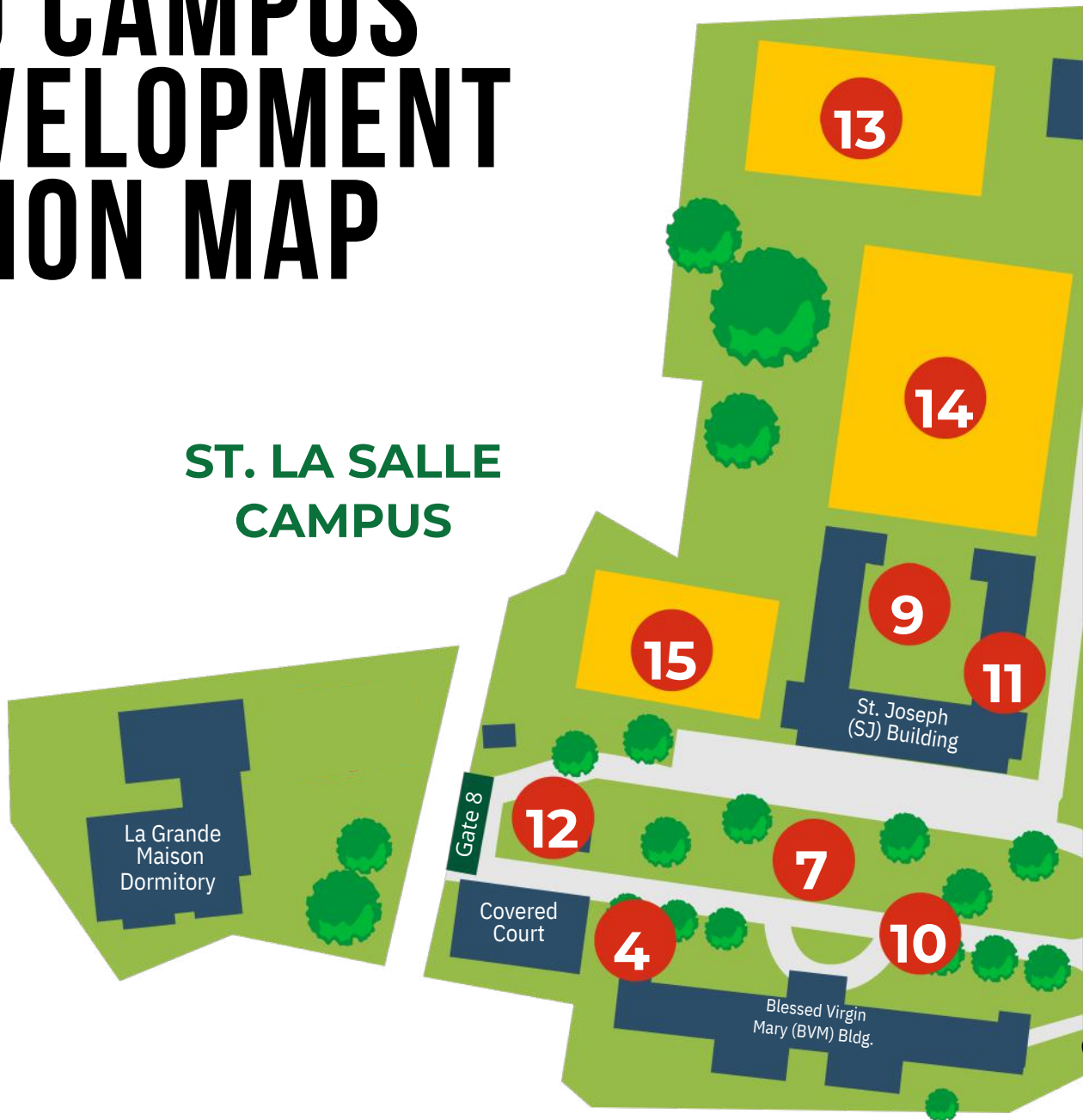
SITE

4RXW+98 Ozamiz City,
Misamis Occidental



LSU CAMPUS DEVELOPMENT VISION MAP

ST. LA SALLE CAMPUS

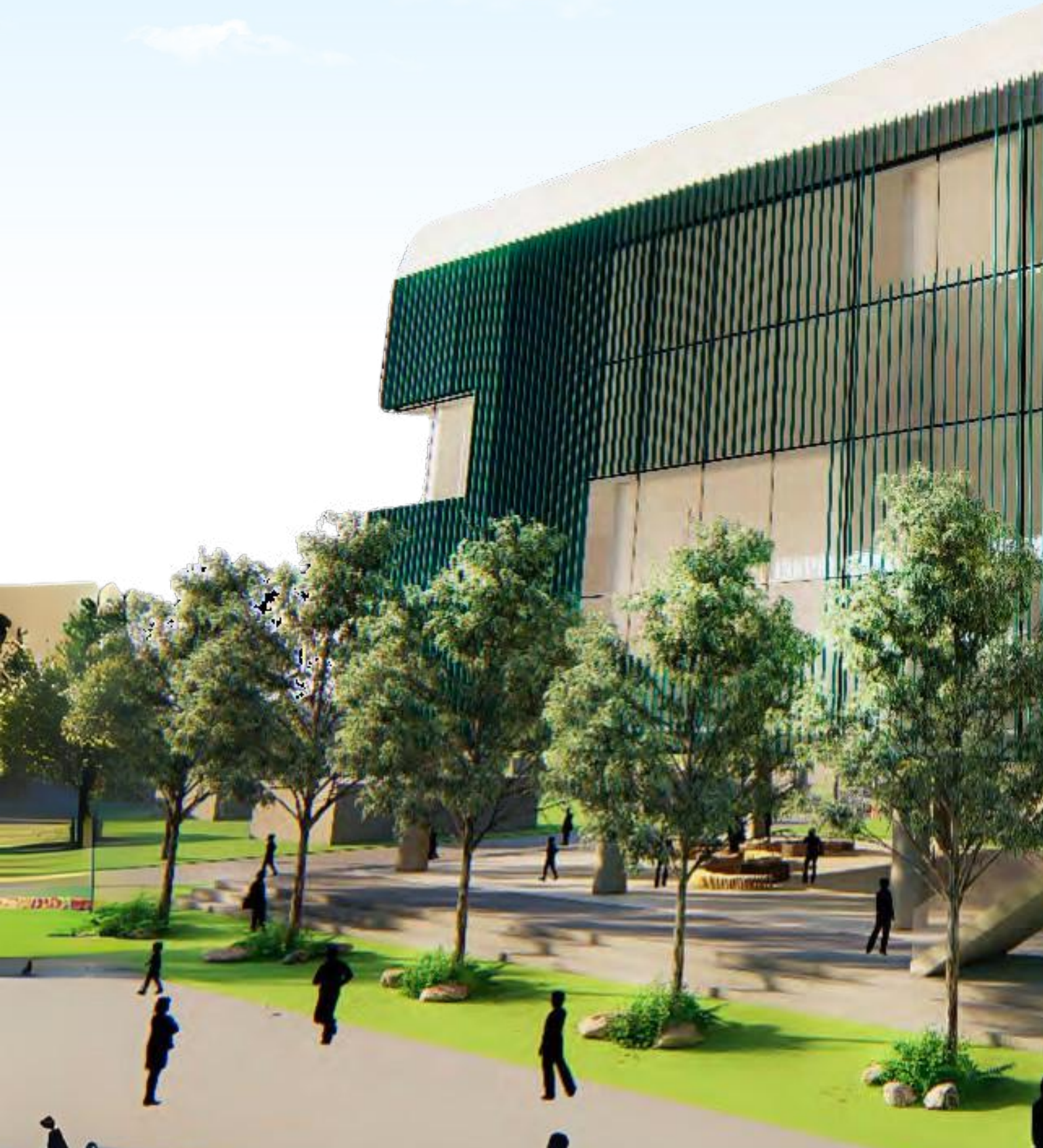


- | | |
|--------------------------------------------|---------------------------------------------|
| 1 Business Development Spaces | 9 SJ Building 4th Floor Construction |
| 2 Banquet Hall & Exhibit Bay | 10 Campus 1 and 2 Walkways |
| 3 Oval | 11 SJ Building Laboratories |
| 4 Park Cafe Playground | 12 University Gates Renovation |
| 5 Civil Engineering Laboratory | 13 Sports Complex |
| 6 Administrative Offices Renovation | 14 New Academic Building |
| 7 Central Park St. | 15 Learning Resource Center |
| 8 Columban Piazza | |

ST. COLUMBAN CAMPUS



COMMUNITY LIBRARY TARGET IMPLEMENTATION: 2028





LA SALLE UNIVERSITY

LIBRARY

The Learning Resource Center draws inspiration from contemporary academic libraries and modern learning commons. It focuses on open collaborative areas, digital integration, and flexible study zones.

The facility aims to accommodate large numbers of students simultaneously, offering both group and individual spaces. When complete, it will become the academic hub of the campus. Its timeline spans from planning in 2024 to implementation by 2028.



LANDSCAPE DEVELOPMENT PLAN



An architectural rendering of a modern building's courtyard. The building features a prominent green roof with vertical slats. The courtyard is paved with light-colored stone tiles and includes a set of stairs, a man sitting on a bench, and a man kneeling with a young girl. Lush greenery, including palm trees and other plants, is integrated into the design. A large black rectangular box is overlaid on the left side of the image, containing the letters 'LS' and the title 'ST. LA SALLE BUILDING LANDSCAPE'.

LS

ST. LA SALLE
BUILDING
LANDSCAPE















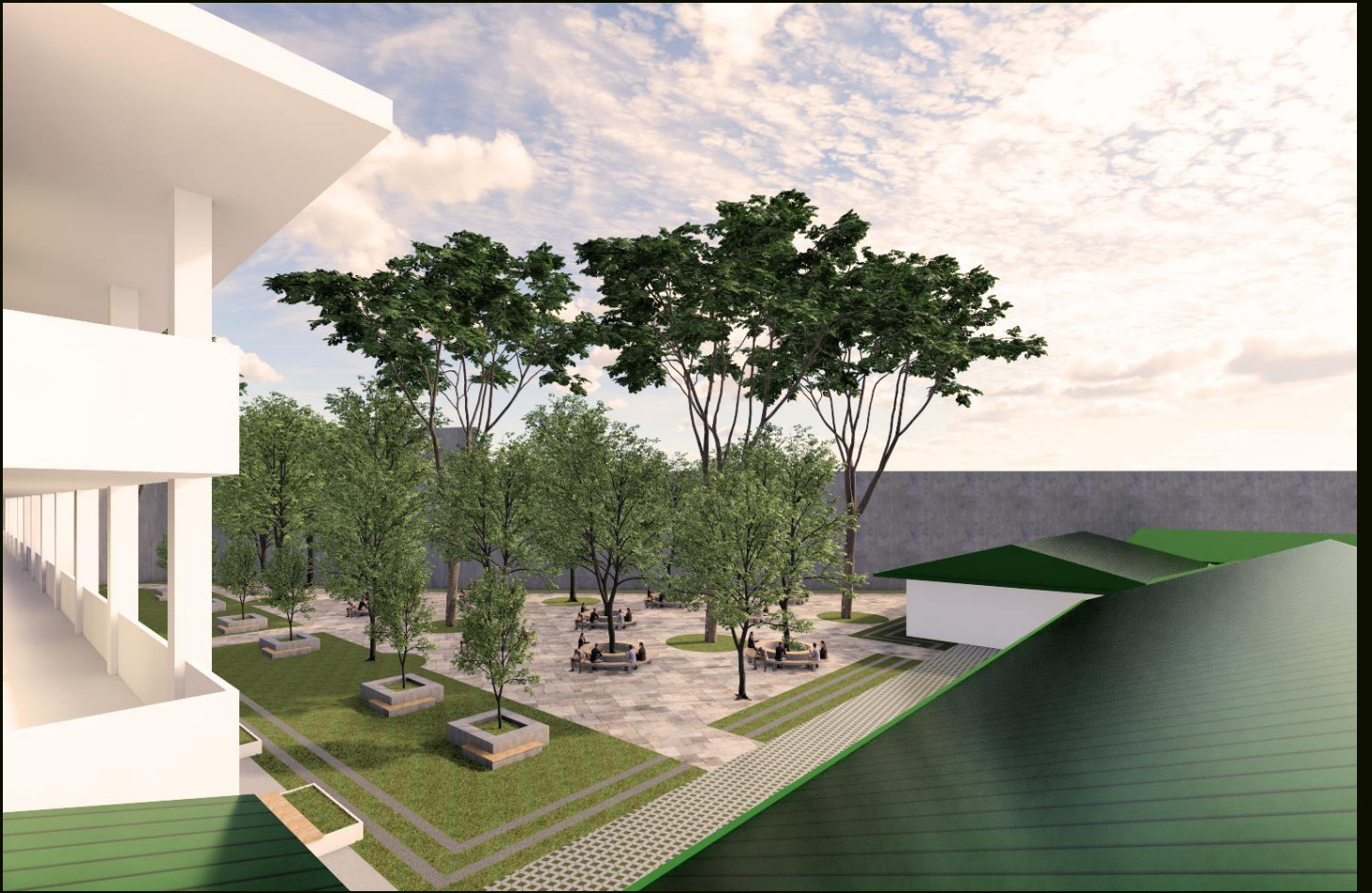




SB

ST. BENILDE
BUILDING
LANDSCAPE











SC

ST. COLUMBAN
AREA





The St. Columban area introduces a modern campus landmark with landscaped open spaces. Inspired by European squares, the design emphasizes community interaction with open walkways and greenery. It connects key areas such as the SC quadrangle and interior roads. The space serves as both a transit point and a social gathering spot. Capacity depends on the space used, but the quadrangle phase alone supports hundreds of students. The development enhances both function and aesthetic appeal of the campus.









Transformative innovations in the LSU Saint Columban (SC) Area will include replacing the existing flooring, revitalizing the aesthetics and functionality of this central campus space. This strategic enhancement will elevate the plaza area beyond daily use, equipping it to seamlessly host a wider array of institutional events and vibrant student gatherings.

The modernized SC grounds will serve as a dynamic heart of campus life, fostering a stronger sense of community and providing a more versatile venue for memorable university experiences.









THE ARTS CENTER



Animo La



Built in 1982, The Arts Center is originally built to provide a premier venue for the arts and sporting events.

The current spaces, including a stage, dance rooms, a music room, as well as an art gallery and venues for visual arts will be renovated and provided with new equipment to cater performances and events.

The facilities are designed to provide an immersive experience for both performers and audiences, with acoustics, lighting, and seating arrangements. The Arts Center is a hub for artistic expression and creativity, serving as a cultural cornerstone of the university community.

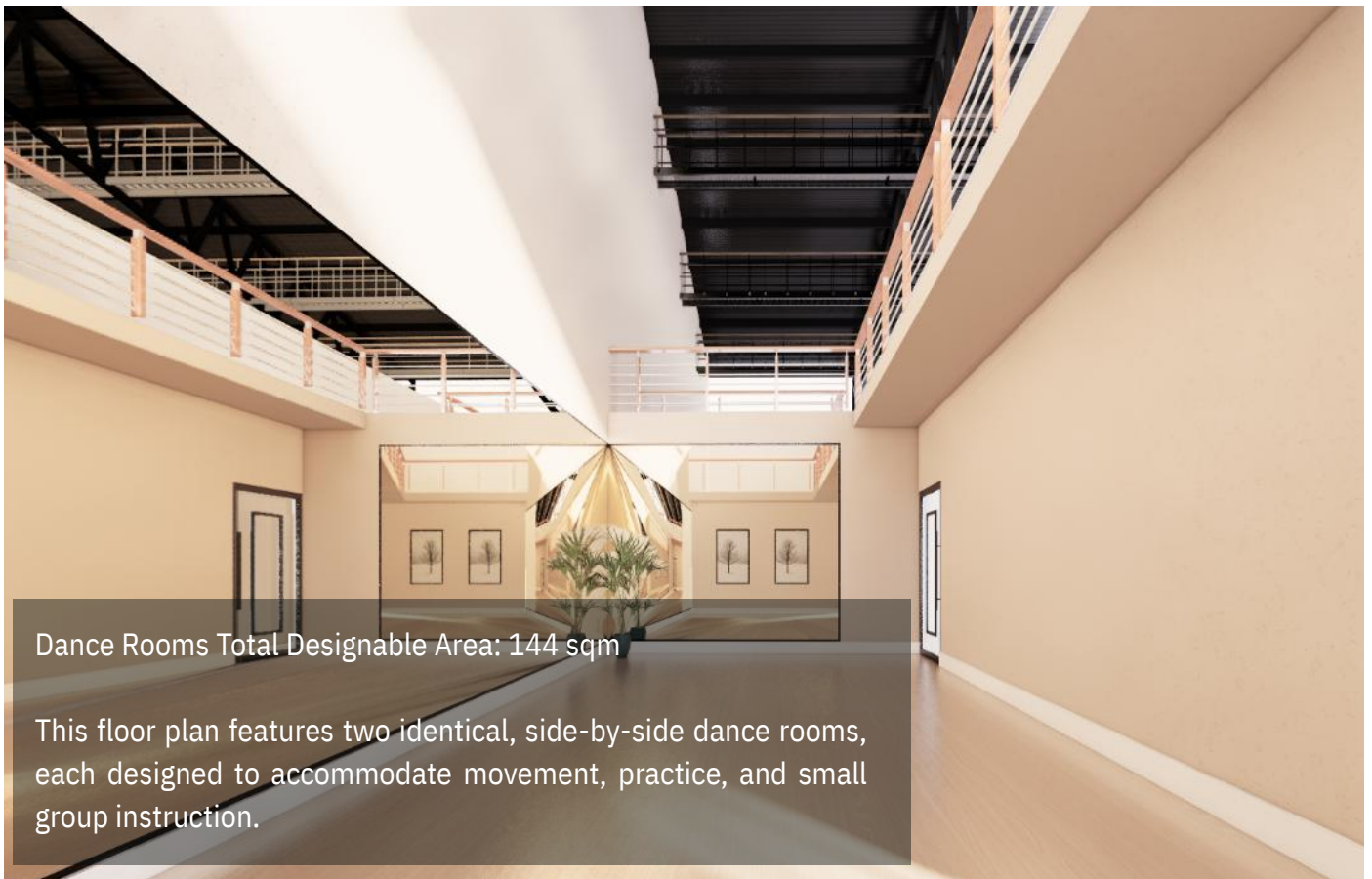
Salle



INTERIOR DESIGNS



DANCE ROOMS



Dance Rooms Total Designable Area: 144 sqm

This floor plan features two identical, side-by-side dance rooms, each designed to accommodate movement, practice, and small group instruction.











LSU OVAL















BVM

BLESSED
VIRGIN MARY









BEU PLAYGROUND



CENTRAL PARK CAFE















GALA RETREAT HALL





The Gala Retreat Hall follows a modern rustic style, combining exposed trusses, wood, and glass for a warm yet contemporary feel. Large windows frame natural views, while balconies and a view deck enhance the serene environment. The total floor area reaches 1,039 sqm, divided into a function hall, dining area, and restrooms. The function hall holds up to 250 guests, while the dining hall serves 50. The view deck offers space for 30 people. Accessibility and ventilation were central to the design.









RETREAT CENTER MULTI-PURPOSE HALL

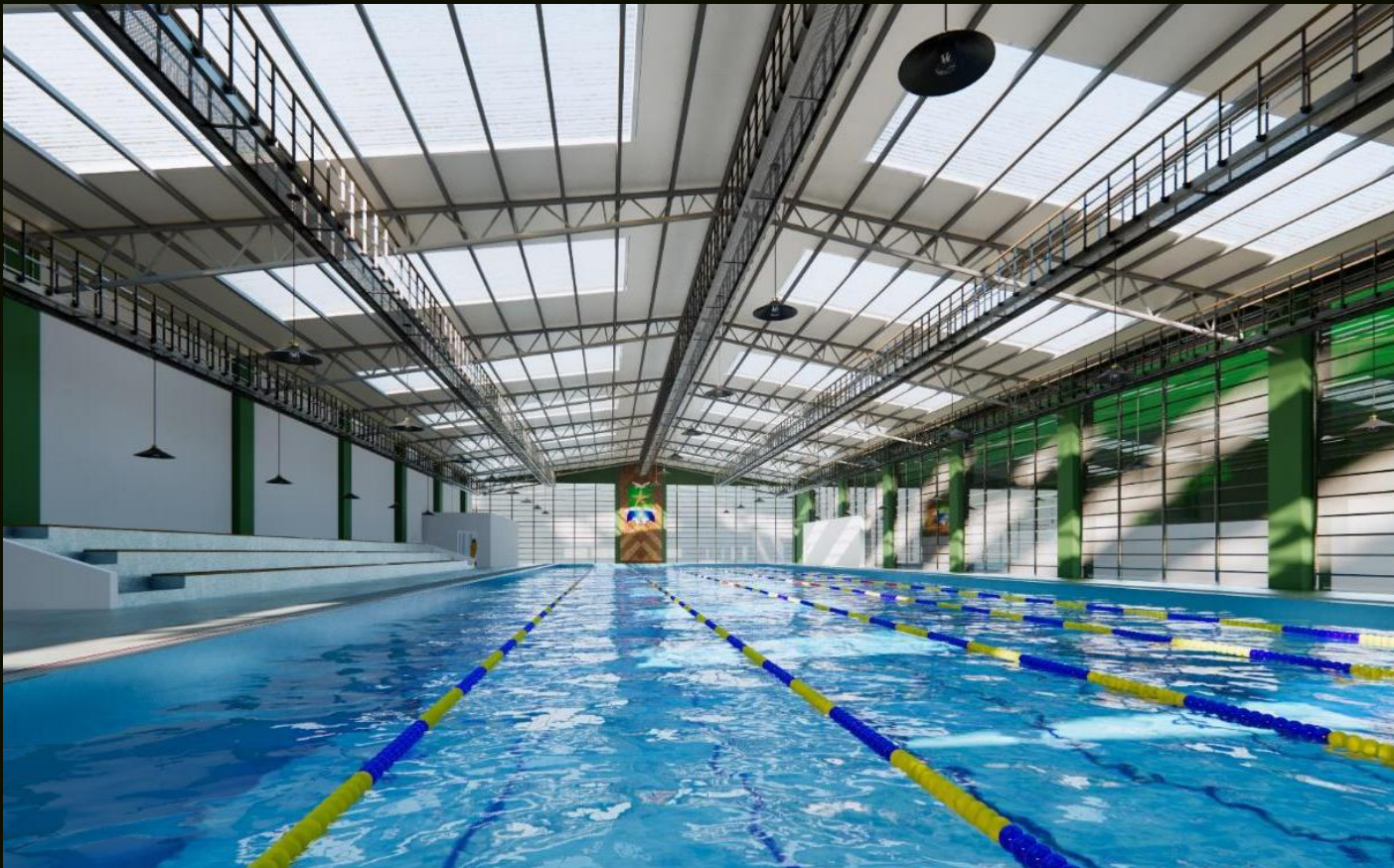


The multi-purpose hall offers a total designable area of 365 square meters, measuring 31.85 by 11.26 meters, with a capacity of up to 250 guests.

SPORTS COMPLEX













LSU BOARD ROOM









OPAC



LSU LAW LIBRARY



Minimalist Functionality

The design embraces simplicity and efficiency, ensuring that every element serves a purpose. Clean lines, clutter-free surfaces, and a neutral color palette create an organized and distraction-free environment. Furniture is sleek and multi-functional, allowing for adaptability in different study settings.

Collaborative & Private Zoning

The layout is carefully planned to support both group collaboration and individual study. Open communal spaces allow for discussions and teamwork, while glass-enclosed rooms provide a sense of privacy without complete isolation.

Warm Industrial Aesthetic

The combination of metal, glass, and wood elements gives the space a refined yet welcoming industrial feel. Black metal shelving and glass partitions create a bold contrast, while wood accents and matte-finish furniture soften the overall look.





BVM

4TH FLOOR IMPROVEMENTS





BVM AUDITORIUM





BVM CLASSROOM



BVM COMPUTER ROOM

CAMPUS 2 ROAD CONCRETING LOCATION

Located in front of the St. Joseph Building
Road Stretch: 250 meters







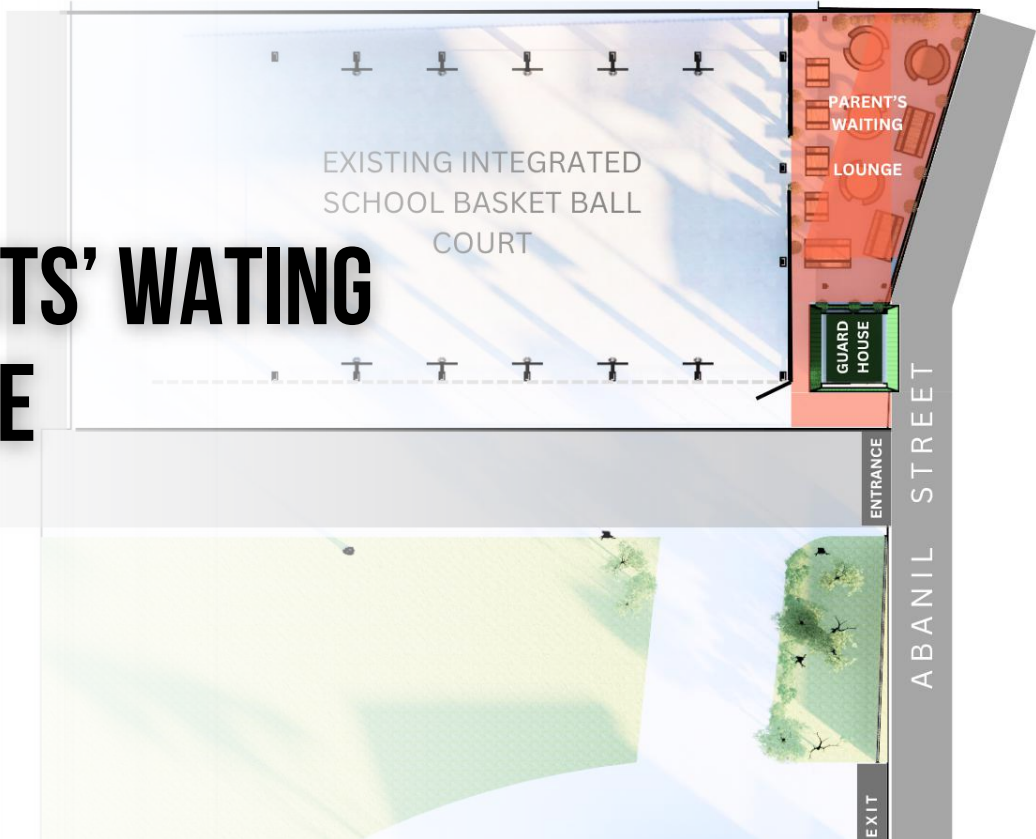
GATE 7

VALCONCHA ST. GATE





PARENTS' WAITING LOUNGE





BROTHERS' HOUSE FRONT YARD LANDSCAPE PHASE 1

Phase 1 improvements include landscape concrete blocks with bollards and side walk.





BROTHERS' HOUSE FRONT YARD LANDSCAPE PHASE 2

Phase 2 will cover fence upgrades.





PROJECT COST ESTIMATIONS

PROJECT	ESTIMATED COST (in Philippine Peso with 5% inflation consideration)		
	2025-26	2026-27	2027-28
Community Library (Learning Resource Center)	290 M	304.5 M	319.725 M
LSU New Academic Building	400 M	420 M	441 M
Covered Walk (Campus 1- St. columban Campus)	2.5 M	2.625 M	2.756 M
LS Ground Landscape	2 M	2.1 M	2.205 M
St. Benilde Landscape	2.5 M	2.625 M	2.756 M
St. Columban Grounds	5 M	5.250 M	5.512 M
Arts Center Center Kiosk with Landscaping	4 M	4.2 M	4.410 M
Arts Center Interior	32 M	33.6 M	35.280 M
Arts Center Bleachers	8.5 M	8.925 M	9.371 M
Arts Center Backstage	15 M	15.750 M	16.537 M
Arts Commercial Spaces	6.3 M	6.615 M	6.945 M
LSU Oval Improvement and Landscape	12.5 M	13.125 M	13.781 M
BVM Grounds Landcape	1.5 M	1.575 M	1.653 M
BVM Playground	1.5 M	1.575 M	1.653 M
Central Park Cafe (Campus 1 and 2)	7.5 M	7.875 M	8.268 M
Gala Retreat Hall	32 M	33.6 M	35.280 M
LSU Sport's Complex	358 M	375.9 M	394.695 M
LSU Board Room	3.7 M	3.885 M	4.079 M
LSU Law Library	2.1 M	2.205 M	2.315 M
Campus 2 Road Concreting	5.5 M	5.775 M	6.063 M

LSU CAMPUS DEVELOPMENT CENTER

ENGR. FLORDELIZA CABANG

Vice President
Administrative Services



CONTRIBUTORS:



Christian Jason Robles



Ar. Marife Bayhon



Lorje Korina Sumagang



Ar. Spencer Patiluna



Kristina Celeste Vedra



Israel Gallogo

DISCLAIMER

The information presented in this Campus Development coffee table book, including estimated project costs, designs, and target completion dates, is subject to change. These figures and plans are based on current projections and are intended for illustrative purposes only. Unforeseen circumstances, market fluctuations, design refinements, or operational considerations may necessitate adjustments without prior notice. La Salle University Ozamiz reserves the right to modify any aspect of these projects as deemed necessary for their successful realization.

SUPPORT OUR MISSION

bit.ly/LSU-Reimagined



REIMAGINED

La  **Salle**
Ozamiz | Reshaping Futures

La Salle University

