



Courier

Type Speciman Book



www.ibm.com

Table of Contents

"A letter can be just an ordinary messenger, or it can be the courier, which radiates dignity, prestige, and stability."

	Pages
• History	5
• The Creator	6–7
• Font Anatomy	8–11
• Weights	12–13
• Point size	14–17
• Glyphs	18
• Timeline	19
• Panagram	20

1995

COURIER

Case #25473 8970

HISTORY OF THE FONT

Courier was designed in 1955 by Howard Kettler. IBM used it for their typewriters but didn't secure the rights to the design. Numerous companies copied the font, making it the standard typeface for typewriters. This didn't stop IBM from having Adrian Frutiger redesign the font for their famous Selectric series of typewriters.

Born 1919, died 1999. designed Courier in 1955 for IBM. Everyone recognizes it as the face originally designed for use on typewriters. A typical characteristic of older typewriters is that all characters are given the same amount of space regardless of their width

Typewriters have all but disappeared from the office and the practical need for such a typeface with them. Nevertheless, the attractive imperfections of Courier have long been appreciated for their usefulness in design applications. It is therefore often seen in advertisements, especially when the subject deals with messages, telegrams, etc.

Linotype offers Courier font in two different versions. First is Courier by Linotype, which is available in Regular and Bold weights, each with obliques. Courier by Linotype's terminals are rounded. The second version, called simply Courier comes in the following weights: Regular, Medium, and Bold, with optional oblique, Central European, and Cyrillic companions. Courier's terminals are flat.

A	B	C	D
E	F	G	H
I	J	K	L
M	N	O	P
Q	R	S	T
U	V	W	X
Y	Z		

The Creator

Howard George "Bud" Kettler

Born on September 10, 1919 in New Bremen, Ohio, Howard Kettler had a fascination with type and design from an early age. He was a high school newspaper cartoonist, a member of the Navy during World War II, a postal clerk, and a newspaper editor, you name it.

On October 1, 1952 he accepted a position designing type in Poughkeepsie, New York for IBM. Just three years later, in 1955, he designed the "Courier" typeface which was adapted as a standard for IBM typewriters and in the future as well to keep going on further.

Bud's colleagues loved him at IBM. Paul Rainey, an IBM protégé, said, "One thing he did that no other font designer did was to rotate the mock up page a full 180 degrees. He wanted to make sure that one character stood out and was built different.

He explained that font designing was meant to be invisible to the reader. He said the reader should not be conscious of characters and just see words." Howard Kettler died 8 days after his 80th birthday on September 19th, 1999 in Lexington, KY.

His work included still classified engagements with the American Federal Bureau of Investigation and the Canadian Mounted Police. His self-professed most fulfilling assignment for IBM came in the form of designing a Braille font that would be very unique in the way it was created within the font.

The IBM Braille Writer, Roger Roberson, who worked with Bud for 24 years, said that he was always designing fonts in his spare time and changing fonts.

About Courier

Commissioned and designed for use by IBM in 1955, Courier is a monospaced slab serif typeface. Courier has had four primary uses. Designed for use with the typewriter, Courier's characters are deliberately crafted to be uniform in size.

This not only allows characters to be measured in linear inches for manual word counting, but also allowed for the replacement of characters when mistakes were made on typewritten pages and so on.

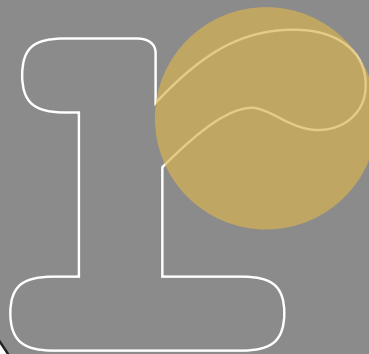
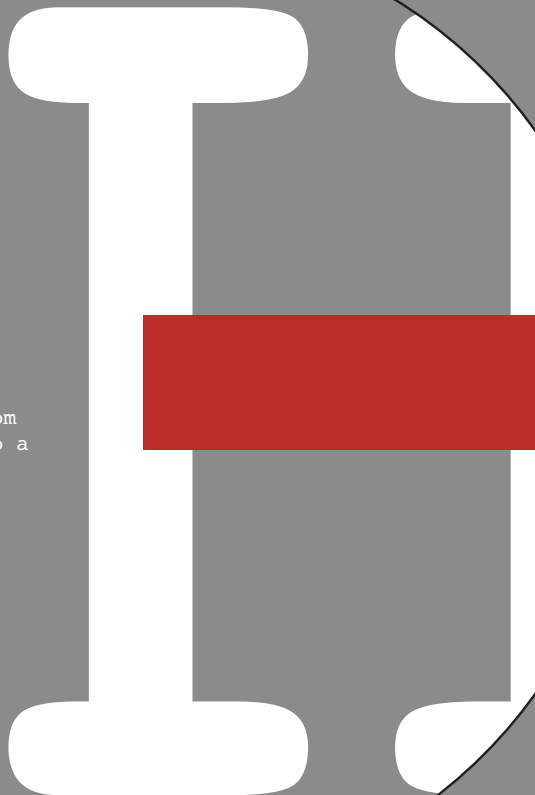
It was the ubiquitous typeface of the American typewriter. Industry standard screenplays are written in 12 point Courier. It naturally evolved as the default font for operating system languages, and PostScript printing devices within technology.

The most prominent use of Courier has come from its adoption, in the form of 12pt Courier New, as the official typeface of the US State Department from 1955 through 2004. Courier was made to be the messenger of its time.

1 2 3 4
5 6 7 8
1 2 3 4
5 6 7 8
1 2 3 4
5 6 7 8
1 2

Cross Bar

The horizontal or sloping stroke enclosing the bottom of the eye of an e is also a crossbar.

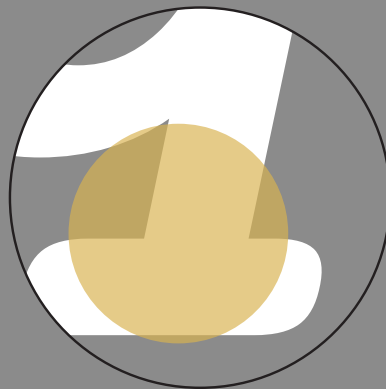


Ear

Small stroke on a letter

Descender

a descender is the portion of a letter that extends below the baseline of a font.





m

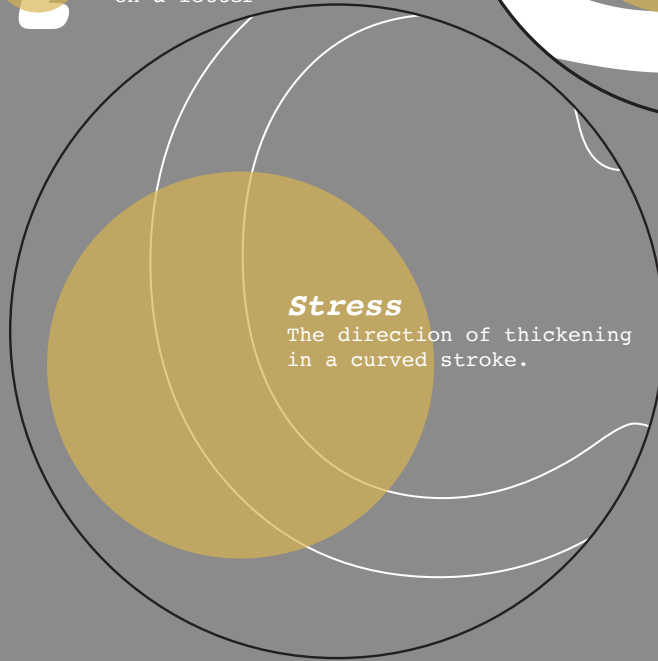
Shoulder

The curved stroke
on a letter



Spine

A small
projection off
a main stroke
found on many
capital Gs.

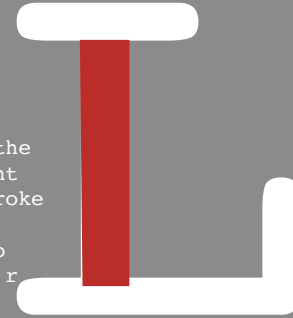


Stress

The direction of thickening
in a curved stroke.

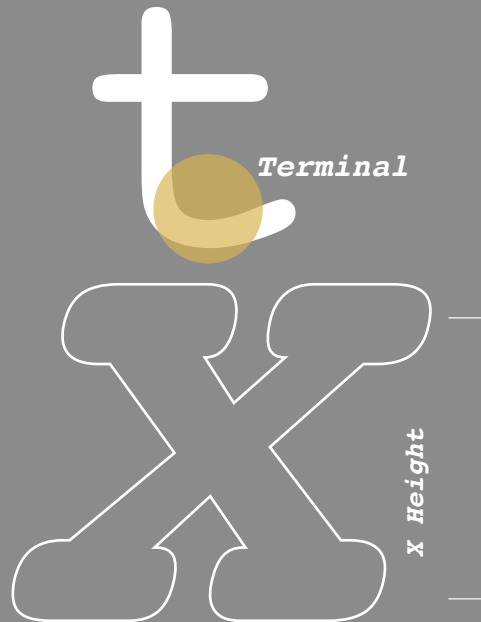
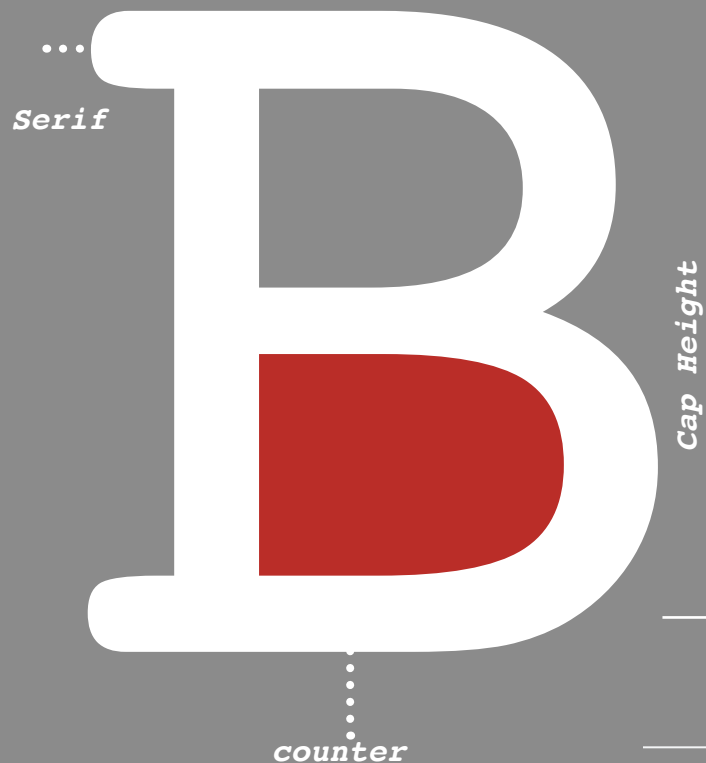
Stem

A straight
vertical
stroke (or the
main straight
diagonal stroke
in a letter
which has no
verticals). r

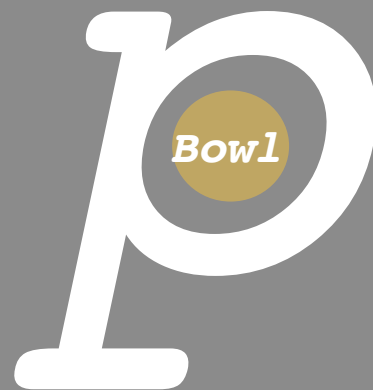
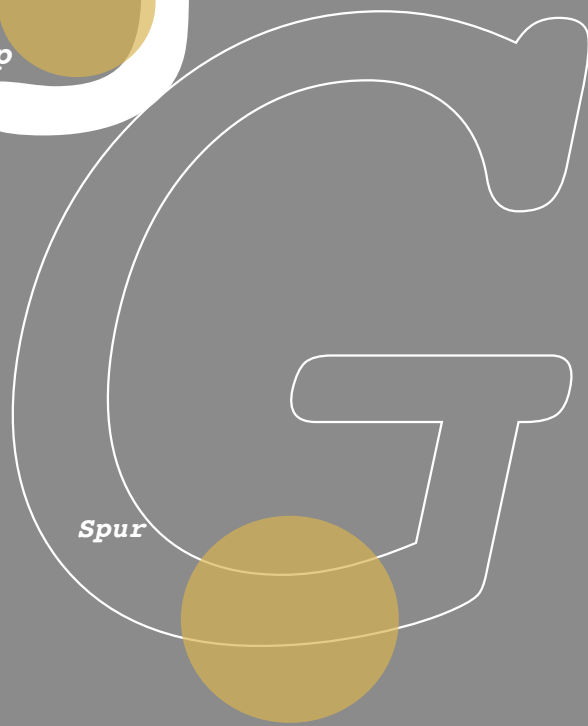
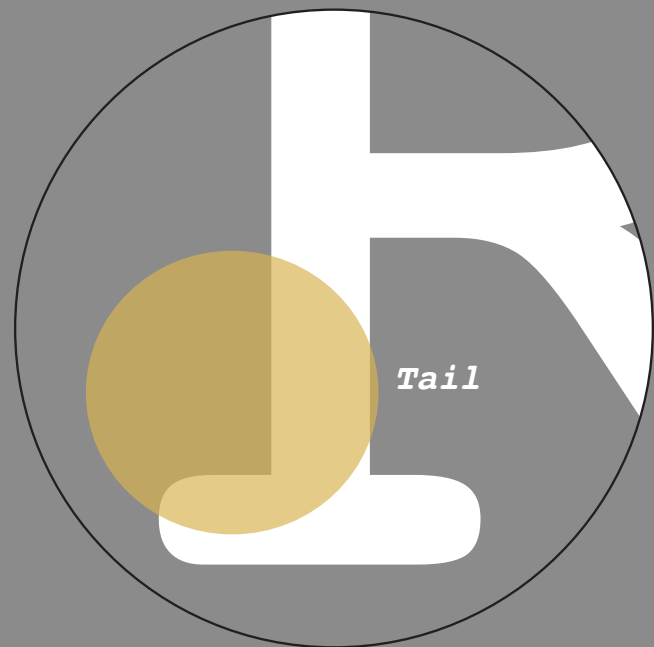
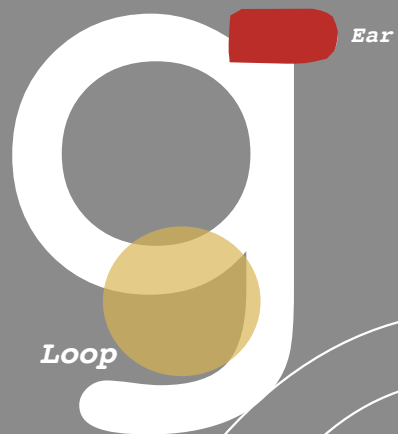


FACT!

Courier has been adapted to use as a computer font and versions of it are installed on most desktop computers.



only your eyes



4 *Weights*

1. Courier Regular
2. *Courier Oblique*
3. **Courier Bold**
4. ***Bold Oblique***

Regular abcdefghijklmnopqrstuvwxyz
ABCDEFGHIJKLMNOPQRSTUVWXYZ
12345678910111213141516

Oblique *abcdefghijklmnopqrstuvwxyz*
ABCDEFGHIJKLMNOPQRSTUVWXYZ
12345678910111213141516

Bold **abcdefghijklmnopqrstuvwxyz**
ABCDEFGHIJKLMNOPQRSTUVWXYZ
12345678910111213141516

Bold Oblique ***abcdefghijklmnopqrstuvwxyz***
ABCDEFGHIJKLMNOPQRSTUVWXYZ
12345678910111213141516

FACT!

The font is used to emulate typewriter output for reports, tabular work and technical documentation of font use.

11pt

12pt

14pt

18pt

24pt

30 pt

36 pt

48 pt

60 pt

72 pt

Typewriters have all but disappeared from the office and the practical need for such a typeface with them. Nevertheless, the attractive imperfections of Courier have long been appreciated for their usefulness in design applications. It is therefore often seen in advertisements, especially when the subject deals with messages, telegrams, etc.

Linotype offers Courier font in two different versions. First is Courier by Linotype, which is available in Regular and Bold weights, each with obliques. Courier by Linotype's terminals are rounded. The second version, called simply Courier comes in the following weights: Regular, Medium, and Bold, with optional oblique, Central European, and Cyrillic companions. Courier's terminals are flat.

72 pts = 1 inch

FACT!

The font you are
reading now is
Courier Regular

8pt The cat ran away from the dog

10pt The cat ran away from the dog

12pt The cat ran away from the dog

14pt The cat ran away from the dog

18pt The cat ran away from the dog

24pt The cat ran away from the dog

28pt The cat ran away from the dog

Bold

24pt

Today is the day to design

Oblique

18pt

Today is the day to design

Regular

14pt

Today is the day to design

Bold Oblique

12pt

Today is the day to design

Typographic Scale

m	m	m	m	m	m	m	m	m	m	m	m	m
6	8	10	11	12	14	18	24	30	36	48	60	72

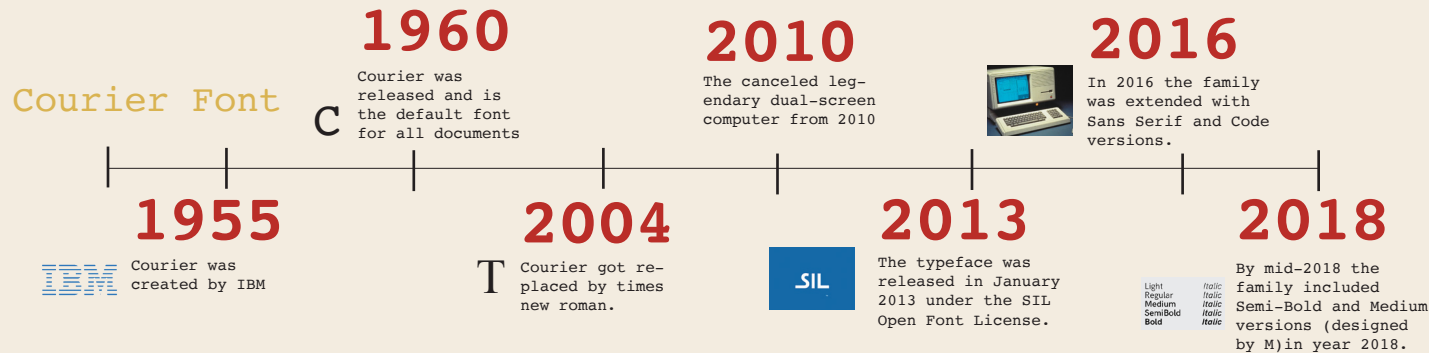
Glyphs & Ligatures

FACT!

Within courier there are 374 glyphs. Each one of them having a different weight as well as a unique style through each one.

!	#	\$	+	!	#	\$	+	!	#	\$	+
@	<	&	(@	<	&	(@	<	&	(
®	ç	©	^	®	ç	©	^	®	ç	©	^
Q	A	P	U	Q	A	P	U	Q	A	P	U
K	°	⌊	Ⓔ	K	°	⌊	Ⓔ	K	°	⌊	Ⓔ
:	?	\$	*	:	?	\$	*	:	?	\$	*

Typeline: 1950's-2020



Regular

8pt ABCDEFG

10pt Graphic design is my passion

14pt Graphic Design is my passion

18pt Graphic Design is my passion

24pt Graphic design is my passion

Oblique

8pt ABCDEFG

10pt *Graphic design is my passion*

14pt *Graphic Design is my passion*

18pt *Graphic Design is my passion*

24pt *Graphic design is my passion*

Bold

8pt ABCDEFG

10pt Graphic design is my passion

14pt Graphic Design is my passion

18pt Graphic Design is my passion

24pt Graphic design is my passion

Bold Oblique

8pt ABCDEFG

10pt *Graphic design is my passion*

14pt *Graphic Design is my passion*

18pt *Graphic Design is my passion*

24pt *Graphic design is my passion*



C C O O U U R R I I E E R R

— ©2021 Designed by :Holly Wright-Fletcher

1 2 3 4 5 6 7 8 9 0 * back
Qq Ww Ee Rr Tt Yy Uu Ii Oo Pp @
: Aa Ss Dd Ff Gg Hh Jj Kk Ll ; shift
shift key Zz Xx Cc Vv Bb Nn Mm " ' ?/