



WOMEN ARTISTS:

TEXTILES

**COOPER
HEWITT**

 Smithsonian Design Museum

ABOUT THE MUSEUM 1

ABOUT THE COLLECTION

COLLECTION HIGHLIGHTS 2

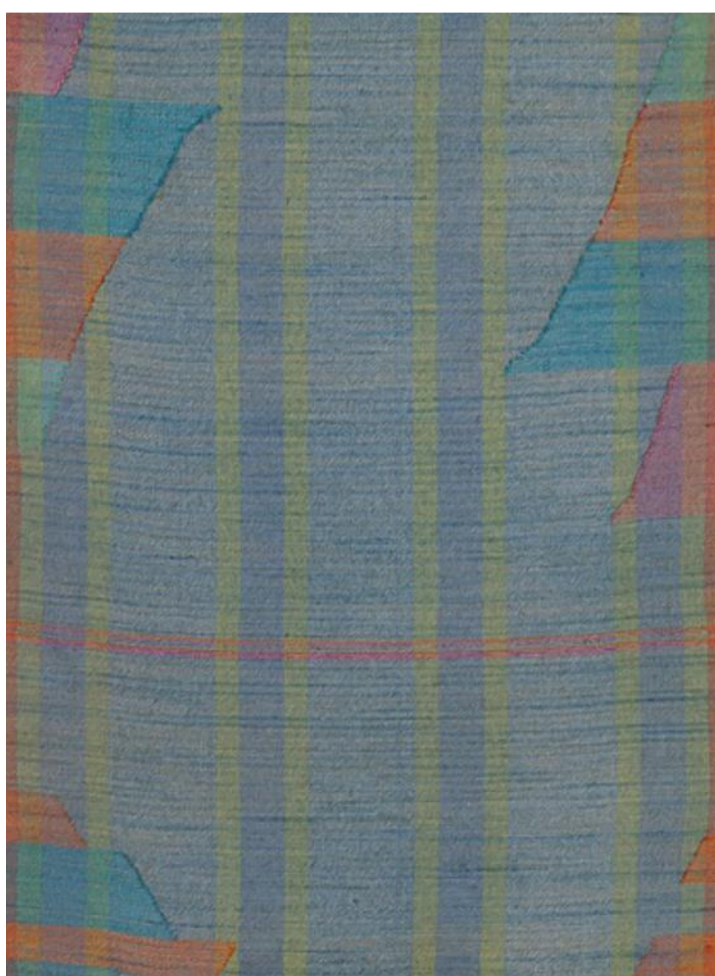
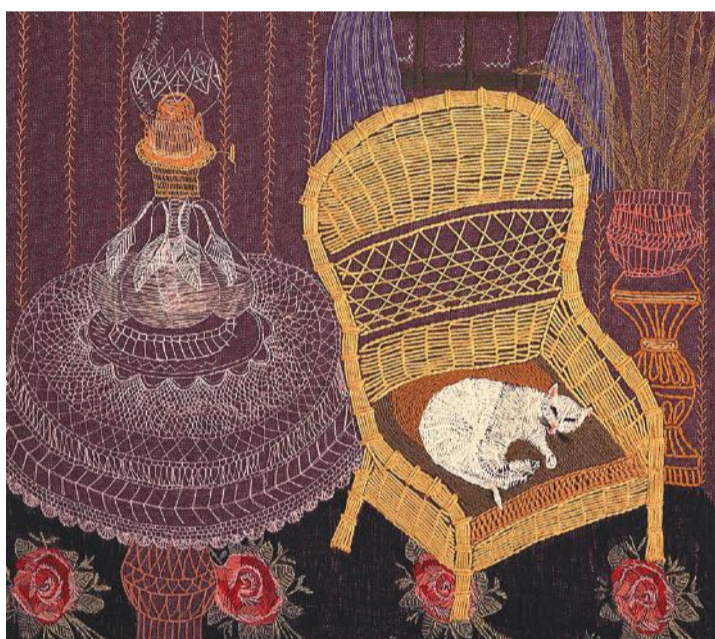
SHEILA HICKS 3

LYDIA BUSH-BROWN 4

MARY ELLEN CRISP

MARISKA KARASZ 5

EVA ANTTILA



**Embroidered Picture,
Victoriana
(USA 1945-47)**

Designed and made by Mariska Karasz. Acquired in 1977. Its medium is wool and its technique is embroidered in herringbone, feather, stem, chain, detached looping satin, roumanian, looping, couching and honeycomb filling stitches on plain weave foundation. It is a part of the Textiles department. It is credited "Gift of Solveig Cox and Rosamond Berg, the artist's daughter."

H x W: 27 15/16 x 27 3/16 in.

Runner (USA 1928)

Designed and woven by Edith Huntington Snow. Acquired in 1956. Its medium is silk and its technique is plain weave with inlaid areas along sides. It is a part of the Textiles department.

H x W: 48 7/16 x 17 11/16 in.

**Hanging, Röd Crocus (Red Crocus)
(Sweden 1945)**

Designed and woven by Ann-Mari Forsberg and manufactured by Märta Måås-Fjetterström. Acquired in 1964. Its medium is linen warp, wool and linen weft and its technique is plain weave with discontinuous wefts (tapestry). It is a part of the Textiles department. It is credited "Gift of Elizabeth Gordon."

H x W: 7 ft. 1/4 in. x 55 1/8 in.

ABOUT THE MUSEUM

Cooper Hewitt is the nation's only museum dedicated to historic and contemporary design, with a collection of over 210,000 design objects spanning thirty centuries. Located in the landmark Andrew Carnegie mansion and boasting a beautiful public garden, Cooper Hewitt makes design come alive with unique temporary exhibitions and installations of the permanent collection.

ABOUT THE COLLECTION

Throughout the 20th century, women artists explored the purely artistic possibilities of traditional textile techniques like weaving, knitting, embroidery, and dyeing. While the practice is most closely associated with the Fiber Arts movement of the 1950s – 1970s, and with artists like Lenore Tawney and Sheila Hicks, it began long before with the expressive embroideries of Mariska Karasz and Marguerite Zorach and continues to the present day.

**COOPER
HEWITT**

 Smithsonian Design Museum

COLLECTION HIGHLIGHTS



Hanging, The Pigeons
(Finland 1958)

Designed and woven by Dora Jung. Acquired in 1959. Its medium is linen and its technique is satin damask with discontinuous supplementary weft patterning (brocade). It is a part of the Textiles department. It is credited "Museum purchase from Au Panier Fleuri Fund."

H x W: 6 ft. 10 11/16 in. x 20 11/16 in



Hanging, Red Royal
(USA 1976)

Designed and made by Chunghi Choo. Acquired in 1985. Its medium is silk, synthetic lining and its technique is stitch resist on sheer plain weave. It is a part of the Textiles department. It is credited "Gift of Jack Lenor Larsen."

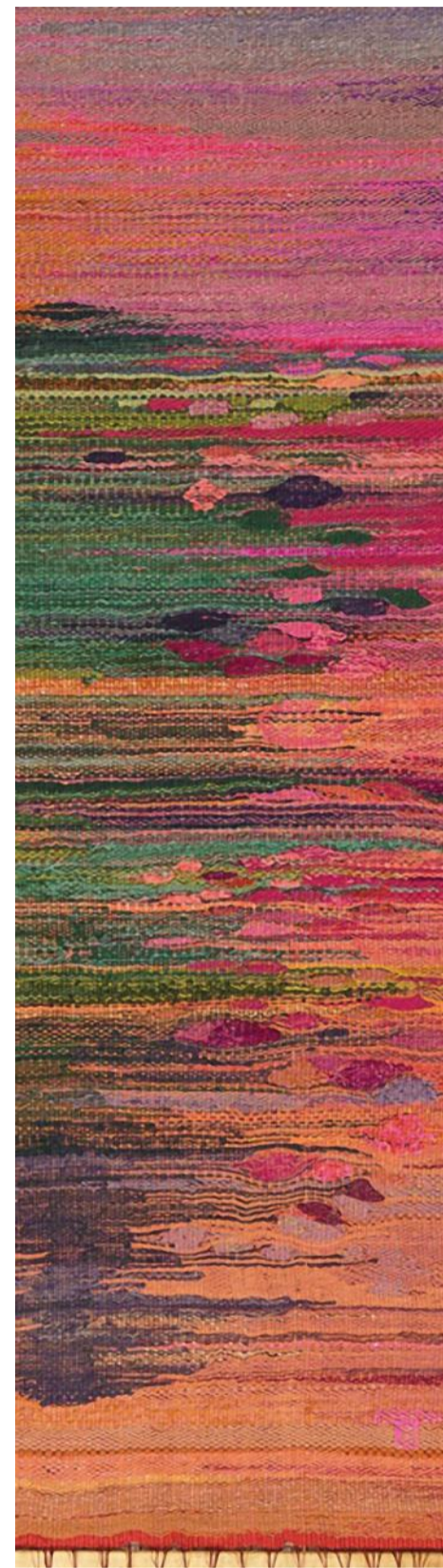
H x W: 116 15/16 x 34 1/4 in



Hanging, Grandmother and Children with Tulips
(Denmark 1950-60)

Designed and woven by Ann-Mari Kornerup. Acquired in 1964. Its medium is wool and its technique is plain weave with discontinuous wefts (slit tapestry). It is a part of the Textiles department. It is credited "Gift of Elizabeth Gordon."

H x W: 41 9/16 in. x 14 in

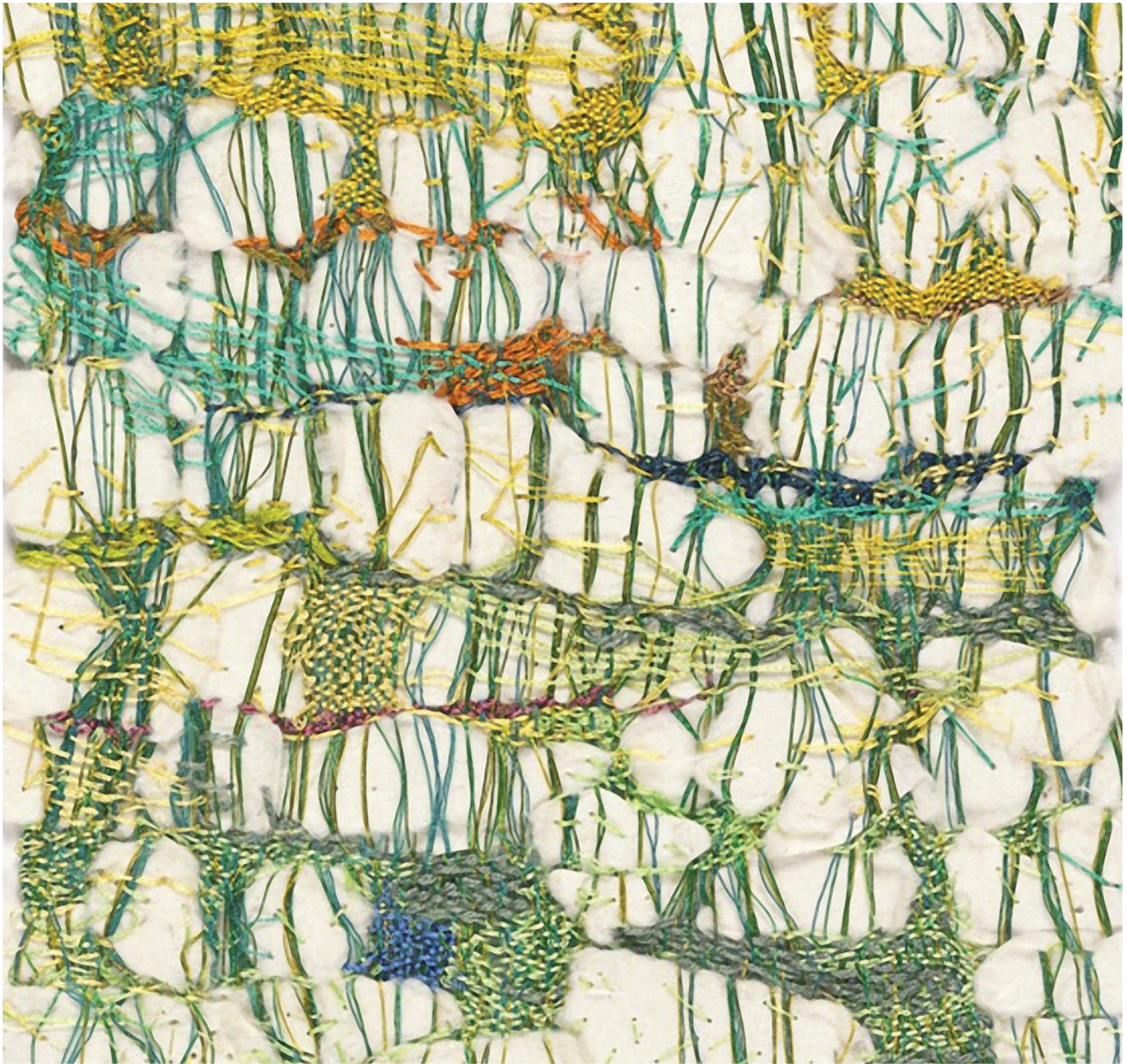


Hanging, Reflections
(USA 1959-60)

Designed and woven by Lenore Tawney. Acquired in 1964. Its medium is warp: red = linen, orange and pink = cotton, orange and yellow = silk, wefts: wool, viscose, silk, cotton and its technique is plain weave with discontinuous wefts (tapestry). It is a part of the Textiles department. It is credited "Gift of Elizabeth Gordon."

Warp x Weft: 58 in. x 29 1/2 in

SHEILA HICKS



Textile, Quarry Spider (France 2003)

Designed by Sheila Hicks. Acquired in 2006. Its medium is cotton, handmade japanese rice paper and its technique is woven and embroidered. It is a part of the Textiles department. It is credited "Museum purchase from General Acquisitions Endowment Fund."

Warp x Weft: 9 1/4 x 5 7/8 in

Textile, Papillon (USA 1997-2004)

Designed by Sheila Hicks. Acquired in 2006. Its medium is synthetic fiber, color transfer paper and its technique is woven and stitched synthetic fiber and color transfer paper. It is a part of the Textiles department. It is credited "Gift of Anonymous Donor."

Warp x Weft: 10 13/16 x 7 1/16 in



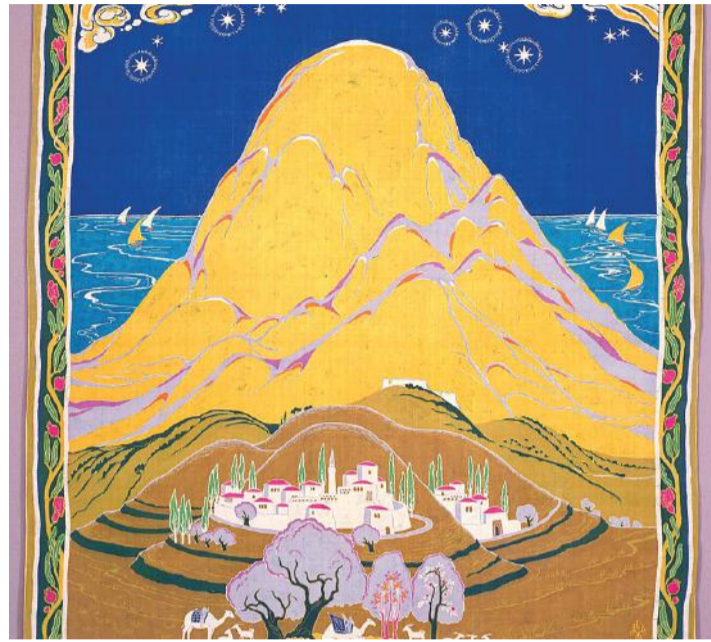
LYDIA BUSH-BROWN



Hanging, Flowering Tree (USA 1919-26)

Designed and made by Lydia Bush-Brown. Acquired in 1974. Its medium is silk and its technique is wax resist dyed (batik) on plain weave, predominately warp faced. It is a part of the Textiles department. It is credited "Gift of Lydia Bush-Brown."

H x W: 72. x 46 1/2 in



Hanging, The Golden Mountain (USA 1926-59)

Designed and made by Lydia Bush-Brown. Acquired in 1974. Its medium is silk and its technique is wax resist dyed (batik), warp-faced plain weave foundation. It is a part of the Textiles department. It is credited "Gift of Lydia Bush-Brown."

H x W: 54 1/8 x 47 1/16 in

MARY ELLEN CRISP



Embroidered Picture (USA 1930-39)

Designed and made by Mary Ellen Crisp. Acquired in 1993. Its medium is linen, wool and its technique is embroidered. It is a part of the Textiles department. It is credited "Gift of Joy L. Cartier and Lucile E. Callahan."

H x W (approx.): 17 3/8 x 22 1/2 in



Embroidered Picture, Remembrance of the West (USA 1945)

Designed and embroidered by Mary Ellen Crisp. Acquired in 1972. Its medium is wool embroidery on cotton foundation and its technique is embroidered in running, blanket, chain, feather, couching and satin stitches on plain weave. It is a part of the Textiles department. It is credited "Gift of Mrs. Arthur Crisp."

H x W: 6 ft. 4 3/8 in. x 9 ft. 5 3/8 in

MARISKA KARASZ



Panel (USA 1952)

Designed and embroidered by Mariska Karasz. Acquired in 1964. Its medium is wool and cotton on linen ground and its technique is feather stitch embroidered on plain weave. It is a part of the Textiles department. It is credited "Gift of Elizabeth Gordon."

H x W: 25 x 18 1/8 in



Hanging, Composition in Squares (USA 1950-53)

Designed and embroidered by Mariska Karasz. Acquired in 1964. Its medium is linen and cotton and its technique is embroidered on plain weave foundation. It is a part of the Textiles department. It is credited "Gift of Elizabeth Gordon."

H x W: 64 9/16 x 51 3/16 in

EVA ANTTILA



Hanging, Profiles (Finland 1952)

Designed and woven by Eva Anttila. Acquired in 1964. Its medium is wool, synthetic and its technique is plain weave with discontinuous weft (tapestry). It is a part of the Textiles department. It is credited "Gift of Elizabeth Gordon."

H x W: 29 3/4 x 38 5/8 in



Hanging, Evening (Finland 1949)

Designed and woven by Eva Anttila. Acquired in 1964. Its medium is wool and its technique is plain weave with discontinuous weft (tapestry). It is a part of the Textiles department. It is credited "Gift of Elizabeth Gordon."

H x W: 20 3/4 x 30 3/8 in

COOPER HEWITT

 Smithsonian Design Museum

HOURS

10 a.m. to 6 p.m. daily
Closed Thanksgiving and December 25

TICKETS

Adults | \$18
Seniors | \$12
Students | \$9
Visitors with Disabilities | \$10
Members & 18 & under | free
Pay-What-You-Wish Tuesday
6 p.m. to 8 p.m.

Buy your tickets online to save \$2
per ticket.

2 East 91st Street, New York, NY
WWW.COOPERHEWITT.ORG



Embroidered Picture (USA 1930-39)

Designed and made by Mary Ellen Crisp. Acquired in 1993. Its technique is embroidered. It is a part of the Textiles department. It is credited "Gift of Joy L. Cartier and Lucile E. Callahan."

H x W (approx.): 21 5/8 × 25 1/4 in