

HARRY GAMBOA JR.

Dawn/Eclipse of A New Era

June 4 - August 5, 2024



WWW.SANTACLARITAARTS.COM

Santa Clarita Arts Commission:

April Scott-Goss, *Chair*

Patti Rasmussen, *Vice-Chair*

Susan Shapiro, *Commissioner*

Andrea Vibe, *Commissioner*

Dr. Michael Millar, *Commissioner*

Santa Clarita Arts and Events:

Phil Lantis, *Arts and Special Events Manager*

Jennifer Thompson, *Arts and Special Events Admin*

Katherine Nestved, *Arts and Special Events Coordinator*

Stephanie Jacinto, *Arts Exhibit Assistant*

Meyah Ramos, *Social Media Admin*

(Cover Photo, Detail)

Portrait from DAWN/ECLIPSE OF A NEW ERA

©2024, Harry Gamboa Jr.

20 inches x 38 inches

B&W Photocopy on Bond

OUR MISSION

Our Vision

The City of Santa Clarita will be recognized as a "city of the arts," where the lives of residents, artists, and visitors are enriched through artistic and cultural experiences.

Mission Statement

To facilitate achievement in the arts for the benefit of the entire community.

Our Goals

1. Provide leadership for the advancement and support of arts and culture;
2. Promote economic development through the arts;
3. Enhance arts and cultural education

Arts Master Plan

The City of Santa Clarita commissioned the Arts Master Plan to create a long-term roadmap for arts, entertainment, and cultural development throughout the community over the next 10 years. The plan addresses several areas of specific interest: public art, Old Town Newhall Arts and Entertainment District, arts education, governance of the arts, cultural facilities, venues and spaces, supporting artists and arts organizations, arts funding, creative economy, marketing the arts, and celebrating diversity.

www.santaclaritaarts.com

INTRODUCTION

Nestled in the heart of Southern California, the City of Santa Clarita has blossomed into a cultural haven, brimming with artistic vitality and creative energy. With a commitment to fostering artistic expression and engaging the community, Santa Clarita Arts has become a driving force in promoting and supporting the arts in the area. From our various gallery locations to our art services, public art projects, and arts and education programs, Santa Clarita Arts has firmly established itself as a cornerstone of the city's cultural landscape.

One of the defining features of Santa Clarita Arts is its array of gallery locations, each offering a unique platform for artists to showcase their vision and talent to the community. The First Floor Gallery in City Hall serves as a prestigious exhibition space, showcasing both local and nationally recognized artists. The Canyon Country Jo Anne Darcy Library, Old Town Newhall Library, Valencia Public Library, Canyon Country Community Center, and Newhall Community Center all provide an intimate setting for visual arts exhibitions, while The MAIN celebrates a fusion of arts, hosting diverse comedy, musical, theatrical events and exhibitions throughout the year.

Beyond our gallery spaces, Santa Clarita Arts offers a wide range of art services designed to support local artists and nurture their creative journeys. Through artists grants to professional development opportunities, Santa Clarita Arts empowers artists to push the boundaries of their practice and thrive in the art world. Additionally, our art classes, workshops, and community outreach initiatives provide invaluable resources for individuals of all ages to explore their artistic passions and develop their skills.

A shining aspect of Santa Clarita Arts is our dedication to public art projects, which serve as vibrant landmarks that enrich the city's aesthetic landscape. From large-scale sculptures to interactive installations, these public art projects punctuate the urban environment, inviting residents and visitors to engage with art in unexpected and delightful ways.

The city's commitment to integrating art into public spaces not only enhances the visual appeal of Santa Clarita but also promotes a sense of community pride and connection.

In alignment with our commitment to arts education, Santa Clarita Arts has developed comprehensive programs that inspire the next generation of creative minds. Our arts education initiatives reach students across the city, providing access to arts experiences workshops, and mentorship opportunities. By nurturing young talent, Santa Clarita Arts ensures the continued growth and vitality of the local arts community, fostering a rich cultural legacy for generations to come.

The City of Santa Clarita has established itself as a vibrant arts destination, thanks to the visionary leadership and unwavering support of Santa Clarita Arts. Their dedication to providing gallery spaces, art services, public art projects, and arts education programs has transformed the city into a thriving hub of artistic expression. Through their unwavering commitment to the arts, Santa Clarita has elevated the cultural landscape, connecting artists, residents, and visitors in a celebration of creativity, diversity, and community.

We invite you to immerse yourself in the rich tapestry of Santa Clarita's arts scene and witness the profound impact of Santa Clarita Arts on the cultural fabric of the city. Let us embrace the power of art to inspire, unite, and transform, as we explore the boundless possibilities that lie within Santa Clarita's artistic landscape.

Welcome to the world of Santa Clarita Arts!

www.santaclaritaarts.com
@SantaClaritaArts

DAWN/ECLIPSE OF A NEW ERA

Harry Gamboa Jr. directed/photographed numerous performers as they incorporated their individual/collective bodies to form ephemeral actions on-site in Newhall to create digitized/print photographic imagery. The surreal meets the existential as portraiture becomes performative. Human presence on urban terrain is illusory as actuality confronts virtuality. The mirage of the masses is evasive but reverberates as myth via images persist in memory. The effect of "noir" is essential to Southern California but gray zones emerge in the **Dawn/Eclipse of A New Era**.

Performers: Yasaman Alipour, Jasmine Alvarez, Madelaine Auble, Fía Benitez, Ivan Brizuela, Christian Chavez, Wesley Chen, Duke Choi, Oscar Corona, Joseemar Correias, Adriana Dinapoli, Steven Fang, Stella Felice, Sage Fogel, Juan Herrera, Oltree Hui, Zoe Liu, Zoe J. Moon, Norma Nava, Jenny Nirgens, Benjamin Quiñones, Steven Reyes, Mir Rosales, Ruth Villalobos Saucedo, Elias Magallanes Talamas, Jake Thornton, Jazmin Urrea, Emiko Wilks, Shu Zhang

Harry Gamboa Jr. conceived/directed/photographed, **DAWN/ECLIPSE OF A NEW ERA**, an Ephemeral Action/Portraiture series.

ABOUT THE ARTIST

Harry Gamboa Jr. (Los Angeles, 1951 -)

Co-founder of Asco (1972-1985), Los Angeles-based performance group.

Founder/Director of the international performance troupe, Virtual Vérité (2005-2017).

Faculty, Photo/Media Program, California Institute of the Arts.

His work has been exhibited/collected internationally: AltaMed Art Collection (2022); J.Paul Getty Museum (2021); Museum of Contemporary Art (2020); Ludwig Museum, Cologne, Germany (2020); Smithsonian National Portrait Gallery (2019); Autry Museum of the American West (2018); Whitney Museum of American Art (2016, 1995 Biennial); Smithsonian American Art Museum (2014); Tate Liverpool (2013); Museo del Palacio de Bellas Artes, Mexico City (2011); Los Angeles County Museum of Art (2011); Centre Pompidou, Paris (2006).

His work has been featured: Los Angeles Times, The New York Times, Apollo, Spike, The Wall Street Journal, Financial Times, Frieze, Aperture, USA Today, Variety, Le Monde, Artforum, Art in America, Flash Art, DW, Terremoto, The New Yorker, Vanity Fair, Art Monthly and El País.

He is the author of Xoloitzcuintli Doppelgänger, essays in Pfeil No. 10 & 12 (Hamburg), Exploring Commonism A New Aesthetics of the Real (Antwerp); Urban Exile: Collected Writings of Harry Gamboa Jr. (University of Minnesota Press).

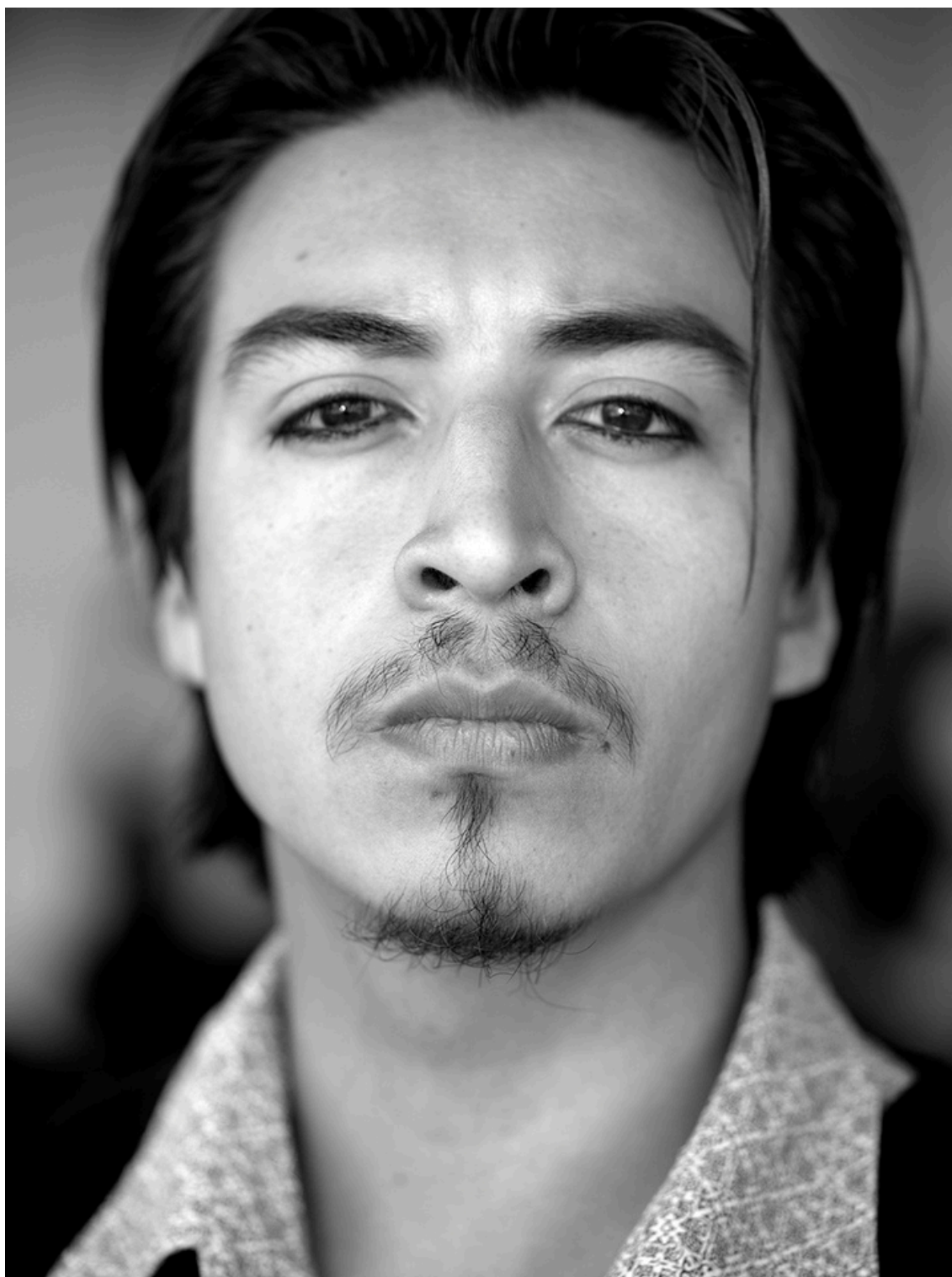


Portrait from DAWN/ECLIPSE OF A NEW ERA

©2024, Harry Gamboa Jr.

8.5 inches x 11 inches

B&W Photocopy on Bond



Portrait from DAWN/ECLIPSE OF A NEW ERA

©2024, Harry Gamboa Jr.

8.5 inches x 11 inches

B&W Photocopy on Bond



Portrait from DAWN/ECLIPSE OF A NEW ERA

©2024, Harry Gamboa Jr.

8.5 inches x 11 inches

B&W Photocopy on Bond



Portrait from DAWN/ECLIPSE OF A NEW ERA

©2024, Harry Gamboa Jr.

8.5 inches x 11 inches

B&W Photocopy on Bond



Portrait from DAWN/ECLIPSE OF A NEW ERA

©2024, Harry Gamboa Jr.

8.5 inches x 11 inches

B&W Photocopy on Bond



Portrait from DAWN/ECLIPSE OF A NEW ERA

©2024, Harry Gamboa Jr.

8.5 inches x 11 inches

B&W Photocopy on Bond



Portrait from DAWN/ECLIPSE OF A NEW ERA

©2024, Harry Gamboa Jr.

8.5 inches x 11 inches

B&W Photocopy on Bond



Portrait from DAWN/ECLIPSE OF A NEW ERA

©2024, Harry Gamboa Jr.

8.5 inches x 11 inches

B&W Photocopy on Bond



Portrait from DAWN/ECLIPSE OF A NEW ERA

©2024, Harry Gamboa Jr.

8.5 inches x 11 inches

B&W Photocopy on Bond



Portrait from DAWN/ECLIPSE OF A NEW ERA

©2024, Harry Gamboa Jr.

8.5 inches x 11 inches

B&W Photocopy on Bond



Portrait from DAWN/ECLIPSE OF A NEW ERA

©2024, Harry Gamboa Jr.

8.5 inches x 11 inches

B&W Photocopy on Bond



Portrait from DAWN/ECLIPSE OF A NEW ERA

©2024, Harry Gamboa Jr.

8.5 inches x 11 inches

B&W Photocopy on Bond



Portrait from DAWN/ECLIPSE OF A NEW ERA

©2024, Harry Gamboa Jr.

8.5 inches x 11 inches

B&W Photocopy on Bond



Portrait from DAWN/ECLIPSE OF A NEW ERA

©2024, Harry Gamboa Jr.

8.5 inches x 11 inches

B&W Photocopy on Bond



Portrait from DAWN/ECLIPSE OF A NEW ERA

©2024, Harry Gamboa Jr.

8.5 inches x 11 inches

B&W Photocopy on Bond



Portrait from DAWN/ECLIPSE OF A NEW ERA

©2024, Harry Gamboa Jr.

8.5 inches x 11 inches

B&W Photocopy on Bond



Portrait from DAWN/ECLIPSE OF A NEW ERA

©2024, Harry Gamboa Jr.

8.5 inches x 11 inches

B&W Photocopy on Bond



Portrait from DAWN/ECLIPSE OF A NEW ERA

©2024, Harry Gamboa Jr.

8.5 inches x 11 inches

B&W Photocopy on Bond



Portrait from DAWN/ECLIPSE OF A NEW ERA

©2024, Harry Gamboa Jr.

8.5 inches x 11 inches

B&W Photocopy on Bond



Portrait from DAWN/ECLIPSE OF A NEW ERA

©2024, Harry Gamboa Jr.

8.5 inches x 11 inches

B&W Photocopy on Bond



Portrait from DAWN/ECLIPSE OF A NEW ERA

©2024, Harry Gamboa Jr.

20 inches x 38 inches

B&W Photocopy on Bond



Portrait from DAWN/ECLIPSE OF A NEW ERA

©2024, Harry Gamboa Jr.

20 inches x 38 inches

B&W Photocopy on Bond



Portrait from DAWN/ECLIPSE OF A NEW ERA

©2024, Harry Gamboa Jr.

20 inches x 38 inches

B&W Photocopy on Bond



Portrait from DAWN/ECLIPSE OF A NEW ERA

©2024, Harry Gamboa Jr.

20 inches x 38 inches

B&W Photocopy on Bond



Portrait from DAWN/ECLIPSE OF A NEW ERA

©2024, Harry Gamboa Jr.

20 inches x 38 inches

B&W Photocopy on Bond



Portrait from DAWN/ECLIPSE OF A NEW ERA

©2024, Harry Gamboa Jr.

20 inches x 38 inches

B&W Photocopy on Bond



Portrait from DAWN/ECLIPSE OF A NEW ERA

©2024, Harry Gamboa Jr.

20 inches x 38 inches

B&W Photocopy on Bond



Portrait from DAWN/ECLIPSE OF A NEW ERA

©2024, Harry Gamboa Jr.

20 inches x 38 inches

B&W Photocopy on Bond



Portrait from DAWN/ECLIPSE OF A NEW ERA

©2024, Harry Gamboa Jr.

20 inches x 38 inches

B&W Photocopy on Bond



Portrait from DAWN/ECLIPSE OF A NEW ERA

©2024, Harry Gamboa Jr.

20 inches x 38 inches

B&W Photocopy on Bond



Portrait from DAWN/ECLIPSE OF A NEW ERA

©2024, Harry Gamboa Jr.

20 inches x 38 inches

B&W Photocopy on Bond



Portrait from DAWN/ECLIPSE OF A NEW ERA

©2024, Harry Gamboa Jr.

20 inches x 38 inches

B&W Photocopy on Bond



Portrait from DAWN/ECLIPSE OF A NEW ERA

©2024, Harry Gamboa Jr.

20 inches x 38 inches

B&W Photocopy on Bond



Portrait from DAWN/ECLIPSE OF A NEW ERA

©2024, Harry Gamboa Jr.

20 inches x 38 inches

B&W Photocopy on Bond



Portrait from DAWN/ECLIPSE OF A NEW ERA

©2024, Harry Gamboa Jr.

20 inches x 38 inches

B&W Photocopy on Bond



Portrait from DAWN/ECLIPSE OF A NEW ERA

©2024, Harry Gamboa Jr.

20 inches x 38 inches

B&W Photocopy on Bond



Portrait from DAWN/ECLIPSE OF A NEW ERA

©2024, Harry Gamboa Jr.

20 inches x 38 inches

B&W Photocopy on Bond



Portrait from DAWN/ECLIPSE OF A NEW ERA

©2024, Harry Gamboa Jr.

20 inches x 38 inches

B&W Photocopy on Bond



Portrait from DAWN/ECLIPSE OF A NEW ERA

©2024, Harry Gamboa Jr.

36 inches x 48 inches

B&W Photocopy on Bond



Portrait from DAWN/ECLIPSE OF A NEW ERA

©2024, Harry Gamboa Jr.

36 inches x 48 inches

B&W Photocopy on Bond



Portrait from DAWN/ECLIPSE OF A NEW ERA

©2024, Harry Gamboa Jr.

36 inches x 48 inches

B&W Photocopy on Bond



Portrait from DAWN/ECLIPSE OF A NEW ERA

©2024, Harry Gamboa Jr.

36 inches x 48 inches

B&W Photocopy on Bond



Portrait from DAWN/ECLIPSE OF A NEW ERA

©2024, Harry Gamboa Jr.

36 inches x 48 inches

B&W Photocopy on Bond

EXHIBITION LOCATIONS

First Floor Gallery

Santa Clarita City Hall
23920 Valencia Boulevard
Valencia, CA 91355
(661) 259-2489
www.santa-clarita.com/cityhall
@cityofsantaclarita

Canyon Country

Jo Anne Darcy Library

18601 Soledad Canyon Road
Canyon Country, CA 91351
(661) 259-0750
www.santaclaritalibrary.com
@scvpubliclibrary

Valencia Public Library

23743 W. Valencia Boulevard
Valencia, CA 91355
(661) 259-0750
www.santaclaritalibrary.com
@scvpubliclibrary

Valencia Public Library - Childrens' Area

23743 W. Valencia Boulevard
Valencia, CA 91355
(661) 259-0750
www.santaclaritalibrary.com
@scvpubliclibrary

Newhall Community Center

22421 Market Street
Newhall, CA 91321
(661) 286-4006
www.santa-clarita.com/ncc
@cityofsantaclarita

Old Town Newhall Library

24500 Main Street
Newhall, CA 91321
(661) 259-0750
www.santaclaritalibrary.com
@scvpubliclibrary

Canyon Country Community Center

18410 Sierra Highway
Canyon Country, CA 91351
(661) 290-2266
www.santa-clarita.com/cccc
@cityofsantaclarita

The MAIN

24266 Main Street
Newhall, CA 91321
(661) 290-2255
www.atthemain.org
@themainnewhall

