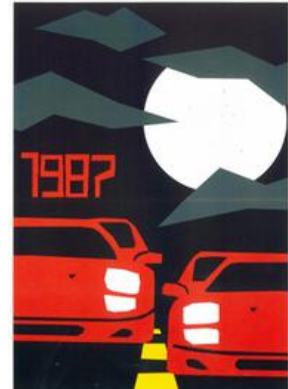
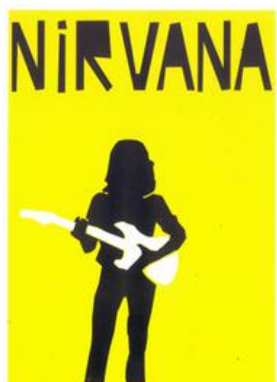
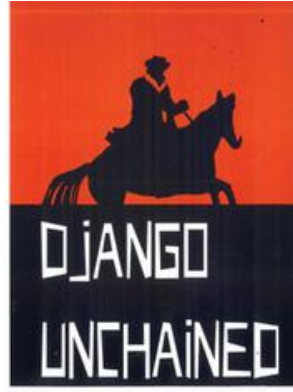


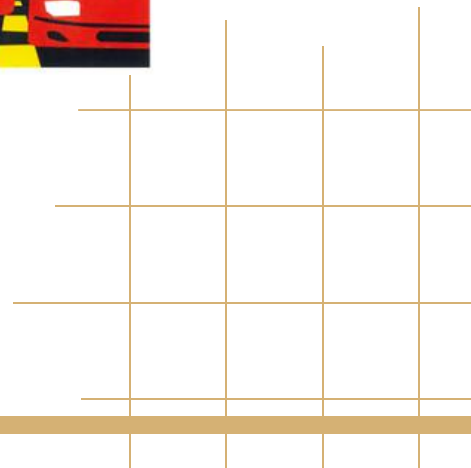


# CLEEVE CALLING

SUMMER 2024



Roan E, Harvey S, Aleks G, Dylan M, Maddie B,  
Sophia T, Maya C, Fed C, Tyler B





# CONTENTS

---

EXECUTIVE HEAD'S LETTER

---

SUMMER TERM HIGHLIGHTS

---

ENRICHMENT WEEK

---

SPORTS HIGHLIGHTS

---

ART SHOWCASE

---

TERM TALK

---

MANDARIN EXCELLENCE PROGRAMME

---

BATTLEFIELDS TRIP

---

OPEN EVENING

---

CLEEVE TRAINING HUB

---

SUMMER ACTIVITIES

---

DIARY DATES AUTUMN 2024

---



# PARENTS & GUARDIANS

Dear Parents/Guardians

As another academic year comes to an end and we enjoy our end of term EnREACHment Week, I wish all families our very best wishes for the Summer break and thank you for your on-going partnership. We continue to develop as a school as a result of our collaboration with a range of partners and stakeholders, and none is more important than our work with parents/guardians.

During the Spring Term we circulated a survey to all parents/guardians, the aim of which was to gather your views on a range of topics relating to our school. We were delighted to receive over 500 responses from parents of students across all Year Groups. I am grateful to those who took the time to respond and share their thoughts: it really does help to gain your perspective and voice, whilst also keeping aligned to our published '2030 Vision'.

Within the survey, you gave us feedback on a range of key topics, including: Teaching and Learning, Behaviour and Rewards, Student Wellbeing, Communication and Extra-Curricular Provision.

## Key themes from the survey

You strongly agreed that Cleeve School has strong ambitions for you children; that students are making good progress with their learning and with reading, in particular. A high proportion of parents also said that they would recommend Cleeve to other families, which is contributing to the large numbers of students joining Cleeve.

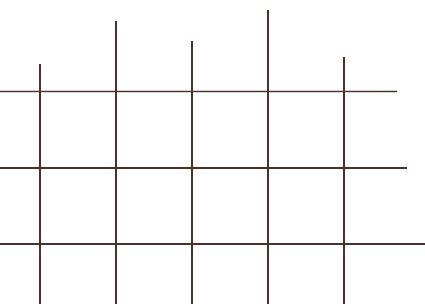


Overall parents strongly agreed that children are taught well, enjoy attending school and feel safe doing so. We heard that the information you receive from Cleeve about your child's progress is valuable and informative, and that communication overall has developed and is effective.

You agreed that the enrichment and extra-curricular opportunities for students are good, including with our sport and performing arts. You also fed back your strong support for acquiring an all-weather surface, to match our exceptionally strong sporting reputation. I agree!

## Areas for further development from the survey

Like any school and, indeed, any organisation, there are areas where we can do even better and we were pleased to receive such supportive and productive feedback on further developments that could improve your child's school experience here at Cleeve. Whilst our '2030' strategy is strong in its vision, there are also key operational matters that need further refinement.



# PARENTS & GUARDIANS

Parents asked for more information about the 'Standards Card' system and how it is used across the school to support students to thrive. You also asked us to consider how we ensure that the system is applied fairly for all students. We have put together two short web guides on this topic. You can find out more about how we support exemplary behaviour [here](#) and further details on our STRIVE approach [here](#).

You also asked us to explore how we can further develop our successful 'Cosmos and Scholars' programmes to provide even more stretch, challenge and opportunity for 'gifted and talented' students, across a range of subject areas, which will enable more students to be recognised for their subject-specific talents, not just a set group in each Year Group. This important programme will be re-launched in September and we will up-date parents at the start of the new academic year about its next stage of evolution.

We very much appreciate the high volume of parents who contributed to the survey, which has provided some excellent areas for Cleeve to continue to review and develop. We are doing much more to improve than I can cover here and I encourage you to read the letter I have written (sent by email and available on the website [here](#)) which gives more detailed information on the different areas the survey covered.

We will look to return to parents in the Autumn with a follow up survey and further updates about how key projects are being taken forward. On a personal level, I enjoy meeting parents at any point, be it at school or in the community, and I can assure you that your voice and feedback always matters.

## Results Days

Please note that our all-important examination results days are as follows:

- Post-16/ A Level: Thu 15th August
- GCSE: Thu 22nd August

## Curriculum Information Evenings

At the start of September, the Curriculum Information evenings will be running at the following times, and we welcome all parents:

- Year 7: Wed 4th September, 6pm
- Year 8: Wed 11th September, 6pm
- Year 9: Wed 11th September, 7pm
- Year 10: Thu 12th September, 6pm
- Year 11: Mon 9th September, 6pm
- Year 12: Thu 5th September, 6pm
- Year 13: Thu 5th September, 7pm

Finally, all of our very best wishes for the Summer break. Amongst everything that you have planned, please make sure that your children do find time to pick up a book and to read as much as possible over the next six weeks. I promise you, it is 'game-changing' and also a perfect way of relaxing.

Alwyn Richards  
Executive Head

# SUMMER TERM HIGHLIGHTS



- COSMOS FESTIVAL
- THRIVING MINDS CONFERENCE
- CHELTENHAM EDUCATION PARTNERSHIP CHANGEMAKERS EVENT
- BRITISH GLIDING ASSOCIATION VISIT
- ACTION FOR CONSERVATION WILD-ED PROJECT
- BATTLEFIELDS TRIP
- CEP MARS ROVER PROJECT
- Y12 TORTILLA MAKING COMPETITION
- EXPLORER DOME
- JAZZ FESTIVAL



# ENREACHMENT WEEK



- PGL AT OSMINGTON BAY
- ICELAND TOUR
- WORK EXPERIENCE
- DUDLEY ZOO
- LONDON GLOBE THEATRE
- WORCESTER CATHEDRAL
- INTERNATIONAL DAY
- CIRCENCESTER WATER PARK
- ENTERPRISE DAY
- FOREST ADVENTURE
- BLACK COUNTRY MUSEUM
- DUKE OF EDINBURGH EXPEDITION
- STEM DAY
- MUSIC DAY



# SPORTS HIGHLIGHTS



## Yr 9 Boys Cricket

Two hard fought games with narrow losses to Bournside by 3 wickets and Pates by 6 wickets. Some excellent bowling and fielding performances and excellent team spirit and leadership from captain Jack B. In the final game we beat Leckhampton High School by 33 runs.



## Year 9 Boys National Cup

The Year 9 boys reached the final of the ESFA National Cup for the first time at the Hawthorns Stadium. Despite being 2-0 down to a very strong Thomas Telford team, halftime changes allowed us to stage a dramatic comeback. Goals from Jayden Joynes and Lennon Walker brought us level, eventually taking the game to penalties. Though we lost in the shootout, the day will live long in Cleeve School's sporting history.



## Year 8 and 9 Girls Football County Winners

The Year 8 and 9 girls' team reached the final of the County competition (including Bristol and South Gloucestershire) for the second consecutive year. They faced a very strong St. Peters team, consisting of Forest Green and county-level players. With a huge team effort, they secured a narrow 1-0 victory, with Molly H calmly slotting in the winning goal. Cleeve became only the second winners of the GSFA U14 Girls County competition.

## U13 Girls Cricket

We had our first U13 girls cricket game against Chipping Campden School. A fantastic achievement from Cleeve students who, for some, this was their first ever game! Brilliant team work and encouragement from players including Megal A, Georgia W, Victoria J, and some brilliant hitting from Isabelle F!

# SPORTS HIGHLIGHTS



## Sports Day

Students had a fun-filled Sports Day, competing and cheering on the activities whilst enjoying the college rivalries, the music and the burgers! The weather stayed dry, the mascots entertained the crowds, facepaint and glitter were abundant, and another fantastic set of results were delivered. Shackleton College were crowned as champions once again!

Our 'Champions Challenge' also took place simultaneously, slightly removed from the liveliness, which was inspiring in its inclusion and engagement. Congratulations to the winners and very well done to all our competitors. A special mention also to our Year 12's who raised almost £300 on their refreshment stalls.

## Swimming

The boys' swimming team won the Boys' Overall Cheltenham and District Trophy for the first time in the school's history. The gala dates back to the early 1970s, making this a truly historic event for the school.

The Y10 boys cricket team won the district final at Cheltenham Cricket Club. After restricting Pates Grammar School to 144 runs with a good all-round display in the field, the team chased down the target with 2 and a half overs to spare.

The boys were a credit in terms of both performance and their attitude and grace in victory.



Cleeve School has been awarded GOLD in the School Games Mark!



Facilitated by the Youth Sport Trust, this award shows commitment to the development of competition across the school and into the community, with the highest quality PE curriculum and extra-curricular opportunities across the whole school and to the wider community.

# SPORTS HIGHLIGHTS

## Y9 Athletics

We had a fantastic competition with a number of Year 9 students selected to represent Cleeve School in the Year 9 Championships at the Prince of Wales. Overall the Year 9 girls finished 5th place and the boys finished 3rd. There were some superb individual performances:



Caleb G

Celeb G	1 <sup>st</sup> place - new district record of 1.76m 1 <sup>st</sup> place - 2.08.9 mins 1 <sup>st</sup> place - new meeting record 11.8 seconds	High Jump 800m 80m hurdles
Kia B	1 <sup>st</sup> place 39.20m	Javelin
Sam J	2 <sup>nd</sup> place 11.26m	Shot putt
Charlie P	3 <sup>rd</sup> place 24.27m	discus
Jayden J	4 <sup>th</sup> place 4.91m 4 <sup>th</sup> place 12.4 seconds	Long Jump 100m
Hugo R-G	6 <sup>th</sup> place 5min 13 seconds	1500m



Kai B

Tilly R	5 <sup>th</sup> place 1.30m	High Jump
Nagyda O	3 <sup>rd</sup> place 16.12m 2 <sup>nd</sup> place 4.49m 6 <sup>th</sup> place 14.0 seconds	Discus Long Jump 100m
Molly H	4 <sup>th</sup> place 17.68m 6 <sup>th</sup> place 5min 58.7 seconds	Javelin 1500m A final
Neeve M	5 <sup>th</sup> place 4.32m	Long Jump
Evie V	5 <sup>th</sup> place 30.4seconds	200m
Chloe W	5 <sup>th</sup> place 3m 7.1 seconds	800m B final



Poppy G

Following the district trials, students were selected to represent Cheltenham District at the County Athletics trials in June. Students who excelled were then selected to take part in the regional competition in Exeter. Well done to our athletes who have worked hard to be performing at this level, their diligence and consistency is shining through!



Zoe A



Zephie T



Skyla T



Alicia T



Bexley T



Aiden B

# ART SHOWCASE

## YEAR 10 MOCK EXAM PIECES



Florence B, Nola H,  
Holly F, Olivia C,  
Kelsey C, Finley C



# ART SHOWCASE

## A LEVEL ART SHOW - JUNE

The A level Graphics and Fine Art students had their annual Art show in June to celebrate their work following the examiner's visit. Parents and pupils attended to see the wonderful showcase and high standards they have achieved in their coursework projects and exams.

Graphics students followed their own brief and themes, which included Eadie P's Reading Festival, Hermione H's rebranding of sweet and salty Popcorn and Harry G's Football rebranding.

In Fine Art, Celia B's canvases on 'Mundane' and Milly T's final piece expressing 'Endangered Wildlife' show exceptional skill and attention to detail. Well done to all students and good luck in your future pathways.



The front and back cover images on this issue of Cleeve Calling showcase Year 10 Graphic Design mock exam pieces.

Students were tasked with a brief to create a poster design for their own chosen theme and purpose which linked in style to the graphic designer Saul Bass. They firstly created a paper cut out illustration which was then scanned in and digitally drawn over in Adobe Illustrator. They then had to compose varied layouts combining their image and typography.

There was amazing focus and creativity from the Art Graphics students during the all day exam.

# TERM TALK

**What a phenomenal year it has been and one of the key themes that has emerged is Cleeve students as leaders.**

No more so is this seen than in the summer term with different year groups acting as guides and mentors for Y5s, Y6s and Y7s. The collaboration between Y7 and 12 for the Summer Fair, Sixth Form students working as teaching assistants and mentors within classrooms and our anti-bullying ambassadors delivering assemblies to their peers.

It has also been brilliant to see Cleeve students as leaders within College events, with Sports Day a key highlight but also on the sports field. Having been lucky enough to watch the Y9 boys ESFA final on YouTube and Y10 boys winning their district cricket final at Pates, what struck me most was the leadership displayed. The same can be said within the Y8/9 girls' football team, the gardening club and in so many places and spaces around the school.

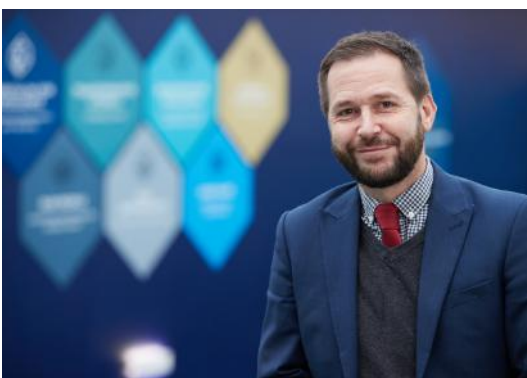


*Sports Day 2024*

Another highlight has been at PGL for Y7 and on the Water Sports Day this week with Y9, watching one student supporting another to get back on their paddle board to enjoy the rest of the session.

We are never more proud of our students than when they are positively impacting other lives as well as seizing the opportunities on offer to them.

**We wish all of our students, staff and families a fantastic summer!**



**Mr Slatter**  
**Head of School: KS4 & KS5**



**Mrs Gande**  
**Head of School: KS3**

# MANDARIN EXCELLENCE PROGRAMME

Year 10 students on the Mandarin Excellence Programme visited the University of Birmingham for an event which included a campus tour and talks on Chinese, higher education and life at university, including a year abroad. In the afternoon, students also saw a cultural display of Tai Chi and Kung Fu using traditional fans and swords.



As part of the day, students viewed and voted on the tourism project videos produced earlier this month as part of their intensive study days. Congratulations to Cleeve School's very own Shanghai Sharks team for winning (of 20 groups!) the award for Best Use of Chinese. Excellent work!

If your son / daughter is starting Cleeve School in September and would be interested in joining the Mandarin Excellence Programme, please email Mrs Nicholls, Director of Languages, to register their interest: [sen@cleeveschool.net](mailto:sen@cleeveschool.net)

# BATTLEFIELDS TRIP

Written by Mollie A and Emma B - Year 12

For four days in June, 48 of our year 12 and year 10 historians went to Belgium and France. This trip was to help the history students get a more developed understanding of World War 1 and the conditions that the millions of soldiers fought in, with an emphasis on medicine on the Western Front as this is part of the GCSE course.

First stop on the trip was Essex Farm cemetery where we visited the grave of a soldier, Valentine Strudwick, who was aged 15 when he was killed. This was a particularly emotional stop considering the age of our year 10s on the trip are the same age as Valentine. After this, we visited Lijssenthoek Military Cemetery where our brilliant guide, Nick, told us some stories of those who were buried there, one of those being Nellie Spindler, a staff nurse and one of two British female casualties of WW1 buried in Belgium.

The next day we travelled back to France to visit Thiepval Memorial, Lochnagar Crater and Newfoundland Park. Thiepval Memorial is a memorial to 72,000 missing British and South African servicemen who died in the Battle of the Somme; one of our own students had a relative on this memorial. Our guide researched some information on their relative; this provided a very emotion stop for us all. Lochnagar Crater was an underground explosive charge against the Germans and was exploded on the first day of the Somme, it is 30m deep and 100m wide. Newfoundland Park gave us the opportunity to see real trenches up close and we got the opportunity to walk through No Man's Land and saw how close together the British and German trenches really were.

On the Thursday we went to the beautiful city of Bruges where we saw the gorgeous scenery and fascinating history of the town through a canal trip! We were given a walking tour quiz to complete which took us to the main sites of the medieval city. The quiz inspired a lot of competitiveness between the teachers, Mrs Chatten and Mr Nicol. After the quiz we were given free rein to explore Bruges's delicious waffle shops, beautiful architecture and some of the famous Belgium chocolate shops. The gorgeous sites, such as the world-famous belfry of Bruges really tied the trip together to make a memorable and exciting experience.

One of the most memorable experiences was the Last Post at the Menin Gate in Ypres, which is a once in a lifetime experience. The Menin gate is a war memorial service that takes place in Ypres every evening in dedication to the commonwealth soldiers who were killed in the Ypres salient of World War I. We watched the people who had lost relatives lay wreaths to remember them; this included 3 students from our very own school, two of whom have relatives with names on the Menin Gate.

After 4 days, we returned to England with so much history knowledge and wonderful memories. A huge thanks to the staff for making it fun and looking after us all so well.



# OPEN EVENING 2024

**Wednesday 25th September, 6.00pm - 8.45pm**

This very popular event is a fabulous opportunity to see the school in action. Every subject will be there showcasing their specialty. You can meet the staff and find out all about life and learning at Cleeve School. The Open Evening is perfect for parents/guardians of children starting secondary school in 2025 or 2026. Our Sixth Form Centre will also be open for those looking at year 12 options.

Throughout the evening there will be introductory talks on various topics, staff will be on hand to answer all your questions and you can take a tour of the school's excellent facilities. Come along and join us for a great evening from 6pm. We look forward to seeing you there.

[CLICK TO BOOK](#)

Welcome to  
**CLEEVE SCHOOL**

**CLEEVE SCHOOL  
OPEN EVENING**  
Wednesday 25th September, 6pm

OPEN MORNINGS  
Monday 30th September, 9am  
Friday 4th October, 9am  
Tuesday 8th October, 9am

BOOK ONLINE at [www.cleeveschool.net](http://www.cleeveschool.net)  
Two Hedges Road, Bishop's Cleeve, Cheltenham, GL52 8AE

**ASPIRING | COLLABORATING | TRANSFORMING**

# TEACHING - A LEGACY OF LEARNING

## TRAIN WITH US AT CLEEVE SCHOOL

***"I completed my first PGCE placement with Cleeve School and I couldn't have been happier with the support I received.***

*From the first day, the Geography Department provided excellent support and training for me. They focussed on my areas of strengths and areas of development to ensure that I was always improving throughout the placement. The Department made me feel like a valued member of their team, respecting my views and providing me with the opportunity to contribute to the department too.*

*Alongside this, I received insightful lectures from different members of the school that allowed me to understand Cleeve School's vision and ethos. I was able to use this expert knowledge from staff to improve my pedagogy within the classroom.*

*I learnt so much from this school, not solely teaching & learning, but also how supportive schooling environments can be for pupils. I would highly recommend Cleeve school to anyone who wants to start a career in teaching."  
(Testimonial, June 2024)*

For more information, please visit our website:



You can apply for work experience with us via the DFE:



Or, you are very welcome to contact us directly, please email Rachael Slatter, Head of ITT/ECT – [rcs@cleeveschool.net](mailto:rcs@cleeveschool.net)

Cleeve Training Hub is a fantastic teacher training facility based at Cleeve School and Sixth Form Centre of Excellence. From September 2024, we are a Regional Training Hub for the University of Worcester and a Lead Partner for the University of Gloucestershire. Together we deliver our teacher training programme in a brand new, £1million purpose-built training facility. The centre acts as a learning hub for our trainees where they benefit from the wealth of knowledge, experience and the support of Cleeve School staff.



UNIVERSITY of  
WORCESTER



UNIVERSITY OF  
GLOUCESTERSHIRE

# SUMMER NOTICE



**CHELTENHAM ROCKS** JULY 2024

## SUMMER HOLIDAYS IN CHELTENHAM

**FIND SUMMER HOLIDAY FUN** ON CHELTENHAM ROCKS

Visit Cheltenham Rocks this summer for the ultimate what's on guide. Find summer events, places to visit, kids eat free, local parks, walks and so much more.

**CLICK HERE TO TAKE A LOOK**

**PLACES TO VISIT**

**PARKS AND WALKS**

**LOCAL EVENTS**

**FREE THINGS TO DO**

The graphic features a central smartphone displaying the Cheltenham Rocks app interface. Surrounding the phone are various icons and text elements. At the bottom, there are five large, rounded rectangular buttons in different colors (yellow, green, pink, blue, and red) that serve as navigation links. Each button is accompanied by a small mouse cursor icon. The background is white with a yellow header and footer. The overall design is clean and modern, with a focus on bright colors and clear typography.

[CLICK TO SEE MORE](#)

# HOLIDAY ACTIVITIES & FOOD PROGRAMME



Don't miss Gloucestershire County Council's programme of holiday activities taking place in your area. Click below for the full programme and watch the video above to find out more.

[Click HERE  
for info](#)



See what's happening in your area



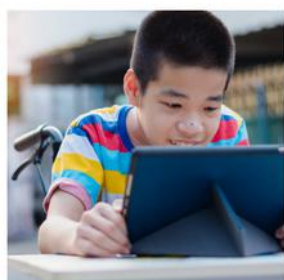
What is HAF and HAP?



Frequently Asked Questions (FAQs) for parents / carers



HAF video library of activities



Children and young people with SEND



HAF Community Connectors



CABS registration and information



Sign up to our HAF newsletter

# DIARY DATES

## AUTUMN 2024



22nd July - 30th August	Summer Holiday
15th August	A Level Results Day
22nd August	GCSE Results Day
2nd & 3rd September	INSET Days for staff only
4th September	Years 7 & 12 only in school
5th September	Years 7, 10, 12 & 13 in school
6th September	All year groups in school
25th September	Open Evening
25th October	INSET Day
28th October - 1st November	Half Term
20th December	Last day of term <i>School closes 12.30pm</i>
23rd December - 3rd January	Christmas Holiday
6th January 2024	First day of term



HOLLY B, YEAR 10

# HAPPY HOLIDAYS

[www.cleeveschool.net](http://www.cleeveschool.net)



@cleeveschool

---