



Base Direction Extrusion

Origin Plane

Base Direction Extrusion

Type Bur

Drill

Ball Bur

Bur Setting

Bur Up/Down (GIRDLE)

Ring size

Colour Swatch

Base Direction Extrusion

Colour Swatch

Base Direction Extrusion

Ring size

Offset distance

Curve
Distance
Plane
Corners

Geometry
Material

Plane Circle
Radius

Curve
Distance
Plane
Corners



GJJD3D™

Generative Jewelry and Fashion Design 3D

Powered by Rhinoceros & Grasshopper

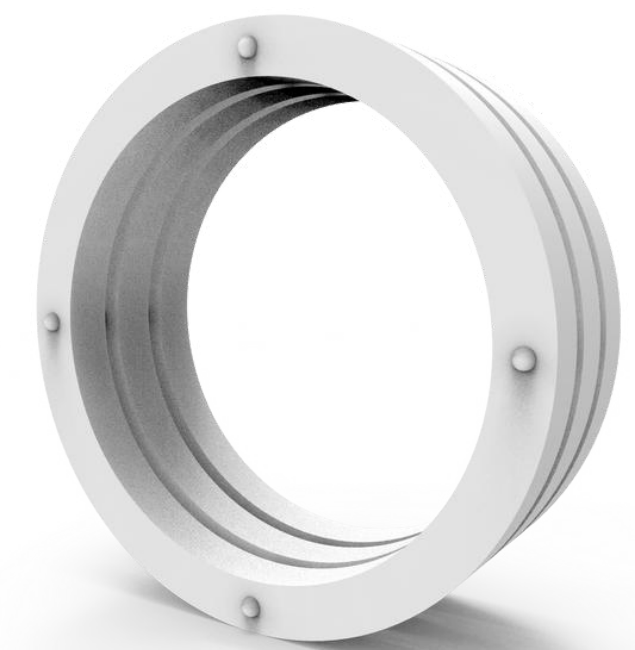
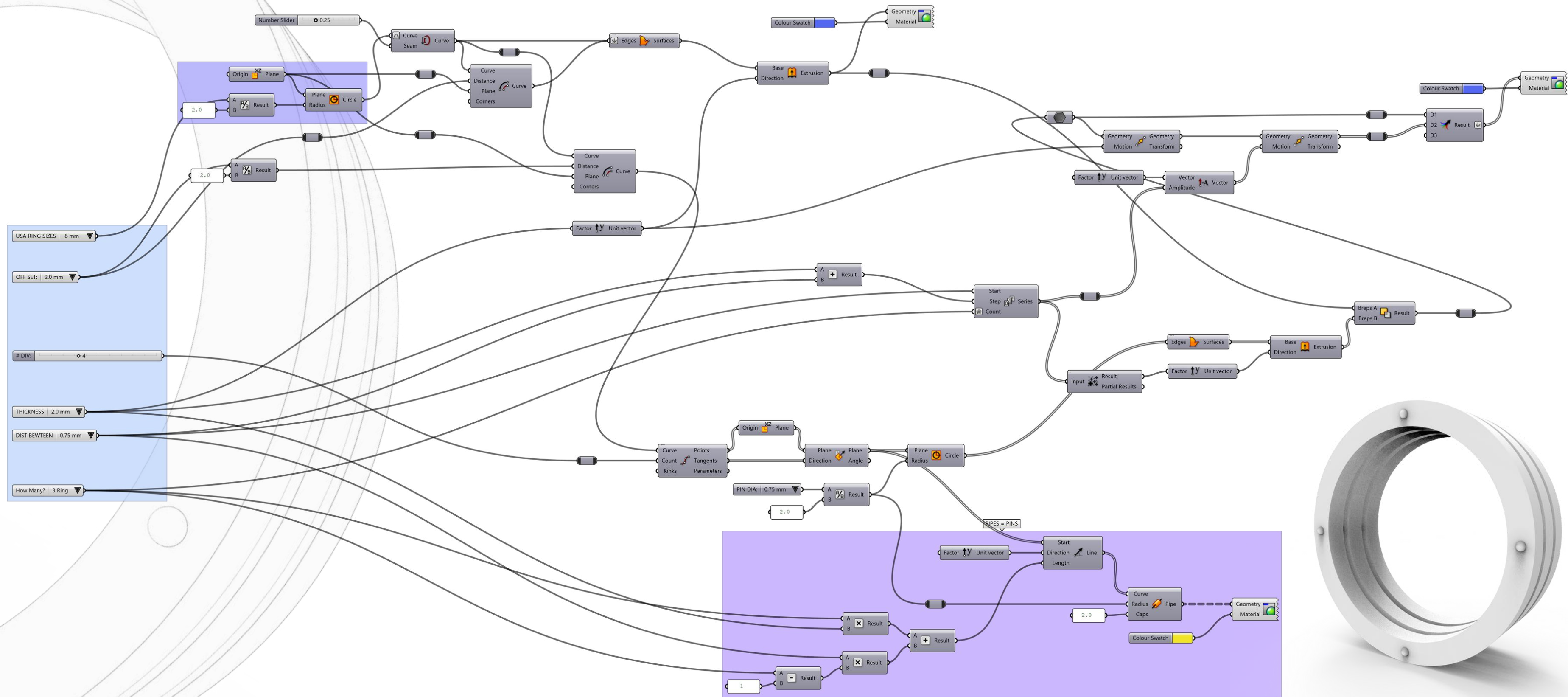
Generative Jewelry and Fashion Design with Rhino® and Grasshopper® is a new way to model jewelry where the designs are 'generated' using generative algorithms. A form is created by a series of mathematical operations, instead of being the outcome of applying a conventional command.

Grasshopper® allows designers to discover new forms from the simple to the awe-inspiring with no knowledge of programming or scripting.





Plates Ring Definition





Plates Ring Definition
Description Draft
Rendered for Presentation Brass and Silver Metal / Polish Finish



MODELING 3D JEWELRY

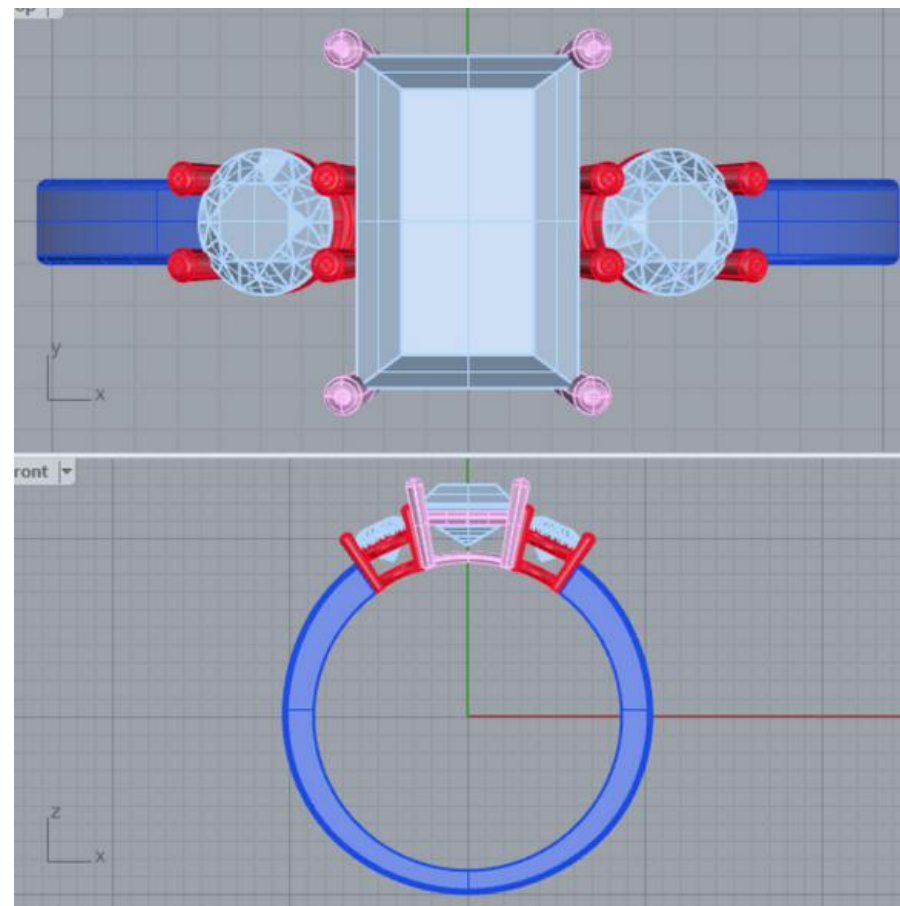
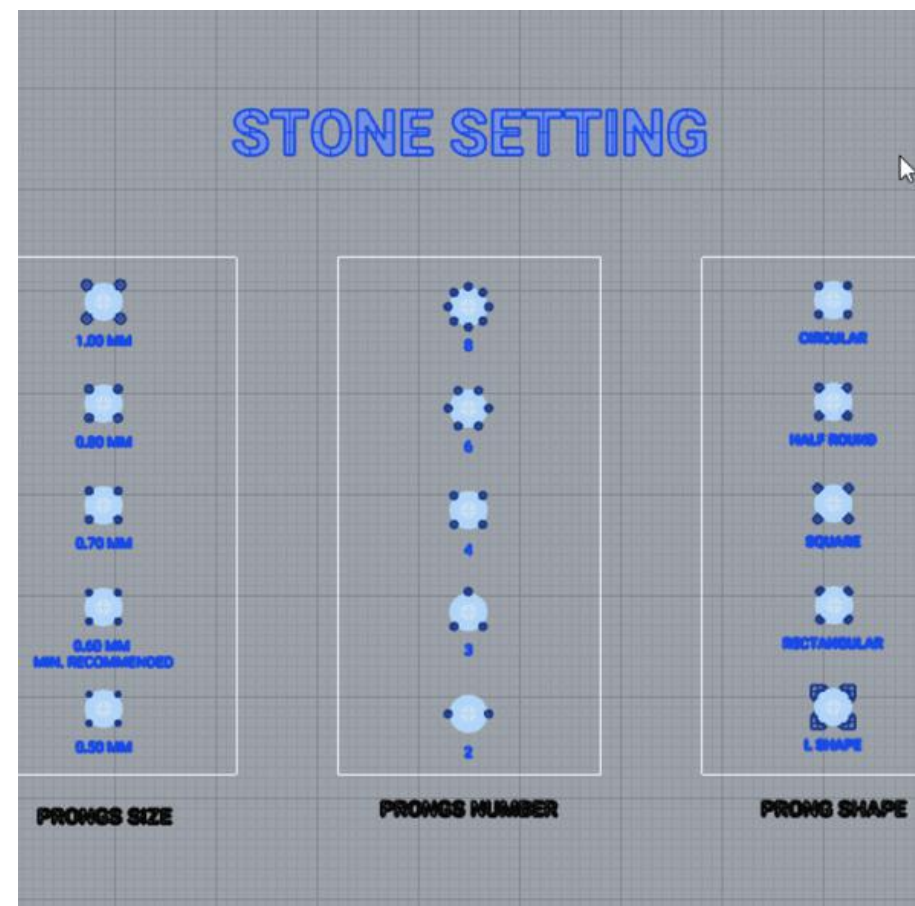
MEET
THE COURSE

From Design to Modeling, in this course we will talk about the importance of the design process in the jewelry industry by **learning basic hand and digital sketching tools**. You will learn about **jewelry theory and typology, ring anatomy, manufacturing process, parameters, and modeling step by step jewelry pieces**. Discover new ways to model and tools that will help you on the path of jewelry modeling.

Enjoy 20% off with this coupon code at checkout: **RHINO3DEDUCATION20**

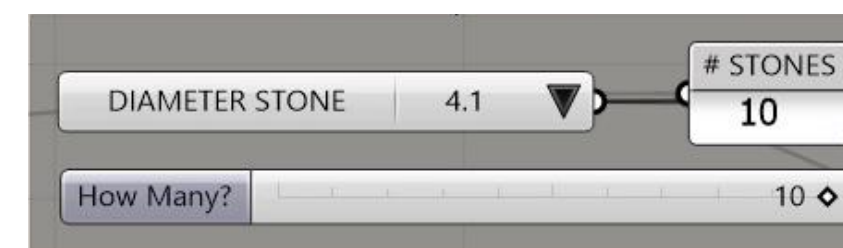
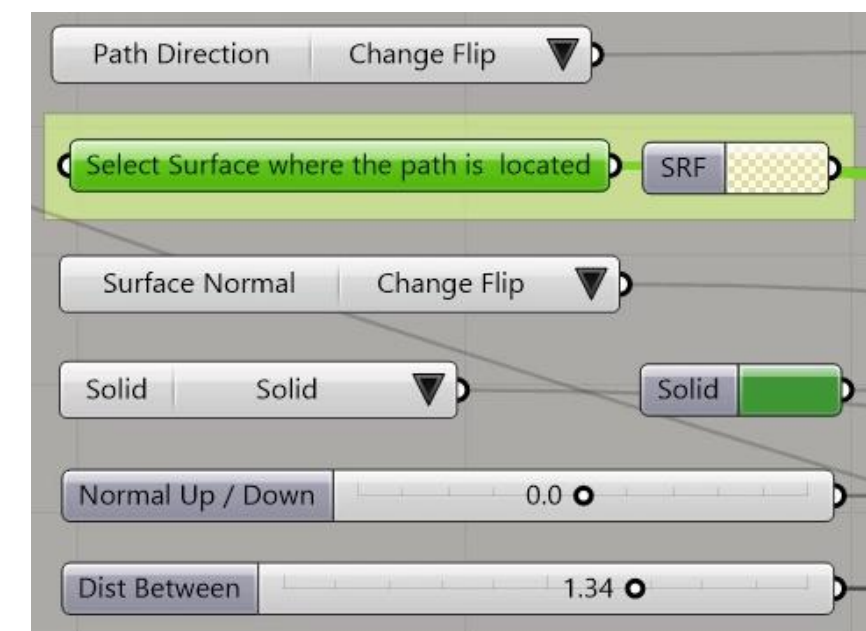
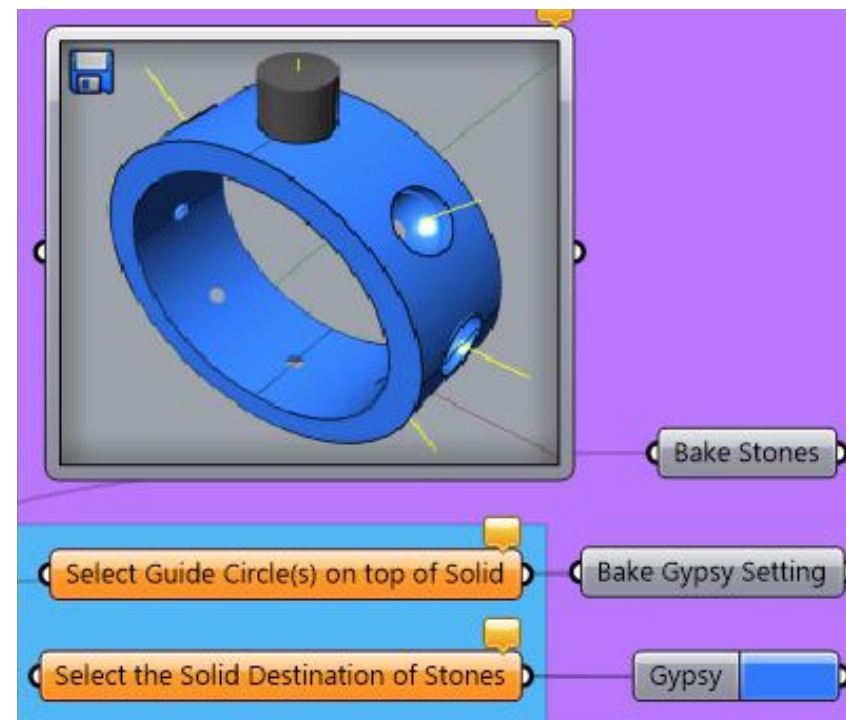
SPANISH

ENGLISH





Flush Gypsy Ring Definition





Flush Gypsy Ring
Parametric Jewelry with Grasshopper



MEET THE COURSES **RHINO3D.EDUCATION** HAS FOR YOU!



~~\$49~~ **Free**

Rhino 6 y 7 introduction

Rhino 6 and 7 Introduction

Learn Rhino 6 and 7 step by step



SubD in Rhino 7 [English]

Step by step Introduction to SubD in Rhino 7

Easy to follow step by step introduction to SubD modeling in Rhino 7



SAVANNA3D

SAVANNA3D for Rhino 7

A NURBS, SubD, and Parametric library of blocks for Rhino 7



Computational Design

Computational Design with Grasshopper for Rhino3D


Learn Grasshopper for Rhino 6 and 7 with a solid foundation



Introduction to Rhino 7 Rendering

Rendering with Rhino 7

Everything you need to know about rendering in Rhino 7



KeyShot for Rhino
Essentials for Designers and Creators

WIP

Essentials in KeyShot for Rhino 7

Bring your Rhino3D Models to reality applying materials from KeyShot