



Natureworks

WATER PLAY

info@natureworks.com.au

07 3289 7555

www.natureworks.com.au





SEA CREATURES & NAUTICAL THEMING

MARINE MAMMALS

HUMPBACK WHALE - HALF



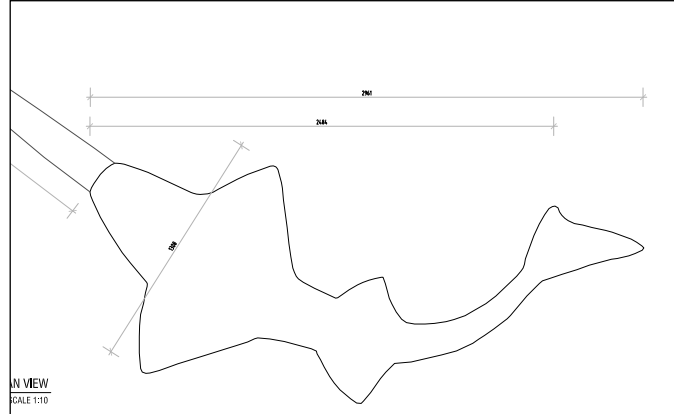
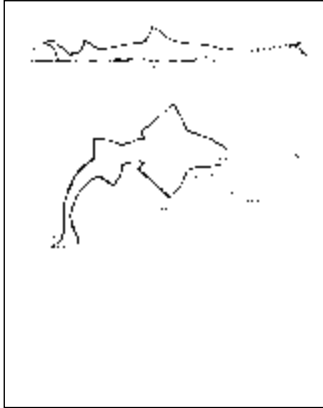


SEA CREATURES & NAUTICAL THEMING

MARINE FISH

SAW FISH

1. CONCEPT OUTLINE



3. IN PRODUCTION



4. COMPLETED



Front View showing stainless steel saw



Front View with water



Front View with water - spraying under pressure

The sawfish as cast in pre-pigmented coloured gel-coat over a very heavy duty iso-thallic fibreglass laminate. It will nest into a bed of sand which is flat/level. This will incorporate fixing lugs.

The bill was fabricated in very heavy-duty stainless steel with fountain outlets spraying out and upwards

The stainless bill armature extends 1 metre into the

body of the sawfish forming a pressurised reservoir with 32mm NB water outlet to which the site installer will connect a flexible hose. Again, the sawfish was bedded on a protective sand base for its entire perimeter with the bill supported in a similar manner with an underlying stainless vertical beam housed within the sand/resin base.



SEA CREATURES & NAUTICAL THEMING

3 METRE GIANT CRAB - CARDWELL

MARINE INVERTEBRATES - CRABS



100012
Crab 3ft
L 86 x W 63 x H 21cm - 10kg



CRABS



100013
Crab 6ft
L 189 x W 131 x H 39cm - 40.4kg



6FT CRAB - BROADWATER PARKLANDS



SEA CREATURES & NAUTICAL THEMING

GIANT STARFISH - 2M



STARFISH - WALL PLAQUE

This Giant starfish has been custom decorated in mosaic tiles for Yappoon foreshore





SEA CREATURES & NAUTICAL THEMING

LOGGERHEAD TURTLE

090048
Turtle - Loggerhead
L 121 x W 93 x H 34cm - 12kg



Museum quality fibreglass sculptures

Ideal sprayground
piece
Available in any size





SEA CREATURES & NAUTICAL THEMING

LOGGERHEAD TURTLE ON
BASE PLATE

BASE PLATE WITH
SAND DETAIL

SUITABLE FOR PLAYGROUNDS AND
SPLASH PADS



Mounting Holes
To be filled when installed)



SEA CREATURES & NAUTICAL THEMING

LEATHERBACK TURTLE



Also available in natural Finish



Bronze finish - Gloss



LEATHERBACK TURTLE
ON ROCK BASE



2000MM



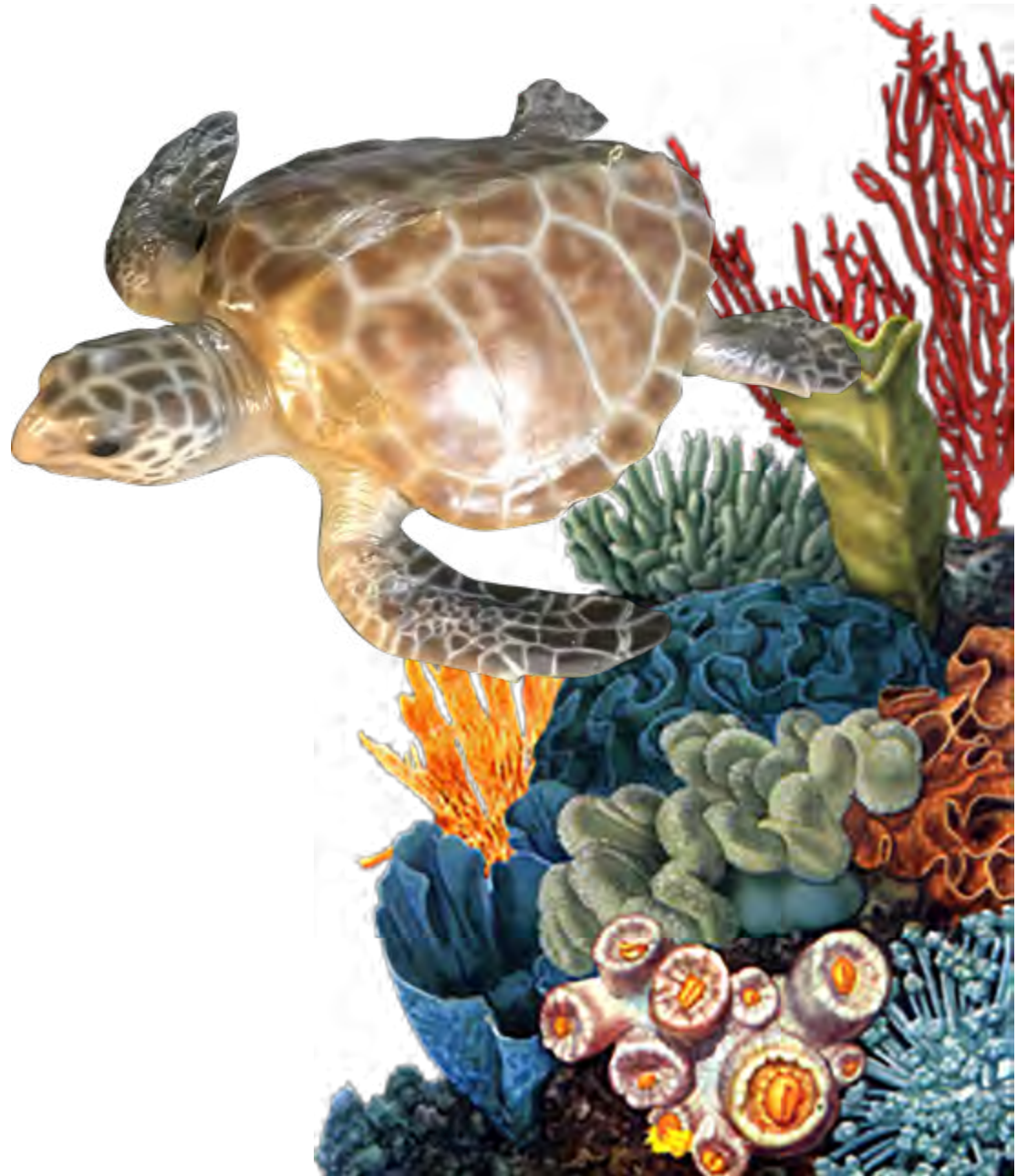


SEA CREATURES & NAUTICAL THEMING

HAWKSBILL TURTLE



Underside View





SEA CREATURES & NAUTICAL THEMING

GREEN TURTLES

GREEN TURTLES - LARGE

L 113 x W 96 H 320cm - 25kg



UNDERSIDE VIEW

GREEN TURTLES - SMALL



GREEN TURTLES - JUVENILE

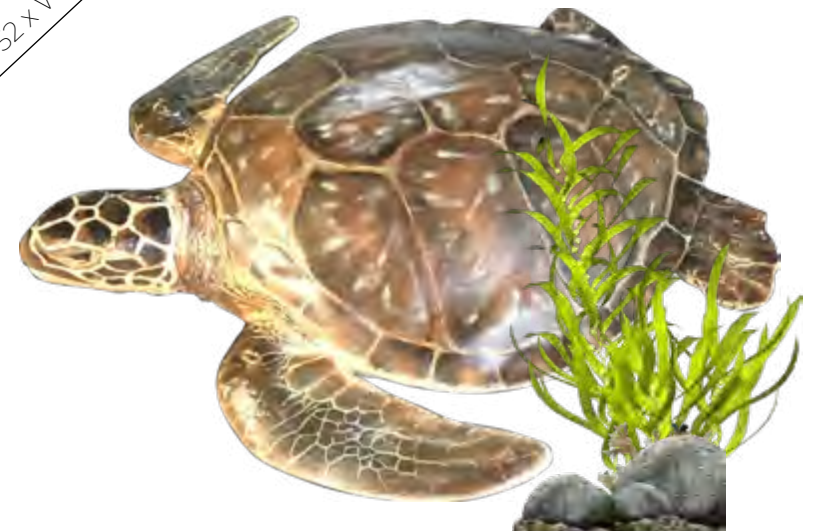


L 15cm x W 14cm x H 3cm - 1kg



Front View

L 52 x W 50 H 130cm - 3.5kg



NW00GTJ
Green Turtle - Juvenile
L 15 x W 14 x H 3cm - 1kg



SEA CREATURES & NAUTICAL THEMING

GREEN TURTLES

GREEN TURTLES - LARGE
- ON BASE PLATE

Side View



Mounting Holes
To be filled when installed)

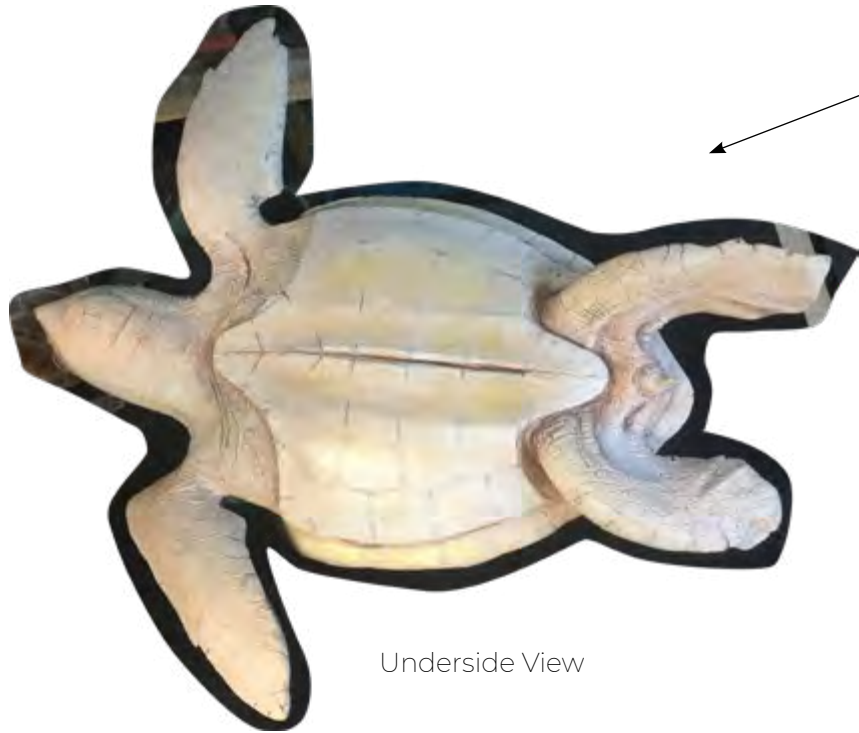
Top View





SEA CREATURES & NAUTICAL THEMING

OLIVE RIDLEY TURTLE



Underside View





SEA CREATURES & NAUTICAL THEMING

FLATBACK TURTLE



Underneath View



Top View





SEA CREATURES & NAUTICAL THEMING

GALÁPAGOS TORTOISE



This tortoise is a regular stock item and is also available as a heavy duty version. It is an ideal sculpture for day care centres as it is low to the ground and naturally sturdy.

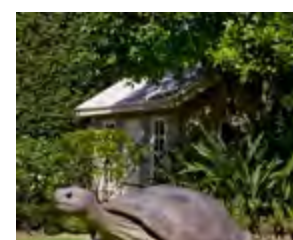
080124-HD
Tortoise - Galápagos
- Heavy Duty Version
Bronze and Aluminium
L 154 x W 93 x H 70cm - 45kg

Very Sturdy and Seriously Cute

CLIMB & PLAY



080124
Tortoise - Galápagos
L 154 x W 93 x H 70cm - 24kg



Also Available
Tortoise Galápagos
HEAVY DUTY VERSION

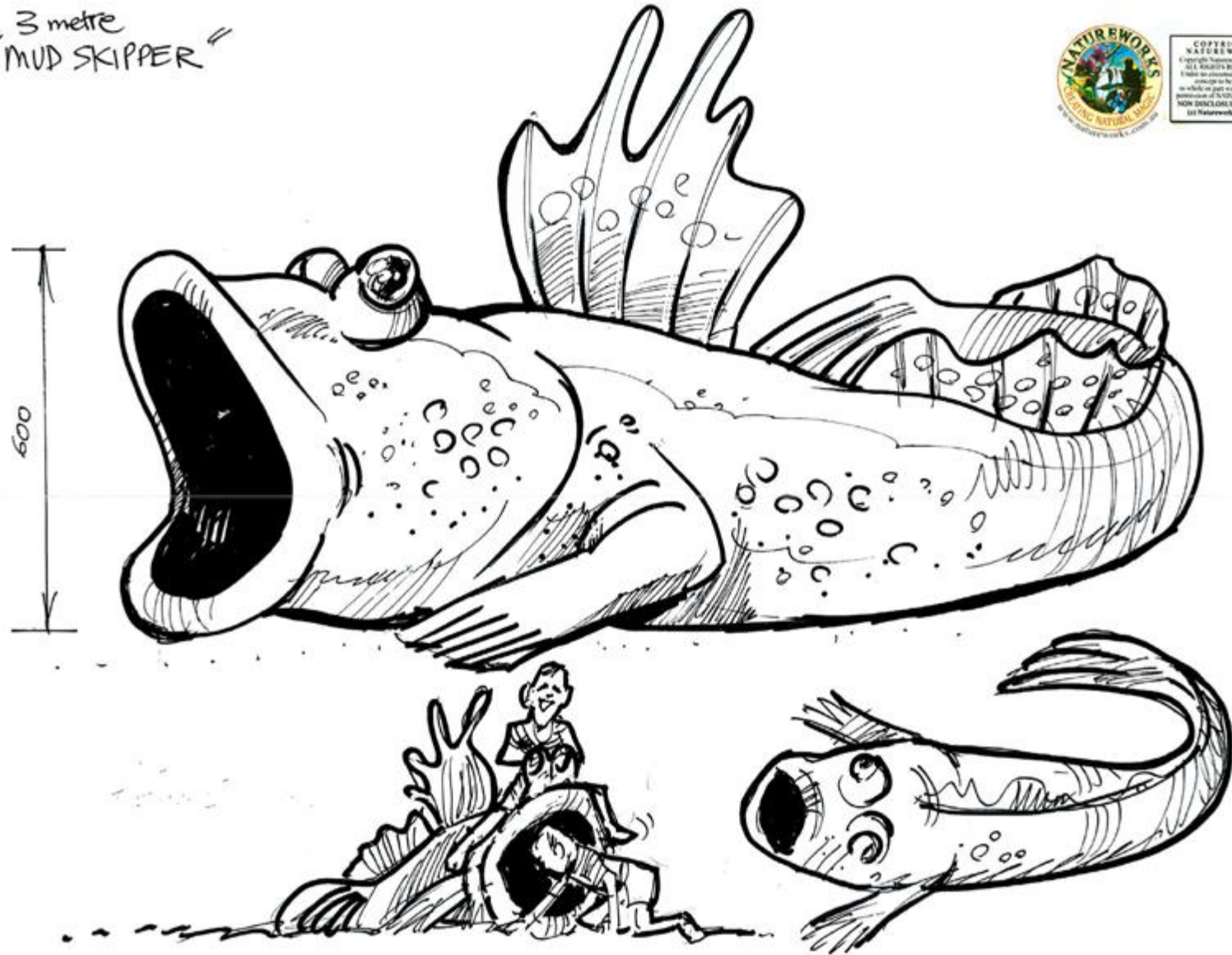


SEA CREATURES & NAUTICAL THEMING

MUD SKIPPER - GIANT 3M
LONG AND MOUTH OPEN-
ING 600MM HIGH

"3 metre
MUD SKIPPER"

This piece is to be
created in concrete for
either a mosaic finish
or a brightly coloured
paint finish. The mouth
is just big enough to
allow a child to crawl
in to a depth of 60 cm.

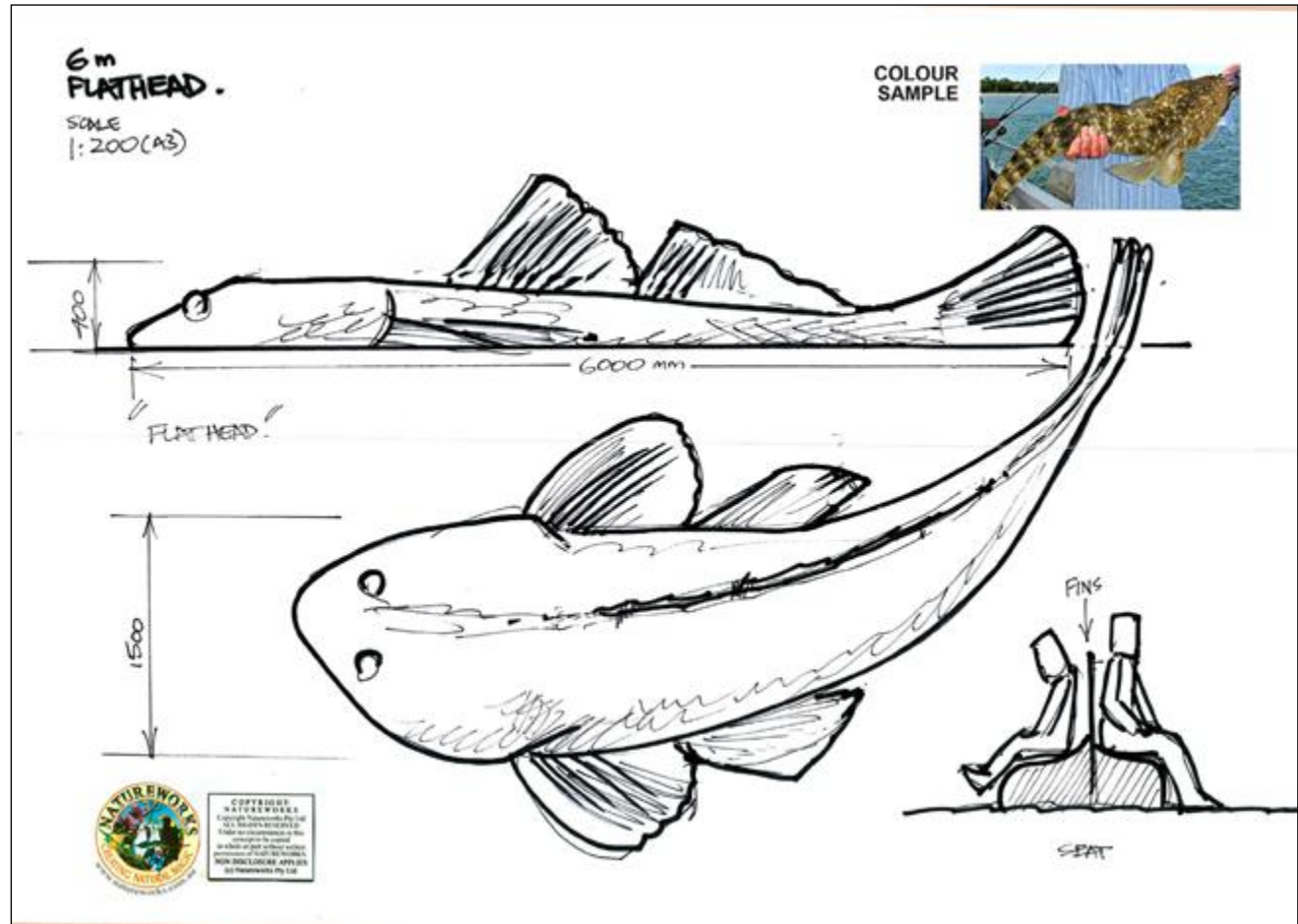


**COPYRIGHT
NATUREWORKS**
Copyright Natureworks Pty Ltd
All Rights Reserved
Written for reproduction in this
document for copyright
in which no part without written
permission of NATUREWORKS
NON DISCLOSURE APPLIES
to Natureworks Pty Ltd



SEA CREATURES & NAUTICAL THEMING

FLAT HEAD - GIANT 6M
LONG HIGH



This Flathead at 6.0 metres long is still only less than 60 cm to the top of its back, so it can be climbed on as playground seat without soft fall.

Every kids dream is to catch a giant Flathead. This piece is best coloured as a natural fish, or it can be crazy coloured or covered with mosaics



SEA CREATURES & NAUTICAL THEMING

WATER BIRDS

Certified to
Australian Standards

PELICAN SLIDE

CLIMB & PLAY



120012
Pelican Slide
L 307 x W 177 x H 153cm - 151kg



This Pelican Slide meets Australian standards and is certified for use in playgrounds/child care facilities



SEA CREATURES & NAUTICAL THEMING

COW TAILED STINGRAY



MOSAIC STINGRAY FOR
YEPPON FORESHORE
SPRAYGROUND



SEA CREATURES & NAUTICAL THEMING

SEA SLUG OR NUDIBRANCH
CUSTOM MADE



SEA SLUG



COPYRIGHT
NATUREWORKS
Copyright Natureworks Pty Ltd
ALL RIGHTS RESERVED
Under no circumstances is this
concept to be copied
in whole or part without written
permission of NATUREWORKS.
NON DISCLOSURE APPLIES
© Natureworks Pty Ltd



"NUDIBRANCH"
(SEA SLUGS)



Nudibranchs are found all over the world, but they're most prolific in warm, shallow sea water. Their coloration varies widely, from the muted colours of some easy-to-overlook types to the neon, clown-like appearance of others. Likewise, their physical forms are extremely varied. One consistent characteristic is the "tentacles" on the heads which allow Nudibranchs to feel, smell and taste.



SEA CREATURES & NAUTICAL THEMING

MARINE INVERTEBRATES

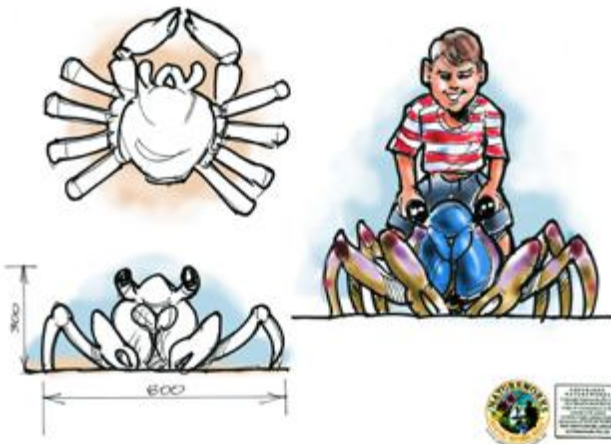
SOLDIER CRAB - 2M HIGH



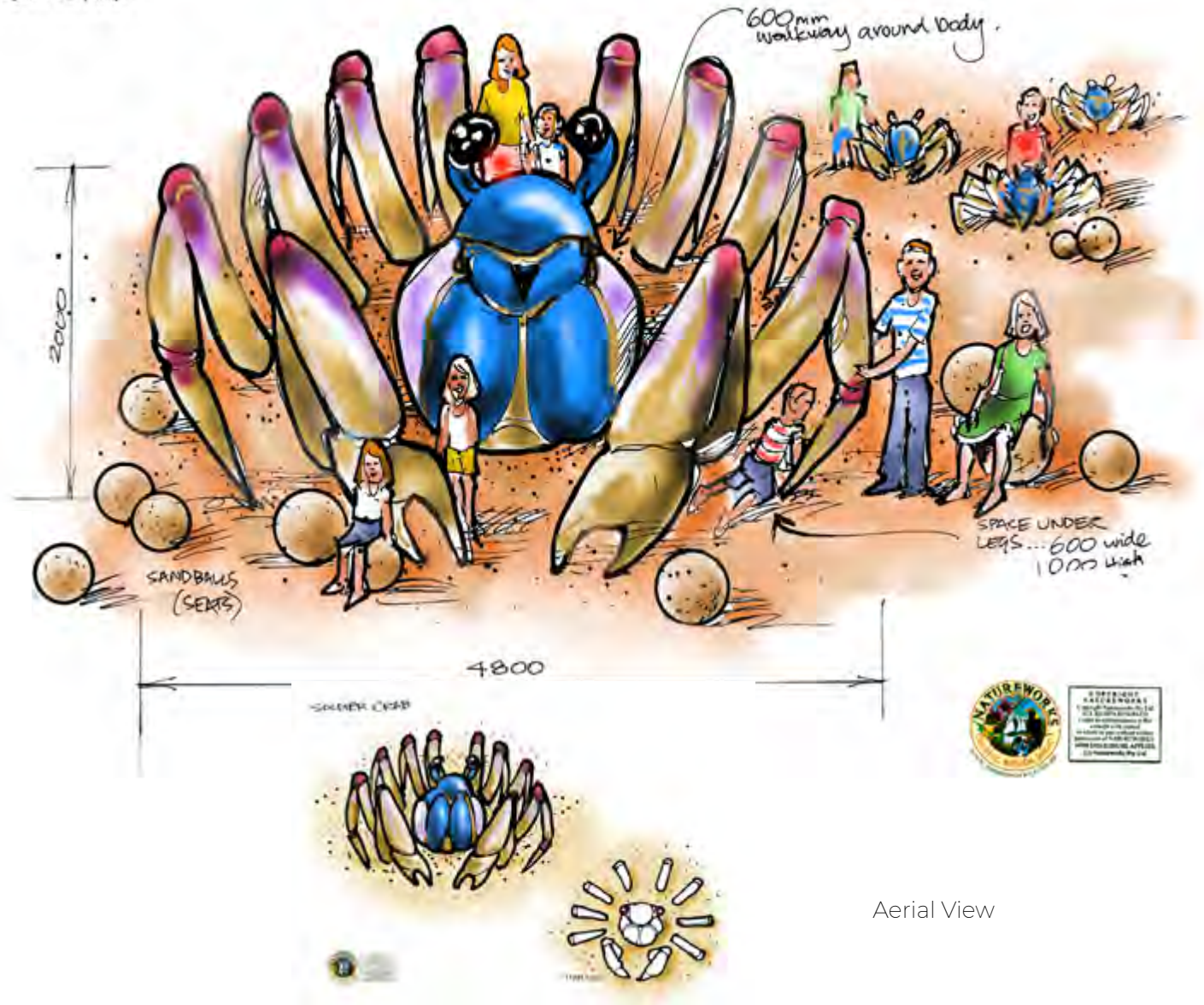
MARINE INVERTEBRATES

SOLDIER CRAB - 1M HIGH

SMALL SOLDIER CRAB!



2mtr High
"SOLDIER CRAB"



Aerial View



SEA CREATURES & NAUTICAL THEMING

YAPPOON FORESHORE
SPRAYGROUND





SEA CREATURES & NAUTICAL THEMING



The installation of unique sea creatures in abstract sculptural forms makes this seaside playground in Yeppoon a 'kraken' good time.

In 2015, Yeppoon City Council commissioned Natureworks to sculpt a series of sea creatures incorporating interactive water play, for the central art feature of a new 'sprayground' to be constructed on the Yeppoon foreshore.

Working closely with landscape architectural firm, Natureworks developed an abstract interpretation of Kraken tentacles (giant octopus), a stingray, a starfish, turtles and a giant crab for the new wet playspace. Utilising a range of surface finishes, Natureworks created larger-than-life artforms with precise mosaic patterns and a unique 3D bronze appliqué that hugs the

free-flowing sculptural forms. The 3D micro-bronze patterned inlay utilised tells the story of the sea creatures fringing the coral reef off Yeppoon - the mid-QLD coastline devastated by Cyclone Marcia in February 2015.

The challenge of the Yeppoon project was to produce large wet-play sculptural icons of local significance that would meet Australian Playground Standards. The brief called for a concrete substrate with no soft fall, requiring the tall sculptures to be designed as unclimbable, but still inspirational and with great visual impact.

Natureworks is renowned for its exacting replication, to museum standard, of all forms of animal art; however for the Yeppoon project Natureworks branched out beyond its traditional realm of realism and ventured into the world of abstract

contemporary art.

Each sculpture created for the sprayground was designed with a 75-year life span. They incorporate stainless steel armatures, reinforcing heavy-duty polymer-modified 75mpa concrete, to withstand strong weather conditions. The solid forms were then overlaid with a bronze Sea life appliqué and colourful mosaics to provide a spectacular surface finish. The hero piece of the Yeppoon series is the 'Keppel Kraken'. At a height of 4m, this central sculpture towers over the other elements, periodically dumping an avalanche of water over the unsuspecting children below. An additional series of intermittent spray and jumping jets of water add more surprises and a ton of fun to this magical sea-creature inspired sprayground.





SEA CREATURES & NAUTICAL THEMING

BROADWATER PARK
LANDS - "ROCKPOOLS"
- GOLD COAST QLD

Spraygrounds

Natureworks recently installed a series of vibrant "local" sea creatures water play features that dot the landscape of the shallow rapid rock pools at Broadwater Parklands. Collectively they provide a functional and sturdy attraction for tourist and local residences.

The oversized mud crab stands centre stage for older aged children to climb upon and play with the streaming water-jets spraying upwards to the sky. The high detailed paint finish of the loggerhead turtle is a popular sit

upon feature with a 6 metre spray jet extending from its mouth. The cute finely dressed fur seal pup whose whiskers have become whisker-jets is popular with the timid participants and adds a touch of fun and warmth to the site. The elegantly painted low lying eagle ray showcases its detailed and unique skin pattern and is large enough to seat child and carer.

The brightly coloured octopus is layed low and reveals its true to live underside suction cups, adding texture and depth to this fine detail

sculpture. The large nature flecked flathead can be found nestled in the shade near the edge of the pool.

Natureworks has developed a large "Library" of these highly detailed animal replicas which have been specifically "tooled up" so as to meet the Australian Playground Standards. The pieces have been anti-slipped and integrally coloured in polyester gel-coats, so as to ensure longevity of the finishes

Rockpools
Broadwater Parklands



