



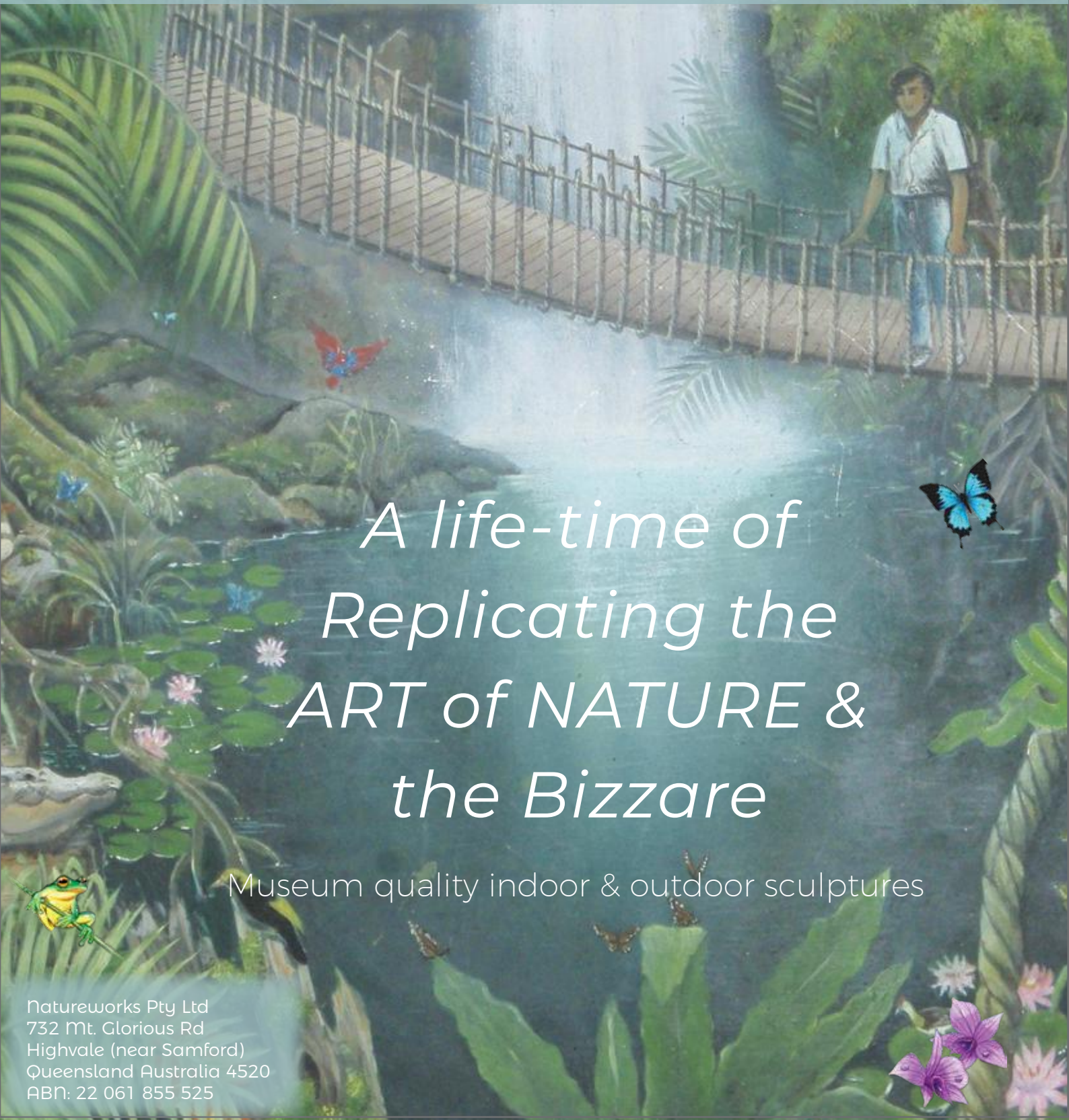
NATUREWORKS

40 YEAR HISTORY

info@natureworks.com.au

www.natureworks.com.au

07 3289 7555



*A life-time of
Replicating the
ART of NATURE &
the Bizzare*

Museum quality indoor & outdoor sculptures

Natureworks Pty Ltd
732 Mt. Glorious Rd
Highvale (near Samford)
Queensland Australia 4520
ABN: 22 061 855 525



NATUREWORKS 40 YEAR HISTORY

Theme Parks

Luna Park Entrance - The Face Of Luna Park - Sydney

Does your business need a FACE LIFT, then do what Luna Park did, they rang Natureworks.





NATUREWORKS 40 YEAR HISTORY

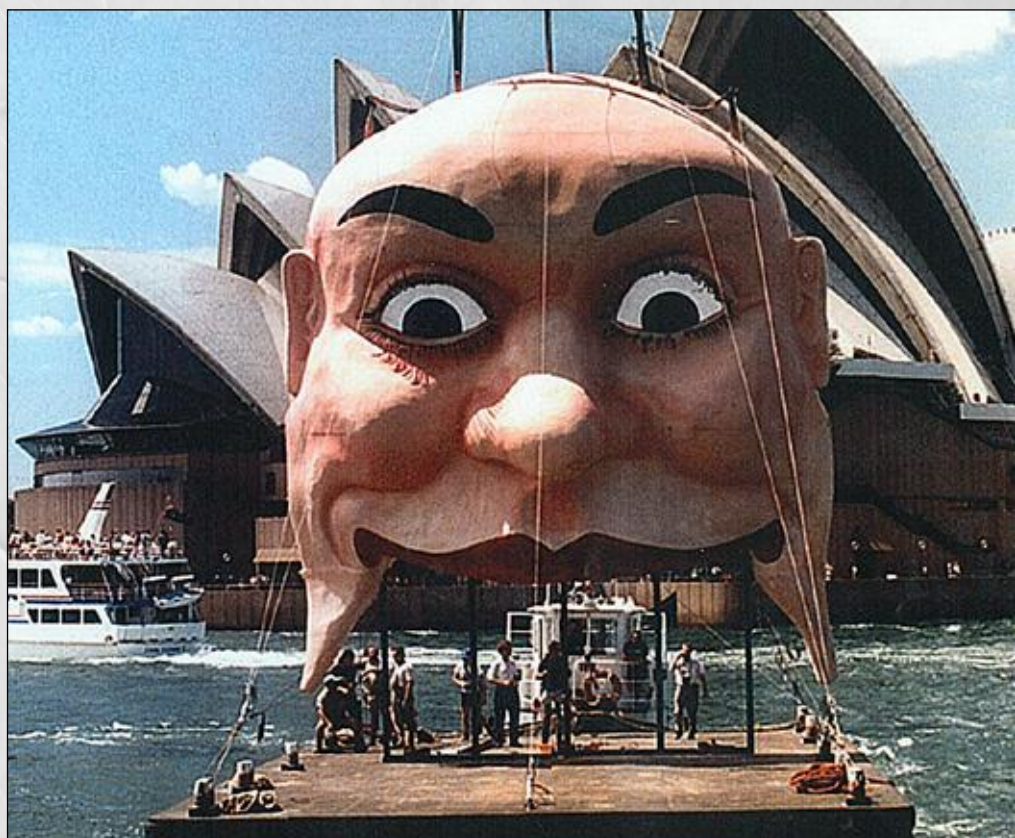
Theme Parks

Luna Park Sydney



Once the polystyrene sculpture was perfect, we fibreglassed a heavy duty shell over the front of the piece and then applied a coloured texture to the skin of the face. The styrene became sacrificial.

It was delivered by barge vertically across Sydney Harbour just for the fun of it!

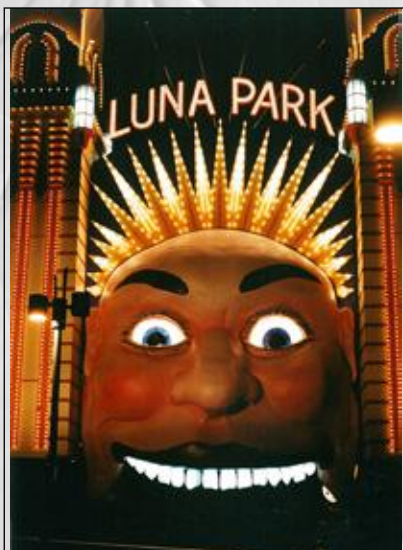




NATUREWORKS 40 YEAR HISTORY

Theme Parks

Luna Park Sydney





NATUREWORKS 40 YEAR HISTORY

Theme Parks

Luna Park - Tumblebug — 7 metres high



Stage 1 - Original Scaled Model

The Tumblebug of Luna Park in Sydney was rebuilt based on a small plasticine scale replica of the original.



Stage 2 - Building the Body



Stage 3 - Building the Head

The Tumblebug is based on massive steel pipe leg supports, the sculpture was formed in a 10mm mild steel bar frame to which perforated silver builders paper was stapled. This was then sprayed with a high density polyurethane foam both internally and externally, which was then fibreglassed and colour - gelcoated.



Stage 4 - Building the Legs



Stage 5 - Putting All the Pieces Together



Stage 6 - Completed



NATUREWORKS 40 YEAR HISTORY

Theme Parks

Sea World - Gold Coast Qld

Shark Bay Sea World



Shark Bay was built by the Natureworks team in 2003. The positive formed rockwork was constructed over a six month period for both the shark & pelagic oceanarium and the coral reef habitat tank.

Over 10,000 artificial corals were fabricated to complete the coral bommie diving lagoons, along with kelps, giant clams and numerous soft corals.

The immersive diving habitat was created to allow the public to swim freely in a rich coral reef environment. The shallow touch pools allow the public to get close up to live marine organisms.





NATUREWORKS 40 YEAR HISTORY

Theme Parks

Sea World - Gold Coast Qld



Shark Bay Sea World - Outside Aquarium View



Shark Bay Sea World - Inside Aquarium View



NATUREWORKS 40 YEAR HISTORY

Theme Parks

Sea World - Gold Coast Qld

World of the Sea Theatre - Aragonite bommie formations in concrete with elastomer synthetic corals by Natureworks prior to commissioning



World of the Sea Theatre - water & fish added





NATUREWORKS 40 YEAR HISTORY

Theme Parks

Sea World - Gold Coast Qld



Full Colour display of corals





NATUREWORKS 40 YEAR HISTORY

Theme Parks

Sea World Resort - Gold Coast Qld

Polar Bear Shores -
An Arctic Summer Habitat

**polar
bear**
shores





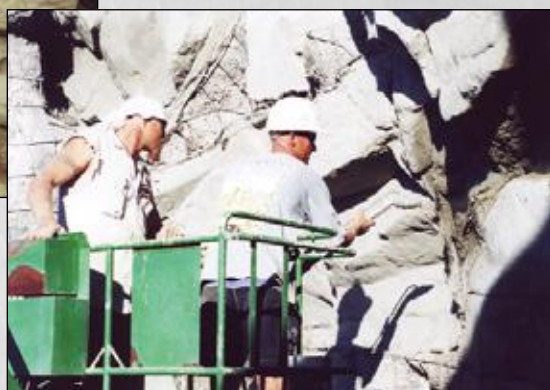
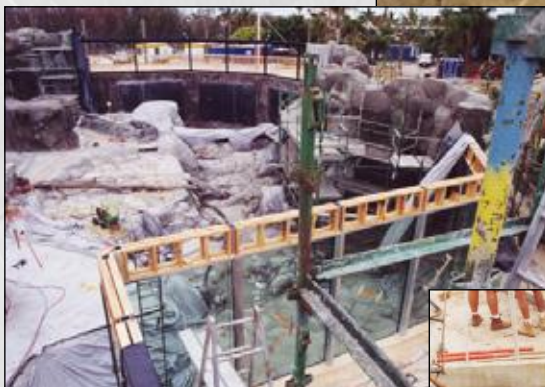
NATUREWORKS 40 YEAR HISTORY

Theme Parks

Sea World - Gold Coast Qld

Polar Bear Shores

Creating the
rock work
for the Polar
Bear Shores
enclosure





NATUREWORKS 40 YEAR HISTORY

Theme Parks

Sea World - Gold Coast Qld

Polar Bear Shores



Realistic rock work at the Polar Bear Shores enclosure



A fogging system adds the final touch



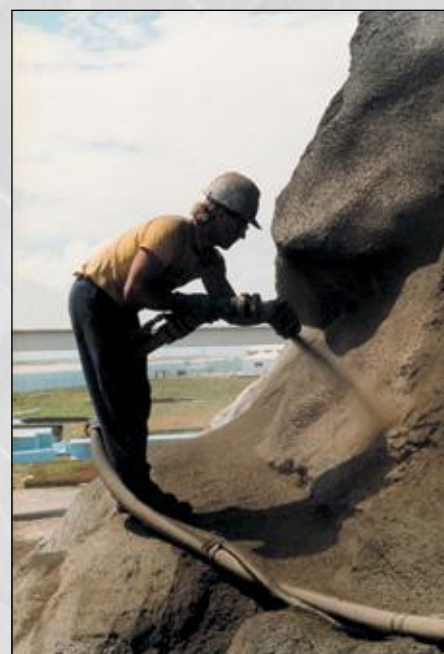
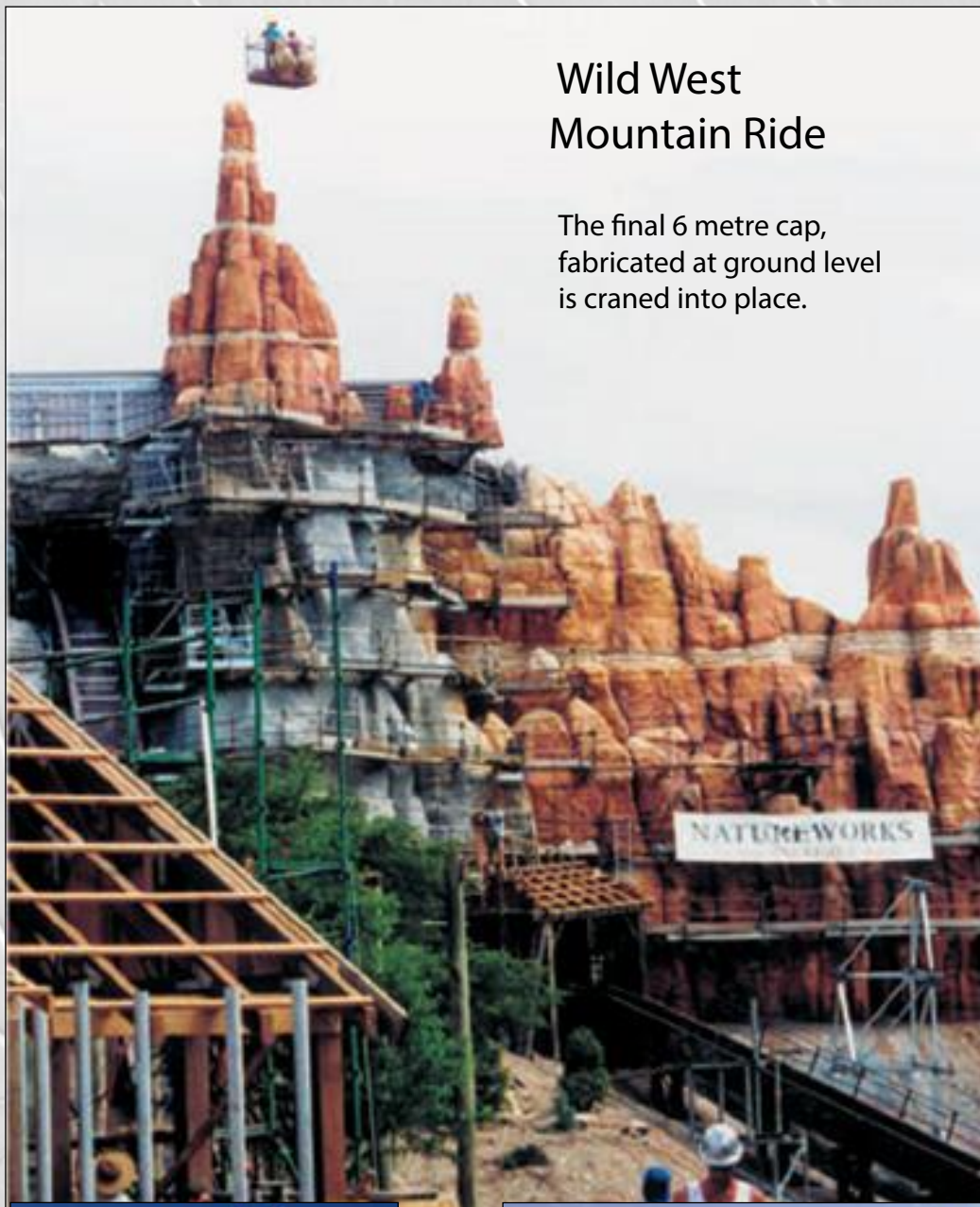
NATUREWORKS 40 YEAR HISTORY

Theme Parks

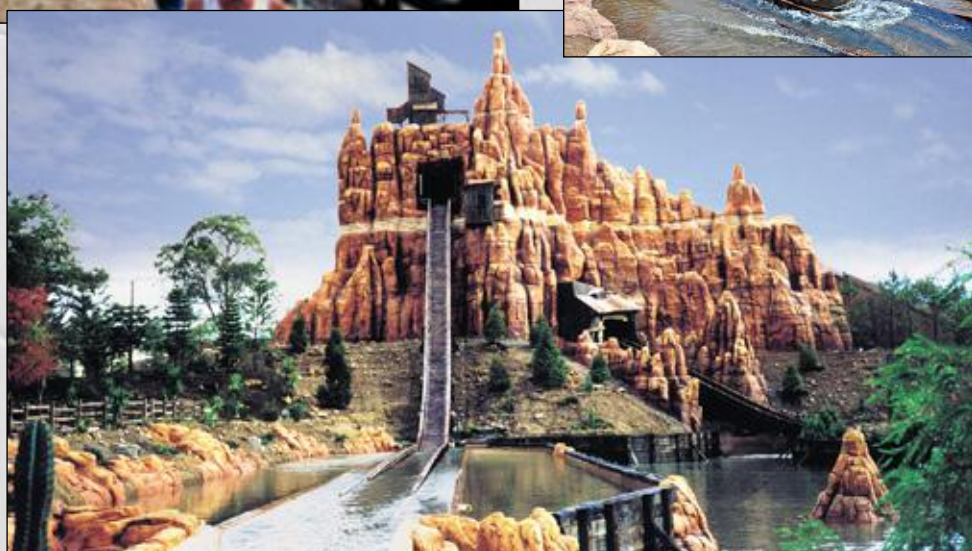
Movie World Wild West Ride

Wild West Mountain Ride

The final 6 metre cap,
fabricated at ground level
is craned into place.



Forming the concrete
with a concrete sprayer





NATUREWORKS 40 YEAR HISTORY

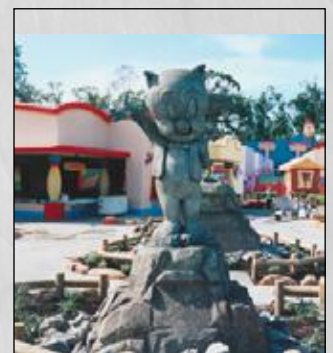
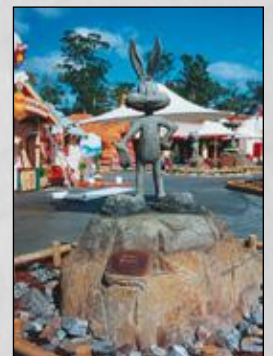
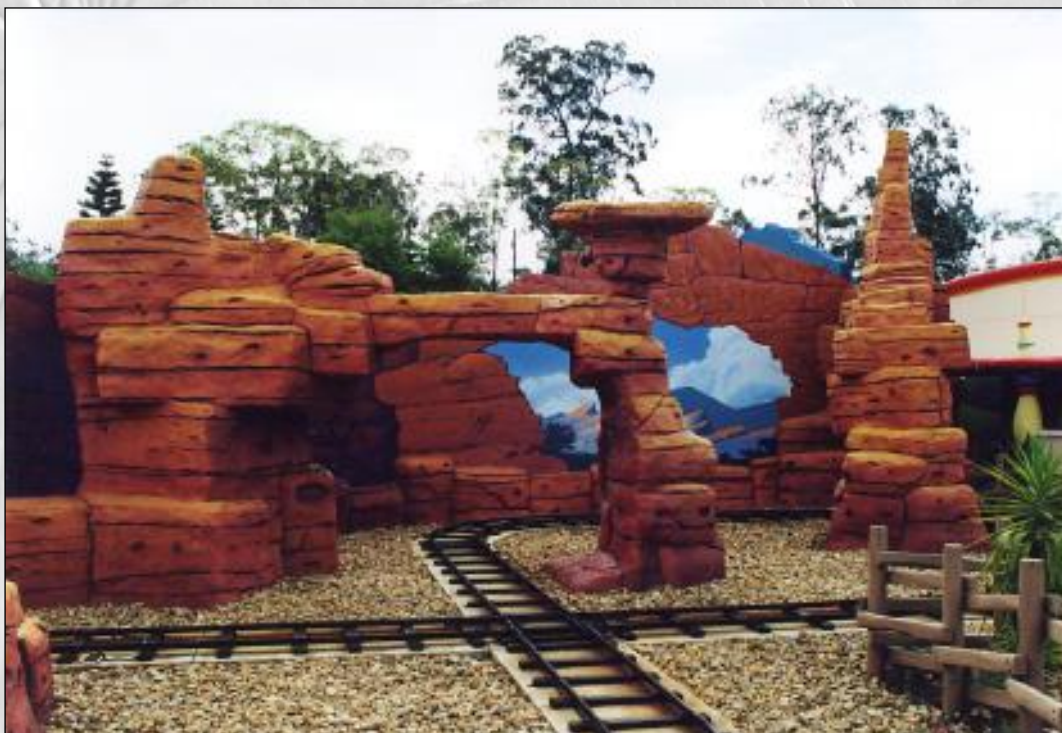
Theme Parks

Loony Tunes Ride - Movie World - Gold Coast



2,500sq metres of Grand Canyon rockwork in sprayed concrete for the roller coaster ride.

Natureworks also completed over 10,000sq metres of rockwork for the Looney Tunes Boat Ride. This work was sprayed in polyurethane foam and included many trees and assorted themed props.





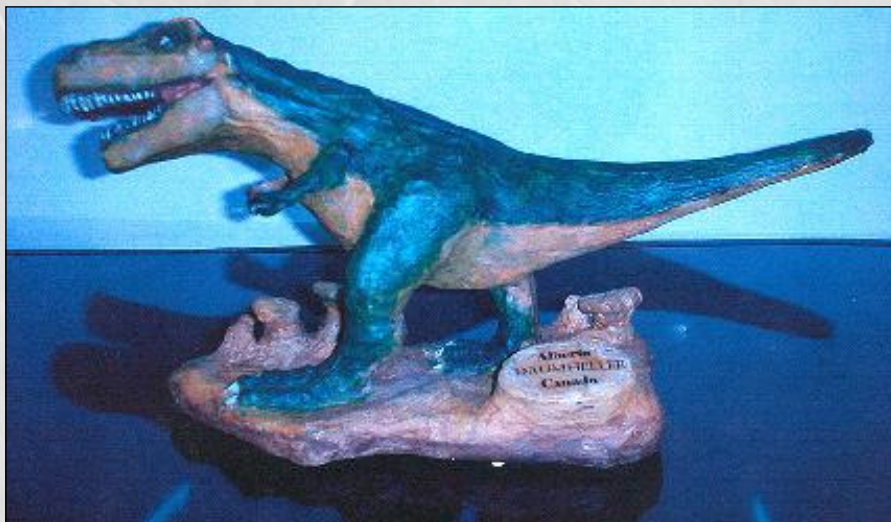
NATUREWORKS 40 YEAR HISTORY

Theme Parks

Largest Dinosaur in the World - 2002 - 20m tall & 40 m long

Stage 1

Finding a model



David Joffe was engaged not as the creative director to develop this project but as the technical director to enlarge this **dreadful** model to gigantic proportions so it could lay claim to being the biggest dinosaur in the world. It was built in pieces in the Philippines and shipped in 10 x 40ft containers to Drumheller, Calgary, Canada where it was erected.

"I was appalled when told that after much discussions, the client had approved this pathetic T-Rex toy like model". I was told to shut up and just make it bigger."

Stage 2 - Scaffolding Around the Head & Neck - **Awesome!**

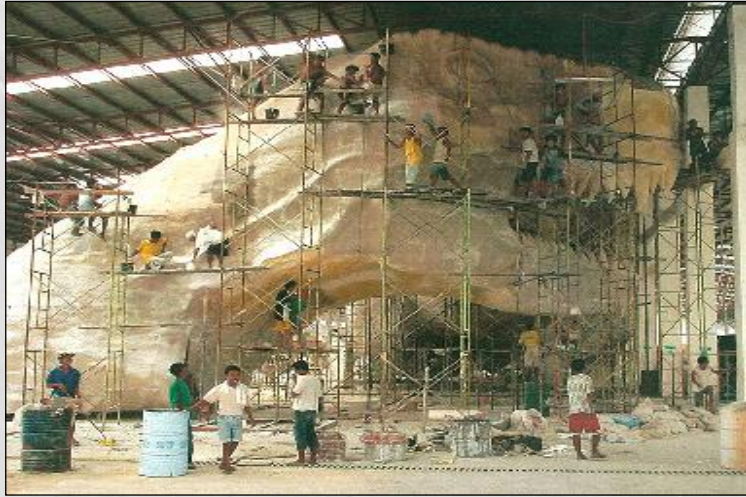




NATUREWORKS 40 YEAR HISTORY

Theme Parks

Largest Dinosaur in the World - 2002 - 20m tall & 40 m long



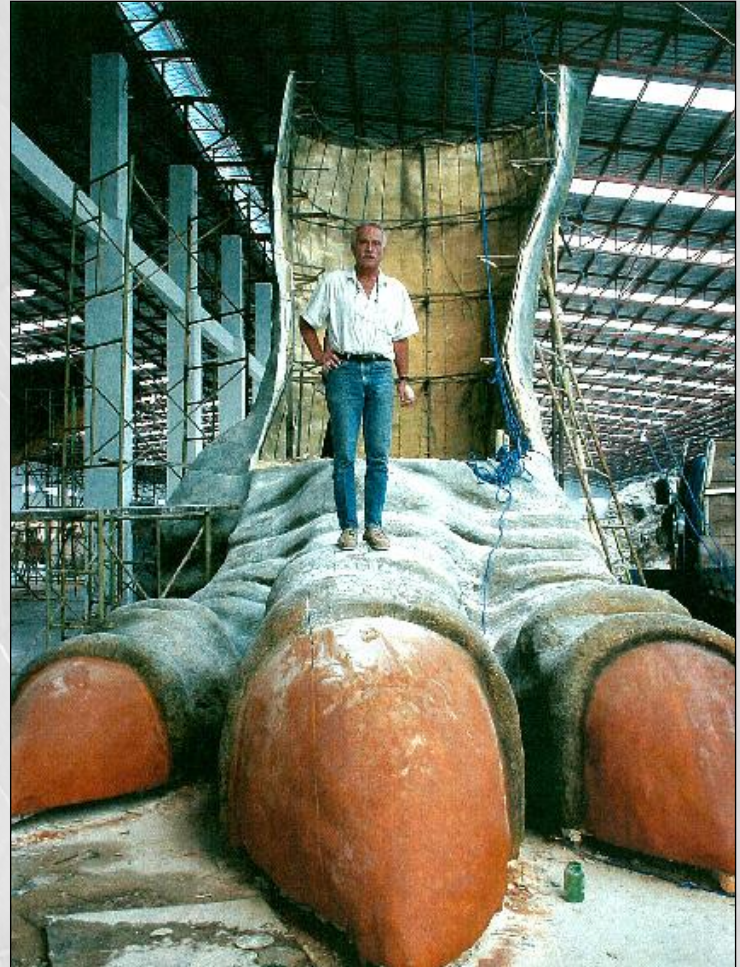
Stage 3

Scaffolding
Around the Head
& Neck

Stage 3

Awesome
foot!

Stage 4 Installation



Over one million dollars later, the finished dinosaur is as **shitty** as the original model.

The finished photos don't deserve the paper to be any bigger than a postage stamp.

This is what happens when artists egos are not tempered by realists.



Stage 5 Completion



NATUREWORKS 40 YEAR HISTORY

Special Exhibits

Expo 88 - Brisbane - New Zealand Pavilion

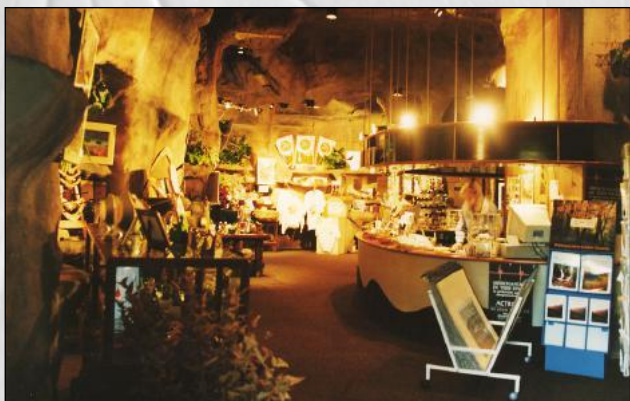
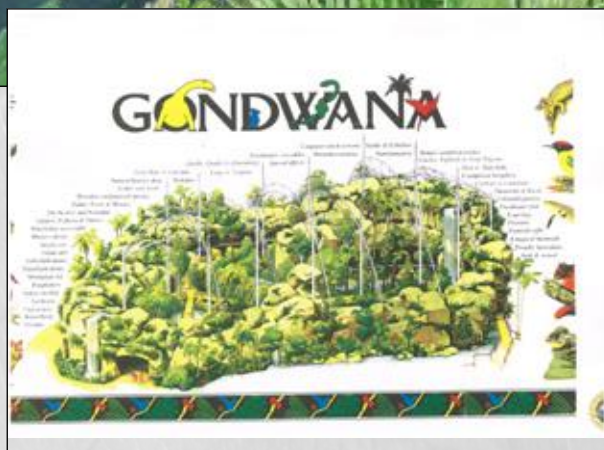




NATUREWORKS 40 YEAR HISTORY

Special Exhibits

Gondwana Rainforest Sanctuary - Brisbane City

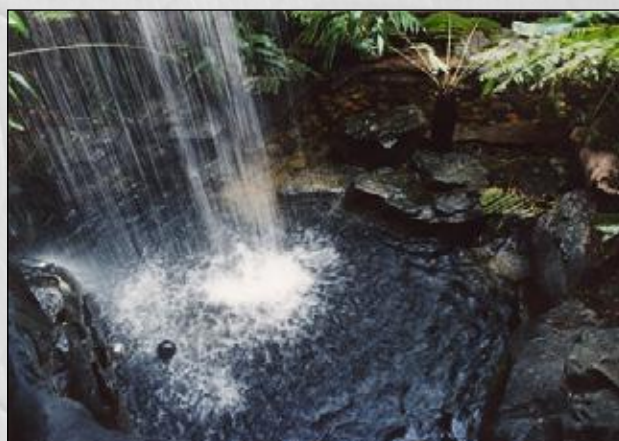
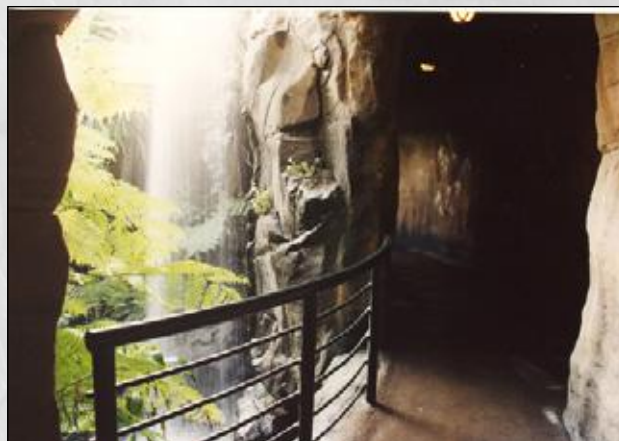




NATUREWORKS 40 YEAR HISTORY

Special Exhibits

Gondwana Rainforest Sanctuary - Brisbane City



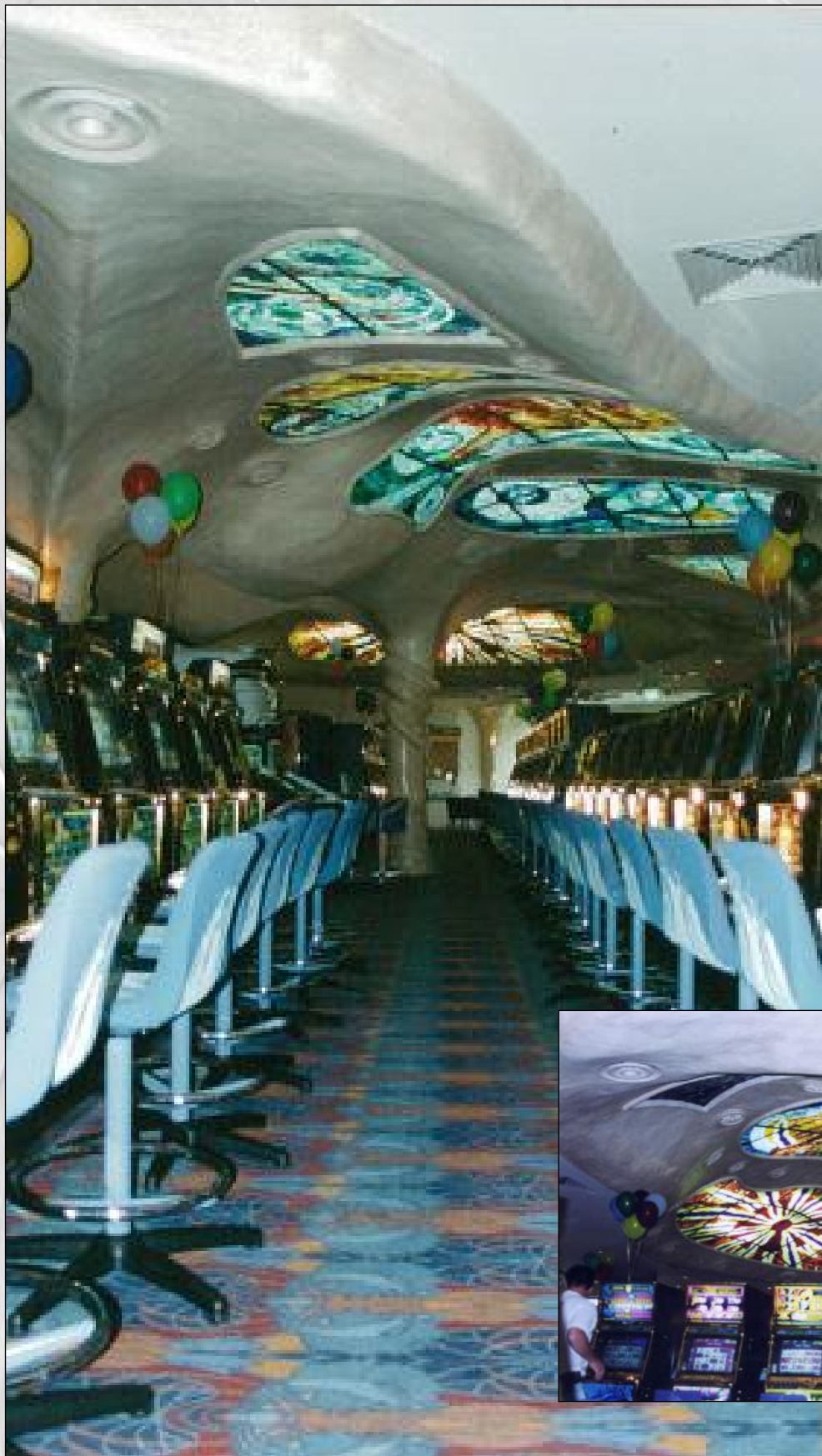


NATUREWORKS 40 YEAR HISTORY

Clubs, Restaurants & Hotels

St Mary's Leagues Club

- Guadi Ceiling Fitout of the Gaming Rooms





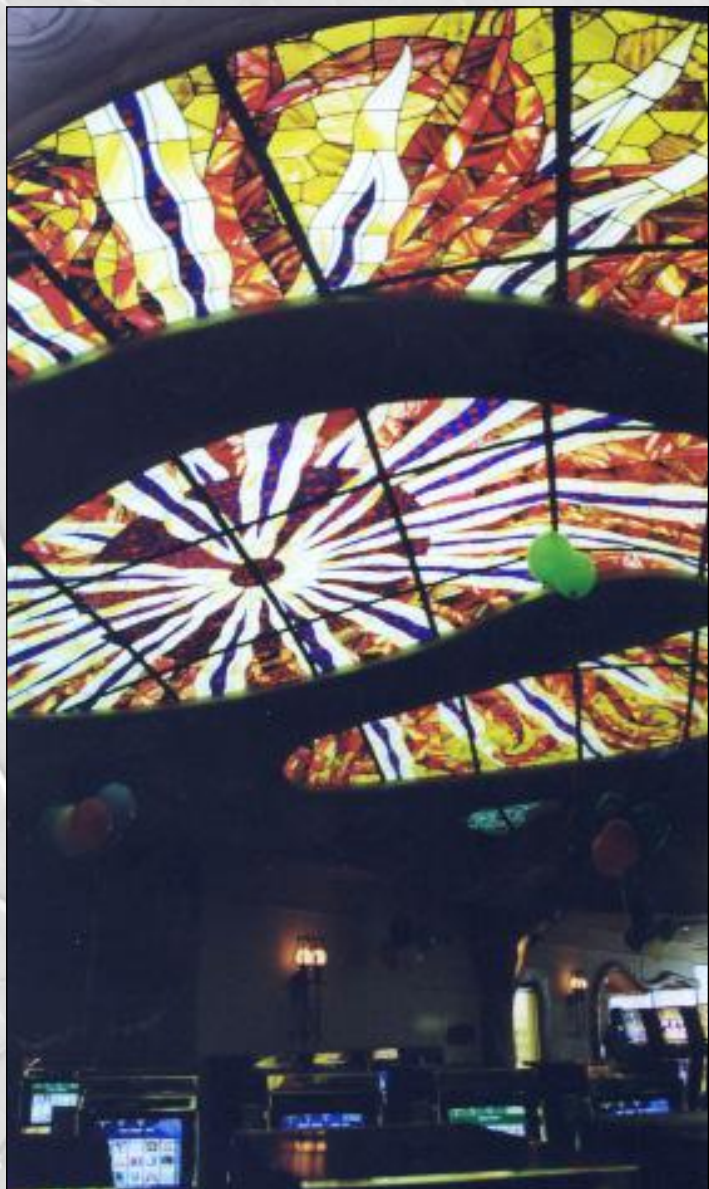
NATUREWORKS 40 YEAR HISTORY

Clubs, Restaurants & Hotels

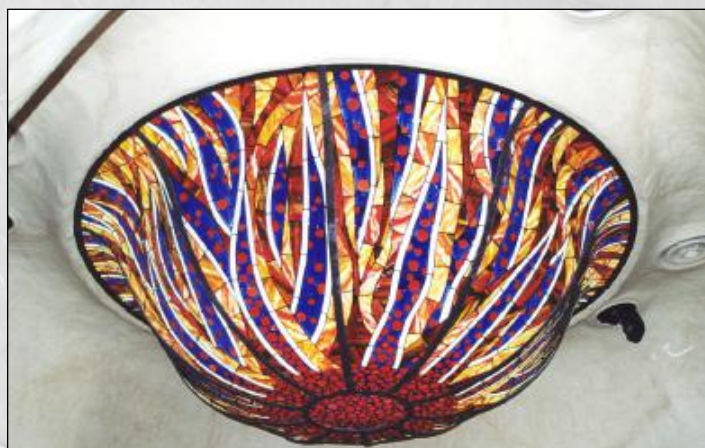
St Mary's Leagues Club

Fitout of the gaming rooms

The Guadi Ceiling - Fitout of the gaming rooms



The entire ceiling features were developed to replicate stained glass using an acrylic sheet with hand painted artwork.





NATUREWORKS 40 YEAR HISTORY

Clubs, Restaurants & Hotels

St Mary's Leagues Club

Fitout of the gaming rooms - Bar Front





NATUREWORKS 40 YEAR HISTORY

Clubs, Restaurants & Hotels

Bankstown Sports Club - Sydney

China Sea Restaurant fit-out





NATUREWORKS 40 YEAR HISTORY

Clubs, Restaurants & Hotels

Bankstown Sports Club - Sydney

Tree & Rock Work - Custom Designed for Bankstown Sports Club





NATUREWORKS 40 YEAR HISTORY

Clubs, Restaurants & Hotels

Radisson Hotel - Cairns Queensland

The rainforest Lobby



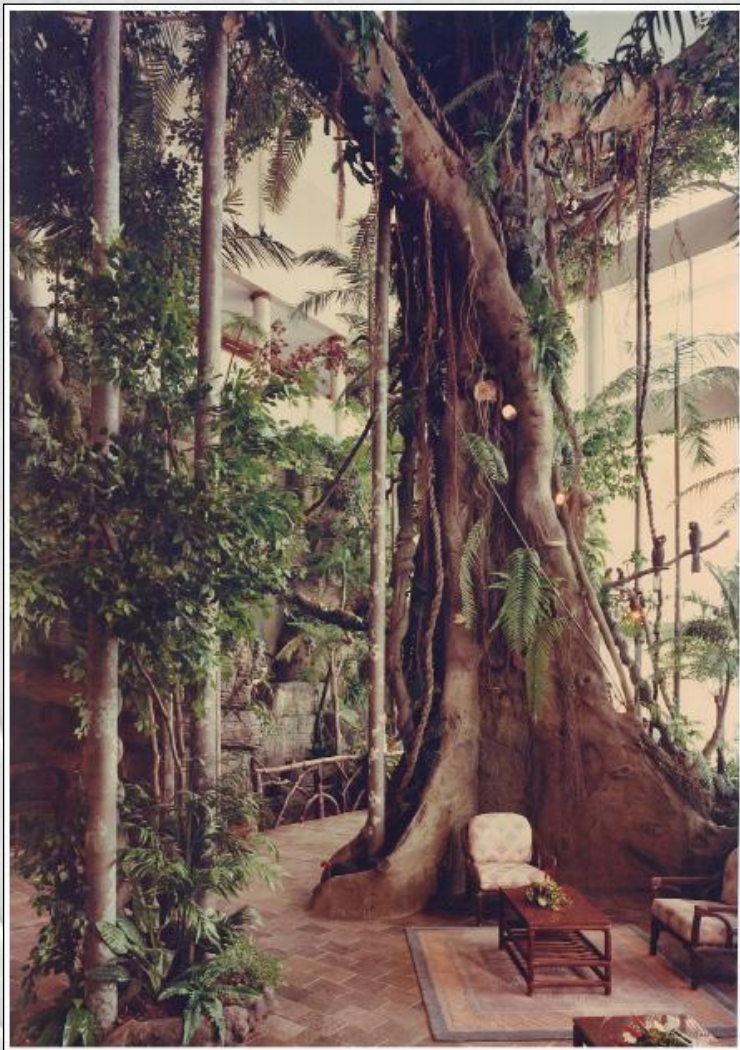


NATUREWORKS 40 YEAR HISTORY

Clubs, Restaurants & Hotels

Radisson Hotel Lobby - Cairns Queensland

Giant Strangler Fig - 17 Metres Tall





NATUREWORKS 40 YEAR HISTORY

Clubs, Restaurants & Hotels

Tree Of Life - Seoul Korea - 2008



The clients' intent was to lay claim to building the largest artificial tree in the world. It is over 11 metres in diameter at the base, through which the public can walk and the diameter where it "breaks through" the ceiling is still 6 metres wide.



NATUREWORKS 40 YEAR HISTORY

Clubs, Restaurants & Hotels

Tree Of Life - Seoul Korea - 2008

This tree was built at a cost of 1.7 million dollars in 2008 by a team from Natureworks. The trunk was built on site, but the branches were prefabricated at the Highvale studios in Samford, Australia and shipped in 10 x 40ft containers to site.





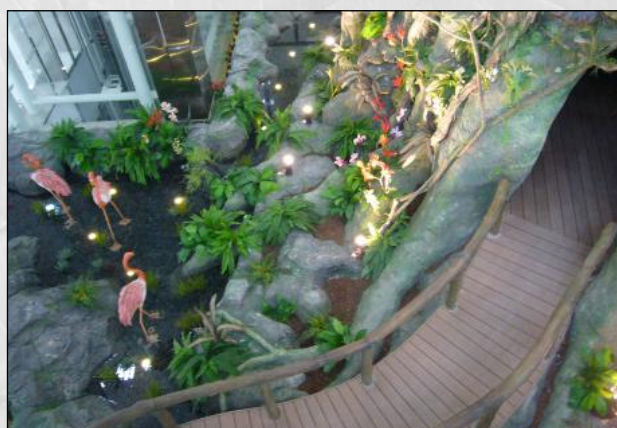
NATUREWORKS 40 YEAR HISTORY

Clubs, Restaurants & Hotels

Tree Of Life - Seoul Korea - 2008



This tree rises through 6 levels of a shopping mall in Sopoong in Seoul, South Korea.





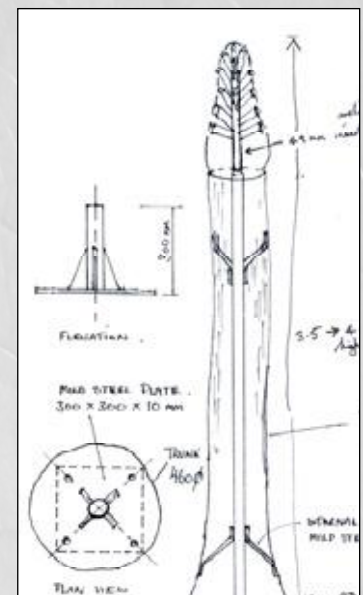
NATUREWORKS 40 YEAR HISTORY

Shopping Centres

Westfield - Palm Trees West Tuggerah NSW



Natureworks has also supplied & installed palm trees for Westfield Shopping Centres: in Cairns & Carindale Brisbane





NATUREWORKS 40 YEAR HISTORY

Tourist Attractions - Aquariums

Shanghai Oceanarium



Underwater Walkway - Shanghai Oceanarium



NATUREWORKS 40 YEAR HISTORY

Tourist Attractions - Aquariums

Giant Crocodile Wall Panel - Sydney Aquarium



This beautiful crocodile panel can be seen on the wall at the Sydney Aquarium, NSW.





NATUREWORKS 40 YEAR HISTORY

Tourist Attractions - Aquariums

Underwater World - Mooloolaba - Queensland



Natureworks fitted out all of the coral reef and aquarium environments for the initial opening of the aquarium in 1989



NATUREWORKS 40 YEAR HISTORY

Tourist Attractions - Cultural Centres

Dreamtime Cultural Centre - Rockhampton

A Torres Strait Island interpretive Centre within a Giant Dugong



Creating the Armature - Stage 1



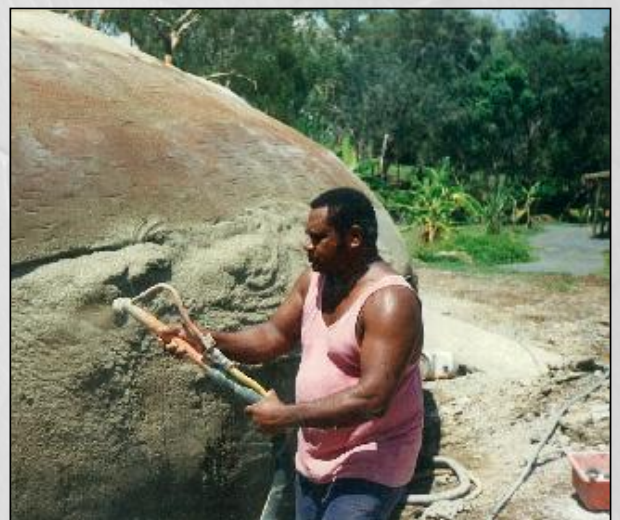
Creating the Armature - additional framing added



The steel armature ready to receive the first layer of render



Adding the door frames & application of wire netting over 10mm mild steel bar armature. (It is built in concrete)



Coating with frame with Cement

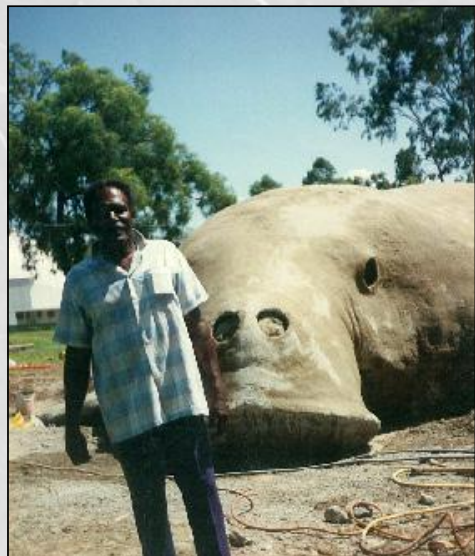


NATUREWORKS 40 YEAR HISTORY

Tourist Attractions - Cultural Centres

Dreamtime Cultural Centre - Rockhampton

A Torres Strait Island interpretive Centre within a Giant Dugong



Final rendering & carving complete



Final top coat added & turf laid



The completed Dugong



Inside the Dugong showing the small indoor theatre



Back view of the Dugong tail

Inside the cultural centre showing some artifacts





NATUREWORKS 40 YEAR HISTORY

Tourist Attractions - Cultural Centres

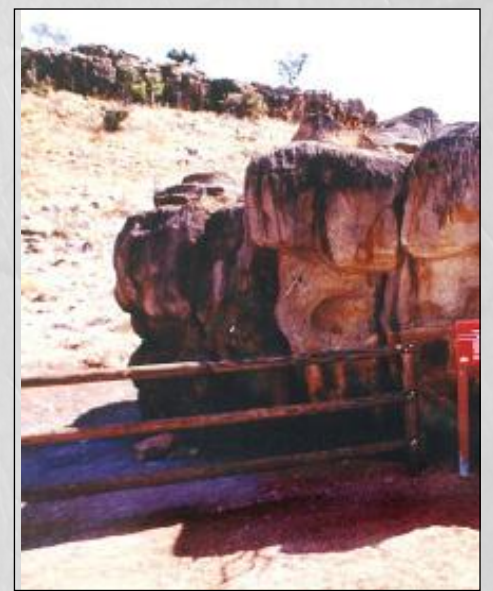
Interpretive Centre at Riversleigh Giant Prehistoric Bas Relief



A moment back in time - recaptures a giant prehistoric bird being attacked by a land dwelling giant crocodile.

Natureworks designed & built the entire rock structure, cave & the interpretive displays within.

This Giant bas relief was constructed in pieces and morphed into the walls of the interpretive centre created for the world heritage listed D-site at Riversleigh 400km north west of Mt. Isa Nth Queensland





NATUREWORKS 40 YEAR HISTORY

Entry Statements - Murals

White Waterworld at Dreamworld - Gold Coast - Mural Art



Kiosk before Mural



Kiosk After Mural





NATUREWORKS 40 YEAR HISTORY

Tourist Attractions & Parks

Currumbin Sanctuary - Wild Island Entry Statement



Concept Art of
Entry Statement





NATUREWORKS 40 YEAR HISTORY

Tourist Attractions & Parks

Currumbin Sanctuary - Wild Island Playground



"Underground" burrows children crawl through 40 metres of underground caves to discover the animals which dig burrows.



Giant Golden Orb weaving Spider & Climbing Net





NATUREWORKS 40 YEAR HISTORY

Entry Statements - Custom Fabrication

RNA Showground - Entry Statement - Brisbane QLD



Concept Art

Finished Art

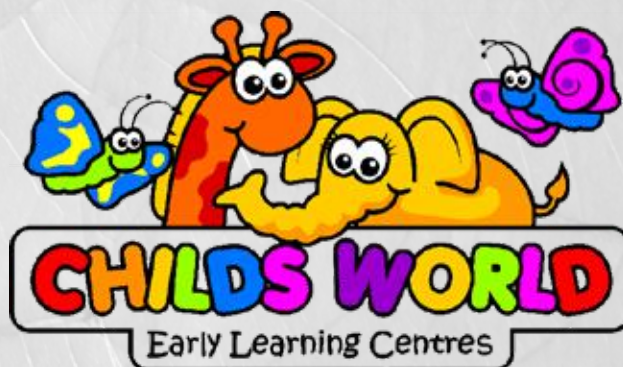
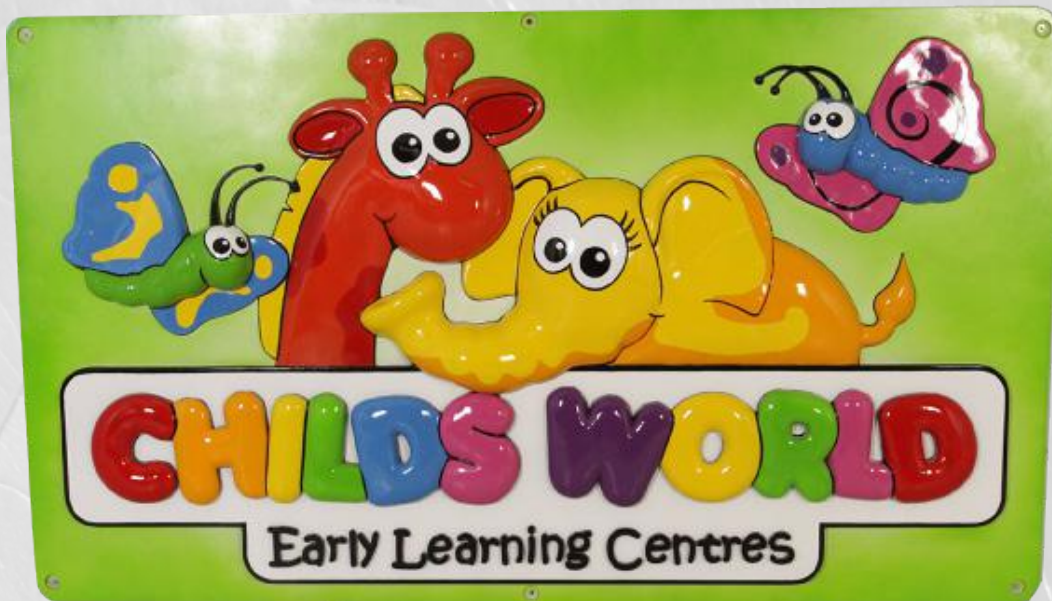




NATUREWORKS 40 YEAR HISTORY

Entry Statements - Custom Fabrication

Cairns - Child's World 3D Logo





NATUREWORKS 40 YEAR HISTORY

Custom Fabrication

The Giant Magnetic Termite Mound – 7 metres high



The Giant Termite mound was produced for a public display at "The Rocks" Sydney.



NATUREWORKS 40 YEAR HISTORY

Custom Fabrication

Black Hawk helicopter is over 13 metres long



Black Hawk Helicopter
13.5metres Long
P.O.A

This full size fibreglass black hawk helicopter is over 13 metres long and is shipped with only minor components to be fitted on site. See assembly instructions below.

It is of heavy duty manufacture and suitable for training and playground use. It is currently in use as a feature element on paintball fields in Australia and overseas. It can be custom painted with appropriate signage and colours.



Page 1



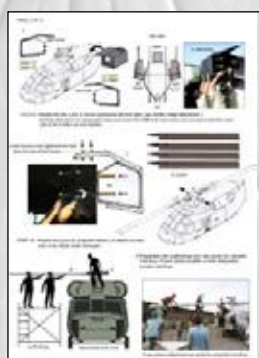
Page 2



Page 3



Page 4



Page 5



Page 6



Page 7



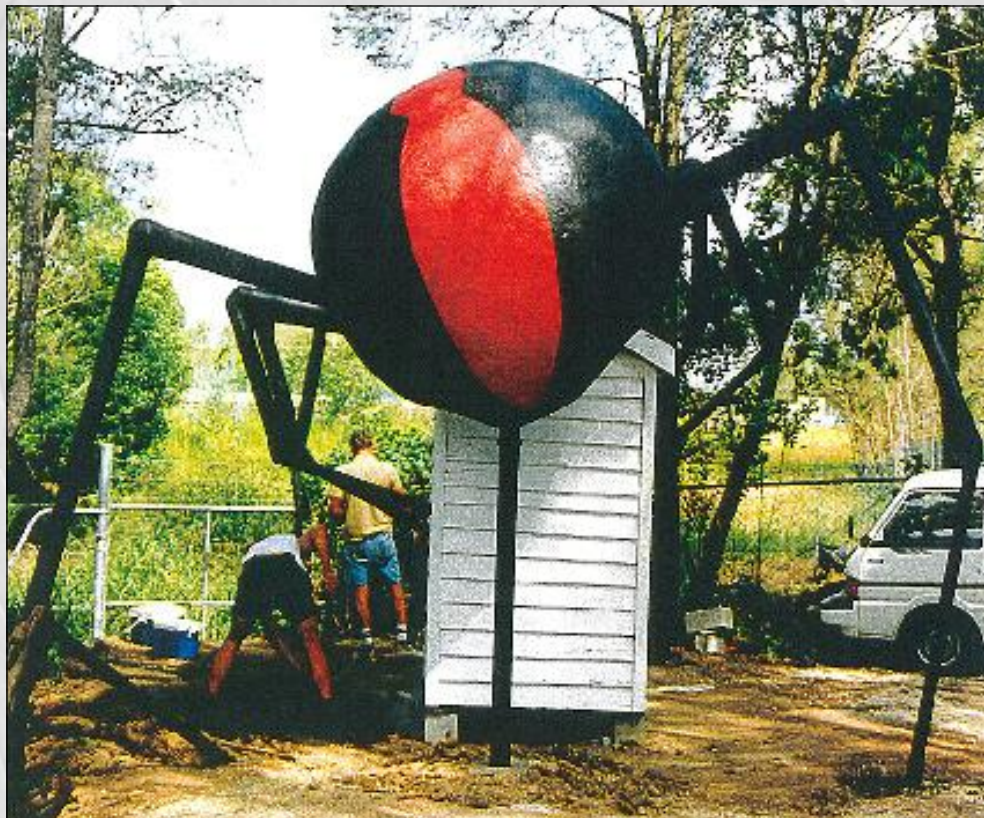
Page 8



NATUREWORKS 40 YEAR HISTORY

Custom Fabrication

Giant Redback Spider on Outback Dunny



This Giant Redback Spider was a custom build for Redback Landscape Supplies in Brisbane.





NATUREWORKS 40 YEAR HISTORY

Tourist Attractions - Zoos

Giant Koalas – 8 metres High - Coffs Harbour Zoo

This Giant Koalas Family on Tree Trunk was originally sculptured for the Coffs Harbour Zoo, but are now situated at Billabong Wildlife Park in Port Macquarie.





NATUREWORKS 40 YEAR HISTORY

Tourist Attractions - Zoos

Taronga Zoo - Sydney

Fitout of Serpentaria at Taronga Zoo - Sydney 1996



Habitat Reptile Enclosures - Made specifically for Taronga Zoo Exhibits



NATUREWORKS 40 YEAR HISTORY

Tourist Attractions - Zoos

Taronga Zoo - Sydney



Taronga Zoo - Sydney - Fossil Digs- Serpentaria

