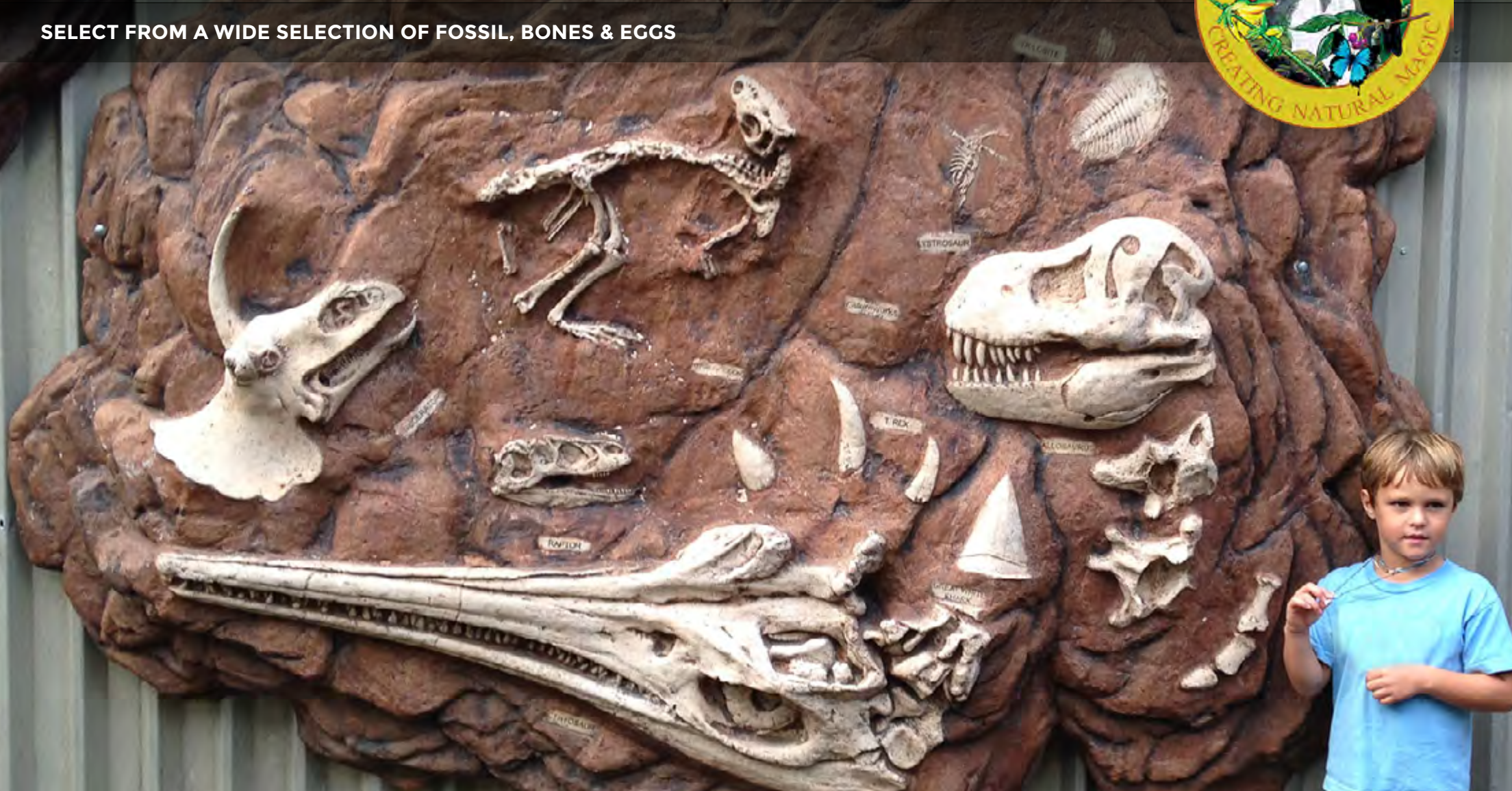


# PREHISTORIC FOSSIL DIGS

SELECT FROM A WIDE SELECTION OF FOSSIL, BONES & EGGS





# WELCOME TO NATUREWORKS!

A WORLD OF NATURAL MAGIC STARTS HERE...

Discover lifelike sculptures of nature's wonders, from animals, rocks and trees through to themed props, big things and child play fossil digs designed to make a big impression!

Create amazing experiences for education, tourism or commerce. Our sculptures, props and statues enhance playgrounds, wildlife parks, cultural centres, shops, hotels, theme parks and tourist attractions. They also provide enjoyment and natural beauty for home and garden decor.

Founded in 1979 by experienced museum preparator David Joffe, Natureworks is an extraordinary enterprise. It mixes the disciplines of the built environment with the creativity and imagination of exceptional artists with a passion for natural history and interpretive art.

#### Museum quality replicas

Since its inception, Natureworks has pursued a commitment to retain a museum standard master of every item of wildlife art the company produces. This now numbers over 2,000 items! This library of exhibit resources positions Natureworks as a unique supplier of highly detailed replicas for use in museums worldwide. It also means we can create copies of just about anything!

Over the years, Natureworks has been inundated with the strangest of requests and has subsequently amassed an unparalleled collection of natural history sculptures and oddities. Combined with director David Joffe's knowledge and expertise, this collection means Natureworks is a leader in the theming industry.

#### The art of the natural world

David has dedicated his life to creating a collection of moulds of nature's art. The collection includes literally thousands of animal, bird, reptile and amphibian castings. Original sculptures include logs, trees, roots, rocks, ponds, fungi, corals, invertebrates, termite mounds, water lilies, dinosaurs, crystals and fossils. These moulds provide a unique resource to create beautiful natural habitats and environments.

#### 40 years experience in the theming industry

Natureworks have created a wide range of sculptures and environments for zoos, aviaries, cultural centres, theme parks, botanical gardens, shopping malls, aquaria, playgrounds, mini-golf and museums.

Demand for Natureworks products increases as the world's pristine habitats dwindle. Contact Natureworks today to see how we can transform your project with custom design solutions and a dose of natural magic!

Natureworks is based in Brisbane northside, and delivers products and projects for customers throughout Australia and around the world.

Please contact us for more information about any of the products in this catalogue, or to enquire about custom design services.

#### Address

732 Mt Glorious Rd,  
Highvale, QLD 4520,  
Australia

#### Email

[info@natureworks.com.au](mailto:info@natureworks.com.au)

#### Telephone

+61 (0)7 3289 7555

#### Website

[natureworks.com.au](http://natureworks.com.au)

VISIT OUR WEBSITE







# CONTENTS

A GUIDE TO THIS CATALOGUE

Prehistoric Fossil Dig - Large (No Side)	1
Australian tertiary mammal fossil dig - Large (No Sides)	2
Australian tertiary freshwater dolphin fossil dig (No Sides)	3
Hulitherium fossil dig (mountain diprotodon) (without sides)	4
Hulitherium fossil dig (mountain diprotodon) (with sides)	5
Megalania Prisca - giant megafauna goanna (with sides)	6
PROCOPTODON GOLIAH (short nose giant kangaroo (with sides)	7
Thylacoleo Carnifex (Marsupial Lion) (with sides)	8
Wonambi naracoortensis (giant snake) (with sides)	9
Genyornis Newtoni - Large flightless bird fossil dig (with sides)	10
Natureworks In action	11 -14
Product Care	15
Additional extras	16

## USING THIS CATALOGUE

### Link to the website

If you are viewing this catalogue as a PDF on screen, you can click anywhere on a product table to go to the website product page. You can also click on product codes mentioned in the text, e.g. ([130011](#))

Polar Bear (Standing)	
Code	110036
Length	81 cm
Width	80 cm
Height	212 cm
Weight	60 kg

### Comparative product sizes

For each product, a small diagram shows the approximate size of the product compared to a human scale.



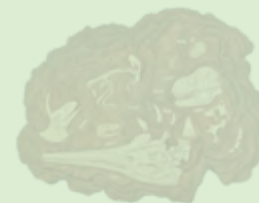
### Product extras

The icons at the bottom of the page show extras that may be available. Please see "Additional extras" on page 16 for more information.



### More catalogues

For other Natureworks catalogues, see [natureworks.com.au/catalogue](http://natureworks.com.au/catalogue)



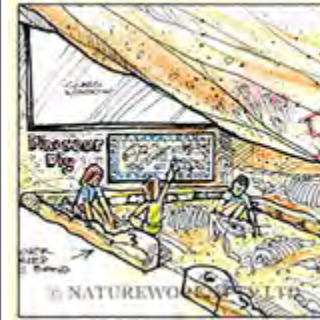
# PREHISTORIC FOSSIL DIG - LARGE (NO SIDE)

\* (Can be layed flat on the ground or mounted vertically on a wall)

Prehistoric Fossil Dig - large - No Sides	
Code	110102
Length	254 cm
Width	194 cm
Height	34 cm
Weight	61 kg Approx
Life size	



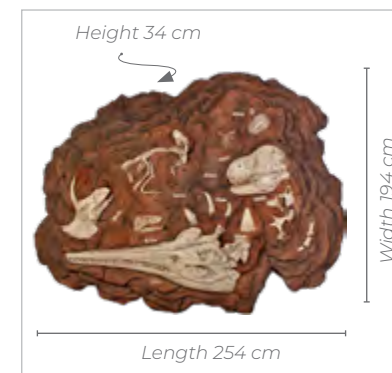

This casting is an ideal sculpt to be buried in a sandpit to provide an exploratory dig for young palaeontologists.



- This prehistoric fossil dig has a collection of fossils from our prehistoric past ready to be unearthed to reveal various species of dinosaurs.
- Large size
- Similar products available

Australian Tertiary mammal fossil dig also available (130108) or select from a wide range of megafauna digs.

- Benefits
- Promotes STEM education
- Depicts a collection of prehistoric fossil skeletons and bones
- Can be layed directly on the ground or bolted to a slab or wall
- Made of durable Fibreglass
- Exclusive to Natureworks



ADDITIONAL EXTRAS (SEE PAGE 16)

[VIEW ON WEBSITE](#)



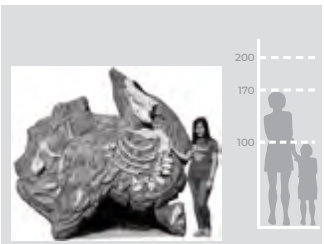
# AUSTRALIAN TERTIARY MAMMAL FOSSIL DIG - LARGE (NO SIDES)

\* (Can be layed flat on the ground or mounted vertically on a wall)

Australian Tertiary mammal fossil dig - large	
Code	130108
Length	253 cm
Width	244 cm
Height	39 cm
Weight	79 kg Approx



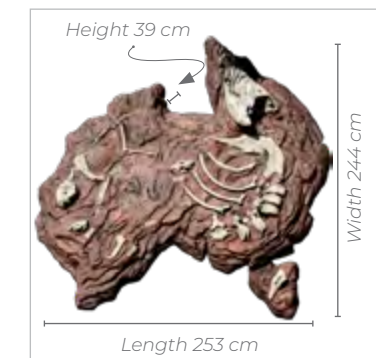
Playground fossil dig installation



- This large prehistoric fossil dig is a quick and easy way to create an interactive sandpit or decorative wall panel.
- It is intended as an educational play piece for indoor / outdoor area to be used as an exploratory dig for young palaeontologists to explore.
- Similar products available
- Australian Tertiary freshwater dolphin fossil dig (130112) or select from a wide range of megafauna digs.



- Benefits
- Promotes STEM education
- Depicts a collection of Australian tertiary mammals fossil skeletons and bones
- Can be layed directly on the ground or bolted to a slab or wall
- Made of durable Fibreglass
- Exclusive to Natureworks



ADDITIONAL EXTRAS  
(SEE PAGE 16)

[VIEW ON WEBSITE](#)



# AUSTRALIAN TERTIARY FRESHWATER DOLPHIN FOSSIL DIG

\* (Can be layed flat on the ground or mounted vertically on a wall)

Australian freshwater Tertiary dolphin fossil dig	
Code	130112
Length	267 cm
Width	124 cm
Height	19 cm
Weight	36 kg Approx



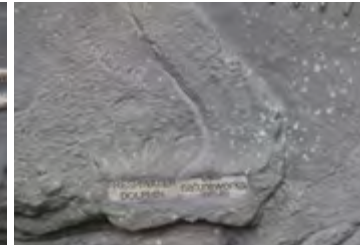
In production at Natureworks



Shown prior to colouring



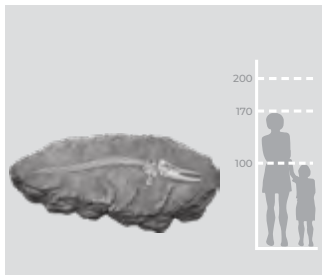
close up relief detail



Engraved Name label



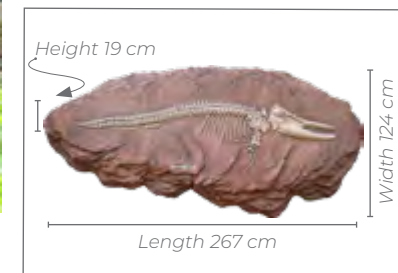
Interactive fossil dig installation



- Tertiary dolphins lived in freshwater rivers and lakes in Australia during the Tertiary period
- These dolphins were relatively small compared to modern marine dolphins
- Fossil discoveries provide valuable insights into the diversity of ancient dolphin species and their adaptations to different environments



- When the fossil dig bones have been unearthed a dolphins entire skeletal remains are revealed.
- Promotes STEM education
- Depicts an Australian animal fossil skeleton
- Can be layed directly on the ground or bolted to a slab or wall
- Made of durable Fibreglass
- Exclusive to Natureworks



ADDITIONAL EXTRAS  
(SEE PAGE 17)

[VIEW ON WEBSITE](#)

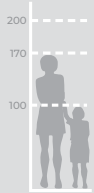


# HULITHERIUM FOSSIL DIG (MOUNTAIN DIPROTODON) (WITHOUT SIDES)

\* (Can be layed flat on the ground or mounted vertically on a wall)

## Hulitherium Fossil Dig Mountain Diprotodon (without sides)

Code	NW.MDD
Length	150 cm
Width	110 cm
Height	16.5 cm
Weight	35 kg Approx



- This Hulitherium fossil dig reveals the remains of our prehistoric megafauna past
- When the fossil dig is brushed away within the sandpit various Diprotodon bones are revealed gradually, similar to palaeontologist daily tasks
- Educators can use this dig as a visual tool that encourage discussions around our prehistoric past



In production at Natureworks



In production at Natureworks



Colouring tones to be added



Adding finishing touches



Playground fossil dig installation

- Promotes STEM education
- Depicts an Australian marsupial fossil skeleton
- Can be layed directly on the ground or bolted to a slab or wall
- Playground certification available
- Made of durable Fibreglass
- Exclusive to Natureworks
- This version does not include sides

Edge Height 16.5 cm



Length 150 cm

Width 110 cm

ADDITIONAL EXTRAS (SEE PAGE 16)

[VIEW ON WEBSITE](#)



# HULITHERIUM FOSSIL DIG (MOUNTAIN DIPROTODON) (WITH SIDES)

\* (Can be layed flat on the ground or mounted vertically on a wall)

## Hulitherium Fossil Dig Mountain Diprotodon (with sides)

Code	NW.HFDWS
Length	200 cm
Width	180 cm
Height	19 cm
Weight	40 kg Approx



In production at Natureworks



In production at Natureworks



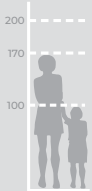
Close up of fossil details



In production at Natureworks



Diprotodon optatum life-size statue - Also available



- The Hulitherium lived in highland forests of New Guinea during the Pleistocene epoch - closely related to the larger and more well-know Diprotodon, which lived in mainland Australia
- Diprotodons are considered to have been some of the largest marsupial herbivores to have ever existed - similar to a modern-day cow.
- A wide collection of Australian megafauna fossil digs are available



- Promotes STEM education
- Depicts an Australian marsupial fossil skeleton
- Can be layed directly on the ground or bolted to a slab or wall
- Playground certification available
- Made of durable Fibreglass
- Exclusive to Natureworks



ADDITIONAL EXTRAS (SEE PAGE 16)

[VIEW ON WEBSITE](#)

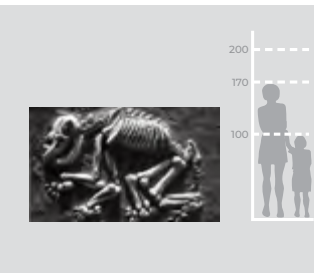


# MEGALANIA PRISCA - GIANT MEGAFUNA GOANNA (WITH SIDES)

\* (Can be layed flat on the ground or mounted vertically on a wall)

## Megalania Prisca Fossil Dig Giant Megafauna Goanna (with sides)

Code	NW.FDMP
Length	240 cm
Width	150 cm
Height	19 cm
Weight	40 kg Approx



- This dig provides insights into the diversity of ancient Australian Prehistoric Megafauna are generally larger species compared to today's megafauna.
- Megalania prisca, also known as the giant goanna or the giant monitor lizard, lived in the open woodlands and forests of Australia during the Pleistocene epoch
- The megalania is related to modern-day monitor lizards such as the komodo dragon but larger



showing depth of raised sides



Distant view



Side view

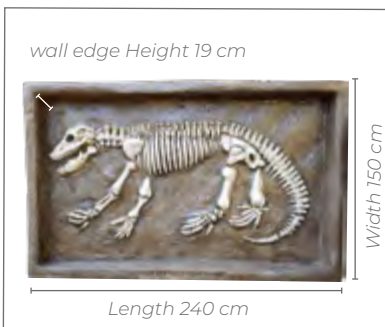


Engraved Megalania Prisca Name



Giant Megalania Sculpture also available

- Promotes STEM education
- Depicts an Australian lizard fossil skeleton
- Can be layed directly on the ground or bolted to a slab or wall
- Playground certification available
- Made of durable Fibreglass
- Exclusive to Natureworks



ADDITIONAL EXTRAS  
(SEE PAGE 16)

[VIEW ON WEBSITE](#)



# PROCOPTODON GOLIAH (SHORT NOSE GIANT KANGAROO (WITH SIDES))

\* (Can be layed flat on the ground or mounted vertically on a wall)

Procoptodon Goliah Fossil Dig (with sides)	
Code	NW.FDMP
Length	180 cm
Width	110 cm
Height	19 cm
Weight	50 kg Approx



In production- Design planning



In production- planning-2



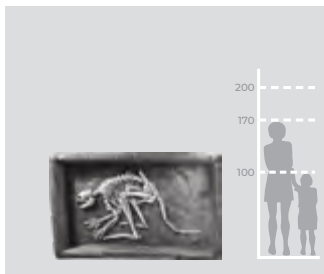
Detailed carving - in production



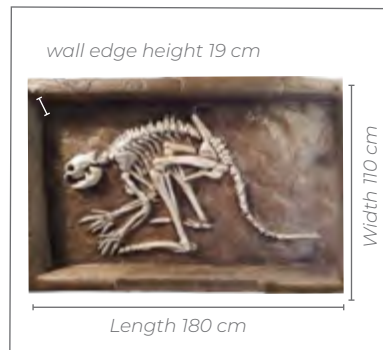
Engraved Procoptodon Goliah name



Giant Procoptodon Goliah Megafauna Sculpture also available



- The Procoptodon Goliah is also known as the short-faced giant kangaroo and lived in the open woodlands and grasslands of Australia during the Pleistocene epoch
- They were the largest kangaroo that ever existed they stood about 2 metres tall
- Perhaps these fossil digs may inspire the next generation of scientists and conservationists



- Promotes STEM education
- Depicts an Australian prehistoric marsupial fossil skeleton
- Can be layed directly on the ground or bolted to a slab or wall
- Playground certification available
- Made of durable Fibreglass
- Exclusive to Natureworks

ADDITIONAL EXTRAS (SEE PAGE 16)

[VIEW ON WEBSITE](#)



# THYLACOLEO CARNIFEX (MARSUPIAL LION) (WITH SIDES)

\* (Can be layed flat on the ground or mounted vertically on a wall)

Thylacoleo Carnifex Fossil Dig (with sides)	
Code	NW.FDTC
Length	180 cm
Width	110 cm
Height	19 cm
Weight	40 kg Approx



In production- Design planning



In production- planning-2



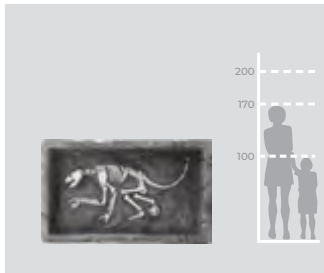
Detailed carving - in production



Engraved Megalania Prisca Name



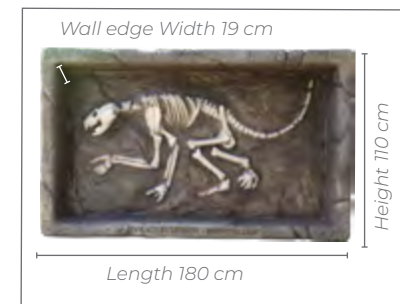
Thylacoleo - walking 3d Megafauna Sculpture also available



- Also known as the marsupial lion, lived in the woodlands, forests and scrub-lands of Australia during the Pleistocene epoch
- They were about the size of a modern lioness
- Was considered as one of Australia's top predators, It had powerful jaws, strong forelimbs with retractable claws and a semi opposable thumb



- Promotes STEM education
- Depicts an Australian marsupial
- Playground certification available
- Made of durable Fibreglass
- Can be layed directly on the ground or bolted to a slab or wall
- Exclusive to Natureworks



ADDITIONAL EXTRAS  
(SEE PAGE 16)

[VIEW ON WEBSITE](#)



# WONAMBI NARACOORTENSIS (GIANT SNAKE) (WITH SIDES)

\* (Can be layed flat on the ground or mounted vertically on a wall)

## Wonambi Naracoortensis (Giant Snake) with sides

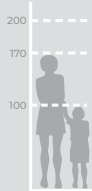
Code **NW.FDWN**

Length 180 cm

Width 110 cm

Height 19 cm

Weight 40 kg



- The Wonambi naracoortensis- is commonly know as the giant snake, and lived in the woodlands, wetlands and riverine environments of Australia during the Pleistocene epoch.
- Was know to grow up to 5 to 6 metres in length and was part of a group of ancient snakes known as mastoids. It had no direct descendants among modern snakes.
- Discoveries throughout the world giving us a better understanding of our rich history and biodiversity of our planet

ADDITIONAL EXTRAS (SEE PAGE 16)



In production- Design planning



In production- planning-2

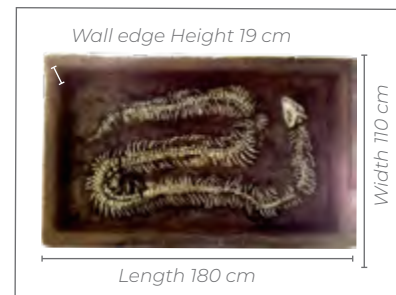


WONAMBI NARACOORTENSIS - GIANT SNAKE



Wonambi on tree trunk full 3d Megafauna Sculpture also available

- Promotes STEM education
- Depicts an Australian extinct snake fossil skeleton
- Can be layed directly on the ground or bolted to a slab or wall
- Playground certification available
- Made of durable Fibreglass
- Exclusive to Natureworks



[VIEW ON WEBSITE](#)



# GENYORNIS NEWTONI - LARGE FLIGHTLESS BIRD FOSSIL DIG (WITH SIDES)

\* (Can be layed flat on the ground or mounted vertically on a wall)

Genyornis newtoni (Giant flightless bird) with sides	
Code	NW.FDGN
Length	180 cm
Width	110 cm
Height	19 cm
Weight	40 kg



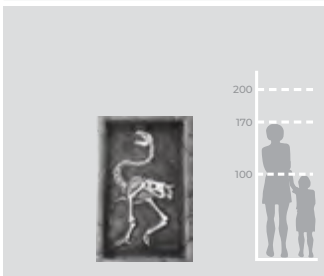
In production- Design planning



In production- planning-2



Bullockornis statue full 3d Statue also available

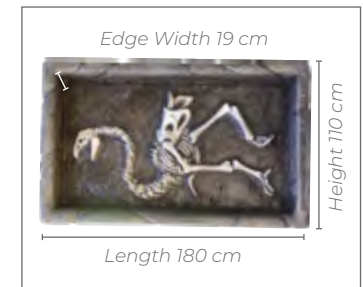


- This Genyornis newtoni was a large flightless bird that lived in the open woodlands, grasslands and scrub-lands of Australia during the Pleistocene epoch
- They stood about 2 metres (6.6feet) tall and weighed up to 230 kg
- This bird had strong legs adapted for running and a large, robust beak suited for crushing tough vegetation.



In production- Prior to colour toning

- Promotes STEM education
- Depicts an Australian bird fossil skeleton
- Can be layed directly on the ground or bolted to a slab or wall
- Playground certification available
- Made of durable Fibreglass
- Exclusive to Natureworks



ADDITIONAL EXTRAS (SEE PAGE 16)

[VIEW ON WEBSITE](#)

## NATUREWORKS IN ACTION

### BRISBANE CHILDCARE CENTRE INDOOR INSTALLATION

Installation included -

- 1 x Large fossil dig - with custom concrete edging
- 6 artificial rock wall panels
- 2 artificial rocks (can be used at seats)
- Artificial White sand
- Delivery & Installation



### GOLD COAST CHILDCARE CENTRE INDOOR INSTALLATION

Installation included -

- 1 x large fossil dig
- 1 x Large fossil bone - (used as climbing and seat) Prefabricated (Apatosaurus Femur Fossil)
- 1 large dinosaur egg
- 1 x large cracked dinosaur egg
- 3 x artificial rocks cycad trees and trunks
- 1 x flying tyrannodon dinosaur
- Artificial White sand
- Delivery & Installation





## NATUREWORKS IN ACTION-2

### CALOUNDRA PLAYGROUND OUTDOOR INSTALLATION

Installation included -

- 2 x Large fossil digs - with custom timber surrounds
- 2 custom artificial rock climbers - with fossils
- 3 artificial rocks climbing panels with holdz
- Artificial White sand
- Delivery & Installation



### BLI BLI CHILDCARE CENTRE OUTDOOR INSTALLATION

Installation included -

- 1 x large fossil dig
- 1 x Large cracked dinosaur egg
- 2 x Large fossil bone - (used as climbing and seat) Prefabricated (Apatosaurus Femur Fossil)
- 23 log stumps seats
- Custom timber surround
- Artificial White sand
- Delivery & Installation





## NATUREWORKS IN ACTION-3

### RIVERSLEIGH FOSSIL VISITORS CENTRE WALL PLAQUE

Installation included -

- 1 x Giant Megafauna Wall Fossil Plaque - Can be adapted to sandpit style fossil dig
- Giant artificial rock cave - Created on-site
- Delivery & Installation



### SCHOOL FOSSIL DIGS COLLECTION WOMEN IN STEM - OUTDOOR

Installation included -

- 6 x large Megafauna fossil digs with sides
- Artificial White sand
- Delivery & Installation





## NATUREWORKS IN ACTION

### THORNLANDS COMMUNITY PARK FOSSIL DIG - OUTDOORS

Installation included -

- 1 x Giant Diprotodon Optatum fossil dig without sides
- Giant triceratops skull and rib cage climber
- Delivery & Installation



### TARONGA ZOO SERPENTARIA FOSSILS EMBEDDED INTO ARTIFICIAL ROCK WALL

Installation included -

- Various fossil embedded to custom artificial rock wall climber
- Delivery & onsite manufacture & Installation





# Product care

## GUIDANCE ON HOW TO LOOK AFTER NATUREWORKS FIBREGLASS SCULPTURES

Take good care of your Natureworks fibreglass sculpture and you'll have many years of enjoyment, as well as protecting your investment.

Note: Extra heavy duty options are available - Remember to request this when requiring a quote.

### Care Guidance & Product Disclosure

All our models are produced from a durable high quality polyester resin, hand laminated and fully reinforced with FIBREGLASS. These are NOT to be confused with the thousands of low cost, unreinforced, highly brittle POLY-RESIN castings coming out of China, which are totally unsuitable for external use. The Natureworks products all receive a final clear coat in the factory, but all clear finishes will eventually deteriorate in full sun. It is advised that if you intend to display the item permanently outdoors, you should periodically reapply a clear protective coat, which should be tested first on an inconspicuous part of the casting. Water based acrylic outdoor paints are mostly used on our products except where clients require extra heavy duty laminates and high wear polyurethane paint systems, which are recommended for playground and other high risk areas, and for permanent full sun exposure.

These extra heavy duty items must be pre-ordered and will often require a significant lead time, and a corresponding increase in price. Our wildlife sculptures are NOT TOYS and only certain designs will be suited to be accessed by children who can 'love them to death' if not adequately supervised. These products will last indefinitely if used indoors but as the use of the products are beyond our control, and subject to the elements, no warranties are offered for outdoor use. If used outdoors and especially in full sun for any extended period, you should be prepared to undertake some maintenance to the finishes. Any protection from the sun, even the shade of the tree, will significantly reduce fading and other wear to the paint surfaces.

Like a fingerprint, no two Natureworks sculptures are exactly identical. Variances of colour, small surface

variations and "imperfections" or blemishes are an intrinsic characteristic to the items being handcrafted.

The paint finishes will not tolerate submersion under water and it is imperative that no water is allowed to pool on any painted surface. If necessary if water enters the hollow fibreglass core, drill a fine hole in any pooling area to assist with draining. The sun, rain and hail will accelerate the ageing of the paint finish. Bird droppings and the accumulation of dirt and leaves will compromise the surfaces.

The colour red and its derivatives are at the greatest risk of fading. Paint touch ups can be undertaken using any water-based acrylic paints.

You may do minor repairs using super-glue, epoxy resin or polyester putty fillers available from car accessory outlets.

If you choose to apply a clear sun protective coat over the paint you should first try a test section in an inconspicuous small area first to ensure compatibility with the existing paint surface.

### Packaging & Transport

As these items are usually bulky but light weight, most items are not boxed to reduce both shipping and transport costs. If minor scuffing or chipping occurs during transport we recommend that you touch the pieces up according to the instructions above and that you accept minor flaws as unavoidable. All items are individually checked prior to packaging and dispatch. Each product is carefully packed to ensure their safe journey and to best protect them from damage in transit. If a seamline splits in transport, it should be filled with polyester putty and touched up once it has been permanently sited.

© Copyright Natureworks Pty Ltd

All Rights Reserved

Under no circumstances are these concepts or designs to be copied in whole or part without written permission of Natureworks Pty Ltd.

#### Address

732 Mt Glorious Rd,  
Highvale, QLD 4520,  
Australia

#### Email

[info@natureworks.com.au](mailto:info@natureworks.com.au)

#### Telephone

+61 (0)7 3289 7555

#### Website

[natureworks.com.au](http://natureworks.com.au)

VISIT OUR WEBSITE







# Additional extras

## PRODUCT CUSTOMISATION OPTIONS & SERVICES FOR NATUREWORKS CUSTOMERS

Nearly all of our products can be customised to suit your needs. This page lists the main options available, but if you need something special or aren't sure what's the best option, just ask. We'll happily create a variation on a sculpture, provide different fixings, or come up with a completely new design for that extra wow factor.



### *Mounting plate or other fixings*

A steel mounting plate lets you fix a sculpture to a flat surface, increasing safety and security. Some products are suitable for wall mounting, or suspended from above using hooks and wires.



### *2Pac finish*

If your product is going to be used outside, 2Pac finish is a must, as it will help protect it from the elements. Even for internal use, 2Pac can help reduce the effects of sunlight or sticky fingers! See our product care guidance for more information.



### *Custom size or format*

Want it smaller, larger or giant size? Need a sculpture facing the other way, or in a different pose or ratio? We can create variants of most products; just say what you need when enquiring.



### *Custom colours*

Our animal, plant and rock sculptures generally feature colours from nature, but we can finish products in any colour you want. You can specify corporate or team colours, glow-in-the-dark finish, extra bright colours or other variations.



### *Product signage*

We can provide a custom sign with your branding, educational information or wayfinding guidance. Signs can be integrated or provided separately, depending on the product.



### *Internal steel armature*

An internal armature made of steel gives extra strength and is standard for sculptures designed to be climbed on, such as artificial rocks or playground items. This extra can be added to any product we create, to make it more robust.



### *Playground use and certification*

At Natureworks we're passionate about the value of nature-based play, and many of our sculptures are ideal for children's' play areas. We can advise which products are most suitable, discuss safety features, and certify products to meet Australian standards for use in playgrounds and child care facilities..



### *Movable fixings or design*

If you need to be able to move the product around, we can provide relevant fittings. For example, we can provide a wheeled base, or adjust the design to make it more movable.



### *Delivery*

Natureworks can deliver anywhere in Australia or around the world, or you can pick up from our premises in Highvale, near Samford on Brisbane's northside. Shipping costs depend on the type, size and number of products ordered, as well as the delivery location and insurance requirements. In many cases we will make custom-built crates to protect your items. Please ask for a quote.

Our address is: 732 Mt Glorious Road, Highvale, Queensland 4520, Australia.



### *Installation*

For larger projects, we can provide a professional on-site installation service. We have a range of construction equipment to suit different sites and installation types. Please discuss your needs when requesting a quote.







# DINOSAUR DIG

INTERACTIVE DINOSAUR DIG EXPERIENCE- CONCEPT ART

