



Philanthropy  
Connections

# ANNUAL REPORT

## 2024

**PHILANTHROPY CONNECTIONS  
FOUNDATION**

**2024**  
Annual Report

RSIN / Tax Number  
(NL): 851226784

Mailing Address:  
Revaleiland 486  
1014 ZG Amsterdam  
The Netherlands

[philanthropyconnections.org](https://philanthropyconnections.org)  
[info@philanthropyconnections.org](mailto:info@philanthropyconnections.org)

Office Address:  
62 Wongwaen Road  
Chang Phueak, Mueang, Chiang Mai 50300  
Thailand

tel. +66 (0) 52 005 779





# CONTENTS

1. MESSAGE FROM THE FOUNDER	01
2. ABOUT PCF	05
3. A YEAR IN THE LIFE OF PCF	11
4. MONITORING & EVALUATION	16
5. PROJECT SPOTLIGHT	18
6. VIDEOS OF THE YEAR	19
7. EVENT	21
8. ACTIVE PROJECTS	23
9. FINANCES	27
10. OUR BOARD	34
11. OUR TEAM	35
12. ACTIVE VOLUNTEERS IN 2024	37
13. OUR SPONSORS AND SUPPORTERS	39



## MESSAGE FROM THE FOUNDER



Imagine a boy in Myanmar, sitting cross-legged in a makeshift classroom in a conflict zone. Outside, his world is falling apart, but inside, he is learning. He is safe. He is full of hope.

That's what makes our work necessary and worthwhile. In 2024, urgent needs continued to grow, while we made some of the toughest decisions in the history of our foundation. In past years, we spent more than we received, because the needs were too pressing to ignore. But that wasn't sustainable. So, we paused, reassessed, and strengthened our financial foundation.

### "2024 WAS A TOUGH YEAR BUT A GOOD YEAR. WE STRENGTHENED OUR FOUNDATION, GREW LOCAL SUPPORT, AND RESPONDED TO URGENT NEEDS."

Three major projects were paused or scaled back, and fewer staff worked directly on delivering projects. As a result, spending on project objectives dropped by 22% compared to 2023. These were tough but necessary choices to stabilise our finances.

At the same time, you'll notice in the financial statements on page 27 that fundraising costs rose by 51% and administration by 53%. This may seem at odds with our scaling back, but these increases reflect strategic investments: hiring key staff, upgrading systems, and strengthening our infrastructure. These steps were essential to improve how we operate and raise support, now and in the future.

It's also important to note that €122.022 in our accounts is already committed to project payments in 2025. These funds are not surplus, they're future obligations. We deeply value your trust and honour it through sound financial stewardship, which remains one of our core principles.

But our story of 2024 isn't just about the numbers. Support from the Thai community grew. One huge milestone was the Dutch ambassador's spouse becoming our goodwill ambassador. His advocacy, and that of the ambassador, helped open many doors for us. Literally: they opened their residence for a gala dinner that sparked strong local interest.

We don't take this growing momentum for granted. We stay self-critical and committed to doing better. Our mission remains the same: to help as many people as we can, as effectively as we can, and bring others along with us.

My visit to the Netherlands in September brought renewed connections and fresh insights, even if one key event didn't meet our fundraising hopes. And while we built for the future, we also met rising emergency needs, in Myanmar and during October's floods in Thailand.

2024 was a tough year but a good year. We strengthened our foundation, grew local support, and responded to urgent needs. It confirmed we're on the right path. Thank you for being part of this.

Warm regards,  
Sallo







## MESSAGE FROM OUR SPONSORS

While the world is on fire with ego-fueled wars and conflict, manmade divisions, and unfortunate natural disasters, victimising so many innocent civilians, one might be tempted to lose hope in humanity. The Philanthropy Connections Foundation gives us back some hope for a better world with their many humanitarian contributions. Helping war-stricken communities and families in refugee camps to find peace and stability. Raising awareness about the importance of education for children in need to have a better chance in life. Working relentlessly with a team of professionals to ensure that people in need will prosper.

I myself am a direct result of the goodwill of humanitarians. As a newborn, my single mother and I fled the communists in Laos after my mom escaped from their prison to give birth to me. We found refuge in neighbouring Thailand in a refugee camp and were helped with kindness by humanitarians. We will always remain thankful. Now, I live an amazing life in Bangkok as a diplomat's spouse with three children and my husband, who is the Dutch Ambassador to Thailand, Cambodia, and Laos. Life is good for us. But for so many families, life is at risk without the help of humanitarians.

PCF has been doing amazing humanitarian work for more than a decade now. Founder Sallo is someone who knows the art of giving so well. I admire him for having the biggest heart for people in need and doing the utmost to help make this world a better place. I am proud and humbled to say I am part of his team as a PCF goodwill ambassador. Our Dutch Ambassador family vouches for the great humanitarian work of PCF.

**Carter Duong**

PCF Goodwill Ambassador

## ABOUT PCF

**29**      **100+**

Active Projects      Volunteers have supported PCF  
in 2024

---

**13.380+**

10.192 Direct and 3.188 Indirect  
Beneficiaries in 2024

---

**€305.312**

Spent on projects in 2024





## NGO

We are a non-profit organisation that supports people in vulnerable situations in Thailand, Myanmar, and Cambodia.

## PARTNERSHIP

We work in partnership with local organisations that know the needs of their communities. They are the ideal partners to implement projects that will address these problems. What they often lack are the resources to find help from outside.

## CONNECTION

We find the required help for our partners - we connect, we engage, we facilitate. We shine a light on small, effective grassroots organisations.

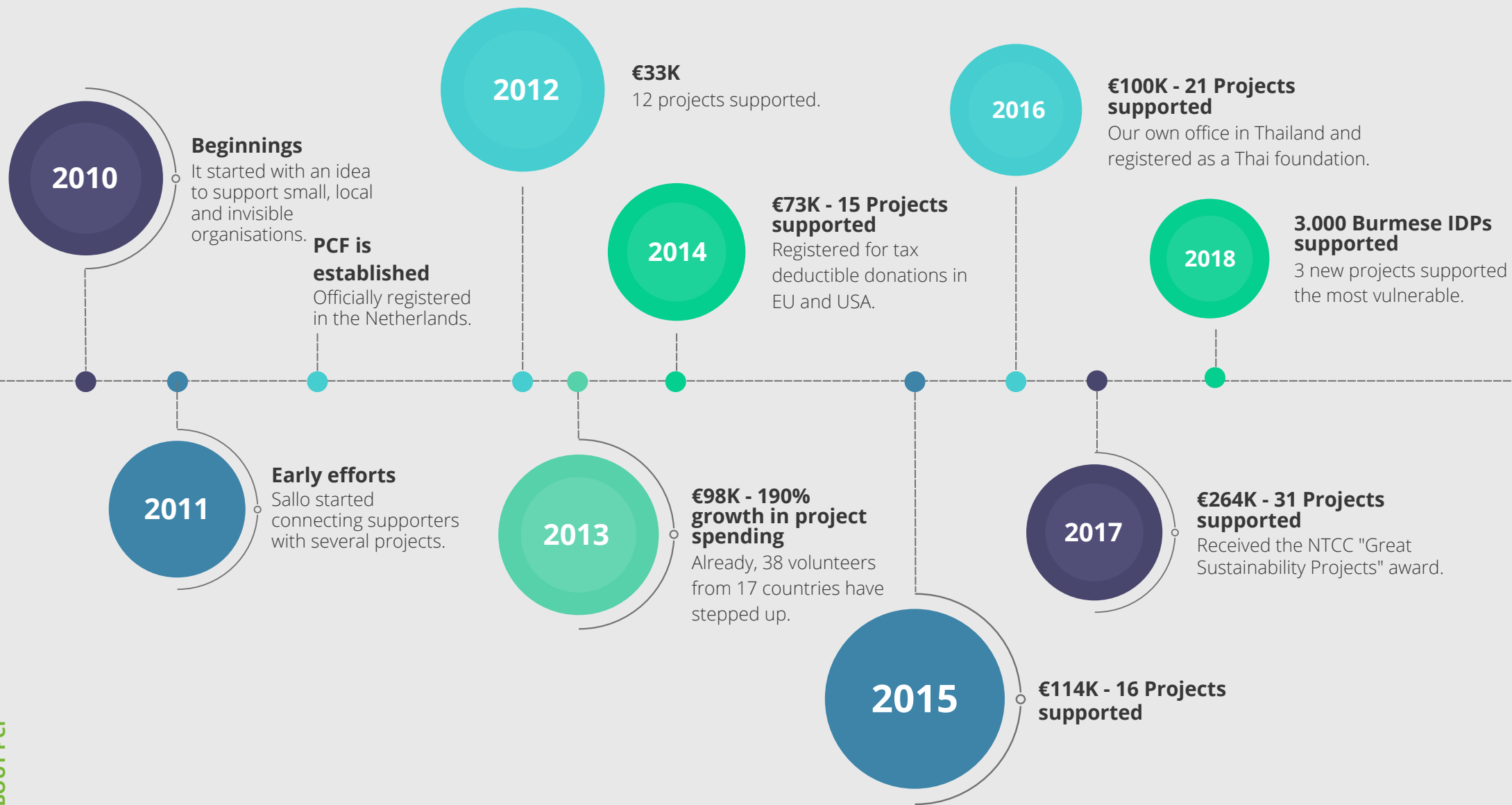


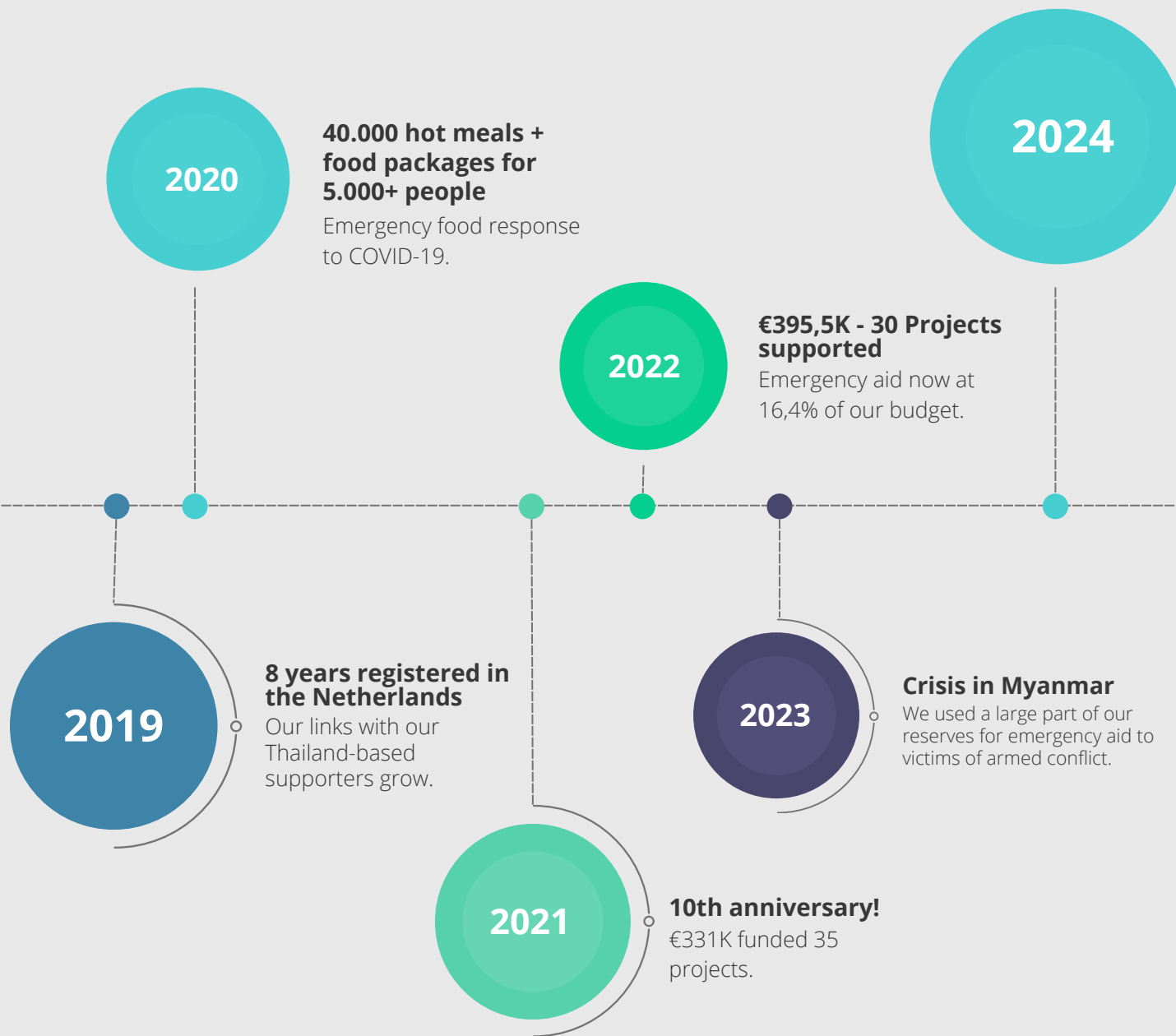
## ABOUT PCF

Our portfolio of projects is diverse, but every project we invest in is created to improve the living conditions of the most vulnerable and underserved. Each one enables impoverished communities to become more self-sufficient and gives its members the tools to lead independent, dignified lives.

We are delighted with our past success record and are committed to continued growth to support more people and expand our treasured community of supporters, donors, volunteers, and partners.







### Focused Action, Meaningful Impact

29 projects supported, 13.380 people reached with life-changing aid, across conflict zones, flood-affected areas, schools, clinics, and communities in crisis.



## January

English and computer classes at KJSRC empowered 100+ children with skills for education and future employment. Thanks to Gerard de Blok!

## February

Thanks to Michael Franklin, urgent medical supplies reached a northern Burma IDP camp, supporting health amid ongoing insecurity.

## March

Aunchernpond completed her 5-year scholarship, graduating in education. Her journey is inspired thanks to many generous supporters.

## April

A birthday wish turned into action (Sallo's Birthday Fundraising Campaign), supporting emergency aid for 6.200+ displaced people fleeing conflict. Every share matters.

## May

On-site at KJSRC, our team assessed needs and boosted education and safety practices for students and teachers alike.

## June

Mol's scholarship eased her family's financial strain, allowing her to focus on studies and teaching. She completed a challenging research project and is now preparing for the teacher licensing exam.



## July

Kru Pachporn, a teacher at a PCF-supported school, became a government employee, boosting stability, literacy, and local education.

## August

Carter Duong joins PCF as Goodwill Ambassador, bringing media expertise, heartfelt support, and fundraising energy to our mission.

## September

In Loi Sam Sip IDP camp, PCF supported education, health, and food for 34 vulnerable children, thanks to generous donors.

## October

PCF aided 40 flood-affected families in Chiang Mai, delivering essential relief to those overlooked by other support efforts.

## November

“A Night at the Embassy” raised vital support for children in need, thanks to generous sponsors, chefs, artists, and attendees.

## December

Amid hardship, our education project in an IDP camp advanced literacy and growth, thanks to the unwavering support of sponsors.





## MESSAGE FROM OUR SPONSORS

As an IT company with young colleagues in a region that's still developing, we see the differences in background, education, and opportunities every day. For us, it's a no-brainer to give something back to those who don't have the same chances. But we don't have the knowledge or the time to do this ourselves. That's why we're incredibly proud to support Sallo and the Philanthropy Connections Foundation because we believe it's important that people who didn't get the same starting point as our colleagues still get a little push in the right direction.

**Leon Marcelissen**

Founder Colengo - The Netherlands

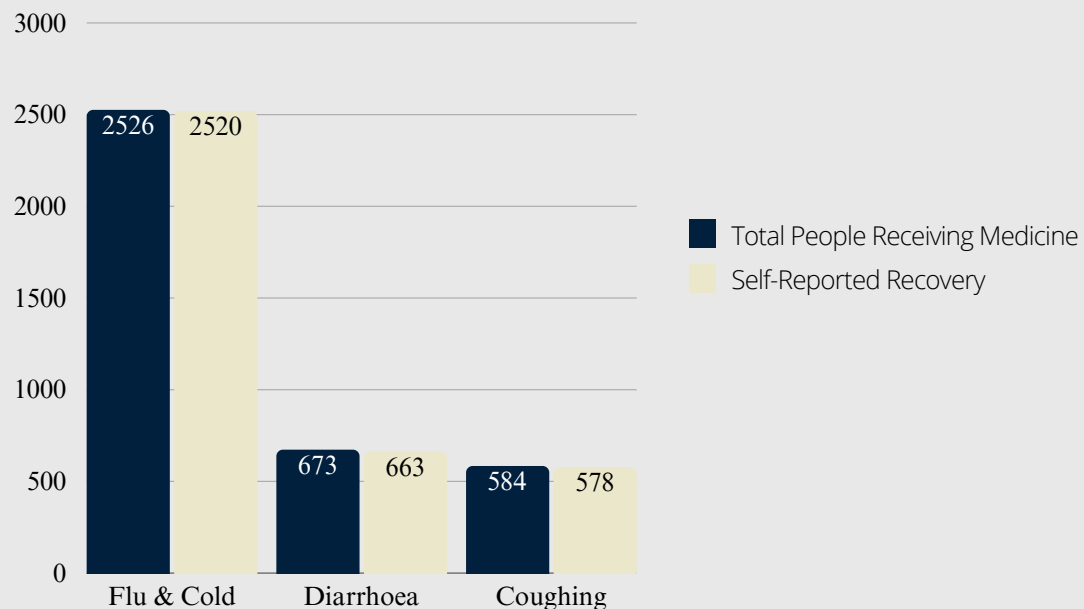




## MONITORING & EVALUATION

This year, PCF made significant strides in improving its Monitoring & Evaluation processes to enhance both efficiency and inclusivity. We refined our Activity Report Templates (ARTs) to streamline data collection, simplify input for partners, and involve more PCF staff in shaping the information we gather. Output Report Templates (ORTs), which initially posed some challenges, now provide more frequent and accurate data in Excel format, enabling us to support partner narratives with solid figures. For example, the Lahu Women’s Organization successfully used an ORT to collect reliable healthcare data from a conflict zone. Additionally, we have expanded our focus to include monthly academic updates and mentoring for PCF scholarship students, as well as more frequent tracking for ongoing projects. These improvements have led to clearer reporting, reduced burden on partners, and more meaningful insights for our donors.

### People Receiving Medicine & Self-Reported Recovery (2024-2025)



**1.800**

People received medicine for cold, and flu

**200**

People received medicine for diarrhea

**324**

People received medicine for respiratory diseases





## PROJECT SPOTLIGHT: MOSQUITO NETS FOR MIGRANT WORKERS IN FANG BY SATHIRAVIJA HEEBTHONG (EARTH)

During my field visit, I was deeply saddened by the living conditions of the migrant workers I met. Most of them work extremely hard but, due to their situation, have no access to other job opportunities. Their shelters cannot be called bedrooms, houses, or buildings. They are simply small, mouldy, and humid spaces (4x2 meters) shared by approximately five people, with only one shared restroom outside.

One of the most heartbreaking moments was seeing a four-year-old boy covered in mosquito and lice bites while his mother, suffering from malaria, could not go to the hospital out of fear, due to their vulnerable status as migrant workers. Additionally, they are constantly exposed to insecticide fumes, which negatively affect their health. It's the reason why when I came back to the office and talked about this with Sallo, I expressed my desire to start a mosquito net distribution project. Even though it's not a large initiative, the impact would be significant, as it could at least reduce their suffering from mosquito bites.





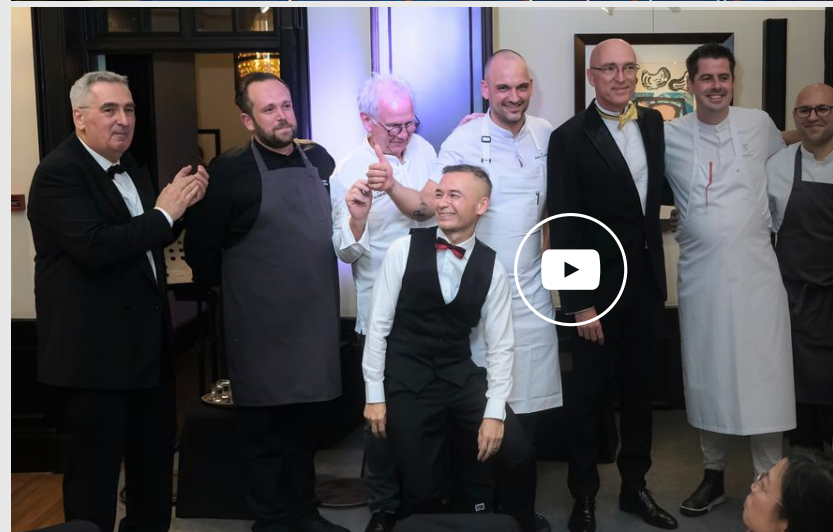
"Dreams Beyond Borders" shares Pop's journey from Myanmar to Koung Jor Shan Refugee Camp. Through education and friendship, he's found safety, hope, and new dreams, like becoming a YouTuber. Thanks to generous sponsors, children like Pop are building brighter futures. Your support turns dreams into possibilities across every border.

## VIDEOS OF THE YEAR

Our Videos of the Year section spotlights powerful stories that bring our mission to life. From the resilience of refugee children to heartfelt birthday fundraising to the generosity shown at our embassy gala, each video captures the real impact of your support and the lives changed through education, safety, and opportunity.



We raised funds to support emergency aid for displaced families, especially those fleeing conflict in Myanmar. Thousands received vital help. Donations provided food, shelter, and safety. For my birthday, I asked for your support. Every contribution brought hope and made a real difference for people facing crisis and uncertainty.



"A Night at the Embassy" brought together generous guests for an evening of fine dining, art, and purpose. Proceeds directly supported education, healthcare, and essential services for underprivileged children in Thailand, Myanmar, and Cambodia, helping local organisations deliver life-changing support where it's needed most.

# Event

## A NIGHT AT THE EMBASSY FOR CHILDREN IN NEED IN THAILAND

In a truly special evening, H.E. Mr. Remco van Wijngaarden, Dutch Ambassador and his spouse, PCF Goodwill Ambassador Mr. Carter Duong, graciously opened the doors of their residence to host a gala dinner in honour of Philanthropy Connections Foundation. Held at the Dutch Embassy in Bangkok, the event brought together distinguished guests for an unforgettable night of fine dining, live performances, and heartfelt generosity. Guests were treated to a six-course gastronomic experience prepared by six Dutch Master Chefs from across Thailand, paired with exquisite wine. The evening featured world-class Dutch and Thai musical performances, creating a vibrant cultural celebration. A highlight of the event was the charity auction, with all proceeds going directly to PCF's projects supporting children in need across Thailand. The event successfully raised both awareness and vital funds, demonstrating the power of community and compassion.





# ACTIVE PROJECTS IN 2024

29

Active Projects



**MYANMAR**

5 Projects



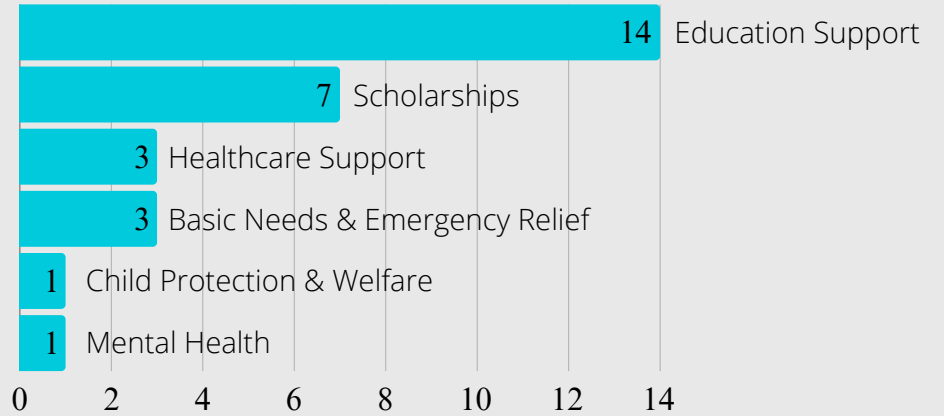
**THAILAND**

22 Projects



**CAMBODIA**

2 Projects



## ANNUAL PROJECT BUDGET



Thailand

**52,7%**

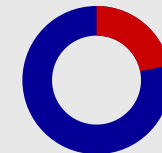
€156.349



Myanmar

**25,5%**

€75.556



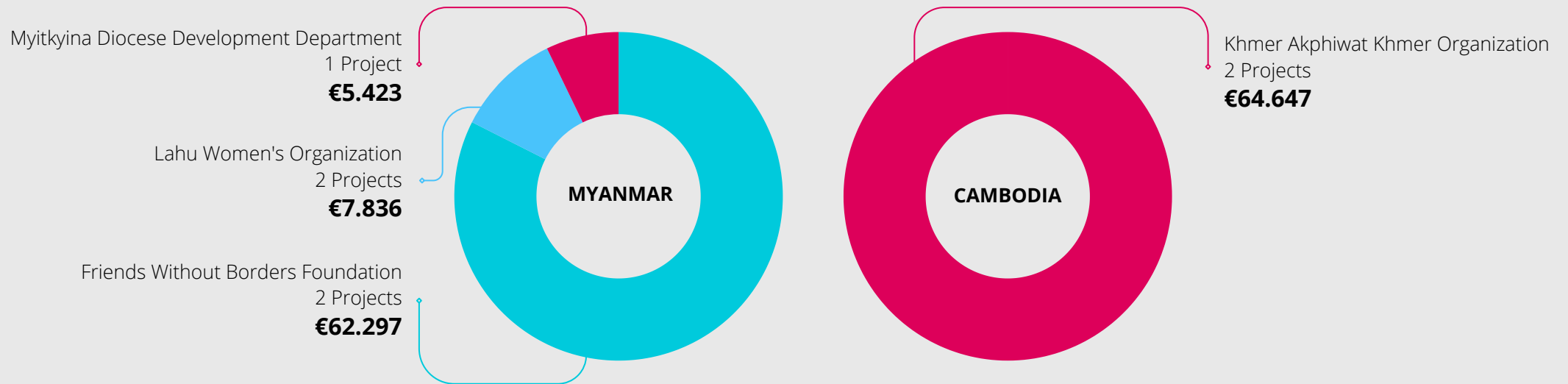
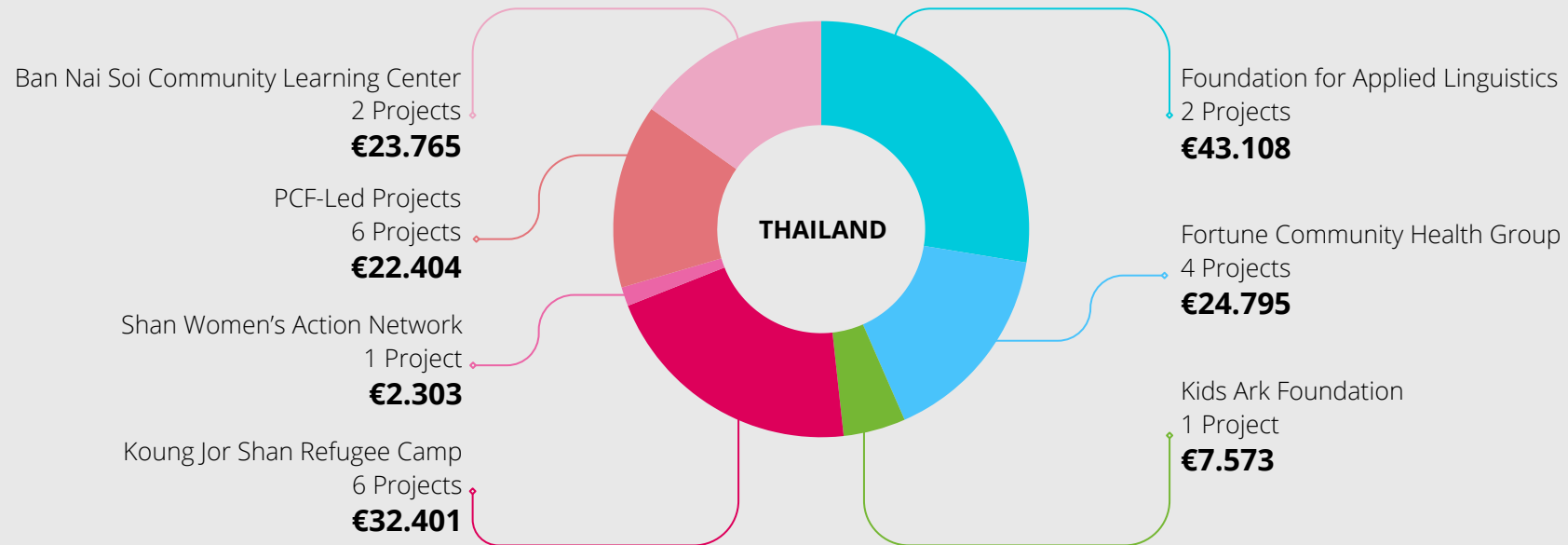
Cambodia

**21,8%**

€64.647

# PARTNERS

## Project Spending per Partner



Notes:

- Project personnel costs assigned proportionally

## MESSAGE FROM OUR SPONSORS

I am deeply honoured and immensely grateful for the opportunity to attend the Charity Gala Dinner hosted by Dutch Ambassador H. E. Mr. Remco & spouse, Mr. Carter.

This esteemed event not only allowed me to engage with the distinguished Philanthropy Connections Foundation but also to witness firsthand their unwavering dedication to transforming the lives of underprivileged students in Thailand through education.

Your impact of education on one's future cannot be overstated. It serves as a beacon of hope and a gateway to limitless possibilities, providing the tools necessary for an individual to craft a life of autonomy and brilliance. Your magnanimous support transcends mere financial assistance, empowering young minds to forge their own destinies and contribute positively to society.

The commitment to nurturing potential and fostering education is truly commendable and inspires a ripple effect of generosity and progress. Thank you for being a guiding light to those who need it most & include me as partially.

**With utmost gratitude and warmest regards,  
Patra Chirathivat**







## FINANCES

Consolidated statement of financial activities for the year ended 31 December 2024.

	EUR	EUR
<b>Total income</b>		<b>521.292</b>
Sponsor income	97.974	
Funding income	423.148	
Bank Interest	170	
<b>Total expenditure</b>		<b>480.142</b>
<b>Expenditure on objectives</b>		<b>350.087</b>
Project supported	305.312	
Personnel costs	32.951	
Travel and others related costs	1.809	
Allocated indirect costs	10.015	
<b>Expenditure as % of total income</b>		<b>73%</b>

	EUR	EUR
<b>Expenses on fundraising</b>		<b>54.381</b>
Information and publicity	6.809	
Personnel costs	37.109	
Travel and others related costs	3.786	
Allocated indirect costs	6.677	
<b>Expenditure as % of total income</b>		<b>11%</b>
<b>Management &amp; administration costs</b>		<b>75.674</b>
General costs	16.692	
Personnel costs	58.097	
Travel and others related costs	885	
<b>Expenditure as % of total income</b>		<b>16%</b>
<b>Results</b>		<b>41.150</b>
Result on exchange rate		1.822
Funds brought forward		101.795
<b>Funds carried forward</b>		<b>144.767</b>
Cash in Bank		100.022
Fixed Assets		21.681
Others Assets		23.065
Liabilities		122.022
<b>Total Assets and Liabilities</b>		<b>22.746</b>



# EXPENDITURE ON OBJECTIVES

EUR

## BNSCLC (Ban Nai Soi Community Learning Centre)

Food and Medicine	13.524
Teachers Salaries	10.241

## FAL (Foundation for Applied Linguistics)

Salaries and Support for Multi Lingual Education Programme	39.829
School Supplies	3.279

## FCHG (Fortune Community Health Group)

Loi Sam Sip IDP Camp School Support	20.427
Emergency Food Support	293
Migrants Healthcare	3.369
Mosquito Netting for Migrant Workers	706

## FWB (Friends Without Borders Foundation)

Capacity Building and Salaries for Karen Teachers and Schools (SchoolPower)	53.390
Humanitarian Aid for IDPs and Refugees	8.907

## KA (Kids Ark Foundation)

Scholarships for Basic and Higher Education	7.573
---	-------

## KAKO (Khmer Akphiwat Khmer Organization)

Preschools Support	33.846
64 Scholarships	30.801

## KJSRC (Koung Jor Shan Refugee Camp)

Boarding House	23.117
Teacher Stipends	7.778
Boarding House Bedding Sets	666
Mental Healthcare for One Child	569
Educational Support for Two Students	199





Textbooks for Evening Classes	72
<b>LWO (Lahu Women's Organization)</b>	
IDP Camp Medical Supplies	3.063
IDP Camp School Support	4.773
<b>MDDD (Myitkyina Diocese Development Department)</b>	
Capacity Building and Salaries for Teachers	5.423
<b>SWAN (Shan Women's Action Network)</b>	
Scholarship for Basic Education Programme	2.303
<b>PCF Emergency Flood Relief</b>	
Flood Relief Packages & Household Recovery Support	5.338
<b>PCF Scholarships Programme</b>	
Scholarships for 20 Students - Romphothi Foundation	2.399
Scholarships for 8 New Students - Higher Education	7.088
Scholarship for 1 student - Higher Education - Bodhivijjalaya College, Srinakharinwirot University (BCSWU)	805
Scholarship for 1 student - Higher Education - Chiang Mai Technical College	3.766
Scholarship for 1 student - Higher Education - Chiang Mai Rajabhat University	3.008
<b>KBSCF (Kurmia Budhi Santosa Charitable Fund)</b>	
Special Project - Food,Basic Income & Education	8.760
Personnel costs	32.951
Travel and accommodation expenses	1.809
Allocated indirect costs	10.015
<b>TOTAL</b>	<b>350.087</b>



9 August 2024

A	B	C	D
E	F	G	H
I	J	K	L
M	N	O	P
Q	R	S	T
U	V	W	X
Y	Z		

WAVE  
FUTURE  
An In-Lamp School



# NOTES ON THE CONSOLIDATED STATEMENT

## Accounting Policies Going Concern Assumption

The financial statements have been prepared on the going concern assumption. The financial year comprises the dates from 1st January to 31st December.

## Cash Based Accounting

The financial statements are prepared on a cash basis accounting method. Transactions and positions in the balance sheet are in multiple foreign currencies. Transactions in a foreign currency are exchanged at the date of the transaction. Foreign exchange gains and losses resulting from transactions in a foreign currency are accounted in the profit and loss statement. Monetary items in the balance sheet are exchanged on the balance sheet date, of 31st December.

## Payroll

Payroll costs are divided in three categories, Expenditure on Objectives, Expenditure on Own Fundraising, and Management and Administration costs.

## Exchange Rates

Two exchange rates have been used. For the profit and loss account the average exchange rate was 1 THB = 0,0264 EUR. The exchange rate used for the balance sheet to calculate liabilities and assets was 1 THB = 0,02672 EUR.

## Note on Consolidation

These consolidated statements eliminate all intercompany transactions between the Dutch and Thai entities. Funds transferred from the Dutch foundation to the Thai foundation are reported as an expense in the Dutch accounts and as income in the Thai accounts, but are eliminated in consolidation to avoid double-counting.

## Annual Board Meeting

The 2024 Financial Audit Report was discussed and approved by the Thai Board on 26 March 2025.

The 2024 Consolidated Financial Statements were discussed and approved by the Dutch Board on 12 June 2025.



# OUR BOARD



**CHAIRMAN**  
**SALLO POLAK**  
Founder & Executive Director

## THAI BOARD



**YING CHARM HOM**  
Treasurer



**BEN SVASTI THOMSON**  
Secretary



**DR. SAMAI SIRITHONGTHAWORN**  
Secretary  
(to October 2024)

## DUTCH BOARD



**CATHERINE KEYL**  
Board Member



**RENÉ MENDEL**  
**(In Loving Memory)**  
Treasurer



**ROB RIJNDERS**  
Secretary



**GERARD VERBERNE**  
Secretary  
(to September 2024)

## MEET OUR TEAM

Our committed team works closely with local partners in Thailand, Cambodia, and Myanmar to support grassroots projects.



**SALLO POLAK**  
Founder & Executive Director



**DJ ROBERTSON**  
Chief Operating Officer



**PAH PANITNANTANAKUL**  
Finance & Accounting Manager



**KRIST INMANEE (TON)**  
Teams Support Officer



**ADAM LAWRENCE**  
Monitoring & Evaluation Officer



**SATHIRAVIJA HEEBTHONG (EARTH)**  
Project Coordinator



**ZAW MOON RA (ARRA)**  
Communications Team Manager



**SARAWUT PENGSANNOO (O)**  
Communications Officer



**PHONG CHANGYUE**  
Social Media Officer



**KANYARAT PINYONITCHAKUL (KAN)**  
Administrative Officer



**PONG**  
Mae Baan



**JITKAMON LAWANTRAKOOL (NITE)**  
Project Coordinator



**SAISUDA POHL (ROSE)**  
Projects Team Manager



**MARK KEARNS**  
Communications and Strategy  
Manager

## ACTIVE VOLUNTEERS IN 2024

Our volunteers have enabled us to achieve a greater impact much faster than we ever thought possible. The growth we have achieved so far would not have been possible without them.

Here are all our permanent volunteers and those volunteers active in 2024.

We are deeply grateful to each and every one of them.

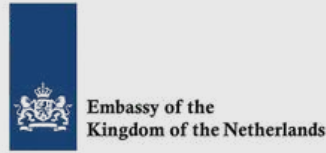
Name	Nationality	Volunteering Since
Adriënné Kranendonk	Dutch	Long Term Volunteer
Anna Pierrot	French	Long Term Volunteer
Anneke Magendans	Dutch	2024
Baramath Tookjit (Doi)	Thai	2024
Damian Doyle	Dutch	Long Term Volunteer
Dick Stevens	Dutch	Long Term Volunteer
Emma Shaw	England	2024
Ernst Daniel Nijboer	Dutch	2024
Fran and Bob German	USA	Long Term Volunteer
Joanne Nihom	Dutch	Long Term Volunteer
Jorn Mooij	Dutch	Long Term Volunteer
Stan Commissaris	Dutch	Long Term Volunteer
Weerasak Narakorn (Bay)	Thai	2024





# OUR SPONSORS AND SUPPORTERS







**René Mendel (1950 - 2025)**

## **IN LOVING MEMORY OF RENÉ MENDEL**

With profound sadness and deep gratitude, we honour the memory of René Mendel, our long-serving board member and treasurer, who passed away in May 2025.

René was instrumental in guiding Philanthropy Connections Foundation (PCF) from its inception in 2011. His tireless dedication, wisdom, and unwavering support significantly shaped our organisation's growth and direction. René's contributions went far beyond his role as Treasurer; he was a trusted advisor, compassionate advocate, and above all, a dear friend.

Professionally, René was a dynamic communicator and the visionary behind Interakt, creating meaningful cultural and educational media productions that resonated far beyond his native Netherlands. His legacy is marked by countless projects that inspired dialogue, awareness, and change worldwide.

René's commitment to social justice, passion for innovation, and ability to connect deeply with people defined his life and his work. As our board member, he often said, "You should be glad to have me, I won't get in your way," reflecting both his humility and his candid, no-nonsense style. René provided essential counsel during both calm periods and challenging times, always remaining direct, honest, and supportive.

His passing is deeply felt by his family, friends, colleagues, and all of us at PCF, whose lives he enriched. We will profoundly miss his sharp insights, vibrant energy, and sincere friendship.

René, your legacy and spirit remain woven into the fabric of our mission. Rest peacefully, dear friend.

**Your friends at Philanthropy Connections Foundation**

He was there for our foundation, in calm waters and heavy storms. Honest, direct, and always with his heart in the right place.

Support Our Work



philanthropyconnections.org



RSIN / Tax Number  
(NL): 851226784

Mailing Address:  
Revaleiland 486  
1014 ZG Amsterdam  
The Netherlands

philanthropyconnections.org  
info@philanthropyconnections.org

Office Address:  
62 Wongwaen Road  
Chang Phueak, Mueang, Chiang Mai 50300  
Thailand

tel. +66 (0) 52 005 779