



Sun Medical Supplies

Your Source for Healthcare Products

DME PRODUCTS CATALOG AND REFERRAL GUIDE



www.sunmedicalsupsplies.com

CONTACT US



Sun Medical Supplies
Your Source for Healthcare Products
NPI # 1184716672

Sun Medical Supplies is a fully accredited Durable Medical Equipment (DME) provider based in Redlands, CA since 2003. Our team of experienced customer service representatives, delivery technicians and billing specialists are committed to patient satisfaction and excellent customer service. We service the Inland Empire and surrounding communities with quality home health equipment and supplies through a growing number of healthcare plans including; **MEDICARE, IEHP DIRECT, MEDI-CAL, MOLINA DIRECT**, and many other other health plans. We are here to help your office provide the appropriate equipment & supplies for your patients' needs.

Office Hours (Pacific)

Mon-Fri 9:00am to 6:00pm

Toll Free

1-877-4-SunMed (option 1)

Local

(909) 577-1211

Fax

(909) 307-8099

EMAIL

DME@sunmedsupplies.com

Website

www.sunmedsupplies.com

Corporate Headquarters

1915 W. Redlands Blvd. #101
Redlands, CA 92373



We are fully prepared to provide home care patients with a complete line of Medical Equipment & Supplies

- Pain Management Devices
- Bathroom Safety Equipment
- Orthopedic Supports
- Mobility Assist Devices
- Patient Care Products
- Power Mobility Devices
- Incontinence Supplies
- Other Healthcare Products



Items in catalog may be substituted for same or similar item(s)
HCPC codes and item(s) based on plan coverage and subject to change

QUICK REFERENCE



Sun Medical Supplies
Your Source for Healthcare Products
NPI # 1184716672

BP Monitor (wrist)	HCPC: A4670	QTY: 1	Pg # 2
Pulse Oximeter	HCPC: E0445	QTY: 1	Pg # 2
TENS UNIT	HCPC: E0730	QTY: 1	Pg # 3
TENS Electrode supplies	HCPC: A4595	QTY: 2	Pg # 3
Cervical collar	HCPC: L0180	QTY: 1	Pg # 4
LSO Back Braces	HCPC: L0650	QTY: 1	Pg # 5
TLSO Back Braces	HCPC: L0457	QTY: 1	Pg # 5
Scoliosis Brace	HCPC: L1005	QTY: 1	Pg # 6
Wrist Brace	HCPC: L3908	QTY: 1	Pg # 7
Wrist Brace w/Thumb	HCPC: L3809	QTY: 1	Pg # 7
Shoulder Recover Bracing	HCPC: L3670	QTY: 1	Pg # 8
Shoulder Abduction Bracing	HCPC: L3960	QTY: 1	Pg # 8
ROM Hinged Knee Brace	HCPC: L1833 & L2810	QTY: SEE PAGE	Pg # 9
ROM Hinged Knee Brace Conylar pads	HCPC: L2810	QTY: 2	Pg # 9
OA Unloader Knee Brace	HCPC: L1851	QTY: 1	Pg # 9
Hinged Ankle Brace	HCPC: L1971	QTY: 1	Pg # 10
CAM Boot	HCPC: L4361	QTY: 1	Pg # 10
Compression Socks	HCPC: A6549	QTY: 6	Pg # 11
Compression Wraps	HCPC: A6545	QTY: 6	Pg # 12
Diabetic Shoes	HCPC: A5500	QTY: 1	Pg # 13
Diabetic Shoe Inserts	HCPC: A5512	QTY: 6	Pg # 13
Shower Seat	HCPC:E0240	QTY: 1	Pg # 14
Toilet Riser	HCPC:E0244	QTY: 1	Pg # 14
3-in-1 Commode	HCPC: E0163	QTY: 2	Pg # 14
Walker with Wheels	HCPC: E0143	QTY: 1	Pg # 15
Rollator Walker with Seat	HCPC: E0143 & E0156	QTY: SEE PAGE	Pg # 15
Knee Scooter	HCPC: E0118	QTY: 1	Pg # 16
Walking Aids	HCPC:SEE PAGE	QTY: SEE PAGE	Pg # 17
Hospital Bed & Accessories	HCPC: SEE PAGE	QTY: SEE PAGE	Pg # 18
Bariatric HD Items	HCPC: SEE PAGE	QTY: SEE PAGE	Pg # 19
Wheelchair Standard	HCPC: SEE PAGE	QTY: SEE PAGE	Pg # 20
Wheelchair Lightweight	HCPC: SEE PAGE	QTY: SEE PAGE	Pg # 21
Wheelchair Ultra Lightweight	HCPC: SEE PAGE	QTY: SEE PAGE	Pg # 22
Wheelchairs Heavy Duty	HCPC: SEE PAGE	QTY: SEE PAGE	Pg # 23
Wheelchair Tilt-in-Space	HCPC: SEE PAGE	QTY: SEE PAGE	Pg # 24
Mobility Scooter	HCPC: SEE PAGE	QTY: SEE PAGE	Pg # 25
Travel Scooter	HCPC: SEE PAGE	QTY: SEE PAGE	Pg # 25
Power Wheelchair	HCPC: SEE PAGE	QTY: SEE PAGE	Pg # 26
Access Ramps	HCPC: SEE PAGE	QTY: SEE PAGE	Pg # 26
Complex Rehab Powerchairs	HCPC: SEE PAGE	QTY: SEE PAGE	Pg # 27
OBGYN Products	HCPC: SEE PAGE	QTY: SEE PAGE	Pg # 28
Incontinence Supplies	HCPC: SEE PAGE	QTY: SEE PAGE	Pg # 29
Colostomy Supplies	HCPC: SEE PAGE	QTY: SEE PAGE	Pg # 30
Nephrostomy Supplies	HCPC: SEE PAGE	QTY: SEE PAGE	Pg # 31
HCPC CODES(Incontinence/Urological)	HCPC: SEE PAGE	QTY: SEE PAGE	Pg # 32
HCPC CODES (Ostomy Supplies)	HCPC: SEE PAGE	QTY: SEE PAGE	Pg # 33

PULSE OXIMETER

Digital Fingertip Pulse Oximeter with LCD Screen



Sun Medical Supplies
Your Source for Healthcare Products
NPI # 1184716672

TO ORDER USE HCPC CODE:

**FINGERTIP PULSE OXIMETER
E0445 QT:1**

Effective Home Monitoring

Key Features:

Fingertip measurement of SpO2% (oxygen saturation) and pulse rate

Measures quickly and accurately

Up to 30 hours of continuous use

Lightweight and compact design

Low power consumption with auto shut-off feature

LED display screen can display information in two directions



WRIST BLOOD PRESSURE MONITOR



DUAL USERS SUPPORTED

👤 120 Reading Records ↔ 👤 120 Reading Records
switch the user data by the MEM button



TO ORDER USE HCPC CODE :

**WRIST BP MONITOR
A4670 QT:1**



Easy to use

Wear the cuff on the left wrist

Keep the monitor at the heart level

Press the START button

TENS UNIT

Dual channel TENS Unit
(Transcutaneous electrical nerve stimulator)



Sun Medical Supplies
Your Source for Healthcare Products
NPI # 1184716672

TO ORDER USE HCPC CODE:

TENS UNIT	E0730	QT:1
ELECTRODES	A4595	QT:2

Product Features:

- High tech design with extra-large LCD display
- 6 Therapeutic body part buttons available
- Preset body programs or user defined modes option
- Fully programmable treatment timer
- Rechargeable 3.7V Lithium Ion Battery
- Portable design for on-the-go patients
- Electrode Load Indicator
- Compliance Meter



Ask about EMS units also available



MULTI-POST COLLAR

Adjustable Multi-Post Cervical Collar



Sun Medical Supplies
Your Source for Healthcare Products
NPI # 1184716672

TO ORDER USE HCPC CODE:
Multi-Post Collar L0180 QT: 1



Pivoting Occipital Panels Reduce Pressure

Padded panels pivot bilaterally and self-adjust to cradle almost all head shapes for increased support and to help maximize patient comfort. Reduced patient contact on occipital midline helps limit pressure points and heat buildup in areas prone to skin break down.



Increased Visibility for Improved Care

Innovative design permits greater visibility, enhancing the ability to inspect the skin without removing the collar.

Easily Steps Up to Support Patients' Condition

If additional motion restriction is required, both the Vista CTO and Vista CTO4 Upgrade Kits attach easily to the Vista Multi-Post

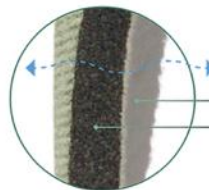


Fully Adjustable for the Perfect Fit

Height adjustment technology in both the front and back allows clinicians to effectively fit individual anatomies and multiple conditions.

Promotes Effective Skin Care

Cotton-lined Aspen pads wick moisture from patient's skin while clickable polyurethane foam helps ensure optimal pressure distribution



Airflow

Cotton Lining
Polyurethane Foam



LUMBAR SUPPORT

LSO Lumbar Sacral Orthosis with Lateral Support



Sun Medical Supplies
Your Source for Healthcare Products
NPI # 1184716672

TO ORDER USE
HCPC CODE:
**LSO BACK BRACE
L0650 QT: 1**



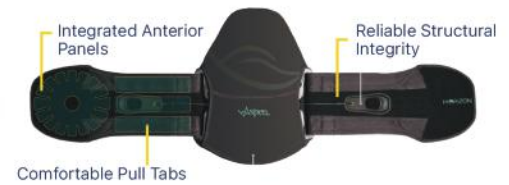
One Size Adjustable
28-64"

Effective Independent Compression

Aspen's patented 4:1 mechanically advantaged tightening system independently tightens top and bottom allowing patients to localize compression where they need it for maximum pain relief.

Custom Support

When tightened, firm but flexible back panel naturally conforms to the patient's lordosis to provide true structural support.



THORACIC SUPPORT

TLSO Thoracic Lumbar Sacral Orthosis with Lateral Support

TO ORDER USE HCPC CODE:
**TLSO BACK BRACE
L0457 QT: 1**



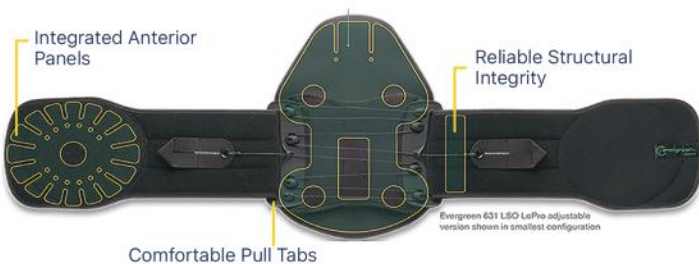
Custom Support

When tightening, firm but flexible back panel naturally conforms to the patient's lordosis to provide true structural support.

A Height for Every Body

Telescoping shoulder straps on the Horizon 456 provide 13 inches of height adjustment to effectively fit even the tallest patients. This, along with circumferential adjustability, enables the right fit for every body.

One Size Adjustable
28-64"



SCOLIOSIS BRACING SYSTEM

Scoliosis Three Point Unloader Bracing System



Sun Medical Supplies
Your Source for Healthcare Products
NPI # 1184716672

TO ORDER USE HCPC CODE:
SCOLIOSIS BRACE L1005 QT: 1



Providing Pain Relief for Adults with Scoliosis

The Peak Scoliosis Bracing System acts as an unloader brace for the spine. Force is applied to the patient by the thoracic and trochanter pads on one side and by the belt, with or without the lateral pad, on the other side. The applied forces work together to promote better alignment and reduce body lean.

Anterior & Posterior Tension Straps
Adjust to increase force applied by the Universal Strut Assembly.

Chest Strut
When needed, limits rotation and kyphosis.

Adjustable Thoracic Pad
Hinges and flexes for optimal thoracic fit.



Ergonomically Designed Molded Pull Tabs
Easy to locate by feel and designed for a comfortable pull.

Adjustable Trochanter Pad
Pivoting feature maximizes patient fit and comfort with minimal adjustment.

Malleable Aluminum Strut
Customizable by bending or twisting to accommodate varying patient anatomies.

Easy to locate by feel and designed for a comfortable pull.

Adjustable Thoracic Pad
Hinges and flexes for optimal thoracic fit.

Iliac Pad
Prevents brace migration, and provides a landmark for patients to easily don and doff.

Adjustable Trochanter Pad
Pivoting feature maximizes patient fit and comfort with minimal adjustment.



Chest Strut
When needed, limits rotation and kyphosis.

Comfortable Fabric
Breathable and moisture wicking fabrics ideal for long term wear.

Malleable Aluminum Strut
Customizable by bending or twisting to accommodate varying patient anatomies.

WRIST SUPPORTS

Effective support for Wrist Injuries or Pain



Sun Medical Supplies
Your Source for Healthcare Products
NPI # 1184716672

TO ORDER USE HCPC CODE:

WRIST BRACE	L3908	QT:1
WRIST/THUMB	L3809	QT:1

Formfit Wrist & Thumb

Formfit Universal Wrist and Thumb products are designed to restrict motion of the wrist and the thumb. Providing immobilization of the wrist and thumb makes the product ideal during the rehabilitation and healing of injuries to the wrist and thumb, for conditions like immobilization and protection from select soft tissue injuries.

FORMFIT UNIVERSAL WRIST

WRIST BRACE **L3908** **QT:1**



FORMFIT UNIVERSAL THUMB SPICA

WRIST/THUMB **L3809** **QT:1**

Key Features:

- Breathable material
- Quick-pull close strap
- Positional dorsal stay
- Malleable palmar stay

SHOULDER BRACING SYSTEMS

Shoulder Slings, Immobilizers & Abduction Systems



Sun Medical Supplies
Your Source for Healthcare Products
NPI # 1184716672

RECOVERY SHOULDER SYSTEM



Indications

Shoulder dislocations, injuries or instabilities.

Key Features:

- Universal size, left or right
- Quick release buckle
- Breathable mesh material
- Extra padding around the neck for increased comfort
- Thumb rest to reduce migration

TO ORDER USE HCPC CODE:

RECOVERY SHOULDER L3670 QT: 1

DELUXE SHOULDER ABDUCTION SYSTEM



Indications

- Post-operative rotator cuff, elbow and shoulder injuries
- Rotator cuff tear and tendinitis at the shoulder
- Adhesive capsulitis at the shoulder (frozen shoulder)
- Cumulative trauma/repetitive strain injury
- Elbow fractures including radial head
- Stroke and CVA recovery and residual hemiparesis

Key Features:

- Lightweight, universally-sized
- Removable wedge allows shoulder position at 0, 15, 30, 60 and 90 degrees
- Strapping systems allows abductor to be worn on the left or right arm with minimal adjustment

TO ORDER USE HCPC CODE:

DELUXE ABDUCTION L3960 QT: 1

HINGED KNEE BRACE

R.O.M (range of motion) Hinged Knee Brace



Sun Medical Supplies
Your Source for Healthcare Products
NPI # 1184716672

TO ORDER USE HCPC CODE:

ROM KNEE BRACE	L1833	QT:1
CONDYLAR PADS	L2810	QT:2

DESIGNED TO PROVIDE SUPPORT, STABILIZATION AND COMPRESSION FOR LIGAMENT INSTABILITIES AND INJURIES.

Examples of Use:

Most ACL, PCL, MCL strains, injuries and instabilities.

Meniscal injuries

Mild OA

Adjustable flexion and extension



Wrap-around moisture-wicking breathable material



OA UNLOADER BRACE

Medial or Lateral unloading single upright Knee Brace

TO ORDER USE HCPC CODE:

OA UNLOADER KNEE BRACE L1851 QT: 1

Offers Superior Relief for Osteoarthritic Pain

Key Features:

Superior offloading

OA knee pain relief

Highly functional

Lightweight Frame

Low Profile Design

Medical or Lateral Unloading

Improved push button release for easy on and off!



Foot & Ankle

Orthopedic Foot Supports & Bracing



Sun Medical Supplies
Your Source for Healthcare Products
NPI # 1184716672

TO ORDER :
USE HCPC CODE(S) FOR
CORRESPONDING ITEM(S)



**Lace-up
Ankle Support**
L1906



**Hinged
Ankle Brace**
L1971



Ankle Stirrup
L4350



**Post-op
Recovery Shoe**
L3260



**Plantar Fasciitis
Night Splint**
L4397



**Air Walker
Cam Boot**
L4361

COMPRESSION STOCKINGS

20-30 mmhg compression Knee High or Thigh High Socks & Stockings



Sun Medical Supplies
Your Source for Healthcare Products
NPI # 1184716672



TO ORDER USE HCPC CODE:
COMPRESSION STOCKING A6549 QT: 6
(3 pairs)

Functional, effective and opaque stockings for perfectly fitting basic care. It is ideal for both women and men. Available in two colors and the models calf sock, thigh stocking and pantyhose. All models are available with open and closed toe.

Indications

- Mild to moderate spider veins
- Slight to severe varicose veins
- Mild to moderate edema
- Tired, achy, heavy legs
- Helps prevent Deep Vein Thrombosis (DVT)

Step 1: Measuring Instructions



1 Ankle circumference directly above ankle bone



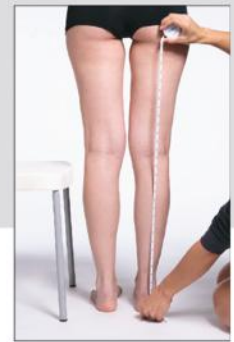
2 Calf circumference at fullest part of the calf



3 Calf length from the floor to the fibular head



4 Widest circumference of the thigh



5 Leg length from the floor up to the gluteal fold

Sizing Chart

Women's shoe sizes	Men's shoe sizes
Short 5.5 - 9.5	Short 7 - 11
Long 8 - 12	Long 9.5 - 14

(Specify Knee High or Thigh High in order notes)

Ankle Circumference	small 7" - 8.5" (18-21.5cm)		medium 8.5" - 10" (21.5-25.5cm)		large 10" - 11.5" (25.5-29cm)		x-large 11.5" - 13" (29-33cm)	
Calf Circumference	small 11" - 15.5" (28-39cm)		medium 12.5" - 17.5" 31.5-45cm)		large 14" - 20" (35.5-51cm)		x-large 16" - 23" (40.5-58cm)	
Calf Length	short ≤16" (41cm)	long >16" (41cm)	short ≤16" (41cm)	long >16" (41cm)	short ≤16" (41cm)	long >16" (41cm)	short ≤16" (41cm)	long >16" (41cm)
Thigh Circumference	small 18" - 26" (28-39cm)		medium 19" - 28.5" 31.5-45cm)		large 20.5" - 33" (35.5-51cm)		x-large 24" - 36" (40.5-58cm)	
Leg Length	short ≤28.5" (72cm)	long >28.5" (72cm)	short ≤28.5" (72cm)	long >28.5" (72cm)	short ≤28.5" (72cm)	long >28.5" (72cm)	short ≤28.5" (72cm)	long >28.5" (72cm)
Size	SS	SL	MS	ML	LS	LL	XS	XL

COMPRESSION WRAP

Adjustable Compression Wrap System



Sun Medical Supplies
Your Source for Healthcare Products
NPI # 1184716672

TO ORDER USE HCPC CODE:
COMPRESSION WRAP A6545 QT: 6



Juzo Compression Wrap
Medical Compression

Key Features:

- Reversible Design
- Alternative Bandage
- Easy Pull on Tab
- Gap Free Notch
- Short Stretch



Freedom in Motion



Easy Pull Tab



High Working Pressure

DIABETIC SHOES

Athletic and Casual Style Diabetic Footwear



Sun Medical Supplies
Your Source for Healthcare Products
NPI # 1184716672



OrthoFeet®



The ultimate **support & cushioning** with the **#1** podiatrist approved shoes by ORTHOFEET

TO ORDER USE HCPC CODE:

DIABETIC SHOES	A5500	QT: 2
DIABETIC INSERTS	A5512	QT: 6

SHOWER SEAT

Shower Seat, Shower Stool or Shower Bench



Sun Medical Supplies
Your Source for Healthcare Products
NPI # 1184716672



Key Features:

- Easy, tool-free assembly of back, seat, and legs
- Lightweight, corrosion proof aluminum frame
- Adjustable height legs in 1" increments
- Angled legs with suction-style tips for stability

TOILET RISER

Adjustable 5" Toilet Riser with Arms



TO ORDER USE HCPC CODE:

BATH CHAIR	E0240	QT: 1
TOILET RISER	E0244	QT: 1
COMMUNE CHAIR	E0163	QT: 1

Easy to Install

Install in minutes with provided hardware
No tools necessary!

**Adjustable base to fit
standard & elongated toilets**

3 in 1 COMMUNE

Lightweight folding 3 in 1 commune chair



Key Features:

- Folding steel frame commune with 7.5 QT Bucket
- 3-in-1 design for use as a bedside commune, raised toilet seat or toilet safety frame
- Gray, powder-coated, steel-welded durable construction



Strength and durability to support up to 350lbs

Plastic armrests add comfort and support for patient

**Lightweight, easily opens, and folds flat
for convenient storage and travel**

ROLLING WALKERS

Front Wheel Walker & Rollators



Sun Medical Supplies
Your Source for Healthcare Products
NPI # 1184716672

TO ORDER USE HCPC CODE:

WALKER E0143 QT: 1



Front Wheel Walker

Easy push-button release mechanisms

Each side operates independently to allow easy movement through narrow spaces and greater stability while standing

Durable, aluminum frame (red or blue)

Tool free height adjustment

Sturdy 1" diameter construction ensures maximum strength

TO ORDER USE HCPC CODE:

WALKER E0143 QT: 1
SEAT E0156 QT: 1

Four Wheel Walker with Seat & Brakes

6" casters are ideal for indoor/outdoor use

Deluxe dual braking system

Durable, aluminum frame (red or blue)

Tool free height adjustment

Padded seat and back support

Removable under-seat storage bag

300lb weight capacity



KNEE SCOOTER

Adjustable Height Knee Scooter



Sun Medical Supplies
Your Source for Healthcare Products
NPI # 1184716672

TO ORDER USE HCPC CODE:
CRUTCH SUBSTITUTE E0118 QT: 1



Ideal for individuals recovering from foot surgery, breaks, sprains, amputation and ulcers of the foot.

Key Features:

- 8" non-marking solid wheels
- Deluxe easy braking system
- Durable lightweight steel frame
- Tool-free height adjustment
- Folding tiller for easy transportation
- New, two-piece comfort leg pad
- Removable front basket
- 300lbs weight capacity

WALKING AIDS

Patient Stability and Walking Assist Devices



Sun Medical Supplies
Your Source for Healthcare Products
NPI # 1184716672



CANE E0100



QUAD CANE E0105



HEMI WALKER E0135



CRUTCHES E0114



FOREARM CRUTCH E0110



WALKER PLATFORM E0135

PATIENT ROOM

Hospital Bed & Accessories



Sun Medical Supplies
Your Source for Healthcare Products
NPI # 1184716672



SEMI-ELECTRIC BED E0295 QT:1
SIDE RAILS E0310 QT:1
INNERSPRING MATTRESS E0271 QT:1

ALTERNATING PRESSURE MATTRESS

E0181 QT:1



OVERBED TABLE
E0274 QT:1

TRAPEAZE BAR SET

E0910 QT:1

IV POLE
E0776 QT:1



PATIENT LIFTER

Hydraulic Patient Lifter and Sling



TO ORDER USE HCPC CODE:

HYDRAULIC PATIENT LIFT E0630 QT:1

PATIENT SLING FOR LIFT E0621 QT:1

Silver Vein steel construction

6 point Swivel Bar that can accommodate 2 or 4 sling straps plus 2 chain connections
High-performance hydraulics raise or lower individual gradually and safely from any stationary position.



BARIATRIC ITEMS

Additional Bariatric DME Items Available Upon Request



Sun Medical Supplies
Your Source for Healthcare Products
NPI # 1184716672

**TO ORDER:
USE HCPC CODE(S) FOR
CORRESPONDING ITEM(S)**



**Heavy duty
Rollator Walker**
E0149, E0156



**Heavy duty
Transfer Bench**
E0248



**Heavy duty
Wheelchair**
K0006



**Heavy duty
Commode**
E0168



**Heavy duty
wheelchair Cushions**
Back E2604
Seat E2614



**Heavy duty
Power Wheelchair**
K0824 Qt:1
E2365 Qt:2

K1 WHEELCHAIR SET

Standard Manual Wheelchair with Accessories



Sun Medical Supplies
Your Source for Healthcare Products
NPI # 1184716672



Weighs under 38 lbs (excluding front riggings)

Easy to clean powder coated silver vein steel frame

Padded fixed armrests

Nylon upholstery is durable, lightweight, attractive and easy-to-clean

Polyurethane tires mounted on composite wheels provide durability and low maintenance

Comes with push-to-lock wheel locks

Comes with swing-away footrests

Weight Capacity: 250 lb

For users up to 250lbs
(for users above 300lbs
Order bariatric wheelchair **K0006**)

TO ORDER USE HCPC CODE:

STANDARD WHEELCHAIR	K0001	QT: 1
SKIN PROTECT SEAT CUSHION	E2603	QT: 1
ELEVATING LEG-RESTS	K0195	QT: 2
GENERAL USE BACK CUSHION	E2611	QT: 1
SAFETY BELT	E0978	QT: 1

TRANSPORT CHAIR

Compact Portable Companion Wheelchair

Ultra-lightweight aluminum frame is easy to carry, making transport and storage a breeze



Weighs under 20 lbs

Aluminum frame for lightweight strength and durability

Easy folding and storage in closet or trunk

Composite wheels are lightweight and maintenance free

Flared arms allow the back to be folded virtually flat

Soft, plush nylon upholstery

Weight Capacity: 300lbs

TO ORDER USE HCPC CODE:

TRANSPORT WHEELCHAIR	E1038	QT: 1
SKIN PROTECT SEAT CUSHION	E2603	QT: 1
GENERAL USE BACK CUSHION	E2611	QT: 1

K3 WHEELCHAIR SET

Lightweight Manual Wheelchair with Accessories



Sun Medical Supplies
Your Source for Healthcare Products
NPI # 1184716672



Back Cushion



Gel Seat Cushion

For users up to 300lbs

(for users above 300lbs
Order bariatric wheelchair **K0006**)

TO ORDER USE HCPC CODE:

LIGHTWEIGHT WHEELCHAIR	K0003	QT: 1
SKIN PROTECT SEAT CUSHION	E2603	QT: 1
ELEVATING LEG-RESTS	K0195	QT: 2
GENERAL USE BACK CUSHION	E2611	QT: 1
SAFETY BELT	E0978	QT: 1

Weighs under 36lbs (excluding front riggings)

Built-in seat rail extensions and extendable upholstery easily adjust seat depth from 16" to 18"

Carbon steel frame with silver vein finish

Removable flip-back arms allow for easy transfer

Nylon upholstery is durable, lightweight, attractive and easy-to-clean

Composite, mag-style wheels are lightweight and maintenance free

Dual axle provides easy transition of seat height to hemi-level

8" front adjustable casters are rmrests provide additional comfort

Comes with swing-away footrests or elevating leg rests with tool-free adjustable length riggings

K5 WHEELCHAIR SET

Ultra Lightweight Manual Wheelchair with Accessories



Sun Medical Supplies
Your Source for Healthcare Products
NPI # 1184716672



Back Cushion



Gel Seat Cushion

For users up to 300lbs

(For users above **300lbs**
order bariatric wheelchair **K0006**)

Key Features:

Ultra lightweight aluminum frame

Flip-back, padded, height adjustable desk arms provides added patient comfort

Comes with push to lock wheel locks

Treaded tires

Quick release axles

Dual axle positions

Precision sealed wheel bearings in front and rear ensure long lasting performance and reliability

Adjustable seat depth from 16" - 18"

Rear anti-tippers come standard

TO ORDER USE HCPC CODES:

ULTRA LIGHT WEIGHT CHAIR	K0005	QT: 1
SKIN PROTECT SEAT CUSHION	E2603	QT: 1
ELEVATING LEG-RESTS	K0195	QT: 2
GENERAL USE BACK CUSHION	E2611	QT: 1
SAFETY BELT	E0978	QT: 1
ADJUSTABLE ARMS	E0193	QT: 2

HD WHEELCHAIR SET

Heavy Duty Manual Wheelchair with Accessories



Sun Medical Supplies
Your Source for Healthcare Products
NPI # 1184716672

TO ORDER USE HCPC CODE:

HD BARIATRIC WHEELCHAIR	K0006	QT: 1
HD SEAT CUSHION	E2604	QT: 1
ELEVATING LEG-RESTS	K0195	QT: 2
HD BACK CUSHION	E2614	QT: 1
SAFETY BELT	E0978	QT: 1



Weight Capacity: 450 lbs

Carbon Steel frame with powder-coated silver vein, chip-proof, maintainable finish

Double embossed vinyl upholstery is durable, lightweight, attractive and easy-to-clean

Standard dual axle provides easy transition of seat height to hemi-level

Polyurethane tires mounted on composite wheels provide durability and low maintenance

8" front casters, adjustable in three positions
Maintenance free, sealed, precision bearings

Padded armrests provide additional comfort
Comes with swing-away footrests or elevating leg rests with tool-free adjustable length riggings

Aluminum foot plates
Comes with push-to-lock wheel lock



Back Cushion



Gel Seat Cushion

For users over 250lbs

TILT-IN-SPACE WHEELCHAIR

Manual Tilt Wheelchair with Intelligent Rotation in Space



Sun Medical Supplies
Your Source for Healthcare Products
NPI # 1184716672

TO ORDER USE HCPC CODE:

TILT-IN-SPACE CHAIR	E1161	QT: 1
SEAT CUSHION	E2623	QT: 1
BACK CUSHION	E2613	QT: 1
HEADREST	E0955	QT: 1
ELEVATING LEG REST	K0195	QT: 1
SEAT BELT	E0978	QT: 1
ANTI TIPPERS	E0971	QT: 1



Tilt-in-Space

Hip angle stays the same



Recline

Hip angle changes



MOBILITY SCOOTER

Full Size Mobility Scooter



Sun Medical Supplies
Your Source for Healthcare Products
NPI # 1184716672

Approved for users weighing
over 300lbs

Key Features:

- 400lbs weight capacity
- Extended range batteries
- 3 wheel configuration
- Feather-touch disassembly
- Delta tiller with wraparound handles
- Easy-to-read LED battery meter
- 10" flat-free, non-scuffing, tires
- Easy-grip tiller adjustment knob
- Easy tiller-mounted charger port
- Standard large front basket



ACCESS RAMP AVAILABLE

TO ORDER USE HCPC CODE:

MOBILITY SCOOTER	K0807	QT:1
BATTERIES	E2365	QT:2

ADD ON HOME ACCESS RAMP HCPC CODE:		
ACCESS RAMP	E1399	QT:1

TRAVEL SCOOTER

3 Wheel or 4 Wheel Portable Mobility Scooter

Key Features:

- Feather-touch disassembly
- Comfortable seating
- Modern aesthetic
- Portable design for transportation
- 3 or 4 wheel scooter options
- 300lb weight capacity
- Solid flat-free tires
- Adjustable seat height
- Adjustable tiller
- Storage basket
- 10 miles of range



Simple frame separation with only one hand
easily disassembles unit into five lightweight
pieces for convenient transport and storage

TO ORDER USE HCPC CODE:

TRAVEL SCOOTER	K0806	QT:1
----------------	-------	------

MOBILITY POWERCHAIR

Full Size Deluxe Mobility Powerchair



Sun Medical Supplies
Your Source for Healthcare Products
NPI # 1184716672



ACCESS RAMP AVAILABLE

Key Features:

- 300lb weight capacity
- Extended range batteries
- Deluxe captain chair
- 24" turning radius
- 4mph operating speed
- Universal left or right joystick

TO ORDER USE HCPC CODES:

DELUXE POWERCHAIR K0823 QT: 1

MOBILITY BATTERIES E2365 QT: 2

ADD ON HOME ACCESS RAMP HCPC CODE:

ACCESS RAMP E1399 QT: 1

TRAVEL POWERCHAIR

Compact Portable Mobility Powerchair

Key Features:

- Weight Capacity: 300 lbs
- Heaviest piece under 40lbs
- Quick release frame breakdown
- Compact padded swivel seat
- 9 mile operating range
- Gc3 controller with quick disconnect



Color: Black



TRAVEL
MADE IN MEXICO

TO ORDER USE HCPC CODE:

TRAVEL POWERCHAIR K0821 QT: 1

Simple frame separation with only one hand easily disassembles unit into five lightweight pieces for convenient transport and storage

COMPLEX REHAB

Group 2 Rehab & Group 3 Rehab Chairs



Sun Medical Supplies

Your Source for Healthcare Products

NPI # 1184716672

TO ORDER USE HCPC CODE:

POWER CHAIR	K0861	QT:1
HD REHAB CHAIR	K0850	QT:1



Our team of mobility specialists will help configure the appropriate chair for your patients needs

OB/GYN DME ITEMS

For OB/GYN PATIENTS



Sun Medical Supplies
Your Source for Healthcare Products
NPI # 1184716672



Maternity Belt

HCPC: L0621 QT:1



Compression Stockings

HCPC: A6549 QT:6



Digital Scale

HCPC: E1639 QT:1



BP Monitor

HCPC: A4670 QT:1



Pulse OX

HCPC: E0445 QT:1



Milk Storage Bags

Call for Details



Breast Pump

HCPC: E0603 QT:1



Bili Blanket

HCPC: E0202 QT:1

INCONTINENCE SUPPLIES

HCPC codes for Additional Items



Sun Medical Supplies
Your Source for Healthcare Products
NPI # 1184716672



Briefs

X-Large	T4524
Large	T4523
Medium	T4522
Small	T4521



Pull-on

X-Large	T4528
Large	T4527
Medium	T4526
Small	T4525



Under Pads

T4541



Bladder Pads

Male	T4535
Female	T4535



Washable Pads

T4537



Fungal Cream

A6250



Skin Cleanser

A9286



Vinyl Gloves

A4927

See Spreadsheet in Back of Catalog for Additional HCPC Codes.



Ask your rep about samples



COLOSTOMY SUPPLIES

Barriers, Pouches, Pastes, Wipes & Accessories



Sun Medical Supplies

Your Source for Healthcare Products

NPI # 1184716672

TO ORDER:
SEE SPREADSHEET IN BACK OF CATALOG
FOR HCPC CODES



NEPHROSTOMY SUPPLIES

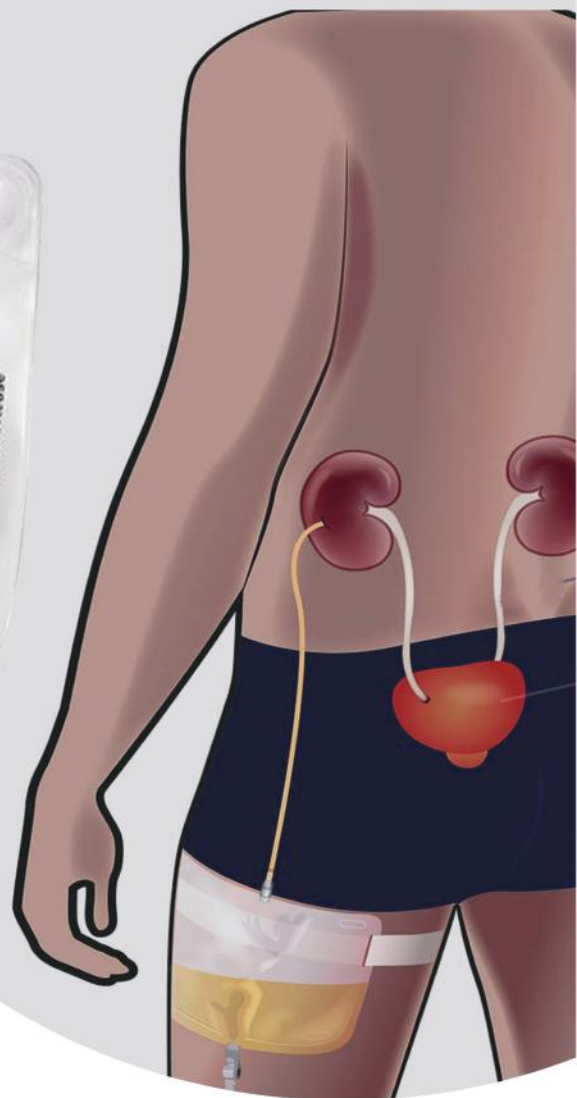
Monthly Supply Home Delivery



Sun Medical Supplies
Your Source for Healthcare Products
NPI # 1184716672

TO ORDER USE HCPC CODE:

A5112 QT: (monthly needed)



INCONTINENCE HCPC CODES



Sun Medical Supplies
Your Source for Healthcare Products
NPI # 1184716672

HCPC	Item Name & Description
A4310	Insertion tray without drainage bag and without catheter (accessories only)
A4311	Insertion tray without drainage bag with indwelling catheter, Foley type, 2-way, latex with coating (Teflon, silicone, silicone elastomer or hydrophilic, etc.)
A4312	Insertion tray without drainage bag with indwelling catheter, Foley type, 2-way, all silicone
A4314	Insertion tray with drainage bag with indwelling catheter, Foley type, 2-way, latex with coating (Teflon, silicone, silicone elastomer or hydrophilic, etc.)
A4315	Insertion tray with drainage bag with indwelling catheter, Foley type, 2-way, all silicone
A4316	Insertion tray with drainage bag with indwelling catheter, Foley type, 3-way, for continuous irrigation
A4320	Irrigation tray with bulb or piston syringe, any purpose
A4322	Irrigation syringe, bulb or piston, each
A4326	Male external catheter with integral collection chamber, any type, each
A4327	Male external catheter, with adhesive strip, each
A4328	Male external catheter, with adhesive catheter, each
A4331	Penile clamp or similar device, each
A4332	Lubricant
A4333	Urinary catheter anchoring device, adhesive skin attachment, each
A4335	Incontinence Misc.
A4335	Indwelling catheter, Foley type, 2-way, all silicone, each
A4340	Indwelling catheter, Foley type, 3-way, for continuous irrigation, each
A4344	Male external catheter, with or without adhesive, disposable, each
A4351	Intermittent urinary catheter, Straight tip, with or without coating (Teflon, silicone, silicone elastomer, or hydrophilic, etc.), each
A4352	Intermittent urinary catheter, Coude (curved) tip, with or without coating (Teflon, silicone, silicone elastomer, or hydrophilic, etc.), each
A4353	Intermittent urinary catheter, with insertion supplies
A4354	Incontinence supply; miscellaneous
A4357	Bedside drainage bag, day or night, with or without anti-reflux device, with or without tube, each
A4358	Urinary drainage bag, leg or abdomen, vinyl, with or without tube, with straps, each
A4362	Ostomy faceplate, each
A4362	Skin barrier, solid, 4 x 4 or equivalent, each
A4364	Adhesive, liquid or equal, any type, per oz
A4367	Ostomy belt, each
A4369	Ostomy skin barrier, liquid (spray, brush, etc), per oz
A4371	Ostomy skin barrier, solid, standard wear, with built-in convexity, each
A4373	Ostomy skin barrier, with flange (solid, flexible, accordion) with built-in convexity, any size, each
A4375	Ostomy pouch, drainable, with faceplate attached, rubber, each
A4385	Ostomy pouch, urinary, with faceplate attached, rubber, each
A4388	Ostomy pouch, urinary, for use on faceplate, plastic, each

INCONTINENCE HCPC CODES



Sun Medical Supplies
Your Source for Healthcare Products
NPI # 1184716672

HCPC	Item Name & Description
A4390	Ostomy pouch, drainable, with extended wear barrier attached, with built-in convexity (1-piece), each
A4394	Ostomy deodorant, with or without lubricant, for use in ostomy pouch, per fluid ounce
A4396	Ostomy irrigation supply, bag, each
A4399	Ostomy irrigation faceplate
A4402	Ostomy skin barrier, non-petrolatum based, paste, per ounce
A4406	Ostomy skin barrier, with flange (solid, flexible, accordion), extended wear, built-in convexity, 4 x 4 inches or smaller, each
A4407	Ostomy skin barrier, with flange (solid, flexible, accordion), extended wear, built-in convexity, larger than 4 x 4 inches, each
A4409	Ostomy skin barrier, with flange (solid, flexible, accordion), extended wear, without convexity, larger than 4 x 4 inches, each
A4410	Ostomy skin barrier, solid, 4x4 or equivalent, each
A4411	Ostomy skin barrier, with flange (solid, flexible, accordion), extended wear, with built-in convexity, each
A4413	Ostomy pouch, drainable, with barrier attached, with filter (1-piece), each
A4414	Ostomy pouch, closed, for use on barrier with non-locking flange (1-piece), each
A4419	Ostomy pouch, urinary, for use on barrier with locking flange (1-piece), each
A4421	Ostomy pouch, drainable, with barrier attached, with filter (2-piece system), each
A4424	Ostomy pouch, urinary, for use on barrier with filter (2-piece system), each
A4927	Examination Gloves
A6250	Incontinence Ointment
E0325	Urinals
T4521	Small Brief (Diaper)
T4522	Medium Brief (Diaper)
T4523	Large Brief (Diaper)
T4524	X-Large Brief (Diaper)
T4525	Small Underwear (Pull-on)
T4526	Medium Underwear (Pull-on)
T4527	Large Underwear (Pull-on)
T4528	Underwear above X-Large
T4544	Underwear 2XLarge
T4535	Bladder Control Pads (Small)
T4536	Reusable Pull Up/ Underwear
T4541	Underpads
A4335	Body Wash Per oz
T4533	Youth Briefs
T4534	Youth Underwear
T4530	Infant Briefs
T4537	Reusable Underpads

RETAIL PRODUCTS AVAILABLE



Scan Me

www.SunMedicalSupplies.com

USE PROMO CODE: Save 10%



WE OFFER THOUSANDS OF ADDITIONAL NON-COVERED ITEMS THOROUGH OUR RETAIL LOCATIONS AND ONLINE STORE!



Trusted Since 2003

Sun Medical Supplies

Your Source for Healthcare Products

HOME DELIVERY AVAILABLE

RENTAL EQUIPMENT AVAILABLE

NEW & PRE-OWNED EQUIPMENT

EQUIPMENT SERVICE & REPAIRS

Beaumont Store

635 N. Highland Springs Ave.
Beaumont, CA 92223
(951) 888-3007

Redlands Store

1915 W. Redlands Blvd. #101
Redlands, CA 92373
(909) 307-8090

FINANCING OPTIONS AVAILABLE





Sun Medical Supplies

Your Source for Healthcare Products



**We're here to help
Contact us:**

(909) 577-1211

1915 W. Redlands Blvd. #101
Redlands, CA 92373

www.sunmedicalsupplies.com

