

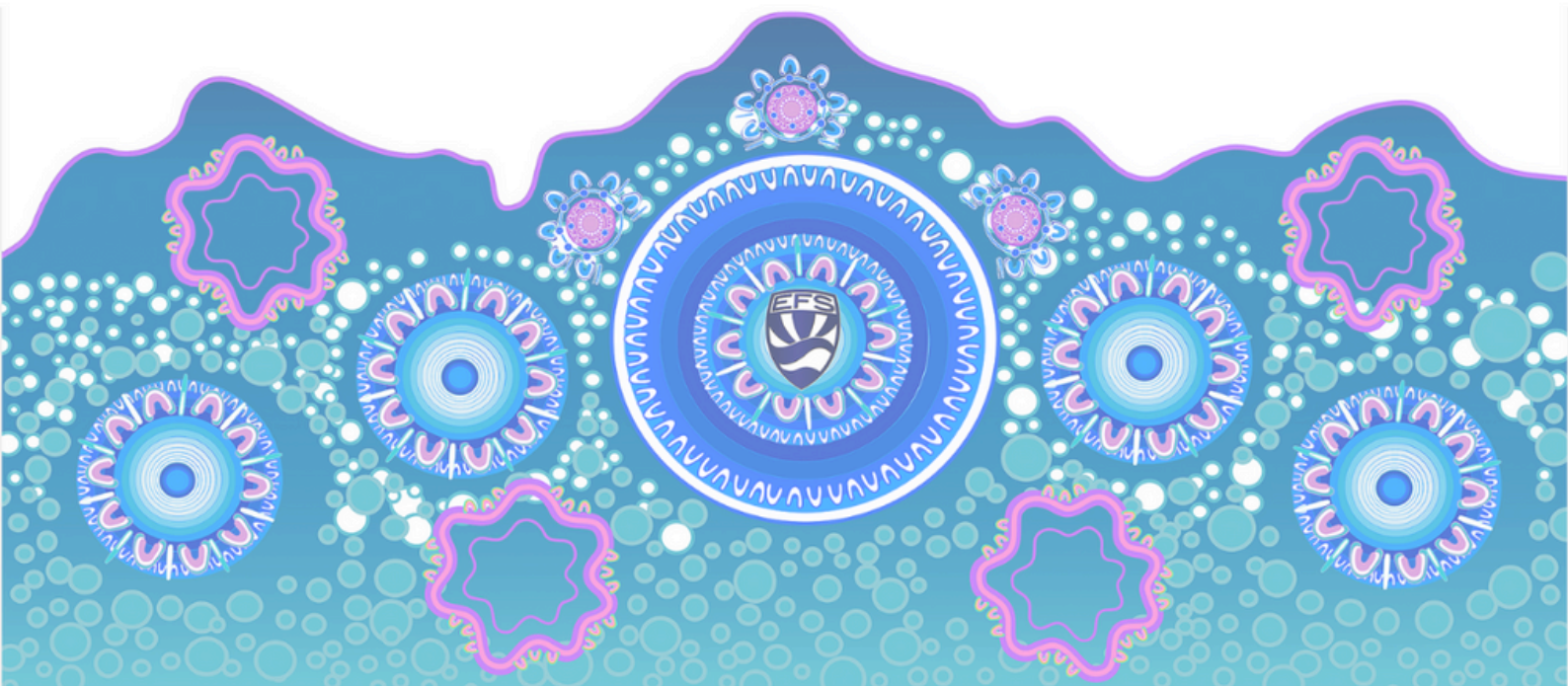


Eastern Fleurieu R-12 School



Government of South Australia
Department for Education

FAMILIES HANDBOOK 2026



Contents

Acknowledgement of Country	3	Strathalbyn R-6 Campus	31
Our Context	4	Our Leaders	32
Our Sites	5	Site Information	33
Our Values	6	Curriculum	37
Contact and Important Dates	7	Play	39
		Reporting	39
R-12 General Information		Inclusion & Wellbeing	40
Code of Conduct	8	Family Involvement	41
Governing Council	9		
Volunteers	9	Ashbourne Campus	42
Attendance	10	Site Information	43
Buses	11		
Bushfire Safety	13	Langhorne Creek Campus	46
Communication	15	Site Information	47
Finance	17		
School Card	18	Milang Campus	50
First Nations Education	19	Site Information	51
Health & Safety	20		
Health & Medical	21	Strathalbyn 7-12 Campus	54
Inclusion & Wellbeing	22	Our Leaders	55
Quality Start	24	Site Information	56
Stationery	25	Student Services	57
Uniform	25	Curriculum	59
Transitions	27	ICT	60
Curriculum & Reporting	28	Health & Safety	61
Excursions & Camps	29	General Information	62
International Education	29	Student Expectations	63
Homework	30	Student Code of Conduct	64
Mobile Devices	30	Stationery	66

Acknowledgement of Country

With deep respect, we acknowledge the Aboriginal peoples as the First Peoples and Nations of the lands and waters on which we live, learn, and grow.

At Eastern Fleurieu R-12 School, we honour and pay respect to the Warki People of the Ngarrindjeri Nation and the Peramangk People, the Traditional Custodians of the lands on which our campuses are built. Their enduring connection to Country – their lands, waters, skies, and all living things – guides our understanding and inspires our shared journey forward.

We recognise the unbroken, sacred relationship that Aboriginal and Torres Strait Islander peoples hold with Country – a relationship woven through language, law, culture, ceremony, and kinship. These cultural and spiritual beliefs remain deeply embedded, continuing to shape identity and belonging today.

We pay our respects to Elders past and present, whose wisdom and leadership sustain community and culture. We also acknowledge the cultural authority of Aboriginal people visiting from other areas of South Australia and Australia.

May we continue to walk together in truth, learning from the knowledge of the world's oldest living cultures.

From The Principal

At Eastern Fleurieu R-12 School, our students are our purpose. We create an inclusive and connected learning community that challenges and supports every learner to achieve their best.

We maintain high expectations and a shared belief that all students can succeed. Learning is strengthened by strong partnerships between school, home, and community, guided by our values of Respect, Integrity, Determination, and Teamwork.

Our staff are dedicated professionals who place students at the centre of their practice, ensuring that wellbeing, inclusion, and academic rigour go hand in hand. Together, we build the skills and dispositions that empower lifelong learners and responsible global citizens.

I invite you to read this handbook and contact any member of staff if you need to clarify any of the information provided.

*Ian Kent,
Principal*

Our Sites



EASTERN FLEURIEU R-12 SCHOOL
 Head Office: 11 Callington Road, Strathalbyn SA 5255
 Phone: 08 8536 2455
 Website: www.easternfleurieu.sa.edu.au
 Email: dl.1884.info@schools.sa.edu.au

ASHBOURNE	LANGHORNE CREEK	MILANG	STRATHALBYN R-6	STRATHALBYN 7-12
				
Ashbourne Rd, Ashbourne, SA 5157	Wellington Road, Langhorne Creek SA, 5255	Cnr Cox and Rivers Streets, Milang SA 5256	34 East Terrace, Strathalbyn, SA 5255	11 Callington Road, Strathalbyn, SA 5255
Email: dl.0342.info@schools.sa.edu.au	Email: dl.0218.info@schools.sa.edu.au	Email: dl.0262.info@schools.sa.edu.au	Email: dl.0418.info@schools.sa.edu.au	Email: dl.0796.info@schools.sa.edu.au

Our Values



At Eastern Fleurieu R-12 School, our motto **Excellence through Unity** captures the spirit of our multi-campus environment and our commitment to operating as one school.

Our core values of **Respect, Integrity, Determination, and Teamwork**, co-developed with our students, underpin the expectations and aspirations within our school community.

These values guide our daily interactions and help shape a positive, inclusive, and purposeful environment for all.

Executive Leadership



Ian Kent
Principal



Jo Garwood
Director of Primary
Education



Vanessa Coker
Director of Secondary
Education

Contact Us

Eastern Fleurieu R-12 School

Head Office: 11 Callington Road, Strathalbyn SA 5255

Phone: 08 8536 2455

Website: www.easternfleurieu.sa.edu.au

Email: dl.1884.info@schools.sa.edu.au



2026 CALENDAR DATES

Term 1	FRIDAY 6th March	STUDENT FREE DAY STAFF TRAINING DAY
Term 2	TUESDAY 9th June	STUDENT FREE DAY STAFF TRAINING DAY
Term 3	FRIDAY 4th September	STUDENT FREE DAY STAFF TRAINING DAY
	MONDAY 7th September	SCHOOL CLOSURE DAY
Term 4	FRIDAY 13th November	STUDENT FREE DAY STAFF TRAINING DAY

Code of Conduct

Our Code of Conduct ensures a respectful, safe, and inclusive environment for all students, families, and visitors.



Eastern Fleurieu R-12 School **CODE OF CONDUCT** for families, visitors, volunteers, and service providers

WELCOME TO OUR SCHOOL



Families, visitors, volunteers and service providers are valued and respected members of our learning community. You can expect to:

- be welcomed by school staff who are inclusive, supportive and professional
- experience a school culture that encourages two-way conversations and positive behaviours
- be welcomed to partner with us to support children's learning and the wellbeing of our school community

WORKING TOGETHER



To help us provide a safe, inclusive and supportive learning environment, we ask you to recognise that our school is also a workplace. You are expected to:

- follow instructions set out by the school, and follow all regulations, policies and procedures
- be honest and fair, show respect for others and model positive behaviour
- follow the school's procedures for communicating using social media, SZapp, seesaw, instagram, email, phone and in-person as per our school Communication Policy

MAINTAINING A SAFE WORKING ENVIRONMENT



Unacceptable and offensive behaviours are not accepted in education settings. These include:

- behaving in ways that are intimidating, humiliating, aggressive or abusive
- harassing, victimising or discriminating against others
- behaving in ways that endanger the health, safety or wellbeing of those around them
- engaging in behaviour that harms the reputation of the school, staff or students
- inappropriately using social media, phone or email
- inappropriately using recorded videos or audio, or photos of students, staff or school community members
- sharing any information about school staff or students gained through participating in school/learning activities
- entering school grounds while affected by, or to consume illicit drugs or alcohol, or to supply or attempt to supply them to staff or students

UNACCEPTABLE BEHAVIOUR



If you experience or see unacceptable or offensive behaviour, contact your line manager and follow our school grievance procedures.

If your behaviour is unacceptable or offensive, you could be asked to leave the premises, or SA police may be called.

Governing Council

Governing Council (GC) has joint responsibility with the Principal for the governance of our school by setting the school's broad direction and vision, developing, approving and reviewing policies, determining the application of the budget, presenting plans and reports to the school community and Minister, working with site leaders and staff to improve learning outcomes for our students, engaging and representing the school community, ensuring the cultural and social diversity of our sites and local community are considered when making decisions, and monitoring and reporting on achievements.

In partnership with the Principal and the school Executive Leadership team, our GC is focussed on strengthening the financial sustainability of our school, embracing a framework to ensure decision making is clear and transparent, our communication tools and processes are inclusive of everyone, and warmly embracing our smaller campuses to encourage and promote a unified school community.

Underlining all GC decisions is a very strong focus on not only student outcomes and student involvement in decision making, but also on building capacity for the future in our students and our teaching cohort.

Your EFS GC has diverse community representation. Elections are held every year and appointments are for 2 year terms, with half the council positions vacant each year.

Whilst membership of Governing Council takes time and dedication, the reward is that members play an important role influencing decisions that ultimately impact all aspects of our children's learning environment.

Further information about the Governing Council can be found [here](#).

Volunteers

It is a DfE requirement that most volunteers need to undertake a Working With Children Check (WWCC) as well as Responding to Risks of Harm, Abuse and Neglect (RRHAN-EC) training. Please see Front Office staff for the necessary paperwork if you would like to volunteer at any campus.



Attendance

Attendance Requirements

- By law, children (6-16 years) are required to attend school on every occasion the school is open for instruction, unless they are ill, or there are extenuating circumstances
- Exemptions can be approved by Leaders for absences of 5 days up to 1 month
- Exemptions for longer than 1 month or more need to be approved by DfE, applications available at the Front Office
- Whenever a child is absent from school a written explanation for the absence is required. The school will contact parents after 3 days of unexplained absences
- Data regarding individual attendances/absences is required by the Department for Education and is entered on a daily basis

Signing In and Out

- All students arriving late or leaving early must sign out via Student Services or the Front Office
- No students are able to sign out without prior parent/carers communication and school approval
- Communication about students signing out MUST go via Students Services, not students' personal mobiles which are not in use during the school day
- All visitors and volunteers need to sign in to all sites



Buses

Eastern Fleurieu School (EFS) operates 11 buses that transport students to and from school. Eligibility is based on the Department for Education (DfE) Transport Policy available [here](#).

Safety and behaviour expectations for students and families is available [here](#).

For individual information about the buses servicing each campus please see the relevant campus section in this handbook.

Bus travel is provided at no cost for students who meet the criteria, which generally includes residing more than 5 km from the closest government school or, for EFS students, from the nearest EFS campus within the designated "zone" for bus travel, as defined by the DfE Transport Unit. This service is available to both primary and secondary students for their daily school commute.

In addition to regular transport, EFS reviews applications for temporary bus use for specific purposes, such as work experience, organised sports training, and youth services, as long as seating is available and requests comply with the DfE Transport Policy. Buses are not, however, available for casual travel, like visiting friends or attending sleepovers.

Since DfE doesn't own enough buses to support every school in the state, it contracts bus services through various providers (currently Willunga Charter and LinkSA), with EFS managing student eligibility for bus use through the DfE Transport Policy.

Seating Capacity

At times, a bus may seem to have empty seats even when it is officially "at capacity." EFS must ensure that every eligible student who has requested access to the DfE-provided bus service has a reserved seat. However, not all students use the bus daily. As a result, seats may appear vacant even though they are allocated.

Bus Routes

The following buses, provided by the DfE, service our school:

- Ashbourne/Meadows – Willunga Charter
- Lake Plains/Langhorne Creek – Willunga Charter
- Kuitpo/Meadows – LinkSA
- Langhorne Creek/Mulgundawa – LinkSA
- Milang/Finniss – LinkSA
- Milang/Clayton – LinkSA
- Woodchester/Bletchley/Hartley – LinkSA
- Paris Creek – DfE owned bus

Buses

Students not eligible for DfE-provided buses

SouthLink operates a “Strathalbyn School Bus Loop” Passenger Service 854 that travels along Alexandrina Road to Michelmore Road, around Burnside and around Willyaroo for students who live closer than 5km from the school. These students are considered “in zone” for EFS but not eligible for DfE-provided transport by bus. This is a user-pay passenger service operated by SouthLink. The school, therefore, does not assess students for travel or keep a manifest of passengers. Information and fares are available from the [SouthLink website](#).

Mount Barker Residents

Families living in Mt Barker for whom EFS is their school of choice can access Adelaide Metro Passenger Service 852 that travels through Mt Barker and Wistow to Strathalbyn. These students are considered “out of zone” as determined by the DfE bus catchment area. This is a user-pay passenger ‘country’ service operated by Adelaide Metro/SouthLink. The school, therefore, does not assess students for travel or keep a manifest of passengers. Information and fares are available from the [SouthLink website](#).

Murray Bridge Residents

LinkSA Murray Bridge operates Murray Bridge Passenger Service that travels through Kanmantoo and Callington for families for whom EFS is their school of choice. These students are considered “out of zone” as determined by the DfE bus catchment area. This is a user-pay passenger service operated by LinkSA. The school, therefore, does not assess students for travel or keep a manifest of passengers. Information and fares are available from the [LinkSA website](#).

As passenger service providers, some bus companies are unable to adjust their timetables to accommodate early school dismissal times. Additionally, these buses are open to the general public, allowing members of the community to travel alongside students.



Bushfire Information & Safety

Catastrophic Fire Days

News services will announce a Catastrophic Fire Weather day on both radio and television and information will be updated on the CFS website. The Department for Education provides official advice to schools by 4.15pm the day prior to the day declared as catastrophic.

- The Mt Lofty Fire District covers: the area west of Strathalbyn (which includes the school's Ashbourne, Strathalbyn R-6 and 7-12 Campuses)
- The Murraylands Fire District covers: the area east of Strathalbyn (which includes Langhorne Creek and Milang Campuses).
- The border between Mt Lofty and Murraylands Fire Districts runs directly north east from Strathalbyn (refer www.cfs.sa.gov.au).

BUSES

When catastrophic fire days are forecast, and following official advice from the Dept for Education, the following will apply:

- If both Mt Lofty & Murraylands have been declared catastrophic, no school buses will operate
- If only Mt Lofty is declared catastrophic, no school buses will operate as both Strathalbyn Campuses lie within this zone
- If only Murraylands is declared catastrophic, only the Paris Creek, Ashbourne/Meadows and Kuitpo/Meadows runs will operate

Buses servicing Eastern Fleurieu School are:

MT LOFTY DISTRICT: Department free-service buses: Ashbourne/Meadows, Kuitpo/Meadows, Paris Creek, plus public user-pays services: Adelaide Metro/Southlink Buses 852 and 854.

MURRAYLANDS DISTRICT: Department free-service buses: Langhorne Creek/Lake Plains, Langhorne Creek/Mulgundawa, Milang/Clayton, Milang/Finniss and Woodchester, plus public user-pays services: Murray Bridge Passenger Service (Callington Bus) and Adelaide Metro/Southlink 854 (Willyaroo).

OUR CAMPUSES

- On declared Catastrophic Days **ASHBOURNE CAMPUS WILL BE CLOSED**
- Other campuses, if individually deemed by the CFS to be a safe venue, will be open and supervised by available staff, as a service to families at risk of being impacted by fire events, and for as long as needed.

Bushfire Information & Safety

Major Bushfire or Disasters

- In the event of a major bushfire, all children will remain inside at school in the care of class teachers until CFS has informed the school that the danger has passed. No child will board a bus to leave the school, until the bus route has been determined as safe by the CFS.
- If parents wish to collect their children at the end of the school day they must collect students through the Principal or nominees. Only parents or the emergency contact person listed in the school register may collect students in these circumstances.
- In the event of incidents developing during the day: Families wishing to pick up their children early from school **MUST** make arrangements by ringing the relevant campus. **DO NOT PHONE YOUR CHILD DIRECT** – staff will ensure your child is ready for a prompt pick-up. The school has a duty of care to know the whereabouts of every student at all times, but especially during times of crisis. Obviously families need to carefully assess their travel route options when making this decision.
- In the event of fires threatening a bus or bus routes – any affected busses **WILL NOT** be permitted to leave the school until it is declared safe by the CFS. Children will remain at school and cared for by staff, volunteers and welfare service for as long as is necessary. Children will be released only to parents or emergency contact persons.

It is vital that mobile numbers and other contact details are current and correct in our database to enable rapid and efficient notifications being sent to families when emergencies arise. If you need to update your contact details please do so in writing.

When the school is officially notified of incidents by Police, CFS or DfE, information will be relayed to our families via our communication tools – DayMap, Facebook, SZapp, SMS and telephone, as instructed by the emergency authority and/or DfE

Parents and caregivers are encouraged to read the publication on the Department for Education's website entitled ["Bushfire and Your Child's School or Pre-school"](#).

Communication

Schoolzine (SZapp)

All families must download the SZApp (available for Apple and Android devices). The app is the main communication tool for important dates, newsletters, events, emergency information, learning conversation bookings and much more. More detailed instructions can be found [here](#).



Newsletters

R-12 Newsletters are distributed in Weeks 3 and 7 of each term via SZapp, on the school website or via email subscription. Each campus has a dedication section showcasing events, student achievements, promoting upcoming activities and much more.

Daymap

Daymap is the main learner management system across our school and is where all R-12 student reports are published. It is also used extensively at the 7-12 campus for student assessment, bulletins, attendance, parent contact and much more. More information about Daymap can be found in the 7-12 section of the handbook [here](#).



SeeSaw

Seesaw is a tool used across the R-6 classes at our Strathalbyn R-6 and Langhorne Creek campuses, for families to see, share and respond to their child's learning. Families will receive a QR code to use to be linked to the class and their child's work. More information is given to families at the start of each year. Please contact your child's teacher for more information.



Website & Social Media

EFS has a comprehensive website and number of social media sites to showcase our school, promote events and provide information to the wider school community.

Website
(R-12)



Facebook
(R-12)



Instagram
(7-12)



Communication

Communication with and from Families

We encourage open, honest communication between home and school to foster and support children's learning.

If there is the need to discuss an issue concerning your child, in the first instance, please contact the teacher involved and arrange an appointment. Issues can be escalated as required to a Leader, Head of Campus, Director or Principal. Details of the process and policy can be found [here](#).

DfE have a process for families to escalate a complaint to them. Details can be found [here](#).

Family Contact Details

It is extremely important that contact details for families, including emergency contacts are kept up to date.

The information is used to contact families for a wide variety of reasons including emergency situations, learning and assessment information, excursion permissions, attendance and many other reasons.

Information required to be kept up to date includes:

- Phone numbers, home addresses and email addresses of both enrolling parent/guardians
- Phone numbers and relationships of emergency contacts
- Student health information
- Custody Orders or Intervention Order information

Records held in the School Student confidential records are kept in the office and are accessible by parents/guardians on request.



Finance & Fees

School Fees

Material and Services invoices are sent out to postal addresses in early-mid January each year.

For students in Years 10 - 12, there may be additional subject charges. These are based on which subjects students have chosen. These will be sent as invoices as changes are requested.

Invoices for optional excursions or other activities will be sent out as required throughout the year. Activities that are optional are not able to be paid in instalments. They must be paid in full prior to the activity.

Making Payments

Eastern Fleurieu R-12 School offers many options for parents to pay Materials & Services charges (school fees), subject fees, camps, excursions and other extra-curricular charges. As all campuses are connected as one school, you can make payments at any of the campuses regardless of which campus your child attends.

IN-PERSON OPTIONS

- Cash or cheque at any of the 5 campuses
- EFTPOS at either of the two Strathalbyn campuses
- PAYMENT PLANS – Negotiated Direct Debit agreements can be arranged through the Finance Officer at your campus. Frequency and amount can be nominated by you, and transactions are processed by St Georges Bank through their secure PayWay facility. Activities that are optional cannot be paid by instalment and must be paid in full before the activity.

ON-LINE OPTIONS

- EFT into the school's account – an option for 'one off' payments, not for ongoing instalments.
- BPOINT – an option for 'one off' payments', not for ongoing instalments
- Families making payments into the school's account must provide their unique Family ID (4 letters and 2 numbers) somewhere in the payment description. This is crucial to ensure payments are applied to the correct account. School account: **BSB 105-019 Acct number: 037300040**
- Click on Make a Payment link on the school's website www.easternfleurieu.sa.edu.au
- Direct link to [BPOINT](#) payment site

FINANCIAL DIFFICULTIES?

If experiencing financial difficulties at any time during the year please contact the R-12 Finance Officer at the 7-12 Campus on 8536 2455 to confidentially discuss the extension of due dates or other financial assistance the school may be able to offer.

School Card

If you're a low-income family with children attending EFS, you may be eligible for financial help with school fees, materials and services charges through the School Card scheme. You may also be able to get access to a free device if your child is in Year 7.

All families are urged to apply for School Card as soon as possible after applications open in mid-January, as approval will cover Materials & Services Charges (school fees) and may assist with other concessions. School Card must be applied for every school year, approval based on the prior financial year. On-line application instructions are below. Paper applications are also available from your campus Finance Officer if internet access is an issue.

APPLYING FOR A SCHOOL CARD



All types of School Card applications are now online.

You can access the online forms from any device that gets internet, including mobile devices, such as tablets and smart phones, as well as laptops and computers.

Applying online is easy! Simply follow the steps below.

- STEP 1** Visit sa.gov.au/education/schoolcard
- STEP 2** Select the type of School Card you would like to apply for (for example 'Type A') and follow the prompts.
- STEP 3** Complete all mandatory fields.
Please note: you cannot submit your application unless all mandatory fields are complete.
- STEP 4** Once you have completed a page click on the 'NEXT' button.
- STEP 5** Once you have filled out all pages click the 'SUBMIT' button.
Please note: if you exit the form without clicking 'SUBMIT' your details will be lost.

You can save the form, and return to complete it at another time, by clicking on the 'SAVE' button.



sa.gov.au/education/schoolcard

First Nations Education

First Nations Handbook

This includes all relevant information about our programs, supports and opportunities available for Aboriginal and Torres Strait Islander students and families. [Please click here for the handbook.](#)

First Nations Team

Our First Nations Education Team consists of a First Nations Leader and Aboriginal Community Education Officers (ACEOs) who work across all five Eastern Fleurieu School campuses. Our team is committed to creating greater awareness and appreciation of Aboriginal and Torres Strait Islander cultures, histories and peoples.

We provide targeted learning opportunities for Aboriginal and Torres Strait Islander students that strengthen Literacy and Numeracy skills, while supporting them to engage with and grow their cultural identities.

We assist staff to embed First Nations perspectives into learning programs in ways that are respectful, responsive, and inclusive. Our team also leads and promotes First Nations events and days of significance across the school.

GO Foundation

Eastern Fleurieu R-12 School is a partner school with the GO Foundation. [Please click here for their website.](#)

GO creates opportunities for Indigenous students to connect with culture, identity and community throughout their schooling. With wrap-around support, GO students are encouraged to dream big and pursue their educational and career goals with confidence. Through partner experiences, they learn about careers, build networks, and strengthen their sense of identity and belonging.

GO Scholarships are awarded based on school attendance, aspiration, cultural identity, community contribution, and financial need. Scholarships help cover educational costs such as uniforms, excursions, tutoring, laptops, iPads, stationery, backpacks, textbooks and home WiFi.

GO places culture at the heart of everything they do. Students also participate in Culture Connect Days, giving them opportunities to learn about and deepen their cultural identity alongside other Indigenous young people.

Scholarships are available for Indigenous students in Years 1, 3, 5, 7, 9 and 11.

General Health & Safety

Bicycles & Scooters

- Students must carefully walk bikes and scooters while on school grounds
- All bicycles and scooters should be parked in the bike racks
- Children should not loiter or play in this area

Emergencies

School fire drills involving evacuation or invacuation will be conducted at regular intervals.

Hot Weather Policy

The school never closes or sends children home on extremely hot days as all areas are air-conditioned.

However, on days when the estimated temperature is deemed too high, indoor play will occur and outside activities will be modified to be undertaken indoors. The buses will run at the normal time each day to link with other buses.

Smoke & Vape Free Zone

For health reasons and to encourage appropriate student attitudes it is school and government policy that our school is a SMOKE AND VAPE FREE ZONE. This is a legislative requirement.

Headlice

Please notify your campus if you have detected head lice or eggs in your child's hair, even if it has been treated. A letter will be sent home to inform other families of headlice outbreaks so they can check their child(ren).

Infectious Diseases

Common ailments where Department for Education and Children's Services Regulations prohibit children from attending school:

- Mumps 14 days
- Measles 7 days
- German Measles 7 days
- Chicken Pox 7 days

Please inform the school of any infectious diseases your child may have so information can be sent home to all families. All other ailments are determined by DfE guidelines, please enquire if required.

Health & Medical Information

Our school is committed to supporting the health and well-being of all students. We acknowledge that parents/carers retain primary responsibility for their child's health care. This includes responsibility for providing accurate, up-to-date, relevant information for staff regarding children's routine and emergency health care needs. Students will be supported to develop safe, self-management of their health care needs. This will occur with respect for the child's age and stage of development.

Nuts and other Food Allergies

Some classes are nut free to support student's health needs within the class. You will be notified at the beginning of the year of any needs within the class group.

First Aid

If a child becomes unexpectedly ill or injured, staff will:

- Administer basic first aid
- Office staff will call an ambulance if needed and continue to administer first aid
- Inform parent/carer as required

Health Care Plans

Some students may require assistance with their routine or emergency health. Before staff can assist with this, parents/carers must provide written information from their doctor, which outlines specific care needs.

Forms for health care plans are available from your campus for a range of health conditions and needs, including:

- Asthma
- Diabetes
- Anaphylaxis (severe allergy)
- Medical information (for general health care or those without specific forms)
- General health information (to be completed by a general practitioner, psychiatrist or psychologist)

It is the responsibility of parents/carers to:

- Request these forms
- Ensure all appropriate forms are completed and signed by the doctor
- Sign all appropriate forms as parent/carer
- Return all forms to the front office staff
- Update all medical information on the appropriate forms as necessary

Medication during the day

If students are required to take medication during the day (this includes asthma puffers), the appropriate medication forms must be filled out by a doctor before the school can administer. All boxes/containers must be clearly labelled with the medication name, student name, dosage etc. Students will be supervised by Front Office staff to ensure the correct dosage is given.

Inclusion & Wellbeing

At Eastern Fleurieu School, we foster an inclusive and supportive environment where every student feels valued, safe, and empowered to thrive. We have a strong focus on strengths based, trauma informed, positive education and all staff are trained in this approach. Students from Reception to Year 12 are supported through Multi-Tiered System of Supports, designed to ensure that all students receive the support and interventions they need to succeed academically, socially, and emotionally.

Class and Homegroup teachers provide daily check ins through a Welcome Circle and work with individuals, groups and whole classes to develop positive wellbeing. Through dedicated Wellbeing programs.

Inclusion & Wellbeing Leaders, Youth Workers and SSOs work along side class teachers to provide additional supports, working with students and families to access external services and referrals when needed. Through a Team around the Child approach, families are encouraged to connect with school staff to ensure a holistic approach.

A range of programs and supports are available across campuses including:

- Inclusion and Wellbeing Leaders
- Youth Workers
- Learning Support SSOs
- Pawz a While
- Ready to Learn Rooms and supports
- Connect
- Breakfast Club
- Literacy and Numeracy Intervention
- Autism Inclusion Teachers and programs
- Social Emotional development groups
- School Wellbeing dog
- Disability Transition Pathways programs

Special Options

Eastern Fleurieu School hosts two DfE Special Options classes, located at Strathalbyn R-6 campus, and Strathalbyn 7-12 campus. Schools do not make decisions on enrolments into Special Options classes. This occurs through a statewide process managed by DfE Support Services. If you believe this specialised setting might be suitable for your child please contact us to learn more about the referral process. The referral processes begin early in term 1 for the following year.



Inclusion & Wellbeing

Trauma-Informed Practice

EFS is part of the Trauma-Aware Schools Initiative. The Berry Street Education Model, alongside other trauma-informed strategies, is used to ensure we provide education through a trauma-informed lens. All staff receive ongoing training in the use of these strategies and have access to on-site experts in the trauma-informed field. A number of consistent strategies are embedded into our everyday practice including:

- Welcome circles - At the start of each day
- Ready to Learn Scales - Displayed in each room for teachers to refer to
- Ready to Learn Plans - Developed and utilised by students in collaboration with teachers
- Brain Breaks - Provided to up regulate or down regulate the class as needed during learning blocks
- Unconditional Positive Regard for all students at all times

Positive Behaviour for Learning

Positive behaviour for learning (PBL) is a DfE framework used by teachers to support student behaviour and engagement. PBL classroom practices:

- teach academic and social behaviours
- build and maintain positive relationships with students
- establish consistent behaviour expectations across all classrooms
- can be used for all students no matter their age, developmental stage, functional needs or disability
- are universal strategies
- can be shared with parents and carers so they can use the same practices at home

The PBL classroom practices work well alongside trauma-informed and restorative practices.

Restorative Practices

Restorative practices encourage a profound fairness and culture of listening. Staff use Restorative Practices to resolve conflict, complaints or other issues of concern.

There are a variety of ways that Restorative Practices are used at our campuses. These practices run along side other Behaviour Management processes.

- Restorative Chats: Informal conversation between teachers and students for prevention and early intervention of low-level disruptions
- Class Meetings: Helps a class establish behaviour expectations and develop a healthy learning culture
- Restorative Conversations : May involve Head of Campus or Wellbeing staff member to support students address issues in a restorative way. In more serious situations parents are contacted and behaviour plans may be put in place.
- Group Conferences: A more structured process used formally to deal with conflict and serious issues. Conferences aim to resolve the issue - not to blame people.

Quality Start

The first days and weeks of the school year begin with “A Quality Start”. Together teachers and students build classroom environments that are caring, connected, supportive, safe, and enjoyable places to be. Children do better physically, socially, emotionally and cognitively when they have a strong sense of connectedness to their school community.

Throughout ‘A Quality Start’ students engage in activities that help them get to know their teacher and classmates well. The program includes opportunities to promote cooperation and collaboration through discussions, sharing, listening and supporting each other.

Students develop understandings about how they learn best and how to look after their brain to maximise learning. They develop skills in using a variety of thinking tools and strategies that can promote and support independent, effective learning, both at school and in their future lives.

During ‘A Quality Start’ classrooms are established as communities for learning that foster a strong sense of belonging.



Stationery

At the R-6 campuses, all stationery is supplied.

The stationery required for students at the 7-12 campus can be found [here](#).

Uniform

Eastern Fleurieu R-12 School has adopted a Uniform Policy in accordance with Department for Education School Dress Code Guidelines and in a consultative process involving the Governing Council, staff, students and parents.

We believe that a uniform will:

- promote pride, sense of belonging and a positive school image
- help to provide a safe school environment
- create an identity with the school
- assist in identifying strangers on the school grounds
- maintain a high standard of appearance
- create equal status amongst students

Uniform Information can be found on our website [here](#).

Exemptions to the uniform policy:

Students may be exempted on the grounds stated in the DfE Administrative guidelines at present, these are:

- Religious cultural or ethnic grounds
- New students (reasonable time)
- Itinerant students
- Medical grounds

Please note that it is not grounds for an exemption that the child or family "do not like" the uniform. Please be aware that the student leadership group are currently undertaking a review of the school uniform options in partnership with the school leadership team.

Uniform Shop

The Eastern Fleurieu School uniform shop is located at 9A Callington Road, Strathalbyn (next door to the 7-12 Campus)

Normal opening hours are:

Tuesday 8:30am - 10:40am

Thursday 3:45pm - 5:45pm

If those hours do not suit you, they can take email and phone orders and also arrange remote purchases for your convenience. There are extended hours across the January holidays (see below)

All our uniform options are available from the uniform shop and a dress maker is available for sizing.

School Uniform Shop JANUARY HOLIDAY OPEN HOURS

TUESDAY JANUARY	20	10:00AM - 1:00PM
WEDNESDAY JANUARY	21	3:00PM - 6:00PM
THURSDAY JANUARY	22	10:00AM - 1:00PM

TERM TIME OPEN HOURS

Tuesdays 8.30am - 10.45am

Thursdays 3.45pm - 5.45pm



Phone orders welcome 0417 771 944

Email: bubbells@adam.com.au

9a Callington Road, Strathalbyn

Transitions

Into Reception

At our R-6 campuses, the Transition Program is designed to ease the significant change for children and their families, from that of home and kindy, to those in school. During transition children are exposed to and experience some of the routines of formal learning. Parents are significant in the support and assistance they contribute in this setting.

Children are encouraged to join a series 3 or 4 of sessions in the term prior to their commencement as a Reception student. Class placement is subject to existing class structures, and in consideration of total enrolments over the year. There are a number of factors taken into account when constructing class groupings.

Into Year 7

Moving from Year 6 to Year 7 is an exciting milestone, and our Transition Program is here to ensure a smooth and supportive experience. There are a variety of experiences offered throughout the year including

Our transition program is designed to help students feel confident, informed and ready for the shift into secondary schooling. Throughout the year, we offer a variety of experiences including Q&A sessions in primary schools, campus tours, a Taster Day, Step Up Day and information evenings for families. These opportunities allow students to meet staff and peers, explore the learning environment, and understand what to expect in Year 7. For students who may benefit from additional support, we also provide an extended transition program to ensure a smooth and positive start to their secondary years.

In Term 2, families will receive an email from the Department for Education with details about transitioning to high school. This email includes a link to the 'Registration of Interest for Placement in a South Australian Government School' (ED176 form), which assigns a high school based on your current address. If your address changes, proof will be required for reassignment.

Families of all students attending public primary schools will receive the ED176 form. All families, whether selecting a government or independent high school, must complete and submit the ED176 form online. For more information, visit: [Starting Secondary School - SA Department for Education](#)

Curriculum & Reporting

The curriculum at Eastern Fleurieu R-12 is currently based on the SA Curriculum. This provides the basis for programming, planning and assessing student learning at all SA Government schools.

Reporting Progress

Through the National Education Agreement with the Australian Government, DfE schools, in common with all schools around Australia, are required to:

- Provide two reports per year to learners and parents/carers, reporting on all learning areas with A-E grades (or their word equivalents) via Daymap

At EFS, we also communicate student progress to families through Acquaintance Night and Learning Conversations.

All reports are published to Daymap for R-12 students.

Child Protection Curriculum

Throughout the year students will be engaging with the Child Protection Curriculum. It is a DfE responsibility under the Children's Protection Act (1993) and the Child Protection Policy (2011) to ensure that effective abuse prevention programs are implemented and that all children and young people have access to the approved and mandated Child Protection Curriculum. The level of detail and complexity of these areas varies according to the students developmental capabilities.

Although parent/carer permission is not required under the Education Act (1972), we encourage parents/caregivers to seek further clarification if required and to provide the teacher with any relevant information about their child that could alleviate any concerns. Teachers will inform you when they are about to teach this curriculum and their intended content. If you would like more detailed information please speak to your child's teacher or see the DfE website [here](#).

Deep Learning

New Pedagogies for Deep Learning (NPDL) is a Global Knowledge Building Partnership of schools dedicated to transforming teaching and learning practices for a 21st century approach to education. This transformation sees teachers develop student competencies (alongside of content) which is crucial for our young people to thrive in an ever-changing world. Additionally, NDPL incorporates innovative teaching practices that allow students to become the co-creators of their own learning experiences, improving engagement and outcomes.

Every child deserves an opportunity to develop the six global competencies of Collaboration, Communication, Critical Thinking, Creativity, Character, and Citizenship so that they can thrive now, and in the future. New Pedagogies for Deep Learning support our EFS vision to create optimal conditions for learning. EFS was an early adopter of Deep Learning in South Australia and is now a leader in this innovative space both nationally and globally.

Excursions, Incursions and Camps

Opportunities to engage in learning outside of the classroom are highly valuable experiences for students. Throughout the year, students are offered the chance to attend excursions and camps off-site and participate in incursions at school.

At the start of each year we ask for a general consent for local excursions and regular outings. This written consent will cover children taking part in local excursions and activities around their campus.

Parents/carers will receive full information about all proposed excursions, and consent forms will be emailed home along with a signed agreement to pay the cost of camps and excursions if required.

Camps are an important part of our education program for students. Camp venues and programs are varied and children are exposed to a wide range of different activities.

Parents are advised early in the school year of any proposed school camp involving their child. Camps can be quite expensive but payment arrangements can be made through the finance office.

We hope that all children will be able to attend these camps and share in these valuable learning and social experiences.

International Education

Eastern Fleurieu School is dedicated to building global connections and cultural experiences through its International Education Program. Student exchange provides enriching opportunities for both host families and exchange students to engage in cross-cultural experiences.

We welcome international students to the 7-12 Campus every year, from various countries. And we always require host families who will provide a supportive and nurturing environment, offering students a safe place to stay while they experience a new culture, improve their language skills, and engage fully in their educational journey.

Please contact us dl.1884.EFSIntEd@schools.sa.edu.au if you are interested in being a host family.

Homework

We believe our students need to become lifelong learners and that homework needs to be balanced with family life and community involvement. We encourage students to become independent learners who are able to be organized, self-manage their time and ensure deadlines are met in all facets of their life, including schoolwork.

At Eastern Fleurieu R-12 School:

- There will be times when students will be required to complete homework and set tasks outside school hours
- Teachers are expected to provide sufficient time for students to self-manage deadlines
- Homework demands will be progressively greater as students reach higher year levels
- Teachers will ensure that the homework set is achievable and in tune with the student's ability and resources

We believe homework needs to be balanced with family life and community involvement such as:

- Involvement in community programmes or clubs
- Physical fitness and sport
- Helping at home, household chores, looking after siblings
- Mentoring others
- Hobbies and personal interests

Mobile Devices

Students at DfE schools must keep their mobile phones and other personal devices, such as smart watches, switched off and put away while they're at school. The policy also applies when students are attending school camps or excursions. There may be times when teachers give direct permission for a mobile device to be used for a learning activity.

There are certain specific exemptions that can be granted by the Principal, for use of a mobile device. Permission must be sought prior to any device use.

Students who fail to comply with the policy will be followed up through the school's behaviour support procedures.

Further information about the Mobile Devices policies can be found [here](#).

Strathalbyn R-6 Campus

Campus Profile

Welcome

At Eastern Fleurieu - Strathalbyn R-6 Campus, we truly believe our school is a vibrant community full of wonderful, enthusiastic, and caring people. Every child is valued as a unique individual with extraordinary abilities. We provide a safe, supportive, and nurturing environment where students are empowered to reach their full potential, develop a love of lifelong learning, and thrive as leaders of tomorrow.

Our dedicated R-6 Campus staff are committed to building strong, meaningful relationships with students and actively supporting them to become responsible, engaged, and contributing members of the community. We believe this is best achieved through strong partnerships between home, school, and connections with the wider community.

Through classroom programs, students explore our environment, global issues, and the rich and diverse cultures of First Nations peoples. They learn the importance of behaviours that promote acceptance, respect, and appreciation for all people who share our land and planet.

Our school values—Respect, Integrity, Teamwork, and Determination—form the foundation of our school culture. These values are explicitly taught and reflected in everything we do. We hope they are embraced in the children's lives beyond the classroom as well.

We warmly encourage you to take an active role in our school community. Your involvement will be both personally rewarding and invaluable to your child's growth and the success of our school as a whole.

Regards,
Jo Garwood
Director of Primary Education



Strathalbyn R-6: Our Leaders



Ian Kent
Principal



Jo Garwood
Director of Primary
Education



Sophie Frost
Assistant Principal



Mel Pitt
Assistant Principal



Hannah Jenkins
Senior Leader
Inclusion & Wellbeing



Heidi Yard
Wellbeing Leader



Meg Russo
Innovative Pedagogies
Coordinator



Tom Bilney
Innovative Pedagogies
Coordinator



Gareth Allely
Wellbeing Leader

Strathalbyn R-6: Our Site

School Hours

8:25am	Teacher on duty
8:50am	Classes begin
10:40 - 11:05am	Break 1
11:05am - 11:20am	Lunch eating
11:20am - 1:00pm	Classes
1:00pm - 1:30pm	Break 2 (Canteen open and second opportunity for eating)
1:30pm - 3:15pm	Classes (Early finish 2:50pm on Wednesday)
3:45pm	Supervision ends. All students to be off site.

Kiss 'n' Drop

The Kiss 'n' Drop zone runs between the 2 coloured posts on East Terrace each morning, just by the main school gate. This area will allow cars to kiss 'n' drop with the rest queuing in line.

Please remember:

- Please keep the queue moving forward
- Do not leave your car. This is a standing area and will be policed from time to time
- Please keep Tyndale driveways clear at all times, do not queue across them
- If the queue is full, turn right after the crossing and go around the block and try again

Crossing Safety

Our school crossing is manned with trained student monitors and supervised by a teacher. In the interest of safety, please abide by the following:

- Speed limit of 25 km per hour
- Drop children off on the school side of the road in the kiss and drop area
- Each afternoon ensure that children cross the road at the crossing
- Children are not to use the staff car park entrance to enter or leave the school
- Please do not use the staff car park to pick up or deliver children unless there are exceptional circumstances such as illness or an emergency
- Before crossing, please wait for the monitors to instruct you verbally to walk.

Strathalbyn R-6: Information

Breakfast Club

Supported by students and volunteers, our Wellbeing team run a breakfast program in Room 8 every morning. From 8:25 until 8.45am students are welcome to come and share a cup of milo, piece of toast or bowl of cereal.

Canteen

The Canteen is run by our Managers and volunteers. It operates under the Right Bite Policy.

- Canteen is open during Break 2 Monday to Friday
- Lunches must be ordered from the canteen by 9:00am, no late orders will be accepted
- Class monitors collect the lunches and return to class and have 15 minutes eating time after Break 1
- Menu options and price lists are available from the canteen or the front office
- Owing to health regulations, small children are not permitted in the canteen. Consequently, pre-school children may not accompany volunteers

ICT

Eastern Fleurieu School is committed to providing quality ICT resources and learning opportunities for all students. The EFS network of computers and interactive whiteboards are used as an educational tool. The Internet facility is to be used for teaching and learning purposes;

- Research – to find information
- Communication – to send or find information
- Collaboration – to work, and to share with others

An ICT User Policy is an agreement that outlines the terms or conditions Computer Network and Internet use at EFS. Students will sign a new agreement at the beginning of each year.

Library

Our Library has computer-automated operation and children are encouraged to use the system regularly. Children are allowed to borrow up to 5 books for up to 2 weeks. Anyone may borrow from any section of the library but there is a special section that is just for Year 5 and Year 6 students only, because the books there have themes that are more suited to older students.

A library bag is needed before they can borrow, a plastic shopping bag or similar can be used. If a book has been borrowed for more than two weeks, a reminder will be given to bring it back. If it is still not returned, an account will be sent home asking for payment.

Books can be borrowed or returned any day from 8:30am – 8:50am at break time. Classes will also have their own borrowing time each week.

Strathalbyn R-6: Information

Lost Property

Articles of clothing that are found with names are returned to the student, while unnamed clothing is placed in the Lost Property baskets in the front foyer. Parents are urged to mark all clothing and equipment so that lost property can be returned.

Each term the articles are sorted, and donated to the Op Shop. Some items of clothing are washed and recycled for donation to families or for spares.

Music Lessons and Instrumental Lessons

All students at the Strathalbyn R-6 Campus participate in a weekly Performing Arts lesson with our specialist teachers. They participate in a range of activities exploring simple and complex patterns on the drums and percussion instruments, singing a variety of songs and exploring movement through dance.

Through the DfE Instrumental Program we are fortunate to have a wide range of instrumental music options available for our students. If you would like your child to learn clarinet, flute, trumpet, trombone or saxophone, this is supported by a weekly lesson with Peter Doughey and a small hire fee is charged for the hire of the instrument through EFS. For piano or singing lessons, please contact the front office for contact details of our private tutors. The school provides a space free of charge and lesson prices are very reasonable.

Out of School Hours Care (OSHC)

This program is operated by the YMCA of South Australia based at the Strathalbyn R-6 Campus. The YMCA is a non-profit community organisation, currently providing Before School Care, After School Care and Vacation Care programs across Australia.

Please contact centre manager on 0421 562 838 if you would like any further information in relation to the service or the YMCA Holiday Adventure Club Vacation Care Program.

School Concerts & GALA Night

At the end of the year Junior Primary classes celebrate with a class concert. Parents, grandparents and friends are all invited to share in the performance. Our whole school Gala Night is held every "even" year. This is a great family night out where members of the community are invited to purchase goods, listen to student performances and enjoy side show games. This is our major fundraiser for this year.

Strathalbyn R-6: Information

Sport

Children's sport is well catered for. Details are sent home at the beginning of each season. Terms 1 and 4 Cricket and Terms 2 and 3 Football and Netball. Our school is a member of the South Australian Primary Schools Amateur Sports Association (SAPSASA), which involves a large range of sports and requires parent support and commitment.

Sports Day

Sports Day is held in Term 3. Children are divided into 4 sporting houses for Sports Days: McLean (Green), Dawson (Blue), Davidson (Red) and Rankine (Yellow).

All sports are governed by the EFS and SA Junior Sports policies, which provide guidelines for age-level sports involvement.

Sun Smart Policy

The school actively promotes a Sun Smart policy and expects the wearing of appropriate hats (broad brimmed or legionnaire) between 8:50am and 3:30pm each day in Term 1 and from Week 6 of Term 3. Students who do not have a hat will play under the library verandah.

Swimming

Our school is involved in swimming lessons early in Term 1 or Term 4, for 5 days. These lessons are conducted by DfE Swimming instructors. These lessons can follow on from the vacation or private lessons. Swimming lessons are a part of the Health and PE program, aimed at boosting water confidence and safety. As such it is anticipated that all students will take part in these lessons.

Tungaree Gardens

The south eastern corner of our campus has been developed as native bush land. Over a number of years, committed staff have established Tungaree garden as a wonderful wild place for classes to explore and learn about local flora and fauna species. The garden includes an outdoor classroom, bush food trail, possum, bird and bat boxes and a winter wetland.

During the year, Tungaree garden is often open for play sessions during Break 1 and Break 2. This garden provides a wonderful educative opportunity to teach students and teachers alike about the traditional food sources of local Indigenous people as well as providing some tasty and useful produce.

Strathalbyn R-6: Curriculum

Literacy

At Eastern Fleurieu School we recognise the importance of being literate in today's world and every opportunity is provided to support your child to develop the necessary skills to achieve this.

Literacy plays a key role in your child's learning and personal growth. It helps them become confident speakers, creative thinkers, and informed individuals. Through literacy experiences, children learn to express themselves, understand others, and develop meaningful connections with people and the world around them.

In today's digital world, it's essential for your child to learn how to critically evaluate and interpret reliable sources of information, helping them make wise and thoughtful decisions.

Researched-based programs at Eastern Fleurieu School guide our teaching and learning experiences for your child. We understand that children bring with them different levels of language knowledge and exposure, and we aim to nurture and build on their unique strengths and attitudes.

Numeracy

We believe Numeracy is a fundamental life skill that empowers our students to navigate the world with confidence. Numeracy enables us to accurately and confidently apply mathematical thinking and working skills to engage with challenges in many contexts. It helps us innovate, continuously shaping our futures, turning problems into opportunities, and discovering the possibilities of the unknown that will sustain and change our world.

We encourage our students to be resilient, resourceful and reflective in mathematics learning so they are able to problem solve, develop their understanding, and be fluent and flexible in their thinking and reasoning. We encourage our families to partner with us in nurturing and developing our student's numeracy skills by promoting positive attitudes toward mathematics. Learners who feel positively about mathematics, see its value, are prepared to give it a go, seek out challenges, and believe that their abilities as a mathematician are not fixed.

Play and Creative Activity (PACA)

Learning is an active process. PLAY is essential for its ability to stimulate and integrate a wide range of children's intellectual, physical, social and creative abilities. Actively engaging children in their play extends and supports their learning. Using a developmental approach places the child at the centre of the teaching programs and strategies.

Play and project based learning experiences (investigations) are a major pedagogical tool alongside explicit teacher scaffolding, direction and teaching. This approach stresses the importance of ensuring a balanced curriculum of authentic student interests and engagement whilst promoting creativity, imagination and scope for the child to invent and create.

Enterprise

Enterprise is aimed at equipping our Year 4 – 6 students with practical skills and an entrepreneurial mindset to thrive in today's dynamic world. This subject encourages creativity, critical thinking, problem-solving, local and global perspectives and collaboration among our students, preparing them for future challenges and opportunities.

Through Enterprise, students will have the opportunity to explore various aspects of entrepreneurship, including idea generation, market research, business planning, financial management, marketing, and sales. They will also learn about teamwork, leadership, and resilience as they work on real-life projects and initiatives.

Fostering an entrepreneurial spirit from a young age is essential in nurturing future leaders and innovators. Enterprise will not only empower our students to think outside the box but also instil in them the confidence to pursue their passions and turn their ideas into reality.

SHINE: Teach It Like It Is

At our school, we use the SHINE: Teach It Like It Is curriculum to help young people learn about their bodies, relationships, growing up and making safe, respectful choices. The program supports students to understand themselves, consider how their actions affect others and build a positive sense of identity. Through age-respectful learning, students develop confidence, respectful communication skills, decision-making capabilities and strategies for seeking help when needed. They are also provided with accurate and relevant information about puberty, sexual health, emotions, the law and wellbeing. We will run a family information session early in the year to inform and introduce people to the content and curriculum. Teachers will also send through Seesaw the learning intentions for the upcoming weeks sessions to support families continuing the conversations at home.

Connection to Child Protection Curriculum

This program aligns with the Health and Physical Education learning area in the Australian Curriculum, specifically the "Relationships and Sexuality" focus, and works alongside the Keeping Safe: Child Protection Curriculum (KS:CPC), which is mandatory in all South Australian government schools. While SHINE and the Keeping Safe: Child Protection Curriculum (KS:CPC) cover some similar ideas, they each have a different focus. SHINE takes a proactive approach by helping young people build the knowledge and skills that support safe, healthy relationships, while KS:CPC teaches how to recognise unsafe situations and seek help. Both programs are taught in full to ensure children learn how to stay safe, understand their rights, and develop strong, protective strategies. Together, they help build knowledgeable, confident and safe young people.

Strathalbyn R-6: Reporting

Reporting Progress

The children's progress at school is constantly assessed in line with the Australian National Curriculum. Assessment is related to each child's ability and specific areas that have been covered in teaching. This includes observation and work samples as well as tests. Of equal importance to the assessment of academic progress is the area of social, emotional and physical development.

Parents are kept informed of their child's progress through parent/teacher interviews and written reports.

The current program of formal reporting is:

Term 1	Carers night Learning Conversations
Term 2	Semester 1 Report
Term 3	Learning Conversations
Term 4	Semester 2 Report



Parents may request additional discussions at any mutually convenient times.

Strathalbyn R-6: Play Breaks

Breaktimes

Break times are a very important time of our students day, a time to catch up with friends, practice sports skills or enjoy a book or game in the library. We aim to support our students to be safe and engaged at play times.

Play Areas

- Our yard is separated into sections—Junior Primary and Upper Primary playgrounds, asphalt and quiet areas
- Our library is open at break times for students to read, play board games or chat quietly with friends
- Our Quiet Room (Rm 29), is for students to colour in, listen to music or play quiet games to support regulation

Supervision

- At each break we have seven staff monitoring student behaviour. Each yard duty teacher wears a fluoro jacket and carries basic first aid supplies and a walkie talkie to communicate with the Front Office when required

Break Activities

- A range of break time activities are supervised by staff to engage students to develop new skills and support students that are feeling a little isolated. These activities include table tennis in the gym and lawn games

Break-Mate Peer Support Program

- As part of our Citizenship program, Year 5/6 students are trained to act as Break-Mates. They support isolated Junior Primary students, encouraging them to participate in activities and make good decisions in the yard

Strathalbyn R-6: Inclusion & Wellbeing

Wellbeing

At the R-6 Campus, students are able to access a range of adults to support them as required:

- Class teachers: Develop positive relationships with students and families to be the first point of contact for any wellbeing concerns
- Leaders: Work collaboratively with class teachers to build trusting and supportive class environments and shape positive learning communities
- Our Inclusive Education & Wellbeing Team: Available to work with staff, students, families, DfE support agencies and external providers to support our students in all aspects of their wellbeing

Interventions

A variety of interventions are available to students, identified by staff and in partnership with families. These may include programs supporting

- Mental health and wellbeing
- Social and emotional regulation
- Autism Club
- Attendance and engagement with school
- Literacy and Numeracy needs

These are offered on a needs-basis and often form part of a wider Student Development Plan

Special Class

Millindilla is our Special Options class based in Strathalbyn. The students in this class are allocated through the Special Options placement process coordinated by our regional Support Services Team.

Students in Millindilla participate in a range of subject areas, accessing expert teachers, specialist teaching spaces, along with highly-trained support staff. Students in the Special Options class can access mainstream classes if appropriate and are included in school activities, excursions and events.

Leadership Opportunities

As students move through the primary years they can participate in many opportunities to develop their leadership skills. These include School Captains, Sports House Captains, Crossing Monitors, and Break-Mates.

Buddy Class

Classes may select another class to develop and foster relationships across different ages. They enjoy different activities such as cooking, sport, computing and utilising the playground equipment.

Strathalbyn R-6: Family Involvement

Assemblies

Whole School assemblies are an integral part of our school program and are held regularly. Parents are most welcome to attend these assemblies. These assemblies are child-oriented and they are based on the whole range of children's work across the curriculum.

Whole school assemblies are held in Weeks 5 and 10 to present competencies awards and recognition of achievements.

Carers Night

Carers Night, held early Term One is an opportunity to come and visit your child's classroom, meet your child's teacher and specialist staff. All classrooms are open for families to move between and also an opportunity to visit visit areas such as the NOOK, Artroom and Wellbeing Room.

Parent Groups

Parents are invited to become actively involved in the school in many ways:

Governing Council

Be able to participate and take part in the affairs and decision making of our school, while representing the wider parent group.

Parent Club

Work in conjunction with the School Governing Council for the general benefit of our students and school.

Volunteers

Listening to reading, helping on excursions/camps, writing and reading conferences, assisting with computers, coaching sporting teams and involvement in individualized student programs.

Volunteers

It is a DfE requirement that most volunteers need to undertake a Working With Children Check (WWCC) as well as [Responding to Risks of Harm, Abuse and Neglect](#) (RRHAN-EC) training. Please see Front Office staff for the necessary paperwork if you would like to volunteer at the campus.



Ashbourne Campus

Campus Profile

Welcome

EFS Ashbourne Campus is a small campus that provides students with a unique and specialised learning experience in a caring and nurturing environment. We are situated in the picturesque Ashbourne Valley, 13km west of Strathalbyn and 12km south of Meadows. Ashbourne is a small farming community set amongst Red Gum-studded hills, famous for its beautiful fresh fruit and vegetable produce.

We are dedicated to providing high quality, innovative and relevant educational programmes which cater for the diverse needs of our learners.

Our teachers are committed educators who share a vision of excellence through unity and who nurture and support students to be successful members of society. We aim to improve student learning outcomes by offering students an engaging and challenging curriculum and by ensuring that individual student needs are identified and met. Learner engagement and well-being is a priority and we ensure all students learn in a safe, supportive and stimulating environment.

We aim to make a difference:

- Dedicated teachers and support staff that give each child the attention they need & deserve
- Small class sizes that caters for individual learning needs
- Integrated focus on outdoor learning and environ-mental education
- Access to resources, events & activities across all EFS Campuses
- A safe, happy & family-oriented Campus
- Effective transition programmes for both pre-school to school and from Year 6 to Year 7

This small rural campus, set in magnificent grounds, provides a safe, caring family-centred environment for students from Reception to Year 6. There are three classrooms plus an art room and well stocked library, linked electronically to the other campuses. Each classroom has a set of laptops, all with internet connection. There are beautiful grassed and garden areas, extensive on-site scrubland, as well as a well used tennis and basketball court.

Welcome to our wonderful campus!

Rebekah Fahey
Head of Ashbourne Campus

Ashbourne: Our Staff & Site



Rebekah Fahey
Head of Campus

School Hours

8:25am	Office opens
8:25am	Teacher on duty, no students to be on site before then
8:50am	Classes begin
10:40 - 11:10am	Recess break
12:50 - 1:30pm	Lunch break
3:15pm	School dismissal (Wednesday 2:50pm early finish)
3:45pm	Supervision ends, all students must be off site



Ashbourne: Information

Breakfast Program

Our Pastoral Care Worker runs a breakfast program in the Art room every Tuesday morning from 8.25am. Students are welcome to come and share a cup of milo and piece of toast.

Bush School

Bush school on Tuesdays are a highlight of each week. Students participate in outdoor learning activities which promote awareness, engagement and connection to our environment and community. Our on-site native scrub area provides all children with the opportunity to play and learn in a natural outdoor environment. Students from other EFS campuses and schools regularly visit us and our students are accomplished environmental leaders and mentors

Emergencies

School fire drills involving evacuation or invacuation will be conducted at regular intervals.

In the event of a fire inside the school building the school will be evacuated by the safest exits to assemble on the main school oval. If directed to do so by the CFS, students may retreat to the Greenman Inn carpark until the fire is out and/or they can be safely taken home via bus or be picked up by their parents or emergency contact person.

On days that are listed as Catastrophic for the Mt Lofty Ranges region, Ashbourne Campus will be closed.

Library

- Our Library has computer-automated operation and children are encouraged to use the system regularly. Children are allowed to borrow books for up to 2 weeks
- Junior Primary students 2 books, Middle and Upper Primary students, 3 books
- A library bag is needed before they can borrow. A plastic shopping bag or similar can be used as a library bag. If you have a book for more than two weeks, you will be given a reminder to bring it back. If you still do not return it an account will be sent home asking for payment



Ashbourne: Information

Lunches

On Wednesday and Friday, students are welcome to bring in their own hot lunches to be warmed up in the oven. Food needs to be in a labelled, suitable oven-proof container or wrap, and must be placed in the hot lunch basket (admin/art room foyer).

Ice Blocks are available for 50c each on Thursdays during Terms 1 and 4. Payment can be made on the day or in advance.

Music Lessons

Students participate in a weekly music lesson with our music teachers. They participate in a range of activities exploring simple and complex patterns on the drums and percussion instruments, singing a variety of songs and exploring movement through dance.

Sports Day

Ashbourne Campus joins with students from Langhorne Creek and Milang in a combined sports day. Three teams are formed: Finniss, Bremer and Angas—named after three rivers in the area. Students participate in tabloid events, running and games. Many families support children by attending the day and having a picnic lunch with their children. It is held at each campus on a rotational basis.

Student Absence

Please notify the school by phone, text message to **0428 242 119** or note, of reasons for student absences, e.g. illness, family reasons, etc. This is important so we can record accurately the reason for your child's absence.

Student Creation Market

Students from Ashbourne, Langhorne Creek and Milang work on a project in their classes incorporating all their Deep Learning skills. This culminates in a Market day where they are able to gather together and sell their creations and raise money for a charity decided by the host campus.

Sun Smart Policy

The school actively promotes a Sun Smart policy and expects the wearing of appropriate hats (broad brimmed or legionnaire) between 8:50am and 3:30pm each day in Term 1 and Term 4. Students who do not have a hat will play under the veranda or in the shed.

Langhorne Creek Campus

Campus Profile

Welcome

The first school in the town, the Langhorne's Bridge School, is mentioned in the Education Gazette List of Schools for 1858. After the passing of the Education Act, 1875, schooling continued in the original building, with the name changed to Langhorne's Creek School. In 1952 a new school was opened on the present site. Numerous additions and renovations have been made to the buildings and grounds since then.

The Langhorne Creek Campus of the Eastern Fleurieu School became a reality in 1996.

Children's learning is enhanced by the relationships and shared responsibility between teachers, students and parents. Parents are partners in learning with the student and teacher. Learning is a process leading to change in individuals. Students who are successful learners register the importance of their own contribution and responsibility for their actions. Student driven learning is more likely to be effective and meaningful than teacher or parent driven learning. I therefore urge you to become involved by listening, supporting and encouraging your child and by sharing information and working with your child's teacher. Evidence suggests parental involvement empowers children's learning and has an impact on learning success.

We look forward to welcoming you all to our wonderful campus!

Les Cameron
Head of Langhorne Creek Campus



Langhorne Creek Campus: Our Staff & Site



Les Cameron
Head of Campus

School Hours

8:00am	Office opens
8:25am	Teacher on duty, classrooms open
8:50am	Classes begin
10:40 - 11:10am	Recess break
1:00 - 1:30pm	Lunch break
3:15pm	School dismissal (Early finish 2:50pm on Wednesday)

School Buses

Two buses provide transport for students to attend school – one bus follows the Lake Plains route, and the other bus, the Mulgundawa run which brings students in from the Wellington Road area.

The school buses depart at 3.55 p.m. each day, with the exception of Wednesdays at 3.30pm and on the last day of each term at 2.55pm



Langhorne Creek: Information

Breakfast Program

Our Pastoral Care Worker runs a breakfast program every Thursday morning from 8.25am. All students are welcome.

Emergencies

EXTERNAL FIRE

The Langhorne Creek Memorial Hall is deemed a safer refuge in the event that the school or community is threatened by fire. The students and staff will move to Langhorne Creek Memorial Hall if instructed to do so by the Country Fire Service. Students may then be collected by their parents/carers.

FLOOD

In the event of possible flooding at Langhorne Creek, the campus will be in consultation with the Langhorne Creek CFS to determine the extent and families will be notified if this will have any effect on bus runs and school closures. For a full copy of our Fire or Flood Policies please contact the Langhorne Creek Campus Office

Lunches

- Lunch price list from the shop are sent out to all families at the beginning of the year
- Lunch baskets are provided in each classroom for the lunch orders
- Lunches are collected and returned to the school at lunchtime each day
- During terms 2 & 3 students are able to bring along sandwiches/rolls in reusable containers for toasting on Tuesday, Wednesday and Thursdays

Parent Involvement

At the Langhorne Creek Campus parents contribute and are involved in all the following ways:

- Campus Advisory Committee
- Reading and writing support
- Craft activities
- Cooking
- SAPSASA Sport
- Fundraising
- Grounds Development
- Excursions and Camps
- Seed collecting
- Working bees
- SRC support
- Sports Day
- Vegetable/Herb Garden
- Tree growing and planting
- Student transport

Sports Day

Langhorne Creek Campus joins with students from Ashbourne and Milang in a combined sports day. Three teams are formed: Finniss, Bremer and Angas—named after three rivers in the area. Students participate in tabloid events, running and games. Many families support children by attending the day and having a picnic lunch with their children. It is held at each campus on a rotational basis.

Langhorne Creek: Information

Student Absence

Please notify the school by phone, text message to **0431 501 183** or note, of reasons for student absences, e.g. illness, family reasons, etc. This is important so we can record accurately the reason for your child's absence.

Student Creation Market

Students from Ashbourne, Langhorne Creek and Milang work on a project in their classes incorporating all their Deep Learning skills. This is culminated in a Market day where they are able to gather together and sell their creations and raise money for a charity decided by the host campus.

Sun Smart Policy

The school actively promotes a Sun Smart policy and expects the wearing of appropriate hats (broad brimmed or legionnaire) between 8:50am and 3:30pm each day in Term 1 and from Week 6 Term 3. Students who do not have a hat will play under the veranda or in the lunch shed.

Hats are available for purchase at the Front Office.



Eastern Fleurieu
R-12 School



Milang & Langhorne Creek R-6 Campuses

Our Playgroups cater to families with children from birth to 5 years.

Playgroup is a great way to enjoy some quality time with your child/ren, to help them learn through play and to connect with other families within your community.

With varying programs each Term, we endeavour to provide activities that challenge stimulate and entertain!

Attendance is FREE.

Milang Playgroup is run every Tuesday morning during the school term from 9-11.30am.

Langhorne Creek Playgroup is run every Friday morning during the school term from 9-11.30am.



Milang Campus

School Profile

Welcome

Milang Campus offers a safe and supportive learning environment in which students have access to an exciting and engaging education from Reception to Year 6.

As a small school we pride ourselves on our collaborative approach to learning both in the classroom and the yard. Our students are confident learners and we are able to nurture their individual strengths through small class sizes and excellent teaching and support staff.



At Milang, currently we have two classes of Reception to Year 6 students. Our aim is to develop confident and capable students willing to make a positive contribution to their community and the world. Each year we work closely with our local community to provide opportunities for our students to engage in real-world learning.

Our integration into the EFS 'multi-campus school is an important source of our strength. It offers us more and higher quality resources and links than we might otherwise have available to us.

We have high quality teaching and administrative staff whose contributions are vital to the effectiveness of our campus as a place to learn. Our children graduate to the 7-12 Campus in Strathalbyn and broaden their horizons as they do so. The nurturing and attention they receive at the smaller site ensure they have the skills to adapt easily to the larger campus. We are proud to be part of this innovative and effective regional school.

Susannah Cook
Head of Milang Campus

Milang: Our Staff & Site



Susannah Cook
Head of Campus

School Hours

8:25am	Office opens, teacher on duty
8:50am	Classes begin
10:40 - 11:05am	Recess play break
11:05 - 11:20am	Recess eating time
1:00 - 1:30pm	Lunch break
3:15pm	School dismissal (2:50pm early finish on Wednesday)

School Buses

- Our Campus is serviced by one bus operated by a local contractor. Students living in the Milang community who are more than five kilometres from the campus and students who live in the nearby community of Clayton access the bus route.
- The morning bus arrives at the Campus at 8:00 a.m. Students are supervised by a teacher. After school students are supervised in the yard by a teacher until the arrival of the bus at the Campus at 3:45 p.m. (3.20pm on Wednesdays)



Milang: Information

Camps and Excursions

Excursions are undertaken to complement class work. As Milang Campus is part of the larger Eastern Fleurieu School, our students are often involved in 'whole school' activities or performances.

Whole school camps are held each year. We also regularly visit our local attractions, including: museums, historic buildings, wetlands, cemetery, recycling depot and nature walks. Students have also been involved in geocaching and mapping of the local area.

Cross Age Activities

A culture of positive interaction between and across all age groups is evident at Milang Campus. Our small number of students and programmes which foster these relationships are important contributing factors. Students participate in cross age or buddy class activities and peer tutoring programmes. At break times this cooperative culture is evident as children of all ages play together, enjoy each other's company and look out for each other.

Leadership

Leadership skills are developed at Milang through class meetings and Year 6 groups. Our school captains undertake extra duties, such as leading assemblies, welcoming visitors and speaking at events.

Milk Bottle Regatta

Held once a year in Term 4 this is a great day held down at the Foreshore at Milang. Other campuses are invited to attend and participate in racing their rafts that they have been building during the term.

Sports Day

Milang Campus joins with students from Ashbourne and Langhorne Creek in a combined sports day. Three teams are formed: Finniss, Bremer and Angas—named after three rivers in the area. Students participate in tabloid events, running and games. Many families support children by attending the day and having a picnic lunch with their children. It is held at each campus on a rotational basis.

Student Creation Market

Students from Ashbourne, Langhorne Creek and Milang work on a project in their classes incorporating all their Deep Learning skills. This culminates in a Market day where they are able to gather together and sell their creations and raise money for a charity decided by the host campus.

Milang: Information

Student Absence

Please notify the school by phone, text message to **0437 902 709** or note, of reasons for student absences, e.g. illness, family reasons, etc. This is important so we can record accurately the reason for your child's absence.

Sun Smart Policy

The school actively promotes a Sun Smart policy and expects the wearing of appropriate hats (broad brimmed or legionnaire) between 8:50am and 3:30pm each day in Term 1 and Week 6 Term 4. Students who do not have a hat will play in the lunch shed.



Milang & Langhorne Creek R-6 Campuses

Our Playgroups cater to families with children from birth to 5 years.

Playgroup is a great way to enjoy some quality time with your child/ren, to help them learn through play and to connect with other families within your community.

With varying programs each Term, we endeavour to provide activities that challenge stimulate and entertain!

Attendance is FREE.

Milang Playgroup is run every Tuesday morning during the school term from 9-11.30am.

Langhorne Creek Playgroup is run every Friday morning during the school term from 9-11.30am.

Strathalbyn 7-12 Campus

School Profile

Welcome

At the Strathalbyn 7-12 Campus, we have seen tremendous growth and positive change, in a vibrant and dynamic environment that fosters learning and development. The Eastern Fleurieu 7-12 Campus is a place where innovation meets tradition, and where every student's potential is nurtured and celebrated.

Our commitment to inclusion and public education shines through in everything we do. We take pride in our diverse community and the unique strengths each student brings to our school. By working closely with families, we create a supportive network that helps students engage deeply in their education and achieve their goals. Our compassionate and flexible approach, coupled with a culture of high expectations, ensures that every student can find a successful pathway into the world of work and beyond.

We understand that wellbeing is key to educational success and a child's ability to thrive. That's why we are dedicated to a holistic approach that addresses every child's individual needs, fostering an environment where every student can flourish. Our school values of Respect, Integrity, Determination and Teamwork are evident in our daily routines and underpin our Code of Conduct and expectations of EFS students as citizens in the broader community.

The 7-12 campus is able to offer an extensive range of curriculum choices to all students from Year 7 through to Year 12. Students begin studying the South Australian Certificate of Education (SACE) in Year 10 and complete their SACE over the following two years of study. As part of the Southern Adelaide and Fleurieu Secondary School Alliance (SAFSSA) and other associated Vocational and Educational Training (VET) organisations, our students are able to access a large variety of VET courses, both on our site and at other sites around the area.

We also offer a broad range of extra-curricular activities including sport, instrumental music and lunchtime clubs to cater for the diverse interests of our students. House culture is strong at the 7-12 Campus and there are many opportunities for interhouse competition enabling staff and students to promote house pride and a positive, connected school culture.

We welcome our families to join us for special events, celebrations and learning showcases throughout the year.

Vanessa Coker
Director of Secondary Education

7-12 Campus: Our Leaders



Ian Kent
Principal



Vanessa Coker
Director of Secondary
Education



Merryn Gomez
Assistant Principal
Inclusion & Wellbeing



Narelle Lakin-Hall
Assistant Principal
School Operations



Holly Stevens
Assistant Principal
Middle Years (Acting)



Keegan Taylor
Assistant Principal
Senior Years



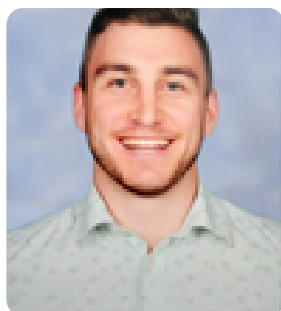
Tom Neville
Senior Leader
Middle Years



Curtis Perrey
Senior Leader
Middle Years



Hannah Playford
Senior Leader
Middle Years



Henry Johnson
Senior Leader
Senior Years



Britt Thompson
Senior Leader
Senior Years



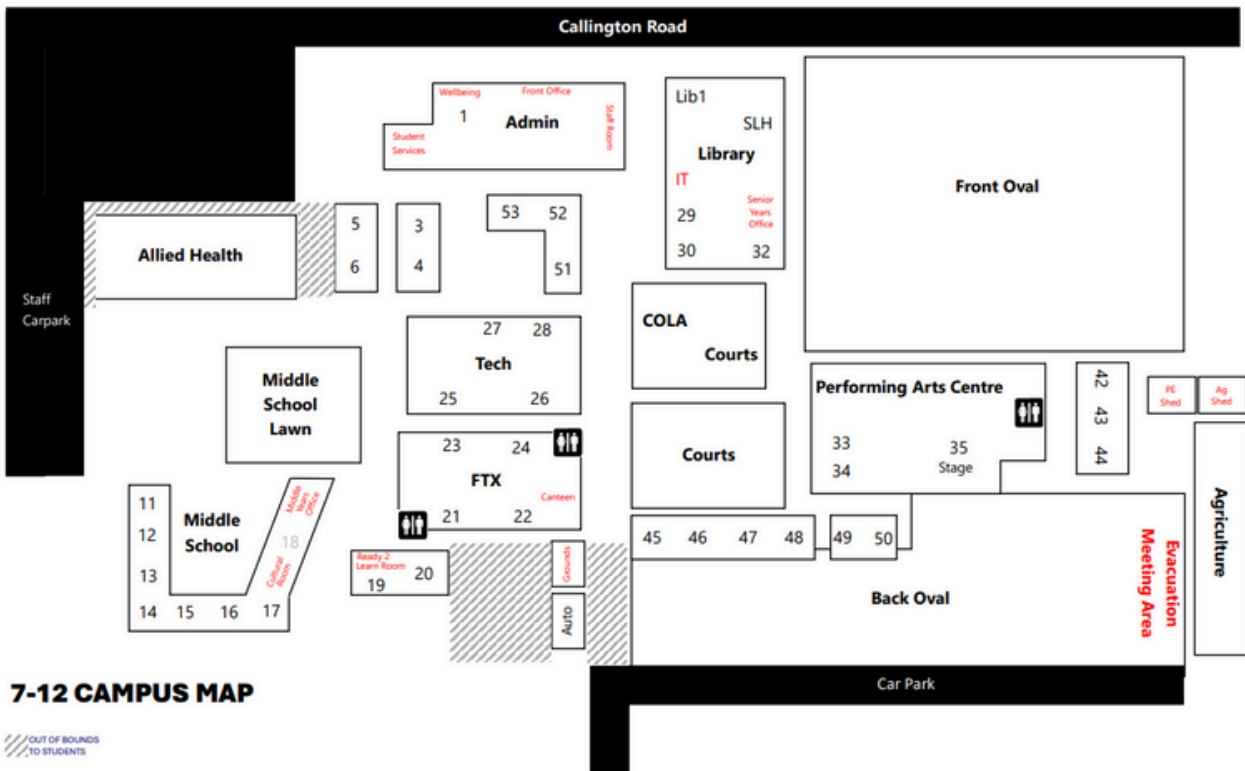
Jen Turpin
Senior Leader
Senior Years

7-12 Campus: Our Site

School Hours

Yard duty supervision starts at 8:30am and concludes at 3:45pm

	Monday	Tuesday	Wednesday	Thursday	Friday
8:30 – 8:50	Yard Duty Supervision	Yard Duty Supervision	Yard Duty Supervision	Yard Duty Supervision	Yard Duty Supervision
8:50 – 9:00	Home Group	Home Group	Home Group	Home Group	Home Group
Block 1 9:00 - 10:45	Line 1	Line 4	Line 7	Line 3	Line 6
Recess 10:45 - 11:05	RECESS – 20 Minutes				
Block 2 11:05 - 12:50	Line 2	Line 5	Line 1	Line 2	Line 5
Lunch 12:50 - 1:30	LUNCH – 40 Minutes				
Block 3 1:30 - 3:15	Line 3	Line 6	Line 8 Finish 2:50pm	Line 4	Line 7



7-12 CAMPUS MAP

/// OUT OF BOUNDS
TO STUDENTS

7-12 Campus: Student Services

Student Services

Student Services are the first point of contact for both students and families for any questions or concerns. If needed, they can direct you to the following staff as required:

- Homegroup Teachers
- Subject Teachers
- First Nations Education Team
- ICT Support Team
- Senior Leaders - Middle Years
- Senior Leaders - Senior Years
- Inclusive Education & Wellbeing Team
- Finance Team

The Student Services team also support with:

- Fee enquiries and payments
- Updating contact information
- Student sign in and out
- Absence notification
- Spare uniform
- Timetable enquiries
- Excursion paperwork and information
- First Aid for students
- Wellbeing appointments
- Mobile phone and device confiscation
- Medication dispensing as required
- Bus enquiries

Absences

During morning Home Group, rolls are marked, and any student not present will be noted as 'absent unexplained.' An automated SMS will then be sent to the first named parent/carer (PG1).

The SMS system operates solely through text messages, with the dedicated number being **0488 063 063**. If you require a conversation with a staff member in person or the matter is urgent, please contact the Student Services Office at the 7-12 Campus by calling (08) 8536 2455.

Under the SA Education Act, parents/carers are responsible for the regular attendance of all children in their care between the ages of 6 and 17 years. There are legal implications for those parents/carers who are unable to demonstrate they are meeting this responsibility. Home Group teachers will contact families regularly if reasons for absences are not provided to Student Services at the time of absence.

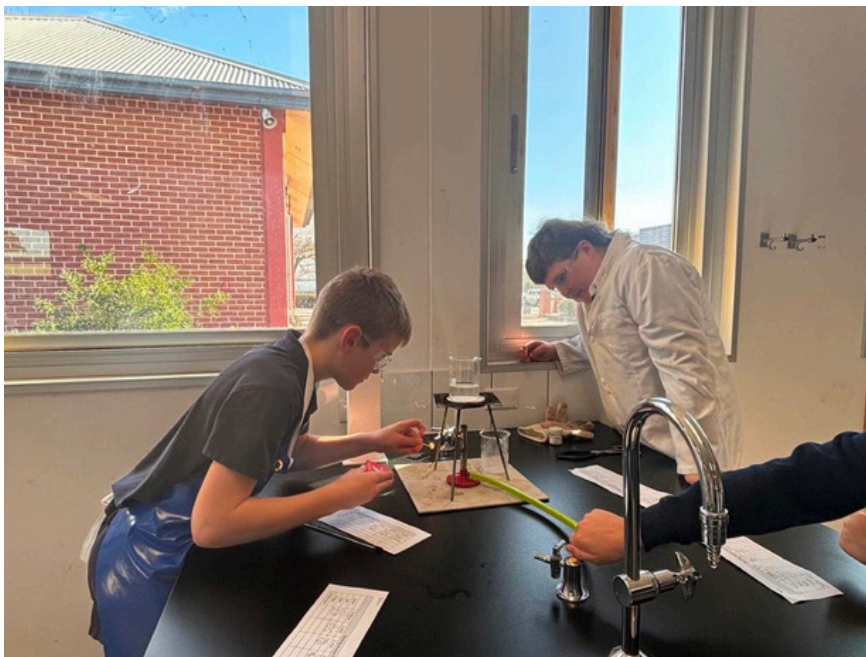
7-12 Campus: Student Services

Students Signing In and Out

- All students arriving late or leaving early must sign out via Student Services
- No students are able to sign out without PRIOR parent/carer communication and school approval
- Student Services staff will not contact families about student permission to sign out except in the case of injury or illness
- Communication about students signing out MUST go via Students Services, not through students' personal mobiles which are not in use during the school day
- Students are not permitted to sign out at lunchtime to purchase lunch elsewhere and we ask that families do not expect permission to be given for this.

Leaving School or Transferring Schools?

Student Services staff must be notified of any intention to leave or transfer, prior to the last day of attendance. Legally, all young people under the age of 17 must be engaged in an approved learning program, including traditional secondary schooling, TAFE courses, apprenticeships, traineeships and employment all of which require an approval from the Minister for Education. All these options require specific paperwork and Student Services Office staff are able to assist.



7-12 Campus: Curriculum

The 7-12 campus is able to offer an extensive range of curriculum opportunities to all students from Year 7 through to Year 12.

In Years 7 and 8, students study a full load of subjects from all curriculum areas, taught by specialist teachers in purpose-built learning spaces. By Years 9 and 10, students are able to choose some elective subjects, in line with their pathways and interests.

Students begin studying the South Australian Certificate of Education (SACE) in Year 10 and complete their SACE over the following two years of study.

As part of the Southern Adelaide and Fleurieu Secondary School Alliance (SAFSSA) and other associated Vocational and Educational Training (VET) organisations our students are able to access a large variety of VET courses, both on our site and at other locations around the area.

For more detailed information about curriculum offerings and other pathways information, please see the [Curriculum Handbook](#).

7-12 Campus: ICT

Eastern Fleurieu R-12 School is dedicated to offering students an engaging learning experience that incorporates the growing role of digital technologies in our world. These technologies provide new ways for students to connect, demonstrate understanding, think creatively, solve problems, and work together.

Student Laptops

At the 7-12 Campus, all students must have their own laptop. It must be brought to school each day, fully charged.

Students starting with us in Year 7 in 2026, are highly encouraged to make use of the School Supplied Laptop Program (SSLP). This program is the preferred system for all DfE schools, including here at EFS. The program streamlines the process of choosing, purchasing, and maintaining a laptop. It ensures all students have access to the same software, simplifies any repairs needed and creates equity amongst students.

More information can be found about the SSLP program [here](#).

For students in Years 9 - 12 in 2026, we will be continuing with our Bring Your Own Device (BYOD) program. Devices must meet certain requirements and families are encouraged to purchase one of the pre-approved laptops available.

More information can be found about the BYOD program [here](#).

Daymap

Our whole school learner management system is Daymap. It provides families and students with:

- All reports (indicator, progress or achievement)
- Attendance information, both daily and for individual classes
- Lesson plans, resources, assessments and due dates
- Timetables
- School bulletin notices
- Absence notifications
- Direct messaging to teachers

Parents have access via the Daymap Connect Parent Portal. This can be done online or by downloading the free app.

Instructions for logging in can be found [here](#).



7-12 Campus: Health & Safety

Breakfast Club

Breakfast Club is run by the Food and Hospitality teachers every morning from 8:30am, in the FTX space. Breakfast Club is open to any student to enjoy a variety of hot or cold choices to ensure they are ready to start their day with everything they need to be successful.

First Aid

Student First Aid is provided through the campus Student Services Office. Injured or unwell students should report to the Student Services Officer who will administer first aid, contact parents/carers and complete required DfE administration. Students should not contact parents/carers themselves to organise collection from school.

Medical Conditions

Parents/carers are kindly requested to communicate any specific medical needs in writing to ensure appropriate care can be provided. All medications required on campus must be registered and stored at the Student Services Office.

All students with a known health or medical issue, must have a Health Care plan submitted to the school. Student Services staff have more information about these requirements.

Prohibited Items

In consideration of the wellbeing and safety of everyone within the school community, certain items are not allowed on school grounds. These include aerosol cans, such as spray deodorants and body sprays, which can pose risks to individuals with respiratory issues. The school will confiscate these items if brought onto school grounds.

Illicit substances, cigarettes and vapes are prohibited on school grounds in accordance with state regulations. This applies to all individuals, including students, staff, and visitors. Students are not permitted to use or possess cigarettes or vapes while at school or when representing the school in the wider community, such as during sporting events or excursions, or when in school uniform in the community after school hours.

Energy drinks pose a significant health risk to young people and are not permitted at school. Energy drinks will be confiscated from students if found on school grounds.

It is important to note that our school is committed to providing a safe and supportive learning environment. The possession, use, distribution, or being under the influence of alcohol, illicit drugs, and other prohibited substances is strictly prohibited on school grounds.

7-12 Campus: Information

Canteen

The 7-12 Campus has a canteen with a wide variety of delicious hot and cold food available. Students are able to pre-order their food (preferred) or choose from the wide variety of options at recess and lunch time. The canteen is not open to students during lesson time. Payment is made by cash or via EFTPOS. A link to the menu and ordering information can be found [here](#).

Library

Our 7-12 Library is the hub of our school. It serves as the space for students to read, play, learn, study and regulate themselves throughout the day. It is also the home to our IT Support team and where students can get support with research and resources for assessment tasks.

Lunchtime Clubs

Teachers and SSOs often possess a wide range of hobbies and passions, and some of them share these with students in lunchtime clubs. From reading to gaming, music to Lego and agriculture to performing arts, there's something for every interest and every student. The ever-changing list of clubs available evolves around student interests and is promoted regularly to students via the Daymap bulletin.

Extra-Curricular Sport

There are a large number of opportunities to participate in extra-curricular sport, outside of PE lessons. We take teams to compete in a variety of competitions and events, such as AFL, Athletics, Basketball, Cricket, Netball, Soccer and many more. We also have a number of staff vs student and inter-house competitions through the year.

Sports Day

Every year in Term 1, the 7-12 Campus holds our Sports Day, with students (and staff!) competing for their House. While a lot of the focus is on traditional Athletics events, there are a variety of other activities on offer throughout the day, all of which earn house points and give all students the opportunity to participate and contribute to the performance of their house.

Instrumental Music Lessons

At our campus we are very fortunate to have a wide range of instrumental music options available for our students. If you would like your child to take piano, clarinet, flute, trumpet, trombone, saxophone or singing lessons, please contact the front office for contact details of our teachers. The school provides a space free of charge and lesson prices are very reasonable. Students participate in a weekly lesson and a small hire fee is charged for the hire of the instrument.

7-12 Campus: Student Expectations

Student Handbook & Code of Conduct

At the start of each year, students receive the electronic Student Handbook. It gives new students an introduction to important aspects of EFS processes and expectations, and gives existing students a refresher course.

Importantly, it includes the Student Code of Conduct (see the next page), which is a snapshot of the school values and the expectations we have of students on a daily basis.

Behaviour Support

When required, there are a number of ways that staff and leaders at the 7-12 campus support students with their behaviour and choices.

Work Catch-Up

- If students had the opportunity and necessary support to complete set tasks in class but do not complete them, then teachers may set a Work Catch-Up session.
- Teachers may choose to supervise students in their classroom to complete the work.
- Alternatively, students may be asked to report to the library at the start of lunch for work catch-up. Students who fail to complete the learning task, or do not attend the allocated session, will move to the second incident of work-catch up and parent contact will be made.

Community Service

- In the case of vandalism, littering or other minor issues, Community Service can be issued to help a student to make amends for their actions as part of a restorative process.
- Where possible, students will be asked to rectify the specific issues they are responsible for.
- For more serious matters, or longer-term service, activities can be arranged with Leaders or Groundspersons, and may include cleaning, organising, recycling, maintenance of learning spaces (e.g. ovals and workshops) and other activities.

Focus Referral/ 3 Step Warning Process

- Focus referrals are used when student behaviour is persistently uncooperative, interferes with the rights of others, shows ongoing indifference to learning or is disruptive to the learning of others.
- When students receive a 1st warning there will be clear, explicit and simple instructions about what needs to occur to receive no further warnings.
- A 2nd warning may include a conversation outside the room and opportunity to Take 5/use R2L Room.
- A 3rd incidence may mean that a student is asked to go to Focus (in the Senior Learning Hub in the Library) to debrief, complete a reflection activity or continue their assigned learning task under supervision. Parent contact will be made by the issuing teacher and further action take as required.

1

Safety

For your safety...

- EFS staff must be aware of your location from when you leave your parents' care.
- If you use the school bus, come directly into the school and stay for the day.
- If you need to leave school grounds for any reason, seek permission and sign out through Student Services.
- Keep away from out-of-bounds areas such as car parks, the farm, areas under construction or behind buildings.
- Look out for your mates, if you see something unsafe, speak up or find someone to help.

STUDENT CODE OF CONDUCT

Eastern Fleurieu School has high expectations of students in an inclusive, safe and enjoyable learning environment. We look forward to your contribution as a member of our school.

All rules and expectations are to keep you physically and psychologically safe. You have a responsibility to uphold the Student Code of Conduct which is outlined here.

2

Respect

- Be kind to everyone, understanding that we all have different experiences.
- We're here to support each other even when things are tough.
- Show consideration and politeness in your interactions with staff, students and visitors
- Look after school facilities, each other's belongings and the environment.
- Avoid any actions that might harm or damage what belongs to others.
- Respect others' choices, as we're all unique.
- If there's a problem, try to talk it out calmly.

3

Integrity

- Do your own work honestly, and if you're struggling, let someone know.
- Use devices responsibly, being aware of how they might affect others.
- Let's create a positive and safe digital space together.
- If you find some lost property, hand it in to school staff or return it to the owner.
- Avoid unsafe behaviours, especially in unsupervised areas like bathrooms.
- Own your mistakes, address conflicts respectfully and find solutions to help everyone move on.

4

Determination

- Keep going, even when things get tough.
- Stay on track and avoid distractions from your goals.
- Bounce back from challenges and learn from them.
- Put in consistent effort; your hard work pays off.
- Show initiative by taking the lead in making things happen.
- Be flexible and adjust when things change.

5

Team Work

- Collaborate with classmates, teachers and SSO's, and the wider community.
- Engage in group work/discussion, exchange ideas, and provide constructive feedback.
- Work together and use each others' strengths.
- Foster an inclusive environment where everyone feels valued and heard.
- Communicate openly, listen actively, and be open to others' ideas.
- Wear the correct uniform together and represent the school positively when in the community.



More safety tips...

- If you bring a bike or a scooter to school, store it in the bike racks provided.
- If you drive to school, use appropriate parking areas and ensure we have your vehicle details.
- Leave valuables at home.
- Leave dangerous and prohibited items at home.
- If you are offered illicit substances (such as vapes), stay away and report it.
- If you witness or experience harassment or bullying, report it.
- Use the ovals for ball games and physical activity.
- Avoid tackling and rough physical interactions at school.

DAILY ROUTINES AND EXPECTATIONS

To provide a safe, predictable and enjoyable learning environment, there are some specific expectations that need to be followed each day, by everyone.

You will find detailed school policies in the next section that we ask you, and your parent or carer, to read and acknowledge them. You will receive a form to sign in Week 1 to show you agree to follow school policy.



Getting ready to learn

- Attend regularly - we love to see your face at school every day.
- If you miss out on breakfast, attend Breakfast Club.
- Greet your friends in Home Group morning circle and make everyone feel welcome.
- Bring equipment for learning (including a fully charged laptop, books, stationery and water bottle).
- Wear the correct uniform so you don't have to waste time getting changed.
- Be on time to class and follow the routines for a smooth start. Use breaks for eating, drinking and toilet trips - not class time.

Your mobile device and school laptop



- You are not permitted to use your phone at school between 8.45am and 3.15pm.
- Switch off your phone and store it safely in your school bag.
- If you leave class for any reason, your phone must remain off and in your bag.
- Air pods, headphones and earphones must not be used between 8.45am and 3.15pm
- Avoid confiscation and other consequences by following these expectations.



Duty of Care

Always seek permission from your class teacher if you need to visit Student Services during lesson times...

- If you are unwell, report to Student Services who will assist you.
- Student Services can contact your parent or carer by phone if necessary.
- If your parent or carer needs to contact you or collect you during the school day, they can call the school on 8536 2455.
- You will not be permitted to leave school grounds during breaks for the purpose of buying lunch.

When things go wrong...



- We know that everyone makes mistakes; our restorative behaviour support processes are in place to help you repair harm that may have happened and move on positively.
- School staff and other students may report or challenge behaviours that are not in line with our core values, or are unsafe.
- You can expect to receive warnings for behaviours that negatively affect others or interrupt learning.
- Continued behaviours of concern will result in you being offered opportunities to correct your mistakes or repair relationships through restorative processes, community service or other consequences in line with the DfE Behaviour Support Policies.



7-12 CAMPUS

2026 Stationery Requirements

All stationery must be named, along with all items of uniform in order to facilitate their return if lost/found. Covering of workbooks is optional but must be appropriate.

Students are expected to:

- Bring the required equipment to every lesson
- Not have graffiti or other inappropriate wording/drawings in/on their equipment
- Show pride in their learning by keeping workbooks organised, neat and presentable
- Glue any loose sheets/handouts into their books
- Keep electronic file storage organised and tidy on school provided OneDrive
- Bring their laptop to school fully charged each day and have the charger available during every learning block

Details of stationery requirements for all year levels can be found here: [7-12 Stationery](#).