

2025
SEASON



HERE *on the* FLIGHT PATH *by* NORM FOSTER

ONE GREAT THEATRE,
TWO GREAT LOCATIONS

PORT DOVER AUGUST 27 - SEPTEMBER 13

PORT COLBORNE SEPTEMBER 17-28

WRITTEN BY NORM FOSTER | DIRECTED BY DEREK RITSCHER

LIGHTHOUSE
FESTIVAL

HOME OF THE CANADIAN SENSE OF HUMOUR
[LIGHTHOUSE THEATRE.COM](http://LIGHTHOUSETHEATRE.COM) | 1-888-779-7703

ARTISTIC DIRECTOR: JANE SPENCE | EXECUTIVE DIRECTOR: NICOLE CAMPBELL

Presenting
Sponsors



THE VIOLA-SALTER GROUP
ScotiaMcLeod, a division of Scotia Capital Inc.
Scotia Wealth Management

Supporting
Sponsor



Media
Sponsors



A Message from our Artistic Director Jane Spence

As the new Artistic Director of Lighthouse Festival, I am thrilled and honoured to take the helm of this beloved institution that has been a part of these vibrant arts communities for years. I know firsthand how vital live theatre is to the fabric of Norfolk County and the Niagara Region. Theatre brings us together, makes us laugh, cry, and reflect, and I can't wait to share this exciting new season with you.

This year, we kick off with *The New Canadian Curling Club* by Mark Crawford, a heartwarming and hilarious story of overcoming adversity, friendship, inclusion, and, of course, curling! Next, we dive into the world of mystery and comedy with *The Hound of the Baskervilles*, a clever and riotous take on the Sherlock Holmes classic.

Hidden Treasures promises to captivate audiences with a combination of two of Norm Foster's funniest one act gems. Next, the world premiere of Jamie Williams' *Pinkerton Comes to Prospect* will have you in stitches with its delightful blend of quirky characters and unexpected twists. Finally, we close the season with Norm Foster's *Here on the Flight Path*. With his signature charm and wit, this play explores how John, a divorced bachelor, and his perspective on life and love are impacted by encounters with three different neighbours on his apartment balcony.

Each of these plays has been chosen for their ability to make us connect with one another, and I can't wait to see the joy they bring to the stage. I'm so excited for this journey and look forward to celebrating the magic of live theatre with you all. See you at the show!



Jane Spence
Artistic Director



LAND ACKNOWLEDGEMENT MESSAGE

Lighthouse Festival acknowledges that Lighthouse is established on land that has been inhabited by Indigenous peoples for millennia. We are grateful to be able to live, work and create on the Treaty Lands and Territory of the Mississaugas of the Credit First Nation as well as the traditional territory of the Haudenosaunee and Anishinaabe peoples. Recognizing the important contributions of Indigenous peoples is consistent with our commitment to making the promise of Truth and Reconciliation real in our communities.

A Message from our Board Chair

Robert Whitenect

Dear Valued Patrons,

Welcome to our 2025 season of Lighthouse Festival Theatre.

On behalf of the entire Board of Directors, I extend a heartfelt welcome to our group of theatres - Lighthouse Port Dover, Lighthouse Port Colborne, and Simcoe Little Theatre. Your presence fills this space with life, transforming it from a building into a vibrant hub of artistic expression. We recognize and deeply appreciate your unwavering support, which is the cornerstone of our continued success.

This season, we have curated a diverse program to ignite your imagination, provoke thought, and offer moments of pure joy and laughter.

We are committed to fostering an inclusive and welcoming environment for all. We will continue our "relaxed" performances so that those who cannot, for a variety of reasons, enjoy a regular performance, can still attend our shows in a manner that suites their own needs.

We could not provide you this excellent form of entertainment if it wasn't for our Artistic team, supported by a strong Administrative team and behind the scenes professionals who support the product you see on stage. We are also blessed with an amazing group of volunteers to round out our presentations. We could not survive without our donors and our sponsors - we truly appreciate your ongoing contributions.

Once again, thank you for being a vital part of our theatre family. We look forward to sharing many memorable afternoons and evenings with you. Please, sit back and enjoy the show.

Sincerely,

Robert Whitenect,
Chair, Lighthouse Festival Theatre

Lighthouse Board of Directors

Chair

Robert Whitenect

Past Chair

J.J. Knott

Vice Chair

Maryan Gemus

Treasurer

Jason McIntyre

Secretary

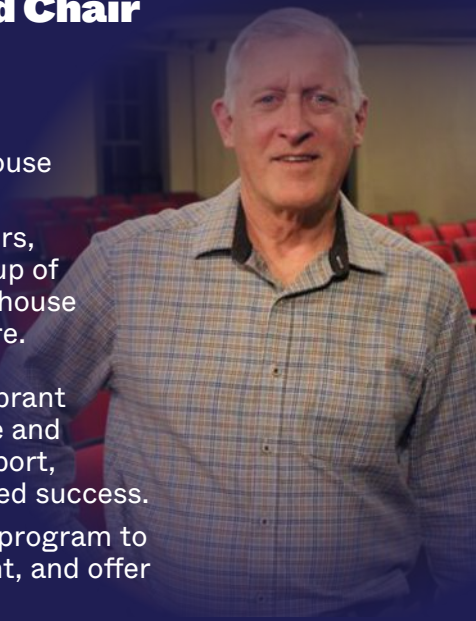
Dori Cartwright

Members at Large

Mary Lou Ambrose Little, Steven Badger, Betteanne Cadman, Marjorie Dawson, Susan Hodgkinson, Michael Sinnaeve, Josh Winter

Port Colborne Advisory

Carole Black Brisley, Cindi Pohonick Talbot



THE LIGHTHOUSE TEAM

LEADERSHIP

Artistic Director

Jane Spence

Executive Director

Nicole Campbell

PATRON SERVICES

Patron Experience Manager

Stephanie Grant

Front of House Manager Port Colborne

Cody Linthicum

Box Office Representatives

Amy Bell, Emma Haywood, Sandra Kelba, Travis Lloyd, Michele Lyons, Michele McLean, Donna Pollard

House Managers

Gerry Hamill, Don Kearney-Bourque, Janet Lala, Jamie Mowat, Donna Pollard, Chrystal Stephens, Edie Williams

Bartenders

Stephanie Grant (Bar Manager), Darby Brennan, Amy Bell, Daniela Hamilton, Don Kearney-Bourque, Rhae-Anne Naphan, Taylor Peekstok, Holly Sahs, Chrystal Stephens

Balcony Monitors

Travis Lloyd, Sue Munroe, Jan Nixon, Linda Packer, Kathie Vysick

Cleaners

Lexi Abell, Katherine Kowalska, Doris Pelletier, Holly Sahs, Daniel Traina

ARTISTIC

Director in Residence

Derek Ritschel

Production Manager

Alice Barnett

Technical Director

Hailey Parker

Assistant Technical Directors

Sabrina Pringle (Port Dover)

Head Technicians

Andy Dominick (Port Dover) and James McCoy (Port Colborne)

ADMINISTRATION

Development Officer

Tasha Blake (Maternity Leave) and Lynda Henriksen (Interim)

Bookkeeper

Valerie Bolton

Technical & Administrative Officer

Paige Hingston

Marketing & Communications Manager

Don Kearney-Bourque

Administrative Assistant

Sean Lévis

Marketing Associate

Aidia Mandryk

Operations Manager

Caitlin O'Neill

Simcoe Little Theatre Coordinator

Anna Reu

Human Resource Coordinator

Bruce Robinson

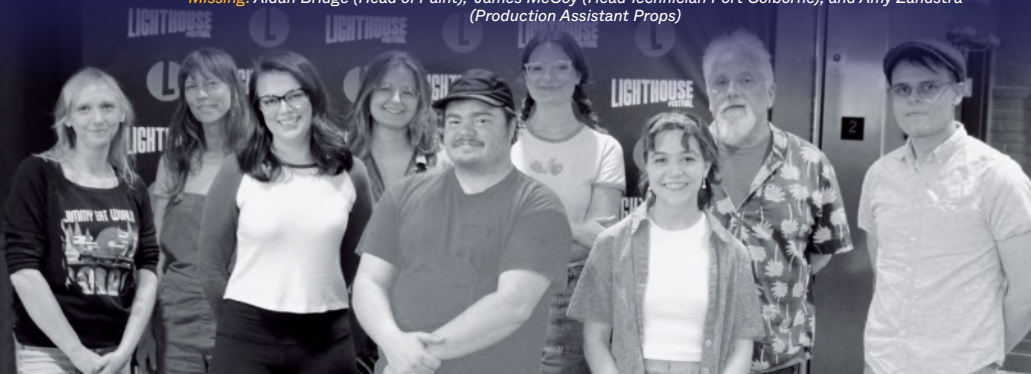
LISTED LEFT TO RIGHT

BACK ROW: Hailey Parker (Technical Director), Sabrina Pringle (Assistant Technical Director Port Dover), Grace Delamere (Head of Wardrobe), Morgaine McEvoy (Props Assistant), Chris Verge (Past Assistant Technical Director Port Colborne), and Andy Dominick (Head Technician Port Dover)

FRONT ROW: Alice Barnett (Production Manager), Curtis Wilson (Assistant Head Technician), and Isabella Harper (Production Assistant [Show Operator])

Missing: Aidan Bridge (Head of Paint), James McCoy (Head Technician Port Colborne), and Amy Zandstra (Production Assistant Props)

**2025
CREW**



A MESSAGE FROM THE PORT COLBORNE MAYOR - BILL STEELE

Welcome to Lighthouse Festival in beautiful Port Colborne!

Along with Council, and all of our residents, I'm pleased to welcome festivalgoers to Roselawn Theatre and the adjoining Roselawn Centre. It is a place that is close to my heart, as it's a cornerstone of our community, and it was at one point my great grandparents' home!

Roselawn Theatre is operated under our City's department of Museum and Culture, where art shows, exhibits and events take place year-round, at the theatre, inside the heritage mansion, and outside on the lawn.

Personal connections aside, the arts are truly alive here in Port Colborne, as volunteers, sponsors, and patrons are involved with the festival throughout the year.

I hope that during your visit to Port Colborne you'll take time to enjoy some of the additional sights, sounds and tastes available here.

We have two shopping districts, along Historic West Street, and Main Street, known as Old Humberstone, each of which have unique stores and food options from around the world.

The city is also home to one of the great lakes' largest marinas, beautiful beaches, tranquil nature trails and the world-famous Welland Canal running right through the centre of town.

With so much to do here, we hope you'll come back to visit for more Lighthouse shows and to enjoy all that Niagara's South Coast has to offer.

For more information, visit Portcolborne.ca



A MESSAGE FROM THE NORFOLK COUNTY MAYOR - AMY MARTIN



On behalf of Norfolk County Council, I'm pleased to welcome you to Lighthouse Festival in beautiful Port Dover.

As a former Young Theatre Player, I had the opportunity to perform here as a child, and I am filled with fond memories each time I walk through the doors. Stepping onto the stage before a packed house — or witnessing great artists in their element from the audience — is an extraordinary experience.

This iconic building is a welcoming space to all — from theatregoers to some of the best in the business, both on stage and behind the scenes.

Lighthouse Festival is a core part of our community's arts, culture, and tourism industry. Live theatre has helped rejuvenate the arts scene locally and provides a yearly boon for our community as a whole. I invite you to enjoy all the great things that Norfolk County offers during your visit.

Jane, Nicole, and the entire Lighthouse team have consistently delivered countless exceptional performances and moments of awe over the years. There is no doubt that this trend will continue in the upcoming 2025 season.

I encourage you to sit back, relax, and enjoy the show!

ROUND OF APPLAUSE FOR OUR SPONSORS & PARTNERS

PRODUCTION PRESENTERS

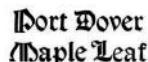


The Viola Salter Group
ScotiaMcLeod, a division of Scotia Capital Inc.
Scotia Wealth Management.

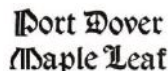
PRODUCTION SUPPORTERS



LIGHTHOUSE CHAMPIONS



MEDIA PARTNERS



HOSPITALITY PARTNERS



GOVERNMENT/ COMMUNITY PARTNERS



Conseil des Arts du Canada

Canada Council for the Arts



ONTARIO ARTS COUNCIL
CONSEIL DES ARTS DE L'ONTARIO
an Ontario government agency
un organisme du gouvernement de l'Ontario



PORT COLBORNE



SIMCOE LIONS CLUB



WRITTEN BY NORM FOSTER
DIRECTED BY DEREK RITSCHER

STARRING

Julia Dyan as Fay, Angel and Gwen
Reid Janisse as John

CREATIVE TEAM

Set Designer Eric Bunnell
Costume Designer Alex Amini
Lighting Designer Alex Sykes
Stage Manager Daniele Guillaume
Assistant Stage Manager Sara Allison

PRODUCTION TEAM

Production Manager Alice Barnett
Technical Director Hailey Parker
Assistant Technical Director Port Dover Sabrina Pringle
Head Technician Port Colborne James McCoy
Head Technician Port Dover Andy Dominick
Head of Paint Aidan Bridge
Head of Wardrobe Grace Delamere
Production Assistant (Show Operator) Isabella Harper
Props Assistant Morgaine McEvoy
Assistant Head Technician Curtis Wilson
Production Assistant (Props) Amy Zandstra

*Here On the Flight Path is staged by arrangement with Pam Winter, Gary Goddard Agency,
www.ggagency.ca*

SPECIAL THANKS

Simcoe Little Theatre, Merek Triano, Abby Malcolm, Laura Maieron, and Zakk Milne

WITH SPECIAL THANKS TO THE DEDICATED TEAM AT THEATRE AQUARIUS:

Micheal Walsh (Director of Production), Jason Chesworth (Interim Technical Director), Jessy Stephens (Head Carpenter), Dave Nardi (Scenic Carpenter), Verne MacPherson (Scenic Carpenter), and Johnny Nuell (Scenic Carpenter)

There will be a 20 minute intermission

Presenting
Sponsors



THE VIOLA-SALTER GROUP
ScotiaMcLeod, a division of Scotia Capital Inc.
Scotia Wealth Management.

Supporting
Sponsor



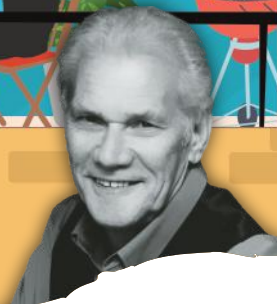
Media
Sponsors





A Message from the Playwright

Norm Foster



I wrote *Here On The Flight Path* with the idea that my wife, Janet Monid, and I could take it on the road somewhere and take our two young children along with us. And we did tour it. We toured it from Ontario down as far as Georgia in the United States. It was a great way to see that part of the world. And the children still talk about it today. My favourite stop along the way was Nashville. It's not that big, but it is jammed packed with country music entertainment everywhere you look..



DONATE TO
LIGHTHOUSE
FESTIVAL

TAKE YOUR LOVE OF THEATRE TO THE NEXT LEVEL

Live theatre is only possible because of the incredible support of people like you—our loyal patrons and generous donors—who believe in the power of the arts to bring communities together, spark imagination, and share unforgettable stories. As a donor, not only do you help keep the magic of theatre alive, you also enjoy some great perks! From free ticket exchanges when life gets busy, advance sales for off season shows, to seeing your name proudly listed on our website and exclusive invitations to mingle with the actors, directors, and designers who bring each show to life—it's our way of saying thank you.

Let's keep the spotlight shining bright in our community—consider making a donation today to help the show go on!

**** Donor Advantages subject to level of gift.**

To donate to Lighthouse Festival

Scan here or
call Lynda Henriksen at
226-290-0075





A Message from the Director

Derek Ritschel

Welcome to *Here on the Flight Path* — a play that, much like its title suggests, is about catching life's little moments as they fly by.

Norm Foster has always had a gift for holding up a mirror to our everyday lives, reflecting back both the humour and the heartache we encounter along the way. This play is no exception. At its centre is John, a man navigating life, love, and loss from the balcony of his apartment, where three very different women enter his world over the course of three years. Each encounter changes him in unexpected ways — sometimes with laughter, sometimes with a lump in the throat.

Directing a Foster play is always a joy because his writing is deceptively subtle. On the surface, the dialogue flows like easy conversation between old friends, but beneath that is a profound understanding of human connection. The challenge — and the privilege — for any director is to make sure we honour that emotional truth while letting the comedy land naturally.

What I love about *Here on the Flight Path* is that it reminds us how every person we meet leaves a mark, no matter how brief their appearance in our lives. It's about embracing those fleeting connections, learning from them, and perhaps even being brave enough to change because of them.

I'm so grateful to our incredible cast and creative team for bringing these characters to life with such warmth and honesty. And I'm equally thankful to you, our audience, for sharing your evening with us. May you leave the theatre tonight with a smile on your face, a warmth in your heart, and maybe a little more appreciation for the strangers-turned-friends who cross your path.

Enjoy the show.

Derek Ritschel

CREDITS

ACTOR: A GIFT TO LAST, STRAWBERRIES IN JANUARY, CRACKWALKER, WAITING FOR GODOT, DANCING WITH THE FOOL, HEATWAVE, THE DRAWER BOY, MARY'S WEDDING, BEDTIME STORIES, MENDING FENCES, A CHRISTMAS CAROL, STRANGER IN OUR HOUSE, BETWEEN FRIENDS, OUTLAW, THE FOURSOME, A PACK OF THIEVES, LAKEFRONT

PLAYWRIGHT: PERFECT PITCH, RUM RUNNERS THE MUSICAL!, FAIR AND SQUARE

DIRECTOR: LUNENBURG, SEXY LAUNDRY, EDUCATING RITA, STAGE FRIGHT (world premiere), WHEN THE REAPER CALLS, KNICKERS, MELVILLE BOYS, HARVEST, RUM RUNNERS THE MUSICAL! (world premiere), SELF HELP TRYING, CORPSE!, THE GHOST ISLAND LIGHT (world premiere), PERFECT WEDDING, JONAS AND BARRY IN THE HOME (world premiere), BASKERVILLE; A SHERLOCK HOLMES MYSTERY, FIVE ALARM, RUMORS, ODD COUPLE, NURSE JANE GOES TO HAWAII, THE DROWSY CHAPERONE, A FUNNY THING HAPPENED ON THE WAY TO THE FORUM, YOUNG FRANKENSTEIN, MARY POPPINS, BEYOND THE SEA (world premiere), SUGAR ROAD, TIP OF THE ICEBERG (world premiere), CLUE! THE MUSICAL, THE PRODUCERS, MARY'S WEDDING, A GENTLEMEN'S GUIDE TO LOVE AND MURDER, THE REAL SHERLOCK HOLMES (world premiere)

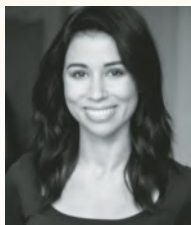
UPCOMING DIRECTING PROJECTS: JONAS AND BARRY at Theatre Orangeville



SET DESIGNED BY:
ERIC BUNNELL



STARRING



JULIA DYAN AS FAY, ANGEL AND GWEN

FOR LIGHHOUSE: Debut

ELSEWHERE: JENNY'S HOUSE OF JOY, WRONG FOR EACH OTHER (The Foster Festival), THE BIRDS AND THE BEES (Sudbury Theatre Centre), CREES IN THE CARIBBEAN (Magnus Theatre), THE BOYS (Amazon Prime), THE UMBRELLA ACADEMY (Netflix), WHAT WE DO IN THE SHADOWS (FX).

NOTE: Thank you to Jacob and my family for always supporting me with encouragement and pride. Follow me @julia_dyan.



REID JANISSE AS JOHN

FOR LIGHHOUSE: Debut

ELSEWHERE: BIGFOOT! (Port Stanley Festival Theatre), HALFWAY THERE (Orillia Opera House), THEY'RE FOUND IN TREES (Theatre Orangeville), MURDOCH MYSTERIES (CBC), THE BOYS (Amazon), ORPHAN BLACK (Shaftesbury), MULTIPLE REVUES (The Second City).

NOTE: Big thanks and lots of love to Mary and Richard, Lynise, Everett, Lucy and all the Janeedys.

FUEL UP FOR THE FUNNY

PORT DOVER

Lighthouse is proud to partner with local Port Dover restaurants to offer our **Dinner Add-ons**. Enjoy a mouthwatering three-course meal before your performance and **let us make the reservation for you**. Visit our website to see the menus from each of our partnering restaurants along with details and how to book your Dinner Add-on today!



Dinner Add-on must be purchased in advanced. The 10% discount does not apply to the Eric Beach Restaurant.

PORT COLBORNE

Lighthouse is thrilled to be working with some great local Port Colborne restaurants! Visit one of our Port Colborne Restaurant partners the same day as your performance and **receive 10% off your bill** just by showing your theatre ticket. Good food and good laughs, it's the perfect pairing!



Dinner Add-ons are not available at Canalside Restaurant and The Smokin' Buddha.

Brad Rudyin Sugar Road |
Lighthouse Festival 2022 |
Director: Derek Ritschel,
Set Designer: Bill Chesney,
Lighting Designer: Chris
Malkowski, Costume
Designer: Claudine Parker,
Stage Manager: Meghan
Speakman, Assistant Stage
Manager: Sara Allison



CREATIVE TEAM



ERIC BUNNELL — SET DESIGNER

FOR LIGHHOUSE: Set designs for LAKEFRONT - World Premiere, HURRY HARD - World Premiere, STAGE FRIGHT - World Premiere.

ELSEWHERE: Set designs for BIGFOOT - World Premiere (Port Stanley Festival Theatre), THE BEAVER CLUB - World Premiere (Port Stanley Festival Theatre), Set and costume designs for PRAIRIE NURSE - World premiere (Blyth Festival Theatre), JUMBO - World Premiere (Blyth Festival).

NOTE: Eric is a #stthomasproud resident of St. Thomas, Ontario.



ALEX SYKES — LIGHTING DESIGNER

FOR LIGHHOUSE: Head of Lighting 2022 & 2023 season

ELSEWHERE: THOSE MOVIES, WHIT'S END, MELVILLE BOYS, ON A FIRST NAME BASIS, SCREWBALL COMEDY (Foster Festival), MAJOR BARBARA, MURDER-ON-THE-LAKE (Assistant Lighting Designer, Shaw Festival)

NOTE: Thanks to my family and friends who uplift me and my art, always.



ALEX AMINI — COSTUME DESIGNER

FOR LIGHHOUSE: THE REAL SHERLOCK HOLMES, OLD LOVE, MEET MY SISTER, BED & BREAKFAST, WHERE YOU ARE, JACK AND THE BEANSTALK, CINDERELLA, COME DOWN FROM UP RIVER, ON THE AIR, A PACK OF THIEVES

ELSEWHERE: CAROLINE OR CHANGE, THE WILD PARTY (Dora Nominee), GREY GARDENS (Dora Nominee), ONEGIN, and NEXT TO NORMAL, (Dora Nominee); Musical Stage Co., THE JAZZ SINGER and BRIGHTON BEACH MEMOIRS; The Harold Green Jewish Theatre, MARY POPPINS, MAMMA MIA and BEAUTY AND THE BEAST; Port Hope Capitol Theatre

NOTE: As always, thanks to Carmen for saving my life. Gamma Llama



DANIELE GUILLAUME — STAGE MANAGER

FOR LIGHHOUSE: LAKEFRONT, MURDER AT ACKERTON MANOR, PACK OF THIEVES and many more

ELSEWHERE: DREAMGIRLS, DOUBT, HALF-LIFE (Theatre Aquarius) AIN'T MISBEHAVIN', STONES IN HIS POCKETS (Grand Theatre, London) MYSTERE (Cirque du Soleil, Las Vegas) THE LONG WEEKEND, SCREWBALL COMEDY (Atlantis Theatre, Paradise Island, Bahamas)

NOTE: "I like the ephemeral thing about theatre, every performance is like a ghost – it's there and then it's gone." – Maggie Smith



SARA ALLISON — ASSISTANT STAGE MANAGER

FOR LIGHHOUSE: Assistant Stage Manager for MURDER AT ACKERTON MANOR, THE REAL SHERLOCK HOLMES, and 10 other Lighthouse Festival productions since 2018!

ELSEWHERE: HARE & TORTOISE (+12 other productions at Carousel Players!), STARWALKER (Urban Ink Productions), THIS IS HOW WE GOT HERE (Native Earth/Shaw Festival), BECOMING DR. RUTH (HGJTC), "MASTER HAROLD" ... AND THE BOYS (Obsidian Theatre Company)

NOTE: Thank you to my family, friends, colleagues and strangers who continue to support live theatre!

THANK YOU TO OUR VOLUNTEERS!

Claudia Ainsworth	Nicole Ebert	Randall Lallouet	Cathy Olm
Bruce Armstrong	Sonya Eby	Deborah Lamb-Green	Larry Olm
Maria Barnard	Eva Eriksson	Audrey Langendoen	Cassandra Orlowski
Margaret Barron	Sheila Evans	Barbara Legun	Ellen Ottenbreit
Cheryl Beemer	Judy Eyndhoven	John Linklater	Lynda Otterman
Gloria Beres	Carole Ferriday	Linda Linklater	Fay Owen
Joyce Berry	Patrick Ferriday	Sherry Lloyd	Linda Packer
Aishwanya Bhratta	Doug Ford	Tom Mack	Michelle Proracki
Donna Birrell-Westlake	Helen Ford	Sherry Mackay	Tony Proracki
Pat Black	Cathy Forma	Bonnie Major	Douglas Quirk
Alona Black-Havens	Beth (Elizabeth)	Diane Martineau	Anna Reu
Cara Blackwood	Fulbrook	Denis Martineau	Nancy Ross
Marilynn Bobyk	Lynne Gale	Courtney Mason	Eva Schertizing
Judy Boone	Darla Germain	Brigitte Mayhew	Betty Schild
Michele Bourgeois-Doyle	Karen Gillespie	Edward Mazurewicz	Bonnie (Yvonne) Schneider
Jan Brady	Irene Glavac Petric	Inese Mazurewicz	Bruce Schneider
Steve Brightman	Donna Grabell	Julie McCague	Darla Schonewille
Helen Brown	Lorne Green	Mollie McDuffe	Angela Shaw
Liseann Brugman	Chris Greene	Lisa McIntyre	Carol Ann Shaw
Jane Buick	Kim Hamill	Jack McKeen	Jack Sheehan
Connie Butler	Roy Havens	Lenore McKeen	Rebecca Sheehan
Darlene Caira	Gayle Heroux	Ramona McKendrick	Nancy Sherwin
Shari Cann	Jenny Hilton	Michele McLean	Kathy Siamro
Dori Cartwright	Lorraine Hoyle	Donna McQuiggin	Sandi Simpson
Mary Challen	Clara Hudak	Sharon McQuiggin	Jean Sinkowski
Ralph Champion	Melissa Inanc	Anita Meinen	Maria Skale Glavac
Mary Chiasson	John Ingrao	Irene Mifsud	Lynn Smallacombe
Maxine Cloutier	Manon Innes	James Miller	Paula Smith
Laurie Cocking	Brian James	Angela Milne	Iris Smith
Debbie Cole	Beth (Elizabeth) Jeffery	Gloria Mitchell	Jennifer Spears
Jack Coles	Nancy Jonas	Gail Moir	Marlene Stoner
Susan Cornish	Patti Kelly	Linda Morgan	Frank Strauss
Haley Courtney	Rodger Kelly	Mary Morrison	Sandra Strauss
Drenise Cowlard	Ramona Kendrick	Bernie Mummery	Al Thombs
John Cowlard	Sheri Kerby	Susan Munro	Janette Toscher
Frances Crossley	Katie Kiehl	Colleen Murphy	Louise Tosques-DiLalla
Laura Culp	Kathy Kirk	Cindy Murphy	Gillian Trevivian
Linda Dalrymple	Terry Wayne Kirk	Jan Nixon	Tanya Turner
Kathi Davy	Carol Kitchen	Shirley Nolet	Kathie Vysick
Carol DeFields	Jayne Knott	Patty Noonan	Carol Welsby
Beth Demizio	JJ Knott	Carolyn Nordheimer	Marilyn Williams
Sharon Dobbie	Colin Krueger	Cathy Novinka	Edie Williams
Shelley Dressel	Margaret Krueger	Dan O'Brien	Gislaine Willitts
Paula Duntun	Dolores (Laurie) Krupa	Charlotte O'Brien	Denise Wilson
Clifford Duntun	Kathy Kupi	Elaine Ogilvie	Libby Wilson
Diane Durette	Bill Lacroix	Frank Olinski	Lyn Workman
	Fran Lacroix	Marsha Olinski	

VOLUNTEERS ARE VITAL TO THE LIGHTHOUSE FESTIVAL EXPERIENCE.

Help us stage live comedy all summer long with welcoming patrons at the doors, scanning tickets, handing out programs, ushering theatre goers to their seats or selling 50/50 tickets.



THANK YOU TO OUR REMARKABLE GROUP OF DONORS

The people listed below and the many who donate anonymously help thousands of us experience the joy of theatre, bringing smiles and laughter to our beautiful port towns. As a donor, you support the presentation of unforgettable performances, cultivate new talent, and connect through the magic of theatre and community. The generous individuals below include those who donated \$500+ and we are proud to recognize them. For a full listing of our 2025 donors of \$50+ please visit our website. To all our LFT donors we give a most heartfelt thank you, your generosity is greatly appreciated

BENEFACTOR

Wendy Boardman
Michael & Lorie Sinnaeve

CHAMPION

Paul & Rhonda Babcock
Jim & Marjorie Dawson
Cheryl Elliott
Wayne & Mandy Mawhiney
Reise Family Foundation
Erwin Taylor Charitable Foundation
Scott and In memory of Scottie

LEADER

Catherine Buck
Peter John Cooling
John & Karen D'Alessio
Sheri Kerby
Kathy & Ron Kiehl
R Susan MacIntyre
Viola and Donald Malpass
James & Valerie Milostan
Susan O'Neil
Rotary Club of Norfolk Sunrise
Bill & Kathy Sanford
Dennis & Deborah Souder
Karen Lynn Stovell

COLLABORATOR

Nicole Campbell
Robert & Gail Chapman
William & Susan Dell
Don Ferguson
Helma Geyer
Janice Jenter
Donna Johnston
Jackie Kleniewski
Jayne & JJ Knott
Derek & Edna Laming
Lisa & Tom Leitch
Judy Moore & the late Delos Moore
Gary Paret & Trish Paret
Nicole Potac
Irma Purchase
Reich-Rohrwig Family
Doug Reilly
Lyn Royce
Hugh M. Russell
Joan Shirlow
George & Cindi Talbot
Helen Wagenaar & Keith Jones
Anonymous (3)

**as of August 14, 2025*

FOR A FULL LIST OF OUR DONORS, PLEASE SEE OUR WEBSITE



THOUSANDS & THOUSANDS
WAITING TO BE WON

LIGHTHOUSE THEATRE
50/50
RAFFLE

VISIT WWW.LIGHTHOUSE THEATRE.COM/LIGHTHOUSE-5050 TO PLAY!

20
SEASON
26

PORT DOVER

PORT COLBORNE

MAY 27 — SEPTEMBER 26

JUNE 17 — OCTOBER 4

The Beaver Club

Written by Barb Scheffler

Four friends pile into a well-worn car and set off on the ultimate cross-country road trip: from Toronto all the way to Dildo, Newfoundland. What starts as a spontaneous getaway soon spirals into a journey full of chaos, confessions, and questionable roadside snacks.

The women relive old memories, create outrageous new ones, and take on everything from skinny dipping in questionable lakes to navigating tourist traps with names they definitely can't say on the radio. Secrets are spilled, boundaries are tested, and laughter erupts at every turn.

The Beaver Club is a raucous, and surprisingly touching celebration of womanhood, aging disgracefully, and friendships that can survive anything.

Crees In The Caribbean

Written by Drew Hayden Taylor

Crees in the Caribbean by Drew Hayden Taylor is a delightfully witty yet deeply touching play about Evie and Cecil Poundmaker, a Cree couple celebrating their 35th anniversary with their first trip abroad—a Mexican resort vacation gifted by their children.

The comedy sparkles as this fish-out-of-water couple navigates resort life with laugh-out-loud exchanges rooted in decades of shared history. Curmudgeonly Cecil and spirited Evie fill the stage with humorous banter, but the play unfolds as a truly heartfelt journey as memories resurface, and Evie gently pushes Cecil to seize each moment. In addition, their new friendship with Manuela, their young housekeeper, is profoundly moving.

This play is a beautiful, poignant story celebrating human connection across cultures; the comic joy of love rekindled and self-discovery in later life against an idyllic backdrop.

Secret Service

Written by Ephraim Ellis

Welcome to Il Glorioso Buco, Toronto's swankiest Italian restaurant. The atmosphere is thick with... espionage? A crack team of international spies has taken over the kitchen, using marinara as camouflage for a top-secret sting operation.

Enter Harry Marsden: an eternal optimist, who thinks he's just starting a regular old waiter gig. Armed only with a serving tray and way too much enthusiasm, Harry has no idea he's just walked into the culinary equivalent of a James Bond blooper reel.

Ephraim Ellis's world premiere Secret Service is a riotous rollercoaster of laughter and subterfuge. It's Mission: Impossible meets MasterChef in a farcical feast



Liars At A Funeral

Written by Sophia Fabiilli

Family reunions are hard enough without faking a funeral, but that's exactly what Grandma Mavis has cooked up. When a blizzard traps a wildly dysfunctional family inside a drafty funeral parlour, the sparks fly faster than the power lines go down.

Over one increasingly unhinged day, skeletons are flung from closets, and secrets are spilled like cheap wine. Five actors play nine roles in a whirlwind of crazy characters, and one enthusiastic funeral director.

Liars at a Funeral is a gloriously over-the-top tribute to family, forgiveness, and the fine art of pretending everything's fine. It's the perfect send-off for anyone who thinks their family is a little bit nuts - until they see this one.

A Woman's Love List

Written by Norm Foster

Megan and Carly write down a list of qualities for the perfect man, and to their surprise, he appears! But perfection proves to be a moving target. As they begin tweaking the list - Blaze Wilson, their masterpiece, responds in kind, morphing from one personality to the next faster than you can say "emotional whiplash. Things get even messier when Blaze discovers the list and takes matters into his own hands.

Full of rapid-fire dialogue, bizarre romantic detours, and enough twists to qualify as cardio, A Woman's Love List is a hilarious exploration of modern relationships and why love can't be measured by bullet points.

Get Down Tonight (The Ultimate 70's Soundtrack)



A Leisa Way Production

Lighthouse Festival's 2026 Season Topper is a high-energy celebration of the unforgettable music of the 70's! From the glittering dance floors of disco to the coffee houses of folk, to the classic anthems of rock, this electrifying concert features hits from The Eagles, Led Zepelin, Fleetwood Mac, James Taylor, ABBA, Carole King, Elton John, The Bee Gees, Stevie Wonder, Marvin Gaye, Carly Simon and many, many more. Leisa Way and her sensational Wayward Wind band return to Lighthouse to deliver powerhouse vocals and non-stop nostalgia in this feel-good celebration of the decade that defined a generation. Whether you're a dancing queen or a rock-and-roll rebel, get ready to sing your heart out, boogie, and Get Down Tonight - because this show is pure 70's magic from start to finish!

SUBSCRIPTION RENEWALS STARTING AUGUST 25!
TAKE ADVANTAGE OF OUR EARLY BIRD PRICING EVENT!

PRE-ORDER YOUR DRINKS

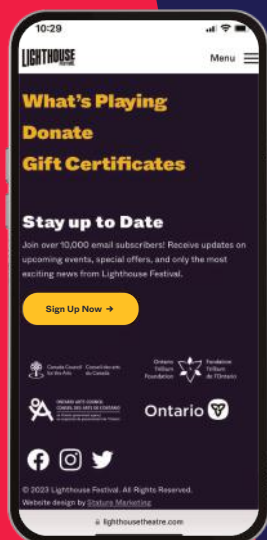
Fill out a pre-order form and pay at the bar before taking your seats and our bar staff will have your beverages ready for you so you can make the most of your intermission!



WHAT'S THE RUSH?

Did you know you can bring your drinks into the theatre with you?

Sponsored by
PILLITTERI
ESTATES
Winery



DON'T MISS A THING!

Follow us on social media or sign up to our newsletter to learn more about all the upcoming events.

VISIT LIGHTHOUSEFESTIVALTHEATRE.COM TO SIGN UP

 @lighthousefestivaltheatre

 @lighthouseft

 @lighthouseLFT

 @lighthouseft

 @lighthousefestivaltheatre8047



2025
SEASON TOPPER

Memories of the
Rat Pack

A Christopher McHarge Production

Frank Sinatra, Dean Martin and Sammy Davis Jr. come to life in this nostalgic concert. Relive the days of the Rat Pack with Las Vegas' most famous entertainers and their live big band orchestra just as they appeared live in the Sands Hotel Copa Room back in the early 1960's! With a stellar cast of some of the finest performers in the business, The Rat Pack Show has been hailed as the next best thing to seeing the original Rat Pack themselves. Nothing but class and cool...with the occasional roast and very frequent toasts to each other! This show has played to critical and audience acclaim for over twenty years, across Canada, the US, and Europe.

PORT DOVER SEPTEMBER 16 - 27

PORT COLBORNE OCTOBER 1 - 5

GET YOUR TICKETS NOW

WWW.LIGHTHOUSE THEATRE.COM