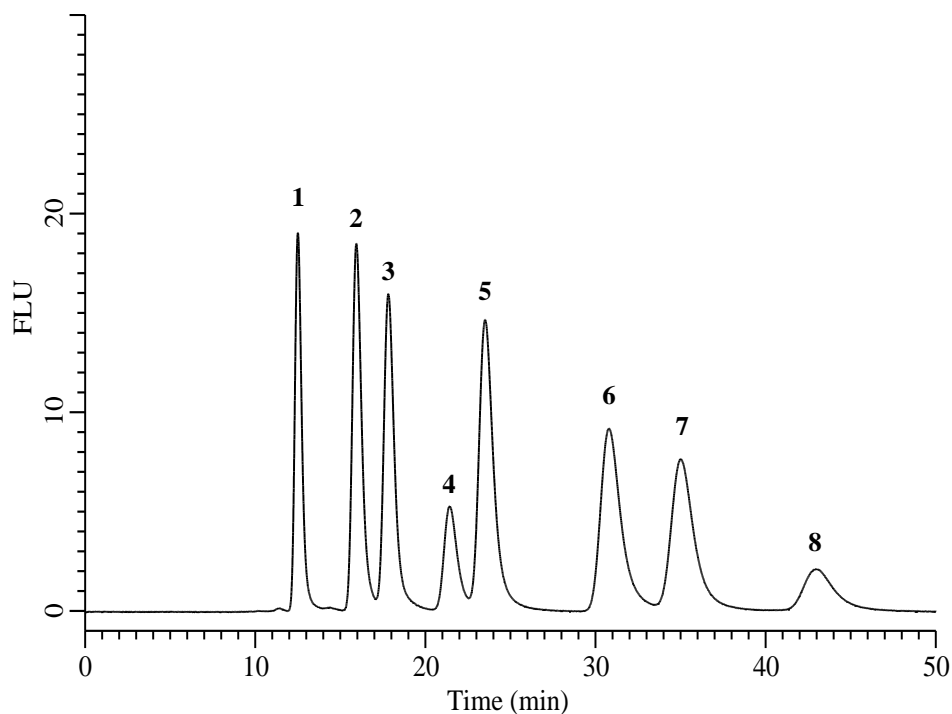


InertSearch for LC

Inertsil Applications

Analysis of Tocopherols and Tocotrienols

Data No. LB811- 1054



Conditions

Column : InertSustain C30 (GL Sciences Inc.)
(5 μ m, 250 x 4.6 mm I.D.)

Column Cat. No. : 5020-17145

Eluent : A) CH₃OH
B) H₂O
A/B = 95/5, v/v

Flow Rate : 1.0 mL/min

Col. Temp. : 2 °C

Detection : FL Em 297 nm Ex 325 nm

Injection Vol. : 1 μ L

Sample : Standard in C₂H₅OH

Analyte:

1. δ -Tocotrienol
 2. γ -Tocotrienol
 3. β -Tocotrienol
 4. α -Tocotrienol
 5. δ -Tocopherol
 6. γ -Tocopherol
 7. β -Tocopherol
 8. α -Tocopherol
- (each 100 mg/L)