

PRODUCT CATALOGUE 2026



BRCS

Food Safety

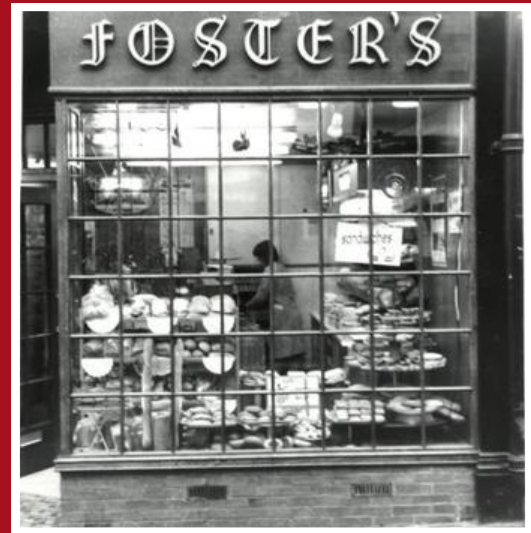
CERTIFICATED

FOSTERS
BAKERY

WELCOME TO FOSTERS

WE ARE THE BREAD PEOPLE

Based in Barnsley South Yorkshire, Fosters bakery began its humble journey back in 1952 - When Emily Foster started it all in Mapplewell village. Since then Foster's have been baking up all things quality, freshness and taste.



With presence nationally and worldwide, Foster's has become the favourite bakery for some of the UK's top restaurants, bars, caterers, food service professionals and more...

We are committed to delivering you the best baked goods to the highest of standards!

With family at our core, Foster's really is the peoples bakery - "We are the bread people"

From everyday bloomers and traditional breads, Brioche and fruit products, speciality bakes and original flavours - we really have it all!



OUR NPD TEAM

CANT FIND WHAT YOU'RE LOOKING FOR?

FOR SOMETHING BESPOKE, ORIGINAL OR A CUSTOM REQUEST. OUR IN HOUSE NPD TEAM ARE HERE TO HELP DELIVER!

WITH NEW PRODUCTS BEING SAMPLED AND DEVELOPED EVERYDAY OUR TEST KITCHEN IS UP TO DATE WITH THE LATEST FLAVOURS, SHAPES AND TRENDS



OUR SALES TEAM

FOR ENQUIRIES, ORDERS OR FURTHER INFORMATION, PLEASE CONTACT OUR DEDICATED SALES TEAM

SARA BEAUMONT



SARA@FOSTERSBAKERY.CO.UK



07855 346137

TONI FAREY-HIRST



TONI@FOSTERSBAKERY.CO.UK



07974 442864

**BOTH CAN BE CONTACTED ON:
SALESFORCE@FOSTERSBAKERY.CO.UK**

01 BLOOMERS

**02 SANDWICH
BREAD**

**03 BUNS &
ROLLS**

**04 HOTDOGS &
SUBROLLS**

**05 BRIOCHE
PRODUCTS**

06 FOCACCIA

**07 CONTAINING
SOURDOUGH**





**PURE
SOURDOUGH 08**

**TRADITIONAL
BREADS 09**

CIABATTA 10

**BREAKFAST
MUFFINS 11**

**FRUIT
PRODUCTS 12**

**CONFECTI-
ONARY 13**

**SPECIALITY
BREAD 14**



BLOOMERS

01



WHITE BLOOMER

A CLASSIC WHITE BLOOMER LOAF WITH A LIGHT, FLUFFY CRUMB AND CRISP GOLDEN CRUST. MILD IN FLAVOUR AND BEAUTIFULLY SOFT, IDEAL FOR EVERYDAY SANDWICHES OR TOAST.

7585 - DOORSTEP WHITE BLOOMER

Slice: (13+2) Units per case: x11
Slice thickness: 17mm +/- 2mm
Slice weight: 54g

6596 - DOORSTEP WHITE BLOOMER

Slice: (13+2) Units per case: x5
Slice thickness: 17mm +/- 2mm
Slice weight: 54g

6589 - EXTRA THICK WHITE BLOOMER

Slice: (14+2) Units per case: x5
Slice thickness: 16mm +/- 2mm
Slice weight: 51g

6598 - EXTRA THICK WHITE BLOOMER

Slice: (14+2) Units per case: x8
Slice thickness: 16mm +/- 2mm
Slice weight: 51g

6016 - SXL WHITE BLOOMER

Slice: (16+2) Units per case: x11
Slice thickness: 14mm +/- 2mm
Slice weight: 45g

6070 - SXL WHITE BLOOMER

Slice: (16+2) Units per case: x11
Slice thickness: 14mm +/- 2mm
Slice weight: 45g

6615 - SXL WHITE BLOOMER

Slice: (16+2) Units per case: x11
Slice thickness: 14mm +/- 2mm
Slice weight: 45g



6590 - THICK WHITE BLOOMER

Slice: (18+2) Units per case: x5
Slice thickness: 12.5mm +/- 2mm
Slice weight: 40g

6595 - THICK WHITE BLOOMER

Slice: (18+2) Units per case: x8
Slice thickness: 12.5mm +/- 2mm
Slice weight: 40g

6509 - UNSLICED WHITE BLOOMER

Slice: (Unsliced) Units per case: x5

6302 - UNSLICED WHITE BLOOMER

Slice: (Unsliced) Units per case: x8



A RUSTIC MALTED BLOOMER LOAF WITH A GOLDEN CRUST AND SOFT, AIRY CRUMB. SUBTLY SWEET WITH A RICH, MALTY DEPTH, PERFECT FOR SANDWICHES OR SIMPLY SERVED WITH BUTTER.

MALTED BLOOMER

6697 - EXTRA THICK MALTED BLOOMER

Slice: (14+2) Units per case: x11
Slice thickness: 16mm +/- 2mm
Slice weight: 51g

7343 - EXTRA THICK MALTED BLOOMER

Slice: (14+2) Units per case: x8
Slice thickness: 16mm +/- 2mm
Slice weight: 51g

7351 - EXTRA THICK MALTED BLOOMER

Slice: (14+2) Units per case: x5
Slice thickness: 16mm +/- 2mm
Slice weight: 51g

6513 - UNSLICED MALTED BLOOMER

Slice: (unsliced) Units per case: x5

7316 - SXL MALTED BLOOMER

Slice: (16+2) Units per case: x8
Slice thickness: 12.5mm +/- 2mm
Slice weight: 45g

6071 - SXL MALTED BLOOMER

Slice: (16+2) Units per case: x5
Slice thickness: 12.5mm +/- 2mm
Slice weight: 45g

7310 - THICK MALTED BLOOMER

Slice: (18+2) Units per case: x8
Slice thickness: 12.5mm +/- 2mm
Slice weight: 40g

7334 - THICK MALTED BLOOMER

Slice: (18+2) Units per case: x5
Slice thickness: 12.5mm +/- 2mm
Slice weight: 40g



WHOLEMEAL BLOOMER

A HEARTY WHOLEMEAL BLOOMER WITH A NUTTY FLAVOUR AND WHOLESOME, SOFT CRUMB. FINISHED WITH A GOLDEN CRUST, IT'S PERFECT FOR SANDWICHES, TOAST, OR A RUSTIC ACCOMPANIMENT TO ANY MEAL.

7586 - DOORSTEP WHOLEMEAL BLOOMER

Slice: (13+2) Units per case: x11
Slice thickness: 17mm +/- 2mm
Slice weight: 54g

6591 - DOORSTEP WHOLEMEAL BLOOMER

Slice: (13+2) Units per case: x11
Slice thickness: 17mm +/- 2mm
Slice weight: 54g

7352 - EXTRA THICK WHOLEMEAL BLOOMER

Slice: (14+2) Units per case: x5
Slice thickness: 16mm +/- 2mm
Slice weight: 51g

7354 - EXTRA THICK WHOLEMEAL BLOOMER

Slice: (14+2) Units per case: x8
Slice thickness: 16mm +/- 2mm
Slice weight: 51g

6062 - SXL WHOLEMEAL BLOOMER

Slice: (16+2) Units per case: x11
Slice thickness: 14mm +/- 2mm
Slice weight: 45g

7573 - SXL WHOLEMEAL BLOOMER

Slice: (16+2) Units per case: x8
Slice thickness: 14mm +/- 2mm
Slice weight: 45g

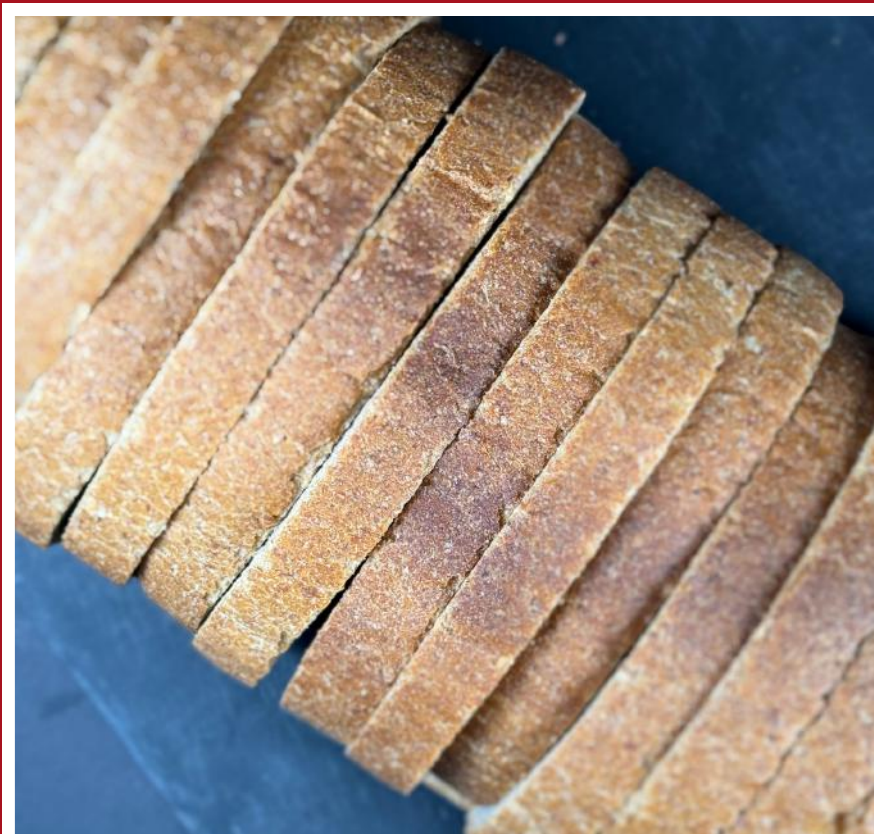


7572 - THICK WHOLEMEAL BLOOMER

Slice: (18+2) Units per case: x5
Slice thickness: 12.5mm +/- 2mm
Slice weight: 40g

6304 - UNSLICED WHOLEMEAL BLOOMER

Slice: (Unsliced) Units per case: x8



A WHOLESOME MULTIGRAIN BLOOMER PACKED WITH A BLEND OF SEEDS AND GRAINS FOR A RICH, NUTTY FLAVOUR. SOFT ON THE INSIDE WITH A GOLDEN CRUST, PERFECT FOR HEARTY SANDWICHES OR TOAST.

MULTIGRAIN BLOOMER

6610 - SXL MULTIGRAIN BLOOMER

Slice: (16+2) Units per case: x8
Slice thickness: 14mm +/- 2mm
Slice weight: 45g

7604 - THICK MULTIGRAIN BLOOMER

Slice: (18+2) Units per case: x5
Slice thickness: 12.5mm +/- 2mm
Slice weight: 40g



MULTISEED BLOOMER

A FLAVOURFUL MULTISEED BLOOMER STUDED WITH A MIX OF SEEDS FOR ADDED CRUNCH AND A RICH, NUTTY TASTE.



6039 - EXTRA THICK MULTIGRAIN BLOOMER

Slice: (14+2) Units per case: x11
Slice thickness: 16mm +/- 2mm
Slice weight: 51g Topping: Grain & Seed



A HEARTY MULTIGRAIN AND SEED BLOOMER PACKED WITH A BLEND OF GRAINS AND SEEDS FOR A RICH, NUTTY FLAVOUR AND SATISFYING TEXTURE.

MULTIGRAIN AND SEED BLOOMER

6017 - SXL MULTIGRAIN & SEED BLOOMER

Slice: (16+2) Units per case: x11
Slice thickness: 14mm +/- 2mm
Slice weight: 45g Topping: Grain & Seed



PALM FREE BLOOMERS

THE BLOOMER YOU KNOW AND LOVE MADE WITHOUT THE PALM OIL. STILL LIGHT AND AIRY IN THE CLASSIC D LOAF SHAPE.

6024 - PALM FREE MALTED OPEN TOP BLOOMER

Slice: (13+2) Units per case: x11
Slice thickness: 17mm +/- 2mm
Slice weight: 54g Topping: Seed & Grain

6023 - PALM FREE WHITE OPEN TOP BLOOMER

Slice: (13+2) Units per case: x11
Slice thickness: 17mm +/- 2mm
Slice weight: 54g (Floured)

6599 - PALM FREE WHITE BLOOMER

Slice: (18+2) Units per case: x11
Slice thickness: 12.5mm +/- 2mm
Slice weight: 40g



SANDWICH LOAVES



02

MALTED SANDWICH BREAD

A SOFT, WHOLESOME SANDWICH LOAF MADE WITH MALTED FLOUR FOR A RICH, SLIGHTLY SWEET FLAVOR AND A LIGHT, AIRY TEXTURE.

6048 - DOORSTEP MALTED SANDWICH BREAD

Slice: (13+2) Units per case: x5

Slice thickness: 17mm +/- 2mm

Slice weight: 54g

7315 - EXTRA THICK MALTED SANDWICH BREAD

Slice: (14+2) Units per case: x8

Slice thickness: 16mm +/- 2mm

Slice weight: 51g

7567 - SXL MALTED SANDWICH BREAD

Slice: (16+2) Units per case: x8

Slice thickness: 14mm +/- 2mm

Slice weight: 45g

7342 - THICK MALTED SANDWICH BREAD

Slice: (18+2) Units per case: x5

Slice thickness: 12.5mm +/- 2mm

Slice weight: 40g



A CLASSIC WHITE SANDWICH LOAF WITH A SOFT, FLUFFY TEXTURE AND MILD, DELICATE FLAVOR. PERFECTLY SLICED FOR CONVENIENCE

WHITE SANDWICH BREAD



6036 - DOORSTEP WHITE SANDWICH BREAD

Units per case: x12 Slice: (13+2)

Slice thickness: 17mm +/- 2mm

Slice weight: 54g

6702 - DOORSTEP WHITE SANDWICH BREAD

Units per case: x5 Slice: (13+2)

Slice thickness: 17mm +/- 2mm

Slice weight: 54g

6056 - SXL WHITE SANDWICH BREAD

Units per case: x12 Slice: (16+2)

Slice thickness: 14mm +/- 2mm

Slice weight: 45g

6538 - SXL WHITE SANDWICH BREAD

Slice: (16+2) Units per case: x8

Slice thickness: 14mm +/- 2mm

Slice weight: 45g

WHOLEMEAL SANDWICH BREAD

A HEARTY WHOLEMEAL SANDWICH LOAF MADE WITH WHOLE GRAIN FLOUR FOR A RICH, NUTTY FLAVOUR AND SATISFYING TEXTURE. SOFT YET WHOLESOME, IT'S PERFECT FOR EVERYDAY SANDWICHES, TOAST, OR A NUTRITIOUS SNACK.

6040 - SXL WHOLEMEAL SANDWICH BREAD

Slice: (16+2) Units per case: x12

Slice thickness: 14mm +/- 2mm

Slice weight: 45g

6759 - SXL WHOLEMEAL SANDWICH BREAD

Slice: (16+2) Units per case: x8

Slice thickness: 14mm +/- 2mm

Slice weight: 45g

6752 - THICK WHOLEMEAL SANDWICH BREAD

Slice: (18+2) Units per case: x8

Slice thickness: 12.5mm +/- 2mm

Slice weight: 40g



A DELICIOUSLY TEXTURED SANDWICH LOAF MADE FROM A BLEND OF GRAINS AND SEEDS, OFFERING A SUBTLE CRUNCH AND NATURALLY RICH FLAVOUR. BALANCED AND SATISFYING, IT'S A GREAT CHOICE FOR ELEVATING SANDWICHES OR ENJOYING TOASTED WITH YOUR FAVORITE TOPPINGS.

MULTIGRAIN SANDWICH BREAD

6037 - DOORSTEP MULTIGRAIN SANDWICH BREAD

Units per case: x12 Slice: (13+2)

Slice thickness: 17mm +/- 2mm

Slice weight: 54g

6028 - THICK MULTIGRAIN SANDWICH BREAD

Units per case: x12 Slice: (18+2)

Slice thickness: 12.5mm +/- 2mm

Slice weight: 40g



MULTISEED SANDWICH BREAD

A SOFT, GOLDEN SANDWICH LOAF GENEROUSLY TOPPED AND BAKED WITH A MIX OF SEEDS FOR ADDED CRUNCH AND A DEEP, TOASTED FLAVOR. WHOLESOME AND FULL OF CHARACTER

6057 - THICK MULTISEED SANDWICH BREAD

Units per case: x12

Slice: (18+2)

Slice thickness: 12.5mm +/- 2mm

Slice weight: 40g

(Multiseed Topped)



6051 - DARK RYE SANDWICH BREAD

Slice: (18+2)

Units per case: x12

SPECIAL SANDWICH BREAD

6045 - SXL LIGHT MALTED GRAIN SANDWICH BREAD

Units per case: x12

Slice: (16+2)

Slice thickness: 14mm +/- 2mm

Slice weight: 45g

6043 - THICK MINI WHITE SANDWICH BREAD

Units per case: x20

Slice: (Thick)

6038 - EXTRA THICK MILK SANDWICH BREAD

Units per case: x12

Slice: (14+2)

Slice thickness: 16mm +/- 2mm

Slice weight: 51g

LATERAL SANDWICH BREAD

MEET THE SANDWICH LOAF THAT CHANGES EVERYTHING—EXPERTLY SLICED ALONG ITS LENGTH FOR MAXIMUM SURFACE AREA AND ENDLESS FILLING POSSIBILITIES. THIS HORIZONTALLY CUT LOAF DELIVERS PERFECTLY EVEN LAYERS, A SOFT, AIRY CRUMB, AND A GOLDEN CRUST THAT HOLDS IT ALL TOGETHER. WHETHER YOU'RE CRAFTING GOURMET SANDWICHES, SHARING PLATTERS, OR CREATING THAT LUXURY AFTERNOON TEA, IT'S DESIGNED TO IMPRESS FROM FIRST SLICE TO LAST BITE.

6559 - LATERALLY SLICED WHITE POPPY SEED SANDWICH BREAD

Slice: (8+2 Thick) Units per case: x5

Slice Thickness: 12.5mm +/- 2mm

Slice Weight: 80g

6055 - LATERALLY SLICED TURMERIC SANDWICH BREAD

Slice: (8+2 Thick) Units per case: x5

Slice Thickness: 12.5mm +/- 2mm

Slice Weight: 80g



6551 - LATERALLY SLICED WHITE SANDWICH BREAD

Units per case: x5 Slice: (8+2 Thick)

Slice Thickness: 12.5mm +/- 2mm

Slice Weight: 80g

6552 - LATERALLY SLICED MALTED SANDWICH BREAD

Units per case: x5 Slice: (8+2 Thick)

Slice Thickness: 12.5mm +/- 2mm

Slice Weight: 80g



BUNS AND ROLLS



03

BITESIZE BUNS

A DELIGHTFUL ASSORTMENT OF BITE-SIZED MINIATURE BUNS. IDEAL FOR SHARING, ENTERTAINING OR CREATING THOSE BITESIZE EXPLOSIONS OF FLAVOUR. THEY OFFER VERSATILITY AND CHARM TO ANY OCCASION

1247 - GLAZED BITESIZE MALTED BUN

(Sliced) Units per case: 24x4
Diametre: 2.5 Inches (Glazed)

1246 - GLAZED BITESIZE MILK BUN

(Sliced) Units per case: 24x4
Diametre: 2.5 Inches (Glazed)

1248 - 3 SEED AND GLAZED BITESIZE MILK BUN

(Sliced) Units per case: 24x4
Diametre: 2.5 Inches (3 Seed & Glazed)

1367 - BITE SIZE VEGAN BRIOCHE STYLE BUN

(Sliced) Units per case: 27x3
Diametre: 2.5 Inches (Glazed)

7398 - BITE SIZE ALL BUTTER BRIOCHE STYLE BUN

(Sliced) Units per case: 27x3
Diametre: 2.5 Inches (Glazed)

1362 - BITE SIZE SEEDED MALTED BUN (CONTAINING SOURDOUGH)

Units per case: x100
Diametre: 2.5 Inches (Floured)



A RANGE OF LIGHT AND FLUFFY TEACAKES WITH A SOFT, TENDER CRUMB. PERFECT TOASTED FOR BREAKFAST OR LOADED UP WITH YOUR FAVOURITE FILLINGS. BOTH FLAT, ROUND AND SERIOUSLY TASTY

TEACAKES

7633 - LARGE WHITE TEACAKE

(Sliced) Units per case: 10x4

3301 - LARGE WHOLEMEAL TEACAKE

(Sliced) Units per case: 20x2

1078 - FLOURED WHITE TEACAKE

(Sliced) Units per case: 20x2



POTATO BUNS

SOFT AND PILLOWY POTATO BUNS MADE WITH POTATO FOR EXTRA MOISTURE AND A DELICATE, SLIGHTLY SWEET FLAVOUR. LIGHT YET SATISFYING, THEY'RE PERFECT FOR BURGERS, SANDWICHES, OR SERVING WARM WITH BUTTER.



1364 - SMALL GLAZED BATCHED POTATO BUN

(Glazed)

Units per case: 14x6

1269 - GLAZED POTATO BAP

(Sliced)

Units per case: 14x6

Diametre: 3.75 Inches (Glazed)

8802 - POTATO BUN

(Sliced)

Units per case: 24x2

Diametre: 4 Inches

1296 - LARGE SUPER SOFT POTATO BUN

(Sliced)

Units per case: 24x2

Diametre: 4.75 Inches



SOME OF OUR UNIQUE AND SPECIAL BUNS. IF YOU'RE LOOKING FOR SOMETHING SLIGHTLY MORE INNOVATIVE OR DIFFERENT IN FLAVOUR... WE MAY HAVE THE BUN FOR YOU.

OTHER SPECIALITY



8817 - LARGE MALTED GRAIN BUN

(Sliced)

Units per case: 10x4

Diametre: 5 Inches

1297 - LARGE MILK BUN

(Sliced)

Units per case: 2x24

Diametre: 4.75 Inches

1369 - 2 SLIT SOFT POLENTA BREAKFAST ROLL

(Sliced)

Units per case: 18x2

(Polenta & 2 Slits)

1208 - BATCHED FLOURED SOFT WHITE BUN

Units per case: 8x6

(Sliced)

Diametre: 4 Inches

1017 - CLASSIC GLAZED BURGER BUN

Units per case: 40x2

(Sliced)

Diametre: 4 Inches

8813 - SEMOLINA TOPPED WHITE DELI ROLL

Units per case: 24x2

(Sliced)

Length: 6 Inches

1167 - LARGE SEMOLINA OVAL

Units per case: 20x2

(Sliced)

(Semolina Topped) Length: 6.25 Inches

8815 - SEED AND GRAIN TOPPED RUSTIC DELI ROLL

Units per case: 24x2 (Sliced)

(Glazed) Length: 6.25 Inches

(Seed & Grain topped)

OTHER SPECIALITY

1288 - SMALL SCOTCH MORNING ROLL

Units per case: 14x6 (Rice Cone Topped)

8734 - WHITE OVAL BUN

Units per case: 20x2 Length: 5 Inches

1291 - DOUBLE CUT LINSEED BURGER BUN

Units per case: 18x2

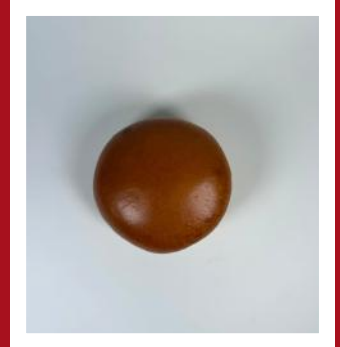


1293 - SMALL GLAZED BROWN BUN

Units per case: 2x30 (Sliced)
Diametre: 3.5 Inches

1242 - GLAZED MILK SLIDER

Units per case: 25x4 (Glazed)
Diametre: 2.5 Inches



4690 - TRADITIONAL BAKERS BASKET

Units per case: 8x6
Diametre: 3 Inches

A TRADITIONAL SELECTION OF ROLLS PAIRED TOGETHER. INCLUDING A WHITE SEMOLINA TOPPED BUN, A MALTED MIXED CEREAL BUN, A WHITE MIXED LINSEED FINGER ROLL AND A WHOLEMEAL CRACKED WHEAT FINGER ROLL.



HOTDOG ROLLS & SUBS



04

HOT DOG ROLLS

1011 - 8.5 INCH WHITE HOTDOG ROLL

Slice: Top Sliced Units per case: 2x24
Length: 8.5 Inches (Glazed)

1104 - 8.5 INCH WHITE HOTDOG ROLL

Slice: Top Sliced Units per case: 20x2
Length: 8.5 Inches

1105 - 8.5 INCH WHITE HOTDOG ROLL

Slice: Side Sliced Units per case: 20x2
Length: 8.5 Inches



1009 - 7.5 INCH SEMOLINA TOPPED WHITE HOTDOG ROLL

Slice: Top Sliced Units per case: 2x32
Length: 7.5 Inches

1107 - 4.5 INCH WHITE HOTDOG ROLL

Slice: Top Sliced Units per case: 40x2
Length: 4.5 Inches

1170 - 4.5 INCH WHITE HOTDOG ROLL

Slice: Top Sliced Units per case: 30x2
Length: 4.5 Inches

SOFT, GOLDEN-BAKED HOTDOG ROLLS CRAFTED FOR THE PERFECT BALANCE OF LIGHT TEXTURE AND GENTLE SWEETNESS. DESIGNED TO COMPLEMENT EVERYTHING FROM CLASSIC SAUSAGES TO GOURMET TOPPINGS, THESE ROLLS OFFER JUST THE RIGHT AMOUNT OF STRUCTURE AND SOFTNESS FOR A SATISFYING BITE EVERY TIME

7404 - 7 INCH ALL BUTTER BRIOCHE HOTDOG ROLL

Slice: Unsliced Units per case: 18x2
Length: 7 Inches (Glazed)

7439 - 7 INCH ALL BUTTER BRIOCHE HOTDOG ROLL

Slice: Top Sliced Units per case: 18x2
Length: 7 Inches (Glazed)

7472 - 7 INCH BRIOCHE HOTDOG ROLL

Slice: Top Sliced Units per case: 18x2
Length: 7 Inches (Glazed)

1106 - 6.5 INCH WHITE HOTDOG ROLL

Slice: Top Sliced Units per case: 28x2
Length: 6.5 Inches

8819 - 6.5 INCH WHITE HOTDOG ROLL

Slice: Side Sliced Units per case: 24x2
Length: 6.5 Inches

1020 - 6.5 INCH ALL BUTTER BRIOCHE HOTDOG ROLL

Slice: Top Sliced Units per case: 36x2
Length: 6.5 Inches (Glazed)



7463 - 3.5 INCH ALL BUTTER BRIOCHE HOTDOG ROLL

Slice: Unsliced Units per case: 30x2
Length: 4.5 Inches (Glazed)

SOFT AND LIGHTLY BAKED SUB ROLLS AND FOOTLONGS WITH A SMOOTH CRUST AND AIRY INTERIOR, PERFECT FOR FILLING WITH YOUR FAVORITE INGREDIENTS. VERSATILE AND SATISFYING, THEY'RE IDEAL FOR HEARTY SANDWICHES, HOT OR COLD.

SUB ROLLS

6296 - MALTED SUB ROLL

Slice: Unsliced Units per case: 20x2

Length: 8.5 Inches

1267 - SEMOLIA SUB ROLL

Slice: Side Sliced Units per case: 20x2

Length: 7.75 Inches

1131 - SEMOLIA SUB ROLL WITH SEMOLINA TOPPING

Slice: Hinge Sliced Units per case: 20x2

Length: 7.75 Inches



3505 - SOFT BROWN FOOTLONG

Slice: Unsliced Units per case: 2x14

Length: 11.75 Inches

3514 - SOFT WHITE FOOTLONG

Slice: Side Sliced Units per case: 2x14

Length: 11.75 Inches

3504 - SOFT WHITE FOOTLONG

Slice: Unsliced Units per case: 2x14

Length: 11.75 Inches

1284 - GLAZED WHITE SUB ROLL

Slice: Side Sliced Units per case: 2x40

Length: 8 Inches

6290 - WHITE SUB ROLL

Slice: Side Sliced Units per case: 20x2

Length: 8.5 Inches

1111 - WHOLEMEAL SUB ROLL

Slice: Side Sliced Units per case: 20x2

Length: 7.75 Inches



The image features three round, golden-brown brioche rolls arranged on a dark blue, textured surface. The rolls are positioned in the upper left, center, and lower right areas. The central roll is the most prominent, showing a slightly cracked and shiny crust. The background is a dark blue material with a subtle, wavy texture. The entire scene is framed by a white border.

BRIOCHE PRODUCTS

05

SMALL BRIOCHE LOAVES

1243 - ALL BUTTER BRIOCHE LOAF

Slice: (Un sliced)

Units per case: x9

7458 - ALL BUTTER BRIOCHE LOAF

Slice: (Extra Thick)

Units per case: x9

INDULGE IN THE RICH, BUTTERY DELIGHT OF OUR SMALL BRIOCHE LOAF. SOFT, GOLDEN, AND SLIGHTLY SWEET, THIS HANDCRAFTED LOAF IS PERFECT FOR BREAKFAST, SNACKS, OR DECADENT FRENCH TOAST. ITS TENDER CRUMB AND DELICATE FLAVOR MAKE IT AN EVERYDAY TREAT THAT'S BOTH COMFORTING AND LUXURIOUS.



GOLDEN AND FLUFFY, WITH A HINT OF SWEETNESS—OUR BRIOCHE BUN ADDS A GOURMET TOUCH TO ANY MEAL.

BRIOCHE BUNS

1117 - MEDIUM GOLDEN LISEED BRIOCHE BUN

Slice: (Sliced)

Units per case: 24x2

Diametre: 4 Inches

(Glazed)

7398 - GLAZED BITESIZE ALL BUTTER BRIOCHE BUN

Slice: (Sliced)

Units per case: 27x3

Diametre: 2.5 Inches

(Glazed)

7403 - LARGE GLAZED ALL BUTTER BRIOCHE BUN

Slice: (Sliced)

Units per case: 10x4

Diametre: 5 Inches

(Glazed)

7418 - GLAZED MINI ALL BUTTER BRIOCHE BUN

Slice: (Sliced)

Units per case: 36x2

Diametre: 3.25 Inches

(Glazed)

7464 - 3 SEED AND GLAZED ALL BUTTER BRIOCHE BUN

Slice: (Sliced)

Units per case: 10x4

Diametre: 5 Inches

(Glazed)

7475 - LARGE GLAZED BRIOCHE BUN

Slice: (Sliced)

Units per case: 10x4

Diametre: 5 Inches

(Glazed)

7490 - MEDIUM GLAZED BRIOCHE BUN

Slice: (Sliced)

Units per case: 24x2

Diametre: 4 Inches

(Glazed)

7399 - LARGE GLAZED BRIOCHE STYLE BUN

Slice: (Sliced)

Units per case: 24x2

Diametre: 4.5 Inches

(Glazed)



1159 - LARGE GLAZED VEGAN BRIOCHE STYLE BUN

Slice: (Sliced) Units per case: 10x4
Diametre: 5 Inches (Glazed)

7488 - MEDIUM GLAZED VEGAN BRIOCHE STYLE BUN

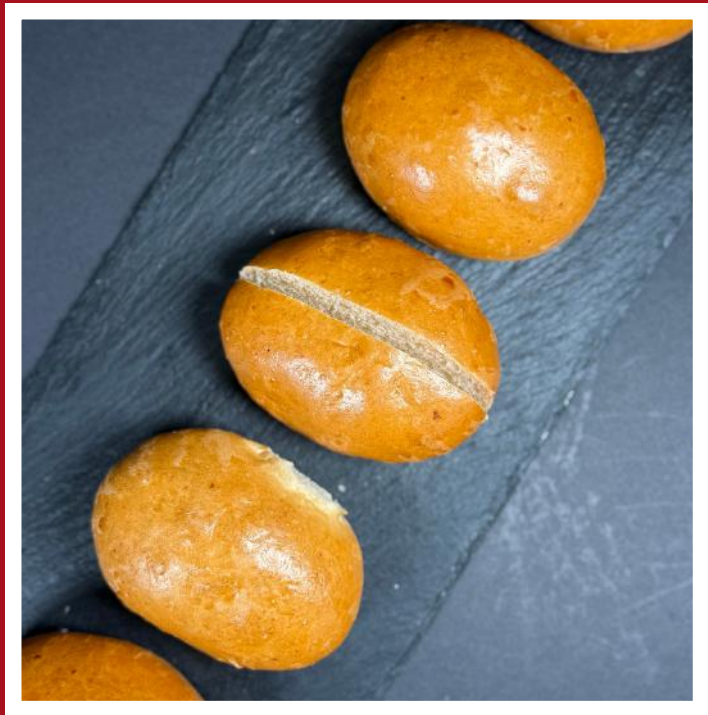
Slice: (Sliced) Units per case: 24x2
(Glazed)

1367 - BITESIZE GLAZED VEGAN BRIOCHE STYLE BUN

Slice: (Sliced) Units per case: 27x3
(Glazed)

1279 - GLAZED MINI VEGAN BRIOCHE STYLE HOT DOG

(Un sliced) Units per case: 42x2
(Glazed)



7491 - MEDIUM GOLDEN LINSEED AND GLAZED VEGAN BRIOCHE STYLE BUN

Slice: (Sliced) Units per case: 24x2
(Glazed) Diametre: 4 Inches

LIGHT, SOFT, AND BUTTERY, OUR BRIOCHE BAPS ARE PERFECT FOR BURGERS, DESSERTS, OR BRUNCH FAVORITES. WITH A DELICATE SWEETNESS AND PILLOWY TEXTURE, THEY TURN EVERY MEAL INTO A LITTLE INDULGENCE.

ALL BUTTER BRIOCHE BAPS

7427 - GLAZED ALL BUTTER BRIOCHE BAP

Diametre: 3.75 Inches Units per case: 12x2
(Glazed)

7460 - GLAZED ALL BUTTER BRIOCHE BAP

Diametre: 3.75 Inches Units per case: 24x2
(Glazed)

7462 - GLAZED ALL BUTTER BRIOCHE BAP

Diametre: 3.75 Inches Units per case: 24x2
(Sliced) (Glazed)

7471 - GLAZED BRIOCHE BAP

Diametre: 3.75 Inches Units per case: 12x2
(Sliced) (Glazed)

1254 - GLAZED ALL BUTTER BRIOCHE KNOT

Diametre: 3.75 Inches Units per case: 24x2
(Sliced) (Glazed)



SOFT, GOLDEN, AND LIGHTLY SWEET, OUR BRIOCHE HOT DOG ROLLS ARE THE PERFECT COMPLEMENT TO YOUR FAVORITE SAUSAGES AND FILLINGS. FLUFFY YET STURDY, THEY HOLD TOPPINGS BEAUTIFULLY.

BRIOCHE HOTDOG ROLLS

7404 - 7 INCH ALL BUTTER BRIOCHE HOTDOG ROLL

Slice: Unsliced Units per case: 18x2
Length: 7 Inches (Glazed)

7439 - 7 INCH ALL BUTTER BRIOCHE HOTDOG ROLL

Slice: Top Sliced Units per case: 18x2
Length: 7 Inches (Glazed)

7472 - 7 INCH BRIOCHE HOTDOG ROLL

Slice: Top Sliced Units per case: 18x2
Length: 7 Inches (Glazed)

1020 - 6.5 ALL BUTTER BRIOCHE HOTDOG ROLL

Slice: Top Sliced Units per case: 36x2
Length: 6.5 Inches (Glazed)

7463 - 3.5 INCH ALL BUTTER BRIOCHE HOTDOG ROLL

Slice: Unsliced Units per case: 30x2
Length: 4.5 Inches (Glazed)

7401 - GLAZED ALL BUTTER BRIOCHE HOTDOG ROLL

Slice: Top Sliced Units per case: 16x2
Length: 8.75 Inches (Glazed)

7474 - GLAZED BRIOCHE HOTDOG ROLL

Slice: Top Sliced Units per case: 16x2
Length: 8.75 Inches (Glazed)



FRUIT BRIOCHE

3503 - LARGE HIGH SPICED FRUIT BRIOCHE SQUARE

Slice: Unsliced Units per case: 25x2
Length: 5 Inches (Glazed)

3510 - GLAZED MEDIUM SPICED FRUIT BRIOCHE TEACAKE

Slice: Unsliced Units per case: 30x2
Length: 4.75 Inches (Glazed)

SWEET AND SPICED BRIOCHE PRODUCTS PACKED WITH FRUIT. PERFECT FOR THAT SWEET TREAT BREAKFAST OR AFTERNOON SNACK



FOCACCIA



06

OUR OILY AND CRISP FOCACCIA PRODUCTS WITH A RANGE OF SHAPES AND MOUTHWATERING FLAVOURS

1358 - PLAIN OILED FOCACCIA BUN CONTAINING SOURDOUGH

(Sliced)

Units per case: 30x2

(Oiled)

3515 - PLAIN FOCACCIA BUN CONTAINING SOURDOUGH

(Sliced)

Units per case: 30x2

Diametre: 4.75 Inches

3517 - ROSEMARY FOCACCIA SLIPPER CONTAINING SOURDOUGH

Lenth: 17.5 Inches

Units per case: 2x9

(Rosemary Topped)



1112 - ROSEMARY FOCACCIA STYLE BUN

Diametre: 4.75 Inches

Units per case: 20x2

7497 - ROSEMARY FOCACCIA TRAYBAKE

Units per case: 2x6

3518 - CRACKED BLACK PEPPER FOCACCIA BAP CONTAINING SOURDOUGH

Diametre: 3.75 Inches

Units per case: 2x40

(Oiled)

7496 - SUNDRIED TOMATO AND BASIL FOCACCIA TRAYBAKE

Units per case: 2x6



**CONTAINING
SOURDOUGH**



07

6516 - WHITE BLOOMER BREAD CONTAINING SOURDOUGH

Units per case: x8

Slice: (16+2)

6515 - WHITE BLOOMER BREAD CONTAINING SOURDOUGH

Units per case: x5

Slice: (Unsliced)

6049 - CROSS CUT WHITE BOULE CONTAINING SOURDOUGH

Units per case: 2x6

Slice: (Unsliced)

1026 - WHITE BUN CONTAINING SOURDOUGH

Units per case: 18x2

Slice: (Unsliced)

Diametre: 4.5 Inches

INFUSED WITH THE DISTINCTIVE TANG AND DEPTH OF SOURDOUGH, THESE PRODUCTS OFFER A REFINED TWIST ON CLASSIC FAVORITES. EXPERTLY CRAFTED FOR FLAVOUR AND TEXTURE, THEY DELIVER A UNIQUE BALANCE OF RICHNESS AND ARTISANAL QUALITY IN EVERY BITE.



1259 - POLENTA BREAKFAST BUN CONTAINING SOURDOUGH

(Sliced)

Units per case: 2x36

Diametre: 4 Inches

(Polenta Topped & 2 Slits)

6047 - FLOURED AND SEEDED MALTED COBURG CONTAINING SOURDOUGH

(Floured & Cross Cut)

Units per case: 2x6

6061 - FLOURED TRAD SHAPED WHITE BLOOMER CONTAINING SOURDOUGH

Slice: (16+2)

Units per case: x4

(Floured & 3 Cuts)

6044 - FLOURED TRAD SHAPED WHITE BLOOMER CONTAINING SOURDOUGH

Slice: (16+2)

Units per case: x6

(Floured & 3 Cuts)



6014 - WHITE OPEN TOP BLOOMER BREAD CONTAINING SOURDOUGH

Slice: (16+2)

Units per case: x11

6035 - WHITE SANDWICH BREAD CONTAINING SOURDOUGH

Slice: (14+2)

Units per case: x12



6030 - WHITE SANDWICH BREAD CONTAINING SOURDOUGH

Slice: (18+2)

Units per case: x12

5547 - FLOURED WHITE TRAD SHAPED BLOOMER CONTAINING SOURDOUGH

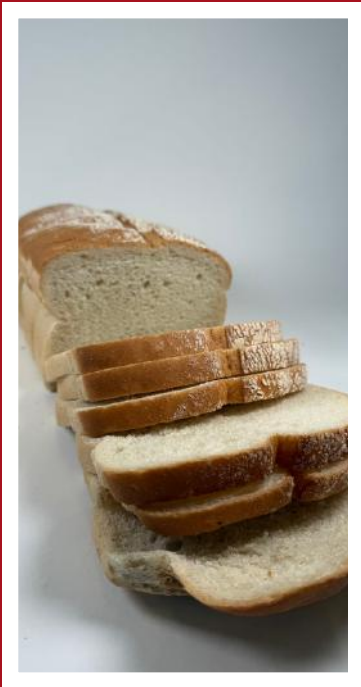
Slice: (14+2)

Units per case: x4

6715 - XL MALTED TRAD SHAPED BLOOMER CONTAINING SOURDOUGH

Slice: (16+2)

Units per case: x4



6014 - WHITE OPEN TOP BLOOMER CONTAINING SOURDOUGH

Slice: (16+2)

Units per case: x11

1362 - FLOURED AND SEEDED BITESIZE MALTED BUN CONTAINING SOURDOUGH

(Floured)

Units per case: x100

5546 - MEDIUM RYE OPEN TOP BLOOMER CONTAINING SOURDOUGH

Slice: (14+2)

Units per case: x5

6033 - FLOURED MEDIUM RYE OPEN TOP BLOOMER CONTAINING SOURDOUGH

Slice: (Un sliced)

Units per case: x5

(Floured)

3516 - 7 SEED AND GRAIN RUSTIC CIABATTA SQUARE CONTAINING SOURDOUGH

Slice: (Un sliced)

Units per case: 2x30

Diametre: 4.75 Inches

(7 Seed & Grain)



A close-up photograph of several slices of sourdough bread. The bread has a golden-brown crust and a light-colored, porous interior with many small holes. The slices are arranged on a dark, textured surface, possibly a wooden cutting board, with some small crumbs scattered around. The lighting is dramatic, highlighting the texture of the bread.

**PURE
SOURDOUGH**

08

SOURDOUGH LOAVES

4150 - TRAD SHAPED WHITE SOURDOUGH BLOOMER

Slice: (16+2)

Units per case: x6

4151 - XL TRAD SHAPED WHITE SOURDOUGH BLOOMER

Slice: (Thick)

Units per case: x4

(Floured & Hash Cut)

7072 - CAMPAILLOU SOURDOUGH

Units per case: 2x4

CRAFTED THROUGH A NATURAL FERMENTATION PROCESS, OUR SOURDOUGH DELIVERS A RICH, TANGY FLAVOUR WITH A PERFECTLY CRISP CRUST AND AIRY INTERIOR. EACH LOAF IS EXPERTLY BAKED TO BRING OUT ITS DISTINCTIVE CHARACTER, MAKING IT A TIMELESS CHOICE FOR QUALITY AND TASTE.





**TRADITIONAL
BREAD**

09

WHITE OPEN TOP BLOOMER BREAD

FRESHLY BAKED AND FULL OF FLAVOUR, OUR WHITE OPEN-TOP BLOOMERS FEATURE A CRISP CRUST AND A LIGHT, TENDER CRUMB. ITS CLASSIC SHAPE AND OPEN SPLIT TOP MAKE IT A VERSATILE EVERYDAY LOAF, PERFECT FOR EVERYTHING FROM BREAKFAST TOAST TO LUNCHTIME SANDWICHES.

6007 - DOORSTEP WHITE OPEN TOP BLOOMER

Slice: (13+2) Units per case: x8

Slice thickness: 17mm +/- 2mm

Slice Weight: 54g

6712 - SXL WHITE OPEN TOP BLOOMER

Slice: (16+2) Units per case: x5

Slice thickness: 14mm +/- 2mm

Slice Weight: 45g

6694 - SXL WHITE OPEN TOP BLOOMER

Slice: (16+2) Units per case: x11

Slice thickness: 14mm +/- 2mm

Slice Weight: 45g

6695 - SXL WHITE OPEN TOP BLOOMER

Slice: (Un sliced) Units per case: x11



MALTED OPEN TOP BLOOMER BREAD

6692 - SXL MALTED OPEN TOP BLOOMER

Slice: (16+2) Units per case: x11

Slice thickness: 14mm +/- 2mm

Slice Weight: 45g

6711 - SXL FLOURED MALTED OPEN TOP BLOOMER

Slice: (16+2) Units per case: x5

Slice thickness: 14mm +/- 2mm

Slice Weight: 45g

WHITE SPLIT TINS

6050 - FLOURED AND 1 CUT WHITE SPLIT TIN

Slice: (13+2) Slice Weight: 54g

Slice thickness: 17mm +/- 2mm

Units per case: x11

BAKED IN A TRADITIONAL SPLIT TIN, THIS WHITE LOAF FEATURES ITS SIGNATURE TWIN-TOP SHAPE, CREATING A SOFT, EVEN TEXTURE AND PERFECTLY PORTIONED SLICES. THE UNIQUE BAKE ENHANCES BOTH STRUCTURE AND SOFTNESS, DELIVERING A CLASSIC LOAF WITH ADDED CHARACTER AND VERSATILITY.

7581 - EXTRA THICK WHITE SPLIT TIN

Slice: (14+2) Units per case: x8

Slice thickness: 16mm +/- 2mm

Slice Weight: 51g

7574 - EXTRA THICK WHITE SPLIT TIN

Slice: (14+2) Units per case: x5

Slice thickness: 16mm +/- 2mm

Slice Weight: 51g

6691 - SXL WHITE SPLIT TIN

Slice: (16+2) Slice Weight: 51g

Slice thickness: 16mm +/- 2mm

Units per case: x11

MALTED SPLIT TINS

A SOFT, MALTED SPLIT TIN LOAF WITH A RICH, GENTLY SWEET FLAVOUR AND A TENDER CRUMB. ITS LIGHT TEXTURE AND SUBTLE MALTINESS MAKE IT PERFECT FOR EVERYDAY SANDWICHES, TOAST, OR SIMPLY ENJOYED WITH BUTTER.

7582 - EXTRA THICK MALTED SPLIT TIN

Slice: (14+2) Units per case: x8
Slice thickness: 16mm +/- 2mm
Slice Weight: 51g

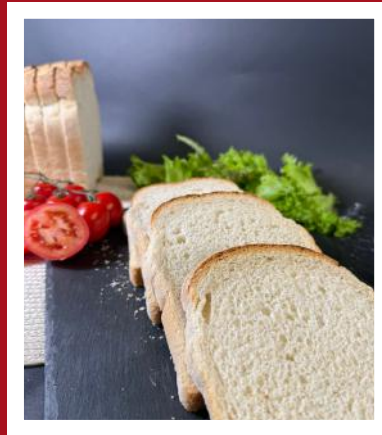
7575 - EXTRA THICK MALTED SPLIT TIN

Slice: (14+2) Units per case: x5
Slice thickness: 16mm +/- 2mm
Slice Weight: 51g



6690 - SXL MALTED SPLIT TIN BREAD

Slice: (16+2) Units per case: x11
Slice thickness: 14mm +/- 2mm
Slice Weight: 45g



SEED SPLIT TIN

6646 - SEED & GRAIN SPLIT TIN

Slice (14+2) Units per case: x5
Seed & Grain Topped



BROWN SPLIT TIN

6054 - FLOURED BROWN SPLIT TIN

Units per case: x11 Slice: (13+2)
Slice thickness: 14mm +/- 2mm
Slice Weight: 45g



MEDIUM RYE OPEN TOP BLOOMER CONTAINING SOURDOUGH

5546 - MEDIUM RYE OPEN TOP BLOOMER CONTAINING SOURDOUGH

Slice: (14+2) Units per case: x5
Slice thickness: 16mm +/- 2mm
Slice Weight: 51g

6033 - FLOURED MEDIUM RYE OPEN TOP BLOOMER CONTAINING SOURDOUGH

Unliced Units per case: x5



DUSTED CROWN

A BEAUTIFULLY RUSTIC CENTERPIECE, THE DUSTED CROWN LOAF IS CRAFTED TO BRING BOTH ELEGANCE AND COMFORT TO THE TABLE. ITS DISTINCTIVE CROWN SHAPE IS LIGHTLY COATED WITH A FINE DUSTING OF FLOUR, GIVING IT AN ARTISANAL, BAKERY-FRESH APPEARANCE.

6645 - MALTED DUSTED CROWN BREAD

Slice: (14+2) Units per case: x5

6644 - WHITE DUSTED CROWN BREAD

Slice: (14+2) Units per case: x5



TRADITIONALLY SHAPED BREAD PERFECT FOR THOSE SHOW STOPPING TABLE OFFERINGS. CLASSY, RUSTIC AND FULL OF FLAVOUT

TRAD SHAPED

6642 - CRACKED WHEAT TOPPED MALTED TRAD SHAPED BLOOMER

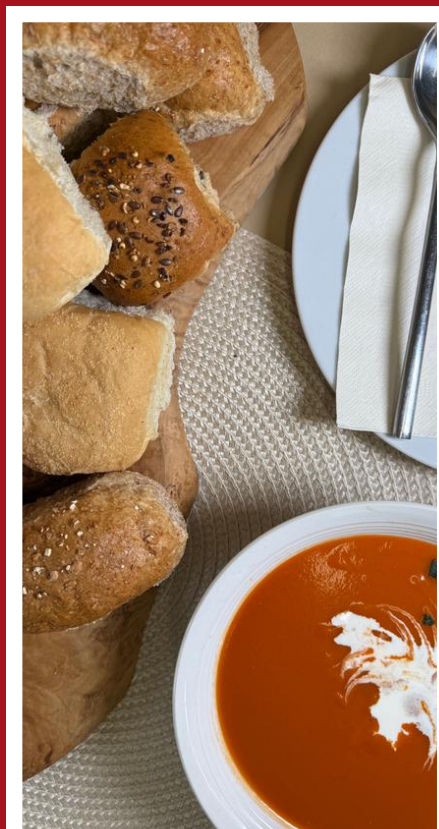
(Un sliced) Units per case: x4

6678 - WHITE TRAD SHAPE BLOOMER

Slice: (14+2) Units per case: x4

6641 - LONG WHITE BLOOMER

(Un sliced) Units per case: x4



TRAD ROLLS

4690 - TRADITIONAL BAKERS BASKET

Units per case: 8x6
Diametre: 3 Inches

CIABATTA



10

CIABATTA

CRISP ON THE OUTSIDE, SOFT AND AIRY ON THE INSIDE, OUR CIABATTA BREAD IS PERFECT FOR SANDWICHES, PANINIS, OR SIMPLY DIPPING IN OLIVE OIL. ITS RUSTIC TEXTURE AND SUBTLE FLAVOR MAKE EVERY BITE SATISFYING

3516 - 7 SEED AND GRAIN RUSTIC CIABATTA SQUARE CONTAINING SOURDOUGH

Slice: (Un sliced) Units per case: 2x30
(7 Seed & Grain) Diametre: 4.75 Inches

3502 - (F100) BULK WHITE CIABATTA SLIPPER

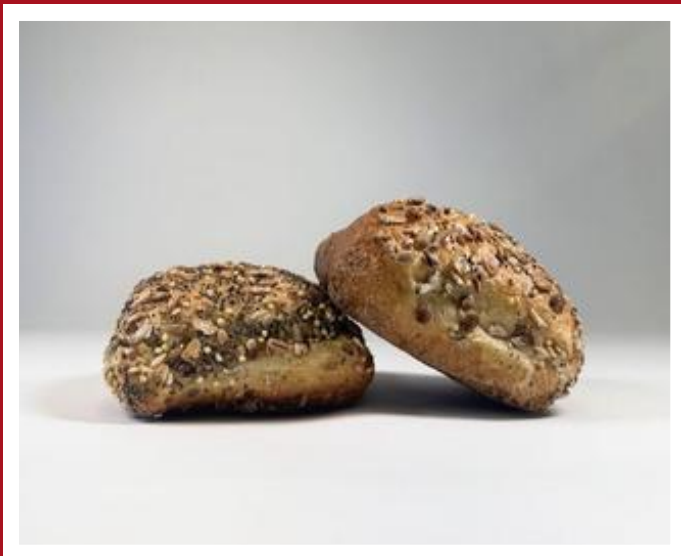
Slice: (Un sliced) Units per case: 2x25
Length: 6.5 Inches

6322 - LARGE CIABATTA

Slice: (Un sliced) Units per case: x12

3519 - PUMPKIN AND GLAZED RUSTIC COUNTRY CIABATTA SQUARE CONTAINING SOURDOUGH

Slice: (Un sliced) Units per case: 2x30
Diametre: 4.75 Inches





BREAKFAST MUFFINS

11

OUR CLASSIC ENGLISH BREAKFAST MUFFINS ARE CRAFTED FOR VERSATILITY AND CONSISTENT QUALITY. LIGHT, AIRY, AND GOLDEN-BAKED, EACH MUFFIN OFFERS A TENDER CRUMB WITH A SUBTLE, BUTTERY FLAVOUR—PERFECT FOR TOASTING OR SERVING FRESH.

BREAKFAST MUFFINS

4656 - WHITE BREAKFAST MUFFIN

(Sliced) Units per case: 12x4
Diametre: 3.75 Inches

1176 - WHITE BREAKFAST MUFFIN

(Sliced) Units per case: 2x60
Diametre: 3.75 Inches

1274 - LIGHT BAKE SEMOLINA MUFFIN

(Sliced) Units per case: 30x4
Diametre: 3.75 Inches

1173 - WHITE BREAKFAST MUFFIN

(Sliced) Units per case: 30x4
Diametre: 4 Inches

1215 - BREAKFAST MUFFIN

(Sliced) Units per case: 18x4
Diametre: 3.75 Inches

1177 - WHITE BREAKFAST MUFFIN

(Sliced) Units per case: 18x4
Diametre: 3.5 Inches



FRUIT PRODUCTS



12

SOFT, SPICED AND LIGHTLY SWEET, OUR HOT CROSS BUNS ARE FILLED WITH PLUMP DRIED FRUITS AND FINISHED WITH A HAND PIPED CROSS. THE BEST SEASONAL TREAT!

HOT CROSS BUNS

5611 - GLAZED HOT CROSS BUN

Slice: Unsliced Units per case: 12x2
Diameter: 4 Inches (Glazed)

1363 - GLAZED HOT CROSS BUN

Slice: Unsliced Units per case: 24x4
Diameter: 4 Inches (Glazed)

4124 - GLAZED HOT CROSS BUN

Slice: Unsliced Units per case: 12x4
Diameter: 4 Inches (Glazed)

1283 - GLAZED LUXURY HOT CROSS BUN

Slice: Unsliced Units per case: 12x4
Diameter: 3.25 Inches (Glazed)



SCONES

7909 - BUTTERMILK SULTANA SCONE

Diameter: 2.5 Inches
Units per case: 40x3

7973 - LARGE BUTTERMILK SULTANA SCONE

Diameter: 3.4 Inches
Units per case: x24

LIGHT, TENDER, AND SLIGHTLY CRUMBLY, OUR SCONES ARE PERFECT FOR BREAKFAST, AFTERNOON TEA, OR A SWEET SNACK. ENJOY THEM PLAIN, WITH JAM, OR TOPPED WITH CREAM FOR A CLASSIC TREAT.

7932 - BUTTERMILK SULTANA SCONE

Diameter: 2.5 Inches
Units per case: 48x3



FRUIT TEACAKES

PACKED WITH PLUMP, JUICY FRUITS AND A HINT OF SPICE, OUR FRUIT TEACAKES ARE A COZY, FLAVOURFUL TREAT PERFECT FOR TEA OR ON-THE-GO INDULGENCE. DELICATELY BAKED FOR A GOLDEN CRUST AND SOFT, FRUITY CENTER.

6331 - SLICED FRUITED TEACAKE

Slice: Sliced Units per case: 10x4

Diameter: 4.75 Inches

8220 - LARGE FRUITED TEACAKE

Slice: Sliced Units per case: 10x4

Diameter: 5 Inches

1294 - LARGE LIGHTLY SPICED GLAZED FRUIT TEACAKE

Slice: Sliced Units per case: 30x2

Diameter: 4.5 Inches

3510 - GLAZED MEDIUM SPICED FRUIT BRIOCHE SQUARE

Slice: Sliced Units per case: 30x2

Diameter: 4.75 Inches

3503 - GLAZED LARGE HIGH SPICED FRUIT BRIOCHE SQUARE TEACAKE

Slice: Unsliced Units per case: 25x2

Diameter: 5 Inches



SOFT, GOLDEN, AND IRRESISTIBLY FRAGRANT, OUR CINNAMON SUGAR FRUIT BUN IS A COMFORTING TWIST ON A CLASSIC FAVOURITE. EACH BUN IS FRESHLY BAKED TO A LIGHT, FLUFFY TEXTURE, THEN GENEROUSLY SWIRLED WITH WARM CINNAMON AND COATED IN A DELICATE LAYER OF SPARKLING SUGAR FOR THE PERFECT HINT OF SWEETNESS. JUICY PIECES OF DRIED FRUIT ARE FOLDED INTO THE DOUGH, ADDING BURSTS OF NATURAL FLAVOR IN EVERY BITE.

FRUIT BUN

1370 - BATCHED CINNAMON SUGAR TOPPED ALL BUTTER CINNAMON & CURRANT BRIOCHE BUN

Slice: Unsliced Units per case: 8x6

(Cinnamon sugar topped) (Glazed)

1379 - GLAZED BATCHED ALL BUTTER SULTANA BRIOCHE BUN

Slice: Unsliced Units per case: 8x6

(Glazed)



CONFECTIONARY



13

DEEP MINCE PIES

RICH, BUTTERY PASTRY GENEROUSLY FILLED WITH SPICED, FRUITY MINCEMEAT, OUR DEEP-FILLED MINCE PIES ARE A FESTIVE FAVOURITE. PERFECTLY INDULGENT AND FULL OF HOLIDAY FLAVOUR IN EVERY BITE.

9503- DEEP CRUMBLE TOPPED MINCE PIE

Units per case: 6x4

9514 - DEEP STAR TOPPED MINCE PIE

Units per case: 6x4 (Dusted)

9501 - DEEP VIENNESE TOPPED MINCE PIE

Units per case: 6x4 (Dusted)



LIGHT, CRISP PASTRY WITH A DELICATE LAYER OF SPICED FRUIT FILLING, OUR SHALLOW-FILLED MINCE PIES OFFER A PERFECTLY BALANCED, SUBTLY SWEET FESTIVE TREAT.

SHALLOW MINCE PIES

9506 - SHALLOW CRUMBLE TOPPED MINCE PIE

Units per case: 6x4

9513 - SHALLOW STAR TOPPED MINCE PIE

(Dusted) Units per case: 6x4

9510 - SHALLOW VIENNESE TOPPED MINCE PIE

(Dusted) Units per case: 6x4



LUXURY DEEP MINCE PIES

ENCASED IN RICH, ALL-BUTTER PASTRY AND GENEROUSLY FILLED WITH DECADENT, SPICED MINCEMEAT, OUR LUXURY DEEP MINCE PIES DELIVER A TRULY INDULGENT FESTIVE EXPERIENCE.



9516 - LUXURY DEEP APPLE CRUMBLE TOPPED MINCE PIE

Units per case: 6x4

9512 - LUXURY DEEP CRUMBLE TOPPED MINCE PIE

Units per case: 6x4

9502 - LUXURY DEEP STAR TOPPED MINCE PIE

Units per case: 6x4

(Dusted)

9505 - LUXURY DEEP VIENNESE TOPPED MINCE PIE

Units per case: 6x4

(Dusted)

LUXURY SHALLOW MINCE PIES

9509 - LUXURY SHALLOW STAR TOPPED MINCE PIE

Units per case: 6x4

(Dusted)

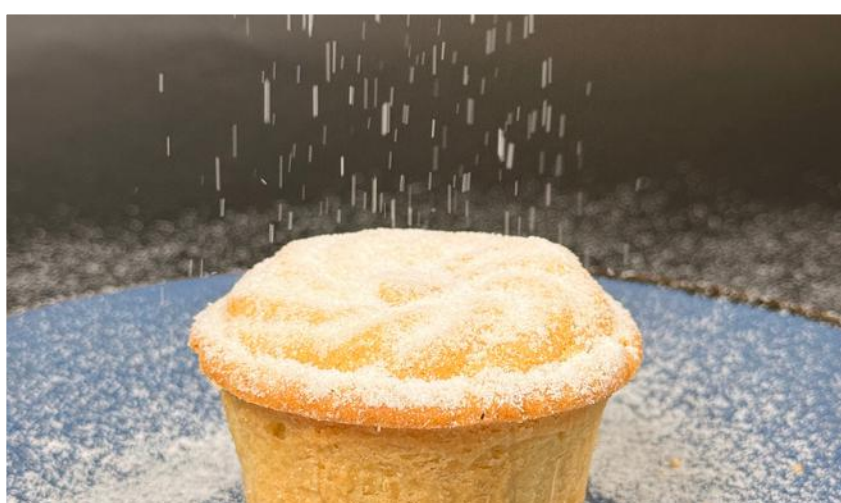
9507 - LUXURY SHALLOW VIENNESE TOPPED MINCE PIE

Units per case: 6x4

(Dusted)

9515 - LUXURY SHALLOW CRUMBLE TOPPED MINCE PIE

Units per case: 6x4



SPECIALITY PRODUCTS



14

1167 - LARGE SEMOLINA OVAL

(Sliced) Units per case: 20x2

(Semolina Topped)

Length: 6.25 Inches

8815 - GLAZED SEED & GRAIN DELI ROLL

(Sliced) Units per case: 24x2

Length: 6 Inches

8813 - SEMOLINA TOPPED WHITE DELI ROLL

(Sliced) Units per case: 24x2

Length: 6 Inches



7496 - SUNDRIED TOMATO & BASIL FOCACCIA TRAYBAKE

Units per case: 2x6

1298 - GLAZED SUNDRIED TOMATO & ONION SUB ROLL

Sliced: (Deep Top Sliced)

Units per case: 2x24

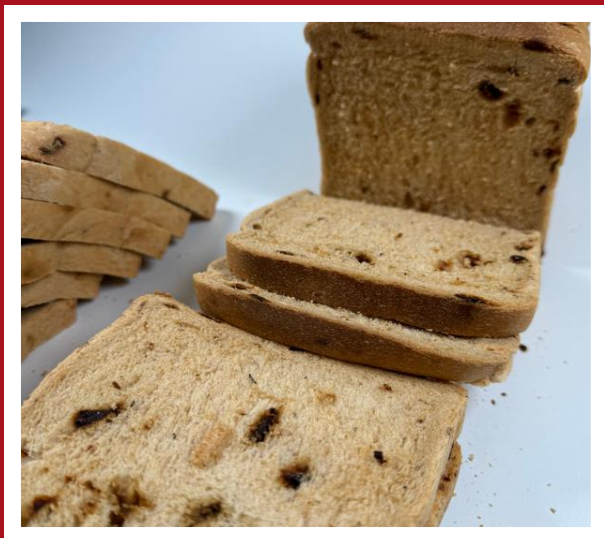
Length: 9.5 Inches

1286 - GLAZED SUNDRIED TOMATO AND ONION SUBROLL

Sliced: (Deep Top Sliced)

Units per case: 24x2

Length: 9.5 Inches



6703 - DARK SEED AND GRAIN BLOOMER

Slice: (14+2)

Units per case: x11

7356 - DARK SEEDED MALTED BLOOMER

Slice: (16+2)

Units per case: x8

6026 - SUNDRIED TOMATO AND ONION SANDWICH BREAD

Sliced: (14+2)

Units per case: x12

6027 - TUMERIC SANDWICH BREAD

Sliced: (14+2)

Units per case: x12

7065 - KALONJI SEED WHITE SANDWICH BREAD

Sliced: (18+2)

Units per case: x12

6032 - WHITE SANDWICH BREAD WITH ONION

Sliced: (18+2)

Units per case: x12

6063 - WHITE TIGER BATARD BLOOMER BREAD

Sliced: (13+2)

Units per case: x8



TRADE
ONLY

lunch!

The contemporary food to go show

16-17 SEPTEMBER 2026
EXCEL | LONDON

We're delighted
to be exhibiting at
lunch!

PART OF
THE LONDON
FOOD & DRINK
FESTIVAL 2026

KEEP UP WITH US ON SOCIALS



FOSTERSBAKERY /

CHECK OUT OUR WEBSITE

FOSTERSBAKERY.CO.UK