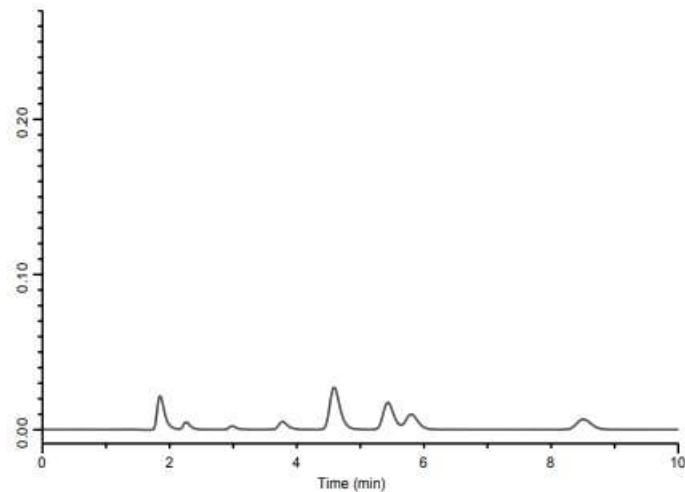


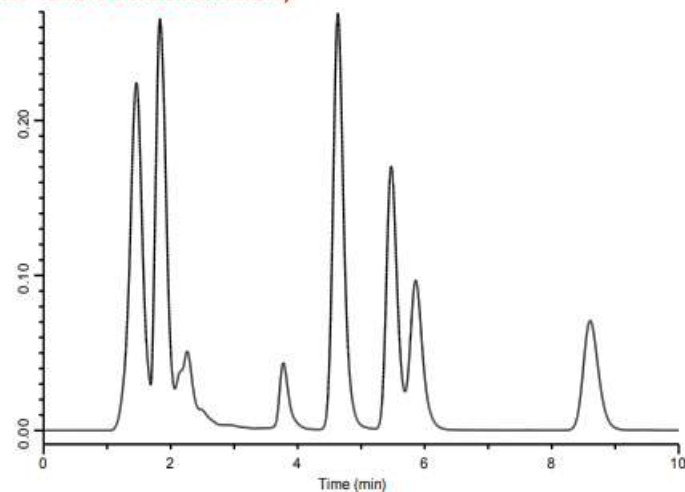
Without MonoSpin C18



## Purification of Serum using MonoSpin C18 L Type (Large)

Sample Volume : 5000  $\mu\text{L}$

Elution Volume : 500  $\mu\text{L}$   
(10-fold concentration)



5000  $\mu\text{L}$  serum sample was purified with MonoSpin C18 and enriched by 500  $\mu\text{L}$ .

### Conditions

Column : Inertsil ODS-3 (5  $\mu\text{m}$ , 150 x 4.6 mm I.D.)  
Eluent :  $\text{CH}_3\text{CN}/3 \text{ mM KH}_2\text{PO}_4, 27 \text{ mM SDS} = 48 = 52$   
Flow Rate : 1.0 mL/min

Col.Temp : 40  $^\circ\text{C}$   
Injection Vol. : 1  $\mu\text{L}$   
Detection : 230 nm