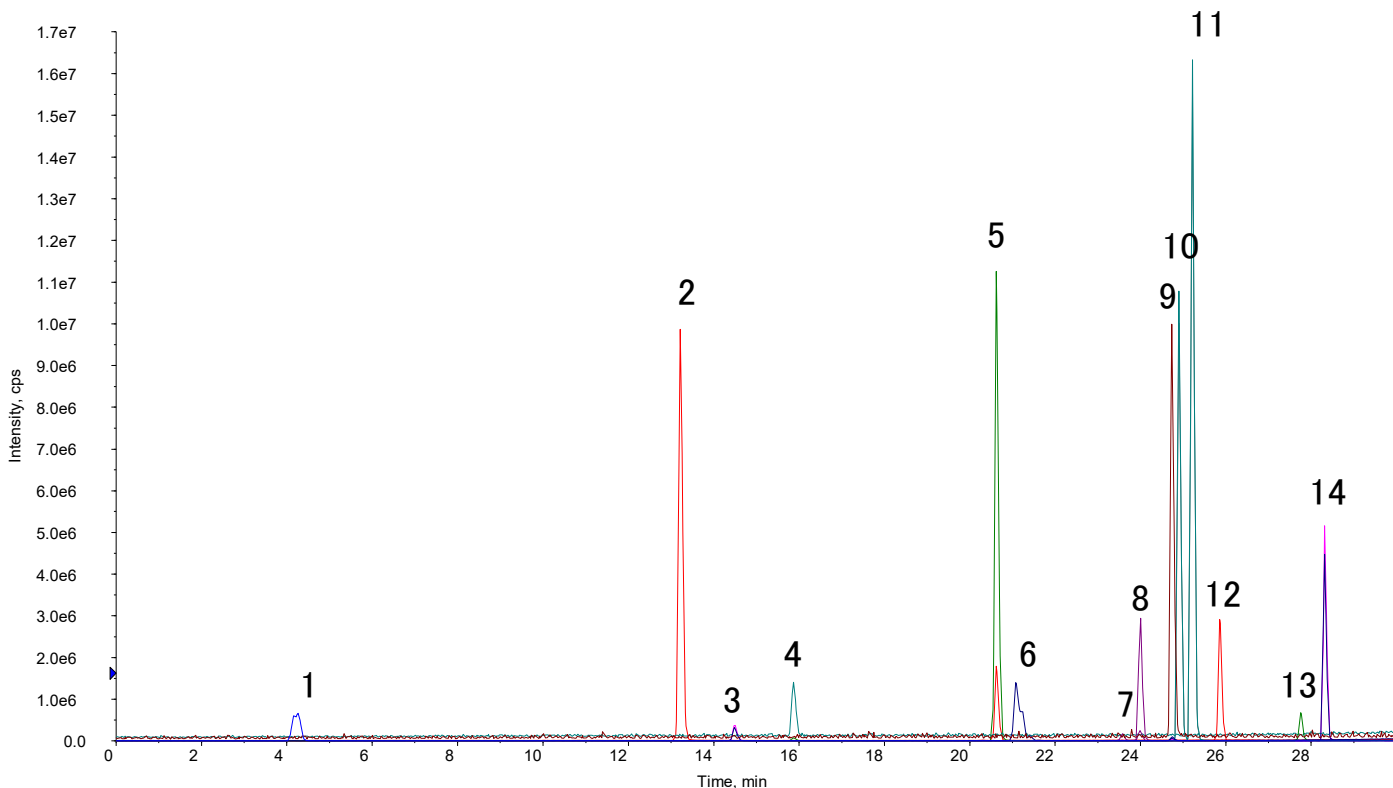


# InertSearch for LC

Inertsil Applications

## Analysis of Phosphate ester flame retardants (PFRs)

Data No. LB703-0696



### Conditions

**System** : Exion HPLC system  
QTRAP 6500+ (Sciex)

**Column** : InertSustainSwift C18 (GL Sciences Inc.)  
(1.9  $\mu\text{m}$ , 100 x 2.1 mm I.D.)

**Column Cat. No.** : 5020-88230

**Delay Column** : Delay Column for PFAS (GL Sciences Inc.)  
(30 x 3.0 mm I.D.) x 2 columns

**Column Cat. No.** : 5020-90005

**Eluent** : A)  $\text{CH}_3\text{OH}$   
: B) 0.1 %  $\text{CH}_3\text{COOH}$  in  $\text{H}_2\text{O}$

Time (min)	A%	B%
0.0	10	90
30.0	100	0
33.0	100	0
33.1	10	90
45.0	10	90

Analyte: each 50  $\mu\text{g/L}$

No.	Analyte	Q1	Q3	R.T. (min)	
1	Trimethyl phosphate	TMP	141	109	4.3
2	Triethyl phosphate	TEP	183	99	13.2
3	Diphenyl phosphate	DiPhP	251	77	14.5
4	Tris(2-chloroethyl) Phosphate	TCEP	285	63	15.9
5	Tripropyl phosphate	TPP	225	99	20.1
6	Tris(1-chloro-2-propyl) phosphate (Tris(2-chloro-1-methylethyl) Phosphate)	TCPP	327	251	21.1
7	Tris(1,3-dichloro-2-propyl) phosphate	TDCPP	431	99	23.6
8	Tris(2-ethylhexyl) phosphate	TEHP	435	99	24.0
9	Triphenyl phosphate	TPhP	327	152	24.7
10	Triisobutyl phosphate	TiBP	267	99	24.9
11	Tributyl phosphate	TBP	267.2	99	25.2
12	Tris(2-butoxyethyl) Phosphate	TBEP	399	45	25.9
13	Tricresyl phosphate	TCP	369	91	27.8
14	2-Ethylhexyl Diphenyl Phosphate	DPEHP	251.2	77	28.3

**Flow rate** : 0.2 mL/min

**Col. Temp.** : 40  $^\circ\text{C}$

**Detection** : LC/MS/MS  
(QTRAP 6500+ : ESI, Positive, SRM)  
CUR CAD IS TEM GS1 GS2  
10 5 5500 500 20 20

**Injection Vol.** : 2  $\mu\text{L}$

**Sample** : Standard

GL Sciences

# InertSearch for LC

## Inertsil Applications

