



HARROW
INTERNATIONAL
SCHOOL
BANGKOK

Harrow International School Bangkok

School Profile 2025-2026

45 Soi Kosumruamchai 14, Kosumruamchai Road, Don Mueang Subdistrict,
Don Mueang District, Bangkok 10210, Thailand
Tel. +66 2503 7222
www.harrowschool.ac.th

Educational Excellence *for* Life and Leadership

The School and Community

Harrow International School Bangkok is one of a family of ten AISL Harrow schools. Links between the schools are strong, as demonstrated by a shared Board of Governors and staff movement within the group. We are a co-educational day and boarding school providing a British style independent boarding school experience, in English, in an Asian context at our state-of-the-art campus in north Bangkok. There is a strong pastoral focus in the school through its House system. The curriculum is taught in English.

Our Values

Harrow Bangkok is absolutely committed to being a truly world-class school, rooted in the 4 Harrow values:

Courage

encourages us to innovate and take risks, inspiring change for the better.

Honour

is about doing the right thing, having the highest standards and leading by example.

Humility

asks us to recognise that one's self is a work in progress and that struggling with one's weaknesses is essential to growth.

Fellowship

means building binding, constructive relationships that help us all to make a positive contribution.

Co-Curricular Programme

A Harrow Bangkok education is meaningful and holistic, and for life. We offer a wide and diverse range of co-curricular activities which enrich and extend the academic studies of Harrow Bangkok students, including creative, community and sports activities. Students develop leadership skills and empathy through active involvement in charity and community service.

We celebrate students who move beyond the classroom to show a commitment to an all-round education, making ethical decisions that make them better global citizens.



British International School founded in **1998**



Affiliated with Harrow School founded in **1572**



The first Harrow International School in Asia



Student ages between **18 months - 18 years**



4 boarding houses



British curriculum **IGCSE & A Level** taught in English



33 student nationalities

70%

Students achieved A*/A grades at A Level

71%

Students achieved A*/A grades at IGCSE

98%

Students secure places at their first-choice universities

Head Master

James Murphy-O'Connor
james_moc@harrowschool.ac.th

Head of Upper School

Paul Johnson
paul_jo@harrowschool.ac.th

Head of Sixth Form

Amanda Poel
amanda_po@harrowschool.ac.th

Head of SR5

Andy Brown
andy_br@harrowschool.ac.th

Head of Careers & University Guidance

Pia Babcock
pia_ba@harrowschool.ac.th

University Counsellors

Priya Jadeja
priya_ja@harrowschool.ac.th

Alberto Robledo-Madera
alberto_ro@harrowschool.ac.th

Tum Klaihangwa
tum_k@harrowschool.ac.th
(Thai universities)



University destinations Class of 2025

United Kingdom	34%	China	6%	Japan	1%
Thailand	18%	Canada	2%	Germany	1%
USA	15%	Hong Kong	2%		
Australia	14%	Spain	2%		

IGCSE (International General Certificate in Secondary Education)

IGCSE courses are taught to students between the ages of 14-16 (Years 10 & 11). Students choose a range of subjects whilst continuing to study English, Maths and Science. At the end of Year 11 (aged 16), students sit external IGCSE examinations. Students will typically complete eight IGCSE courses. Very able students may complete one or two additional IGCSE courses.

IGCSE Subjects

All students study the core subjects of IGCSE English and Mathematics. Students then choose from the following additional IGCSE subjects (they must select at least one science and are strongly encouraged to select at least one language): Art, Biology, Business Studies, Chemistry, Computer Science, Design Technology, Drama, Economics, English Literature, French, Geography, History, Japanese, Mandarin, Music, Physics, Physical Education and Thai. Students also follow a non-assessed Physical Education, Futures (Life Skills) and Personal, Social and Health Education (PSHE) curriculum.

AS (Advanced Subsidiary) and A (Advanced) Levels

In Sixth Form (Years 12 and 13), students complete their A Level courses. Advanced Level courses are subject based qualifications which are externally assessed by approved examination boards. Students can study up to AS Level and receive credit, or continue to complete full A Levels. Students will typically study four AS courses, sitting external examinations at the end of Year 12. The majority of students will continue on to complete three full A Levels, sitting external examinations at the end of Year 13. In addition to A Levels students also study for the EPQ or the Harrow Research Project (HRP). Harrow Bangkok uses Cambridge, Edexcel and AQA exam boards.

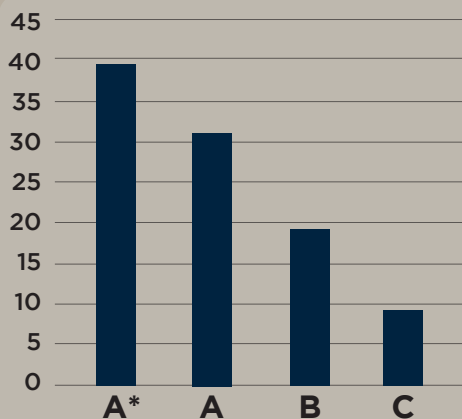
AS and A Level Subjects

AS and A Level courses are offered in Art & Design, Biology, Business Studies, Chemistry, Chinese, Computer Science, Design Technology, Drama, Economics, English Literature, French, Further Mathematics, Geography, History, Japanese, Mathematics, Media Studies, Music, Physical Education, Physics, Psychology, and Travel & Tourism.

University Applications

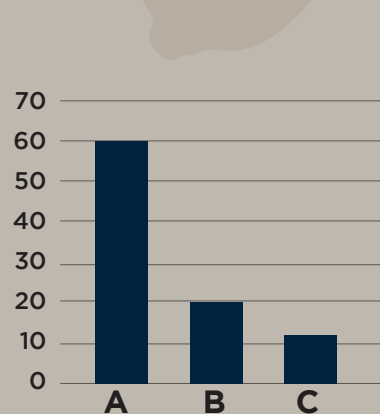
Students apply to universities all over the world. Each student is supported with a maximum of 10 applications by their university guidance counsellor.

IGCSE Level A*-C Grades 2025



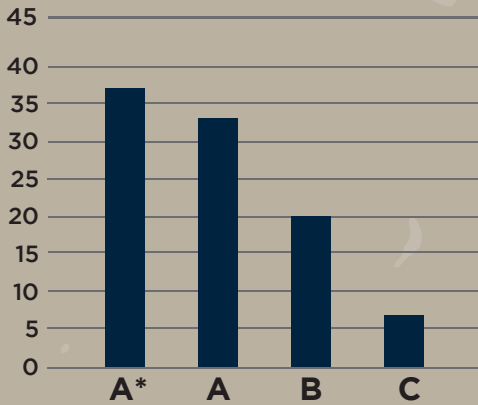
■ % of Entries from Harrow Bangkok

AS Level A-C Grades 2025

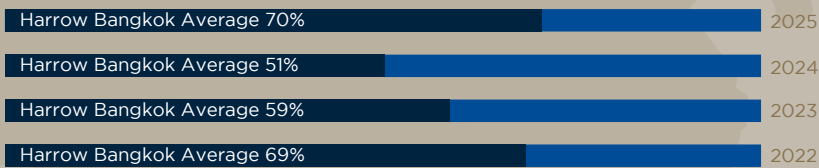


A Level Results

A*-C Grades 2025



% of A*/A Grades Achieved



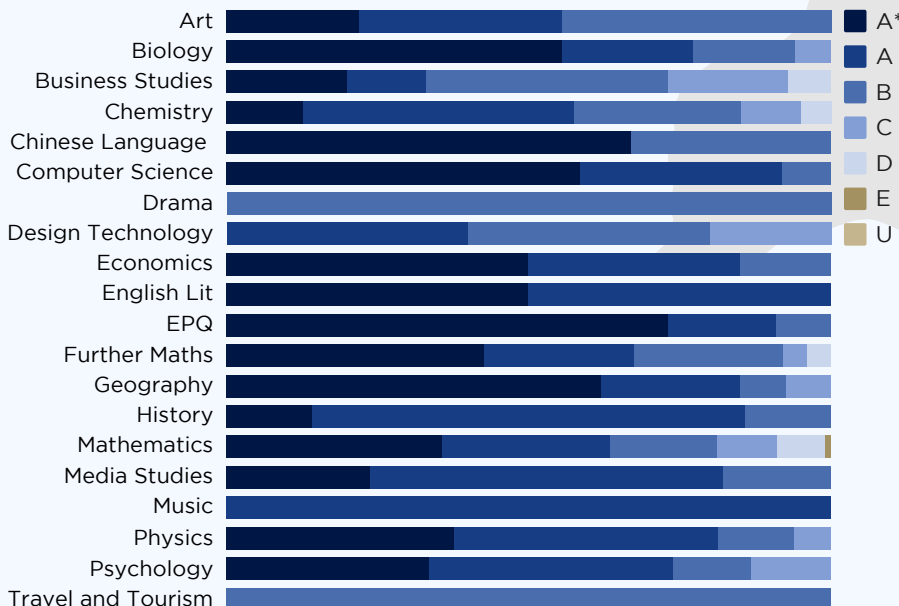
% of A*/B Grades Achieved



% of A*/C Grades Achieved



Grade by Department | 2025



Enrolment 2024-25

Total enrolment: 1851
 Class of 2026: 119
 Early Years: 270
 Pre Prep: 527
 Prep: 404
 Senior School: 650

Grade designations follow the British school system (Year 10 = Grade 9; Year 11 = Grade 10; Year 12 = Grade 11; Year 13 = Grade 12)

Grading System

AS Level courses are graded on an A-E scale. A level courses are graded on an A*-E scale. IGCSE grades are either graded on an A*-E scale or 9-1.

Class Rank & GPA

Harrow Bangkok does not rank students or calculate GPA for students. There is no appropriate system that would effectively reflect the grading system of the IGCSE and A Levels to a GPA.

Academic Calendar

Our school year is 180 days, running from mid-August to the end of June, divided into three terms.

Harrow Bangkok graduates from the classes 2015-2025 have attended the following universities:

UNITED KINGDOM

Aberystwyth University
Arts University Bournemouth
Aston University
Bath Spa University
Birmingham City University
Bournemouth University
BIMM Institute
City, University of London
Goldsmiths, University of London
Hull York Medical School
Imperial College London
Keele University
King's College London
Kingston University
Lancaster University
Leeds Beckett University
London School of Economics
Loughborough University
Manchester Metropolitan University
Newcastle University
Nottingham Trent University
Oxford Brookes University
Plymouth Marjon University
Queen Mary University of London
Queen's University, Belfast
Ravensbourne University of London
Robert Gordon University
Royal Conservatoire of Scotland
Royal Holloway University of London
Regent's University London
University of Chester
University of Sheffield
University of Plymouth
University College London
University for the Creative Arts
University of Aberdeen
University of Bath
University of Brighton
University of Bristol
University of Cambridge
University of Cardiff
University of Durham
University of East Anglia
University of Edinburgh
University of Essex
University of Exeter
University of Glasgow
University of Greenwich
University of Kent
University of Leicester
University of Leeds
University of Liverpool
University of Manchester
University of Nottingham
University of Oxford
University of Portsmouth
University of Reading
University of Roehampton
University of Southampton
University of St Andrews
University of Strathclyde
University of Sunderland
University of Surrey
University of Sussex
University of the Arts London
University of Warwick
University of West London
University of Westminster, London
University of York
University West of England (UWE Bristol)
University of Gloucestershire

UNITED STATES OF AMERICA

American University
Babson College
Bentley University
Berklee College of Music
Boston University
Brown University
California State University, East Bay
Carnegie Mellon University
Columbia University
Cornell University
Emerson College
Georgia Institute of Technology
Grand Valley State University
Indiana University Bloomington
Johns Hopkins University
Massachusetts Institute of Technology
Michigan State University
New York University
Northeastern University
Northwestern University
Ohio University
Otis College of Art & Design
Pennsylvania State University
Pepperdine University
Pratt Institute
Purdue University
Rhode Island School of Design
San Francisco Conservatory of Music
SCAD The Savannah College of Art and Design
SOKA University of America
Stanford University
Suffolk University
SUNY University at Buffalo
Syracuse University
The New England Conservatory of Music
The New School
Tufts University
University of California, Berkeley
University of California, Irvine
University of California, Los Angeles
University of California, Riverside
University of California, San Diego
University of California, Santa Barbara
University of California, Santa Cruz
University of Southern California
University of Illinois Urbana-Champaign
University of Maryland
University of Massachusetts Amherst
University of Michigan
University of Minnesota, Twin Cities
University of Oregon
University of Pennsylvania
University of San Francisco
University of Virginia
University of Washington
University of Wisconsin
Wellesley College
West Virginia University

THAILAND

Assumption University
British College, Sripatum University
Chiang Mai University
Chulabhorn International College of Medicine

Chulalongkorn University
Kasetsart University
King Mongkut's Institute of Technology Ladkrabang
Mahidol University
Rangsit University
Siam University
Silpakorn University
International College
Sirindhorn International Institute of Technology
Srinakharinwirot-Nottingham University
Thammasat University

AUSTRALIA

Australian National University
Australian University
Curtin University
Deakin University
Flinders
Monash University
University of Adelaide
University of Melbourne
University of Newcastle
University of New South Wales
University of Queensland
University of Sydney
University of Western Australia

JAPAN

Doshiba University
Hosei University
Keio University
Kyushu University
Nagoya University of Commerce and Business
Ritsumeikan Asia Pacific University
Sophia University
Tokyo International University (TIU)
University of Tsukuba
Waseda University

CANADA

Alberta University of the Arts
Dalhousie University
University of British Columbia
University of Saskatchewan
University of Toronto
University of Waterloo
York University

THE NETHERLANDS

Amsterdam University College
Eindhoven University of Technology
Leiden University
University of Amsterdam
University of Twente
University College Maastricht

CHINA

Donghua University
Fundan University
Ningbo Nottingham
Peking University
Shanghai Jiao Tong University
Global College
Tongji University
Tsinghua University
Zhejiang University

HONG KONG

Hong Kong Polytechnic University
Hong Kong University of Science & Technology
University of Hong Kong

MALAYSIA

Monash University Malaysia
Newcastle University Medicine Malaysia
Penang Medical School
University of Nottingham, Malaysia Campus

SOUTH KOREA

Hanyang University
Seoul National University
Sogang University
University of Utah, Asia Campus

SINGAPORE

National University of Singapore
Singapore Management University
Yale-NUS

SWITZERLAND

Ecole Hoteliere de Lausanne (EHL)
Les Roches Global Hospitality Education

FRANCE

Cours Florent
ESMOD

MALTA

Queen Mary, University of London Malta

INDIA

BIT Mesra

IRELAND

Royal College of Surgeons

ITALY

Nuova Accademia di Belle Arti Milano

POLAND

Warsaw University

TAIWAN

National Taiwan University

VIETNAM

VinUniversity

BELGIUM

Howest University of Applied Sciences

NEW ZEALAND

University of Otago

SPAIN

IE University
SHG Barcelona

DENMARK

VIA University College

GERMANY

Universitätsmedizin Neumarkt a. M. Campus Hamburg



To schedule a visit to Harrow International School Bangkok, please scan the QR code or email universityvisits@harrowschool.ac.th