

FIELDACADEMY

Powered by Educate Tomorrow

Our Community is Our Classroom



ADMISSIONS CATALOG

An Introduction to Field Academy's Unique Model

Miami Dade College | North Campus
Green Urban Living Center
Building 300
541 Kennedy Drive, Miami, FL 33167

globalfieldacademy.org
305-374-3751

TABLE OF CONTENTS

[About Field](#)

The Team

[Our Approach](#)

Who Thrives at Field

The Field Experience

Family Involvement

[Our Facilities](#)

[Our Offerings](#)

[Admissions](#)

How to Enroll

Fees

[Contact Us](#)





ABOUT FIELD ACADEMY

Field Academy enriches your independent schooling experience with holistic, student-directed, academic, and social-emotional programs at our workshop and diverse community settings in Miami.

At Field Academy, your child has a voice and can give influential input as they co-create their education. Your child has the opportunity to initiate and direct their learning. This is achieved through field- and workshop-based opportunities that are led by our learning coaches and informed by your child's needs and interests. Field Academy nurtures an inclusive, diverse community of engaged and involved parents.

Emphasizing family involvement, growth and choice, Field Academy delivers a highly-effective educational experience for children 5 - 18 years old. Our dual enrollment program provides a pathway to college, allowing middle and high school-aged students to earn college credits and work towards an Associates Degree.

Our commitment is to outcomes that develop your child as a well-rounded and multi-faceted whole person, sparking exploration, confidence and curiosity while preparing them to succeed in their future life, school or work environments.

To ensure your child's safety and well being, every staff member at Field Academy is licensed as a child care provider by the Florida Department of Children and Families.



Field Academy is an initiative of [Educate Tomorrow](#), a Miami-based nonprofit founded in 2003 that focuses on college access and success and developing strong, contributing members of our society.

TEAM

Our core team is comprised of experienced educational professionals. They serve as coaches, mentors, and advocates, and they create a productive learning environment to operate a highly beneficial program.



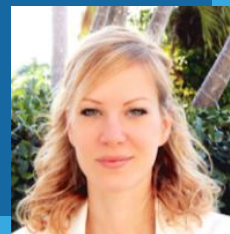
Virginia Emmons McNaught

Virginia is the Co-Founder and President of Educate Tomorrow, the Founder of The SEED School Miami, and the Founder of Field Academy.



Cecilia Palavecino Hernandez

Cecilia is Field Academy's success coach and Montessori educator for students in grades K-3.



Orienne Tairum

Orienne is the success coach for junior high school students; she teaches social studies, languages and college readiness classes. She is also the point of contact for enrollment.



Henry Cunningham

Henry is the success coach and ELA teacher for upper elementary students; he also teaches math to upper elementary and middle school students.



Paola Saralegui

Paola supports field experiences and the youngest students. She also teaches Spanish, art, and music and dance. She is in charge of data entry.



Monique Moyer

Monique directs Field Academy's Earth Lab, which combines environmental education and art. She also oversees partnerships with community organizations and she is in charge of Restorative Justice at Field Academy.



Edwidge De Jean Subirats

Judy teaches drama, geography, and is the office manager for Field Academy.



Amanda Lanway

Amanda is in charge of the food program at Field Academy. She teaches cooking classes and ensures students know how to take care of the garden.

THE FIELD ACADEMY EXPERIENCE



Field Academy is located at Miami Dade College North Campus in northern Miami Dade County. Our weekly schedule offers diverse opportunities including two **field** days (off site) and three **workshop** days (on site).

Field opportunities relate to thematic and individual goals. Examples include learning about ecosystem protection at the Frost Museum of Science or participating in the soundboard process at Miami Dade College's Film School.

Academic days enrich and integrate field days' learnings, provide activities led by success coaches, and advance students' individualized learning plans and goals. Families can then reinforce learning through their own methods at home.

WHO THRIVES AT FIELD ACADEMY

Field Academy is for families who believe in an alternative approach to the traditional learning environment and are looking for support. Our families believe in the power of a diverse community and share a mission, along with staff, of collectively and holistically developing our children. This shared responsibility creates a powerful and supportive educational experience that reaches far beyond a classroom.



FAMILY INVOLVEMENT

Student success relies on strong family involvement. We abide by the following guidelines and expectations to ensure a positive and meaningful educational experience.

VOLUNTEER



Parents are asked to contribute a minimum of two hours per child per month. There are a variety of roles and duties in which parents can participate.

COMMUNICATE



We require our families to utilize multiple communication channels to stay informed and involved.

ENGAGE



Families have multiple opportunities to participate in the development of their children and program design through parent meetings, surveys, outings and socials.

COLLABORATE



We expect parents to collaborate with their child's learning team in order to personalize each child's learning plan.

GOAL SETTING



Students are guided through a goal setting process each day. Parents will work with Field Academy's team to set their overall family goals.

COMMUNITY



We not only foster but we actively co-create a caring, engaged community of diverse families that are committed to their child's development.

OUR FACILITIES

OUR PRIMARY LOCATION:

Miami Dade College (MDC)
North Campus
Green Urban Living Center
Building 300

Students benefit from features including:

- Computer Lab
- Swimming Pool
- Cafeteria
- Montessori Room
- Garden
- Art Room
- Library

We access a variety of community facilities and locations for our Field Days.



A LA CARTE CLASSES

Field Academy students can build their own experience through our à la carte class offerings. This provides families the flexibility to supplement their at-home learning. Selecting classes that align with students' interests and learning plans promotes their success!



Our course catalog provides a variety of learning opportunities, including:

- Montessori Workshop
- Phonics Intervention for struggling and emerging learners
- Music and Dance
- Dual Enrollment Readiness
- Journalism
- Studio Art
- Garden To Table
- E(art)h Lab
- English Language Arts
- Mapping the World
- Swimming & Diving
- Math



All enrolled students can participate in:

- Student Governance and Judicial Committee
- Success Coaching

[View our schedule!](#)

ADMISSIONS

If our model sounds like a fit for your family, let's explore further.



A group of students are dissecting a shark embryo during an introduction to Miami Dade Colleges majors.

How to Enroll

- [Email](#) Orianne Tairum, our Director of Enrollment, to schedule an Informational Session. We will focus on your family's needs and how Field Academy will support your vision for your child.
- Schedule a site visit with one of our success coaches for your child to experience Field Academy firsthand.
- Finalize the enrollment paperwork and establish a tuition plan.
- Families can enroll at any time but are encouraged to do so in August, as classes have limited spots. Families will be expected to conduct an Orientation prior to their child beginning the program.
- Your child will need to be registered as a Home Schooling Student in the Miami Dade or Broward School District per State of Florida law.

PARTICIPATION FEES

Field Academy is committed to serving families from diverse socio-economic backgrounds. Our staff works hard to find grants and other sources of funding to offset costs of participation and keep our program affordable.

If you need financial support, our Director of Enrollment will work with you to find the best way to support your family, through grants and/or scholarships.



Note: Field Academy meets the IRS definition for "child care payments". Tax law may allow for families to receive a "Child and Dependent Care Credit". Please consult with your tax preparer to learn more.

FIELDACADEMY

Powered by

EDUCATE
TOMORROW

EducateTomorrow.org

Want to learn more?

1. Complete this brief [online form](#)
2. [Email](#) our Enrollment Director to schedule an Informational Session



GlobalFieldAcademy.org