



RADIATION PROTECTIVE WEAR

Contents

X-ray Protection Aprons	04
Vest & Skirt (Two-piece)	05
Double-Sided (One-piece)	08
Frontal	11
Colours & Sizing	13
Colours & Fabrics	14
Sizing Guide	16
Head & Thyroid Protection	18
Thyroid Shields	19
MindPeace & HeadPeace	20
Eye Protection	22
Back Support	27
Hip Support Belt	28
Accessories	30
Storage & Shielding	34
Storage Racks	35
Storage Cabinets	36
Mobile Shields	37
Certification & Performance	39
Contact Us	42

Key to Options



Magnetic Closure



Lightweight Core



Matrix Fabrics



Monogramming



Pockets



Buckle Closure



Trimless Edge



Anti-Reflection Coating



Prescription Lens



Attenuating Frame



Mobile / Portable



Fixed / Wall Mounted

X-ray Protection Aprons

Vest & Skirt Apron

The Vest and Skirt style is one of the most popular selections by professionals. The carefully developed design distributes weight between the shoulders and hips, reducing stress on the upper and lower back.

- Exceptional ultra-lightweight protective core
- Available in all lead equivalences
- Weight-saving manufacturing technology
- Shoulder pads and storage hooks as standard
- Professional magnetic closure technology
- Biofluid resistant and highly durable Matrix fabrics
- Standard or customised fitting
- Pair differing skirt and vest designs
- Certified to EN 61331-1:2014 & -3:2014

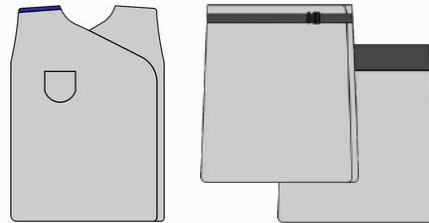
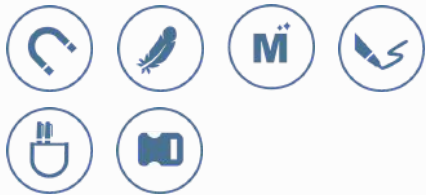
Find out about our professional magnetic closures on **Page 41**



VEST / SKIRT

MODEL V100

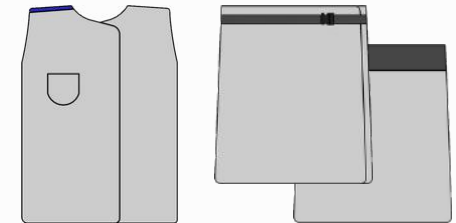
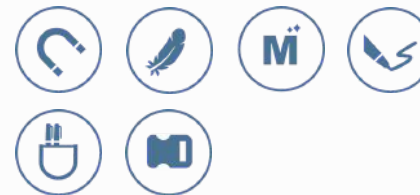
- Full front overlap
- Consistent LE coverage
- Integrated skirt support
- Comfortable for larger builds



VEST / SKIRT

MODEL V120

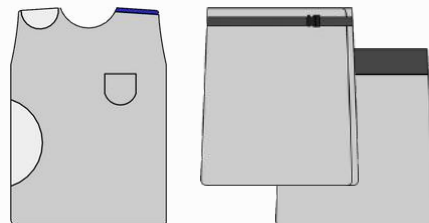
- Mid front overlap
- Consistent LE coverage
- Integrated skirt support
- Closer fit with extra shielding



VEST / SKIRT

MODEL V130

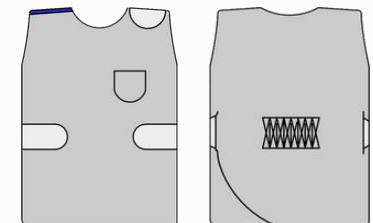
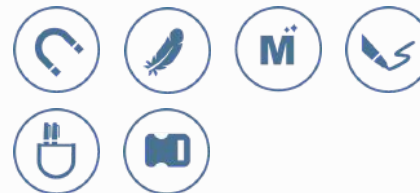
- Weight saving design
- Shoulder & side closure
- Integrated skirt support
- Elasticated back



VEST OPTION

MODEL V140

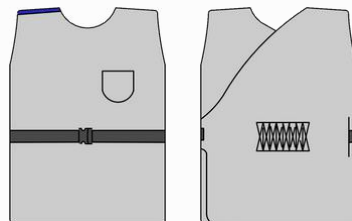
- Weight relief vest
- Ultra comfort style
- Shoulder & waist closure
- Consistent LE coverage



VEST OPTION

MODEL V145

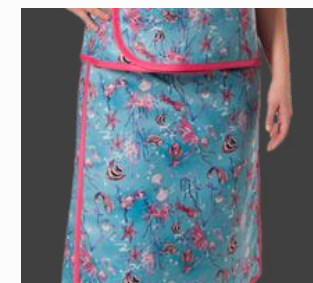
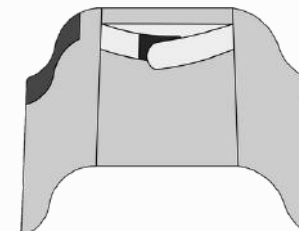
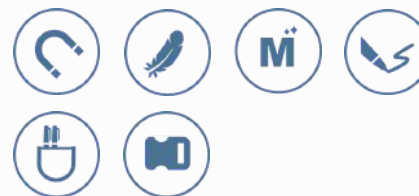
- Weight relief vest
- Waist elastic support
- Buckle closure option



SKIRT OPTION

MODEL S130

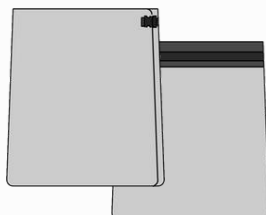
- Lower back weight relief
- Internal support belt
- Velcro or buckle closure



SKIRT OPTION

MODEL S150

- Side / Rear buckle closure
- Consistent LE coverage
- Suitable for shared garments
- Integrated elastic support



VEST / SKIRT

EXTRA OPTIONS

- X-large skirt elastic
- Rear cut-outs
- Attached thyroid shields
- X-long hanging loops
- Removable monogramming

CORE MATERIALS

SL - Standard Lead	from 3.3 kg/m2	Lead Equivalency 0.25 / 0.35 / 0.50 (mm / Pb)
LL - Bi-layer Low Lead	from 2.8 kg/m2	
BL - Bi-layer Non Lead	from 2.6 kg/m2	



Double Sided Apron

The one-piece or full wrap style apron delivers a comprehensive level of protection with unbroken shielding to the front and back. Carefully engineered overlapping distributes the weight evenly for a comfortable fit, coupled with popular back saver designs incorporating elasticated support.

- Exceptional ultra-lightweight protective core
- Available in all lead equivalences
- Weight-saving manufacturing technology
- Shoulder pads and storage hooks as standard
- Professional magnetic closure technology
- Biofluid resistant and highly durable Matrix fabrics
- Quick release tabard style
- Certified to EN 61331-1:2014 & -3:2014

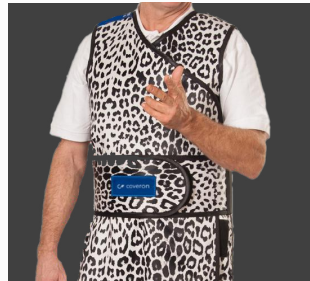
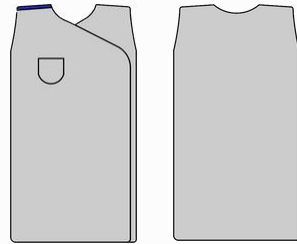
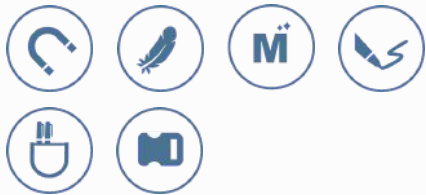
Find out about our professional magnetic closures on **Page 41**



ONE-PIECE

MODEL D220

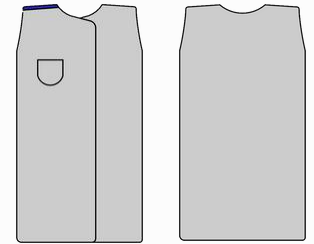
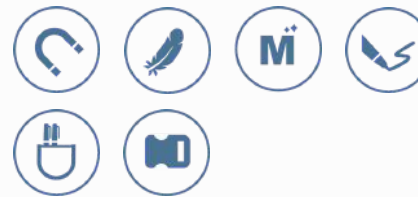
- Full front overlap
- Consistent LE coverage
- Attachable support belt
- Easy to wear



ONE-PIECE

MODEL D240

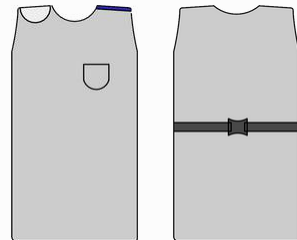
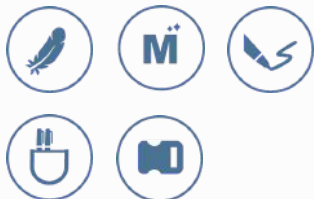
- Mid front overlap
- Consistent LE coverage
- Attachable support belt
- Easy to wear



ONE-PIECE

MODEL D250

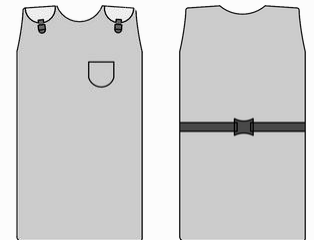
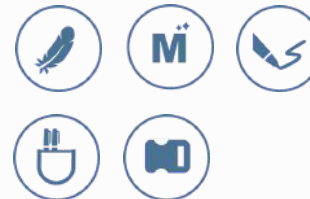
- Tabard style design
- Shoulder & rear closure
- Size adjustable
- Front & back protection



ONE-PIECE

MODEL D255

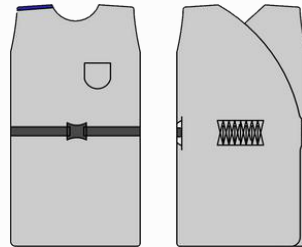
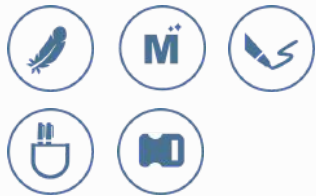
- Tabard style design
- Quick release feature
- Two shoulder closures
- Front & back protection



ONE-PIECE

MODEL D260

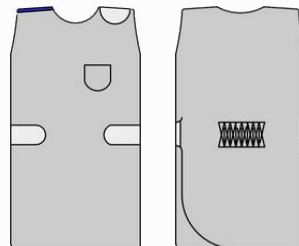
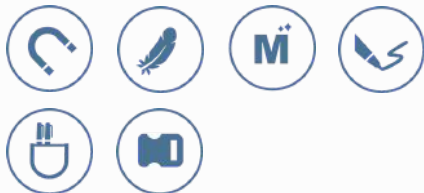
- Weight relief design
- Single point of closure
- Elasticated back support
- Front waist closure



ONE-PIECE

MODEL D265

- Weight relief design
- Elasticated back support
- Shoulder & waist closure
- Long wear-time comfort



CORE MATERIALS

SL - Standard Lead	from 3.3 kg/m2	Lead Equivalency 0.25 / 0.35 / 0.50 (mm / Pb)
LL - Bi-layer Low Lead	from 2.8 kg/m2	
BL - Bi-layer Non Lead	from 2.6 kg/m2	



Frontal Apron

Frontal aprons offer the most flexibility and weight saving in all the design styles. Developed to offer front protection only, they are easy to put on and off with their open back design, incorporating extra thick shoulder pads to maximise comfort. Available in quick release, back support and other role specific designs.

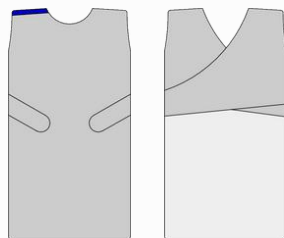
- Exceptional ultra-lightweight protective core
- Available in all lead equivalences
- High comfort shoulder pads
- Professional magnetic closure technology
- Biofluid resistant and highly durable Matrix fabrics
- Quick release designs
- Certified to EN 61331-1:2014 & -3:2014

Find out about our professional magnetic closures on **Page 41**

FRONTAL

MODEL F300

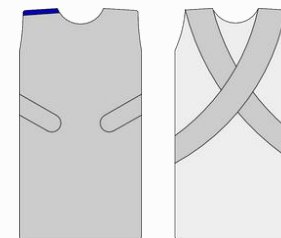
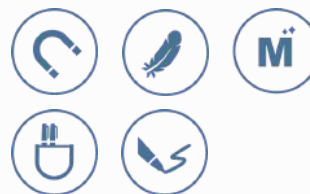
- Full frontal protection
- Back support closure
- Easy to take on / off
- Optional elasticated support



FRONTAL

MODEL F310

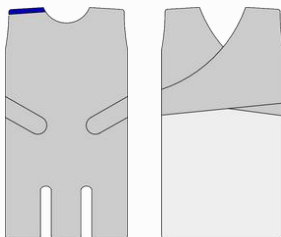
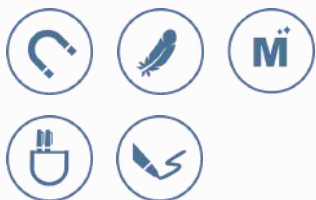
- Full frontal protection
- Comfortable shoulder pads
- Quick release design



FRONTAL

MODEL F320

- Full frontal protection
- Suitable for Urology procedures
- Comfortable leg straps
- Back support closure



CORE MATERIALS

SL - Standard Lead	from 3.3 kg/m ²	Lead Equivalency 0.25 / 0.35 / 0.50 (mm / Pb)
LL - Bi-layer Low Lead	from 2.8 kg/m ²	
BL - Bi-layer Non Lead	from 2.6 kg/m ²	

Colours & Sizing

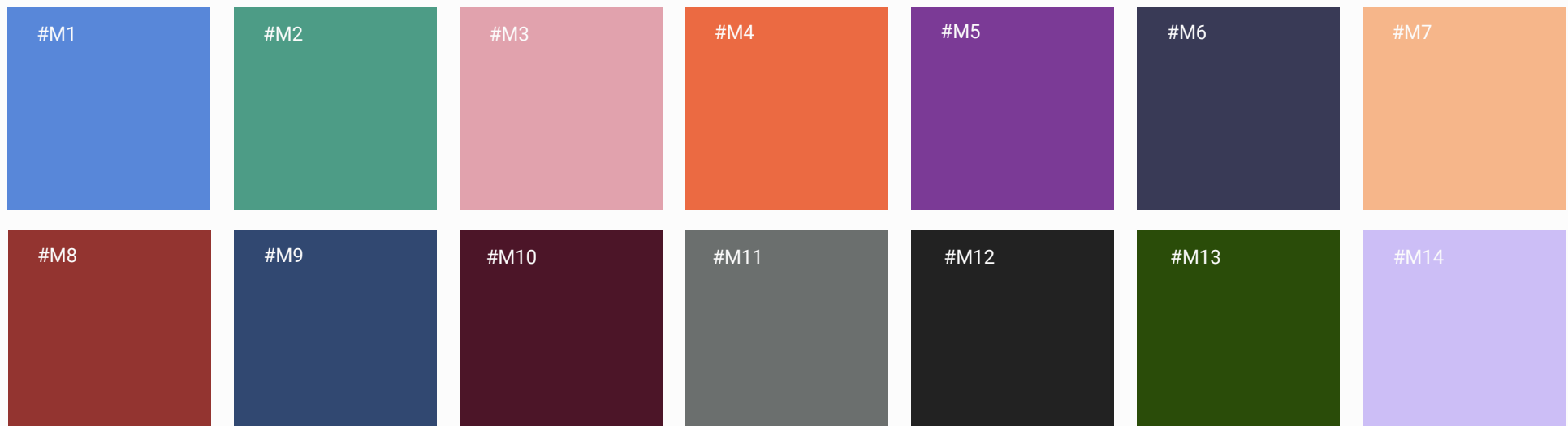
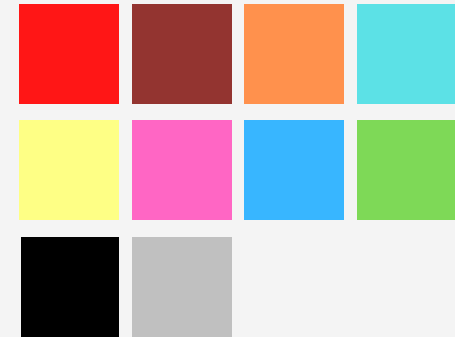
Fabrics & Colours

The high performance Matrix fabrics have an exceptional resistance to biofluids and pathogens, coupled with a special resilience to commercial grade disinfectants. Well-suited for high demand environments, the Matrix range is designed to resist absorption of fluids on the surface and deliver a hygienic solution with the added durability for deep cleans.

- Excellent resistance to active chlorine-based, iodine based & other commercial disinfectants
- Excellent resistance to body-fluids and bio-hazards
- Highly durable against bacteria & fungi
- Effective against MRSA
- Tested to ASTM F1670 & F1671
- Controls mildew and formation stains

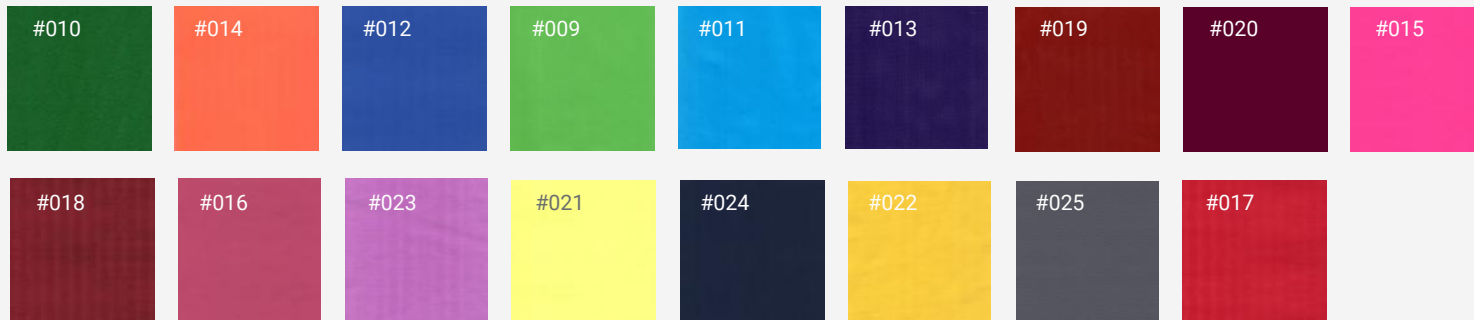
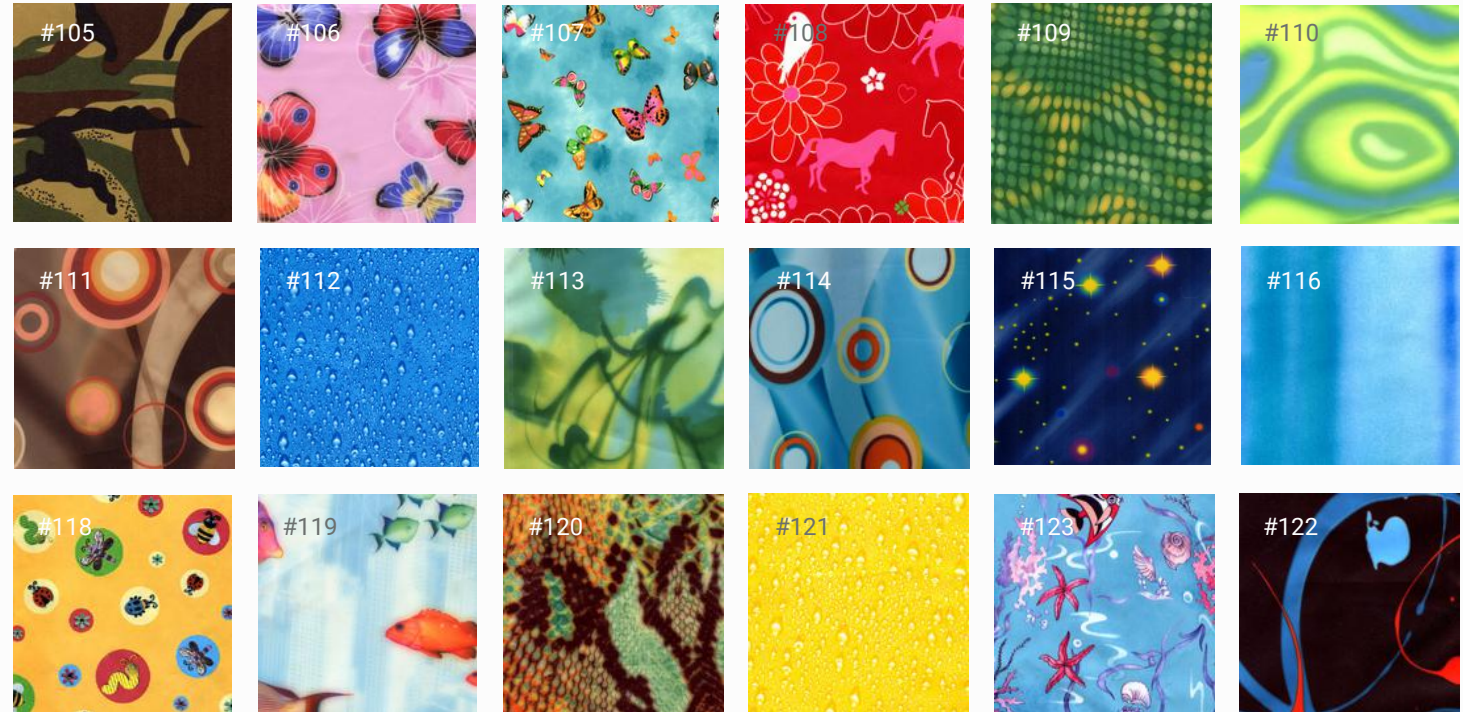
Trim Colours

Choosing a trim colour can aid quick identification and size guidance.



Patterned Fabrics

Stand out and personalise your X-ray garment with our range of patterned fabrics. Durable and long lasting, coupled with a customised trim they create many options for quick and easy identification.



Essentials Fabric Range

Designed for light-duty and lower-use environments, our range of essentials fabric colours create scope for choice and easy identification.

Sizing Guide

With the help of a friend or colleague, this quick and easy guide will help you identify the correct X-ray garment sizes you require. When taking measurements of the chest, waist and hip, it's important to keep the tape measure level but not over-tight. For garment lengths, ensure to measure over the curvature of the chest. We are here to help at any stage - just call us on 01603 273 555.

Chest Measurement

Follow the top **green** line - measure around the fullest part of the chest; beneath the armpits and in line with the nipples.

Waist Measurement

Follow the middle **green** line - measure where the skirt will be worn; above the hip bone and in line with the belly button.

Hip Measurement

Follow the lower **green** line - measure around the hips and the widest part of the buttocks.

Vest Length

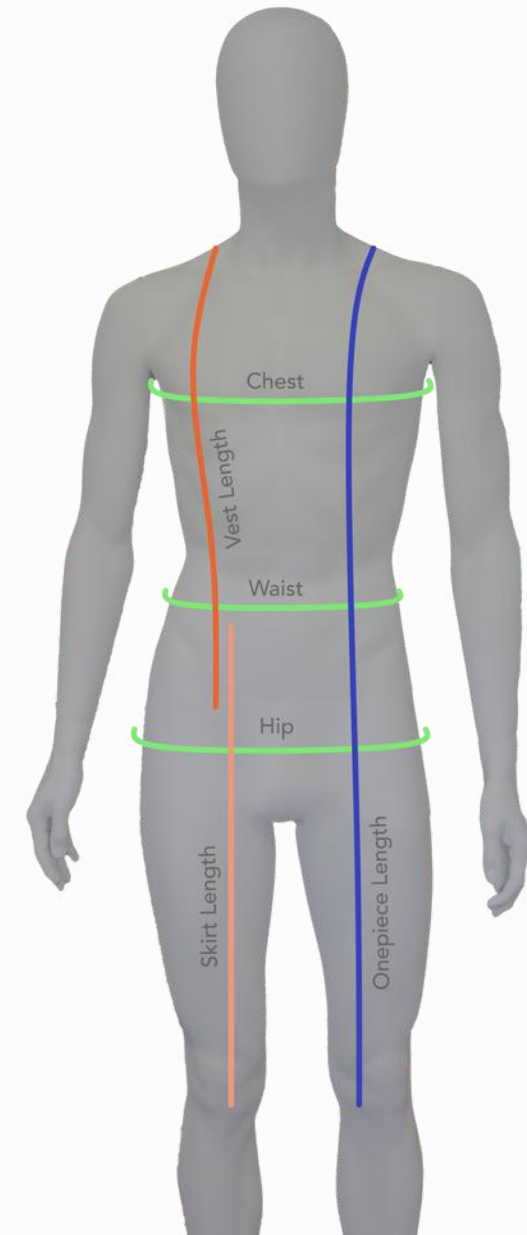
Follow the upper **orange** line - measure the vest length from the top of the shoulder and over the skirt allowing for a 10cm overlap.

Skirt Length

Follow the lower **orange** line - measure the skirt length, from your waist or normal wearing position down to just below the knee.

Onepiece Length

Follow the **blue** line - measure the from the top of the shoulder down to just below the knee, following the curvature of the chest.



SIZING GUIDE (cm)

	<i>Chest</i>	<i>Waist</i>	<i>Hip</i>	<i>Vest Length</i>	<i>Skirt Length</i>
XXS	94	84	97	50 - 70	50 - 70
XS	99	88	102	50 - 70	50 - 70
S	104	92	107	50 - 70	50 - 70
S/M	109	96	112	50 - 70	50 - 70
M	114	100	117	50 - 70	50 - 70
M/L	119	112	122	50 - 70	50 - 70
L	123	116	127	50 - 70	50 - 70
L/XL	129	118	132	50 - 70	50 - 70
XL	134	120	137	50 - 70	50 - 70

One-piece Gown

	<i>Chest</i>	<i>Hip</i>	<i>Length</i>
XXS	94	97	90 - 130
XS	99	102	90 - 130
S	104	107	90 - 130
S/M	109	112	90 - 130
M	114	117	90 - 130
M/L	119	122	90 - 130
L	123	127	90 - 130
L/XL	129	132	90 - 130
XL	134	137	90 - 130

Frontal Apron

	<i>Chest</i>	<i>Hip</i>	<i>Length</i>
S	49	50	90 - 130
SM	54	55	90 - 130
M	59	60	90 - 130
ML	64	65	90 - 130
L	69	70	90 - 130
XL	74	75	90 - 130

HEIGHT GUIDE (cm)

Height	Vest Length	Height	Skirt Length
<159	50	<150	50
160 - 165	55	150 - 155	55
165 - 175	60	155 - 160	60
175 - 180	63	160 - 170	65
180 - 185	65	170 - 180	70
185 - 190	66	180 - 190	75
190 - 195	68	190 - 200	80
195 - 200	70		

One-piece Gown & Frontal Apron

Height	<i>Length</i>
150 - 160	90
160 - 170	100
170 - 180	110
180 - 190	120
190 - 200	130

**XXL+ and made-to-measure
sizing available on all styles.**

Need help?

Call 01603 273 555 and we'll support you by phone, video or in person.

Head & Thyroid Protection

Thyroid Shields

The thyroid shield delivers on one of the most important areas in X-ray safety. Manufactured in different designs, they are available as separate, attached or removable, and a trimless option significantly removes skin irritation during wear.

The HeadPeace and MindPeace shields provide an extended level of protection to the head and brain. Utilising a modern woven material construction, they protect an area of increasing concern whilst remaining unrivalled in comfort.

- Multiple designs and styles
- Magnetic closure options
- Weight saving cores
- Trimless designs
- Highly durable Matrix fabrics
- Certified to EN 61331-1:2014 & -3:2014

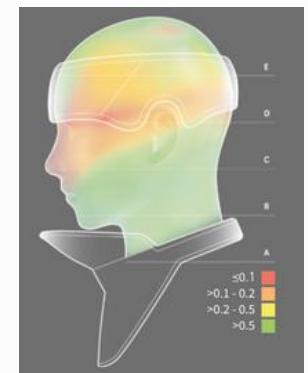
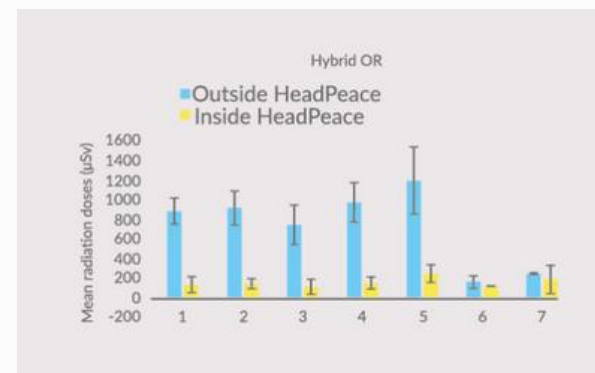




MindPeace & HeadPeace

The inevitable factor of fluoroscopy-guided interventions is the risk of head and brain exposure to radiation. Combining critical thyroid protection and head protection, the MindPeace offers a first in shielding the brain through its patented collar and exclusive comfortable woven construction. Coupled with the HeadPeace, the system delivers 74% more protection than conventional shields.

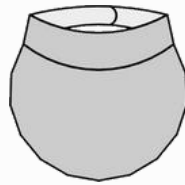
- Up to 96.7% attenuation during fluoroscopy interventions
- 30x more durable than equivalents
- Proven in clinical environments
- Adjustable fit with 3-step magnetic fastening
- Comfortable and pliable, soft woven textile design



THYROID SHIELD

D-TYPE

- Improved thyroid protection
- Increased sternum cover
- Comfortable & fitted
- Size range available



THYROID SHIELD

CTS

- Popular thyroid cover
- Compact style
- Magnetic & trimless options
- Size range available



THYROID SHIELD

MINDPEACE

- Advanced thyroid protection
- Incorporated head protection
- Woven textile technology
- Highly durable & flexible



HEAD SHIELD

HEADPEACE

- Head & brain shielding
- Comfortable fit & style
- Breathable textile construction
- Highly durable & flexible



Eye Protection





X-ray Glasses

Shielding an open and highly sensitive organ, our X-ray glasses deliver an exclusive four-dimensional protection to the eye, not available elsewhere. Incorporating new technologies, the frame has attenuating properties and provides a 0.50 mm/Pb protection to the top, bottom and sides of the eye, as well as the front lens.

Coupled with leading design engineering, adjustable frame components create a personalised and comfortable fit. Also available as a large framed fit-over option.

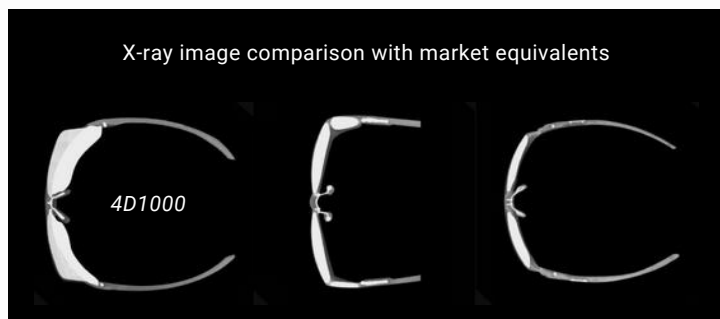
- Most complete all-round protection to the eye
- Adjustable nose-piece & hinges
- Prescription lenses up to and beyond +/- 10 diopter
- Lens replacement for prescription changes
- Lens equivalences of 0.50 or 0.75 mm/Pb
- Frame equivalence of 0.50 mm/Pb
- Available in a range of stylish colours
- Optional monogramming & Anti-reflection



Regular change of prescription?

Update your prescription and keep your frames with our lens replacement service;
Call 01603 273 555

X-ray image comparison with market equivalents



4D1000

Adjustable
Nose-piece



Monogramming

Attenuating
Frame

4D1100 (Fit-over)



Unique optical
frame connection

Large Lenses

Ventilation

Adjustable Arms

4D2000

Sports-wrap Style

Attenuating
Frame



GLASSES

4D1000

- Attenuating frame
- Prescription lens option
- Advanced side shielding
- Adjustable nose-piece



GLASSES

4D2000

- Sports wrap style
- Prescription lens option
- Attenuating frame
- Adjustable arms for superior fit



FIT-OVER GLASSES

4D1100

- Fit-over design
- Accommodates large frames
- Attenuating frame
- Durable head-strap



Back Support



Hip Support Belt

Maintaining good occupational health is a top priority in every X-ray environment. Reducing back stress by using support belts is an effective way to reduce fatigue and pain, with the new Hip Support Belt delivering a completely new approach.

The new Hip Support Belt improves posture and reduces back strain through its direct pressure onto the hip and pelvic skeletal structure. This product is one to be experienced - give us a call on +44 (0)1603 273 555 to arrange a visit.

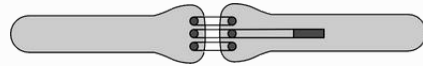
- Remove consequential waist support belt problems
- Adjustable pulley for maximum support
- No frictional resistance
- Worn around and with direct pressure onto the hip
- Move freely while keeping an upward and healthy posture
- Wear underneath or on top of X-ray leads



BACK SUPPORT

HP400

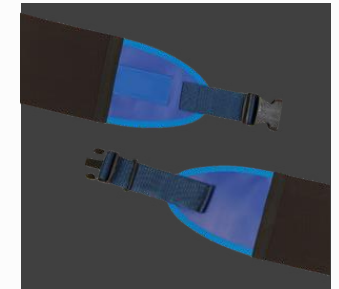
- Increasingly popular design
- Effective posture support
- Two sizes available
- No frictional resistance



BACK SUPPORT

BSB20

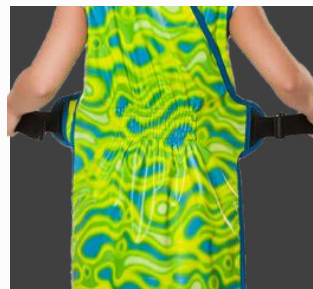
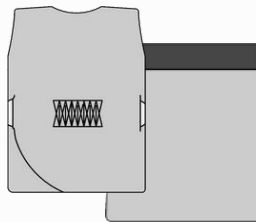
- Waist band support
- Velcro / Buckle closure
- Monogramming available
- Choice of colours (page 14/15)



BACK SUPPORT

INTEGRATED SUPPORT

- Integrated vest back support
- Integrated skirt back support
- Durable & high quality elastics
- Choice of elastic widths



Accessories

Accessories

Completing your X-ray protection is made possible with our extensive range of supporting accessories. From shielding limbs to cleaning X-ray leads, the finer details complete the protective scope, keeping your safety and wellbeing foremost in your occupation.

- Surgical gloves and hand protection
- Limb & Gonad protection
- Glasses storage & cleaning
- Glasses components replacements
- Lens replacements
- X-ray leads cleaning



ACCESSORIES

SURGICAL GLOVES

- Attenuating properties
- High dexterity
- Sterile & disposable



ACCESSORIES

X-RAY MITTENS

- X-ray protection
- Full hand coverage
- High levels of protection



ACCESSORIES

ARM PROTECTORS

- Enhanced arm protection
- Comfortable & removable
- Compatible with most lead styles



ACCESSORIES

LEG PROTECTORS

- Advanced leg protection
- Fitted & comfortable
- Lightweight protective cores



ACCESSORIES

REPLACEMENT LENSES

- Replace prescription lenses
- Single, Bi-focal or Progressive
- Anti-reflection coatings



ACCESSORIES

GLASSES CASE

- Rigid case
- Foam padded interior
- Secure zip closure



ACCESSORIES

GLASSES STRAPS

- Adjustable straps
- Durable tightening mechanism



ACCESSORIES

ANTI-FOG SPRAY

- Reduce lens fogging
- Re-apply solution
- Free bottle with new frames



ACCESSORIES

APRON CLEANER

- Surface active biocidal cleaner
- Can be used universally
- Available in 500ml bottles



ACCESSORIES

OTHER ACCESSORIES

- Garment repairs
- Component replacements
- Gonad protection
- Shoulder protectors



Storage & Shielding

Storage Racks

Good storage of X-ray assets is fundamental to their longevity and performance. Our range of fixed & mobile racks provide a sturdy and reliable means to organise X-ray leads across the different needs of different departments. A range of hanger capacities and optional secure lockable storage (page 36) deliver solutions that work in any radiation risk environment.

- Swivel arm or removable hanger
- Fixed wall mounted racks
- Mobile storage racks
- Sturdy metal frames & construction
- Skirt hooks for easy storage



Lockable Storage Cabinets

The safe-keeping of X-ray assets is no less important than wearing them. Increasing garment longevity and performance, and ensuring your assets remain in the rightful department, reduces unplanned budget spend. The S200 mobile cabinet is the leading option to meet the demands of secure storage.

- Stores up to 10 aprons per unit
- Durable, double wheel castors
- Discreet and secure Digi-lock on door
- Advanced ventilation
- Transparent roof for maximum internal light
- Sturdy design with easy clean surfaces



Mobile Shields

Mobile shields provide an effective means of shielding for further enhancing current levels of protection, or, alternatively limiting the need for personal protective equipment with clinicians retaining visibility through X-ray safe glazing.

Adjustable curtain shields are also a compact and easy way to improve personal X-ray protection, especially to clinicians during long procedures with high-dose fluoroscopy environments.

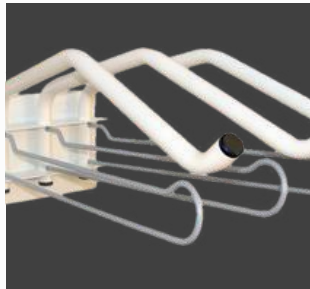
- Extensive range of sizes, including adjustable heights
- Braked castor wheels for mobility
- Wide-format X-ray vision panels
- Hygienic and easy clean surfaces



STORAGE

SWIVEL HANGER RACK

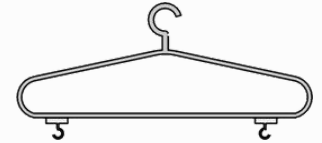
- Wall mounted or mobile frames
- Swivel hangers for improved access
- Large and sturdy hanger designs
- Multiple storage capacities



STORAGE

REMOVABLE HANGER RACK

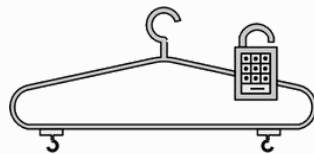
- Mobile with braked castors
- Easy access & removable hangers
- Multiple storage capacities
- Light & heavy duty frames



STORAGE

SECURE STORAGE CABINET

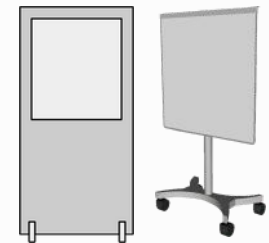
- Lockable & enclosed storage solution
- Advanced ventilation
- Discreet secure Digi-lock
- Durable double wheel castors



SHIELDING

MOBILE SHIELDING

- Fixed & adjustable designs
- Wide-format glazing
- Range of lead equivalencies
- Mobile & durable



Certification & Performance

Certification & Performance

The quality and performance of your radiation protective wear is governed by industry recognised standards. At Coveron we ensure your X-ray garments meet all the current relevant levels of certification, giving you peace of mind and assurance through recognised testing and compliance.

- Meets all international norms
- Bi-layer systems for advanced weight savings
- Homogenous layer of each core material
- Certificates & performance tables available on request

	Standard Lead	Bi-layer Low-lead	Bi-layer Non-lead
Weight from:	3.3 kg / m2	2.8 kg / m2	2.6 kg / m2
Performance:	50 - 150 kV	50 - 150 kV	50 - 150 kV
Lead equivalence:	0.25 / 0.35 / 0.50 mm / Pb	0.25 / 0.35 / 0.50 mm / Pb	0.25 / 0.35 / 0.50 mm / Pb

Tested & compliant to;

EN 61331-1:2014

EN 61331-3:2014

EN ISO 9001:2015

EN ISO 13485:2016

Magnetic Closures

Magnetic closures bring a new and revolutionary technology to X-ray protective wear. The exclusive fastening style on the Coveron range of lead coats, vests and skirts bring significant hygiene, longevity and ergonomic benefits.

- Hygienic - clean straight over the closure, no dirt or bacteria trap
- Longevity - consistent & reliable magnetic performance
- Magnetic field - a magnetic field of just 10mm makes it safe for many clinical environments
- Ergonomics - improved wearer experience and good wearer habits

Matrix Fabrics

Matrix fabrics have undergone extensive testing to provide a clinically hygienic and reliable surface that lives up to the demands of most bacteria-risk environments. Highly effective, and proven resilience against biofluids and pathogens, it also owns the the performance of a durable surface against commercial chemical grade disinfectants such as;

- Alcohol based (Iodine)
- Phenol based
- Quaternary ammonium based
- Active chlorine based (>100 x 5000 ppm - always rinse extensive with pure water)
- Chloramine based
- Peroxyde based



Contact Us

Call +44 (0)1603 273 555

Email info@coveron.co.uk

Web www.coveron.co.uk

Belmore Place
Norwich
NR13 6PX

