

# 2025 PORTAGE LA PRAIRIE *City Guide*

JULY TO  
DECEMBER



**City Adopts  
New Automated Waste Collection System**

**Prairie Flow Trails:  
A New Outdoor Destination**

**Garrioch Creek Trail  
to Receive New Trailhead**

**Portage** *la* **Prairie**  
*City of Possibilities*



# TABLE OF Contents

## MESSAGES

- 3 Message from Mayor Sharilyn Knox

## FEATURES

- 20-21 Garrioch Creek Trail to Receive New Trailhead  
22-23 Prairie Flow Trails  
24-25 Renewed McKay Avenue Park

## CITY NEWS AND MORE

- 4 City Facility Hours  
5 City Council List  
6-7 Taxes and Utility Rates  
8 Hello Summer  
9 Summer 2025 Live Music  
10 Top Bylaw Complaints  
11 Street Smarts: Know the Rules Before You Park  
12-13 Operations & Utility  
14 City Adopts New Automated Waste Collection System  
15-17 Solid Waste Automated Collection FAQ  
18-19 Solid Waste and Recyclables Collection Schedule  
21 Save the Date: Prairie Unity Competition Pow Wow  
26-27 Active Transportation Tips  
28 The 9PM Routine  
29 Portage Regional Recreation Authority (PRRA)  
30 Portage la Prairie Regional Landfill  
31 2025 Water Main Flushing Program  
32-33 Strategic Plan: Top 5 Initiatives  
34 Portage Regional Economic Development (PRED)  
35 Portage la Prairie Regional Library  
36 Events Around Town

## ON THE COVER

Portage la Prairie's new solid waste contract truck.



Published for the  
**CITY OF PORTAGE LA PRAIRIE**  
97 Saskatchewan Avenue E.  
Portage la Prairie, MB R1N 0L8  
204-239-8309

[www.city-plap.com](http://www.city-plap.com)  
Facebook: [www.facebook.com/cityplap/](https://www.facebook.com/cityplap/)  
Twitter: [x.com/CityofPortage](https://x.com/CityofPortage)  
Instagram: [www.instagram.com/cityofportagelaprairie](https://www.instagram.com/cityofportagelaprairie)

Published by  
**DEL COMMUNICATIONS INC.**  
Suite 300, 6 Roslyn Road, Winnipeg, MB R3L 0G5  
204-254-6418  
[www.delcommunications.com](http://www.delcommunications.com)

President and CEO  
**DAVID LANGSTAFF**

Editor  
**LISA KOPOCHINSKI**  
431-277-6261  
[Lisakop@sbcglobal.net](mailto:Lisakop@sbcglobal.net)  
[www.LisaKCommunications.net](http://www.LisaKCommunications.net)

Production services provided by:  
**Raven Creative Design**

Layout & Design  
**KIM LACEY**

©DEL Communications Inc. – All rights reserved.  
Contents may not be reproduced by any means, in whole or in part, without the prior written permission of the publisher.

Publications mail agreement #40934510  
Return undeliverable address to:  
DEL Communications Inc.  
Suite 300, 6 Roslyn Road, Winnipeg, MB R3L 0G5

While every effort has been made to ensure the accuracy of the information contained herein and the reliability of the source, the publisher in no way guarantees nor warrants the information and is not responsible for errors, omissions or statements made by advertisers. Opinions and recommendations made by contributors or advertisers are not necessarily those of the publisher, its directors, officers or employees.

PRINTED IN CANADA 07/2025



## MESSAGE FROM Mayor Sharilyn Knox

Dear Residents of Portage la Prairie,

Summer in Portage la Prairie has a rhythm all its own. The days get warmer, the pace picks up, and everywhere you look, there's something happening.

Whether it's kids riding bikes, families gathering in the park, or friends catching up at a local patio, you can feel the energy of the season in every corner of our city.

Crescent Lake becomes a backdrop for morning walks, evening kayaks, and quiet moments to pause and take it all in. Our trails and green spaces fill with people making the most of the long days, and community events bring us together in the best way—through shared experiences, laughter, and connection.

But behind all those summer moments is a whole lot of work. Our city crews are out maintaining roads, planting flowers, trimming trees, and keeping things running smoothly. Construction projects are in full swing, and while they may slow traffic here and there, they're laying the groundwork for improvements that will serve us well into the future.

We don't just build for today—we build for the people we may never meet. Every trail, garden, and gathering space is part of the legacy we leave behind.

Our local organizations, volunteers, and event planners are putting in countless hours to make summer festivals, kids' programs, and community events happen. Their behind-the-scenes dedication is what makes so many of our favourite traditions possible. I want to thank each person who contributes their time, talent, or resources to make Portage a more connected and welcoming place.

There's also something about summer that brings out our sense of community pride. Whether you're cheering on a local team, shopping at the farmers market, or helping a neighbour with yard work, every small act adds to the

spirit of this place. When we show up for one another, it makes our city stronger.

We're lucky to live in a place where you can find community in a conversation at the dog park, a game of catch at the playground, or a quiet visit to the library.

**"We don't just build for today—  
we build for the people we may  
never meet."**

These everyday connections matter—and they're what make Portage feel like home.

So, as we move through the heart of summer, I hope you'll take time to enjoy it. Explore a new trail, volunteer at an event, support a local business, or simply say hello to someone new. It all makes a difference.

I wish you a safe and memorable summer in Portage la Prairie..

**—Mayor Sharilyn Knox**



# CITY FACILITY HOURS

City Hall is open to the public from Monday to Friday between the hours of 9:00 a.m. - 4:30 p.m., excluding statutory holidays. Entering and exiting City Hall is through the east front doors.

The Operations Department is open to the public, but it is encouraged to call ahead at (204) 239-8346. They are closed between 12:00 p.m.-1:00 p.m.

The Fire Department is always accessible to the public in the event of an emergency. However, if your inquiry is of a general nature, please contact them by telephone at (204) 239-8340 or email at [firehall@city-plap.com](mailto:firehall@city-plap.com). Office hours for general inquiries are Monday to Friday between the hours of 8:30 a.m.-12:00 noon and 1:00 p.m. - 4:30 p.m. The general office is closed between 12:00 p.m.- 1:00 p.m.

For all other inquiries, please call the general line at (204) 239-8309 or visit the City's website.

## UPCOMING OFFICE CLOSURES

July 1 – Canada Day

August 4 – Terry Fox Day

September 1 – Labour Day

September 30 – National Day of Truth and Reconciliation

October 13 – Thanksgiving Day

November 11 – Remembrance Day

December 25 – Christmas Day

December 26 – Boxing Day

## CONTACT INFORMATION

[www.city-plap.com](http://www.city-plap.com)

Facebook: [www.facebook.com/cityplap/](https://www.facebook.com/cityplap/)

Twitter: [x.com/CityofPortage](https://twitter.com/CityofPortage)

Instagram: [www.instagram.com/cityofportagelaprairie/](https://www.instagram.com/cityofportagelaprairie/)

### CITY HALL

97 Saskatchewan Avenue East

Portage la Prairie, MB R1N 0L8

T: 204-239-8309 • F: 204-239-1532

Monday to Friday: 9:00 a.m. - 4:30 p.m.

After-hours emergency: 204-239-8340

Email: [info@city-plap.com](mailto:info@city-plap.com)

Operations Department: 204-239-8346

Water On/Off & Invoices: 204-239-8370

Property Tax Clerk: 204-239-8308

Animal Control/Bylaw Enforcement:  
204-239-8326

Planning District: 204-239-8345

RCMP: 204-857-4445

EMERGENCY: 9-1-1

### YOUTH MEMBER OF COUNCIL

City Council sees value in having a Youth Member of Council in order to build interest and knowledge of municipal government in today's youth. A youth member will be selected at the beginning of each school year and will remain until the last meeting of the Council in the following August.

For more information on the Youth Member of Council position contact the Manager of Administration at (204) 239-8337 or [info@city-plap.com](mailto:info@city-plap.com).

### 2025 SCHEDULE OF COUNCIL MEETINGS

Monday, July 14

Monday, August 11

Wednesday, September 10

Monday, September 22

Tuesday, October 14

Monday, October 27

Monday, November 10

Monday, December 8

Council and Committee meetings are held at City Hall Council Chambers unless advertised otherwise and are open to the public. Meetings can also be live-streamed or watched after the fact on the City of Portage la Prairie YouTube channel. Meetings are scheduled for 6:00pm unless posted otherwise.

Council meetings can also be watched on cable television, check your channel guide for the Rogers community channel.

Mayor Sharilyn Knox provides a video recap of Council meetings the morning after each meeting, which can be viewed on the City's Facebook page.

### DELEGATIONS TO COUNCIL

Persons wishing to present information to or make a request to City Council may do so by appearing as a delegation. To register as a delegation, please fill out the registration form and submit it no later than the Wednesday prior to Council to the Manager of Administration.

Delegation registration forms can be submitted online, in person at City Hall or via email to [info@city-plap.com](mailto:info@city-plap.com).

Link: <https://forms.city-plap.com/Register-as-a-Delegation>

### INVITATIONS TO COUNCIL

Each year, the Mayor and members of City Council attend many special events, ceremonies, and celebrations throughout the City.

If you would like to invite the Mayor or Council to an event, please submit using the online request form.

Link: <https://forms.city-plap.com/Invitation-to-Council>



# CITY COUNCIL



**MAYOR SHARILYN KNOX** [sknox@city-plap.com](mailto:sknox@city-plap.com)

*"There is real momentum—fueled by resilience, growth, and strong partnerships. I'm grateful to those who keep us moving forward and encourage everyone to stay engaged as we shape the future together."*

**Chairperson:** Portage Regional Recreation Authority. **Member:** Finance, Legislative & Property Committee, City Planning & Economic Development Committee, Public Safety Committee, Waterworks Committee, Transportation Committee, Community Services Committee. **Representative:** Budget Committee, City Manager's Evaluation, Emergency Control Group, Tax Sharing Committee, Queen Elizabeth Scholarship Committee, RCMP Community Consultative Committee.



**COUNCILLOR COLIN DOYLE** [cdoyle@city-plap.com](mailto:cdoyle@city-plap.com)

*"What I love about public safety is that it is a topic that is always top of mind, so I always get to have engaging conversations with our community."*

**Chairperson:** Public Safety Committee. **Second:** Community Services Committee. **Director:** Portage Regional Recreation Authority, Portage Regional Economic Development. **Representative:** Budget Committee, City Manager's Evaluation, Emergency Control Group, Tax Sharing Committee, RCMP Community Consultative Committee.



**COUNCILLOR RYAN ESPEY** [respey@city-plap.com](mailto:respey@city-plap.com)

*"I believe that the Community Services Committee plays a vital role in enhancing the well-being and quality of life for residents through its initiatives and support systems."*

**Chairperson:** Community Services Committee. **Second:** Transportation Committee. **Director:** Portage la Prairie Planning District Board, Portage Regional Landfill Authority. **Representative:** Budget Committee, City Manager's Evaluation, Emergency Control Group, Board of Revision, Tax Sharing Committee, Parks Committee.



**COUNCILLOR JOE MASI** [jmasi@city-plap.com](mailto:jmasi@city-plap.com)

*"I enjoy being Chair of Finance because it provides me with a great overall insight into the financial health and issues facing the City of Portage la Prairie."*

**Chairperson:** Finance, Legislative & Property Committee. **Second:** Public Safety. **Director:** Portage la Prairie Planning District, Regional Library Board, Portage Regional Healthcare Foundation. **Representative:** Budget Committee, City Manager's Evaluation, Emergency Control Group, Tax Sharing Committee, Chamber of Commerce, Community Economic Development Initiative.



**COUNCILLOR PRESTON MEIER** [pmeier@city-plap.com](mailto:pmeier@city-plap.com)

*"I enjoy doing my part in making economic development a primary focus for our city, in order to create a diverse, inclusive, welcoming community with opportunities for all."*

**Chairperson:** City Planning & Economic Development Committee, Board of Revision. **Second:** Finance, Legislative & Property Committee. **Director:** Regional Landfill Authority, Portage Regional Economic Development. **Representative:** Budget Committee, City Manager's Evaluation, Emergency Control Group, Tax Sharing Committee, Board of Revision, Portage Urban Indigenous People's Coalition, Public Art Committee.



**COUNCILLOR FARON NICHOLLS** [fnicholls@city-plap.com](mailto:fnicholls@city-plap.com)

*"Waterworks provides our city/area with both residential and industrial water and water pollution control services. I am very proud to serve and support our committed staff within my portfolio."*

**Chairperson:** Waterworks Committee. **Second:** City Planning & Economic Development Committee. **Director:** Portage Regional Recreation Authority, Portage Regional Economic Development. **Representative:** Budget Committee, City Manager's Evaluation, Emergency Control Group, Tax Sharing Committee, Heartland Community Futures, Fort la Reine Museum.



**COUNCILLOR TERRIE PORTER** [tporter@city-plap.com](mailto:tporter@city-plap.com)

*"My favourite part of being the Chair of Transportation is that when a plan comes together, I see firsthand all the different components simultaneously working together to create a community that will reap the benefits and foster community pride for years to come."*

**Chairperson:** Transportation Committee. **Second:** Waterworks Committee. **Director:** Portage la Prairie Planning District Board, Portage Regional Landfill Authority. **Representative:** Budget Committee, City Manager's Evaluation, Emergency Control Group, Board of Revision, Tax Sharing Committee, Heritage Advisory Committee.

# Taxes and utility rates



## 2025 UTILITY RATE CHANGE - WATER & SEWER

The Public Utilities Board granted the City of Portage la Prairie approval for revised rates effective January 1, 2025. The revised rates are:

Cubic Meters Per Quarter	Water	Wastewater
Domestic, up to 227 CM	\$2.64	\$1.76
Intermediate, 228 CM to 2,273 CM	\$2.19	\$1.76
Wholesale, 2,274 CM to 18,184 CM	\$2.07	\$1.33
Variable, over 18,184 CM	\$.89	\$1.33
Quarterly Service Charge \$22.69		

## 2025 PROPERTY TAXES

2025 Property Tax Statements were mailed out in June. If you do not receive a copy of your Property Tax Statement, please contact us at (204) 239-8308. Taxes are due by 4:30 pm on July 31, 2025. For any changes to your mailing address or phone number, please contact City Hall.

## HOW TO PAY TAX OR UTILITY BILLS

To avoid waiting in line, we offer a variety of payment options.

Please note electronic payments take 3 to 5 days to process. To avoid penalty, allow sufficient time for your payment to be received by the City on or before the due date. Penalties will be applied to current year taxes beginning on August 1, 2025, at a rate of 1.25% per month.

- Online Banking: set up through your financial institution, allow 3 to 5 days to process.
- Mail: cheque or money order made payable to City of Portage la Prairie, 97 Saskatchewan Avenue East, Portage la Prairie, MB, R1N 0L8. Cheques and money orders must be received at City Hall by 4:30 p.m. on the due date.

- Post-Dated Cheque: cheque must be dated and received at City Hall by 4:30 p.m. on the due date.
- After Hours: a night deposit box is located on the east front door of City Hall.
- E-Transfer: send to [payments@city-plap.com](mailto:payments@city-plap.com). Include the roll number in the message field.
- Telpay: [www.telpay.ca](http://www.telpay.ca)
- Credit Card: online only through Pay Simply at [www.paysimply.ca](http://www.paysimply.ca). Fees of 2.5% apply, allow 3 to 5 days to process.
- In Person: at City Hall Monday to Friday between 9:00 a.m. and 4:30 p.m.
- TIPP: Properties set up on the preauthorized payment program will continue to have payments withdrawn monthly as scheduled.
- Prepayment: Taxes may be prepaid up to 90% of the previous year's net tax levy. Payments made prior to June 30, 2025 may be eligible for a discount.

## TAX INSTALLMENT PAYMENT PLAN - T.I.P.P.

Pay your 2026 property taxes in 12 easy monthly installments on the 15th of each month beginning January 15th, 2026.

You can join TIPP if:

- Your tax account is not in arrears.
- You have chequing privileges at a financial institution (bank, trust company, treasury branch or credit union)
- Your taxes are not presently paid through a mortgage company (P.I.T.).
- Your application is received prior to December 15, or the application is received prior to June 30, 2026 with an initial payment of the missed installments paid at the time of application.

The TIPP application can be found on the City's Website, visit City Hall, or call (204) 239-8308 for more information.

# Pre-Authorized Payment Options for Taxes & Utilities

The City of Portage la Prairie offers three convenient payment programs to help you stay on track with your utility and property tax bills. There are no added fees from the City, you will still receive your regular bill, and you may cancel or update at any time with 30 days' notice.

**TO ENROLL:** Fill out an application, attach a void cheque, and submit it to City Hall. Your account must be in good standing with no recent NSF cheques. Application forms are available online or at City Hall.

## 1. UTILITY BILLS - PRE-AUTHORIZED PAYMENT PLAN

With this plan, your utility bill is automatically withdrawn from your bank account every quarter on the due date.

Questions? Call **204-239-8370**  
or email [utilityclerk@city-plap.com](mailto:utilityclerk@city-plap.com)

## 2. UTILITY BUDGET PLAN

With this plan, your utility costs are spread evenly over the year based on your previous usage. These accounts are reconciled annually, and payments amounts adjusted if needed.

Questions? Call **204-239-8370**  
or email [utilityclerk@city-plap.com](mailto:utilityclerk@city-plap.com)

## 3. PROPERTY TAXES - TAX INSTALLMENT PAYMENT PLAN (TIPP)

This program lets you pay your annual property taxes through monthly automatic withdrawals.

Apply by **December 15** to start in January. You can also join later (up to June 30) with an initial payment for missed installments. Complete the TIPP application on the City Website at <https://forms.city-plap.com/Tax-Installment-Payment-Plan> or visit City Hall.

Questions? Call **204-239-8308**  
or email [taxclerk@city-plap.com](mailto:taxclerk@city-plap.com)

## BUSINESS LICENSE

Anyone operating a business—whether ongoing, occasional, or one-time—must obtain a business license from the City of Portage la Prairie. However, businesses operating from a commercially taxed property within the city are exempt from this requirement.

For details, visit [www.city-plap.com](http://www.city-plap.com)  
or call 204-239-8310.



## GARAGE/YARD SALES

A permit is not required to host a garage/yard sale, but signage placement is regulated by Zoning By-Law 21-8724 Section 8.15.1. Signs cannot be placed on boulevards along Saskatchewan Avenue or any other street. Non-compliant signs may be removed by Bylaw Enforcement.

Fines apply if signs aren't taken down within 24 hours after your sale (\$20 per sign). Additionally, exceeding two sales per year or extending a sale beyond three days can result in a \$100 fine.

For full details, check the bylaw  
or visit [www.city-plap.com](http://www.city-plap.com).



# HELLO Summer

Portage la Prairie is buzzing with activity all summer long! Hit the Portage Ex Fair July 4–6, or learn about Manitoba's raptors on July 8. Explore Prairie Flow Trails, cool off at Splash Island, catch a Wednesday matinee at Prairie City Cinema, or skate for free at Stride Place. With events like the Folklorama Tour (Aug 8) and a Hip Hop Dance Workshop (Aug 12–13), plus ongoing fun at Simplot Central Park, the Portage Library, Southport Bowl, and more—there's something for everyone!



- July 1 – Canada Day Celebrations, [www.strideplace.ca](http://www.strideplace.ca)
- July 4, 5 & 6 – Portage Ex Fair, [www.portageex.com](http://www.portageex.com)
- July 8 – Raptors of Manitoba: Nature's Winged Predators, [www.fortlareinemuseum.com](http://www.fortlareinemuseum.com)
- All summer long...
  - Prairie Flow Trails, Home of the Junk Yard Dogs (see pages 20 & 21)
  - Simplot Central Park, featuring the McCain Interactive Fountain, Rotary Skate Park and more!
  - Southport Bowl, 50% OFF lanes All Summer Long! [www.centralplainsrecplex.com](http://www.centralplainsrecplex.com)
  - Prairie City Cinema, Summer at the Movies (Wed matinees) [www.prairiecitycinema.ca](http://www.prairiecitycinema.ca)
  - Annual Summer Book Sale, Portage Library, [www.portagelibrary.com](http://www.portagelibrary.com)
  - TD Summer Reading Club, Portage Library, [www.portagelibrary.com](http://www.portagelibrary.com)
  - Free Summer Public Skating, arena schedule at [www.strideplace.ca](http://www.strideplace.ca)
  - Splash Island Waterpark, schedule online at [www.SplashIsland.ca](http://www.SplashIsland.ca)
  - Crescent Lake Kayak Rentals, [www.strideplace.ca](http://www.strideplace.ca)
  - Southport Gymnasium, free individual drop-ins, [www.centralplainsrecplex.com](http://www.centralplainsrecplex.com)
  - Disc Golf Course, Island Park, disc rentals at [www.strideplace.ca](http://www.strideplace.ca)
  - Portage Golf Club, [www.portagegolfclub.ca](http://www.portagegolfclub.ca)
  - PLLC Cycling Ride & Shine, every Saturday morning, [www.pllc.ca/events](http://www.pllc.ca/events)
  - Fort la Reine Museum, Book a guided tour or field trip, [www.fortlareinemuseum.com](http://www.fortlareinemuseum.com)
  - Portage Farmers Market, PCI Parking Lot, Saturdays from 10 am - 2:00 pm
  - Community Playgrounds (Island Park, Koko Platz Rec Centre, Simplot Central Park, 9th St Playground, Caithness St. Playground, Dalzel Park, McKay Playground, Prosvita Park)
- August 8 – Folklorama Group Tour, Register at Stride Place [www.strideplace.ca](http://www.strideplace.ca)
- August 12 & 13 – 2-Day Hip Hop Dance Intensive Workshop, register at [www.prairiefusion.ca](http://www.prairiefusion.ca)





# S U M M E R 2 0 2 5

## LINE-UP



# LIVE MUSIC

♪ ON THE ISLAND ♪

**KELLY HUMAN MEMORIAL CONCERT \* FREE \***

**\* ODDFELLOWS STAGE \***

**JULY 3<sup>RD</sup> \* BBQ FOR PURCHASE 5:00PM \* SHOWTIME 5:30PM \* HICKTOWN \*  
METIS PRAIRIE STEPPERS \* PAUL SHEPHERD \* COLLEEN BRYCE \***

**PORTAGE EX CONCERTS \* FAIRGROUNDS \* \$10 DAILY PASS \*  
\$25 WEEKEND PASS \* 6 & UNDER FREE \***

**JULY 4<sup>TH</sup> \* 7:00PM TOM PETTY TRIBUTE: DAMN THE TORPEDOES \* 8:45PM TOOTH & NAIL \***

**JULY 5<sup>TH</sup> \* 7:00PM PAT BENETAR TRIBUTE: HEART BREAKER \* 8:30PM FOREIGNER  
TRIBUTE: HOT BLOODED \* 10:00PM VAN HALEN TRIBUTE: UNCHAINED \***

**JULY 6<sup>TH</sup> \* 5:00PM KATE'S OUTLAW BAND \* 6:30PM QUINTON BLAIR \***

**ONE MIC, ONE PLUG \* OPEN MIC \* FREE \* SUNDAYS \* 1 - 3PM \***

**ODDFELLOW'S STAGE JULY 6<sup>TH</sup>, 20<sup>TH</sup> / AUGUST 3<sup>RD</sup>, 10<sup>TH</sup>, 17<sup>TH</sup>  
UKRAINIAN BAND STAND JULY 13<sup>TH</sup> + 27<sup>TH</sup>**

**CONCERTS IN THE PARK \* FREE \* THURSDAYS \* 6 - 8PM \*  
\* UKRAINIAN BANDSTAND \***

**JULY 10<sup>TH</sup> \* WES PARISIEN \* JIMMY SHARPE \* NORTHERN REFLECTIONS \***

**JULY 24<sup>TH</sup> \* JO-HANNAH ATCHISON \* EMMA PETERSON \* MELISSA ST. GODDARD \***

**AUGUST 7<sup>TH</sup> \* PAUL SHEPHERD \* THE JANZEN BOYS \***

**AUGUST 21<sup>ST</sup> \* ARCHER COMPANY \* WILL BENN & TJ MURDOCK \* JOHNNY DIETRICH  
& KICKIN' UP DUST \***

**WHOOPE & HOLLAR FOLK FESTIVAL \* 15 ACTS \* \$50 ADULT  
PASS \* \$25 YOUTH AGES 13 - 17 \* 12 & UNDER FREE \***

**AUGUST 23<sup>RD</sup> \* 11:00AM - 12:00AM \* LOCATION: COTTONWOOD ACRES \* VALDY \* JOHNNY  
DIETRICH \* LEAF RAPIDS \* KELLY BADO \* LINDEN DRIVE \***

**AUGUST 24<sup>TH</sup> \* 12:00PM - 4:30PM \* LOCATION: ISLAND PARK UKRAINIAN BANDSTAND \* VALDY  
\* THE JANZEN BOYS \* SHAWN PALLISTER \***

♪ IN OUR REGION ♪

**ST. AMBROISE \* SURFSIDE BEACH TIKI BAR \*  
KARAOKE + LIVE BANDS \* FRIDAY - SUNDAY \***





# Top Bylaw Complaints in Portage la Prairie: What Residents Need to Know

Each year, the City of Portage la Prairie receives hundreds of calls and concerns from residents regarding bylaw infractions. In 2024, over 3,913 bylaw-related complaints and service requests were logged, with a few key issues standing out.



## 1. GRASS CUTTING – 660 REPORTS

Uncut lawns topped the list, with long grass and weeds being the most common report. The City requires property owners to maintain their yards. Regular mowing not only keeps neighbourhoods looking tidy but also helps control pests like mosquitoes and rodents.



## 2. UNSIGHTLY PROPERTY – 551 REPORTS

From yard clutter to derelict structures, complaints about unsightly properties were the second-most reported. These properties can lower neighbourhood appeal and property values. Bylaw officers investigate to ensure properties are cleaned up and properly maintained.



## 3. ILLEGALLY PARKED VEHICLES – 300 REPORTS

Parking violations continue to be a regular concern, with complaints ranging from vehicles parked in front yards to those left in no-parking zones or for extended periods on the street. Residents are reminded to follow posted signage and avoid obstructing traffic or driveways.



## 4. LOOSE ANIMALS – 218 REPORTS

Roaming pets, especially cats, round out the top four. While most pet owners are responsible, it's essential to keep animals on a leash or secure in a yard. Not only is it a safety issue, but it's also required under the City's animal control bylaw.

### WHY IT MATTERS

Bylaw enforcement helps keep our community safe, clean, and enjoyable for everyone. Residents are encouraged to report concerns and also take proactive steps to follow local rules. Working together, we can ensure Portage la Prairie remains a great place to live.

To report a concern, visit our website at [www.city-plap.com/council-administration/service-requests/](http://www.city-plap.com/council-administration/service-requests/)



# Street Smarts:

## Know the Rules Before You Park

Whether you're parking to run a quick errand or settling in at home for the weekend, knowing the rules of the road can save you a ticket. The City of Portage la Prairie enforces several important regulations to keep streets and sidewalks clear, safe, and accessible for everyone. Here's a quick look at the most common street parking prohibitions and sidewalk use rules.



### KEEP SIDEWALKS AND STREETS CLEAR

City sidewalks and streets are meant for safe passage, not storage or lounging. That means:

- **OBSTRUCTIONS:** No one may place goods, merchandise, or other items on sidewalks or streets, except temporarily while loading or unloading.
- **GATHERING:** Standing, sitting, or lounging in a way that obstructs pedestrian traffic is prohibited.

### STREET PARKING BASICS

Before you pull over and park, consider these common restrictions:

- No parking in a lane, on a sidewalk or on a boulevard.
- Vehicles cannot remain parked on the street for more than 72 hours.
- Do not block the entrance to a lane or to any approach leading into public or private premises.
- No parking within 3 meters of an intersection, fire hydrant or crosswalk.
- No double parking (beside another parked vehicle).

- Left-side parking is only allowed on one-way streets.
- No parking of recreational trailers or recreational vehicles on streets for more than 48 hours, unless in time-limited parking areas.

### SPECIAL RESTRICTIONS & PERMITS

- **SALES & PERMITS:** Vehicles cannot park on streets to advertise goods for sale without permission.
- **PUBLIC SAFETY BUILDING:** Parking on the north side of Lorne Avenue East (between 3rd St. N.E. and 4th St. N.E.) is limited to 1 hour for Public Safety Building visitors.

### STAY INFORMED

These rules are here to keep traffic flowing and sidewalks safe for everyone. For a full list of street parking regulations, refer to **Traffic By-Law 20-8705, subsections 45 & 46** or visit [www.city-plap.com](http://www.city-plap.com).



# Operations & Utility

The Operations and Utility Departments consist of the Engineering, Parks and Cemeteries, Transportation, Waterworks, Building Maintenance, Wastewater Treatment and Water Treatment divisions.

Operations and Utility look after treating and supplying water, road maintenance, solid waste pickup, sewer maintenance, wastewater treatment, maintaining parks and cemeteries, road construction, paving projects, and so much more.

## **TREE DISPOSAL SITE (BURN SITE)**

The Tree Disposal Site is located behind the Water Pollution Control Facility, east of River Road (PR 240), where only trees and tree trimmings may be disposed of. The site is open 9:00 am to 9:00 pm, 7 days per week. The tree disposal site is for use by City of Portage la Prairie residents only and not for commercial use. Only tree trimmings less than 2 meters long will be accepted. Disposal of anything other than trees (garbage, engineered wood, pressboard, metal, septic tank effluent, waste oil, etc.) is strictly prohibited. To report illegal disposal of non-tree waste, contact by-law enforcement at 204-239-8326.

## **COMPOST SITE**

The Public Works Department operates a compost site at the corner of 4th Avenue N.W. and 15th Street N.W. The site accepts all organic yard and garden waste (no tree trimmings, no animal waste). The site is open 24 hours per day, 7 days a week. To keep the compost site free of garbage please remove your compostable waste from plastic bags and place unwanted bags in the garbage container. Finished compost is available for use annually.

## **BULK WATER STATION**

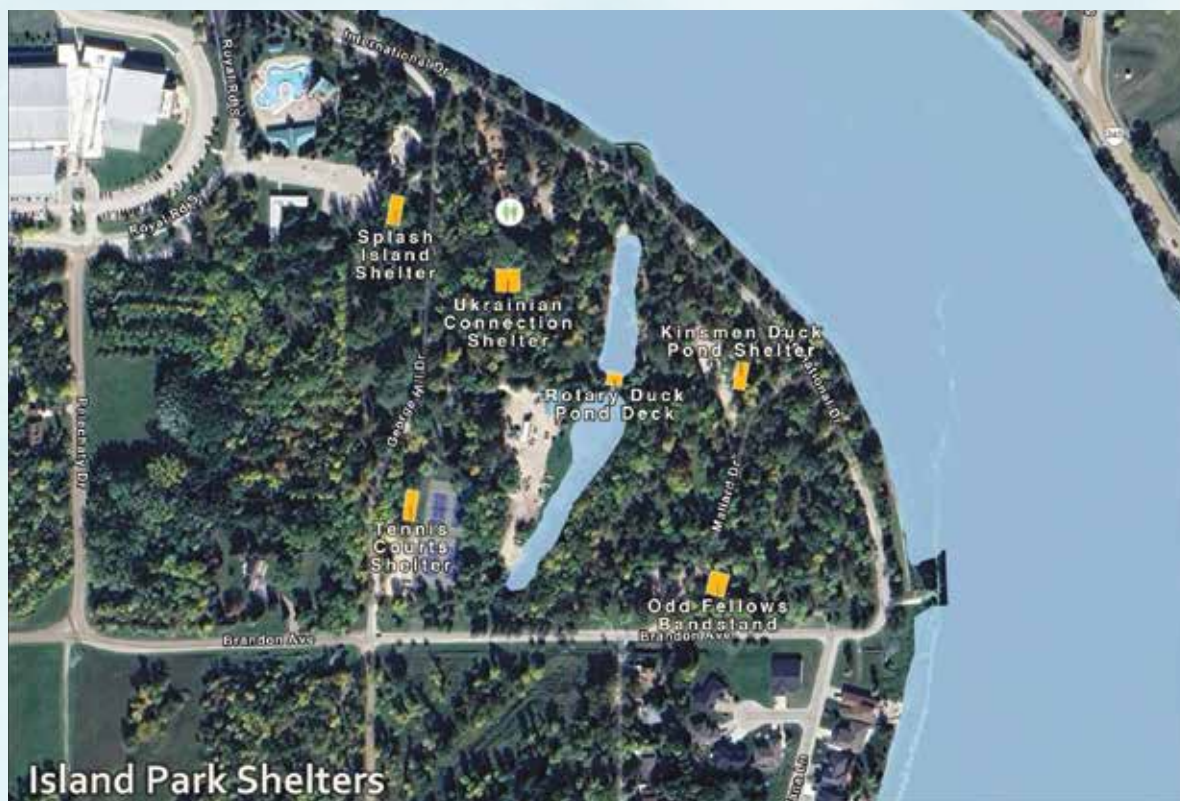
The bulk water station located at the Water Pollution Control Facility is for filling clean drinking water containers only. Containers containing any chemicals including fertilizers, pesticides, herbicides, etc. cannot be filled at this site.

## **CEMETERIES**

The Parks and Cemeteries Department maintains three cemeteries – Hillside Cemetery, Hillside Memorial and St. Mary's Cemetery. Our website has searchable maps for use. For more information about City-owned cemeteries, please contact the Operations Department at 204-239-8346







Island Park Shelters

or visit our website at <https://www.city-plap.com/home-property-community/cemeteries/>

All flowers, vases, wreaths, fences, solar lights, figurines etc. must be removed from Hillside Cemetery, Hillside Memorial and St. Mary's Cemetery by the end of October annually. Any plastic flowers and vases not removed will be discarded. The City will not be responsible for any damage to these items caused by our normal winter operations such as snow removal, openings and closings after this date.

## PARKS

There are several parks, playgrounds, green spaces, and active transportation paths throughout the City. Island Park is home to playground areas, picnic sites, and recreational facilities. There are four picnic shelters, the Ukrainian Connection Shelter, and the Rotary Duck Pond Deck available for public use at no cost. To book a shelter please contact the Operations Department at 204-239-8346 or [operations@city-plap.com](mailto:operations@city-plap.com) or complete the online Island Park Shelter Booking form on our website.



## Mosquito Control Buffer Zone Registration

The City of Portage la Prairie uses a combination of biological larviciding, monitoring, and fogging when necessary to manage mosquito populations.

Residents who wish to opt out of mosquito fogging on their property can register for a buffer zone through the City's Operations Department. A no-fog area with a 90-metre diameter will be created around registered properties.



The City of Portage la Prairie is adopting a new automated waste collection system that will come into effect August 1st.

# City Adopts New Automated Waste Collection System

*With this system, the city will have bulky waste pick up four times a year at no additional cost.*

By Lisa Kopochinski

The City of Portage la Prairie is introducing a new automated waste collection system effective August 1st, bringing residents a cleaner, safer, and more efficient way to manage household waste. This modern approach reflects best practices across the country and responds to growing demand for improved waste handling.

Automated collection is increasingly common and is now the preferred method for waste contractors. Traditional manual collection is physically demanding and ranks among the top jobs for workplace injuries, with high turnover rates and inconsistent handling. This system will help keep our streets cleaner, reduce workplace injuries, and provide added convenience for residents.

“The carts are easy to roll to the curb, hold more waste, and help prevent spills, messes, and broken bags,” said Jocelyn Lequier-Jobin, Director of Operations. “With weighted bottoms and secure lids, the carts also help keep animals out and reduce windblown litter, resulting in cleaner streets and a tidier community overall.”

## MAIN CHANGES

As for the main changes and what systems will stay in place, residents will be pleased to know that garbage pickup schedules will not change. New carts will be delivered a few days prior to August 1<sup>st</sup>.

“The contractor will provide an information package through a QR code and paper copies will be available for those that prefer,” explains Lequier-Jobin. “Carts will have a serial number that will be associated with the address

they are dropped off at.”

The one major change of this new system is that there will no longer be a bulky waste pick up with purchased tags. With the new system, the city will have bulky waste pick up weeks four times a year at no additional cost.

**“The carts have an estimated 10-year life, so the cost spread out over the lifespan works out to approximately \$9 per household per year.”**

“Residents in multi-family units—that already have carts or bins—will not see any changes in the current system,” says Lequier-Jobin.

“The main improvement of this new system is that residents will be provided with carts, as they reduce mess, reduce workplace injuries, and are also easy to roll out with large tires.”

The cost of the carts—which is approximately \$400,000—will be taken from reserve funds. There will be no charge to homeowners.

“The costs for the automated pick up are very similar to manual pick up so the only cost increases are related to the carts,” she says.

“The carts have an estimated 10-year life, so the cost spread out over the lifespan works out to approximately \$9 per household per year.”



# Solid Waste

## Automated Collection FAQ

### WHAT IS AUTOMATED CURBSIDE COLLECTION?

An automated collection truck is equipped with mechanical arms to pick up standardized, wheeled carts to empty the waste into the truck.

### WHEN WILL THE AUTOMATED CURBSIDE COLLECTION SERVICE BEGIN?

The new automated curbside collection service will start on August 1, 2025.

### WHO IS THE CONTRACTOR FOR THE NEW PROCESS?

MWM Environmental Portage  
(204) 239-6289  
[info@mwmenviro.ca](mailto:info@mwmenviro.ca)

### WHO WILL BE AFFECTED BY THESE NEW AUTOMATED COLLECTION SERVICE CHANGES?

All City of Portage la Prairie residents who currently receive manual curbside collection service.

### WILL THE TIME CHANGE FOR COLLECTION PICKUP?

No. Similar to the current manual collection service, you are responsible for storing the carts and wheeling them to the curb by 7 a.m. on collection day.

### WHAT IS THE COLLECTION FREQUENCY?

As with current manual collection service your waste cart will be emptied every week and recycling bins will continue to be emptied every two weeks on alternating weeks.

### IS YARD AND GARDEN WASTE PART OF THE NEW SERVICE?

No. The yard and garden waste curbside pickup will not change and will still be available for 4 weeks in the spring and 6 weeks in the fall with the compost drop off site available year-round. Please do not put yard and garden waste in your cart!

### IS MY COLLECTION SCHEDULE GOING TO CHANGE?

No. Your collection schedule will remain the same through the transition from manual to automated collection. The 2026 curbside collection schedule will be sent to all households in December 2025.

Schedules are also available on the City of Portage la Prairie webpage and a new mobile app "ReCollect" will also be available prior to the start of the new service.

### IS MANUAL SERVICE STILL AN OPTION WHEN THE CITY OF PORTAGE LA PRAIRIE TRANSITIONS TO THE AUTOMATED SERVICE?

No. Once the new contract is in effect in August, solid waste collection will be executed via automated trucks and the compatible carts only.

### WHAT CARTS WILL I RECEIVE?

Each eligible City of Portage la Prairie residential household will receive one (1) 360-litre black solid waste cart, free of charge.

### WHAT ARE THE AVAILABLE CART SIZES?

Only one size of cart will be delivered as part of the new program. Multi-family buildings that have existing carts will not be receiving new carts and the service will stay as is.

### WHAT ARE THE PHYSICAL SIZES OF THE CARTS?

The cart is 360L.  
Dimensions are:  
3'6" Height  
24" Width  
2'5" Depth

The carts are equipped with large wheels with a stable base, designed for easy maneuverability even in difficult terrain.



## **HOW MUCH WILL THIS NEW SERVICE COST?**

The new service will continue to be paid for by the Solid Waste utility fee, which is included in our quarterly water billing. This fee covers the cost of delivering solid waste collection services and the cost of disposal and processing of the material collected in the carts. The cost of the carts will be funded by city reserves and will not cause any increase in taxes.

## **WILL I RECEIVE AN INFORMATION PACKAGE?**

When the carts are delivered, information will be provided, including the first pick-up date and a QR code linking to additional details on the MWM Environmental website, such as how to properly set out your containers. How the cart is dropped off is how the cart should be placed on your pick-up day.

## **WHERE ARE INFORMATION PACKAGES AVAILABLE?**

The information on the MWM Environmental website will be available in paper form at City Hall, the City Operations Dept., and Herman Prior Centre.

## **WILL THE RESIDENTS OWN THE CARTS?**

No. The City of Portage la Prairie will own and be responsible for the maintenance of the carts. The carts will have serial numbers which will be assigned to the address; therefore, it is important that the carts stay with the assigned property.

## **WHAT DO I DO WITH EXTRA SOLID WASTE?**

If you have more solid waste than will fit in your cart, the following options are available:

- Keep your excess garbage for an additional week.
- If items are bulky, keep them until bulky waste pickup service is provided, which will happen four (4) times per year.
- Take the excess to the regional landfill (tipping fees will apply). See website: [www.city-plap.com/home-property-community/garbage-and-recycling/landfill/](http://www.city-plap.com/home-property-community/garbage-and-recycling/landfill/)
- Hire a local contractor to haul the excess waste.

Recycling materials is encouraged, and residents may purchase recycle bins at most retail locations.

## **WHAT IF MY CARTS GET DAMAGED, LOST OR STOLEN?**

If the cart is damaged as a result of manufacturer's defect, please contact MWM Environmental to have it serviced/replaced under the extended warranty. However, if it is deemed your cart is damaged or missing as a result of abuse or negligence, you may be responsible for the replacement cost.

If a cart is lost or stolen, the contractor will try to recover it using its serial number. If the contractor or City of Portage la Prairie cannot locate your cart, your household may be responsible for the replacement cost.

## **IS THERE AN ASSISTANCE PROGRAM IF I'M NOT ABLE TO TAKE MY CART TO THE CURB?**

Yes. MWM Environmental offers an assistance program for those unable to move the carts. Applications for this program will be available on the City website at [www.city-plap.com](http://www.city-plap.com), at City Hall, and at the Operations Department Office.

## **CAN I CONTINUE TO USE MY OWN CONTAINERS FOR COLLECTION?**

No. All residents who currently receive manual pick up will be switched to automated carts for collection. Only material inside the carts will be collected and the cart lid must be able to close for cart to be tipped. Overflowing carts will not be collected.

## **WILL SOLID WASTE TAGS STILL BE AVAILABLE TO SET OUT EXTRA MATERIAL?**

No. Extra bag tags will no longer be accepted as part of the automated collection program because the new automated trucks are not equipped to pick up material that is not inside a standardized cart. The carts are quite large and can hold more waste than standard containers.

## **WHAT IF I HAVE UNUSED EXTRA SOLID WASTE TAGS?**

Unused tags will be eligible for refund at the Operations Department located at 495 11th Street N.W. and at City Hall, located at 97 Saskatchewan Ave. E. until September 30, 2025.



## WHAT DO I DO WITH ITEMS TOO LARGE TO FIT IN THE CARTS?

As part of the new service the City will be launching four (4) scheduled bulky waste pick-up weeks per year (December, April, July, September), on your regular solid waste collection day. You may place on the curb, bulky items such as appliances, furniture, auto parts and large crates, not exceeding 45 kilograms (100 pounds) in weight. Any bulky item larger than 45 kilograms (100 pounds) is to be disposed of by the owner. The bulky pick-up schedule will be listed on the City's website by August 2025.

## WHAT DO I DO WITH MY OLD SOLID WASTE CONTAINERS?

Your existing solid waste containers are your property. There are a number of creative and environmentally friendly ways to repurpose the used containers and keep them out of the landfill, such as:

- extra storage for tools, potting soil, mulch, yard waste
- animal feed storage
- rain barrels
- DIY potato/carrot planter

## HOW SHOULD THE CARTS BE PLACED FOR COLLECTION?

The placement of the cart is very important because the automated truck's mechanical arms need sufficient room to pick up and empty the cart.

General rule of thumb for proper cart placement:

- Place wheels against the curb without impeding the sidewalk, roadway or bike lanes.
- Leave 1 metre (~3ft) of space around your carts, keeping carts away from barriers such as cars, poles, or utility boxes.



## WHAT IF I HAVE NO SIDEWALK OR CURB?

For majority of residents, please place cart at the end of your driveway, adjacent to roadway.

City of Portage la Prairie staff and MWM Environmental will be addressing the problematic areas ahead of the cart deliveries to determine the most suitable areas of cart placements. How the cart is dropped off is how the cart should be placed on your pick-up day.

## WHAT ARE THE BENEFITS OF AUTOMATED COLLECTION SERVICE?

The new service will provide residents with the following:

- Improved worker health and safety.
- Improved neighbourhood esthetics by keeping materials contained.
- Easy to roll carts with attached lids.
- Faster pick-ups, fewer delays and less emissions.

## CAN I BUY CARTS FROM THE STORE?

No. The carts may look similar, but they are different, and the City of Portage la Prairie carts will be tagged to your address. The carts that will be delivered to your home were chosen for their technical specifications, in particular, their durability and compatibility with the automated collection trucks.

Please note that only the City of Portage la Prairie carts will be collected.

## WHY DID THE DRIVER PLACE A COMMUNICATION TAG ON MY CART?

MWM Environmental will communicate with a tagging system on the lid to help resolve issues of placement, overflowing carts or products that don't belong in the trash.



THE CITY OF PORTAGE LA PRAIRIE  
OPERATIONS DEPARTMENT

DAY  
1A - 5A

**SOLID WASTE AND RECYCLABLES  
COLLECTION SCHEDULE - 2025**

Solid Waste & Recyclables will be collected on the days blocked on the calendar.  
Please have refuse out for collection prior to 7:00 a.m. on the days marked,  
but no earlier than 8:00 p.m. the day prior.

FOR INQUIRIES PLEASE TELEPHONE THE OPERATIONS DEPT.  
at 204-239-8346 or email [operations@city-plap.com](mailto:operations@city-plap.com)



DAY 1  
DAY 2  
DAY 3



DAY 4  
DAY 5

R - SOLID WASTE/RECYCLABLES  
COLLECTION DAY

H - HOLIDAY

Waste collection maps are available online at [www.city-plap.com](http://www.city-plap.com)

JANUARY							FEBRUARY							MARCH						
S	M	T	W	T	F	S	S	M	T	W	T	F	S	S	M	T	W	T	F	S
			H	R	3	4							1							1
5	6	7	8	9	R	11	2	3	4	5	6	R	8	2	3	4	5	6	7	8
12	R	R	R	R	17	18	9	R	R	R	R	14	15	9	R	R	R	R	R	15
19	20	21	22	23	R	25	16	H	18	19	20	21	22	16	17	18	19	20	21	22
26	R	R	R	R	31		23	R	R	R	R	R		23	R	R	R	R	R	29
														30	31					
APRIL							MAY							JUNE						
S	M	T	W	T	F	S	S	M	T	W	T	F	S	S	M	T	W	T	F	S
			1	2	3	4						1	2	3	4	5	6	7	8	9
6	R	R	R	R	R	12	4	5	6	R	R	R	10	8	R	R	R	R	12	13
13	14	15	16	17	H	19	11	R	R	14	15	16	17	15	16	17	18	R	R	21
20	H	22	R	R	R	26	18	H	20	21	R	R	24	22	R	R	R	26	27	28
27	R	R	30				25	R	R	R	29	30	31	29	30					
JULY							AUGUST							SEPTEMBER						
S	M	T	W	T	F	S	S	M	T	W	T	F	S	S	M	T	W	T	F	S
		H	2	3	R	5						R	2		H	R	R	R	R	6
6	R	R	R	R	11	12	3	H	R	R	R	R	9	7	R	9	10	11	12	13
13	14	15	16	17	R	19	10	11	12	13	14	15	16	14	15	R	R	R	R	20
20	R	R	R	R	25	26	17	R	R	R	R	R	23	21	R	23	24	25	26	27
27	28	29	30	31			24	25	26	27	28	29	30	28	29	H				
							31													
OCTOBER							NOVEMBER							DECEMBER						
S	M	T	W	T	F	S	S	M	T	W	T	F	S	S	M	T	W	T	F	S
			R	R	R	4							1		R	R	R	R	5	6
5	R	R	8	9	10	11	2	R	R	R	6	7	8	7	8	9	10	11	R	13
12	H	14	15	R	R	18	9	10	H	12	13	R	15	14	R	R	R	R	19	20
19	R	R	R	23	24	25	16	R	R	R	R	21	22	21	22	23	24	H	H	27
26	27	28	29	R	R		23	24	25	26	27	R	29	28	29	R	R			
							30													



THE CITY OF PORTAGE LA PRAIRIE  
OPERATIONS DEPARTMENT

DAY  
1B - 5B

**SOLID WASTE AND RECYCLABLES  
COLLECTION SCHEDULE - 2025**

Solid Waste & Recyclables will be collected on the days blocked on the calendar.  
Please have refuse out for collection prior to 7:00 a.m. on the days marked,  
but no earlier than 8:00 p.m. the day prior.

FOR INQUIRIES PLEASE TELEPHONE THE OPERATIONS DEPT.  
at 204-239-8346 or email [operations@city-plap.com](mailto:operations@city-plap.com)



DAY 1  
DAY 2  
DAY 3



DAY 4  
DAY 5

R - SOLID WASTE/RECYCLABLES  
COLLECTION DAY

H - HOLIDAY

Waste collection maps are available online at [www.city-plap.com](http://www.city-plap.com)

JANUARY							FEBRUARY							MARCH						
S	M	T	W	T	F	S	S	M	T	W	T	F	S	S	M	T	W	T	F	S
			H	2	R	4							1							1
5	R	R	R	R	10	11	2	R	R	R	R	7	8	2	R	R	R	R	R	8
12	13	14	15	16	R	18	9	10	11	12	13	R	15	9	10	11	12	13	14	15
19	R	R	R	R	24	25	16	H	R	R	R	R	22	16	R	R	R	R	R	22
26	27	28	29	30	R		23	24	25	26	27	28		23	24	25	26	27	28	29
														30	R					
APRIL							MAY							JUNE						
S	M	T	W	T	F	S	S	M	T	W	T	F	S	S	M	T	W	T	F	S
		R	R	R	R	5					R	R	3	1	R	R	R	5	6	7
6	7	8	9	10	11	12	4	R	R	7	8	9	10	8	9	10	11	R	R	14
13	R	R	R	R	H	19	11	12	13	R	R	R	17	15	R	R	R	19	20	21
20	H	R	23	24	25	26	18	H	R	R	22	23	24	22	23	24	25	R	R	28
27	28	29	R				25	26	27	28	R	R	31	29	R					
JULY							AUGUST							SEPTEMBER						
S	M	T	W	T	F	S	S	M	T	W	T	F	S	S	M	T	W	T	F	S
		H	R	R	4	5						1	2		H	2	3	4	5	6
6	7	8	9	10	R	12	3	H	5	6	7	8	9	7	8	R	R	R	R	13
13	R	R	R	R	18	19	10	R	R	R	R	R	16	14	R	16	17	18	19	20
20	21	22	23	24	R	26	17	18	19	20	21	22	23	21	22	R	R	R	R	27
27	R	R	R	R			24	R	R	R	R	R	30	28	R	H				
							31													
OCTOBER							NOVEMBER							DECEMBER						
S	M	T	W	T	F	S	S	M	T	W	T	F	S	S	M	T	W	T	F	S
			1	2	3	4							1		1	2	3	4	R	6
5	6	7	R	R	R	11	2	3	4	5	R	R	8	7	R	R	R	R	12	13
12	H	R	R	16	17	18	9	R	H	R	R	14	15	14	15	16	17	18	R	20
19	20	21	22	R	R	25	16	17	18	19	20	R	22	21	R	R	R	H	H	27
26	R	R	R	30	31		23	R	R	R	R	28	29	28	R	30	31			
							30													



Construction is set to begin this fall on the Garrioch Creek Trail.



# Garrioch Creek Trail to Receive New Trailhead Near Koko Platz Rec Club

By Kelsey James

Garrioch Creek Trail – a multi-use, out-and-back path that stretches 2.7 kilometres – will be receiving a new trailhead, with construction expected to begin this fall.

“The main trailhead site will be behind the Koko Platz Rec Club,” said Director of Operations, Jocelyn Lequier-Jobin.

“In addition to that, we’re also going to have trail markers as part of the design. It has been a goal of the City’s to improve our greenspace, so this was one of the projects that fit into that.”

In September 2024, the City announced it would be investing into all current greenspaces, as well as improving them and creating more. A structured three-year plan was presented to guide the efforts, and the City allocated funds to ensure it was completed.

The plan is funded by allocating up to \$200,000 annually over the next three years from land development fees, with \$75,000 being designated towards the Garrioch Creek Trail upgrade project. Generally considered an easy route, the trail is used for walking, running, and biking.

The new trailhead will include seating and lighting to highlight where the trail enters the forest. There will also

be a timber structure, along with some boulders placed around the area.

“It’s quite hard to see where the trail enters the forest if you’re not familiar with it, so it’s about highlighting that as an entrance into the system,” Lequier-Jobin said. “It’s not huge, but it’s definitely going to be quite visible.”

**“It has been a goal of the City’s to improve our greenspace so this was one of the projects that fit into that.”**

~ Jocelyn Lequier-Jobin

Construction on the trailhead will begin the fall after renovations to the Koko Platz Rec Club, including a new rink and clubhouse, are completed. Plans to rebuild the recreation center have been underway since the club was lost to a fire in 2021.

“As those are wrapping up, we will be starting on the trailhead,” said Lequier-Jobin, adding the project should take about a month to complete and that Scatliff + Miller +



Murray (SMM) from Winnipeg is leading the design of the structure. The general contractor hasn't been selected yet.

In total, the project is budgeted at \$150,000. The City received a grant from the provincial government through the building sustainable communities program for 50 per cent of the project up to \$75,000.

**“The new trailhead will be a celebration piece. It’s something that the community can really be proud of.”**

~ Paul Ziesmann

Once the project is complete, maintenance will be handled by the Department of Public Works. The trail system currently undergoes regular inspections, which includes removing anything blocking the paths, such as branches and dead trees, explained Public Works Superintendent, Paul Ziesmann.

“We will likely have someone come through monthly to take a look at the trail and see if there are any concerns or issues,” he added. “We also rely on and encourage

residents to report concerns, either through our website or by calling our operational team here at the office.”

Approximately every decade or as required, Garrioch Creek undergoes a more thorough cleaning. Outfall from the Assiniboine River runs through the creek, which means the City must remove the overgrowth of vegetation. Bulrushes get pushed down the creek as the water flows. Public Works puts screens around the culverts to prevent beavers from getting inside and blocking them. As well, when waste is removed from the paths, it gets incorporated back into the trail system. Branches and trees are chipped and then reused for composting.

Ziesmann doesn't anticipate the new trailhead will change how maintenance is approached, although staff will need to regularly inspect the area for vandalism, public safety issues, and provide extra cleanup if it's required.

“The new trailhead will be a celebration piece. It's something that the community can really be proud of,” Ziesmann said. “It's a piece of active transportation infrastructure, and we don't have a lot of nature trails here in Portage la Prairie, so this will be a centerpiece to our active transportation infrastructure system.”

**SAVE THE DATE**

**DECEMBER 19<sup>TH</sup> - 21<sup>ST</sup>, 2025**

**PRAIRIE UNITY  
COMPETITION  
POW WOW**

**PORTAGE LA PRAIRIE, MANITOBA**

**STRIDE PLACE**

**IN COLLABORATION WITH:  
LONG PLAIN FIRST NATION  
THE CITY OF PORTAGE LA PRAIRIE  
DAKOTA PLAINS WAHPETON NATION**

**MARK YOUR CALENDARS  
FOR THE FIRST EVENT OF ITS KIND IN OUR COMMUNITIES**

# Prairie Flow Trails:

## A New Outdoor Destination for Portage



### **PORTAGE JUNK YARD DOGS AND CITY PARTNER TO EXPAND OUTDOOR RECREATION OPPORTUNITIES.**

Portage la Prairie has a brand-new destination for outdoor adventure with the official opening of Prairie Flow Trails at 200 Old Bridge Road, commonly known as Old Dump Hill, just south of the Highway 1 bypass.

The new multi-use park features a professionally designed cycling skills park, a wheelchair-accessible nature trail, and a refurbished toboggan run. Together, these elements create a vibrant, inclusive space where residents and visitors of all ages and abilities can ride, hike, explore, and play year-round.

The creation of the park was a collaborative effort between the City of Portage la Prairie and the Portage Junk Yard Dogs Cycling Club. The City supported the project by leasing the land from the Province of Manitoba, investing \$20,000 in fencing, and providing staff resources to help move the project forward. The Junk Yard Dogs led the charge on fundraising, design, and construction, bringing the project to life through their passion, dedication, and a strong commitment to creating a space that riders of all ages and skill levels can enjoy.

The trail system includes green, blue, and black trails to suit all skill levels, from those just learning to ride to seasoned cyclists looking for a challenge.



Hikers are also welcome to explore the network of scenic walking trails, while in winter the hill transforms into a popular tobogganing spot. Whether you're on two wheels or two feet, the park offers a safe and welcoming environment to stay active outdoors.

Future plans for the site include the development of a trailhead area with two small shelters, a washroom, and upgraded signage, including trail maps to enhance the user experience. Importantly, the park is free to use and does not require a membership, making it accessible to all members of the public.

"We wanted to make sure everyone felt welcome," says Mayor Sharilyn Knox. "There are no fees, no memberships—just a free and open space for people to ride, connect, and enjoy the outdoors."

In addition to the new park, the Junk Yard Dogs also operate a 12-kilometre, all-season trail system along the Assiniboine River. For more information, visit their website at [www.portagejyd.com](http://www.portagejyd.com).

A simple way to remember the difference is by looking at Highway 240 as the dividing line. On the west side, you'll find Prairie Flow Trails, that are completely free and open to the public. It's a welcoming space where anyone can drop in and



enjoy a ride, a hike, or some tobogganing in the winter.

On the east side of Highway 240 lies the Junk Yard Dogs' original 12-kilometre all-season trail

network, which offers a more extensive experience for outdoor enthusiasts. These groomed trails support biking, hiking, snowshoeing, and fat biking year-round and are accessible through a membership that helps support ongoing maintenance and development.

With the opening of the Prairie Flow Trails, Portage la Prairie is solidifying its place as a hub for outdoor recreation and community wellness.

**"There are no fees, no memberships—just a free and open space for people to ride, connect, and enjoy the outdoors."**

~ Mayor Sharilyn Knox

# Renewed McKay Avenue Park Will Be For Kids, By Kids

**While the project began in earnest with the initial audit and inventory, one unique aspect was a consultation with Grade 1 and Grade 6 students at Yellowquill School.**

By Lyndon McLean



**A three-year capital playground renewal program, starting in 2025, lists the McKay Avenue Park rebuild/renewal as one of the first projects identified as a priority.**

When the City of Portage la Prairie began looking at revitalizing local playgrounds, they knew they'd need some help from consultants. And in planning the McKay Avenue Playground, they got feedback from a one-of-a-kind group with a special interest in the project.

In 2023 and 2024, Operations staff from the Parks and Engineering divisions completed an audit of playground projects to prioritize them as part of an initiative to increase capital components of

the City's playground renewals. Council created a three-year capital playground renewal program, starting in 2025, and the McKay Avenue Park rebuild/renewal was one of the first projects identified as a priority.

"While it's not the biggest park in Portage, it's a highly used park, and there's a centralized component to it," says Paul Ziesmann, Superintendent of Public Works. "I'd say a lot of the current playground features and infrastructure are

in a state of that renewal, more than others, so it's just a matter of updating the park."

While the project began in earnest with the initial audit and inventory, one unique aspect was a consultation with Grade 1 and Grade 6 students at Yellowquill School. Mayor Sharilyn Knox saw the opportunity to get feedback from students who are going to be using these spaces, so she tasked them to complete their own, smaller consultation project. They researched the current playground design and looked at some of the needs of kids their age.

At the end of April, the students presented their findings to Ziesmann, Operations Director Jocelyn Lequier-Jobin, the Mayor, and Council members.

"It was awesome being able to spend time with the group," Ziesmann says. "For someone in a position like myself, we have highs and lows throughout our days, so it was a day to cherish."

Ziesmann said they were impressed by the students' work and that they came up with some great ideas. One thing that was important to all students was that the playground have accessibility options, along with



clear safety signage and sustainable options like solar lighting. The students and council also agreed that the renewal should take an artistic approach to the playground.

**“While it’s not the biggest park in Portage, it’s a highly used park, and there’s a centralized component to it.”**

~ Paul Ziesmann

Ziesmann noted that it was clear the students were thinking not just about what they’d like to see but also about what future students might want and need.

Of course, a playground is all about play, and the students definitely had some ideas about that. Aside from the usual play structures, suggestions included a gaga ball pit, a basketball court, and even a zipline.

And while Ziesmann admits the \$150,000 playground renewal budget is being earmarked more so for the playground and playground equipment, the City would like the ability to add components and features in the future through yearly operating budgets. Part of the proposals would hopefully include plans that could allow for future expansion and features.

“So, this may not be the end of the McKay Avenue Park renewal,” Ziesmann notes.



Mayor Sharilyn Knox saw the opportunity to get feedback from students who are going to be using these spaces, so she tasked them to complete their own, smaller consultation project.

The student presentation has been reviewed, and the City hopes to have a request for proposals (RFP) out soon. Once the tenders come back with all the options and prices, they’ll review possibilities and

procurement policies and choose one successful bid. They’re aiming for the entire project to be completed by the end of September, in plenty of time for the kids to still enjoy the revitalized playground this year.



The City is aiming for the entire project to be completed by the end of September, in plenty of time for the kids to still enjoy the revitalized playground this year.

# Active Transportation Tips

With the installation of bike lanes on Saskatchewan Ave. W. completed, the City of Portage would like to provide information and tips for using these new facilities safely and respectfully.

## WHO SHOULD BE USING THE BIKE LANE VS MULTI USE PATH VS SIDEWALK?

The City of Portage has three main types of active transportation pathways. If you are not sure which to use here are some guidelines:

- Bike lanes are suitable for bikes, scooters, electric mobility devices, skateboards, etc. They are typically

asphalt paved and have markings designating them as bike paths. In general, if you are travelling faster than a walking pace but slower than a motor vehicle (30 km/hr or less), then using the bike lane would be appropriate.

- Sidewalks are typically concrete and are for pedestrians only, this would include mobility devices travelling at a walking pace.
- Active Transportation/Multi Use paths are typically asphalt and often will have a dashed line down the centre (Crescent Path for example). These paths are shared by pedestrians, bikes, and the other types of traffic that use sidewalks and bike lanes.



## RIDING RULES OF THUMB

Bikes are vehicles, so behave like one! Only ride in the direction of traffic, obey all traffic signs and signals, and don't ride on the sidewalk.

Be aware of and respectful of other cyclists, pedestrians, and vehicles.

When passing another cyclist or a pedestrian, make sure to say, "on your left" and ring your bell so they know you are passing and don't jut in front of you out of distraction or surprise.

Always use hand signals when you turn to alert other riders, drivers, and pedestrians of your intention to change direction.

Remember—just because you're in a bike lane doesn't mean cars will automatically respect your space.

Never assume drivers can see you and always ride with caution!





## RIDING IN PROTECTED BIKE LANES

Protected bike lanes are those that use curbs, posts, parked cars, or other barriers to shield the bike lane from moving car traffic. These lanes are for one way travel on each side of the road.

1. Use extra caution when leaving the protected bike lane. Examples include when you are maneuvering around an obstacle, making a left-hand turn, or if you need to turn around. Again, be very careful when turning left.
2. Watch for cars turning right.  
Protected bike lanes are usually designed for high visibility at intersections, but some drivers still might not be able to see clearly, and may have forgotten that a bike lane exists, or are just plain distracted.
3. If possible, ride toward the centre of the lane. When riding in a bike lane next to the curb you should ride more toward the centre of the lane to avoid puddles, debris, and anything else that could potentially fly up from the road.



## RIDING ON BIKE PATHS AND RECREATIONAL PATHS

The traffic you will encounter on bike and recreational paths is mostly from other cyclists and pedestrians. You'll only deal with car traffic at intersections.

1. Be very aware of other path traffic. This can include pedestrians, little kids, dogs, strollers, other cyclists, sightseers, etc. With so much going on, it's easier to get distracted, and people often act unpredictably.
2. Be respectful when passing other users. Call out "on your left" before you pass and consider using a bell to alert others to your presence. Depending on who you are passing and how distracted they seem, you might even want to slow down while you pass. Similarly, reduce your speed through high-traffic areas.
3. Obey lane markers, if applicable. Most bike paths have two-way traffic, so try to stay in your lane unless you're passing.

When we all follow the rules and respect other users we can contribute to a more enjoyable and fun experience for all. Remember to always use a bike helmet and ride with front and rear lights. Under Manitoba law, it's compulsory for anyone under 18 years old to wear a properly fitted and fastened helmet when cycling.



# 9PM ROUTINE

## The #9PMRoutine: A Simple Habit That Protects Your Home and Property

The City is encouraging everyone to take part in a growing community safety initiative known as the #9PMRoutine. This simple yet effective nightly habit helps reduce the risk of theft and other property crimes by reminding residents to secure their homes and belongings before bed.

### WHAT IS THE #9PMROUTINE?

The #9PMRoutine is a crime prevention initiative that encourages residents to establish a nightly routine of basic safety measures, reminding residents to lock up and check their property each night. At 9 PM, or whatever time suits your evening schedule, it's a reminder to run through a quick checklist:

- Remove valuables from vehicles (phones, wallets, money, electronics, bags)
- Remove valuables from yard (bicycles, toys, tools)
- Ensure vehicles are locked
- Remove keys from ATV's and outdoor equipment
- Lock exterior doors and windows on your house, garage, shed, etc.
- Turn on outdoor lights or set timers

This routine takes just a few minutes but can make a big difference in protecting your property and preventing crime.

### WHY IT MATTERS

Crimes of opportunity are some of the most common offences reported in our neighbourhoods. These are crimes that happen simply because the opportunity

presents itself—an unlocked car, an open garage, or a bicycle left out in plain sight. Thieves often walk through neighbourhoods checking for unlocked doors or easily accessible valuables.

The #9PMRoutine reduces these chances by encouraging everyone to be proactive. When doors are locked, lights are on, and valuables are removed from view, it makes your home and vehicles far less attractive to would-be criminals.

### BENEFITS OF THE ROUTINE

- **INCREASED PERSONAL SAFETY:** A secure home is a safer home—for you and your family.
- **REDUCED PROPERTY CRIME:** Communities that adopt this routine have seen reductions in vehicle break-ins and theft.
- **PEACE OF MIND:** Knowing you've done your part each night can help you sleep easier.
- **STRONGER COMMUNITY AWARENESS:** When more residents participate, neighborhoods become safer and more connected.

### HOW YOU CAN GET INVOLVED

Start tonight. Set a phone alarm, post a reminder near your door, or talk with your neighbors about joining the effort. Our city is proud to support this initiative and encourages every household to make the #9PMRoutine part of their daily lives. It's a small step that helps build a safer, more secure community for everyone.



# PRRA

Portage Regional  
Recreation Authority

204-857-7772 [info@prra.ca](mailto:info@prra.ca)

245 Royal Road South

Portage la Prairie, MB on the Island



FB: @StridePlace

IG: @stride\_place

[StridePlace.ca](http://StridePlace.ca)



\* **SPLASH ISLAND** [SplashIsland.ca](http://SplashIsland.ca) FB: @PortageSplashIsland IG: @SplashIslandPLAP

Two waterslides, kiddie slide, lazy river, water features, beach-like entry, picnic areas and concession. Public swims, fitness swims, aquafit, and private rentals. Summer Splash Island memberships available. Two public swim times on Saturdays and Sundays | June - September 1, 2025

\* **SPLASH ISLAND PUNCH CARD** **New in 2025**

Punch card offers ten individual weekday public swim admissions, for ALL ages, good for the entire 2025 Splash Island season! \$60 /punch card, savings of \$3 per swim. Punch cards are sold at Stride Place reception and the Splash Island admission booth. \* *Splash Island Weekends only, not accepted with any other programs or times.*

\* **DELTA BEACH CAMPGROUND** [DeltaBeachCampground.ca](http://DeltaBeachCampground.ca)

Daily camping, sand beach, play structure, picnic shelter, dump station and washrooms. Serviced Site \$36.75 /night Non-Serviced Site \$21 /night | May - October Long Weekend

\* **CRESCENT LAKE KAYAK RENTALS** [StridePlace.ca](http://StridePlace.ca)

Hourly Rental includes a kayak, paddles & life jackets. Single and double kayaks. Crescent Lake dock access. \$20 /hour & \$10 /hour for additional rental hours | June - October

## FREE SUMMER FUN FOR THE WHOLE FAMILY

\* **PICKLE BALL PADDLES & BALLS** \* **DISC GOLF DISCS** \* **BEACH VOLLEYBALL COURTS**

Free To Use. Rentals & information at Stride Place or Splash Island | May - October \* *Deposits may be required*

## PRRA FITNESS DAYS September 15 - 21, 2025

Save **20%** off ALL PRRA Memberships & **25%** off PRRA Family Memberships \* *Payment Plans Available*

### PRRA MEMBERSHIPS:

**ACTIVE:** Want full access? Enjoy the 4000 sq.ft. Viterra Fitness Centre, Homestead CO-OP Walking Track, Shindelman Aquatic Center & Splash Island (in season)

**AQUATIC:** Love the water? This gives you access to the Shindelman Aquatic Centre & Splash Island (in season)

**WALKING TRACK:** Beat the heat and the UV rays during summer! The Homestead CO-OP Walking Track is a 210 meter long indoor track with 2 - 1 meter wide lanes.

### SWIMMING LESSON REGISTRATION DATES

FALL 2025

AUGUST 27, 2025

WINTER 2026

DECEMBER 17, 2025

FACILITY - PROGRAM	BASIC INFORMATION
POOL RENTAL - SPLASH ISLAND	* Local \$175/hour * Visitor \$235/hour * June - August
SUMMER ICE RENTALS	* All Ice \$145/hour * Ptg Mutual Arena 2 * June - August
ROTARY REPUBLIC PARK	* Soccer, Baseball, Football / Rugby * Seasonal Athletic Park * May - October
POOL PARTY - SHINDELMAN	* 16 People * Public Swimming * \$150 * 2 hours in the Pool Party Room
REGULAR ICE RENTALS	* Youth \$138/hour * Adult \$181/hour * September - May
POOL RENTAL - SHINDELMAN	* Local \$145/hour * Visitor \$208/hour * September - May
FREE PUBLIC SKATE	* Public, Family, Senior, Sticks n' Pucks Tiny Tots * Now including summer

# Portage la Prairie Regional Landfill

Portage Regional Landfill

26095 PR#227

Telephone: 204-871-4549

Landfill Contact: Jamie Lilley

Email: [jlilley@city-plap.com](mailto:jlilley@city-plap.com)

Residents may deliver waste to the Portage la Prairie Regional Landfill site located 12 km north of the City on PR 240 and 15 km east on PR 227.

Effective January 1, 2025, the Landfill began a \$250.00 penalty for all untarped loads. Tipping Fees of \$65 per metric tonne apply to all City residents.

The Landfill has a minimum charge of \$10 which applies to loads of 200 kgs or less. A \$10 per metric tonne provincial Waste Reduction and Recycling Support Levy has been applied to waste deposited in the landfill.

The Landfill will no longer charge for freon-containing appliances.

## BEFORE YOU LEAVE HOME...

- Review your City of Portage la Prairie Waste Reduction Guide to see which products can be kept out of the Landfill. Hazardous waste (e.g., oil, flammable products, and any type of chemical) is not accepted at this site. However, Portage & District Recycling operates a Household Hazardous Waste Depot and will accept these items. Please do not place hazardous materials out for curbside collection.
- Sort loads by material type.
- The Landfill recycles metals, freon-containing appliances, tires, mattresses, and box springs.
- Remove all fluids from gas-powered equipment.
- Remove all batteries from waste. Batteries should be disposed of at Portage and District Recycling or an authorized retailer.

## DID YOU KNOW?

- Haulers from outside the region often comment that the Portage la Prairie Regional Landfill is one of, if not the best kept, landfills in Manitoba.
- When damaged, Lithium-Ion Batteries can instantly catch fire and explode, injuring workers and destroying equipment and facilities



*Construction of a Leachate Holding Pond and a Clay Burrow Pit started in 2024. Construction will continue in 2025. These are the main infrastructure improvements currently approved for the site.*

- Customers must make their own arrangements to unload heavy materials.
- Secure open loads with a tarp and straps or rope. The Landfill will be enforcing a \$250.00 penalty for all untarped loads.
- The Landfill accepts cash, Debit, Visa, and Mastercard.

## HOURS OF OPERATION

- April 1 to October 31: Monday to Saturday, 8:30 am to 6:00 pm. The last loads of waste will be accepted at 5:30 p.m. After that time, the landfill gates will be closed to allow customers already inside to finish disposing of their waste and exit. Staff will be available to open the gates for exiting vehicles.
- November 1 to March 31: Monday to Saturday, 8:30 am to 4:30 pm
- Closed Sundays and all Statutory Holidays

## ADDITIONAL INFORMATION

There is no scavenging, trespassing, or hunting allowed on the Landfill site.

Your cooperation in helping to keep the customers and staff of the Landfill safe is appreciated.

The Portage la Prairie Regional Landfill Authority operates the development as a Class 1 Waste Disposal Ground pursuant to regulations under the Environment Act, Manitoba Regulation 37/2016 and Environment Act Licence No. 3278.

## MEMBERS OF THE BOARD

Terrie Porter (Chair), Doug McAuley (Vice-Chair), Ryan Espey, Colin Doyle, Roy Tufford, and Garth Asham.



# WATER MAIN FLUSHING PROGRAM 2025

## PUBLIC NOTICE

### CITY OF PORTAGE LA PRAIRIE – OPERATIONS DEPARTMENT

Water main flushing is being undertaken as per the following schedule to clear mains of iron and calcium scale deposits in order to maintain high quality water.

Please do not use any hot water until you have operated your cold water taps to clear the line of any discoloration that may occur during flushing.

#### **FLUSHING WILL TAKE PLACE BETWEEN THE NIGHT-TIME HOURS OF 10:00 PM – 6:00 AM**

##### **Week #1 – June 22 – June 27**

15th St. NW between Saskatchewan Ave. W. and McKay Ave.  
moving westward to 25th St NW

##### **Week #2 – June 29 – July 4**

15th St. NW to 8th St. NW between Saskatchewan and Fisher Avenues and continuing from 9th St. SW westward to city limits between Crescent Rd. and Saskatchewan Ave.

##### **Week #3 – July 6 – July 11**

7th St. NW to 10th St. NE between Saskatchewan Ave. & Fisher Ave.

##### **Week #4 – July 13 – July 18**

8th St. SW to 9th St. SE between Saskatchewan Ave. & Crescent Rd.

##### **Week #5 – July 20 – July 25**

15th St. NW to Tupper St. NW north side of tracks

##### **Week #6 – July 27 – August 1**

Royal Rd. to Westco Dr. north side of tracks

##### **Week #7 – August 3 – August 8**

Koko Platz and Island Park Areas

##### **Week #8 – August 10 – August 15**

Mellenville and Old Bridge Road Area

**For further information, please call  
the Department of Operations at 204-239-8346**

In November 2023, we proudly unveiled our Strategic Direction to the public, emphasizing our commitment to five key initiatives: Quality of Life, Community Safety and Well-being, Economic Opportunity, Inclusive and Informed Community, and Showcasing our Community.

Since then, we have been diligently working on the tasks outlined within each of these strategic initiatives. This infographic provides an update on our achievements to date, showcasing the progress we have made and the positive impact on our community.



## QUALITY OF LIFE

We will continue to connect and build upon the strategic investments of the past that have created a community of excellent cultural and recreational activities while ensuring we provide opportunities to grow and enhance housing in the community.

### ***What we have achieved so far:***

- Continuing to work on the development of the former Agassiz Youth Centre land. A utility service capacity study and a conceptual design of a land drainage plan have been completed. Plans are on track for road construction to be complete in late 2025 or early 2026.
- Plans for the third annual Developer Day are underway, to showcase Portage la Prairie's potential to commercial and residential developers and encourage investment.
- The Junk Yard Dogs held a grand opening ceremony at the new Prairie Flow Trails bike and activity park.
- Koko Platz Recreation Club re-construction is almost complete, including the new rink. Council approved a transfer of up to \$300,000 from the General Infrastructure Reserve to assist in completing the project.
- The Garrioch Creek trail project is being re-tendered and construction should be complete in the fall of 2025.
- As part of the City's 3-year plan for development in City parks and green spaces, lighting was completed at Simplot Central Park, pathways will be done this summer, and the bathroom should be complete in the fall of 2025. McKay Park is on track to receive a \$150,000 redevelopment this summer.



## COMMUNITY SAFETY AND WELL-BEING

We recognize that it takes an entire community working together to improve the safety and well-being of all residents. This Council is committed to working in collaboration with our partners to continue to improve and support the well-being of our citizens. Community safety is ultimately about helping communities to be and feel safe.

### ***What we have achieved so far:***

- Continued growth in the Community Safety department has resulted in an additional 2.5 positions being created, bringing the total complement of staff to one manager, 6 full-time officers and one .5 part time officer. With the additional officers trained and in place, patrol hours will increase this summer, from 7:00 am to 10:30 pm. The department has also added a second patrol vehicle, which should be in service by mid-August.
- Community engagement sessions were completed for the Community Safety and Well-Being Plan. The data has been analyzed and will be released to the public by the end of the year.





## SHOWCASING OUR COMMUNITY

We believe that community beautification and tourism-focuses investments contribute to civic pride for a more livable community. Our goal is to share out story about the quality of life we enjoy here in Portage la Prairie.

### ***What we have achieved so far:***

- A new Tourism Coordinator and Promoter has been hired by Portage Regional Economic Development (PRED).
- By providing \$20,000 in storefront improvement grants, exterior business upgrades estimated at \$59,030 are expected to be completed.
- Exterior lighting for City Hall is being tendered and work should be complete by the end of 2025.
- Assisted the Holiday Avenue Project with a second canoe display on Saskatchewan Avenue and began discussions regarding additional lighting.



## ECONOMIC OPPORTUNITY

We will build upon our accessible and diverse transportation infrastructure, ample quality water and soil, existing innovative industries and labour pool, and exceptional quality of life amenities to grow our region's economy and population in a sound and sustainable, but robust manner.

### ***What we have achieved so far:***

- Making steady progress on the detailed design for the Water Treatment Plant expansion, which is on track for construction to start in 2026.
- Continuing to incentivize and encourage investment in our downtown corridor and former Portage Mall property.
- Completed a 3-year plan for road infrastructure investment, including resurfacing, reconstruction, and annual maintenance and repair. The annual pavement project is underway, with additional work being undertaken as the tender came in under budget.



## INCLUSIVE AND INFORMED COMMUNITY

We cherish how diversity brings appreciation, understanding and energy to our region, but we also value how the friendships, bonds, and partnerships we build as we learn from each other help us find new solutions and identify new opportunities that we could not find or achieve alone. We forge renewed strength as we walk this path together.

### ***What we have achieved so far:***

- Received a national Canadian Association of Municipal Administrators (CAMA) award, along with Dakota Plains Wahpeton Nation, for our reconciliation ceremony in 2024.
- Continued CEDI (First Nation-Municipal Community Economic Development Initiative) meetings with Long Plain First Nation and Dakota Plain Wahpeton Nation to develop a regional economic action plan. Planning is also underway for the Prairie Unity Competition Pow Wow, scheduled for December 2025.

# THE PORTAGE ADVANTAGE



Portage Regional Economic Development

We're a not-for-profit agency **driving economic growth** for the City and RM of Portage la Prairie. Since 2013, we've built a strong foundation that attracts new investment, strengthens existing businesses, and **champions regional collaboration**. Our goal is to maintain and enhance an environment where success is not only possible- but expected.

**It's all part of the Portage Advantage-**  
a proven edge for businesses  
ready to grow.



CONNECT WITH PRED - **UNLOCK YOUR ADVANTAGE TODAY!**



[www.investinportage.ca](http://www.investinportage.ca)



[eoleary@investinportage.ca](mailto:eoleary@investinportage.ca)



## PORTAGE LA PRAIRIE

**There's nowhere quite like the Region of Portage la Prairie.**

From lakeside views to one-of-a-kind shops, vibrant arts, and unforgettable events, we're proud to be a place that's as unique as the people who live here.

Thank you for being part of what makes this Region so special. Keep exploring, keep celebrating, and keep sharing the best of what we do have — right here at home.

*Discover your Island on the Prairies.*



[www.discoverportagelaprairie.ca](http://www.discoverportagelaprairie.ca)







# Portage la Prairie Regional Library

40 B Royal Road N., Portage la Prairie R1N 1V1 | Ph: 204-857-4271

## Welcome!

Community members of all ages attend activities, enjoy unique events, access the internet, work on our public computers, and borrow books!

All of our programs and events are open to the public and free of charge!

Have you visited the library lately?

### SUMMER / FALL 2025

TD Summer Reading : July / August  
47th Summer Book Sale: July / August  
TD Summer Reading Wrap-Up Party: August 23  
Stuffy Sleepover: August 28 Drop Off -  
August 29 Pick Up  
Halloween Trick or Treat Event: October 25  
The Poppy Project Continues:  
Kits available in November

### LIBRARY HOURS

Tuesday	10 am to 5 pm
Wednesday	10 am to 8 pm
Thursday	10 am to 8 pm
Friday	10 am to 7 pm
Saturday	10 am to 4 pm

Closed Sundays, Mondays  
and Statutory Holidays



## SERVICES

- Books, magazines, audiobooks, DVDs, blood pressure monitors, radon screeners, air quality monitors & board games
- Databases: Libby, EBSCOhost, CBC Corner & Ancestry.ca
- Resources for Patrons with Print Disabilities: Victor Readers, Envoy Connect & CELA
- Free Wi-Fi access & public computers
- Photocopying & Printing (starting at 25¢)
- Local history archives
- Free Activities for all ages
- Exam proctoring

**Did you know?**  
You can borrow up  
to 50 items with  
your library card?

**SIGN UP FOR OUR NEWSLETTER  
FOR UP-TO-DATE INFORMATION**



portagelaprairielibrary



@portagelaprairielibrary



www.portagelibrary.com



# EVENTS

## *Around town*



Mayor Knox, and Councillors Meier, Masi, Porter and Nicholls were joined by members of the Portage Friendship Centre to proclaim June 21, 2025, as National Indigenous Peoples Day in the City of Portage la Prairie.



Mayor Knox joined the Portage la Prairie Bear Clan on a community patrol in April.



Councillor Faron Nicholls pitches in to help make 2025 McHappy Day a success.



Councillors Porter, Nicholls and Masi enjoyed Nigerian Cultural Day in June, featuring music, dance, food, fashion, and fun for all ages.



Councillors Porter and Doyle are pictured at the SWANA (Solid Waste Association of North America) Conference in Winnipeg alongside members of the Landfill team.



Mayor Knox, Councillors Meier, Espey and Doyle, and City Manager Nicole Chychota at the Federation of Canadian Municipalities Annual Conference and Trade Show in Ottawa.