

# Winchelsea Star

Price \$1

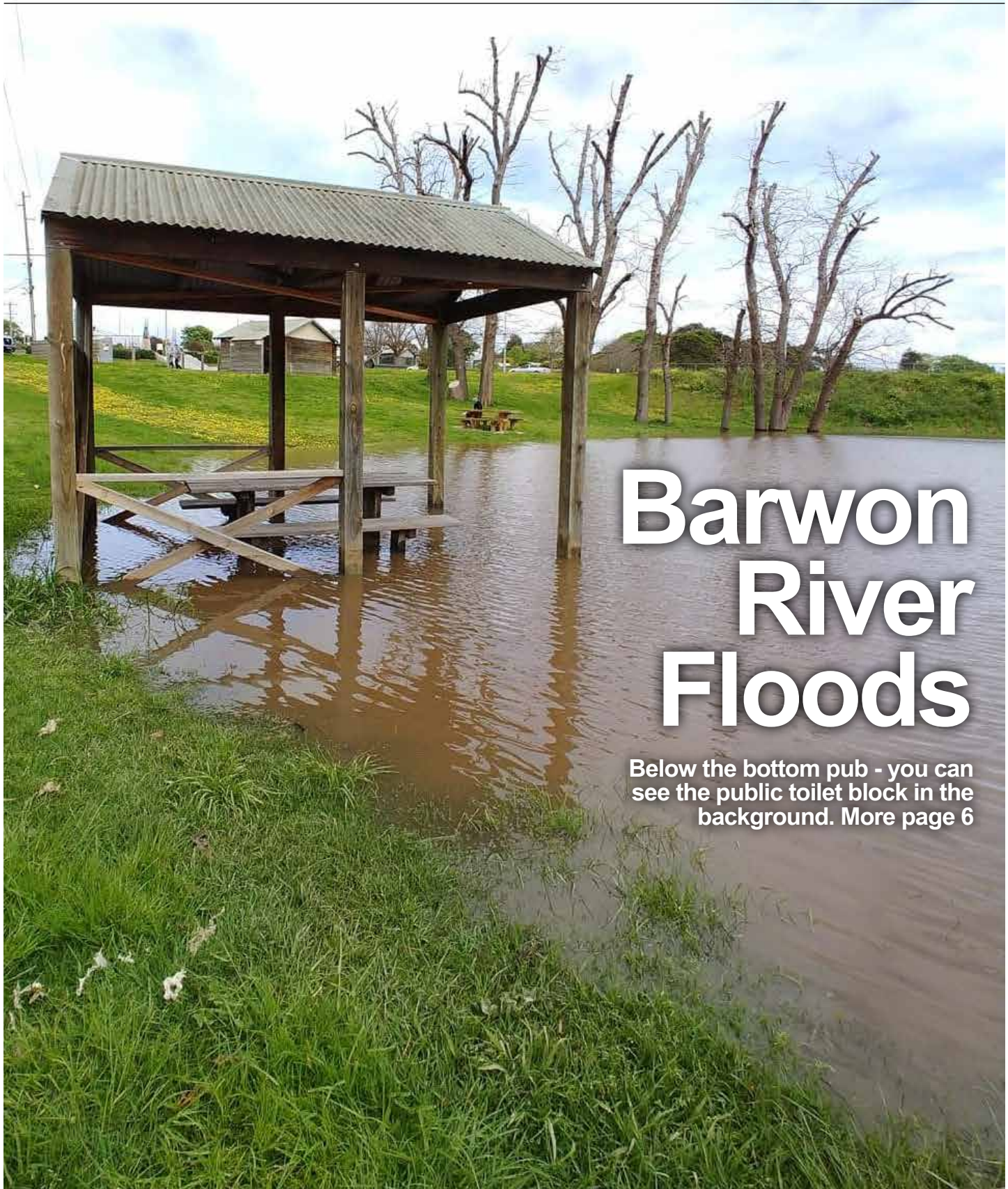
Your Weekly Community Newspaper

Since 1977

Vol 45 Ed 41

Tuesday 18 October 2022

[winchelseastar.org.au](http://winchelseastar.org.au)



## Barwon River Floods

Below the bottom pub - you can see the public toilet block in the background. More page 6





# FARMERS ARMS HOTEL BEEAC

Quality...Service...Fair Prices...All Three All The Time



## MELBOURNE CUP

### Tuesday 1 November

- Prizes for Best Dressed & Best Hat
- Champagne Breakfast
- Lucky Door Prizes
- Cocktails



Book Now



farmersarmsbeeac
\*Bookings Essential

87 Main Street Beeac

www.farmersarmsbeeac.com.au

# 5234 6341



ON WITH THE SHOW

A FESTIVE CABARET  
SHORT PLAYS AND MUSIC  
FEATURING *The Red Violets*

NOV - 24, 25, 26.  
7-30 pm. BIRREGURRA HALL

TICKETS - \$33  
at COWLICK BOOKSHOP  
OR AT [www.trybooking.com/CDBJV](http://www.trybooking.com/CDBJV)

## Farmers, lease your land for passive Income

Lease your land for a solar farm and receive an additional passive income for 30 years and up to \$50,000 upon construction, all the while diversifying your income and increasing revenue

Call Jesse: (03) 4713 5709  
jesse@bnrgleeson.com.au



We take care of  
everything for you

## Do you know a Local Legend?





Nominations open 12 September for our Local Legends recognition program 2022-23.

The program recognises Surf Coast Shire residents who have made a positive contribution to our community.

It could be an individual or group:

- Helping others and strengthening our community
- Caring for our environment
- Improving inclusion and celebrating diversity
- Promoting healthy eating and active living

We feature Local Legends in digital channels and local media showcasing the great work they do.

Recognising someone is really easy and nominations close on **Monday 31 October.**

For more information and to nominate a local legend, visit [surfcoast.vic.gov.au/LocalLegends](http://surfcoast.vic.gov.au/LocalLegends)





# Come fly with me! And they did....

Ingleby took flight with its first community fundraiser, raising funds for the Winchelsea Op Shop rebuild.

An enthusiastic group of all ages came together and celebrated our community, our families and our friendships. Guests were entertained by local Rob Davies and his rendition of Frank Sinatra classics.

The atmosphere and spirit within the group was electric, lighting up the house, the trees and the stars.

With nearly 200 people gathered, at times it felt like all the guests of the last

160 years showed up too. Overjoyed to once again see laughter, happiness and memories created.

What really stood out is nothing has changed during that time, the Southern Cross is the same and the joy that comes from spending time with each other is irreplaceable and everlasting.

With the help of our sponsors and volunteers we were able to raise over \$15,000 towards the Winchelsea Op Shop Rebuild Appeal. Thank you to Bendigo Surf Coast Community Bank, Lions Club, Pat Crosby, Dinny Goonan Wines, Pondalowie Wines, Colac Hire,

Digger Group, Winchelsea IGA, BYV Wool Brokers, Colin & Sharon Beel, Hewitt & Whitty, Coolah Wines, Laurel McLennan, Foxes Den, Nola Trotman, RAK Davis, Jess Culhane, Sue Coulson, Rob Lidgerwood, John Howell, Country Larder Foods, Laurie Davey and our wonderful volunteer waitresses and bar staff.

We look forward to seeing the development of the new Op Shop get underway at 44 Main Street. In the meantime don't forget to drop into the temporary site at 10 Willis Street.

That's life....



**Breeze Health and Wellness, Exercise Physiology  
32-34 Main Street, Winchelsea (old post office)**

Chronic disease? Injured? Wanting improved athletic performance?  
We can help you manage, rehabilitate and prevent many common ailments through movement.

Speak with your GP about a referral for a care plan.

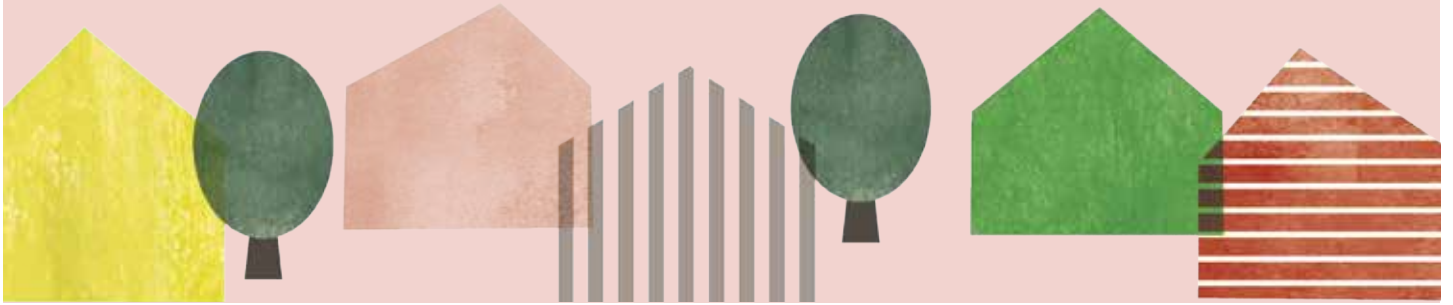
Private health accepted - no referral needed.

Call Brenton on 0428 790 023 to discuss or email [breezehealthandwellness@gmail.com](mailto:breezehealthandwellness@gmail.com)

Exercise is Medicine, Motion is Lotion. Move with Ease at Breeze.



# Help seek solution to housing crisis



Surf Coast Shire Council is calling on members of the community to contribute their input to explore increasing social and affordable housing on a Council-owned site at 2 Fraser Drive, Aireys Inlet. The site has housed residents in four affordable housing dwellings since the early 1990s, however there is potential to help ease a shire-wide accommodation shortage by further developing the site.

We are inviting you to find out more about the proposed affordable housing development and welcome your insights to help form a shared community vision for the site.

## Drop In Sessions

**Sunday 9 October: Aireys Inlet Market, 9am-1pm**

**Friday 14 October: Aireys Inlet Hall, 3-5pm**

**Saturday 22 October: Aireys Inlet Hall, 11-1pm**

**You can have your say online, visit:**

[surfcoast.vic.gov.au/housing](https://surfcoast.vic.gov.au/housing)



For more information email [info@surfcoast.vic.gov.au](mailto:info@surfcoast.vic.gov.au) phone 5261 0600



# Have you thought of learning to crochet?

The art of crochet is coming back into style. Clothing for young people features crochet tops, dresses and headwear. Probably machined crochet but none the less the art is a fashion trend.

Every second Saturday a small group of crochet enthusiasts meet at the Winchelsea Community House. This is a gift to anyone who would like to learn, particularly from the very basics, to the production of more technical work.

The spiritual leader of the Saturday group is local crochet queen, Vee. You may know her with her brightly coloured hair as she guides the children across busy roads every morning and afternoon at the school crossing. Her crochet work is an art. Vee taught herself to crochet as a 13-year-old with a book she bought from her local haberdashery (remember those?) store in Rockingham in Western Australia. Over her lifetime Vee has developed into a technically advanced crocheter and is a patient teacher for any beginner.

On Saturday 29th Vee is running a very special class using the Tunisian technique, unfortunately this workshop



is full. If you would like to come along, bring a ball of yarn, preferably light coloured, and a crochet hook if you have one. Vee has some spares for

newcomers. There is a small fee for each session and you will meet others, learn a new skill and perhaps, crochet a rug like these Vee has done.

## Winchelsea Taxis is now Surfcoast Taxis

Our fleet of vehicles are growing to all late models and we are covering an extended area including Winchelsea, Colac, Bannockburn, Inverleigh, Great Ocean Road and Geelong.

We have a fleet of 10 seater Maxi Vans, all with capacity to carry wheelchairs.

**Surfcoast Taxis Pty Ltd**  
**All Bookings: 0408 325 992**  
**Fax: 5267 2699**  
**Email: bannotaxis@gmail.com**  
 (Admin or Stan 0429 672 888)  
 66A Batson Street  
 Winchelsea 3241



Accounts NDIS provider. TAC, DVA etc

NDIS provider number 4050001044  
 NDIS provider number 4050001048

Book your next ride with **smartHAIL**

Book Track Pay Rate

Download on the App Store | GET IT ON Google Play

## Op Shop opening

**WINCHELSEA OP SHOP**

**CLOSED UNTIL FURTHER NOTICE  
 DUE TO STORM DAMAGE**

**Friday, Saturday, Sunday,  
 Monday**

**10 am to 3pm**

**All proceeds to Hesse  
 Hospital.**



# Flood Lucky

Mick OMara

Compared to much of Australia we in Winchelsea have just had quite a benign flood. Yes we had plenty of rain but the Barwon's flood level was quite manageable.

The key to what Winchelsea can expect is the gauge at Kildean Lane. What happens on the flood gauge is going to happen to Winchelsea in a few hours time. A three point nine reading at Kildean will usually put water over our river flats in Dicksons Road in about nine hours time.

How so you find the Kildean reading? On Google type in "Victoria Links to

Rainfall and River Data". Click on "Barwon" and that will bring up the Barwon river readings and Kildean.

In our latest flood the readings at Kildean increased rapidly from 1.97 metres at 2.20pm, 13/10/2022 to a peak of 6.38 metres at 2.15 pm. 14th. This gave us a top reading at Winchelsea of 4.91 metres at 8.30 pm on the 14th.

If in doubt shift your stock. It is much easier to shift your stock in daylight than about 2 am in the morning, When we bought our Dicksons Rd property 50 years ago I remember having to cut the fence to our next door neighbour to find a spot where we could swim our sheep across to safety. I will always remember

the screams of a next-door neighbour's donkey who was trapped on island as the water rose. Finally she was swept away. In a big flood from time to time you may see stock being swept downstream.

What is a big flood? In about 1995 and 2007 the floodwaters were almost at the top of the arches on the stone bridge. Apparently in the flood about 1950 the water was over the arches and it was contemplated digging a channel across the highway to prevent the bridge being washed away. From local history I think the 1950's flood was about half a metre higher than the '95 and '07. Look at the stone bridge arches and imagine the river flows that will fill them.



Below the Bottom Pub. Imagine water up to the arches



Take care when cleaning the debris off the fences. All sorts of beasts could be there including snakes

# Young, mobile voters urged to check their enrolment

Many Victorians may be unaware that they have been directly enrolled to vote in the upcoming November State election.

Direct enrolment occurs when the Victorian Electoral Commission (VEC) uses information provided by other government bodies such as the Department of Transport or the Victorian Curriculum and Assessment Authority to add people to the electoral roll.

Deputy Electoral Commissioner, Dana Fleming, says that although the VEC writes to everyone who the VEC proposes to directly enrol, research indicated that people were often not aware they had been directly enrolled.

'The process is that we write to people and advise that unless they are not eligible and tell us within 21 days, we will automatically update their enrolment with the address details we have been provided,' Ms Fleming says.

'At the last State election, voter turnout for directly-enrolled voters was close to 78% compared to the overall voter turnout rate of 90%, accounting for a significant proportion of the drop in voter turnout at the 2018 election,' Ms Fleming adds.


Data shows that this group of voters tend to be younger, more likely to have moved since the last election and less likely to vote. Accordingly, the VEC will use mobile numbers and email addresses (where provided) to send VoterAlert messaging to directly-enrolled voters ahead of the election reminding them to check their enrolment details.

Ms Fleming recommends all young people who are eligible to vote in the upcoming election go to the VEC's website before 8 pm on Tuesday 8 November to confirm that they are on the electoral roll and update their address details.

'If you've recently moved home, you may not be aware that you've been directly enrolled to vote. As everyone on the electoral roll must vote, I certainly don't want a situation where a person first realises that they should have voted when

they receive our 'please explain' letter after the election,' Ms Fleming says.

Further details on updating your enrolment details can be found on the website at [vec.vic.gov.au/enrolment/update-my-enrolment](http://vec.vic.gov.au/enrolment/update-my-enrolment)



**NOMINATION**  
for a position on the 2022-23 Growing Winchelsea Inc. Committee

Election to be conducted at the Annual General Meeting, Wednesday 16 November 2022, commencing 7.00pm

I wish to nominate .....

For the position of .....

Nominated by .....

Signature of nominator .....

Date .....

I am a current member of Growing Winchelsea Inc. and agree to be nominated for the above position.

Signature of nominee .....

Date .....

Nomination forms are to be forwarded to the GW Secretary prior to the election of office bearers. [secretary@growingwinchelsea.com](mailto:secretary@growingwinchelsea.com)



**3D design and visualisation**  
 richard@studiobutcher.com | 0413 168 741  
 architectural models | 3D prints | product development

## Free Community Service Advertisements

# Services and Activities in Winchelsea



### TRAIN SERVICES

#### To Geelong

Mon - Fri

6:41 am, 7:59am, 11:34am,  
2:01pm, 7:37pm

Sat and Sun

9:35am, 1:36pm, 7:18pm

#### To Warrnambool:

Mon - Fri

9:29am, 2:56pm, (to Colac  
5:27pm), 6:45pm, 8:53pm

Sat and Sun

8:47am, 2:49pm, 8:37pm

## Country Women's Association



7pm Second Wednesday of Month  
Winchelsea Senior Citizens' Hall

## Bus to the Hub

For reservations on the weekly bus  
to the Eastern Reserve Hub,  
please phone 52671202.

## Surf Coast Mobile Library

Surf Coast Mobile Library  
parked in Hesse Street  
(outside Shire Hall) on Fridays  
between 2:00 and 5:00pm  
unless it is a Public Holiday.  
**Hesse St, Fridays, 2pm-5pm**

## Winchelsea Taxi

0429 672 888 or 5267 2888

Wheelchair accessible  
10 seater bus available.

## Winchelsea SES

Meeting and training  
2nd Wednesday

Training 4th Wednesday

Visitors and inquiries welcome

0408 102 802

## Op Shop

Open Friday, Saturday, Sunday, Monday

10 am to 3pm

All proceeds to Hesse Hospital.

## Winchelsea and District



### Combined Probud Club

Meets 1st Monday of the

month at 10am. Senior

Citizens Rooms, Harding St, Winchelsea.

New members always welcome.

Enquiries Linda 0439 817 263.

## Body Therapy Classes

### Yoga, Pilates, Qi Gung and Mindfulness Meditation Practices

Tuesdays 6.15pm \$13 Cash

Catholic Church Hall -School Term Only

**Dr Haidee Benning, 0428 177 964**

## Winchelsea Playgroup

Every second Thursday 10am-12pm

St Thomas Anglican Church Hall

cnr Barwon Tce and Hopkins St, Winchelsea

Contact: Melissa 0456181268

Facebook - Winchelsea Playgroup 2019

**New families welcome**

## Winchelsea Girl Guides

Our Unit meets at the Catholic Church

Hall, Harding St Winchelsea

each Monday 4.30pm-6pm

All girls 5yrs- 15yrs Welcome!

Contact Yvonne Orchard 0448 672 630

or Bonnie Stokes 0401 386 274

## 1st Modewarre and Winchelsea Scout Group

**Joey's:** Tuesdays of school term 5-6pm

**Cubs:** Mondays of school term 6:30-8pm

**Scouts:** Tuesdays of school term  
6:30-8:30pm

All at Modewarre Hall, Cape Otway Rd

**Venturers:** Wed at Walton's Rd Venturer  
Den

Contact Marie McPadden 0409 330147

## Winchelsea Transfer Station

### Opening Hours

Monday	Closed
Tuesday	2pm-4pm
Wednesday	Closed
Thursday	2pm - 4pm
Friday	Closed
Saturday	1.30pm - 3.30pm
Sunday	9.30am - 12.30pm

**55 Cressy Road, Winchelsea.**

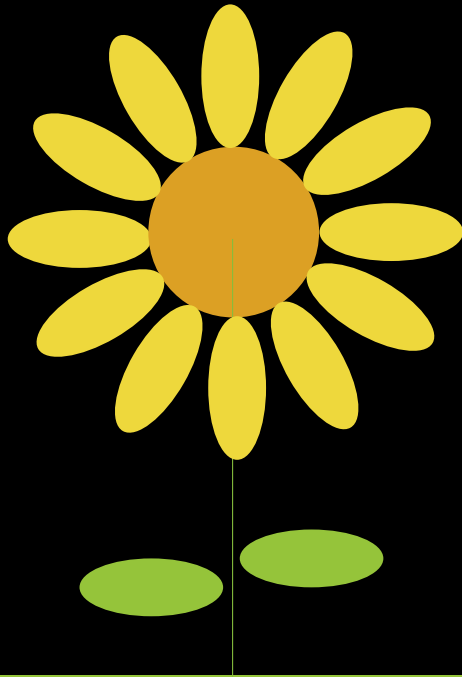
Accepts household garbage,  
mixed commercial and industrial waste,  
mixed construction and demolition waste.

Accepts recyclable materials.  
Accepts one recycle bin two waste bins.  
Does NOT accept clean fill.



# Riverlee Artists SPRING EXHIBITION

Including the Winchibalds  
28 - 30 October



Official Opening Friday 28 October 7 - 9 pm  
Globe Theatre, 17 Willis Street, Winchelsea  
Saturday 29 and Sunday 30 October 2022  
Open 10 am - 4 pm  
Devonshire tea available

# What's on in Winch!

## Dancing at the Globe Theatre in Winchelsea

Saturday 22nd October  
8pm - 11.30pm  
\$10.00

Supper provided, door prize, and raffle.  
Music by Ron Sudden. Warm Hall Friendly  
people, come along and enjoy. Contact  
Maureen 0409253188 Charlie 0419501032

## Neighbourhood Watch Winchelsea

The Annual General Meeting of the  
Winchelsea Neighbourhood Watch  
will be held on  
WEDNESDAY, 26th OCTOBER 2022  
AT 7 PM  
in the Winchelsea Bowls Club  
Hesses Street, Winchelsea

## Winchelsea Hospital Auxiliary Op Shop

Please note due to flood damage the Op  
Shop is closed indefinitely. We apologise  
for any inconvenience.

## Memorial Service

Please join us for a memorial service, and  
celebrating the life of  
John Arthur Bumford.  
Which will be held at The Hub (Winchelsea  
Football Ground)  
On Friday 21st October 2022 at 1.00pm.  
Followed by light refreshments.

## Winchelsea Men's Shed



For The Community  
51 Hesse Street  
Every Wednesday from 9:30am  
New members always welcome  
For more detail contact:  
Ray Atkinson (Co-ordinator)  
0407 839 139  
or  
winchmensed@gmail.com  
Need a job done?  
Woodworking jobs,  
furniture repairs, small jobs.  
Drop in and talk to us.

## Death notice

**BUMFORD, John Arthur.**

Sadly passed away 9th October 2022.

When deep loss befalls you,  
it will take time to be set free  
from this sad loss

Remember through it all,  
God's healing love is at work.

You were my dear friend and mentor.

You are going to be sadly missed.

Rest in peace in God's arms.

**John Bader and Family.**

**52672192 R & K Creative Framing**  
for all your framing needs

free quotes  
pension discount  
specialist in Age &  
Disability Modifications

Ray & Kim Jansen  
10 Witcombe st  
Winchelsea 3241

Ray The Home  
Maintenance HANDYMAN  
abn 47529823462

0414672192

# Control serrated tussock before seeding

Now is the ideal time to check your property for the noxious weed serrated tussock (*Nassella trichotoma*). The recent rains and warm start to spring in some parts of Victoria has been good for pastures and crops, but unfortunately, also good for the growth of serrated tussock.

Controlling serrated tussock before the plant goes to seed is critical to prevent further spread, lost productivity and increased control requirements.

“Before seeding, serrated tussock has a lime green appearance. When seeding the flowerheads have a distinctive purple colour developing as the seeds ripen in late spring and early summer. These features help serrated tussock stand out from the native tussock grasses,” Victorian Serrated Tussock Working Party Chairperson Lance Jennison said.

The VSTWP has developed an online video and information sheet to help landowners identify the unwanted grass, at <http://www.serratedtussock.com/how-identify-serrated-tussock>

“Serrated tussock has a fine leaf and will roll smoothly between the index finger and thumb, while native tussocks feel as though they have flat edges,” Mr Jennison said. “The leaves also feel rough when you run your fingers downwards due to fine serrations,” he said. “A mature serrated tussock plant can produce thousands of seeds in a season, blowing up to 20 kilometres from the parent plant.”

Before they flower and seed, serrated tussock plants can be controlled with a registered herbicide, manual removal or cultivation. “Having a healthy pasture and competitive ground cover is one of the most important aspects to weed management. Serrated tussock is a prime example of a weed that does not like competition and well established pastures,” Mr Jennison said.

It's estimated that serrated tussock now covers more than 250,000 hectares of land in Victoria. Treating plants prior to seeding

is vital to prevent further spread across Victoria and impacts on our agricultural and environmental assets. It is best to control serrated tussock before it gets out of control. Large infestations require ongoing management and the integration of a number of control techniques, which can cost large sums of money and time.

The VSTWP recently commissioned case studies on the economic costs of not treating serrated tussock, which concluded

that if serrated tussock is left to infest a property or landscape, the cost of controlling it will be at least five times higher than if it was prevented in the first instance”. This is a massive cost saving and an important message to deliver to landowners who have untreated plants on their property.

For further information, please visit [www.serratedtussock.com](http://www.serratedtussock.com), or contact the VSTWP on [info@serratedtussock.com](mailto:info@serratedtussock.com)

Christ Church Birregurra presents...

A talk on

## Georgette Heyer

by Dr Jennifer Kloester

Proceeds go to the Andrew Love Cancer Centre, Geelong and Christ Church Birregurra

If you've never read bestselling historical novelist **Georgette Heyer**, or if you've read and loved her books to bits, or if you're just a fan of *Bridgerton*, then you're sure to find this marvellous talk of interest.

Why are her novels still so popular? And what is it about the Regency era that keeps people coming back for more?

Join us to find out with Heyer expert, **Jennifer Kloester**. Jennifer is the bestselling author of **Georgette Heyer's Regency World** and **Georgette Heyer: Biography of a Bestseller**.

*"One of my guiltiest pleasures"*  
Stephen Fry

**Saturday November 12**  
**1 Sladen St Birregurra**  
**2.30pm**  
*followed by afternoon tea*  
**Tickets \$25 ea**  
[www.trybooking.com/CCTKP](http://www.trybooking.com/CCTKP)

Cash ticket sales and enquiries please call Barb 5236 2655

# Work skills program in hot demand

Sixty young people from across Surf Coast Shire have fine-tuned futures as baristas and food handlers with completion of free training courses in Anglesea, Lorne and Winchelsea.

Surf Coast Shire Council's Youth Development Team organised the work skills program for participants aged 14 to 25, and had to double the number of sessions to meet demand.

The barista courses held in Anglesea and Lorne were run by The Coffee School Bus mobile training unit, and the food handling courses were run by RSA For Schools at Winchelsea's former shire hall.

Young participants rated them as great value.

"It was really educational and helped me learn how to make coffee and how to make it taste good," Finn, 15, from Anglesea said.

Dharma, 16, from Anglesea said: "This coffee course was really beneficial because we learnt how to make all different sorts of coffee. This will help me in the future if I ever want to get a job at a café."

And Noah, 14, from Moriac: "Really fun course. Nice educators."

Mayor Libby Stapleton said the courses, run during the September school holidays, were supported by funding from the Victorian Government's Engage! Program.

"The courses aimed to upskill our young workforce and encourage young people to prepare for local summer job opportunities, and it was so pleasing to see the enthusiastic response," Cr Stapleton said.

"There were a few participants who already work in cafes and wanted to expand their skill sets to making coffees, but the majority were in the 14 to 16-year age group looking to go into local hospitality work.

"They were really excited to better equip themselves, and aside from their learning they also made great social connections and importantly gained valuable confidence."



# Winchelsea Star

Articles are most welcome and must carry the name and address of the sender.

**Weekly deadline is 5pm Friday.**

Copy for sports results and weekend events is Sunday 6pm (4pm for hard-copy articles/results left at IGA) unless by prior arrangement.

Copy should be emailed to [news@winchelseastar.org.au](mailto:news@winchelseastar.org.au) or left at IGA Supermarket.

The Winchelsea Star reserves the right to edit or not publish any article.

Views expressed are not necessarily those of the Winchelsea Star or its Committee.

500 online subscribers, 250 copies printed for outlets around Winchelsea.

Free subscription to digital version at [winchelseastar.org.au](http://winchelseastar.org.au)

© Winchelsea Star Org. Inc.  
All rights reserved.

Winchelsea Star Organisation Inc.  
Reg. No. A1479, ABN: 57 207 411 958  
[winchelseastar.org.au](http://winchelseastar.org.au)  
Po Box 5, Winchelsea, Vic, 3241

**Editors:**

Cerrie Fogan, Yvonne Stevens  
Judy Cameron  
[editor@winchelseastar.org.au](mailto:editor@winchelseastar.org.au)

**Advertising:**

Sasha Gauntlett and Neil McInnes  
[advertising@winchelseastar.org.au](mailto:advertising@winchelseastar.org.au)  
0408 102 802

**Layout/Sub Editors:**

Susan Corby, Charles Corby  
Stuart Fountain  
[production@winchelseastar.org.au](mailto:production@winchelseastar.org.au)

**Committee**

**President:** Mick O'Mara  
[president@winchelseastar.org.au](mailto:president@winchelseastar.org.au)

**Treasurer:** Cathy Cheadle  
[treasurer@winchelseastar.org.au](mailto:treasurer@winchelseastar.org.au)

**Secretary:** Tony Phelps  
[secretary@winchelseastar.org.au](mailto:secretary@winchelseastar.org.au)

**Committee Members:**  
Linda Carter

Printer: Mud Group  
Website: Winch Websites



Please join us for a walk around Winchelsea each Wednesday at 9.30am  
This is a free event and all are welcome  
Whether you are new to the area or if you would like to reconnect with our community



**Heart Foundation Walking Group**

- Where:** MUD HUT- Barwon Terrace – opposite La Hoot
- When:** Wednesday at 9:30am – 10:30am (approx.)
- Why:** Walking is a terrific way to catch up with people and be active!
- Cost:** Free!

Walking routes are tailored to ensure they are accessible to everyone.  
The Walking Group follows the Heart Foundation COVID safe guidelines.

For further information please call Raelene Alexander on 5267 1200 or email [RAlexander@hesse.vic.gov.au](mailto:RAlexander@hesse.vic.gov.au)

**Kyeema**  
Rural Fencing Pty. Ltd.  
Jason Armstrong & Jay Hawker  
1080 Princes Lane, Ombesley, Victoria, 3241  
0419 565085 (Jason)  
0416 585817 (Jay)  
[kyeemafarm@kyeemafarm.com.au](mailto:kyeemafarm@kyeemafarm.com.au)  
Also incorporating domestic and rural tree trimming services.

**Water Delivery**  
**WAZZA'S**  
WATER CARTAGE  
Stainless Tanker Up to 22,000 ltr loads  
Barwon Water Registered  
**Domestic & Rural Water Supplies**  
Call Wazza  
Mob: 0428 877 260  
Email: [wazza@wazzas.com.au](mailto:wazza@wazzas.com.au) Web: [wazzaswater.com](http://wazzaswater.com)

**All About Mowers & Chainsaws**  
Repairs to all makes and models of ride on mowers, domestic mowers, pumps, chainsaws, brushcutters and small engines.  
Trading Hours: Mon - Fri 8am - 5pm Saturday 8am - 12 noon  
**5267 2266** Cnr Princes Hwy & Lennox St Winchelsea  
[www.allaboutmowers.com.au](http://www.allaboutmowers.com.au)  
accounts@allaboutmowers.com.au

FERRIS CDX STIHL BRIGGS & STRATTON VICTA

# The Bell at St Thomas' Anglican Church

Do you hear the sound of a bell in the still air about 9.50 am across Winchelsea on Sunday mornings?

When the corellas come back in force, I expect they might give it renewed competition! Hopefully, it will still be heard.

Its purpose, of course, is to let the locals know that worship at the church is about to begin, and all are welcome to join in.

It is delightful to still enjoy this ancient form of communication: it is never dependent upon electricity supply, it never needs to be charged, and it won't wear out!

The bell has a rich resonance. It hangs from a stylish metal framework outside the bluestone church. Until fairly recently the bell had been hung in a separate tower nearby but the latter became decrepit and vandalised and was demolished. The bell was then stored on the floor of the church entrance where it could not be forgotten!

In 2019, Craig Cunningham consulted the then Minister, Wendy Gravalin, and the Parish Council, and the decision was made to rehang it in the current position. It was Craig's generosity that enabled the frame to be fabricated by Matt Partridge of MRP Steelworx Winchelsea, and with Matt he also arranged for the heavy bell to be lifted into its frame in November of that year, just prior to Covid.

Around the top of the bell is written: "James Barwell, Birmingham, Founder, 1871".



Roger Southern has been researching the bell. He discovered that James Barwell's company also exported much smaller animal bells to Australia. Some were found in the wreck of the Loch Ard near Warrnambool in 1873, intended to be hung around the necks of domestic animals.

St Thomas' bell was probably ordered and paid for by Thomas Austin, of Barwon Park, Winchelsea, who sadly died that same year.

Why do people have such joy in the ringing of the bell?

It sounds lovely, of course, but people at St Thomas' want others to know the joy of worship.

How wonderful to hear of the love of the creator of the universe for each one of us! How magnificent to praise God together! How moving to read the story of God's Son, Jesus, who came to this earth to be one of us, who died and was raised for us all!

How reassuring is the knowledge of the presence of the Spirit of Jesus with us wherever we go! What blessing to know God's forgiveness and peace whatever our circumstances! How helpful is it to know that whatever our age or ability God has daily purpose for us!

With all these joys, and many others, we ring the bell at St Thomas', inviting others to know them too.



**Café La Hoot**

have you tried  
'owl' coffee?

1 willis st [cafelahoot@gmail.com](mailto:cafelahoot@gmail.com) 0407 528 999

## Simco Plumbing and Gasfitting

24/7 Emergency service Ph:0400643976

- All General Plumbing and Gasfitting
- Roof and Gutters, Hot Water service changeover
- Split Systems, Air Conditioning and Wood Heaters
- Irrigation, Septic and Treatment plants
- Excavation, Bobcat and Tipper
- Rain water Tank installation
- Renovations and Extensions
- Gas conversions and servicing

Simon McGillivray  
Lic:109610. Free quotes, Fast and friendly service



**St Vincent de Paul Society**  
*good works!*

Covering Meredith, Bannockburn, Anakie, Lethbridge, Inverleigh, Teesdale, Shelford, Elaine and Winchelsea

# 52219170

Monday - Friday 9am to 2 pm  
<http://www.vinnies.org.au>

A caring Catholic organisation offering "a hand up" to all people in need.

# MRP Steelworx

Matthew Partridge  
p 0418 672 334  
e mrpsteelworx@yahoo.com.au

Welding Service

- Onsite welding
- Farm maintenance
- Farm machinery & equipment repairs
- Cattle & sheep yards
- Custom built trailers
- Supply & install gates

**BUILDING?  
RENOVATING?  
NEW HOME?  
EXTENSION?**

- ◆ BUSHFIRE ASSESSMENTS
- ◆ 6-STAR ENERGY RATINGS

**BRUCE ST. CLAIR  
0435 892 799**

CORPORATE MEMBER



Building Designers Association Victoria

## OZ TREES NURSERY & TREE PLANTING SERVICES

- Affordable seedlings—over 200 species
- Complete plantation service—farm forestry, shelter, aesthetics
- Deep ripping & mound ploughing. Rotary bed forming
- Our experienced staff will help you select species for your site conditions and needs

Also available—tree planting tools, milk cartons, plastic tree guards & bamboo stakes

569 Warrowie Rd. Colac  
P: 5233 6280 F: 5233 6393  
E: info@oztrees.com.au  
W: www.oztrees.com.au  
Open Monday—Friday  
9am—4:30pm



**Phone OzTrees for professional advice,**

## WINCHELSEA GAS CONNECTIONS

Are you connected to natural gas?  
We organize service pipes & meter connections.  
Any appliance you wish connected:

- Gas log fires
- Gas heaters
- Hot water services
- Hot plates
- Ovens
- BBQs

**RM & ME Plumbing Pty Ltd**  
**Ross 0417 561 558**  
**Murray 0434 600 139**

## Antique Repairs

By **Doug Burns** est. 1976

- All Furniture
- French polishing
- Carving
- Veneering
- Wood Turning
- Porcelain



*Unusual Requests Welcome*

180 Barwon Terrace, Winchelsea

# 0428 672 704

## B & H Modifications

### Bob Verity

55 Stephenson Road  
Winchelsea 3241  
Ph: 5267 2467  
Mobile: 0411 610 678



## Industrial Sewing Machine Work

Caravan Annexes, Trailer Covers, Shade Sails, Alterations and Repairs to Camping and Tents. Clear PVC Blinds Repairs to CLEAN Horse Rugs No Job Too Small  
Email: bobverity@southernphone.com.au

Winchelsea Trading—agents for:

**UNIVERSAL TOOL SHARPENING**

For all your sharpening needs  
Rural—Domestic— Industrial

- Hand tools
- TCT Blades
- Chainsaws
- Kitchen tools
- Garden tools
- Brobos
- Firewood saws
- Bandsaws
- Chipper & planer blades
- Drill and router bits
- Dog & horse clipping blades

**5248 2061**

*'We give you the edge you need'*

**NO MATTER WHAT YOUR PROBLEM, DODDS ELECTRIX CAN DEFUSE THE SITUATION.**

RURAL, INDUSTRIAL, COMMERCIAL. DOMESTIC  
PHONE 0438 887 360  
EMAIL: DODDSY@FASTMAIL.FM  
PO BOX 36 BIRREGURRA, VICTORIA 324  
REC: 17520 ABN: 64 581 250 880



5234 6585 0417 385 984  
For all your domestic & stock water.  
Also available for road and civil construction  
Local owned and operated.

**TRENCHES & HOLES PTY LTD.**



**PHILLIP ROBERTSON**

**☎ 0427 672 945**

**WINCHELSEA**

- General Earth Works
- Driveways
- Trencher
- Kanga Loader
- Grader
- Excavator Work (3.5 & 6.5 Tonne)
- Tip Truck
- Rock Breaker
- Post Holes & Shed Footings

A.B.N 74006896898



**St Vincent de Paul Society**  
*good works*

Covering Meredith, Bannockburn,  
Anakie, Lethbridge, Inverleigh,  
Teesdale, Shelford,  
Elaine and Winchelsea

**52219170**

Monday - Friday 9am to 2 pm  
<http://www.vinnies.org.au>

A caring Catholic  
organisation offering  
“a hand up” to all people  
in need.

**WINCH WEBSITES**  
WEB SOLUTIONS SIMPLIFIED.

**WEBSITES**

**GROW business  
INCREASE reach  
SAVE time**



Find out what a website  
could do for you  
[winchwebsites.com.au](http://winchwebsites.com.au)  
**04 887766 20**

**CONCRETER**

Alister Aitken

**No job to big or small**

- Driveways - Carports - Crossovers – Footpaths -
- Sheds Slabs - Colored Concrete – Concrete
- sealing - Exposed Aggregate – & more -

Call or text for a no obligation free quote

Servicing our local Winchelsea & Surrounding  
Areas

[alaitken.aa@gmail.com](mailto:alaitken.aa@gmail.com) or Alister - 0411 871 950

A.B.N 47 228 574 460

**Property Slashing  
and Block Mowing**

FREE QUOTES

Competitive rates for property slashing and  
mowing of your block. Servicing entire of Surfcoast  
shire and surrounding shires.

Call Scott TODAY to  
discuss your needs  
and to book in.

**0408 523 290**

Located WINCHELSEA



**IN & OUT LOGISTICS**  
A Reliable and Local business



## Winchelsea Community Facebook pages

### What's on in Winchelsea

FLYERS, LOCAL EVENTS, SMALL BUSINESS, PROMOTING WINCHELSEA

[facebook.com/WhatsoninWinchelsea](https://facebook.com/WhatsoninWinchelsea)

Winchelsea FREE

FREE ONLY

[facebook.com/groups/winchelseafree](https://facebook.com/groups/winchelseafree)

Winchelsea Community Information AUSTRALIA

POSITIVE DISCUSSION

[facebook.com/groups/207538644446972](https://facebook.com/groups/207538644446972)

Winchelsea Classifieds 3241

FOR SALE ONLY

[facebook.com/groups/216942861684082](https://facebook.com/groups/216942861684082)

Winchelsea Lost and Found

LOST PETS

[facebook.com/groups/768187693217518](https://facebook.com/groups/768187693217518)

Winchelsea op shop

[facebook.com/HospitalAuxiliaryOpShopWinchelsea](https://facebook.com/HospitalAuxiliaryOpShopWinchelsea)

Winchelsea Tea Rooms (community centre)

[facebook.com/WinchelseaTeaRooms](https://facebook.com/WinchelseaTeaRooms)

Winchelsea Community House

[facebook.com/winchelseacommunityhouse](https://facebook.com/winchelseacommunityhouse)

Winchelsea Coronavirus Community Support Group

[facebook.com/groups/2676957719207927/](https://facebook.com/groups/2676957719207927/)

The Green Winchelsea Residents

[facebook.com/groups/515322772623126](https://facebook.com/groups/515322772623126)

Growing Winchelsea Inc

[facebook.com/growingwinch](https://facebook.com/growingwinch)

Winchelsea Star

[winchelseastar.org.au/step/subscribe/](https://winchelseastar.org.au/step/subscribe/)

### Winchelsea Movie Club

[facebook.com/winchelseamovies](https://facebook.com/winchelseamovies)

Winchelsea Community Market

[facebook.com/winchelseacommunitymarket](https://facebook.com/winchelseacommunitymarket)

Winchelsea Land and River Care Group

[facebook.com/envirowinchelsea/](https://facebook.com/envirowinchelsea/)

Upper Barwon Landcare Network

[facebook.com/UpperBarwonLandcare](https://facebook.com/UpperBarwonLandcare)

Winchelsea & District Historical Society Inc.

[facebook.com/Winchelseaanddistricthistoricalsociety/](https://facebook.com/Winchelseaanddistricthistoricalsociety/)

Winchelsea Wildlife Shelter

[www.winchelseawildlifeshelter.com/](https://www.winchelseawildlifeshelter.com/)

SCARS - Surf Coast Animal Rescue Service

[facebook.com/groups/415211698950674](https://facebook.com/groups/415211698950674)

Winchelsea Gardeners

[facebook.com/groups/779878518703025](https://facebook.com/groups/779878518703025)

Winchelsea & District Historical Society

[facebook.com/Winchelseaanddistricthistoricalsociety/](https://facebook.com/Winchelseaanddistricthistoricalsociety/)

Winchelsea Repertory Society Inc

[facebook.com/winchrep/](https://facebook.com/winchrep/)

Winchelsea Globe Theatre

[facebook.com/Winchelsea-Globe-Theatre-164790897641678](https://facebook.com/Winchelsea-Globe-Theatre-164790897641678)

Winchelsea Uniting Church

[facebook.com/winchelseaunitingchurch](https://facebook.com/winchelseaunitingchurch)

St Thomas' Anglican Church

[facebook.com/StThomasWinchelsea](https://facebook.com/StThomasWinchelsea)

St John the Baptist Catholic Church

[facebook.com/pages/Winchelsea-Catholic-Church/101775670163180](https://facebook.com/pages/Winchelsea-Catholic-Church/101775670163180)

Winchelsea Mainly Music

[facebook.com/groups/668500343953191/](https://facebook.com/groups/668500343953191/)

Winchelsea Health Club

[facebook.com/WinchelseaHealthClub](https://facebook.com/WinchelseaHealthClub)

Winchelsea Playgroup 2019

[facebook.com/groups/551663435367031](https://facebook.com/groups/551663435367031)

Winchelsea Girl Guides

[www.guidesvic.org.au/](https://www.guidesvic.org.au/)

Winchelsea/Modewarre Scouts

[facebook.com/1stModewarreScouts](https://facebook.com/1stModewarreScouts)

Winchelsea Fire Brigade

[facebook.com/winchelseafirebrigade/](https://facebook.com/winchelseafirebrigade/)

Winchelsea SES

[facebook.com/groups/WinchSES](https://facebook.com/groups/WinchSES)

Country Women's Association - CWA Winchelsea Branch

[facebook.com/pg/CWAWinchelsea/](https://facebook.com/pg/CWAWinchelsea/)

Winchelsea Bowls Club

[facebook.com/Winchelsea-Bowls-Club-53378333344345/](https://facebook.com/Winchelsea-Bowls-Club-53378333344345/)

Winchelsea Blues Cricket Club

[facebook.com/groups/8999049476/](https://facebook.com/groups/8999049476/)

Winchelsea Blues FC

[facebook.com/WinchelseaFNC/](https://facebook.com/WinchelseaFNC/)

Mel's Dance Studio

[facebook.com/melsdancecentral](https://facebook.com/melsdancecentral)

Winchelsea Golf Club

[facebook.com/winchelseagc/](https://facebook.com/winchelseagc/)

[facebook.com/groups/1324943804676697](https://facebook.com/groups/1324943804676697)

Winchelsea Kyokushin Karate Club

[facebook.com/winchelseakyokushin](https://facebook.com/winchelseakyokushin)

WYLD Winchelsea Youth leisure and drop in

[facebook.com/groups/569737570027065/](https://facebook.com/groups/569737570027065/)

Lions Club of Winchelsea

[facebook.com/LionsWinchelsea](https://facebook.com/LionsWinchelsea)

Winchelsea Probus

10am 1st Mon month at Sen Citz Hall



# Winchelsea Churches

## Winchelsea Uniting Church

Hesse St, Winchelsea 3241  
uca.winchelsea@gmail.com  
0475 777 301

Services 9.30am Sundays

## St John's Catholic Church

Harding St, Winchelsea 3241  
Father Joseph Panackal  
0404598558

## St Thomas' Anglican Church

Barwon Tce,  
Winchelsea 3241  
Rev'd A. Lynne Clarke  
stthomaswac@gmail.com  
0477 672 042

## Thought for the Week

"The things we see now are  
here today,

Gone tomorrow.

So, we fix our eyes not on what  
is seen,

but on what is unseen.

For what is seen is temporary,  
but what is unseen is eternal."

**John Bader (Lay Preacher)**  
**Uniting Church.**

All the churches of Winchelsea are happy to welcome any who would like to join them for worship.

## St John's

St John's Catholic Church in Harding Street meets at 5.00pm on Saturday evenings.

Baptism preparation is on the first Tuesday of the month at St Mary MacKillop Church, Bannockburn.

Please contact Anita, 0409 432 833 or Father Joseph Panackal, 0404 598 558

## Uniting

Winchelsea Uniting Church in Hesse Street meets at 9.30 am every Sunday morning.

Worship is followed by morning tea.

Phone 0475 777 301  
uca.winchelsea@gmail.com

## St Thomas'

St Thomas' Anglican Church in Barwon Terrace meets at 10.00 am every Sunday morning, followed by morning tea in the hall.

Activities at St Thomas' during the week.

Monday 10.00 am - Mainly Music.

Wednesday 10.00 am - Know Your Bible.

Thursday 10.00 am – Playgroup, meets fortnightly, next time, next time, 20th October.

Friday 10.00 am - Know Your Bible.

Saturday 3.00 – 4.30 pm - Free Craft for those 13 to 20. BYO project. Call Ellen Miller 0439 439 065

Phone Rev Lynne Clarke 0477 672 042  
stthomaswac@gmail.com

### LIONS CLUB OF WINCHELSEA

#### PAPER RECYCLING

Paper depot rear of Senior Citizens Rooms Harding Street  
**NEWSPAPERS, MAGAZINES, PHONE BOOKS WANTED**

#### SHEEP POO FOR SALE

\$5 per bag.  
Available at paper depot rear of Senior Citizens Rooms Harding Street  
most mornings between 10 and 12 or contact David on 0410 029 857.



**RAISING FUNDS FOR OUR TOWN & DISTRICT**  
5267 2011 or 0408 520 606



**mainly music**  
est. 1990

**Fun, Interactive music sessions for pre-school children (0-4 y.o.) and parents/caregivers**

**When:** Mondays from 10 to 11 am  
(runs during school terms)

**Where:** St Thomas' Hall  
25 Barwon Tce.

**To Enquire ring: 0407838256**

## Plasterer & Painter

Daryl Hecker

Domestic & Commercial  
Renovations & Repairs  
Suspended Ceilings  
Dustless Sanding  
New Homes  
Extensions



Ph 0419 194 799



**WINCHELSEA CONCRETING**

• Driveways • Sheds • Decorative Concrete • Raft Slabs


**Robert Murphy**  
 ☎ 0438 235 237  
 ✉ winchelseaconcreting@outlook.com

## Women's Workshop

Any ladies out there who are interested in learning some workshop and home maintenance skills?

The Winch Mens' Shed are running free workshops starting in August. Let us know what you would like to learn and what days and times are most suitable. We can tailor the workshop to cover what is most requested and on days that suit most.

If you are interested in attending please contact the Men's Shed on 0407839139 (Ray) or email winchmenshed@gmail.com



MEL'S DANCE CENTRAL presents...  
**WELCOME TO THE**

# World of Disney

**SUN 13.11.22**  
 STAGED BY THE DANCERS OF MEL'S DANCE CENTRAL  
 CHOREOGRAPHY MELANIE DOBROVOLJNI  
**TICKETS ON SALE NOW!**  
 via the COPACC Box Office

Disney brought to life.  
 A stage show like no other

COLAC OTWAY PERFORMING ARTS AND RECREATION CENTRE  
 95-97 GELLI BRAND STREET, COLAC VIC  
 copacc.com.au

WWW.MELSDANCECENTRAL.COM.AU  
 @meldancecentral

## Knuckey's Winchelsea

**Ph: 5267 2011**

Knuckey's have in stock a complete range of batteries to suit tractor, heavy machinery, cars, utes

The largest range of the best oil for your vehicles—**CASTROL**—  
 'when only the best will do'

The largest range of V belts.  
 A, B, C, D M Sections  
 Bolts and nuts for all occasions  
 Steel cut to size

## AFS BOOKKEEPING

*"Your local bookkeeper"*



**Bookkeeping  
 Administration  
 Payroll  
 BAS Services  
 Xero / Myob  
 Reckon / Quickbooks  
 Registered BAS Agent**

**Angelique Snetselaar**  
**0456 077 485**  
 info@afsbookkeeping.com.au  
 www.afsbookkeeping.com.au



## direct TEMPORARY FENCING

FOR HIRE - SUPPLIED & ERECTED - 7 DAYS  
 GEELONG - BELLARINE - COLAC - SURF COAST  
**PHONE CAM 0417 310 800**

## DownRyte Excavations



- Excavations
- Drilling and Piling
- Rock Placement
- Tree and Stump Removal

Sean Hunwick  
 Mobile: 0409 447 288  
 Email: downryte@activ8.net.au



# Winchelsea Primary School: Prep – Grade 2 Athletics Day!

On Wednesday 12th October, all students from Grades Prep – 2 participated in the Surfcoast Sports Association Athletics Day.

It was a fantastic day and the students had so much fun participating in the various athletics activities on offer.

Our student leadership team also came along to assist the teachers in running our activity.

This has been the first time this event has gone ahead since 2019 and we were so glad to have it back in our calendars.

A big thank you to our families who came along to support our students on the day. The children loved having you there.

Check out some of our happy snaps from the day.





**HAVE YOUR SAY**

## Draft Youth Strategy 2022-25

Following an extensive engagement process, as well as input from the Surf Coast Youth Census in 2021, Council has developed a draft Youth Strategy 2022-25.

Council is now seeking submissions on the Draft Strategy. We welcome your feedback by **30 October 2022**.

To find out more and have your say, visit: [surfcoast.vic.gov.au/youthstrategy](https://surfcoast.vic.gov.au/youthstrategy).

[surfcoast.vic.gov.au/yoursay](https://surfcoast.vic.gov.au/yoursay)





Chiropractic - Remedial Massage - Myotherapy - Sound Healing - Breathwork



## Chiropractic care for:

Stress & Anxiety	Pain Management
Body Aches & Tension	Family Wellbeing
Poor Sleep	Health Longevity

03 5267 2240 Shop 4/21 Hesse St Winchelsea   <https://onebodychiropractic.com.au/>




**Winchelsea  
Medical  
Clinic**

**36 Main Street, Winchelsea**

Bulk Bills patients on Pension, Health Care Card and Children  
Enquiries and Bookings please phone 03 52 928 028 or  
[www.winchmc.com.au](http://www.winchmc.com.au)

**We are a vaccination provider**




## NATURAL GAS CONNECTIONS

**M. & L DRAYTON  
PLUMBING SERVICES**

**YOUR LOCAL LICENSED**

- PLUMBERS (24356)
- GAS FITTERS
- GAS CONVERTERS
- CARBON MONOXIDE TESTING

**MARK 0428 520 142**



**Moriac Veterinary Clinic**  
**0447 781 089**  
PHONE 24 HOURS  
784 Hendy Main Road Moriac  
info@moriacvet.com  
[www.moriacvetclinic.com.au](http://www.moriacvetclinic.com.au)  
HOURS // Monday - Friday: 8am - 5pm



TANGO  
Pet Grooming

**RONNIE.**  
Winchelsea's  
pet groomer.  
For appointments  
**0436 008 989**  
tangopetgrooming@gmail.com

# Lupton BUILDERS





SPECIALISING IN QUALITY

**REGISTERED Building Practitioner**

• NEW HOMES	• EXTENSIONS	• RENOVATIONS
• ALTERATIONS	• DECKS	• PERGOLAS
• GARPORTS	• VERANDAHS	• RE-GLADS
• BATHROOMS	• WINDOW REPLACEMENTS	

<b>LEIGH LUPTON</b> 0438 840 104	<b>CHRIS LUPTON</b> 0407 681 514
-------------------------------------	-------------------------------------

[LEIGHLUPTON17@GMAIL.COM](mailto:LEIGHLUPTON17@GMAIL.COM) Est. 1977

Commercial | Industrial | Domestic

## **HAMILTONS**

**Truck & Bobcat Hire**  
**Give Aaron a Call**  
**0438 438 623**




**Winchelsea Supermarket**  
 Trading Hours  
**Monday to Saturday**  
 8.30am to 7.30pm  
**Sunday**  
 10am to 7pm  
**Ph: 5267 2676**  
 29 Main St, Winchelsea

## Notice of AGM Winch Community House

Inc. No. A6247K

Notice is hereby given of the Annual General Meeting to be held on Wednesday 19th October, 2022, at 7.00pm in the Shire Hall Building, 28 Hesse St Winchelsea.

An invitation will be sent to all current 2021 members. All other interested people are asked to email [manager@winchhouse.org.au](mailto:manager@winchhouse.org.au) so an invitation can be sent. Membership, which allows attendees to vote, is 20 cents.

**AGENDA ITEMS INCLUDE:**

1/ Annual reports from co-ordinators & Committee of Management including annual statement of income & expenditure.

2/ Nominations called from the floor for Chairperson, Treasurer, Secretary/Public Officer as well as five (5) Ordinary Members for the Committee.

The Chairperson will allow any business that is relevant to the Annual General Meeting to be brought forward.

**Tony Phelps, Chairperson**




**AVAILABLE FOR HIRE** Vermeer and 4in1 bucket  
 Augers  
 Forks  
 Smudger

For more information phone 0409 433 687 or visit our facebook page MGT Carpentry

**MGT CARPENTRY**

**Big on products.  
 Big on service.  
 And big on local banking**

Find out more. Call us on 5267 3189 or search Bendigo Bank Winchelsea & District.



**BANK LOCAL**

Defibrillator Available Here  
 AED  
 Bendigo Bank



Community Bank  
 Winchelsea & District



**GREAT Bundle Deal on Bosch Hot Water... FROM ELGAS**

Buy any Bosch Bluetooth continuous flow hot water model - 16Litre, 20Litre or 26Litre and **Receive \$100\* in Elgas bonus LPG gas credits**

\*For more details: [www.elgas.com.au/appliances/bosch-continuous-flow-hot-water-model](http://www.elgas.com.au/appliances/bosch-continuous-flow-hot-water-model)

**AND... for new customers, an additional \$80 WORTH OF LPG GAS CREDITS\*\* when you open a new LPG Gas account with Elgas**

\*\*Further details can be viewed at [www.elgas.com.au](http://www.elgas.com.au)

Ask about the Elgas Easy Payment Plan - 12 months interest free\*\*\* on selected LPG appliances

\*\*\*Further details can be viewed at [www.elgas.com.au/epp](http://www.elgas.com.au/epp)

Automatic tanker gas bottle refill OR gas bottle exchange refill is available for home or business....  
Call today or visit our website for our many customer benefits and latest offers

**131 161**  
[www.elgas.com.au](http://www.elgas.com.au)

**ELGAS**

FROM \$780 or \$52.50 per month

NO CONTRACT TO SIGN

©2019 ELGAS LTD.

**STS ACCOUNTING GROUP**

**Your Taxation & Superannuation Specialists.**

Winchelsea  
**5267 2673**  
[www.surftax.com.au](http://www.surftax.com.au)

VENUE 010064

**STORAGE KING**

**SIMPLE STORAGE SOLUTIONS**

- Personal & Business Storage
- Boat, Caravan & Vehicle Storage
- High Security Premises
- Individually Alarmed Units
- Electric Gate Access
- 7 Day Access & CCTV

**YOUR STORAGE PROBLEMS SOLVED**

**5267 3116**  
6 ALSOP DRIVE, WINCHELSEA 3241



- Domestic and Commercial hire equipment
- Industrial welding gas
- Digging and Earthmoving equipment
- New trailers and trailer repairs
- Firewood
- Stockists of Royal Oil Lubricants products
- LPG for domestic and commercial requirements

Give Chris and the Team a call on **5232 1177** or email [info@colachire.com.au](mailto:info@colachire.com.au)

[www.colachire.com.au](http://www.colachire.com.au)  
**101 Wallace St Colac 3250**

**COLAC HIRE**

**M & L DRAYTON PLUMBING SERVICES**

REG No 24356 C/A No C02594

- Domestic and Rural Plumbing
- Roofing
- Sewerage & Septic
- LPG & Natural Gas Connections
- Motorised Drain Cleaning
- Backhoe Hire

**Phone Mark 5288 7244**  
**PO BOX 98 WINCHELSEA 3241**  
**Mobile 0428 520 142**

**Scott McDonald**  
**0423 413 829**

**S.J.R AUTOMOTIVE**  
ARN 848 483 848 58  
13 ALSOP DRIVE, WINCHELSEA VIC 3241

**Aquafire Healing**  
Transforming Your Health Through the Healing Power of Nature

**NATUROPATHIC MEDICINE • HERBAL MEDICINE  
NUTRITIONAL MEDICINE • HOMOEOPATHY  
REMEDIAL MASSAGE**

[www.aquafirehealing.com](http://www.aquafirehealing.com)  
Ph: 0415 530 276

**SOUTHERN GRAIN STORAGE PTY. LTD.**

**AG SUPPLIES FERTILISER GRAIN STORAGE SEED CLEANING**

**(03) 5267 2351**

**HF RICHARDSON**

PROPERTY

Residential | Rural Lifestyle | Agricultural Farms

Servicing all your real estate needs  
Ken McDonald **0418 524 150**







## Volunteers Required

- Bus Driver & Outings Assistant
- Resident Visitor
- Events and Activities Assistant
- Group Wheelchair Walks Assistant
- Appointments Escort
- Social Support Activities
- Gardening - Winchelsea

Volunteers are essential to our aged care system, supporting the wellbeing of older people in their homes and in residential settings.



For more information please contact Jessica Culhane, Communications and Community Partnership Officer via phone on [0315267 1200](tel:03152671200) or via email [jculhane@hesse.vic.gov.au](mailto:jculhane@hesse.vic.gov.au)

## Services Available



- Acute Hospital
- Urgent Care
- Residential Aged Care
- Dementia Specific Care
- Home Care Packages
- District Nursing
- Diabetes Education
- Dietician
- Occupational Therapy
- Podiatry
- Physiotherapy
- Planned Activity Groups
- Community Health Groups
- Palliative & Continence Care
- Maternal Child Health

5267 1200  
Servicing Winchelsea, Bannockburn, Beeac,  
Rokewood, Teesdale and Districts

## Winchelsea Towing

### 24 Hour Accident and Breakdown Towing

### 0418 535 402



## Wightons Lawyers

Dispute Resolution & Litigation

Debt Collection

Property Law

Wills & Estates

Powers of Attorney

Business Law

Family Law

By appointment only

22 Willis Street, Winchelsea  
ph. 5221 8777

[www.wightons.com.au](http://www.wightons.com.au)

## RM & ME PLUMBING Pty Ltd

### All General & Rural Plumbing

NEW HOMES, RENOVATIONS, EXTENSIONS

SEPTIC TANK INSTALLATIONS

SAND FILTERS, TREATMENT PLANTS

### Agents for CLARK WATER TANKS

**Ross Matthews**

**0417 561 558**

**Murray Ellis**

**0434 600 139**



Connecting you to a greener future  
HIC 23018

0467 097 101

## Servicing Geelong & the Surf Coast

### Specialising in all residential electrical work including:

- Switch board & lighting upgrades
- Outdoor lighting
- Electrical safety checks
- Energy efficient LED lighting
- Ceiling sweep fans & ventilation
- Energy saving advice

**Phone Martin Wilkinson:**  
**0467 097 101**  
[greenlead@outlook.com](mailto:greenlead@outlook.com)

132268-0018-14



# R.A.K. DAVIS & SONS

## CARTAGE CONTRACTORS

### WINCHELSEA

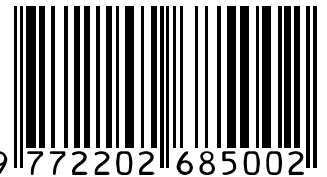
**SUPPLIER OF ALL QUARRY MATERIALS, TRUCK HIRE  
CARTAGE OF GRAIN, LIME, GYPSUM & SUPER  
LANDSCAPE & GARDEN SUPPLIES**

**56 WILLIS ST, WINCHELSEA  
Ph – 5267 2094  
Ryan – 0438 672 281  
Email: rakdavis@bigpond.com**

# Winchelsea Star

Since 1977

ISSN 2202-6851



**5234 6585 0417 385 984**  
*For all your septic tank, grease traps  
and interceptor pits servicing.  
Locally owned and operated*

## Funeral Planning

*Working out what is best for you.*  
Prepaid Funerals, Funeral Bonds, Pay-by instalments...

There are many options and its important to make the right choice.

Alyson Burchell will be available by appointment to answer any questions about funerals and planning ahead.

*For more information or to make an appointment contact Sue on 5221 4788*

*Tuckers Community Office,  
Surf Coast Taxation Services, 22 Willis Street,  
Winchelsea*

**First Tuesday of the Month,  
by appointment 10.00am - 12.00pm**

*Caring for families since 1883*

**Tuckers**  
Funeral & Bereavement Services  
*...for a life worth celebrating*

5221 4788  
www.tuckers.com.au

## Charles Stewart & Company are leading livestock and real estate service providers covering Victoria's south west

	<b>LIVESTOCK</b>
Jamie McConachy	0418 522879
Peter McConachy	0408 522878
Matt Nelson	0428 315400
Gerard Bohan	0400 005541
Lachie Barclay	0438 346291
John Thornton	0408 526367
Dougal McIntyre	0439 575612
Ross Spitty	0419 539717
	<b>REAL ESTATE</b>
Michael Stewart	0418 520467
Daryl Osborne	0419 388341
Anthony McDonald	0418 593597
Gerard Bohan	0400 005541
Stephen Lugg	0417 556098
Josh Lamanna	0417 586032

Office  
56 Bromfield Street, Colac  
www.charlesstewart.com.au

## Pixie Wash

Mobile Doggie Care  
Dogs up to 20kg  
Pixie Heath  
0417 586 080

## CAR, TRUCK REPAIRS & Roadworthys

**PH: 5267 3001**  
**Mob: 0417 137 457**

- ❑ LOG BOOK SERVICE
- ❑ AUTO ELECTRICAL
- ❑ TOWING
- ❑ AIR CONDITIONING
- ❑ CLUTCH & BRAKES
- ❑ TYRES
- ❑ WHEEL ALIGNMENT
- ❑ BATTERIES

**17 Alsop Drive**