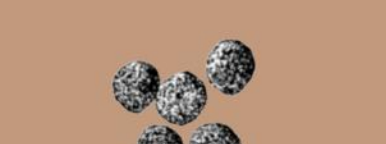
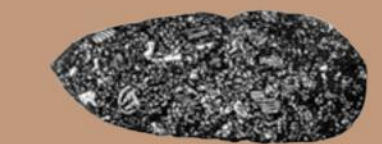
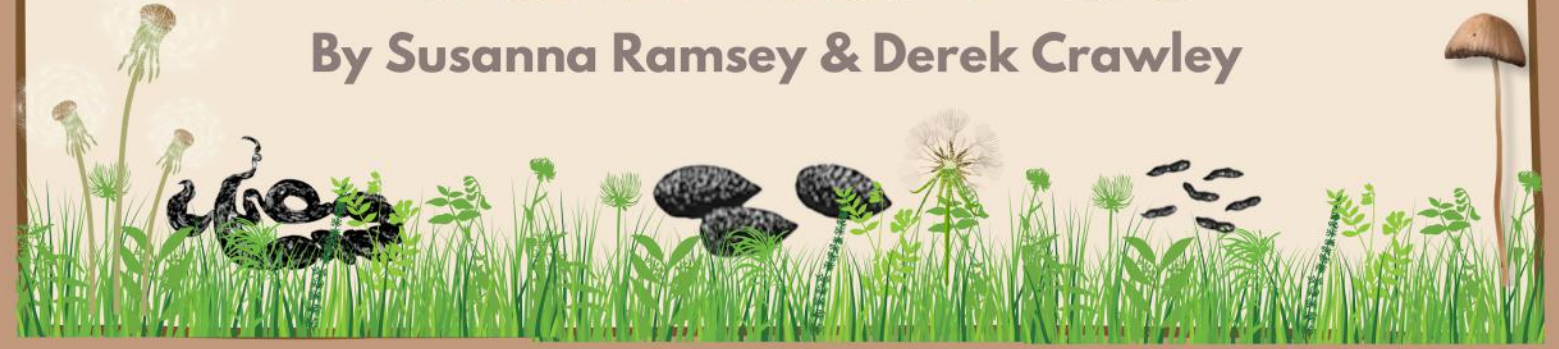




# Mammal Poo



By Susanna Ramsey & Derek Crawley



Registered Charity No 278918. Support our work at [mammal.org.uk](http://mammal.org.uk)





# Index

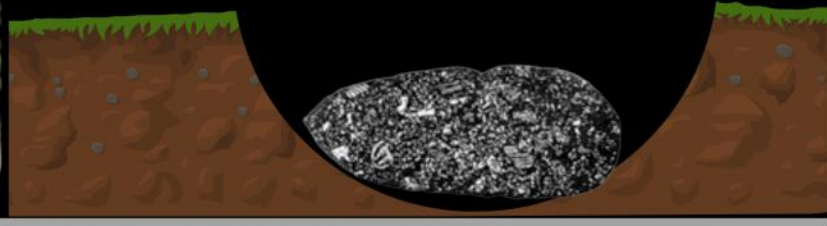


<b>Badger</b> .....	<b>Page 3</b>
<b>Common Pipistrelle Bat</b> .....	<b>Page 4</b>
<b>Domestic Cat &amp; Dog</b> .....	<b>Page 5</b>
<b>Fox</b> .....	<b>Page 6</b>
<b>Grey Squirrel</b> .....	<b>Page 7</b>
<b>Hedgehog</b> .....	<b>Page 8</b>
<b>Otter</b> .....	<b>Page 9</b>
<b>Rabbit</b> .....	<b>Page 10</b>
<b>Roe Deer</b> .....	<b>Page 11</b>
<b>Pine Marten</b> .....	<b>Page 12</b>
<b>Water Vole</b> .....	<b>Page 13</b>
<b>Wood Mouse</b> .....	<b>Page 14</b>
<b>Whose Poo Activity</b> .....	<b>Page 15</b>
<b>Whose Poo: Answers</b> .....	<b>Page 16</b>
<b>Match the Poo Activity (1)</b> .....	<b>Page 17</b>
<b>Match the Poo Activity (1): Answers</b> .....	<b>Page 18</b>
<b>Match the Poo Activity (2)</b> .....	<b>Page 19</b>
<b>Match the Poo Activity (2): Answers</b> .....	<b>Page 20</b>
<b>Report Your Sightings: Mammal Mapper App</b> .....	<b>Page 21</b>
<b>Further Research</b> .....	<b>Page 22</b>



# BADGER

Meles meles



Please remember do not touch or pick up any poo. Take a photo using a 2p coin for scale.

## Badger Poo

Colour: black, brown, purple if they contain berries

Shape: Loose, not coiled

Smell: strong, musky, oily smell

Location: in shallow pits, 10-15cm deep

May contain: seeds and berries



## Diet

Earthworms

Fruit

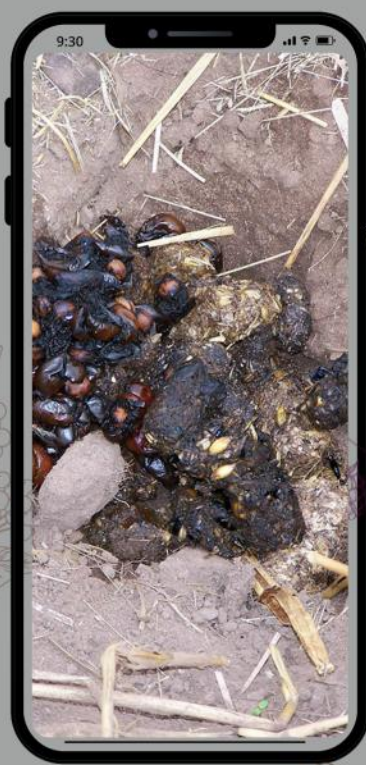
Small mammals, hedgehogs

Bee and wasp nests

Beetles



10cm long x 2cm thick



Poo photos (C) Derek Crawley, Susanna Ramsey



# COMMON PIPSTRELLE BAT

*Pipistrelle pipistrellus*



Please remember do not touch or pick up any poo. Take a photo using a 2p coin for scale.

## Bat Poo

Colour: shiny and black

Shape: rounded, oval pellets. Crumble to dust when crushed.

Smell: no smell

Location: Large piles under roosts or singly below feeding places or stuck to walls or doors

May contain: insect body parts



## Diet

1,000's of flies.

Also moths, gnats and other flying insects



Up to 8mm long



Bat wing bones (C) Derek Smith



# DOMESTIC CAT & DOG



*Canis lupus familiaris* &  
*Felis silvestris catus*



Please remember to pick up your dog's poo and put it in a bin. Do not pick up any other poo.

## Cat & Dog Poo

Colour: brown



Shape: sausage-shaped with blunt ends. May be in several parts

Soft but firm enough to pick up

Smell: strong smell



Location: on paths and tracks

May contain: mostly smooth



## Diet



Dry or tinned pet food

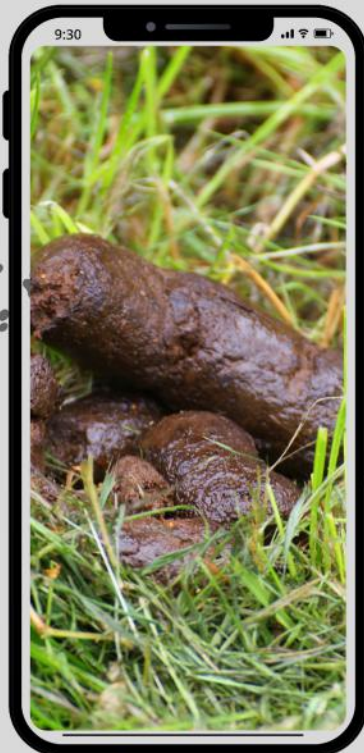
Treats



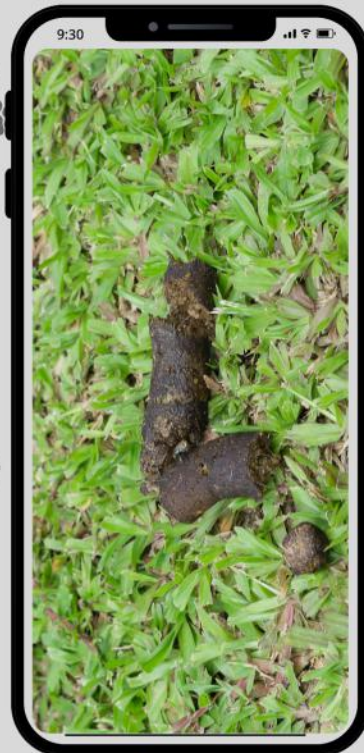
Dogs may eat raw meat or uncooked bones, fruit and raw vegetables



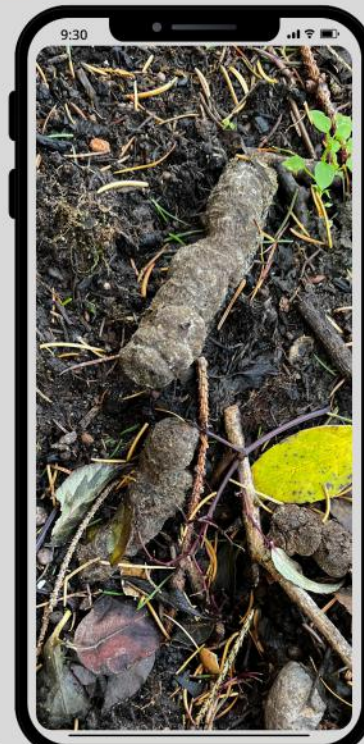
Variable sizes: 10-15cm long, 1-2cm wide



Dog poo



Dog poo



Cat poo



Cat, track from front feet.  
No claws show.

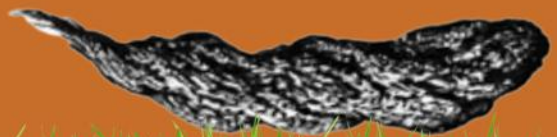


Dog, track from front feet



# FOX

Vulpes vulpes



Please remember do not touch or pick up any poo. Take a photo using a 2p coin for scale.

## Fox Poo

**Colour:** dark when fresh, grey when old, purple if it contains berries

**Shape:** long, twisted with a tapering tail at one end or shapeless & sloppy

**Smell:** strong and musty

**Location:** anywhere

**May contain:** fur, feathers, bone fragments, insects, fruit pips

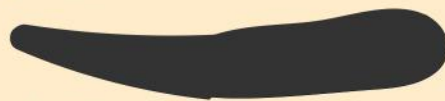


## Diet

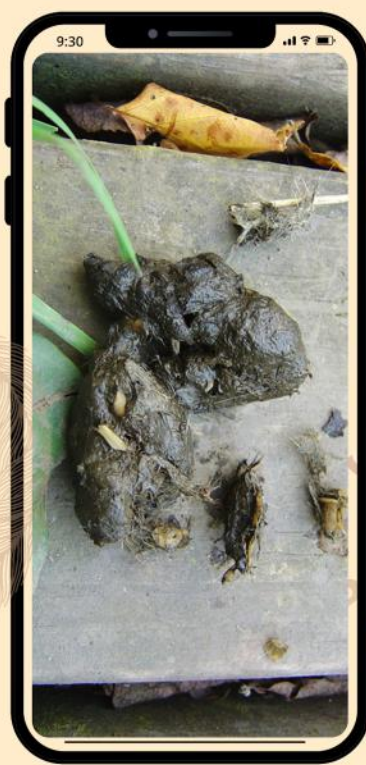
Mice, voles, rabbits, earthworms, beetles, fruit, small birds, pigeons and dead animals.



Urban foxes scavenge from dustbins and bird feeders.



8-12cm long, 2cm wide



Poo photos (C) Derek Crawley x 2, Phoebe Carter

# GREY SQUIRREL

*Sciurus carolinensis*



Please remember do not touch or pick up any poo. Take a photo using a 2p coin for scale.

## Squirrel Poo

Colour: dark grey/black; yellow if eaten pollen

Shape: small, round pellets; smaller than rabbits' droppings

Smell: depends on diet, sweet scent of pine if eaten pine cones

May contain: plant material

Location: near trees



## Diet



Tree seeds: walnuts, beech nuts, acorns, hazelnuts

Flowers, buds, plant shoots

Fungi



Birds' eggs and young



0.5-0.8cm long, 0.5cm wide



# HEDGEHOG

*Erinaceus europaeus*



Please remember do not touch or pick up any poo. Take a photo using a 2p coin for scale.

## Hedgehog Poo

**Colour:** blue/black

**Shape:** Crinkly. long and thin with a tapering tail at one end

**Smell:** sweet, hint of linseed oil

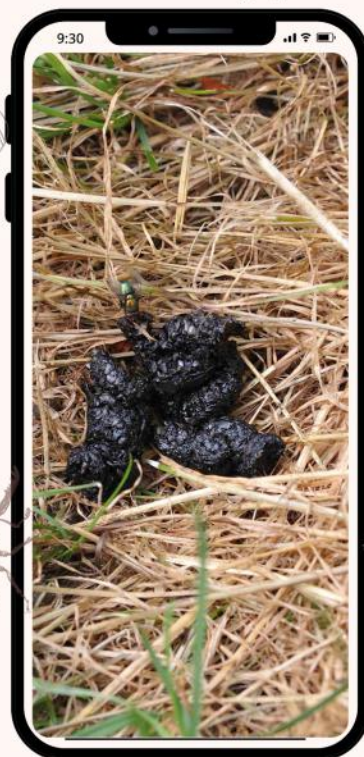
**Location:** along hedges and woodland edges

**May contain:** studded with shiny insect parts

## Diet

Mainly invertebrates:  
earthworms, slugs, beetles and caterpillars  
Occasionally the eggs of birds which nest on the ground

1.5-5cm long, 0.8-1cm wide

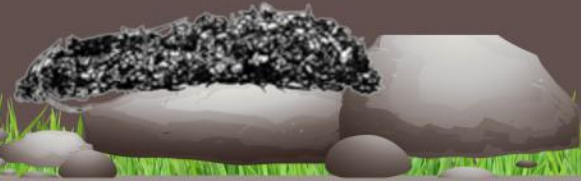


Poo photos (C) Steve Docker, Cetra Coverdale Pearson, Derek Crawley



# OTTER

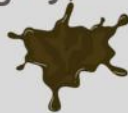
Lutra lutra



Please remember do not touch or pick up any poo. Take a photo using a 2p coin for scale.

## Otter Poo/ Spraint

**Colour:** greenish, black/grey, with jelly-like secretions.



**Shape:** long, thin, loose

**Smell:** sweet, musty, tarry smell, like jasmine tea, laurel flowers or oily rag



**Location:** very small quantities, smeared onto rocks or logs, close to water

**May contain:** fish scales, bones, shells of crustaceans, fur or feathers



## Diet

Fish like salmon, trout and char and eels.

Crayfish, frogs and, occasionally, water birds



Very variable in size



Poo photos (C) Derek Crawley



# RABBIT

*Oryctolagus cuniculus*

Please remember do not touch or pick up any poo. Take a photo using a 2p coin for scale.

## Rabbit Poo

Colour: yellowish brown/green  
dries to brown

Shape: round pellets

Smell: sweet, damp, digestive  
biscuit smell, mown hay

Location: small heaps on mounds  
such as ant hills

May contain: plant material

*Rabbits and hares eat their fresh, nutrient-rich droppings and digest them, for a second time.*



Poo photos (C) Susanna Ramsey

# ROE DEER

*Capreolus capreolus*



(c) Robin Morrison



## Deer Poo

Colour: black when fresh

Shape: oval cylinder with a point at one end

Smell: no smell

Location: scattered on the ground

May contain: plant material



## Diet

Buds and leaves of deciduous trees and shrubs.

Brambles and ivy

Conifers and ferns

Herbs, grasses and heathers



1.4cm long



Poo photos (C) Derek Crawley



# PINE MARTEN

Martes martes



Please remember do not touch or pick up any poo. Take a photo using a 2p coin for scale.

## Pine Marten Poo

- Colour: blackish
- Shape: variable. Long, thin cylinder, twist at the end
- Smell: sweet smell, like violets when fresh 
- Location: usually deposited singly
- May contain: fur and bones 



### Diet

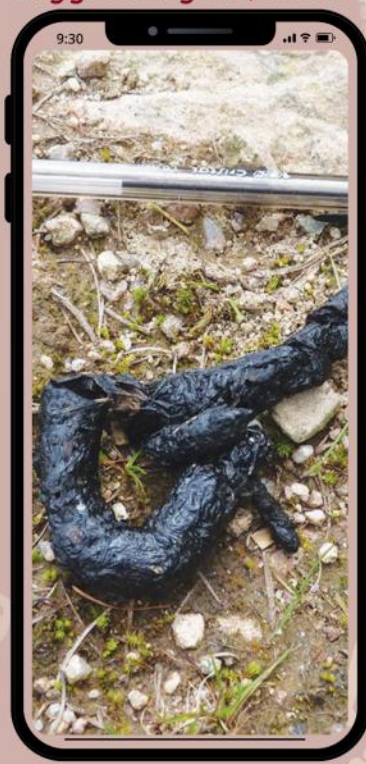
Small rodents like voles, mice, rats. 

Birds, birds' eggs, dead animals, beetles   
  


Fungi and berries   


*Pine marten poo usually has a loop in, from the wiggle they do, when dropping it!*

4-12cm long x 1.2cm thick 



Poo photos (C) Derek Crawley



# WATER VOLE

Arvicola amphibious



Please remember do not touch or pick up any poo. Take a photo using a 2p coin for scale.

## Water Vole Poo

Colour: variable but dark green when broken up

Shape: Distinctive tic-tac shape

Smell: no smell

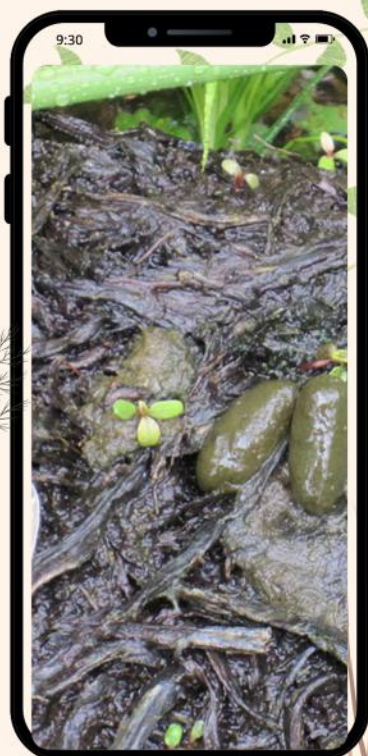
Location: small heaps in latrines or small piles near water

May contain: ?? plant material

*Plant matter in the poo may be trodden down, if it is being used to mark out territory.*



8-12mm long, 4-5mm thick



# WOOD MOUSE

*Apodemus sylvaticus*



Please remember do not touch or pick up any poo. Take a photo using a 2p coin for scale.

## Mouse Poo

Colour: black



Shape: Very small droppings. Very hard when dry. Do not crumble

Smell: no smell

Location: small heaps anywhere

May contain: plant material, seeds and insect parts



## Diet



Seeds, green plants



Fruit



Invertebrates



Fungi



4mm long



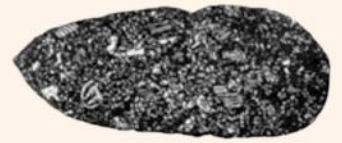
Poo photos (C) Derek Crawley





# WHOSE POO?

Mammals: badger, common pipistrelle bat, dog, fox, grey squirrel, hedgehog, otter, pine marten, rabbit, roe deer, water vole, wood mouse



.....



.....



.....

.....



.....

.....



.....

.....



.....

.....

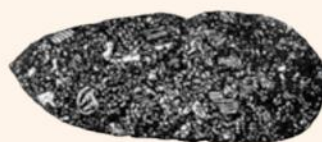
.....



# WHOSE POO? ANSWERS



otter



badger



water vole



common  
pipistrelle bat



fox



roe deer



rabbit



grey squirrel



hedgehog



dog



wood mouse

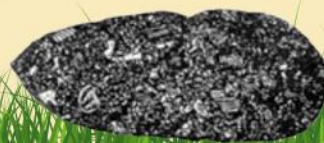


pine marten





# MATCH THE POO (1)



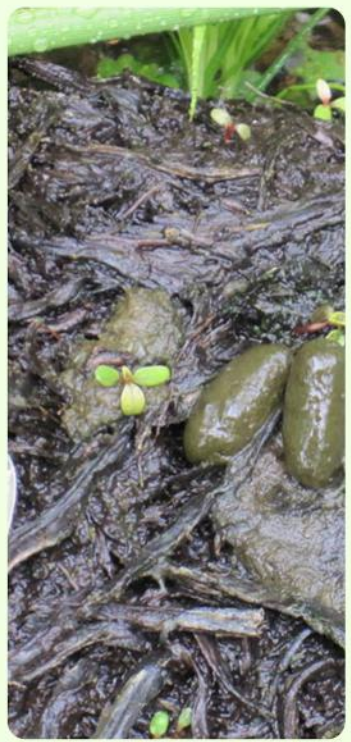


# MATCH THE POO (1) - ANSWERS





# MATCH THE POO (2)



# MATCH THE POO (2) - ANSWERS





# REPORT YOUR SIGHTINGS



If you have spotted some mammal poo, why not record and report your sightings?

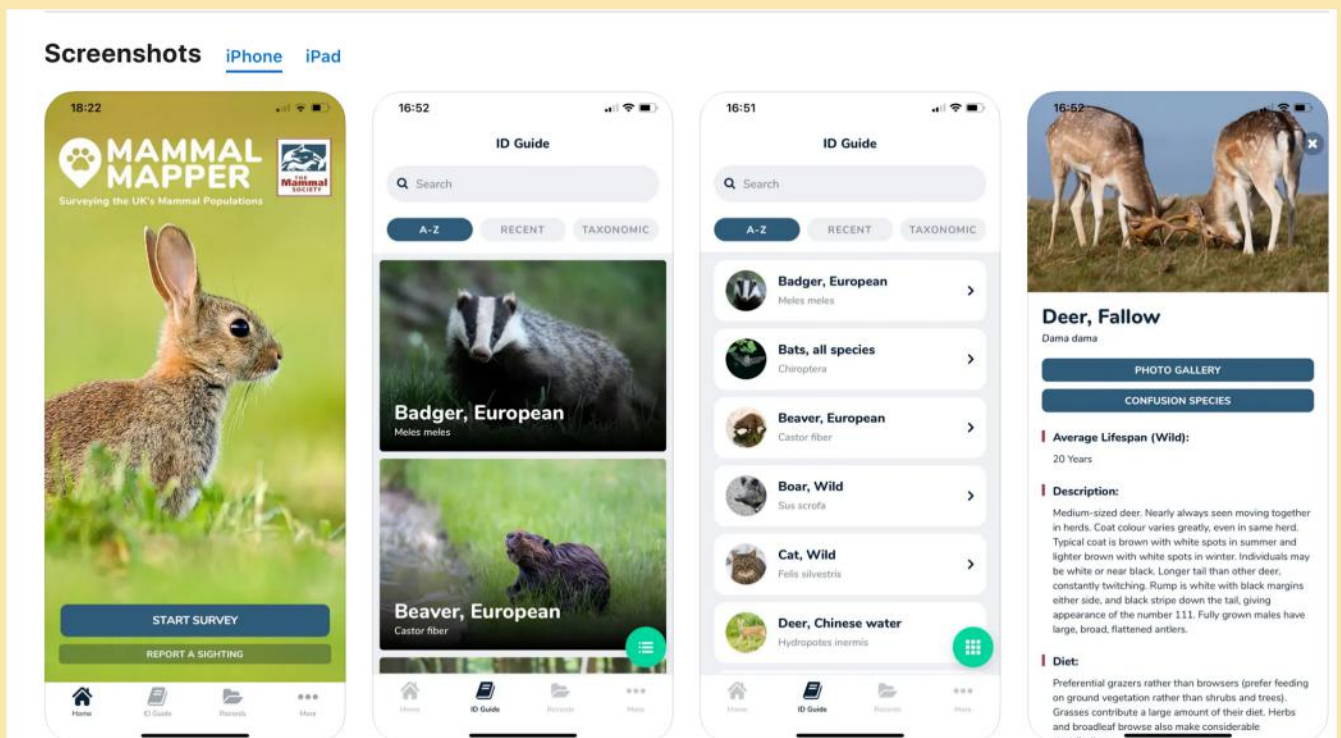
The Mammal Mapper App is an App designed to enable you to record signs and sightings of UK mammals. It is FREE to download to your smart phone from the App store or Google Play.

Use the App out on a walk or when you get home. You will build up a library of mammals you have spotted and you will contribute to mammal research and conservation.

The App is very easy to use. It guides you, step by step, on what you need to do.

You can record seeing a mammal or their field signs such as tracks and poo. Simply take a photo, find the mammal you think it belongs to, click "Droppings", check the date and location and upload. Our verifiers will do the rest!

[Click here](#) to read more about it on The Mammal Society website.



# Further Research



Click on these links to find out more about our fabulous UK wildlife.



**Mountain hare**

## **The Mammal Society: Full Species Hub**

The British Isles are home to around 90 species of mammal in the land, sea and air. Click on the hare photo to access the Hub and discover more about these mammals.

Click on this link to discover more resources and activities on the Mammal Youth Hub.



**Harvest mouse**

## **The Mammal Society: Mammal Youth Hub**

If you are a mini mammalogist or a teacher inspiring your class about the wonderful world of mammals, take a look at the resources on the Mammal Youth Hub! Click on the harvest mouse photo.

Click on this link to The Nature Collection.



**Hedgehog skull**

## **The Nature Collection**

If you want to learn more about all kinds of UK animals, looking in particular at their skulls and skeletons, click on the skull photo.