



# Smartstickx

All-in-One Adjustable Trekking Pole

## User Manual



**Electric  
Shock**



**LED  
Light**



**Power  
Bank**



**Fan**



**Solar Panel**



# CONTENT

- Information
- Product Overview
- Key Features
- How to Use
- Safety Guidelines
- Contact Information





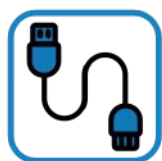
# Information



Built for Safety, Designed for Adventure!  
**TRAVEL ANYWHERE**

Thank you for choosing SmartstickX, the all-in-one high-tech trekking companion. Crafted from aircraft-grade aluminum, it's built to endure, protect, and perform.

## SmartstickX Includes:



USB  
Charging



LED  
Torch



Emergency  
Use



Electric  
Shock Proof

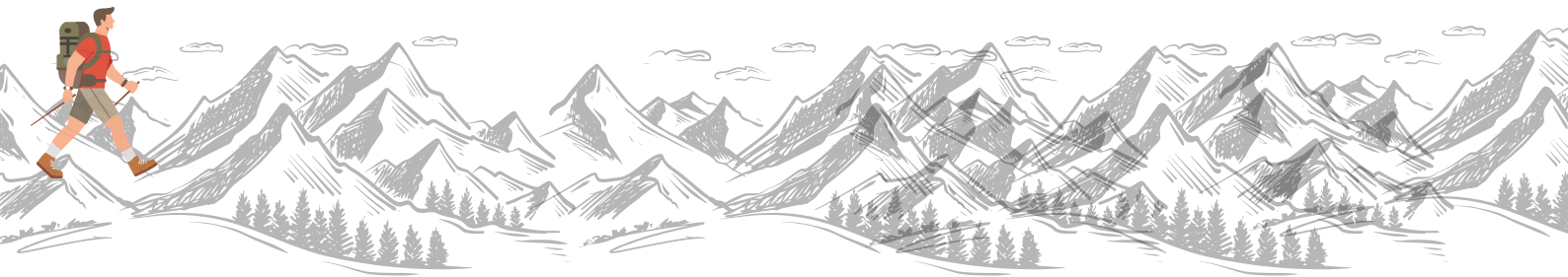


Solar  
Rechargeable



Adjustable  
Switch

This manual helps you operate, maintain, and maximize your SmartstickX experience.







# Product Overview

CLIMBING POLE HEIGHT	37 in	39 in	41 in	43 in	45 in
PROPOSED HEIGHT	59-61 in	61-61 in	63-65 in	65-67 in	67-70 in



32 In



45 In

## WITH INTERCHANGEABLE POLE ACCESSORIES:



NO  
TIP



1 RUBBER  
TIPS

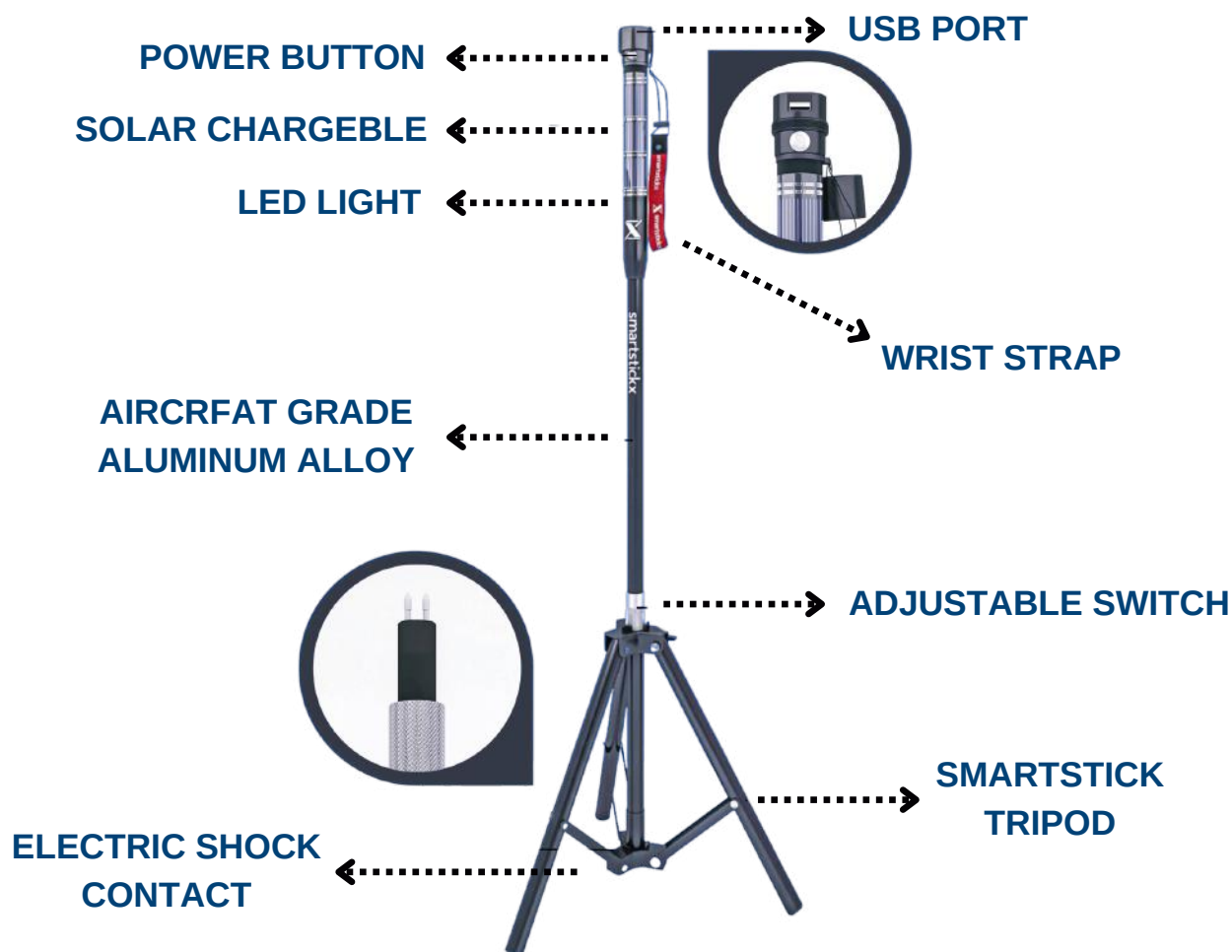


1 SNOW  
BASKETS





# KEY FEATURES



Electric Shock  
for Self-  
Protection



Smart Solar  
Panel with  
Indicator



LED Modes (White  
& Emergency) 2-  
10 hr



USB Charging  
Port - Never run  
out of battery



Mini Cooling fan for  
hot days





# HOW TO USE

- **Front Button = White LED / Hold = Emergency**
- **Back Button = Electric Shock (don't use with rubber tip)**
- **Open top cap to charge**
- **Twist to adjust length**
- **Screw snow basket (clockwise)**
- **Remove rubber tip to use tripod**
- **Charge fully before use (Red → Green)**
- **Questions? Email: [smartstickx1@gmail.com](mailto:smartstickx1@gmail.com)**

## PRODUCT SPECIFICATIONS :


PROPERTY	DETAILS
NAME	TREKKING STICK
BRAND	SMARTSICKX
LENGTH	32-46in
BATTERY CAPACITY	5600mA
TEXTURE	AIRCRAFT GRADE
WEIGHT	1.6 lbs
MATERIAL	AEROMETAL
PIPE DIAMETER	21mm / 33mm





# SAFETY GUIDELINES

To ensure safe and effective use of your SmartstickX All-in-One Adjustable Trekking Pole, please follow these instructions:

- 1 **Use Responsibly:** Always be mindful of your surroundings while using the stick.
- 2 **Pre-Use Inspection:** Check the pole for any visible defects or loose parts before each use.
- 3 **Secure All Components:** Ensure all sections and attachments are properly tightened and locked in place.
- 4 **Use as Intended:** Only use SmartstickX for its designed outdoor and safety functions.
- 5 **Proper Storage:** Store the stick and its accessories in the provided pouch after use.
- 6 **Do Not Use as a Weapon:** The stick is not designed for combative or aggressive purposes.
- 7 **Need Help?** For questions or support, contact us at:  
 [smartstickx1@gmail.com](mailto:smartstickx1@gmail.com)





# CONTACT INFORMATION

We're here to help you make the most of your SmartstickX experience. For product support, questions, or feedback, please reach out:



**smartstickx1@gmail.com**



**www.smartstickx.com**



**+1-800-555-STIX**



**SmartstickX Inc., 123 Explorer Avenue, Trail City, USA**

**Follow Us: @SmartstickX**







**Thank you for choosing SmartstickX — your smart, reliable,  
and adventure-ready trekking companion.**

**We wish you safe travels and unforgettable journeys!**



