

WILLIAM RAVEIS
REAL ESTATE • MORTGAGE • INSURANCE

98 W. Central Street, Natick



WILLIAM RAVEIS
BARBER REAL ESTATE GROUP
508.653.1256 | BarberRealEstateGroup.com





**MLS # 73471322 - New
Single Family - Detached**

**98 W Central St Natick, MA
01760 Middlesex County**

Style: **Cape**
Color:
Grade School: **Brown**
Middle School: **Kennedy**
High School: **NHS**
Approx. Acres: **0.21 (9,030 SqFt)**
Handicap Access/Features:
Directions: **Corner of Cemetery St**

List Price: **\$1,749,900**

Total Rooms: **12**
Bedrooms: **5**
Bathrooms: **4f 1h**
Main Bath: **Yes**
Fireplaces: **1**
Approx. Street Frontage:
Accessory Dwelling Unit: **No**

Welcome to this beautifully crafted new construction home just moments from the vibrant shops, dining, and charm of downtown Natick. Blending timeless architectural style and modern comfort, it offers inviting spaces to gather, work, and unwind across four generous levels, perfect for hosting guests and enjoying everyday living. Experience the excitement of the Boston Marathon passing by each April from your own front porch. Inside, hardwood floors flow through most of the home leading to a stunning chef's kitchen with a walk-in pantry and large eat-at island. A first-floor en-suite bedroom adds flexibility, while the second level features a luxurious primary suite, two additional bedrooms, and a bonus room. The lower level offers a private guest bedroom, and the walk-up attic a comfortable bonus room plus ample storage. With 4.5 baths, a two-car attached garage, and thoughtful details throughout, this exceptional home truly has it all. And, there's still time to pick your finishes!

Property Information

Approx. Living Area Total: **3,996 SqFt**
Approx. Above Grade: **3,003 SqFt**
Living Area Disclosures: **per architectural plan**

Living Area Includes Below-Grade SqFt: **Yes**
Approx. Below Grade: **993 SqFt**

Living Area Source: **Measured**

Heat Zones: **3 Forced Air, Gas**
Parking Spaces: **2 Off-Street, Paved Driveway**
Disclosures: **See spec sheet for construction detail and finishes.**

Cool Zones: **3 Central Air**
Garage Spaces: **2 Attached, Garage Door Opener**

Room Levels, Dimensions and Features

Room	Dining	Level	Size	Features	Flooring - Hardwood, Recessed Lighting	Fireplace, Flooring - Hardwood, Recessed Lighting	Flooring -
Room: Family		1	10X15	Hardwood, Pantry, Countertops - Stone/Granite/Solid, Kitchen Island, Recessed Lighting, Stainless Steel			
Room:		1	18X21	Appliances			
Kitchen:		1	13X17	Bathroom - Full, Closet - Walk-in, Closet, Flooring - Hardwood, Recessed Lighting			
				Closet, Flooring - Hardwood			
Main Bedroom:		2	15X17	Closet, Flooring - Hardwood			
Bedroom 2:		2	12X15	Bathroom - Full, Closet - Walk-in, Flooring - Hardwood			
Bedroom 3:		2	12X15	Closet - Walk-in, Flooring - Engineered Hardwood			
Bedroom 4:		1	12X15	Bathroom - Full, Bathroom - Tiled With Shower Stall, Flooring - Stone/Ceramic Tile			
Bedroom 5:		B	18X15	Bathroom - Full, Bathroom - Double Vanity/Sink, Bathroom - With Shower Stall, Flooring - Stone/Ceramic Tile, Soaking Tub			
Bath 1:		1		Bathroom - Full, Bathroom - Double Vanity/Sink, Bathroom - Tiled With Tub & Shower, Flooring - Stone/Ceramic Tile			
Bath 2:		2		Flooring - Stone/Ceramic Tile, Laundry Sink			
				Flooring - Hardwood, French Doors, Recessed Lighting			
Bath 3:		2		Flooring - Hardwood			
Laundry:		2		Flooring - Wall to Wall Carpet			
Office:		1	12X13	Flooring - Engineered Hardwood			
Loft:		2	12X12	Closet, Closet/Cabinets - Custom Built, Flooring - Stone/Ceramic Tile			
Bonus Room:		3	14X14	Bathroom - Full, Bathroom - Tiled With Shower Stall, Flooring - Stone/Ceramic Tile			
Play Room:		B	16X13				
Mud Room:		B	20X7				
Bathroom:		B					

Features

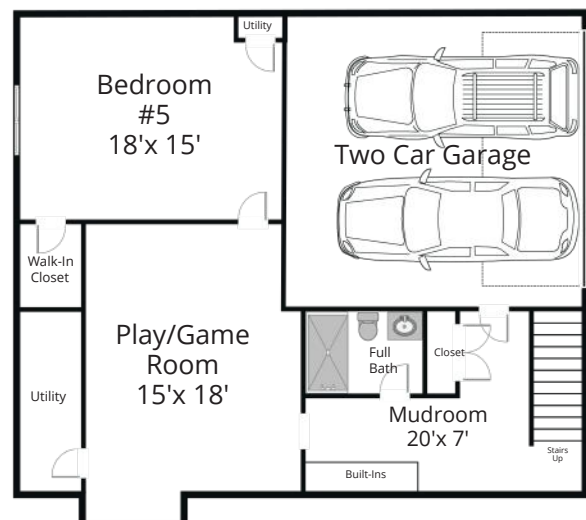
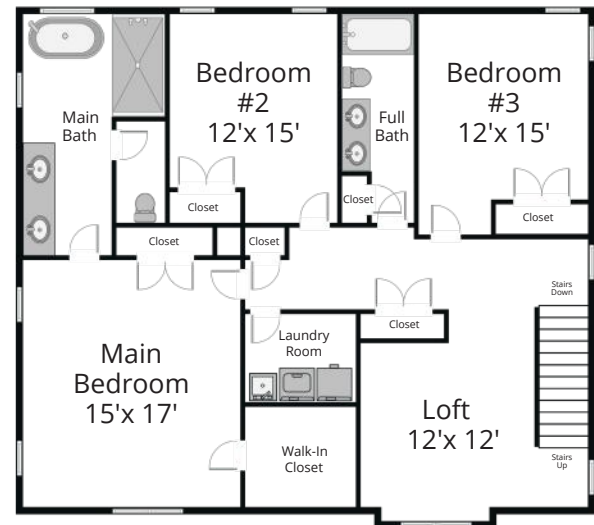
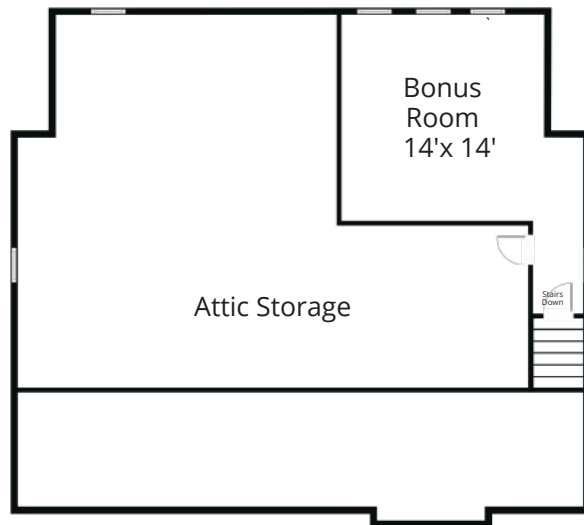
Appliances: **Range, Dishwasher, Disposal, Microwave, Refrigerator, Vent Hood**
Area Amenities: **Public Transportation, Shopping, Tennis Court, Park, Walk/Jog Trails, Golf Course, Medical Facility, Conservation Area, Highway Access, House of Worship, Public School, T-Station**
Basement: **Yes Full, Finished, Interior Access, Garage Access**
Beach: **Yes Lake/Pond**
Beach - Miles to: **1/2 to 1 Mile**
Construction: **Frame**
Electric: **Circuit Breakers**
Energy Features: **Insulated Windows, Insulated Doors, Prog. Thermostat**
Exterior: **Vinyl**
Exterior Features: **Porch, Patio, Gutters**
Flooring: **Tile, Wall to Wall Carpet, Hardwood**
Foundation Size:
Foundation Description: **Poured Concrete**
Hot Water: **Electric**
Insulation: **Full**
Interior Features: **Walk-up Attic**
Lot Description: **Corner, Paved Drive**
Road Type: **Public, Paved, Sidewalk**
Roof Material: **Asphalt/Fiberglass Shingles**
Sewer Utilities: **City/Town Sewer**
Water Utilities: **City/Town Water**
Waterfront: **No**

Other Property Info

Disclosure Declaration: **No**
Exclusions:
Home Own Assn:
Lead Paint: **None**
UFFI: Warranty Features:
Year Built: **2026** Source: **Builder**
Year Built Description: **Actual**
Year Round: **Yes**
Short Sale w/Lndr. App. Req: **No**
Lender Owned: **No**

Tax Information

Pin #: **M:00000042**
P:00000005
Assessed: **\$580,700**
Tax: **\$6,945** Tax Year: **2025**
Book: **84072** Page: **520**
Cert: **50502**
Zoning Code: **RSA**
Map: Block: Lot:



BARBER REAL ESTATE GROUP
508.653.1256
 Team@BarberRealEstateGroup.com
 BarberRealEstateGroup.com

98 WEST CENTRAL STREET
Natick, MA

These drawings are for marketing purposes only and all room sizes are approximate.

YourPlans MARKETING DRAWINGS (978) 580-1069

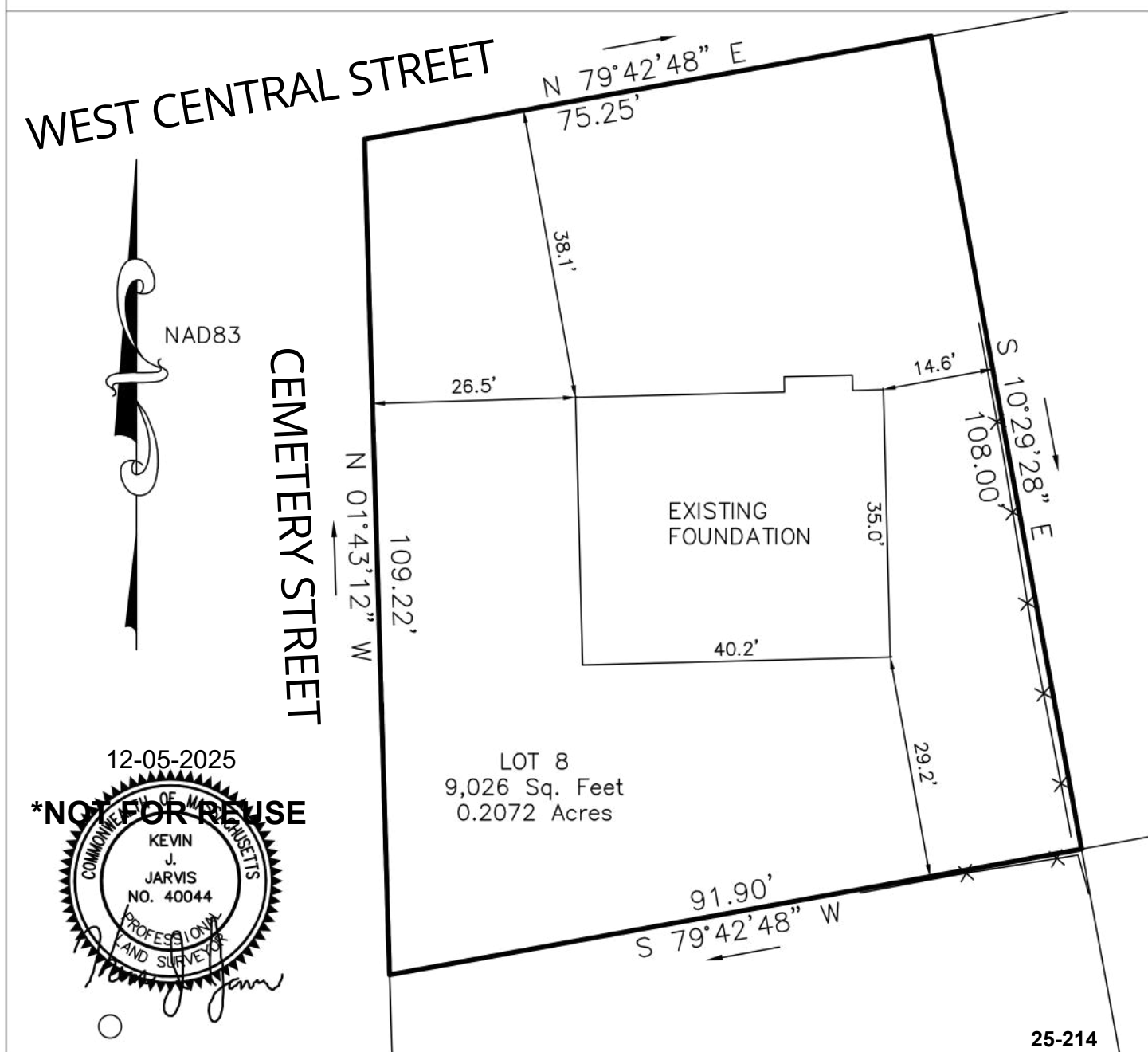
**PLAN SHOWING EXISTING FOUNDATION
PREPARED FOR
BRITTON BRADFORD
98 WEST CENTRAL STREET
NATICK, MASSACHUSETTS
DECEMBER 5, 2025
SCALE: 1 INCH = 20 FEET**

**JARVIS LAND SURVEY, INC
29 GRAFTON CIRCLE
SHREWSBURY, MA 01545
TEL. (508) 842-8087
FAX. (508) 842-0661
KEVIN@JARVISLANDSURVEY.COM**

*** THE SURVEYOR RETAINS COPYRIGHT TO THE PLAN OF
SURVEY, AND RE-USE OF THIS PLAN IS NOT ALLOWED
WITHOUT PERMISSION FROM THE SURVEYOR.**

1. THIS PLAN HAS BEEN PREPARED WITHOUT THE BENEFIT OF A TITLE REPORT AND IS SUBJECT TO THE FINDINGS SUCH A REPORT MIGHT DISCLOSE.
2. THIS PLAN HAS NOT BEEN PREPARED FOR RECORDING PURPOSES.
3. THE LICENSED MATERIAL CONTAINS VALUABLE PROPRIETARY INFORMATION BELONGING EXCLUSIVELY TO JARVIS LAND SURVEY, INC. THE LICENSED MATERIAL AND THE INFORMATION CONTAINED THEREON ARE COPYRIGHTED INSTRUMENTS OF PROFESSIONAL SERVICES AND SHALL NOT BE USED, IN WHOLE OR IN PART, FOR ANY PROJECT OTHER THAN THAT FOR WHICH THEY WERE CREATED, WITHOUT THE EXPRESS WRITTEN CONSENT OF JARVIS LAND SURVEY, INC. **YOU AGREE NEVER TO REMOVE ANY NOTICES OF COPYRIGHT, NOR TO REPRODUCE OR MODIFY THE LICENSED MATERIAL.**

**ASSESSORS MAP 42
LOT 5**



98 W Central LLC– Full Spec List

Faucets/Fixtures/Plumbing

All Faucets and Fixtures to be Kohler – See Brochure

Basement Bath – 1 Faucet, 1 Toilet, Shower with fixed head

1st Floor Full Bath – 1 Faucet, 1 toilet, 1 tub/shower combo with fixed head

1st Floor Powder Bath – 1 faucet, 1 toilet

Kitchen – 1 faucet, 1 garbage disposal, 1 water line for refrigerator

2nd Floor Bath – 2 faucets, 1 toilet, 1 tub/shower combo with fixed shower head

Primary Bath – 2 faucets, 1 free standing tub with deck mount faucet, shower with 1 rain head, 1 main head and spray handle

2nd Floor Laundry – 1 connection for washing machine

2 Exterior Hose Bibs per code

1 Natural Gas Power Vent, 75-gallon Hot Water heater – manufacturer TBD

1 Natural Gas Fireplace on 1st floor – Heatilator or similar

Toilets - Comfort Height with Soft Close Seats

Sinks for Lavs - Provided by Graite Fabricator

Appliances

36" Natural gas range with chimney hood above, 36" free standing fridge, dishwasher, drawer microwave
See Full Specs and models in separate document, OR allowance of \$14,500 to Yale Appliance

Lighting Fixtures & Electric

Allowance with Ferguson for surface/ceiling/wall mount includes the following:

- 7 Lavatory Fixtures over sink
- 6 Center Light, ceiling mount, in bedrooms/3rd floor
- 7 Ceiling Mount, low profile for remaining common areas and/or rooms
- 4 recessed in Primary Bedroom blocked for ceiling fan in center



Barber Real Estate Group

BarberRealEstateGroup.com
BarberRealEstate@raveis.com

- 4 recessed in Study – included in sales price
- 5 recessed around Kitchen – included in sales price
- 2 recessed hallway/foyer - included in sales price
- 5 recessed in dining/living room – included in sales price
- 1 Dining Room Chandelier
- 2 Kitchen Island pendants
- 1 exterior over garage door
- 1 exterior at back slider
- 1 exterior at front porch
- \$5,000 allowance

Recessed lights supplied and installed by electrician – 20 included in purchase price see above for recommended locations.

Undercabinet LED lighting included in purchase price

Keyless lights included in garage, storage areas or mechanical rooms – included in purchase price

Closets will have LED lighting – included in purchase price

220AMP service - included in purchase price

Phone and Cable runs supplied and installed. One each per bedroom, study and living room included.

Outlets installed per code locations - included

Cabinetry

See attached layout plan and 3D view. White Shaker finish. Manufacturer TBD. Cabinet Pulls TBD

Kitchen and Bath Tops

Allowance; \$14,000 with Homebuilders Supplier

Quartz Kitchen Countertops (Quartz/Pencil Edge)

Undermount Stainless Steel Kitchen Sink - Sink Large Single

Quartz Full Height backsplash

Quartz primary, jack & jill, Laundry, bath 4, PR (Quartz promo/Pencil Edge) with Quartz 4" Backsplash
Undermount Sinks included - Rectangle



Barber Real Estate Group

BarberRealEstateGroup.com
BarberRealEstate@raveis.com

Flooring

Daltile (tile) throughout, Allowance is \$4,500

Includes Tile to ceiling on all showers or tub/shower combo.

Tile Locations included:

- All Baths
- Basement mudroom
- Laundry

Hardwood is 3.5" prefinished, red oak, color is TBD. Includes locations:

- Throughout 1st floor, excluding baths
- Bedrooms throughout 2nd floor
- Primary bedroom
- 2nd floor hallway
- 2nd floor loft

Carpet allowance is \$2,500 includes:

- Stairs to 3rd floor
- 3rd floor living area

Exterior Finishes/Materials

Driveway Paved asphalt binder and top coat

Concrete walkway front door to driveway, steps may be required due to grading

Paver Patio 10' X 10' at deck off slider

Garage Doors Insulated, style TBD

Vinyl Siding

30 Year Architectural Shingles

Gutters and Downspouts Where applicable

Foundation Poured concrete, waterproofed with perimeter drain and insulated drainage mat

Windows and Exterior Doors are all Pella



Barber Real Estate Group

BarberRealEstateGroup.com
BarberRealEstate@raveis.com

Windows Vinyl double hung and casements per plan

Water Spigots 2 total, placed in front and rear

Landscaping package including planting beds with plants, fully hydroseed coverage remaining lot. Final design is TBD and subject to plant availability and time of year. Allowance of \$14,500.

Interior General Finishes

Walls/Ceilings Smooth sheetrock wall and ceilings throughout.

Ceiling Height 9' first floor / 8' second floor and basement

Doors are raised molding with 2 panel, solid doors throughout and closets hollow

Hardware is brushed nickel, Kwikset throughout

Paint with flat finish. Walls have 1 color throughout and white baseboards with trim

Mirrors 24" X 30" white framed mirror over each sink

Primary Shower enclosure will be frameless shower glass. Basement Shower will not have enclosure.

Shelving allowance of \$3500

- Closets
- Pantry
- Laundry

HVAC

- Natural Gas Forced Air, 2 units. 1 in the unfinished attic, 1 in the basement
- 3 zones included

Unfinished Attic

- The attic has been framed per the Architects plan and is included in the price
- The space will be insulated and weather tight
- The attic can be finished and will be priced appropriately depending on requested finishes of buyer and/or changes to the layout



Barber Real Estate Group

BarberRealEstateGroup.com
BarberRealEstate@raveis.com

SKSGR360S
36-INCH GAS PRO RANGE WITH
6 BURNERS



Innovation

Wi-Fi Enabled for ThinQ® Control with iPhone / Android App	Yes
Remote Operations	Yes
Remote Monitoring	Yes
Cooktop Features	
Number of Burners	6
Continuous Grates	3
Wok (On Front Burners)	Yes
Heating Element "ON" Indicator Light	
LED Power Level Display	Yes
	Yes

POWER-UP OR SIMMER DOWN Two Ultra-High™ Burners deliver 23K BTUs of pure cooking power for great searing and quick stir frying. Two Ultra-Low™ Burners simmer down to maintain temperatures as low as 100° to prepare delicate sauces and sugary confections.

SPEEDCLEAN®

Makes fast work of cleaning a lightly-soiled oven with just a ten minute cycle, using only water.

BUILT-IN WOK GRATE

The three front burner grates are convertible for round-bottom wok cooking. Stir fry at home with professional-style results.

SMART KNOBS™

Each burner has a dedicated Smart Knob™ featuring a large, illuminated display that makes it easy to read from across the room. Smart Knobs™ include a Wi-Fi function that let you see if the burner is on or off using the ThinQ® app.

Cooktop Performance

Simmer – Max. BTU/h (NG)	
Left Rear	310 – 15,000
Center Rear	1,300 – 15,000
Right Rear	310 – 10,000
Left Front	650 – 23,000
Center Front	1,300 – 15,000
Right Front	650 – 23,000



S KS FD3 623 S D

36-INCH COUNTER-DEPTH FRENCH DOOR REFRIGERATOR

SIGNATURE
KITCHEN SUITE



BUILT-IN STYLE, FULL-SIZE CAPACITY

Large 26 cu. ft. capacity with the sleek built-in look of a Counter-Depth French Door Refrigerator.

4 TYPES OF ICE INCLUDING CRAFT ICE®

Enjoy 4 types of ice.¹ Touch the dispenser on the door to get cubed or crushed ice in an instant. Two additional ice makers in the freezer produce mini cubed ice and our exclusive slow-melting, round Craft Ice®. Craft Ice® helps all kinds of beverages taste their best for longer, from craft cocktails² to soft drinks to iced coffee. A generous supply of mini cubed ice is the perfect answer for filling water bottles or delivering a quick chill.

SMART COOLING® PLUS SYSTEM

The Smart Inverter Compressor and Single Evaporator reacts quickly to temperature levels to help keep food fresher, longer.

COOL GUARD

Together with its charcoal gray inside, the Cool Guard metal interior panel adds a premium look.

WI-FI-ENABLED

With ThinQ® technology, you can control your refrigerator from a smartphone, monitor energy usage and get important alerts.

Style

Counter-Depth	Yes
Door-in-Door®	No

Innovation

Wi-Fi-Enabled for ThinQ® Control with iPhone / Android App	Yes
Remote Operations	Yes
Smart Inverter Compressor	Yes
Craft Ice®	Yes (In Freezer)
Mini Cubed Ice	Yes (In Freezer)

Performance

Single Evaporator	Yes
Modes	Ice Plus, Icemaker On / Off, Temp Control, Water Filter Reset, Smart Diagnosis, Wi-Fi, Smart Grid, Sabbath
Water Filter (6 Months)	Yes

Capacity and Storage

Total Capacity (cu. ft.)	25.
Refrigerator Capacity (cu. ft.)	5
Freezer Capacity (cu. ft.)	16.
Refrigerator	8
Storage Shelves	4.7Adjustable, 1 Fixed
Fresh Filters	Yes
Folding Shelf	Yes
Shelf Construction	Spill Protector™ Tempered Glass
Crisper Bins	2
Glide N' Serve® Drawer with Digital Controls	Yes

¹ Craft Ice®, Cubed Ice, Mini Cubed Ice, Crushed Ice

² You must be of legal drinking age to drink alcoholic beverages. Please drink responsibly.

© 2024 Signature Kitchen Suite. All rights reserved. Design, features and specifications are subject to change without notice. Specifications are for planning purposes only. Consult the product's installation instructions for final dimensional data and other details prior to making cutouts or custom panels. Consult with a heating and ventilation engineer for your specific ventilation requirements. Non-metric weights and measurements are approximate. Smart features require Internet access.

1-855-790-6655 | www.signaturekitchensuite.com

SKSMD2401S

MICROWAVE OVEN DRAWER

SIGNATURE
KITCHEN SUITE



1.2 CU. FT. OVEN CAPACITY 1.2 cu. ft. capacity is designed to provide plenty of room to heat large items like casserole dishes and dinner platters.

EASY TOUCH AUTOMATIC DRAWER

The Easy Touch Automatic Drawer system eases open with a gentle pull or the touch of a button. Give the drawer a small nudge and it smoothly shuts for you. The even, gliding action and solid construction prevents liquids from spilling during opening and closing.

SMOOTHTOUCH™ GLASS CONTROLS

Intuitive SmoothTouch™ Glass Controls not only look sleek but make operating the microwave drawer easy with just a touch. The seamless controls are also easy to wipe clean.

INSTALLATION FLEXIBILITY

Flexible installation options include below an island or peninsula and in standard cabinetry. A heat deflector kit is included for flush or true flush installation for an integrated, streamlined look.

Features

Capacity Power	1.2 cu. ft.
Output Sensor	900 W
Cooking Drawer	Yes
Opening	Easy Touch Automatic
Lighting	Incandescent

Cooking Menu

Display Type	SmoothTouch™ Glass Touch
Power Levels	11
Sensor Touch Cooking / Reheat Options	12 (Baked Potatoes, Sweet Potatoes, Fish / Seafood, Brown Rice, White Rice, Quick Fresh Vegetables, Longer Fresh Vegetables, Steamer Bag, Frozen Vegetables, Ground Meat, Frozen, Beverage Reheat)
Defrost Options	6 (Ground Meat, Steaks/Chops, Boneless Poultry, Bone-in Poultry, Roast, Casserole/Soup)
Minute Plus™	Yes
Stop/Clear, Start/Enter	Yes
Completion Beeper	Yes
Energy Saving Mode	Yes (Dims Display After 3 Minutes of Inactivity)
Kitchen Timer/Clock	Yes
Child Safety Lock	Yes

PCHBL636SS


Wall-mount Chimney Hood

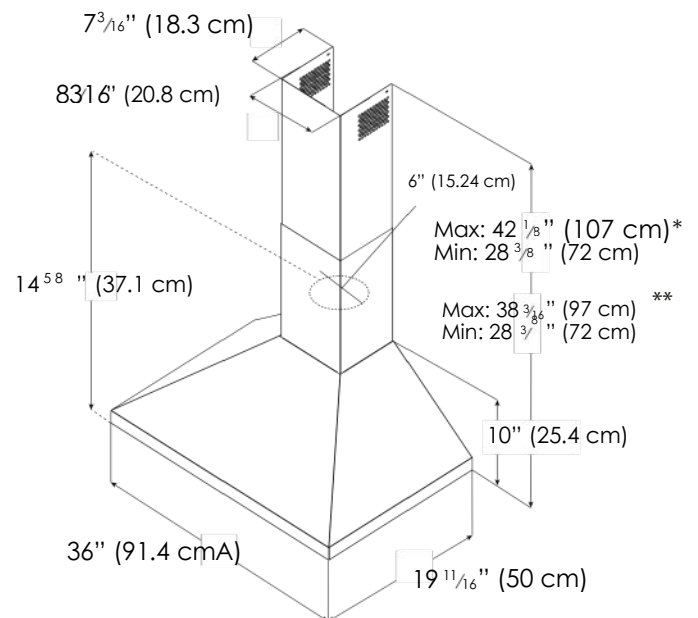
YALE
APPLIANCE



This model, with its pyramid shaped angles and stainless steel finish, makes a striking visual statement to any kitchen. Available in 36", features Black panel touch controls, LED lighting and 3-speed blower. It also features a telescopic chimney for up to 9'1" ceilings. Designed for standard ducted installation it can also be installed as a recirculating system using the kit available as an accessory.

MOUNTING HEIGHT RANGE

 
≥ 24" ≥ 30"



*Ductless version (recirculating)

**Ducted version

SKSDW2401S

POWERSTEAM® STAINLESS STEEL DISHWASHER

SIGNATURE
KITCHEN SUITE



POWERSTEAM® TECHNOLOGY

PowerSteam Technology offers maximum steam coverage for 60% less water spots,* resulting in the most sparkling clean dishes.

LODECIBEL™ QUIET OPERATION (40 dBA)

Signature Kitchen Suite dishwashers are among the quietest on the market, so you can enjoy a powerful clean—without disrupting your day.

LED INTERIOR LIGHTING

LED lighting illuminates the interior, while Signalight™ Cycle Indicator Lights let you know the status of the cycle.

EASY LOADING AND MAXIMUM FLEXIBILITY

The EasyRack™ Plus system provides outstanding flexibility and convenience, adjusting to just about any load of dishes to help ensure optimal cleaning performance. The height adjustable 3rd rack provides more space and flexibility to fit virtually everything from flatware to wine glasses.

WI-FI ENABLED FOR SMART CONTROL

Monitor cycle status, get notifications when a cycle is completed, and download and use specialized dishwasher cycles—all from a mobile device using the ThinQ™ app.

Innovation

Wi-Fi Enabled for ThinQ® Control with iPhone / Android App	Yes
Remote Monitoring	Yes

Performance

PowerSteam® Technology	Yes	Yes	Yes
QuadWash™ System	40 dBA 3 (Top, Middle, Bottom)		
Inverter Direct Drive™ Technology	Upper, Lower		
LoDecibel™ Quiet Operation			
Number of Spray Arms	Yes		
	Yes		
SenseClean™ Wash System	Yes		
Vario Wash	Yes		
Hidden Water Heater	Yes		
3-Stage Filtration System			
Hybrid Condensing Drying System			

Features

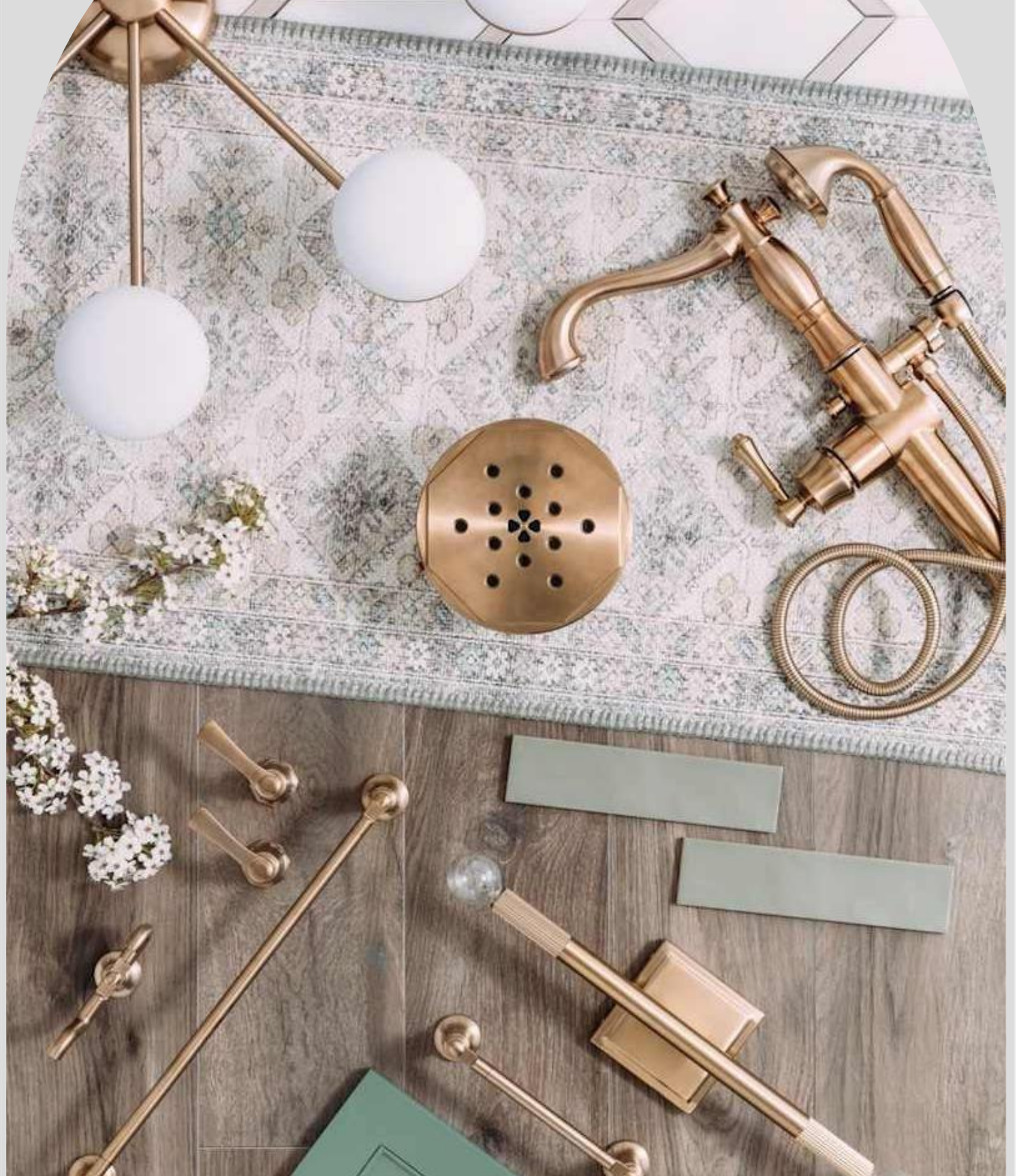
Number of Wash Cycles	10 (Auto, Heavy, Delicate, Refresh, Normal, Turbo, Download Cycle, Machine Clean, Rinse, Express)		
Number of Options	9 (Dual Zone, Half Load, Energy Saver, Steam, High Temp, Extra Dry, Delay Start, Control Lock, Night Dry)		
End of Cycle Indicator			
Beeper + END Indication on Display			
Detergent and Rinse-Aid Dispenser	Yes		
Tub Light	Yes		

* Percent in water spot reduction compared to comparable non-steam dishwasher on delicate wash cycle. Results may vary by model. Results based on testing with non-steam dishwasher LDF7774ST as of Feb 2018.

© 2023 Signature Kitchen Suite. All rights reserved. Design, features and specifications are subject to change without notice. Specifications are for planning purposes only. Consult the product's installation instructions for final dimensional data and other details prior to making cutouts or custom panels. Consult with a heating and ventilation engineer for your specific ventilation requirements. Non-metric weights and measurements are approximate. Smart features require Internet access.

1-855-790-6655 | www.signaturekitchensuite.com





#FERGUSON HOME

LIGHTING: 98 W Central St Natick, MA
Britton bradford

Primary Bath



Minka Lavery 4003-84
Antonia 3 Light 25" Wide Vanity Light
with Clear Glass Shades
Finish: Brushed Nickel
Qty: 2

Second Bath



Millennium Lighting 9232-BN

Ashli 2 Light 14" Wide Vanity Light
with Patterned Glass Shades

Finish: Brushed Nickel

Qty: 2

First Floor Bath



Millennium Lighting 8122-BN

Aliza 2 Light16" WideVanityLight

Finish: Brushed Nickel

Qty: 1

Powder Bath



Millennium Lighting 9233-BN

Ashli 3 Light 20" Wide Vanity Light
with Patterned Glass Shades

Finish: Brushed Nickel

Qty: 1

Basement Mudroom Bath



Millennium Lighting 9752-BN

2Light 16" Wide Bathroom Vanity
Light

Finish: Brushed Nickel

Qty: 1

Kitchen/Dining



Millennium Lighting 20201-PN

Barlon 14"Wide Pendant

Finish: Polished Nickel

Qty: 2



Millennium Lighting 9915-BN

Chastine 5Light 24"WideChandelier

Finish: Brushed Nickel

Qty: 1

Ceiling Mount Low Profile



RP Lighting and Fans 4350-1WH-4K-15

Dobbins 15"WideFlushMount

Ceiling Fixture

Finish: White

Qty: 7

Outdoor Lighting



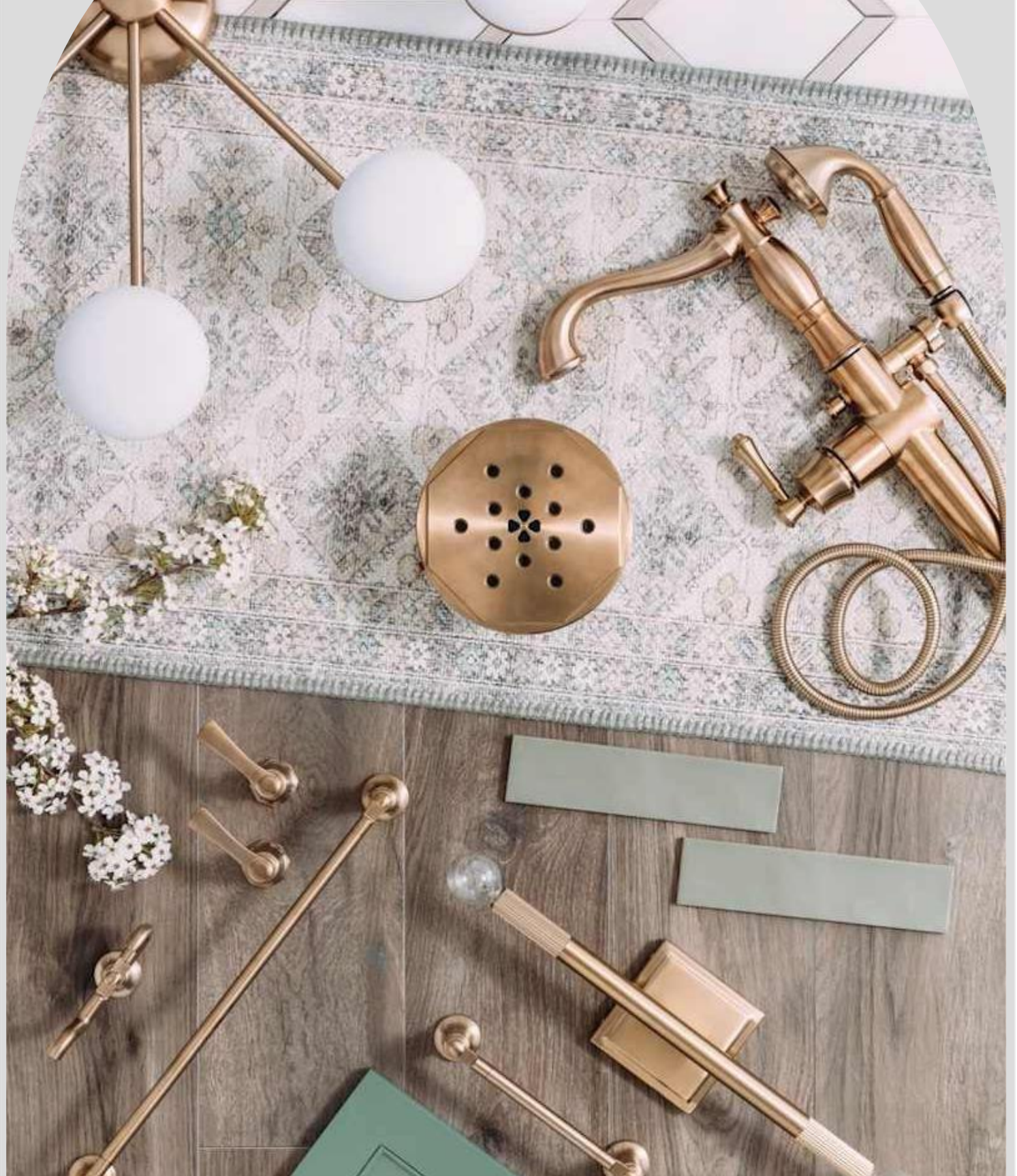
Millennium Lighting RWHS17-RGN15-SB

RLM 1 Light Outdoor Wall Sconce
with 17" Warehouse Shade and 14.5"
Gooseneck Stem
Finish: Satin Black
Qty: 1



Millennium Lighting 42652-PBK

Devens 18" Tall Outdoor Wall Sconce
Finish: Powder Coat Black
Qty: 2



#FERGUSON HOME

98 W Central St Natick, MA
Britton bradford

fergusonhome.com

Basement Mud Room



Kohler K-35952-4-BN

Buckley 1.2GPM Single Hole
Bathroom Faucet
Finish: Vibrant Brushed Nickel
Qty: 1



Kohler K-8304-KS-NA

Rite-Temp Pressure Balanced Valve
Body and Cartridge Kit with Service
Stops
Finish: N/A
Qty: 1



Kohler K-TS35938-4G-BN

Buckley Shower Only Trim Package
with 1.75 GPM Single Function
Shower Head
Finish: Vibrant Brushed Nickel
Qty: 1



Kohler K-26077-0

Kingston ComfortHeight Complete
Solution Two-Piece Elongated 1.28
GPF Toilet Includes Quiet-Close
Toilet Seat
Finish: White
Qty: 1

Powder Bath



Kohler K-35952-4-BN

Buckley 1.2GPM Single Hole
Bathroom Faucet

Finish: Vibrant Brushed Nickel

Qty: 1



Kohler K-26077-0

Kingston ComfortHeight Complete
Solution Two-Piece Elongated 1.28
GPF Toilet Includes Quiet-Close
Toilet Seat

Finish: White

Qty: 1

First Floor Bath



Kohler K-35952-4-BN
Buckley 1.2GPM Single Hole
Bathroom Faucet
Finish: Vibrant Brushed Nickel
Qty: 1



Kohler K-8304-KS-NA
Rite-Temp Pressure Balanced Valve
Body and Cartridge Kit with Service
Stops
Finish: N/A
Qty: 1



Kohler K-TS35938-4G-BN
Buckley Shower Only Trim Package
with 1.75 GPM Single Function
Shower Head
Finish: Vibrant Brushed Nickel
Qty: 1



Kohler K-26077-0
Kingston ComfortHeight Complete
Solution Two-Piece Elongated 1.28
GPF Toilet Includes Quiet-Close
Toilet Seat
Finish: White
Qty: 1

Second Floor Bath



Kohler K-35952-4-BN
Buckley 1.2GPM Single Hole
Bathroom Faucet
Finish: Vibrant Brushed Nickel
Qty: 2



Kohler K-8304-KS-NA
Rite-Temp Pressure Balanced Valve
Body and Cartridge Kit with Service
Stops
Finish: N/A
Qty: 1



Kohler K-TS35937-4G-BN
Buckley Tub and Shower Trim
Package with 1.75 GPM Single
Function Shower Head
Finish: Vibrant Brushed Nickel
Qty: 1



Kohler K-26108-LA-0
Entity 60"x32" ThreeWall Alcove
Acrylic Soaking Tub with Left Drain
Finish: White
Qty: 1



Jones Stephens B51037
Two-Hole Trip Lever Tub Drain Trim
Kit with Overflow
Finish: Brushed Nickel
Qty: 1



Kohler K-26077-0
Kingston ComfortHeight Complete
Solution Two-Piece Elongated 1.28
GPF Toilet Includes Quiet-Close
Toilet Seat
Finish: White
Qty: 1

Primary Bath



Kohler K-35953-4-BN

Buckley 1.2GPM Widespread Bathroom Faucet
Finish: Vibrant Brushed Nickel
Qty: 2



Kohler K-8304-KS-NA

Rite-Temp Pressure Balanced Valve Body and Cartridge Kit with Service Stops
Finish: N/A
Qty: 1



Kohler K-TS35938-4G-BN

Buckley Shower Only Trim Package with 1.75 GPM Single Function Shower Head
Finish: Vibrant Brushed Nickel
Qty: 1



Kohler K-728-K-NA

MasterShower 2-or3-way Transfer Valve (Shared Function)
Finish: N/A
Qty: 1



Kohler K-T35954-4-BN

Buckley Deck-Mount Bath Faucet Trim
Finish: Vibrant Brushed Nickel
Qty: 2



Kohler K-301-K-NA

Devonshire 3/4 inch High-Flow Valve System
Finish: na
Qty: 2



Kohler K-24002-0

Sunstruck 60" Soaking Bathtub for Freestanding Installations with Center Drain
Finish: White
Qty: 1



Signature Hardware SH653PVC

Freestanding Tub Drain Rough In Kit for PVC Pipe
Finish: N/A
Qty: 1



Kohler K-26077-0

Kingston Comfort Height Complete Solution Two-Piece Elongated 1.28 GPF Toilet Includes Quiet-Close Toilet Seat
Finish: White
Qty: 1

Kitchen



Kohler K-596-VS

Simplice 1.5GPM Single Hole Pull
Down Kitchen Faucet - Includes
Escutcheon

Finish: Vibrant Stainless

Qty: 1



Kohler K-28901-NA

Buckley 32-1/4" Undermount Single
Basin Stainless Steel Kitchen Sink

Finish: Stainless Steel

Qty: 1



About B&B Development

B&B Development was founded on the principle of building homes with original designs and unique architecture. They set out to build quality crafted homes that fit the lifestyle of today's homeowners. With a focus on open floor plans, incredible kitchens, and efficient layouts, the homes impress from the moment you walk in.

B&B Development believes that using the right materials and the right people will deliver a home that will remain outstanding for years to come.

About Britton Bradford

Britton Bradford is the owner and founder of B&B Development, a home building company known for quality craftsmanship and thoughtful design. He earned a Bachelor of Science in Construction Management from Oklahoma State University in 2006 and brings nearly two decades of industry experience to every project.

Before launching B&B Development, Britton worked with multiple Fortune 500 homebuilders, gaining extensive experience in large-scale residential construction, project management, and quality control. He has over a decade of hands-on residential building experience in Massachusetts. This regional expertise gives him deep familiarity with local building codes, coastal conditions, and architectural styles. Today, Britton leads each project with a hands-on, client-focused approach, delivering homes built for durability, functionality, and long-term value.



WILLIAM RAVEIS
BARBER REAL ESTATE GROUP
508.653.1256 | BarberRealEstateGroup.com

ANNA BORELLI

REAL ESTATE AGENT

Barber Real Estate Group/William Raveis

Anna@BarberRealEstateGroup.com

Anna.Borelli@raveis.com

617-921-5955

Facebook.com/AnnaBorelliRealEstate

Instagram – annaborelli_realtorma



Anna Borelli – Sales Associate

Anna has been a full-time real estate agent since 2001 and is proudly servicing the MetroWest area of Boston, which is where she also currently lives.

While Anna's successful business is mainly based on repeat customers and referrals from prior clients, friends and family, something which she does not take for granted, she greatly enjoys helping new customers as well.

Anna's natural Scandinavian calm gives you a steady guide throughout the home buying and selling process. In Sweden, there's a word that is used quite often that we all strive for; 'Lagom' meaning it's just right, the perfect fit and balance. If you hear Anna say that this house is 'Lagom', then it's the perfect

match for you!



WILLIAM RAVEIS
BARBER REAL ESTATE GROUP
508.653.1256 | BarberRealEstateGroup.com





NATICK, MASSACHUSETTS

ABOUT NATICK

*SmallTown Charmandra
Tight-Knit Community*

This wonderful community, with its history and character offers small town appeal, but with a quick commute into Boston it is growing quickly, and considered a wonderful place to settle in..... while you still can.

A blend of old-world charm and modern construction, Natick offers a balanced variety of public services, shopping facilities and entertainment, it also has a newer built public high school and is home to many private schools.

There are also plenty of things to do and see around town like The Center For Arts, Broadmoor Wildlife Sanctuary, Natick Community Organic Farm, Sassamon Trace golf course, Memorial Beach and The Natick Common - that hosts a farmers market every Saturday year-round. We have classic Holiday town parades, and the Boston Marathon route runs through our very special town.

With two commuter rail stops, and quick access to the major arteries out of town, the commute to the big city is only minutes away. While that is all convenient, of course, we love it here at home, and aren't always in a rush to leave. Welcome home!



WILLIAM RAVEIS
BARBER REAL ESTATE GROUP
508.653.1256 | BarberRealEstateGroup.com





ANNA BORELLI
real estate agent

Anna@BarberRealEstateGroup.com
617-921-5955

Facebook.com/AnnaBorelliRealEstate
Instagram - annaborelli_realtorma

