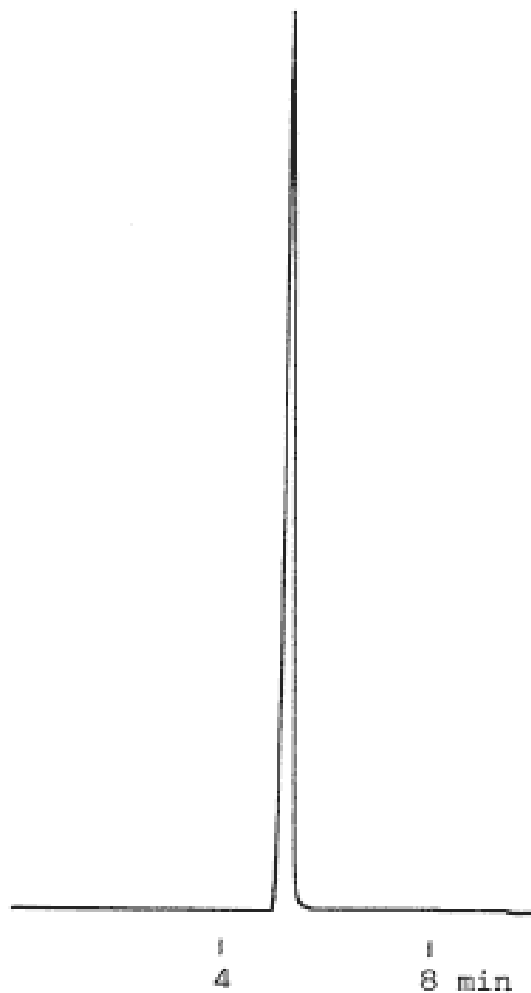


# InertSearch™ for LC

Inertsil® Applications

## Imazalil

Data No. LA288-0000



Column : Inertsil ODS-3  
5 $\mu$ m  
150  $\times$  4.6mm I.D.

Solutes : 1. Imazalil

Column Cat. No. : 5020-13001

Eluent : CH<sub>3</sub>CN/10mM NaH<sub>2</sub>PO<sub>4</sub>=60/40

Flow rate : 1.0 mL/min.

Col. Temp. : 40°C

Detection : UV 230 nm

Injection Vol. :

Sample : Imazalil