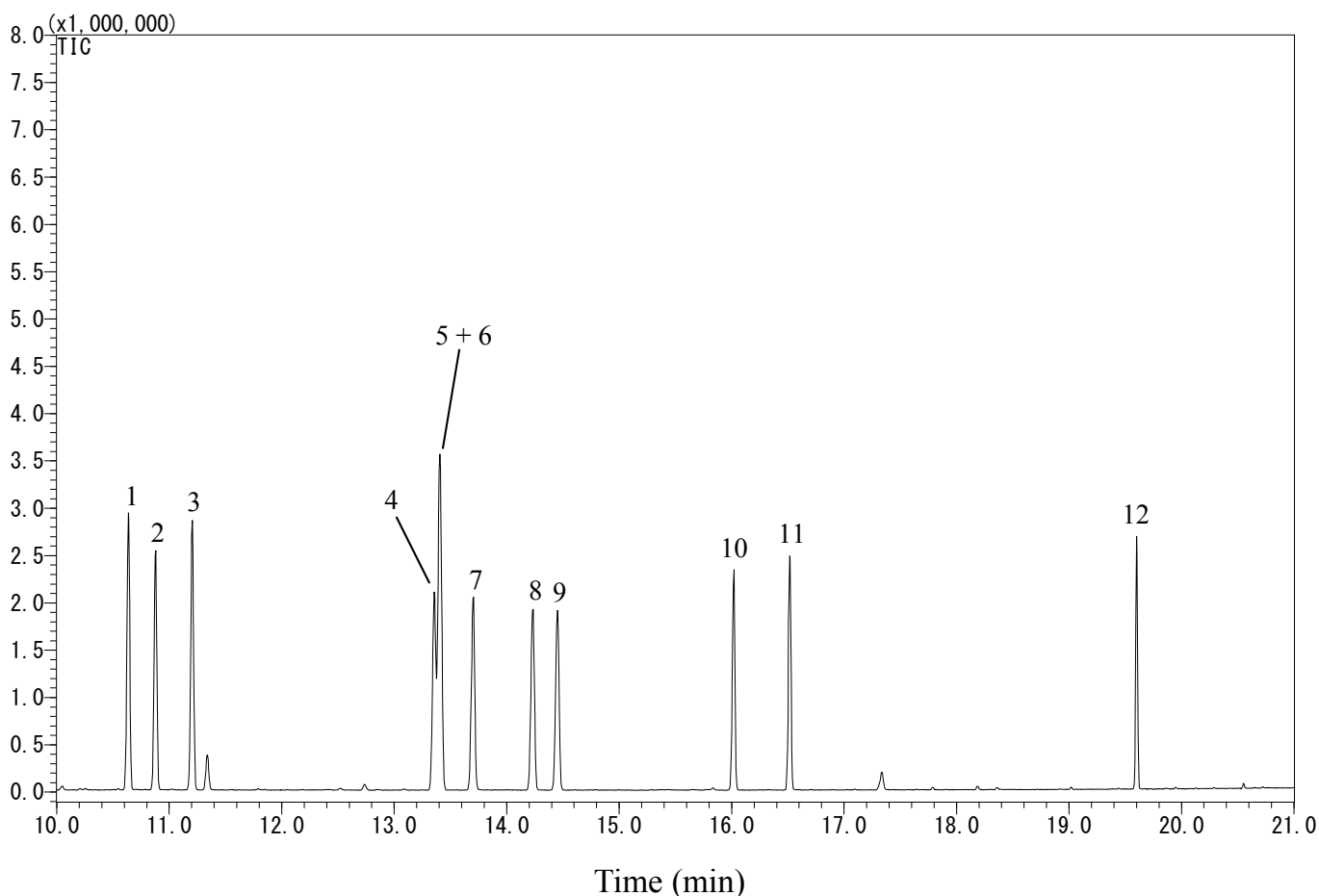


## Chlorophenols

Data No. GA 258-0644



### Conditions

**System** : GC-MS  
**Column** : InertCap 5MS/Sil  
0.25 mm I.D. x 30 m df = 0.25 µm  
**Col. Cat. No.** : 1010-18642  
**Col. Temp.** : 40 °C (1 min hold) - 10 °C/min - 120 °C  
- 5 °C/min - 150 °C - 20 °C/min  
- 280 °C (5 min hold)  
**Carrier Gas** : He 36.1 cm/s  
**Injection** : Splitless 1min  
250 °C  
**Detection** : MS Scan (*m/z* 35 - 450)  
Interface Temp. 280 °C  
**Sample Size** : 10 µg/mL in Acetone  
1 µL

**Analyte** :

1. 2-Chlorophenol
2. 3-Chlorophenol
3. 4-Chlorophenol
4. 2,5-Dichlorophenol
5. 2,6-Dichlorophenol
6. 3,5-Dichlorophenol
7. 2,4-Dichlorophenol
8. 2,3-Dichlorophenol
9. 3,4-Dichlorophenol
10. 2,4,6-Trichlorophenol
11. 2,3,6-Trichlorophenol
12. Pentachlorophenol  
(TMS Deriv. by BSTFA)