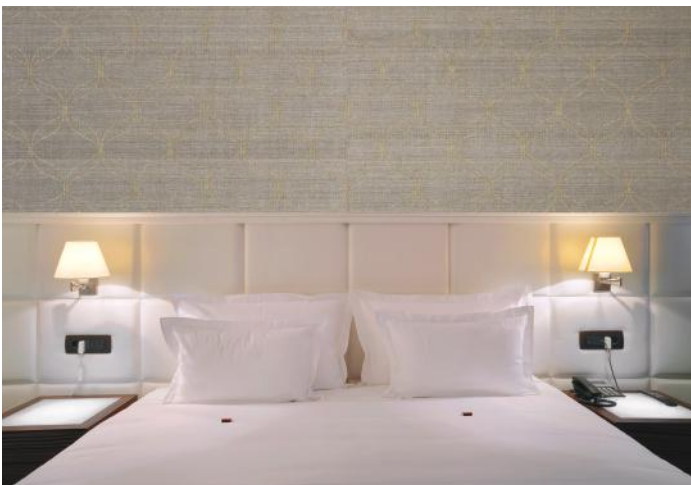


tapetex

wall materials

67

nonwoven



Maestro



67-1650



67-1651



67-1652



67-1653



67-1654



67-1655



67-1656



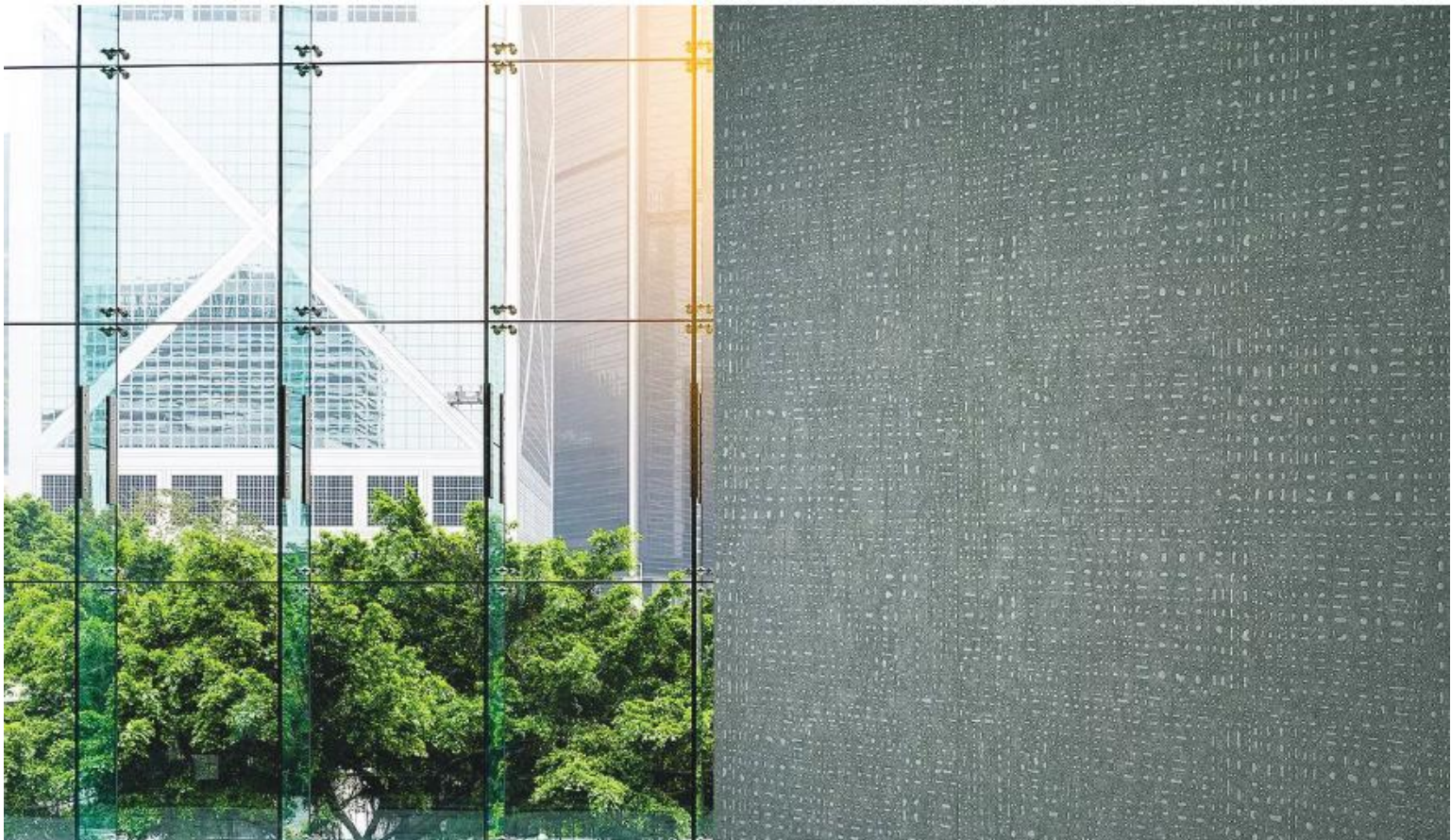
67-1657



67-1658



67-1659



SPECIFICATION : **MAESTRO 67-1650/-1659**, a multi-layer quality
Collection : 10 colours from Tapetex-67-Nonwoven

Physical properties

Composition : 60% FSC certified woodpulp, reinforced with 40% polyester.
Backing : Paper backing of 70% FSC certified woodpulp reinforced with 30% polyester.
Width : 137 cm = 54"
Weight : Approx. 470 gr/lm = 15.2 oz/lyd
Thickness : Approx. 0.80 mm
Hanging : Random
Use a rubber roller instead of a spatula.
Precision trimmed for butt-joining by professional paper hangers.
Installation advice supplied with every roll.
Adhesive : Adhesive Tapetex PRO-1 or similar premixed heavy duty, clear vinyl adhesive, suitable for textile wallcovering.
Variation : There can be a variation between sample material and finished product. Stock cuttings are available for approval.

Performance : See detailed results on our website.

Surface finish : A stain repellent finish prevents waterbased splashes penetrating and staining the material.
Periodic vacuuming is recommended to prevent dust from building up on the materials surface.
Lightfastness : Test result as per ISO 105-B02:2014, Heraeus original Hanau Xenotest.
LRV values : Testing as per BS 8493:2008+A1:2010, Datacolor DC500.
Fire rating : ASTM E84 Class 1 or A and EUROCLASS (B s1 d0).
Permeability rating : Test result 35.0 as per ASTM E96-12, Method B, Water Vapor Transmission.
Indoor air quality : ASTM D6196, D5197 and D5116, Environmental Chamber Test.
The testing followed UL 2821 "Greenguard Certification Program Method for Measuring and Evaluating Chemical Emissions".
REACH SVHC : Compliant as per Centexbel testing.
DoP No. : (CPR 305/2011), DOP-CPR-01

Sustainability

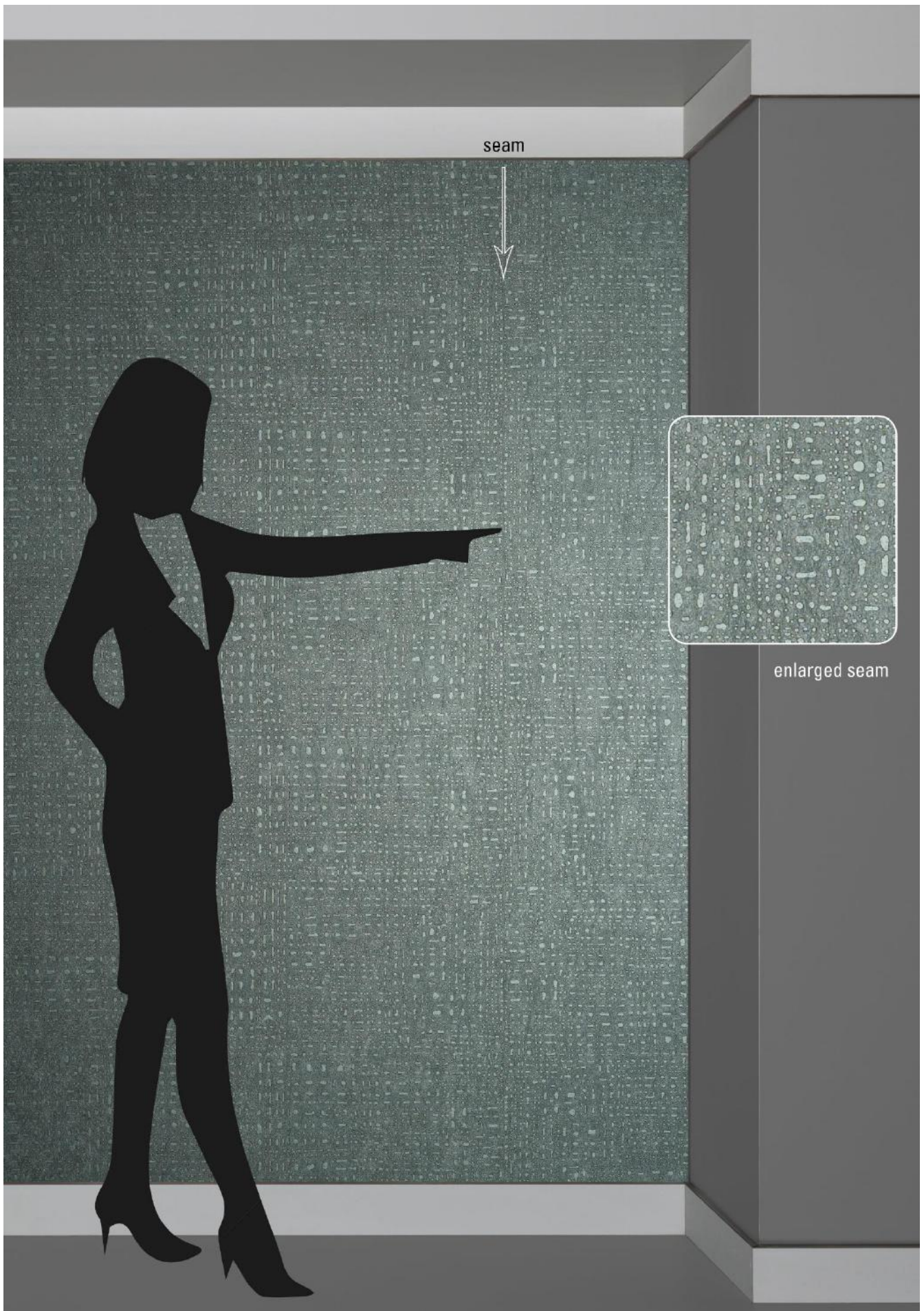
The nonwoven is FSC certified, FSC A000531.
In production, all energy sources are either green, wind or hydro based and all processes are waterbased. The products do not contain PVC, chlorine, plasticizers, heavy metals or harmful dyes.

Supply and packing

Delivery from stock by the full linear meter or full linear yard. The average piece length of this quality is approx. 50 linear meter or 55 linear yards. However, as is common within the textile industry, it is not possible to establish a standard roll length. The wallcovering is reeled on to a cardboard core, wrapped in polyethylene and protective end caps are fixed. Each roll is then packed in individual cardboard boxes or tubes, which are also made out of FSC certified woodpulp.

Harmonized System as per the World Customs Organization and Origin

Textile Wallcovering, paper backed: 5905.00. Made in the Netherlands.





Tuscany



67-1660



67-1661



67-1662



67-1663



67-1664



67-1665



67-1666



67-1667



67-1668



67-1669

SPECIFICATION : **TUSCANY 67-1660/-1669**, a one-layer quality
Collection : 10 colours from Tapetex-67-Nonwoven

Physical properties

Composition : 70% FSC certified woodpulp, reinforced with 30% polyester.
Width : 137 cm = 54"
Weight : Approx. 220 gr/lm = 7.1 oz/lyd
Thickness : Approx. 0.40 mm
Hanging : Random
Precision trimmed for butt-joining by professional paper hangers.
Installation advice supplied with every roll.
Adhesive : Adhesive Tapetex PRO-1 or similar premixed heavy duty, clear vinyl adhesive, suitable for textile wallcovering.
Variation : There can be a variation between sample material and finished product.
Stock cuttings are available for approval.

Performance : See detailed results on our website.

Surface finish : A stain repellent finish prevents waterbased splashes penetrating and staining the material.
Periodic vacuuming is recommended to prevent dust from building up on the materials surface.
Lightfastness : Test result as per ISO 105-B02:2014, Heraeus original Hanau Xenotest.
LRV values : Testing as per BS 8493:2008+A1:2010, Datacolor DC500.
Fire rating : ASTM E84 Class 1 or A and EUROCLASS (B s2 d0).
Permeability rating : Test result 93.8 as per ASTM E96-12, Method B, Water Vapor Transmission.
Indoor air quality : ASTM D6196, D5197 and D5116, Environmental Chamber Test.
The testing followed UL 2821 "Greenguard Certification Program Method for Measuring and Evaluating Chemical Emissions".
REACH SVHC : Compliant as per Centexbel testing.
DoP No. : (CPR 305/2011), DOP-CPR-01

Sustainability

The nonwoven is FSC certified, FSC A000531.
In production, all energy sources are either green, wind or hydro based and all processes are waterbased. The products do not contain PVC, chlorine, plasticizers, heavy metals or harmful dyes.

Supply and packing

Delivery from stock by the full linear meter or full linear yard.
The average piece length of this quality is approx. 100 linear meter or 110 linear yards. However, as is common within the textile industry, it is not possible to establish a standard roll length.
The wallcovering is reeled on to a cardboard core, wrapped in polyethylene and protective end caps are fixed. Each roll is then packed in individual cardboard boxes or tubes, which are also made out of FSC certified woodpulp.

Harmonized System as per the World Customs Organization and Origin

Textile Wallcovering, paper backed: 5905.00. Made in the Netherlands.



Montresor



67-1670



67-1671



67-1672



67-1673



67-1674



SPECIFICATION : **MONTRESOR 67-1670/-1674**, a multi-layer quality
Collection : 5 colours from Tapetex-67-Nonwoven

Physical properties

Composition : 60% FSC certified woodpulp, reinforced with 40% polyester.
Backing : Paper backing of 70% FSC certified woodpulp reinforced with 30% polyester.
Width : 137 cm = 54"
Weight : Approx. 440 gr/lm = 14.2 oz/lyd
Thickness : Approx. 0.60 mm
Hanging : On repeat, W6.5 cm - 2.6"
Use a rubber roller instead of a spatula.
Precision trimmed for butt-joining by professional paper hangers.
Installation advice supplied with every roll.
Adhesive : Adhesive Tapetex PRO-1 or similar premixed heavy duty, clear vinyl adhesive, suitable for textile wallcovering.
Variation : There can be a variation between sample material and finished product. Stock cuttings are available for approval.

Performance : See detailed results on our website.

Surface finish : A stain repellent finish prevents waterbased splashes penetrating and staining the material.
Periodic vacuuming is recommended to prevent dust from building up on the materials surface.
Lightfastness : Test result as per ISO 105-B02:2014, Heraeus original Hanau Xenotest.
LRV values : Testing as per BS 8493:2008+A1:2010, Datacolor DC500.
Fire rating : ASTM E84 Class 1 or A and EUROCLASS (B s1 d0).
Permeability rating : Test result 35.0 as per ASTM E96-12, Method B, Water Vapor Transmission.
Indoor air quality : ASTM D6196, D5197 and D5116, Environmental Chamber Test.
The testing followed UL 2821 "Greenguard Certification Program Method for Measuring and Evaluating Chemical Emissions".
REACH SVHC : Compliant as per Centexbel testing.
DoP No. : (CPR 305/2011), DOP-CPR-01

Sustainability

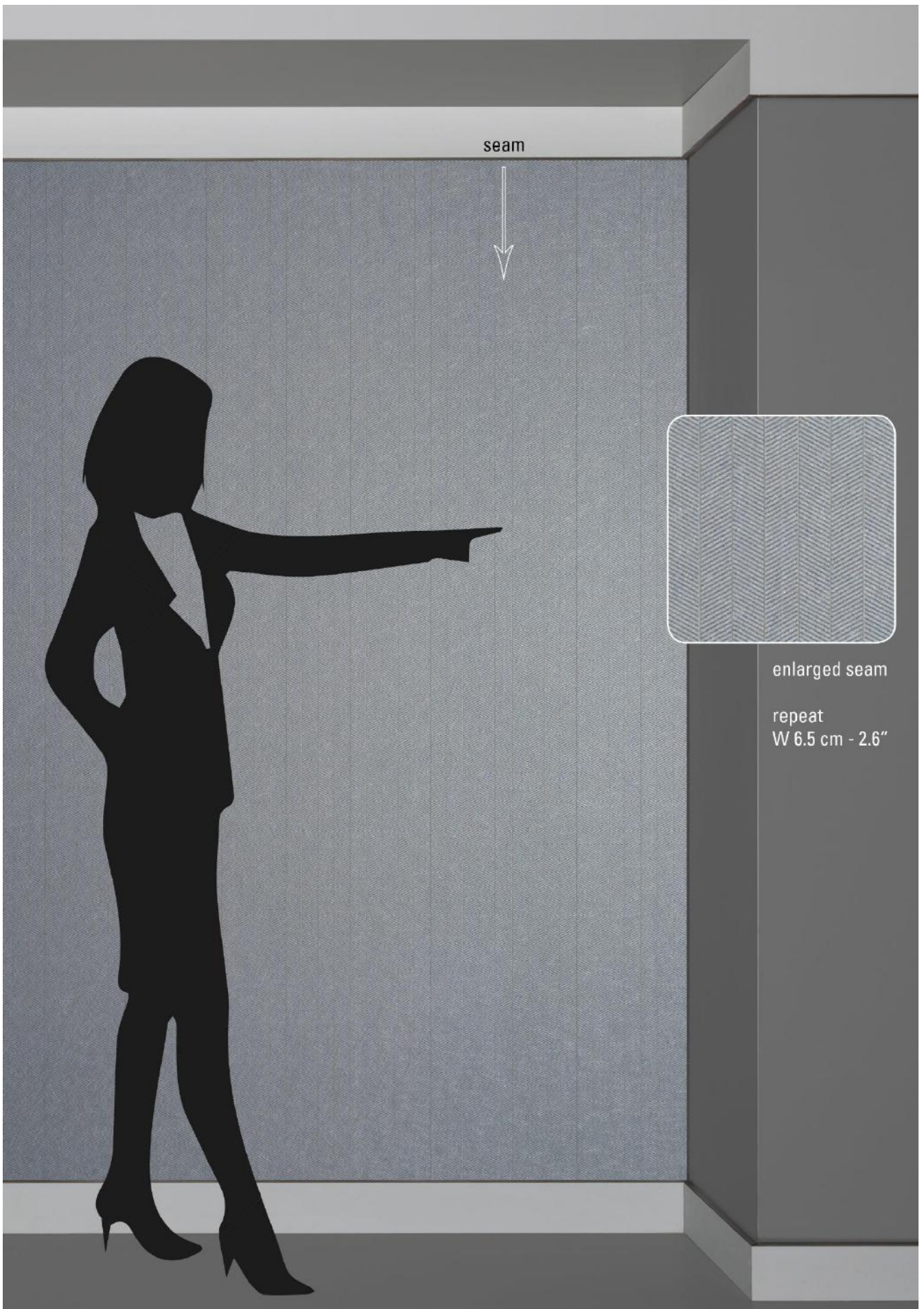
The nonwoven is FSC certified, FSC A000531.
In production, all energy sources are either green, wind or hydro based and all processes are waterbased. The products do not contain PVC, chlorine, plasticizers, heavy metals or harmful dyes.

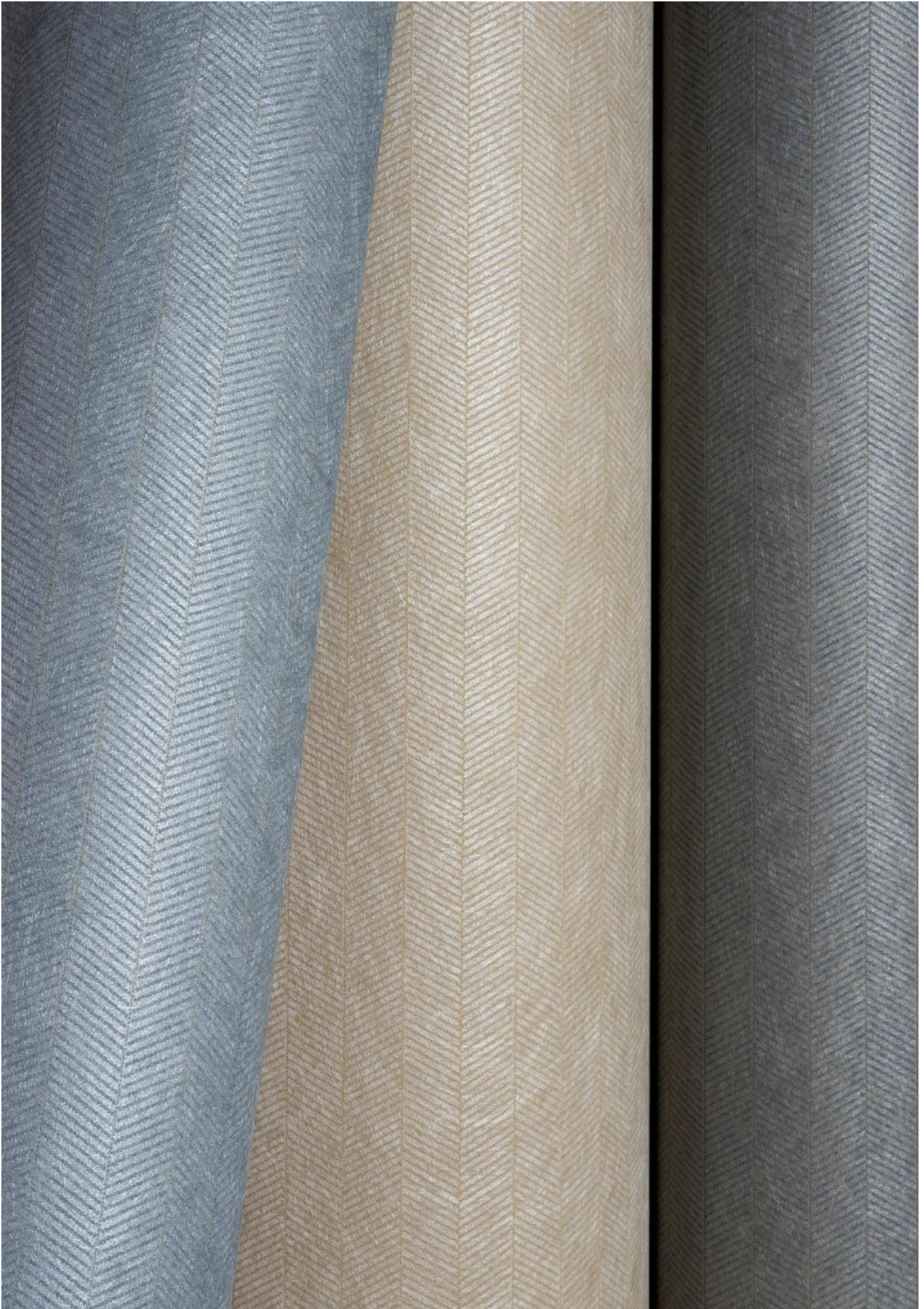
Supply and packing

Delivery from stock by the full linear meter or full linear yard. The average piece length of this quality is approx. 50 linear meter or 55 linear yards. However, as is common within the textile industry, it is not possible to establish a standard roll length. The wallcovering is reeled on to a cardboard core, wrapped in polyethylene and protective end caps are fixed. Each roll is then packed in individual cardboard boxes or tubes, which are also made out of FSC certified woodpulp.

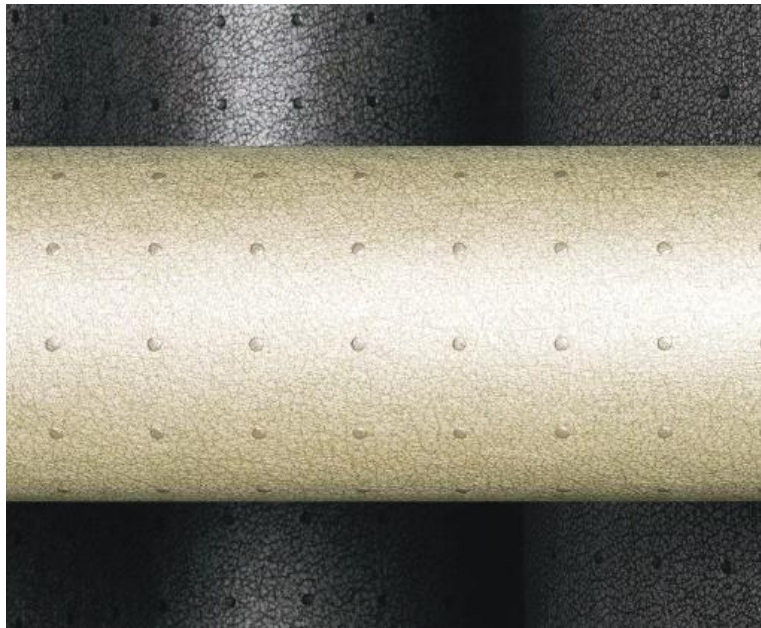
Harmonized System as per the World Customs Organization and Origin

Textile Wallcovering, paper backed: 5905.00. Made in the Netherlands.





Kai



67-1680



67-1681



67-1682



67-1683



67-1684



SPECIFICATION : **KAI 67-1680/-1684**, a one-layer quality
Collection : 5 colours from Tapetex-67-Nonwoven

Physical properties

Composition : 70% FSC certified woodpulp, reinforced with 30% polyester.
Width : 137 cm = 54"
Weight : Approx. 220 gr/lm = 7.1 oz/lyd
Thickness : Approx. 0.40 mm
Hanging : On repeat, H2.9 cm - 1.1" W2.9 cm - 1.1".
Use a rubber roller instead of a spatula.
Solid colours see Fenda 67-1800/67-1809.
Precision trimmed for butt-joining by professional paper hangers.
Installation advice supplied with every roll.
Adhesive : Adhesive Tapetex PRO-1 or similar premixed heavy duty, clear vinyl adhesive, suitable for textile wallcovering.
Variation : There can be a variation between sample material and finished product.
Stock cuttings are available for approval.

Performance : See detailed results on our website.

Surface finish : A stain repellent finish prevents waterbased splashes penetrating and staining the material.
Periodic vacuuming is recommended to prevent dust from building up on the materials surface.
Lightfastness : Test result as per ISO 105-B02:2014, Heraeus original Hanau Xenotest.
LRV values : Testing as per BS 8493:2008+A1:2010, Datacolor DC500.
Fire rating : ASTM E84 Class 1 or A and EUROCLASS (B s2 d0).
Permeability rating : Test result 93.8 as per ASTM E96-12, Method B, Water Vapor Transmission.
Indoor air quality : ASTM D6196, D5197 and D5116, Environmental Chamber Test.
The testing followed UL 2821 "Greenguard Certification Program Method for Measuring and Evaluating Chemical Emissions".
REACH SVHC : Compliant as per Centexbel testing.
DoP No. : (CPR 305/2011), DOP-CPR-01

Sustainability

The nonwoven is FSC certified, FSC A000531.

In production, all energy sources are either green, wind or hydro based and all processes are waterbased. The products do not contain PVC, chlorine, plasticizers, heavy metals or harmful dyes.

Supply and packing

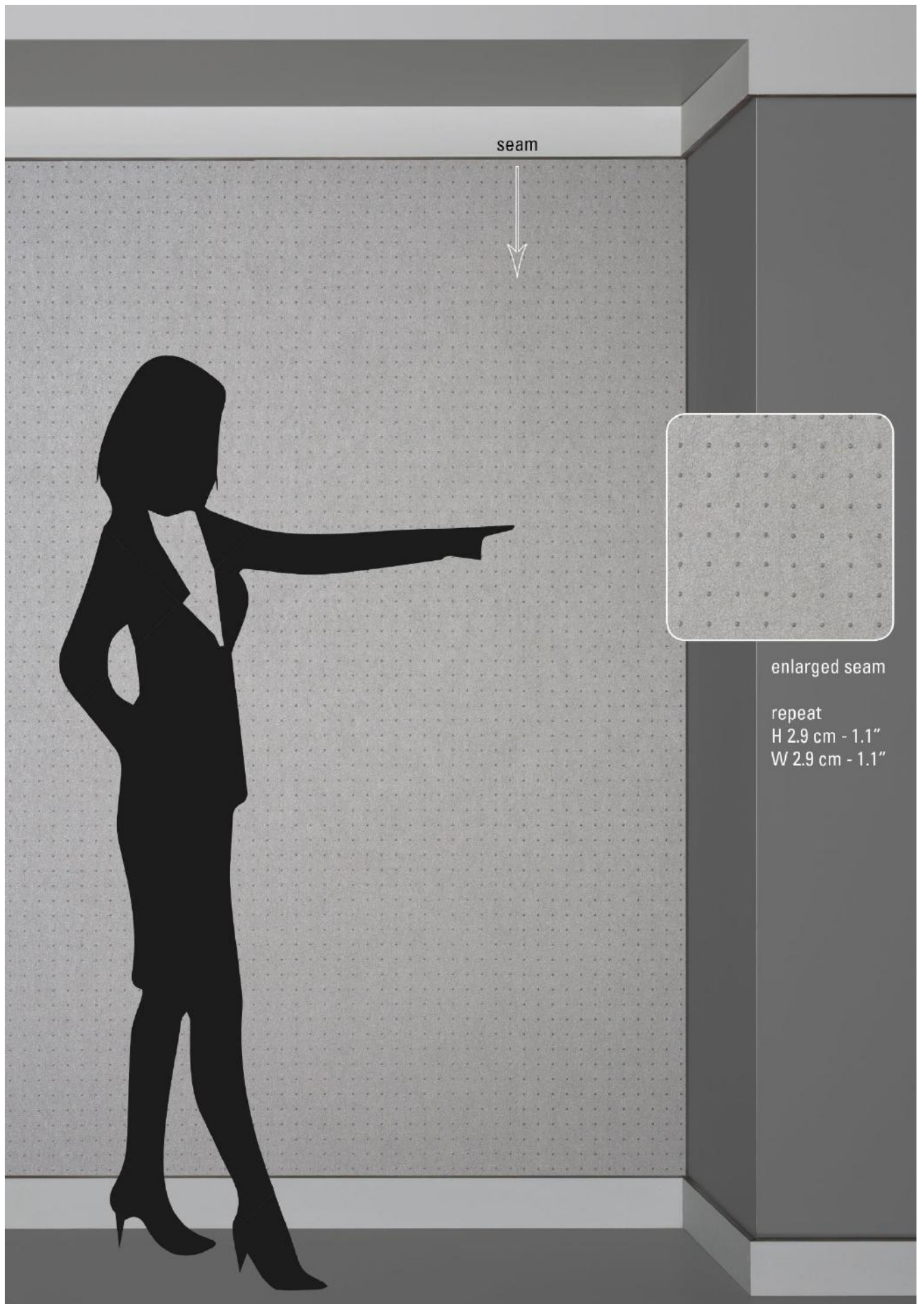
Delivery from stock by the full linear meter or full linear yard.

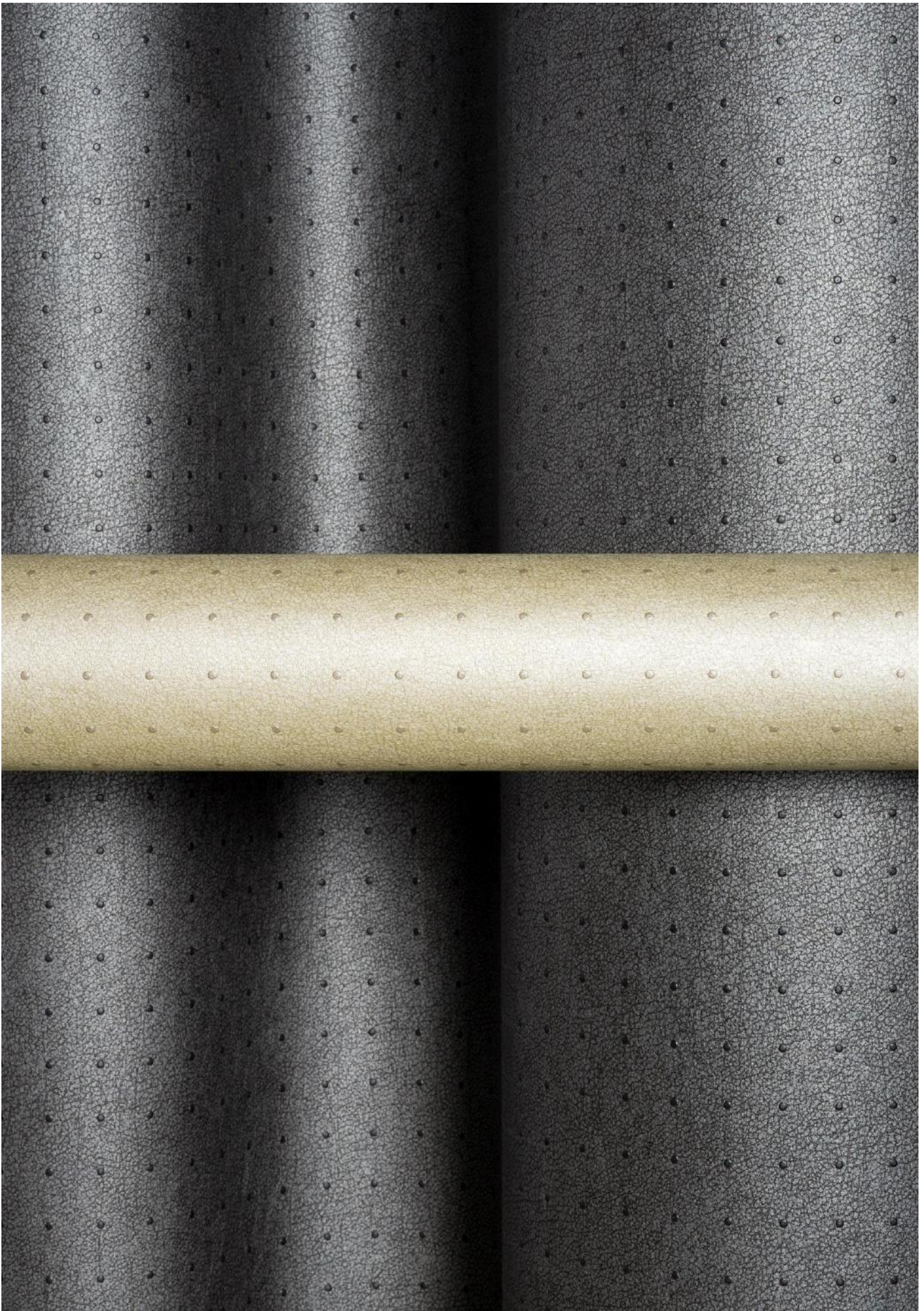
The average piece length of this quality is approx. 50 linear meter or 55 linear yards. However, as is common within the textile industry, it is not possible to establish a standard roll length.

The wallcovering is reeled on to a cardboard core, wrapped in polyethylene and protective end caps are fixed. Each roll is then packed in individual cardboard boxes or tubes, which are also made out of FSC certified woodpulp.

Harmonized System as per the World Customs Organization and Origin

Textile Wallcovering, paper backed: 5905.00. Made in the Netherlands.





Bora



67-1690



67-1691



67-1692



67-1693



67-1694



67-1695



67-1696



67-1697



67-1698



67-1699

SPECIFICATION : **BORA 67-1690/-1699**, a one-layer quality
Collection : 10 colours from Tapetex-67-Nonwoven

Physical properties

Composition : 70% FSC certified woodpulp, reinforced with 30% polyester.
Width : 137 cm = 54"
Weight : Approx. 220 gr/lm = 7.1 oz/lyd
Thickness : Approx. 0.40 mm
Hanging : Random
Precision trimmed for butt-joining by professional paper hangers.
Installation advice supplied with every roll.
Adhesive : Adhesive Tapetex PRO-1 or similar premixed heavy duty, clear vinyl adhesive, suitable for textile wallcovering.
Variation : There can be a variation between sample material and finished product.
Stock cuttings are available for approval.

Performance : See detailed results on our website.

Surface finish : A stain repellent finish prevents waterbased splashes penetrating and staining the material.
Periodic vacuuming is recommended to prevent dust from building up on the materials surface.
Lightfastness : Test result as per ISO 105-B02:2014, Heraeus original Hanau Xenotest.
LRV values : Testing as per BS 8493:2008+A1:2010, Datacolor DC500.
Fire rating : ASTM E84 Class 1 or A and EUROCLASS (B s2 d0).
Permeability rating : Test result 93.8 as per ASTM E96-12, Method B, Water Vapor Transmission.
Indoor air quality : ASTM D6196, D5197 and D5116, Environmental Chamber Test.
The testing followed UL 2821 "Greenguard Certification Program Method for Measuring and Evaluating Chemical Emissions".
REACH SVHC : Compliant as per Centexbel testing.
DoP No. : (CPR 305/2011), DOP-CPR-01

Sustainability

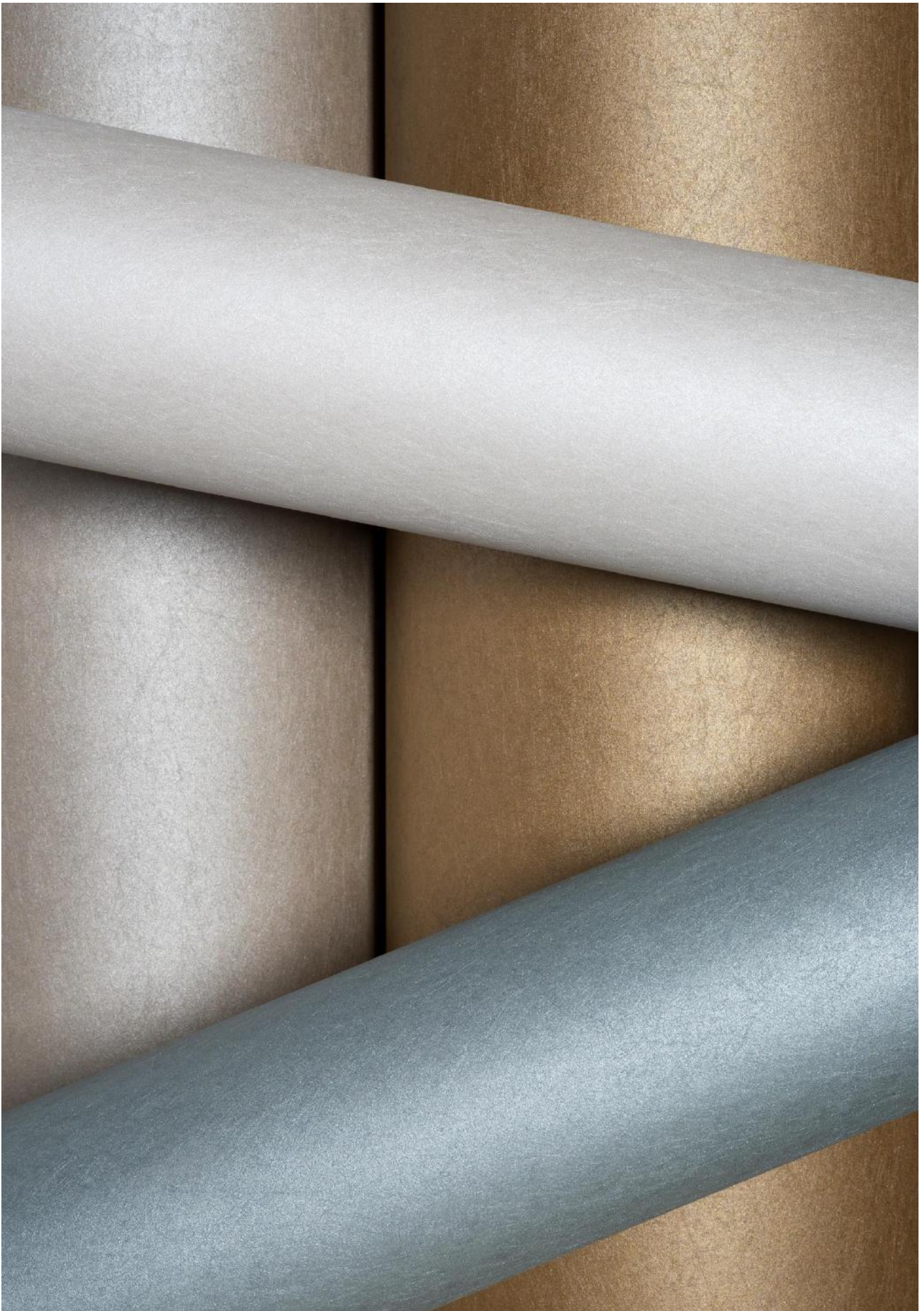
The nonwoven is FSC certified, FSC A000531.
In production, all energy sources are either green, wind or hydro based and all processes are waterbased. The products do not contain PVC, chlorine, plasticizers, heavy metals or harmful dyes.

Supply and packing

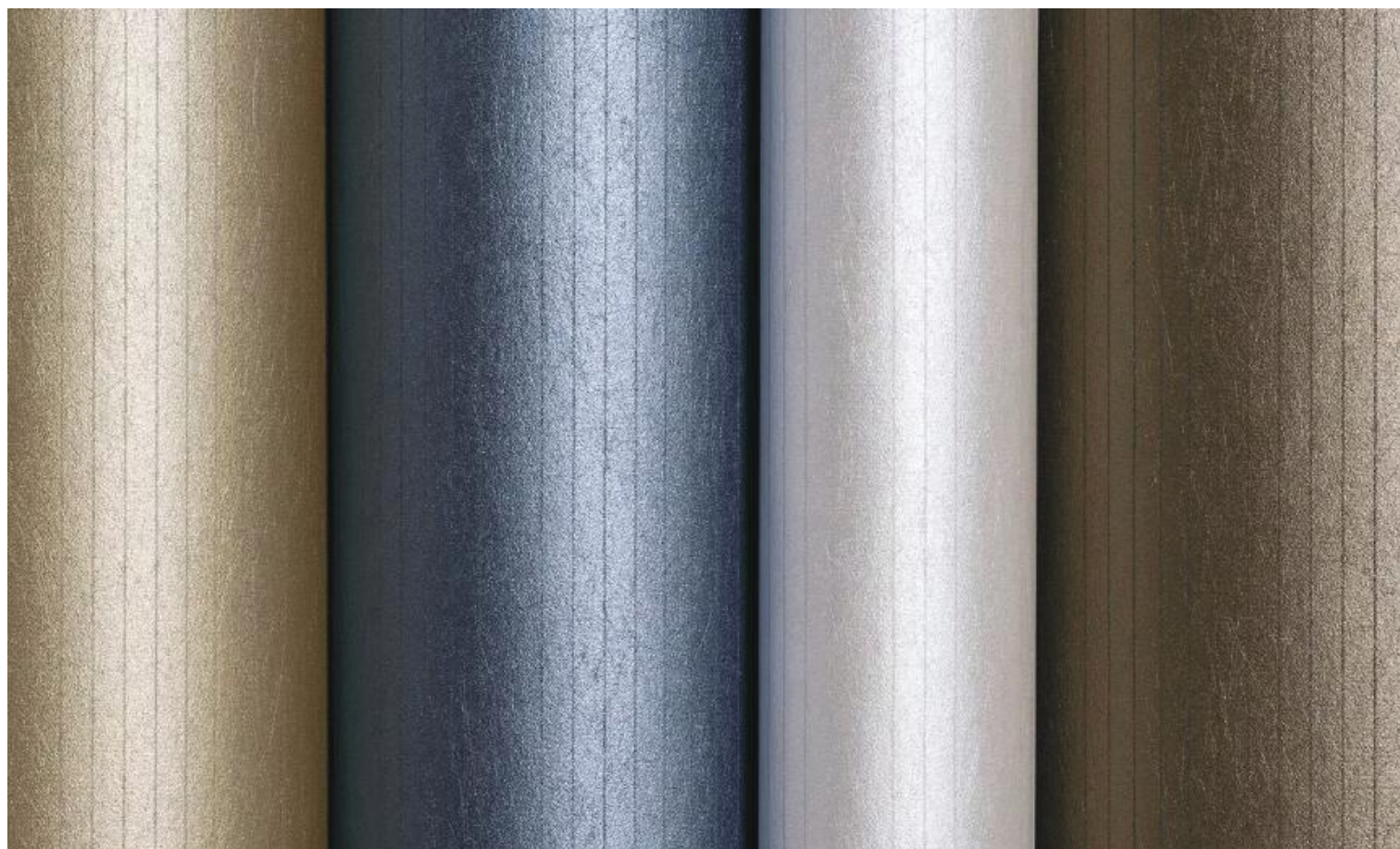
Delivery from stock by the full linear meter or full linear yard.
The average piece length of this quality is approx. 100 linear meter or 110 linear yards. However, as is common within the textile industry, it is not possible to establish a standard roll length.
The wallcovering is reeled on to a cardboard core, wrapped in polyethylene and protective end caps are fixed. Each roll is then packed in individual cardboard boxes or tubes, which are also made out of FSC certified woodpulp.

Harmonized System as per the World Customs Organization and Origin

Textile Wallcovering, paper backed: 5905.00. Made in the Netherlands.



Deauville



67-1700



67-1701



67-1702



67-1703



67-1704



67-1705



67-1706



67-1707



67-1708



67-1709



SPECIFICATION : **DEAUVILLE 67-1700/-1709**, a one-layer quality
Collection : 10 colours from Tapetex-67-Nonwoven

Physical properties

Composition : 70% FSC certified woodpulp, reinforced with 30% polyester.
Width : 137 cm = 54"
Weight : Approx. 260 gr/lm = 8.4 oz/lyd
Thickness : Approx. 0.40 mm
Hanging : On repeat, W0.7 cm - 0.3"
Precision trimmed for butt-joining by professional paper hangers.
Installation advice supplied with every roll.
Adhesive : Adhesive Tapetex PRO-1 or similar premixed heavy duty, clear vinyl adhesive, suitable for textile wallcovering.
Variation : There can be a variation between sample material and finished product. Stock cuttings are available for approval.

Performance : See detailed results on our website.

Surface finish : A stain repellent finish prevents waterbased splashes penetrating and staining the material.
Periodic vacuuming is recommended to prevent dust from building up on the materials surface.
Lightfastness : Test result as per ISO 105-B02:2014, Heraeus original Hanau Xenotest.
LRV values : Testing as per BS 8493:2008+A1:2010, Datacolor DC500.
Fire rating : ASTM E84 Class 1 or A and EUROCLASS (B s2 d0).
Permeability rating : Test result 93.8 as per ASTM E96-12, Method B, Water Vapor Transmission.
Indoor air quality : ASTM D6196, D5197 and D5116, Environmental Chamber Test.
The testing followed UL 2821 "Greenguard Certification Program Method for Measuring and Evaluating Chemical Emissions".
REACH SVHC : Compliant as per Centexbel testing.
DoP No. : (CPR 305/2011), DOP-CPR-01

Sustainability

The nonwoven is FSC certified, FSC A000531.
In production, all energy sources are either green, wind or hydro based and all processes are waterbased. The products do not contain PVC, chlorine, plasticizers, heavy metals or harmful dyes.

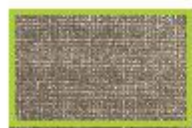
Supply and packing

Delivery from stock by the full linear meter or full linear yard.
The average piece length of this quality is approx. 50 linear meter or 55 linear yards. However, as is common within the textile industry, it is not possible to establish a standard roll length.
The wallcovering is reeled on to a cardboard core, wrapped in polyethylene and protective end caps are fixed. Each roll is then packed in individual cardboard boxes or tubes, which are also made out of FSC certified woodpulp.

Harmonized System as per the World Customs Organization and Origin

Textile Wallcovering, paper backed: 5905.00. Made in the Netherlands.

Oriente



67-1710



67-1711



67-1712



67-1713



67-1714



67-1715



67-1716



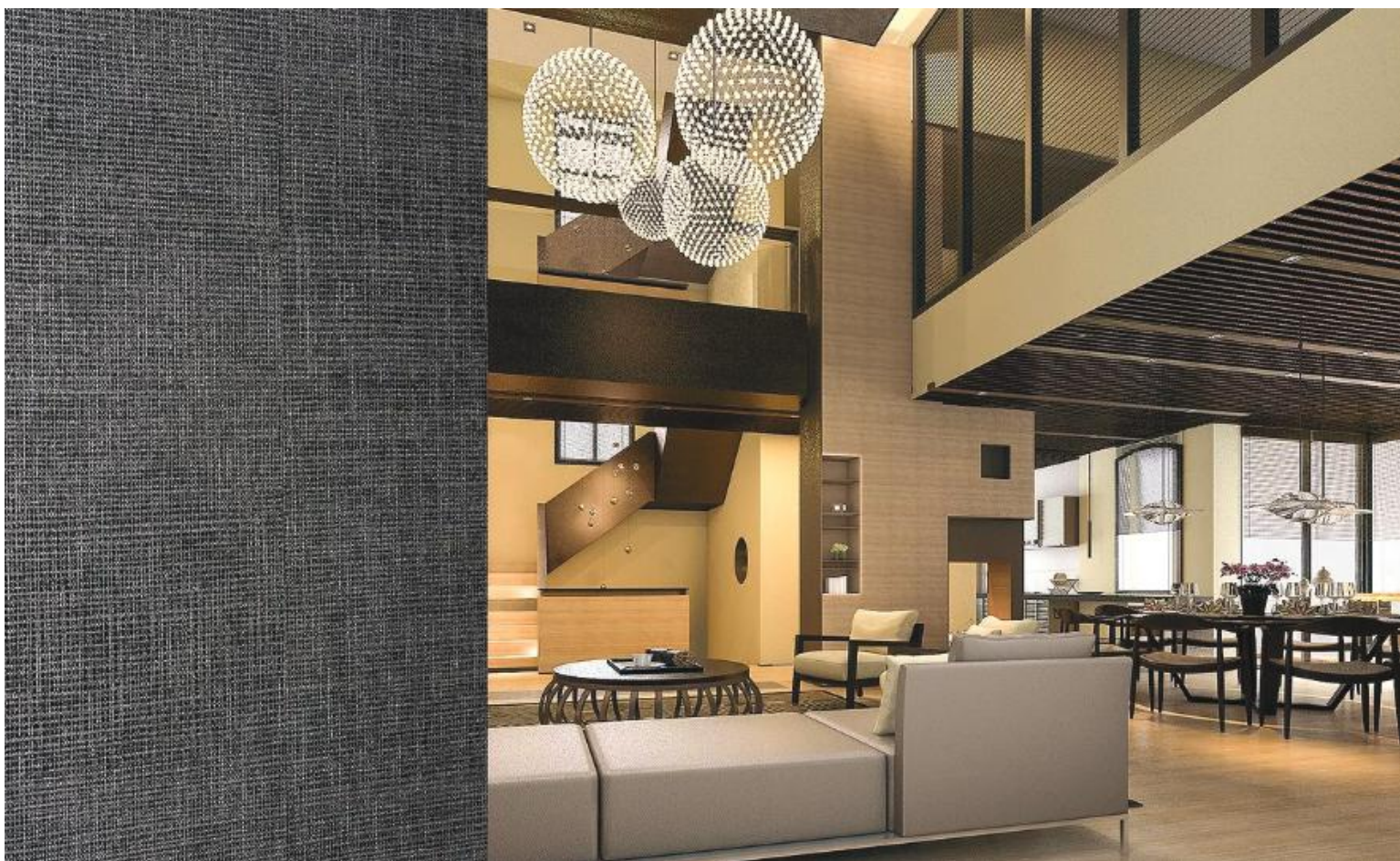
67-1717



67-1718



67-1719



SPECIFICATION : **ORIENTA 67-1710/-1719**, a one-layer quality
Collection : 10 colours from Tapetex-67-Nonwoven

Physical properties

Composition : 70% FSC certified woodpulp, reinforced with 30% polyester.
Width : 137 cm = 54"
Weight : Approx. 220 gr/lm = 7.1 oz/lyd
Thickness : Approx. 0.40 mm
Hanging : Random
See Venetian 67-1730/1734.
Precision trimmed for butt-joining by professional paper hangers.
Installation advice supplied with every roll.
Adhesive : Adhesive Tapetex PRO-1 or similar premixed heavy duty, clear vinyl adhesive, suitable for textile wallcovering.
Variation : There can be a variation between sample material and finished product.
Stock cuttings are available for approval.

Performance : See detailed results on our website.

Surface finish : A stain repellent finish prevents waterbased splashes penetrating and staining the material.
Periodic vacuuming is recommended to prevent dust from building up on the materials surface.
Lightfastness : Test result as per ISO 105-B02:2014, Heraeus original Hanau Xenotest 150S is minimum 6 on the standard blue scale.
LRV values : Testing as per BS 8493:2008+A1:2010, Datacolor DC500.
Fire rating : ASTM E84 Class 1 or A and EUROCLASS (B s2 d0).
Permeability rating : Test result 93.8 as per ASTM E96-12, Method B, Water Vapor Transmission.
Indoor air quality : ASTM D6196, D5197 and D5116, Environmental Chamber Test.
The testing followed UL 2821 "Greenguard Certification Program Method for Measuring and Evaluating Chemical Emissions".
REACH SVHC : Compliant as per Centexbel testing.
DoP No. : (CPR 305/2011), DOP-CPR-01

Sustainability

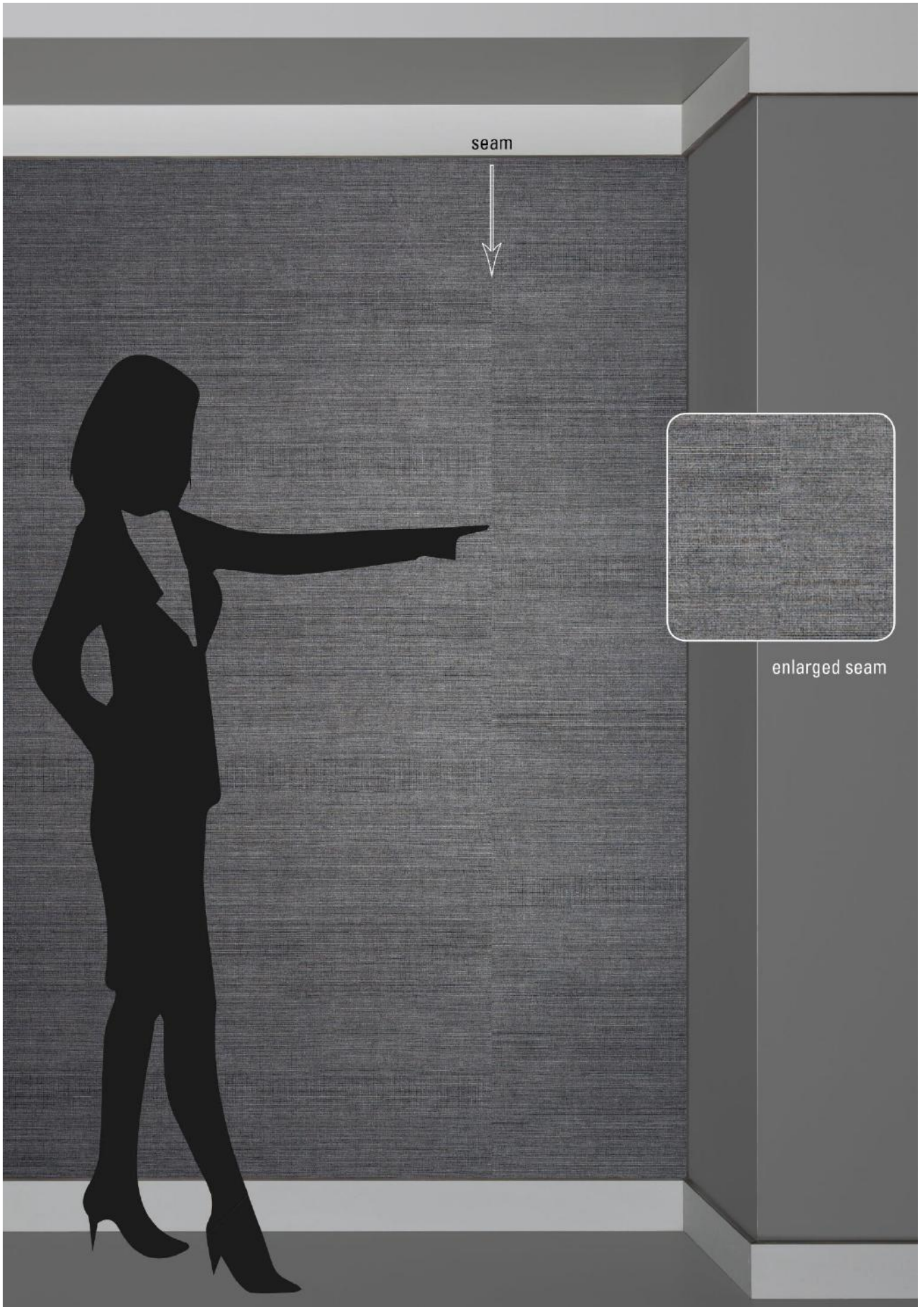
The nonwoven is FSC certified, FSC A000531.
In production, all energy sources are either green, wind or hydro based and all processes are waterbased. The products do not contain PVC, chlorine, plasticizers, heavy metals or harmful dyes.

Supply and packing

Delivery from stock by the full linear meter or full linear yard.
The average piece length of this quality is approx. 100 linear meter or 110 linear yards. However, as is common within the textile industry, it is not possible to establish a standard roll length.
The wallcovering is reeled on to a cardboard core, wrapped in polyethylene and protective end caps are fixed. Each roll is then packed in individual cardboard boxes or tubes, which are also made out of FSC certified woodpulp.

Harmonized System as per the World Customs Organization and Origin

Textile Wallcovering, paper backed: 5905.00. Made in the Netherlands.





Montado



67-1720



67-1721



67-1722



67-1723



67-1724



67-1725



67-1726



67-1727



67-1728



67-1729



SPECIFICATION : **MONTADO 67-1720/-1729**, a multi-layer quality
Collection : 10 colours from Tapetex-67-Nonwoven

Physical properties

Composition : 60% FSC certified woodpulp, reinforced with 40% polyester.
Backing : Paper backing of 70% FSC certified woodpulp reinforced with 30% polyester.
Width : 137 cm = 54"
Weight : Approx. 540 gr/lm = 17.4 oz/lyd
Thickness : Approx. 0.60 mm
Hanging : Random
Use a rubber roller instead of a spatula.
Precision trimmed for butt-joining by professional paper hangers.
Installation advice supplied with every roll.
Adhesive : Adhesive Tapetex PRO-1 or similar premixed heavy duty, clear vinyl adhesive, suitable for textile wallcovering.
Variation : There can be a variation between sample material and finished product.
Stock cuttings are available for approval.

Performance : See detailed results on our website.

Surface finish : A stain repellent finish prevents waterbased splashes penetrating and staining the material.
Periodic vacuuming is recommended to prevent dust from building up on the materials surface.
Lightfastness : Test result as per ISO 105-B02:2014, Heraeus original Hanau Xenotest.
LRV values : Testing as per BS 8493:2008+A1:2010, Datacolor DC500.
Fire rating : ASTM E84 Class 1 or A and EUROCLASS (B s1 d0).
Permeability rating : Test result 35.0 as per ASTM E96-12, Method B, Water Vapor Transmission.
Indoor air quality : ASTM D6196, D5197 and D5116, Environmental Chamber Test.
The testing followed UL 2821 "Greenguard Certification Program Method for Measuring and Evaluating Chemical Emissions".
REACH SVHC : Compliant as per Centexbel testing.
DoP No. : (CPR 305/2011), DOP-CPR-01

Sustainability

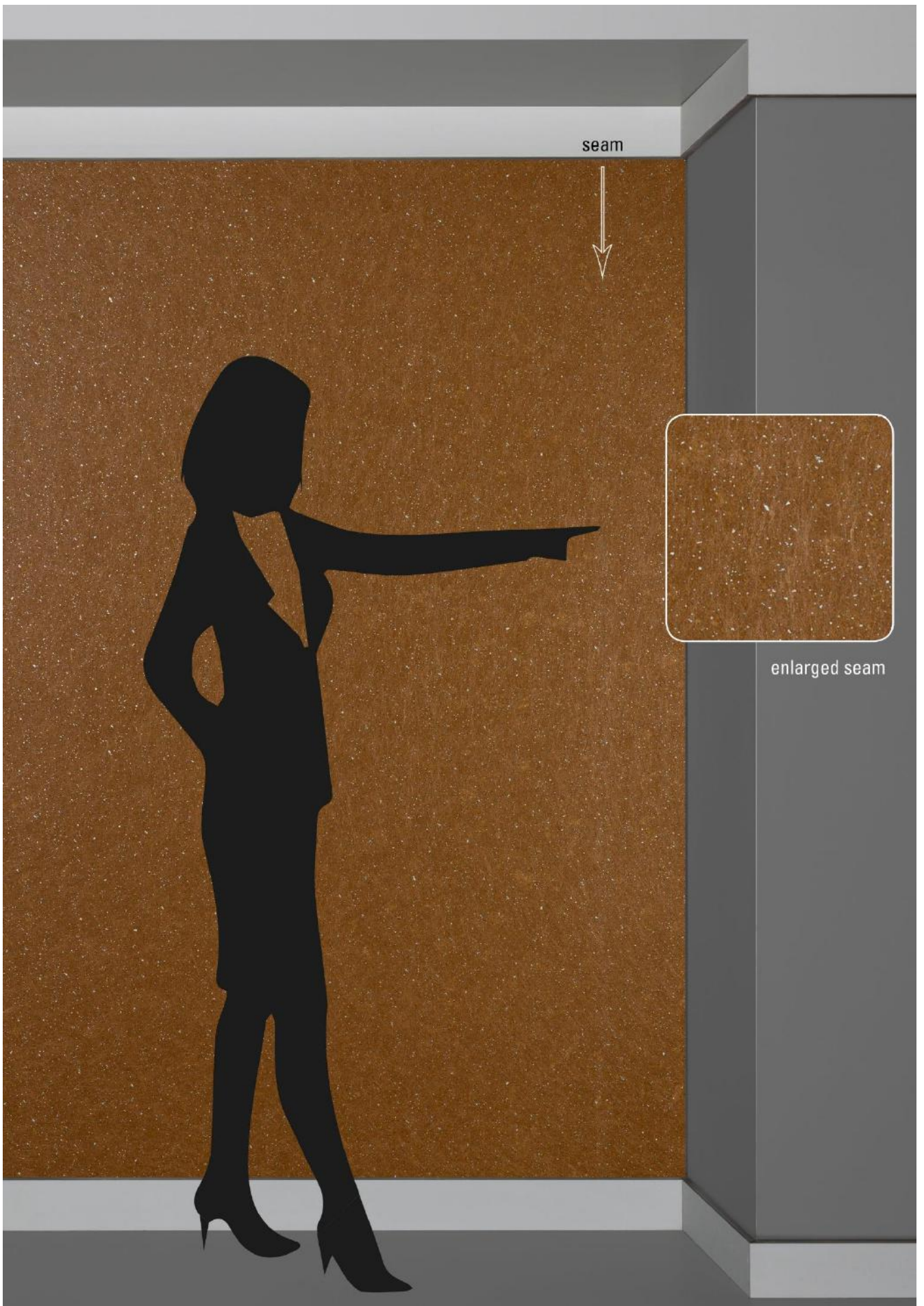
The nonwoven is FSC certified, FSC A000531.
In production, all energy sources are either green, wind or hydro based and all processes are waterbased. The products do not contain PVC, chlorine, plasticizers, heavy metals or harmful dyes.

Supply and packing

Delivery from stock by the full linear meter or full linear yard. The average piece length of this quality is approx. 50 linear meter or 55 linear yards. However, as is common within the textile industry, it is not possible to establish a standard roll length. The wallcovering is reeled on to a cardboard core, wrapped in polyethylene and protective end caps are fixed. Each roll is then packed in individual cardboard boxes or tubes, which are also made out of FSC certified woodpulp.

Harmonized System as per the World Customs Organization and Origin

Textile Wallcovering, paper backed: 5905.00. Made in the Netherlands.





Venetian



67-1730



67-1731



67-1732

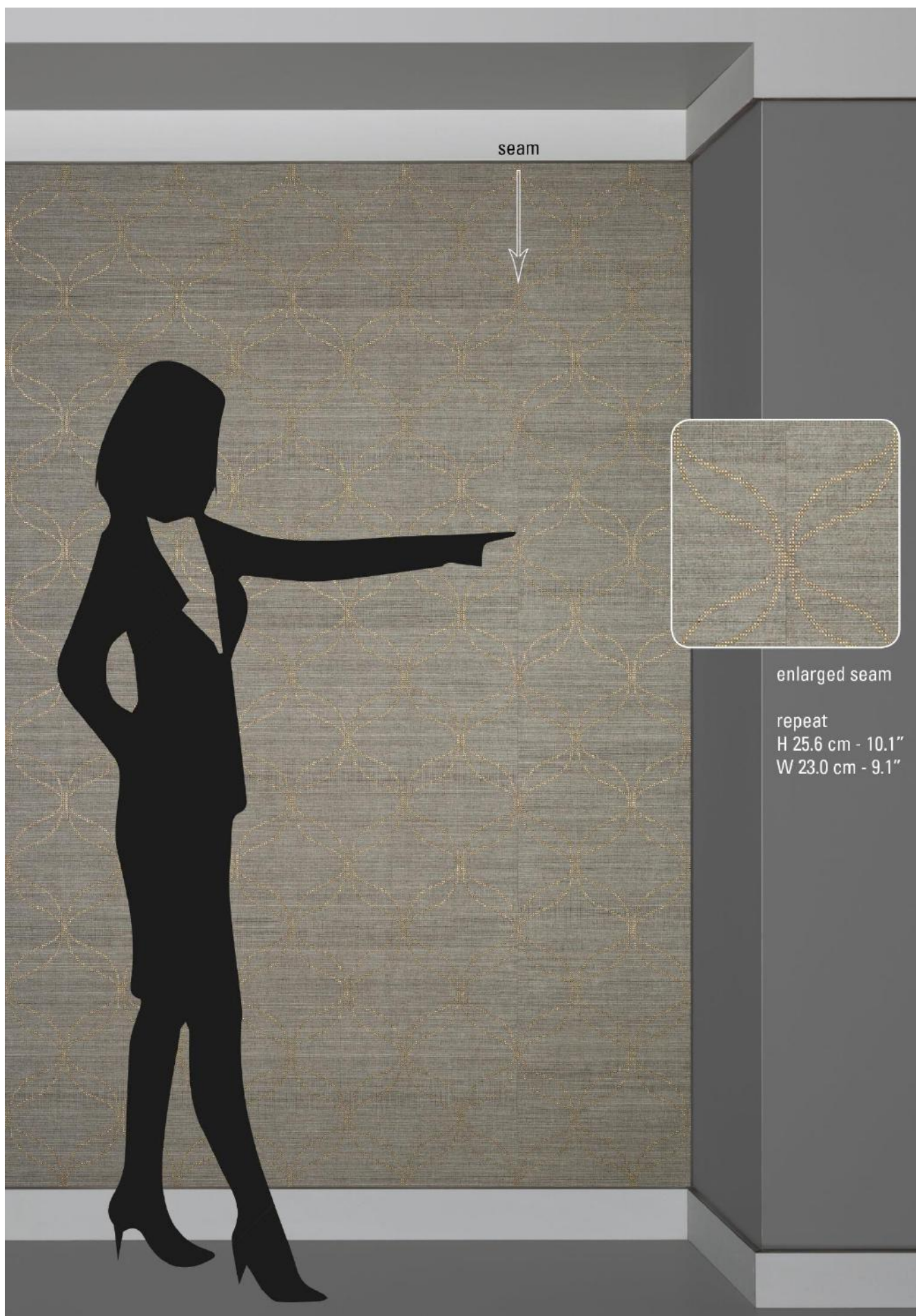


67-1733



67-1734





SPECIFICATION : **VENETIAN 67-1730/-1734**, a multi-layer quality
Collection : 5 colours from Tapetex-67-Nonwoven

Physical properties

Composition : 70% FSC certified woodpulp, reinforced with 30% polyester.
Backing : Paper backing of 70% FSC certified woodpulp reinforced with 30% polyester.
Width : 137 cm = 54"
Weight : Approx. 440 gr/lm = 14.2 oz/lyd
Thickness : Approx. 0.50 mm
Hanging : On repeat, H25.6 cm - 10.1" W23.0 cm - 9.1"
Use a rubber roller instead of a spatula.
Solid colours see Orienta 67-1710/1719.
Precision trimmed for butt-joining by professional paper hangers.
Installation advice supplied with every roll.
Adhesive : Adhesive Tapetex PRO-1 or similar premixed heavy duty, clear vinyl adhesive, suitable for textile wallcovering.
Variation : There can be a variation between sample material and finished product.
Stock cuttings are available for approval.

Performance : See detailed results on our website.

Surface finish : A stain repellent finish prevents waterbased splashes penetrating and staining the material. Periodic vacuuming is recommended to prevent dust from building up on the materials surface.
Lightfastness : Test result as per ISO 105-B02:2014, Heraeus original Hanau Xenotest.
LRV values : Testing as per BS 8493:2008+A1:2010, Datacolor DC500.
Fire rating : ASTM E84 Class 1 or A and EUROCLASS (B s1 d0).
Permeability rating : Test result 35.0 as per ASTM E96-12, Method B, Water Vapor Transmission.
Indoor air quality : ASTM D6196, D5197 and D5116, Environmental Chamber Test.
The testing followed UL 2821 "Greenguard Certification Program Method for Measuring and Evaluating Chemical Emissions".
REACH SVHC : Compliant as per Centexbel testing.
DoP No. : (CPR 305/2011), DOP-CPR-01

Sustainability

The nonwoven is FSC certified, FSC A000531.

In production, all energy sources are either green, wind or hydro based and all processes are waterbased. The products do not contain PVC, chlorine, plasticizers, heavy metals or harmful dyes.

Supply and packing

Delivery from stock by the full linear meter or full linear yard. The average piece length of this quality is approx. 50 linear meter or 55 linear yards. However, as is common within the textile industry, it is not possible to establish a standard roll length. The wallcovering is reeled on to a cardboard core, wrapped in polyethylene and protective end caps are fixed. Each roll is then packed in individual cardboard boxes or tubes, which are also made out of FSC certified woodpulp.

Harmonized System as per the World Customs Organization and Origin

Textile Wallcovering, paper backed: 5905.00. Made in the Netherlands.



Terral



67-1740



67-1741



67-1742



67-1743



67-1744



67-1745



67-1746



67-1747



67-1748



67-1749



SPECIFICATION : **TERRAL 67-1740/-1749**, a multi-layer quality
Collection : 10 colours from Tapetex-67-Nonwoven

Physical properties

Composition : 70% FSC certified woodpulp, reinforced with 20% polyester and 10% sisal fibres.
Backing : Paper backing of 70% FSC certified woodpulp reinforced with 30% polyester.
Width : 137 cm = 54"
Weight : Approx. 360 gr/lm = 11.6 oz/lyd
Thickness : Approx. 0.50 mm
Hanging : Random
Precision trimmed for butt-joining by professional paper hangers.
Installation advice supplied with every roll.
Adhesive : Adhesive Tapetex PRO-1 or similar premixed heavy duty, clear vinyl adhesive, suitable for textile wallcovering.
Variation : There can be a variation between sample material and finished product.
Stock cuttings are available for approval.

Performance : See detailed results on our website.

Surface finish : A stain repellent finish prevents waterbased splashes penetrating and staining the material.
Periodic vacuuming is recommended to prevent dust from building up on the materials surface.
Lightfastness : Test result as per ISO 105-B02:2014, Heraeus original Hanau Xenotest.
LRV values : Testing as per BS 8493:2008+A1:2010, Datacolor DC500.
Fire rating : ASTM E84 Class 1 or A and EUROCLASS (B s2 d0).
Permeability rating : Test result 93.8 as per ASTM E96-12, Method B, Water Vapor Transmission.
Indoor air quality : ASTM D6196, D5197 and D5116, Environmental Chamber Test.
The testing followed UL 2821 "Greenguard Certification Program Method for Measuring and Evaluating Chemical Emissions".
REACH SVHC : Compliant as per Centexbel testing.
DoP No. : (CPR 305/2011), DOP-CPR-01

Sustainability

The nonwoven is FSC certified, FSC A000531.

In production, all energy sources are either green, wind or hydro based and all processes are waterbased. The products do not contain PVC, chlorine, plasticizers, heavy metals or harmful dyes.

Supply and packing

Delivery from stock by the full linear meter or full linear yard. The average piece length of this quality is approx. 50 linear meter or 55 linear yards. However, as is common within the textile industry, it is not possible to establish a standard roll length. The wallcovering is reeled on to a cardboard core, wrapped in polyethylene and protective end caps are fixed. Each roll is then packed in individual cardboard boxes or tubes, which are also made out of FSC certified woodpulp.

Harmonized System as per the World Customs Organization and Origin

Textile Wallcovering, paper backed: 5905.00. Made in the Netherlands.

Samsara



67-1750



67-1751



67-1752

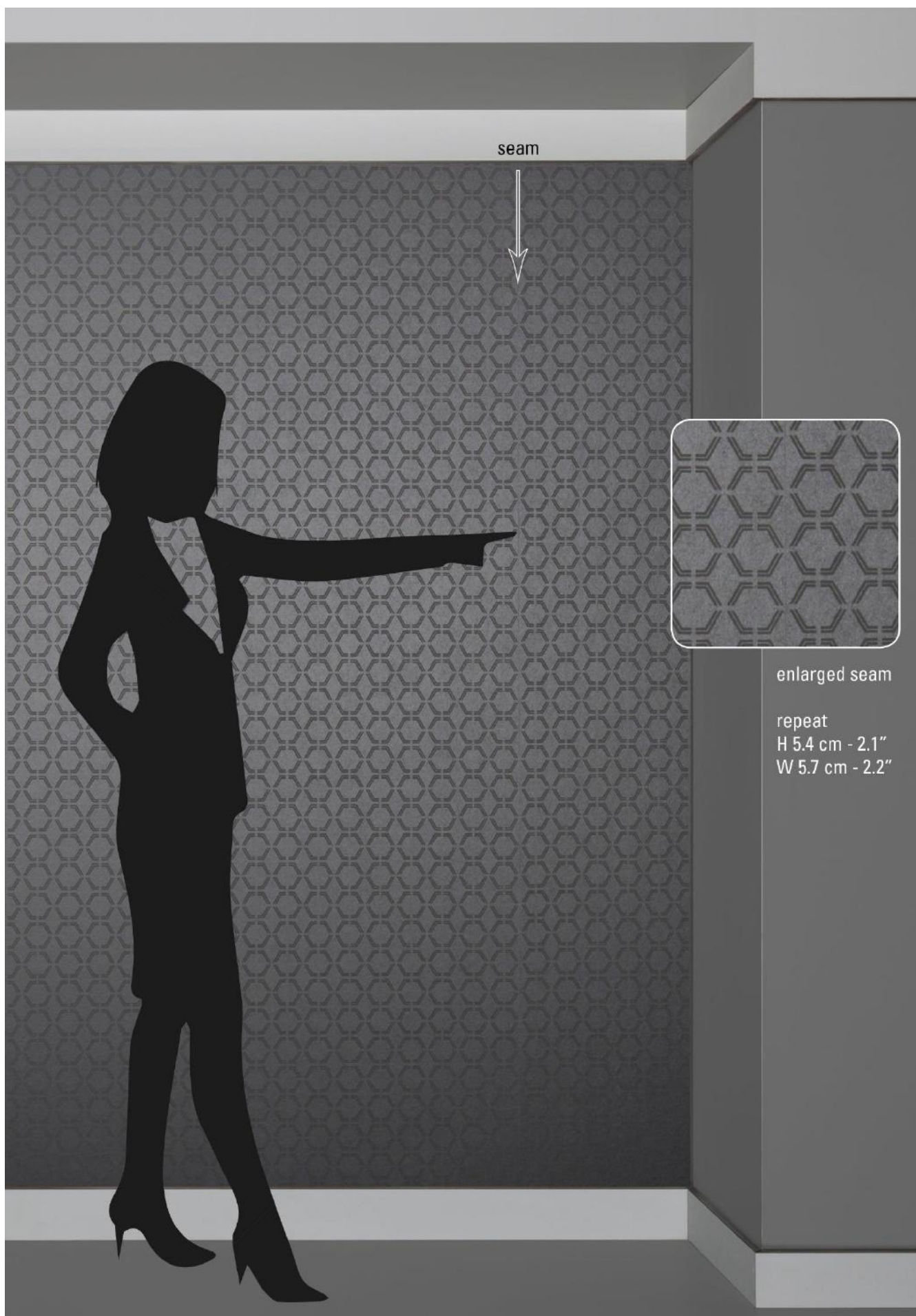


67-1753



67-1754





seam



enlarged seam

repeat
H 5.4 cm - 2.1"
W 5.7 cm - 2.2"

SPECIFICATION : **SAMSARA 67-1750/-1754**, a one-layer quality
Collection : 5 colours from Tapetex-67-Nonwoven

Physical properties

Composition : 70% FSC certified woodpulp, reinforced with 30% polyester.
Width : 137 cm = 54"
Weight : Approx. 300 gr/lm = 9.7 oz/lyd
Thickness : Approx. 0.60 mm
Hanging : On repeat, H5.4 cm - 2.1" W5.7 cm - 2.2", non-reverse.
Use a rubber roller instead of a spatula.
Precision trimmed for butt-joining by professional paper hangers.
Installation advice supplied with every roll.
Adhesive : Adhesive Tapetex PRO-1 or similar premixed heavy duty, clear vinyl adhesive, suitable for textile wallcovering.
Variation : There can be a variation between sample material and finished product. Stock cuttings are available for approval.

Performance : See detailed results on our website.

Surface finish : A stain repellent finish prevents waterbased splashes penetrating and staining the material.
Periodic vacuuming is recommended to prevent dust from building up on the materials surface.
Lightfastness : Test result as per ISO 105-B02:2014, Heraeus original Hanau Xenotest.
LRV values : Testing as per BS 8493:2008+A1:2010, Datacolor DC500.
Fire rating : ASTM E84 Class 1 or A and EUROCLASS (B s2 d0).
Permeability rating : Test result 93.8 as per ASTM E96-12, Method B, Water Vapor Transmission.
Indoor air quality : ASTM D6196, D5197 and D5116, Environmental Chamber Test.
The testing followed UL 2821 "Greenguard Certification Program Method for Measuring and Evaluating Chemical Emissions".
REACH SVHC : Compliant as per Centexbel testing.
DoP No. : (CPR 305/2011), DOP-CPR-01

Sustainability

The nonwoven is FSC certified, FSC A000531.
In production, all energy sources are either green, wind or hydro based and all processes are waterbased. The products do not contain PVC, chlorine, plasticizers, heavy metals or harmful dyes.

Supply and packing

Delivery from stock by the full linear meter or full linear yard.
The average piece length of this quality is approx. 50 linear meter or 55 linear yards. However, as is common within the textile industry, it is not possible to establish a standard roll length.
The wallcovering is reeled on to a cardboard core, wrapped in polyethylene and protective end caps are fixed. Each roll is then packed in individual cardboard boxes or tubes, which are also made out of FSC certified woodpulp.

Harmonized System as per the World Customs Organization and Origin

Textile Wallcovering, paper backed: 5905.00. Made in the Netherlands.



Rondo



67-1760



67-1761



67-1762



67-1763



67-1764





seam



enlarged seam

repeat
H 8.0 cm - 3.1"
W 4.0 cm - 1.6"

SPECIFICATION : **RONDO 67-1760/-1764**, a multi-layer quality
Collection : 5 colours from Tapetex-67-Nonwoven

Physical properties

Composition : 60% FSC certified woodpulp, reinforced with 40% polyester.
Backing : Paper backing of 70% FSC certified woodpulp reinforced with 30% polyester.
Width : 137 cm = 54"
Weight : Approx. 470 gr/lm = 15.2 oz/lyd
Thickness : Approx. 0.70 mm
Hanging : On repeat, H8.0 cm - 3.1" W4.0 cm - 1.6"
Use a rubber roller instead of a spatula.
Precision trimmed for butt-joining by professional paper hangers.
Installation advice supplied with every roll.
Adhesive : Adhesive Tapetex PRO-1 or similar premixed heavy duty, clear vinyl adhesive, suitable for textile wallcovering.
Variation : There can be a variation between sample material and finished product.
Stock cuttings are available for approval.

Performance : See detailed results on our website.

Surface finish : A stain repellent finish prevents waterbased splashes penetrating and staining the material.
Periodic vacuuming is recommended to prevent dust from building up on the materials surface.
Lightfastness : Test result as per ISO 105-B02:2014, Heraeus original Hanau Xenotest.
LRV values : Testing as per BS 8493:2008+A1:2010, Datacolor DC500.
Fire rating : ASTM E84 Class 1 or A and EUROCLASS (B s1 d0).
Permeability rating : Test result 35.0 as per ASTM E96-12, Method B, Water Vapor Transmission.
Indoor air quality : ASTM D6196, D5197 and D5116, Environmental Chamber Test.
The testing followed UL 2821 "Greenguard Certification Program Method for Measuring and Evaluating Chemical Emissions".
REACH SVHC : Compliant as per Centexbel testing.
DoP No. : (CPR 305/2011), DOP-CPR-01

Sustainability

The nonwoven is FSC certified, FSC A000531.
In production, all energy sources are either green, wind or hydro based and all processes are waterbased. The products do not contain PVC, chlorine, plasticizers, heavy metals or harmful dyes.

Supply and packing

Delivery from stock by the full linear meter or full linear yard. The average piece length of this quality is approx. 50 linear meter or 55 linear yards. However, as is common within the textile industry, it is not possible to establish a standard roll length. The wallcovering is reeled on to a cardboard core, wrapped in polyethylene and protective end caps are fixed. Each roll is then packed in individual cardboard boxes or tubes, which are also made out of FSC certified woodpulp.

Harmonized System as per the World Customs Organization and Origin

Textile Wallcovering, paper backed: 5905.00. Made in the Netherlands.



Grandessa



67-1770



67-1771



67-1772



67-1773



67-1774



67-1775



67-1776



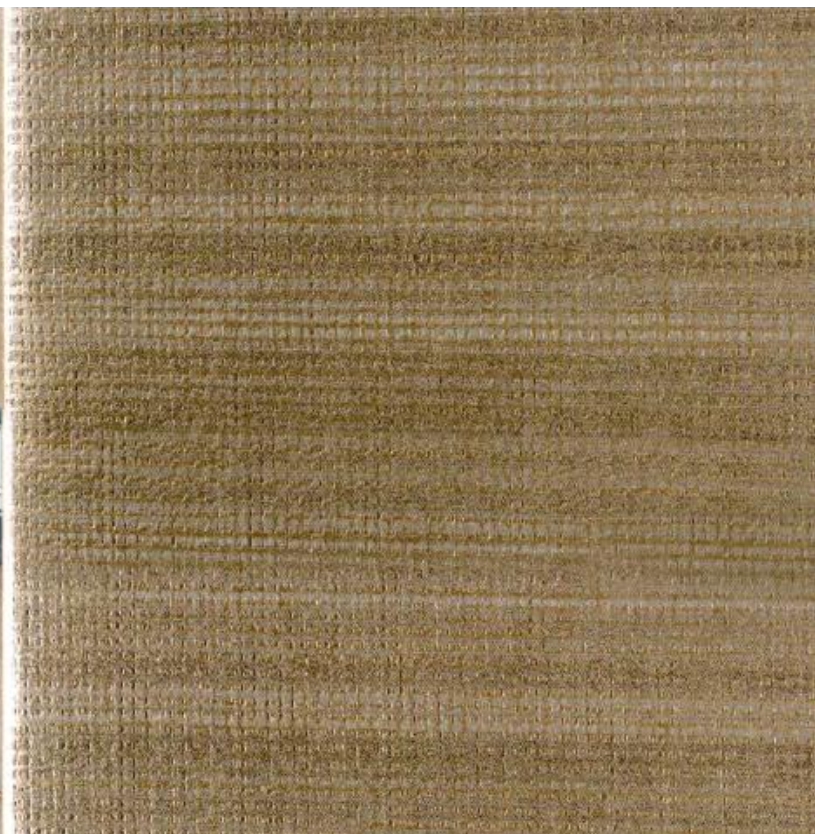
67-1777

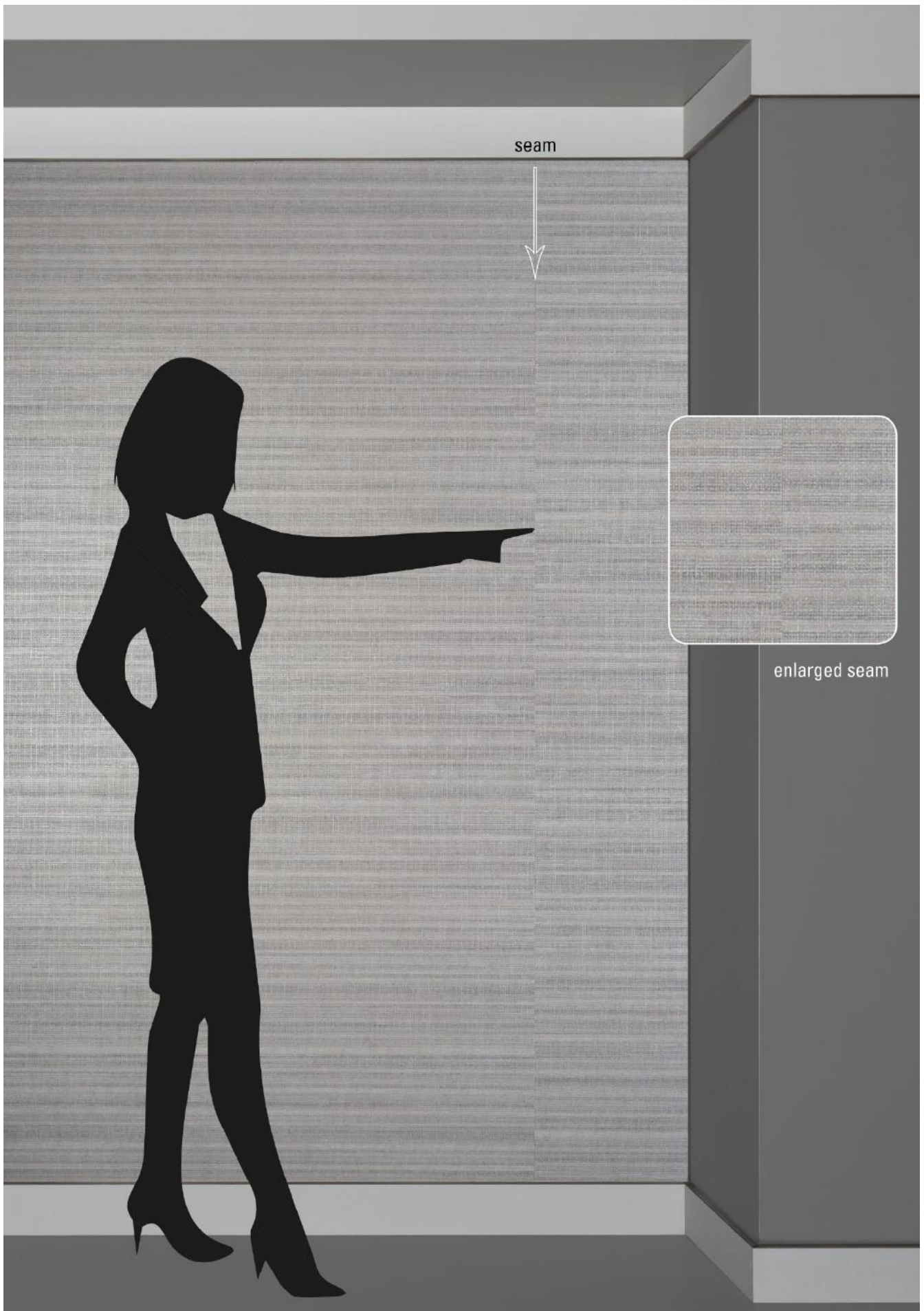


67-1778



67-1779





SPECIFICATION : **GRANDESSA 67-1770/-1779**, a one-layer quality
Collection : 10 colours from Tapetex-67-Nonwoven

Physical properties

Composition : 70% FSC certified woodpulp, reinforced with 30% polyester.
Width : 137 cm = 54"
Weight : Approx. 300 gr/lm = 9.7 oz/lyd
Thickness : Approx. 0.50 mm
Hanging : Random
Precision trimmed for butt-joining by professional paper hangers.
Installation advice supplied with every roll.
Adhesive : Adhesive Tapetex PRO-1 or similar premixed heavy duty, clear vinyl adhesive, suitable for textile wallcovering.
Variation : There can be a variation between sample material and finished product.
Stock cuttings are available for approval.

Performance : See detailed results on our website.

Surface finish : A stain repellent finish prevents waterbased splashes penetrating and staining the material.
Periodic vacuuming is recommended to prevent dust from building up on the materials surface.
Lightfastness : Test result as per ISO 105-B02:2014, Heraeus original Hanau Xenotest.
LRV values : Testing as per BS 8493:2008+A1:2010, Datacolor DC 500.
Fire rating : ASTM E84 Class 1 or A and EUROCLASS (B s2 d0).
Permeability rating : Test result 93.8 as per ASTM E96-12, Method B, Water Vapor Transmission.
Indoor air quality : ASTM D6196, D5197 and D5116, Environmental Chamber Test.
The testing followed UL 2821 "Greenguard Certification Program Method for Measuring and Evaluating Chemical Emissions".
REACH SVHC : Compliant as per Centexbel testing.
DoP No. : (CPR 305/2011), DOP-CPR-01

Sustainability

The nonwoven is FSC certified, FSC A000531.
In production, all energy sources are either green, wind or hydro based and all processes are waterbased. The products do not contain PVC, chlorine, plasticizers, heavy metals or harmful dyes.

Supply and packing

Delivery from stock by the full linear meter or full linear yard.
The average piece length of this quality is approx. 50 linear meter or 55 linear yards. However, as is common within the textile industry, it is not possible to establish a standard roll length.
The wallcovering is reeled on to a cardboard core, wrapped in polyethylene and protective end caps are fixed. Each roll is then packed in individual cardboard boxes or tubes, which are also made out of FSC certified woodpulp.

Harmonized System as per the World Customs Organization and Origin

Textile Wallcovering, paper backed: 5905.00. Made in the Netherlands.



tapetex wall materials



67-1780



67-1781



67-1782



67-1783



67-1784



67-1785



67-1786



67-1787



67-1788



67-1789

SPECIFICATION : **CHAMBORD 67-1780/-1789**, a one-layer quality
Collection : 10 colours from Tapetex-67-Nonwoven

Physical properties

Composition : 70% FSC certified woodpulp, reinforced with 30% polyester.
Width : 137 cm = 54"
Weight : Approx. 300 gr/lm = 9.7 oz/lyd
Thickness : Approx. 0.40 mm
Hanging : Random
Precision trimmed for butt-joining by professional paper hangers.
Installation advice supplied with every roll.
Adhesive : Adhesive Tapetex PRO-1 or similar premixed heavy duty, clear vinyl adhesive, suitable for textile wallcovering.
Variation : There can be a variation between sample material and finished product. Stock cuttings are available for approval.

Performance

Surface finish : A stain repellent finish prevents waterbased splashes penetrating and staining the material.
Periodic vacuuming is recommended to prevent dust from building up on the materials surface.
Lightfastness : Test result as per ISO 105-B02:2014, Heraeus original Hanau Xenotest.
LRV values : Testing as per BS 8493:2008+A1:2010, Datacolor DC500.
Fire rating : ASTM E84 Class 1 or A and EUROCLASS (B s2 d0).
Permeability rating : Test result 93.8 as per ASTM E96-12, Method B, Water Vapor Transmission.
Indoor air quality : ASTM D6196, D5197 and D5116, Environmental Chamber Test.
The testing followed UL 2821 "Greenguard Certification Program Method for Measuring and Evaluating Chemical Emissions".
REACH SVHC : Compliant as per Centexbel testing.
DoP No. : (CPR 305/2011), DOP-CPR-01

Sustainability

The nonwoven is FSC certified, FSC A000531.
In production, all energy sources are either green, wind or hydro based and all processes are waterbased. The products do not contain PVC, chlorine, plasticizers, heavy metals or harmful dyes.

Supply and packing

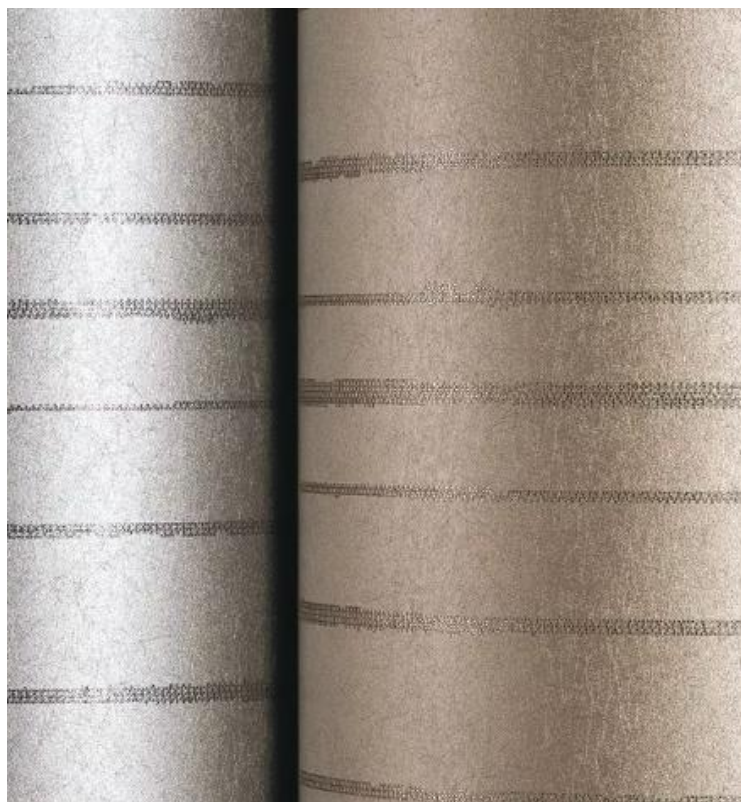
Delivery from stock by the full linear meter or full linear yard.
The average piece length of this quality is approx. 50 linear meter or 55 linear yards. However, as is common within the textile industry, it is not possible to establish a standard roll length.
The wallcovering is reeled on to a cardboard core, wrapped in polyethylene and protective end caps are fixed. Each roll is then packed in individual cardboard boxes or tubes, which are also made out of FSC certified woodpulp.

Harmonized System as per the World Customs Organization and Origin

Textile Wallcovering, paper backed: 5905.00. Made in the Netherlands.



Tiffany



67-1790



67-1791



67-1792



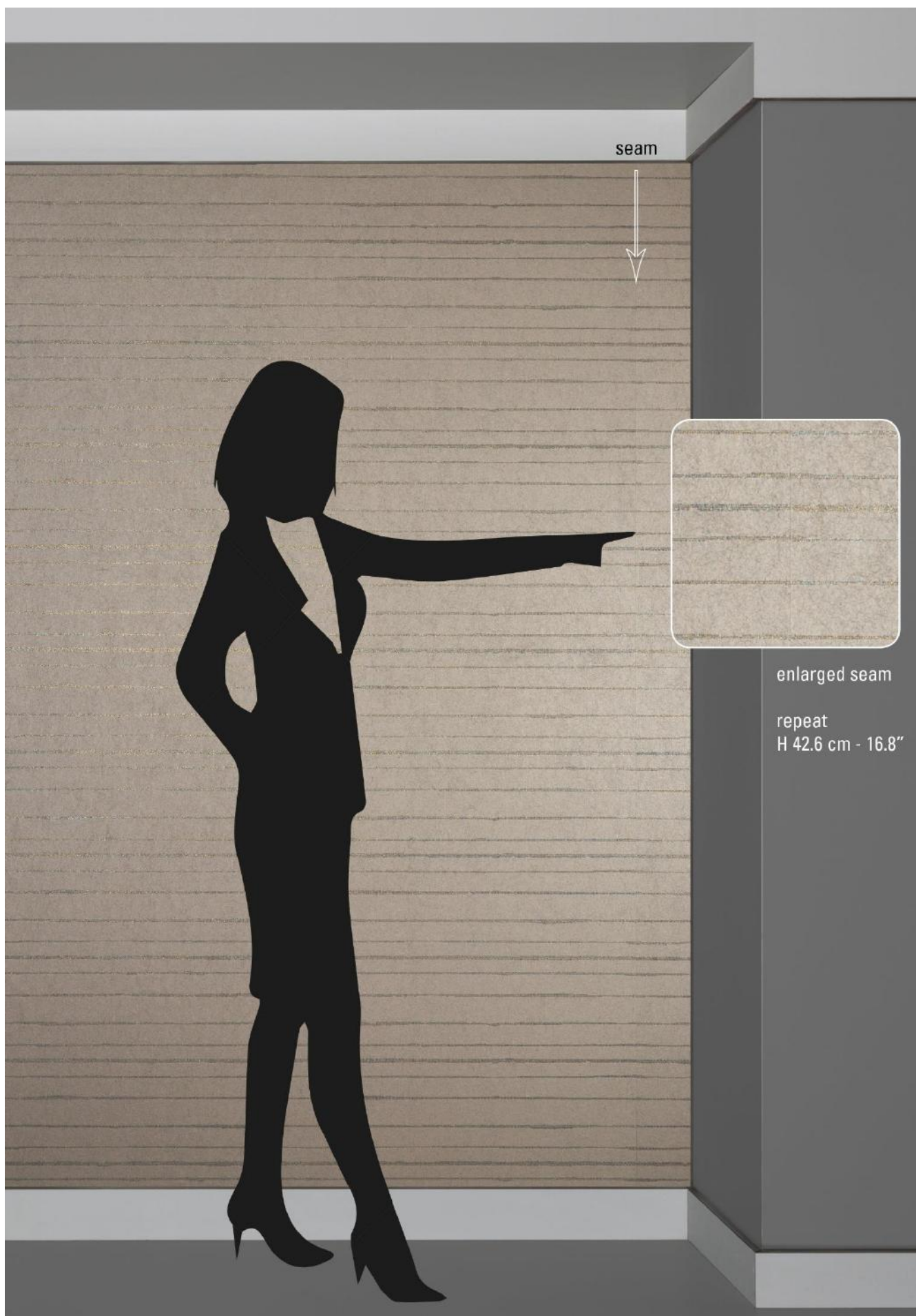
67-1793



67-1794



tapetex wall materials



SPECIFICATION : **TIFFANY 67-1790/-1794**, a multi-layer quality
Collection : 5 colours from Tapetex-67-Nonwoven

Physical properties

Composition : 70% FSC certified woodpulp, reinforced with 30% polyester.
Backing : Paper backing of 70% FSC certified woodpulp reinforced with 30% polyester.
Width : 137 cm = 54"
Weight : Approx. 470 gr/lm = 15.2 oz/lyd
Thickness : Approx. 0.60 mm
Hanging : On repeat, H42.6 cm - 16.8"
Use a rubber roller instead of a spatula.
Precision trimmed for butt-joining by professional paper hangers.
Installation advice supplied with every roll.
Adhesive : Adhesive Tapetex PRO-1 or similar premixed heavy duty, clear vinyl adhesive, suitable for textile wallcovering.
Variation : There can be a variation between sample material and finished product.
Stock cuttings are available for approval.

Performance : See detailed results on our website.

Surface finish : A stain repellent finish prevents waterbased splashes penetrating and staining the material.
Periodic vacuuming is recommended to prevent dust from building up on the materials surface.
Lightfastness : Test result as per ISO 105-B02:2014, Heraeus original Hanau Xenotest.
LRV values : Testing as per BS 8493:2008+A1:2010, Datacolor DC500.
Fire rating : ASTM E84 Class 1 or A and EUROCLASS (B s1 d0).
Permeability rating : Test result 35.0 as per ASTM E96-12, Method B, Water Vapor Transmission.
Indoor air quality : ASTM D6196, D5197 and D5116, Environmental Chamber Test.
The testing followed UL 2821 "Greenguard Certification Program Method for Measuring and Evaluating Chemical Emissions".
REACH SVHC : Compliant as per Centexbel testing.
DoP No. : (CPR 305/2011), DOP-CPR-01

Sustainability

The nonwoven is FSC certified, FSC A000531.

In production, all energy sources are either green, wind or hydro based and all processes are waterbased. The products do not contain PVC, chlorine, plasticizers, heavy metals or harmful dyes.

Supply and packing

Delivery from stock by the full linear meter or full linear yard. The average piece length of this quality is approx. 50 linear meter or 55 linear yards. However, as is common within the textile industry, it is not possible to establish a standard roll length. The wallcovering is reeled on to a cardboard core, wrapped in polyethylene and protective end caps are fixed. Each roll is then packed in individual cardboard boxes or tubes, which are also made out of FSC certified woodpulp.

Harmonized System as per the World Customs Organization and Origin

Textile Wallcovering, paper backed: 5905.00. Made in the Netherlands.



Fenda



67-1800



67-1801



67-1802



67-1803



67-1804



67-1805



67-1806



67-1807



67-1808



67-1809

SPECIFICATION : **CORONA 67-1810/-1819**, a multi-layer quality
Collection : 10 colours from Tapetex-67-Nonwoven

Physical properties

Composition : 60% FSC certified woodpulp, reinforced with 40% polyester.
Backing : Paper backing of 70% FSC certified woodpulp reinforced with 30% polyester.
Width : 137 cm = 54"
Weight : Approx. 300 gr/lm = 9.7 oz/lyd
Thickness : Approx. 0.50 mm
Hanging : Random
Precision trimmed for butt-joining by professional paper hangers.
Installation advice supplied with every roll.
Adhesive : Adhesive Tapetex PRO-1 or similar premixed heavy duty, clear vinyl adhesive, suitable for textile wallcovering.
Variation : There can be a variation between sample material and finished product.
Stock cuttings are available for approval.

Performance : See detailed results on our website.

Surface finish : A stain repellent finish prevents waterbased splashes penetrating and staining the material.
Periodic vacuuming is recommended to prevent dust from building up on the materials surface.
Lightfastness : Test result as per ISO 105-B02:2014, Heraeus original Hanau Xenotest.
LRV values : Testing as per BS 8493:2008+A1:2010, Datacolor DC500.
Fire rating : ASTM E84 Class 1 or A and EUROCLASS (B s1 d0).
Permeability rating : Test result 35.0 as per ASTM E96-12, Method B, Water Vapor Transmission.
Indoor air quality : ASTM D6196, D5197 and D5116, Environmental Chamber Test.
The testing followed UL 2821 "Greenguard Certification Program Method for Measuring and Evaluating Chemical Emissions".
REACH SVHC : Compliant as per Centexbel testing.
DoP No. : (CPR 305/2011), DOP-CPR-01

Sustainability

The nonwoven is FSC certified, FSC A000531.

In production, all energy sources are either green, wind or hydro based and all processes are waterbased. The products do not contain PVC, chlorine, plasticizers, heavy metals or harmful dyes.

Supply and packing

Delivery from stock by the full linear meter or full linear yard.

The average piece length of this quality is approx. 50 linear meter or 55 linear yards. However, as is common within the textile industry, it is not possible to establish a standard roll length.

The wallcovering is reeled on to a cardboard core, wrapped in polyethylene and protective end caps are fixed. Each roll is then packed in individual cardboard boxes or tubes, which are also made out of FSC certified woodpulp.

Harmonized System as per the World Customs Organization and Origin

Textile Wallcovering, paper backed: 5905.00. Made in the Netherlands.



SPECIFICATION : **CORONA 67-1810/-1819**, a multi-layer quality
Collection : 10 colours from Tapetex-67-Nonwoven

Physical properties

Composition : 60% FSC certified woodpulp, reinforced with 40% polyester.
Backing : Paper backing of 70% FSC certified woodpulp reinforced with 30% polyester.
Width : 137 cm = 54"
Weight : Approx. 300 gr/lm = 9.7 oz/lyd
Thickness : Approx. 0.50 mm
Hanging : Random
Precision trimmed for butt-joining by professional paper hangers.
Installation advice supplied with every roll.
Adhesive : Adhesive Tapetex PRO-1 or similar premixed heavy duty, clear vinyl adhesive, suitable for textile wallcovering.
Variation : There can be a variation between sample material and finished product.
Stock cuttings are available for approval.

Performance : See detailed results on our website.

Surface finish : A stain repellent finish prevents waterbased splashes penetrating and staining the material.
Periodic vacuuming is recommended to prevent dust from building up on the materials surface.
Lightfastness : Test result as per ISO 105-B02:2014, Heraeus original Hanau Xenotest.
LRV values : Testing as per BS 8493:2008+A1:2010, Datacolor DC500.
Fire rating : ASTM E84 Class 1 or A and EUROCLASS (B s1 d0).
Permeability rating : Test result 35.0 as per ASTM E96-12, Method B, Water Vapor Transmission.
Indoor air quality : ASTM D6196, D5197 and D5116, Environmental Chamber Test.
The testing followed UL 2821 "Greenguard Certification Program Method for Measuring and Evaluating Chemical Emissions".
REACH SVHC : Compliant as per Centexbel testing.
DoP No. : (CPR 305/2011), DOP-CPR-01

Sustainability

The nonwoven is FSC certified, FSC A000531.

In production, all energy sources are either green, wind or hydro based and all processes are waterbased. The products do not contain PVC, chlorine, plasticizers, heavy metals or harmful dyes.

Supply and packing

Delivery from stock by the full linear meter or full linear yard.

The average piece length of this quality is approx. 50 linear meter or 55 linear yards. However, as is common within the textile industry, it is not possible to establish a standard roll length.

The wallcovering is reeled on to a cardboard core, wrapped in polyethylene and protective end caps are fixed. Each roll is then packed in individual cardboard boxes or tubes, which are also made out of FSC certified woodpulp.

Harmonized System as per the World Customs Organization and Origin

Textile Wallcovering, paper backed: 5905.00. Made in the Netherlands.



Primavera



67-1820



67-1821



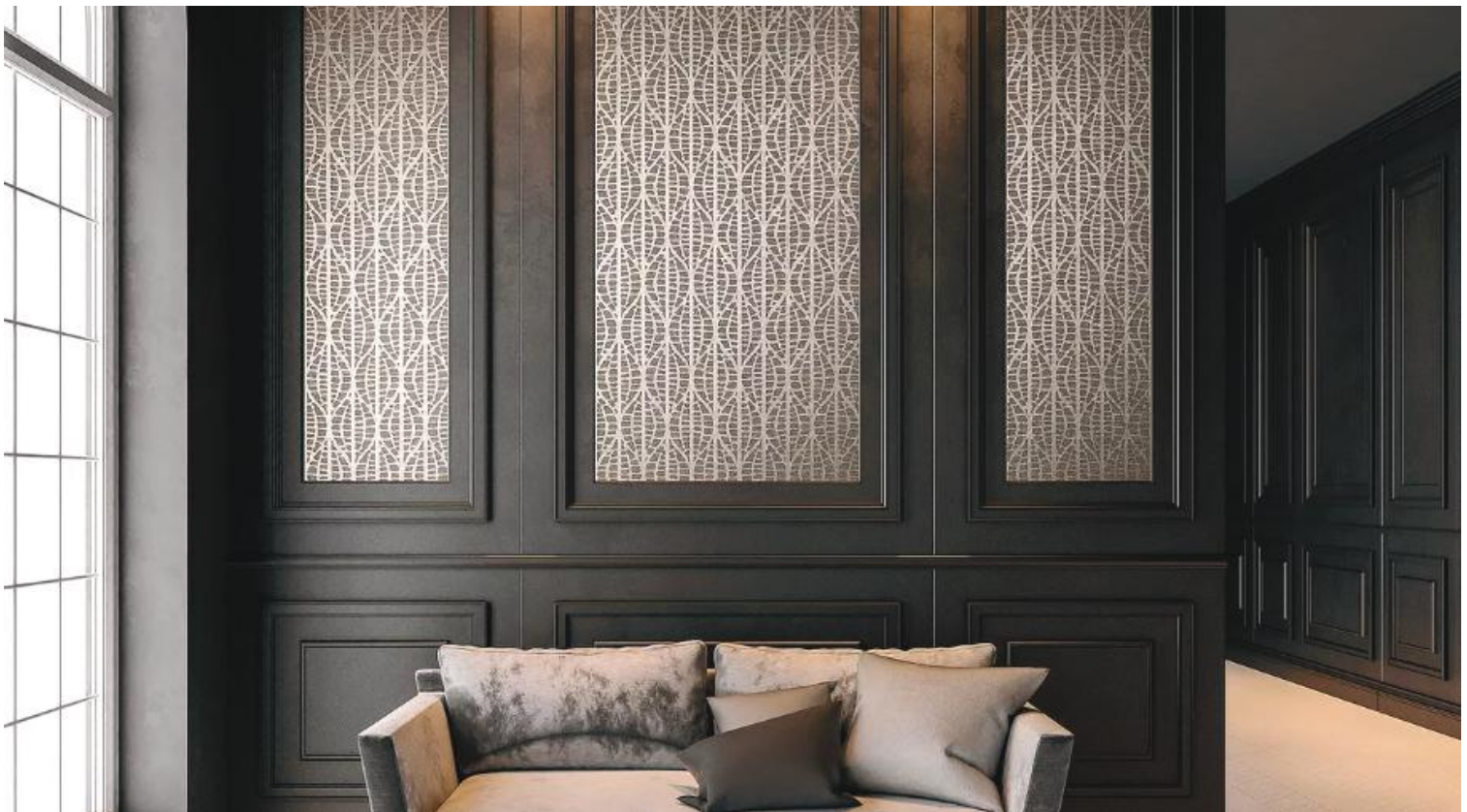
67-1822



67-1823



67-1824





seam

enlarged seam

repeat
H 22.8 cm - 9.0"
W 45.7 cm - 18.0"

SPECIFICATION : **PRIMAVERA 67-1820/-1824**, a multi-layer quality
Collection : 5 colours from Tapetex-67-Nonwoven

Physical properties

Composition : 70% FSC certified woodpulp, reinforced with 30% polyester.
Backing : Paper backing of 70% FSC certified woodpulp reinforced with 30% polyester.
Width : 137 cm = 54"
Weight : Approx. 360 gr/lm = 11.6 oz/lyd
Thickness : Approx. 0.60 mm
Hanging : On repeat, H22.8 cm - 9.0" W45.7 cm - 18.0"
Use a rubber roller instead of a spatula.
Precision trimmed for butt-joining by professional paper hangers.
Installation advice supplied with every roll.
Adhesive : Adhesive Tapetex PRO-1 or similar premixed heavy duty, clear vinyl adhesive, suitable for textile wallcovering.
Variation : There can be a variation between sample material and finished product.
Stock cuttings are available for approval.

Performance : See detailed results on our website.

Surface finish : A stain repellent finish prevents waterbased splashes penetrating and staining the material.
Periodic vacuuming is recommended to prevent dust from building up on the materials surface.
Lightfastness : Test result as per ISO 105-B02:2014, Heraeus original Hanau Xenotest.
LRV values : Testing as per BS 8493:2008+A1:2010, Datacolor DC500.
Fire rating : ASTM E84 Class 1 or A and EUROCLASS (B s1 d0).
Permeability rating : Test result 35.0 as per ASTM E96-12, Method B, Water Vapor Transmission.
Indoor air quality : ASTM D6196, D5197 and D5116, Environmental Chamber Test.
The testing followed UL 2821 "Greenguard Certification Program Method for Measuring and Evaluating Chemical Emissions".
REACH SVHC : Compliant as per Centexbel testing.
DoP No. : (CPR 305/2011), DOP-CPR-01

Sustainability

The nonwoven is FSC certified, FSC A000531.
In production, all energy sources are either green, wind or hydro based and all processes are waterbased. The products do not contain PVC, chlorine, plasticizers, heavy metals or harmful dyes.

Supply and packing

Delivery from stock by the full linear meter or full linear yard. The average piece length of this quality is approx. 50 linear meter or 55 linear yards. However, as is common within the textile industry, it is not possible to establish a standard roll length. The wallcovering is reeled on to a cardboard core, wrapped in polyethylene and protective end caps are fixed. Each roll is then packed in individual cardboard boxes or tubes, which are also made out of FSC certified woodpulp.

Harmonized System as per the World Customs Organization and Origin

Textile Wallcovering, paper backed: 5905.00. Made in the Netherlands.



Mirabel



67-1830



67-1831



67-1832



67-1833



67-1834



67-1835



67-1836



67-1837



67-1838



67-1839

SPECIFICATION : **MIRABEL 67-1830/-1839**, a multi-layer quality
Collection : 10 colours from Tapetex-67-Nonwoven

Physical properties

Composition : 60% FSC certified woodpulp, reinforced with 40% polyester.
Backing : Paper backing of 70% FSC certified woodpulp reinforced with 30% polyester.
Width : 137 cm = 54"
Weight : Approx. 360 gr/lm = 11.6 oz/lyd
Thickness : Approx. 0.60 mm
Hanging : Random
Precision trimmed for butt-joining by professional paper hangers.
Installation advice supplied with every roll.
Adhesive : Adhesive Tapetex PRO-1 or similar premixed heavy duty, clear vinyl adhesive, suitable for textile wallcovering.
Variation : There can be a variation between sample material and finished product.
Stock cuttings are available for approval.

Performance : See detailed results on our website.

Surface finish : A stain repellent finish prevents waterbased splashes penetrating and staining the material.
Periodic vacuuming is recommended to prevent dust from building up on the materials surface.
Lightfastness : Test result as per ISO 105-B02:2014, Heraeus original Hanau Xenotest.
LRV values : Testing as per BS 8493:2008+A1:2010, Datacolor DC500.
Fire rating : ASTM E84 Class 1 or A and EUROCLASS (B s1 d0).
Permeability rating : Test result 35.0 as per ASTM E96-12, Method B, Water Vapor Transmission.
Indoor air quality : ASTM D6196, D5197 and D5116, Environmental Chamber Test.
The testing followed UL 2821 "Greenguard Certification Program Method for Measuring and Evaluating Chemical Emissions".
REACH SVHC : Compliant as per Centexbel testing.
DoP No. : (CPR 305/2011), DOP-CPR-01

Sustainability

The nonwoven is FSC certified, FSC A000531.

In production, all energy sources are either green, wind or hydro based and all processes are waterbased. The products do not contain PVC, chlorine, plasticizers, heavy metals or harmful dyes.

Supply and packing

Delivery from stock by the full linear meter or full linear yard.

The average piece length of this quality is approx. 50 linear meter or 55 linear yards. However, as is common within the textile industry, it is not possible to establish a standard roll length.

The wallcovering is reeled on to a cardboard core, wrapped in polyethylene and protective end caps are fixed. Each roll is then packed in individual cardboard boxes or tubes, which are also made out of FSC certified woodpulp.

Harmonized System as per the World Customs Organization and Origin

Textile Wallcovering, paper backed: 5905.00. Made in the Netherlands.

tapetex wall materials



Tartano



67-1840



67-1841



67-1842

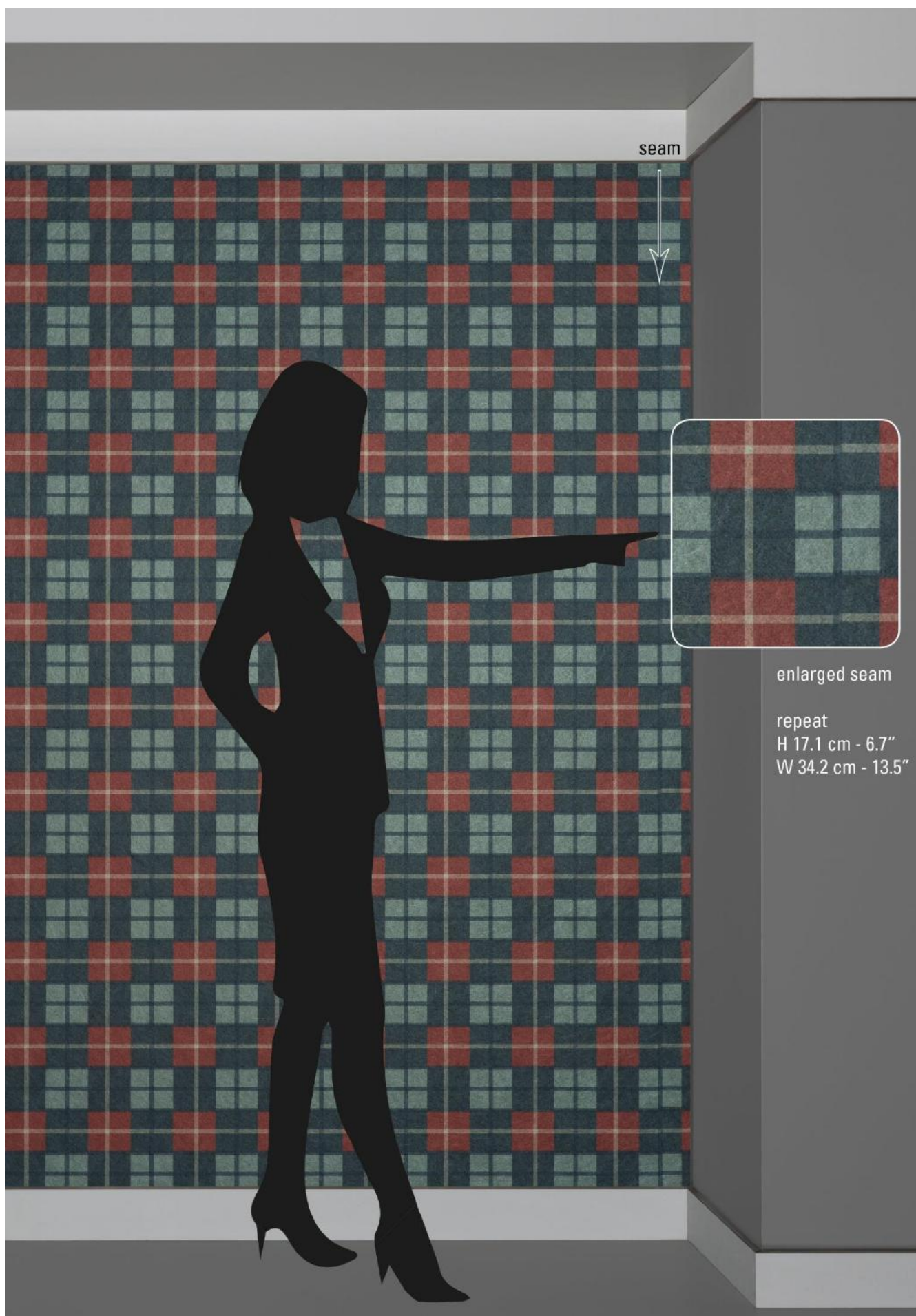


67-1843



67-1844





SPECIFICATION : **TARTANO 67-1840/-1844**, a multi-layer quality
Collection : 5 colours from Tapetex-67-Nonwoven

Physical properties

Composition : 60% FSC certified woodpulp, reinforced with 40% polyester.
Backing : Paper backing of 70% FSC certified woodpulp reinforced with 30% polyester.
Width : 137 cm = 54"
Weight : Approx. 360 gr/lm = 11.6 oz/lyd
Thickness : Approx. 0.50 mm
Hanging : On repeat, H17.1 cm - 6.7" W34.2 cm - 13.5"
Use a rubber roller instead of a spatula.
Precision trimmed for butt-joining by professional paper hangers.
Installation advice supplied with every roll.
Adhesive : Adhesive Tapetex PRO-1 or similar premixed heavy duty, clear vinyl adhesive, suitable for textile wallcovering.
Variation : There can be a variation between sample material and finished product.
Stock cuttings are available for approval.

Performance : See detailed results on our website.

Surface finish : A stain repellent finish prevents waterbased splashes penetrating and staining the material.
Periodic vacuuming is recommended to prevent dust from building up on the materials surface.
Lightfastness : Test result as per ISO 105-B02:2014, Heraeus original Hanau Xenotest.
LRV values : Testing as per BS 8493:2008+A1:2010, Datacolor DC500.
Fire rating : ASTM E84 Class 1 or A and EUROCLASS (B s1 d0).
Permeability rating : Test result 35.0 as per ASTM E96-12, Method B, Water Vapor Transmission.
Indoor air quality : ASTM D6196, D5197 and D5116, Environmental Chamber Test.
The testing followed UL 2821 "Greenguard Certification Program Method for Measuring and Evaluating Chemical Emissions".
REACH SVHC : Compliant as per Centexbel testing.
DoP No. : (CPR 305/2011), DOP-CPR-01

Sustainability

The nonwoven is FSC certified, FSC A000531.

In production, all energy sources are either green, wind or hydro based and all processes are waterbased. The products do not contain PVC, chlorine, plasticizers, heavy metals or harmful dyes.

Supply and packing

Delivery from stock by the full linear meter or full linear yard. The average piece length of this quality is approx. 50 linear meter or 55 linear yards. However, as is common within the textile industry, it is not possible to establish a standard roll length. The wallcovering is reeled on to a cardboard core, wrapped in polyethylene and protective end caps are fixed. Each roll is then packed in individual cardboard boxes or tubes, which are also made out of FSC certified woodpulp.

Harmonized System as per the World Customs Organization and Origin

Textile Wallcovering, paper backed: 5905.00. Made in the Netherlands.



Lino



67-1850



67-1851



67-1852



67-1853



67-1854



67-1855



67-1856



67-1857



67-1858



67-1859

SPECIFICATION : **LINO 67-1850/-1859**, a one-layer quality
Collection : 10 colours from Tapetex-67-Nonwoven

Physical properties

Composition : 70% FSC certified woodpulp, reinforced with 30% polyester.
Width : 137 cm = 54"
Weight : Approx. 220 gr/lm = 7.1 oz/lyd
Thickness : Approx. 0.40 mm
Hanging : Random
Precision trimmed for butt-joining by professional paper hangers.
Installation advice supplied with every roll.
Adhesive : Adhesive Tapetex PRO-1 or similar premixed heavy duty, clear vinyl adhesive, suitable for textile wallcovering.
Variation : There can be a variation between sample material and finished product.
Stock cuttings are available for approval.

Performance : See detailed results on our website.

Surface finish : A stain repellent finish prevents waterbased splashes penetrating and staining the material.
Periodic vacuuming is recommended to prevent dust from building up on the materials surface.
Lightfastness : Test result as per ISO 105-B02:2014, Heraeus original Hanau Xenotest.
LRV values : Testing as per BS 8493:2008+A1:2010, Datacolor DC500.
Fire rating : ASTM E84 Class 1 or A and EUROCLASS (B s2 d0).
Permeability rating : Test result 93.8 as per ASTM E96-12, Method B, Water Vapor Transmission.
Indoor air quality : ASTM D6196, D5197 and D5116, Environmental Chamber Test.
The testing followed UL 2821 "Greenguard Certification Program Method for Measuring and Evaluating Chemical Emissions".
REACH SVHC : Compliant as per Centexbel testing.
DoP No. : (CPR 305/2011), DOP-CPR-01

Sustainability

The nonwoven is FSC certified, FSC A000531.
In production, all energy sources are either green, wind or hydro based and all processes are waterbased. The products do not contain PVC, chlorine, plasticizers, heavy metals or harmful dyes.

Supply and packing

Delivery from stock by the full linear meter or full linear yard.
The average piece length of this quality is approx. 100 linear meter or 110 linear yards. However, as is common within the textile industry, it is not possible to establish a standard roll length.
The wallcovering is reeled on to a cardboard core, wrapped in polyethylene and protective end caps are fixed. Each roll is then packed in individual cardboard boxes or tubes, which are also made out of FSC certified woodpulp.

Harmonized System as per the World Customs Organization and Origin

Textile Wallcovering, paper backed: 5905.00. Made in the Netherlands.





67-1860



67-1861



67-1862



67-1863



67-1864



67-1865



67-1866



67-1867



67-1868



67-1869

SPECIFICATION : **ZAGARA 67-1860/-1869**, a one-layer quality
Collection : 10 colours from Tapetex-67-Nonwoven

Physical properties

Composition : 70% FSC certified woodpulp, reinforced with 30% polyester.
Width : 137 cm = 54"
Weight : Approx. 260 gr/lm = 8.4 oz/lyd
Thickness : Approx. 0.40 mm
Hanging : Random
Precision trimmed for butt-joining by professional paper hangers.
Installation advice supplied with every roll.
Adhesive : Adhesive Tapetex PRO-1 or similar premixed heavy duty, clear vinyl adhesive, suitable for textile wallcovering.
Variation : There can be a variation between sample material and finished product.
Stock cuttings are available for approval.

Performance : See detailed results on our website.

Surface finish : A stain repellent finish prevents waterbased splashes penetrating and staining the material.
Periodic vacuuming is recommended to prevent dust from building up on the materials surface.
Lightfastness : Test result as per ISO 105-B02:2014, Heraeus original Hanau Xenotest.
LRV values : Testing as per BS 8493:2008+A1:2010, Datacolor DC500.
Fire rating : ASTM E84 Class 1 or A and EUROCLASS (B s2 d0).
Permeability rating : Test result 93.8 as per ASTM E96-12, Method B, Water Vapor Transmission.
Indoor air quality : ASTM D6196, D5197 and D5116, Environmental Chamber Test.
The testing followed UL 2821 "Greenguard Certification Program Method for Measuring and Evaluating Chemical Emissions".
REACH SVHC : Compliant as per Centexbel testing.
DoP No. : (CPR 305/2011), DOP-CPR-01

Sustainability

The nonwoven is FSC certified, FSC A000531.
In production, all energy sources are either green, wind or hydro based and all processes are waterbased. The products do not contain PVC, chlorine, plasticizers, heavy metals or harmful dyes.

Supply and packing

Delivery from stock by the full linear meter or full linear yard.
The average piece length of this quality is approx. 50 linear meter or 55 linear yards. However, as is common within the textile industry, it is not possible to establish a standard roll length.
The wallcovering is reeled on to a cardboard core, wrapped in polyethylene and protective end caps are fixed. Each roll is then packed in individual cardboard boxes or tubes, which are also made out of FSC certified woodpulp.

Harmonized System as per the World Customs Organization and Origin

Textile Wallcovering, paper backed: 5905.00. Made in the Netherlands.



Sashiko



67-1870



67-1871



67-1872

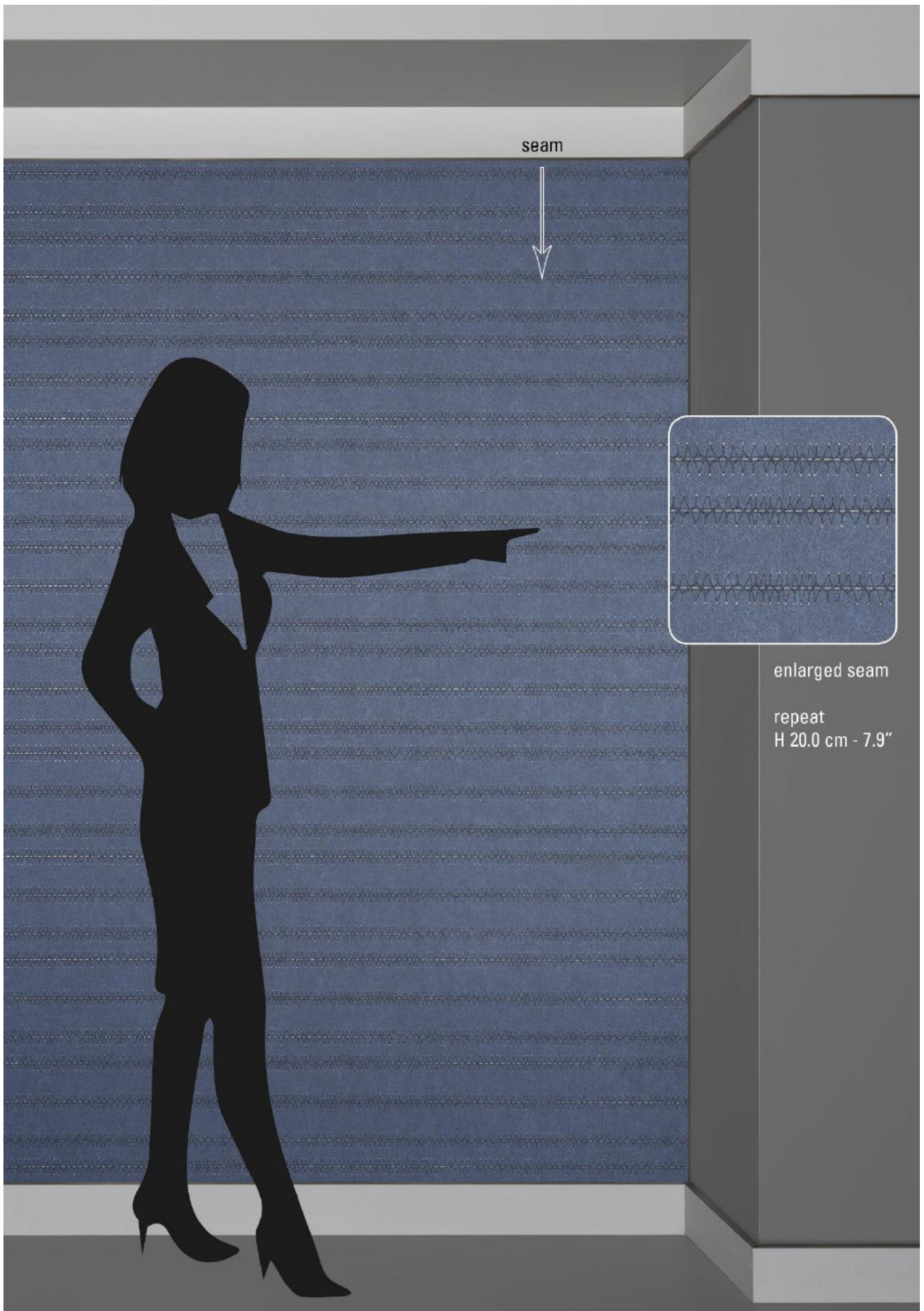


67-1873



67-1874





SPECIFICATION : **SASHIKO 67-1870/-1874**, a multi-layer quality
Collection : 5 colours from Tapetex-67-Nonwoven

Physical properties

Composition : 60% FSC certified woodpulp, reinforced with 40% polyester.
Backing : Paper backing of 70% FSC certified woodpulp reinforced with 30% polyester.
Width : 137 cm = 54"
Weight : Approx. 540 gr/lm = 17.4 oz/lyd
Thickness : Approx. 0.60 mm
Hanging : On repeat, H20.0 cm - 7.9"
Use a rubber roller instead of a spatula.
Precision trimmed for butt-joining by professional paper hangers.
Installation advice supplied with every roll.
Adhesive : Adhesive Tapetex PRO-1 or similar premixed heavy duty, clear vinyl adhesive, suitable for textile wallcovering.
Variation : There can be a variation between sample material and finished product. Stock cuttings are available for approval.

Performance : See detailed results on our website.

Surface finish : A stain repellent finish prevents waterbased splashes penetrating and staining the material.
Periodic vacuuming is recommended to prevent dust from building up on the materials surface.
Lightfastness : Test result as per ISO 105-B02:2014, Heraeus original Hanau Xenotest.
LRV values : Testing as per BS 8493:2008+A1:2010, Datacolor DC500.
Fire rating : ASTM E84 Class 1 or A and EUROCLASS (B s1 d0).
Permeability rating : Test result 35.0 as per ASTM E96-12, Method B, Water Vapor Transmission.
Indoor air quality : ASTM D6196, D5197 and D5116, Environmental Chamber Test.
The testing followed UL 2821 "Greenguard Certification Program Method for Measuring and Evaluating Chemical Emissions".
REACH SVHC : Compliant as per Centexbel testing.
DoP No. : (CPR 305/2011), DOP-CPR-01

Sustainability

The nonwoven is FSC certified, FSC A000531.
In production, all energy sources are either green, wind or hydro based and all processes are waterbased. The products do not contain PVC, chlorine, plasticizers, heavy metals or harmful dyes.

Supply and packing

Delivery from stock by the full linear meter or full linear yard. The average piece length of this quality is approx. 50 linear meter or 55 linear yards. However, as is common within the textile industry, it is not possible to establish a standard roll length. The wallcovering is reeled on to a cardboard core, wrapped in polyethylene and protective end caps are fixed. Each roll is then packed in individual cardboard boxes or tubes, which are also made out of FSC certified woodpulp.

Harmonized System as per the World Customs Organization and Origin

Textile Wallcovering, paper backed: 5905.00. Made in the Netherlands.



SPECIFICATION : **CANVASA 67-1880/-1889**, a one-layer quality
Collection : 10 colours from Tapetex-67-Nonwoven

Physical properties

Composition : 70% FSC certified woodpulp, reinforced with 30% polyester.
Width : 137 cm = 54"
Weight : Approx. 360 gr/lm = 11.6 oz/lyd
Thickness : Approx. 0.50 mm
Hanging : Random
Precision trimmed for butt-joining by professional paper hangers.
Installation advice supplied with every roll.
Adhesive : Adhesive Tapetex PRO-1 or similar premixed heavy duty, clear vinyl adhesive, suitable for textile wallcovering.
Variation : There can be a variation between sample material and finished product.
Stock cuttings are available for approval.

Performance : See detailed results on our website.

Surface finish : A stain repellent finish prevents waterbased splashes penetrating and staining the material.
Periodic vacuuming is recommended to prevent dust from building up on the materials surface.
Lightfastness : Test result as per ISO 105-B02:2014, Heraeus original Hanau Xenotest.
LRV values : Testing as per BS 8493:2008+A1:2010, Datacolor DC500.
Fire rating : ASTM E84 Class 1 or A and EUROCLASS (B s2 d0).
Permeability rating : Test result 93.8 as per ASTM E96-12, Method B, Water Vapor Transmission.
Indoor air quality : ASTM D6196, D5197 and D5116, Environmental Chamber Test.
The testing followed UL 2821 "Greenguard Certification Program Method for Measuring and Evaluating Chemical Emissions".
REACH SVHC : Compliant as per Centexbel testing.
DoP No. : (CPR 305/2011), DOP-CPR-01

Sustainability

The nonwoven is FSC certified, FSC A000531.
In production, all energy sources are either green, wind or hydro based and all processes are waterbased. The products do not contain PVC, chlorine, plasticizers, heavy metals or harmful dyes.

Supply and packing

Delivery from stock by the full linear meter or full linear yard.
The average piece length of this quality is approx. 50 linear meter or 550 linear yards. However, as is common within the textile industry, it is not possible to establish a standard roll length.
The wallcovering is reeled on to a cardboard core, wrapped in polyethylene and protective end caps are fixed. Each roll is then packed in individual cardboard boxes or tubes, which are also made out of FSC certified woodpulp.

Harmonized System as per the World Customs Organization and Origin

Textile Wallcovering, paper backed: 5905.00. Made in the Netherlands.

