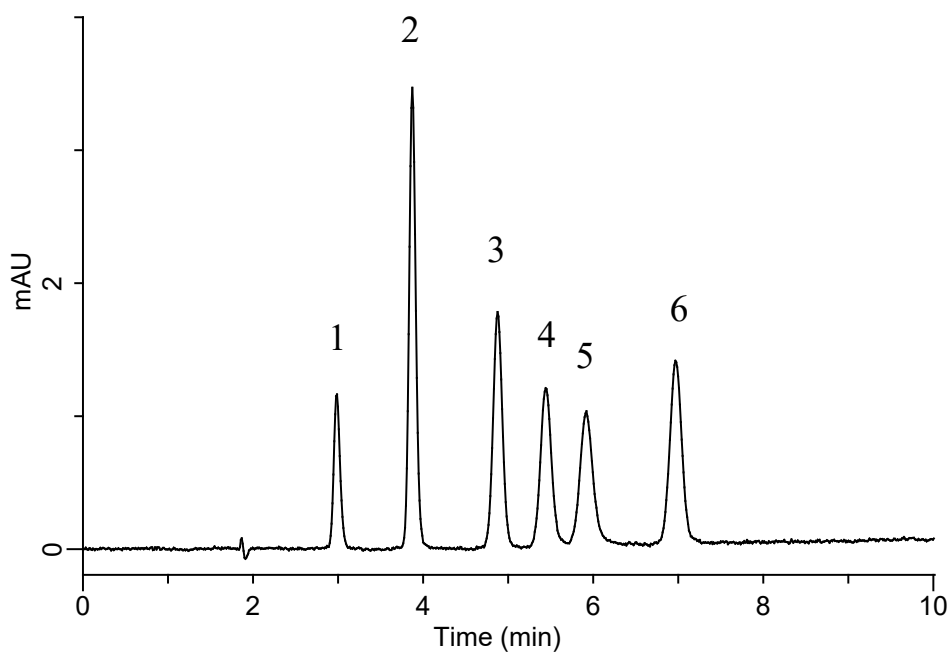


InertSearch for LC

Inertsil Applications

Analysis of ATP related compounds

Data No. LB685-1054



Conditions

System : Chromaster HPLC system
Column : InertSustain AX-C18
(5 μ m, 150 x 4.6 mm I.D.)
Column Cat. No. : 5020-91014
Eluent : 20 mM K_2HPO_4 in H_2O (pH7.0, H_3PO_4)
Flow Rate : 1.0 mL/min
Col. Temp. : 40 $^{\circ}C$
Detection : UV 260 nm
Injection Vol. : 10 μ L
Sample : Standard

Analyte:

1. 5'-IMP 5 mg/L
2. Hypoxanthine 5 mg/L
3. 5'-AMP 5 mg/L
4. 5'-ADP 5 mg/L
5. 5'-ATP 5 mg/L
6. Inosine 5 mg/L