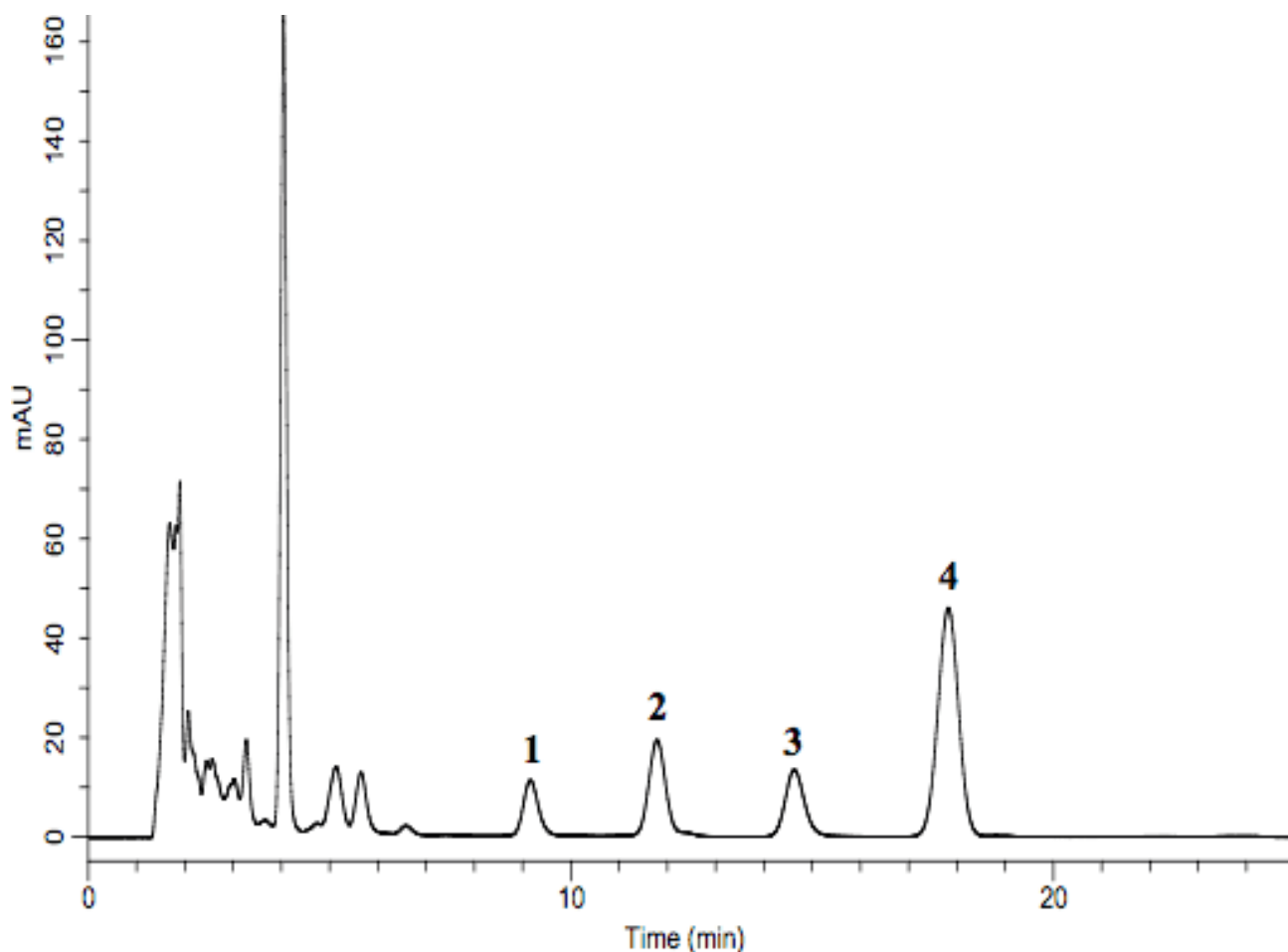


## Analysis of Toad Venom Extract (Under the Condition of Japanese Pharmacopoeia)

Data No. LA556-0698



System :GL-7400 system

Column :Inertsil ODS-P (5  $\mu$  m, 150 $\times$ 4.6 mm I.D.)

Column Cat. No.:

Eluent :A) CH<sub>3</sub>CN

B) 0.1 % H<sub>3</sub>PO<sub>4</sub>

A/B = 45/55, v/v

Flow rate :0.8 mL/min

Col. Temp. :40 °C

Detection :PDA 300 nm (GL-7452A PDA detector)

Injection Vol. :10  $\mu$  L

Sample :Toad Venom

Solutes : 1. Bufalin

2. Cinobufagin

3. Resibufogenin

4. Indomethacin