

# CAMP HENRY



EXTEND  
CAMPAIGN



2022-2027

# EXTEND

---

This capital campaign will position Camp Henry to be able to **Extend** life changing experiences to more campers and guests and beyond our current program offerings.

Expanding and enhancing Camp Henry's Facilities will allow thousands of additional campers and guests to experience Camp Henry each year.

We have identified 6 Key Projects for this Campaign:

- Welcome Center
- Health Lodge
- Mountain Bike Trails & Terrain Park
- Covered Riding Arena
- Frontier Bathhouse
- Staff Housing





### Welcome Center

2024



### Health Lodge

2025



### Mountain Bike Trails and Terrain Park

2026



### Covered Riding Arena

85% Completed



### Frontier Bathhouse

Completed



### Staff Housing

Completed

## STRATEGIC OBJECTIVES

---

Two of Camp Henry's key Strategic Objectives include:

- **Increase the number of people** that have a Camp Henry experience
- **Improve and enhance** the Camp Henry experience

For the majority of Camp Henry's 86 year history, we have primarily served campers during the summer months.

Major upgrades and additions to our lodging, dining, and program spaces have made it possible for us to serve campers and guests 365 days of the year. Over the past 20 years we have been able to increase the number of campers and guests we have been able to serve during the spring and fall, including serving over 9,000 year round campers and guests in 2022. We are excited to be able to welcome even more campers and guests to Camp Henry in 2023 and beyond.



Adding additional programs and enhancing our existing programs, while increasing our on-site staff housing capacity will significantly impact our ability to increase the number of people that we can serve.

We have outgrown Millar Center, which was built in 1981, and was intended to have 1 office, 3 bedrooms, and an apartment for the summer camp director. Forty years ago there were no thoughts of Camp Henry being open year-round. We have converted the 3 bedrooms into offices, have staff members working in hallways and under the staircase, and have retrofitted a summer camp director's apartment as best we can into year-round staff housing.

Yet, with 18 full-time, year-round staff members, including 13 that live on-site, we find ourselves in desperate need of a larger and more welcoming office space – as well as in need of additional housing for our amazing and dedicated year-round staff members.



# WELCOME CENTER - 2024

---

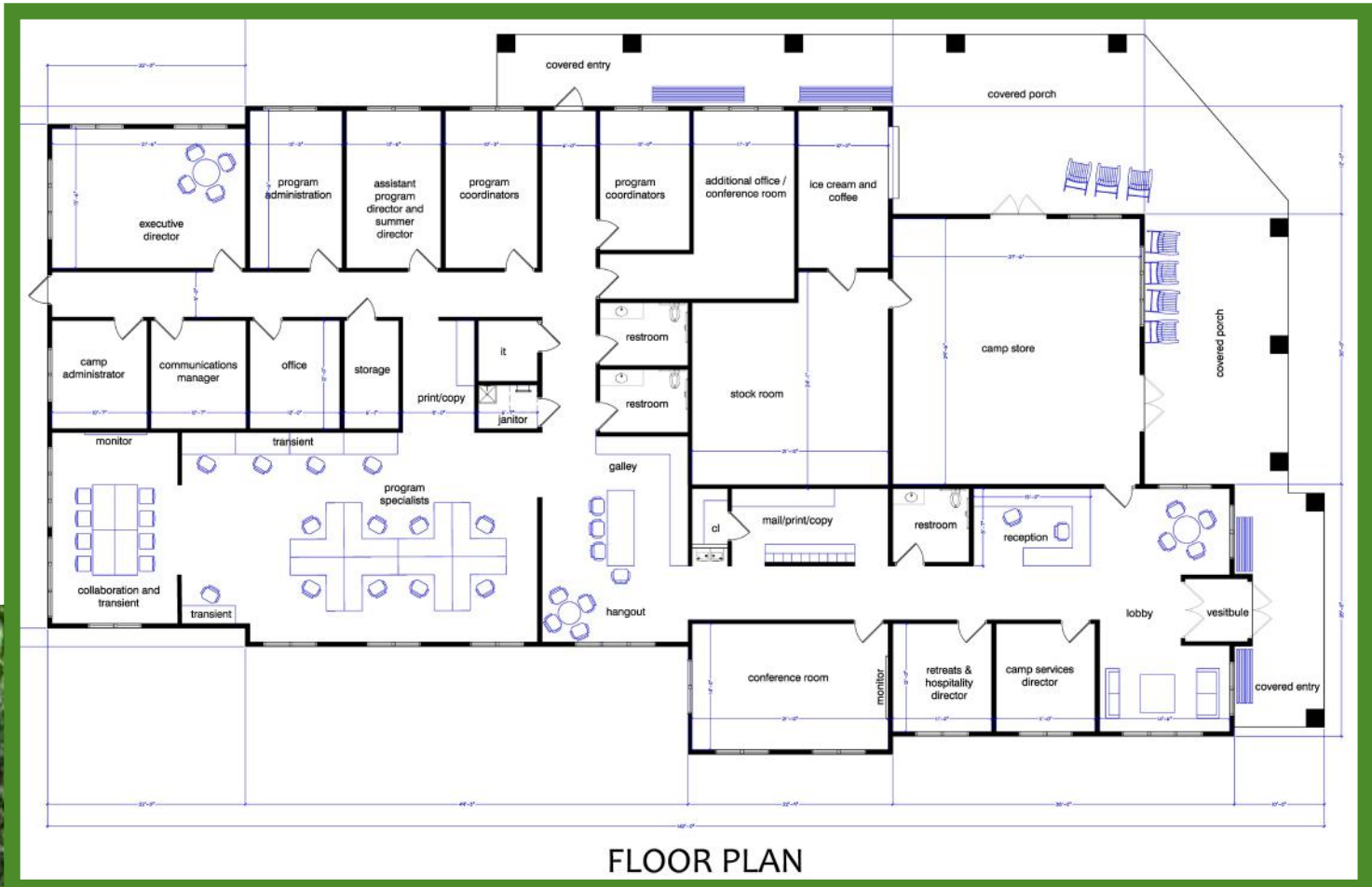
A new Welcome Center will be a dramatic and welcome addition at Camp Henry.

The Welcome Center will include:

- Office and work space for over 20 staff members
- A Reception and Welcome Space
- A new Camp Store and Store Stock Room
- A Conference Room and Collaboration Areas
- An Ice Cream and Coffee Counter
- A Workroom, Kitchen Area, Bathrooms, and Storage Areas
- Covered Porches and Decks with Gathering Spaces

The Existing Office Building will be removed, opening up a view of the lake when arriving at camp, and the new Welcome Center will provide a prominent and central focal point for campers and guests as they arrive and begin their life changing experiences at camp.





## HEALTH LODGE - 2025

---

Each summer our Health Directors and Volunteer Nurses attend to the safety and wellbeing for over 2,200 summer campers and staff members. In addition to carefully distributing medications, counting camper mosquito bites, identifying unique rashes, and applying countless band-aids, the Health Directors provide a space for campers that are struggling with missing home or just need a respite space where they can relax and refresh so they can hopefully reengage with camp. Our new Health Lodge will provide a brand new Health Center that will be immensely helpful as we care for campers and staff members and provide the facilities to support our Health Directors and Volunteers.

In addition, the new Health Lodge will provide 12 year-round bedrooms. These wonderful lodging spaces will help to not only replace the 3 bedrooms we will lose when the current office building comes down but will provide excellent space for Leadership Staff members, Health Directors, Volunteer Nurses, Nursing Interns, and additional year round staff members.







**FIRST FLOOR**



## MOUNTAIN BIKE TRAILS & TERRAIN PARK - 2026

---

DeVries Woods, our 80 acre parcel that has intentionally been left undeveloped, is one of the most prized natural resources at Camp Henry. Campers and guests are able to enjoy the hiking and horse trails in DeVries wood as well as camp overnight at one of several campout locations. In recent years we have added some awesome A-Frame Shelters as well as a new Sugar Shack for our Maple Syrup Program.

We are excited to be developing some outstanding loop Mountain Bike Trails as well as a Mountain Bike Terrain Park. These resources will provide exceptional opportunities for additional campers and guests to enjoy these human powered activities within this beautiful, natural area.

With the World Class Dragon 47-mile linear Mountain Bike trail coming to Newaygo County, this is an exceptional time for Camp Henry to be adding Mountain Bike programs to our list of program offerings.



## COVERED RIDING ARENA - 85% COMPLETED

---

Our new Covered Riding Arena will allow us to utilize our herd of 21 horses on a year round basis. This will significantly increase the number of people we can serve and that can enjoy a Camp Henry horse experience. In addition, it will make it possible for our staff to work our horses year round, helping to keep them in shape and prepared to provide trail rides, arena work, and horse experiences for our campers and guests year round.

The Covered Riding Arena will also be an excellent resource that can be utilized by our summer campers and Frontier campers during rainy days during summer camp. By 2024, we anticipate incorporating a few indoor stalls where horses can receive vet care during the winter months or inclement weather and where horses that need a little extra TLC can be housed during the coldest of winter days and nights. We will also be adding some additional stalls, a tack room, a wash bay, and completing the reception area with bathrooms.

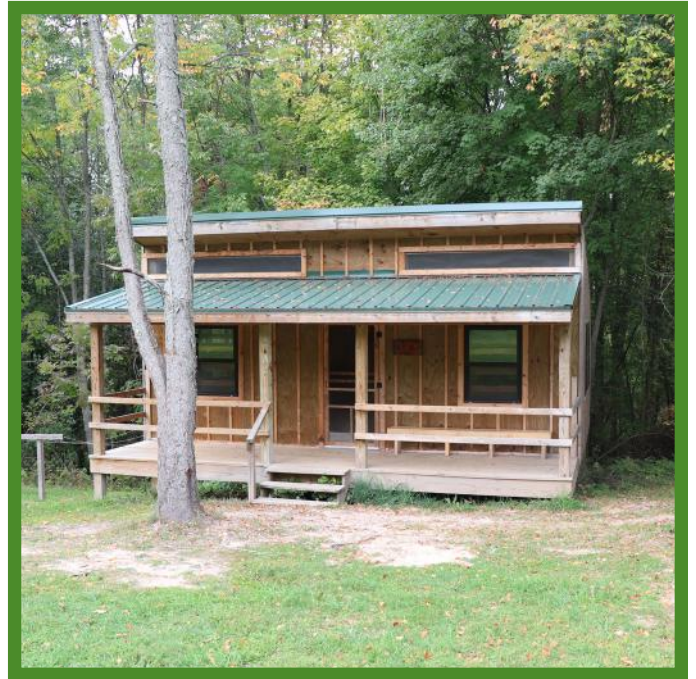


## FRONTIER BATHHOUSE - COMPLETED

---

We added our new Frontier Cabins: Joy, Luck, and Brave, back in 2017, and they have been wonderful additions to Camp Henry. These cabins provide fantastic lodging for our 200 Frontier campers and staff members each summer. We also continue to have more and more year round groups that are interested in utilizing Frontier Village and these three cabins during the non-summer months as well.

Yet, the camper and guest experience had been impacted by not having bathroom facilities in Frontier Village. Adding a Frontier Bathhouse to Frontier Village in 2023 significantly enhanced the experience for our campers and guests, and made it possible for us to provide more Camp Henry experiences, as we are able to utilize this Village well beyond the summer camp season.



## STAFF HOUSING - COMPLETE

---

Staff members are the most valuable resource at Camp Henry. While we are blessed with incredible facilities and outstanding programs – it is the staff members that bring Camp Henry to life and who deliver amazing and life changing experiences for our campers and guests.

Additional staff housing is necessary to help provide adequate on-site housing for our staff members that often work from the time they wake up until the time they go to bed. We also have staff members on-call 24 hours a day whenever a camper or guest is in camp.

New and additional staff housing is critical in helping Camp Henry recruit and retain exceptional staff members. In addition, by having more housing designed for groups of people, not only will we be able to house multiple staff members, we can also partner with volunteer and service organizations, such as Americorp volunteers and college interns, willing to contribute time and energy to Camp Henry.

Construction on Hank's House was finished in 2022, and additional Staff Housing will be provided once the Health Lodge is completed.



## SEEKING TO PARTNER

---

We are extremely thankful to a group of Lead Donors that have already helped raise an initial \$1 million toward our goal of \$5 million.

We are now seeking to partner with additional donors, foundations, and organizations that are willing support these vital projects by considering a one-time gift or grant or making a pledge to make contributions over a 5 year period – from 2023 through 2027.

Visit our Donation Page at [CAMPHENRY.ORG/donate](https://CAMPHENRY.ORG/donate) to jump on board as one of our donors, or reach out to Jake at [jake@camphenry.org](mailto:jake@camphenry.org); if you should have any questions or would like to connect further about making a one-time or multi-year contribution.



## Anticipated Expenses include:

• Welcome Center	\$1,875,000	Anticipated 2024
• Health Lodge	\$1,975,000	Anticipated 2025
• Mountain Bike Park & Trails	\$95,000	Anticipated 2026
• Covered Riding Arena	\$650,000	85% Completed 2023
• Frontier Bathhouse	\$225,000	Completed 2023
• Staff Housing	\$180,000	Completed 2022

**Total** **\$5,000,000**



**Mission Statement:** Camp Henry provides life changing experiences for all in a Christian environment.



# CAMPHENRY

5575 Gordon Ave. Newaygo, MI 49337  
jake@camphenry.org | 616.717.5565

