

# 2209 JEFFREY DRIVE

NORFOLK, VIRGINIA 23518

MLS 10574880

**A HOME THAT INVITES  
YOU TO STAY**

TARRALTON




757-524-0417

JENNIFER.DAWN@RWTOWNE.COM

JENNIFERDAWNREALESTATE.COM

**BERKSHIRE  
HATHAWAY**  
HOMESERVICES

RW TOWNE  
REALTY  


TRUST  CONNECTION  COMMUNITY



EXPECT EXCEPTIONAL



# 2209 Jeffrey Drive

Charming Move-In Ready Home

## Square Footage

1,778 sq ft

## Bedrooms

4

## Bathrooms

2 Full

## Year Built

1953

## Lot Size

0.33 acres

## Features

Updated Kitchen  
New Carpeting  
Fresh Paint Throughout  
Large Primary Suite with  
separate entrance

## Amenities Nearby

Parks  
Green Spaces

## Neighborhood Highlights

Tarrallton offers the perfect balance of suburban comfort and city convenience, making it a sought-after community for those who value both tranquility and accessibility. With easy access to major roads, shopping, dining, and top-rated schools, daily life is effortless. A centrally located community park and recreation center provide spaces for outdoor fun, fitness programs, and neighborhood gatherings, fostering a strong sense of connection. Military families appreciate the short commute to nearby bases, while professionals and families alike enjoy the convenience of being close to work, entertainment, and everyday essentials.

For those who love the outdoors, Tarrallton is just minutes from parks, trails, and waterfront escapes, offering the perfect setting for relaxation and adventure. Whether it's a morning jog, an afternoon on the water, or a weekend exploring local arts and culture, everything you need is within reach. With a welcoming atmosphere and a true sense of community, *Tarrallton isn't just a neighborhood—it's a place to call home.*



## LET'S GET YOU HOME

---

### A Cozy, Versatile Haven in Norfolk

*There's something special about a home that feels like home the moment you come in.* The warmth of hardwood floors underfoot, the golden afternoon light filtering through newly updated windows, the easy flow from one inviting space to the next—it all comes together in a way that just makes sense. Tucked into a peaceful Norfolk neighborhood, this single-story home is full of charm, thoughtful updates, and quiet moments waiting to be enjoyed. The front facade welcomes you with a friendly invitation to pause and unwind, while inside, the open layout makes it easy to move effortlessly from the kitchen to the cozy living spaces beyond.

The kitchen itself is a perfect blend of function and character, featuring refreshed cabinetry, sleek granite countertops, and stainless steel appliances—a space designed for both morning coffee rituals and dinner with friends. Around the corner, the primary retreat is a true getaway, tucked into its own private wing with a separate entrance and personal living space—whether for guests, a quiet home office, or an in-law suite, this flexible layout allows you to define it on your terms.

And then, there's the backyard—a haven of mature trees and peaceful greenery. It's the kind of space where weekends are spent lounging under the pergola, fire table glowing as laughter lingers in the air. A 320-square-foot wired workshop is ready for creative projects, DIY dreams, or simply storing all the things that make a house feel like home.

This isn't just a house. It's the place where slow Sunday mornings happen, where you enjoy afternoon shade from a huge old, storybook tree in the backyard, where you finally have the space to create, breathe, and be. It's all here, waiting for you to step inside.

What's Nearby?

- Local parks and green spaces perfect for fresh air and afternoon walks
- Coffee shops, shopping, and dining just minutes away
- Easy access to Norfolk Naval Base and Little Creek for convenience without the commute stress
- A welcoming neighborhood that just feels right

Maybe this is where your next chapter begins. Are you ready to come home?



2209 Jeffrey  
Drive

NORFOLK

---

The Kind of Home That  
Feels Just Right



# LET'S GET YOU HOME...



A HOME THAT INVITES YOU TO STAY



# 2209 JEFFREY DRIVE TAKE A LOOK AROUND...



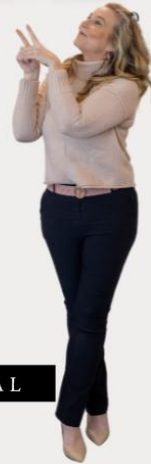
2209 JEFFREY DRIVE  
NORFOLK

LET'S GET  
YOU HOME!

*Jennifer Dawn*  
JENNIFER D HOLDS THE KEY  
757-524-0417  
JENNIFERDAWNREALESTATE.COM

BERKSHIRE HATHAWAY | RW TOWNE  
HOMESERVICES | REALTY

EXPECT EXCEPTIONAL



## *A Home That Feels Just Right*

Every home has a feeling, and from the moment you step inside, you'll know—this one is something special. Sunlight pours through large windows, accentuating the clean lines, warm tones, and thoughtful design that make every space feel inviting. The open-concept layout creates a seamless flow from the main living areas to the outdoor retreat, offering both functionality and charm. Whether you're looking for a place to unwind, entertain, or simply feel at home, this property is designed to meet you where you are.

Press play to experience it for yourself. Then, schedule your private tour and take the next step toward home.

A HOME THAT INVITES YOU TO STAY



## WHERE COMFORT MEETS CONVERSATION



Step into a space where warmth and elegance meet. Gleaming hardwood floors, recessed lighting, and natural light pouring through French doors create an inviting ambiance. With a seamless flow to the kitchen, this thoughtfully designed living area is perfect for both everyday comfort and effortless entertaining. A home that truly invites you to stay.

A HOME THAT INVITES YOU TO STAY



## A SPACE TO UNWIND, CONNECT, AND STAY AWHILE



Designed for Living, Made for Staying.



A HOME THAT INVITES YOU TO STAY



# A KITCHEN THAT BRINGS PEOPLE TOGETHER

Designed for Gathering, Styled for Living



This stunning kitchen is the heart of the home, where thoughtful design meets effortless function. Bright and open, it features crisp white cabinetry, modern stainless steel appliances, and an inviting layout perfect for both quiet mornings and lively gatherings. A space designed for connection, where every meal feels like home.

**A HOME THAT INVITES YOU TO STAY**





# THE HEART OF THE HOME



WHERE GATHERINGS BEGIN  
& MEMORIES ARE MADE

**A kitchen designed to inspire. Modern updates blend seamlessly with timeless details, featuring sleek countertops, custom cabinetry, and a spacious layout perfect for both everyday meals and entertaining. Expansive windows welcome natural light, enhancing the heart of the home with warmth and elegance. A space where culinary creativity meets comfort.**



**A HOME THAT INVITES YOU TO STAY**





Designed for Comfort,  
Styled for Living.



A HOME THAT INVITES YOU TO STAY



# A WARM WELCOME AWAITS



STEP INSIDE  
&  
INSTANTLY  
FEEL AT  
HOME

**This inviting entryway sets the tone for a home filled with warmth and comfort. A thoughtfully designed niche adds charm and functionality, creating a welcoming space to pause and settle in. Whether greeting guests or returning after a long day, this is a space that truly says ‘welcome home.’**



**A HOME THAT INVITES YOU TO STAY**



A PRIVATE ESCAPE WITH ENDLESS POSSIBILITIES.

# A PRIVATE RETREAT DESIGNED FOR COMFORT & POSSIBILITY



A HOME THAT INVITES YOU TO STAY



## A SUITE THAT FEELS LIKE HOME—AND SO MUCH MORE.

Tucked away for ultimate privacy, this expansive primary suite offers more than just a place to rest—it's a retreat. Featuring its own living area, separate entrance, and ensuite bath, this space is perfect for those seeking flexibility. Whether it's a cozy lounge, a home office, or a private guest retreat, this suite adapts to your lifestyle effortlessly.



A HOME THAT INVITES YOU TO STAY



# A PRIVATE & PEACEFUL GUEST WING



This dedicated guest wing offers three private suites, each featuring new windows and plush carpeting for a cozy and welcoming feel. With ample space and thoughtful design, these rooms provide the perfect retreat for guests, a home office setup, or flexible living arrangements. A peaceful sanctuary, ready to fit your needs.



A HOME THAT INVITES YOU TO STAY



## A GUEST BATH DESIGNED TO IMPRESS



**Crisp, modern finishes and thoughtful details create a guest bathroom that feels both stylish and serene. Sleek tilework, floating shelves, and a contemporary vanity provide the perfect blend of beauty and function. A space designed for both comfort and elegance.**



## ENDLESS POSSIBILITIES IN THIS VERSATILE FLEX SPACE

A SPACE THAT ADAPTS TO YOUR LIFESTYLE.

This beautifully converted space offers endless possibilities to fit your lifestyle. Whether you're dreaming of a home office, fitness room, playroom, or creative retreat, this flex space provides the perfect canvas. With natural light streaming in and a thoughtful layout, it's ready to adapt to whatever you need next.



A HOME THAT INVITES YOU TO STAY





## AN OUTDOOR ESCAPE MADE FOR RELAXATION & ENTERTAINING



## STEP OUTSIDE & SAVOR THE MOMENT

A seamless extension of the home, this inviting patio and pergola create a private outdoor retreat. Whether enjoying a quiet morning coffee or hosting lively gatherings, this space offers the perfect setting to unwind, entertain, and soak in the fresh air—all just steps from the living room's French doors.

A HOME THAT INVITES YOU TO STAY



## A PRIVATE BACKYARD RETREAT WITH ENDLESS POSSIBILITIES



### NATURE, SPACE & SERENITY—RIGHT IN YOUR OWN BACKYARD

Tucked beneath the shade of mature trees, this spacious backyard offers a peaceful retreat, perfect for relaxing or creating. At its heart, a wired 320 sq. ft. workshop provides endless possibilities—whether you dream of a studio, home office, or private getaway. A backyard designed for both inspiration and relaxation.

**A HOME THAT INVITES YOU TO STAY**



## UNDER THE CANOPY: A BACKYARD STEEPED IN CHARACTER & CONNECTION



**Framed by the magnificent presence of mature trees, this backyard offers a setting like no other. Their intricate trunks tell a story of time, strength, and beauty—creating the perfect backdrop for quiet reflection or lively conversation. Gather around the fire table under the dappled light of the canopy, where every season brings a new way to enjoy the outdoors. A space designed for both solitude and connection, waiting for its next chapter.**

**A HOME THAT INVITES YOU TO STAY**





**A HOME THAT INVITES YOU TO STAY**





**A HOME THAT INVITES YOU TO STAY**







# GET TO KNOW THE NEIGHBORHOOD

Tarrallton offers the perfect blend of suburban charm and city convenience, with easy access to parks, top-rated schools, shopping, and military bases. A strong sense of community, outdoor recreation, and nearby waterfront escapes make it an ideal place to call home.

**A HOME THAT INVITES YOU TO STAY**





# Neighborhood Eats and Treats



## FOOD *Report*

2209 Jeffrey Drive

### Good Eats BY CATEGORY

AMERICAN .....	14
FAST FOOD .....	13
ASIAN .....	13
ITALIAN .....	0
PIZZA .....	11
INTERNATIONAL .....	6
SEAFOOD .....	9
BARBECUE .....	4
CAFES, COFFEE & TEA .....	4
CHINESE .....	4
OTHER .....	10

This home is located near 88 moderately priced restaurants and has an *average* variety of cuisines.

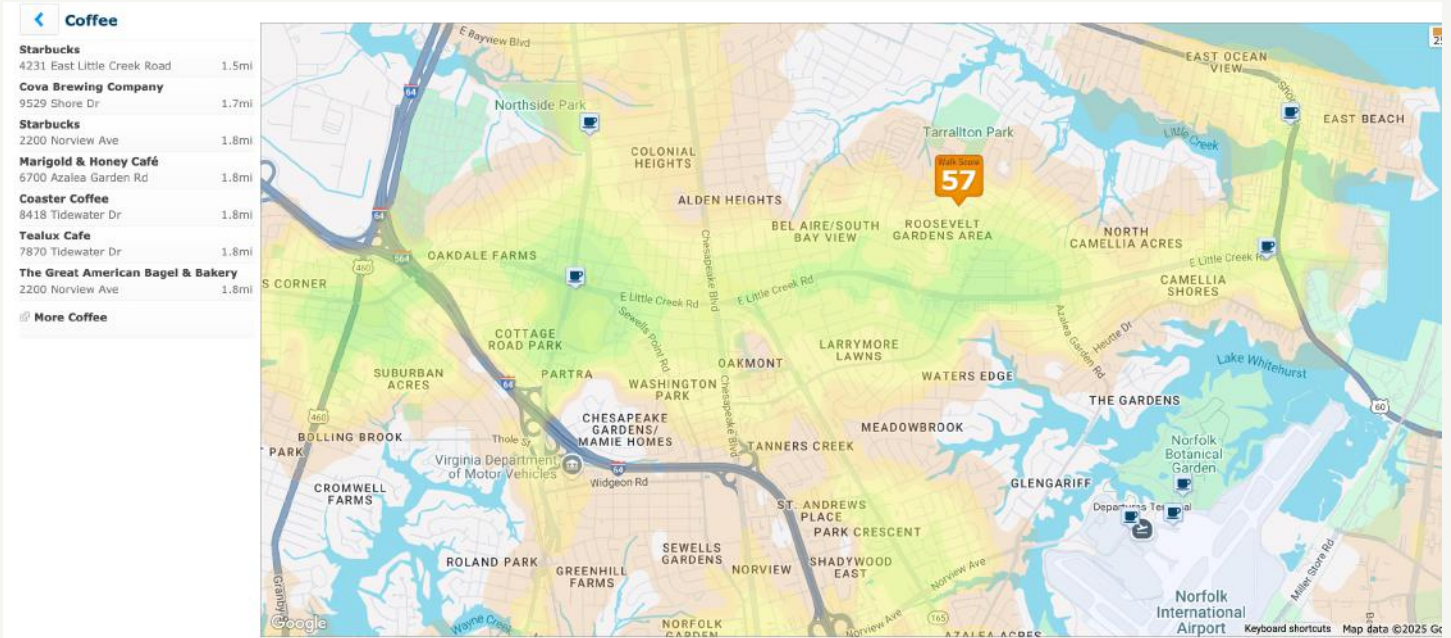
**95**

★ ★ ★ ★ +

within 5 miles

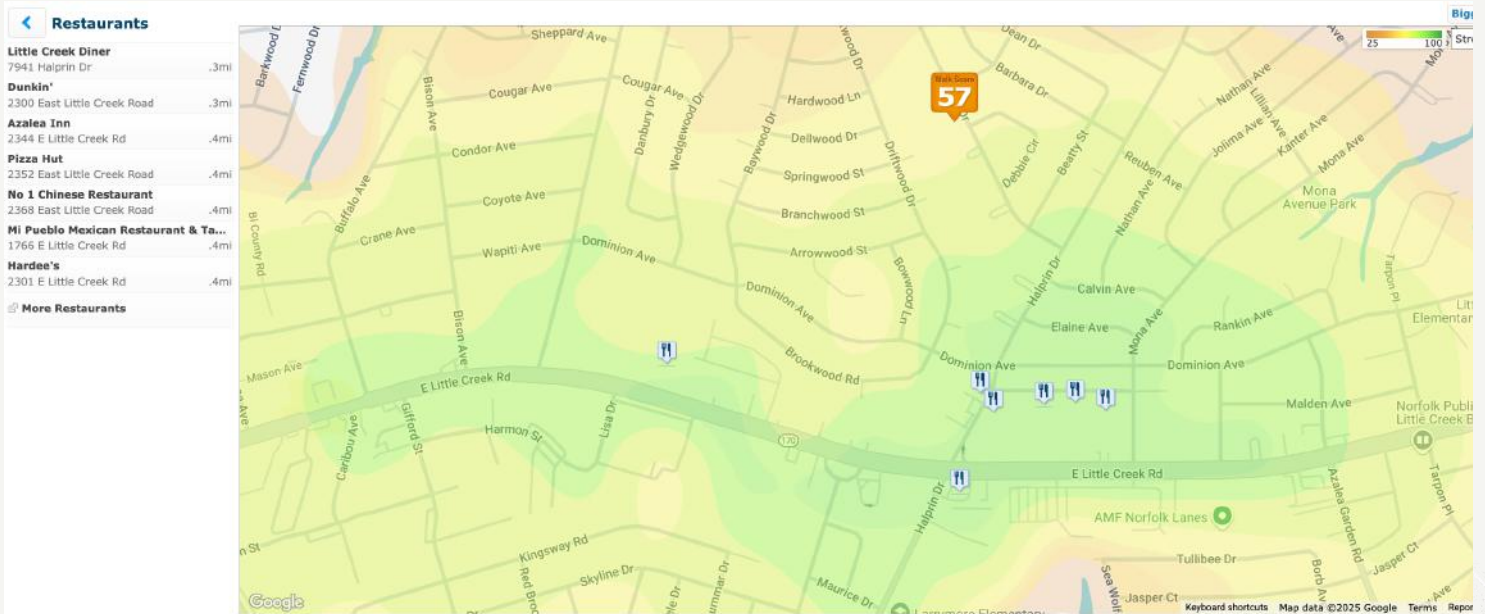
\$	59
\$\$	29
\$\$\$	3
\$\$\$\$	0





### A Taste of Community – Dining & Coffee Nearby

Living in this neighborhood means having a variety of coffee shops and dining options just minutes from your doorstep. Whether you're grabbing a morning coffee, enjoying a casual lunch, or sitting down for a cozy dinner, the area offers a diverse mix of local favorites and convenient go-to spots. With a blend of cafés, restaurants, and bakeries, there's always something new to discover. More than just a place to live, this community is a hub for connection—where neighbors gather, flavors thrive, and every outing feels like home.





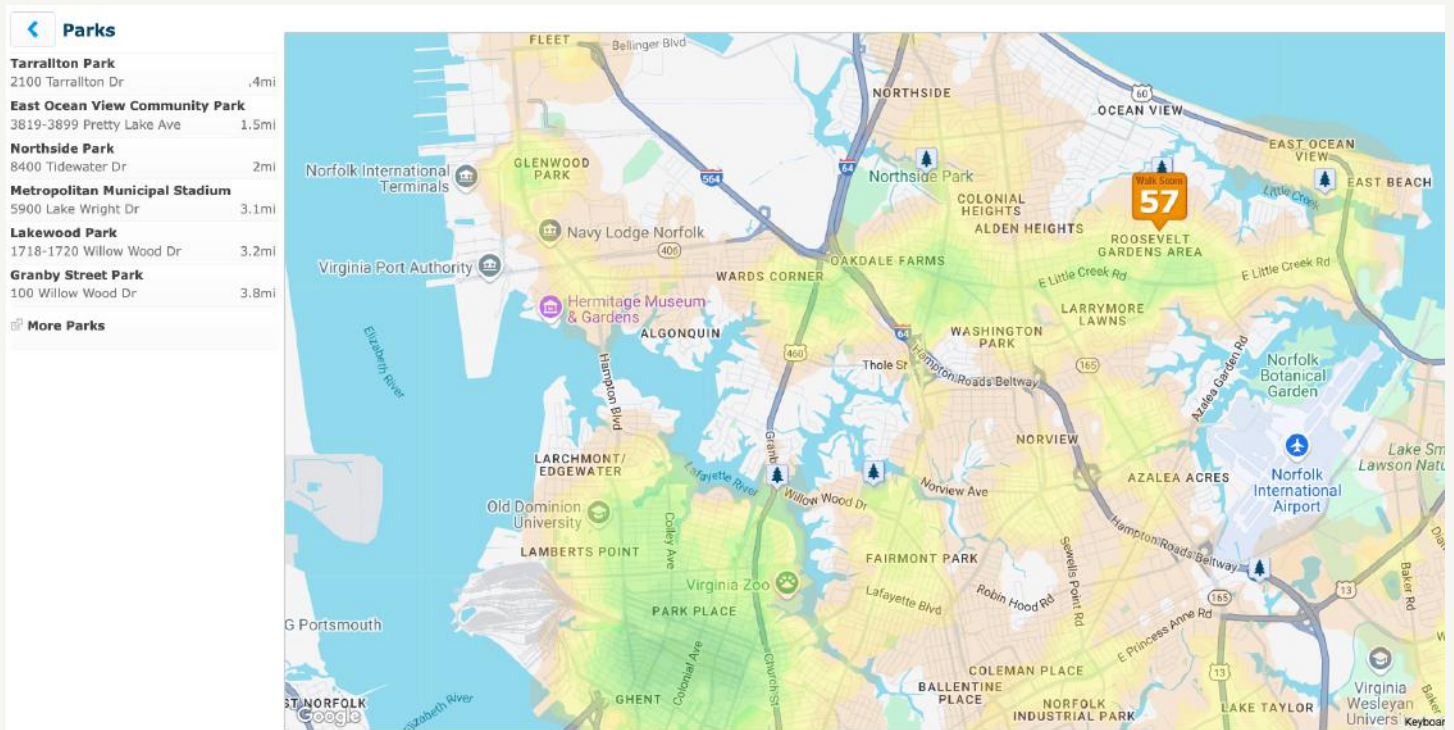
2209 Jeffrey Drive  
**Popular**

# Outdoor Report

	Dog Park GHENT DOG PARK	5.7 miles
	Park TARRALLTON PARK	0.6 miles
	Golf Course OCEAN VIEW GOLF COURSE	2.4 miles
	Lake LAKE SMITH RESERVOIR	3.7 miles

This home is located near a *variety* of outdoor activity options





### ***Embrace the Outdoors – Parks & Green Spaces Nearby***

Living at 2209 Jeffrey Drive means having access to beautiful parks and outdoor spaces just moments away. Whether you're looking for a scenic walking trail, a peaceful picnic spot, or a place to enjoy sports and recreation, the area offers plenty of options to explore. With well-maintained community parks and waterfront escapes nearby, you can easily step into nature for relaxation, fitness, or family fun.

From playgrounds and open fields to nature trails and serene green spaces, the neighborhood provides the perfect setting for an active and connected lifestyle. Whether you're enjoying an afternoon in the fresh air or finding your favorite spot to unwind, this is a community where outdoor living thrives.

A home isn't just about where you live—it's about the spaces that bring people together.





# School Report



Tarralton  
Elementary School  
Assigned

8  
Rating



Azalea Gardens  
Middle School  
Assigned

6  
Rating



Lake Taylor  
High School  
Assigned

4  
Rating

0.3  
miles

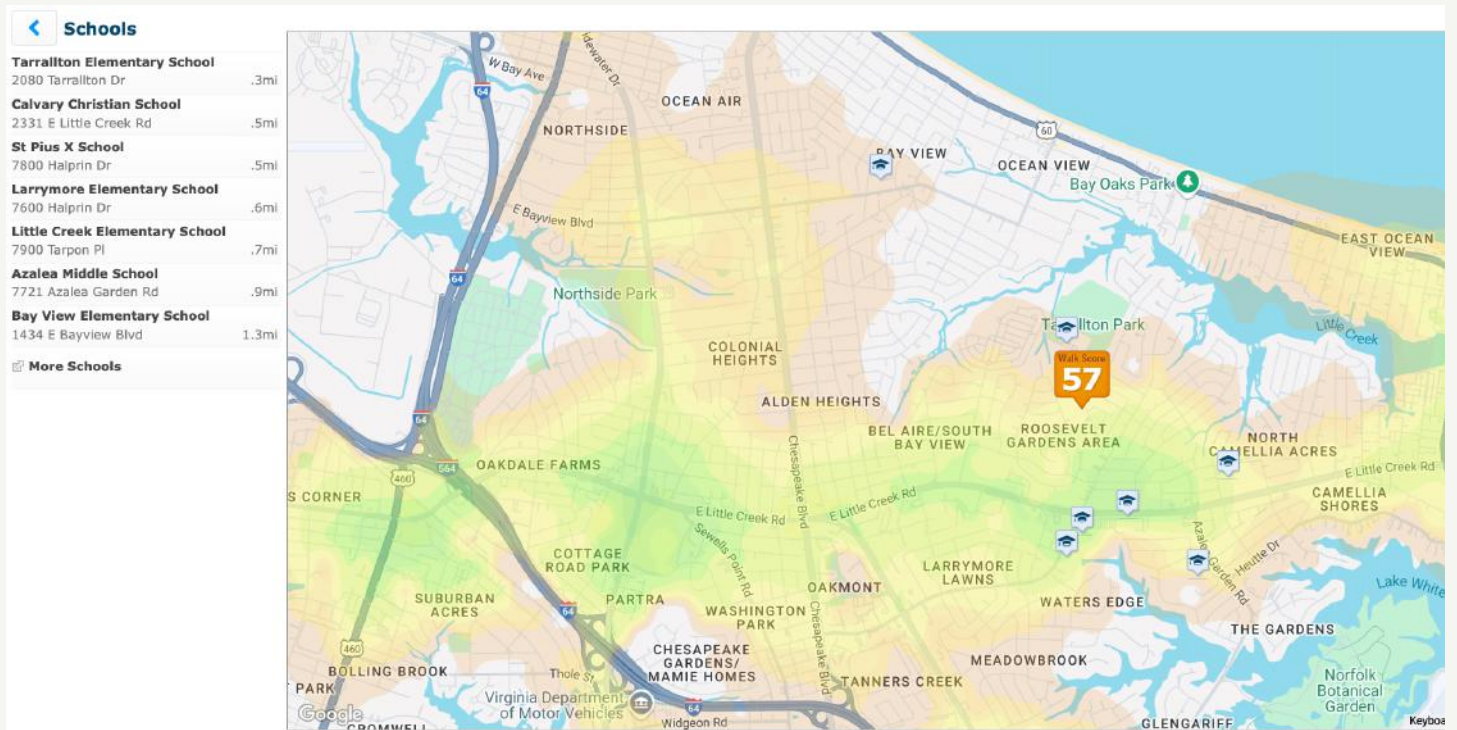
0.9  
miles

3.8  
miles

2209 Jeffrey Drive

The assigned schools are *average* for the area. There are also 16 private schools within 5 miles.





## Education & Community Connection

Living at 2209 Jeffrey Drive means being close to a variety of educational opportunities, with schools conveniently located just minutes away. Whether you're looking for elementary, middle, or private school options, the area offers a range of choices to meet different learning needs. Families will appreciate the ease of school drop-offs and the strong sense of community that local schools provide.

With multiple schools within a short distance, this neighborhood supports a well-rounded and accessible education experience. Whether it's walking to a nearby school or having quick access to specialized learning institutions, living here ensures that quality education is always within reach.

A home is more than just a place—it's about the connections and opportunities that surround it.





# Area Report

2209 Jeffrey Drive

## Very Convenient



**.03  
miles**

**0.4  
miles**

**.05  
miles**



**.06  
miles**

**0.5  
miles**



**0.6  
miles**



**0.9  
mile**

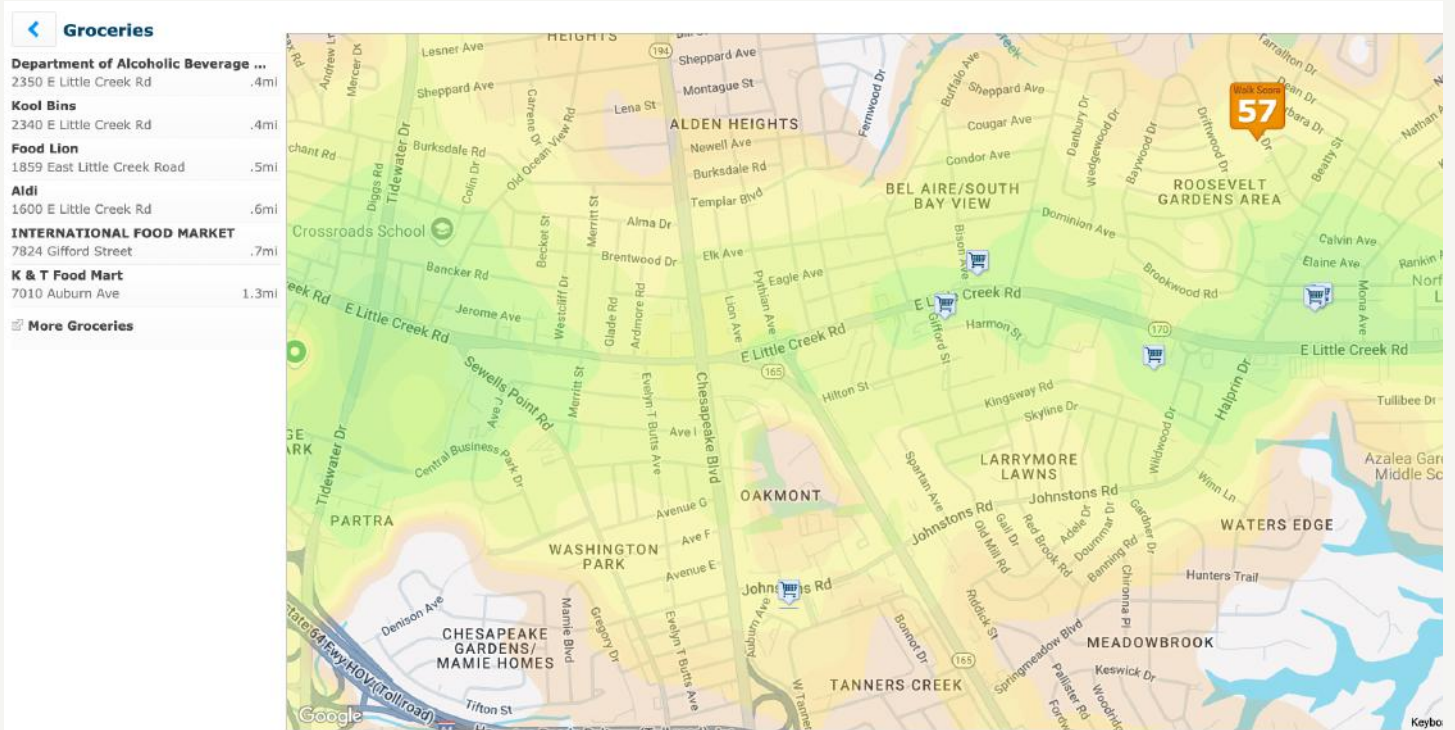
**1.1  
miles**

**5  
miles**



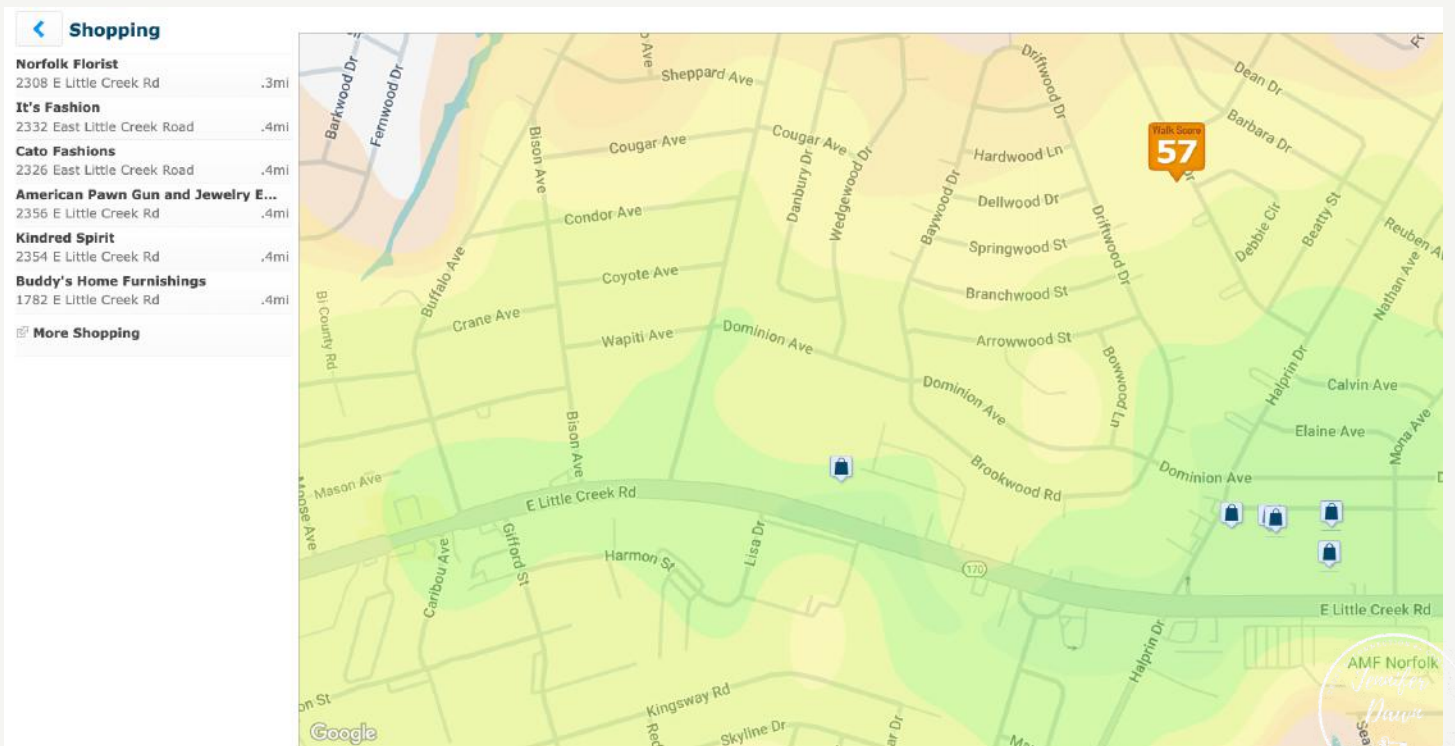
This home is in a **very convenient** area. Some daily errands in this location **require a car** and most major services are within **1 mile**.

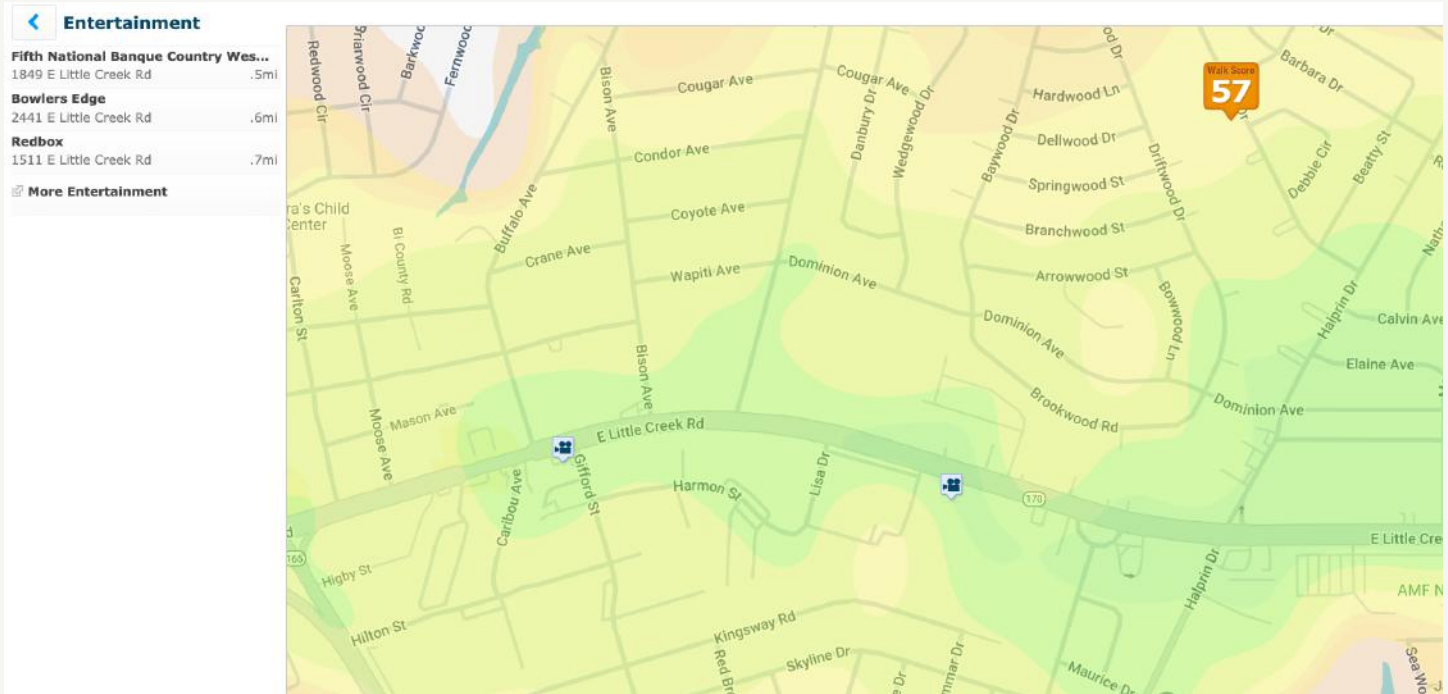




### Everyday Convenience, Just Minutes Away

Living at 2209 Jeffrey Drive means having easy access to a variety of shopping and grocery options just minutes away. Whether you're looking for fashion, home essentials, or unique local finds, nearby shopping centers offer everything you need for a quick and convenient retail experience. Grocery stores and markets are also within close reach, providing fresh produce, everyday essentials, and specialty items to stock your kitchen. With shopping and errands made effortless, you'll have more time to enjoy everything this vibrant community has to offer.

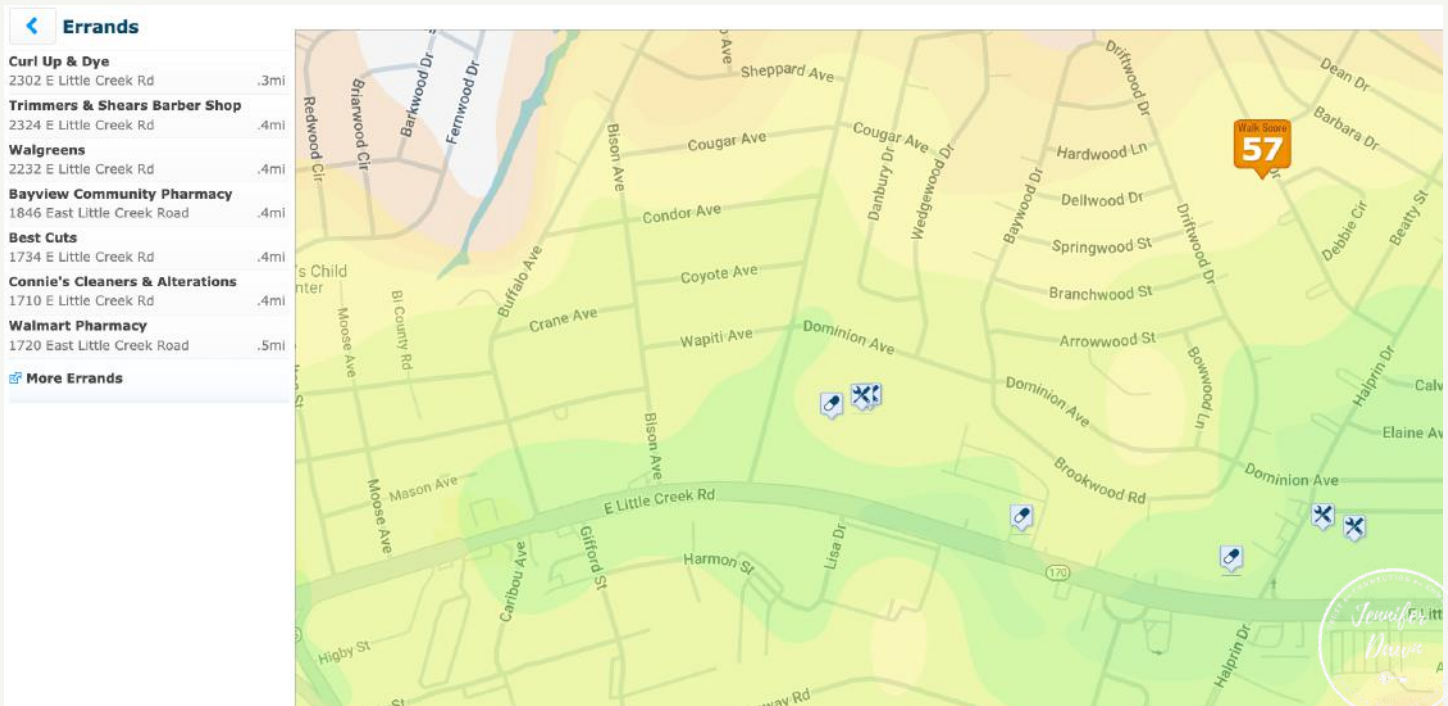




### Entertainment & Everyday Convenience Close to Home

Living at 2209 Jeffrey Drive means having essential services and entertainment options just moments away. Running errands is simple with nearby pharmacies, salons, and dry cleaners, making daily tasks effortless and convenient. Whether you need a quick stop for essentials or a place for self-care, everything is within easy reach.

When it's time to unwind, local entertainment spots offer plenty of options for fun and relaxation. From bowling alleys to casual entertainment venues, there are great ways to spend your free time close to home. With both practicality and recreation just minutes away, this neighborhood makes daily life both seamless and enjoyable.





# Walk Score®




## 2209 Jeffrey Drive

Roosevelt Area, Norfolk, 23518

Commute to **downtown norfolk** 

 22 min  48 min  60+ min [View Routes](#)

Commute to **downtown virginia beach** 

 33 min  60+ min  60+ min [View Routes](#)

### CAR DEPENDENT WALK SCORE 57

Some errands can be accomplished on foot.

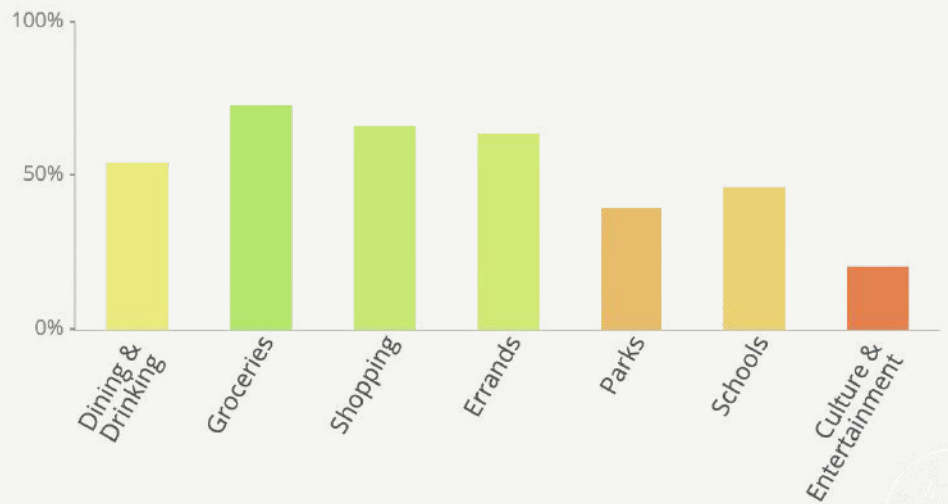
### SOMEWHAT BIKEABLE BIKE SCORE 48

Minimal bike infrastructure.

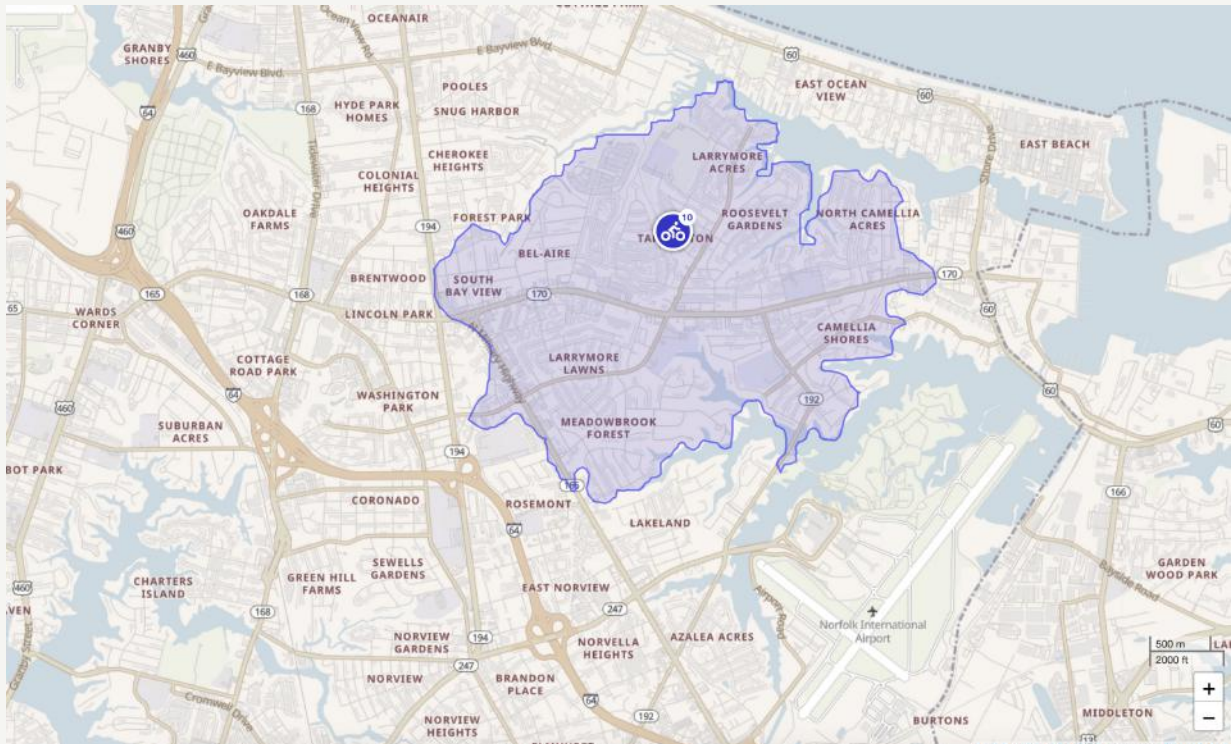
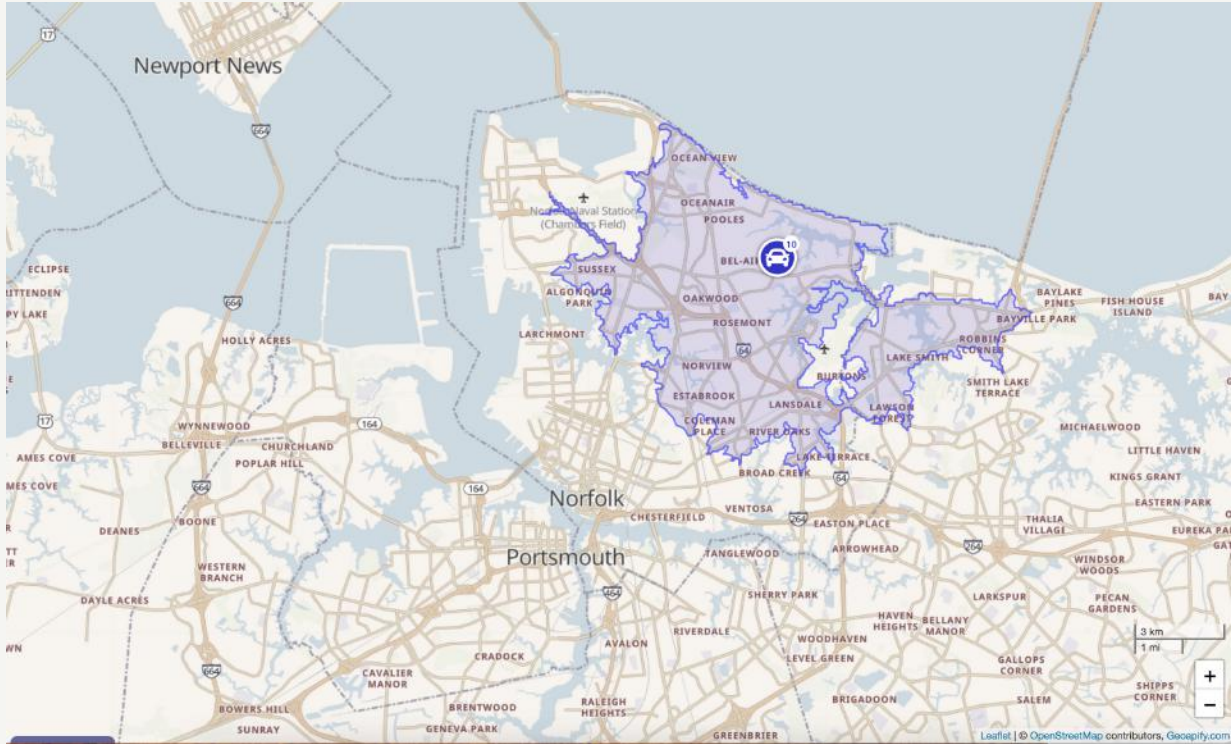
### MINIMAL TRANSIT TRANSIT SCORE 31

A few nearby public transportation options.

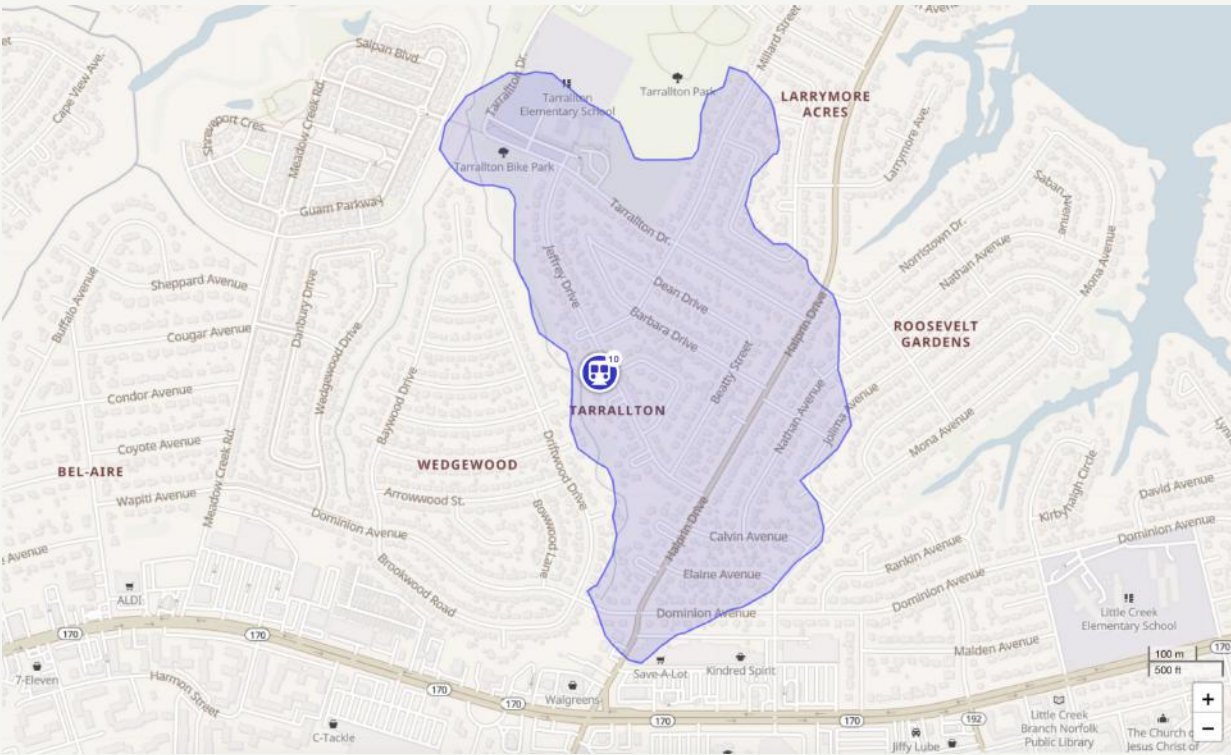
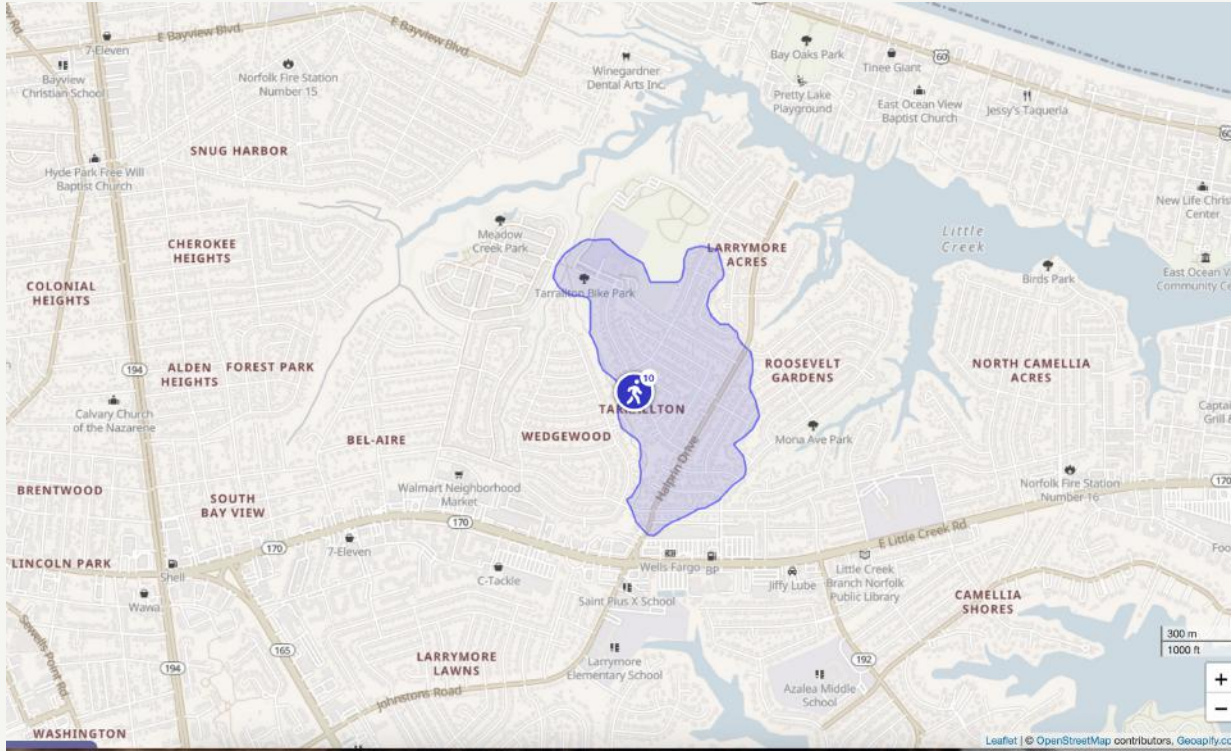
The Walk Score for 2209 Jeffrey Drive is based on the following categories.



# Commute Time



# Commute Time



**SCHOOLS** RADIUS: 1 MILE(S)

**PUBLIC - ELEMENTARY**

	Distance	Grades	Students	Students per Teacher	GreatSchools Rating (1)
Tarrallton Elementary	0.31	Pre-K-5th	316	15	7/10
Larrymore Elementary	0.63	Pre-K-5th	592	16	6/10
Little Creek Elementary	0.69	Pre-K-5th	631	14	2/10

Community Rating (2)

Tarrallton Elementary	1
Larrymore Elementary	3
Little Creek Elementary	

**PUBLIC - MIDDLE/HIGH**

	Distance	Grades	Students	Students per Teacher	GreatSchools Rating (1)
Azalea Gardens Middle	0.87	6th-8th	848	16	4/10

Community Rating (2)

Azalea Gardens Middle	1
-----------------------	---

**PRIVATE**

	Distance	Grades	Students	Classrooms	Community Rating (2)
St Pius X School	0.53	Pre-K-8th	191		

(1) School data is provided by GreatSchools, a nonprofit organization. Website: GreatSchools.org. Based on a scale of 1-10.  
 (2) The community rating is the overall rating that is submitted by either a Parent/Guardian, Teacher, Staff, Administrator, Student or Former Student. There will be only one rating per school. Based on a scale of 1-5.  
 (3) Powered by Liveby. Information is deemed reliable but not guaranteed. Copyright © 2021 Liveby. All rights reserved.

**LOCAL BUSINESSES** RADIUS: 1 MILE(S)

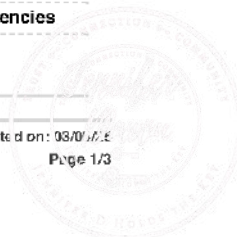
**ATTRACTIONS - RECREATION**

	Address	Phone #	Distance	Description
Virginia Boat Racing Association	8208 Halprin Dr	(757) 439-0803	0.25	Boat Racing
City Of Norfolk	2100 Tarrallton Dr	(757) 441-1765	0.29	Recreation Center
Maverick Murder Mystery	8420 Millard St	(757) 587-3883	0.42	Entertainment Service
Competitive Lightsaber Combat LLC	1730 E Little Creek Rd	(757) 447-7151	0.46	Martial Arts School, Nec
Amf Bowling Centers, Inc.	2441 E Little Creek Rd	(757) 583-1571	0.61	Ten Pin Center
Four Star Entertainment	1829 Garfield Dr	(757) 583-8322	0.73	Disc Jockey Service
Virginia L Cubilla	1840 Banning Rd	(757) 588-1291	0.82	Musician
Studio 360 Performing Arts, Inc.	1620 Red Brook Ct	(757) 677-6571	0.88	Performing Arts Center Production

**BANKS - FINANCIAL**

	Address	Phone #	Distance	Description
Wells Fargo Bank, National Association	2316 E Little Creek Rd	(757) 531-1400	0.42	National Commercial Banks
Checksmart	1501 E Little Creek Rd	(757) 583-8100	0.81	Check Cashing Agencies

**EATING - DRINKING**



	Address	Phone #	Distance	Description
Little Creek Diner, Inc.	7941 Halprin Dr	(757) 588-9948	0.33	Diner
Dunkin' Donuts	2300 E Little Creek Rd	(757) 587-4801	0.36	Doughnuts
Azalea Inn, Inc.	2344 E Little Creek Rd	(757) 587-4649	0.39	Pizza Restaurants
Hut East Coast LLC	2352 E Little Creek Rd	(757) 853-9999	0.4	Pizzeria, Chain
No 1 Chinese Restaurant	2368 E Little Creek Rd	(757) 588-6589	0.41	Chinese Restaurant
Manila Bread House	2372 E Little Creek Rd	(757) 588-2315	0.41	Retail Bakeries
Boddie-Noell Enterprises, Inc	2301 E Little Creek Rd	(757) 583-4277	0.46	Fast-Food Restaurant, Chain
Domino's Pizza LLC	1774 E Little Creek Rd	(757) 583-4400	0.46	Pizzeria, Chain
Drive In Sonic Americas	2404 E Little Creek Rd	(757) 587-1500	0.48	Drive-In Restaurant
Antonio's LLC	1710 E Little Creek Rd	(757) 588-8585	0.5	Pizzeria, Independent

#### HEALTH CARE SERVICES

	Address	Phone #	Distance	Description
Storm's Natural Wellness, Inc ., Johnny	2204 Barbara Dr	(757) 583-6762	0.11	Health And Allied Services, Nec
Dr Mathew Kent Pc	7923 Halprin Dr	(757) 587-0874	0.36	Dentists' Office
Partners In Dental Health Pc	7923 Halprin Dr	(757) 587-0874	0.36	Dentists' Office
Marjorie M Voelker Dds	2338 E Little Creek Rd	(757) 588-5665	0.38	Offices And Clinics Of Dentists
Kevin F Honore	2370 E Little Creek Rd	(757) 588-8162	0.41	Offices And Clinics Of Medical Doctors
Alison C Ringo	1753 Saipan Blvd	(254) 266-3108	0.44	Offices And Clinics Of Medical Doctors
Soft Palate Dentistry	1734 E Little Creek Rd	(757) 651-2082	0.45	Dentists' Office
Alan Kunkel	2203 E Little Creek Rd	(757) 583-2181	0.47	General And Family Practice, Physician/Surgeon
Roosevelt Family Practice	2203 E Little Creek Rd	(757) 583-2181	0.47	General And Family Practice, Physician/Surgeon
Total Renal Care, Inc.	1817 E Little Creek Rd	(757) 480-3780	0.49	Kidney Dialysis Centers

#### ORGANIZATIONS - ASSOCIATIONS

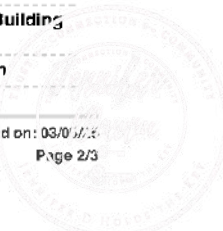
	Address	Phone #	Distance	Description
Blessed Assurance Ministries Church LLC	8133 Debbie Cir	(804) 586-2782	0.09	Churches, Temples, And Shrines
Heritage Christian Church	8233 Jolima Ave	(757) 389-1243	0.38	Miscellaneous Denomination Church
Taoist Tai Chi Society Of The United States Of America, Inc	Virginia Ln Ave D	(757) 857-5100	0.45	Miscellaneous Denomination Church
St Pius X Church School	7800 Halprin Dr	(757) 588-6171	0.53	Catholic Church
Danny B Erwin Rev	2530 Jasper Ct	(757) 857-0091	0.77	Religious Organizations
The Garden United Methodist Church	2709 Greendale Ave	(757) 587-4332	0.8	Methodist Church
Rise And Shine Ministry Cognition, Incorporated	8056 Lynnbrook Dr	(757) 633-8669	0.81	Religious Organizations
Christ Apostolic Church	7919 Buffalo Ave	(757) 390-4126	0.81	Miscellaneous Denomination Church
Calvin Presbyterian Church Of Norfolk, Inc.	2901 E Little Creek Rd	(757) 587-1591	0.9	Presbyterian Church

#### PERSONAL SERVICES

	Address	Phone #	Distance	Description
Saberation Inc.	1730 E Little Creek Rd	(757) 689-7963	0.46	Physical Fitness Facilities
Total Saber Fit LLC	1730 E Little Creek Rd	(757) 366-1378	0.46	Physical Fitness Clubs With Training Equipment
Crossfit Little Creek	1809 E Bayview Blvd	(617) 774-7695	0.93	Physical Fitness Facilities

#### SHOPPING

	Address	Phone #	Distance	Description
7-Eleven, Inc.	7931 Halprin Dr	(757) 587-7470	0.35	Convenience Stores, Chain
Save-A-Lot Food Stores, Ltd.	2314 E Little Creek Rd	(757) 583-3476	0.37	Grocery Stores, Independent
Fuel, Feed Plaza Home Center, Incorporated	2400 E Little Creek Rd	(757) 531-8600	0.43	Lumber And Other Building Materials
Food Lion, LLC	1859 E Little Creek Rd	(757) 588-0423	0.53	Supermarkets, Chain



Marshalls Of Ma, Inc.	1855 E Little Creek Rd	(757) 587-5035	0.53	Department Stores, Discount
Citi Trends, Inc.	1853 E Little Creek Rd	(757) 480-4441	0.53	Department Stores
Big Lots Stores, Inc.	1851 E Little Creek Rd	(757) 583-6878	0.53	Variety Stores
7-Eleven	2475 E Little Creek Rd	(757) 588-7125	0.64	Convenience Stores, Chain
Grocery Cutters	2308 Wharton Ave	(757) 587-7075	0.65	Grocery Stores
Wheel Food LLC	1867 E Bayview Blvd	(757) 575-8889	0.83	Grocery Stores


**Discover the Best of Norfolk Living at 2209 Jeffrey Dr!**

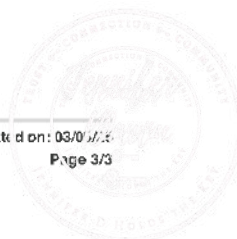
Situated in a prime location, 2209 Jeffrey Dr offers unmatched convenience with easy access to schools, recreation, dining, shopping, and essential services—all within a one-mile radius.

**Recreation & Entertainment** – Enjoy nearby parks, recreation centers, and entertainment venues, offering activities for every interest. From local performing arts to bowling alleys and outdoor spaces, there's always something to explore.

**Shopping & Dining** – Whether you're looking for everyday essentials or a night out, a variety of shopping centers, grocery stores, cafés, and restaurants are just minutes away, making errands and dining effortless.

**Healthcare & Essential Services** – Stay connected to top-tier healthcare providers, pharmacies, banks, and personal services, ensuring a seamless and convenient lifestyle.

 Live Connected, Live Conveniently!



Located in a well-connected and vibrant community, 2209 Jeffrey Drive offers unmatched convenience with easy access to schools, parks, shopping, dining, entertainment, and essential services all within a short distance. The neighborhood features recreational amenities like parks, a community center, and entertainment venues, perfect for outdoor activities and social gatherings. A variety of restaurants, cafés, and grocery stores ensure that everything from quick bites to daily essentials is just minutes away. With nearby banks, pharmacies, healthcare providers, and personal services, daily errands are effortless. Plus, the area's accessibility to schools and major roadways makes commuting and family life seamless. Whether you're looking for relaxation, recreation, or convenience, this Norfolk gem offers the perfect balance of comfort, connection, and community.

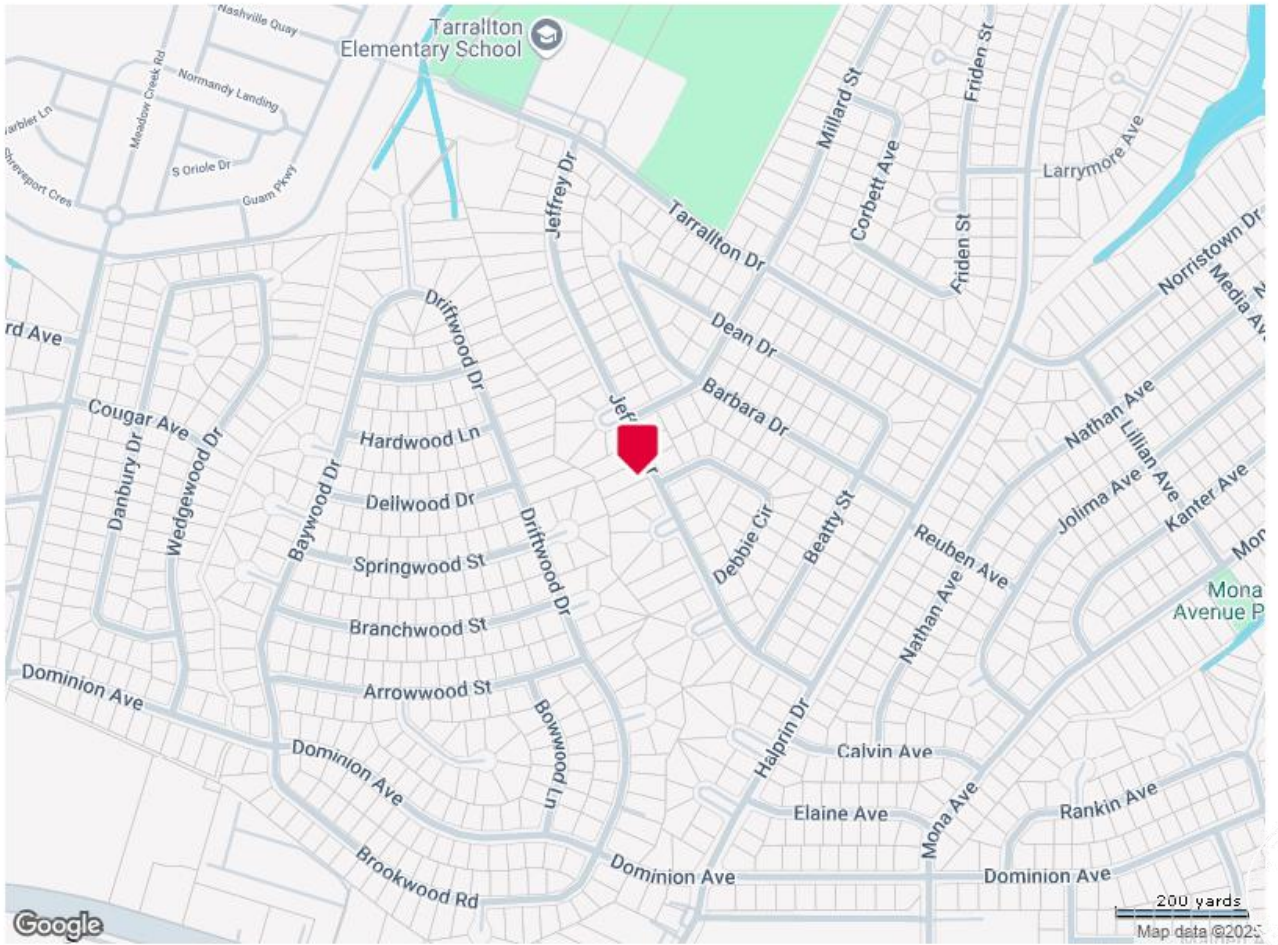
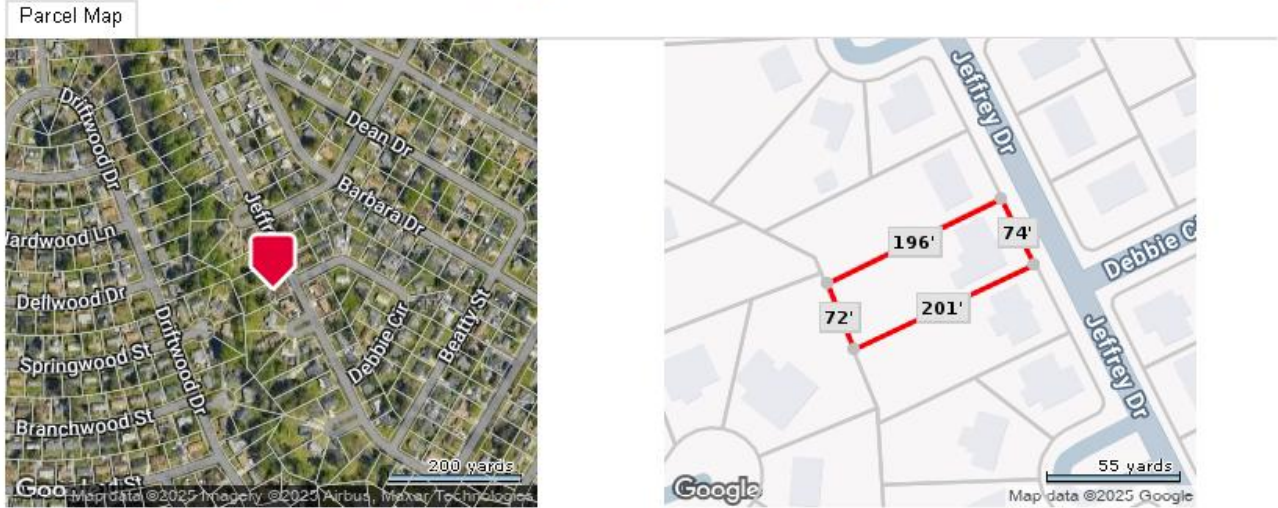


**A HOME THAT INVITES YOU TO STAY**



This well-positioned home offers a prime location in the welcoming Tarrallton neighborhood, surrounded by tree-lined streets and a strong sense of community. Just minutes from local parks, schools, and everyday conveniences, this property provides the perfect blend of comfort and accessibility. With easy access to shopping, dining, and major roadways, 2209 Jeffrey Drive is an excellent choice for those looking to enjoy a relaxed yet connected lifestyle in Norfolk.

### 2209 Jeffrey Drive, Norfolk, Virginia 23518







**2209 Jeffrey Drive  
Norfolk**

**A Home That Invites  
You to Stay**

Don't miss your opportunity to  
love where you live

LEARN MORE:  
[JenniferDawnRealEstate.com](http://JenniferDawnRealEstate.com)



TRUST 🔑 CONNECTION 🔑 COMMUNITY



EXPECT EXCEPTIONAL

757-524-0417  
Jenifer.Dawn@rwtowne.com  
600 22nd Street, Suite 101  
Virginia Beach, VA 23451



Let's Get You Home

[www.JenniferDawnRealEstate.com](http://www.JenniferDawnRealEstate.com)

LUXURY ~ RESIDENTIAL ~ RELOCATION ~ INVESTMENT

REALTOR®

BERKSHIRE HATHAWAY | RW TOWNE REALTY  
HOMESERVICES

If your property is currently listed with another real estate broker, please disregard this offer. ©2025 BHH Affiliates, LLC. An independently owned and operated franchisee of BHH Affiliates, LLC. Berkshire Hathaway HomeServices and the Berkshire Hathaway HomeServices symbol are registered service marks of Columbia Insurance Company, a Berkshire Hathaway affiliate. Equal Housing Opportunity. Berkshire Hathaway HomeServices RW Towne Realty is an affiliate of TowneBank. VA License # 0226036532

