

GET SMART

THE C^oNNECTED SHOP



SMART DOOR LOCK
USER MANUAL

Welcome to the Smart Door Lock User Manual. Your easy, step-by-step guide to install, set up, and connect your ADA Smart Door Lock. The device is designed to be easy-to-use and to replace all modern door knobs—be it on the main door, bedroom door knobs, and so on— for the new, modern geek smart ADA Smart Door Lock.



SUMMARY

I. Device Installation



1. Installation Guide

II. Initialization



2. Initial State of your Smart Lock

- a) Add Administrators and Users
- b) Delete Users
- c) Enable and Disable Passage Mode

PACKAGING DETAILS

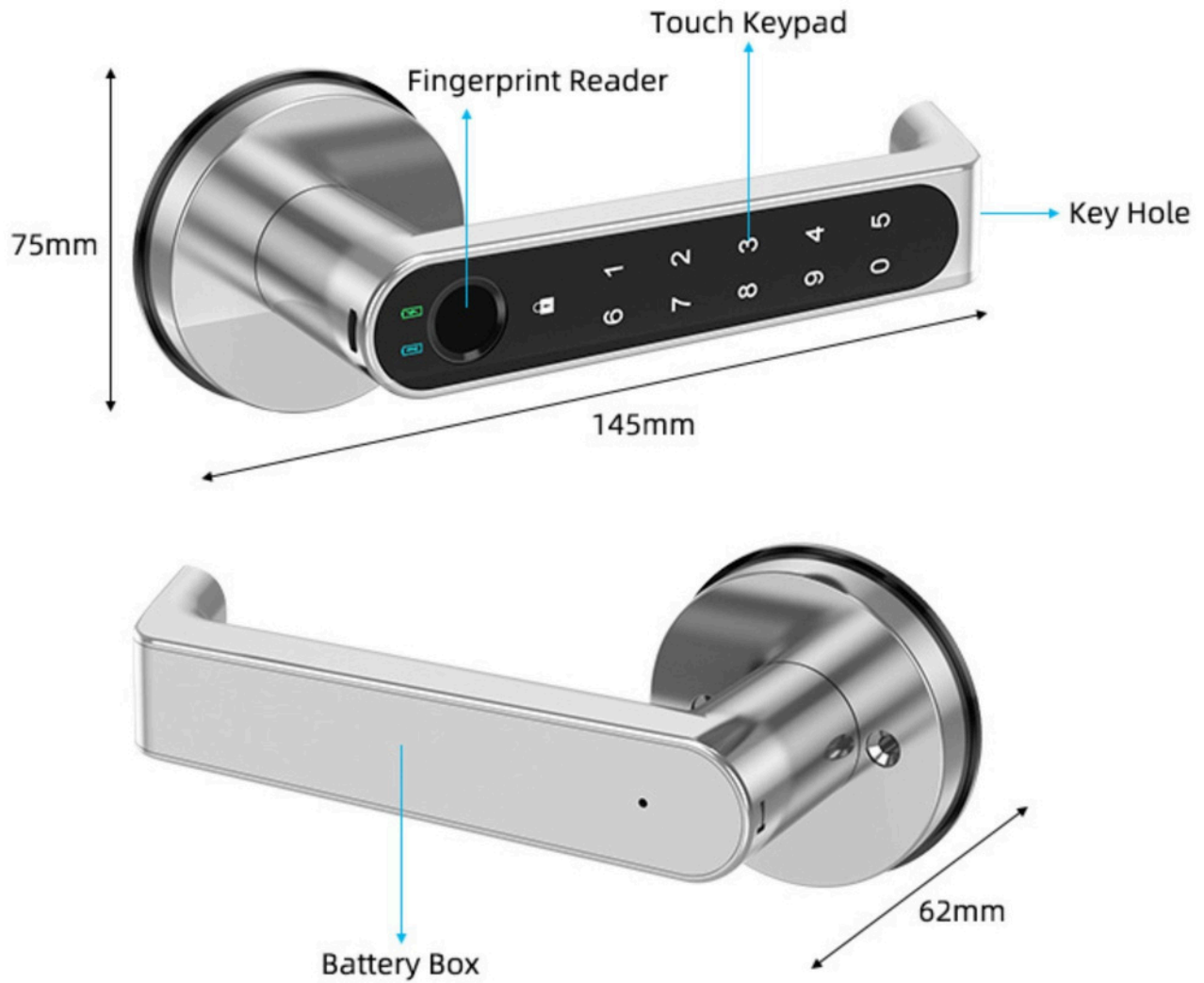
2

1

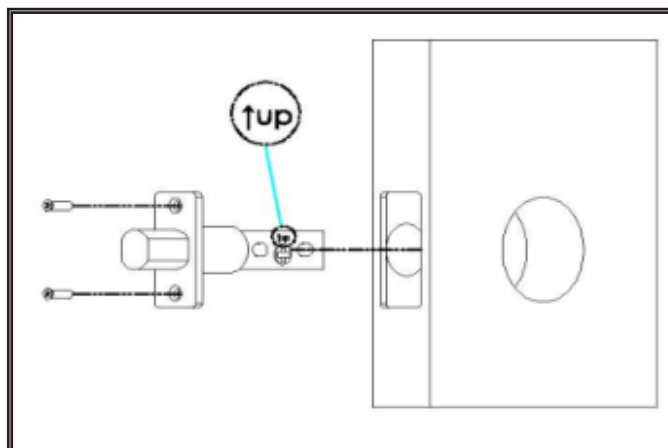
1 Smart Lock with Latch

2 Physical Key with Lock Screws

STEP BY STEP SMART LOCK INSTALLATION GUIDE



1. INSTALLATION



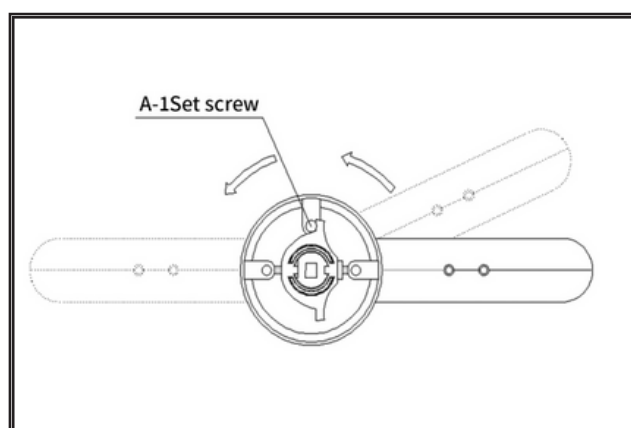
a. Start by removing your current lock. This is generally done by unscrewing the bolts and pulling out your current door knob.

b. Insert your new Latch and Strike Plate into the door frame. Tighten the Latch Screws on the top and bottom sides. Making sure the latch bolt is on the top side of the lock.

c. Affix the Front Door Handle on to the door. Insert the Lock Body Screws into the holes behind the handles. Install the handle by passing the screws through the door.

d. Insert the metal rod from the Front Handle through the door to connect it to the Back Door Handle.

NOTE (if only applicable): Before installing the smart door locks, please ensure to ADJUST THE CLUTCH/SCREW DIRECTION accordingly. The clutch is found at the back of the front/outside lock panel where the keypad is located.



2. INITIAL STATE OF YOUR SMART LOCK



Legend:



= to enter or confirm a passcode that has been inputted

123456 = the default administrator information. (OPTIONAL)

Note:

Under the initial state, any fingerprint, keycard, and password can unlock or open the smart lock.

2. INITIAL STATE OF YOUR SMART LOCK



a) Add Administrators and Users

- Only an authorized fingerprint and passcode can unlock the device.
- The first three (3) registered fingerprints and passcodes will be considered as the administrators.
- Always remember to activate your Smart Lock first before entering your Administrator Information
- To add a fingerprint, touch the keypad to activate it, and press "1"+"🔒". Blue light would flash. Press the fingerprint sensor with any finger, and the lock will beep and the blue light will stop at the same time. Press the fingerprint sensor with the unlocking finger six times. Every time you press the sensor would be accompanied by a beep and a twinkle of green light. (Please change the position of the finger whenever pressing the sensor). Add a fingerprint successfully after a long beep and the green light going off.
- To add a passcode, touch the keypad to activate it, and press "1"+"🔒". A Blue light will flash. Press the fingerprint sensor with any finger, and the lock will beep and the blue light will stop at the same time. Enter your code (6 digits) and confirm it by "🔒". A green light will go on accompanied by a long beep. Enter the code again and confirm it by "🔒". If the code you entered is the same, the lock would make a long beep, and the green light would go off. Operation successful. Otherwise, the lock would beep thrice, and a red light would go on. Please try again.
- To add other users, touch the keypad to activate it, and press "1"+"🔒". A blue light would flash. Unlock with one of the entered admin codes or fingerprints. The lock would make a long beep and the blue light would go off. Repeat steps.

2. INITIAL STATE OF YOUR SMART LOCK



b) Delete Users

- To delete users, touch the keypad to activate the lock, enter "888" and confirm it by "🔒". A red light would flash. Please unlock with one of the entered admin codes or fingerprints, then the red light will turn green accompanied by a long beep. Deleting all users successfully.
- To reset the lock, press the reset button on the battery box for 9 seconds. Green light would flash accompanied by beeps. Remove your finger after 9 seconds when you see a red light flash. Finally, the light would turn green and go off. Operation successful.

2. INITIAL STATE OF YOUR SMART LOCK



c) Enable and Disable Passage Mode

- To enable passage mode, touch the keypad to activate the lock, enter "555" and confirm it by pressing "🔒". A purple light would flash. Please unlock with one of the entered admin codes or fingerprints, then the light will turn green accompanied by a long beep. Passage mode enabled. Please repeat the steps to change to automatic locking mode/disable passage mode.
- To manually lock the lock while in passage mode, touch the keypad to activate the lock, and press "🔒" to lock. Use any entered code or fingerprint to unlock.

Congratulations!

You have successfully installed your very own ADA Smart Door Lock.
Thank you for being a valued customer of The Connected Shop.

www.theconnectedshop.com





THE CONNECTED SHOP