

# SILVERGUARD

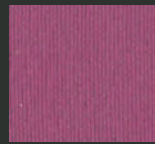
# INDOOR - OUTDOOR



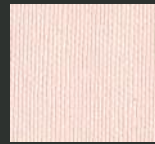
SG95020  
BASIL



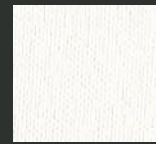
SG95009  
SAGE



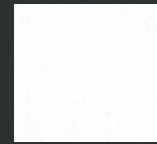
SG92097  
ORCHID



SG92099  
LOTUS



SG94004  
ICE



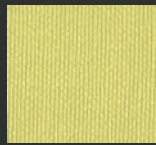
SG92089  
WHITE



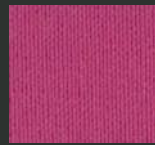
SG95008  
PISTACHO



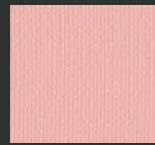
SG95019  
CELERY



SG92092  
AVOCADO



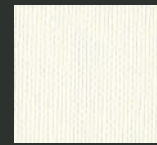
SG97002  
MAGENTA



SG92098  
ROSE



SG92090  
ICECREAM



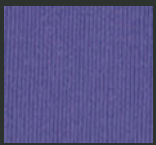
SG91077  
CREAM



SG95063  
FOREST



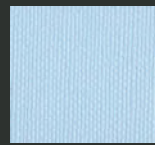
SG95010  
BOTTLE



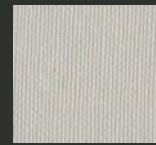
SG92104  
ULTRAVIOLET



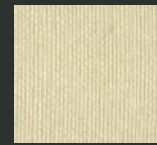
SG97001  
AUBERGINE



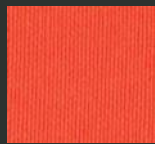
SG92103  
SKYLIGHT



SG90001  
MACADAMIA



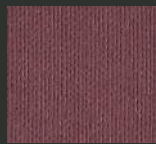
SG91051  
SISAL



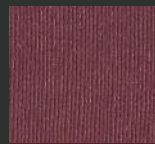
SG92096  
TOMATO



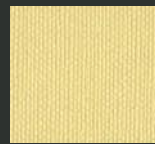
SG92095  
GRENADINE



SG96004  
RUBIN



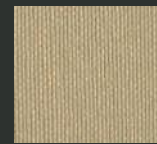
SG92016  
RASPBERRY



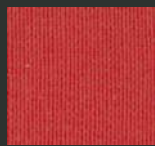
SG92091  
CITRUS



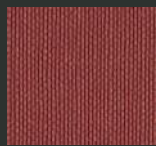
SG90002  
SANDSTONE



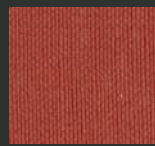
SG91078  
CHAMPAGNE



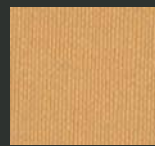
SG92011  
RED



SG92064  
WINE



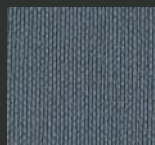
SG92012  
SUNKIST



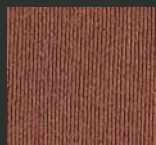
SG92105  
CAMEL



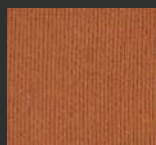
SG91010  
BEIGE



SG94002  
STORM



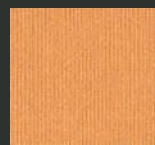
SG91014  
UMBER



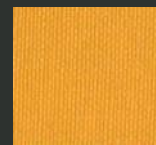
SG96061  
MANDARIN



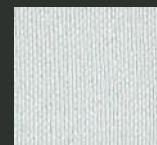
SG90013  
ORANGE



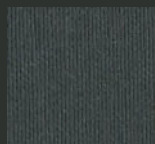
SG96062  
MELON



SG96065  
SAFRAN



SG92101  
ALUMINIUM



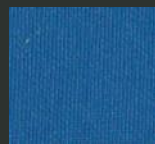
SG99002  
CARBON



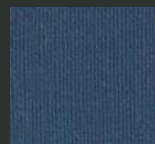
SG92003  
COBRE



SG90009  
TAUPE



SG93067  
DELFT



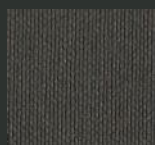
SG93007  
SAPPHIRE



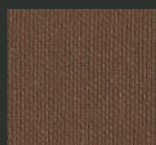
SG92093  
SQUASH



SG94001  
PLATA



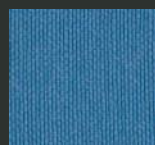
SG90005  
MOCCA



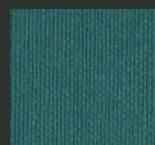
SG90073  
LUGGAGE



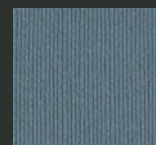
SG94012  
SHIITAKE



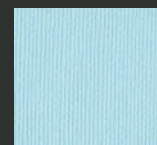
SG93066  
BALTIC



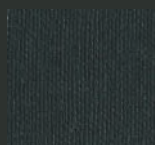
SG92100  
TEAL



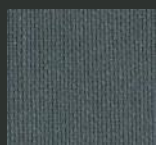
SG92094  
PETROL



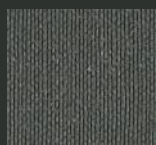
SG92102  
CORAL



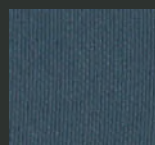
SG99001  
BLACK



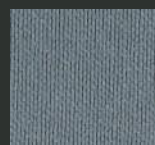
SG94003  
GRAPHITE



SG94024  
METEOR



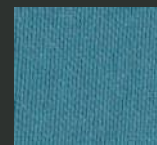
SG93068  
JET



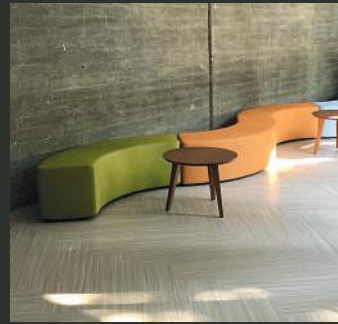
SG94010  
TITANIUM



SG94011  
STERLING



SG93001  
TURQUOISE



**CHARACTERISTICS** **INDOOR - OUTDOOR**

Composition:	Topcoat: Vinyl / Urethane
Backing:	100% Polyester Hi-Loft <sup>2</sup> ™
Weight:	685 gr/m <sup>2</sup>
Roll Width:	min. 137 cm
Roll Length:	+/- 30 m
Abrasion:	>300.000 cycles (MARTINDALE)
Cold Crack:	-23 °C
UV-Resistance:	ISO 105 B02: ≥ 7/8 (Blue Wool Scale) ISO 104 B04: ≥ 4/5 (Grey Scale)
Flame retardancy*:	EU EN 1021 Part 1 & 2 EU ECE R 118.03 (R118.02 Anx. 6,7 & 8) EU (MED) Marine Equipment Directive EU IMO FTP 2010 Code MSC.307 (88) Part 8 3.1 & 3.2 EU EN 71-2:2006+A1:2007 Safety of Toys - part 2 DE DIN 4102 B2 IT UNI 9175 Classe 1.1M ES UNE 23.727-90 1R/M.2 FR NF P 92-503 (M2) AT ÖNORM B 3825, Gruppe 1 AT ÖNORM A 3800 Teil 1 US FMVSS 302 US CAL TB 117-2013, Sec. E US FAR 25/853

\*This term and any corresponding data refer to the typical performance in the specific tests indicated and should not be construed to imply the behaviour of this or any other material under actual fire conditions.

**FINISHES AND TREATMENTS** **PERMABLOK<sup>3</sup>**  
ADVANCED VINYL PROTECTION

Antibacterial Protection, Antimycotic Protection, Antifungal Protection, Anti-stain Finish, Mildew resistant backing and face, Sulfide Stain Resistant, Anti-static Finish, EN 71-3 Safety of Toys (Migration of certain elements)

Virucidal Activity: ISO 18184:2019:<sup>1</sup>  
Coated Fabrics treated with PERMABLOK<sup>3</sup> are proven to reduce the presence of Coronavirus\*\* by more than 90% within one hour of contact.

ISO 21702:2019:<sup>2</sup>  
All the Coated fabrics treated with PERMABLOK<sup>3</sup> are capable of reducing the Coronavirus\*\* activity by 99,9% within 24 hours of exposure on the surface.

Bacteriostatic Properties: ISO 22196:2011. Value of antibacterial\*\*\* activity R>2

**SUSTAINABILITY** **eco<sup>sense</sup>**  
ISO 14001 Environmental Management  
Carbon Neutral  
REACH | RoHS

**SAMPLES AND ENQUIRES**

samples: [samples@vyvafabrics.nl](mailto:samples@vyvafabrics.nl) | orders: [info@vyvafabrics.nl](mailto:info@vyvafabrics.nl)

**CARE AND CLEANING**      

For optimum care and cleaning please read the following instructions and recommendations.

**Disinfectant Use**

The following information refers to the performance of PERMABLOK<sup>3</sup> products in specific tests, conducted under laboratory conditions. Results may vary under actual conditions:

- Asepticare TB + II • Antifect (in 0.5 % dilution) • Caviwipes XL Packed
- Cleanisept Wipes • Clorox Healthcare Bleach • Germicidal Wipes
- Coverage Plus Germicidal Wipes • Desomed rapid • FD 366
- Hydrogen Peroxide Cleaner Disinfectant Wipes • Instrunet Anionsurf
- Lysol Foaming Disinfectant Cleaner • Microzid • Oxivir TB Wipes
- Oxycide Diluted -3oz/gl in water • PDI Sani-cloth bleach wipes
- Sanicloth AF 3 • Sodium Hypochlorite. Disinfectant. Bletach cleaner. Dilution: 1:10 mix of bleach and water. • Surfanios Premium (in 0,25% dilution) • Surfa'Safe Premium (in 0,25% dilution) • Super Sani-cloth
- Virex II 256 (1:256 Dilution) • Virox 5 Rtu • Wet wipe • Wex Cide 128 (1:128 dilution)

Rinse the area with clean water, then dry with a clean, lint-free cloth after using any disinfectants and cleaners.

**Cleaning after Disinfection:**

The coated fabric should be cleaned periodically in order to maintain its appearance and prevent build-up of dirt and contaminants. Any stain, spills, or soiling should be cleaned up immediately to prevent the possibility of permanent staining. Use a mixture of 1:1 liquid soap (neutral pH) and water or our approved cleaning products for coated fabrics to remove stains on the surface of the material. Completely remove excess cleaner with a white, clean, damp cloth; and dry the surfaces afterwards. Lacquers, strong cleaners, detergents, xylene-based solutions, acetone, or ketone (MEK) cause immediate damage and contribute to the deterioration of the material. The use of such cleaners is at the owner's risk.

**Cleaning methods to remove tougher stains**

**Step 1:** Coffee, juice, red wine, sauces, chocolate, grease, crayon and suntan lotion. Remove excess spill with a damp cloth. Clean with a 1:1 mix of neutral liquid soap and water. Next, rinse with clean water and dry.

**Step 2:** Make-up Use a straight application of neutral PH soap. Wipe with a clean white cloth or soft brush, rinse with clean water, and dry.

**Step 3:** Blood, urine, faeces and all other tough stains Use a 1:10 mix of Isopropyl alcohol and water. Rinse thoroughly with clean water and dry.

For cleaning: use a soft white cotton cloth saturated with the recommended cleaning agent and rub the stain in random circles, ten times or more. Pat dry with another soft white cotton cloth and check the results. Do not use steel bristle brushes, abrasive scouring pads or metal, these cause permanent damage to the fabric. Methods 2 & 3 are not recommended for everyday cleaning! After cleaning, rinse the area with clean water, then dry with a clean, lint-free cloth. Failure to remove chemical residue will cause discolouration of the coated fabric surface to manifest itself earlier in the life cycle of the product.

