

UV CURING LAMP



Finixa UV curing lamp is a rechargeable UV curing light developed with the latest ultra-hi-flux UV-A LED technology. With custom-designed optics provides more efficient and faster curing for all automotive repair and industrial refinishing work that uses ultraviolet light curable putties, fillers, primers and clear coats.

Key features

- Super-fast curing times
- Powerful irradiance with maximum UV-A intensity of 55 $\mu\text{W}/\text{cm}^2$ at 20cm
- Successfully tested on UV paint products from all major paint manufacturers
- Only emits UV-A (395nm) and does not emit UV-B or UV-C
- Active built-in cooling system keeps the lamp cooler in order to maintain optimum light output during extended use
- Ultrasonic distance control
- LCD control display
- Wall-mounted charging station provides a convenient recharging process and better organized workplace



\$1450

UVL 00

One Step UV Primer/Filler



Our One-Step UV Primer/Filler – a revolutionary one-component primer/filler that eliminates the need for mixing with other products. Achieve rapid drying in just 1-2 minutes (depending on the layer thickness) by using our UV lamp (UVL 00). This one-step system enhances productivity, saving time and energy.

\$100

TSP 1500

UV Lamp Tripod



Handy tripod available for longer exposures

\$155

UVL 01



Australian Made, Premium Body Fillers. The RestoFill range can be applied the 'traditional' way, however designed specifically with the restoration process in mind. When paired with Melomotive Splines or larger applicators, they are in a league of their own



The perfect sanding tools for every job - see your rep for more details



RESTORE • REBUILD • REFINISH

**Bodywork Workshop
New Zealand 2025**

HAMILTON 24th May PALMERSTON NORTH 11th/12th July

Transform Your Car Restoration Game...
learn Elite Design Studio Methods Now!
Make bodywork faster and easier, with less sanding.
Paint Smart Group is bringing Melomotive Australia classes to New Zealand!

More details on back page

Plastic Repair Kit - everything you need in one kit

Finixa offers a wide range of adhesives and sealants especially developed for the professional body shop; versatility, problem-solving, time-saving, ease of use and environmental friendliness are the parameters in the development of our products.

Check out Finixa's plastic repair technology. The ultra-fast and cost-effective curing times combined with ease of use and extreme adhesion make this the absolute first choice of every professional.

Your Body Shop is reliant on labour sales, using Finixa Plastic Repair enables you to repair more plastic parts, hence more labour, more profit.



- 3 x Plastic repair 'fast' (25 sec) black - 50ml
- 3 x Plastic repair 'medium' (1.5 min) black - 50ml
- 1 x Mixer tips - 10pcs
- 1 x Applicator gun
- 1 x Reinforcement canvas - 12cm x 3.6cm
- 1 x Contour canvas - 12cm x 3.6cm
- 1 x Foam-It
- 1 x Adhesion Primer

\$425

PL100



Quick Change Sanding Disc's



in confined spaces and seamlessly pairs with the QCS 00 Quick Change Spindle, offering a hassle-free solution for your sanding needs.

P36, 50 & 80

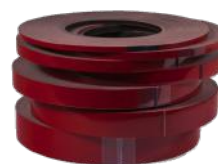
\$44.98

QCD5036-50-80

\$16.85

QCS00

Double Sided Tape



This acrylic adhesive base tape is perfect for attaching protective side moldings on vehicles.

It provides a strong initial contact and offers superior adhesion at any temperature.

DZB04 \$ 9³⁰

DZB06 \$ 11⁰⁰

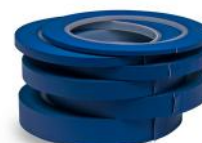
DZB12 \$ 19⁴⁰

DZB15 \$ 26⁰⁰

DZB19 \$ 31⁶⁰

DZB25 \$ 47⁶⁰

Fine Line Tape



Designed for specific masking tasks like multi-color spraying, artwork, or custom painting, this PVC tape offers greater flexibility than standard masking tapes. Its exceptional adhesive

quality allows masking on plastic and rubber surfaces.

FOL303 \$ 8⁸⁰

FOL306 \$ 10⁵⁰

FOL309 \$ 15⁹⁵

FOL312 \$ 20³⁰

FOL315 \$ 24⁶⁰

FOL319 \$ 29⁵⁰

FOL325 \$ 38⁵⁰

Water-base Silicone and Surface Degreaser



DGR is a Eco-friendly, biodegradable water-based cleaner. Can be used to remove dirt, dust, swarf and to degrease all kinds of surfaces such as old paint layers, primers, metal (steel, aluminium and galvanized pieces) and plastic.

It does not affect rubber or plastic and is also anti-static leaving the surface with no residue. Additionally, it serves as an excellent substitute not just for other water-based degreasers, but also for solvent-based silicone removers.



\$59.95

DGR05 - 5 Litre

\$247.70

DGR25 - 25 Litre

Dust Removal File Straight



Crafted from tough metal, it's designed for removing dust and dirt from dried paint. Simply lay it flat on the surface and gently cut out contamination with minimal damage.

\$120

DRF 10

Dust Removal Magnetic Holder



\$30

DRF 50

Our dust removal file applicator is designed to be used with DRF10. This applicator features a magnet to secure the file during application.

Anti-Gravel Range



- Solvent-based stone chip protection
- 2 colours - grey or black
- Flexible, good adhesion
- Anti-gravel coating based on synthetic resins and rubbers
- Fast drying, can be applied drip-free
- Excellent rust- and gravel protection, reduces the noise inside cars
- For use on front and rear spoilers, sills, side skirts, wheel arches, etc
- Can be painted over when fully dry
- Available in 1 litre and Aerosol

\$18.00

TSP210 / TSP230



\$24.50

AGB01 / AGG01

W5784 Gun



PERFECT FOR THE FINIXA ANTI-GRAVEL 1 LITRE RANGE

- The WellMade W5784 undercoating gun, with flexible hose and flexy nozzle for rust protection.
- Ideal gun for the Finixa Anti-gravel 1 litre range

\$75.30

W5784

Reusable Nylon Spray Overalls

High quality carbon fibre reinforced one piece spray overalls. Robust zips and handy pockets. Plenty of vents to remain cool while working.



Available in small to 6XL

\$56.50

PSOVERALL##

Airfed Respirator



The PS.DPS is our latest economy double diaphragm pump, suitable for pumping of paint products or adhesives. Pumps directly from 20 litre drums. Supplied with stand.

\$800

PS.DPS

SmartLine Ceramic range has extremely fast cut and consistent finish, stays sharp and keeps an extra long life, delivers outstanding performance with less pressure. Excellent durability and high efficiency that reduces your overall process time



70mm Roll P60

\$ 45⁰⁰

70mm Roll P80-320

\$ 42⁰⁰

115mm Roll P40

\$ 85⁰⁰

115mm Roll P60

\$ 76⁹⁵

115mm Roll P80-500

\$ 62⁰⁰

SMRP70X12MH** / SMRP115X12MH**

The Iwata airfed respirator comes complete with belt, face hood, and gun hose.

\$840

AF2100

Breathable Hoses

Twin Air/Paint Hoses



AFBH10R

\$105⁹⁵

AFBH15

\$159⁹⁵

AFBH20

\$198⁹⁵



BH23.2

\$ 69⁹⁵

BH23.5

\$ 94⁹⁵

BH23.7

\$116⁹⁵

BH23.10

\$145⁹⁵

BH23.15

\$184⁹⁵

IBH23.20

\$249⁹⁵



SMDP76NH**

75mm NH P80

\$ 12⁷⁰

75mm NH P120-800

\$ 11⁹⁵

Walcom® Spray Gun Light 360 True Light

- New innovative and patented spray gun light.
- Circular LED ring guarantees perfect lighting of the painted surface.
- True colour sun light aids colour matching.
- Fits most spray guns using 4 universal air cap ring adaptors.
- Two hour rechargeable battery.
- ATEX approved for spray booth use.



\$445

60172

NOVA HVLP Gravity Spray Gun 1.3 & 1.8mm



The Nova HVLP Gravity spray gun provides quality performance at an affordable price point. Modern design with black gravity cup suitable for UV coatings.

\$95.00

NOVA-1.3-1.8

Walcom® Spray Gun Light 360 True Light with meter

- Integrated digital meter displays spray distance, battery level, and light intensity
- Real-time feedback with arrows helps guide you to maintain the ideal distance, ensuring precision and control.
- True colour sun light aids colour matching
- Includes 5 universal air cap ring adapters to fit most spray guns
- Two-hour rechargeable battery
- Go-pro compatible
- ATEX approved for spray booth use.



\$590

60176

NOVA Light 1.0mm HVLP Gravity Spray Gun



The Nova Light HVLP medium size gravity spray gun. Smaller body spray gun ideal for touch-ups, small jobs and on-site work.

\$91.00

NOVA-LIGHT

LIGHTWEIGHT

NON-SLIP FEET

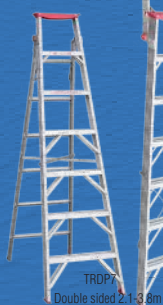
ANODISED ALUMINIUM



TRDS3D
Double sided 0.90m



TRDS4D
Double sided 1.2m



TRDP7
Double sided 2.1-3.8m



AP3-4-5-6
Aluminium Planks 3 - 4 - 5 & 6m

FREE

HEAD TORCH

ON ANY INDALEX LADDER

\$158 **\$195** **\$355** **\$265** **\$340** **\$418** **\$497**

TRDS3D

TRDS4D

TRDP7

AP3

AP4

AP5

AP6

ENQUIRE IN STORE FOR THE FULL RANGE OF INDALEX LADDERS AVAILABLE

TOOLTIME

15pc Wrench Reversible Geared Set 8-19mm

- Chrome Vanadium Steel
- Two-way reversible gear design for quick and easy fastening and loosening works
- Metal storage Case

\$341

GBA1541



TOPTUL®

Screwdriver Socket & Bit Set

- 54 Pieces
- 3 position 20 tooth ratcheting action (forward / lock / reverse)
- Handy moulded plastic storage case

\$49.00

GAA15401

TOPTUL®



Socket & Bit Set 1/4" Dr

Professional grade socket set.

- 41 pieces
- Satin Chrome Finished
- Bit holder rail swivel upwards for easy access
- Robust, high quality and light weight
- Plastic Storage Tool Box

\$98.50

GADW4101

TOPTUL®



Screwdriver Set Extra Long 3pc

- Extra Long Slotted Anti-Slip Screwdriver
- Extra Long Phillips Anti-Slip Screwdrivers

\$44.80

GAAE0306

TOPTUL®



Tyre-Inflator W/50mm gauge dual hd chuck

\$64.50

W2046B

Tyre-Inflator W/50mm gauge with clip-on connection

\$64.50

W2046C

VIAIR



3 Pcs Pliers Set

- Cushion Grip Plier Set 3 Piece
- Ergonomically designed
- Precision hardened head
- High frequency hardened cutting edge

\$88.50

GAAE0307

TOPTUL®



Bodywork Workshop New Zealand 2025

HAMILTON 24th May PALMERSTON NORTH 11th/12th July



To make a booking - please contact your nearest stockist or go to www.melomotive.com/training/workshops-nz

LEARN DESIGN STUDIO METHODS!

- Increase productivity and efficiency.
- Easily achieve high standards of bodywork.
- Reduce sanding time and product usage.
- Increase an understanding of surface.
- Accurately apply filler over large areas.

paintsmart

MELOMOTIVE
RESTORE • REBUILD • REFINISH

Linkup Paints Bay of Plenty

07 571 8921
10 Barberry St
Judea, Tauranga



linkuppaints
BAY OF PLENTY GISBORNE

www.linkupbop.co.nz

Linkup Paints Gisborne

06 863 0592
1/458 Gladstone Road
Te Hapara, Gisborne

Paint Smart Distributors Nationwide:

Whangarei Paint Centre | Wairau Paint Centre - Auckland | Linkup Paints - Hamilton | **Linkup Paints - Bay of Plenty** | **Linkup Paints - Gisborne** | Complete Paints - Napier | Complete Paints - Palmerston North | Paint Spot - Hastings | Linkup Performance Coatings - Auckland | Linkup Performance Coatings - Wellington