



ST JOHN'S
Anglican College



ANNUAL REPORT

2020

St John's Anglican College is a Kindergarten to Year 12 co-educational Christian school where every student is empowered to excel and equipped to embrace the challenge of any future. Our mission is to inspire lifelong learning by living faith with the courage to lead self and serve others.

This report has been compiled by St John's Anglican College to meet reporting obligations of the Queensland and Australian Governments

Our Students.

St John's students gain the capacity, insight and knowledge they need to inspire real change in their community and the world. By providing our students with diverse opportunities and experiences, they develop character and agility within a supportive environment. Every St John's student is unique. What they all have in common is the confidence to embrace the challenge of any future, equipping them to make their own positive impact on the world.

STUDENT POPULATION

519
FEMALE
STUDENTS

1100
TOTAL
STUDENTS

581
MALE
STUDENTS

1%
INDIGENOUS
STUDENTS



STUDENT ATTENDANCE

95.29%
PREP TO
YEAR 6

94.47%
YEAR 7 TO
YEAR 12

Denotes the average student attendance rate. Rolls are marked online every lesson and in hard copy twice a day. Parents/guardians are notified where the College has not been notified of an absence.



APPARENT RETENTION RATE - YEAR 10 TO 12



NAPLAN RESULTS

NAPLAN did not take place in 2020 due to COVID-19.

The College's 2019 results are included as indication of previous achievements.

YEAR 3 2019	READING	WRITING	SPELLING	GRAMMAR	NUMERACY
ST JOHN'S	457.7	432.7	474.8	482.1	444.6
STATE AVERAGE	425.2	412.2	410	430.5	397.4
NATIONAL AVERAGE	432.3	423.1	418.7	439.8	408.1

YEAR 5 2019	READING	WRITING	SPELLING	GRAMMAR	NUMERACY
ST JOHN'S	547.8	491.2	436	540.2	553.2
STATE AVERAGE	501.7	463.3	494.2	495.7	490.9
NATIONAL AVERAGE	506	473.9	500.7	499.1	495.8

YEAR 7 2019	READING	WRITING	SPELLING	GRAMMAR	NUMERACY
ST JOHN'S	575.6	527.4	575.4	574	589.1
STATE AVERAGE	542.5	502	542	540.1	547.2
NATIONAL AVERAGE	546	513.2	545.6	541.7	554.1

YEAR 9 2019	READING	WRITING	SPELLING	GRAMMAR	NUMERACY
ST JOHN'S	609.7	572.9	611.7	616.7	617.3
STATE AVERAGE	570.3	533.5	577.3	570.3	584.5
NATIONAL AVERAGE	580.4	548.9	582.3	573.2	592

Our Staff.

STAFF COMPOSITION



St John's staff have undertaken professional development (PD) activities in the new ATAR system in preparation for its implementation in the coming years. Staff attending professional development was greatly impacted by COVID-19 however the participation of the teaching staff both in school and external professional development activities during 2020 was 100%.



TEACHING STAFF

\$18,684
INVESTMENT
IN PD

95.6%
ATTENDANCE
RATE

83.8%
RETENTION
RATE

Denotes the average teaching staff attendance for the school, based on unplanned absences of sick and emergency leave periods of up to five days during 2020.

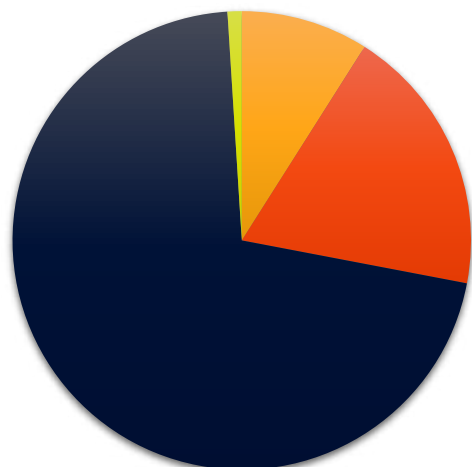
Denotes the retention rate of permanent teaching staff from the previous year.

COLLEGE FINANCES

The following pie charts summarise the recurrent funding and expenses of St John's Anglican College broken down by source.



AUSTRALIAN GOVERNMENT RECURRENT FUNDING	36%
STATE/TERRITORY GOVERNMENT RECURRENT FUNDING	10%
FEES, CHARGES AND PARENT CONTRIBUTIONS	53%
OTHER PRIVATE SOURCES	1%

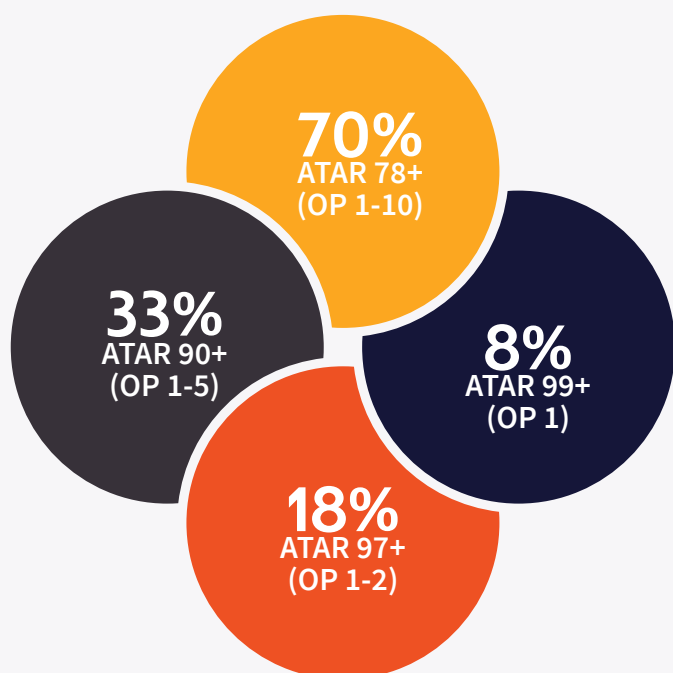


STAFF RELATED EXPENSES	71%
OTHER OPERATING EXPENSES	19%
DEPRECIATION	9%
INTEREST	1%



Our Graduates.

2020 ATAR RESULTS



Nine of St John's 2020 senior students achieved an A grade or above in all six subjects.



St John's 2020 graduates were in the top 10% in Queensland (ATAR 90 and above)



OUTCOMES FOR OUR 2020 YEAR 12 COHORT

Number of students awarded a Senior Statement	102
Number of students awarded a Queensland Certificate of Individual Achievement	0
Number of students who received an ATAR*	67
Number of students who are completing or completed a School-based Apprenticeship or Traineeship (SAT)	5
Number of students awarded one or more Vocational Education and Training (VET) qualifications:	20
Number of students awarded a Queensland Certificate of Education at the end of Year 12	96

* Students must give permission to QTAC for schools to be advised of ATARs. Not all students in the 2020 Year 12 cohort have done so.

96%
OP 1-15
EQUIVALENT

99%
SAT, QCE,
IBD, VET
QUALIFICATION

81%
RECEIVED
QTAC OFFER

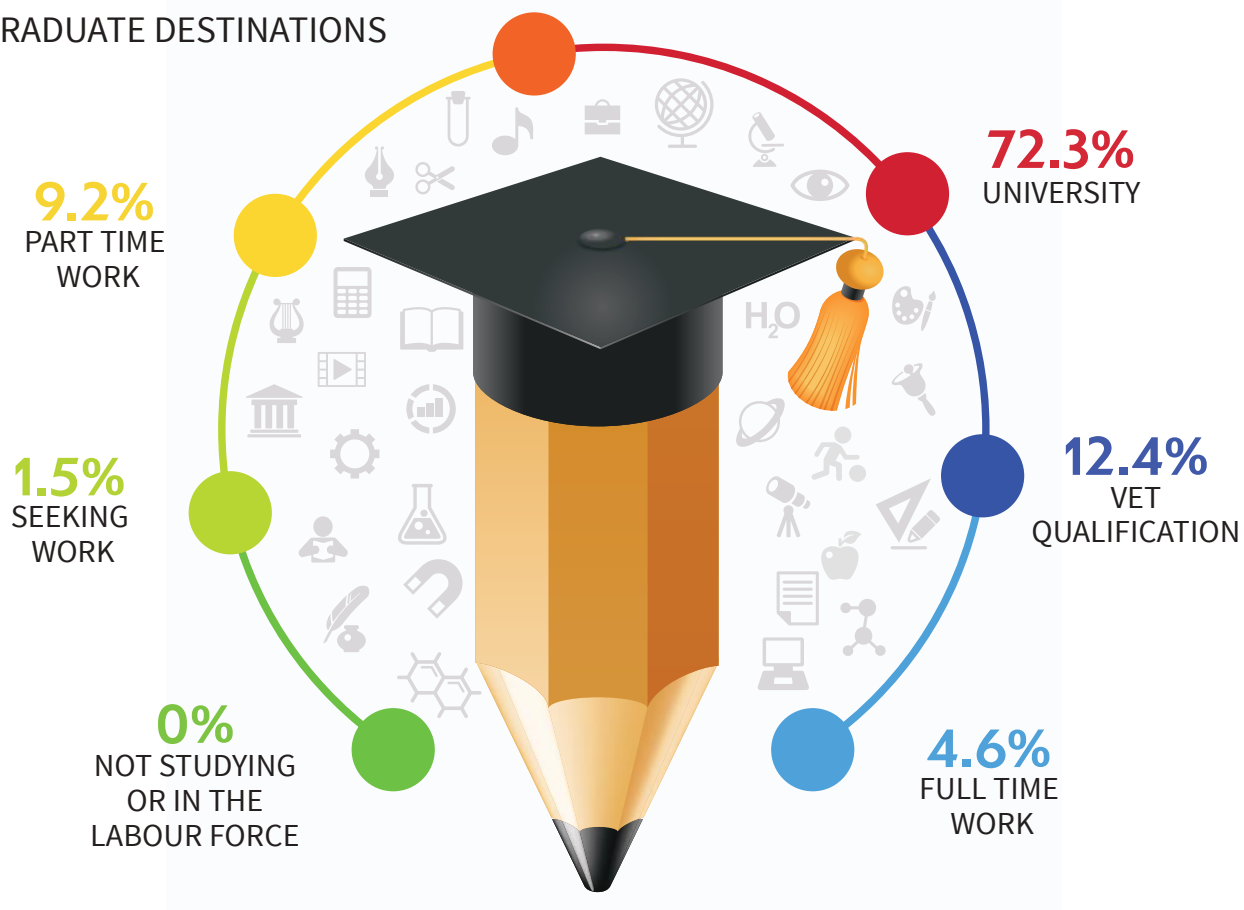
Percentage of Year 12 students who received an OP1-15 equivalent and advised the College.

Percentage of Year 12 students who are completing or completed a SAT or were awarded one or more of the following: QCE, IBD, VET qualification.

Percentage of Queensland Tertiary Admissions Centre (QTAC) applicants receiving an offer.



2020 GRADUATE DESTINATIONS

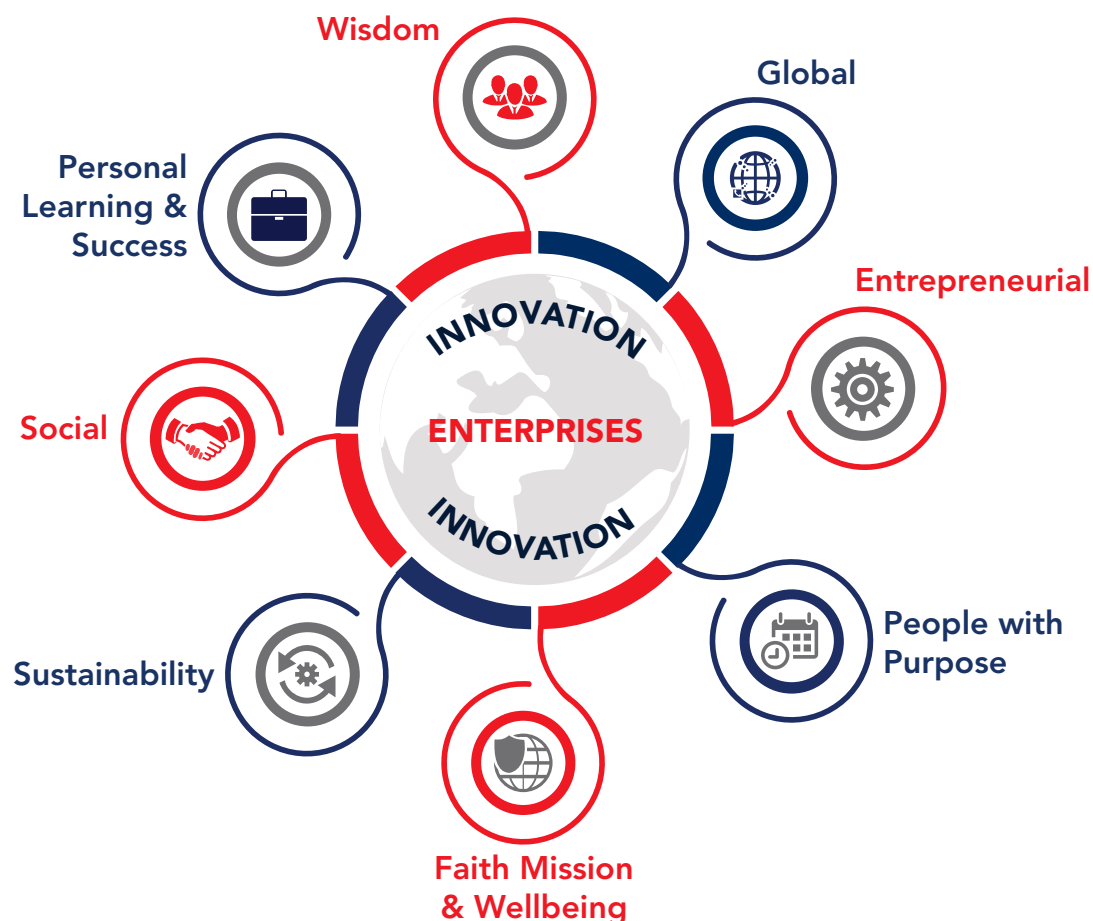


Our Strategic Direction.

ST JOHN'S ENTERPRISE MODEL

The College values of **FAITH, HOPE, LOVE, COURAGE, COMMUNITY** and **JUSTICE** are all underpinned by eight enterprises which highlight the strategic intentions for St John's.

These enterprises will create opportunities to respond to the challenges of today and highlight initiatives to anticipate future change. The strategies are agile in nature and positioned to be responsive in a changing world.



PERSONAL LEARNING AND SUCCESS ENTERPRISE

To encourage a culture of lifelong learning by developing adaptive learning programs, technologies and professional partnerships in the St John's community

- International Baccalaureate Primary Years Program
- ATAR
- Vocational Education and Training
- SOAR Extension Program (English, Maths, Years 7-10)
- The Rite Journey (Year 9)
- Art Club
- Chess
- Reading Club
- Maker Spaces
- Science Club
- Dance
- Running Club
- Debating
- STEM Institute
- Titration
- Tecrew

GLOBAL ENTERPRISE

To develop a global village that connects, partners and fosters learning and enrichment opportunities for our students and educators.

- Mandarin Chinese (Prep to Year 12)
- German (Years 7 to 9)
- Dragon Boat Team (International Students only)
- Global Conscience Group

SUSTAINABILITY ENTERPRISE

To foster a culture of sustainability where resources are optimised for the benefit of St John's community whilst building and strengthening the foundations for a sustainable and positive future.

- Environmental Club

ENTREPRENEURIAL ENTERPRISE

To foster a culture of collaboration and entrepreneurial spirit through the development of knowledge partnerships.

- Young Inventors
- STEM Sprouts
- Coding Club
- Robotics Club

SOCIAL ENTERPRISE

To cultivate a connected and engaged community that shares the importance of St John's values and aspirations in learning.

Parents are encouraged to be involved in their child's education, to work in conjunction with the school to ensure that students are supported. Parents can be actively involved in the following ways:

- Parent / Teacher interviews
- Information sessions for different year levels
- Open Days
- Special Assemblies

Parents are also encouraged to be involved in the P&F Association, and its subcommittees: Friends of the Arts (FOTA), Supporters of Sport (SoS) and Friends of the School (FoS).

The College communicates with families in variety of ways:

- Daily Email (during term time)
- College App
- Ripples Newsletter
- Social Media Channels
- College Yearbook
- Footprints Magazine

FAITH MISSION AND WELLBEING ENTERPRISE

To affirm the relevance and importance of our Anglican mission through nurturing the holistic development of our learning community.

Student wellbeing is led by our Deputy Principal – Pastoral Care, College Psychologist and College Chaplain. Students are placed in a house where they are provided with support and allowed to develop a sense of community and belonging through various house activities. In the Middle and Senior Schools, students are placed in vertical groups which includes students from Years 7 to 9 and Years 10 to 12 in the same house. Students remain with the same Home Group teacher for their middle and senior schooling. This vertical Home Group system generates interconnectedness across all year levels, and allows for role modelling / mentoring relationships to occur, as well as fostering house and College spirit.

The College has a Student Welfare Policy which applies to all staff, students, volunteers and contractors associated with the College. The policy has associated procedures which cover bullying and how it is dealt with by the College.

Outdoor Education

- Years 3 to 11 Camp Program
- Duke of Edinburgh's International Award

Music

- Compulsory Instrumental Music Program (Years 3 to 7)
- Strings from Year 3
- Band from Year 5
- Choir from Year 1
- Various music ensembles
- Private Instrumental Music Lessons from Year 7
- Musical (every two years, Years 6 to 12)

Sport

Participation in The Associated Schools (TAS) Sporting Association (Years 7 to 12) including Cricket, Rugby Union and Soccer (boys only), Netball, Hockey and Touch Football (girls only), Volleyball, Basketball, Tennis, Swimming, Cross Country and Athletics.

Participation in the Junior TAS Sporting Association (Years 4 to 12) including Swimming, Hockey, Cricket, Cross Country, Netball, Rugby Union, Athletics, Touch Football, Soccer, AFL, Auskick, Basketball (Year 6 only), as well as:

- Skills Development Programs (Years 2 to 3)
- Association with the Richland Lions Football Club
- Football and Hockey Academies
- School Representation at District, Regional and State levels in AFL, Athletics, Basketball, Cricket, Cross Country, Football, Hockey, Netball, Rugby Union, swimming, Tennis, Touch football, Volleyball, Water Polo, Futsal, Equestrian.



ST JOHN'S

Anglican College

St John's Anglican College

Junior School
Kindergarten to Year 6
Alpine Place, Forest Lake QLD 4078
07 3372 0888

Middle and Senior School
Years 7 to 12
College Avenue, Forest Lake QLD 4078
07 3372 0111

PO Box 4078 Forest Lake QLD 4078
ABN 14 060 936 576 CRICOS Provider #01406C

stjohnsanglicancollege.com.au