

Shining
light on
September



Blood Cancer
Awareness
Month

Programs
Partners



Projects
Educational courses

2
3
4

3

World
CLL
Day



4

Research
Grants



5

Diagnosis



6

World
Leukemia
Day



7

EHA
Campus



8

European
Affairs



EVENTS

9

Guidelines



10

World
MPN
Day



11

T2EVOLVE



12

HOPE
Meetings



13

Research
Grants



14

EHA2022



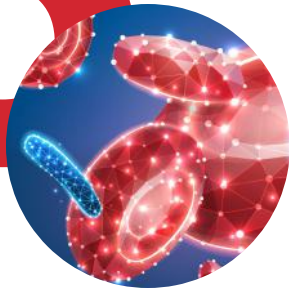
15

World
Lymphoma
Awareness
Day



16

Hematology
Updates



17

YoungEHA



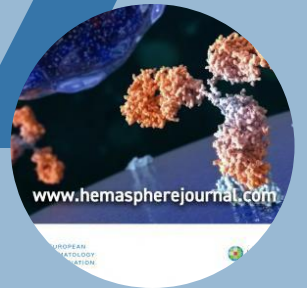
18

Marrow Donor
Awareness
Day



19

HemaSphere



20

GoCART



21

World
CML
Day



22

Upcoming
Meetings



23

World
Cancer
Research
Day



24

HARMONY
Alliance



25

T2EVOLVE



26

EHA-SWG
Meeting



27

World
Heart
Day



28

World Big
Data for Blood
Cancer
Awareness Day



CLL



World *Chronic Lymphocytic Leukemia* Day

3

Did you know that despite it being the most common leukemia, CLL is classified as a rare cancer? Below are 5 CLL-focused articles of interest:

HemaSphere



This course explores the current treatment of Chronic Lymphocytic Leukemia (CLL), focusing on the most recent advances in the genetic landscape of the disease, identification of treatment predictors, and choice of tailored therapy options in naïve and relapsed patients.



GRANTS

Kick-off Grant



The EHA Kick-off Grant is a 1-year grant intended to support basic and translational early career researchers in hematology.

It allows them to test a high-risk but potentially high impact idea that is lacking solid preliminary data and is therefore too premature to submit for regular funding.

Ideally it should provide the opportunity for recipients to develop a new project that could be submitted for an EHA standard grant (or to any other funding body).

Bilateral Collaborative Grant



The EHA Bilateral Collaborative Grant is intended to encourage and support collaboration between two independent research groups in basic/translational hematology research.

Located in two different European countries.

The grant is for 2 years, at €160.000 per year to be divided between the two research groups. No more than 70% of the total grant should be allocated to any one team.

Application Deadline:
September 15

[Learn more](#)

Are you ready for the EU Regulation on in vitro diagnostic medical devices (IVDR)?

How will the IVDR impact your lab?

1

Stricter regulations on which laboratory developed diagnostic tests, also known as IH-IVDS, may be used.

2

All new and existing CE-IVDs will be reclassified using a system based on risk to patients and the public.

3

The majority of IVD Directive (IVDD) self-certified products must be certified by a notified body according to the IVDR.

4

Use of IH-IVDs will be restricted if an equivalent CE-IVD is available on the market.

5

Laboratories that continue to use IH-IVDs are subject to stricter requirements and must meet ISO 15189 requirements.

6

Existing CE-IVDs are in danger of disappearing from the market if their manufacturers lack the knowledge, incentives, or budget to go through the notified bodies appraisal.

The new EU Regulation on in vitro diagnostic medical devices (IVDR) will come into full effect per May 26, 2022 and will have substantial consequences for diagnostic laboratories, including those involved in hematological malignancy screenings. This means that the transition to the IVDR needs to be prepared carefully, and it is EHA's aim to support European hematology laboratories with this preparation to ensure continuity in laboratory diagnostics in 2022 and onward.

The European Hematology Association Taskforce on IVD, in collaboration with the BioMed Alliance Taskforce on IVD and with expertise from Professor Christa Cobbaert from the European Federation of Clinical Chemistry and Laboratory Medicine, has elaborated a questionnaire on the current use of different IVD tests in diagnostic laboratories. The objective of the questionnaire is to gain insight into the current situation for medical laboratories, in particular the degree of (un)preparedness of medical laboratories for the IVDR implementation, and to make an accurate assessment of the potential impact that the IVDR will have on diagnostic laboratories and their test menu.

Learn more

HemaSphere

LEUKEMIA



Did you know that
There are over
300,000 deaths
caused by leukemia
worldwide? Below are
5 leukemia-focused
articles of interest:

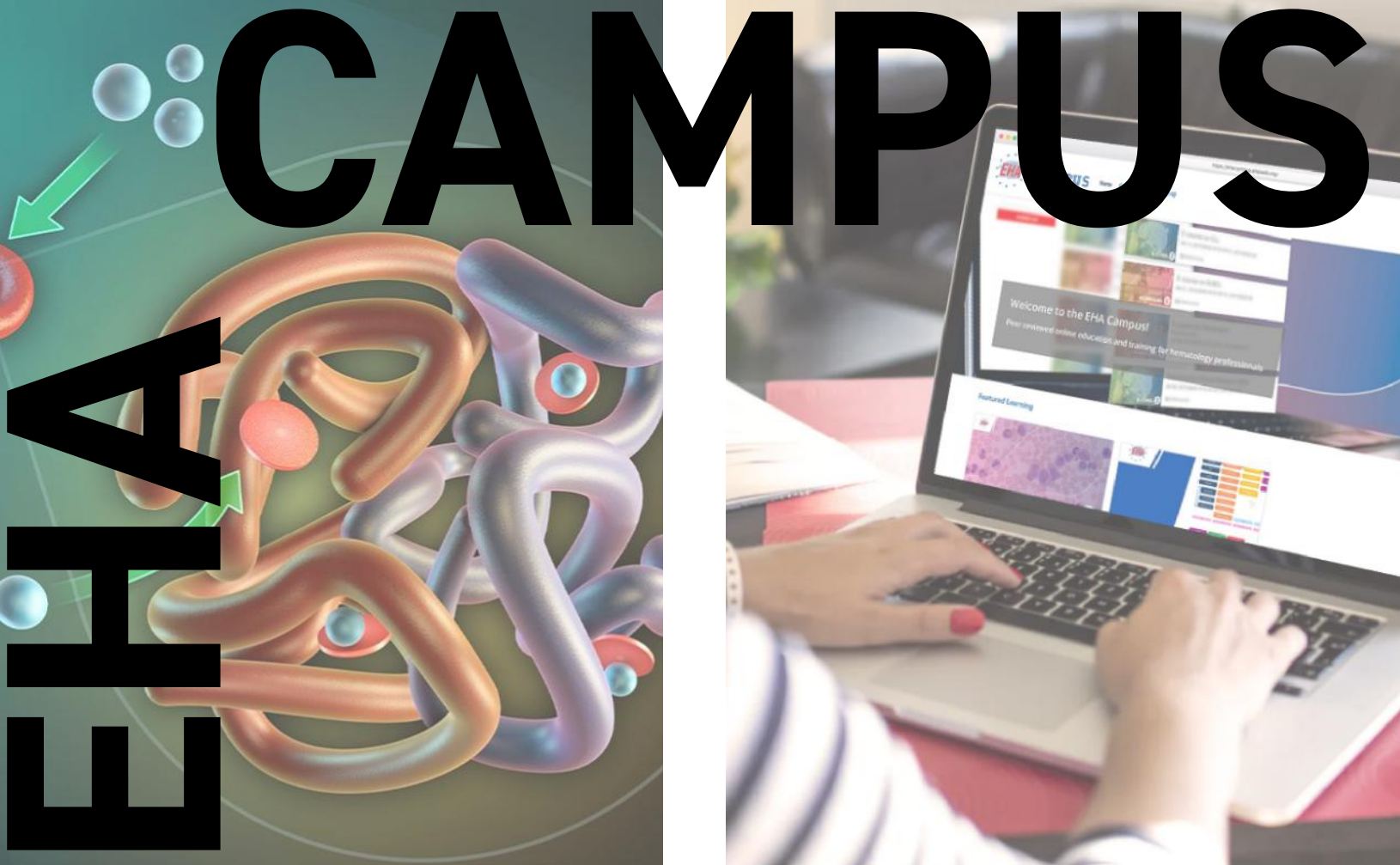
HemaSphere

World *Leukemia* Day

The EHA Hematology Updates Program explores the changing landscape in the field of Hematology. These courses are adapted from the Hematology Updates webinars conducted by EHA and LSHBT (Lebanese Society of Hematology and Blood Transfusion).

Learn more about the Hematology Update on Acute Myeloid Leukemia (AML):





EHA Campus

The EHA Campus gives you access to learning tools created for and by hematology professionals, packed with features especially designed for professional learners like you.

Peer-reviewed content

This unique platform is only available for EHA members and will be continuously updated with new learning materials.

The Campus is:

- Easy to use,
- Mobile-friendly,
- Interactive and includes self-assessment opportunities,
- Allows you to directly test what you learned, earn a certificate and EBAH credits (only after the first three months).



EUROPEAN AFFAIRS

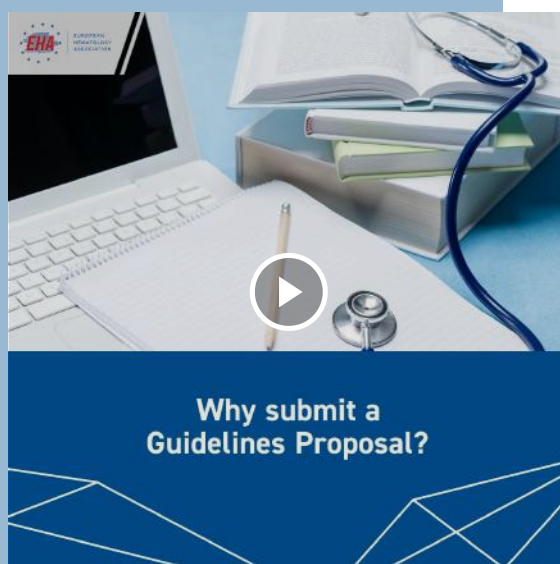


By engaging with EU institutions and other relevant stakeholders – patients, other medical professions, pharmaceutical companies, issue-based expert groups – EHA promotes the interests of its members in key policy areas.

EHA has produced several position papers on blood cancer, including fair pricing of innovative medicines and personalized medicine.

[Learn more](#)

SENTINEL GUIDELINES



EHA creates clinical practice guidelines for diagnosis and treatment of hematologic diseases. This initiative started in 2019 with the establishment of a Guidelines Committee and the definition of the EHA Methodology for guidelines. Since then, EHA has published guidelines relating to blood cancer:

- Diagnosis and Treatment of Chronic Myelomonocytic Leukemias in Adults,
- Multiple Myeloma: EHA-ESMO Clinical Practice Guidelines for Diagnosis, Treatment and Follow-up,
- Upcoming guideline: Antifungal prophylaxis and therapy in patients with AML treated with new agents.

**Application Deadline:
September 10**

[Learn more](#)

MPN

World *Myeloproliferative Neoplasms* Day

Browse some of the latest hematological research on MPN and leukemic transformation:



Learn more about MPN in the EHA-LSHBT Virtual Hematology Updates: Thrombosis & MPN - Where the malignant and benign hematology meet. On-demand content available until September 26.

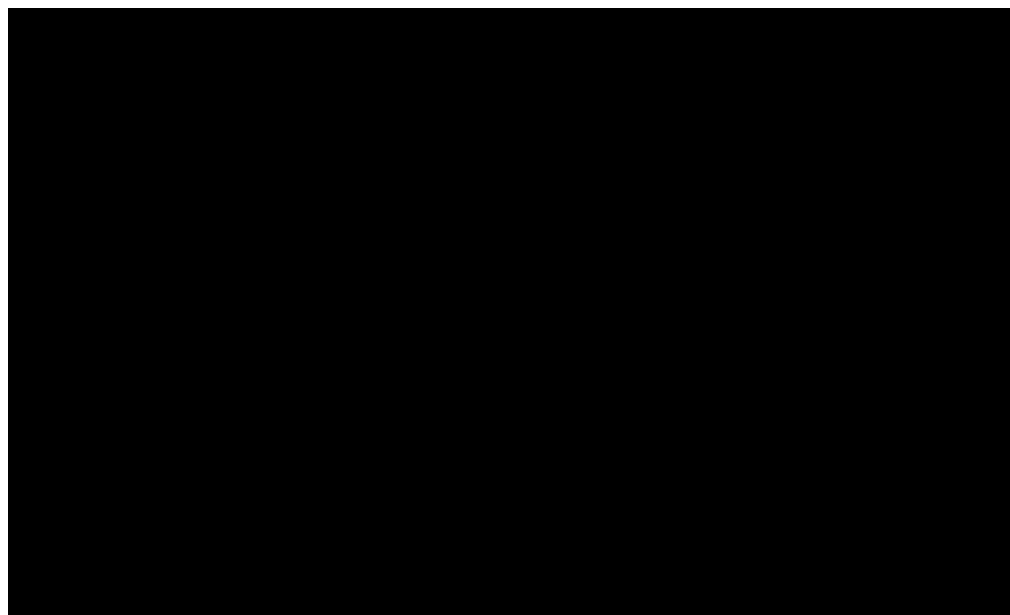
[Learn more](#)





ACCELERATING DEVELOPMENT AND INCREASING AWARENESS AND ACCESS OF PATIENTS WITH CANCER TO IMMUNOTHERAPY

The strategic objective of T2EVOLVE is to accelerate the process of developing CAR T-cell therapy in the European Union (EU), to grant EU patients access to the most ground-breaking and best available medical care, while providing guidance on the implementation of this novel treatment into the EU healthcare system in a sustainable way, and to help alleviate the financial burden of health care on the economy and society. Moreover, patient involvement will ensure that the perspectives of cancer patients are at the center, in the research setting as well as along the cancer care continuum.



Learn more at t2evolve.com



EUROPEAN
HEMATOLOGY
ASSOCIATION



innovative
medicines
initiative

MEETINGS

HOPE

Highlights of Past EHA

Asia - MENA - Latin America

Dates: September 10-11 | September 23-24 | October 8-9

Location: VIRTUAL



With local hematology associations in Asia, MENA, and LA, EHA works to create a program that will bring a wide range of topics from EHA2021 Virtual Congress to the hematology community in Asia.

[Learn more](#)

GRANTS

EHA Research Grants



The EHA Research Grants are intended for basic and translational lab-based research in hematology. There are three categories for these grants:

- Junior Research Grants: €150,000 over three years,
- Advanced Research Grants: €160,000 over two years,
- Physician Scientist Research Grants: €160,000 over two years.

Each grant type is tailored to different stages of a researcher in hematology's career. Each grant type also features a Topic-in-Focus category covering hemoglobinopathies directed at sickle cell disease and immunotherapy with a focus on CAR T-cells.

EHA Mobility Grants



The EHA Research Mobility Grants have been designed for early-career researchers in hematology looking to advance the boundaries of hematology and build collaboration between the two relevant institutes.

For up to €10,000 in funding, the grant covers travel and accommodation costs for visiting another European institute for a project period of up to three months.

Six months duration is also possible with additional justification and proof of availability of alternative funding to cover the extra time.

Applications open now:

Learn more



EHA2022

HYBRID  VIENNA  JUNE 9-12

June 9 - 12, 2022

taking place virtually,

hosted in Vienna, Austria.

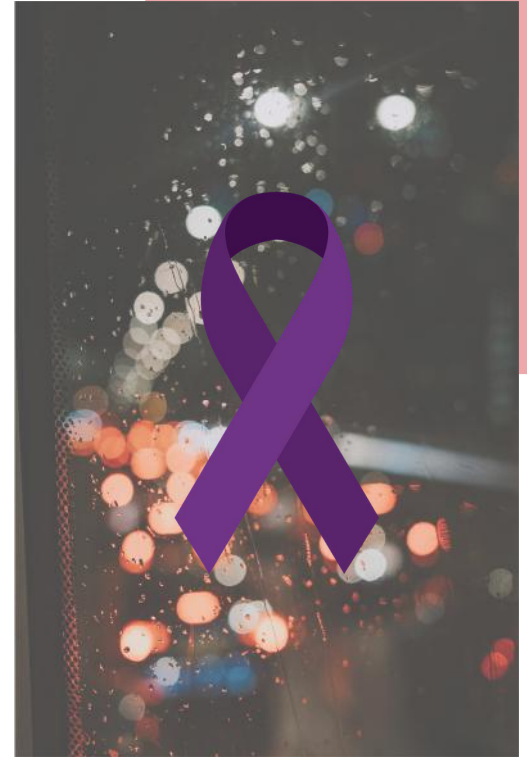
EHA2022: Stay tuned to immerse yourself once again in the latest news in hematology and its subspecialties:

- Cutting-edge evidence-based approaches to diagnosis and treatment,
- Highly anticipated clinical and translational research data,
- Newest developments in innovative techniques, diagnostic tools, and risk-assessment strategies.
- EHA2022 knows no bounds and is intended for medical professionals, national hematology societies, patient groups, medical industry, and media worldwide.

[Learn more](#)

EHA2022

World *Lymphoma* Awareness Day



Browse some of the latest hematological research on lymphoma and treatment approaches:

Clinical cases are regularly published on the EHA Campus. Featuring fictional cases, EHA Campus gives the opportunity to improve your diagnosis skills and understanding of treatment options. On World Lymphoma Awareness Day, two clinical cases for examination:

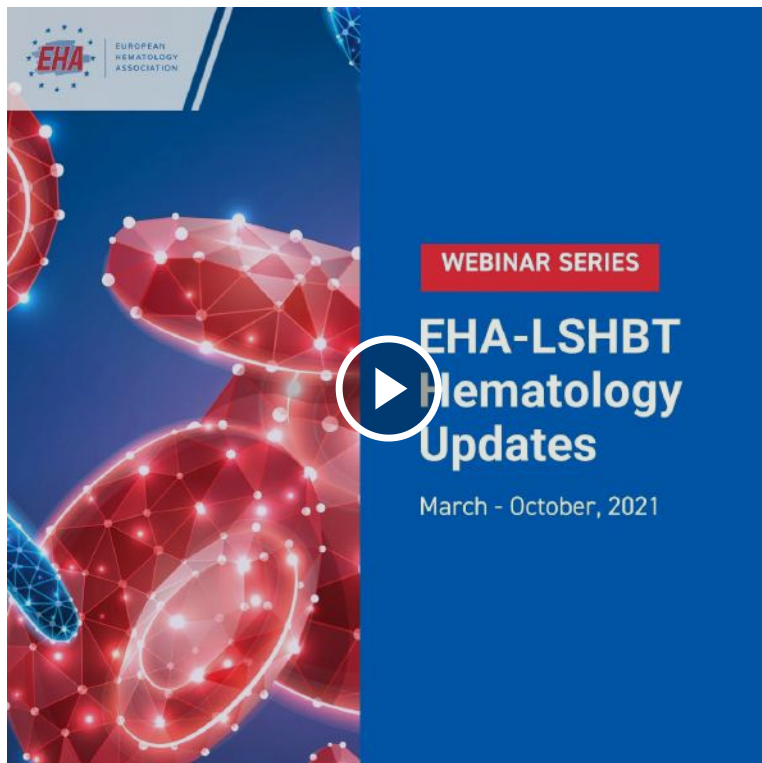


EHA-LSHBT Virtual Hematology Updates

Bleeding disorders & Multiple Myeloma

Dates: September 16, 2021 | **Location:** VIRTUAL

EHA and the Lebanese Society of Hematology and Blood Transfusion (LSHBT) have initiated a webinar course dedicated to practitioners who manage patients with benign and hematologic malignancies. The course will provide them with the practical tools to translate emerging data into the best therapy for their patients, to personalize care, and to apply novel treatment strategies to improve patient outcomes.

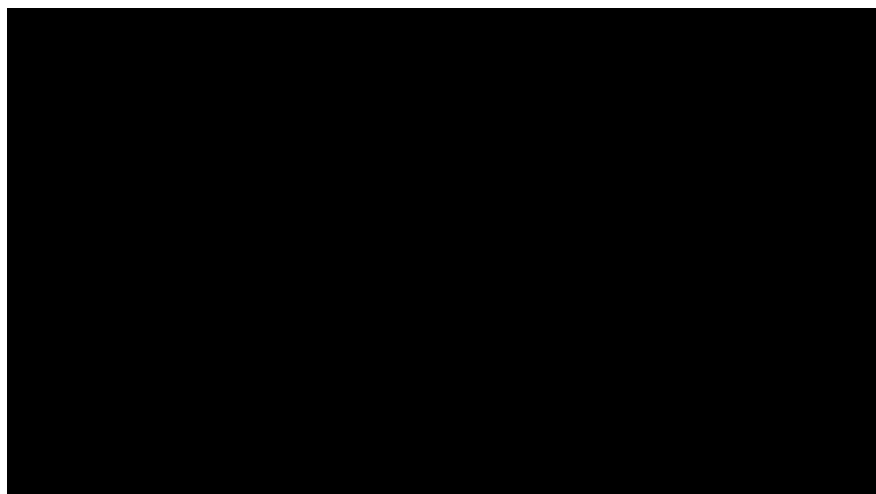


YoungEHA

YoungEHA is an inclusive community focused on inspiring young hematologists and helping them achieve their full potential. We invite all young hematologists to join us in promoting unity amongst peers. YoungEHA believes in you and the “vision of your future”.

“You are just as worthy as a physician and/or a scientist, even if you are, at least for a fleeting amount of time, taking time and focusing all the extra energy on your family. Everything you set out to do [...], you will. Reflecting on it all, I wouldn't change anything no matter how hard it gets.”

- Ana Zelić Kerep, MD,
YoungEHA Ambassador



Learn more

Y
O
U
N
G

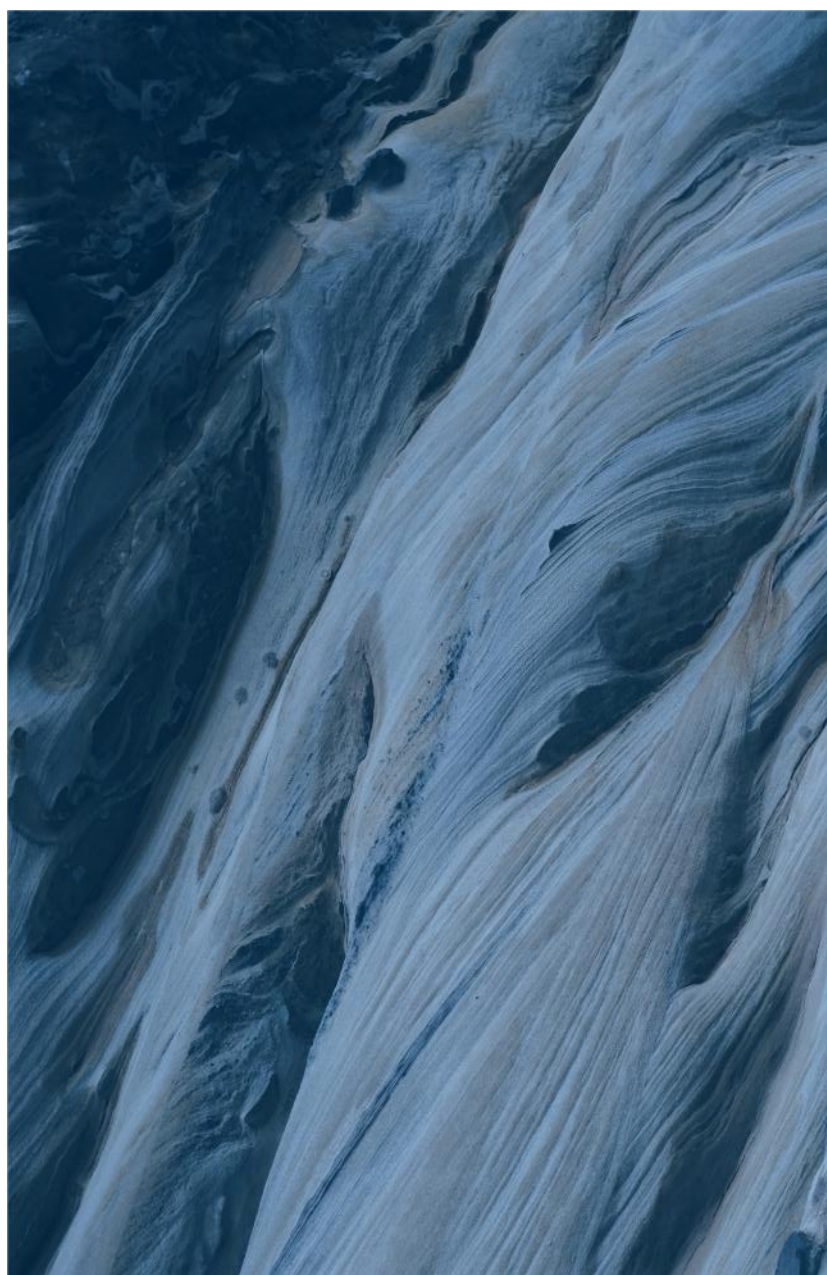
E
H
A

MARROW DONORS

Looking to give your eyes a break while still learning at the same time? The EHA Campus features a unique podcast series on hematopoietic stem cell transplantation (HSCT) in the context of hematological malignancies.



In addition to listening to new developments in HSCT and bone marrow transplantation, the *HemaSphere* journal includes a range of cutting-edge research on bone marrow transplantation.

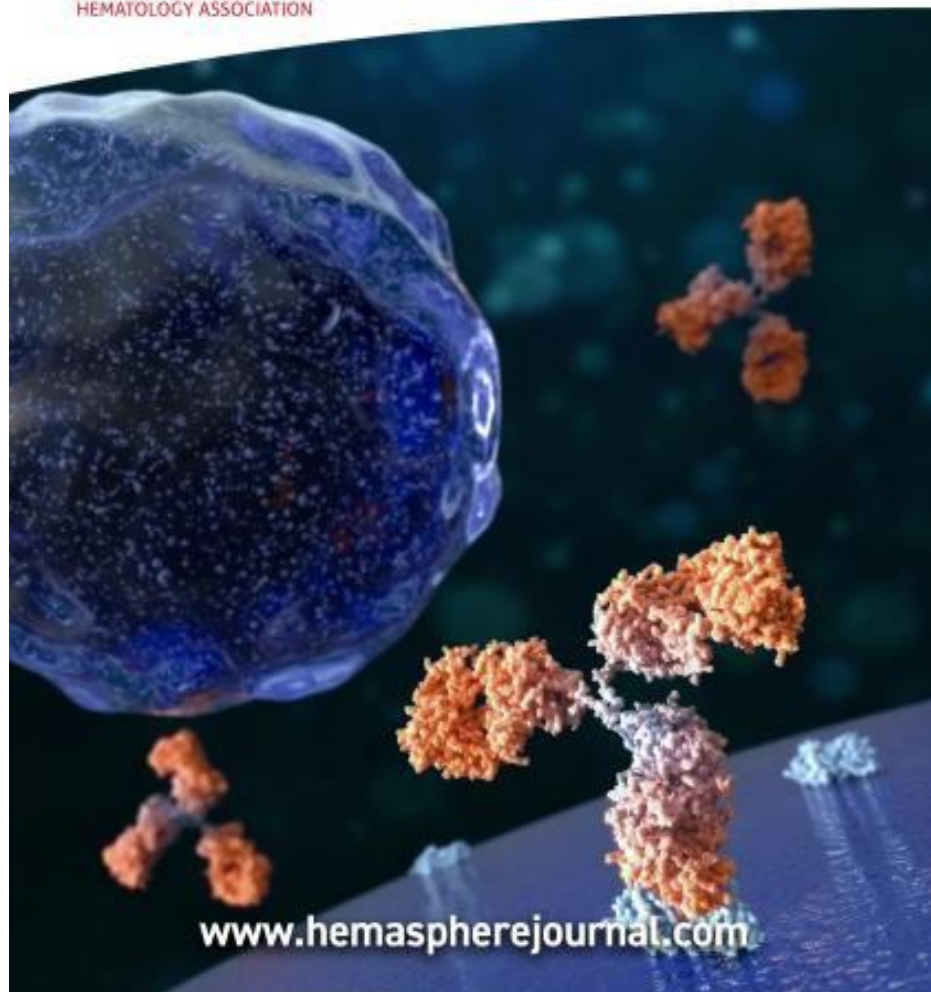


HemaSphere

HemaSphere is the premier hematology information resource, which is covered by the HemaTopics section in the journal. This section provides insightful discussions on all aspects related to hematology, including summaries of important articles, reports of new therapies, discussions on European policy, EHA news, and other hematology news items.

HemaSphere

POWERED BY THE EUROPEAN
HEMATOLOGY ASSOCIATION



Read

HemaSphere



EUROPEAN
HEMATOLOGY
ASSOCIATION

 Wolters Kluwer



GoCART

COALITION

GoCART is a multi-stakeholder coalition of patient representatives, health care professionals, pharmaceutical companies, regulators, Health Technology Assessment (HTA) bodies and reimbursement agencies, and medical organisations, collaborating to maximise the potential of cellular therapies manufactured from cells and tissues of hematopoietic origin.

MAIN GOALS FOR 2021 - 2022

- Consolidate the activities of work package 1 and 2 and to start-up activities for the other work packages on: education, health technology assessments, scientific excellence, and policy and advocacy,
- Consolidate GoCART Coalition governance structure and set-up Coalition management processes,
- Expand GoCART Coalition network and align it with other initiatives.

ACTIVITIES:

Next Clinical Case Discussion Session II

19 October 2021 from 4-5 pm CEST

Panel experts: Anna Sureda, Michael Hudecek, and Sara Ghorashian

Do you want to discuss **your case** with a panel of CAR-T experts?

Please send in your case before **8 October**.

Please contact Yolanda Cabrerizo

Y.Cabrerizo@ehaweb.org) or Sofie Terwel

Sofie.Terwel@ebmt.org) for a case template.

Learn more at
thegocartcoalition.com

World *CML* Day



CML

Browse some of the latest hematological research on chronic myeloid leukemia:



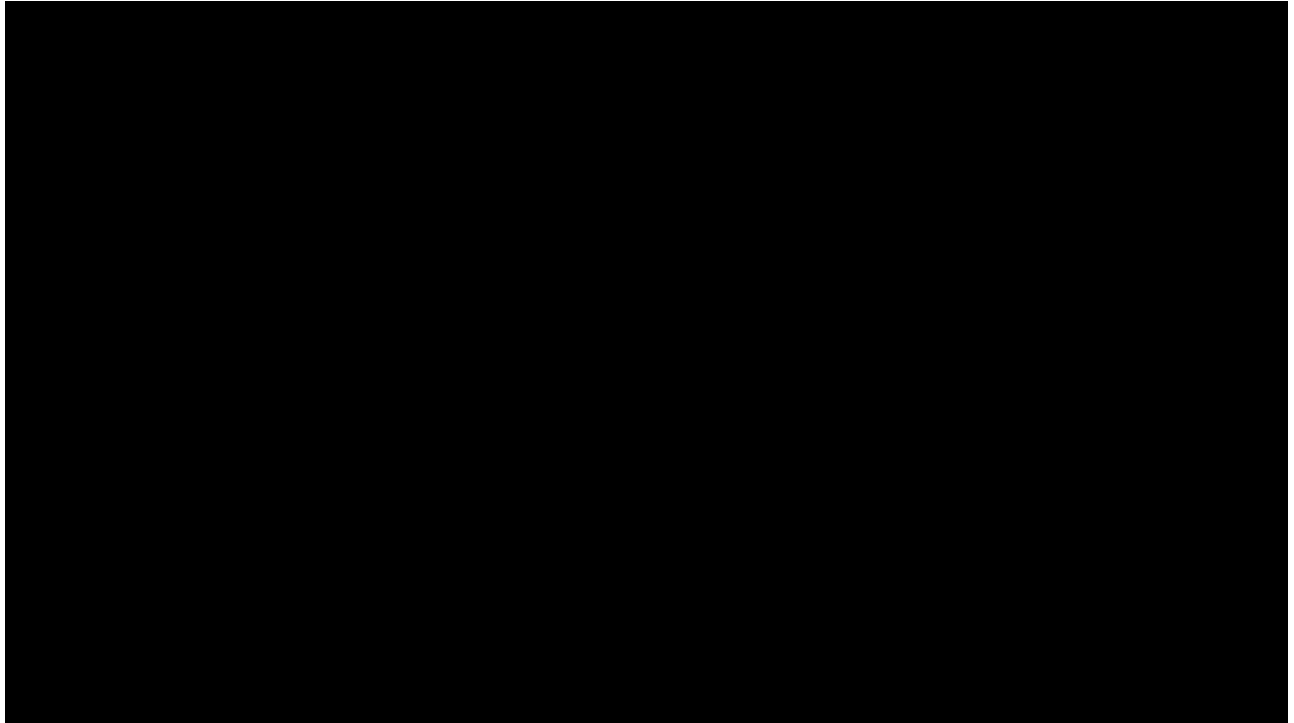
CML requires it's own unique treatment approach. Learn more about treatment options through the EHA Campus on emerging treatment goals in CML.

Learning objectives

- Understanding of the concept of TFR and available data on TFR,
- Understanding the role of standardized, sensitive molecular monitoring for measuring deep molecular responses,
- Understanding the importance of deep molecular responses and considerations for treatment switch in patients without deep molecular responses,
- Understanding potential future developments in the treatment of CML-CP.



Upcoming Meetings



EHA OUTREACH PROGRAM

- EHA has developed an outreach program to ensure that education on hematologic topics can be accessed from all over the world. Outreach programs are:
 - EHA Tutorials,
 - Highlights of Past EHA (HOPE).

EHA JOINT SYMPOSIA

- EHA organizes joint symposia with other (national) societies during the EHA congress as well as other international congresses.

ANNUAL EHA CONGRESS

- The Annual Congress of EHA is a flagship meeting held in a major European city or virtually every June—a significant meeting place for hematologists from multiple areas of specialization.

EHA-SWG Meetings

- EHA partners with Scientific Working Groups (SWGs) to foster science and to spread knowledge in basic, translational, and clinical research in hematology in Europe.

[Learn more](#)

World *Cancer* *Research* Day

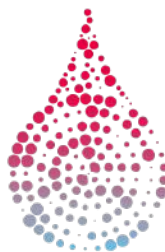
EHA not only supports cancer research, but actively works together with the American Society of Hematology (ASH) to train the next generation of researchers in hematology with the the Translational Research Training in Hematology (TRTH)



Already a researcher and want to make sure your own cancer trial is set up well? Check out this interactive clinical trial map to make sure you don't miss a step.

New advancements in hematology research mean that new methods and knowledge is needed. Learn more about how HemaSphere is publishing the new EHA Research Roadmap.

HARMONY



ALLIANCE

Big Data accelerates better and faster treatment for Blood Cancer Patients

The **HARMONY Alliance** is a European Public-Private Partnership for Big Data in Hematology that captures and mines Big Data on Hematologic Malignancies. Funded by the Innovative Medicines Initiative (IMI), HARMONY unites more than 100 organizations from 18 European countries; medical associations, hospitals, research institutes, patient organizations, pharmaceutical and IT companies.

HARMONY uses Big Data analytics to accelerate the development of more effective treatments for blood cancer patients. Data is stored in the **HARMONY Big Data Platform** (> 70,000 anonymized patient records), making it one of the largest databases of its kind. Leading research teams are currently using this wealth of information to answer critical questions about blood cancers that cannot be addressed with other methods.

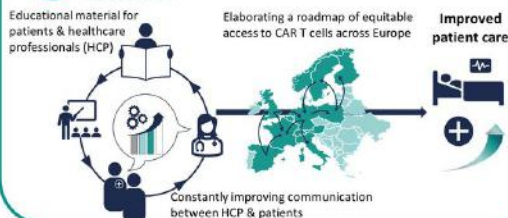
[Learn more](#)

The Global CAR-T Cell Therapy Race

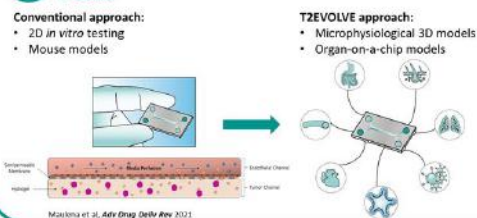
Breaking through the bench-to-bedside bottleneck



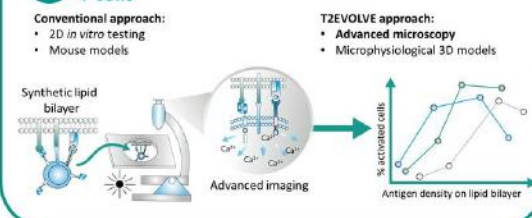
WP2 Patient and health care provider involvement & education



WP3 Models & Tools to Assess Safety of Engineered T cells



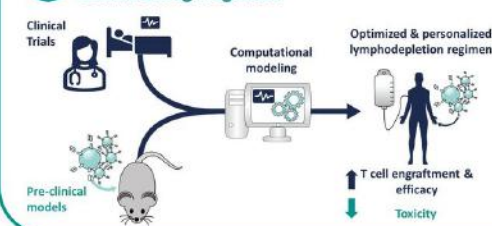
WP4 Models & Tools to Assess Safety of Engineered T cells



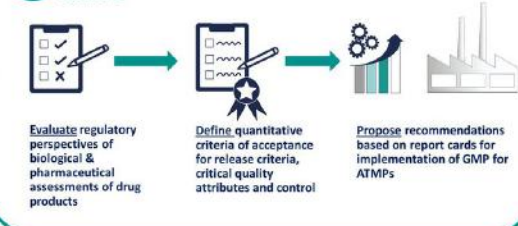
WP5 Gold Standard Analytical Methods in Manufacturing & Monitoring



WP6 Development of Optimal Lymphodepletion/Conditioning Regimen



WP8 Customized EU Pharmacopeia & GMP for ATMPs

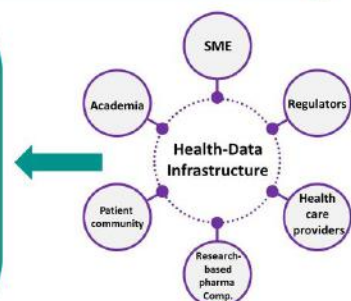
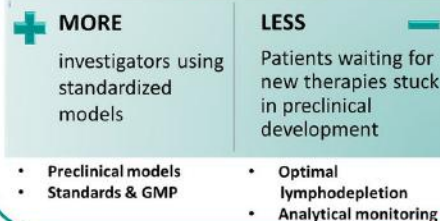


Share your perspectives on

- Development
- Awareness
- Access to engineered cell therapies

Join our Stakeholder community!

T2EVOLVE Vision



SWG

Scientific Meeting

"Patient-Centered Geriatric Hematology"

Dates: October 6-7, 2021 | **Location:** VIRTUAL



Organized in collaboration with EHA & the EHA Scientific Working Group on Hematology and Aging.

This meeting will provide delegates with the latest insights in the field of geriatric hematology, presented by leading hematologists. The innovative format includes discussions with patient advocates and pharmaceutical companies as well as a joint session with *The Lancet Haematology* and *The Lancet Healthy Longevity*.

[Learn more](#)

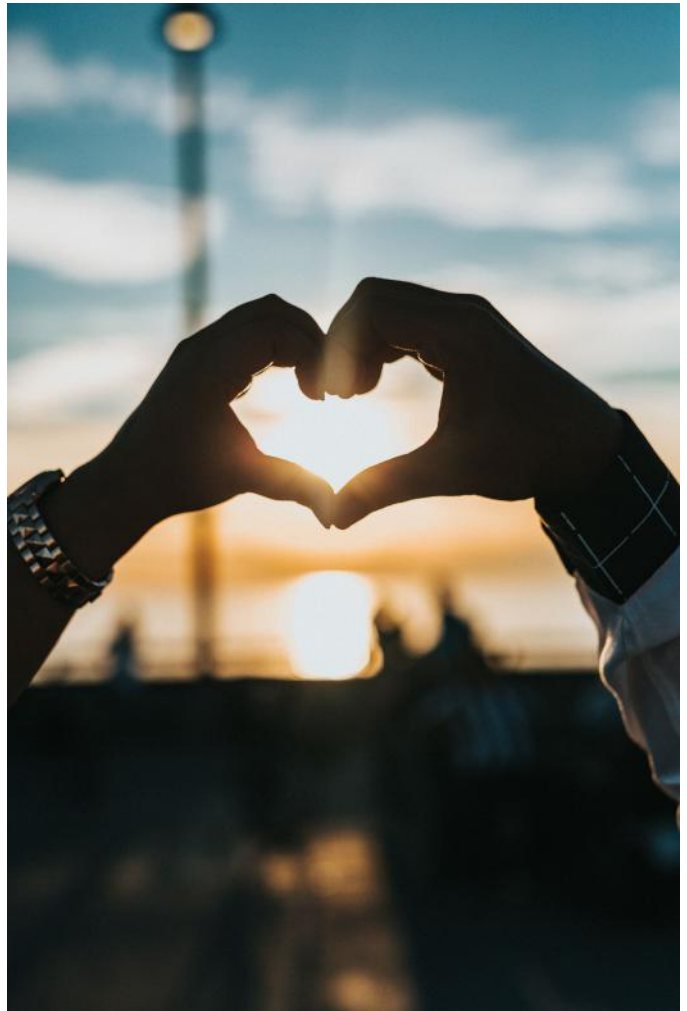
MEETING

HEART

World *Heart* Day

EHA works closely with sister organizations. With the European Society of Cardiology (ESC), EHA collaborates to improve the life of patients by addressing cardio-oncological issues. Hear about how you can manage cardio toxicities in your hospital from past EHA President Prof John Gribben and the Chair of the ESC Council of Cardio Oncology Prof Thomas Suter.

Learn about cardio-oncology from former EHA President John Gribben and Prof Thomas Suter, ESC Council on Cardio-Onocology.



Learn more

BIG DATA



September is blood cancer awareness month:

30 September 2021 is the **1st World Big Data for Blood Cancer Awareness Day**.

Learn more how researchers and clinicians are using Big Data to develop **more personalized treatments for blood cancer patients**.

During the Big Data for Blood Cancer Awareness Day, an **Open Virtual Forum** is organized to explain why big data is needed, what data is needed and what the impact is for patients. This event is open for **patients and anyone with an interest** in (big) data in blood cancer research. Organized by The HARMONY Alliance Patient Cluster.



Learn more