

Winchelsea Star

Price \$1



Your Weekly Community Newspaper

Since 1977

Vol 46 Ed 16

Tuesday 2 May 2023

winchelseastar.org.au



**Winchelsea Probus Club
enjoys Morning Melodies
at the Sphinx Hotel**

Story page 3



Council meeting in Winchelsea

A Council meeting will be held at Eastern Reserve Community Centre, 70 Hopkins St, Winchelsea at 6pm on Tuesday 23 May 2023.



The public is welcome to attend this meeting.

The agenda for this meeting will be posted prior to the meeting at surfcoast.vic.gov.au/CouncilMeetings.

You can live stream the meeting with live captions via the above website.

A recording will be posted after the meeting. The recording will have captions and a transcript available.



WINCHELSEA R.S.L



Winchelsea R.S.L invites you to attend R.S.L clubrooms First Sunday of each Month 1pm - 3pm To view the extensive records of local service men and women. Items of interest.

R.S.L clubrooms are located in 1914 - 1918 Memorial Grandstand At Winchelsea Football Club Main Entrance



To celebrate National Reconciliation Week, Surf Coast Shire Council is proud to present

From the Heart - An evening with Thomas Mayo

Monday 29 May, 6-7.30pm

Council Chambers, 1 Merrijig Drive Torquay

Surf Coast Shire Council is delighted to host author, advocate and campaigner Thomas Mayo as a special guest speaker to mark National Reconciliation Week 2023.

Thomas is a Kaurareg Aboriginal and Kalkalgal, Erubamle Torres Strait Islander man. His most recent book is *The Voice to Parliament Handbook*, co-authored with journalist Kerry O'Brien.

For the past two years, Thomas has traveled the length and breadth of the nation, speaking to small communities and big city gatherings, playing a key role in building the people's movement for a constitutionally enshrined First Nations Voice.

This keynote address will be followed by an audience Q&A. Book sales and signing will also be available at the event.

Book via Eventbrite: ThomasMayoSurfCoast.eventbrite.com



BE A VOICE FOR GENERATIONS





Winchelsea Probus Club visits the Sphinx Hotel

On April 26th members of Winchelsea Probus Club went to the Sphinx for Morning Melodies.

We enjoyed morning tea followed by the show, a tribute to the four Bobbys. Bobby Darin, Bobby Rydell, Bobby Vee and Bobby Vincent. Followed by lunch. A very enjoyable outing.

We will be attending further events each month, if you are interested in attending any of these or interested in joining Probus, we meet on the first Monday of the month at the Senior Citizens rooms, Please contact Linda on 0439817263.





MELBOURNE INTERNATIONAL COMEDY FESTIVAL ROADSHOW

Friday, 26 May 2023 | 7:30 PM







HOSTED BY Mike Goldstein
WITH SPECIAL GUESTS Bronwyn Kuss, Dane Simpson
Lewis Garnham and Lizzy Hoo

Adult \$43, Concession/Student \$37,
COPACC Member \$38.70

Tickets online, at the Box Office and on
03 5232 2077.



Lake Buloke closed to duck hunting

Lake Buloke, near Donald, is closed to hunting from Saturday, 6 May 2023 (inclusive), to prevent disturbance to significant numbers of threatened species.

The Game Management Authority (GMA) and Department of Energy, Environment and Climate Action (DEECA) have been monitoring Lake Buloke since before the opening of the 2023 duck season.

On 4 May 2023, a survey of Lake Buloke detected a large number of threatened species including approximately 650 Blue-billed Duck, 195 Freckled Duck and 250 Australasian (Blue-winged) Shoveler. As a result, the GMA recommended the immediate closure of Lake Buloke to hunting, to prevent disturbance to these threatened species.

Signs will be installed at Lake Buloke alerting hunters to the closure and Authorised Officers will patrol the wetland to ensure compliance.

A total of 15 wetlands are now closed or partially closed to hunting for the 2023 duck hunting season.

To see all wetlands closed or partially closed to hunting for the 2023 duck season, visit gma.vic.gov.au.

Wetlands will continue to be monitored throughout the season. Hunters are reminded to check the GMA website regularly for updates.



Draft Budget 2023-24



You are invited to make a submission on Council's Draft Budget 2023-24

"Delivering the essentials, striving for more community-led action and responding to the climate emergency underpins the Draft Budget 2023-24.

It's been challenging to develop this budget in the current economic climate, however we're pleased it features a record \$36.4 million capital expenditure program, which will help foster a thriving, healthy, connected community."

Mayor Cr Liz Pattison



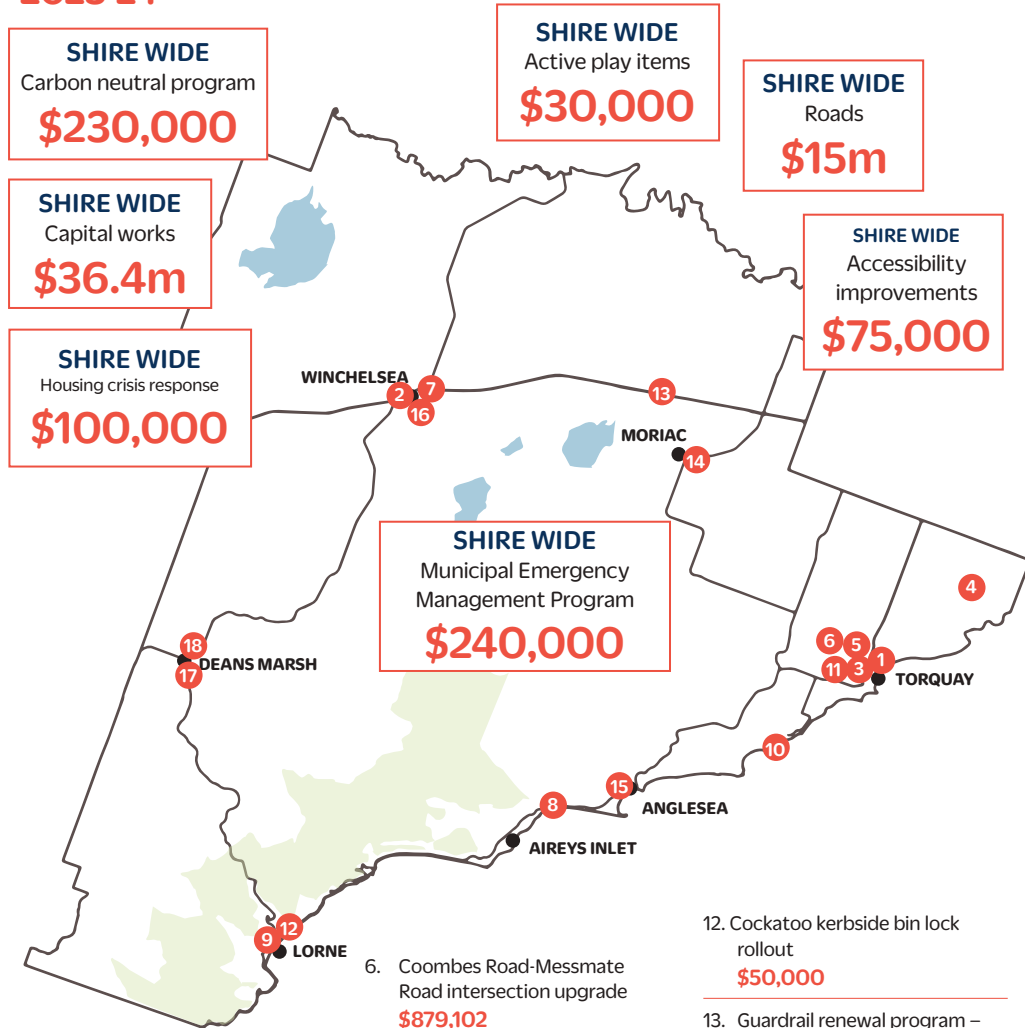
Proposed rate increase

The draft budget includes a proposed rate increase of 3.5% in line with the Victorian Government rate cap. Each property in the Surf Coast Shire is revalued every year by independent professional valuers. Movements in property values can result in rate increases different to 3.5% for individual ratepayers; however, across the shire, the average rate increase will be 3.5% - well below current inflation levels.

We understand many residents are experiencing financial pressures so if you are, please reach out to us regarding a rates payment plan.

Our friendly teams are ready and able to help.

A snapshot of projects and initiatives in the Draft Budget 2023-24



1. Surf Coast Aquatic and Health Centre
\$5,801,060
2. Winchelsea Swimming Pool renewal
\$4,580,000
3. Surf Coast Highway-Bristol Road intersection upgrade
\$2,665,814
4. Karaaf Wetlands improvement works
\$2,000,000
5. Construct pathways along Spring Creek and Deep Creek (Spring Creek pedestrian bridge and Ocean Views)
\$1,097,213

6. Coombes Road-Messmate Road intersection upgrade
\$879,102
7. Eastern Reserve netball courts renewal
\$318,000
8. Anglesea Ward road renewal (location subject to further investigation)
\$303,000
9. Stribling Reserve netball court renewal
\$162,000
10. Traditional Owner engagement and cultural values assessment – Urban Futures Strategy
\$80,000
11. Regional bike route along Great Ocean Road – Duffields Road to Strathmore Drive
\$66,275

12. Cockatoo kerbside bin lock rollout
\$50,000
13. Guardrail renewal program – two sections of Cape Otway Road
\$49,000
14. Moriac Structure Plan – planning scheme amendment implementation
\$45,000
15. Anglesea Art Space
\$33,300
16. Winchelsea Tree Planting Program
\$22,500
17. Bridge Renewal Program – Barrier Risk Assessments
\$4,500
18. Deans Marsh Recreation Reserve gate renewal
\$1,200



Immogen wins Gold, twice

Imogen wins dual Gold medals at the World Archery Oceania tournament



Winchelsea resident, Imogen Grzemeski travelled to Ashton, South Australia to compete in the Oceania tournament run by World Archery.

Oceania is geographical area associated with Australia, New Zealand, Micronesia and South Pacific countries. Having recently turned 21, Imogen was competing for the first time as part of the Women's Recurve Open Division.

The tournament had 2 gold medals up for grabs, the first for the highest score in the qualifying rounds (2 rounds of 72 arrows shot at 70 meters) and then matchplay with elimination down to the final 4 in the semifinals.

After the first round of 72 rounds, Imogen was shooting well, scoring a personal best and positioned in second place, 17 points behind the leader.

She then shot another personal best in the second round coming from behind to win the gold medal by 8 – an absolutely outstanding result, especially considering the rainy, windy conditions in the Adelaide Hills.

After a day's break, Imogen returned to the archery field to shoot the elimination matches and after some quick wins, ended up in the semifinal against another Aussie.

After a great match, Imogen prevailed and went on to the gold medal match the following day against Venessa Jim of New Zealand.

In a televised match watched by family, friends, and many of her colleagues at IGA-Winchelsea, Imogen beat Venessa 7 set points to 3, clinching her second gold medal for Australia.

Imogen is part of the archery development program at the Victorian Institute of Sport, where she trains 3 days a week and regularly attends camps at the Australian Institute of Sport in Canberra, where with fellow archers from around Australia.



admin@mirneeelectricalsolutions.com

Angus Leigh: 0484139858

'THE ELECTRICAL EXPERTS'

MIRNEE

ELECTRICAL SOLUTIONS

COMMERCIAL | DOMESTIC | INDUSTRIAL



COPACC

ACO Australian Chamber Orchestra

Wilfrid Gordon McDonald Partridge

An Australian Chamber Orchestra Production

Based on the book
by Mem Fox & Julie
Vivas Adapted for
the stage by
Sandra Eldridge
with original music
by Paul Stanhope.



Wednesday, 24 May 2023 | 10:30 AM & 12:00 PM

Tickets: \$20 | COPACC Member \$18

Tickets available online, at the Box Office and on 03 5232 2077.

SUBSCRIBE TO THE WINCHELSEA STAR NOW

EVERY EDITION ONLINE FREE

winchelseastar.org.au



Wightons Lawyers

Dispute Resolution & Litigation
Debt Collection
Property Law
Wills & Estates
Powers of Attorney
Business Law
Family Law
By appointment only

22 Willis Street, Winchelsea
ph. 5221 8777

www.wightons.com.au



5234 6585 0417 385 984
For all your septic tank, grease traps
and interceptor pits servicing.
Locally owned and operated



The Climate Report

Judy Cameron



Australian farmers are on the front lines of climate change, facing more severe and frequent drought, heatwaves, fires and floods. At the same time, the shift to a low-emissions world also presents farmers and rural communities with significant opportunities.

Farmers for Climate Action grew out of a meeting of frustrated farmers in the Blue Mountains in 2015. Many had spent decades voicing their concerns about climate change to no avail. They resolved to get to work. Their mission

is to influence Australia to adopt strong economy-wide climate policies and realise a prosperous and sustainable future, full of opportunity for farmers and farming communities.

The movement has launched a new report outlining the driving need for a national plan for climate change and agriculture and key policies that can support farmers to cut their emissions and increase farm productivity.

“An effective national policy on climate change and agriculture will allow us to ensure Australian farmers are prepared to deal with the changing climate and able to seize the economic opportunities that come from moving to a low carbon economy.”

The report ‘Farming Forever – a national plan for climate change and agriculture’ says climate change poses a serious and ongoing risk to the Australian agricultural sector’s viability which, in turn, impacts our long-term food security and the sustainability of regional communities.

Agriculture is the most vulnerable sector to climate impacts and projected productivity declines are likely to impact all subsectors.

Changes in seasonal conditions have already reduced farm profits by an average of 23% over the period 2001 to 2020.

We are all dependent upon a viable agriculture sector. Farmers produce more than 90% of the fresh food we consume in Australia and still manage to export around 70% per year.



When farmers experience climate-driven disasters on farms and along freight routes, consumers experience empty supermarket shelves and higher prices. Currently, a cohesive national plan to mitigate the negative impacts of climate change while improving resilience in agriculture to ensure farmers benefit from the shift to a zero carbon economy does not exist.

The agriculture sector has been leading Australia in reducing emissions since 1990.. Commodities are setting ambitious targets, including red meat’s carbon neutral 2030 (CN30) goal and pork is working towards net zero by 2025. Australian farmers have a unique role in the national movement towards net zero emissions as stewards managing more than half of Australia’s landmass.

This means Australian farmers will play host to the renewable energy developments, powerlines and associated infrastructure that will power our future energy grid. At the same time, these farms are uniquely exposed to the impacts of a changing climate. As these

changes become more apparent, their associated environmental, social and economic responsibilities are becoming increasingly difficult to navigate.

Future-proofing our farms can reduce national emissions and increase productivity across the agriculture sector. It can also position Australia as a renewable energy superpower, ensure food security and market accessibility, and unlock exciting new opportunities for Australia.

Farmers want to take action to reduce on-farm emissions but don’t know where to turn. The sector is looking to the leadership of the Federal Government to ensure opportunities aren’t missed and farmers are not left behind. This engagement forms the basis of our calls for a national climate change and agriculture roadmap, and it has informed the four key themes and our policy proposals

The full report with the key findings and recommendations at <https://farmersforclimateaction.org.au/farming-forever/>



Invitation

The 2023 Upper Barwon Landcare Dinner & Annual General Meeting

When Monday May 29th 2023

Where Winchelsea Hub, Eastern Reserve 70 Hopkins St Winchelsea

Program 6 PM – pre dinner drinks (*drinks available at bar prices*)

6.30 PM – Annual General Meeting

7 PM – Dinner (Fusion catering) with Guest Speaker between courses
(\$40 a head / pay on registration or by cash or card on the night)

Guest Speaker: Ray Draper



Growling Grass Frog

Frogs and Toadlets of the Corangamite Catchment

Ray Draper is a local environmental consultant who has a passion for frogs and toadlets that are indigenous to our region. Ray will talk about species we can expect to see in our area and will talk about threats to their habitat and how we can work to ensure their survival.

Bookings are essential and places are limited!

Please RSVP by the **23rd of May** with any dietary requirements to the Upper Barwon Landcare Network on 0407552663 or andrea.upperbarwonlandcare@gmail.com

COMMUNITY MEMBERS WELCOME

Volunteer landcarers finish planting a difficult site

Stewart Mathison



The weather forecast was for a cold morning with showers and possible hail but luckily that waited till the afternoon and the landcarers who turned up to start this year's planting enjoyed a lovely sunny morning last Saturday.

The site is very steep and volunteers were called for to go up the slope and

everybody was up for it so we started at the top and when the photo was taken the team had worked their way down to the bottom. Comment from some of the workers was that there was no need to bend your back as the job was right in front of you.

So some 300 plants supplied by Barwon Water from the Kui Nursery in Colac were put in to a difficult site where the

soil had been well moistened by recent rains. A further 1000 plants supplied by the shire will be planted at our working bees on the first Saturday of each month where anyone interested is welcome to assist and perhaps join us for a free coffee afterwards.

For further information contact Rod Stone 0428 549318 or Stewart Mathison 0428 672054



Winchelsea Land and Rivercare

First Saturday of the month.

9am – 10.30am June 3rd

Meet at Guye Reserve, Barwon Terrace

Murdoch Children's Foundation benefits from Gillin Boys Foundation donation

The Gillin Boys Foundation is set to make its most substantial donation in its three-year history to the Murdoch Children's Research Institute.

Scientists from the institute working on research into Duchenne Muscular Dystrophy will be in Warrnambool on Thursday 11 May, to speak about the developments made into the disease, made possible by philanthropic donations from individuals and organisations like the Gillin Boys Foundation.

"The foundation has made some substantial donations in the past, most recently a \$50,000 donation to the Murdoch Children's Research Institute late last year", Gillin Boys Co-founder Christopher Gillin said.

"However, we have never been in a position to make a such a substantial donation as we will present on the 11 May, which is really exciting for our family, and in particular the board of the Gillin Boys Foundation."



Up until February 2020 the Gillin Family raised over \$150,000 since 2016, which was shared between Save Our Sons Duchenne Foundation & Muscular Dystrophy Australia.

With the inception of the Gillin Boys Foundation in 2020, the organisation has managed to donate a further \$280,000 to assist with research and clinical trials.

"When my late brother Aaron and I decided to start raising money to find a cure for Muscular Dystrophy, we knew it wouldn't help us," Christopher said. "We also lost our cousins Ben and Zach to the disease and wanted part of our legacy to be helping give other families like ours a fighting chance to be treated for the disease, or better yet cured". He said.

Gillin Boys Foundation Chair Peter Headen said, the donation the foundation is about to make has been made possible by people living in the South West and across Australia, who have helped by hosting fundraisers, and have donated themselves to Chris and Aaron's plight.

"Without giving too much away, this donation is a three figure sum, and while the foundation has to opportunity to provide this amount to the Murdoch Children's Research Institute, it's because of the generosity of our supporters that it's possible."

"The more funds we raise, the quicker the cure."

Surf Coast Shire declares support for "Voice"

Council has declared its support for constitutional recognition through a Voice to Parliament.

At its 26 April meeting, the Council publicly supported a body enshrined in the Constitution that will enable Aboriginal and Torres Strait Islander peoples to provide advice to the Parliament on policies and projects that impact their lives.

Council also committed to sharing clear, unambiguous information with the community, enabling residents to make a considered and informed choice in the referendum.

"Our commitment to Reconciliation and self-determination, combined with community expectations, means it is important that Council takes a public stance in supporting The Voice. We believe this is a timely and just path to take," Mayor Cr Liz Pattison said.

"We will not, however, seek to influence how individuals choose to vote."

"The Voice to Parliament has arisen



from the Uluru Statement from the Heart, which is a letter to the Australian People from Aboriginal and Torres Strait Islander people. It calls for three main things: An Aboriginal and Torres Strait Islander Voice to Parliament enshrined in the Australian Constitution, Truth Telling and Makarrata or Treaty."

Mayor Pattison said the Voice to Parliament was not a political party policy.

"We're the only country that has yet to acknowledge its First Nations people in their Constitution," she said.

First Nations people have consistently called for self-determination, rather than symbolism, in representing and responding to their interests. The recent success of the Pilik Purriyn truth-telling event, presented in partnership with Wadawurrung Traditional Owners Aboriginal Corporation, was a great example of this approach.

Between October and December 2023, a referendum will be held in which Australians will vote on whether to update the Constitution to include an Aboriginal and Torres Strait Islander Voice to Parliament.

The Voice is a body that will:

- Provide independent advice to Parliament and Government.
- Be chosen by First Nations people based on the wishes of local communities.
- Be representative of Aboriginal and Torres Strait Islander communities.
- Be empowering, community-led, inclusive, respectful, culturally informed and gender balanced, and include youth.
- Be accountable and transparent.
- Work alongside existing organisations and traditional structures.

The Voice will not:

- Have program delivery function.
- Have veto powers.

Bridging the gap

Sarah Collier

Attracting and retaining skilled people to the dairy sector is crucial to maintaining the development of dairy manufacturer's engineering and other capabilities. Gardiner Foundation has taken a proactive approach to overcome this challenge by investing in the Monash University Industry Team Initiative (MITI).

The initiative places small multi-disciplinary teams of students with a dairy manufacturer to solve a specific company challenge over a 12-week period, during the university summer break.

When Jia Han Chew joined MITI in 2014, he didn't know the opportunities it would bring him. "The MITI program gives students work experience and exposure to challenges the dairy industry faces, while building interpersonal skills," Jia Han said. "It gives us the opportunity to build a professional network while still studying. Over the last few years, I've run into a lot of people I met through the MITI program and it helped accelerate the working relationship."

Now nine years later, he works as a Continuous Improvement Engineer at Bega in Tatura. He has a bachelor's degree and PhD in chemical engineering from Monash University, and during his MITI program he worked on improving the solubility of powder products.

MITI offers a unique opportunity for participating industry manufacturers to put forward a specific challenge in commercial confidence. Monash University and the manufacturer decide on a multi-disciplinary team of students at differing stages in their studies, who are embedded into the company and try to find a solution to this real world challenge. "Monash is more research focused and students often lack the industry experience. MITI was able to bridge the gap and offer students industry insights," Jia Han said.

His team completed their program at Murray Goulburn in Cobram. "We looked at modifying the raw ingredients, changing the amount of calcium and



homogenisation pressure," Jia Han said. "We found that we had success by modifying the drying condition. By changing the vibratory fluid bed operating conditions, we had some success in improving the solubility of the product."

His first job after finishing university was in Morwell, working for Lion Dairy and Drinks. "Moving from the city to the country took some adapting, but I love the country now," Jia Han said. "A lot of students are based in the city and wouldn't have thought of exploring the opportunities available in regional Victoria. MITI helps overcome the fear of the unknown and encourages students to explore what regional areas have to offer."

Jia Han was born and raised in Malaysia and studied part of his bachelor's

degree at Monash's Sunway campus and all of his PhD at the Clayton campus. "It's great that the MITI program is open to international students, because they struggle to get the same opportunities as domestic students," he said.

Since it began in 2014, over 200 students have been exposed to the dairy industry through the MITI program. These students have gained invaluable exposure to relevant learning opportunities that relate specifically to their studies while at the same time, acquiring hands-on practical experience.

For more information on the program, please visit www.gardinerfoundation.com.au/miti.

Winchelsea Star

Articles are most welcome and must carry the name and address of the sender.

Weekly deadline is 5pm Friday.

Copy for sports results and weekend events is Sunday 6pm (4pm for hard-copy articles/results left at IGA) unless by prior arrangement.

Copy should be emailed to news@winchelseastar.org.au or left at IGA Supermarket.

The Winchelsea Star reserves the right to edit or not publish any article.

Views expressed are not necessarily those of the Winchelsea Star or its Committee.

500 online subscribers, 250 copies printed for outlets around Winchelsea.

Free subscription to digital version at winchelseastar.org.au

© Winchelsea Star Org. Inc.
All rights reserved.

Winchelsea Star Organisation Inc.
Reg. No. A1479, ABN: 57 207 411 958
winchelseastar.org.au
Po Box 5, Winchelsea, Vic, 3241

Editors:

Cerrie Fogan, Yvonne Stevens
Judy Cameron
editor@winchelseastar.org.au

Advertising:

Sasha Gauntlett and Neil McInnes
advertising@winchelseastar.org.au
0408 102 802

Layout/Sub Editors:

Susan Corby, Stuart Fountain
production@winchelseastar.org.au

Committee

President: Mick O'Mara
president@winchelseastar.org.au

Treasurer: Cathy Cheadle
treasurer@winchelseastar.org.au

Secretary: Tony Phelps
secretary@winchelseastar.org.au

Committee Members:

Linda Carter

Printer: Mud Group
Website: Winch Websites



Government must take control of electricity planning infrastructure



The Victorian Farmers Federation (VFF) has called on the Victorian Government to step in and take over planning of the state's transmission network following the consultation on the proposed VNI West project.

VFF President Emma Germano said the Australian Energy Market Operator (AEMO) had failed to take the impact on agricultural production into account in planning for transmission on behalf of the Victorian Government, and that the government needs to take back control.

"Farmers have had a gutful over the disrespectful way in which these projects are being planned. AEMO is not up to the task of taking into account the impact of these projects on Victoria's food and fibre production. It is an unelected agency which seems to answer to no-one."

"Ultimately, the Victorian Government is

responsible for delivering this public infrastructure. The government should take full control of planning the shift to renewable energy across the state to ensure the impacts on agriculture and regional communities is understood and mitigated."

Ms Germano said planning for the VNI West and Western Renewables Link (WRL) projects should be paused, with government needing to undertake a state-wide plan.

"The VFF believes that an immediate halt to all planning for the VNI West and WRL projects must be undertaken. The powers for all transmission network planning must be vested in and executed directly by the Victorian Government. In addition, there must be a state-wide plan for renewable energy and transmission, that accounts for issues of agricultural production."





**2023
DANCE
ENROLMENTS
NOW OPEN!**

**Winchelsea dance
classes commence
1st February 2023**

REGISTER NOW

www.melsdancecentral.com.au

Pre-School - Adults
Beginner - Advanced Levels

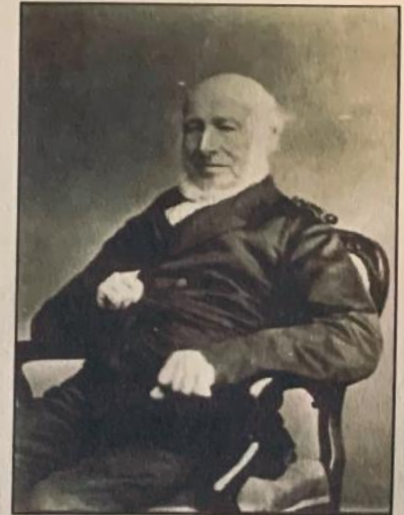
Winchelsea Street Names

Winchelsea Historical Society

Hopkins, Henry (1787 - 1870)

HOPKINS, HENRY (1787-1870), merchant and philanthropist, was born on 16 August 1787 at Deptford, England. His mother was Mary, née A'Gutta, of Flemish descent. He was brought up in a pious Nonconformist middle class home and had a sound business training, spending '16 years in the wool trade in England'. He married his cousin Sarah Rout, daughter of Margaret A'Gutta, and sailed with her from Deptford in the *Heroine*. Among the passengers were Robert Mather and his wife and family, and George and Martha Clarke. On 10 September 1822 they arrived at Hobart Town, where Mather and Hopkins became partners, and as retailers and buyers of produce opened a small shop in Elizabeth Street. As Hobart's first wool buyer, Hopkins was credited with the entire export of the colony in 1822: twelve bales of wool bought at 4d. a pound, and sold in London at 7d.

The partnership with Mather was short-lived. Hopkins moved to his own shop and cottage, 'two rooms and a skilling', at the corner of Elizabeth and Bathurst Streets. His main stock was ironmongery, but he was keenly interested in developing the wool trade. On 28 December 1825 he applied for a land grant, offering as qualifications his long experience in the wool trade and a capital of £2000. The application failed because he would not accept the required residence conditions, but as a townsman and trader he rapidly prospered. In 1835 he built Westella, the great square stone house which still stands in Elizabeth Street, a landmark from which, in the absence of a Town Hall, were proclaimed the governor's orders on King William's death, Queen Victoria's accession, the birth of Edward Prince of Wales, and later the cessation of transportation. Hopkins also acquired other properties and in 1839 he put up for sale ten houses in Hobart, a farm and numerous town allotments. In 1837 he had visited the Port Phillip District to buy land and wool. He bought Wormbete, near Winchelsea, and stocked it with merinos from Van Diemen's Land. Later he made it over to his second son, John Rout, and acquired another Victorian property at Lake Murdeduke, for his third son, Arthur.



Henry Hopkins (1787 - 1870), by unknown photographer, 1860s, courtesy of Allport Library and Museum of Fine Arts, State Library of Tasmania. AUTAS001125882662. Image Details

Plasterer & Painter

Daryl Hecker

Domestic & Commercial
Renovations & Repairs
Suspended Ceilings
Dustless Sanding
New Homes
Extensions



Ph 0419 194 799

Winchelsea Men's Shed



For The Community

51 Hesse Street

Every Wednesday from 9:30am

New members always welcome

For more detail contact:
Ray Atkinson (Co-ordinator)
0407 839 139

or
winchmensed@gmail.com

Need a job done?
Woodworking jobs,
furniture repairs, small jobs.
Drop in and talk to us.



Winchelsea
Supermarket

Trading Hours

Monday to Saturday

8.30am to 7.30pm

Sunday

10am to 7pm

Ph: 5267 2676

29 Main St, Winchelsea

MRP Steelworx

@Matthew Partridge C
 @0418672634C
 @enrpsteelworx@yahoo.com.au

Welding Service

- Onsite welding
- Farm maintenance
- Farm machinery & equipment repairs
- Cattle & sheep yards
- Custom built trailers
- Supply & install gates

NO MATTER WHAT YOUR PROBLEM, DODDS ELECTRIX CAN DEFUSE THE SITUATION.

RURAL, INDUSTRIAL, COMMERCIAL. DOMESTIC
 PHONE 0438 887 360
 EMAIL: DODDSY@FASTMAIL.FM
 PO BOX 36 BIRREGURRA, VICTORIA 324
 REC: 17520 ABN: 64 581 250 880



5234 6585 0417 385 984
 For all your domestic & stock water.
 Also available for road and civil construction
 Local owned and operated.

OZ TREES NURSERY & TREE PLANTING SERVICES

- Affordable seedlings—over 200 species
 - Complete plantation service—farm forestry, shelter, aesthetics
 - Deep ripping & mound ploughing. Rotary bed forming
 - Our experienced staff will help you select species for your site conditions and needs
- Also available—tree planting tools, milk cartons, plastic tree guards & bamboo stakes



569 Warrowie Rd. Colac
 P: 5233 6280 F: 5233 6393
 E: info@oztrees.com.au
 W: www.oztrees.com.au
 Open Monday—Friday
 9am—4:30pm

Phone OzTrees for professional advice,

TRENCHES & HOLES PTY LTD.



PHILLIP ROBERTSON
 ☎ **0427 672 945**
WINCHELSEA

- General Earth Works
- Driveways
- Trencher
- Kanga Loader
- Grader
- Excavator Work (3.5 & 6.5 Tonne)
- Tip Truck
- Rock Breaker
- Post Holes & Shed Footings

A.B.N 74006896898

WINCH WEBSITES
 WEB SOLUTIONS SIMPLIFIED.

WEBSITES

GROW business
INCREASE reach
SAVE time



Find out what a website could do for you
winchwebsites.com.au
04 887766 20

CONCRETER

Alister Aitken

No job to big or small

- Driveways - Carports - Crossovers - Footpaths - Sheds Slabs - Colored Concrete - Concrete sealing - Exposed Aggregate - & more -

Call or text for a no obligation free quote

Servicing our local Winchelsea & Surrounding Areas

alaitken.aa@gmail.com or Alister - 0411 871 950

A.B.N 47 228 574 460

Knuckey's Winchelsea

Ph: 5267 2011

Knuckey's have a complete range of batteries to suit tractor, heavy machinery, cars, utes

The largest range of the best oil for your vehicles—**CASTROL**—*'when only the best will do'*

The largest range of V belts. A, B, C, D M Sections
 Bolts and nuts for all occasions
 Steel cut to size



Winchelsea Football Netball Club Inc

Blues News

Janet Fletcher

WELCOME TO BLUE'S NEWS:

Sunday 30th April Winchelsea Blues hosted Inverleigh Hawks in beautiful conditions at Eastern Reserve. A huge grassroots football crowd witnessed the following games.

RESERVES:

Winchelsea Blues 3.5.23 were def by Inverleigh Hawks 10.9.69

The Reserves were never really in the game after the first quarter - a hard week of training ensured!

GOALS:

Bailey Forssman 1, Jarod Winzer 1, Zedakai Copland 1.

BEST:

Bailey Forssman, Rory Elliott, Will McNeil, Dougal Robb, Shaun Morris, Declan Chibnall

SENIORS:

Winchelsea Blues 9.16.70 defeated Inverleigh Hawks 8.10.58.

The Blues lead all day until the Hawks drew level in the last quarter. The game was up for grabs – and to the Blues credit they surged away to take the 4 points.

Song was sung loud and proud !!!

GOALS:

Jordan Gould 3, Tavae Saunie 2 being the major goal kickers.

BEST:

Brendan Rees, Aaron Walsh, Luke Henry, Lachie Kendall, Finlay Parish, Tom Stephenson.

Last Saturday the Blues travelled to East Geelong to play the ladder leaders, East yet having to drop a game. Extremely cold conditions had been forecast and predictions were proven correct, it was seriously cold !

RESERVES:

Winchelsea 3.4.22 were defeated by East Geelong 5.8.38

East Geelong Reserves have only dropped a hand full of games in the past

2 years so when the Blues were just a point down at quarter time there was an up and about within the Blue's huddle.

The second quarter was telling for the match with the Eagles just doing enough in a low scoring game to make it difficult for the Blues to get across the line with 4 points. Clearly the benchmark in the Reserves competition the East Geelong Eagles were pushed by the Blues and our Reserves can come away with plenty of more to come.

GOALS:

Jackson Timms, Rory Elliott, Haydaen Wilson all 1 goal.

BEST:

Damian Tabakovic, Declan Chibnall, Baxter Boddington, Bailey Forssman, Dougal Robb, Jackson Timms.

SENIORS:

Winchelsea Blues 8.3.51 were defeated by East Geelong Eagles 14.16.100

East had a raging wind in the first quarter which helped hold the Blues to scoring a miserly 2 points.

By the second quarter the wind had completely disappeared so any advantage in the second had gone. Having that aside the Blues had plenty of chances to develop on the score board but couldn't convert to their advantage, East have clearly got a well developed game plan which the Blues just couldn't crack on the day. Plenty of food for thought next time round.

GOALS:

Tavae Sauni 3, Jordan Gould, Lachie Kendall, Zedakai Copland, and Fin Parish all 1 goal.

BEST:

Luke Henry, Michael Bourdouvalis, Brenton Rees, Jonty Scott, Tavae Sauni, Lacklan Kendall.

This Saturday the W.F.N.C. host Geelong West Giants at Easter Reserve at the usual starting times.

JUNIOR FOOTBALL:

Winchelsea Auskick and the Under 10 Football side were treated by a visit from leading Geelong Cats player Tom Hawkins, who from all accounts showed great patience with children and adults alike. Training is again at the usual time of 5 -6pm Thursday night.

There was great excitement last Saturday morning when the Under 10's kicked their first couple of goals for the season – great work Team! Improving every week.

THE BLUE'S BISTRO:

Well what a night ! Many thanks to all those who continue to support your Football & Netball Club on a Thursday night. The Club's Catering Team can take a bow, these Volunteers are second to none and they love to see everyone out and about at Eastern Reserve on a Thursday evening.

Again thank you all for your patience the line was almost out the door !!

Special mention to local Farmer Brendan Kelly who celebrated his 60th Birthday last Thursday and because the Volunteers were short he chose not to be out celebrating but stuck at being the 'King of the Kitchen' with us on such a busy night. Thanks Brendan !

The Menu for this week is Flat head Tails, Porcupine Balls, Chicken Schnitzel / Parma /all served with either salad & chips or vegetables

For the Junior Blues Chips, nuggets and gravy all for \$5.00

Dessert to be announced, always ice cream & strawberry/ caramel/ chocolate topping \$2.00

Please note: Take away meals are available from the above menu.

GO BLUES!!



**Growing Winchelsea Inc.
General Member's and Community
gathering meeting.**

**7pm, Wednesday 10th May 2023
Shire Hall**

**Come and hear how the Community Action Plan
is taking shape, receive updates on the Mud Hut
design, Station Precinct Project, Movie Club and
IGA plans.**

All Welcome, Join up on the Night.

Light Refreshments Provided.



**Louise Hall
Secretary, Growing Winchelsea Inc.**

Conquer the Corrugations

May 27-28 2023

Life is tough and it can get bumpy ... but when we come together it smooths out the path and the hills become a little less steep.

Join us on our first walk to raise awareness and support those affected by mental health.

Winchelsea to Inverleigh and return with an optional overnight camp.

Bus transport available, so join us for any stage of the event.

Register online and get more info through our Facebook page: [conquerthecorrugations-vic](#) OR the Lifeline website.

Free event open to all ages and abilities.

A fun free weekend with a powerful message.

52672192 R & K Creative Framing
for all your framing needs

free quotes
pension discount
specialist in Age & Disability Modifications

Ray & Kim Jansen
10 Witcombe st
Winchelsea 3241
0414672192

Ray The Home
Maintenance HANDYMAN
abn 47928823462



**HESSE
RURAL
HEALTH**

Volunteers Required

- Bus Driver & Outings Assistant
- Resident Visitor
- Events and Activities Assistant
- Group Wheelchair Walks Assistant
- Appointments Escort
- Social Support Activities
- Gardening - Winchelsea

Volunteers are essential to our aged care system, supporting the wellbeing of older people in their homes and in residential settings





For more information please contact Jessica Culhane, Communications and Community Partnership Officer via phone on [\(03\) 5267 1200](tel:03152671200) or via email jculhane@hesse.vic.gov.au

Antique Repairs

By Doug Burns est. 1976

- All Furniture
- French polishing
- Carving
- Veneering
- Wood Turning
- Porcelain



Unusual Requests Welcome

180 Barwon Terrace, Winchelsea

0428 672 704

The Winchelsea Community Plan aims to gather all the ideas, thoughts, suggestions, negatives & positives about living in Winchelsea - and how we can help direct its development and growth.

The project working group is asking for YOUR contribution through a couple of surveys, one for businesses and one for non-profits/community groups.

Have you done yours?

This is a genuine opportunity to put together a prioritised list of what the Winchelsea community actually wants for itself. "What for?", you ask? So that items on the list can then be worked on by groups of passionate locals to set



WINCHELSEA ONLINE

about making them happen. The Community Plan is a ground-up action plan built by the community for its own benefit. It's NOT a shopping list or To Do list for government - it's a list for locals to get done, however is best.

So if you feel you can speak for your organisation (which has been listed in the Winchelsea Online local directory), please take 10 minutes to fill in the appropriate survey to add your voice.

Businesses - communityplan.surveys.so/winchelsea-business

Non-profits & community groups - communityplan.surveys.so/winchelsea-nonprofits

Hoping you can help with this project, and thankyou in advance

Winchelsea Directory - 3241 postcode winchelsea.online

VICTORIA 27TH - 28TH MAY 2023

Conquer the Corrugations strives to raise awareness of the 'corrugations' in life, support and remember those affected and to remove the stigma that surrounds mental health.

Barwon River to Inverleigh

Walk one way or both (1 day or 2)

A not for profit family friendly, free community event

Supported by RFDS Mental Health Services Team & Lifeline

In support of those affected, In honour of loved ones lost, We walk as one.

Event Overview

The Victoria 2023 Conquer the Corrugations event aims to support those who have lost a loved one whilst raising awareness and striving for prevention. A not-for-profit event where people are encouraged to come together as a community to support one another.

The walk will commence at Winchelsea free camp site and participants will walk from here to Inverleigh (17km) with the option to participate in a 1 or 2 day event (walk one way or both). The Inverleigh camp site will be utilised for those that wish to camp overnight.

Toilet and water facilities as well as a support bus service will operate for the duration of the walk. Rest stops (morning tea and lunch) will also be provided.

A family-friendly event open to everyone of all ages and abilities. Through the generous support of local businesses, we offer this as a free event.

Life is tough and it can get bumpy... but when we come together it smooths out the path and the hills become a little less steep.

ITINERARY	
SATURDAY 27TH MAY	<ul style="list-style-type: none"> • Meet at Winchelsea free camp site @ 8am (registration & merchandise collection) • Walk to commence by 9am • Rest stops provided for morning tea & lunch • Support services provided—passenger bus, water, toilet & first aid facilities • Walk finishes at the Inverleigh Hotel (17km walk) • Setup camp at the Inverleigh camp site (optional) • Lifeline & RFDS Mental Health Team workshops (participation optional) • Dinner: Lions Club set up at Inverleigh camp site to provide meals (donation) or alternatively meals can be purchased from the Inverleigh Hotel • Entertainment
SUNDAY 28TH MAY	<ul style="list-style-type: none"> • Breakfast: Lions Club set up at camp site to provide meals (donation) • Walk to commence by 9am with same support services as Day 1 • Walk finishes back at Winchelsea free camp

For more information scan the QR code below

www.conquerthecorrugations.com.au

www.facebook.com/conquerthecorrugations

conquerthecorrugations@gmail.com

Never let a stumble in the road be the end of a journey

B & H Modifications Bob Verity

55 Stephenson Road
Winchelsea 3241
Ph: 5267 2467
Mobile: 0411 610 678

Industrial Sewing Machine Work

Caravan Annexes, Trailer Covers,
Shade Sails, Alterations and
Repairs to
Camping and Tents.
Clear PVC Blinds
Repairs to CLEAN Horse Rugs
No Job Too Small
Email: bobverity@southernphone.com.au

AFS BOOKKEEPING

"Your local bookkeeper"

Bookkeeping
Administration
Payroll
BAS Services
Xero / Myob
Reckon / Quickbooks
Registered BAS Agent

Angelique Snetselaar

0456 077 485

info@afsbookkeeping.com.au
www.afsbookkeeping.com.au

Winchelsea Churches



Winchelsea Uniting Church

Hesse St, Winchelsea 3241
uca.winchelsea@gmail.com
0475 777 301
Services 9.30am Sundays

St John's Catholic Church

May Mass times: 5pm.
May 6, 13, 20, 27
Harding St, Winchelsea 3241
Father Joseph Panackal
0404598558

St Thomas' Anglican Church

Barwon Tce, Winchelsea
Rev'd A. Lynne Clarke
stthomaswac@gmail.com
0477 672 042



Thought for the Week

"When you find it hard to pray
surrender to the emptiness or,
rather, to God just beyond it.

God is close to the
brokenhearted."

John Bader,
Accredited Lay Preacher

St John's Catholic Church

During Autumn and Winter, Mass will be celebrated at 5pm on Saturday evenings at St John the Baptist Church, corner Mercer and Austin Streets, Winchelsea.

Adoration, Benediction and Reconciliation take place at 4pm followed by Mass at 5pm on the first Saturday of each month. (Next: 6 May)

Mass also takes place at Hesse Rural Health Service at 2pm on the fourth Thursday of each month. (Next: 27 April)

Parents wishing to have their child Baptised, please contact Anita 0409 432 833. Children can be Baptised at St John's Winchelsea.

Reconciliation/Anointing takes place before or after Mass. If you would like Mass offered for your loved ones, please let Father Joseph know on 52 681 230.

Father Joseph can be contacted on 52 681 230 or 0404 598 558 for a chat. The Parish Office is open 9.30 am - 4.30pm Wednesdays and Fridays.



St Vincent de Paul Society
good works

Covering Meredith, Bannockburn,
Anakie, Lethbridge, Inverleigh,
Teesdale, Shelford,
Elaine and Winchelsea

52219170

Monday - Friday 9am to 2 pm

<http://www.vinnies.org.au>

A caring Catholic
organisation offering
"a hand up" to all people
in need.

Winchelsea Hospital Auxiliary Op Shop

DONATIONS

We are now accepting donations

Donation days

Sat 10 - 2. Mon 10 - 2.

SALES

\$5 bag of books.
Half price DVD's and CD's.
\$1 per item on selected clothing.

OP SHOP HOURS

Friday to Monday 10am to 3pm.

**IF THE FLAGS ARE OUT
WE ARE OPEN**



mainly music
est. 1990

Fun, Interactive music sessions for
pre-school children (0-4 y.o.) and
parents/caregivers

When: Mondays from 10 to 11 am
(runs during school terms)

Where: St Thomas' Hall

25 Barwon Tce.

To Enquire ring: 0407838256

Women's Workshop

Wednesdays 2:00 to 4:30pm.

Learn practical home
maintenance skills.

Learn basic woodworking
design & construction
techniques and hand tool use.

Discuss your ideas/needs with us.

SMS Stuart - 0468 358 282 at the
Winchelsea Men's Shed

email: winchmenshed@gmail.com

How our volunteer firefighters are being treated

Bureaucracy gets millions while emergency experts sidelined

Cathy Cheadle

CEO of Volunteer Fire Brigades Victoria (VFBV), Adam Barnett, wrote an editorial in their May newsletter recently. He explains how the Victorian government has sneakily changed the management of emergency services.

An initiative called the Volunteer Consultative Forum (VCF) commenced in November 2013. It enabled the Victoria Minister for Emergency Services to consult with representatives from the CFA, SES, Life Saving Victoria, Australian Red Cross, Ambulance Victoria, VFBV, St John Ambulance, Volunteer Coast Guard, Salvation Army, VICSESVA and the Victorian Council of Churches Emergencies Ministry.

Following a change in government in 2014, the new Minister, the Hon Jane Garrett MP, acknowledged that involvement with the VCF would continue to be a priority under the Andrews Government.

On 4 May 2016, Premier Andrews, Minister Garrett, and the Emergency Management Commissioner signed the Emergency Management Volunteer Statement that committed the State of Victoria to consult with emergency management volunteers on matters that affect them.

At a recent meeting of the VCF, the Emergency Management Commissioner made a surprise announcement that the VCF would be disbanded.

No prior consultation was made.

The decision had taken place after a secret briefing and recommendation was

given to the Minister by the Emergency Management Commissioner on behalf of Emergency Management Victoria (EMV).

EMV commenced operation on 1 July 2014 and consisted of a small, dedicated team of less than 12 people who formed the Fire Services Commissioner's Office.

EMV has since morphed into a bureaucracy of several hundred, with its own CEO, Commissioner, Deputy Commissioners and countless executive directors, public servants, consultants and advisors.

The 13 strategic priority actions developed by volunteers through the VCF back in 2015 have been quietly erased from EMV's strategic action plan over subsequent years.

A recent EMV Operating Model review advocates for more public sector full-time personnel to be employed to form full-time Incident Management Teams managed by EMV.

It even proposed a business case to train 500 public servants to form a new Emergency Management Corps.

There is no recommendation to recruit, retain and encourage another 500 volunteers.

Last year's State Budget included a record \$36.2 million for the establishment of EMV's new full-time State Control Centre workforce.

This is not a new capability, it simply replaces the current workforce contributed to by each of the agencies

through existing surge capacity.

\$36.2 million could have bought 80 brand new fire trucks.

Meanwhile, the CFA is suffering from decades of underinvestment, with ageing trucks, stations and hundreds of personnel transferred out of the CFA under recent reforms.

The disbanding of the VCF shows the Victorian government's total disdain for the emergency volunteers who make up more than 90% of the workforce.

The critical work that emergency volunteer first-responders do each and every day to keep our communities safe is being undermined in favour of building up the behemoth of bureaucracy that is the EMV.

Instead of supporting and encouraging the volunteer sector which eases the burden on the State Budget, the Victorian government wants to waste more taxpayer dollars in favour of building bigger inefficient and ineffective bureaucracies.

The Emergency Management Volunteer Statement was a public statement of commitment signed by the Premier himself on behalf of the whole Victorian government.

A commitment that the Victorian government has dishonoured while it has betrayed our emergency volunteers.

For the full editorial, go to www.vfbv.com.au ... News ... Recent News ... May 2023 Newsletter

direct
TEMPORARY FENCING
FOR HIRE - SUPPLIED & ERECTED - 7 DAYS
GEELONG - BELLARINE - COLAC - SURF COA
PHONE CAM 0417 310 800

DownRyte Excavations

- Excavations
- Drilling and Piling
- Rock Placement
- Tree and Stump Removal

Sean Hunwick
Mobile: 0409 447 288
Email: downryte@activ8.net.au

Kyeema
Rural Fencing Pty. Ltd.
Jason Armstrong & Jay Hawker
1080 Prices Lane, Ombersley, Victoria, 3241
0419 565085 (Jason)
0416 585817 (Jay)
kyeemafarm@kyeemafarm.com.au
Also incorporating domestic and rural tree trimming services.

Payment reforms called for by National Seniors

The latest ABS Living Cost Indexes show pensioners and other government payment recipients are hit the hardest by rising cost of living pressures.

Pensioner living costs increased by 2.2% in the March quarter compared to only 1.4% for overall CPI - ABS Living Cost Index. National Seniors Australia Chief Operating Officer Chris Grice said the latest quarterly figures reveal a worrying increase with pensioner and age pensioner households recording the largest rise at 2.2%. Households receiving other government payments recorded a rise of 2.1%. “

The impact of cost of living expenses for pensioners reinforces the need for the Age Pension to be indexed more frequently during times of high inflation to ensure payments better reflect living costs,” Mr Grice said.

“Under the current system, pensions are adjusted every six months, in March and September. This leaves recipients playing a game of catch up when inflation is unusually high.”

Mr Grice said the federal government should index the pension more frequently during times of high inflation to help those most vulnerable.



Winchelsea Community House Inc. A6247K

28 Hesse Street, PO BOX 75, WINCHELSEA, Vic. 3241

Phone: (03) 5267 2028

Email: reception@winchhouse.org.au

ABN: 48 932 340 254

WINCHELSEA HIGH TEA Help to support your local Community House!

**SATURDAY 13TH MAY, 2023
2PM-4PM**

WINCHELSEA SHIRE HALL

**COST \$60
(includes a glass of bubbles or orange juice,
savouries, sweets and scones)**

Bookings now open via Eventbrite

<https://winchelseahightea.eventbrite.com.au>



MARKET dates for 2023

1 st January	2 nd July
5 th February	6 th August
5 th March	3 rd September
2 nd April	8 th October
7 th May	5 th November
4 th June	3 rd December

WINCHELSEA CONCRETING

· Driveways · Sheds · Decorative Concrete · Raft Slabs

Robert Murphy

☎ 0438 235 237

✉ winchelseaconcreting@outlook.com



Winchelsea Community House Inc.

A6247K ABN: 48 932 340 254

A 28 Hesse Street, Winchelsea, Vic. 3241

P (03) 5267 2028

E manager@winchhouse.org.au

Winchelsea High Tea

Winchelsea High Tea

Help support your local Community House!

When: Sat 13 May 2023 2-4pm

Winchelsea Shire Hall Space

\$60 per person

Includes a glass of bubbles or orange juice, savouries, sweets and scones

Bookings now open via Eventbrite winchelseahightea.eventbrite.com.au

Singing Group

When: Wednesday afternoons 4.45pm-5.45pm

Winchelsea Shire Hall Space

\$5 per session Under 16 Free

Commencing: Wed 26th April, 2023

Bookings now open via email to reception@winchhouse.org.au

Experienced Tai Chi

When: Friday mornings 9.30am-10.30am

Winchelsea Community House Space

\$90 for 9 week term program

Commencing Fri 28th April, 2023

Bookings now open via email to reception@winchhouse.org.au

Knitting Group

Come along and learn to knit or bring your knitting project and come and chat with others.

When: Thursday mornings 10am-12 noon

Winchelsea Community House

Commencing: Thurs 27th April, 2023

WYLD Youth Group

More information coming early in Term 2!

Crochet Group

When: Alternate Sat afternoons 1.30pm

Winchelsea Community House Space

\$5 per session

Commencing: Sat 22nd April, 2023

Art Classes

Creative Drawing

When: Tuesdays 2 May– 20 June 1-3pm

Winchelsea Shire Hall Space

Term 2, 8 classes \$440

Payment in Full Required

*Missed classes can be claimed toward Term 3 or refunded provided 24 hrs notice given in advance.

Painting

When: Thursdays 27 April– 22 June 1-3pm

Winchelsea Shire Hall Space

Term 2, 9 classes \$585

All materials included.

Media: including ink, charcoal, conte, pencils and pastels, technical drawing instructions, relax through an explorative and enjoyable approach.

Suits all levels of experience and abilities.

Technically informative, providing skills, individuals progress in preferred direction.

Bookings and enquiries email Hinterlandartschool@gmail.com
PH: 0493 479 447

Yoga Flow Classes

When: Every Thurs evening in May 7-8pm

Winchelsea Shire Hall Space

\$22 per class or \$80 for 4 classes

BYO Yoga Mat

Bookings essential

Text or call Alex on 0400930495

Sound Healing Sessions

When: Wed 19 April, Wed 17 May,

Wed 14 June, 2023 7.30-8.30pm

Winchelsea Shire Hall Space

\$40 per session

Please call Vicki on 0400 149 749

Yoga Flow, Chai & Treats

When: Sun 7 May 4pm.

Winchelsea Shire Hall Space

\$29 per person

BYO Yoga Mat

Bookings essential– Text or Call Alex on 0400930495

Big Ideas

When: Fri 21 April, Fri 19 May, Fri 16 June

Winchelsea Shire Hall Space

Donation

Big and small ideas discussed over a bowl of soup in the Shire Hall kitchen.

Contact Richard Butcher richard@studiobutcher.com

Chatty Cafe

When: Fri mornings 10-12 noon

Winchelsea Shire Hall Space

Coffee for sale \$3

No Bookings required

We will have our Chatty Café Volunteers present to welcome you! A place to sit, relax and chat. Chatting is such a simple concept but so important for mental and physical health.



All About **Mowers & Chainsaws**
 Repairs to all makes and models of ride on mowers, domestic mowers, pumps, chainsaws, brushcutters and small engines.
 Trading Hours: Mon - Fri 8am - 5pm Saturday 8am - 12 noon
5267 2266 Cnr Princes Hwy & Lennox St Winchelsea
 www.allaboutmowers.com.au
 accounts@allaboutmowers.com.au

FERRIS CDX STIHL BRIGGS & STRATTON VICTA

Simco Plumbing and Gasfitting
 24/7 Emergency service Ph:0400643976

- All General Plumbing and Gasfitting
- Roof and Gutters, Hot Water service changeover
- Split Systems, Air Conditioning and Wood Heaters
- Irrigation, Septic and Treatment plants
- Excavation, Bobcat and Tipper
- Rain water Tank installation
- Renovations and Extensions
- Gas conversions and servicing

Simon McGillivray
 Lic: I09610. Free quotes, Fast and friendly service

Water Delivery
WAZZA'S WATER CARTAGE
 Stainless Tanker Up to 22,000 ltr loads
 Barwon Water Registered
Domestic & Rural Water Supplies

Call Wazza
 Mob: 0428 877 260
 Email: wazza@wazzas.com.au Web: wazzaswater.com


Scott McDonald
0423 413 829

S.J.R AUTOMOTIVE
 A&B 842 A&B 846 848 849
 13 ALSOP DRIVE, WINCHELSEA VIC 3841

SOUTHERN GRAIN STORAGE PTY. LTD.
 AG SUPPLIES FERTILISER GRAIN STORAGE SEED CLEANING
(03) 5267 2351

STS ACCOUNTING GROUP
Your Taxation & Superannuation Specialists.
 Winchelsea
5267 2673
 www.surftax.com.au

DAVIC AG
CONTRACTING AND EARTHMOVING
 For all your harvesting needs
 Mowing, raking, round bailing, paddock prepping, spreading and sowing
 Call Dave on **0417 579 973** Bambra

 **Café La Hoot**
 have you tried 'owl' coffee?
 1 willis st cafelahooot@gmail.com 0407 528 999



CONGRATULATIONS JOHN AND BERYL READ

Celebrating their 60th wedding anniversary on 11 May. Congratulations on your achievement Love Russell and Nicole, Mary and Tim, Margaret and Belinda, 14 grand children and 13 great grand children. A lot of treasured memories.

Linda Carter

ENGAGEMENT CONGRATULATIONS

HASSELL & PARISH

Wayne & Jane from Dunkeld with Tim & Mary from Bambra are happy to announce the engagement of Chloe & James

May they have years of treasured memories !!



Victorian Community Pest Management Group Volunteers Receive Australian Biosecurity

Victoria's four Community Pest Management Groups (CPMGs) have been chosen to receive the Australian Biosecurity Award (ABA) in Canberra recently. The ABA's recognise individuals, groups and organisations that have shown commitment to supporting and promoting Australian biosecurity and the systems that underpin it.

The CPMGs were nominated by AgVic to receive an award under the community category for their role in the Weeds and Rabbits Project.

The CPMGs include the Victorian Blackberry Taskforce, the Victorian Gorse Taskforce, Victorian Rabbit Action Network and Victorian Serrated Tussock Working Party who formed part of the Delivery Leadership Group, the

project steering committee for the Weeds and Rabbit Project.

CPMGs consist of volunteer community representatives, and contractors, who provide education, engagement and extension services to landowners affected by invasive species.

The project attracted 4.3 million dollars and was a collaborative partnership between AgVic and the CPMGs. The project was a biosecurity initiative aimed at improving the way established pest animals and weeds are managed in Victoria. The collaborative project model placed community at the table to guide investment decision making,



critical for supporting community-led action on weeds and rabbits.

Invasive species cause substantial amounts of economic and environmental damage across Australia, with an annual economic cost alone at \$24.5 billion per year.

Services and Activities in Winchelsea

Free Community Service Advertisements



TRAIN SERVICES

To Geelong

Mon - Fri

6:41 am, 7:59am, 11:34am,
2:01pm, 7:37pm

Sat and Sun

9:35am, 1:36pm, 7:18pm

To Warrnambool:

Mon - Fri

9:29am, 2:56pm, (to Colac
5:27pm), 6:45pm, 8:53pm

Sat and Sun

8:47am, 2:49pm, 8:37pm

Country Women's Association



7pm Second Wednesday of Month
Winchelsea Senior Citizens' Hall

Bus to the Hub

For reservations on the weekly bus
to the Eastern Reserve Hub,
please phone 52671202.

Surf Coast Mobile Library

Surf Coast Mobile Library
parked in Hesse Street
(outside Shire Hall) on Fridays
between 2:00 and 5:00pm
unless it is a Public Holiday.
Hesse St, Fridays, 2pm-5pm

Winchelsea Taxi

0429 672 888 or

5267 2888

Wheelchair accessible
10 seater bus available.

Winchelsea SES

Meeting and training
2nd Wednesday

Training 4th Wednesday

Visitors and inquiries welcome

0408 102 802



Winchelsea and District

Combined Probus Club

Meets 1st Monday of the month
at 10am. Senior Citizens Rooms,
Harding St, Winchelsea.

New members always welcome.

Enquiries Linda 0439 817 263.

Winchelsea Playgroup

Every second Thursday 10am-12pm
St Thomas Anglican Church Hall
cnr Barwon Tce and Hopkins St, Winchelsea
Contact: Melissa 0456181268
Facebook - Winchelsea Playgroup 2019

New families welcome

Winchelsea Girl Guides

Our Unit meets at the Catholic Church
Hall, Harding St Winchelsea
each Monday 4.30pm-6pm

All girls 5yrs- 15yrs Welcome!

Contact Yvonne Orchard 0448 672 630
or Bonnie Stokes 0401 386 274

1st Modewarre and Winchelsea Scout Group

Joey's: Tuesdays of school term 5-6pm

Cubs: Mondays of school term 6:30-8pm

Scouts: Tuesdays of school term
6:30-8:30pm

All at Modewarre Hall, Cape Otway Rd

Venturers: Wed at Walton's Rd Venturer Den

Contact Marie McPadden 0409 330147

Winchelsea Transfer Station

Opening Hours

Monday	Closed
Tuesday	2pm-4pm
Wednesday	Closed
Thursday	2pm - 4pm
Friday	Closed
Saturday	1.30pm - 3.30pm
Sunday	9.30am - 12.30pm

55 Cressy Road, Winchelsea.

Accepts household garbage,
mixed commercial and industrial waste,
mixed construction and demolition
waste. Accepts recyclable materials.
Accepts one recycle bin two waste bins.
Does NOT accept clean fill.

Gnarwarre Fire Brigade members delighted to receive new tanker

Adrian Schonfelder MP

Gnarwarre Fire Brigade was delighted to have its new medium tanker officially handed over by Member for South Barwon Darren Cheeseman MP and CFA Acting Deputy Chief Officer Brendan Lawson over the weekend.

The new crew cab Hino GT medium tanker replaces the brigade's previous light tanker and has a range of improved firefighting features.

The 4WD crew cabin truck holds around 2,000 litres of water and another 650 litres set aside for crew and vehicle protection sprays, as well as brackets to hold breathing apparatus (BA) and cylinders.

Gnarwarre Captain Anthony Young was pleased to add the truck to the brigade's fleet, which also includes an Iveco heavy tanker.

"The new tanker will boost the brigade's firefighting capability to better protect our community against incidents within our response area," he said.

The tanker was provided to the brigade through the Volunteer Emergency Services Equipment Program (VESEP) 2019-20 grant and \$50,000 in brigade funds thanks to community donations.

"I would like to thank the community for helping us raise money that contributed to the purchase of this new vehicle," Captain Young said.



"But most of all, I'd like to thank our brigade members. Without their dedicated fundraising efforts, we would not have been able to contribute toward the cost of this truck.

"This is not only a brigade asset, but is also a community asset and will help keep our community safer now and into the future."

COVID-19 Weekly Data

There were 6,452 COVID-19 cases reported in Victoria this week, an increase of 3 per cent on the previous week. The average daily number of new cases this week was 922, up from 894 last week.

Steps to protect yourself and others

These steps can help you stay ahead of Covid:

- Wear a mask: a high-quality and well-fitted mask can protect you and others from the virus.
- Get your 2023 booster: new bivalent vaccines targeting Omicron variants are available at your GP or pharmacy. To find out if you're eligible, visit the Coronavirus website. Flu vaccines are also now available.
- Let fresh air in: open windows and doors when you can – it reduces the spread of the virus.
- Get tested: if you have symptoms, take a rapid antigen test.
- Stay at home: if you have Covid, stay at home for at least 5 days until you have no symptoms.
- Talk to your doctor: if you are at risk of falling very sick, you may be eligible for Covid and influenza medicine. More

people are now eligible for these.

2023 boosters

Eligible Victorians who have not had a Covid vaccination or confirmed infection in the past 6 months can now receive their 2023 booster, irrespective of how many prior doses a person has received.

Vaccination continues to provide the best protection against becoming severely unwell or dying from Covid.

A 2023 booster is recommended for:

- All adults aged 65 years and over
- Adults 18-64 years who have medical comorbidities or disability with significant or complex health needs.
- For those not infected or vaccinated in the past six months, a 2023 booster should be considered for:
 - Adults 18-64 with no risk factors for severe Covid
 - Children and adolescents aged 5-17 who have medical comorbidities or disability with significant or complex health needs.

RATs available through local councils

All Victorians are eligible to pick up two free packets of rapid antigen tests (RATs)

through their local council.

The council RAT distribution program is currently operating across more than 400 local sites, such as libraries and council customer service centres. The program is open to all Victorians, with all eligibility requirements now removed.

Individuals can collect up to two packets for themselves plus up to two packets for each household member per visit, while people with a disability or their carer can collect up to four packets of tests.

Antivirals and other medicines

People aged 60-69 with one additional risk factor for developing severe disease are eligible for antiviral treatments.

Early testing for Covid and diagnosis are essential to access Covid medicines. For most Covid medicines to work best, you must take it within five days of getting sick – the earlier the better.

To access the most up-to-date information on Covid in Victoria, visit the Victorian Coronavirus website or call the Coronavirus Hotline on 1800 675 398.



Winchelsea Community Facebook pages

What's on in Winchelsea

**FLYERS, LOCAL EVENTS,
SMALL BUSINESS,
PROMOTING WINCHELSEA**

facebook.com/WhatsoninWinchelsea

Winchelsea FREE

FREE ONLY

facebook.com/groups/winchelseafree

Winchelsea Community Information AUSTRALIA

POSITIVE DISCUSSION

facebook.com/
groups/207538644446972

Winchelsea Classifieds 3241

FOR SALE ONLY

facebook.com/
groups/216942861684082

Winchelsea Lost and Found

LOST PETS

facebook.com/
groups/768187693217518

Winchelsea Op Shop

facebook.com/
HospitalAuxiliaryOpShopWinchelsea

Winchelsea Shire Hall (Community Centre)

facebook.com/WinchelseaShireHall

Winchelsea Community House

facebook.com/
winchelseacommunityhouse

Winchelsea Coronavirus Community Support Group

facebook.com/
groups/2676957719207927/

The Green Winchelsea Residents

facebook.com/
groups/515322772623126

Growing Winchelsea Inc

facebook.com/growingwinch

Winchelsea Star

facebook.com/TheWinchelseaStar

Winchelsea Movie Club

facebook.com/winchelseamovies

Winchelsea Community Market

facebook.com/100083362387611

Winchelsea Land and River Care Group

facebook.com/envirowinchelsea/

Upper Barwon Landcare Network

facebook.com/UpperBarwonLandcare

Winchelsea & District Historical Society Inc.

facebook.com/
Winchelseaanddistricthistoricalsociety/

Winchelsea Wildlife Shelter

www.winchelseawildlifeshelter.com/

SCARS - Surf Coast Animal Rescue Service

facebook.com/groups/415211698950674

Winchelsea Gardeners

facebook.com/
groups/779878518703025

Winchelsea & District Historical Society

facebook.com/
Winchelseaanddistricthistoricalsociety/

Winchelsea Repertory Society Inc

facebook.com/winchrep/

Winchelsea Globe Theatre

facebook.com/Winchelsea-Globe-
Theatre-164790897641678

Winchelsea Uniting Church

facebook.com/winchelseaunitingchurch

St Thomas' Anglican Church

facebook.com/StThomasWinchelsea

St John the Baptist Catholic Church

facebook.com/pages/Winchelsea-
Catholic-Church/101775670163180

Winchelsea Mainly Music

facebook.com/
groups/668500343953191/

Winchelsea Health Club

facebook.com/WinchelseaHealthClub

Winchelsea Playgroup 2019

facebook.com/
groups/551663435367031

Winchelsea Girl Guides

www.guidesvic.org.au/

Winchelsea/Modewarre Scouts

facebook.com/1stModewarreScouts

Winchelsea Fire Brigade

facebook.com/winchelseafirebrigade/

Winchelsea SES

facebook.com/groups/WinchSES

Country Women's Association - CWA Winchelsea Branch

facebook.com/pg/CWAWinchelsea/

Winchelsea Bowls Club

facebook.com/Winchelsea-Bowls-
Club-533783333344345/

Winchelsea Blues Cricket Club

facebook.com/groups/8999049476/

Winchelsea Blues FC

facebook.com/WinchelseaFNC/

Mel's Dance Studio

facebook.com/melsdancecentral

Winchelsea Golf Club

facebook.com/winchelseagc/
facebook.com/
groups/1324943804676697

Winchelsea Kyokushin Karate Club

facebook.com/winchelseakyokushin

WYLD Winchelsea Youth Leisure and Drop in

facebook.com/
groups/569737570027065/

Lions Club of Winchelsea

facebook.com/LionsWinchelsea

Winchelsea Probus

facebook.com/893535194971083
10am 1st Mon month at Sen Citz Hall




Creative Places Strategy 2023 - 2031

Our draft Creative Places Strategy is underpinned by a vision for Surf Coast Shire to be a flourishing creative destination by 2031.

We invite our many creative people, organisations and communities to help shape that future by viewing the 2023-2031 draft strategy and providing submissions from 1 May.

Find the strategy and make submissions by 28 May via surfcoast.vic.gov.au/CreativePlaces




Farmers, lease your land for passive income

Lease your land for a solar farm and receive an additional passive income for 30 years and up to \$50,000 upon construction, all the while diversifying your income and increasing revenue.

Call Jesse: (03) 4420 9661
jesse@bnrgleeson.com.au



We take care of everything for you

Winchelsea Taxis is now Surfcoast Taxis

Our fleet of vehicles are growing to all late models and we are covering an extended area including Winchelsea, Colac, Bannockburn, Inverleigh, Great Ocean Road and Geelong.

We have a fleet of 10 seater Maxi Vans, all with capacity to carry wheelchairs.

Surfcoast Taxis Pty Ltd
All Bookings: 0408 325 992
Fax: 5267 2699
Email: bannotaxis@gmail.com
 (Admin or Stan 0429 672 888)
 66A Batson Street
 Winchelsea 3241



Accounts NDIS provider. TAC, DVA etc

NDIS provider number 4050001044
 NDIS provider number 4050001048



Book your next ride with **smartHAIL**

Book Track Pay Rate

Download on the App Store GET IT ON Google Play



SIMPLE STORAGE SOLUTIONS

- Personal & Business Storage
- Boat, Caravan & Vehicle Storage
- High Security Premises
- Individually Alarmed Units
- Electric Gate Access
- 7 Day Access & CCTV

YOUR STORAGE PROBLEMS SOLVED

5267 3116
 6 ALSOP DRIVE, WINCHELSEA 3241



More skills for women across Victoria





Refinance, renovate or just re-evaluate

With interest rates on the rise, there's never been a better time to review your home loan.

Enquire online at bendigobank.com.au/healthcheck or call your nearest branch on 03 5289 1787.

Community Bank · Winchelsea & District

Bendigo Bank

*Roy Morgan Single Source (Australia), December 2022. All loans are subject to the bank's normal lending criteria. Fees, charges, terms and conditions apply. Please consider your situation and read the Terms and Conditions, available online at www.bendigobank.com.au or upon request from any Bendigo Bank branch, before making a decision. Bendigo and Adelaide Bank Limited ABN 11 068 648 178 AFSL 237875 | 1678888-1734881 | (05023) DUT_29309270_26104/2023

RONNIE.

Winchelsea's pet groomer.

For appointments
0436 008 989
tangopetgrooming@gmail.com

GREAT Bundle Deal on Bosch Hot Water... FROM ELGAS

Buy any Bosch Bluetooth continuous flow hot water model - 16Litre, 20Litre or 26Litre and **Receive \$100* in Elgas bonus LPG gas credits**

*For more details: www.elgas.com.au/appliances/bosch-continuous-flow-16-20-26-lpg-bundle-sale

AND... for new customers, an additional \$80 WORTH OF LPG GAS CREDITS when you open a new LPG Gas account with Elgas**

NO CONTRACT TO SIGN

**Further details can be viewed at www.elgas.com.au

Ask about the Elgas Easy Payment Plan - 12 months interest free*** on selected LPG appliances

***Further details can be viewed at: www.elgas.com.au/epp

Automatic tanker gas bottle refill OR gas bottle exchange refill is available for home or business....
Call today or visit our website for our many customer benefits and latest offers

131 161 **ELGAS**
www.elgas.com.au

M&B WOOD PLUMBING

Call Matt - 0418 319 357
mbwoodplumbing.au

Servicing Winchelsea & surrounds

- General maintenance & blocked drains
- Gas fitting & hot water service upgrades
- New homes & renovations

Commercial | Industrial | Domestic

HAMILTONS

Truck & Bobcat Hire
Give Aaron a Call
0438 438 623

Chiropractic - Remedial Massage - Myotherapy - Sound Healing - Breathwork

Chiropractic care for:

Stress & Anxiety	Pain Management
Body Aches & Tension	Family Wellbeing
Poor Sleep	Health Longevity

03 5267 2240 Shop 4/21 Hesse St Winchelsea <https://onebodychiropractic.com.au/>



eldersrealestate.com.au



You're in Safe Hands With Peter Lindeman Delivering Exceptional Results for Over 20 Years

If you're thinking of selling a Rural or Lifestyle acreage property on the Bellarine, the Barwon or beyond then think Peter Lindeman. Peter spent 20 years managing farms before jumping the fence to sell them; and over the last 20 years he's helped clients achieve extraordinary results, more often than not surpassing their expectations. Why not let Peter show you how he can help you achieve an outstanding result for your property.

Peter Lindeman
RURAL AND LIFESTYLE SALES MANAGER – ELDERS GEELONG



P: 0418 525 609 E: peter.lindeman@elders.com.au



WARNOCOORT 12 TRASKS ROAD

★★★★★ **Seller review**

“ The sale of Kelowna was quick, painless and brilliantly handled by Peter Lindeman, from Elders Geelong, and we can't thank him enough. Peter came highly recommended, by a friend, and he certainly lived up to his impressive reputation. He's such a lovely chap. Easy to chat with. Has years of experience. And genuinely cares about his clients and buyers. Plus he turned a load of heritage quinces, from our orchard, into the most delicious jelly and paste. Is there no end to the man's talents! If you think you can't use an Agent from out of town, think again. We did. And we couldn't be happier. Elders are very lucky to have this Geelong Team! ”

★★★★★ **Buyer review**

“ Peter Lindeman was an absolute gentleman throughout the negotiation's for a property I recently purchased in the Western District. It was a difficult few days to get through but Peter was kind caring and honest! What more can you ask for from the agent when purchasing something that means so much to you. I'd like to take this opportunity to thank you sincerely Peter for helping me achieve my dream of owning this property that I have loved and held so dear to me since I was a small boy :-) ”



BARRABOOL 215 ANDERSONS ROAD

★★★★★ **Seller review**

“ Peter was our agent for a farm sale. We had engaged him with other transaction, and as with the others he did not disappoint. He gave us all he had to get us a great result. Having been in a large number of property transactions over the years he is unquestionably the best agent we have had.

We couldn't recommend him highly enough. ”

★★★★★ **Buyer review**

“ We really couldn't say enough about how professional/helpful Peter Lindeman was during and after our search for a property in Victoria. We were very particular what we wanted and where; location is key! Peter Listened to what we wanted never wasted our time showing us properties that didn't fit our needs. Tricky negotiation, but thanks to Peter it all turned out very well. ”



Breeze Health and Wellness, Exercise Physiology
32-34 Main Street, Winchelsea (old post office)
 Chronic disease? Injured? Wanting improved athletic performance?
 We can help you manage, rehabilitate and prevent many common ailments through movement.
 Speak with your GP about a referral for a care plan.
 Private health accepted - no referral needed.
 Call Brenton on 0428 790 023 to discuss or email breezehealthandwellness@gmail.com
 Exercise is Medicine, Motion is Lotion. Move with Ease at Breeze.

Moriac Veterinary Clinic
0447 781 089
PHONE 24 HOURS
 784 Hendy Main Road Moriac
 info@moriacvet.com
 www.moriacvetclinic.com.au
HOURS // Monday - Friday: 8am - 5pm

Aquafire Healing
 Transforming Your Health
 Through the Healing Power of Nature
NATUROPATHIC MEDICINE • HERBAL MEDICINE
NUTRITIONAL MEDICINE • HOMOEOPATHY
REMEDIAL MASSAGE
 www.aquafirehealing.com
 Ph: 0415 530 276

Located at 36 Main Street, Winchelsea 3241
 For any enquires or bookings please contact the clinic on 5292 8028.
 Or visit our website: www.winchmc.com.au
Opening Hours:
 Monday - Friday 8:00am - 5:00pm
 (Monday Evening Clinics available and selected Saturdays)

Our clinic accepts online bookings via the app called HotDoc.
 Download the app on the App Store or Google Play or head to our website.

WINCHELSEA LIONS CLUB

PAPER RECYCLING

Paper depot rear of Senior Citizens Rooms Harding Street NEWSPAPERS, MAGAZINES, PHONE BOOKS WANTED

RAISING FUNDS FOR OUR TOWN & DISTRICT
5267 2011 or 0408 520 606

Water Supply Specialists
WATER SOLUTIONS
 74 Dennis Street, Colac
 5231 1861

ALL THINGS WATER:
 - PUMPS - PIPES
 - FITTINGS - TANKS
 - POOL CHEMICALS
 - IRRIGATION
 - WATER PURIFICATION
 - SOLAR - REPAIR

M & L DRAYTON
PLUMBING SERVICES

REG No 24356 C/A No C02594

- Domestic and Rural Plumbing
- Roofing
- Sewerage & Septic
- LPG & Natural Gas Connections
- Motorised Drain Cleaning
- Backhoe Hire

Phone Mark 5288 7244
PO BOX 98 WINCHELSEA 3241
Mobile 0428 520 142

- Domestic and Commercial hire equipment
- Industrial welding gas
- Digging and Earthmoving equipment
- New trailers and trailer repairs
- Firewood
- Stockists of Royal Oil Lubricants products
- LPG for domestic and commercial requirements

Give Chris and the Team a call on **5232 1177** or email **info@colachire.com.au**
www.colachire.com.au
101 Wallace St Colac 3250



**Winchelsea
AUTO
SERVICES**
One stop auto shop
17 Alsop Drive

- ❑ LOG BOOK SERVICE
- ❑ AUTO ELECTRICAL
- ❑ TOWING
- ❑ AIR CONDITIONING
- ❑ CLUTCH & BRAKES
- ❑ TYRES
- ❑ WHEEL ALIGNMENT
- ❑ BATTERIES

**CAR, TRUCK REPAIRS
& Roadworthys**

PH: 5267 3001

Mob: 0417 137 457

Pixie Wash
Mobile Doggie Care
Dogs up to 20kg
Pixie Heath
0417 586 080

Winchelsea Towing
24 Hour Accident and Breakdown Towing
0418 535 402



**NATURAL GAS
CONNECTIONS**

**M. & L DRAYTON
PLUMBING SERVICES**

YOUR LOCAL LICENSED

- PLUMBERS (24356)
- GAS FITTERS
- GAS CONVERTERS
- CARBON MONOXIDE TESTING

MARK 0428 520 142

**R.A.K. DAVIS
& SONS**

**CARTAGE
CONTRACTORS**

WINCHELSEA

SUPPLIER OF ALL QUARRY MATERIALS, TRUCK HIRE

CARTAGE OF GRAIN, LIME, GYPSUM & SUPER

LANDSCAPE & GARDEN SUPPLIES

56 WILLIS ST, WINCHELSEA

Ph – 5267 2094

Ryan – 0438 672 281

Email: rakdavis@bigpond.com

Funeral Planning

Working out what is best for you.

Prepaid Funerals, Funeral Bonds, Pay-by instalments...

There are many options and its important to make the right choice.

Alyson Burchell will be available by appointment to answer any questions about funerals and planning ahead.



For more information or to make an appointment contact Sue on 5221 4788

Tuckers Community Office,
Surf Coast Taxation Services, 22 Willis Street,
Winchelsea

**First Tuesday of the Month,
by appointment 10.00am - 12.00pm**

Caring for families since 1883
Tuckers
Funeral & Bereavement Service
...for a life worth celebrating
5221 4788
www.tuckers.com.au

- All your caulking & waterproofing needs
- Bathrooms (files, mirrors, vanities, bathtubs, shower)
 - Kitchens • Flooring (skirtings, tiles, floorboards)
 - Splash Backs • Pool Joints • Brick Work
 - Expansion Joints
- Phone/Text/Email: luke@westcoastsealants.com



LUKE BATH
CAULKING CONTRACTOR

0406 845 098
westcoastsealants.com

PROVIDING QUALITY WORK SINCE 1995



Lupton BUILDERS

SPECIALISING IN QUALITY

REGISTERED
Building Practitioner

<ul style="list-style-type: none"> • NEW HOMES • ALTERATIONS • CARPORTS • BATHROOMS 	<ul style="list-style-type: none"> • EXTENSIONS • DECKS • VERANDAHS • WINDOW REPLACEMENTS 	<ul style="list-style-type: none"> • RENOVATIONS • PERGOLAS • RE-GLADS
---	---	---

LEIGH LUPTON

0438 840 104

CHRIS LUPTON

0407 681 514

LEIGHLUPTON17@GMAIL.COM

Est. 1977

Winchelsea Star

Since 1977

ISSN 2202-6851



HF RICHARDSON

PROPERTY

Servicing all your real estate needs

Ken McDonald 0418 524 150

Residential | Rural Lifestyle | Agricultural Farms

CHARLES STEWART

rma network Accredited Member

Charles Stewart & Company are leading livestock and real estate service providers covering Victoria's south west

	LIVESTOCK
Jamie McConachy	0418 522879
Peter McConachy	0408 522878
Matt Nelson	0428 315400
Gerard Bohan	0400 005541
Lachie Barclay	0438 346291
John Thornton	0408 526367
Dougal McIntyre	0439 575612
Ross Spitty	0419 539717
	REAL ESTATE
Michael Stewart	0418 520467
Daryl Osborne	0419 388341
Anthony McDonald	0418 593597
Gerard Bohan	0400 005541
Stephen Lugg	0417 556098
Josh Lamanna	0417 586032

Office
56 Bromfield Street, Colac
www.charlesstewart.com.au

Green Lead Electrical

Connecting you to a greener future
REC 23618

0467 097 101

Servicing Geelong & the Surf Coast

Specialising in all residential electrical work including:

- Switch board & lighting upgrades
- Outdoor lighting
- Electrical safety checks
- Energy efficient LED lighting
- Ceiling sweep fans & ventilation
- Energy saving advice

Phone Martin Wilkinson:
0467 097 101

greenlead@outlook.com

132268-CG18-14

MGT BUILDING & CONSTRUCTION

NEW HOMES | EXTENSIONS | RENOVATIONS

Ph: 0409 433 687