

Ripples

Style Guide



Ripples



Welcome to the Ripples Style Guide

Here at **Ripples**, we've been designing beautiful bespoke bathrooms for over 35 years and in that time we've seen a revolution, not just in the way that bathrooms look but in the way that they feel. No longer a purely functional room within the house, the bathroom of today represents an entirely personal experience and in a world of templates, numbers and spreadsheets, there's much to be celebrated about the free-flowing nature of interior design. The way your bathroom is designed says so much about you, with each individual element a reflection of your lifestyle and even your personality. More and more, we're recognising the value in creating a beautiful bathroom, not just for adding value to your property but more importantly for adding to your wellbeing.

In this edition of the **Ripples** Style Guide, we focus on the individuality of bathroom design, from creating the perfect bathroom for your family (p.28) and different ways to re-imagine a cloakroom (p.34) to exploring the latest products to customise your space (p.8).

We also have an exclusive feature from one of the UK's top interior designers (p.26), top tips for clearing clutter from an organisation expert (p.42) and, of course, plenty of inspirational bathrooms from our designers (p.22, p.48 and p.60).

I hope this Style Guide gives you the advice and inspiration you need to ignite your bathroom project and create a space tailor-made to you. We hope to see you in one of our showrooms very soon.



Rachael Rickhuss, Editor

Style Guide Contents



8



60



62



20

- 08** *Ripples radar*
The latest and greatest bathroom products on our radar right now.
- 16** *Advice: Dos & don'ts*
Our designers share their biggest dos & don'ts when it comes to bathroom design.
- 20** *Meet the maker*
A behind-the-scenes look at one of the most prestigious brassware manufacturers in the UK.
- 22** *Inspiration: New neutrals*
Our designers showcase some of their favourite neutral bathrooms.
- 26** *Exclusive: Sophie Robinson*
Create a vibrant bathroom with these tips from designer, TV presenter and queen of colour Sophie Robinson.
- 28** *Advice: How to create a family bathroom*
Creating a fun and functional family bathroom.
- 32** *Product spotlight*
Brand-new additions to a totally timeless collection.
- 34** *One brief, two ways*
Two designers showcase their ideas for a cool and colourful cloakroom in a Victorian home.
- 40** *Product spotlight*
An innovation in sustainable showering.
- 42** *Advice: Six top tips to create a calm and clutter-free bathroom*
Organisation expert to the stars, Lucy Mansey, shares her tips for clearing the clutter in the bathroom.
- 44** *Advice: Design hacks*
Designer advice featuring the top 10 hacks you need to know.



28

32



40

48



50

46 *Designer debates*

Traditional vs. trend-led... our designers debate both bathroom styles.

48 *Inspiration: Get the look*

Discover the products and design decisions behind a stylish client en-suite.

50 *Bathing rituals from around the world*

Take inspiration from across the globe with these international bathing rituals and routines.

54 *Product spotlight*

Redefining accessible bathroom design.

58 *The greatest toilet in the world*

A look at how we're supporting those less fortunate... and it all starts with a toilet.

60 *Inspiration: Cosy cottage bathroom*

Explore this stunning client bathroom housed in a cosy country cottage.

62 *Advice: How to choose a shower screen*

Designer advice on choosing the perfect screen for your shower.

66 *Life lessons from the bathroom*

Some of our favourite interiors writers describe their dream bathroom.

68 *Showroom directory*

Find your nearest Ripples showroom to discover our collection and speak to a specialist bathroom designer.

70 *Final word*

Closing thoughts and a look back at the history and heritage of Ripples.





WATER
WORKS



£150



Ripples radar

Want to know our designers' 10 favourite bathroom products right now? Look no further than the Ripples radar, an edit of the latest and greatest furniture, sanitaryware and accessories.

01

▲ BOLD BRASSWARE

This collection of boldly-coloured bathroom taps, created in collaboration with designers Edward Barber and Jay Osgerby, features six colour variants inspired by water, the earth and the sky. Each tap has a gloss finish, which adds depth and vibrancy as well as an easily cleanable surface.





02



▲ MIRROR MIRROR IN THE WALL

A stunning mirror cabinet, which has to be seen to be believed. Featuring only the highest quality materials, this cabinet provides ample storage space, a crystal-clear mirror and even a socket for charging a toothbrush or electric razor. It's all brought together by an integrated ambient light, which offers both practicality and atmosphere. This cabinet comes in a range of sizes and formats, from one to four doors, and can be positioned inside a stud wall for a sleek and seamless finish.

03

◀ TREND-LED TUB

This bath has a unique chunky design with curved edges at either end and a generous bathing area. To further enhance its quirkiness, the bath can be supplied with an additional external shelf, offering the perfect place for a candle, glass of wine or to simply hold your bubble bath. The shelf is available in a number of special finishes to match your bathroom brassware, from brushed bronze to matt black.



04

▶ GOING FOR (ROSE) GOLD

Rose gold is undoubtedly the brassware colour of the moment and, with the recent popularity of fluted shower glass, this rose gold reeded shower screen has it all. Not only is this shower screen bang on trend, it's also beautifully made and is finished with a special coating, which ensures it's built to last.



05

◀ MIDAS TOUCH

Make a statement with this beautiful basin, which features a soft inner surface encased in a special-finish metal of your choice. Available in round or rectangular options in a range of sizes, this basin oozes glamour and elegance.



06

◀ A NEW STYLE OF TILE

Hailed as the world's first shower tile, this shower tray/tile hybrid provides an innovative approach to shower drainage. Available in seven sizes across 31 stunning colours, the shower tile sits flush with your bathroom floor for a seamless experience underfoot. Glazed in titanium steel, this tile is more hardwearing than plastic and even marble trays and is scratchproof, non-porous and UV-resistant.



07

▼ SLEEK STORAGE

Keep clutter at bay with this collection of modular vanity units. With compartmentalised drawers providing a neat place to store all your bathroom items, you'll never mix your cotton buds with your creams again! Made to measure in a huge array of colour and countertop options, you can mix and match to create something bespoke.



08

▶ BACK TO THE FUTURE

Embracing all that is great about contemporary design, this uber-modern basin is bound to make an impact in your room. Available in a number of matt and gloss shades, the basin can be placed on top of a vanity unit or mounted to the wall for a futuristic finish. The basin is part of a wider collection comprising vanity units, WCs and accessories.



09

◀ A SPLASH OF SUSTAINABILITY

We can all do our bit to help reduce water consumption and this tap is a great place to start. By using water-saving aerators, this tap offers a reduction in water and energy consumption of around 30%. It's also equipped with cold-start functionality, which prevents unwanted hot water consumption since only cold water is supplied when the lever is in the central position.





10

▲ LET THERE BE LIGHT

Continuing with the fluted trend, this ribbed wall light offers all the beauty of a decorative light but with the safety features of a bathroom light. IP44 rated for bathroom use, this light features a dimmable LED bulb housed in an elegant glass bell, which gives a beautiful art-deco inspired look. Each light is handmade in Britain by specially trained artisans.

Visit your nearest Ripples showroom to discover our full product collection.





Dos & don'ts

We asked our designers for their biggest dos & don'ts when it comes to bathroom design.



CAROLINE GREIG
DESIGNER

DO use different light sources, including practical lighting (spotlights, mirror cabinet), mood lighting (under vanity unit, alcove lighting) and decorative lighting (wall lights, pendants) to ensure the space is not just usable but is multi-dimensional and atmospheric. Well thought-through lighting can really elevate a bathroom.

DON'T buy a bath without doing your research. Baths come in so many different sizes, shapes and materials so it's important to choose one that will fit you.

DO invest in a quality vanity unit; bathroom furniture will be handled a lot so it needs to be as durable as possible.



DON'T play it too safe with your brassware choices.

There are so many lovely finishes as an alternative to the standard chrome and special finishes can make a bathroom look more exclusive.



KALLI KARELLA
DESIGNER

DO use Pinterest to your heart's content! It's a great starting point for any design and can give both you and your designer a sense of the style and layout options you'd like to explore.

DON'T forget storage. This can often be overlooked but is such a vital aspect of a bathroom. Choosing a vanity unit with an integrated basin on top is an easy way of combining two-bathroom products without compromising on space. Another great storage hack is adding niches within your shower/bath space to allow you to store your products without having to put them away every time you use them.

DO go wild with tiles! These can be a major statement within your bathroom design so be bold and play with colour and pattern. Tiles are the perfect way to inject personality into your bathroom space and can be updated over time should your style change





HELEN BROWN
SHOWROOM OWNER
AND DESIGNER

DO understand how you use your bathroom and what you need your new bathroom to do for you. If you think it can't be done, don't worry, because a good designer will be able to give you exactly what you are looking for. We have years of experience and absolutely love a challenge!

DON'T position everything against the walls. This will leave you with a big empty space in the centre of the room and an unadventurous design.



DO use colour to make a bold statement. When done right, a bright scheme can look fantastic and will give you something unique.



CHRIS PAYNE
SENIOR DESIGNER

DO opt for underfloor heating. It really creates a sense of luxury and is the most efficient way of invisibly adding warmth to your bathroom. Not only does it take the chill off the floor tiles but it will help to dry off any residual water left after showering, especially in a wetroom. It can also be applied to walls (which feels particularly sumptuous when you have a seat in the shower) and app-based controls mean you can even turn the underfloor heating on remotely, so your bathroom is warmed up ready for you when you get home.

DON'T plan your bathroom around an imagined re-sale requirement (unless you are only renovating the bathroom to sell the property.) A bathroom is a personal space which should be designed around you and your requirements, not the person who might buy your house from you in the future. Spend time thinking about what is important to you and it will reward you with many years of enjoyment.

DON'T scrimp on budget. Invest well in your bathroom by purchasing quality products and it should last in excess of 15+ years.



DO choose a rimless wall-hung WC with a soft close seat. In a contemporary scheme, a wall-hung WC is a perfect choice and will make your bathroom feel larger by opening up space on the floor, as well as being easier to clean. Rimless WCs have quieter flushes (which are great for en-suites) and a soft-close lid eliminates any loud clattering.

For more advice from our designers, visit ripplesbathrooms.com

MEET THE MAKER

Samuel Heath

*We take you behind the scenes of British brassware brand **Samuel Heath** to find out more about its history and heritage and what makes its brassware so enduring.*

HISTORY IN THE MAKING

Samuel Heath has been in business since 1820. At the time it was just one of hundreds of brass foundries here in the UK. Now it is one of the remaining few. This family-run business still designs and manufactures from the same Birmingham factory where it all began and it prides itself on its foundations of integrity, provenance and exceptional quality. Its products are used and enjoyed by homeowners, designers and architects alike and it's a trusted brand that we at Ripples are immensely proud to work with.





THE COLLECTIONS

Samuel Heath may have a long history but it's not one to rest on its laurels. As well as its classic collections, the brand is also a pioneer of new movements in bathroom trends. Always innovating, always investing in the latest technology and with the very best designers in its team, **Samuel Heath** is one of the most imaginative innovators in the industry.

PRECISION DESIGN

The collections themselves offer something for every bathroom project and every style preference. The *Landmark Industrial* collection is ideal for urban bathrooms and industrial schemes with precisely machined

detailing and a functional feel, while *Xenon* is pure, simple and bold, perfect for making a statement with minimal fuss. The latest collection, *Forme*, offers basin and bath taps, concealed showers and accessories with a pared-back design and slim, curved profiles for a chic and contemporary aesthetic. A minimal approach is reflected not only in design ethos but also in a mindful approach to manufacture. Whilst the collection is crafted by the same talented workforce that produce all other **Samuel Heath** products, the adoption of new manufacturing processes allows for the use of fewer metal parts to conserve precious metals and reduce the factory's consumption of energy.

MANUFACTURING PROCESS

With its factory in Birmingham, **Samuel Heath** is a British brand steeped in heritage. Its collections of classic and contemporary brassware are made from pure solid brass using the latest modern production techniques with a nod to the past thanks to its traditionally honed artisan crafts and skills.

Every piece is hand polished for a flawless finish before being electroplated. This blending of the old and new creates a wonderful array of products with quality and longevity, beautiful to look at and a joy to use.



Whether you want a cool, calm and contemporary bathroom with matt black brassware to complement crisp white sanitaryware and timber furniture or an antique gold finish to enhance a luxurious marble scheme or anything else in between, Samuel Heath has something for everyone.

The Samuel Heath collection is available from all Ripples showrooms.

NEW NEUTRALS

The emerging trend for 'new neutrals' sees warm white and balanced beige take centre stage. Not too warm and not too cool, this colour palette creates a feeling of rest and retreat without feeling too clinical, especially when paired with textural materials such as wood and rattan.



GURNAAM SHARMA
SENIOR DESIGNER

“It’s important to consider brassware colours, as warm neutrals work best with either brushed nickel or brushed bronze.”





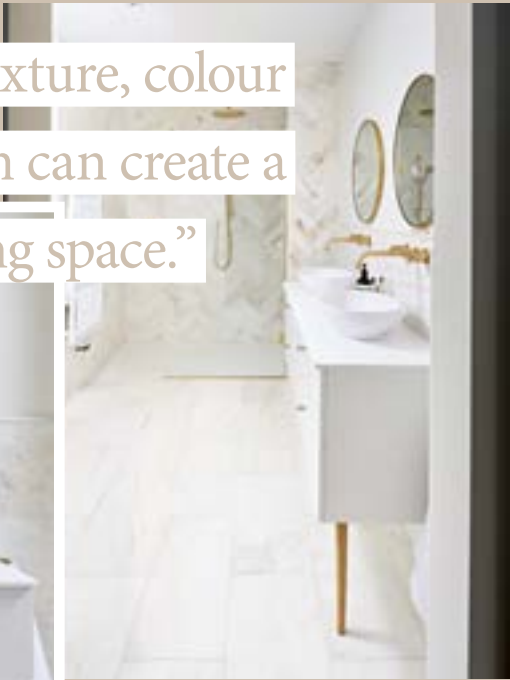
NEIL CURTIS
SENIOR DESIGNER

“Lighting is key with this colour scheme and getting the light right will stop a neutral space feeling too stark.”



LEANNE ROBEY
SENIOR DESIGNER

“Using tiles with texture, colour and shape variation can create a soft and inviting space.”



Visit ripplesbathrooms.com for more case studies.





Exclusive

Bathroom designed in collaboration with Geraldine Tan (@littlegibbell)



Creating a colourful bathroom with Sophie Robinson

Designer, TV presenter and queen of colour Sophie Robinson discusses the importance of colour, décor and details when creating a bathroom, which reflects your unique sense of style.



I'm thrilled to report that colour is most definitely having its moment in the world of interiors. One offshoot of the pandemic lockdowns is that so many people discovered the joy of decorating. For some it was discovering that the understated greys and neutrals, which have dominated people's homes for the past decade, are just not sparking the joy anymore. Be it a bright feature wall, a maximalist wallpaper or going the whole hog with wall-to-wall colour, never have people felt braver to express themselves in their homes, and thereby discovering how colour makes us feel happier at home.

“Hang paintings and pictures on the wall and throw a bold colourful rug on the floor. Decorating today is all about doing it your way, so find your happy colour, and go for it.”

It feels to me that bathroom design is the last saloon in terms of getting the colour treatment. The foundation for any bathroom has been all-white sanitaryware and while I don't see this changing any time soon, white doesn't have to be the whole story. I think historically a lot of people have been caught up in creating a timeless bathroom décor or fixating on the practicalities that have left many bathrooms feeling cold and uninviting. But for many, the bathroom is a place to pamper, indulge in some me-time and feel refreshed and rejuvenated. While white is fresh and clean, it's important to introduce other colours and materials to soften the gleam.

The good news is that your bathroom offers up plenty of opportunity for adding some colour and personality to the all-white suite. Tiles are an obvious choice and I'm loving the current trend for making patterns with plain coloured tiles. Steering away from all-neutral tiles allows you to be more original and playful. I'm really enjoying seeing how creative people are being, from creating a chequerboard to a wall of bold stripes or blocks of saturated colour. If colourful tiles feel too much of a commitment then paint is a great low-cost option. Remember, it's not just for walls, you can paint the ceiling too, especially in a small bathroom. Even with neutral tiles on the walls, colour drenching the ceiling can be really impactful. From a calming ocean blue to a cocooning tree canopy green or a cosy sunset pink, you can completely change the mood of a bathroom with colour.

I'm a maximalist at heart and wallpaper is my addiction, and I love nothing more than adding plenty of pattern to bathroom walls. You can absolutely wallpaper bathrooms if you avoid installing it in wet areas, for example within the shower and around the bath and basin. If you are worried about moisture, then a coat of matt decorators' varnish will protect it. Find a pattern that sums up your personal style. From sleek geometrics to jungle palms to pretty florals there is a pattern fit for every taste. I urge you to work out what your personal style is and then go for it.

And finally, think of accessorising your bathroom as you would any other room in your home. Create a 'shelfie' with a few well-chosen plants and objects on display, which sum up your décor style. Hang paintings and pictures on the wall and throw a bold colourful rug on the floor. Decorating today is all about doing it your way, so find your happy colour, and go for it.



JO SANGSTER
SENIOR DESIGNER

“A great shower should be at the top of the list for any busy family bathroom.”

How to create a family bathroom

The family bathroom can quickly become the hub of the home on busy mornings before the school-run or at bath and bed time at the end of the day. But it can often become a crowded and cluttered space, which is not designed in a way to suit the needs of everyone in the household. Here, Senior Designer Jo Sangster, gives her tips for creating a family bathroom with both practicality and style in mind.

INVEST IN A GREAT SHOWER

A great shower should be at the top of the list for any busy family bathroom. I normally suggest either a fully enclosed shower, or if space allows, a large walk-in shower. This ensures that water is contained rather than splashing across the rest of the floor and affecting other members of the family coming into the bathroom later. As this shower is going to be getting a lot of use, it's important to consider water usage, for both environmental and financial reasons. There are many eco-friendly shower options available, which restrict water flow whilst still maintaining an indulgent showering experience. It's also wise to think about how best to keep the shower area clean. One example I often suggest is to opt for shower glass with an anti-plaque coating, as this helps to reduce the build-up of mould and grime.

Another good tip is to include a hand shower either on a bracket to the side or ideally on a riser rail. This will enable slightly older children to have a shower on their own, as it can be lowered to their height and at the same time it's perfect for days when you don't want to wash your hair.



BATH TIME

A bath is usually a key component in a family bathroom, especially when you have young children who primarily bathe. A built-in bath usually works best as kids like to splash! You can also use the bath ledges to store bath toys and keep them within easy reach. At the same time, a built-in bath can be easily switched into a relaxing, grown-up space by hiding all those toys away and using the ledges/alcoves for candles, a glass of wine and even a phone or iPad. Safety is clearly an important consideration, especially for families with young children, so a steel bath with an additional anti-slip coating can help minimise the chance of any slips and falls. This is also a good option if you can only fit a shower-over-bath within the room.



SUSS OUT STORAGE

Like with most areas in a family home, storage in a bathroom is key. I would always look to include storage in and around the basin area, with drawers in the vanity unit to store towels and bathroom products and a mirror cabinet above the basin to keep medicines out of reach from children. Keeping storage solutions wall-mounted is a great idea, as it opens up floor space which can then be used for items such as stools, scales and baskets of bath toys.



“Another good tip is to include a hand shower either on a bracket to the side or ideally on a riser rail. This will enable slightly older children to have a shower on their own, as it can be lowered to their height.”

ADD SOME WARMTH

When considering heating options for a family bathroom, the ideal combination is underfloor heating as well as a heated towel radiator. Be sure to choose a towel radiator which is large enough to heat the space and to hang each family member's towel from at the same time. It's also worth adding additional hooks on the back of the door and/or on a wall for any additional towels to hang from.

GET THE LIGHT RIGHT

Lighting can be used to create a variety of environments within a family bathroom and is particularly effective when it comes to winding down at bath time in the evening. Ceiling spotlights are generally a must-have in most bathrooms, however look to have these fitted on a dimmer so you can adjust the mood and atmosphere of the room depending on the time of day. I also like to include lower-level lighting in my bathroom designs, either on a separate switch or even a sensor, which can guide the way during any middle-of-the-night trips to the bathroom.



“I also like to include lower-level lighting in my bathroom designs, either on a separate switch or even a sensor, which can guide the way during any middle-of-the-night trips to the bathroom.”

ADD STYLE WITH TILES

Anti-slip floor tiles are a must-have for busy family bathrooms and choosing a larger format option is easier to keep clean as there are fewer grout lines to contend with. I feel it's nice to add a little colour and make the space more fun and tiles are a great way to do this.

3 quick tips

- 1. Choose a cool-start tap.** Not only is this a great eco-friendly option as it only fires up the boiler when turned to warm, but it's much safer for children to operate as they can't accidentally be burned by hot water.
- 2. Avoid harsh edges.** This mostly applies to basin taps and bath/shower fittings as being metal means they can have very sharp corners which can be dangerous to children. Luckily, slightly softer lines and edges help to create a warmer and more homely feeling, as well as being a safer option.
- 3. Consider everyone.** If you have a multi-generational home then you might want to add a support bar for getting in and out of a bath and maybe a tiled seating area within the shower if space allows. These adaptations can still look stylish and it's surprising how helpful these are for all generations.

Visit ripplesbathrooms.com to see a selection of family bathroom case studies.

Totally timeless

Furniture and sanitaryware specialist Laufen has expanded its range to include a brand-new countertop basin and bath. These beautiful new products strike the perfect blend between contemporary and traditional design, offering the ideal choice for any bathroom scheme.

“A freestanding bath makes a statement with a luxurious boutique hotel look. Elegant and timeless, these baths add instant wow factor to the bathroom and are on the top of many clients’ wishlists.”

Designer, Kimberley Finch

Bath

The new 1500mm *Elgin* bath features an undulating shape which beautifully complements the basins, WCs and furniture in the rest of the range. The bath is made from a solid surface material, which is incredibly hard-wearing yet pleasing to the eye.



Basin

The *New Classic* countertop basin offers a soft, elegant shape available in three finishes and multiple tap configurations. It's made from a revolutionary ceramic material with a strength equivalent to that of steel but with a wafer-thin profile, providing the perfect design-led and space-saving solution for compact bathrooms.

The full Laufen range is available through all Ripples showrooms.

Find your nearest showroom at ripplesbathrooms.com



One brief, two ways

We tasked two of our designers with creating a scheme for an imaginary (but not uncommon) client brief, to see how each would approach the design.

BATHROOM

A downstairs cloakroom in a Victorian property measuring 1.2m wide x 2m long with a 2.4m high ceiling and a small window 30cm wide x 60cm high at the far end. As this is part of a wider renovation project, the door can be positioned where the designer sees fit.

BRIEF

The homeowners are a couple in their 40s with no children, who want to create a space that will be the envy of their neighbours.

The scheme needs to give a nod to the Victorian heritage of the property but with a modern twist. As it's a small space, the clients would like to have fun with the design, embracing colour, texture and pattern whilst incorporating lots of light and maximising space as much as possible.

BUDGET

£8,000 (excluding installation)



Design 1

CONNOR WARREN
DESIGNER

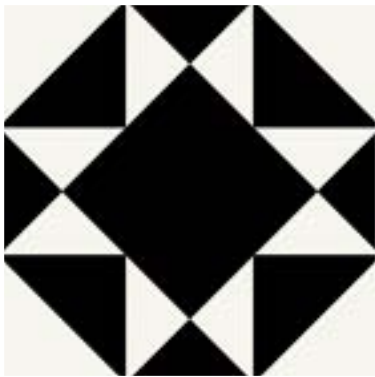
As this cloakroom was for a couple, I really wanted the space to be sophisticated and luxurious but with an element of fun. To achieve this, I've chosen an Aztec-style patterned floor, mixed with a striped tile behind the basin to create a bold contrast. On the rest of the walls, I opted for a dark green paint and combined this with white wood panelling to bring another layer of texture. I decided to incorporate a traditional-style close coupled WC, as it suits the style of the property and works nicely against the wood panelling.

The vanity unit spans the whole wall, offering lots of storage, which helps the room feel open and spacious. The stone top with a sunken basin and wall-mounted basin mixer creates a sense of luxury, which is further enhanced by the ornate mirror and wall lights.

I was sure to incorporate plenty of lighting within the room, so the homeowners can choose to keep things dark and atmospheric with just the wall lights on or to make it feel lighter and brighter with ceiling spots as well, depending on their mood.



“I really wanted the space to be sophisticated and luxurious but with an element of fun.”





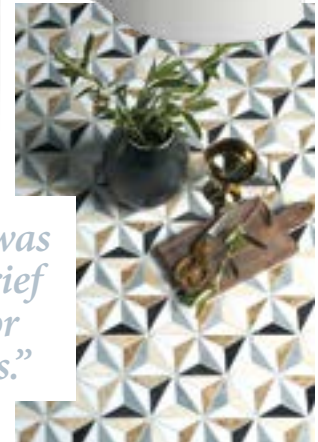
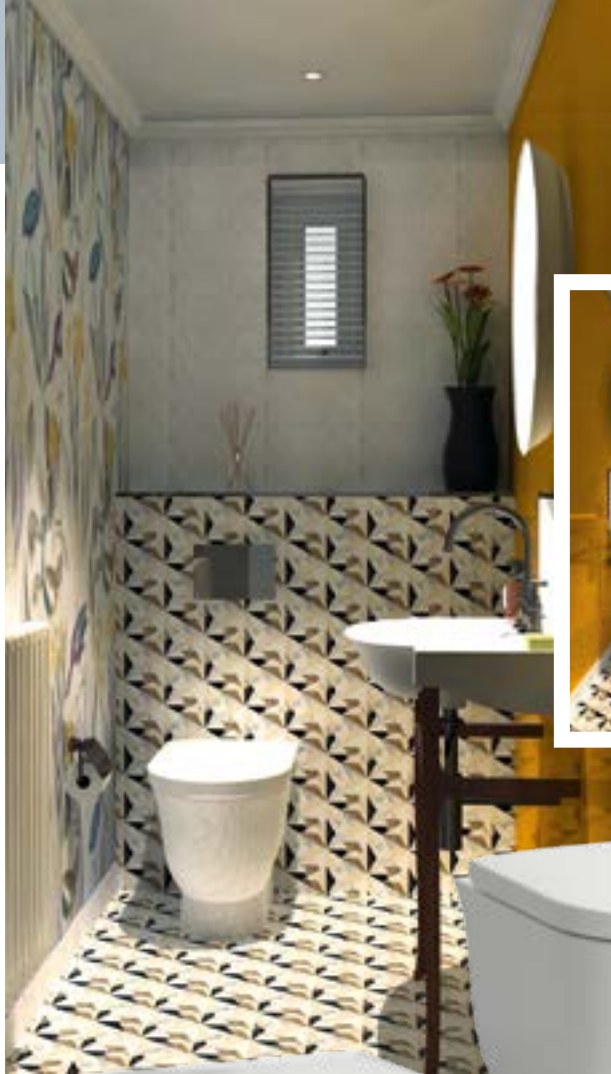
Design 2

GURNAAM SHARMA
SENIOR DESIGNER

Experimenting with texture, colour and pattern adds impact to a small space, which is why I chose a statement tile for the floor featuring a decorative mosaic pattern in real marble. I opted for a mustard colour on the basin wall to add a modern element to the room and used wallpaper featuring yellows, blues and greys to tie the whole scheme together. The basin has a soft, classic shape and due to the manufacturing process the rim of the basin is less bulky than other alternatives, so it's well suited to a small room. I also chose a thin walnut stand to sit underneath the basin, which has a nice decorative effect. Maximising light was a key part of the brief so I chose a mirror with in-built LEDs to brighten things up and add further interest to this part of the room.

For the brassware and matching accessories, I felt a contrast to the walnut basin stand would work well so I selected a traditional style but with a modern finish. The three-hole basin mixer with crosshead and swan neck suits the style of the property well and when paired with the marble tiled splash back, it really pops. I also extended the marble tile to the back wall with the window as it's subtle yet sophisticated and grounds the rest of the scheme.

To reference the Victorian features of the house, I finished off the walls with a plaster coving and used the marble tile as skirting between the painted and wallpapered walls and the floor.



“Maximising light was a key part of the brief so I chose a mirror with in-built LEDs.”



MATISSE
PAPIERS DÉCOUPÉS
BERGGREEN & CO
100% COTON
MADE IN FRANCE



“Whilst the impact of increased water usage is easy to notice on our household bills, the impact on the environment is often less visible. We can all do our bit to reduce water wastage and the bathroom is a great place to start.”

Keely Fifield, Designer

A sustainable showering experience

Taking a shower is one of the most important rituals of the day but we shouldn't have to compromise the environment in order to enjoy it. That's where the brand new *Conscious Shower* from Axor comes in; a meticulously designed product, which ensures a pleasurable showering experience whilst also minimising water consumption.

Blending a powerful water spray with a low flow rate, this shower envelops the body using as little as six litres of water per minute - that's half the water used by a typical shower. Not only does this shower do good, it looks good too. Available in rectangular or round overhead options, the *Conscious Shower* has a refined, minimalist design and comes in a range of special finishes including matt black, brushed bronze and polished red gold.





The Conscious Shower is available through all Ripples showrooms. Visit your nearest showroom to discover our full collection of eco-friendly bathroom products.

6 top tips to create a calm and clutter-free bathroom



*Award-winning professional home organiser **Lucy Mansey** (@organisedbylucy) has years of experience creating stress-free spaces and has transformed the homes of a whole host of household names, from Davina McCall to Scott Mills. Famed for her use of manageable systems without spoiling the atmosphere of a room, Lucy's approach focuses on how proper organisation can turn our homes into organised havens, which have a direct positive impact on our wellbeing. Here, Lucy shares her six top tips for creating an organised bathroom and turning it into the calm and serene space it deserves to be.*

1

Assess your storage space.

Think about the space at your disposal and where your storage falls short. Knowing which areas may need extra thought before starting with the organisation process will help you understand what you need to do and exactly what it is you are trying to accomplish with this exercise.

2

Sort it out. Another step to consider before planning how you are going to organise your room is to sort through your bathroom items. Purging the contents of your bathroom will allow you to ascertain exactly what you need. To do this, make three piles: keep, recycle and donate. Once you've decided what to keep (and removed the items to recycle and donate) these can then be sub-categorised for sorting.





“I strongly believe that your home should be a place where you feel a sense of calm, serenity and happiness. Organising is not just about the aesthetics; it’s a form of self-care.”

3

Make the most of drawer space. What is more satisfying than opening a drawer to find neatly packed containers, each with its own purpose? Think make-up in one, soaps in another and spare toiletries in a third compartment. If you can name it, there’s a storage solution for it.

4

Contain clutter. If you find that clutter tends to creep onto surface areas, like your vanity unit, find a designated place to contain it. Try using stylish trays to display your favourite bath and body products and using pretty baskets to keep rolled-up towels.

5

Maximise your cupboards. If storage space is the issue, there are ways to get around it. Rotating trays are making a comeback and will increase storage capacity in the smallest of cupboards. They’re also handy for seeing all your products at once, rather than losing products at the back of the drawer, which means you end up accidentally re-buying. Another top tip is to include strategic shelving within your bathroom. This can even be mounted on the back of your door but be careful not to overfill them so they remain a pleasure to look at.

6

Use wasted space. You may have an unused area, such as behind your bath, that would be perfect for a purpose-built cupboard or caddy. If either of those would be too much, why not add a stylish basket instead? Wicker baskets offer a beautiful and natural form of storage and ensure your products are out of sight but not out of reach.

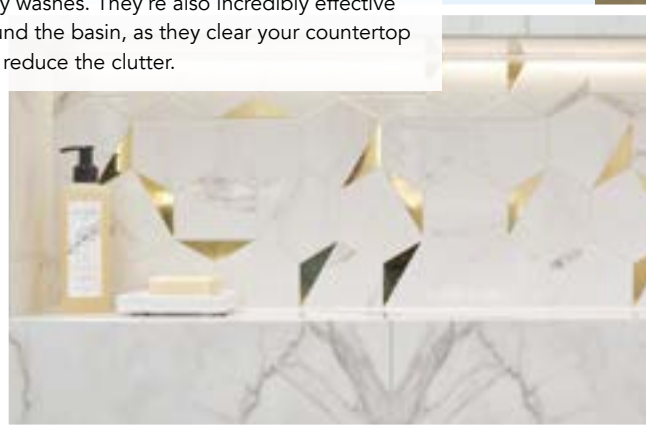
Visit organisedbylucy.com to find out more about Lucy’s approach or follow her on Instagram @organisedbylucy

Design hacks



Here, Senior Designer Alfie Guard shares his top 10 hacks for making simple but effective design decisions when it comes to your bathroom project.

1 Building wall niches can be a great way to create additional storage space or display areas within a bathroom. Commonly used within a shower area or above a bath, niches offer the perfect place to store shampoos and body washes. They're also incredibly effective around the basin, as they clear your countertop and reduce the clutter.



“This handy little shower shelf has a neat built-in glass wiper, perfect for wiping down your shower glass to minimise watermarks.”

2 Large mirrors are a great addition to any bathroom, big or small, as they bounce light around the room and add depth. Mirrors can also be a great way of creating a statement within a room and when placed in front of an ambient strip light, create an elegant hotel-inspired look.

3 When building out stud walls to conceal cisterns and pipework, why not introduce in-built storage units to make use of the space in the walls and reduce clutter on the floor? You can house toilet rolls, a toilet brush and even a laundry basket within wall niches, creating a sleek aesthetic.

4 Consider dual-purpose products and accessories, as they'll reduce clutter in your bathroom. Shower WCs are a great example, as they free up floor space where a bidet would usually sit. There are also many nifty dual-purpose accessories available, such as shower shelves with in-built squeegees and mirror cabinets with integrated charging points.

5 Introducing full or half-height partition walls within your bathroom offers the opportunity to neatly zone the space. Partitioning works particularly well in large rooms, which can sometimes look sparse when left completely open plan. Partitioning not only creates areas of interest within the bathroom but it also offers a level of privacy. If done correctly, stud walls can even be strategically placed to fit around standard-size furniture, giving the aesthetic of wall-to-wall bespoke furniture, without the cost investment.

6 Don't forget that your windows are an important part of your bathroom design. Windows are often a neglected area and can have a negative impact on the overall aesthetic if not addressed. If you are blessed with a beautiful view, you may want to design your room to create different vistas for you to enjoy. However, if this is not the case, a beautiful blind or shutters can help elevate the room.

7 Including multiple lighting sources within your bathroom is not just practical; it also helps to create atmosphere. Ambient glows help create a spa-like environment whereas directional lights inside or next to a mirror offer practical lighting for shaving or applying make-up.

8 Don't be afraid to use paint within your scheme as it's a great way to customise your bathroom whilst keeping the costs down. Painting gives you the chance to be more adventurous with your colour choices, and if you don't like it, you can simply repaint the walls.

9 Invest in sustainable products to make sure your bathroom doesn't have a detrimental impact on the environment. Opting for a 'smart shower' can be a great way of monitoring water usage, as it allows you to track what is used and restrict supply within your household. Not only is this better for the environment but it also offers a range of different settings to create the perfect showering experience.

10 Explore different ways of laying your tiles to create more interest and add flair to your design. Herringbone, chevron, basket weave and vertical stack are just a few ways of laying metro tiles...just make sure you have a good tiler!



DESIGNER DEBATES

Trend-led



FAYE'S THOUGHTS

Historically, bathrooms were driven by functionality rather than style and luxury, however, today's bathrooms are all about merging all these elements to create a fun, stimulating and personalised environment in which to spend time. To me, a bathroom should reflect your unique individuality and flair by including a range of materials, colours and textures and shouldn't be restricted by the status quo of a 'timeless' design. A trend-led design can be what you make of it.

As a designer, developing a scheme based on trending concepts is incredibly exciting as it allows me to explore my client's personality and incorporate it into a one-of-a-kind space. My favourite way to embrace trends within a bathroom design is through tiling and a feature tile is a fantastic way to introduce a popular colour, texture or pattern. By configuring tiles in an interesting way, you can create a look which is unique to you, even if you're using the must-have tile of the moment. You can also incorporate trends through painted furniture or even a painted bath, allowing you to embrace the most sought-after colour.

Another way to introduce trends within your bathroom design is through accessories. Experimenting with stylish soft furnishings, towels and decorative items can allow you to explore trends as



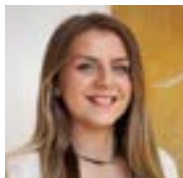
and when they arise, rather than being tied to the longevity of trend-led furniture for example.

Whichever way you decide to renovate your bathroom, make sure the design reflects your style and personality and is something you're going to love. Your designer can help guide you through all the style choices and latest trends to help bring your vision to life.

“Bathrooms are personal spaces, which is why you should create a scheme based on the trends that speak to you.”

Should you be bold with a trend-led look or keep things classic with a timeless scheme? We asked Senior Designer Faye Young and Designer Annie Simpson to give their thoughts on whether trend-led or timeless is best when it comes to bathroom design.

Timeless



ANNIE'S THOUGHTS

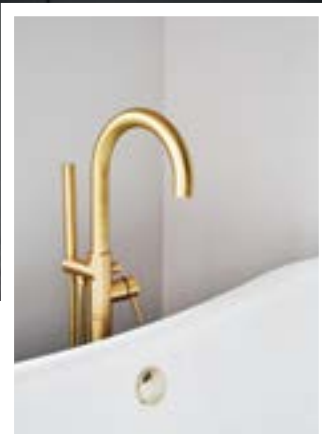
I love creating bathrooms I know will be enduring and although some people might consider timeless style to be a safe option, it doesn't have to be boring or bland. Marble, for example, is an ageless material but it can also be bright and bold and can add interest and colour to a space. Equally, a rolltop bath in copper or tin is a classic choice but can also create a big style statement within your room, making the space anything but dull.

With a timeless design, it is all about focusing on high-quality products that are known for their longevity rather than popular fads, which can quickly date. Investing in quality sanitaryware and classically-shaped brassware will ensure your bathroom will not only stand the test of time but will always remain in style. Brassware finishes such as chrome and brushed nickel might not be the newest on the market, but the beauty lies in how understated they are and the elegance they can bring to the room.

Whilst timeless designs typically use a more neutral colour palette, this also makes them easier to update in the future. For example, you might opt to half-tile your room in a neutral tile and then subtly introduce other colours or patterns using wallpaper or paint on the rest of the walls, which can then be easily changed.



“Whilst trends come and go, a timeless design is something you will love day in, day out.”



Sometimes interior trends can be short-lived so be mindful to take your time and consider all design options before rushing to create the latest look.

For more designer advice, visit ripplesbathrooms.com

“The wall-hung furniture and WC make the room feel bigger than it is and let the floor tiles take centre stage.”

2



3



1

“The black furniture, towel rail and Crittall-style shower screen help to ground the scheme.”

Get the look

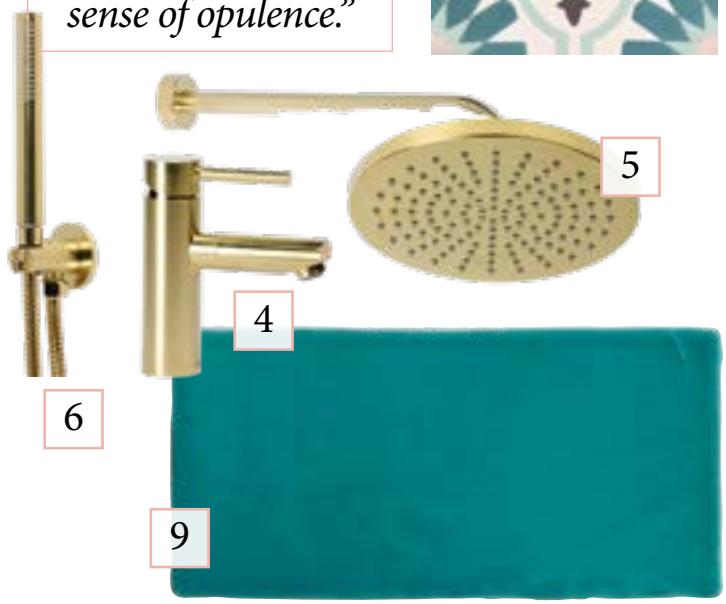
A big fan of colour and pattern, the owner of this home in Hertfordshire enlisted Senior Designer Dena Kirby to help her create a bright and bold en-suite to compliment her recently decorated bedroom.



“The brushed brass brassware used throughout the en-suite really pops against the turquoise tiles and also adds a sense of opulence.”



DENA SAYS:
 “To create a room that really packed a punch, my client and I spent time narrowing down colour choices and settled on a palette of jewel-toned greens and blues. To create a fun focal point, we opted for a bold porcelain floor tile, which featured all the colours we wanted to incorporate into the room. To balance out the busyness of the floor, we chose a plain metro tile for the walls but laid the tiles in an unusual basket weave layout to add interest. By only half tiling the bathroom around the basin, it left lots of room for my client to add fun flourishes with styling and introduce contrasting colours through artwork, which brought the room together.”



- 1 Vanity unit with in-built basin and brushed brass handles, from £929
- 2 Wall-hung unit, from £219
- 3 Mirror & LED light, from £171
- 4 Brushed brass basin mixer, from £391
- 5 Brushed brass shower head & arm, from £534
- 6 Brushed brass handshower & holder, from £291
- 7 Resin shower tray, from £673
- 8 Matt black towel rail, from £300
- 9 Ceramic metro wall tiles, from £57.02m²
- 10 Matt porcelain patterned floor tiles, from £79.20m²
- 11 Shower screen, supplied by client

Head to ripplesbathrooms.com to see the other bathroom spaces we designed for this client.

Bathing rituals from around the world

From Bali to Budapest

Many countries and cultures across the globe have their own unique bathing rituals. For some, it's all about wellness in body and mind. For others, it has religious or symbolic meaning. Whatever your preference, when you finally get that 'me time', take inspiration from these five very different routines and choose elements to suit your own needs and lifestyle.



Japan

East Asia’s bathing rituals are all about respect, care and the utmost precision. With thousands of years of practice, the art of Japanese bathing is very much a meditative state that starts with a dedicated room that simply houses a deep, plunge pool-style tub, often made from a fragrant and antibacterial wood such as Hinoki cypress or teak. There should be a window to look out of while you bathe, an open area with a floor drain and a wooden bucket and stool if you’re going to follow it to the letter. In Japan there are four steps to bathing. First, you sit on the stool and use a bucket to rinse away dirt with hot water scooped from the filled bath. Next, step into and sit in the tub to open up your pores and unwind. The third step involves sitting on the stool once again to scrub with soap and a loofah then finally, rinse off thoroughly and take a long soak in the bath. The Japanese tend to perform this ritual in the early evening before dining to cleanse and refresh the body before a relaxing evening at home. If the thought of a bucket doesn’t appeal, you can use a handshower instead.



Illustration ©Simply_Katy | @simply_katy | simplykaty.co.uk

“Flowers in bath water such as jasmine, frangipani and lotus have natural revitalising and cleansing properties while promoting a sense of peace and wellbeing, leaving you fully refreshed and recharged. For the full authentic experience, drink some tea and use a body scrub then shower off afterwards.”

Matilda West, Designer

The Netherlands & Finland

If you weren't aware of Dutch-born Wim Hof before, then maybe you've seen the BBC show *Freeze the Fear*, where eight celebrities face a series of ice-cold challenges to push their minds and bodies to the limit. The Wim Hof Method® is aimed to help us realise our full potential by connecting with the natural environment and this means embracing cold water to feel its health benefits. These include reduced inflammation, a better immune system, balanced hormones, improved sleep and a release of the feel-good chemicals, endorphins. To achieve this, simply immerse yourself in an ice-cold bath or take regular, short cold showers. The key is to build up the length of time while controlling your breathing, heart rate and blood circulation. Never exceed 15 minutes in an ice bath and work up to this gradually. Cold water immersion can also help with recovery and injury prevention for runners and athletes.



Bali

Anyone who's travelled to Bali has probably seen or had a Balinese flower bath. This tradition of a colourful petal-strewn tub is used as a healing ritual and can often be found in a luxurious spa as part of a restorative and relaxing experience. At home, you can recreate a flower bath with a freestanding tub made from a heat-retaining material such as cast iron, steel or a solid surface and add natural bath oils for a calming and contemplative soak.



Illustration ©Simply, Katy | @simply_katy | simplykaty.co.uk



India

For the Hindu faith, taking a bath is an essential daily ritual, as it's believed that bathing cleanses the body, mind and soul. A morning soak in cold water is said to remove negative energy with 4am (before sunrise) being the optimum time. If this super-early start doesn't appeal, try to fit in a quick one before work and you'll feel the benefits all day long. Add herbal salts or powders for glowing skin and try some meditation or simple contemplation to relax. Even if this just means going through things you need to get done during the day in your head, it can help you to focus and remain calm. In India, water nourishes and purifies the spirit and bathing under flowing water or a waterfall is an ancient practice. The next best thing at home could involve a waterfall bath tap or rain shower, which are both relaxing and invigorating. Finish by applying moisturiser or oils to help balance body and mind.

Hungary

Modern-day rituals are somewhat different in Hungary and bath parties are where it's at! The Hungarian tradition of spas from centuries ago has now evolved into the 'sparty', a club with DJ sets and cocktails set in a geothermal hot spring. Perfect for a Friday or Saturday night, you can create this vibe at home by kitting your bathroom out with feature lighting and Bluetooth speakers to enjoy your very own bathroom party.

“It’s never been more important to focus on physical health and mental wellbeing, and what better way to do so than by creating a spa-like retreat in the comfort of your own home.”

Angie Besant, Designer



Redefining accessibility

A brand-new assortment of accessible bathroom products is redefining the way accessibility is viewed. Keuco's *Axxess* range has been curated in collaboration with internationally renowned design agency **Studio F.A. Porsche** and offers sleek and discreet bathroom products for the older generation and those who are less able. By bringing together pioneers in the areas of bathroom accessories and design, the result is a collection that reimagines accessibility and provides intelligently designed solutions for a bathroom without barriers.



Railing system

Providing support for the shower, bath, basin or WC, this railing system offers enormous support despite its elegant design.

Supporting rails

When folded up, this visually appealing supporting rail lies flat against the wall, providing a discreet and ergonomic solution, which can be used as and when required.



“We wanted to develop accessible bathroom products from a completely new perspective.”

Christian Schwamkrug
Design Director at Studio F.A. Porsche



“Based on the principles of our founder Ferdinand Alexander Porsche, we design products which pair functionality with aesthetics.”

Michael Huber
Head of Global Business
development at Studio F. A. Porsche



Bathroom stool

With a slip-resistant surface, this stool offers a stylish alternative to traditional accessible bathroom stools and has a load capacity of up to 150kg.

The Axess collection is available through all Ripples showrooms. Visit your nearest showroom to discover our full range of accessible bathroom products.



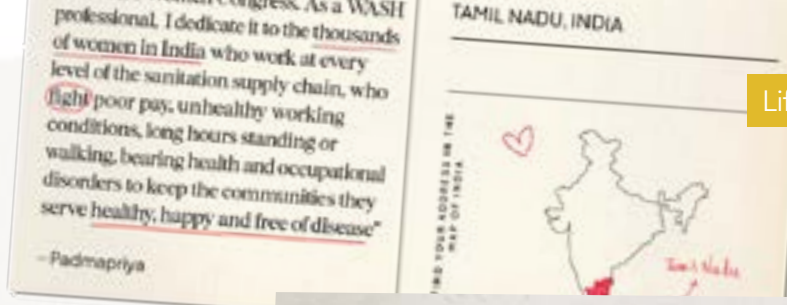




THE GREATEST TOILET IN THE WORLD

In much of the Western world, we are incredibly fortunate to have easy and safe bathroom access, to the point that most of us don't even think about it in our day-to-day lives. This, however, is not the case for millions of poverty-stricken people around the globe who don't have access to clean water, sanitation education or bathroom facilities. Here, we share how we're doing our bit to help change this.





The Cycle is a charity Ripples was first introduced to back in 2010. Their aim? To encourage and implement a cycle of empowerment in three key areas – water, women and world. With a mission to provide safe and sustainable water, sanitation and hygiene services for less fortunate communities across the globe, there was an obvious synergy with Ripples, which is why we decided to partner with them as our chosen charity.

The project that initially caught our eye was the building of toilets in places where people were dying due to poor or no sanitation. These places would have infant mortality rates that were so high, one could be numbed and forget the individual grief felt by each parent who loses a child. The more we at Ripples learnt about the horror these communities face, the more we wanted to raise awareness and of course money to help build more toilets. But these weren't just any toilets; these were arguably the greatest toilets in the world.

THE CYCLE OF CHANGE

The revolutionary *EcoSan* toilet is based on the principle of recovery and recycling of nutrients from human waste to create a valuable resource for agriculture*. Without using water, *EcoSan* toilets transform waste into organic 'humanure', which can then be used to fertilise farmers' crops, in turn reducing reliability on cattle and nourishing the land, which has often suffered years of abuse from harsh fertilisers.

To support the charity to build more of these incredible toilets, in 2013 we organised our first Ripples charity cycle ride from London to Paris, a fundraising



event so successful we repeated it in 2015 and again in 2018. We've also held raffles, showroom fashion shows and local mountain bike challenges and made donations linked to every WC sold. Most recently, a team of Ripples employees, suppliers and friends completed a gruelling cycle ride from Bath to Edinburgh, which took place over four days and over 400 miles. So far, we've raised £85,000 for The Cycle and supported the build of multiple *EcoSan* toilet blocks across India.

The Cycle's latest initiative, *Happy Periods*, is a programme aimed to educate girls, boys, women and men in menstrual, sexual and reproductive health literacy in schools and communities where taboos still suppress people with periods. Right now, 500 million women don't have the things they need to manage their periods safely nor the understanding to free them from embarrassment. In India alone, research has shown that as many as one in five girls leave school when they start their periods due to a lack of toilets and

taboos, perpetuating gender inequality and poverty.

The Happy Periods programme costs just £25 per person; £12.50 for training and £12.50 for the delivery of a new washable, reusable, antimicrobial hygiene sanitary pad that is made from recycled bottles and lasts for five years. For as little as £25, a girl can be kept in school and community mindsets can shift to create a safe environment where all genders can thrive.

To learn more about the charity, visit thecycle.world or if you wish to donate, please scan here. Thank you.



* <https://washmatters.wateraid.org>

Inspiration

At the opposite end of the room we placed the shower, creating two distinct areas for showering and bathing. To make a feature of the sloped ceiling, I designed a shower seat, offering the perfect place for a few minutes of relaxation when showering. Brushed gold brassware was chosen for the shower, to ensure it was in keeping with the rest of the scheme and to create a sense of luxury as well as making a statement against the more neutral tile. The shower area is completed with a 10mm thick semi-frameless shower glass, which exudes quality and blends into the scheme, letting the brassware and tiles do the talking.

To give an authentic cottage feel, my client chose a bold chequerboard floor, which works beautifully with the dark painted bath and brightly coloured brassware. We then paired things back with the Zellige-style tiles in the shower to create a sense of calm and reflect more light around the room. The space was finished with panelling in a neutral tone to tie the whole scheme together.

“The shower thermostat was positioned on entry, so the shower can get to the right temperature before you step in.”

Cosy cottage bathroom



To create a spacious family bathroom in this charming cottage, Senior Designer Kerri Asker transformed what was originally a bedroom into an elegant and traditional space for separate bathing and showering.



A luxurious bath to sit and relax in was high on my client's list of priorities and this existing chimney breast provided the perfect backdrop to place an indulgent painted roll-top bath. Whilst freestanding baths are a great statement piece, they do not offer much surface space, so I incorporated an alcove next to the bath, which is perfect for a glass of champagne and a candle.



To match the bath, we opted for a crosshead basin mixer, which we wall-mounted to keep everything up off the surface.



I wanted to make use of the alcove space either side of the chimney breast so I positioned an offset countertop basin with surface space to the left. The solid surface bowl basin has a lovely smooth texture and really echoes the style of a traditional basin.

Instead of a vanity unit, my client opted for a reclaimed dresser, as it brings a unique warmth and texture to the room and is in keeping with the heritage of the cottage. A bespoke mirror was added above the dresser to fill the whole space and flood the room with light reflected from the window. A picture light centrally positioned above the basin finishes this area perfectly and gives task lighting when required. In the other alcove we positioned a traditional close coupled WC with black wooden seat while the picture light above it creates symmetry with the opposite side.



HOW TO CHOOSE A SHOWER SCREEN

When re-designing a shower space, the screen is an important element, which can have an impact on both the functionality and aesthetic of the room. Here, Showroom Owner & Senior Designer Richard Fox talks through the top things to consider when choosing a shower screen.

FIRST THINGS FIRST

The size of your showering space is very important and will help determine the style of screen you choose. Ideally, you don't want to feel constricted while you're trying to shower - this is a relaxing space where you need room to lift your arms and enjoy the lather rather than worry that you are going to hit your elbows on the glass each time you try to wash your hair! As a general rule, a good starting size for a shower area is 900x900mm but of course this needs to fit comfortably within your room.

PLAYING WITH LAYOUT

An important aspect of a shower room is the way the design flows. You don't want to have to squeeze past your shower enclosure to get to the basin or struggle to open the door without hitting your shower glass. If you have a smaller space or perhaps an awkwardly shaped room, there are a number of different-shaped shower screen options to consider.

SIZE AND SHAPE

Some people like the idea of being encased by steam when they shower and would therefore choose a shower enclosure. There are many shower enclosure shapes available, each offering something a little bit different.

Corner

A square or rectangle enclosure is a timeless choice and works well in bathrooms with a little more floorspace.



Pentagon

Utilising the corners of your bathroom, this design is particularly suited to smaller bathrooms where saving floor space is important.

D-shaped

This style is similar to the pentagon but offers a curved glass front, which softens the overall design. If space isn't an issue, a D-shaped shower enclosure can even be placed in the centre of the wall, rather than a corner, to make it more of a feature within the room.

Three-sided

This option will give you a more spacious showering experience as it's longer than a corner shower but will still make the most of the space you have.

“If you have a shower over your bath, keep splashes to a minimum with a high-quality bath screen. Consider a bi-folding panel to help keep steam in when you're showering and open up your bathing area when you're not.”



Walk-in

Alternatively, you can create a walk-in shower with just a piece of glass. These can look extremely elegant and have no hinges and seals to maintain, however more consideration needs to be given when creating a walk-in shower to protect the room and prevent water from escaping. Water can escape from the open end so choosing a longer piece of glass can help mitigate this... although always double check that you'll be able to get your glass into the property and up the stairs into your room! You will also need to consider the direction the shower is pointing, to help minimise water escaping.



SETTLING ON A STYLE

Once you've chosen the size and shape of your shower screen, consider the style, colour and design. These days there is a huge array of special-finish brassware to choose from and your shower screen is no exception. From brushed bronze to blue, the possibilities are vast.

You can also add flair with patterned glass, which is a fun alternative to clear. You can choose a tinted shade or etched pattern to not only add to the design but to create some privacy too. Alternatively, for a more textured finish, Crittall-style and fluted glass are hugely popular options, whilst we're also seeing some interesting emerging trends such as hexagonal and panelled glass.

By combining all the elements of shape, size, colour and texture you can really personalise your shower screen to make a real statement within your space.

“Don't forget the small details; if you've opted for special-finish brassware throughout your room then choose shower hinges and handles to match for a look that ties together seamlessly.”

Visit your nearest Ripples showroom to discover our shower screen collection.

Life lessons from the bathroom

We asked some of the leading interiors writers to describe their dream bathroom...





PIP RICH
GLOBAL EDITOR IN
CHIEF, LIVINGETC

“Good lighting! I want to be able to see, of course, but also I need a gentle touch to wake me up on winter mornings or a soft glow to help get me in a sleepy mood at night. I need to be able to control the dial, be able to shut my eyes in the tub and instantly unwind.”



AMELIA THORPE
DESIGN AND
INTERIORS JOURNALIST

“Water is an increasingly precious resource, so I’d like my dream bathroom to make the very best use of every drop - a shower head that delivers an invigorating spray with less water, a handshower for ice cold rinsing on hot days, and a supremely comfortable tub that makes a bath a treat.”



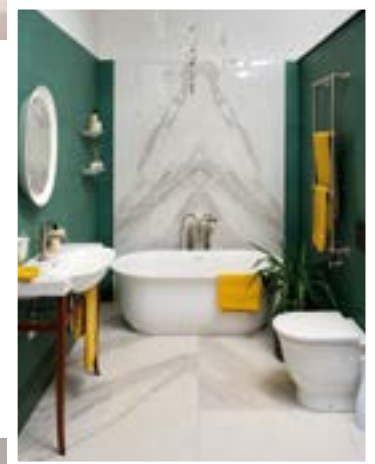
CAROLE ANNETT
INTERIORS EDITOR,
COUNTRY & TOWN HOUSE

“I am a traditionalist when it comes to bathrooms, a big bath and expanse of marble please, perhaps a chequerboard floor or basin surround. Beautiful wall lights either side of a mirror and wallpaper, like in the old days. I don’t want too much tech - an on/off, hot/cold shower control and a Roberts radio will do just fine. And plenty of space for all the paraphernalia I need for a blissful bath, which for me includes Epsom salts, bath oil, a fragrant candle and a book. And a big, warm towel rail (electric so I can have it heated at whim).”



ALI LOVETT
HOUSES EDITOR,
IDEAL HOME

“My dream bathroom would centre around creating a luxurious, spa-like bathing experience - a deep freestanding tub, dimmable lighting and cosy, underfloor heating would all be a must. There would be plenty of tactile textures, a quiet colour palette and not a piece of clutter in sight.”



Visit a showroom

Visit your nearest showroom to discover our product collections, be inspired by our beautiful displays and speak to a specialist bathroom designer about your project.





Want to find out more about the Ripples design service? Scan here to watch our 'How we work' video.



All showrooms are independent franchise companies trading as **Ripples**. For more details on our franchise opportunities, please visit ripplesfranchise.co.uk

Final word

When my parents Roger & Sandra Kyme founded **Ripples** over 35 years ago, their vision was to create beautiful bathroom showrooms that would inspire and excite every visitor. Since our very first showroom opened back in 1988, we've franchised our business and now boast a portfolio of showrooms across the country. The benefit to the visitor of our franchise model is that they're investing in the **Ripples** ethos, experience and heritage whilst also working alongside a local independent business owner who is personally involved in every aspect of their bathroom project.

We pride ourselves on the excellent relationships we have with our network of carefully selected manufacturers, many of which have been with us from day one. Quality is a given and we won't accept below-par brands in our product portfolio, as a well-designed bathroom that consists of quality products is an investment that will last for many years to come.

Personally though, if I had to pick the key USP of **Ripples**, it would have to be our incredibly talented and loyal team of designers. Our designers, some of whom have been with us for nearly 20 years, thrive on creating well thought out and bespoke bathrooms for each and every client. This personal, hands-on collaboration is without doubt the reason our designers love their jobs so much. From the initial showroom visit to seeing the finished bathroom, our designers are heavily invested in ensuring you get the absolute best design solution for your bathroom.

Today **Ripples** is one of the most respected names in the industry and although we continue to grow, we remain committed to offering the same quality, care and personal approach my parents instilled in those early days.



Nicola Crow, Sales Director

Scan here to find out more about Ripples





Ripples




W | ripplesbathrooms.com


T | 0800 107 0700


E | info@ripples.ltd.uk

Visit our website

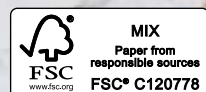


 @ripplesbathrooms

 @ripplesbathroom

 @ripplesbathrooms

Front cover photography ©Adam Carter
Style Guide design ©Nicky Gotobed



Printed with 100%
renewable energy and
vegetable based inks