

2023 UTAH KIDS COUNT[®] DATA BOOK

ACKNOWLEDGEMENTS

Voices for Utah Children wishes to thank and acknowledge the individuals who contributed to the 2023 Utah KIDS COUNT © Data Book.

We would not be able to produce this report without the help of state government agencies who generously share their data with us.

We thank our funders for their generous support of this report. However, the findings and conclusions in this report are solely those of Voices for Utah Children, as are any errors or omissions.

DATA PARTNERS

Riley Finnegan
Enrollment Data
Utah State Board of Education

Rachael Licciardone
Utah Department of Workforce Services

Jessica Payne
Utah Department of Health

EDITING ASSISTANCE

Barbara Muñoz

SPONSORS



R. HAROLD BURTON FOUNDATION

CONNECT WITH US!

Voices for Utah Children

747 East South Temple Suite 100
Salt Lake City, Utah 84102

voices@utahchildren.org
801.364.1182

utahchildren.org



@utahchildren



@utchildren



@utchildren



@utahchildren



@utahchildren



THE KIDS COUNT[®] DATA CENTER

All of the Utah KIDS COUNT[®] indicators (including those not published in this report, as well as data from the National KIDS COUNT[®] project) are housed on the Data Center.

From datacenter.kidscount.org you can:

- Rank states, Utah counties, and the 50 largest cities in the U.S.
- Create a customized data profile for your county.
- Generate your own customized maps and trend lines for use in presentations and publications.
- Publish maps and graphs on your own website or blog, which will be automatically updated when new data is available.
- View and share data quickly and easily anytime and anywhere with the enhanced mobile site for smart phones at mobile.kidscount.org.

We encourage you to use the data to tell the story of your community and bring about positive change. Meeting the health, educational, and social needs of our children is an important task.

This data is a necessary tool for all those working with youth, including community leaders, advocates, media outlets, service providers, and policymakers.



THE ANNIE E. CASEY
FOUNDATION

TABLE OF CONTENTS

Introduction

i

Demographics

1

- State Demographic Data, p. 2
- Household Demographics by County, p. 3
- K-12 Grade Population by County, p. 4
- Race & Ethnicity Demographics by County, p. 5
- Population Data by County, p. 6

Economics

8

- State Economic Data, p. 9
- Economic Data by County, p. 10

Education

12

- State Education Data, p. 13
- Education Data by County, p. 14

Health

16

- State Health Data, p. 17
- Health Data by County, p. 18

Safe Communities

20

- State Safe Communities Data, p. 21





INTRODUCTION

Voices for Utah Children strongly believes that better policy and program decisions are made when quality data is present. Each year, in partnership with the Annie E. Casey Foundation, Voices for Utah Children releases the Utah KIDS COUNT® report, Measuring of Child Well-Being in Utah.

Our hope is to share updated, quality data to help policymakers and all those who work to help children better understand what is happening in Utah and how our communities are changing.

The data collected in this book reveal new challenges and outcomes for Utah.

During 2022 and into 2023, Utah and the nation were affected by record inflation.

Nationally, between 2021 and 2022, median household income fell 2.3%. At the same time, inflation rose 7.8%, the most significant increase in the cost of living since 1981. [i]

Utah is fortunate not to have experienced the same income decrease compared to the national overall. Utah's median income increased 2.1%, but our state also saw a significant increase in free and reduced lunch participants. During the 2022 school year, there were 197,000 student participants; in the 2023 school year, the number of students increased to over 217,000.

Utah's population of those under 18 increased, but the percentage of those under 18 decreased slightly compared to the population over 18. However, those under 18 still make up roughly one-third of Utah's population. According to the data collected from the U.S. Census, Utah is also continuing to diversify. For example, individuals who identified as two or more races increased by nearly 50,000, which is a 1.4% increase.

[i] "Income, Poverty and Health Insurance Coverage in the United States: 2022," Government, United State Census Bureau, September 12, 2023, <https://www.census.gov/newsroom/press-releases/2023/income-poverty-health-insurance-coverage.html>.



This year, the 2023 Utah KIDS COUNT® Data Book presents new data indicators, made possible by the redesigned layout. In the state's demographic data, for example, the median age per county is shared. Utah County had the youngest median age of 25.1, and Wayne County was the oldest at 43.4.

A second data point included is the age dependency ratio. In previous editions, the child dependency ratio was the only segment shared. This data shows areas in the state where children have more adult support, based on the ratio of adults to children, as well as areas where that support is lacking.

Voices for Utah Children hopes that this book continues to serve as a valuable resource for legislators, educators, advocates and all those working to improve the lives of Utah kids.

The data included can help guide policy and program decisions that help Utah's kids succeed and grow to be the adults they wish to become.

Through the data, one can see where and how the state is progressing, and where improvements can be made to help all children prosper.





DEMOGRAPHICS

In 2022, Utah continued to hold the status of the youngest state in the nation, with a median age of 31.9 years. [1] The next closest state in age to Utah is Alaska at 35.6, a nearly four-year difference. [2]

According to the 2021 American Community Survey (ACS) 5-year estimate of the U.S. Census, Utah's total population estimate is 3,231,370, and Utah's under-18 population estimate is 946,063.

The under-18 population remains close to making up a third of Utah's population at 29.30%.

In this year's KIDS COUNT® Data Book, we are including the standard data we collected from the U.S. Census Bureau on the state's demographics pages and share a few new data points from each county. Our aim is to provide a more in-depth look at Utah and its 29 counties.

Two new data indicators we included this year are the median age per county and the age dependency ratio in each county. In past editions, only the child dependency ratio was shared. This year, to highlight the significance of the ratios, we are sharing the two ratios that make up the dependency ratio.

The total ratio is how many children under 18 and adults 65 and older there are to 100 working-age people aged 18 to 64. [3]

The dependency ratio data is noteworthy since the number represents a group of individuals who are not contributing to the tax base workforce and depend on those who are. [4]

Summit County has the lowest dependency ratio at 59.0, with older adults at 20.6 and children at 38.4. This means they have the lowest amount of children and old aged adults relying on the workforce.

The county with the highest ratio is Rich County at 105.7, with a child ratio of 68.3 and older age adults at 37.4. When the dependency ratio is higher, it means there are more people who rely on the working-age group for support. This can put a heavier burden on those who are working.



[1] Kim Bojórquez, "Census: Utah Counties Are among the Youngest in the Nation," Axio Salt Lake City, June 26, 2023, <https://www.axios.com/local/salt-lake-city/2023/06/26/utah-young-us-median-age-county-cache>.

[2] Megan Banta, "There Are Fewer Young Children in Utah than a Decade Ago," The Salt Lake Tribune, June 3, 2023, <https://www.sltrib.com/news/2023/06/03/utah-is-youngest-state-its-getting/>

[3] Britney Heimuli, "Census Data: Utah County Is the Youngest in the U.S. as the Nation Grows Older," Deseret News Publishing Company, June 22, 2023, <https://www.deseret.com/u-s-world/2023/6/22/23769863/census-data-nation-older/>.

[4] Terry Haven, Measures of the Well-Being in Utah, 2020, 2020th ed. (Salt Lake City, Utah, 2020), <https://utahchildren.org/kidscount>.

State Demographic Data



Household

2020 American Community Survey
5-Year Estimates

2021 American Community Survey
5-Year Estimates

	#	%	#	%
Total Population	3,151,239	100.00%	3,231,370	100.00%
Under 5 Years	248,602	7.90%	245,639	7.60%
5-9 Years	262,299	8.30%	266,567	8.20%
10-14 Years	263,035	8.30%	272,709	8.40%
15-19 Years	248,689	7.90%	259,821	8.00%
Under 18 Years	927,569	29.40%	946,063	29.30%
Total Households	1,003,345	100.00%	1,033,651	100.00%
Family Households	746,286	74.38%	763,353	73.85%
Married Couple Family	611,370	2.89%	624,878	60.45%
Married Couple, with own children under 18	398,128	5.48%	303,616	29.37%
Male Households, no spouse and children present	44,672	4.45%	46,610	4.51%
Male Households (no spouse), with own children under 18	22,404	2.23%	22,616	2.19%
Female Households, no spouse and children present	90,244	8.99%	91,865	8.89%
Female Households (no spouse), with own children under 18	47,762	4.76%	48,216	4.66%

Race & Ethnicity

2020

2021

White	2,682,881	85.14%	2,704,561	83.70%
Hispanic or Latino, can be any race	446,067	14.16%	465,832	14.42%
American Indian or Alaskan Native	33,222	1.05%	33,242	1.03%
Asian	73,190	2.32%	75,530	2.34%
Black or African American	38,059	1.21%	38,545	1.19%
Native Hawaiian and Other Pacific Islander	29,450	0.93%	29,086	0.90%
Two or More Races	133,651	4.24%	182,258	5.64%
Some other Race	160,786	5.10%	168,048	5.20%

Age Dependency Ratio

2021 ACS 5 Year Table S0101

2021

Old-age Ratio	18.6
Child Ratio	49.10

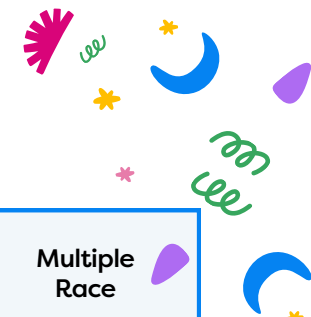
Household Demographics by County

County	Total Households		Family Households		Married Couple Households no children		Male Households with no spouse & children under 18		Female Households with no spouse & children under 18	
	#	%	#	%	#	%	#	%	#	%
Beaver	2,126		1,719	80.86%	1,528	71.87%	94	4.42%	39	1.83%
Box Elder	18,194		13,949	76.67%	11,636	63.96%	480	2.64%	715	3.93%
Cache	40,362		31,001	76.81%	25,915	64.21%	617	1.53%	2,118	5.25%
Carbon	7,762		5,179	66.72%	4,086	52.64%	200	2.58%	352	4.53%
Daggett	197		121	61.42%	116	58.88%	3	1.52%	2	1.02%
Davis	109,899		86,923	79.09%	72,661	66.12%	2,141	1.95%	5,528	5.03%
Duchesne	6,223		4,778	76.78%	3,882	62.38%	119	1.91%	302	4.85%
Emery	3,450		2,586	74.96%	2,178	63.13%	81	2.35%	170	4.93%
Garfield	1,823		1,293	70.93%	1,123	61.60%	6	0.33%	74	4.06%
Grand	4,271		2,662	62.33%	2,100	49.17%	36	0.84%	307	7.19%
Iron	17,736		12,827	72.32%	10,572	59.61%	399	2.25%	942	5.31%
Juab	3,500		2,877	82.20%	2,370	67.71%	74	2.11%	193	5.51%
Kane	3,006		1,779	59.18%	1,510	50.32%	43	1.43%	100	3.33%
Millard	4,204		3,306	78.64%	2,782	66.18%	155	3.69%	218	5.19%
Morgan	3,504		3,127	89.24%	2,869	81.88%	76	2.17%	82	2.34%
Piute	538		351	65.24%	313	58.18%	0	0.00%	0	0.00%
Rich	661		540	81.69%	486	73.52%	0	0.00%	39	5.90%
Salt Lake	399,584		273,943	68.56%	215,179	53.85%	9,130	2.28%	19,373	4.85%
San Juan	4,438		3,331	75.06%	2,439	54.96%	132	2.97%	272	6.13%
Sanpete	8,612		6,419	74.54%	5,761	66.90%	152	1.76%	194	2.25%
Sevier	7,250		5,442	75.06%	4,647	64.10%	118	1.63%	289	3.99%
Summit	13,475		9,978	74.05%	8,506	63.12%	398	2.95%	612	4.54%
Tooele	21,347		17,496	81.96%	14,140	66.24%	605	2.83%	1,225	5.74%
Uintah	11,227		7,868	70.08%	6,414	57.13%	192	1.71%	531	4.73%
Utah	179,387		145,447	81.08%	125,442	69.93%	2,988	1.67%	6,393	3.57%
Wasatch	10,641		8,142	76.52%	7,368	69.24%	76	0.71%	344	3.23%
Washington	61,377		45,607	74.32%	39,253	63.95%	765	1.25%	2,493	4.06%
Wayne	1,055		851	80.66%	718	68.06%	6	0.57%	41	3.89%
Weber	87,802		63,811	72.68%	48,884	55.68%	3,530	4.02%	5,265	6.00%

Source: 2021 American Community Survey 5-year.

K-12 Grade Population by County

School Year 2022-2023



County	White		Hispanic		American Indian		African American/Black		Asian		Pacific Islander		Multiple Race	
	#	%	#	%	#	%	#	%	#	%	#	%	#	%
Beaver	1,193	78.75%	270	17.82%	12	0.79%	4	0.26%	3	0.20%	11	0.73%	22	1.45%
Box Elder	11,150	84.37%	1,607	12.16%	68	0.51%	55	0.42%	51	0.39%	43	0.33%	241	1.82%
Cache	21,911	78.70%	4,182	15.02%	226	0.81%	269	0.97%	356	1.28%	241	0.87%	656	2.36%
Carbon	3,096	82.06%	560	14.84%	41	1.09%	12	0.32%	7	0.19%	6	0.16%	51	1.35%
Daggett	164	92.66%	6	3.39%	3	1.69%	0	0.00%	0	0.00%	0	0.00%	4	2.26%
Davis	64,617	79.89%	10,165	12.57%	302	0.37%	909	1.12%	966	1.19%	1,067	1.32%	2,855	3.53%
Duchesne	4,253	78.60%	558	10.31%	330	6.10%	23	0.43%	16	0.30%	11	0.20%	220	4.07%
Emery	1,907	89.32%	190	8.90%	9	0.42%	3	0.14%	2	0.09%	2	0.09%	22	1.03%
Garfield	1,054	84.59%	121	9.71%	36	2.89%	2	0.16%	5	0.40%	3	0.24%	25	2.01%
Grand	1,061	70.03%	329	21.72%	83	5.48%	3	0.20%	5	0.33%	3	0.20%	31	2.05%
Iron	11,019	82.97%	1,476	11.11%	199	1.50%	77	0.58%	114	0.86%	89	0.67%	306	2.30%
Juab	2,717	90.72%	181	6.04%	8	0.27%	11	0.37%	13	0.43%	17	0.57%	48	1.60%
Kane	1,278	89.25%	90	6.28%	20	1.40%	4	0.28%	6	0.42%	0	0.00%	37	2.58%
Millard	2,515	79.71%	528	16.74%	21	0.67%	5	0.16%	20	0.63%	4	0.13%	62	1.97%
Morgan	3,166	93.62%	113	3.35%	7	0.21%	13	0.39%	8	0.24%	6	0.18%	58	1.72%
Piute	212	80.30%	44	16.67%	0	0.00%	3	1.14%	0	0.00%	0	0.00%	5	1.89%
Rich	418	81.01%	22	4.26%	0	0.00%	0	0.00%	0	0.00%	3	0.58%	10	1.94%
Salt Lake	118,333	58.00%	58,188	28.52%	1,237	0.67%	5,096	2.50%	6,877	3.37%	6,038	2.96%	8,214	4.03%
San Juan	1,040	35.94%	204	7.05%	1,565	54.08%	7	0.24%	4	0.14%	2	0.07%	72	2.49%
Sanpete	4,724	81.10%	877	15.06%	45	0.77%	17	0.29%	9	0.15%	42	0.72%	111	1.91%
Sevier	4,249	90.97%	253	5.42%	86	1.84%	30	0.64%	13	0.28%	38	0.81%	2	0.04%
Summit	5,853	78.25%	1,310	17.51%	12	0.16%	32	0.43%	65	0.87%	4	0.05%	204	2.73%
Tooele	21,209	79.88%	3,622	13.64%	213	0.80%	261	0.98%	372	1.40%	389	1.47%	486	1.83%
Uintah	6,107	79.03%	775	10.03%	550	7.12%	35	0.45%	26	0.34%	27	0.35%	207	2.68%
Utah	115,125	75.27%	26,211	17.14%	530	0.35%	1,105	0.72%	1,517	0.99%	2,154	1.41%	6,303	4.12%
Wasatch	7,282	78.81%	1,641	17.76%	17	0.30%	32	0.35%	34	0.37%	19	0.21%	215	2.33%
Washington	31,352	76.94%	6,467	15.87	478	1.17%	412	1.01%	432	1.06%	555	1.36%	1053	2.58%
Wayne	381	84.48%	43	9.53%	6	1.33%	1	0.22%	2	0.44%	2	0.44%	16	3.55%
Weber	34,829	68.89%	11,932	23.94%	205	0.41%	519	1.04%	406	0.81%	337	0.68%	1603	3.22%

Source: Utah State Board of Education (USBE) Data and Statistics, fall enrollment count 2022-2023 school year (SY 2023)

Race & Ethnicity Demographics by County

County	White Only		Hispanic/Latino can be any race		American Indian/Alaska Native Only		African American/Black Only		Asian Only		Native Hawaiian & Pacific Islander Only		Two or More Races		Some Other Race	
	#	%	#	%	#	%	#	%	#	%	#	%	#	%	#	%
Beaver	6,319	90.76%	859	12.34%	46	0.66%	11	.16%	0	0.00%	11	0.16%	255	3.66%	320	4.60%
Box Elder	51,994	91.39%	5,511	9.69%	391	0.69%	307	0.54%	509	0.89%	116	0.20%	2,350	4.13%	1,224	2.15%
Cache	116,875	88.74%	14,336	10.89%	596	0.45%	813	0.62%	2,452	1.86%	518	0.39%	6,429	4.88%	4,020	3.05%
Carbon	18,271	90.41%	2,752	13.62%	107	0.53%	274	1.36%	96	0.48%	66	0.33%	969	4.80%	425	2.10%
Daggett	521	92.38%	21	3.72%	3	0.53%	1	0.78%	0	0.00%	0	0.00%	28	4.96%	11	1.95%
Davis	316,548	88.22%	36,634	10.21%	1,452	0.40%	4,395	1.22%	6,501	1.81%	2,516	0.70%	20,768	5.79%	6,651	1.85%
Duchesne	17,451	88.80%	1,648	8.39%	784	3.99%	37	0.19%	70	0.36%	87	0.44%	648	3.30%	574	2.92%
Emery	9,494	96.49%	640	6.50%	66	0.67%	7	0.07%	0	0.00%	38	0.39%	225	2.29%	9	0.09%
Garfield	4,680	90.19%	313	6.18%	217	4.29%	6	0.21%	1	0.02%	29	0.57%	53	1.05%	75	1.48%
Grand	8,685	90.19%	1,013	10.52%	353	3.67%	1	.01%	147	1.53%	53	1.59%	238	2.47%	153	1.59%
Iron	50,277	90.04%	5,186	9.29%	998	1.79%	392	0.70%	552	0.99%	117	0.21%	2,337	4.19%	1,166	2.09%
Juab	10,705	91.90%	656	5.63%	147	1.26%	25	0.21%	37	0.32%	1	0.01%	460	3.95%	273	2.34%
Kane	6,969	91.28%	244	3.20%	350	4.58%	26	0.34%	84	1.10%	24	0.31%	80	1.05%	102	1.34%
Millard	11,122	86.49%	1,634	12.71%	150	1.17%	33	0.26%	184	1.43%	19	0.15%	462	3.59%	890	6.92%
Morgan	11,547	94.47%	362	2.98%	30	0.25%	82	0.67%	28	0.23%	60	0.49%	220	1.81%	195	1.60%
Piute	1,709	94.47%	82	4.53%	0	0.00%	5	0.28%	0	0.00%	0	0.00%	60	3.59%	35	1.93%
Rich	2,257	90.03%	220	8.78%	0	0.00%	0	0.00%	1	0.04%	0	0.00%	177	7.06%	72	2.87%
Salt Lake	891,400	75.97%	220,327	18.78%	10,356	0.88%	22,208	1.89%	48,140	4.10%	17,952	1.53%	76,210	6.50%	107,065	9.12%
San Juan	7,032	49.17%	875	5.99%	6,893	47.18%	45	0.31%	35	0.24%	0	0.0%	487	3.33%	118	0.81%
Sanpete	24,761	87.01%	2,719	9.55%	169	0.59%	269	0.95%	206	0.72%	164	0.58%	624	2.19%	2,265	7.96%
Sevier	20,054	93.40%	1,153	5.37%	222	1.03%	131	0.61%	82	0.38%	86	0.40%	460	2.14%	436	2.03%
Summit	37,488	88.93%	4,668	11.07%	159	0.38%	306	0.73%	693	1.64%	60	0.14%	2,121	5.03%	1,329	3.15%
Tooele	62,578	87.72%	9,365	13.13%	270	0.38%	651	0.91%	488	0.68%	272	0.38%	4,657	6.53%	2,424	3.40%
Uintah	30,319	85.43%	3,059	8.62%	2,362	6.66%	188	0.53%	254	0.72%	12	0.03%	1,871	5.27%	482	1.36%
Utah	571,530	88.16%	79,058	12.20%	3,453	0.53%	4,244	0.65%	9,130	1.41%	5,066	0.78%	36,619	6.65%	18,223	2.81%
Wasatch	31,079	91.33%	4,690	13.78%	50	0.15%	168	1.86%	633	1.86%	4	0.01%	1,498	4.40%	596	1.75%
Washington	157,520	89.23%	19,330	10.95%	1,894	1.07%	1,167	0.66%	1,637	0.93%	1,158	0.66%	6,692	3.79%	6,465	3.66%
Wayne	2,443	97.72%	155	6.20%	15	0.60%	0	0.00%	0	0.00%	0	0.00%	37	1.48%	5	0.20%
Weber	222,933	85.95%	48,322	18.63%	1,709	0.66%	2,753	1.06%	3,570	1.38%	657	0.25%	15,323	5.91%	12,445	4.80%

Source: 2021 American Community Survey 5-year.

Population Data by County

County	Population Estimate	Population Estimate Under Age 5 Years		Population Estimate Under Age 18		Population Age Dependency Ratio		Population Median Age
	#	#	%	#	%	Over 65	Child	Years
Beaver	6,962	645	9.3%	2,323	33.4%	27.2	63.7	32.4
Box Elder	56,891	4,388	7.7%	17,948	31.5%	22.5	56.5	32.9
Cache	131,703	10,639	8.1%	38,876	30.3%	15.7	50.2	25.5
Carbon	20,208	1,306	6.5%	5,319	26.3%	31.7	47.1	37.5
Daggett	564	26	5.0%	187	33.2%	33.7	66.3	38.7
Davis	358,831	28,512	7.9%	114,373	31.9%	17.3	54.9	31.6
Duchesne	19,651	1,719	8.7%	6,600	33.6%	21.9	61.6	32.5
Emery	9,839	601	6.1%	2,837	28.8%	31.5	53.3	37.9
Garfield	55,839	324	6.4%	1,194	23.6%	42.7	44.1	41.7
Grand	9,630	468	4.9%	1,881	19.5%	33.9	32.5	41.4
Iron	55,839	4,065	7.3%	15,951	28.6%	22.0	48.8	29.5
Juab	11,648	985	8.5%	4,016	34.5%	23.2	64.8	30.0
Kane	7,635	387	5.1%	1,647	21.6%	39.9	38.5	42.5
Millard	12,860	987	7.7%	4,054	31.5%	32.9	61.2	34.4
Morgan	12,162	902	7.4%	4,281	35.2%	22.0	66.2	31.5
Piute	1,809	66	3.6%	321	17.7%	53.9	33.2	49.4
Rich	2,507	205	8.2%	832	33.2%	37.4	68.3	34.0
Salt Lake	1,173,331	83,199	7.1%	315,368	26.9%	17.6	43.2	33.2
San Juan	14,610	1,055	7.2%	4,353	29.8%	25.7	53.3	33.6
Sanpete	28,458	1,714	6.0%	7,200	25.3%	22.7	41.6	33.6
Sevier	21,471	1,512	7.0%	6,267	29.2%	30.1	53.6	36.3
Summit	42,156	2,912	8.2%	10,174	24.1%	20.6	38.4	40.6
Tooele	71,340	5,462	9.1%	23,051	32.3%	14.9	54.9	31.9
Uintah	35,488	2,912	8.2%	11,566	32.6%	19.2	57.6	32.2
Utah	648,265	58,690	9.1%	215,004	33.2%	12.9	56.0	25.1
Wasatch	34,028	2,616	7.7%	10,561	31.0%	20.7	54.3	34.5
Washington	176,533	10,978	6.2%	45,612	25.8%	40.7	49.0	38.2
Wayne	2,500	153	6.1%	587	23.5%	42.1	43.6	43.4
Weber	259,390	18,996	7.3%	72,680	28.0%	19.3	46.4	33.1

Source: 2021 American Community Survey 5-year.



DEMOGRAPHICS

Sources & Definitions

The primary source for all the following estimates and definitions are from the U.S. Census Bureau.

Source: <https://www.census.gov/en.html>

Demographics Data

U.S. Census Bureau, 2016-2020 American Community Survey 5-Year Estimates.

Dependency Ratio

The following definition was taken directly from the US Census Bureau:

A population's dependency ratio, also known as the age dependency ratio and the total dependency ratio, is the combined child population (people under age 15) and elderly population (people ages 65 and above) per 100 people ages 15-64 (people "of labor force age").

The youth dependency ratio is the number of people under age 15 per 100 people ages 15-64. The elderly, or old age, dependency ratio is the number of people 65 and over per 100 people 15-64. Dependency ratios are also referred to as support ratios.

Source: <https://www.census.gov/glossary/?term=Dependency+ratios>

Households

A household includes all the people who occupy a housing unit (such as a house or apartment) as their usual place of residence. A household includes the related family members and all the unrelated people, if any, such as lodgers, foster children, wards, or employees who share the housing unit. A person living alone in a housing unit, or a group of unrelated people sharing a housing unit such as partners or roomers, is also counted as a household.

The count of households excludes group quarters. There are two major categories of households, "family" and "nonfamily." Household is a standard item in Census Bureau population tables.

Family Household

A family includes a householder and one or more people living in the same household who are related to the householder by birth, marriage, or adoption.

All people in a household who are related to the householder are regarded as members the householder's family. A family household may contain people not related to the householder, but those people are not included as part of the householder's family in census tabulations.

Thus, the number of family households is equal to the number of families, but family households may include more members than do families. A household can contain only one family for purposes of census tabulations. Not all households contain families since a household may comprise a group of unrelated people or one person living alone.

Own Children

A child under 18 years old who is a son or daughter by birth, marriage (a stepchild), or adoption. For 100 percent tabulations, own children consist of all sons/daughters of householders who are under 18 years of age. For sample data, own children consist of sons/daughters of householders who are under 18 years of age and who have never been married, therefore, numbers of own children of householders may be different in these two tabulations.

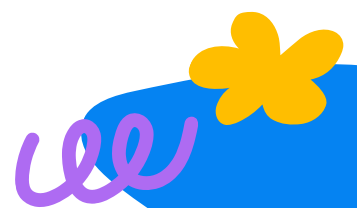
Small Area Income and Poverty Estimates (SAIPE)

Census Bureau program that prepares mathematical model-based estimates of selected characteristics of the United States, states, and school districts.

USBE Data and Statistics

Fall Enrollment by Grade Level and Demographic, October 1, 2022, School Year 2023.

Source: <https://www.schools.utah.gov/data/reports?mid=1424&tid=4>.





ECONOMICS

In 2023, Utah continued forward with economic success. Utah teens are increasingly contributing to the employment numbers.

Data shows that 16- to 19-year-olds comprise seven percent of the state's workforce, compared to the national average of only three percent. [5]

The inflation woes that have affected the U.S. economy were felt in Utah, but according to the data shared at the end of 2023, not to the same extent.

In January of 2023, nationally the inflation rate was about six percent and dropped slightly above three percent in November of 2023. The Mountain West states, including Utah, saw a significant decline, from above seven percent to below three percent for the same timeframe. [6]

According to Mark Knold, Chief Economist at the Department of Workforce Services (DWS), 2023 ended with continued job growth. Still, the state's low unemployment rate may eventually affect the economy.

Knold indicated that when an economy's labor supply is short, it will affect the potential expansion pace. [7]

Utah's unemployment rate is still below the national rate. The unemployment rate rose in Utah only slightly between August 2022 and August 2023, from 2.0% to 2.5%. Utah added just over 41,000 jobs during the same period. [8]

The U.S. Census Bureau updated the Poverty Threshold for 2022. Nationally, a family of four with two children under the age of 18 is in poverty with an income below \$29,678.

The U.S. Census Bureau releases data on poverty in the United States, the first being the "official" poverty rate. The official definition of poverty is comparing pre-tax income to the threshold, which is adjusted by the family size.

The second poverty measure, the Supplemental Poverty Measure (SPM), examines official poverty measures and accounts for government programs to assist low-income families.

In the 2022 Poverty Report, the U.S. Census reported that the SPM child poverty rate more than doubled from 5.2% in 2021 to 12.4% in 2022 in the U.S. This significant and alarming increase is due in large part to the elimination of the pandemic-era Child Tax Credit enhancement at the end of 2021. [9]

In Utah, child poverty increased by one percent for those under 18 years, and by 1.3% for those under five.

[5] Kyle Forbush, "Why More than Half of Utah's Teens, 16-19, Have Jobs," Salt Lake Tribune, November 27, 2023, <https://www.sltrib.com/amplify-utah/2023/11/27/why-more-than-half-utahs-teens-16/>.

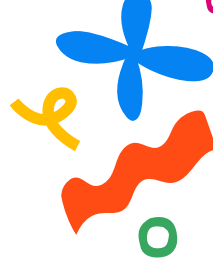
[6] Art Raymond, "A Year of Economic 'Resilience' for Utah, and the Nation, as 2023 Draws to a Close," Deseret News Publishing Company, December 28, 2023, <https://www.deseret.com/2023/12/28/24007946/a-year-of-economic-resilience-for-utah-and-the-nation-as-2023-draws-to-a-close/>.

[7] Mark Knold, "Utah's Employment Summary: December 2023" (Utah: Department of Workforce Services, January 19, 2024), <https://jobs.utah.gov/wi/update/press/>.

[8] Mark Knold, "Utah's Employment Summary: August 2023" (Utah, September 15, 2023), <https://jobs.utah.gov/wi/update/press/>.

[9] Emily A. Shrider and John Creamer, "Poverty in the United States: 2022," Government (Washington, D.C.: United States Census Bureau, September 2023), <https://www.census.gov/library/publications/2023/demo/p60-280.html>.

State Economic Data



Living Below the Poverty Line	2021	2022
Family of Four	\$27,479	\$29,678

	2020	2021
Median Household Income	\$77,785.00	\$79,449.00

Total Population in Poverty	2020		2021	
<i>U.S. Census Small Area Income & Poverty Estimates (SAIPE)</i>	#	%	#	%
All Persons	234,666	7.30%	286,086	8.70%
Under 18 Years	68,900	7.50%	79,258	8.50%
5-17 Years	45,054	6.70%	52,922	7.60%
Under 5 Years of Age	20,230	8.50%	22,873	9.80%

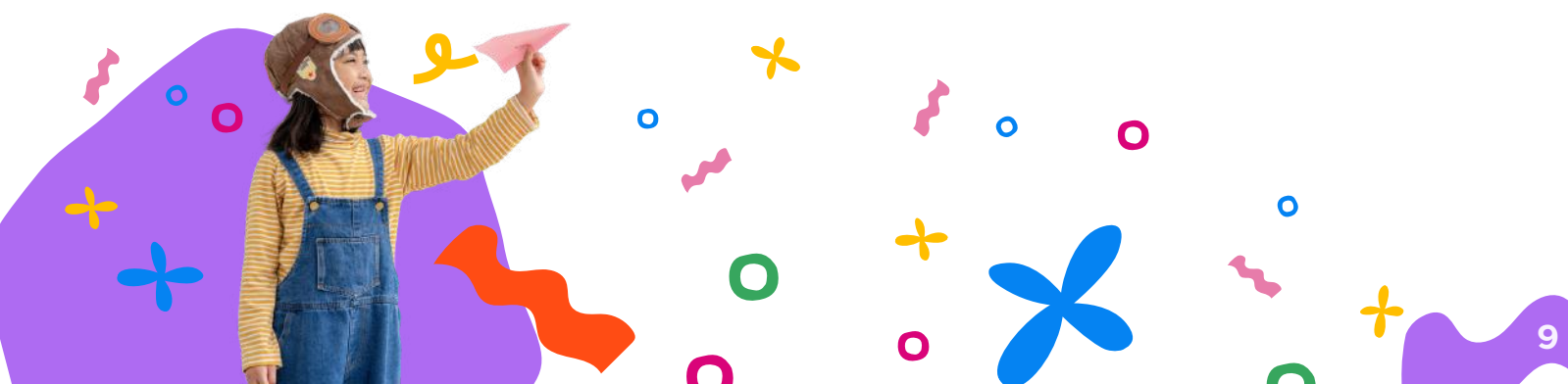
Intergenerational Poverty (IGP)	SEPT 2022	SEPT 2023
Number of IGP - Adults	58,519	67,008
Number of IGP - Children	62,002	67,649

Participation in Work Support Programs	AUG 2022	AUG 2023
Households Receiving Food Stamps (SNAP)	75,013	79,458
Households Receiving TANF	2,030	2,150

	#	%	#	%
Unemployment Rates	35,520	2.00%	45,782	2.50%

Labor Force	2021	
<i>ACS 5YR Table B23008</i>	#	%
Children Under 6 with All Parent in Labor Force	154,229	53.30%

<i>The Annie E. Casey Foundation KIDS COUNT® Data Center</i>		
Children in Low-Income Working Families	192,000	20.00%



Economic Data by County

County	SAIPE 2021 Population in Poverty		SAIPE 2021 Population in Poverty Age Birth to 17 years		Children under 6 with all Parents in the Labor Force 2021 ACS 5Yr		Households receiving SNAP/TANF August 2023 Utah DWS		Unemployment August 2023 Utah DWS		SAIPE 2021 Median Household Income
	#	%	#	%	#	%	SNAP	TANF	#	%	\$
Beaver	662	8.7%	290	13.0%	546	67.5%	226	4	99	3.3%	\$59,437
Box Elder	4,712	8.0%	1,469	8.1%	2,769	52.4%	1,376	36	756	2.6%	\$69,538
Cache	14,719	11.0%	3,633	9.0%	6,323	50.8%	2,342	58	1,677	2.3%	\$69,670
Carbon	31,166	15.9%	910	17.8%	767	47.3%	1,371	31	333	3.8%	\$50,503
Daggett	70	7.5%	24	11.2%	8	26.7%	17	0	16	3.7%	\$57,400
Davis	23,286	6.4%	7,175	6.4%	17,794	51.8%	6,122	188	4793	2.5%	\$93,260
Duchesne	2,555	13.1%	1,045	16.3%	897	41.3%	888	31	248	3.0%	\$63,327
Emery	1,173	11.8%	414	14.8%	451	57.5%	354	7	145	3.1%	\$62,257
Garfield	490	9.9%	164	15.0%	237	58.7%	109	2	168	5.6%	\$56,943
Grand	1,061	11.1%	327	16.8%	442	75.0%	321	7	268	3.7%	\$52,645
Iron	7,906	13.3%	2,432	14.5%	2,402	49.1%	1,996	38	774	2.6%	\$61,421
Juab	1057	8.8%	437	10.8%	696	60.3%	268	9	158	2.4%	\$77,036
Kane	729	9.4%	231	12.5%	320	70.8%	150	2	114	2.7%	\$62,311
Millard	1,322	10.2%	559	13.7%	622	51.4%	328	11	158	2.4%	\$68,131
Morgan	564	4.5%	197	4.6%	525	46.5%	62	2	133	2.1%	\$111,472
Piute	219	15.1%	76	25.3%	32	41.6%	48	0	26	5.0%	\$50,768
Rich	208	8.0%	84	11.3%	97	42.5%	25	0	30	2.4%	\$70,815
Salt Lake	103,046	8.8%	26,821	8.9%	57,093	59.5%	33,275	954	18,986	2.7%	\$80,676
San Juan	3,832	26.8%	1,254	30.4%	737	58.4%	1,118	7	236	4.1%	\$48,071
Sanpete	3,129	11.7%	826	12.0%	1,047	49.8%	674	10	398	2.8%	\$62,098
Sevier	2,107	9.7%	750	12.4%	813	47.8%	881	22	290	2.7%	\$68,303
Summit	2,509	5.8%	571	5.8%	1,643	71.0%	235	11	692	2.5%	\$124,354
Tooele	4,289	5.6%	1,428	6.0%	3,640	56.9%	2,161	92	1,097	2.7%	\$90,591
Uintah	4,285	11.9%	1,729	15.2%	1,576	43.7%	1,327	44	499	3.4%	\$64,105
Utah	54,542	8.1%	13,609	6.2%	30,569	43.8%	9,989	237	9,426	2.6%	\$86,597
Wasatch	1,751	4.9%	655	6.2%	1,704	57.2%	274	12	459	2.5%	\$102,206
Washington	17,782	9.4%	4,614	9.9%	6,123	46.4%	4,261	70	2,616	2.9%	\$63,639
Wayne	283	11.1%	88	16.3%	88	51.2%	67	0	69	4.4%	\$57,768
Weber	24,635	9.3%	7,446	10.4%	14,277	64.8%	9,157	265	4,051	2.9%	\$72,348



ECONOMICS

Sources & Definitions

Poverty

The federal poverty threshold for a two-parent household with two children was \$29,678 in 2022. If a family makes less than this amount, they are considered “in poverty.”

Source: U.S. Census Bureau Poverty Thresholds, 2022. [U.S. Census Bureau, 2016-2020 American Community Survey 5-Year Estimates.](https://www.census.gov/data-communication/2022/01/01/2022-poverty-thresholds.html)

Medium Household Income

Median income divides the income distribution into two equal groups, one having incomes above the median and the other having incomes below the median. It includes all income for the entire family.

Sources: U.S. Census Bureau, Small Area Income and Poverty Estimate SAIPE Program.

https://www.census.gov/data-tools/demo/saipe/#/?s_state=49&s_county=&s_district=

Unemployment

Seasonally adjusted unemployment rates.

Sources: Utah Department of Workforce Services. Seasonally Adjusted Unemployment Rates.

<https://jobs.utah.gov/wi/update/une/>

TANF & Food Stamp Cases

The number of cases (households) receiving food stamps or Temporary Assistance for Needy Families (TANF) at any time during the month indicated. A case is counted once even though there may be several individuals in the household.

Source: Utah Department of Workforce Services.

Intergenerational Poverty

Intergenerational poverty is poverty in which two or more successive generations of a family continue in the cycle of poverty and government dependence. Intergenerational poverty does not include situational poverty, which is temporary and traceable to a specific incident or time period.

Source: Utah Department of Workforce Service, Utah’s Tenth Annual Report Intergenerational Poverty Welfare Dependency and Public Assistance Use, 2023.

<https://jobs.utah.gov/e3o/intergenerational/>

Children Under 6 With No Parent in the Labor Force

The share of children under age 6 whose resident parents are not in the civilian labor force. Source: The Annie E. Casey Foundation KIDSCOUNT Data Center.

Source:

<https://datacenter.kidscount.org/data#UT/2/0/char/O>

Children in Low-Income Working Families

The share of own children under age 18 living in families that met two criteria: (1) the family income was less than twice the federal poverty level; (2) at least one parent worked 50 or more weeks during the previous year.

Source: The Annie E. Casey Foundation KIDS COUNT® Data Center.

<https://datacenter.aecf.org/data/tables/10381-low-income-working-families-with-children?loc=46&loct=2#detailed/2/46/false/1095,2048,1729,37/any/20052,20053>



EDUCATION

For the 2022-2023 school year, the Utah State Board of Education (USBE) reports that Utah public schools saw an increase of over 700 students.

Utah students who were chronically absent saw a three percent decrease. The Student Proficiency Results in Utah showed some improvement in the language arts and science but a slight decline in math scores.

The per-pupil spending saw Utah move up in the rankings, but only by one spot and up from dead last.

According to the U.S. Census Bureau, Utah now ranks ahead of Idaho with per-pupil expenditure. [10]

Digging more deeply into the Utah per-pupil spending, the Education Data Initiative website states Utah receives the least amount of any state in Federal dollars per pupil at \$922, and the remainder of Utah's per-pupil expenditure is made from State and local funds of \$8,542 for a total of \$9,480 per student.[11]

Education data can help the public and policymakers understand what Utah students need to succeed in their educational careers.

The data and knowledge will help Utah kids grow and become successful working adults whose success is an investment for Utah's future.



[10] "For Immediate Release: Thursday, May 18, 2023, Public School Spending Per Pupil Experiences Largest Year-to-Year Increase in More Than Decade Press Release Number CB23-TPS.61" (U. S. Census Bureau, May 18, 2023), <https://www.census.gov/newsroom/press-releases/2023/public-school-spending.html>.

[11] Melanie Hanson, "U.S. Public Education Spending Statistics," .org, Education Data Initiative, September 8, 2023, <https://educationdata.org/public-education-spending-statistics>.

State Education Data

Utah Public School Statistics, K-12

Utah State Board of Education

OCT 2022

OCT 2023

Fall Enrollment	673,262	673,979
# of Free or Reduced Lunch Participants	197,034	217,809
% of Free or Reduced Lunch Participants	34.03%	32.3%
Student to Teacher Ratio	21.5	21.2
Student Chronically Absent %	28.7%	25.5%

Children Age 3-4 Not Enrolled in Pre-School

ACS 5-Year

2020

2021

Number	58,030	58,296
Percentage	57.42%	58.20%

Student Proficiency Results for Utah

Language Arts

SY 2021-22

SY 2022-23

All Students	43.6%	44.4%
Economically Disadvantaged Students	27.2%	27.3%

Mathematics

All Students	40.9%	40.4%
Economically Disadvantaged Students	24.4%	23.5%

Science

All Students	44.3%	45.1%
Economically Disadvantaged Students	28.4%	28.8%

Children Under Age 6

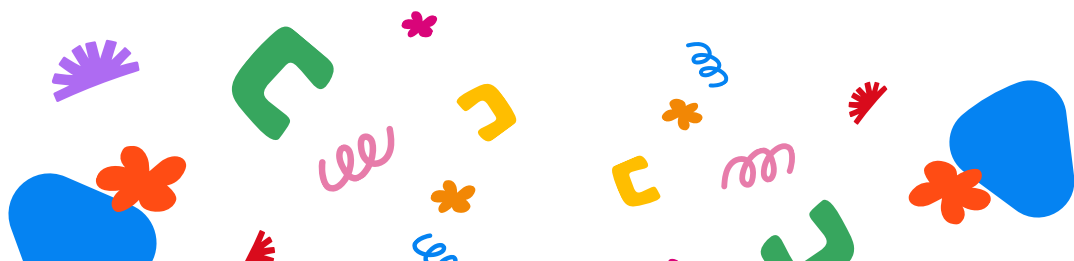
With a Family Member that Read to Them Less Than Four Days Per Week

Annie E Casey Foundation KIDS COUNT® Data Center

YEARS 2019-20

YEARS 2020-21

Number	113,714	112,240
Percent	40.0%	38.0%



Education Data by County

County	Fall Enrollment	Student-Teacher Ratio	Chronically Absent	Free and Reduced Lunch		3-4 Year Olds Not Enrolled in School	
	2023-2024	2023-2024	2023-2024	2023-2024		2021	
	#	S:T	%	#	%	#	%
Beaver	1,514	18.3	20.8%	762	49.4%	117	51.77%
Box Elder	13,199	23.3	32.0%	4,266	31.5%	1,065	63.77%
Cache	3,760	25.6	21.7%	8,278	29.3%	2,531	59.78%
Carbon	3,760	21.5	28.9%	1,882	48.5%	323	59.16%
Daggett	177	9.8	27.4%	39	21.3%	15	100.00%
Davis	80,787	26.5	22.1%	15,910	19.2%	6,889	58.52%
Duchesne	5,402	20.3	30.5%	2,357	42.9%	488	58.51%
Emery	2,121	16.0	39.8%	1,108	51.1%	59	23.89%
Garfield	1,244	19.3	22.7%	491	37.8%	62	54.39%
Grand	1,515	17.1	27.5%	735	46.8%	108	43.37%
Iron	13,237	27.8	20.9%	5,540	39.3%	1,132	64.80%
Juab	2,993	20.7	25.5%	1,012	33.0%	316	71.66%
Kane	1,431	20.4	33.1%	542	36.1%	76	50.67%
Millard	3,155	20.7	18.0%	1,509	46.7%	239	54.57%
Morgan	3,364	21.4	16.0%	335	9.8%	180	54.38%
Piute	264	10.4	20.4%	159	58.0%	17	44.74%
Rich	514	16.2	29.2%	205	38.2%	93	86.92%
Salt Lake	203,809	24.8	25.9%	80,078	37.9%	18,488	53.85%
San Juan	2,896	17.0	31.2%	3,031	98.7%	265	72.60%
Sanpete	5,823	19.3	22.5%	2,975	50.0%	344	57.72%
Sevier	4,663	20.4	33.2%	2,198	46.1%	230	38.92%
Summit	7,482	18.1	16.7%	1,419	18.5%	315	36.84%
Tooele	26,198	34.5	19.3%	6,648	24.8%	1,473	65.38%
Uintah	7,711	26.8	35.2%	3,431	43.0%	864	69.73%
Utah	152,859	27.5	24.3%	38,058	24.2%	15,038	63.00%
Wasatch	9,230	25.2	14.7%	2,387	24.9%	365	33.24%
Washington	40,578	25.7	21.0%	13,340	31.8%	2,626	59.51%
Wayne	451	15.1	28.9%	225	48.4%	20	37.74%
Weber	49,782	24.4	30.3%	18,889	37.0%	4,558	62.01%

Sources: U.S. Census ACS 5 Year (3-4 Year Olds Not Enrolled in School)



EDUCATION

Sources & Definitions

The information directly below comes from the Utah State Board of Education:

Enrollment

Enrollment numbers are for the Fall of each year and represent the number of students enrolled in kindergarten through 12th grade.

Pupil/Teacher Ratio

Pupil/Teacher ratios are based on the total number of students enrolled in kindergarten through 12th grade. Teachers include any person assigned to the school as a “regular classroom teacher.” This excludes preschool teachers and special education teachers, guidance counselors, library specialist, etc. and does not include charter schools.

Free and Reduced Lunch Participation

Data is for kindergarten through 12th grade and represents the percent of the state’s students who are receiving free or reduced lunches. Data is for a point in time enrollment number in October of each year.

Chronic Absence

Of students with at least 45 days in membership, the percentage that were absent for at least 10% of their days in membership. This is a new definition and makes the data in this year’s book not comparable to other year’s data.

Student Proficiency Result for State

Results are comprised of the RISE assessment for grades 3-8 and the Utah Aspire Plus Assessment for grades 9-10.

Source: Utah State Board of Education, Data Gateway, Assessment Student Proficiency.
<https://datagateway.schools.utah.gov/>

Children Ages Three and Four Not Enrolled in Preschool

The share of children ages three to four not enrolled in school.

Source: U.S. Census Bureau, 2017-2021 American Community Survey 5-Year Estimates. [The share of children ages three to four not enrolled in school.](#)

Children Under Age Six Whose Family Members Read to Them Less than Four Days per Week

Children younger than age six were included if the respondent indicated that family members read to the child less than four days in the past week.

Source: Kids Count® Data Center.
<https://datacenter.kidscount.org/data#UT/2/0/char/O>





HEALTH

In 2022, Utah saw a few health indicators improve and a few others decline. The percentage of pregnant individuals receiving prenatal care decreased.

The rate of two-year-olds receiving recommended immunizations also decreased, dropping nearly a percentage point. Utah's birth rate also declined.

In 2021, the birth rate was 13.97 per 1000; in 2022, it was 13.44 per 1000; numerically, it was close to a thousand fewer births in 2022 at 945. [12]

Providing Utah children access to health care should be a top priority for all of us, especially policymakers. That is why Voices for Utah Children successfully advocated for SB217: Children's Health Coverage Amendment, which passed during Utah's 2023 General Legislative Session.

SB217 is one piece of the puzzle to providing health coverage to every child in Utah. With the passage of this bill, the newly created State CHIP program will

provide eligible immigrant children with comprehensive health coverage. [13]

Children need access to recommended immunizations to help prevent avoidable illnesses. However, Utah has faced challenges in achieving high vaccination rates for certain vaccines, such as the HPV vaccine.

The HPV vaccine helps to prevent several HPV-related cancers in both boys and girls. The dose amounts needed to offer protection are determined depending on a child's age.

For age groups nine to 14, children require two doses at six to 12 months apart; for 15 years or older, three doses over six months are recommended. Data collected from the Utah Department of Health & Human reports vaccination rates in two groups: group one is aged 11-12 and group two is aged 13-15.

In 2022 in Utah, only 35.3% of group one received one or more doses and only 11.8% were up to date for the recommended dose. In group two, 66.3% had received one dose and 40.7% had received the recommended dose. [14]

[12] "Query Results for Birth Query Module for Utah Counties and Local Health Districts - Birth Rate" (Utah: Public Health Indicator Based Information System (IBIS), March 14, 2024), <https://ibis.health.utah.gov/ibisph-view/query/result/birth/BirthPopCnty/BirthRate.html#>.

[13] "New State CHIP Program: A Win for Utah Children and Families," October 8, 2023, <https://utahchildren.org/newsroom/speaking-of-kids-blog/item/1217-new-state-chip-program-a-win-for-utah-children-and-families>; "Voices for Utah Children-Issues: Children's Health," Non-profit Organization, Voices for Utah Children, 2020 Voices for Utah Children 2010, <https://utahchildren.org/issues/childrens-health>.

[14] "Human Papillomavirus for Healthcare Providers," State Government, Utah Department of Health & Human Services, March 18, 2023, <https://cancerutah.org/healthcare-professionals/hpv/#:~:text=Utah%20Cancer%20Control%20Program%20Recommendation,make%20appointments%20before%20they%20leave.>

The key to asterisks found in some county health data. IBIS data from the Utah Department of Health
*- Data was suppressed due to the small number, which made the relative error greater than 30%.
**- Data suppressed due to the relative standard error is greater than 50%.

State Health Data

Public Health

Public Health Indicator Based Information System (IBIS)
Utah's Public Health Data Resource

	2021		2022	
	#	%	#	%
Receiving Prenatal Care	35,918	77.15%	33,249	72.88%
Low Birth Weight Babies (less than 2,500 grams)	16,971	7.25%	16,966	7.33%
	#	Rate	#	Rate
Infant Mortality (per 1,000 live births)	1,257	5.35	1,201	5.17
Teen Birth Rate (per 1,000 females age 15-17)	1,672	5.53	1,509	3.79
Injury Death (per 100,000 ages 0-19)	802	19.55	803	15.4
Intentional Self-Harm (Suicide) Rate (per 100,000 ages 10-17)	188	11.13	185	8.43
		%		%
2-Year Olds Immunized		72.40%		71.50%

Uninsured Children Under 19

2021 and 2022 ACS 1-Year Table C27001

	2021		2022	
	#	%	#	%
	79,037	7.92%	72,186	7.20%

Mental Health

National Survey of Children's Health, Health Resource and Services Administration, Maternal and Children Health Bureau

	2021		2022	
	% Received Treatment	% Didn't Receive Treatment	% Received Treatment	% Didn't Receive Treatment
Children ages 3-17 with a mental/behavioral condition receive treatment or counseling.	42.1%	57.9%	47.1%	52.9%

Dental Health

The Annie E. Casey Foundation KIDS COUNT® Data Center

	2019-2020	2020-2021
	%	%
Children Receiving Preventive Dental Care in the Past Year (Under 18)	84.0%	80.0%

National Survey of Children's Health, Health Resource and Services Administration, Maternal and Children Health Bureau and Children Health Bureau

	2021	2022
	%	%
Children, aged 1-17, who have Decayed Teeth or Cavities in the Past Year	12.50%	13.30%



Health Data by County

County	Receiving Prenatal Care First Trimester 2023		Low Birth Weight-Less Than 2,500 grams 2018-2022		Infant Mortality-per 1,000 live births 2018-2022		Teen Birth rate per 1,000 females aged 15-17 2018-2022		Uninsured Children Under 19 2021		Percentage 2-Years Olds Immunized † 2022
	#	%	#	%	Rate	%	Rate	#	#	%	%
Beaver	36	75.00%	14	6.25%	**	**	11.47*	10*	128	5.3%	63.7%
Box Elder	287	59.92%	72	3.26%	2.68*	11*	3.93	29	1,311	7.0%	72.2%
Cache	1,740	79.27%	583	5.35%	3.93	41	3.01	49	1,517	3.5%	77.0%
Carbon	185	73.41%	72	5.42%	4.24*	5*	6.47	15	270	4.5%	54.6%
Daggett						0			0	0.00%	40.0%
Davis	2,159	76.16%	799	6.41%	5.12	127	2.09	103	5,759	4.8%	73.0%
Duchesne	281	62.31%	148	5.94%	2.62*	4*	5.66	14	732	10.7%	64.6%
Emery	**	**	**	**	8.40*	5*	4.57*	6*	120	4.0%	48.9%
Garfield	18	72.00%	5*	3.18%	18.18*	5*	**	**	185	13.8%	64.2%
Grand	54	63.53%	17	4.38%	10.22*	5*	4.68*	4*	247	12.6%	54.1%
Iron	681	79.93%	211	5.13%	5.70	23	3.41	24	1,113	6.5%	67.0%
Juab	195	79.92%	36	3.94%	7.22*	7*	3.22*	5*	250	6.0%	61.4%
Kane	7*	50.00%	**	**	**	**	**	**	87	5.1%	45.0%
Millard	89	70.63%	26	4.13%	**	**	2.94*	5*	572	13.5%	66.0%
Morgan	6*	75.00%	**	**	5.84*	4*	**	**	236	5.2%	68.2%
Piute			**	**		0			5	1.5%	53.8%
Rich						0			117	13.8%	71.0%
Salt Lake	13,001	71.20%	7,679	8.15%	5.46	421	5.27	676	27,663	8.4%	73.5%
San Juan	99	71.22%	18	2.59%	**	**	6.81	13	600	12.8%	49.4%
Sanpete	176	64.47%	50	3.59%	6.33	12	4.1	17	690	8.7%	62.3%
Sevier	185	84.47%	45	3.64%	4.27*	6*	4.95	14	461	7.0%	57.6%
Summit	259	83.28%	55	3.41%	1.96*	4*	1.21*	6*	508	4.7%	68.7%
Tooele	438	77.39%	117	4.60%	7.02	36	3.35	37	1,427	5.9%	66.8%
Uintah	141	56.18%	84	6.17%	10.48	27	6.17	29	1,517	12.5%	53.5%
Utah	8,248	75.56%	3,898	7.09%	4.77	281	2.38	211	14,114	6.2%	72.7%
Wasatch	182	82.37%	40	3.86%	3.03*	6*	2.47	12	532	4.8%	62.7%
Washington	1,049	58.57%	894	7.60%	4.75	53	3.58	79	6,895	14.4%	62.8%
Wayne					**	**	**	**	99	16.7%	75.0%
Weber	3,291	76.45%	2,101	8.54%	6.12	109	3.79	145	5,031	6.6%	73.1%

Sources: 2023 IBIS data (Receiving Prenatal Care First Trimester), 2018-2022 IBIS (Low Birth Weight-Less Than 2,500 grams, Teen Birth rate per 1,000 females aged 15-17), 2021 ACS 5Yr (Uninsured Children Under 19).

† Turned age two on December 31, 2022

*Data suppressed due to small number, which makes the relative error greater than 30%.

**Data suppressed due to the relative standard error being greater than 50%.

Blank: Data was not provided in the data query.



HEALTH

Sources & Definitions

The information below is from Utah Department of Health and Human Services, Center for Health Data and Informatics, Indicator-Based Information System for Public Health website: <http://ibis.health.utah.gov/>

Prenatal Care

Number and percent of women receiving prenatal care in the first trimester as a percent of all live births. Retrieved dates: 10/24/23.

Low Birth Weight Babies

Number of infants born weighing less than 2,500 grams (about 5.5 pounds) as a percentage of all live births. Retrieved dates: 11/8/22, for year group 2017-2021, and 10/24/23, for year group 2018-2022.

Infant Mortality

An infant death is defined as the death of a live-born infant within one year of birth. Rates are per 1,000 live births. Retrieved dates: 11/8/22, for year group 2017-2021 and 10/24/23, for year group 2018-2022.

Teen Births

Live births to married and unmarried females ages 15 to 17. Rates are per 1,000 females in that age range. Retrieved dates: 11/8/22, for year group 2017-2021 and 10/25/23, for year group 2018-2022.

Injury Deaths

Child injury deaths occur to individuals ages 1-19 due to injuries (accidents, suicides, and homicides). Rates are per 100,000 youth. Retrieved date: 11/8/22 for year groups 2016-2020, and 11/14/22, for year groups 2018-2022.

Intentional Self-Harm (Suicide) Deaths

Crude Rate, deaths per 100,000 ages 10-17. Retrieved date: 11/8/22, for year groups 2016-2020 and 10/30/23, for year groups 2018-2022.

Uninsured Children

Utah's number and percent estimates of children under 19 with no health coverage.

Source: U.S. Census Bureau, 2021 American Community Survey 1-Year Estimates. [https://data.census.gov/table?t=Health+Insurance&g=0400000US49_49\\$0500000&t=id=ACSST1Y2021.S2701](https://data.census.gov/table?t=Health+Insurance&g=0400000US49_49$0500000&t=id=ACSST1Y2021.S2701)

Utah County's number and percent estimates of children under 18 with no health coverage.

Sources: U.S. Census Bureau, 2016-2020 American Community Survey 5-Year Estimates. [https://data.census.gov/table/ACSST5Y2021.S2701?t=Health+Insurance&g=040XX00US49_49\\$0500000](https://data.census.gov/table/ACSST5Y2021.S2701?t=Health+Insurance&g=040XX00US49_49$0500000)

Immunization

It is recommended that all children, by age two, should receive the following vaccines: four doses against diphtheria-tetanus-pertussis (DTP); three against polio; one against measles-mumps-rubella (MMR); three against Hepatitis B; three or four against Haemophilus influenza type B (Hib) (depending on product type received); one against Varicella; and four against PCV. This recommendation is referred to in shorthand as "4:3:1:3:3:1:4."

Source: Utah Department of Health

Mental Health

Children ages 3-17 with a mental/behavioral condition who receive treatment or counseling.

Source: National Survey of Children's Health, Health Resource and Services Administration, Maternal and Children Health Bureau. <https://www.childhealthdata.org/browse/survey/results?q=9988&r=46>

Children Receiving Preventive Dental Visit in the Past Year in Utah

Children under 18 who have seen a dentist at least once for preventive dental care, such as check-ups and dental cleaning, in the past year.

Source: The Annie E. Casey Foundation KIDS COUNT® Data Center

Dental Health

2022 National Survey of Children's Health Outcome Measures 14: Percent of children, age 1-17, who have decayed teeth or cavities in the past year.

Source: National Survey of Children's Health Resources and Services Administration, Maternal and Children Health Bureau. <https://www.childhealthdata.org/browse/survey/results?q=9983&r=46>



SAFE COMMUNITIES

The Safe Communities data provides a look at Utah children’s struggles in the areas of substance use, social and emotional health, physical health and safety, child abuse and neglect, and juvenile justice.

The data provided here is from the 2023 Student Health and Risk Prevention (SHARP) report by the Utah Division of Substance Abuse and Mental Health and Utah Division of Child and Family Services.

The SHARP Survey

The SHARP survey is administered to 6th, 8th, 10th, and 12th graders every two years. In 2023, 35 school districts and 13 charter schools across Utah participated in the survey. The total number of students who participated was down from the 2021 survey.

In 2023, the total number of students who answered the study was 51,890, compared to more than 71,000 students in 2021. The data compare results from 2021 and 2023. New in the 2023 survey is a question to assess social determinants of health with five answers to analyze youth responses. [15]

The 2023 SHARP Survey report lists the results by each grade for each question and has the percentage for all grades. Here we include only the percentage across all grades.

Child Abuse Data

The data presented in the KIDS COUNT® book on child abuse looks at the number of reports the Utah Division of Child and Family Services receives of child abuse and neglect as well as the number of children confirmed as abuse and neglect victims.

When a child and its family become involved with Child Protective Services (CPS), the goal is to assess the safety concern first. From that assessment, a safety plan is developed for the child and to help the parents. [16]

Juvenile Justice

New this year, the Juvenile Justice Data are selected indicators from the Utah Commission on Criminal & Juvenile Justice and the Juvenile Justice Oversight Committee 2022 & 2023 Annual Reports.

The data presented are percentages of Nonjudicial Adjustments Outcomes, successful or unsuccessful, the share of Nonjudicial Adjustments, and the percentage of minority and non-minority youth.

The two final indicators also show the data as percentages between minority and non-minority youth: Juvenile Court Referral and the Percentage of Secure Care.

[15] “Student Health and Risk Prevention 2023,” SHARP Survey (Prevention Need Assessment) Results for State of Utah (Utah: Utah Department of Health & Human Services Office of Substance Use and Mental Health, 2023), <https://sumh.utah.gov/data-reports/sharp-survey/>.

[16] “Division of Child and Family Services Annual Report Fiscal Year 2023 (FY2023),” Annual Report (Utah: Utah Department of Health & Human Services Child & Family Services, Fiscal Year July 1 throughout June 30), <https://dcfs.utah.gov/resources/reports-and-data/>.





State Safe Communities Data

SHARP Survey Results (Self-Reported)

Youth said they had:

	2021	2023
	%	%
Been drunk or high at school	4.30%	4.10%
Carried a handgun	7.30%	7.50%
Carried a gun to school	0.20%	0.30%
Drank and drove	1.30%	1.10%
Sold illegal drugs	1.30%	1.30%
Stolen a vehicle	0.60%	0.90%
Was suspended from school	4.40%	5.70%
Was bullied at school	14.40%	20.30%
Missed school because they felt unsafe	9.20%	12.50%
Considered suicide	17.50%	17.60%
Needs alcohol or drug treatment	3.30%	2.70%
High mental health treatment needs	24.60%	25.00%

Social Determinants of Health

Utah 2023 SHARP PNA Student Survey

One or more people in home lost their job	31.10%
I had to move or change homes in the past year	32.60%
Skipped meals, family didn't have enough funds for food	11.60%
I had difficulty keeping up with schoolwork due to a lack of reliable computer or internet service	21.90%
I did not have a quiet place to study	52.10%

Child Abuse State Data

Utah Division Child and Family Services Annual Reports

	FY 2022	FY 2023
	#	#
Reports of Child Abuse and Neglect Received by DCFS	38,494	47,325
Number of Children Confirmed as Victims of Abuse or Neglect	9,695	9,278

Juvenile Justice State Data

Source: Utah Commission on Criminal and Juvenile Justice, Juvenile Justice Oversight Committee Annual Reports 2022/2023

Nonjudicial Adjustments Outcomes	FY 2022	FY 2023	Juvenile Court Referrals	FY 2022	FY 2023
Successful	91.84%	94.00%	Minority Youth	39.58%	40.73%
Unsuccessful	8.16%	6.00%	Nonminority Youth	57.09%	55.41%
			Unknown (race/ethnicity)	3.33%	3.85%
Nonjudicial Adjustments	FY 2022	FY 2023	Secure Care Placements	FY 2022	FY 2023
Minority Youth	37.25%	39.79%	Minority Youth	62.35%	57.32%
Nonminority Youth	62.75%	60.21%	Nonminority Youth	37.65%	41.46%





SAFE COMMUNITIES

Sources & Definitions

Child Abuse

The number is a distinct reported victim count. Victim counts across counties may be duplicated as a victim could have been serviced in more than one county. Rates are per 1,000 population.

Source: Utah Department of Human Services, DCFS Annual report.
<https://dcfs.utah.gov/resources/reports-and-data/>

Juvenile Justice Data

New this year, the Juvenile Justice Data are selected indicators from the Utah Commission on Criminal & Juvenile Justice and the Juvenile Justice Oversight Committee 2022 & 2023 Annual Report. The data presented are percentages of Nonjudicial Adjustments Outcomes, successful or unsuccessful, the share of Nonjudicial Adjustments, and the percentage of minority or nonminority youth.

The two final indicators also show the data as percentages between minority and nonminority youth: Juvenile Court Referral and the Percentage of Secure Care.

Source: https://justice.utah.gov/wp-content/uploads/FY_2023.html

Juvenile Court Terms Glossary and Acronym Guide

Non Judicial Adjustments

An agreement typically involves the probation officer and the youth agreeing to specific terms and conditions, such as attending counseling, performing community service, or adhering to a curfew, to avoid formal court proceedings.

Secure Care

It is a system designed to provide secure housing for delinquent youth while focusing on their rehabilitation and reintegration into society. This approach aims to balance the need for public safety with recognizing that youth have unique needs and potential for growth and change.

Source: [Source: https://justice.utah.gov/wp-content/uploads/FY_2023.html](https://justice.utah.gov/wp-content/uploads/FY_2023.html)

SHARP Survey

Student Health and Risk Prevention (SHARP) Statewide Survey. The survey is administered every two years, to students in grades 6, 8, 10, and 12.

Source: State of Utah Department of Human Services, Division of Substance Abuse and Mental Health. <https://sumh.utah.gov/data-reports/sharp-survey/>



2023
↑
|||||
UTAH
KIDS COUNT®
DATA BOOK →



Voices for Utah Children

747 East South Temple Suite 100
Salt Lake City, Utah 84102

