

Unieek

2026 BROCHURE



CONTENTS

01.	MADE FOR ALL	02-03
02.	WE OWN THE PROCESS	04-05
03.	OUR CERTIFICATIONS	06
04.	PROUDLY MADE IN HOUSE	07
05.	COLOURS	08-11
06.	PRODUCT FINDER	12-15
07.	GREEN COLLECTION New	16-25
08.	POLOSHIRTS	26-45
09.	T-SHIRTS New	46-59
10.	SWEATSHIRTS New	60-71
11.	RUGBY SHIRT	72-73
12.	HOODED SWEATSHIRTS	74-89
13.	FLEECES AND JACKETS New	90-107
14.	GILETS AND BODYWARMERS New	108-115
15.	SHIRTS	116-119
16.	HI VIS	120-131
17.	KIDS	132-149
18.	TROUSERS	150-159
19.	HEALTHCARE	160-165
20.	HOSPITALITY	166-169
21.	HEADWEAR New	170-175
22.	BESPOKE	176-177
23.	SIZING GUIDE	178
24.	MEASUREMENT GUIDE	179
25.	WASH CARE & FAQ	180

WORKWEAR: BUILT FOR PERFORMANCE

Designed for professionals who demand durability and comfort, our workwear collection delivers. From construction to catering, Uneek workwear ensures safety, ease of movement, and a smart, professional look—so you can focus on the job at hand.

LEISUREWEAR: EVERYDAY COMFORT, ELEVATED

Style and comfort should go hand in hand. Our leisurewear is crafted for versatility—perfect for relaxed work settings, casual outings, and downtime. Whether it's our bestselling polos, fleece jackets, or hoodies, each piece offers premium comfort with a timeless aesthetic.

PROMOTIONAL WEAR: MAKE AN IMPRESSION

Your brand deserves to stand out. Uneek's promotional apparel turns clothing into a powerful marketing tool, offering high-quality, customisable garments ideal for events, corporate branding, and giveaways.

ETHICAL, SUSTAINABLE, AND BUILT TO LAST

We don't just manufacture clothing; we set the standard for responsible production. Owning every stage of the process—from sourcing raw materials to final distribution—allows us to uphold our promise of sustainability, quality, and affordability. By minimising our environmental footprint and prioritising ethical production, we ensure every garment supports both people and the planet.

MADE FOR ALL

At Uneek Clothing, we believe quality should never be a privilege—it should be for everyone. Since 1996, we've been redefining the workwear, leisurewear, and promotional apparel industry, ensuring garments remain accessible, durable, and stylish.

“Made for All” is more than a tagline—it's a promise. Our commitment to inclusivity means we create high-quality, ethically made clothing that meets the needs of businesses, professionals, and individuals across industries. Whether for work, leisure, or promotion, Uneek garments are designed to perform, last, and make an impact.

WELCOME TO UNEEK

Explore our collections and discover how Uneek Clothing delivers quality, value, and sustainability—without compromise. Join us in redefining workwear, leisurewear, and promotional apparel with garments that are truly Made for All.





WE OWN THE PROCESS

At Uneek Clothing, we take pride in owning every stage of production—from sourcing the finest raw materials to distributing finished garments. This ensures that every piece meets our exacting standards of quality, sustainability, and ethical responsibility. By managing the entire supply chain in-house, we stay agile, responding to market demands while maintaining competitive pricing and consistent excellence.

As part of our commitment to innovation and self-sufficiency, we have invested over £100 million into our state-of-the-art spinning mill. This investment enhances our ability to produce high-quality yarn in-house, ensuring greater control over materials, consistency in production, and a more sustainable manufacturing process. By overseeing this critical stage, we can guarantee that every garment starts with superior raw materials, reinforcing our dedication to quality from fibre to finish.

Our end-to-end control isn't just about maintaining high standards; it's a commitment to making quality garments accessible to all while embedding sustainability into everything we do. This approach allows us to create clothing that's built to last and produced responsibly, shaping the future of ethical manufacturing.

A JOURNEY OF QUALITY & SUSTAINABILITY

SOURCING RAW MATERIALS

Sustainability starts at the source. We carefully select ethically produced, high-quality fibres to ensure that every garment begins with integrity.



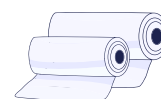
YARN SPINNING

Our in-house yarn mill transforms raw fibres into high-performance yarns, ensuring durability, sustainability, and long-term comfort.



FABRIC PRODUCTION

We weave and knit our fabrics in-house, allowing for innovative fabric blends and finishes that enhance durability, comfort, and sustainability.



DYEING & FINISHING

We use environmentally responsible dyeing processes to achieve vibrant, long-lasting colours while reducing our environmental impact.



CUTTING & SEWING

Skilled craftsmanship meets precision technology, ensuring every garment is designed for durability, performance, and comfort.



QUALITY CONTROL

Rigorous testing at every stage ensures that every Uneek garment meets and exceeds our high standards.



ECO-FRIENDLY PACKAGING & DISTRIBUTION

We package our garments using sustainable materials and ship directly from our own distribution centres, ensuring efficiency, reliability, and minimal waste.



SUSTAINABILITY AT EVERY STEP

Sustainability is woven into every stage of our process. From reducing waste and recycling materials to optimising resource use, we remain committed to a cleaner, greener future—without compromising on quality or value. By choosing Uneek, you're not just selecting clothing, you're supporting a sustainable, ethical, and innovative approach to garment manufacturing.

OUR CERTIFICATIONS

At Uneek Clothing, we are committed to upholding the highest standards of ethical production and responsible manufacturing. Our certifications reflect this commitment, ensuring that our operations not only comply with but exceed international industry standards. These accreditations reinforce our dedication to quality, worker welfare, and sustainable practices at every stage of production.



RMG (READY-MADE GARMENTS)

This certification confirms that our garments are manufactured to meet stringent industry standards, ensuring quality, safety, and compliance in apparel production.



NIRAPON

NIRAPON

Nirapon is an independent organisation that oversees workplace safety within Bangladesh's apparel sector and implements safety systems. This certification ensures that our facilities meet strict safety regulations, supporting the well-being of our workforce.



SEDEX (SUPPLIER ETHICAL DATA EXCHANGE)

Our Sedex certification highlights our commitment to ethical business practices, covering everything from fair labour rights to responsible environmental management.



BETTER WORK

A collaboration between the ILO and IFC, Better Work focuses on enhancing labour conditions. This partnership helps ensure that our facilities uphold best practices in worker rights and workplace safety.



BSCI (BUSINESS SOCIAL COMPLIANCE INITIATIVE)

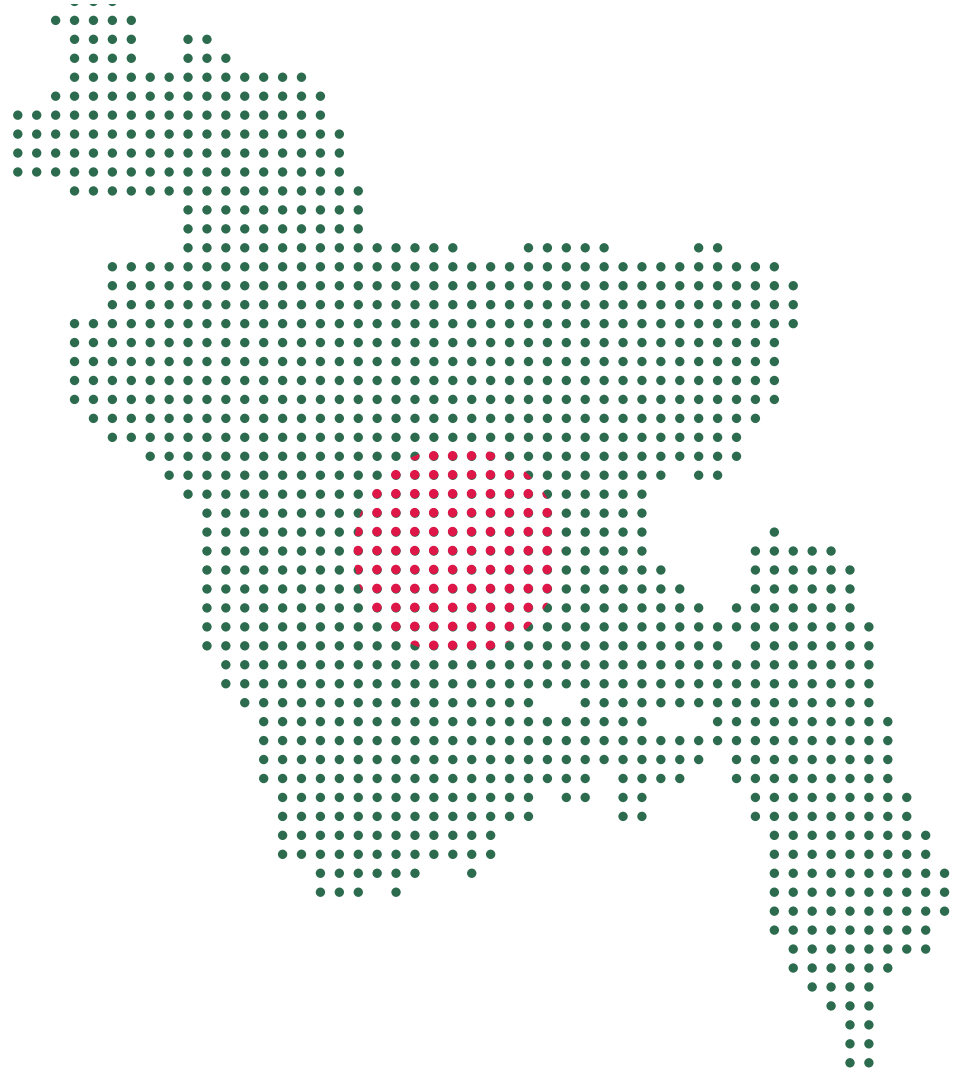
BSCI certification reflects our commitment to improving working conditions throughout the supply chain, ensuring fair treatment and ethical workplace standards.



WRAP (WORLDWIDE RESPONSIBLE ACCREDITED PRODUCTION)

WRAP certification ensures that our manufacturing processes align with globally recognised ethical standards, promoting safe and fair working conditions.

By meeting and exceeding these standards, Uneek Clothing continues to lead the way in responsible manufacturing—delivering high-quality garments with integrity, transparency, and care.



PROUDLY MADE IN HOUSE

Our manufacturing facilities in Bangladesh combine the country's deep-rooted expertise in garment production with our state-of-the-art operations. This strategic location enables us to maintain the highest international standards of quality, safety, and ethical responsibility—ensuring that every garment meets the expectations of our global customers.

We directly employ a skilled workforce dedicated to precision craftsmanship, resulting in consistently high-quality products. As part of our commitment to ethical manufacturing, we provide fair wages, safe working conditions, and opportunities for professional growth—supporting not only our employees but also the wider community.

Sustainability is at the heart of our operations. We integrate responsible practices such as water recycling, energy efficiency, and waste reduction to minimise our environmental impact. By owning our factories, we have full control over every stage of production, ensuring a transparent, responsible supply chain that prioritises both people and the planet.

COLOUR YOUR WORLD

At Uneek, we know that the right colour makes all the difference. Whether you're outfitting a team in classic workwear or creating standout leavers' hoodies, our extensive Pantone-matched selection ensures you'll find the perfect shade. From timeless neutrals to bold, eye-catching hues, our palette is designed to reflect your brand's identity and bring your vision to life.

*Charcoal, Heather Grey and Ash are melange effect shades. The Pantone References shown in these colours are an approximate solid shade representation. They do not replicate the actual melange effect of the garments available in these colours.





GREY
PANTONE: Cool Gray 8 U
(UC630 Only)



PACIFIC GREY
PANTONE: 421 C



HEATHER GREY*
PANTONE: 429 C



SILVER GREY
PANTONE: 434 C



ASH*
PANTONE: Cool Gray 2 C



PURPLE
PANTONE: 2755 U



PURPLE
PANTONE: 7676 C (UC921, UC922,
UC923 And UC924 Only)



VIOLET
PANTONE: 2726 U



FRENCH NAVY
PANTONE: 2767 C



NAVY
PANTONE: 296 C



NAVY
PANTONE: 19-3921 TFX (UC921,
UC922, UC923 And UC924 Only)



NAVY
PANTONE: 2768 C
(UC701-UC704 Only)



DEEP ROYAL
PANTONE: 2746 C
(UC410 Only)



ROYAL BLUE
PANTONE: 293 U



ROYAL BLUE
PANTONE: 19-3952 TFX (UC921,
UC922, UC923 And UC924 Only)



OXFORD BLUE
PANTONE: 2935 U



REEF BLUE
PANTONE: 3015 C



TROPICAL BLUE
PANTONE: 300 U



HOSPITAL BLUE
PANTONE: 17-4319 TFX (UC921, UC922,
UC923 And UC924 Only)



SURF BLUE
PANTONE: 640 U



SAPPHIRE
PANTONE: 639 C



SAPPHIRE
PANTONE: 299 C (UC125,
UC126, UC315, UC316 Only)



MID BLUE
PANTONE: 2718 C



LIGHT BLUE
PANTONE: 2708 C
(UC701-UC704 Only)



SKY BLUE
PANTONE: 2905 C



SKY BLUE
PANTONE: 14-4112 TFX (UC921,
UC922, UC923 And UC924 Only)



TURQUOISE
PANTONE: 3115 U



BROWN
PANTONE: 412 C



MAROON
PANTONE: 209 C



SIZZLING RED
PANTONE: 1955 C



CRANBERRY
PANTONE: 1945 C



FUCHSIA
PANTONE: 220 C



HOT PINK
PANTONE: 219 C



CANDY FLOSS
PANTONE: 219 U



PINK
PANTONE: 2635 C



LILAC
PANTONE: 263 C



RED
PANTONE: 200 C



FIERRY ORANGE
PANTONE: 166 C



ORANGE
PANTONE: 1585 C



ORANGE
PANTONE: 3564 C
(UC630 Only)



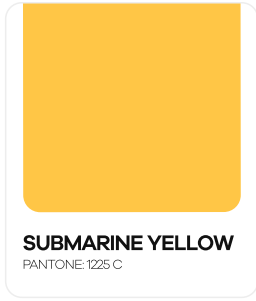
HI VIS ORANGE



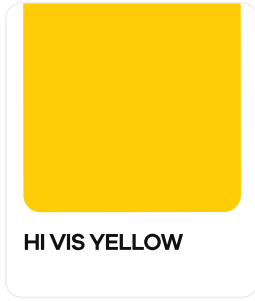
TIGER GOLD
PANTONE: 2012 C



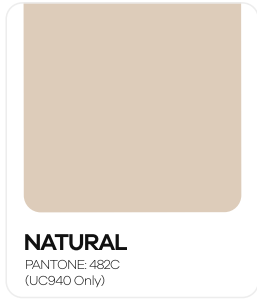
YELLOW
PANTONE: 116 C



SUBMARINE YELLOW
PANTONE: 1225 C



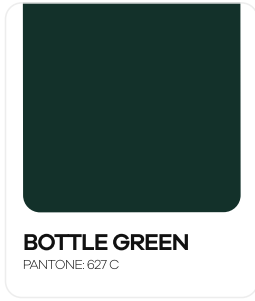
HI VIS YELLOW



NATURAL
PANTONE: 482C
(UC940 Only)



BEIGE
PANTONE: 453 C



BOTTLE GREEN
PANTONE: 627 C



BOTTLE GREEN
PANTONE: 19-5420 TPX (UC921,
UC922, UC923 And UC924 Only)



BOTTLE GREEN
PANTONE: 3308 C
(UC906 Only)



JADE
PANTONE: 329 C



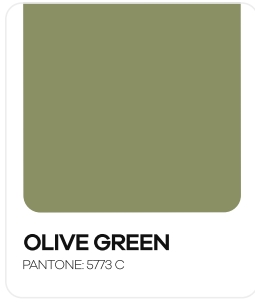
KELLY GREEN
PANTONE: 348 C



AMAZON GREEN
PANTONE: 2418 C



MILITARY GREEN
PANTONE: 5743 U



OLIVE GREEN
PANTONE: 5773 C



ELECTRIC GREEN
PANTONE: 375 C



LIME
PANTONE: 376 C



LIME
PANTONE: 372 C
(UC106 Only)



EMERALD
PANTONE: 17-5641 TPX (UC921,
UC922, UC923 And UC924 Only)



AQUA
PANTONE: 15-5421 TPX (UC921,
UC922, UC923 And UC924 Only)

70 unique COLOURS TO CHOOSE FROM

Pantone references are for approximate colour reference only and may vary depending on the fabric/fabric composition/fabric texture that the garment is made of. Pantone References are not a 100% true representation of the actual fabric in which the garments are made of. They are to be used as an approximate guide only.



PRODUCT FINDER

Category	Product name	Style	Pg
01 GREEN BY UNEEK	Eco T-Shirt	GR31	18
	Eco Poloshirt	GR11	19
	Eco Sweatshirt	GR21	20
	Eco Hoodie	GR51	21
	New Eco Full Zip Fleece Jacket	GR61	22
	New Eco Full Zip Softshell Jacket	GR65	23
	New Eco Workwear Cargo Trouser	GR91	25
02 POLOSHIRTS	Classic Poloshirt	UC101	30
	Heavyweight Poloshirt	UC102	31
	The UX Polo	UX1	32
	Active Poloshirt	UC105	34
	Ladies Classic Poloshirt	UC106	35
	Deluxe Poloshirt	UC108	36
	Longsleeve Classic Poloshirt	UC113	37
	Heavyweight Cotton Poloshirt	UC104	38
	Classic Cotton Poloshirt	UC112	38
	Mens Active Cotton Poloshirt	UC114	39
	Ladies Active Cotton Poloshirt	UC115	39
	ProcessablePoloshirt	UC121	40
	JerseyPoloshirt	UC122	40
	Two Tone Poloshirt	UC117	41
	Mens Ultra Cool Poloshirt	UC125	42
	Ladies Ultra Cool Poloshirt	UC126	43
Mens Ultra Cool Workwear Poloshirt	UC127	44	
Ladies Ultra Cool Workwear Poloshirt	UC128	45	

03	T-SHIRTS	Classic T-Shirt	UC301	48
		Ladies Classic T-Shirt	UC318	50
		Heavyweight T-Shirt	UC302	51
		Long Sleeve Classic T-Shirt	UC314	52
		Olympic T-Shirt	UC320	53
		New Polycotton Workwear T-Shirt	UC321	55
		Classic V-Neck T-Shirt	UC317	56
		Ladies Classic V-Neck T-Shirt	UC319	56
		Ladies Ultra Cool T-Shirt	UC316	58
		Mens Ultra Cool T-Shirt	UC315	59
04	SWEATSHIRTS	Classic Sweatshirt	UC203	62
		Classic V-Neck Sweatshirt	UC204	64
		Ladies Deluxe Crew Neck Sweatshirt	UC211	65
		The UX Sweatshirt	UX3	67
		Heavyweight Sweatshirt	UC201	68
		Two Tone Crew Neck Sweatshirt	UC217	69
		Deluxe Unisex Sweat Jacket	UC212	69
		New Quarter Zip Sweatshirt	UC213	71
05	RUGBY SHIRTS	Classic Rugby Shirt	UC402	73
06	HOODED SWEATSHIRTS	Classic Hooded Sweatshirt	UC502	77
		The UX Hoodie	UX4	79
		Heavyweight Hooded Sweatshirt	UC501	80
		Adults Classic Full Zip Hooded Sweatshirt	UC504	81
		Ladies Classic Full Zip Hooded Sweatshirt	UC505	81
		Deluxe Hooded Sweatshirt	UC509	83
		Ladies Deluxe Hooded Sweatshirt	UC510	84
		Contrast Hooded Sweatshirt	UC507	86
		Two Tone Hooded Sweatshirt	UC517	87
		The UX Jogging Pants	UX9	89
07	FLEECES & JACKETS	Classic Full Zip Fleece Jacket	UC604	93
		Ladies Classic Full Zip Fleece Jacket	UC608	94
		Lightweight Full Zip Microfleece Jacket	UC609	95
		Heavyweight Full Zip Fleece Jacket	UC601	96

FLEECES & JACKETS

Classic 1/4 Zip Fleece Jacket	UC602	96
The UX Full Zip Fleece jacket	UX5	97
Two Tone Full Zip Fleece Jacket	UC617	98
Classic Full Zip Soft Shell Jacket	UC612	99
The Ux Printable Soft Shell Jacket	UX10	100
New Lightweight Quarter Zip Microfleece Jacket	UC610	101
Deluxe Full Zip Soft Shell Jacket	UC611	102
Ladies Classic Full Zip Soft Shell Jacket	UC613	103
Deluxe Outdoor Jacket	UC621	105
Classic Reversible Fleece Jacket	UC605	106
Premium Outdoor Jacket	UC620	107

08 GILETS & BODYWARMERS

New Printable Softshell Gilet	UC614	110
New Ladies Printable Softshell Gilet	UC615	111
New Premium Printable Softshell Gilet	UC616	112
New Microfleece Gilet	UC618	113
New Padded Body warmer	UC619	114
Super Pro Body Warmer	UC640	115

09 SHIRTS

Mens Pinpoint Oxford Full Sleeve Shirt	UC701	117
Ladies Pinpoint Oxford Full Sleeve Shirt	UC703	118
Mens Pinpoint Oxford Half Sleeve Shirt	UC702	119
Ladies Pinpoint Oxford Half Sleeve Shirt	UC704	119

10 HI VIS

Hi Vis Safety Waistcoat	UC801	123
Hi Vis Short Sleeve Poloshirt	UC808	125
Hi Vis Short Sleeve T-Shirt	UC810	127
Long Sleeve Hi Vis Safety Waistcoat	UC802	128
Hi Vis Road Safety Jacket	UC803	129
Hi Vis Bomber Jacket	UC804	130
Hi Vis Trouser	UC807	131

11 KIDS

Childrens Classic Poloshirt	UC103	135
Childrens Active Cotton Poloshirt	UC116	136
Childrens Classic T-Shirt	UC306	137
Childrens Classic Sweatshirt	UC202	139
Childrens Classic V-Neck Sweatshirt	UC206	140

KIDS	Childrens Classic Cardigan	UC207	141
	The UX Childrens Sweatshirt	UX7	142
	Childrens Classic Hooded Sweatshirt	UC503	143
	Childrens Classic Full Zip Hooded Sweatshirt	UC506	144
	Childrens Jog Bottoms	UC521	145
	Childrens Classic Full Zip Fleece Jacket	UC603	146
	Childrens Hi Vis Waist Coat	UC806	147
	The UX Childrens Hooded Sweatshirt	UX8	149
12 TROUSERS	Workwear Trousers	UC901	152
	Mens Cargo Shorts	UC907	153
	Cargo Trousers	UC902	154
	Cargo Trousers With Knee Pad Pockets	UC904	156
	Action Trousers	UC903	157
	Ladies Cargo Trousers	UC905	157
	Super Pro Trousers	UC906	158
13 HEALTHCARE	Scrub Tunic	UC921	162
	Scrub Trousers	UC922	163
	Ladies Heavyweight Tunic	UC923	164
	Mens Heavyweight Tunic	UC924	165
14 HOSPITALITY	Heavyweight Tabard	UC920	167
	Bib Apron with Pocket	UC940	169
15 HEADWEAR	New Heavyweight Cuffed Beanie	UC410	172
	New Rectangular Patch Beanie	UC411	173
	New Circular Patch Beanie	UC412	174
	New Pom Pom Beanie	UC413	175

Green by unEEK | ECO RANGE

GR31	18	
GR11	19	
GR21	20	
GR51	21	
GR61	22	New
GR65	23	New
GR91	25	New

GR11
ROYAL

The Story Behind Our Green Range

At Uneek, we've always been committed to delivering high-quality workwear at unbeatable prices—because we believe excellence should be accessible to everyone. Our passion for craftsmanship and value has made us a trusted name in the industry, but at the heart of it all lies one guiding principle: Mindfulness.

Mindfulness means taking care of our team, supporting our customers' success, and ensuring our products enhance both their business and well-being. But in today's world, it also means looking after the planet.

With climate change reshaping our lives, sustainability is no longer a choice—it's a necessity. Thanks to our vertically integrated manufacturing and distribution facilities, we had the power to create real change—not just in words, but in every stitch, seam, and fibre. Workwear has evolved, becoming smarter, more stylish, and more functional. It only made sense that sustainability should be part of that transformation.

So, we did what we do best—designed a range that blends durability, style, and sustainability without inflating costs. A collection that's better for the planet and the people who wear it.

Meet the Green Range by Uneek—high-quality, eco-conscious workwear that doesn't cost the earth. Or your budget.





GR31
WHITE

GR51
RED

GR21
NAVY

GR31 ECO T-SHIRT



SPECIFICATIONS

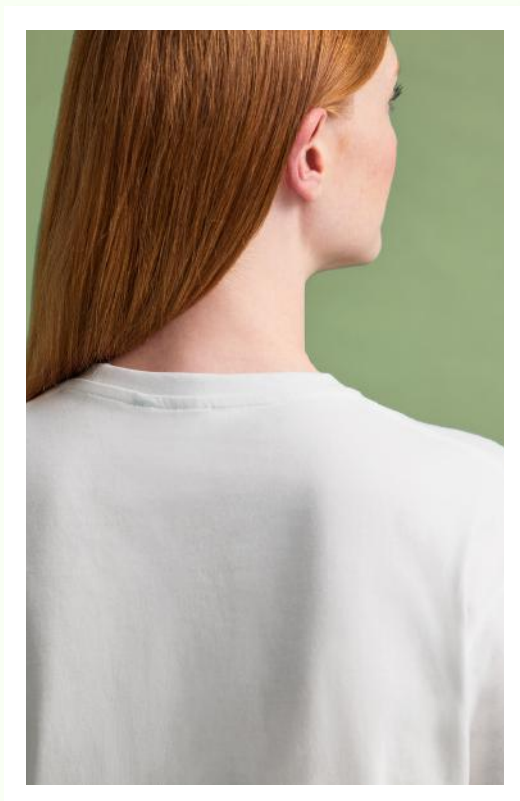
75% Organic Cotton
25% Recycled Cotton
Reactive Dyed
Crew Neck
Taped Shoulder to Shoulder
Twin Needle Stitching on Neck & Shoulders

SIZES

XS-6XL

COLOURS

- | | |
|-----------------------------------|---------------------------------------|
| <input type="checkbox"/> Black | <input type="checkbox"/> Bottle Green |
| <input type="checkbox"/> Charcoal | <input type="checkbox"/> Navy |
| <input type="checkbox"/> Royal | <input type="checkbox"/> Red |
| <input type="checkbox"/> White | |



GR11 ECO POLOSHIRT



SPECIFICATIONS

50% Recycled Polyester
30% Recycled Cotton
20% Organic Cotton
Reactive Dyed
Knitted Collar
Taped Neck
Hemmed Sleeve & Bottom
Washable at 60 Degrees
3 Self Coloured Button Placket

SIZES

XS-6XL

COLOURS

- | | |
|--|---|
|  Black |  Bottle Green |
|  Charcoal |  Navy |
|  Royal |  Red |



GR21 ECO SWEATSHIRT



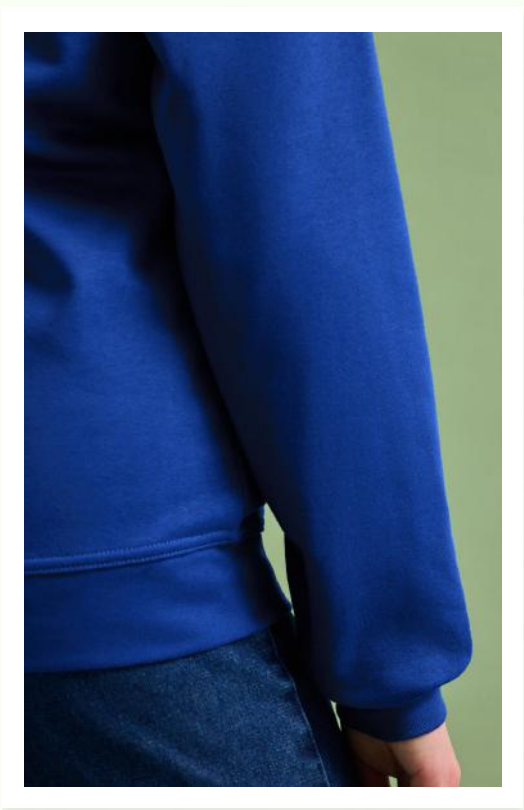
SPECIFICATIONS

Super Soft Luxurious Feel Fabric
50% Recycled Polyester 30% Recycled Cotton 20% Organic Cotton (Charcoal - 55% Recycled Polyester 27% Recycled Cotton 18% Organic Cotton)
Reactive Dyed
Set in Sleeve
Brushed Effect for Superior Comfort and Look
Twin Needle Stitching at Neck, Shoulders, Armholes and Sleeves
Lycra Ribbed Cuffs, Welt and Neck

SIZES

XS-6XL

COLOURS



GR51 ECO HOODIE



SPECIFICATIONS

50% Recycled Polyester
30% Recycled Cotton
20% Organic Cotton
Charcoal - 55% Recycled Polyester 27%
Recycled Cotton 18% Organic Cotton
Super Soft Luxurious Feel Fabric
Reactive Dyed
Lycra Ribbed Cuffs & Welt
Twin Needle Stitching
Taped Neck
Front Pouch Pocket
Double Fabric Hood
Self Coloured Cord
Brushed Effect for Superior
Comfort & Look
Smart Contemporary Fit

SIZES

XS-6XL

COLOURS



Black



Bottle Green



Charcoal



Navy



Royal



Red



GR61 New

ECO FULL ZIP FLEECE JACKET



SPECIFICATIONS

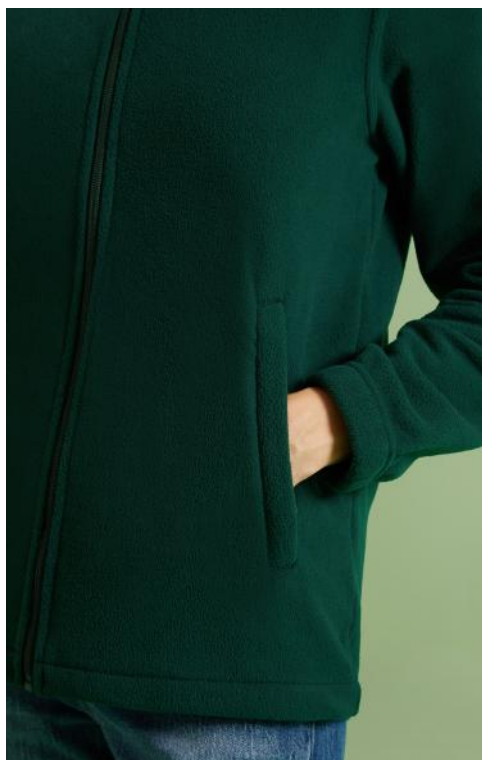
100% Recycled Polyester Super Soft Anti Pill
Double Brushed Micro Fleece
Twin Needle Stitching
Elasticated Cuffs
Full Self Coloured Zip with Zip Puller
Hanger Loop Inside Neck
Cadet Style Collar
2 Self Coloured Covered Zipped Pockets
Contemporary Fit

SIZES

XS-4XL

COLOURS

- Black
- Bottle Green
- Charcoal
- Navy
- Royal



GR65 New

ECO FULL ZIP SOFTSHELL JACKET



SPECIFICATIONS

3 Layer Waterproof 10000 mm Bonded Fabric
Outer Layer: 93% Recycled Polyester, 7% Elastane
Mid Layer: TPU Waterproof, Breathable & Windproof
Inner Layer: 100% Recycled Polyester Microfleece for Extra Warmth
Set In Sleeve
Hemmed Sleeve Opening
Full Self Coloured Waterproof Zipper with Zip Puller
2 Self Coloured Covered Waterproof Zipped Pockets
Adjustable Hem with Toggles
Inner Storm Flap
Extended Back
Hanger Loop Inside Neck
Cadet Style Collar
Smart Contemporary Fit

SIZES

XS-6XL

COLOURS

- Black
- Charcoal
- Navy





GR91 New

ECO WORKWEAR CARGO TROUSER



SPECIFICATIONS

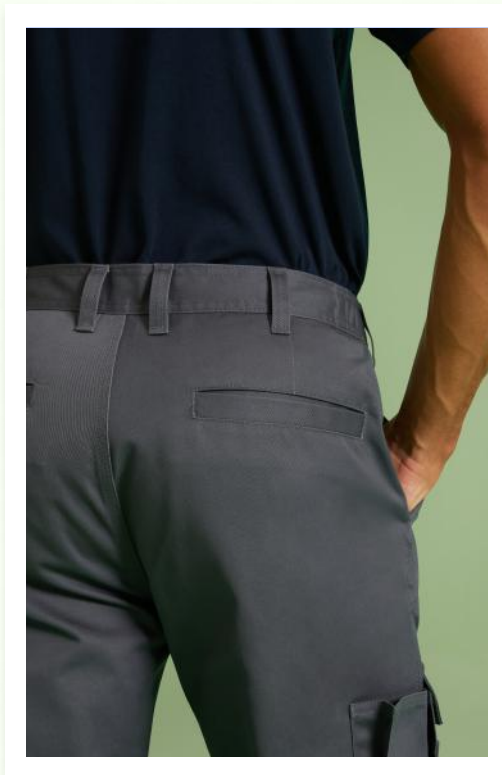
65% Recycled Polyester, 35% Cotton Heavy Duty Twill Fabric
Fabric: 245 GSM/7 oz
Side Elastication at Waistband for Extra Comfort
Flat Front Design
2 Front Pockets at Waistband
2 Multi-Functional Side Pockets with Velcro Flaps for Ample Storage, including a Phone Pocket and Slots for Tools
2 Welt Pockets at the Back
2 Front Darts for Extra Comfort
Concealed Metal Rivet Button Fastening at Waist
Triple Stitched Seams for Extra Durability
Internal Knee Pad Pockets
7 X Belt Loops
High Quality YKK Brass Zipper
Washable at 60 degrees

SIZES

28-52

COLOURS

 Black  Grey  Navy



POLO SHIRTS COLLECTION





UC101	30
UC102	31
UX1	32
UC105	34
UC106	35
UC108	36
UC113	37
UC104	38
UC112	38
UC114	39
UC115	39
UC121	40
UC122	40
UC117	41
UC125	42
UC126	43
UC127	44
UC128	45

A TRUE CLASSIC

Our Classic Poloshirt isn't just any polo—it's a legend. Built for durability, comfort, and unbeatable value, this versatile, hard-wearing classic is the ultimate go-to for workwear, uniforms, and everyday style.

*Product specifications on page 30



AVAILABLE IN
17 COLOURS



UC101
CLASSIC
POLOSHIRT



UC101 CLASSIC POLOSHIRT



SPECIFICATIONS

50% Polyester 50% Cotton
Reactive Dyed
Knitted Collar
Taped Neck
Hemmed Sleeve & Bottom
Washable at 60 Degrees
3 Self Coloured Button Placket

SIZES

XS-6XL*

*5XL & 6XL available in Black, Bottle Green, French Navy and Navy only.

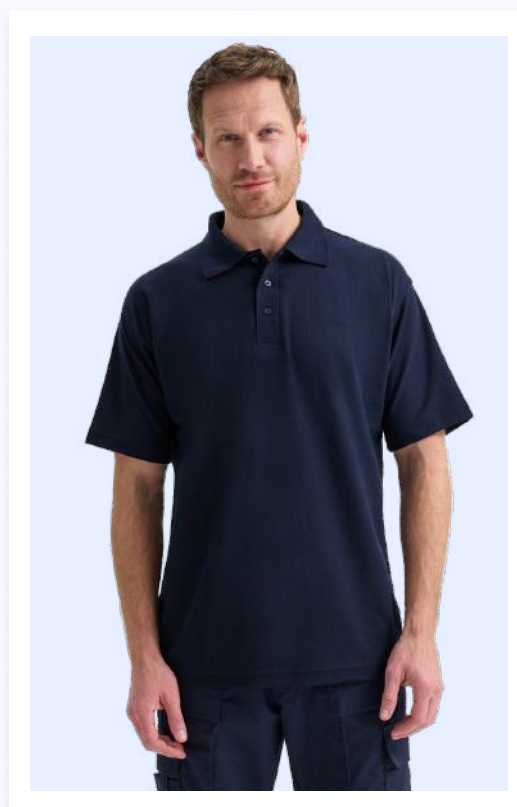
COLOURS

Black	Bottle Green	Charcoal
Kelly Green	Maroon	Heather Grey
Navy	French Navy	Sky
Red	Purple	Hot Pink
Royal	Sapphire	Orange
White	Yellow	



Navy

Please scan QR code
for more details



UC102

HEAVYWEIGHT POLOSHIRT



SPECIFICATIONS

50% Polyester, 50% Cotton

Reactive Dyed

Knitted Raised Collar and Raised Cuffs

Taped Neck

Taped Side Vents with Extended Back

Washable at 60 Degrees

3 Self Coloured Button Placket

SIZES

XS-6XL*

*5XL & 6XL available in Black, French Navy and Navy only.

COLOURS

- | | |
|--------|--------------|
| Black | Bottle Green |
| Maroon | Heather Grey |
| Red | French Navy |
| Navy | Sky |
| Royal | White |
| Yellow | |

Heather Grey

Please scan QR code
for more details



UX1 THE UX POLO



180
GSM



SPECIFICATIONS

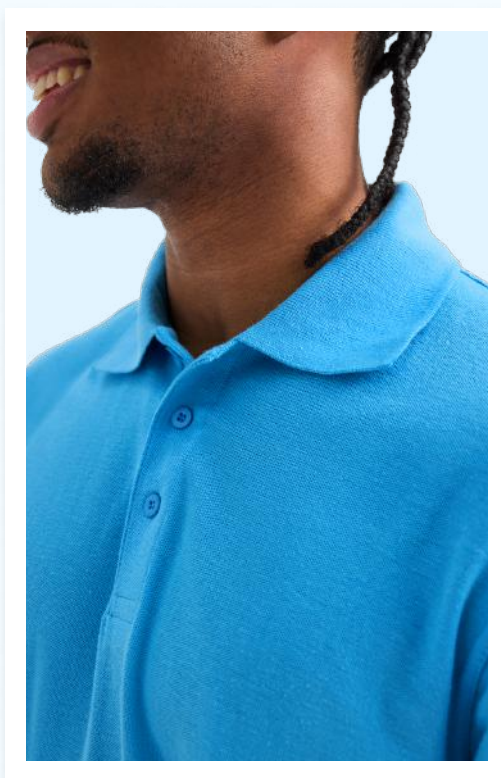
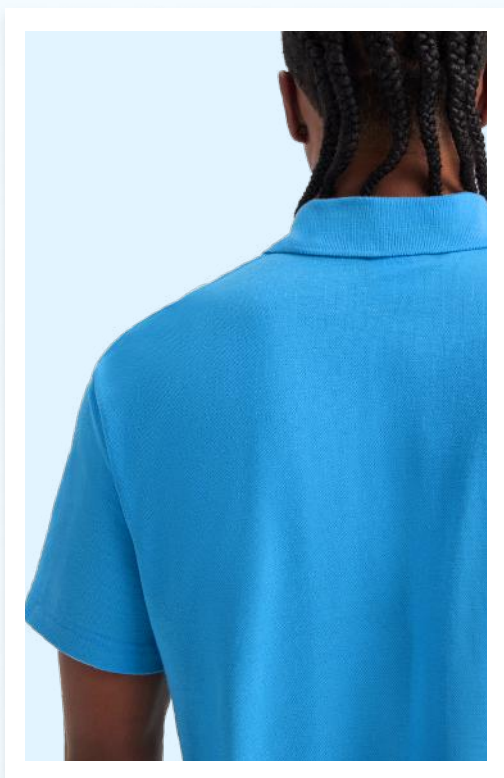
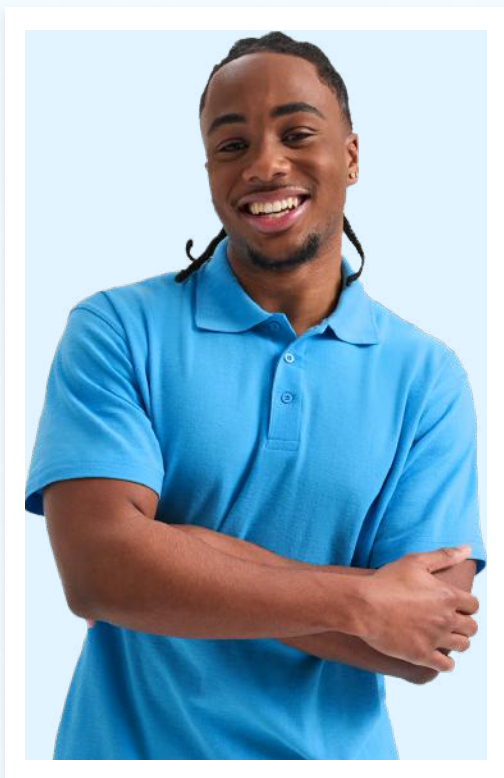
50% Polyester, 50% Cotton
Reactive Dyed
Knitted Collar
Taped Neck
Hemmed Sleeve and Bottom
Washable at 60 Degrees
3 Self Coloured Button Placket
Enzyme washed for extra soft
hand-feel and reduced
shrinkage
Contemporary Fit

SIZES

XS-6XL

COLOURS

- | | |
|--------------|--------------|
| Black | Bottle Green |
| Charcoal | Maroon |
| Heather Grey | Navy |
| Sky | Red |
| Royal | White |





MAXIMUM VALUE

UC105 ACTIVE POLOSHIRT



200
GSM



Red

Please scan QR code
for more details

SPECIFICATIONS

50% Polyester, 50% Cotton
Reactive Dyed
Knitted Collar
Taped Neck
Hemmed Sleeve and Bottom
Washable at 60 Degrees
3 Self Coloured Button Placket
Enzyme washed for extra soft
hand-feel and reduced
shrinkage

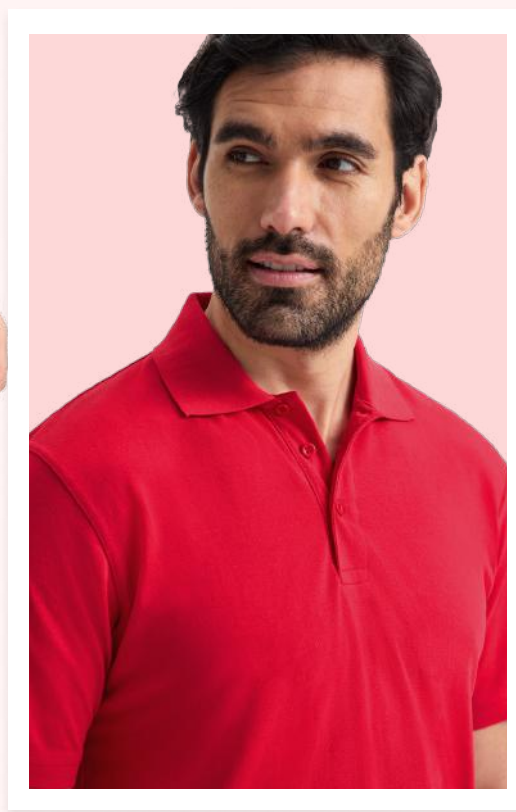
SIZES

XS-6XL*

*5XL & 6XL available in Black, French Navy and Navy only.

COLOURS

- | | |
|----------|--------------|
| Black | Bottle Green |
| Charcoal | Royal |
| Maroon | Heather Grey |
| Navy | French Navy |
| Sky | Red |
| Purple | White |



UC106

LADIES CLASSIC POLOSHIRT



SPECIFICATIONS

50% Polyester 50% Cotton
Reactive Dyed
Knitted Collar
Washable at 60 Degrees
3 Self Coloured Button Placket
Half Moon Yoke
Open Hem Sleeve
Taped Shoulder & Back Neck
Side Vents
Twin Needle Stitching

SIZES

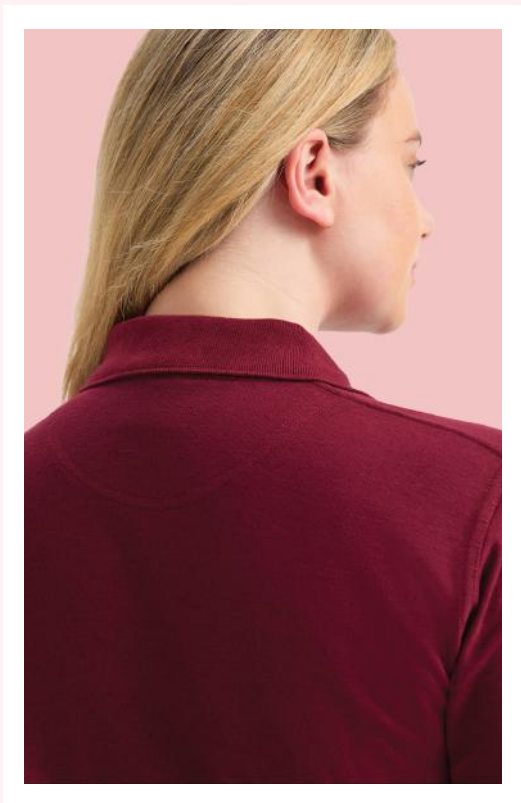
XS-4XL

COLOURS

- | | | |
|----------|--------------|----------|
| Black | Bottle Green | Charcoal |
| Maroon | Heather Grey | Red |
| Lilac | Navy | Sky |
| Royal | Pink | Lime |
| Hot Pink | Purple | Orange |
| Yellow | White | |

Maroon

Please scan QR code
for more details



UC108 DELUXE POLOSHIRT



French Navy
Please scan QR code
for more details

SPECIFICATIONS

50% Polyester, 50% Cotton
Reactive Dyed
Knitted Raised Collar
and Raised Cuffs
Taped Neck
Twin Needle Stitching
Washable at 60 Degrees
3 Self Coloured Button Placket

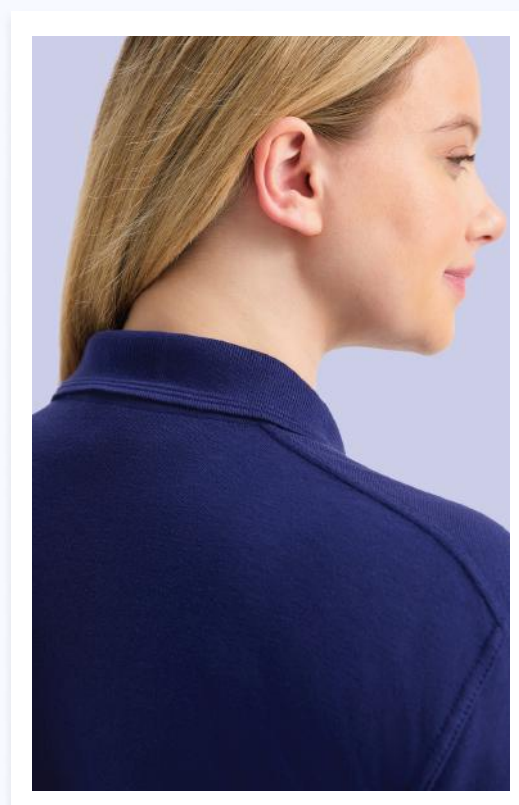
SIZES

XS-8XL*

*5XL, 6XL, 7XL & 8XL available in Black and Navy only.

COLOURS

- | | |
|--------------|--------------|
| Black | Bottle Green |
| Charcoal | Maroon |
| Heather Grey | Navy |
| French Navy | Sky |
| Red | Purple |
| Royal | Orange |
| White | Yellow |



UC113 LONGSLEEVE CLASSIC POLOSHIRT



SPECIFICATIONS

50% Polyester, 50% Cotton
Long Sleeve
Reactive Dyed
Knitted Raised Collar and Plain Cuffs
Taped Neck
Side Vents with Extended Back
Washable at 60 Degrees
3 Self Coloured Button Placket

SIZES

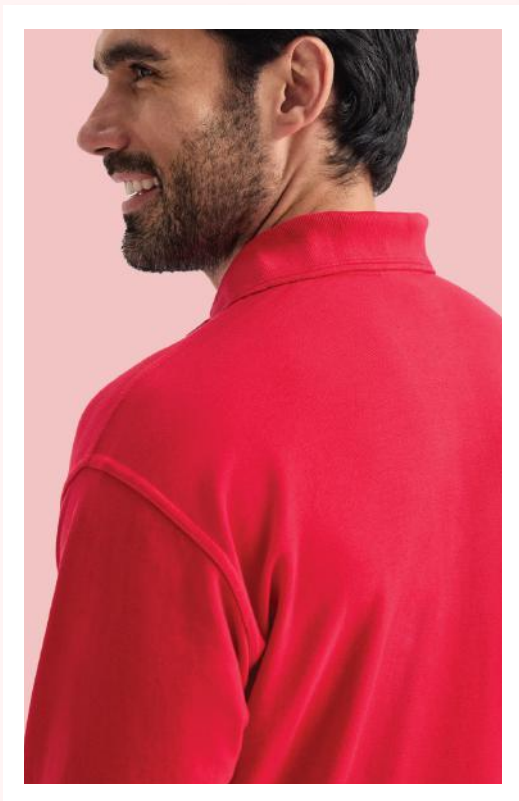
XS-4XL

COLOURS

- | | |
|--|--|
|  Black |  Bottle Green |
|  Charcoal |  Maroon |
|  Heather Grey |  Red |
|  Navy |  Royal |
|  White | |

Red

Please scan QR code
for more details



UC104 HEAVYWEIGHT COTTON POLOSHIRT



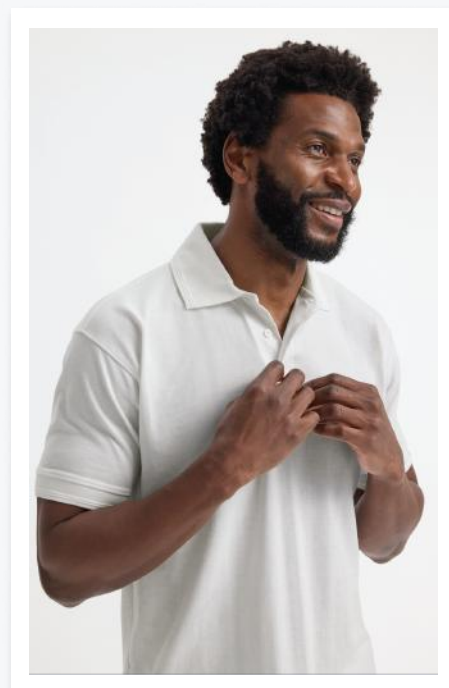
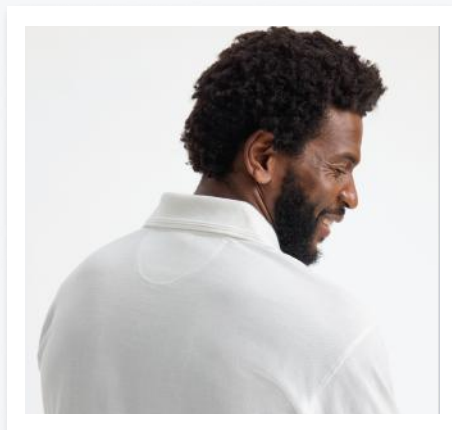
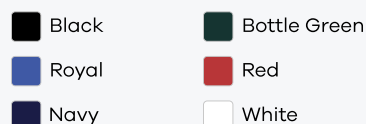
SPECIFICATIONS

100% Ring Spun Combed Cotton
Reactive Dyed
Knitted Raised Collar and Cuffs
Half Moon Yoke
Taped Neck
Taped Side Vents with
Extended Back
3 Self Coloured Button Placket

SIZES

XS-4XL*
*4XL available in Navy only.

COLOURS



UC112 CLASSIC COTTON POLOSHIRT



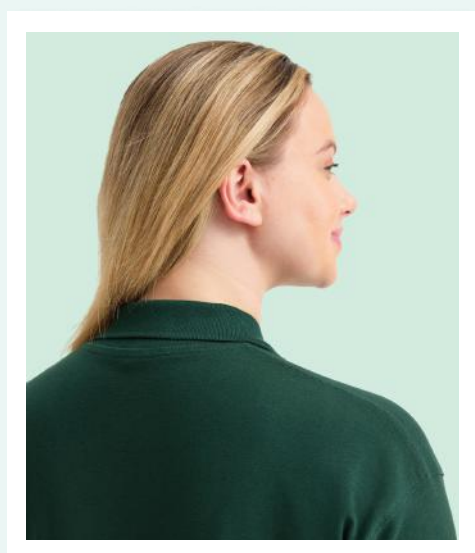
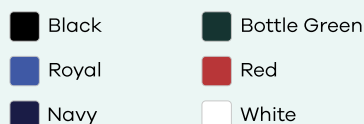
SPECIFICATIONS

100% Cotton
Reactive Dyed
Knitted Raised Collar and Cuffs
Taped Neck
3 Self Coloured Button Placket
Enzyme washed for extra soft hand-
feel and reduced shrinkage

SIZES

XS-4XL

COLOURS



UC114

MENS ACTIVE COTTON POLOSHIRT



SPECIFICATIONS

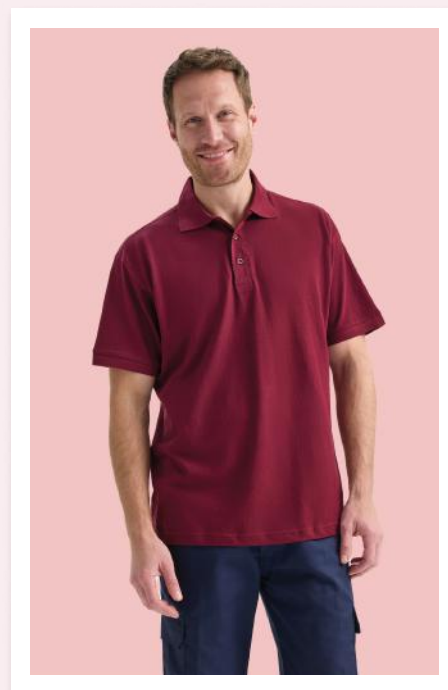
All colours except Heather Grey are 100% Pre-Shrunk Ring spun Combed Cotton
 Heather Grey is 50% Polyester, 45% Cotton, 5% Viscose
 Reactive Dyed
 Knitted Collar and Cuffs
 Taped Neck
 Twin Needle Stitching on Hem
 Washable at 40 Degrees
 3 Self Coloured Button Placket
 Contemporary Fit

COLOURS

- Black
- Charcoal
- Maroon
- Navy
- Sky
- Purple
- Royal
- Lime
- Yellow
- Bottle Green
- Kelly Green
- Heather Grey
- French Navy
- Red
- Hot Pink
- Sapphire
- White

SIZES

XS-3XL



UC115

LADIES ACTIVE COTTON POLOSHIRT



SPECIFICATIONS

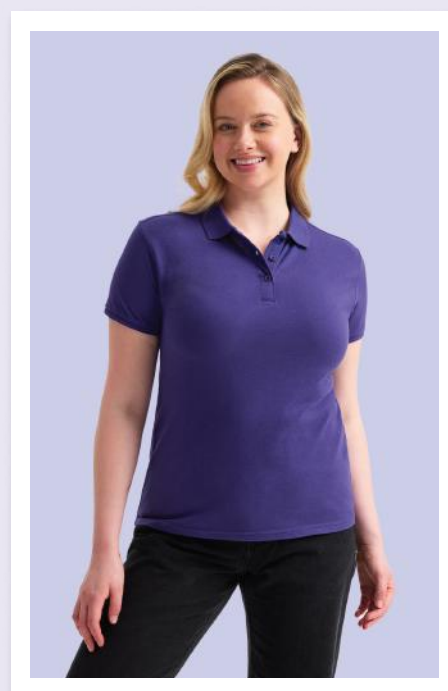
All colours except Heather Grey are 100% Pre-shrunk Ringspun Combed Cotton
 Heather Grey is 50% polyester, 45% Cotton, 5% Viscose
 Reactive Dyed
 Knitted Collar and Cuff
 Taped Neck
 Twin Needle Stitching on Hem
 Washable at 40 Degrees
 3 Self Coloured Button Placket
 Contemporary Fit

COLOURS

- Black
- Charcoal
- Navy
- Sky
- Purple
- Royal
- White
- Bottle Green
- Heather Grey
- French Navy
- Red
- Hot Pink
- Sapphire
- Yellow

SIZES

XS-3XL



UC121 PROCESSABLE POLOSHIRT



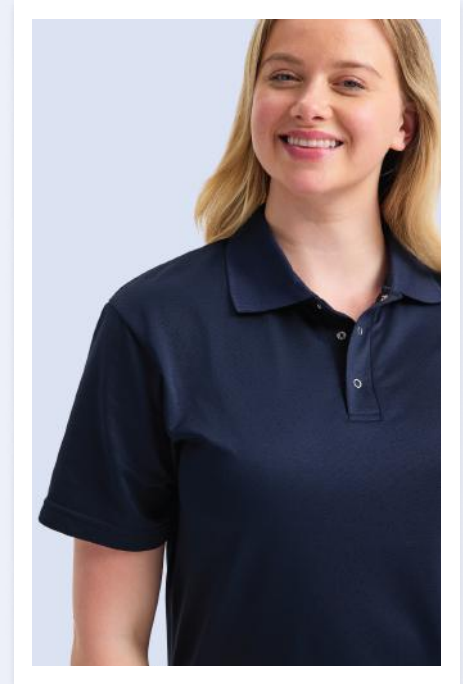
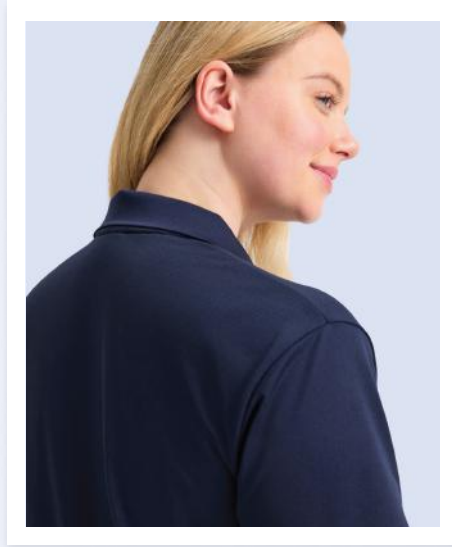
SPECIFICATIONS

100% Polyester Pique Knit Fabric
Breathable Fabric
Knitted Collar
Taped Neck
Hemmed Sleeve and Bottom
Washable at 60 Degrees
3 Stud Button Placket

SIZES

S-3XL

COLOURS



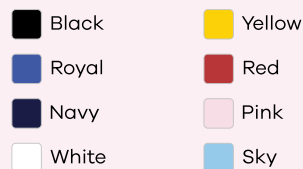
UC122 JERSEY POLOSHIRT



SPECIFICATIONS

100% Cotton
Reactive Dyed
Knitted Collar and Cuffs
Taped Neck
Hemmed Sleeve and Bottom
3 Self Coloured Button Placket

COLOURS



SIZES

XS-3XL



UC117

TWO TONE POLOSHIRT



SPECIFICATIONS

50% Polyester, 50% Cotton
Reactive Dyed Fabric
Contemporary Fit
Contrast Colour Side Panel
on Front and Undersleeve
Knitted Collar and Cuff with
Contrast Stripe
Internal Back Neck Tape in
Contrast Colour
Twin Needles Stitching
3 Self Coloured Button Placket

SIZES

XS-4XL

COLOURS

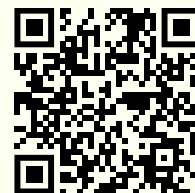
-  Black/Red
-  Black/Charcoal
-  Black/Yellow
-  Charcoal/Black
-  Navy/Red


Black/Red

Please scan QR code
for more details



UC125 MENS ULTRA COOL POLOSHIRT



 **Electric Green**
Please scan QR code
for more details



SPECIFICATIONS

100% Polyester Textured
Breathable Fabric
with Wicking Properties
Self Fabric Collar
Hemmed Sleeve and Bottom
Washable at 30 Degrees
3 Self Coloured Button Placket

SIZES

XS-3XL

COLOURS

- | | |
|---|--|
|  Black |  Electric Green |
|  Red |  Royal |
|  Sapphire |  Navy |
|  White | |



UC126 LADIES ULTRA COOL POLOSHIRT










SPECIFICATIONS

100% Polyester Textured
Breathable Fabric
with Wicking Properties
Self Fabric Collar
Taped Neck
Hemmed Sleeve and Bottom
Washable at 30 Degrees
3 Self Coloured Button Placket

SIZES

XS-2XL

COLOURS

- | | |
|--|--|
|  Black |  Electric Green |
|  Red |  Royal |
|  Sapphire |  Navy |
|  White | |



Red

Please scan QR code
for more details



UC127 MENS ULTRA COOL WORKWEAR POLOSHIRT



Royal
Please scan QR code
for more details

SPECIFICATIONS

100% Polyester Pique
Breathable Fabric
with Wicking Properties
Knitted Collar
Taped Neck
Side Vents
Hemmed Sleeve and Bottom
Washable at 30 Degrees
3 Self Coloured Button Placket

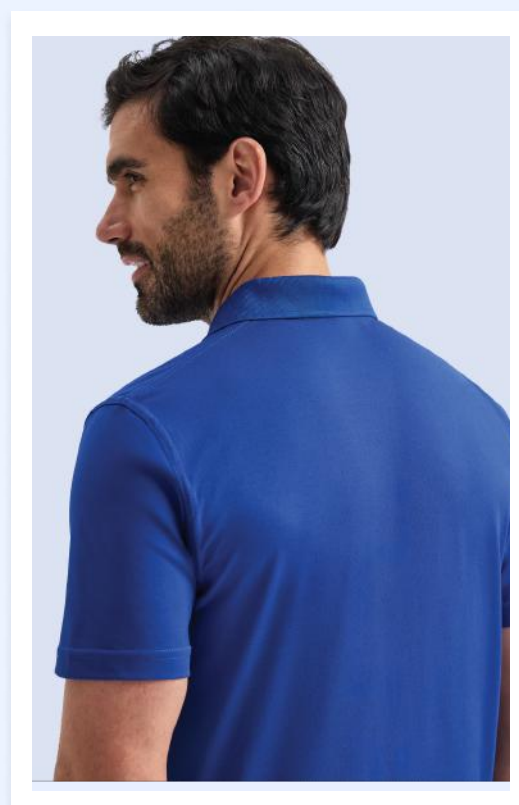
SIZES

XS-5XL*

*4XL available in Black, Navy and White only.

*5XL available in Navy only.

COLOURS



UC128 LADIES ULTRA COOL WORKWEAR POLOSHIRT



SPECIFICATIONS

100% Polyester Pique Breathable Fabric
with Wicking Properties
Knitted Collar
Taped Neck
Side Vents
Hemmed Sleeve and Bottom
Washable at 30 Degrees
3 Self Coloured Button Placket

SIZES

XS-3XL*

*3XL available in Black only.

COLOURS

Black


Navy

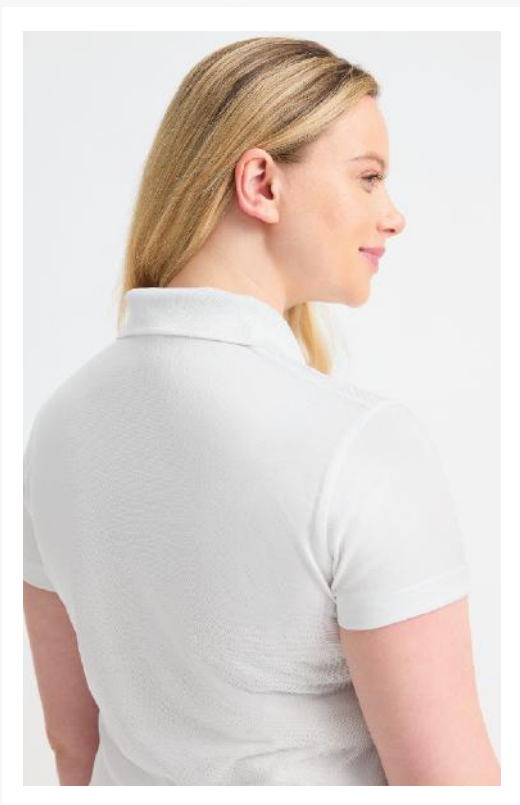
Royal

Red

White



 **White**
Please scan QR code
for more details



T-SHIRTS COLLECTION

UC301	48
UC318	50
UC302	51
UC314	52
UC320	53
UC321	55
UC317	56
UC319	56
UC316	58
UC315	59

New





UC301 CLASSIC T-SHIRT



SPECIFICATIONS

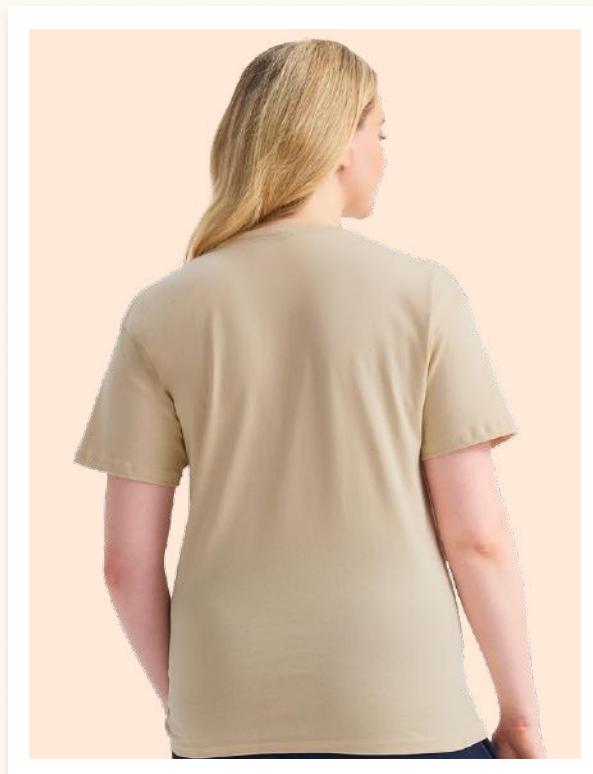
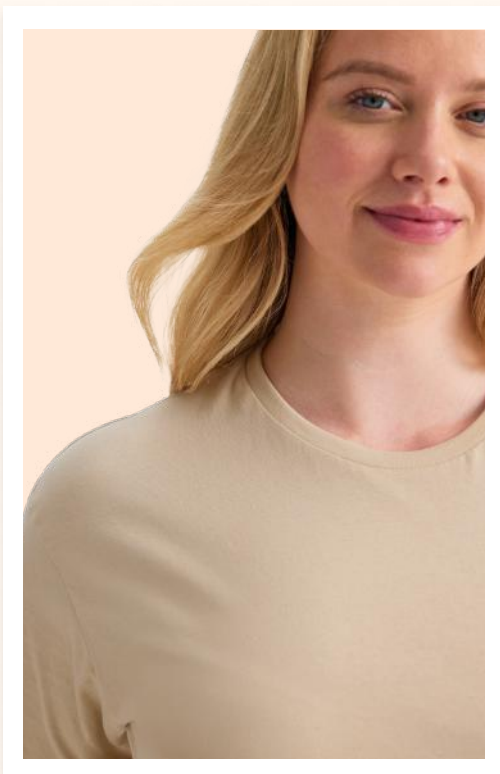
100% Cotton
Reactive Dyed
Crew Neck
Taped Neck and Shoulder Seam
Enzyme washed for extra soft
hand-feel and reduced shrinkage
Twin Needle Stitching at Sleeve
and Hem

SIZES

XS-6XL

COLOURS

- | | | |
|-------------|--------------|----------------|
| Black | Bottle Green | Charcoal |
| Kelly Green | Maroon | Heather Grey |
| Navy | French Navy | Sky |
| Red | Purple | Hot Pink |
| Royal | Sapphire | Orange |
| Beige | Brown | Military Green |
| Yellow | White | |





EVERYDAY ESSENTIAL

UC318 LADIES CLASSIC T-SHIRT



SPECIFICATIONS

100% Cotton
Reactive Dyed
Crew Neck
Taped Neck And Shoulder Seam
Twin Needle Stitching on Sleeve
and Hem
Enzyme washed for extra soft hand-
feel and reduced shrinkage

SIZES

XS-2XL

COLOURS

- | | | |
|-------------|--------------|--------------|
| Black | Bottle Green | Charcoal |
| Kelly Green | Maroon | Heather Grey |
| Navy | Orange | Sky |
| Red | Purple | Hot Pink |
| Royal | Yellow | White |

Hot Pink
Please scan QR code
for more details



UC302 HEAVYWEIGHT T-SHIRT



SPECIFICATIONS

100% Cotton
Reactive Dyed
Crew Neck
Taped Neck And Shoulder Seam
Twin Needle Stitching at Sleeve
and Hem
Enzyme washed for extra soft
hand-feel and reduced shrinkage

SIZES

S-3XL

COLOURS

Black

Bottle Green

Heather Grey

Royal

Red

Navy

White

Navy

Please scan QR code
for more details



UC314 LONG SLEEVE CLASSIC T-SHIRT



SPECIFICATIONS

100% Cotton
Reactive Dyed
Long Sleeve
Crew Neck
Taped neck and shoulder seam
Twin Needle Stitching on
Cuff and Hem
Enzyme washed for extra soft
hand-feel and reduced shrinkage

SIZES

S-4XL

COLOURS

Black White



Black
Please scan QR code
for more details



UC320 OLYMPIC T-SHIRT



SPECIFICATIONS

100% Cotton
Crew Neck
Reactive Dyed
Taped Neck
Twin Needle Stitching at Sleeve and Hem
Enzyme washed for extra soft hand-feel and reduced shrinkage

SIZES

XS-4XL

COLOURS

- | | | |
|----------|--------------|--------------|
| Black | Heather Grey | Navy |
| Red | Royal | Purple |
| Sky | Hot Pink | Kelly Green |
| Charcoal | French Navy | Bottle Green |
| Orange | Maroon | White |

Bottle Green
Please scan QR code
for more details





**TOUGH ENOUGH
FOR THE JOB**

UC321 New

POLYCOTTON WORKWEAR T-SHIRT



Royal
Please scan QR code
for more details

SPECIFICATIONS

Reactive Dyed
50% Cotton 50% Polyester
Crew Neck
Taped Shoulder to Shoulder
Twin Needle Stitching on Neck & Shoulders

SIZES

XS-6XL

COLOURS

- Black
- Charcoal
- Heather Grey
- Navy
- Royal
- White



UC317 CLASSIC V-NECK T-SHIRT



SPECIFICATIONS

100% Cotton
 Reactive Dyed
 V-Neck
 Internal Tape on Back Neck and
 Shoulder Seam
 Twin Needle Stitching on Sleeve
 and Hem
 Enzyme washed for extra soft
 hand-feel and reduced
 shrinkage

SIZES

XS-4XL



COLOURS



UC319 LADIES CLASSIC V-NECK T-SHIRT

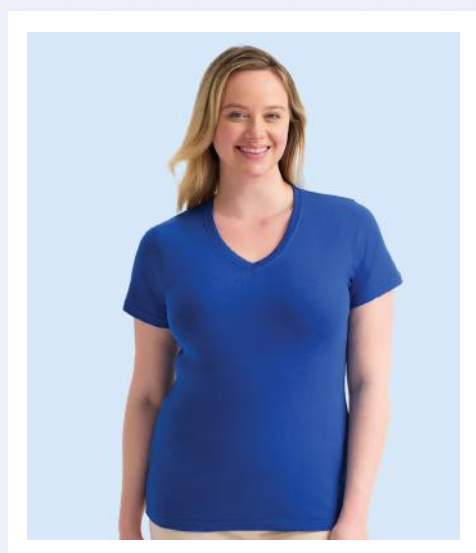


SPECIFICATIONS

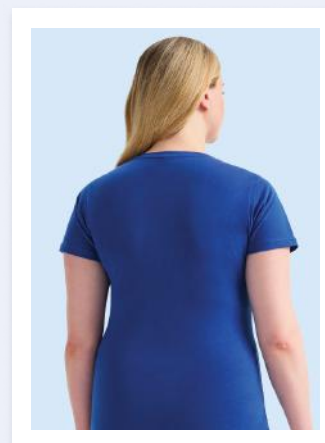
Reactive Dyed
 100% Cotton
 V-Neck
 Taped Shoulder to Shoulder
 Twin Needle Stitching on Neck &
 Shoulder
 Enzyme Washed

SIZES

XS-2XL



COLOURS



STAY ACTIVE



UC316
ROYAL

UC315
RED

UC316 LADIES ULTRA COOL T-SHIRT



SPECIFICATIONS

100% Polyester Textured Breathable
Fabric with Wicking Properties
Crew Neck
Taped Shoulder to Shoulder
Hemmed Sleeve and Bottom
Washable at 30 Degrees

SIZES

XS-2XL

COLOURS



Royal

Please scan QR code
for more details



UC315 MENS ULTRA COOL T-SHIRT










SPECIFICATIONS

100% Polyester Textured Breathable
Fabric with Wicking Properties
Crew Neck
Taped Shoulder to Shoulder
Hemmed Sleeve and Bottom
Washable at 30 Degrees

SIZES

XS-3XL

COLOURS

- | | |
|--|--|
|  Black |  Electric Green |
|  Red |  Royal |
|  Sapphire |  Navy |
|  White | |



SWEATSHIRTS COLLECTION

UC203	62
UC204	64
UC211	65
UX3	67
UC201	68
UC217	69
UC212	69
UC213	71

New






UC203 CLASSIC SWEATSHIRT



300
GSM



 **Maroon**
Please scan QR code
for more details

SPECIFICATIONS

50% Polyester, 50% Cotton
Reactive Dyed
Set in Sleeve
Lycra Ribbed Cuffs, Welt and Neck
Twin Needle Stitching at Neck,
Shoulders, Armholes and Sleeves
Brushed Effect for Superior Comfort
and Look

SIZES

XS-6XL

COLOURS

- | | | |
|-------|--------------|--------------|
| Black | Bottle Green | Charcoal |
| White | Maroon | Heather Grey |
| Navy | French Navy | Sky |
| Red | Purple | Pink |
| Royal | Sapphire | Yellow |






CLASSIC COMFORT

UC204 CLASSIC V-NECK SWEATSHIRT



300
GSM



 **Bottle Green**
Please scan QR code
for more details

SPECIFICATIONS

50% Polyester, 50% Cotton
Reactive Dyed
V-Neck
Set in Sleeve
Lycra Ribbed Cuffs, Welt and Neck
Twin Needle Stitching at Neck,
Shoulders, Armholes and Sleeves
Brushed Effect for Superior Comfort
and Look

SIZES

XS-4XL

COLOURS

-  Black
-  Bottle Green
-  Navy
-  Royal



UC211 LADIES DELUXE CREW NECK SWEATSHIRT



SPECIFICATIONS


60% Pre-Shrunk Ring Spun
Combed Cotton 40% Polyester
Charcoal Composition
50% Cotton / 50% Polyester
Super Soft Luxurious Feel Fabric
Reactive Dyed
Brushed Effect for Superior
Comfort & Look
Enzyme washed for extra soft
hand-feel and reduced shrinkage
Set in Sleeve
Lycra Ribbed Cuffs, Welt & Neck
Twin Needle Stitching at Neck,
Shoulders, Armholes & Sleeves
Contemporary Fit

SIZES

XS-2XL

COLOURS



 **Purple**
Please scan QR code
for more details





UNBEATABLE
VALUE

UX3 THE UX SWEATSHIRT



SPECIFICATIONS

50% Polyester, 50% Cotton

Reactive Dyed

Set in Sleeve

Lycra Ribbed Cuffs, Welt and Neck

Twin Needle Stitching at Neck,

Shoulders, Armholes and Sleeves

Brushed Effect for Superior Comfort
and Look

Contemporary Fit

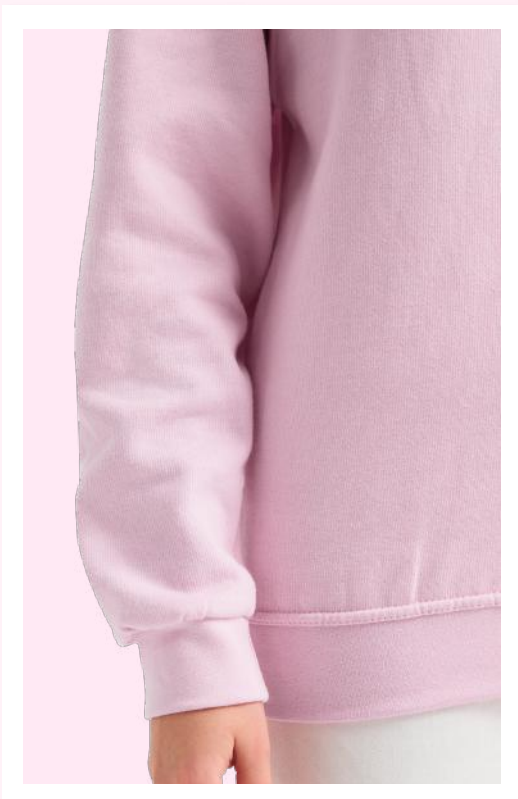
SIZES

XS-6XL

COLOURS

Black	Bottle Green	Charcoal
Maroon	Heather Grey	Navy
Sky	Red	Brown
Pink	Royal	Sand
White		

Pink
Please scan QR code
for more details



UC201 HEAVYWEIGHT SWEATSHIRT



SPECIFICATIONS

50% Polyester, 50% Cotton
Reactive Dyed
Set in Sleeve
Lycra Ribbed Cuffs, Welt and Neck
Twin Needle Stitching at Neck,
Shoulders, Armholes and Sleeves
Half Moon Yoke at Back Neck
Brushed Effect for Superior
Comfort and Look

SIZES

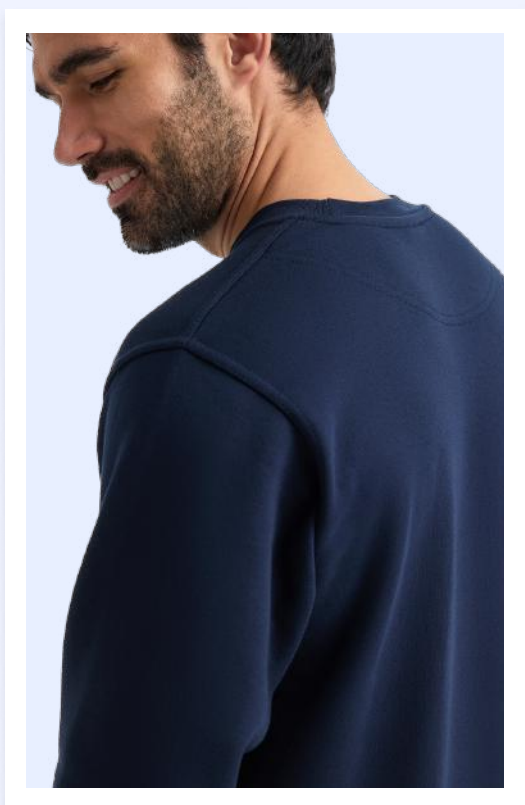
XS-4XL

COLOURS



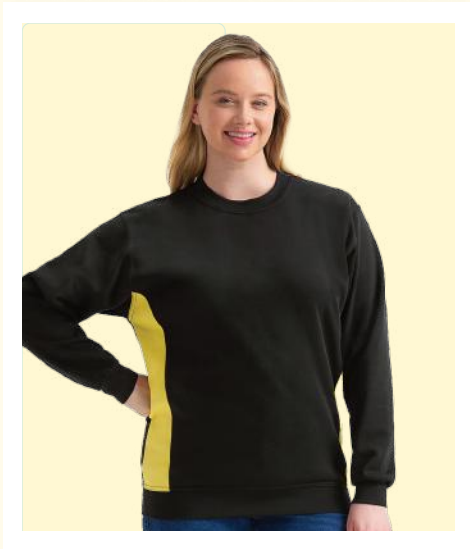
Navy

Please scan QR code
for more details



UC217

TWO TONE CREW NECK SWEATSHIRT

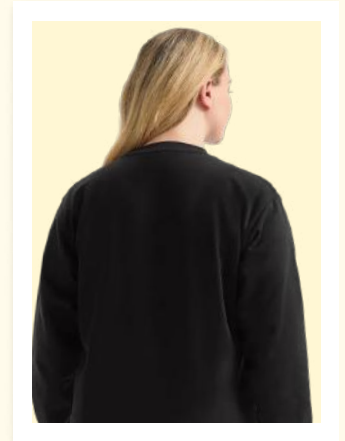


SPECIFICATIONS

60% Cotton, 40% Polyester
 Reactive Dyed
 Contemporary Fit
 Contrast Colour Side Front Panel
 Set in Sleeve
 Twin Needle Stitching on all main seams
 Internal Back Neck Tape in
 Contrast Colour
 Brushed Effect on fabric reverse,
 for superior comfort
 Lycra Ribbed Cuffs, Welt &
 Neck Band

SIZES

XS-4XL



COLOURS

-  Black/Red
-  Black/Charcoal
-  Black/Yellow
-  Charcoal/Black
-  Navy/Red

UC212






DELUXE UNISEX SWEAT JACKET



SPECIFICATIONS

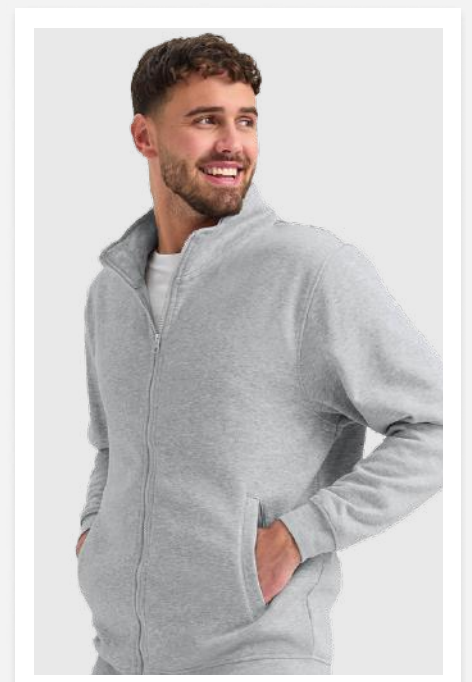
60% Pre-Shrunk Ring Spun Combed
 Cotton 40% Polyester
 Super Soft Luxurious Feel Fabric
 Reactive Dyed
 Brushed Effect for Superior Comfort &
 Look
 Enzyme washed for extra soft hand-feel
 and reduced shrinkage
 Single Welt Pockets
 Cadet Style Collar
 Full Self-Coloured Zip
 Twin Needle Stitching
 Lycra Ribbed Cuffs & Welt
 Taped Neck
 Contemporary Fit
 Charcoal Composition - 50% Cotton /
 50% Polyester

COLOURS

-  Black
-  Charcoal
-  Navy
-  Heather Grey
-  Royal

SIZES

XS-3XL






**BUILT FOR
EVERYDAY**

UC213 New

QUARTER ZIP SWEATSHIRT



 **Navy**
Please scan QR code for more details

SPECIFICATIONS

50% Cotton 50% Polyester
Reactive Dyed
Quarter Zip
Set in Sleeve
Lycra Ribbed Cuffs, Welt
Twin Needle Stitching at Shoulders, Armholes and Sleeves
Brushed Effect for Superior Comfort & Look

SIZES

XS-4XL

COLOURS

-  Black
-  Charcoal
-  Navy





CLASSIC RUGBY SHIRT

UC402 CLASSIC RUGBY SHIRT



SPECIFICATIONS

100% Pre-Shrunk Combed Cotton
Reactive Dyed
Taped Shoulders & Twin Needle Hem
Woven Collar
Cotton Webbing Tape at Neck
and Placket
Rubber Buttons
Ribbed Lycra Cuffs
Self Fabric Facing on Side Vents
Enzyme washed for extra soft hand-feel
and reduced shrinkage

SIZES

XS-3XL

COLOURS



Black



Bottle Green



Navy




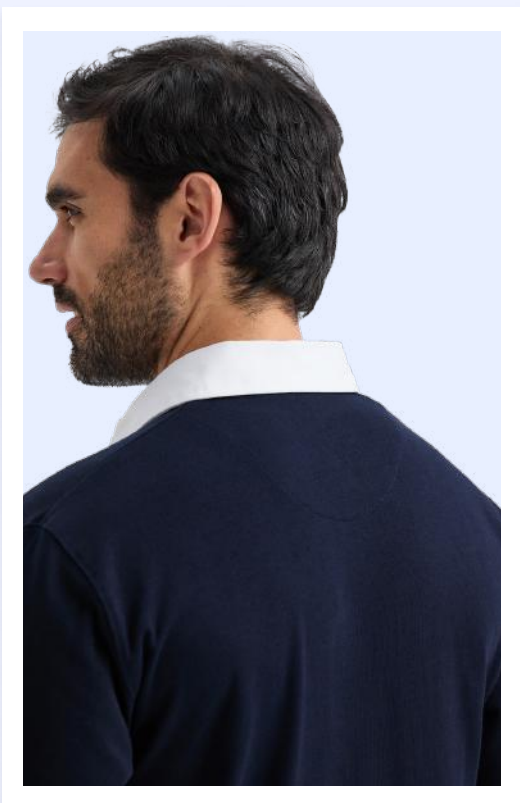
Red



Royal



 **Navy**
Please scan QR code
for more details



HOODED SWEATSHIRTS COLLECTION

UC502	77
UX4	79
UC501	80
UC504	81
UC505	81
UC509	83
UC510	84
UC507	86
UC517	87
UX9	89

UC502
KELLY
GREEN



UC502
ORANGE

UC502
NAVY

UC502
SAPPHIRE



UC502
ORANGE

UC502
SAPPHIRE



AVAILABLE IN
22 COLOURS

UC502 CLASSIC HOODED SWEATSHIRT



SPECIFICATIONS

50% Polyester, 50% Cotton
Reactive Dyed
Lycra Ribbed Cuffs and Welt
Twin Needle Stitching
Taped Neck
Front Pouch Pocket
Double Fabric Hood
Self Coloured Lace Cord
Brushed Effect for Superior Comfort
and Look

SIZES

XS-6XL*

*Brown available in XS-4XL only.

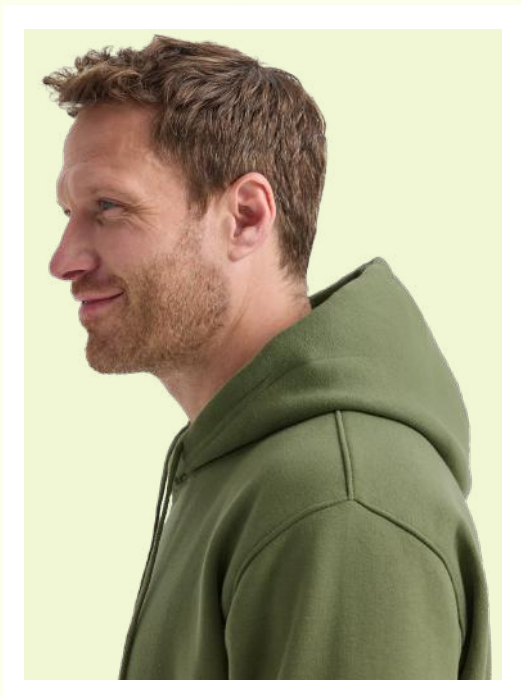
Olive

Please scan QR code
for more details



COLOURS

- | | | |
|--------------|--------------|----------------|
| Black | Bottle Green | Charcoal |
| Heather Grey | Kelly Green | Military Green |
| Olive | Navy | Maroon |
| Orange | Pink | Red |
| Royal | Sky | Violet |
| Brown | Hot Pink | Jade |
| Sapphire | Yellow | Purple |
| White | | |



UX4
SAND

UX4
NAVY

THE UX HOODIE

UX4 THE UX HOODIE



SPECIFICATIONS

50% Polyester, 50% Cotton
Reactive Dyed
Lycra Ribbed Cuffs and Welt
Twin Needle Stitching
Taped Neck
Front Pouch Pocket
Double Jersey Hood Lining
for Extra Comfort
Self-Coloured Cord
Brushed Effect for Superior
Comfort and Look
Contemporary Fit

SIZES

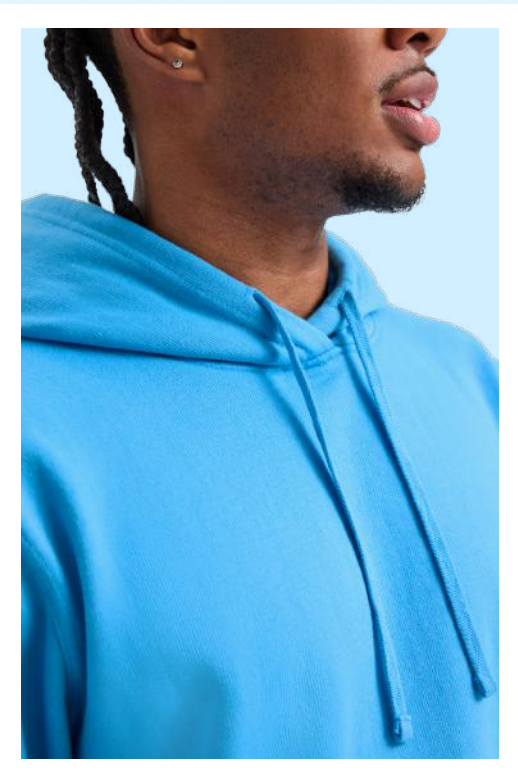
XS-6XL

COLOURS

- | | | |
|--------------|--------------|----------|
| Black | Bottle Green | Charcoal |
| Heather Grey | Navy | Maroon |
| Pink | Red | Royal |
| Sky | Brown | Sand |
| White | | |

Sky

Please scan QR code
for more details



UC501 HEAVYWEIGHT HOODED SWEATSHIRT



SPECIFICATIONS

50% Polyester, 50% Cotton
Reactive Dyed
Lycra Ribbed Cuffs and Welt
Twin Needle Stitching
Taped Neck
Front Pouch Pocket
Double Fabric Hood
Self Coloured Cord
Brushed Effect for Superior
Comfort and Look

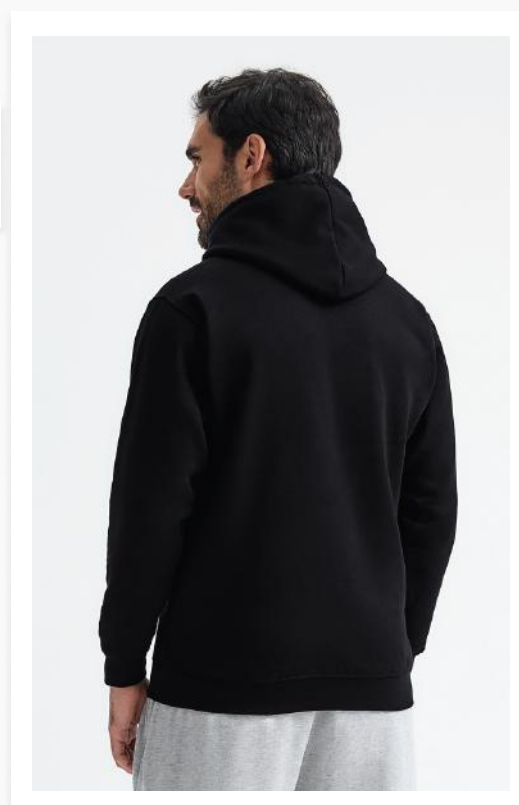
SIZES

XS-4XL

COLOURS



Black
Please scan QR code
for more details



UC504

ADULTS CLASSIC FULL ZIP HOODED SWEATSHIRT

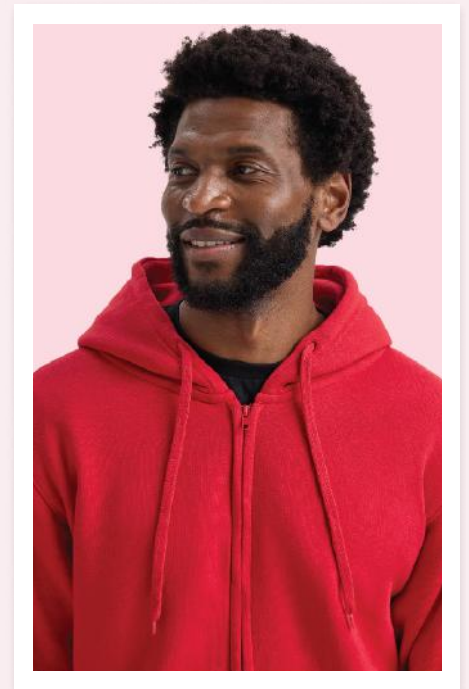


SPECIFICATIONS

50% Polyester, 50% Cotton
 Reactive Dyed
 Lycra Ribbed Cuffs and Welt
 Twin Needle Stitching
 Full Self Coloured Zip
 Taped Neck
 Front Pouch Pocket
 Double Fabric Hood
 Self Coloured Lace Cord
 Brushed Effect for Superior
 Comfort and Look

COLOURS

- | | |
|----------|--------------|
| Black | Bottle Green |
| Charcoal | Heather Grey |
| Navy | Sky |
| Red | Olive |
| Royal | Brown |
| White | Yellow |



SIZES

XS-4XL

UC505

LADIES CLASSIC FULL ZIP HOODED SWEATSHIRT

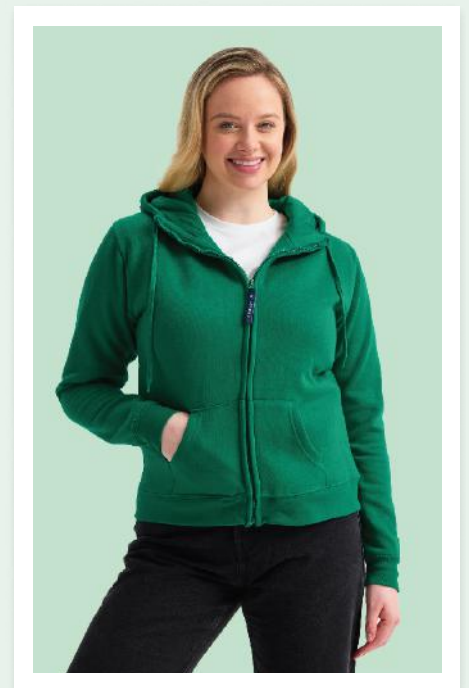


SPECIFICATIONS

50% Polyester, 50% Cotton
 Reactive Dyed
 Lycra Ribbed Cuffs and Welt
 Twin Needle Stitching
 Full Self Coloured Zip
 Taped Neck
 Front Pouch Pocket
 Double Fabric Hood
 Self Coloured Lace Cord
 Brushed Effect for Superior
 Comfort and Look

COLOURS

- | | |
|--------------|----------|
| Black | Charcoal |
| Heather Grey | Navy |
| Kelly Green | Sky |
| Red | Purple |
| Pink | Olive |
| White | |



SIZES

XS-3XL



**DELUXE
HOODED
SWEATSHIRT**

UC509 DELUXE HOODED SWEATSHIRT



SPECIFICATIONS


60% Pre-Shrunk Ring Spun
Combed Cotton
40% Polyester
Super Soft Luxurious Feel Fabric
Reactive Dyed
Lycra Ribbed Cuffs and Welt
Twin Needle Stitching
Taped Neck
Front Pouch Pocket
Double Fabric Hood
Lining for Extra Comfort
Self Coloured Cord
Brushed Effect for Superior Comfort
and Look
Enzyme Washed for Extra Soft Hand
Feel and Reduced Shrinkage
Smart Contemporary Fit

SIZES

XS-5XL*

*5XL available in Black, Bottle Green, Charcoal,
French Navy, Heather Grey, Maroon, Navy, Purple,
Red, Royal and Sky only.

Lime
Please scan QR code
for more details



COLOURS

- | | |
|--------------|---------------|
| Black | Bottle Green |
| Charcoal | Heather Grey |
| Ash | Steel Grey |
| Lime | Amazon Green |
| Kelly Green | French Navy |
| Navy | Brown |
| Cranberry | Maroon |
| Pink | Candy Floss |
| Hot Pink | Red |
| Sizzling Red | Royal |
| Sky | Tropical Blue |
| Reef Blue | Turquoise |
| Sapphire | Purple |
| Yellow | Orange |
| Tiger Gold | White |



UC510 LADIES DELUXE HOODED SWEATSHIRT



SPECIFICATIONS

60% Pre-Shrunk Ring Spun Combed Cotton 40% Polyester
Charcoal Composition
50% Cotton / 50% Polyester
Super Soft Luxurious Feel Fabric
Reactive Dyed
Brushed Effect for Superior Comfort & Look
Enzyme washed for extra soft hand-feel and reduced shrinkage
Front Pouch Pocket
Twin Needle Stitching
Lycra Ribbed Cuffs, Welt & Neck
Taped Neck
Double Fabric Hood with Single Jersey
Hood Lining for Extra Comfort
Self-Coloured Cord
Contemporary Fit

SIZES

XS-2XL

COLOURS



Red

Please scan QR code for more details



UC217
NAVY/RED
Pg: 69

UC117
BLACK/
YELLOW
Pg: 41

UC617
BLACK/RED
Pg: 98

**TWO TONES
ONE TEAM**

UC507 CONTRAST HOODED SWEATSHIRT



Purple/Yellow
Please scan QR code
for more details





SPECIFICATIONS

50% Polyester, 50% Cotton
Reactive Dyed
Lycra Ribbed Cuffs, Welt and Neck
Twin Needle Stitching
Taped Neck
Front Pouch Pocket With Inner Earplugs
Cord Feed
Double Fabric Hood
Inner Hood Coloured Lace Cord
Brushed Effect for Superior
Comfort and Look

SIZES

XS-4XL

COLOURS

- | | |
|---|---|
|  Fuchsia/Heather Grey |  Black/Red |
|  Black/Heather Grey |  Royal/Navy |
|  Navy/Heather Grey |  Purple/Yellow |
|  Heather Grey/Navy |  Lime/Purple |
|  Charcoal/Heather Grey |  White/Fuchsia |
|  Sapphire/Heather Grey |  Navy/Sky |



UC517

TWO TONE HOODED SWEATSHIRT








SPECIFICATIONS

60% Cotton, 40% Polyester
Reactive Dyed
Contemporary Fit
Contrast Colour Side Front Panel
Twin Needle Stitching
Internal Back Neck Tape in
Contrast Colour
Front Pouch Pocket
Double Fabric Hood, with Contrast
Colour on Inside
Hood Panel
Self-Coloured Drawstring Cord on Hood
Brushed Effect on Fabric Reverse for
Superior Comfort
Lycra Ribbed Cuffs & Welt


SIZES

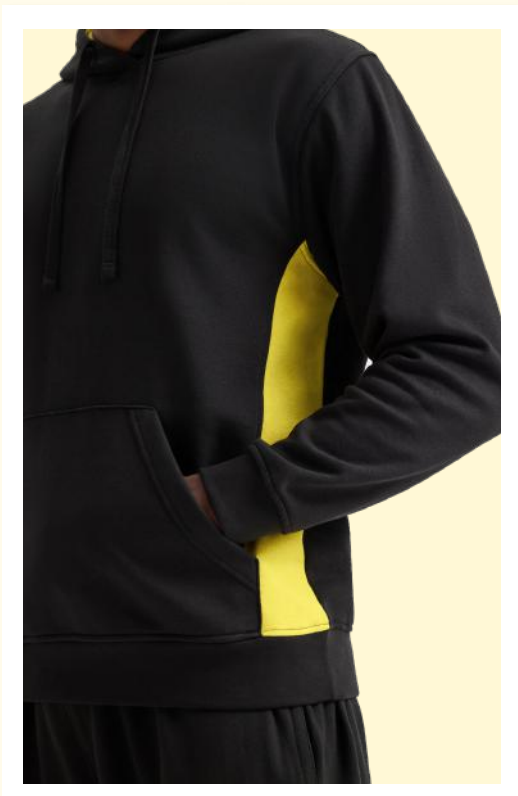
XS-4XL

COLOURS

-  Black/Red
-  Black/Charcoal
-  Black/Yellow
-  Charcoal/Black
-  Navy/Red



 **Black/Yellow**
Please scan QR code
for more details





UX9 THE UX JOGGING PANTS



SPECIFICATIONS

50% Polyester, 50% Cotton
Reactive Dyed
Elasticated Waist with Internal
Drawstring Cord
Elasticated Leg Opening at Hem
Side Hip Pockets
Smart Contemporary Fit

SIZES

XS-2XL

COLOURS

Black

Navy

White

Heather Grey



Navy

Please scan QR code
for more details



UC621
DEEP GREY/
FIERY ORANGE

FLEECES & JACKETS COLLECTION

UC604	93
UC608	94
UC609	95 New
UC601	96
UC602	96
UX5	97
UC617	98
UC612	99
UX10	100
UC610	101 New
UC611	102
UC613	103
UC621	105
UC605	106
UC620	107



UC608
ROYAL



UC604
MAROON



UC604
ROYAL

UC604
RED



UC604

CLASSIC FULL ZIP FLEECE JACKET



SPECIFICATIONS

100% Polyester Super Anti Pill
Micro Fleece
Twin Needle Stitching
Elasticated Cuffs
Full Self Coloured Zip with Zip Puller
2 Self Coloured Covered Zipped Pockets with Zip Pullers
Elasticated Pull Cords and Toggles
Hanger Loop Inside Neck
Cadet Style Collar
Half Moon Yoke

SIZES

XS-6XL*

*4XL available in Black, Bottle Green, Charcoal, Maroon, Navy, Red and Royal.

*5XL & 6XL available in Black and Navy only.

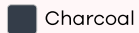
COLOURS



Black



Bottle Green



Charcoal



Maroon



Navy



Red



Royal

Maroon

Please scan QR code for more details



UC608 LADIES CLASSIC FULL ZIP FLEECE JACKET



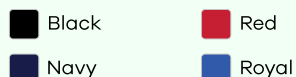
SPECIFICATIONS

100% Polyester Super Anti Pill
Micro Fleece
Twin Needle Stitching
Full Self Coloured Zip with Zip Puller
2 Self Coloured Covered Zipped
Pockets with Zip Pullers
Hanger Loop Inside Neck
Cadet Style Collar
Half Moon Yoke

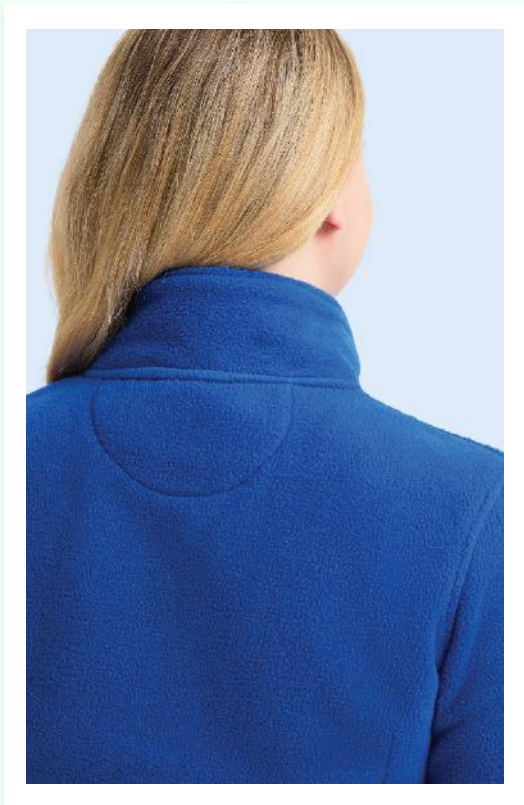
SIZES

XS-4XL

COLOURS



Royal
Please scan QR code
for more details



UC609 New

LIGHTWEIGHT FULL ZIP MICROFLEECE JACKET



SPECIFICATIONS

- 100% Polyester Anti Pill Microfleece
- Adjustable shock cord hem
- 2 Covered Zipped Pockets
- Full front zip fastening
- Cadet Style Collar
- Hemmed Sleeve Opening
- Hanger Loop Inside Neck

SIZES

XS-6XL

COLOURS



Black



Charcoal



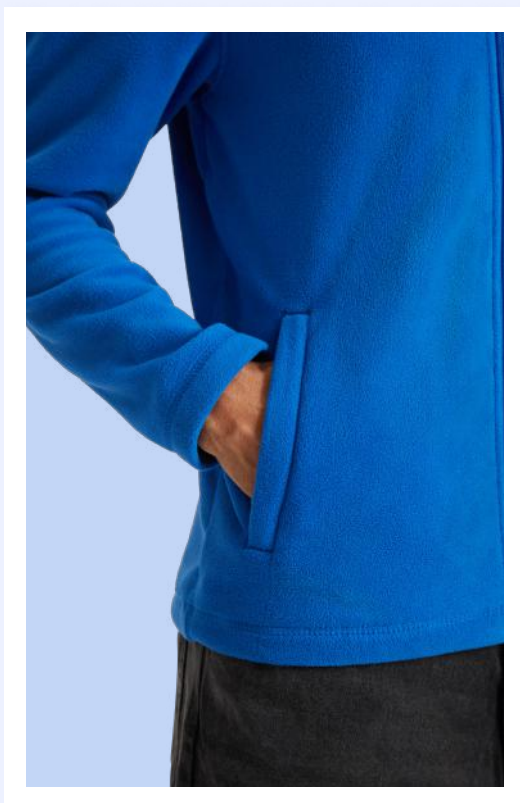
Navy



Royal

Royal

Please scan QR code
for more details



UC601

HEAVYWEIGHT FULL ZIP FLEECE JACKET



SPECIFICATIONS

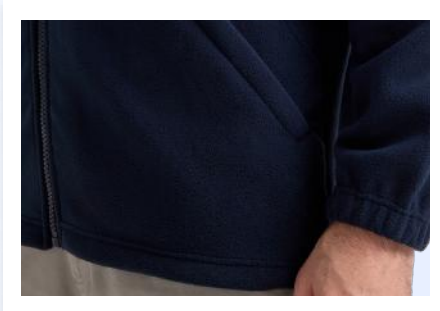
100% Polyester Super Anti Pill
Micro Fleece
Twin Needle Stitching
Elasticated Cuffs
Full Self Coloured Zip with Zip
Puller
2 Self Coloured Covered Zipped
Pockets with Zip Pullers
Elasticated Pull Cords and
Toggles
Hanger Loop Inside Neck
Cadet Style Collar
Half Moon Yoke

SIZES

XS-4XL

COLOURS

- | | |
|----------|--------------|
| Black | Bottle Green |
| Charcoal | Navy |
| Red | Maroon |
| Royal | |



UC602

CLASSIC 1/4 ZIP FLEECE JACKET



SPECIFICATIONS

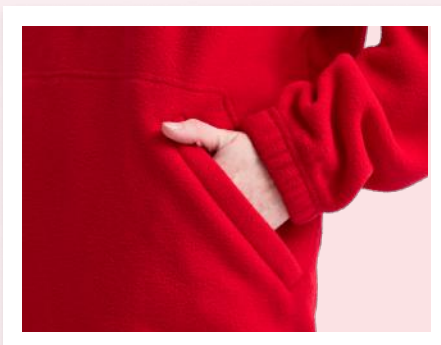
100% Polyester Super Anti Pill
Micro Fleece
Twin Needle Stitching
Elasticated Cuffs
1/4th Self Coloured Zip with
Zip Puller
2 Self Coloured Covered Zipped
Pockets with Zip Pullers
Elasticated Pull Cords and
Toggles
Cadet Style Collar
Half Moon Yoke

SIZES

XS-3XL

COLOURS

- | | |
|-------|--------------|
| Black | Bottle Green |
| Navy | Red |
| Royal | |



UX5

THE UX FULL ZIP FLEECE JACKET



SPECIFICATIONS

100% Polyester Super Anti Pill
Micro Fleece
Twin Needle Stitching
Elasticated Cuffs
Full Self Coloured Zip with
Zip Puller
2 Self Coloured Zipped Pockets
Hanger Loop Inside Neck
Cadet Style Collar
Contemporary Fit

SIZES


XS-4XL

COLOURS

 Black

 Bottle Green

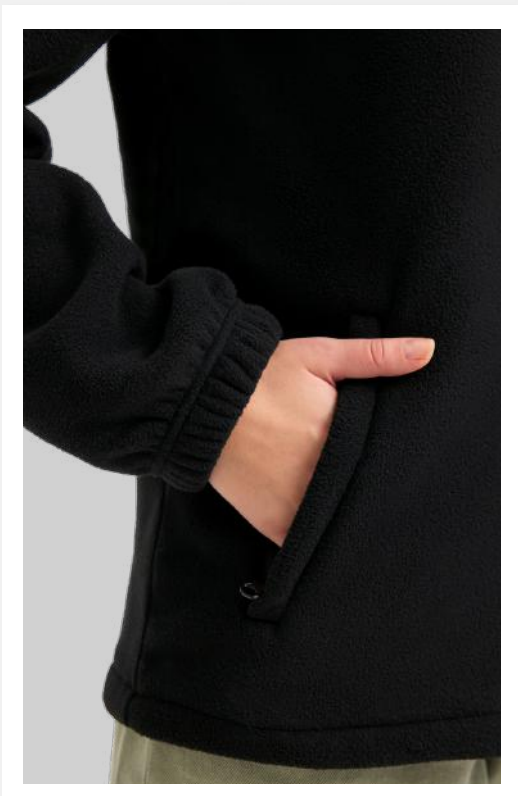
 Navy

 Charcoal

 Royal

Black

Please scan QR code
for more details



UC617 TWO TONE FULL ZIP FLEECE JACKET



Navy/Red

Please scan QR code
for more details


SPECIFICATIONS

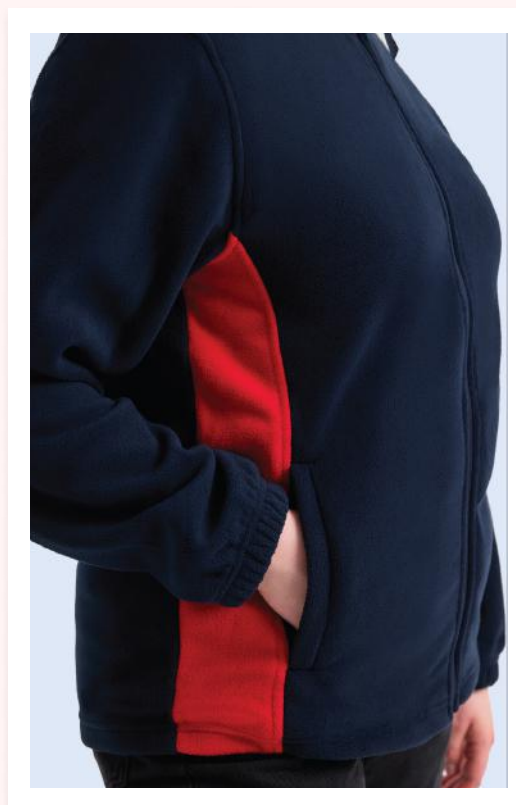
100% Polyester Anti Pill Micro Fleece
Contemporary Fit
Contrast Colour on Front Side Panel
Full Front Zip Fastener with Puller
Vertical Welt Pockets with Zip Closure
Cadet Style Collar with Contrast Colour
on Inside Panel
Internal Back Neck Tape in
Contrast Colour
Twin Needle Stitching on all
main seams
Elasticated Cuffs
Hanger Loop Inside Neck

SIZES

XS-4XL

COLOURS

- | | |
|--|--|
|  Black/Red |  Black/Charcoal |
|  Black/Yellow |  Charcoal/Black |
|  Navy/Red | |



UC612

CLASSIC FULL ZIP SOFT SHELL JACKET



SPECIFICATIONS

3 Layer Waterproof 10000 mm
Bonded Fabric
Outer Layer: 93% Polyester, 7% Elastane
Mid Layer: TPU Waterproof,
Breathable and Windproof Membrane
Inner Layer: Micro fleece for
Extra Warmth
Inner Storm Flap
Full Self Coloured Water Resistant
Zipper with Puller
2 Zipped Pockets on the front with
Water Resistant Zippers
Adjustable Hem with Toggles
Hanger Loop

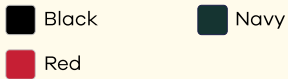
SIZES

XS-6XL*

*4XL available in Black, Navy and Red only.

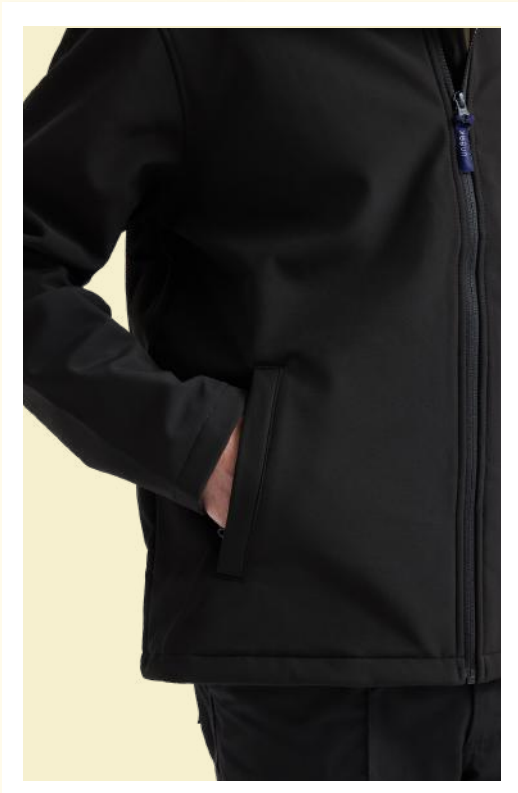
*5XL & 6XL available in Black and Navy only.

COLOURS



Black

Please scan QR code
for more details



UX10

THE UX PRINTABLE SOFT SHELL JACKET



SPECIFICATIONS

3 Layer Bonded Fabric,
Waterproof to 10,000mm
Outer Layer - 93% Polyester,
7% Elastane
Mid Layer - TPU Waterproof,
Breathable and Windproof
Membrane
Inner Layer - Microfleece -
100% Polyester
Full Self-Coloured Waterproof
Zip with Zip Puller
2 Self-Coloured Covered
Zipped Pockets
Hanger Loop Inside Neck
Wind Resistant
Contemporary Fit

SIZES

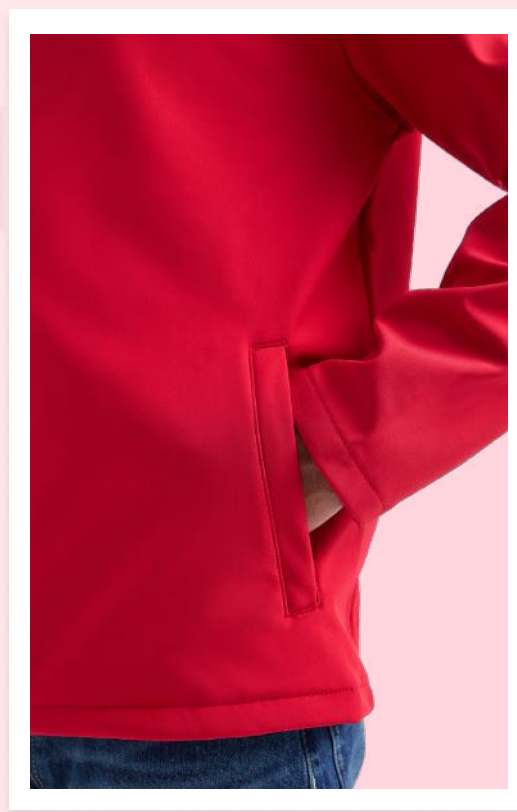
XS-5XL

COLOURS

Black Bottle Green Charcoal
Light Grey Navy Red

 Red

Please scan QR code
for more details



UC610 New

LIGHTWEIGHT QUARTER ZIP MICROFLEECE JACKET



SPECIFICATIONS

100% Polyester Anti Pill Microfleece
Quarter zip fastening
Cadet Style Collar
Hemmed Sleeve Opening
Hanger Loop Inside Neck

SIZES

XS-6XL

COLOURS

 Black

 Charcoal

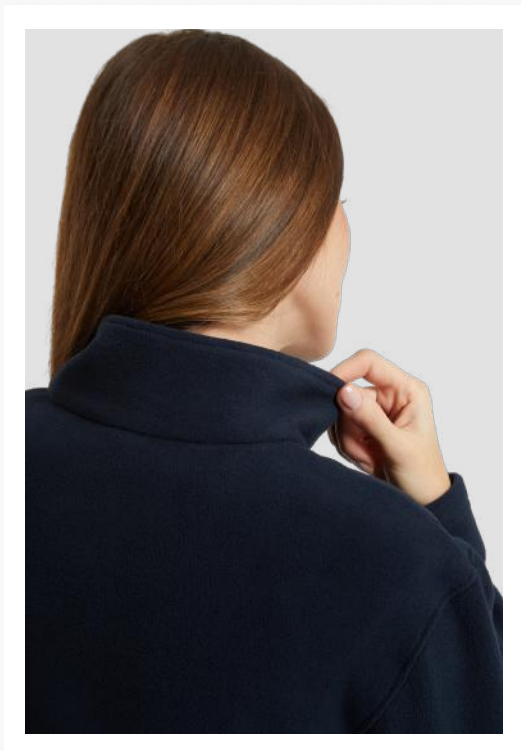
 Navy

 Royal



Navy

Please scan QR code for more details



UC611 DELUXE FULL ZIP SOFT SHELL JACKET



SPECIFICATIONS

3 Layer Waterproof 10000 mm Bonded Fabric
Outer Layer: 93% Polyester, 7% Elastane
Mid Layer: TPU Waterproof, Breathable and Windproof Membrane
Inner Layer: Microfleece for Extra Warmth
Inner Storm Flap
Concealed Inner Embroidery Access for Back Yoke
Concealed Inner Embroidery Access for Front Left Breast as Worn
Full Self Coloured Water Resistant Zipper with Puller
3 Zipped Pockets on the front with Water Resistant Zippers
Adjustable Hem with Toggles
2 Inner Pouch Pockets
Inner Cell Phone Pocket

SIZES

XS-4XL

COLOURS



Light Grey
Please scan QR code for more details



UC613 LADIES CLASSIC FULL ZIP SOFT SHELL JACKET



SPECIFICATIONS

3 Layer Waterproof 10000 mm
Bonded Fabric
Outer Layer: 93% Polyester,
7% Elastane
Mid Layer: TPU Waterproof, Breathable
and Windproof Membrane
Inner Layer: Microfleece for
extra Warmth
Full Self Coloured Water Resistant
Zipper with Puller
2 zipped pockets on the front
with waterproof Zipper
Hanger Loop

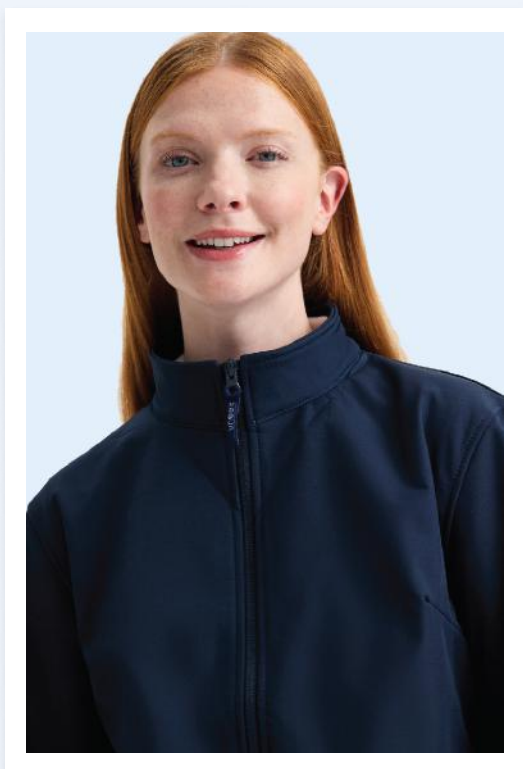
SIZES

XS-2XL

COLOURS

Black Navy Red

Navy
Please scan QR code
for more details





DELUXE OUTDOOR JACKET

UC621 DELUXE OUTDOOR JACKET




SPECIFICATIONS

Main Fabric: 100% Polyester
Waterproof Coated Fabric with
a Water Penetration Rating of
5000 mm (200 gsm)
Lining: 220 gsm 100% Polyester
Super Soft Micro Fleece Lining
or Comfort & Warmth
Insulated Sleeves with
Articulated Elbows for Better Fit
& Ease of Movement
Fleece Lined Collar
Two Lower Zipped Pockets
Concealed Zipped
Embroidery Access
Concealed Hood with Adjustable
Toggles & Velcro Adjustable Flap
Secure Inner Patch Pocket
Hem with 2 Adjustable Shock Cords
Adjustable Cuffs
Windproof
Taped Seams
Hanger Loop
Smart Contemporary Fit

SIZES

XS-4XL

COLOURS

-  Deep Grey/Fiery Orange
-  Black/Submarine Yellow
-  Navy/Red

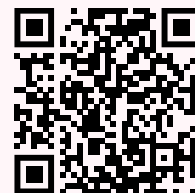



Deep Grey/Fiery Orange

Please scan QR code
for more details



UC605 CLASSIC REVERSIBLE FLEECE JACKET



 **Red**
Please scan QR code
for more details

SPECIFICATIONS

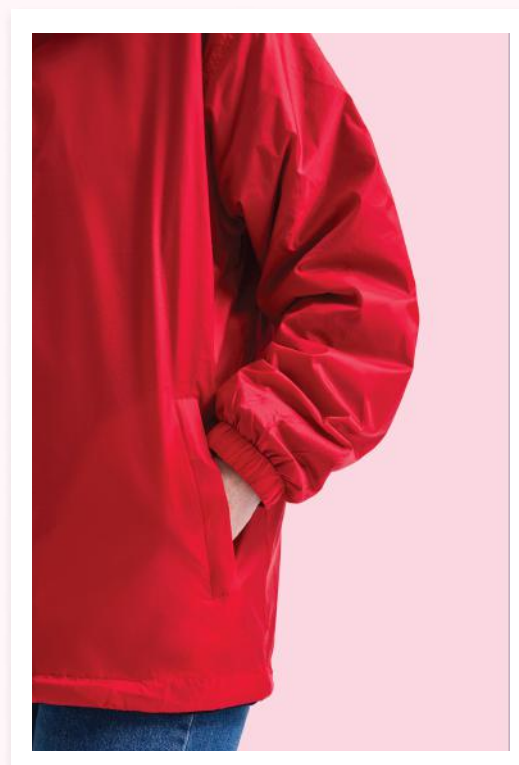
- 100% Polyester
- Coated Rainproof Nylon Reverse
- Concealed Hood
- 2 Self Coloured Covered Zipped Pockets
- Full Self Coloured Zip with Zip Puller
- Elasticated Cuffs, Pull Cords and Toggles
- Stud fasten Hem for Embroidery and Printing Access
- Windproof
- Hanger Loop

SIZES

XS-3XL

COLOURS

-  Black
-  Bottle Green
-  Navy
-  Red



UC620 PREMIUM OUTDOOR JACKET



SPECIFICATIONS

Main Fabric: 100% Polyester Waterproof
Coated Fabric with
a Water Penetration Rating of
5000 mm (200 gsm)
220 gsm 100% Polyester Super
Soft Micro Fleece Lining for Comfort
& Warmth
Insulated Sleeves
Fleece Lined Collar
Two Lower Zipped Pockets
Concealed Zipped
Embroidery Access
Concealed Hood with Adjustable
Toggles & Velcro Adjustable Flap
Secure Inner Patch Pocket
Elasticated Hem
Adjustable Cuffs
Windproof
Taped Seams
Hanger Loop
Smart Contemporary Fit

SIZES

XS-4XL

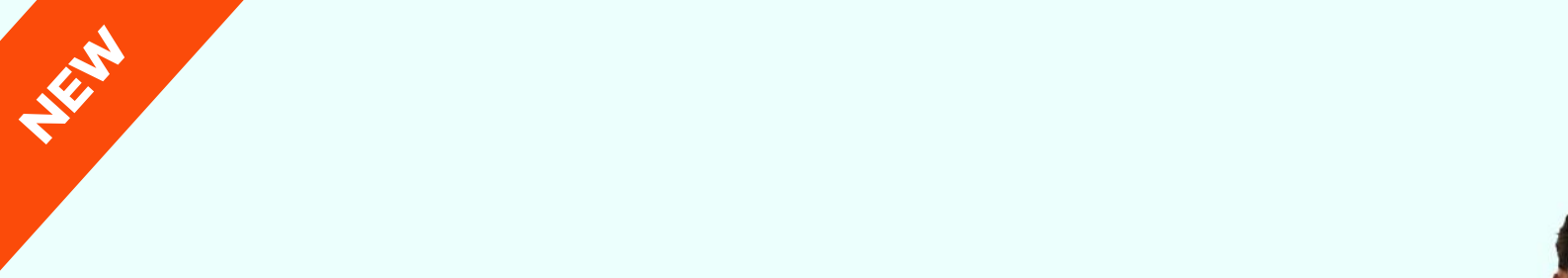
COLOURS

-  Black/Grey
-  Deep Grey/Black
-  Navy

Navy

Please scan QR code
for more details





NEW

GILETS AND BODYWARMERS


- UC614 110 New
- UC615 111 New
- UC616 112 New
- UC618 113 New
- UC619 114 New
- UC640 115 New



UC614 New

PRINTABLE SOFTSHELL GILET



 **Navy/Royal**
Please scan QR code for more details

SPECIFICATIONS

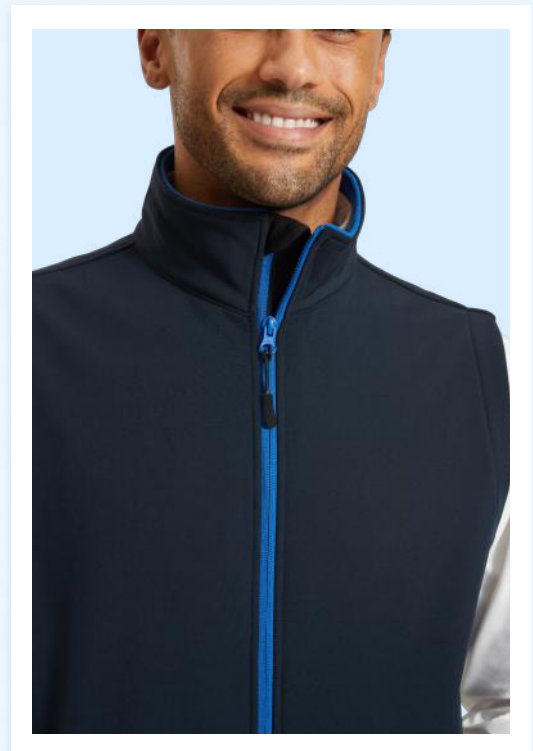
2 layer Softshell Fabric (Outer-layer: 100% Polyester, Inner-layer: 100% Polyester microfleece)
YKK Zipper
Internal facing to hide embroidery back-stitch below back neckline
Microfleece inner for extra warmth
Stand Up Collar with chin guard
Easy to print elastane-free fabric
2 Zipped Pockets
Showerproof. Breathable. Windproof.

SIZES

XS-6XL

COLOURS

-  Black/Black
-  Charcoal/Black
-  Navy/Royal
-  Navy/Navy
-  Red/Black



UC615 New

LADIES PRINTABLE SOFTSHELL GILET



SPECIFICATIONS

2 layer Softshell Fabric (Outer-layer: 100% Polyester, Inner-layer: 100% Polyester microfleece)
YKK Zipper
Internal facing to hide embroidery back-stitch below back neckline
Microfleece inner for extra warmth
Stand Up Collar with chin guard
Easy to print elastane-free fabric
2 Zipped Pockets
Showerproof. Breathable. Windproof.

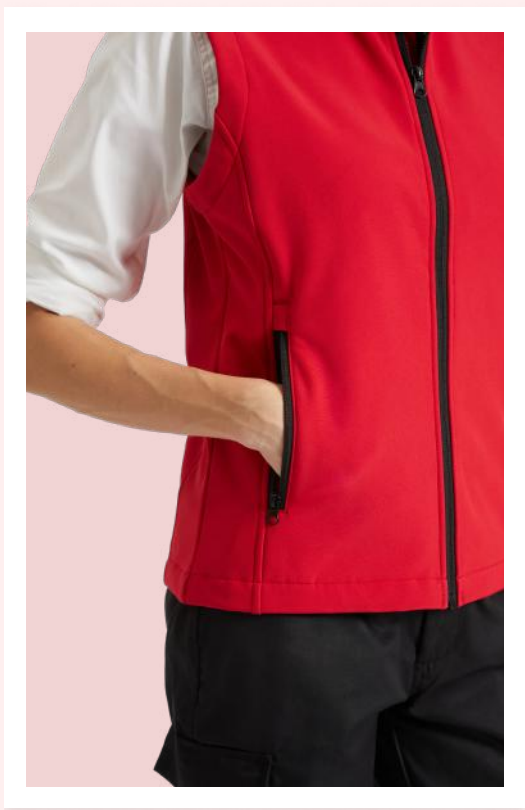
SIZES

XS (8)-6XL (26)

COLOURS

- Black/Black
- Charcoal/Black
- Navy/Royal
- Navy/Navy
- Red/Black

Red/Black
Please scan QR code for more details



UC616 New

PREMIUM PRINTABLE SOFTSHELL GILET



Charcoal
Please scan QR code
for more details

SPECIFICATIONS

2 layer Softshell Fabric (Outer-layer: 100% Polyester, Inner-layer: 100% Polyester microfleece)
YKK Zipper
Internal facing to hide embroidery back-stitch below back neckline
Microfleece inner for extra warmth
Full front zip fastening
Stand Up Collar with chin guard
Easy to print elastane-free fabric
2 Covered Zipped Pockets and 1 Covered Zipped Chest Pocket (Right Side Chest as Worn)
Elasticated Pull Cords & Toggles
Showerproof. Breathable. Windproof.

SIZES

XS-6XL

COLOURS

-  Black
-  Charcoal
-  Navy



UC618 New

MICROFLEECE GILET



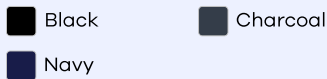
SPECIFICATIONS

100% Polyester Anti Pill Microfleece
Armhole and Hem finished with Self Colour
Binding
2 Covered Zipped Pockets
Full front zip fastening

SIZES

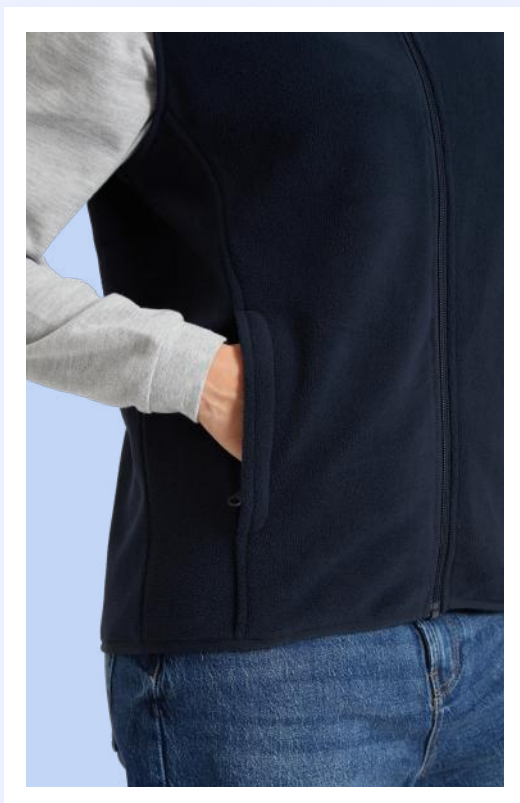
XS-6XL

COLOURS



Navy

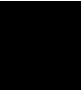
Please scan QR code
for more details



UC619 New

PADDED BODYWARMER



 **Black**
Please scan QR code for more details

SPECIFICATIONS

Fabrication: Outer Fabric: 210T Polyester with A/C coating, 55GSM.

Inner Lining Fabric: 100% Polyester, 55 GSM 6.3 oz polyfill wadding, 180 GSM

Quick drying

Full front zip fastening

YKK Zipper

Front storm flap

Deep cut arm holes for added comfort

2 front pockets

Internal patch pocket

Extended Curved Back

Water Repellent. Windproof

Lightweight

SIZES

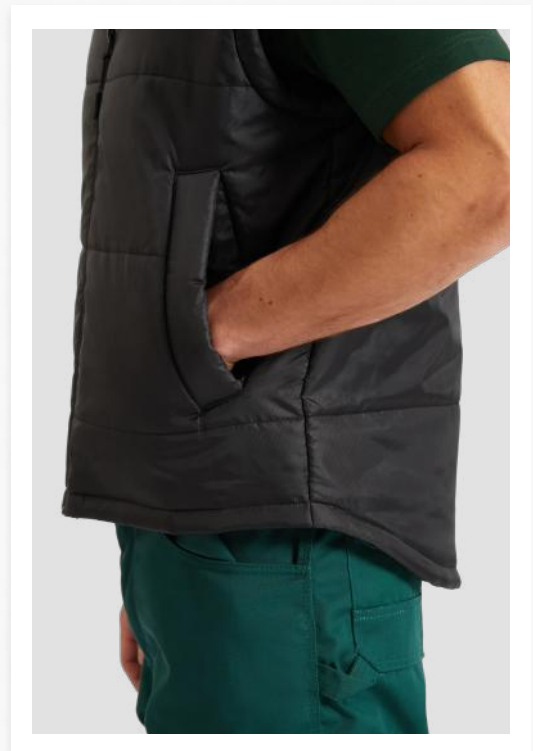
XS-6XL

COLOURS

 Black

 Charcoal

 Navy



UC640 SUPER PRO BODY WARMER



SPECIFICATIONS

Main Fabric: 250 gsm
100% Polyester Water Repellent
Coated Fabric
Zip Front Fastening with Snap
Buttoned Storm Flap
Insulated Lining for Extra Warmth
Secure Front Pockets with
Spacious Hand Warmer Pockets and
One Triple Slot Tool Pocket
Radio Loop
Phone Pocket
2 Pen Slots
Secure Inner Pocket
Embroidery Access Zipper
Hanger Loop
Smart Contemporary Fit

SIZES

S-3XL

COLOURS



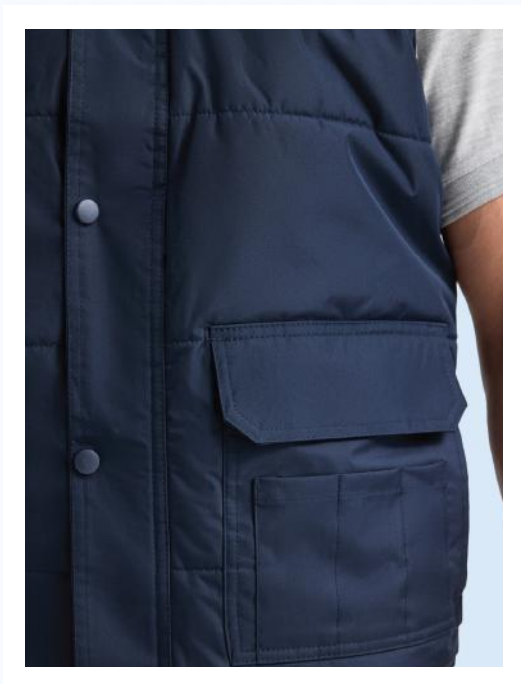
Black



Navy

Navy

Please scan QR code
for more details





SHIRTS COLLECTION

- UC701 117
- UC703 118
- UC702 119
- UC704 119

UC701 MENS PINPOINT OXFORD FULL SLEEVE SHIRT



SPECIFICATIONS

70% Combed Cotton, 30% Polyester
Pin Point Oxford Weave
Wrinkle Free Fabric
Long Sleeve
Button Down Fused Collar
Chest Pocket (left side as worn)
Adjustable Cuffs
Shirt Tail Bottom
Inverted Pleat at the Back
for Movement
Two Spare Buttons
Double Folded Seams

SIZES

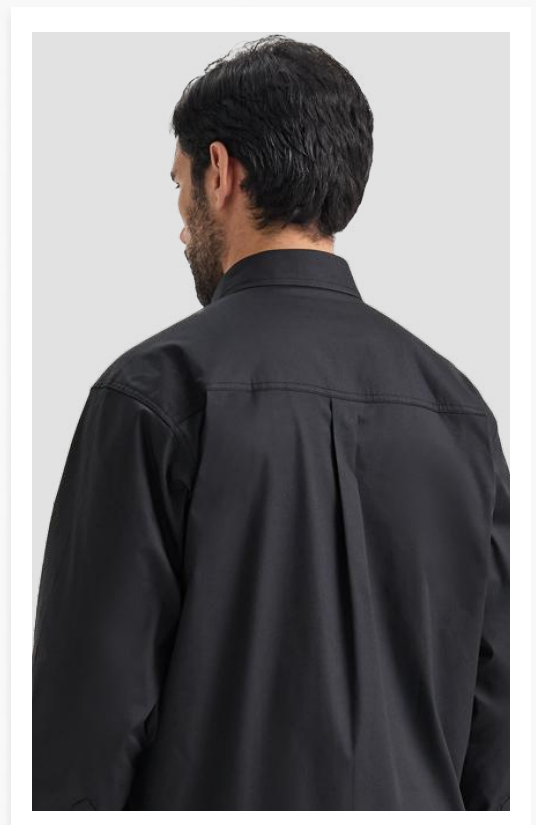
S-3XL

COLOURS

- | | |
|----------|------------|
| Black | Light Blue |
| Mid Blue | Navy |
| Charcoal | White |

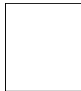
Black

Please scan QR code
for more details



UC703 LADIES PINPOINT OXFORD FULL SLEEVE SHIRT



 **White**
Please scan QR code
for more details






SPECIFICATIONS

70% Combed Cotton, 30% Polyester
Classic Collar
Pin Point Oxford Weave
Wrinkle Free Fabric
Long Sleeve
Lap Fell Side and Sleeve Seams
Inverted Pleat at the Back for Movement
Tailored Fit
Adjustable Cuffs

SIZES

XS-5XL

COLOURS

-  Black
-  Light Blue
-  Navy
-  Silver Grey
-  White



UC702

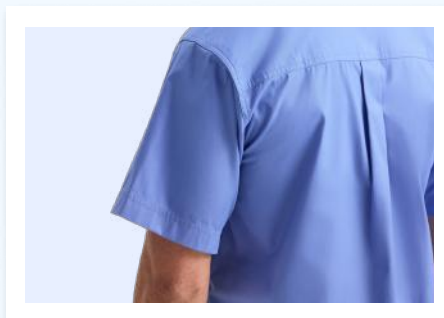
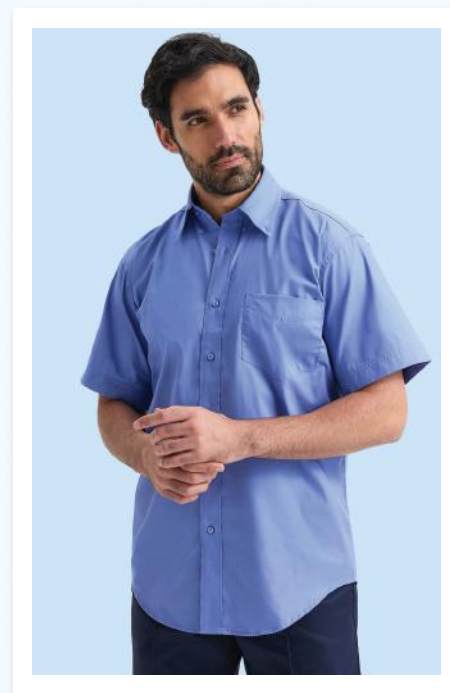
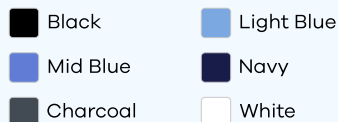
MENS PINPOINT OXFORD HALF SLEEVE SHIRT



SPECIFICATIONS

70% Combed Cotton, 30% Polyester
 Pin Point Oxford Weave
 Wrinkle Free Fabric
 Button Down Fused Collar
 Pocket on Left Breast
 Shirt Tail Bottom
 Inverted Pleat at the Back for Movement
 Two Spare Buttons
 Double Folded Seams
 Short Sleeve

COLOURS



SIZES

S-3XL

UC704

LADIES PINPOINT OXFORD HALF SLEEVE SHIRT



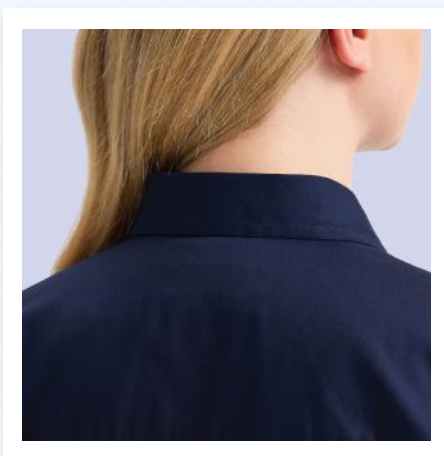
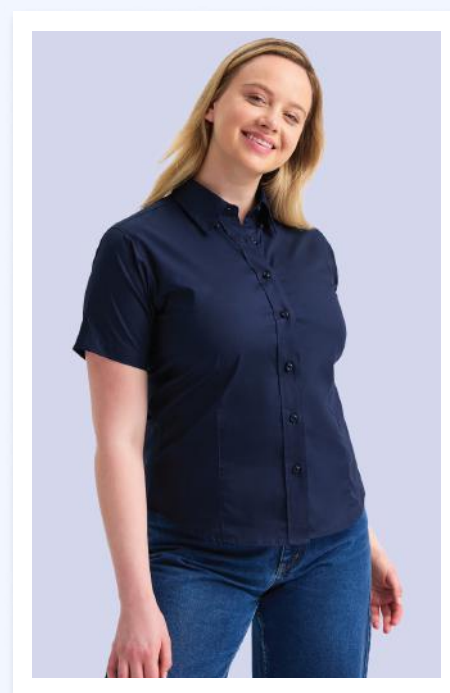
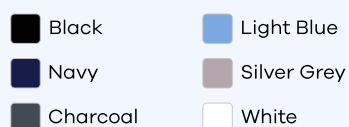
SPECIFICATIONS

70% Combed Cotton, 30% Polyester
 Button Down Collar
 Pin Point Oxford Weave
 Wrinkle Free Fabric
 Short Sleeve
 Tailored Fit with Rounded Hem

SIZES

XS-5XL

COLOURS



UC810
ORANGE

HI VIS COLLECTION

UC801
YELLOW

UC801	123
UC808	125
UC810	127
UC802	128
UC803	129
UC804	130
UC807	131



**UC808
YELLOW**



**UC804
ORANGE**



UC801
ORANGE

UC801
YELLOW

HI VIS SAFETY WAISTCOAT

UC801 HI VIS SAFETY WAISTCOAT



SPECIFICATIONS

EN ISO 20471 Class 2 Approved
RIS-3279-TOM Issue 2 for Rail Industry
(Orange Only, non-tear away)
Conforms to PPE Regulation EU
2016/425 Category II
UKCA Certified
CE Certified
100% Polyester
Dark Grey Polyester Bound Edges
2 Band & 2 Brace
2 Retro Reflective Strips (50mm wide)
stitched on around body and 1 over
each shoulder
Velcro Fastening
Washable 25X

SIZES

S-5XL*

*5XL available in Yellow only.

COLOURS



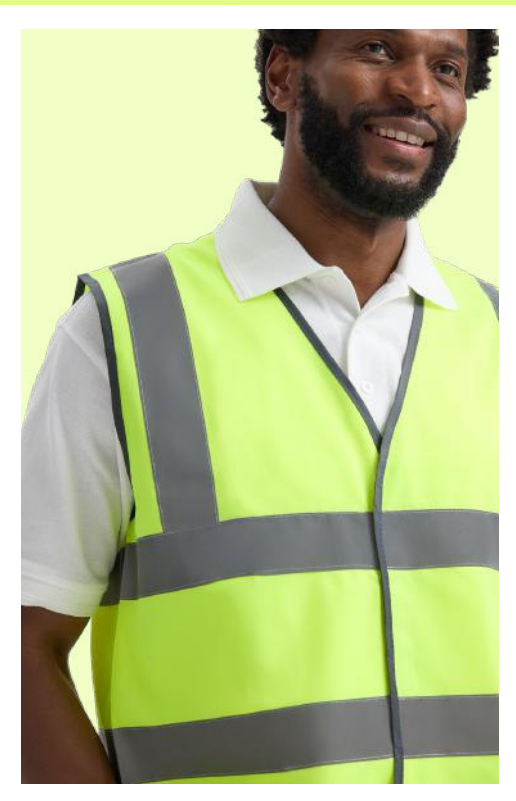
Yellow



Orange

Yellow

Please scan QR code
for more details





**HI VIS
POLOSHIRT**

UC808 HI VIS SHORT SLEEVE POLOSHIRT



SPECIFICATIONS

EN ISO 20471 Class 2 Approved
RIS-3279-TOM Issue 2 for Rail Industry
(Orange Only)
Conforms to PPE Regulation EU
2016/425 Category II
UKCA Certified
CE Certified
100% Recycled Polyester Textured
Breathable Fabric with Wicking
Properties
Breathable fabric draws moisture away
from the body to keep the wearer
comfortable, cool and dry
2 Band & 2 Brace
2 Retro Reflective Strips (50mm wide)
stitched on around body and 1 over
each shoulder
Ribbed Contrast Collar with double
fluorescent stripes
3 Button placket
40+ UPF rated fabric to block 98% of UV
rays
Washable 25X

Yellow

Please scan QR code
for more details



SIZES

S-5XL

COLOURS



Yellow



Orange





UC810
ORANGE

HI VIS T-SHIRT

UC810 HI VIS SHORT SLEEVE T-SHIRT



SPECIFICATIONS

EN ISO 20471 Class 2 Approved
RIS-3279-TOM Issue 2 for Rail Industry
(Orange Only)
Conforms to PPE Regulation EU
2016/425 Category II
UKCA Certified
CE Certified
100% Recycled Polyester Textured
Breathable Fabric with Wicking
Properties
Breathable fabric draws moisture away
from the body to keep the wearer
comfortable, cool and dry
2 Band & 2 Brace
2 Retro Reflective Strips (50mm wide)
stitched on around body and 1 over
each shoulder
40+ UPF rated fabric to block 98% of UV
rays
Washable 25X

SIZES

S-5XL

COLOURS



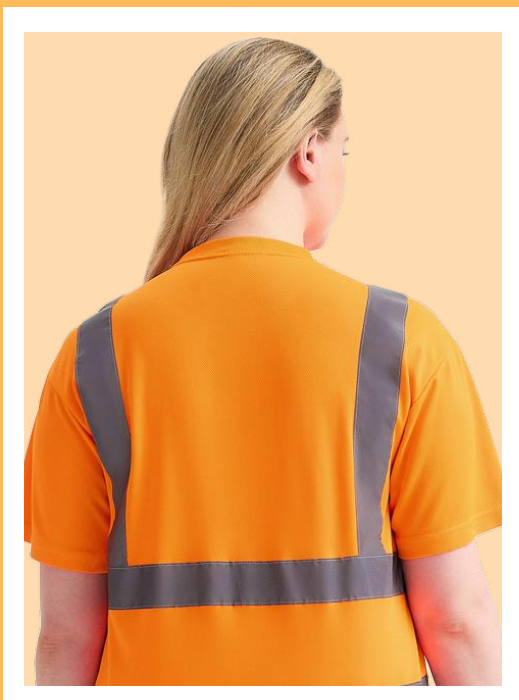
Yellow



Orange

Orange

Please scan QR code
for more details



UC802 LONG SLEEVE HI VIS SAFETY WAISTCOAT



120
GSM



Yellow

Please scan QR code
for more details

SPECIFICATIONS


EN ISO 20471 Class 3 Approved
RIS-3279-TOM Issue 2 for Rail Industry
(Orange Only, non-tear away)
Conforms to PPE Regulation EU
2016/425 Category II
UKCA Certified
CE Certified
100% Polyester
Dark Grey Polyester Bound Edges
2 Band & 2 Brace
2 Retro Reflective Strips (50mm wide)
stitched on around body, arms and 1
over each shoulder
Velcro Fastening
Washable 25X

SIZES

S-4XL

COLOURS

 Yellow

 Orange



UC803 HI VIS ROAD SAFETY JACKET



SPECIFICATIONS

EN ISO 20471 Class 3 Approved
EN 343 Class 3:1 X Approved
RIS-3279-TOM Issue 2 for Rail Industry
(Orange Only)
Conforms to PPE Regulation EU
2016/425 Category II
UKCA Certified
CE Certified
Outer Fabric 300 Denier 100% Polyester
PU Coated
Waterproof Taped Seams
2 Retro Reflective Strips (50mm wide)
stitched on around body, arms and 1
over each shoulder
Hood with drawcord under collar
1 Zipped inner pocket under flap near
chest
1 Inner pocket & 2 outer pockets with
studded flap
Phone pocket on right breast as worn
Embroidery Access at Hem
Padded & Lined
Washable 25X


SIZES

S-5XL*

*5XL available in Yellow only.

COLOURS

 Yellow

 Orange




Yellow

Please scan QR code
for more details



UC804 HI VIS BOMBER JACKET



 **Orange**
Please scan QR code
for more details

SPECIFICATIONS

EN ISO 20471 Class 3 Approved
EN 343 Class 3:1 X Approved
RIS-3279-TOM Issue 2 for Rail Industry
(Orange Only)
Conforms to PPE Regulation EU
2016/425 Category II
UKCA Certified
CE Certified
Outer Fabric 300 Denier 100% Polyester
PU Coated
Waterproof Taped Seams
2 Retro Reflective Strips (50mm wide)
stitched on around body, arms and 1
over each shoulder
Hood with drawcord under collar
1 Inner pocket and 2 outer inset pockets
Phone pocket on right breast as worn
Embroidery Access at Hem
Padded and Lined
Washable 25X

SIZES

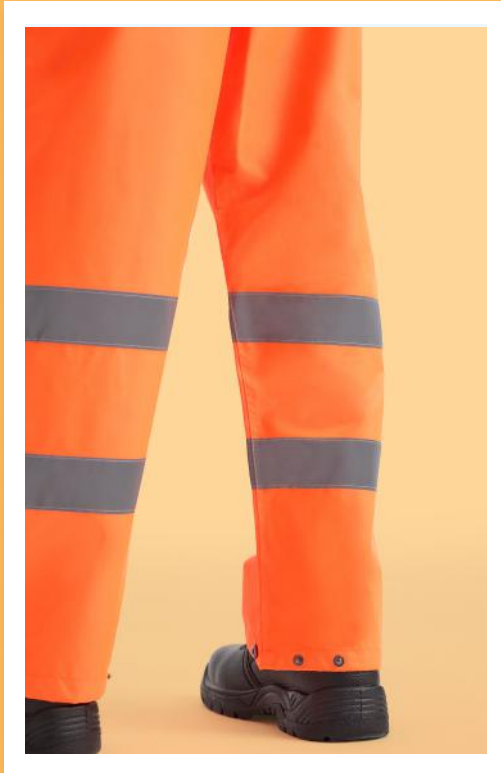
S-4XL

COLOURS

 Yellow  Orange



UC807 HI VIS TROUSER



SPECIFICATIONS

EN ISO 20471 Class 1 Approved
EN 343 Class 3:1 X Approved
RIS-3279-TOM Issue 2 for Rail Industry
(Orange Only)
Conforms to PPE Regulation EU 2016/425
Category II
UKCA Certified
CE Certified
300 Denier 100% Polyester PU Coated Fabric
Two Front Pockets
Fully Elasticated Waist
Adjustable Ankle
Washable 25X
Shower Proof

SIZES

XS-5XL

COLOURS

 Yellow

 Orange



KIDS COLLECTION

UC103	135
UC116	136
UC306	137
UC202	139
UC206	140
UC207	141
UX7	142
UC503	143
UC506	144
UC521	145
UC603	146
UC806	147
UX8	149





**UX7
PINK**



**UC306
SKY**



UC103 CHILDRENS CLASSIC POLOSHIRT



SPECIFICATIONS

50% Polyester, 50% Cotton
Reactive Dyed
Knitted Collar and Hemmed Sleeve
Taped Neck
Name Tag on Neck Label
3 Self Coloured Button Placket
Enzyme washed for extra soft
hand-feel and reduced shrinkage

SIZES

2 YRS - 11/13 YRS

COLOURS

Black	Bottle Green
Maroon	Heather Grey
Navy	Sky
Red	Purple
Royal	Brown
Yellow	White

White

Please scan QR code
for more details



UC116 CHILDRENS ACTIVE COTTON POLOSHIRT



SPECIFICATIONS

100% Pre-Shrunk Ringspun
Combed Cotton
Reactive Dyed
Knitted Collar and Cuff
Taped Neck
Twin Needle Stitching on Hem
Washable at 40 Degrees
2 Self Coloured Button Placket
Name Tag on Neck Label

SIZES

3/4 YRS - 11/13 YRS

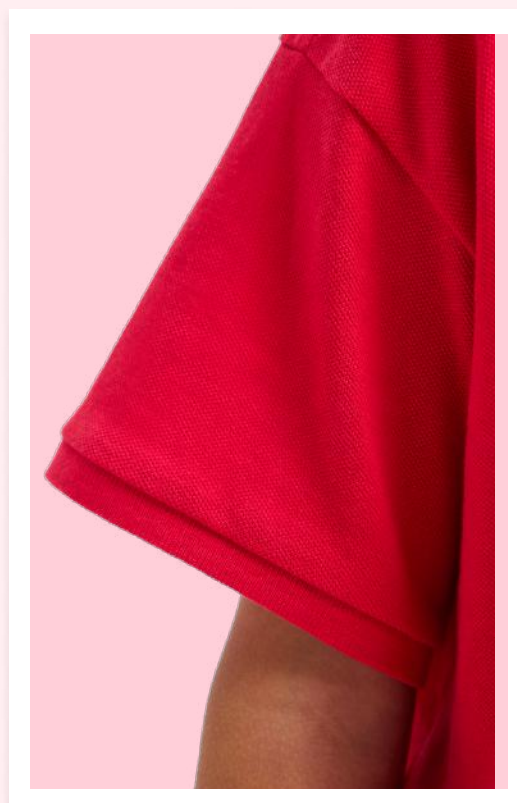
COLOURS

- | | |
|-------------|--------------|
| Black | Bottle Green |
| French Navy | Navy |
| Sky | Red |
| Royal | Yellow |
| White | |



Red

Please scan QR code
for more details



UC306 CHILDRENS CLASSIC T-SHIRT



SPECIFICATIONS

100% Cotton
Reactive Dyed
Crew Neck
Internal Tape on Back Neck
and Shoulder Seam
Twin Needle Stitching on
Sleeve and Hem
Enzyme washed for extra soft
hand-feel and reduced shrinkage

SIZES

2 YRS - 11/13 YRS

COLOURS



Black



Bottle Green



Heather Grey



Navy



Sky



Red



Royal



Yellow



White

Sky


Please scan QR code
for more details





UC202 CHILDRENS CLASSIC SWEATSHIRT



 **Black**
Please scan QR code for more details












SPECIFICATIONS

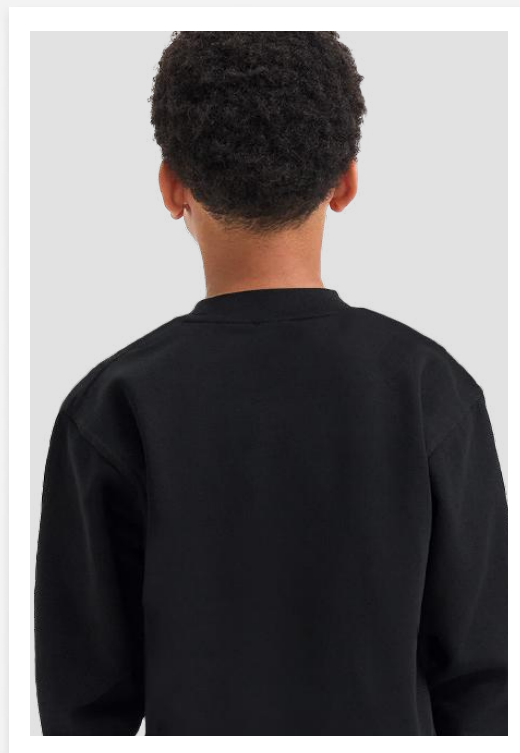
50% Polyester 50% Cotton
Reactive Dyed
Lycra Ribbed Cuffs, Welt & Neck
Taped Neck
Name Tag on Neck Label
Twin Needle Stitching
Long Sleeve
Set in Sleeve
Brushed Effect for Superior
Comfort & Look
Enzyme washed for extra soft
hand feel and reduced shrinkage

SIZES

2 YRS - 11/13 YRS

COLOURS

- | | |
|---|--|
|  Black |  Bottle Green |
|  Brown |  Heather Grey |
|  Maroon |  Navy |
|  Purple |  Royal |
|  Red |  Sky |
|  Yellow | |



UC206 CHILDRENS CLASSIC V-NECK SWEATSHIRT



Brown
Please scan QR code
for more details

SPECIFICATIONS

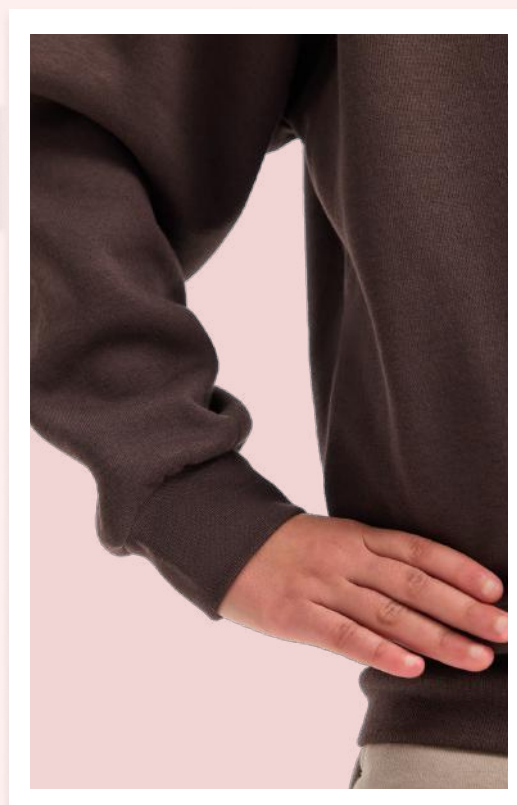
50% Polyester, 50% Cotton
Reactive Dyed
Lycra Ribbed Cuffs, Welt and Neck
V-Neck
Set in Sleeve
Twin Needle Stitching at Neck,
Shoulders, Armholes and Sleeves
Long Sleeve
Brushed Effect for Superior
Comfort and Look
Name Tag on Neck Label
Enzyme washed for extra soft hand feel
and reduced shrinkage

SIZES

2 YRS - 11/13 YRS

COLOURS

- | | | |
|-------|--------------|--------|
| Black | Bottle Green | Purple |
| Navy | Sky | Red |
| Royal | Brown | Maroon |



UC207 CHILDRENS CLASSIC CARDIGAN



SPECIFICATIONS

50% Polyester, 50% Cotton

Reactive Dyed

Set in Sleeve

Five Button Cardigan

Side Seam Pockets

Twin Needle Stitching at Neck,
Shoulders, Armholes and Sleeves

Lycra Ribbed Cuffs, Welt and Neck

Brushed Effect for Superior
Comfort and Look

Name Tag on Neck Label

Enzyme washed for extra soft hand-
feel and reduced shrinkage

SIZES

2 YRS - 11/13 YRS

COLOURS

Black

Bottle Green

Brown

Maroon

Navy

Purple

Red

Royal

Sky


Sky

Please scan QR code
for more details



UX7 THE UX CHILDRENS SWEATSHIRT



 **Pink**
Please scan QR code
for more details

SPECIFICATIONS

50% Polyester 50% Cotton
Reactive Dyed
Set in Sleeve
Lycra Ribbed Cuffs, Welt & Neck
Twin Needle Stitching at Neck, Shoulders,
Armholes & Sleeves
Brushed Effect for Superior Comfort & Look
Name Tag on Neck Label

SIZES

3/4 YRS - 11/13 YRS

COLOURS

- | | |
|---|---|
|  Black |  Bottle Green |
|  Charcoal |  Heather Grey |
|  Maroon |  Navy |
|  Pink |  Red |
|  Royal |  White |



UC503 CHILDRENS CLASSIC HOODED SWEATSHIRT



SPECIFICATIONS

50% Polyester, 50% Cotton
Reactive Dyed
Lycra Ribbed Cuffs, Welt and Neck
Twin Needle Stitching
Taped Neck
Set in Sleeve
Front Pouch Pocket
Double Fabric Hood
Brushed Effect for Superior
Comfort and Look

SIZES

2 YRS - 11/13 YRS

COLOURS

Black	Bottle Green	Sapphire
Kelly Green	Heather Grey	Military Green
Charcoal	Olive	Navy
Maroon	Orange	Pink
Red	Royal	Sky
Violet	Hot Pink	Jade
Yellow	Purple	White

Orange
Please scan QR code
for more details



UC506

CHILDRENS CLASSIC FULL ZIP HOODED SWEATSHIRT



300
GSM



SPECIFICATIONS

50% Polyester, 50% Cotton
Reactive Dyed
Lycra Ribbed Cuffs and Welt
Twin Needle Stitching
Full Self Coloured Zip
Taped Neck
Set in Sleeve
Front Pouch Pocket
Double Fabric Hood
Brushed Effect for Superior
Comfort and Look

SIZES

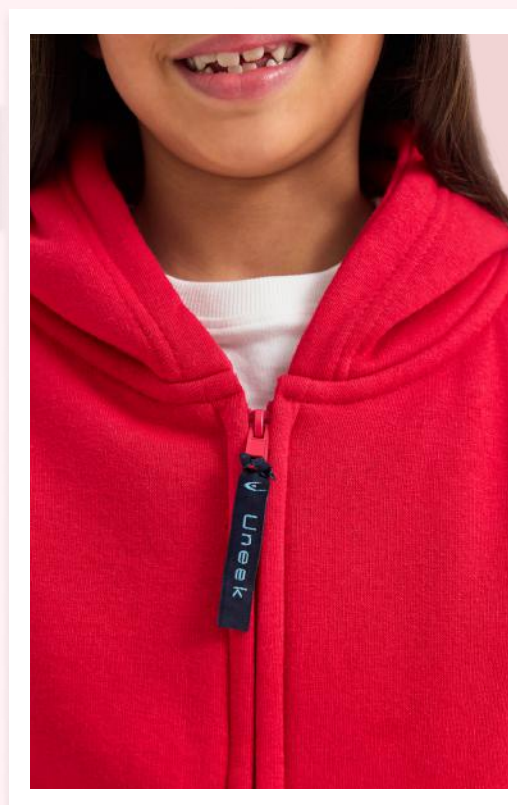
5/6 YRS - 11/13 YRS

COLOURS

- | | |
|--|--|
|  Black |  Bottle Green |
|  Navy |  Sky |
|  Red |  Royal |
|  Yellow |  Heather Grey |
|  White | |

 Red

Please scan QR code
for more details



UC521

CHILDRENS JOG BOTTOMS



300
GSM



SPECIFICATIONS

50% Polyester, 50% Cotton
Reactive Dyed
Elasticated Waist and Leg Opening
Two Side Pockets
Rear Patch Pocket

SIZES

5/6 YRS - 11/13 YRS

COLOURS



Black



Navy



Heather Grey



UC603

CHILDRENS CLASSIC FULL ZIP FLEECE JACKET



SPECIFICATIONS

100% Polyester Super Anti
Pill Micro Fleece
Twin Needle Stitching
Elasticated Cuffs
Full Self Coloured Zip
2 Self Coloured Covered
Zipped Pockets
Half Moon Yoke

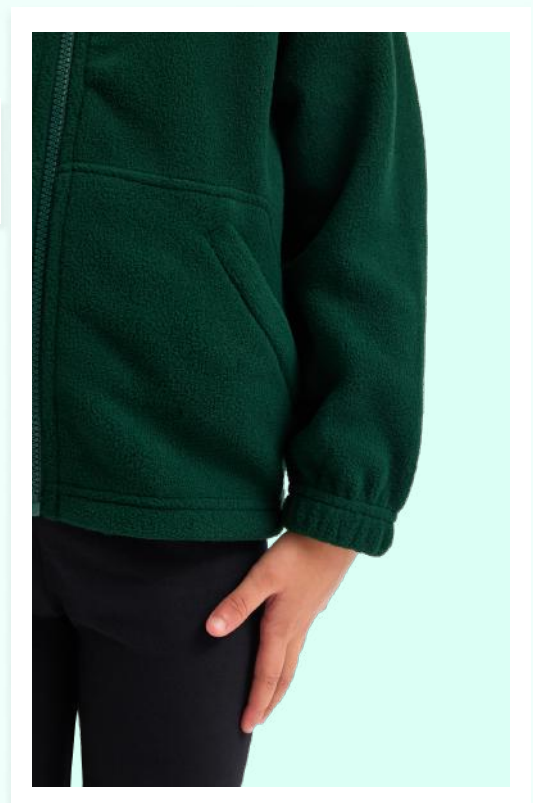
SIZES

2 YRS - 11/13 YRS

COLOURS

- | | |
|---|--|
|  Black |  Bottle Green |
|  Navy |  Red |
|  Royal |  Maroon |

 **Bottle Green**
Please scan QR code
for more details



UC806 CHILDRENS HI VIS WAIST COAT



SPECIFICATIONS

EN 17353:2020 & EN 13688:2013

Approved

UKCA Certified

CE Certified

100% Polyester

Dark Grey Polyester Bound Edges

2 Band and 2 Brace

2 Retro Reflective Strips
stitched-on around body
and 1 over each shoulder

Velcro Fastening

Washable 25X

SIZES

4/6 YRS - 10/13 YRS

COLOURS



Yellow



Orange

Yellow


Please scan QR code
for more details





UX8 THE UX CHILDRENS HOODED SWEATSHIRT



 **Maroon**
Please scan QR code
for more details

SPECIFICATIONS

50% Polyester 50% Cotton
Reactive Dyed
Set in Sleeve
Lycra Ribbed Cuffs, Welt & Neck
Twin Needle Stitching at Neck,
Shoulders, Armholes & Sleeves
Brushed Effect for Superior
Comfort & Look
Double Fabric Hood
Front Pouch Pocket
Taped Neck

SIZES

3/4 YRS - 11/13 YRS

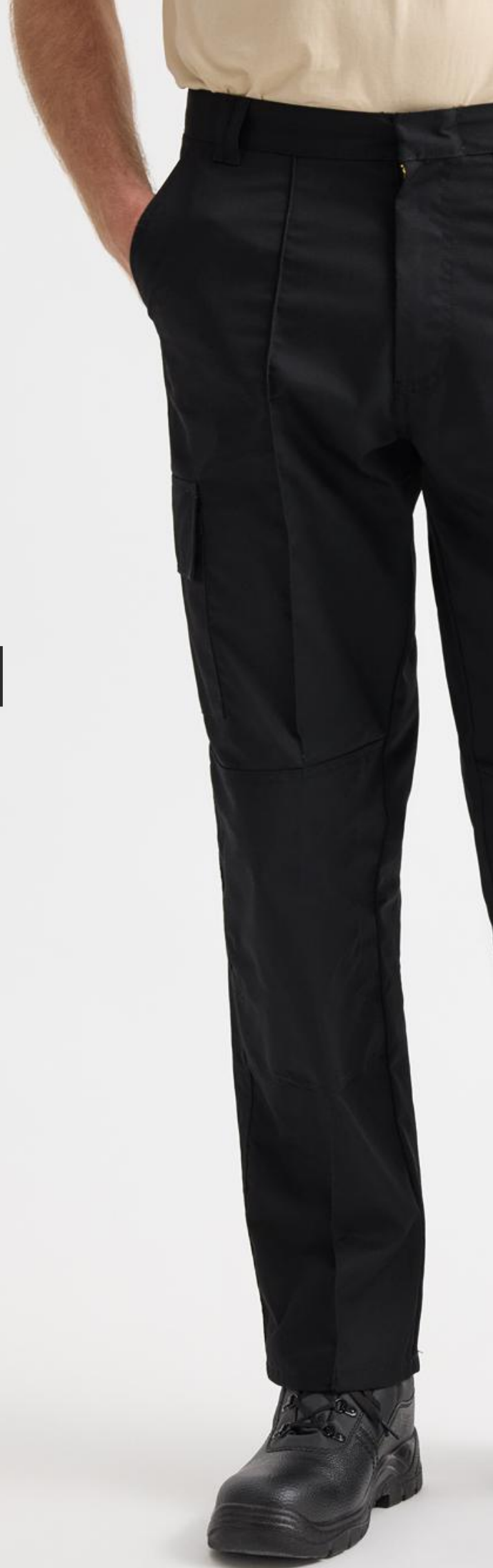
COLOURS

- | | |
|---|--|
|  Black |  Bottle Green |
|  Charcoal |  Heather Grey |
|  Navy |  Maroon |
|  Pink |  Red |
|  Royal |  White |



TROUSERS COLLECTION

UC901	152
UC907	153
UC902	154
UC904	156
UC903	157
UC905	157
UC906	158





UC901 WORKWEAR TROUSER



245
GSM



SPECIFICATIONS

Washable at 60 Degrees
65% Polyester 35% Cotton
Two Front Pockets
Flat front with sewn-in front crease
Rear buttoned back pocket
Twin belt loops reinforced for extra strength
Wide belt loops
Fabric: 245 GSM/7 oz
Metal rivet button fastening at waist

SIZES

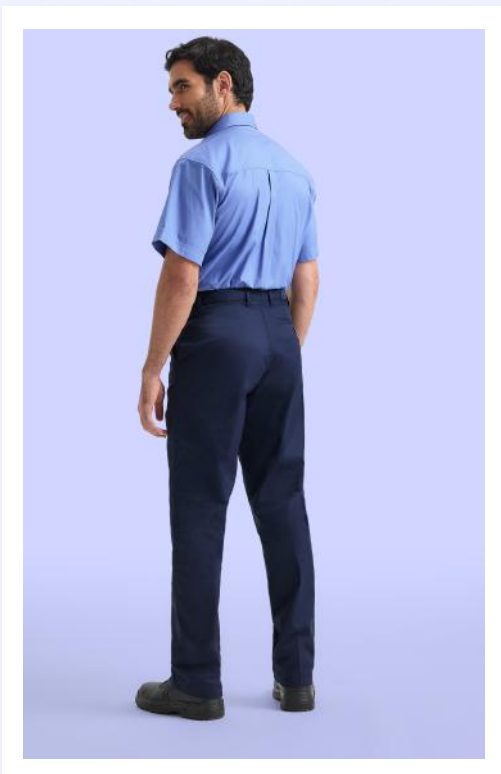
28-52*

*Available in Reg and Long lengths
Inside Leg for Regular: 31"
Inside Leg for Long: 33"

COLOURS

Black

Navy



UC907 MENS CARGO SHORTS



SPECIFICATIONS

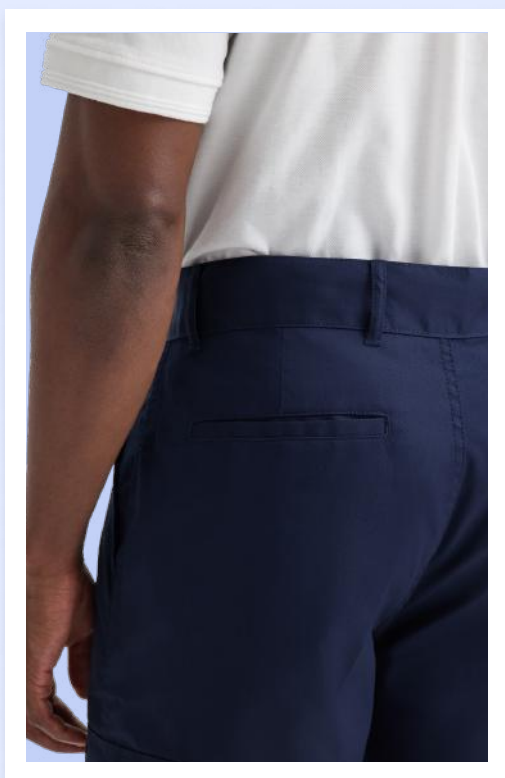
65% Polyester, 35% Cotton
Modern Fit
Flat front with concealed metal zip on fly
Concealed Metal Rivet Button Fastening at Waist
Two side hip pockets
Two cargo pockets (with Velcro closure) on side leg
Two jetted pockets on back hip
Twin belt loops, re enforced for additional strength

SIZES

28-46

COLOURS

■ Black ■ Navy



UC902 CARGO TROUSER



245
GSM



SPECIFICATIONS

65% Polyester, 35% Cotton
Fabric: 245 GSM/7 oz
Flat front with sewn-in front crease
2 side and 2 rear pockets with velcro flaps
2 thigh pockets with velcro flaps
Concealed Metal Rivet Button
Fastening at Waist
Twin belt loops reinforced for extra strength
Wide belt loops
Washable at 60 degrees

SIZES

28-52*

*Available in Short, Reg and Long lengths
Inside Leg for Short: 29"
Inside Leg for Regular: 31"
Inside Leg for Long: 33"

COLOURS

 Black

 Navy



Black

Please scan QR code
for more details





UC904

CARGO TROUSER WITH KNEE PAD POCKETS



245
GSM



SPECIFICATIONS

65% Polyester, 35% Cotton

Fabric: 245 GSM/7 oz

Flat front with sewn-in front crease

2 side and 2 rear pockets with velcro flaps

2 thigh pockets with velcro flaps

Concealed Metal Rivet Button

Fastening at Waist

Twin belt loops reinforced for extra strength

With Knee pad pockets with bottom opening

Wide belt loops

Washable at 60 degrees

SIZES

28-52*

*Available in Reg and Long lengths Inside

Leg for Regular: 31"

Inside Leg for Long: 33"

COLOURS

Black

Navy



UC903 ACTION TROUSER



SPECIFICATIONS

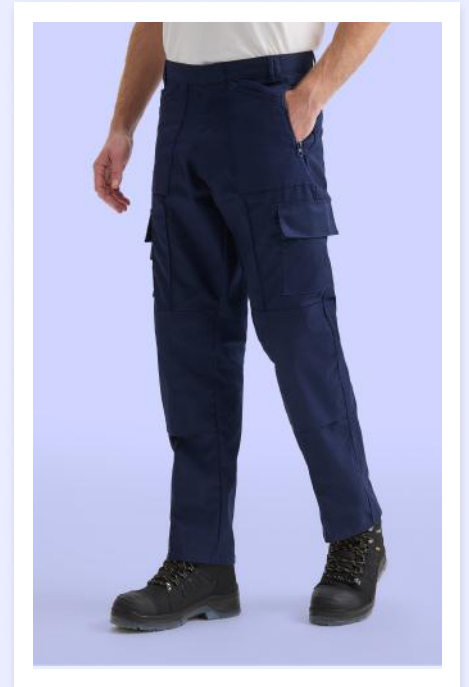
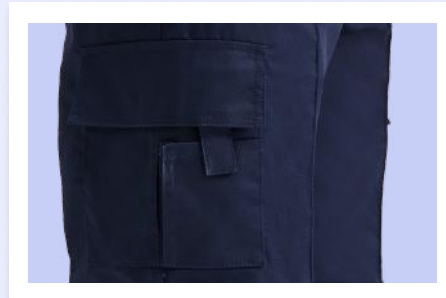
65% Polyester 35% Cotton
Washable at 60 Degrees
Flat front with sewn-in front crease
Twin belt loops reinforced for extra strength
Wide belt loops
Four Slanted front pockets
Two Side Zipped Pockets
Two thigh pockets with velcro opening
Two rear pockets, one opened, one zipped
Knee pad pockets with bottom opening
Velcro Sealed mobile phone pocket
Fabric: 245 GSM/7 oz
Metal rivet button fastening at waist

SIZES

28-52*
*Available in Reg and Long lengths Inside
Leg for Regular: 31"
Inside Leg for Long: 33"

COLOURS

 Black  Navy



UC905 LADIES CARGO TROUSER

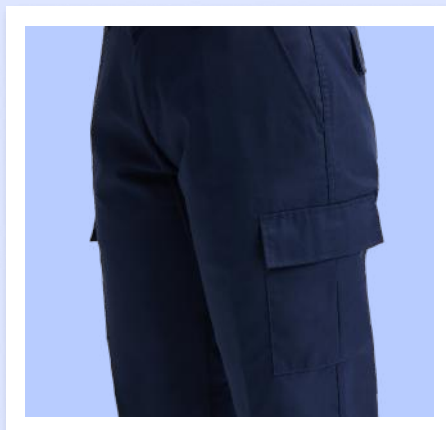


SPECIFICATIONS

65% Polyester, 35% Cotton
Fabric: 245 GSM/7 oz
Single belt loops reinforced for extra strength
Concealed Metal Rivet Button Fastening at Waist
2 side and 2 rear pockets with velcro flaps
2 thigh pockets with velcro flaps
Flat front
Wide belt loops

COLOURS

 Black  Navy



SIZES

8-20*
*Available in Reg
Inside Leg for Regular: 30"

UC906 SUPER PRO TROUSER



SPECIFICATIONS

65% Polyester, 35% Cotton
Fabric: 330 GSM/9.7 oz
2 front pockets with tuck away nail pockets
2 side pockets, one with velcro, one with velcro and zipper
2 Back pockets with velcro and double fabric at pocket base
Wide Cell Phone pocket on right side pocket
Three slot tool holder on left side pocket
Reflective tabs on pockets
Triple Stitched Seams
8 X Belt Loops
High Quality YKK Brass Zipper
Hammer Loop
Knee Pad Pockets with bottom opening
Concealed Metal Rivet Button
Fastening at Waist
Extra Button

SIZES

28-52*

*Available in Short, Reg and Long lengths. (Short not available in Grey & Bottle Green)

COLOURS

■ Black ■ Navy
■ Bottle Green ■ Grey

Bottle Green
Please scan QR code for more details





UC924
MAROON

HEALTHCARE COLLECTION

UC921	162
UC922	163
UC923	164
UC924	165



UC923
HOSPITAL
BLUE

UC921
+UC922
AQUA

UC921
+UC922
HOSPITAL
BLUE



UC921 SCRUB TUNIC



150
GSM



SPECIFICATIONS

65% Polyester, 35% Cotton
V Neck Line
Patch Pocket on Left Chest (as worn)
Two Patch Pockets on Lower Front
Regular Fit
Suitable to wear as a uniform with UC922
Scrub Trousers

SIZES

XS-4XL

COLOURS

- | | |
|---------------|--------------|
| Aqua | Bottle Green |
| Convoy Grey | Emerald |
| Hospital Blue | Maroon |
| Navy | Purple |
| Royal | Sky |
| Black | White |

Aqua

Please scan QR code
for more details



UC922 SCRUB TROUSER



150
GSM



SPECIFICATIONS

65% Polyester, 35% Cotton
Fully Elasticated Waist with Adjustable
Drawcord
Stitched Button Hole for Drawcord
Insertion
Patch Pocket on Back Hip
Regular Fit
Regular Leg Length
Suitable to wear as a uniform with
UC921 Scrub Tunic

SIZES

XS-4XL

COLOURS

 Aqua	 Bottle Green
 Convoy Grey	 Emerald
 Hospital Blue	 Maroon
 Navy	 Purple
 Royal	 Sky
 Black	 White



UC923 LADIES HEAVYWEIGHT TUNIC



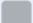



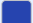

SPECIFICATIONS

65% polyester 35% cotton
Concealed Open End Zip in Centre Front
with Press Stud Fastening at Top
Two Chest Pockets
Two Hip Pockets
Action Back Pleats
Side Vents
Contrast Trim to Collar, Cuffs, and
Pockets
Regular Fit

SIZES

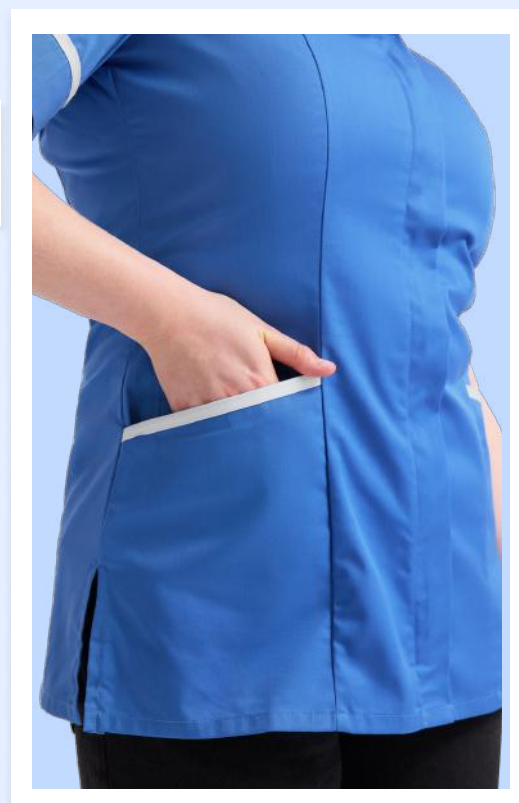
XS-6XL

COLOURS

 Aqua	 Bottle Green
 Convoy Grey	 Emerald
 Hospital Blue	 Maroon
 Navy	 Purple
 Royal	 Sky
 White	



 **Hospital Blue**
Please scan QR code
for more details



UC924 MENS HEAVYWEIGHT TUNIC



SPECIFICATIONS

65% polyester 35% cotton
Concealed Open End Zip in Centre
Front with Press Stud Fastening at Top
One Chest Pocket
Two Hip Pockets
Action Back Pleats
Side Vents
Contrast Trim to Collar, Cuffs,
and Pockets
Regular Fit

SIZES

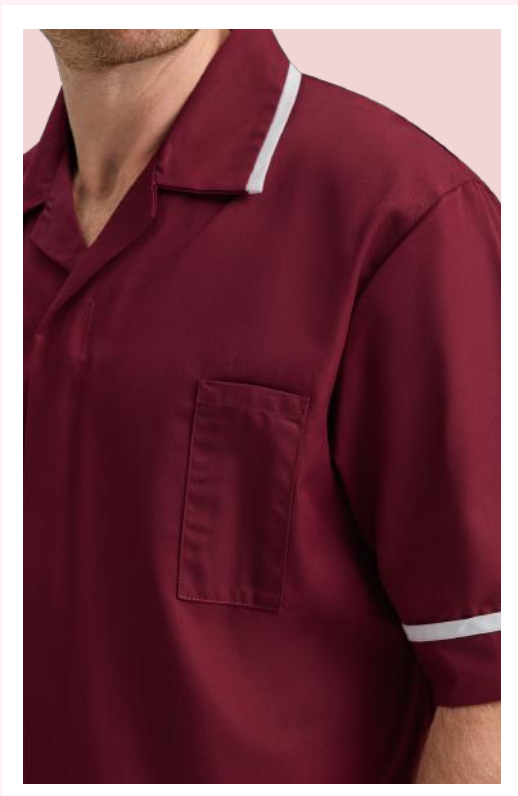
XS-5XL

COLOURS

- | | |
|---------------|--------------|
| Aqua | Bottle Green |
| Convoy Grey | Emerald |
| Hospital Blue | Maroon |
| Navy | Purple |
| Royal | Sky |
| White | |

Maroon

Please scan QR code
for more details





HOSPITALITY COLLECTION

UC920 167

UC940 169

UC920 HEAVYWEIGHT TABARD







SPECIFICATIONS

65% Polyester, 35% Cotton
Self-coloured binding
Adjustable side straps
Front pocket with 2 compartments

SIZES

S-2XL

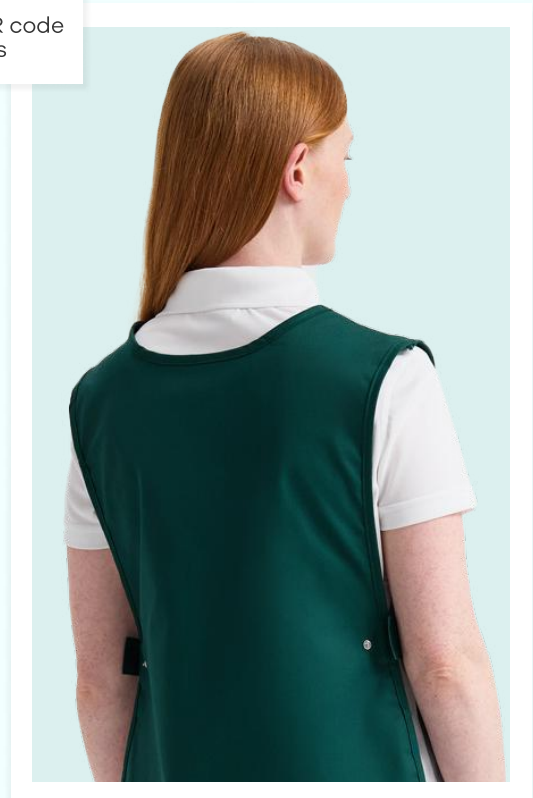
COLOURS

-  Black
-  Navy
-  Royal
-  Bottle Green



Bottle Green

Please scan QR code for more details



UC940
NATURAL

UC940
DARK C

BIB APRON WITH POCKET

UC940 BIB APRON WITH POCKET



Natural
Please scan QR code
for more details

SPECIFICATIONS

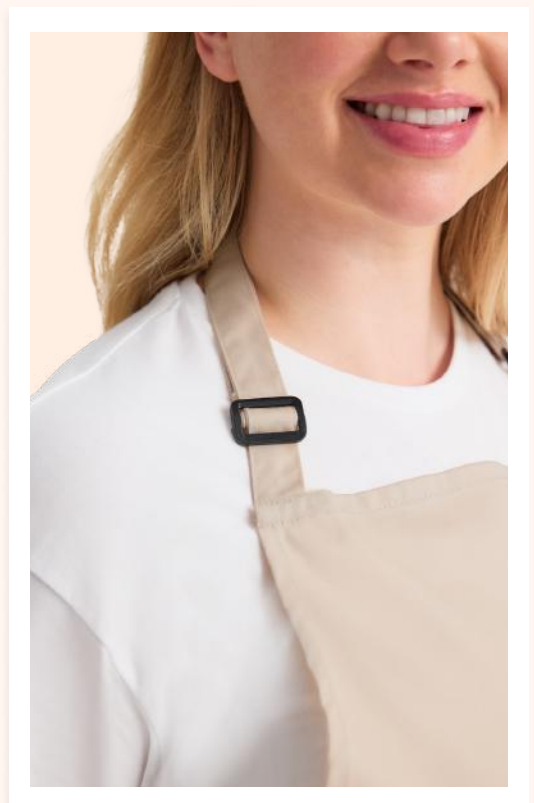
65% Polyester,
35% Cotton Twill
Adjustable Buckle at the Neck
Band For Overall Garment
Length Adjustment
Self Fabric Neck Band and
Waist Bands
Large Pocket in the front for
Storage/Tablet/Ordering
Device
Pen Slot in Front next to front
Pocket

SIZES

ONE SIZE

COLOURS

- Black
- Navy
- Bottle Green
- Dark Grey
- Natural



HEADWEAR COLLECTION

UC410	172	New
UC411	173	New
UC412	174	New
UC413	175	New



NEW



UC410 New

HEAVYWEIGHT CUFFED BEANIE



SPECIFICATIONS

100% Super Soft Acrylic*

Double Layer Knitted Fabric

Turn Up Design for Ease of Decoration and Comfort

*Composition for Charcoal is 52% Acrylic 48% Polyester

SIZES

ONE SIZE

COLOURS

Black

Bottle Green

Charcoal

Deep Royal

Navy

Red

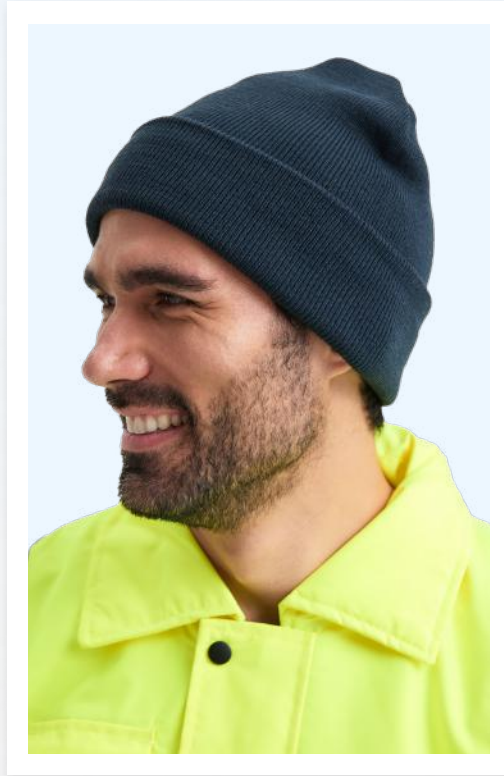
Graphite Grey

Maroon

Fuchsia

Emerald

NEW



UC411 New

RECTANGULAR PATCH BEANIE








SPECIFICATIONS

100% Super Soft Acrylic
Cotton twill rectangular patch for printing
Double Layer Knitted Fabric
Turn Up Design for Ease of Decoration and Comfort

SIZES

ONE SIZE

COLOURS

-  Red
-  Graphite Grey
-  Navy
-  Maroon
-  Black



UC412 New

CIRCULAR PATCH BEANIE



SPECIFICATIONS

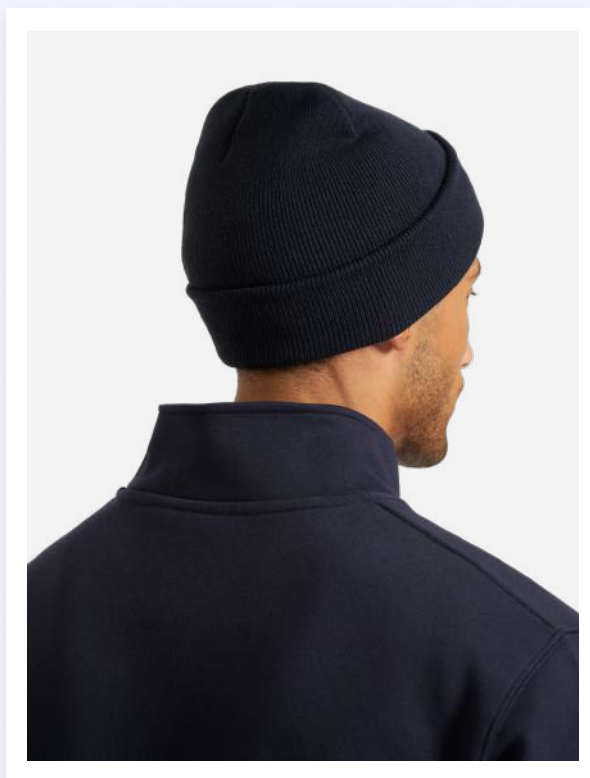
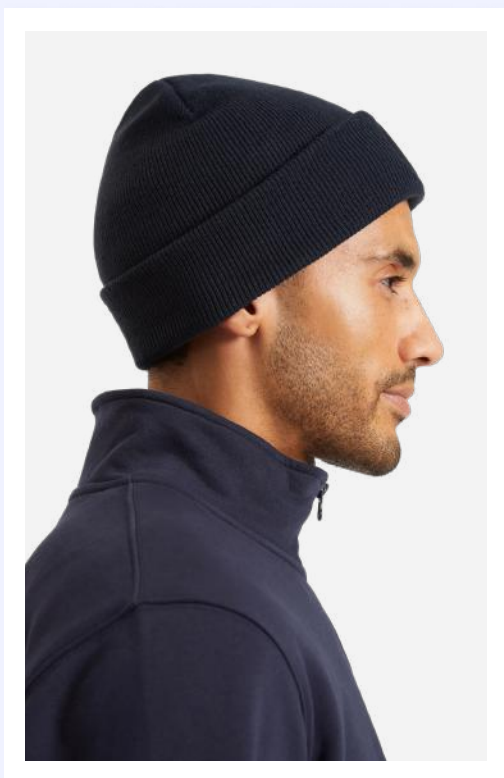
100% Super Soft Acrylic
Cotton twill circular patch for printing
Double Layer Knitted Fabric
Turn Up Design for Ease of Decoration
and Comfort

SIZES

ONE SIZE

COLOURS

-  Red
-  Graphite Grey
-  Navy
-  Maroon
-  Black



UC413 New POM POM BEANIE



SPECIFICATIONS

100% Super Soft Acrylic*
Double Layer Knitted Fabric
Turn Up Design for Ease of Decoration
and Comfort
Dual style - cuffed or slouch.
Composition for Heather Grey is 52%
Acrylic 48% Polyester

SIZES

ONE SIZE

COLOURS

- Black
- Bottle Green/Off White
- Heather Grey/Black
- Black/Graphite Grey
- Navy
- Navy/Light Grey
- Black/Red



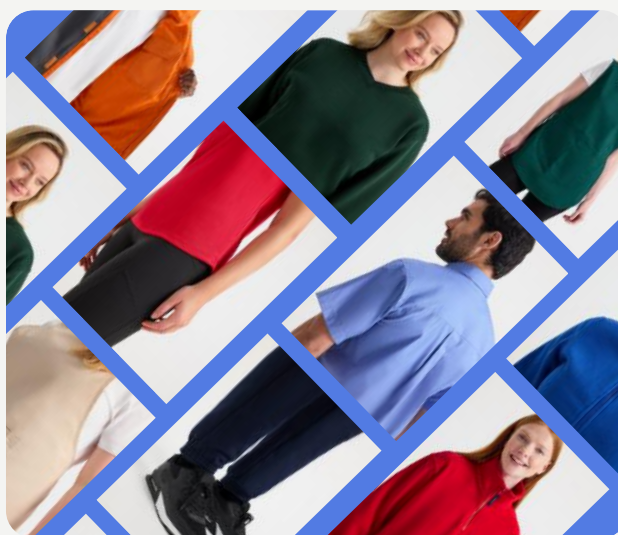
YOUR VISION, OUR EXPERTISE

BESPOKE BY UNEEK

YOUR VISION, OUR EXPERTISE BESPOKE BY UNEEK

Bring your unique vision to life with Uneek Clothing's bespoke service. Whether you need a distinctive uniform that reflects your brand's identity or custom promotional wear that makes an impact, we tailor each garment to your exact specifications. From custom decoration, packaging, and labelling to personalised finishing touches, we ensure every detail aligns with your brand. Our expertise ensures your ideas are realised with precision, quality, and attention to detail.

Our streamlined process makes it simple and hassle-free—from design to delivery, we handle everything with precision, quality, and attention to detail. Whether you're starting from scratch or adapting an existing design, we make it easy to create garments that truly stand out.



THE BESPOKE PROCESS

01

CONSULTATION, DESIGN & QUOTATION

It all starts with your idea. Our design team works closely with you to create a new design or adapt an existing one, ensuring the final product aligns perfectly with your vision. After finalising the design, we provide a detailed price quote within a few days, ensuring complete transparency before moving forward.

03

PRODUCTION

Once approved, our skilled artisans craft your bespoke garments in our state-of-the-art facilities over 8-10 weeks, using high-quality materials and expert techniques.

05

SHIPMENT

Your completed order is carefully packaged and dispatched from our distribution centres, arriving safely and on time within 2-5 weeks, depending on your location.

02

SAMPLING

A prototype is created within 2-4 weeks, allowing you to see and feel your design before full production begins. This ensures every detail is refined to perfection.

04

QUALITY ASSURANCE

Every garment undergoes rigorous quality checks to ensure durability, comfort, and a flawless finish.

Your Brand, Your Way. With Uneek Clothing, you're not just ordering custom apparel—you're creating a powerful representation of your brand. Every bespoke garment is a testament to our craftsmanship and your vision, designed to meet the highest standards of quality and style. Let's bring your ideas to life—your brand, your way.

SIZING GUIDE

MEN'S SIZE CHART - BODY MEASUREMENT

SIZE	XS	S	M	L	XL	2XL	3XL	4XL	5XL	6XL	7XL	8XL
Chest To Fit (Inches)	36-38	38-40	40-42	42-44	44-46	46-48	50-52	52-54	54-56	58-60	60-62	62-64
Chest To Fit (Cm)	91-96	96-102	102-107	107-112	112-117	117-122	127-132	132-137	137-142	147-152	152-157	157-162

Shirt Collar To Fit (Inches)		14.5-15	15.5	16-16.5	17-17.5	18-18.5	19-19.5
Shirt Collar To Fit (Cm)		37-38	39.5	41-42	43-44.5	45.5-47	48-49.5

International conversion												
DE (Benelux/ Germany/ Scandinavia)	44	46	48	50	52	54	56	58	60	62	64	66-68
FR (France, Spain Italy, Portugal)	36-38	38-40	40-42	44-46	46-48	48-50	50-52	50-52	52-54	54-56	56-58	58-60

Trousers	28	30	32	34	36	38	40	42	44	46	48	50	52
Waist To Fit (Inches)	28	30	32	34	36	38	40	42	44	46	48	50	52
Waist To Fit (Cm)	71	76	81	86	91	96	101	106	112	117	122	127	132

International conversion													
DE (Benelux/ Germany/ Scandinavia)	44	46	48	50	52	54	56	58	60	62	64	66	68
FR (France/ Spain / Italy / Portugal)	38	40	42	44	46	48	50	52	54	56	58	60	62

Inside Leg Measurement													
Short	29	29	29	29	29	29	29	29	9	29	29	29	29
Regular	31	32	31	31	31	31	31	31	31	31	31	31	31
Long	33	33	33	33	33	33	33	33	33	33	33	33	33

LADIES SIZE CHART - BODY MEASUREMENT

SIZE	XS	S	M	L	XL	2XL	3XL	4XL	5XL	6XL
UK Size	8	10	12	14	16	18	20	22	24	26
Bust To Fit (Inches)	30-32	32-34	34-36	36-38	38-40	40-42	42-44	44-46	46-48	48-50
Bust To Fit (Cm)	76-81	81-86	86-91	91-96	96-101	101-106	106-111	111-116	116-121	121-127

International conversion										
Austria, Switzerland, Sweden, German, Netherlands,	34	36	38	40	42	44	46	48	50	
Belgium, Spain, France, Portugal	34	36	38	40	42	44	46	48	50	
Italy	40	42	44	46	48	50	52	54	60	

Trousers	8	10	12	14	16	18	20
Waist To Fit (Inches)	26	28	29	31	33	35	37
Waist To Fit (Cm)	66	71	74	79	84	89	94

International conversion							
DE (Benelux/ Germany/ Scandinavia)	34	36	38	40	42	44	46
FR (France / Portugal / Spain)	36	38	40	42	44	46	48-50

Inside Leg Measurement							
Regular	30	30	30	30	30	30	30

CHILDREN'S SIZES CHART - BODY MEASUREMENT

Years	2	3-4	5-6	7-8	9-10	11-13
Chest To Fit (Inches)	22-24	24-26	26-28	28-30	30-32	32-34
Chest To Fit (Cm)	56-61	61-66	66-71	71-76	76-81	81-86
Height	92-98	98-104	110-116	122-128	135-140	146-158

International conversion						
European	98	104	116	128	140	152

Children's Hi Vis Coat		4-6	7-9	10-13
Chest To Fit (Inches)		24-26	28-30	32-34
Chest To Fit (Cm)		61-66	71-76	81-86

MEASUREMENT GUIDE

UNISEX SIZE CHARTS

"If ordering unisex tops for Ladies (Poloshirts, Sweatshirts, Fleece Jackets, T-Shirts and Hi Vis Jackets"

SIZE	XS	S	M	L	XL	2XL	3XL	4XL
UK Dress Size	8-12	14	16	18	20	22	24	26
To Fit Bust (Inches)	30-34	36	38	40	42	44	46	48
To Fit Bust (Cm)	76-86	92	97	102	107	112	117	122

If ordering unisex tops for Ladies

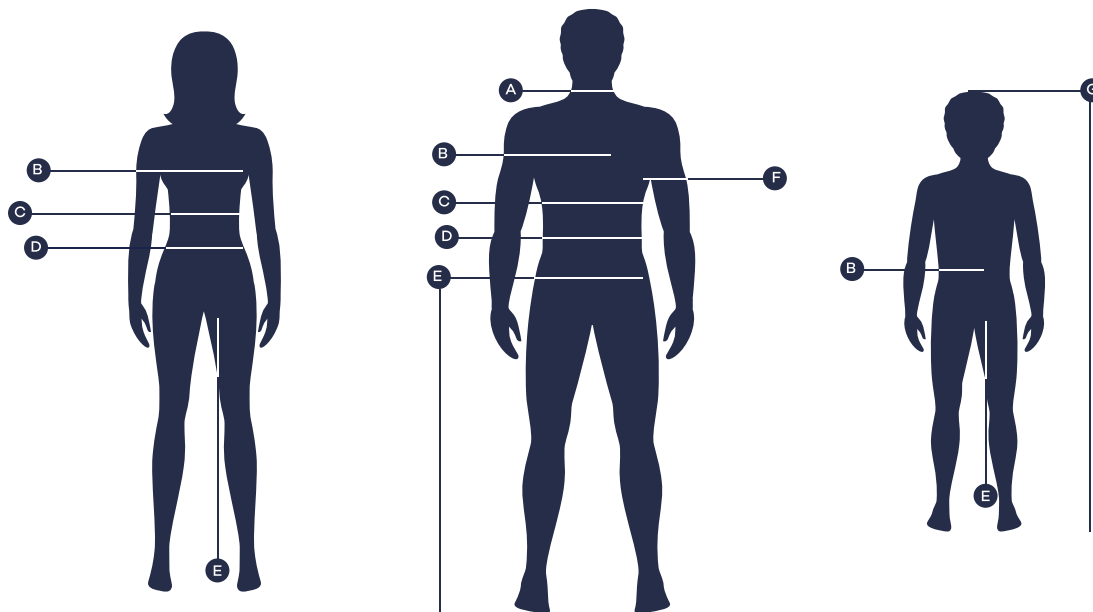
SIZE	XS	S	M	L	XL	2XL	3XL	4XL
UK Dress Size	10-12	14	16	18	20	22	24	26
Waist Size (Inches)	28	30	32	34	36	38	40	42
Waist Size (Cm)	71	76	81	86	92	97	102	107
Regular Inside Leg (Inches)	31	31	31	31	31	31	31	31
Long Inside Leg (Inches)	33	33	33	33	33	33	33	33

A SIZE GUIDE ON HOW TO MEASURE YOUR BODY

Please find below the guide-lines on accurate body measurements to determine the correct clothing sizes.

All our garments are produced with sufficient allowance for comfortable movement.

For actual garment measurements, do refer to our specification sheet which you will find on the website.



HOW TO MEASURE

A Collar: measure around the base of the neck.

B Male Chest: place a measuring tape 2.5cm below underarm around the widest part of your chest.

Female Bust: place a measuring tape around your widest part of your chest.

Child Chest: place a measuring tape 2.5cm below the underarm around child's chest.

C Waist Line: place a measuring tape at the natural waist of your body.

D Hip Line: place a measuring tape at the widest part of your hips, it is approximately 20 - 22cm below your natural waist.

E Leg Length: place a measuring tape along your inner thigh and measure from crotch to the bottom of your heel.

F Sleeve Length: place a measuring tape along superior side of your arm. Measure from your shoulder bone down to top of your wrist.

G Child Height: standing straight with bare feet measure from the top of the head down to floor.

WASHCARE & FAQ

CARING FOR YOUR UNEEK GARMENT

WASHING

Before washing, always look at the care label and carefully follow the instructions. Most good quality detergents, washing machines and fabrics are manufactured to ensure that when the stated instructions are adhered to and the garment is washed according to the said temperature and dried as per the procedures mentioned; they will wash well and look good after each wash. The following points should be used as guidelines for all garments:

- Before washing, close all zips, undo buttons, check pockets for loose or sharp objects, flatten out collars and cuffs
- Always refer to the Label before Washing
- Always check to ensure the Washing Machine is not overloaded
- Use a good quality detergent and ensure that the right amount of detergent is used

PRINTING

Owing to the numerous processes and techniques used for printing on garments, we strongly recommend that a single garment is printed on, then washed and tested to ensure it meets your requirements before bulk printing. Care should be taken to ensure the right kind of pigments/



60 Degree Wash:
Spin Cotton Cycle



60 Degree Wash:
Spin Synthetic Cycle



40 Degree Wash:
Spin Cotton Cycle



40 Degree Wash:
Spin Synthetic Cycle



Low heat



Medium heat



High heat



Warning:
Do not Tumble Dry



Dry Clean:
Normal Cycle
Any solvent except Trichloroethylene



Warning:
Do not Dry Clean



Warning:
Do not Bleach

printing dyes are used while printing and the optimum temperature/heat levels are not exceeded. Violation of standards and procedures will result in the garment losing its feel/lustre as well as weakening of the fabric and overall garment performance.

FAQ

GARMENT SHRINKAGE

Excessive Shrinkage is primarily due to factors such as heat and major agitation during the wash cycle. Always wash as per instructions stated on the care label.

FADING DUE TO SUNLIGHT

The effects of fading due to Sunlight are both harmful & irreversible. Constant and prolonged exposure to sunlight should be reduced as far as possible.

PILLING & BOBBLING

Abrasion and lack of care /timely washing of the garment leads to fibre balls appearing on the surface of the fabric. Remove by mild surface brushing.

TRIMS/ ACCESSORIES BREAKING OFF

Trims & accessories like zippers, toggles, pocket lining and elastic cords are constructed for normal usage. Extensive abuse of the garment involving sharp objects, work areds with machinery and even the odd outburst of brute force results in the garment being damaged. Precaution & Care should be taken at all times.

COLOUR STAINING

Wash similar coloured garments together. Do not leave damp garments together for any length of time.

uneek

www.uneekclothing.com

