



**FrontDesk**  
A LOC International Company SUPPLY

# PRODUCT CATALOG



## We excel at hospitality, like you do!

### About LOC International

Founded in 1988, with a focus on service and quality, LOC International has become a leader in the design, manufacturing and distribution of products for the hospitality industry.

LOC International supplies electronic hotel safes, minibars, refrigerators, keycards, smart RFID door locks, hospitality TV solutions, alarm clocks, in-room phones and access devices to more than 10,000 satisfied customers throughout North America and the Caribbean. We are committed to supporting you in delivering an outstanding guest experience, day after day!

*Richard Tanguay*

Richard Tanguay  
Founder

THE  
GLOBE  
AND  
MAIL



2021-2022-2023-2024-2025

LOC International  
recognized as one of  
Canada's Top Growing  
Companies

FrontDesk  
SUPPLY

Hotpoint.



GE APPLIANCES



AIR & WATER  
SOLUTIONS

SAMSUNG

PHILIPS

Unity

OMNITEC



VERDANT

vtech®

Danby

Energex

NONSTOP™



Homtime

MODA



teknotip

Techni  
Contact

peerless-AV®

LOC Safe™

LOC  
KeyCards

LOCfrost™  
for an undisturbed sleep

---

# Catalog content

HOSPITALITY TVs & SMART DISPLAYS	
PHILIPS	4
SAMSUNG	6
LG	8
SECURITY & ACCESS	
ELECTRONIC LOCKS	10
LOCSafes ELECTRONIC SAFES	16
IN-ROOM APPLIANCES	
LOCFrost MINI BARS & FRIDGES	18
EXTENDED STAY APPLIANCES	20
PTACs	24
THERMOSTATS	28
IN-ROOM ELECTRONICS	
RADIO ALARM CLOCKS	34
IN-ROOM PHONES	38
SOUND SYSTEMS	42
ACCESSORIES	44
PEERLESS	46
FRONT DESK SUPPLY	48
TEKNOTIP CASHLESS TIPPING SOLUTION	54
SERVICES	56
CONTACT INFORMATION	58





# Optimize the guest experience with Philips MediaSuite

## Get guests connected



Model 65HFL6114U/27

### Helping to create memorable guest experiences

From premium TVs in the room to touchscreens at check-in, Philips' professional TVs and signage solutions help run things smoothly. Unique features like Ambilight and CMND offer more interactivity, more control, and more style.

Connectivity is everything - **Philips MediaSuite** brings a world of options to the screen with Chromecast built-in, Google Play Store and Google Voice Assistant.

### Customizable branding

Philips MediaSuite features a clear, easy-to-navigate user interface (UI) that can be customized with any branding.

### CMND & Check-in

Visitors feel welcome. CMND & Check-in lets a hotel use individual information such as name and language spoken to create a personalized experience.

### Netflix

Integrated Netflix access makes watching the latest movies and shows from an account easier, faster and more convenient. There's no need for any external players or satellite TV, which helps keep operational costs down and installations neat, while maintaining a modern look for an establishment.

### Google Assistant

Voice control and faster answers are here with the optional Google Assistant enabled remote control (22AV2025B/00).

### Powered by Android

Android-powered Philips professional displays are fast, versatile and easy to navigate.

All displays are optimized for native Android apps and a facility can install web apps directly to the display too.

### Chromecast built-in

Enable instant, secure wireless casting of movies, presentations, and more from smart devices (mobiles, laptops, tablets) in up to 4K resolution.

# NETFLIX



*Terms and conditions apply for Netflix activation.*

 **Technical support, full integration  
and after-sales service** *p.57*



# Hospitality displays, LED Wall and digital signage solutions

## Entertainment designed to enhance the guest experience



Model HG75TQ800NF

**Samsung offers a comprehensive range of hospitality displays and wall and digital signage solutions, built to transform the guest experience.**

Samsung's display solutions are designed to enhance guest comfort and optimize staff efficiency.

From arrival to departure, and everywhere in between, Samsung's innovative display technologies provide guests with a modern, integrated, and engaging experience.

Invite guests in with captivating displays and memorable experiences, managed by simple operating systems for staff.

### Luxury

Indulge guests with vibrant and high-resolution displays powered by Samsung's innovative technology.

### Lifestyle

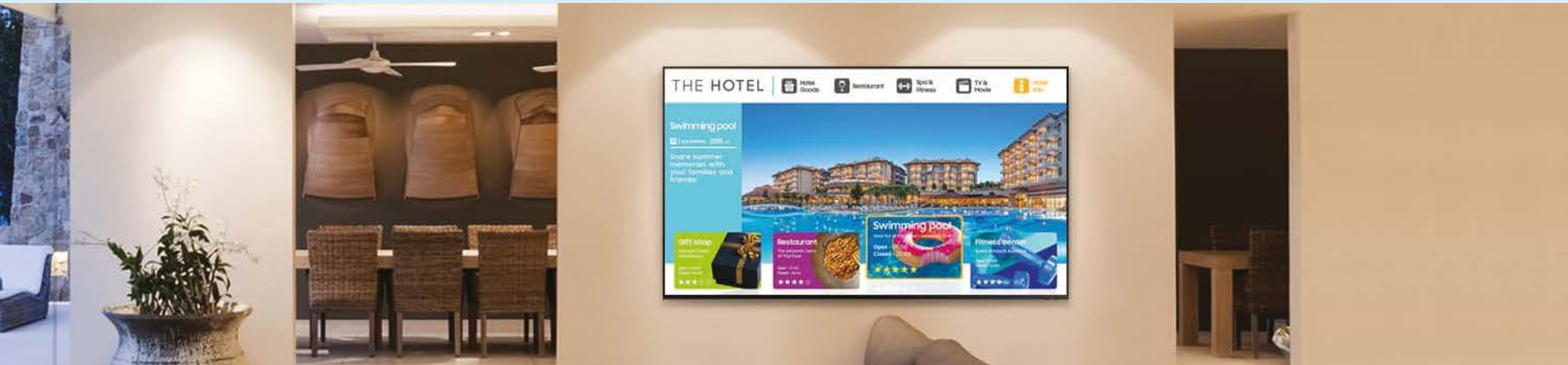
Modern designs that don't compromise quality. Enhance the guests' stay with Samsung's beautiful and iconic displays.

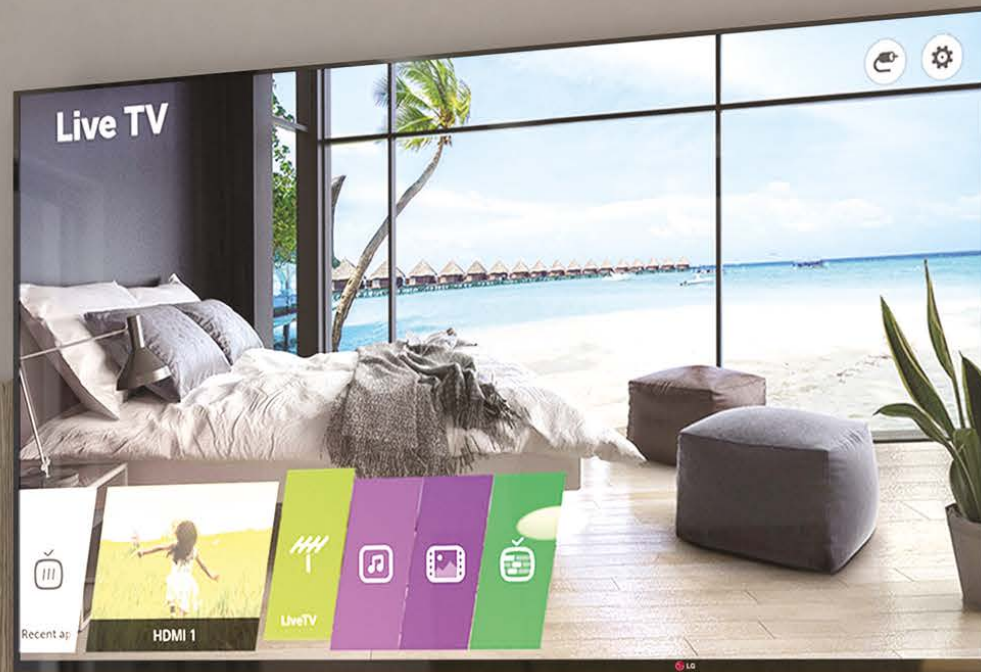
### Premium

Bring the comfort of home whilst on the road, with high-quality imagery and intriguing entertainment.

### Standard

Welcome guests with a simple and convenient display experience operating from a centralized operating system.





# Hospitality TV solutions

## Entertainment designed to enhance the guest experience



### Commercial Lite TVs & Public Display

Cost-effective and reliable 4K UHD and Full HD TVs with welcome screen, easy set-up & USB cloning.

### Hospitality Full Features

Entertain your guests by unlocking access to premium content, Pro:Centric compatible and enjoy rapid deployment through the USB cloning feature.

Installation & programming available by an authorized LG integrator.

### IP & Smart TVs

Offer your guests a better hotel experience through a TV with IP-based programs & provide premium hotel services without the need for set-top boxes.

Create custom dashboards and offer informative resources to make your guests' stay more welcoming.

**2-3 years on-site  
commercial warranty  
on both parts  
and labor.**





# Advanced RFID & electronic locking solutions

## Intelligent and stylish card lock systems



ALV Mortise  
Series Slim



ALV Mortise  
Series Wide

MIWA is a true lock maker who manufactures and controls the quality of every aspect of every lock, from start to finish. Made in Japan since 1945, MIWA lock systems are designed specifically for today's busy hospitality industry.

Using the latest RFID & Bluetooth (BLE) technology, the locking systems are attractive yet durable and easy for guests and staff to use.

**MIWA lock systems are approved by most major hotel chains like BWH, Marriott, Hyatt, Wyndham & more.**

As the top choice for independent properties worldwide, MIWA is your gateway to peace of mind!

### Key Features

- Bluetooth Low Energy (BLE) Enabled to work with mobile key (optional)
- Guest cards can be programmed to open individual lock or multiple rooms, plus all common doors, special and VIP areas
- Property Management System (PMS) & Point of Sale (POS) interface ready
- System allows guests and staff to use cards, key fobs or wristbands
- Staff keys can be audited, timed and set to operate on chosen days of the week
- Master and emergency cards override all locks whether the deadbolt is in use
- 3 years limited warranty



M Series

## Handle & Color Options

Available in several finishes and handle types. The pressed stainless steel escutcheon is available as standard in 6 high-quality finishes:

Polished Stainless Steel, Satin Stainless Steel, Mid-Bronze, Satin Brass, Polished Brass and Matte Black.





# Dedicated hotel access solutions

Hotel access control meeting industry standards, and delivering guest satisfaction



## **DIRECTKEY™ TECHNOLOGY ~** Mobile access solution

The Onyia DirectKey system is a mobile access solution that keeps guests moving, while helping drive engagement, efficiency and growth. Designed to work alongside Onyia Trillium locks, most legacy Onyia locking systems and the OnPortal locking system, DirectKey technology helps facilities better support and satisfy the way their guests want to interact with the property.



## **ONPORTAL™ SYSTEM ~** Enterprise Lock Management

The OnPortal system is Onyia's latest lock management software: a scalable solution with roving check in option and full access management. Built on research and feedback from front-desk agents on their routines and challenges, the OnPortal system is designed to deliver optimal efficiency, flexibility and guest satisfaction.

## **SERENE ~ Serene™ luxury locks**

- Serene locks use Bluetooth® technology to stay in a ready state so guests can use a hotel provided mobile app to unlock as they approach the door.
- Onyia's DirectKey system protects mobile key credentials using 128-bit AES encryption which provides an additional layer of security on top of locking system features built into Serene locks such as user access permissions and audit trails. Serene lock firmware can be upgraded through a firmware utility to optimize lock performance and add new features.



## **TRILLIUM ~ Trillium® RFID locks**

- RFID locks offer a wide variety of levers and finish options to complement your decor.
- RFID locks enable guests to move faster, more efficiently, and also provide an additional level of reliability compared to magstripe locks.
- Trillium locks provide the option to implement enhanced credential security for RFID keycards by choosing MIFARE Plus® technology.

## **TRILLIUM ADVANCE**

### ~ Trillium® ADVANCE RFID locks

- With a two-piece design, Trillium radio frequency identification (RFID) locks offer a wide variety of levers and finish options to complement your decor.
- RFID locks enable guests to move faster and more efficiently, and also provide an additional level of reliability compared to magstripe locks.
- Trillium locks provide the option to implement enhanced credential security for RFID keycards by choosing MIFARE Plus® technology.





Technical support, full integration  
and after-sales service

p.57



# Access control adaptable to all types of facilities

## Taking the guest experience to a whole new level of guest satisfaction

### Bluetooth Electronic Lock for Hotels “EVO”

Design technology and innovation converge in EVO to provide a high-performance electronic hotel lock.

EVO electronic lock incorporates an innovative access control technology, developed by OMNITEC, which allows hotels to implement an unprecedented level of security and control.



### Electronic Lock for Hotel “FIT-IN”

Upgrading mechanical, magnetic band, chip or RFID locks is easy and fast with the Fit-In electronic hotel lock.

Maintaining the existing mortise, the electronic lock Fit-In adapts to its installation and provides the ease and security of MiFare electronic locks for hotel renovations.



### Access Control “Digit Hotel”

Access control with opening by numeric keypad, Bluetooth, proximity card or on-line. Designed to control hotel doors and external access to buildings, garages, etc. and to common areas of hotels and offices.



### Access Control “Lift”

Lift access control integrates with elevator access panels. Increase hotel security allowing guests to access only where they have been granted permissions.



### Wall Reader Access Control “Anti-Vandalism”

The Omnitec wall reader Anti-Vandalism access control is a guarantee of maximum security in access control. With the independent reader unit and control unit, undesired entries are prevented, due to the impossibility of tampering with the controller.



Electronic Lock  
“OS SLIM”

Electronic Lock  
“OS SLIM CODE”

The OS SLIM and OS SLIM CODE electronic locks stand out for their slim design, with narrow escutcheons, giving both the door and the room style and elegance.

Their high technological level combined with opening via Bluetooth, MiFare proximity card, numerical code and remotely online through Gateway, make these locks some of the most versatile models in the hotel sector.

### Electronic Lock for Hotel “FLAT 2”

FLAT 2 electronic lock has been designed to adapt to existing mortises and modernize doors, providing them with a comfortable and safe access control system. Its remote management systems make the FLAT 2 a perfect lock for mid-sized hotels with or without a 24h reception.



### Access Control “MINI”

MiFare wall-reader access control for common areas and entrances of hotels and buildings where an electronic lock can't be installed.



# Highest quality, optimum performance hotel safes

**Designed to blend with your hotel's look and layout.**

Ask our reps about available colors, finishes, and configurations.



## Advanced features

- 4 to 6 digit codes
- ADA-Compliant illuminated epoxy\* keypad
- Large LED display
- Automatic inside light
- Floor carpet
- Auditory and visual operating signals
- 400 events audit trail printable with user name, date and time and operation (opening, closing)
- Self-diagnostic troubleshooting
- Low battery indicator
- Motorized locking system
- Emergency opening and security management tasks with the CEU
- Security management software
- Cross Key override
- 5 years commercial warranty
- Optional pedestal available (12" & 24")

## Featured models



### LS815 Recessed door

H 9.06" W 16.54" D 15"  
Fits 15" laptop



### 809 BLUE Recessed door

H 9" W 17" D 14.75"  
Special orders for other colors available



### Computerized emergency unit



### D115 Front drawer

H 7.48" W 16.54" D 15.75"  
Fits 15" laptop



### 415 W Wall mount

H 16.5" W 13.75" D 6.5"



### Optional pedestals 12" & 24"



### LS817 Recessed door

H 7.87" W 20" D 15"  
Fits 17" laptop



### T215 Top open

H 5.5" W 15.75" D 13.75"

### T217 Top open

H 5.5" W 19.25" D 13.75"

\* Custom-made safes available on request



# Compressor-free, energy-efficient hotel fridges

## Advanced features

- Built-in type
- 30, 40, 50 and 60 liters
- 65 or 90 watts
- 0.75, 0.8 or 0.95 kWh/ 24 hours
- Adjustable internal shelves
- Adjustable internal door shelves
- Digital thermostat
- Fuzzy logic technology
- Absorption cooling unit
- Auto defrost
- LED interior light
- Reversible door
- Optional glass door
- Lock & key available
- 3-year warranty



## Featured models

### 302 AS / WT

**W 15.82" D 16.92" H 19.68"**  
30 liters, reversible door



### 402 AS / WT

**W 15.82" D 17.91" H 22.05"**  
40 liters, reversible door



### 502 AS / WT

**W 15.82" D 17.91" H 26.38"**  
50 liters, reversible door



### 602 AS / WT

**W 18.11" D 19.09" H 23.82"**  
60 liters, reversible door,  
glass door option available



*Optional door lock  
available for all models*

## Drawer minibar - For premium hotels & cruise lines

A convenient slide-out access, very low energy consumption, rapid cooldown minibar. Sets a new benchmark in versatility, comfort and efficiency.

The Drawer Minibar has an elegant design and it is customizable according to a client's needs - ideal for unusual or reduced spaces creating alternative solutions, with an innovative design.

This new concept of minibar is silent and smart, providing a drawer system for easy access from above. Items within are easy to find and retrieve thanks to the two interior compartments, which can easily be converted into a single space.





# Hospitality appliances

## Small space convenience



## Danby offers the total solution

Danby offers a range of brands (MicroFridge®, Danby One Plug® and Danby®) that provide safe, energy-efficient, and convenient food storage and preparation solutions.

Warranty: 2-year parts & labor.

## Mini-fridges and microwaves

Enhance your guest experience by offering the convenience of preparing a quick snack or simple meal in-room with the safety and reliability today's hospitality standards demand!



## Extended stay appliances

- Refrigerators (up to 18 cu. ft.)
- Over the range microwaves
- Built-in dishwashers
- Microwave & fridge combo units
- Cooktops



## Built-In 2 burner radiant cooktop

- Hospitality cleaning lock
- Hot surface indicator light
- Automatic safety shutoff





# Appliances for extended stay accommodations



## Refrigerators

Multiple configurations are available to adapt to suite size, layout and guest usage patterns.

Warranty: 2-year parts & labor.

### Features

- ENERGY STAR® certified
- Adjustable shelving
- ADA-compliant height on select models
- Top or bottom freezer on select models
- Counter-depth or full-depth models
- Compact capacities: 10–18 cu. ft.
- Larger capacities : 18-22+ cu. ft.



## Electric cooktops

Our cooktops combine a compact footprint, straightforward operation and built-in safety features to support everyday guest use.

### Features

- Built-in, flush-mounted electric cooktop
- 4 knob controls
- Automatic safety shutoff after 1 hour
- Residual heat and hot surface indicators
- Designed for frequent use
- Conduit power cable for hardwired installation



## Built-in dishwashers

Available models with front-control or top-control configurations.

### Features

- ENERGY STAR® certified
- Built-in installation (18" or 24" width)
- Hard-food disposer to reduce clogs
- Leak protection with automatic shut-off
- ADA-compliant height on select models
- Power connection cord kit included
- Options: Stainless steel interior tub, sanitize cycle, steam pre-wash, enhanced drying system, reduced noise level, child lock
- Colors: White, black or stainless steel



## Built-in & over-the-range microwaves

### Features

- Built-in or over-the-range installation for space optimization
- Multiple power levels for everyday reheating and light cooking
- Durable, easy-clean interior surfaces
- Venting capability on over-the-range models
- Colors: Stainless steel or neutral finishes suited to rental environments
- Compact capacities ( 0.7 to 1.6 cu. ft.)
- Larger capacities (up to 2.2 cu. ft.) for full kitchens





**Hotpoint.**



Energy efficiency rebate  
program support *p.56*



# Premium PTAC units for your rooms

## Features

- Smart thermostat pairing options with front desk control
- Heat pump feature for energy savings
- Extended parts & labor warranty
- More efficient, more reliable, and much quieter
- Hotel-approved models that meet your needs and budget



## The Benefits of PTACs

PTAC units are an economical way to cool and/or heat a room. Easy to install, clean and maintain for years of satisfied use.

## Energy Efficient

PTAC models have an efficiency rating up to 13.3 eer, which translates into energy savings.

## Optional special features

- Corrosion Protection
- MUA (Make-Up Air)
- ICR (Internal Condensate Removal)

## High Efficiency Brand Rotary Compressor

Energy-efficient and maintenance-free operation.

## Separate Indoor & Outdoor BLDC Motors

Dual motor configurations allow for the lowest sound rating, while also promoting the highest level of energy efficiency.



## Zonline® Perfect Control

- Whisper-Quiet Operation
- One Size Fits All: Perfect Control technology PTAC self regulates to room size & room conditions from 4000 to 15000 BTU.
- Efficient Cold Weather Heat Pump: The variable speed compressor and advanced defrost capability on Perfect Control models allow for the best-in-class heat pump operation down to 0°F (excludes ICR models).

## Zonline® Fixed Speed

- New Updated Appearance: The new Zonline® gray-white chassis color will complement any installation and room decor. Easy-to-read interface makes navigation simple.
- Unmatched Durability: All Zonline® units are made of the highest quality materials and tested in extreme environments to ensure they operate at peak performance, season after season.

## Hotpoint

- 2 Fan Speeds
- Slinger Ring Condensate Removal
- Coverless Control Panel
- Automatic Emergency Heat
- Freeze/Frost & Overheat Protection
- Constant Fan Button
- Self-Diagnostics
- Auto Power Recovery



Energy efficiency rebate program support

*p.56*



# PTAC units

## Efficient solutions for all heating and cooling needs

### The Benefits of PTACs

PTAC units are an economical way to cool and/or heat a room. Easy to install, clean and maintain for years of satisfied use.

### Energy Efficient

PTAC models have an efficiency rating up to 13.3 eer, which translates into energy savings.

### High Efficiency Brand Rotary Compressor

Energy efficient and maintenance-free operation.

### Separate Indoor & Outdoor BLDC Motors

Dual motor configurations allow for the lowest sound rating, while also promoting the highest level of energy efficiency.

- Options for hotel rooms of all sizes
- Heat pumps provide an all-year-round ventilation solution
- Powerful cooling and fan speeds for variable airflow
- R32 refrigerant
- Anti-Corrosion protection
- Continuous fan operation
- Auto restart: units automatically restart after a power failure
- High-efficiency compressors provide durability and efficiency
- Freeze protection protects air conditioning coils from freezing
- Compatible with remote digital thermostats
- Dehumidification mode



*Up to 5-year commercial warranty.*

Before purchasing PTAC units, the square footage of the intended space must be determined. This square footage will determine how many BTUs the unit needs to efficiently cool or heat the area. Options available are 7 000, 9 000 & 12 000 BTU.

Our air conditioning options provide optimized solutions for all areas of a hotel, bringing exceptional heating, ventilation and air conditioning performance. Through our expertise and industry knowledge, we respond directly to the needs of hotel clients seeking digitized and eco-conscious PTAC solutions.



# Energy-saving thermostat solution for hospitality

## Reduce energy costs and increase operational efficiency

Guests spend more than half their stay outside their rooms, yet heating and cooling systems often continue running at full capacity.

### Smarter Energy Savings

The New Dream Ultra Thermostat powered by Energex helps hotel owners cut energy consumption and utility costs by 15–40% by reducing waste in unoccupied rooms.

### Flexible, Scalable, and Future-Ready

The Energex platform is compatible with virtually any thermostat and can be expanded with advanced features such as occupancy-sensor light switches, remote control, load shedding, and wireless technologies including WiFi, ZigBee, Z-Wave, and ISM-band modules.



### Dream Thermostat by Energex

- Wi-Fi cloud dashboard
- AI-Powered energy management solution
- Selection of wireless and wired sensors

### Effortless Installation

#### Get up and running in under 30 minutes

No disruptions, no downtime, and no impact on your space's appearance.

### Custom-Fit for Any HVAC Setup

Each configuration is customized to fit the property's infrastructure and specific HVAC systems, including:

- PTAC (Packaged Terminal Air Conditioner)
- PTHP (Packaged Terminal Heat Pump)
- Baseboard heaters
- VAV / VRV Terminal Boxes
- FCUs (Fan Coil Units)

Energex also integrates seamlessly with any Property Management Software (PMS) and Building Automation System (BAS).

### Energex Energy Management Platform

At the heart of the Energex platform is a sleek, digital thermostat dashboard that seamlessly connects to multiple sensors, devices, and networks. Leveraging your building's existing WiFi, our system simplifies installation and reduces the cost of a connected solution by up to 60%.



 Energy efficiency rebate  
program support *p.56*



# VTech wired & wireless thermostats

**Designed with the hospitality industry in mind**, VTech brings smart temperature control to the forefront of guest comfort. Whether you're managing a boutique property or a large-brand facility, VTech thermostats offer a seamless balance of sleek aesthetics, intuitive functionality, and energy-efficient performance.

**More than simple regulators, VTech thermostats are tools to enhance guest satisfaction and reduce operational costs.**

As the world's largest manufacturer of cordless phones and electronic learning products, VTech is a trusted name backed by decades of engineering excellence and global manufacturing expertise.



## Universal 24V wired thermostat

T961NN50 White  
Optional 7-day programmability

## Wireless thermostat

W960 Space Grey  
Occupancy detection

## Main features

- Smarter usage patterns help reduce unnecessary heating and cooling cycles
- Lower HVAC-related energy consumption by up to 30%
- Compatible with all major PTAC & VTAC brands
- Ideal for renovations or new builds
- Wireless option perfect for retrofits or spaces where cabling is a challenge
- 3-year limited warranty
- Antibacterial coating tested to inhibit 99.9% of bacteria growth



# Plug & play smart thermostats, designed for elevated hospitality

## Experience peak energy efficiency with Verdant's smart thermostats

Empty rooms shouldn't drive energy costs. Verdant smart thermostats put intelligent HVAC management to work so your property consumes energy only when and where it matters most.

Installed in over 7,000 properties in North America, Verdant thermostats combine occupancy detection with advanced control logic to deliver real savings year-round.

### Lower operating costs from day one

- ✓ **Typical payback in 12-18 months**
- ✓ **Achieve up to 40% less HVAC runtime**
- ✓ **Reduce energy bills by up to 20%**
- ✓ **No downtime: Rooms up and running in minutes**

### Main features

- Motion and body heat detection
- Night occupancy mode & dynamic recovery
- Self-install in under 10 minutes per unit
- Intuitive controls easy for guests to understand
- Works with virtually all systems that allow thermostat control
- Available in either wired or wireless versions
- Fingerprint Resistant Glass
- 7-day programmable

### Verdant VX4

Adaptive temperature control with embedded AI



### Web-based platform

Maximize your property's energy savings by monitoring and optimizing energy management while providing you with measurable energy reduction data and insights.





# Hotel alarm clocks, phone chargers and sound sleep machines



## Station R

- 6 relaxation sounds and white noise
- Gentle Wake alarm with sleep timer
- USB and USB-C universal charging ports
- Automatic Daylight Saving Time adjustment
- Self-charging memory backup (no battery replacement required)
- Tamper-proof time settings and power disconnect
- Integrated security tether
- Available in Black and Ash Grain finishes



Choose from 3 color options  
**Jetway™, CharcoalWeave™, or WalnutWeave™**

## Station O

- USB-C & USB charging ports
- Single day alarm
- Auto Daylight Savings
- Security features
- Small footprint
- Part numbers: NSO2-BK, NSO2-WFD, NSO2-WFL



**Jetway™**

## Station P

- Qi fast wireless charging 10W
- USB-C 3A / 2.4A in dual mode
- USB-A 2.4A / 1A in dual mode
- 2X AC Power Sockets
- Micro-suction pad holds in place
- Flush mount power plug
- Security cord bracket
- Part number: NSP2-BF



## Station A

- Customizable
- 10W qi wireless charging
- Bluetooth speaker
- Updated with USB-C & USB charging ports
- Single day alarm
- Auto Daylight Savings
- Security features
- Part numbers: NSA-BK, NSA-WF, NSA-WFB
- Choose between classic Jetway™, WarmWalnut™ or WalnutSand™ finish



Choose from 2 fabric finishes  
 the **Jet Weave**, or the bold light  
 walnut wood finish

## Station C

- D10W qi wireless charging
- USB 1A
- USB type-C 2.4A
- Braided cable
- Customizable
- Micro-suction Pad
- Security c-clamp
- Part numbers: NSC3-BF, NSC3-WW



**Jetway™**

## Station W

- Updated with USB-C & USB charging ports
- Lightsleeper
- Single day alarm
- Auto Daylight Savings
- Customizable
- Security features
- Part numbers: NSW2-BK



## Station E

- USB type-C charging 2A
- USB charging 2A
- Single day alarm
- Auto Daylight Savings
- Security features
- Small footprint
- Part number: NSE-BK

Custom branding available for some Nonstop products.



# Hotel alarm clocks & charging stations



## MX

- Wooden texture surface
- LED display with multi-level dimmer
- Fast charging: Dual USB-C ports with Power Delivery (PD)
- USB charging port
- High-quality Bluetooth speaker
- Single-day alarm
- One-click time synchronization



## HS1-PD

- Wireless charging
- 2 USB charging ports
- FM radio
- 3.2-inch LCD Screen with multilevel dimmable
- Bluetooth speaker with high-bass sound and hands-free function
- Single-day alarm with snooze
- Built-in lithium battery



## D8-PD

- Single-day alarm with snooze
- Multilevel dimmable display
- Automatic Daylight Saving Time adjustment
- Bluetooth speaker with high-quality sound
- FM radio
- Charging ports: 1 rear USB & 2 front USB-C
- Qi wireless charging surface
- Battery backup



## S1-AC

- Alarm clock with snooze function
- Double USB charging ports
- Double US power socket
- High-quality Bluetooth speaker system
- FM radio
- Remote control for Synchronizing time
- Single day alarm



## HC1mini

- Double USB charging ports
- Easy alarm clock setting
- Single day alarm



## HC2 Pro

- Single-day alarm with snooze
- Adjustable alarm volume and optional microSD card for custom ringtones
- 3.2-inch LCD display
- Automatic multilevel dimmable
- Bluetooth speaker
- 2 USB charging ports
- Thermometer function with °F/°C switch
- Battery backup
- Gesture-controlled night light function
- Compatible with housekeeping IR remote controller



## Q3 Power station

- Magnetic wireless charging pad (up to 15W)
- 2 TR power outlets with surge protection
- Charging ports: 1 USB-A & 2 USB-C
- ETL listed & passed UL spill test
- Color: black, silver-grey
- Power cord: 1.82m



## Q1

- Wireless charging pad with dual USB Port



## Remote control

Used to synchronize time via iPhone or Homtime products and reset the alarm clock.



# Full-featured guest-friendly hotel in-room phones

## Innovative, contemporary and classic styles



### 82 Uno Pro

- Available in corded and cordless models (Analog & SIP)
- 5-year battery warranty
- Reversible handset with easy speakerphone access
- Six programmable guest service keys
- High-quality speakerphone
- Customizable full-length faceplates
- Antibacterial plastic tested to inhibit 99.9% of bacterial growth
- Silver and Gold finishes available



### HT60

- Available in analog or SIP
- Single line
- 8 guest service keys



### NEO & NEO C2 corded & cordless

- 62 single line speakerphone
- Available in analog or SIP
- 0,3,5, or 10 guest service keys
- Full length faceplates for hotel name/logo and dialing instruction.
- ProGard moisture resistance



### UNOMedia5

- Available corded, cordless & slim
- Available in analog or SIP
- 5 or 10 guest service keys
- High-quality speakerphone
- Alarm clock and audio features including Bluetooth



### Classic products

- Single line
- Speakerphone
- Industrial quality manufacturing
- 3 or 6 guest service keys
- Full length faceplates for hotel name/logo and dialing instructions



### HT20

- Available in analog or SIP
- Single line
- Keypad on the handset
- 1 guest service button on the handset
- Color options available to match designer preference



### 77 DECT & 77 SLIM Series

- Single line
- Available in analog or SIP
- Available in black or ivory
- 3 guest service buttons on the handset

Compatible with most PBX's



### Custom Faceplates: design services are included!

Custom faceplates available for most hospitality phone brands, printed on standard paper with a choice of ink. For many Bittel models, premium wipe-clean PVC faceplates with adhesive backing are also available in a wide range of colors.



# Affordable phones and administrative solutions



## The VTech advantage

When you choose VTech, you're also choosing world-class antibacterial phones backed by 40 years of telecom experience. Select from classic or contemporary analog and SIP models, the latest features and customizable faceplates.

### Analog phones

- Cordless & corded options
- Energy Star® certified



### SIP phones

- Cordless & corded options
- Secure
- Sophisticated design



### Desk phones

- Outfit your entire property's communication needs
- Ideal for front desks, back-end operations, restaurants and conference spaces
- Multi-line and multi-cell solutions available

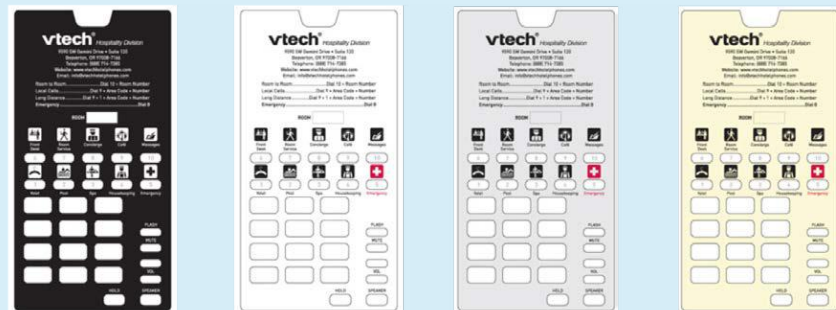


### Phone color options on select models



### Guest room phone faceplates

Additional colors available upon request



# MODA



# Stackable MODA modules by Jacob Jensen



How do you stack?\*

MODERN/MODULAR/STYLISH



## Charging Module

- Wireless charging (optional)
- Convenient charging cables magnetically attached
- 2 USB Ports
- USB-C Port



## Bluetooth Module

- NFC enabled Bluetooth



## Alarm Clock Module

- TruTime ensures clock time is always correct
- Auto dimming with ambient light sensor
- Easy to use alarm with 10 minute duration
- Single day alarm



## Speakerphone Module

- Customized faceplate
- 4 guest service keys
- Optional handset
- 3 guest service keys on handset
- Corded & cordless handset option



## Voice Recognition Module

- All MODA modules are "Voice Ready" and designed to work with voice recognition technology



## Casting Module

- Wired casting for Apple & Samsung devices
- Wireless casting

Handset option



\* Build your own stack, module by module.



# Accessories

## Rayovac Batteries

Rayovac® Batteries are the #1 brand used in the hospitality industry.

The 7-year shelf life batteries are individually date coded to ensure freshness, and packed in bulk in a strong plastic case which is easy to carry and easy to use.



## TV Wall Mounts

Specially designed for the hospitality market, we have dozens of different models for your hotel needs.

Flat, tilt, ultra slim, pullout, pivot, dual arm, we have it all.



## Door Blocker

Easily keeps doors open, with no damage!

Our Door Blocker is the most innovative door stopper on the market. Made with engineered hard plastic, its ergonomic and simple design make it the number one choice for those who care for their employee's safety and want no more damage to their doors and frames.



## TV Remote Controls

Clean washable remote & universal hospitality remote available.

Less expensive than the original TV remote. Great options for replacement.





JUICES	
Orange Juice	\$3.75
Pineapple Juice	\$3.99
Fresh Coconut	\$2.00

SMOOTHIES	
Hot Strawberry	\$5.99
Mango Banana	\$2.70
Apple Caramel	\$3.00

COCKTAILS	
Margarita	\$4.99
Pina Colada	\$3.99
Bloody Mary	\$2.75
Daiquiri	\$3.99
Mojito Twist	\$2.00
Gin & Tonic	\$4.00
Whiskey Sour	\$2.70
Tom Collins	\$3.00

JUICES	
Orange Juice	\$2.70
Pineapple Juice	\$2.99
Fresh Coconut	\$2.99

SMOOTHIES	
Hot Strawberry	\$5.99
Mango Banana	\$2.70
Apple Caramel	\$3.00

# Smart outdoor TVs, mounts, stands and kiosks

## Brand-standard hospitality TV Wall Mounts & TV Stands for all applications

The Peerless line of durable, sleek, and modern wall mounts is the brand standard for numerous major hotel chains across North America.

With rotations up to 30° and wide tilt angles, VESA® compliancy, post-installation horizontal and vertical leveling options and side-to-side positioning, we have ideal wall mounting solution for all kinds of hospitality applications.



**HPF650 Pull-out swivel wall mount**

**ST650 Smart mount universal tilt wall mount**

The **TTS6X4 Universal TV stand** provides 25° of swivel to position a TV to the perfect viewing angle. With compatibility up to a 600 x 400mm VESA® pattern, this stand can be mounted at three different heights.



**The TTS6X4 Universal TV stand**

## Outdoor Smart TVs

Our range of Neptune™ Partial Sun **Outdoor smart TVs** provide an all-season solution for outdoor use.

These smart TVs are all-weather rated, maintenance-free and have a wide operating temperature range of -30°C to 50°C (-22°F to 122°F).



With 4K resolution and an IPS panel, the Neptune meets full UHD specifications, providing exceptional color and video quality from any viewing angle.

## Portrait Kiosks



LOC carries a versatile range of sleek, slim and attractive **Kiosks**, including the Ultra Stretch Portrait and the Smart City. These made-in-the-U.S.A. kiosks are completely customizable with camera options, custom artwork, audio systems, LED lights, card readers, printers, scanners and more. Contact us for details.



# Make every first impression count with front-of-house essentials

## No graphic designer? Front Desk Supply has you covered

Professional design is included with every order to help keep your branding consistent. Our in-house design team is at your service at no extra cost.

## Cost-effective generic options

To fit your operational needs and budget. Our modern designs are ready to ship!

- Parking permits
- Baggage tags
- Valet tickets
- Bathrobe tags
- Rental tags
- Notepad and envelopes



## Stationery

### Branded paper essentials

Full range of stationery, including envelopes (with or without windows), letterhead, greeting cards, and comment cards. Whether for guest rooms, meeting spaces, or front desk use, these materials help maintain consistency and professionalism across all your printed items.



### Pens and notepads

Custom pens and notepads add a practical, branded touch to your guest experience. Pens are available in black or blue ink, with many styles allowing multi-color imprints. Notepads come in various sizes for in-room or meeting use.

## Signage

Wide range of custom hotel signs in paper or plastic, available in various shapes and sizes. Whether you need reusable or disposable signs for doors, bathrooms, or front desks, we've got you covered.

Popular options include door handle signs, tent and L-shaped signs, and even fully custom die cuts.





# Key cards, holders, wristbands & fobs

## Access solutions that reflect your brand and wow your guests

Whether you're restocking or upgrading your entry system, count on our team to deliver cutting-edge access solutions that meet your needs and elevate the guest experience.

### Showcase your brand with fully customizable access options:

- Magnetic stripe cards
- RFID key cards
- RFID key fobs
- RFID wristbands

### Professional printing and turnkey service

Choose from generic key cards ready to use, brand-standard cards for major hotel chains, or fully customized designs with your logo.

### Sleeves or folders? We've got both.

A simple way to present key guest information:

- KWi-Fi password
- Room number
- Facility hours
- Check-out time
- Loyalty program
- Digital tipping QR
- Promotions or property map

### Compatible. Reliable. Ready to ship.

Our key cards work with the industry's most widely used electronic locking systems. Trusted by independently owned hotels, franchises, and global chains across North America and around the world.





# Behind-the-scenes excellence

## Tags & permits

**Keep things organized from check-in to check-out.**

Whether you're managing guest luggage, valet services, or self-parking, having the right tags and permits in place ensures a smooth, professional experience for both staff and guests.



## More branded essentials

Looking for something else? We customize a wide range of in-room and back-of-house essentials from laundry bags, hangers, and coasters to branded glasses, cups (including coffee cups with lids), wine openers, and staff supplies.

If you don't see what you're looking for, just ask our team. We're here to help you find the best solution for your property!

### Disposable cups



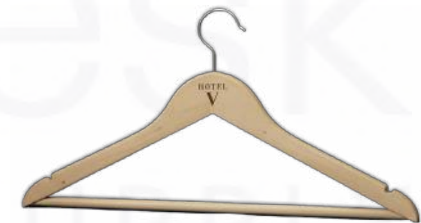
### Coasters



### Laundry bags



### Hangers



**Many hotels SAVE 12% OR MORE by consolidating their supply orders with us.**



# Teknotip cashless tipping solution

## The future of tipping is here

Nowadays, 79% of transactions are made electronically, making cash tips a thing of the past. No wonder hoteliers are concerned! Enter Teknotip's cashless tipping solution: a safe and easy way to boost wages and increase employee satisfaction.

### How it works?

**Customers** can easily make payments by scanning a QR code and using their mobile wallet or credit card. Through its payroll procedures, **the property** ensures that the staff receives their tips directly in their paycheck! It's a simple and hassle-free process.



### Give your staff the appreciation they deserve

Position yourself as an employer of choice by implementing innovative solutions to increase staff wages.



### Support guest satisfaction

Allow your guests the ease of expressing satisfaction by tipping your staff in just two clicks.



### Who can benefit from cashless tips?

- Housekeepers
- Valets
- Concierges
- Bellhops
- Bartenders
- Spa staff
- And more

### Displaying your QR Code has never been easier

LOC offers various QR code printing options, including:

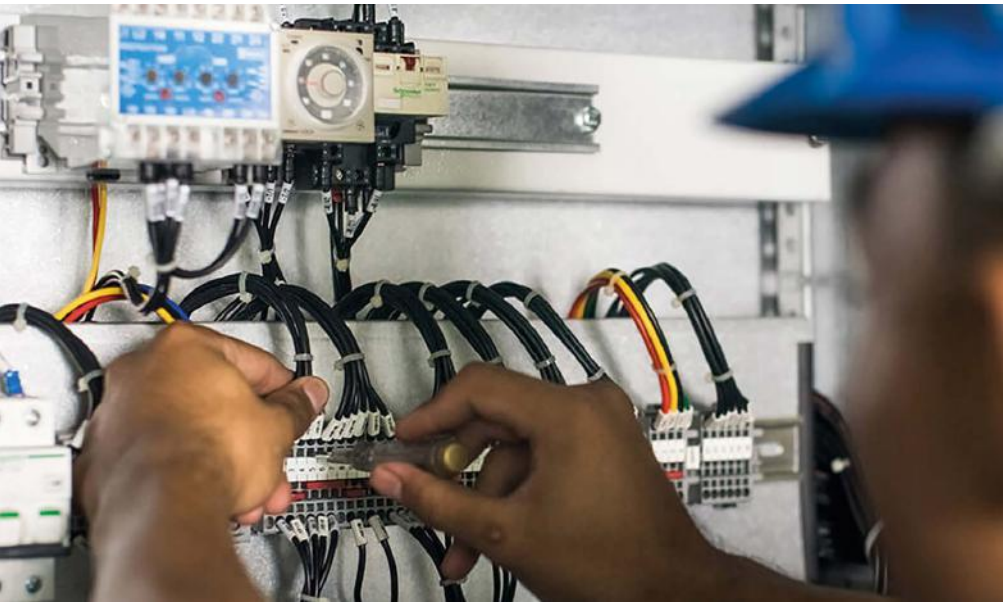
- Keycards
- Table tents
- Keycard sleeves
- Envelopes
- Keycard holders

Ask your local representative how your hotel can take advantage of this game-changing solution.

### Features

- Easy to use for both guests and staff
- Minimal financial risk for hoteliers, as commissions are based on tips only
- 100% turnkey, ultra-flexible support tailored to the needs of any hotel
- No technology skills required, and minimal effort on your part: a dedicated representative sets up your account

# From setup to ongoing support, we've got your tech covered



Our team offers a comprehensive suite of professional services and technology solutions designed to ensure seamless deployment, optimal performance and long-term reliability across all our product lines.

We work closely with your IT departments and operational stakeholders to ensure efficient implementation with minimal disruption to your daily workflows.

Whether you're upgrading one system or overhauling your entire tech infrastructure, our service offerings are modular and scalable, giving you the flexibility to choose exactly what fits your needs.

## Professional installation services

Across all applicable product categories, delivered by trained specialists experienced in active hospitality environments. For PTAC and thermostat installations, we provide trusted HVAC contractor referrals and can assist with installation quotes upon request.

- White-glove installation services
- Removal and disposal of existing hardware
- Replacement and upgrade of legacy equipment
- New installations and retrofit projects, including alignment with existing cutouts and mounting points

## Technical support & ongoing assistance

Get exactly the support you want: no more, no less! Enjoy long-term reliability and peace of mind with technical services that are tailored to match your property's operations.

- 24/7 technical support for your team and your guests
- Remote diagnostics and troubleshooting
- Escalation management and issue resolution
- Trilingual assistance in English, French and Spanish

## Consulting and site evaluation services

Make informed, future-ready decisions with expert advice shaped by decades of hospitality know-how!

- On-site evaluations for retrofit feasibility and technical requirements
- Strategic recommendations for phased rollouts and scalability
- Support for brand compliance and specification alignment
- Budget planning assistance to streamline internal approval processes

# Integration services



## RFID door lock integration

Gain full control over your property's access with a fully integrated, centralized system built for efficiency.

- ▶ Integration with existing or new access control platforms
- ▶ PMS and credential synchronization
- ▶ Configuration, testing and commissioning

## PMS integration



## Smart TV & digital integration

Ensure that your in-room entertainment and digital platforms are fully connected and operational from day one.

- ▶ Smart TV configuration for personalized guest experiences
- ▶ Secure casting solutions for guest devices
- ▶ Wi-Fi network configuration and optimization
- ▶ System testing and validation



## Thermostat & energy management solutions

Drive energy savings and elevate guest comfort.

LOC provides assistance with rebate documentation and compliance paperwork.

We can also connect you with licensed HVAC contractors to ensure full compliance and proper integration with your existing building systems.

# Contact LOC International

## Phone

450 984 1113  
800 724 5904

## Fax

450 984 2831  
800 724 2910

## Email

info@locinternational.com

## Web

locinternational.com  
locsecurity.com  
frontdesksupply.com



@locinternational @locsecurity @frontdesksupply



Halifax, NS

Montreal, QC

Toronto, ON

Calgary, AB

Vancouver, BC

Winnipeg, MB



## Proudly servicing







LOC

International™

SINCE 1988