



BEE

CELLULAR DETECTION SYSTEM

BEE is a Cellular IMSI/IMEI Radar designed for border security in areas with high risk of illegal border crossing by criminals or immigrants. It operates by detecting active cellular phones within the system coverage and estimate the location and distance of the target.



Key Features



Target detection and tracking



Operative in all direction within 30km radius



Automatic scanning in the pre-set sector



Capable to Call, send SMS, and block target



Data collection and storage in database



Graphic analysis tools

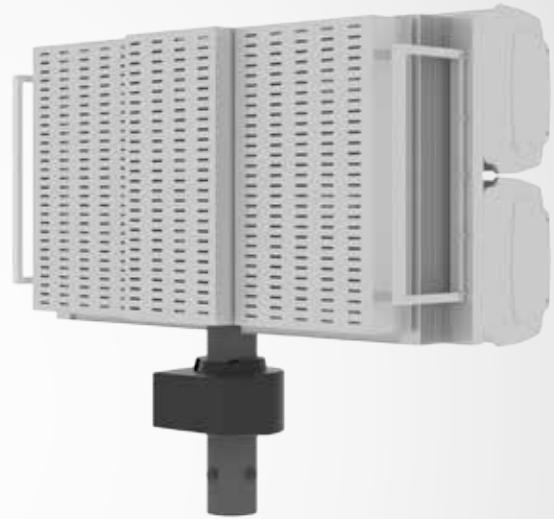


Access for targets set

Technical Specification



Front View





Rear View


Parameter	Specification
Operational Bands & Modes	GSM / UMTS / LTE 800 / 900 / 1800 / 2100 / 2600
Scan Cycle	360 degree / 3 min
Sector Scan Rate	1-2 degree / sec
Maximum Detection Range	GSM - up to 30 km UMTS and LTE - up to 20 km
Number Detected Terminals	Over 1000 per scan

About Mindmatics

Mindmatics Sdn. Bhd. specializes in providing comprehensive range of solutions in IT, computing and electronics. The strength of Mindmatics lies in the seamless synergy of solid technology-based design team with experienced R&D engineers. A host of homegrown innovations to fit the modern 'Command, Control, Communications, Computers, Intelligence, Surveillance and Reconnaissance and Targeting (C4ISRT) needs with almost 20 years of experience in the industry, boasting our original, localized and tailored solutions, we strive to meet all defined requirements and beyond.

 +603 8741 2707

 msb@mindmatics.com.my

 www.mindmatics.com.my

